

Issue 69 March 2015

MOTIFS & TEMPLATES



Use these guides to get started today

FIND THE TEMPLATE YOU REQUIRE ON THE CONTENTS LIST
BELOW AND JUST PRINT OUT THE PAGE OR PAGES YOU NEED
FROM YOUR PRINT MENU

In your print menu, under Size Options, be sure to select
to print 'Actual Size', instead of 'Fit to Page'

Page 2-6

Title: Waist apron
Designer: Christina Rolf
Magazine page: 34

Page 11

Title: New home set
Designer: Carolyn Letten
Magazine page: 58

Page 22

Title: Cat lover set
Designer: Carolyn Letten
Magazine page: 78

Page 7

Title: Susie's stitch school
Designer: Susie Johns
Magazine page: 48

Page 12-13

Title: Breakfast set
Designer: Carolyn Letten
Magazine page: 62

Page 23-24

Title: Harriet hare
Designer: Corinne Bradd
Magazine page: 86

Page 8

Title: Art Deco purse
Designer: Lucinda Ganderton
Magazine page: 50

Page 14

Title: Block of the month
Designer: Corinne Bradd
Magazine page: 65

Page 25-26

Title: Mother's Day gifts
Designer: Ellen Kharade
Magazine page: 90

Page 9-10

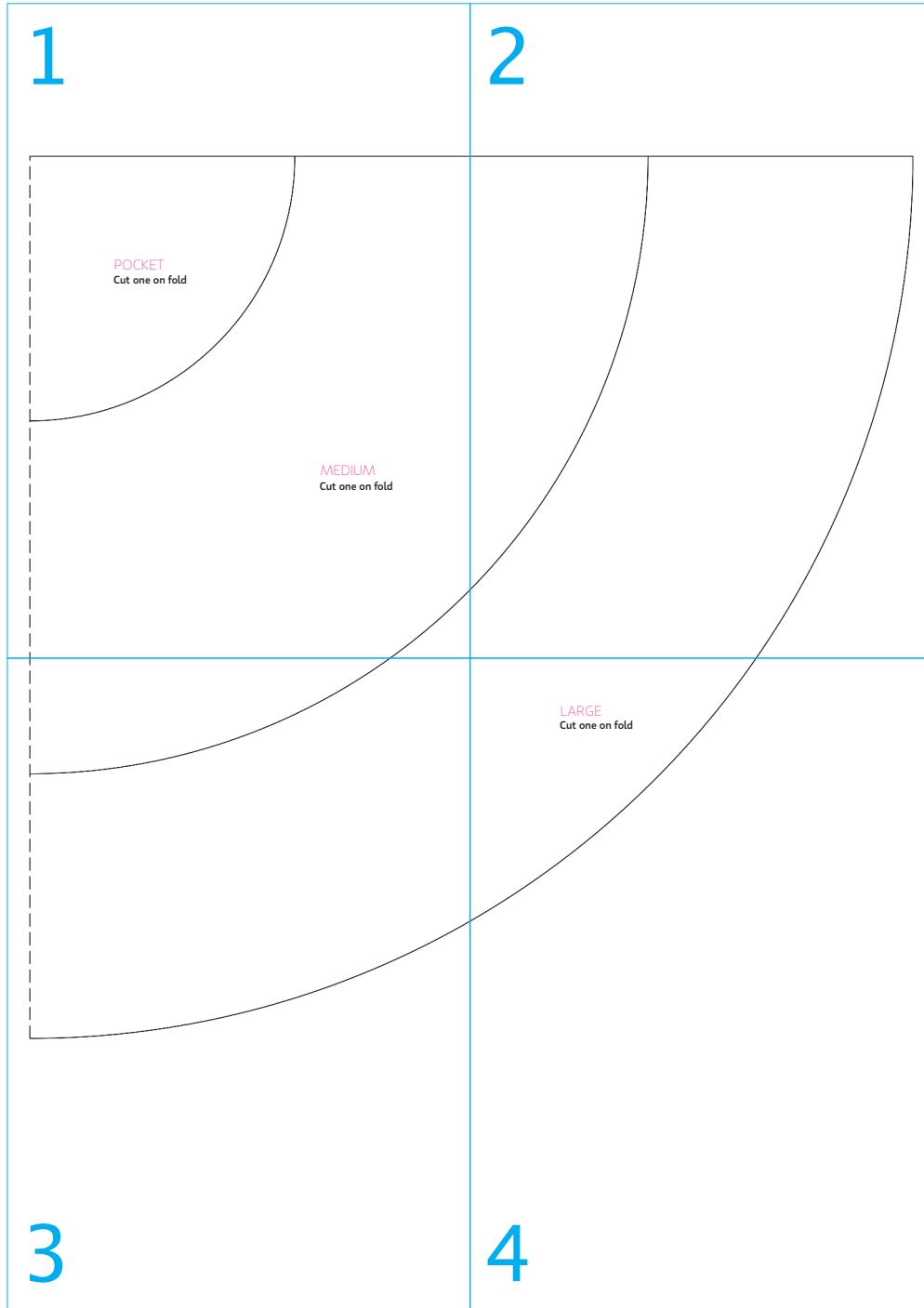
Title: Stylish headscarves
Designer: Susan Beal
Magazine page: 54

Page 15-21

Title: Laundry set
Designer: Sandra Hamilton
Magazine page: 76

© Aceville Publications Ltd.

All projects, templates and patterns are for personal home use only and cannot be sold or used for commercial purposes.



1



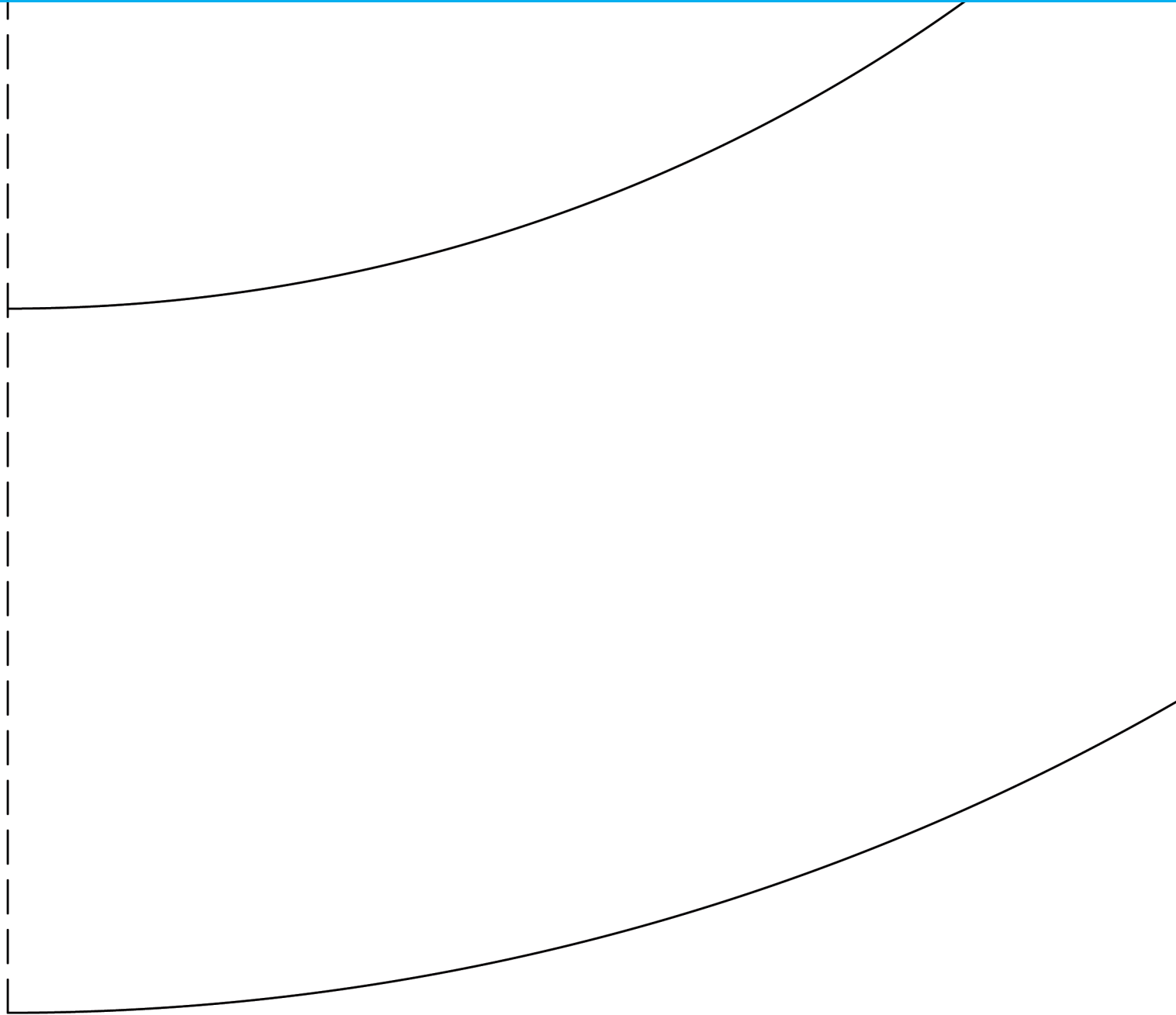
POCKET
Cut one on fold

MEDIUM
Cut one on fold

2

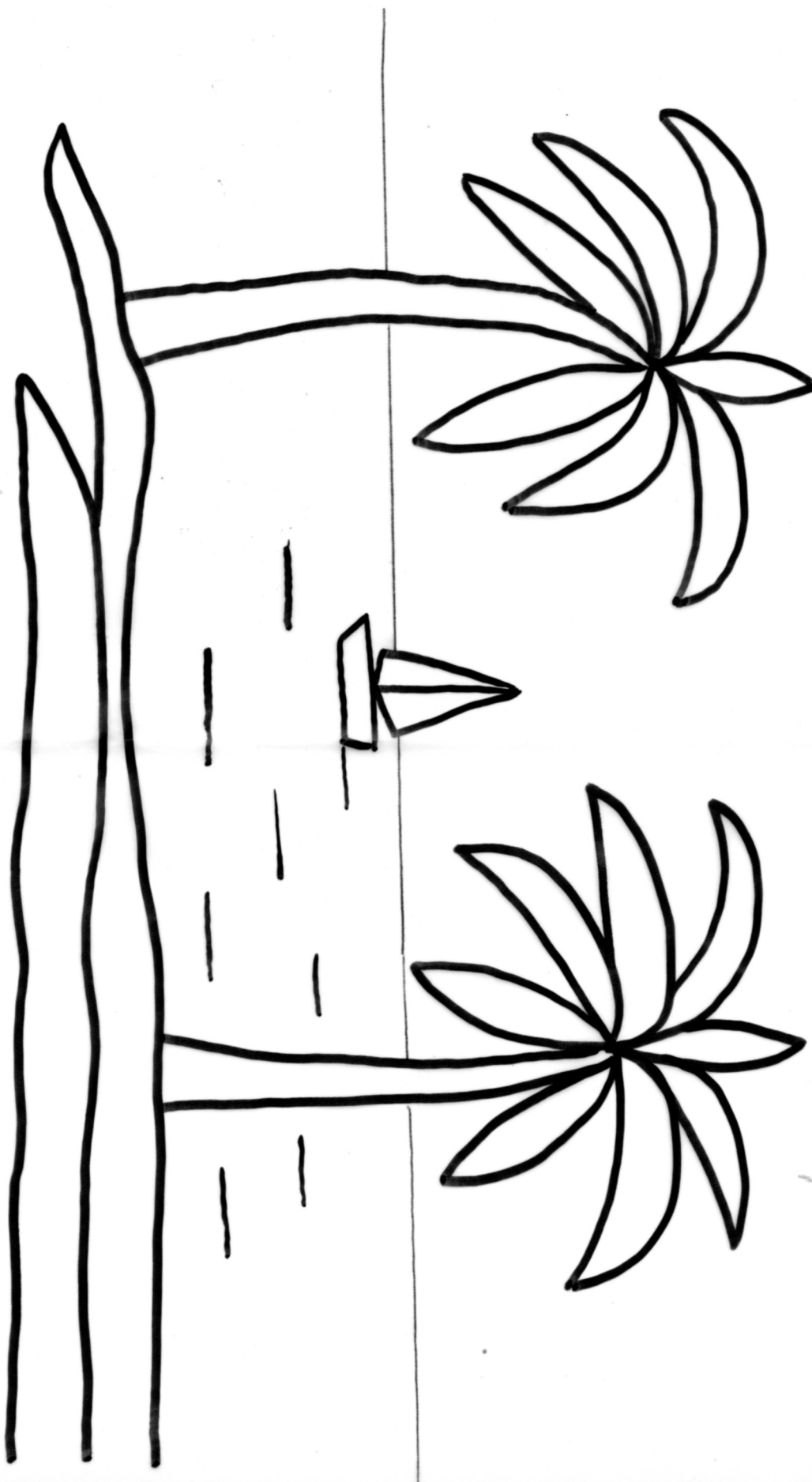


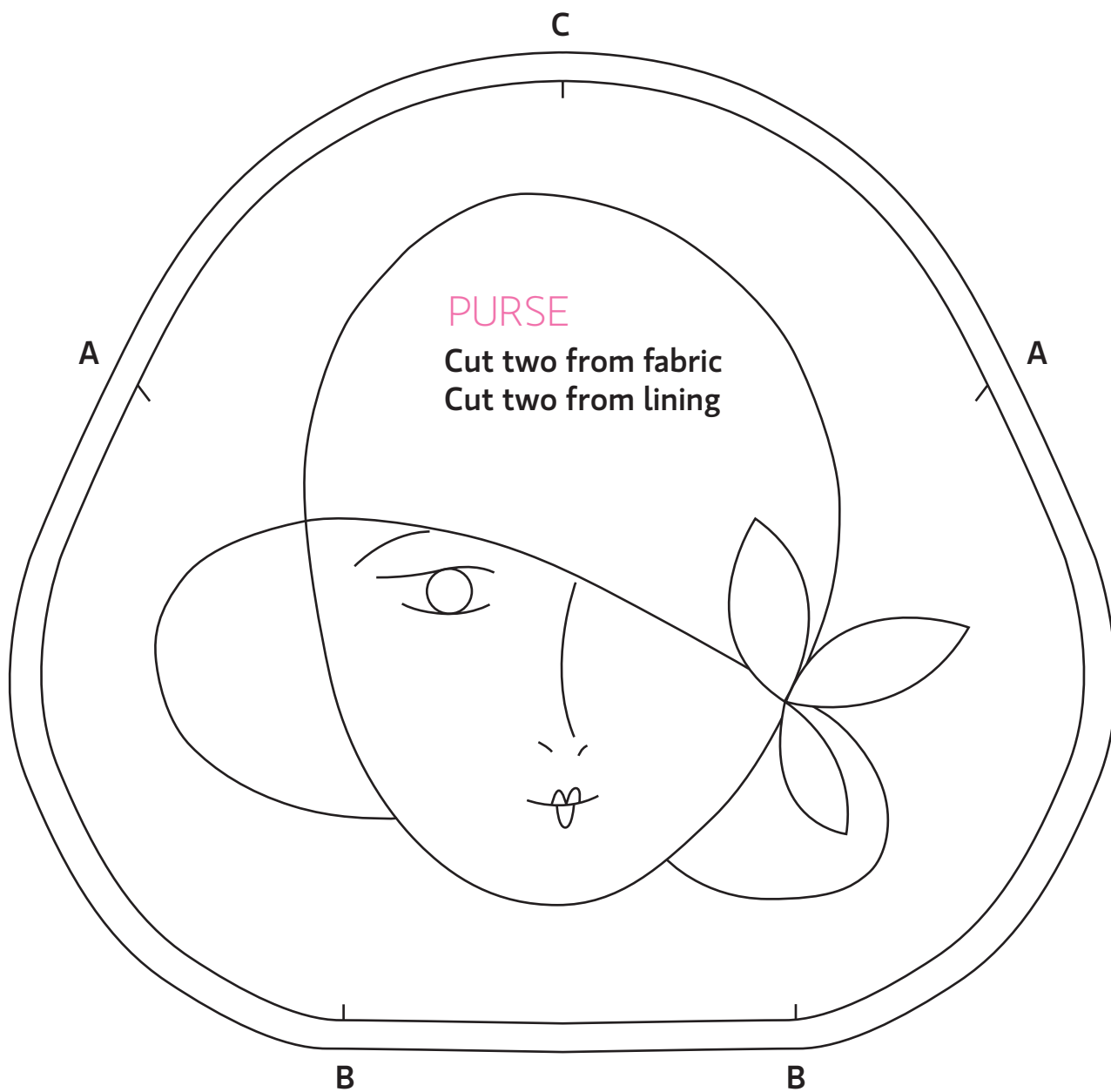
3



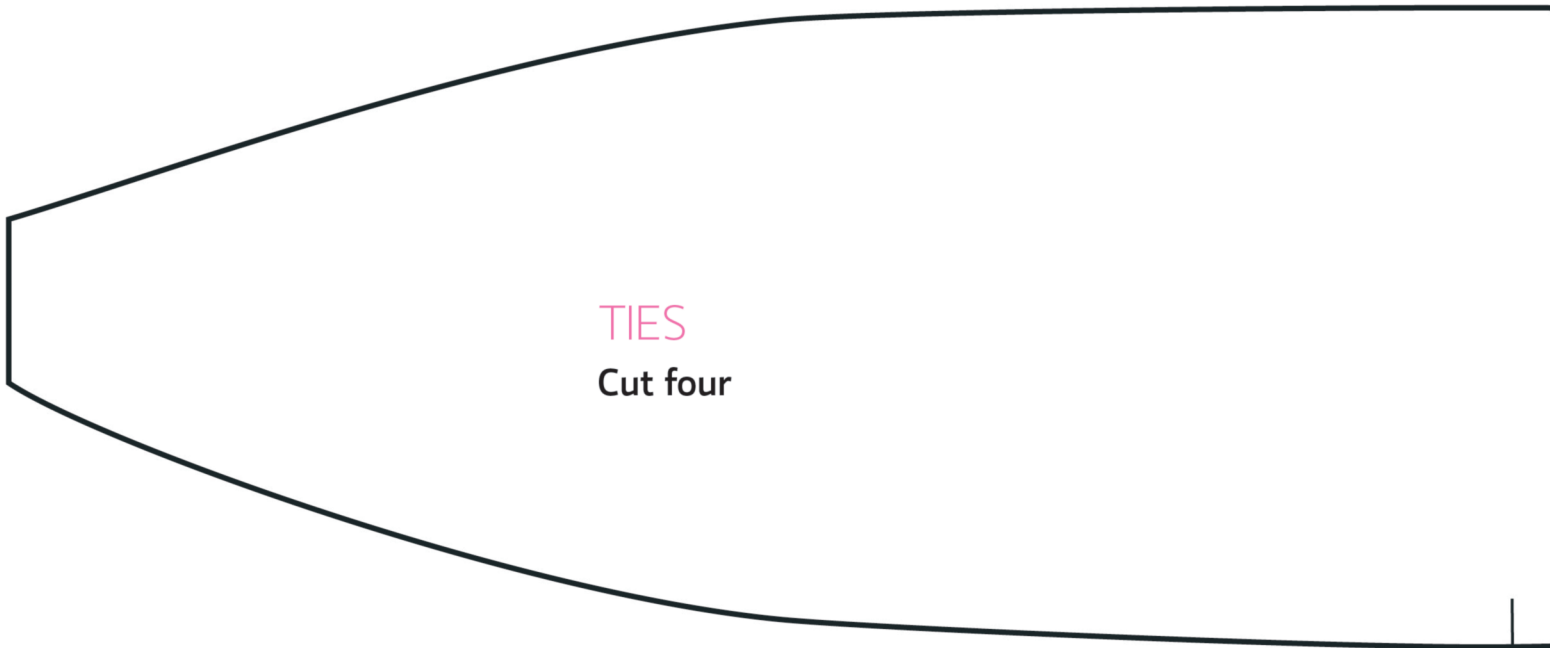
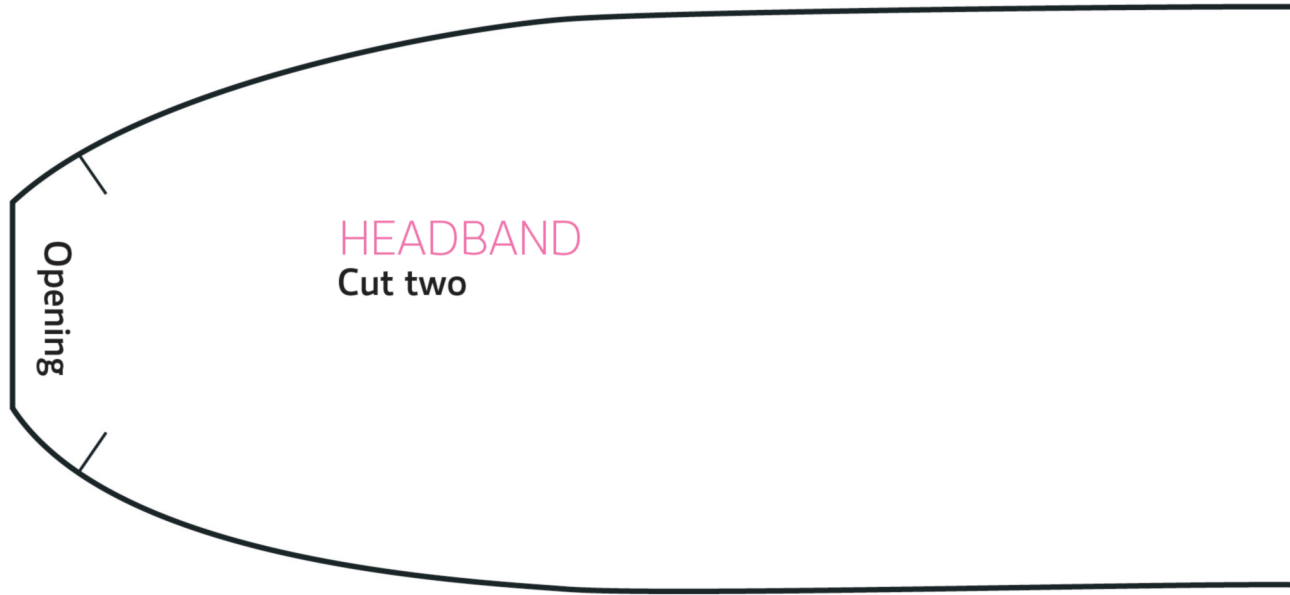
LARGE
Cut one on fold

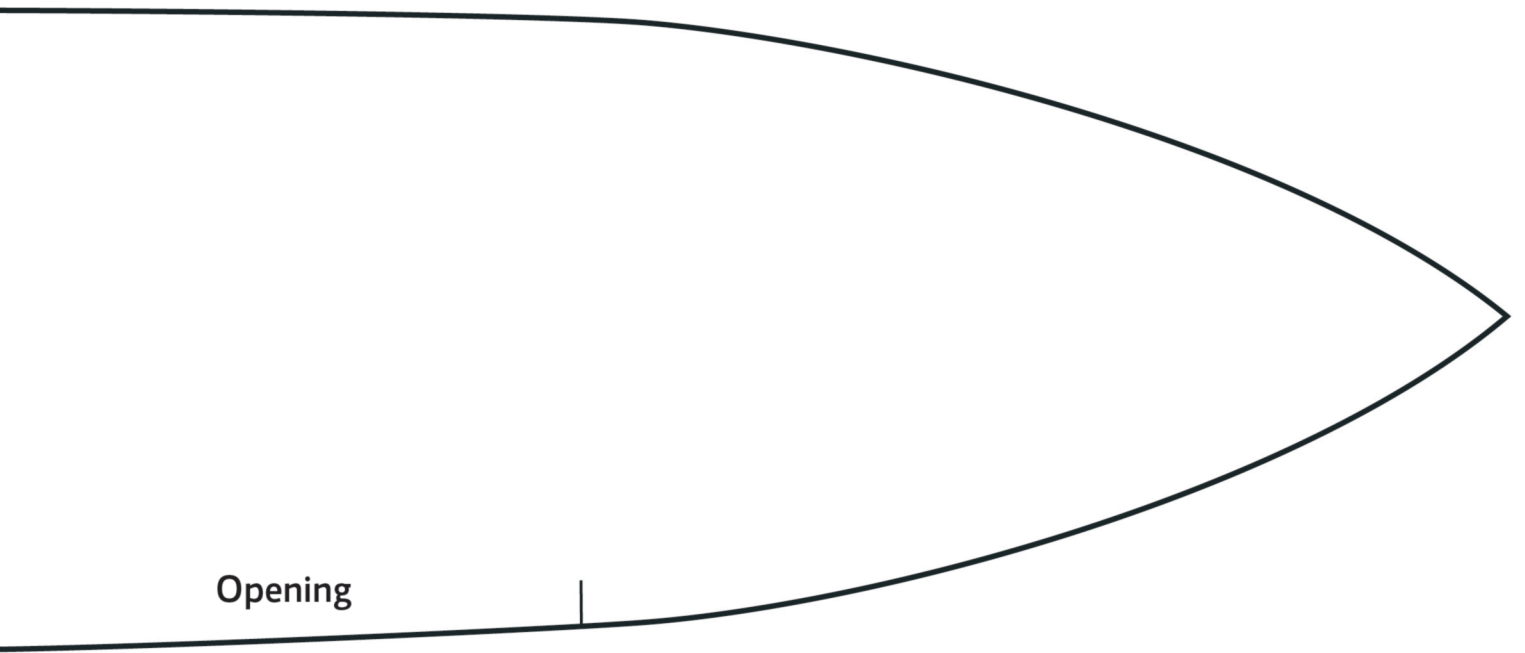
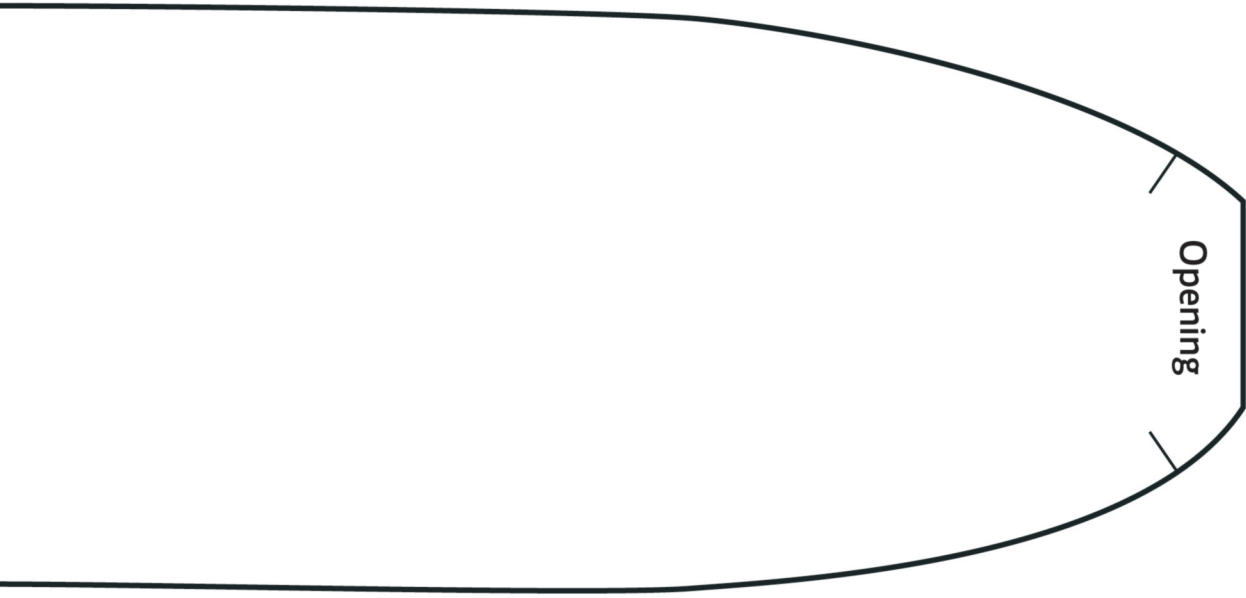
4





Reversed image

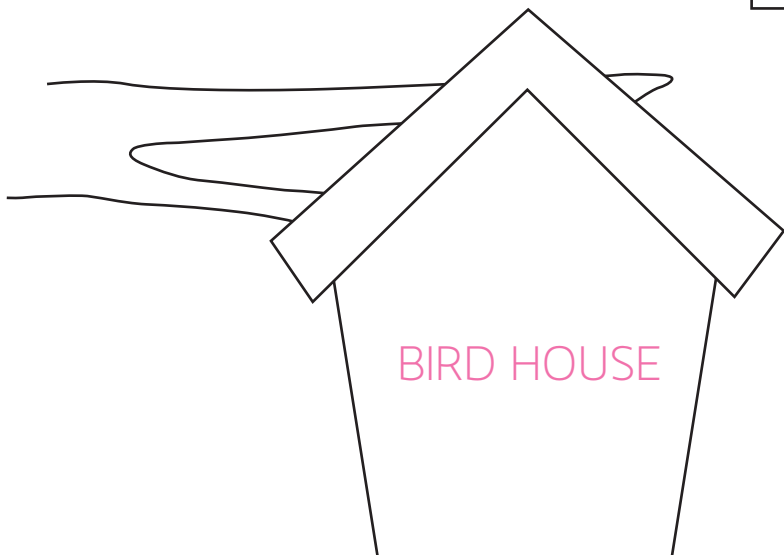
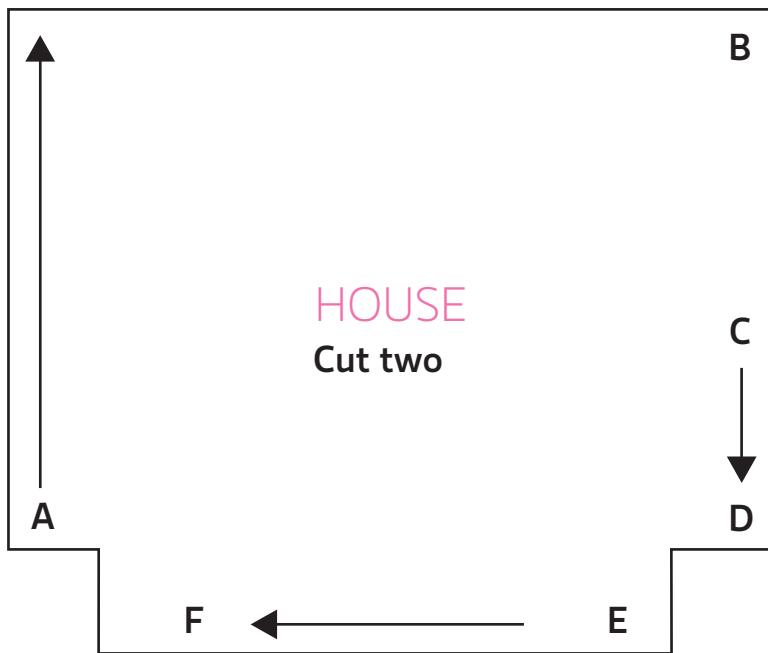




Title: New home set

Designer: Carolyn Letten

Magazine page: 58



*home
early bird*

EGG COSY COMB

Cut two

SIMPLE EGG COSY

Cut two from fabric

Cut two from lining

Cut two from wadding

EGG COSY
BEAK

Cut one

EGG COSY BODY

Cut two from fabric (one reversed)

Cut two from lining (one reversed)

Cut two from wadding (one reversed)

EGG BASKET
WATTLE

Cut two

EGG BASKET
COMB
Cut two

EGG BASKET HEAD
Cut two (one reversed)

TAIL

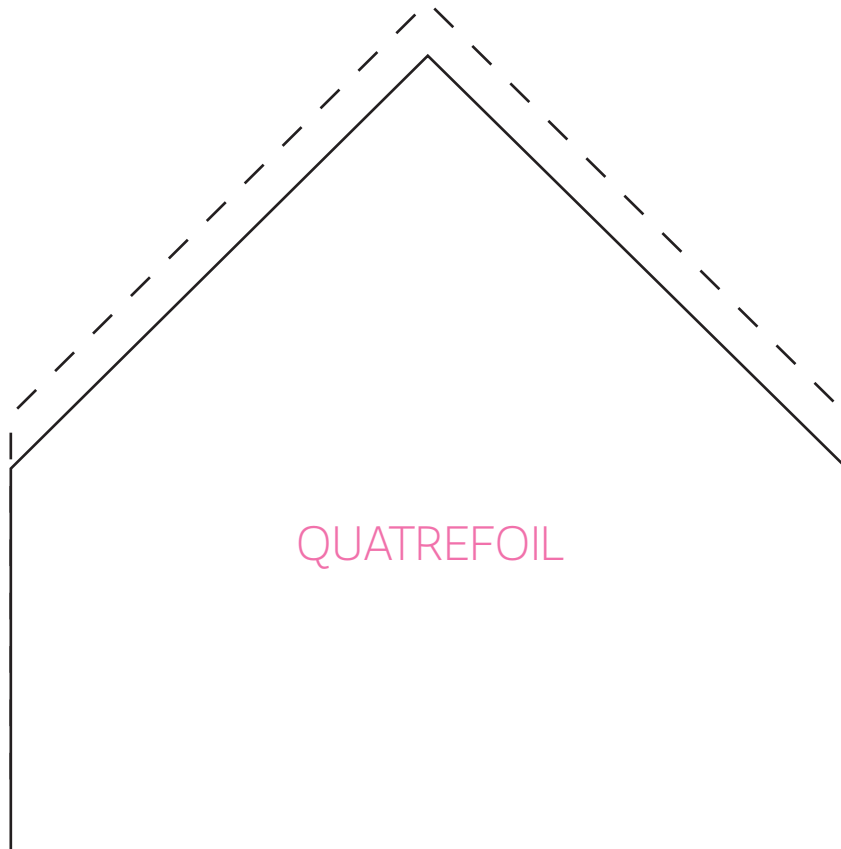
BOTTOM

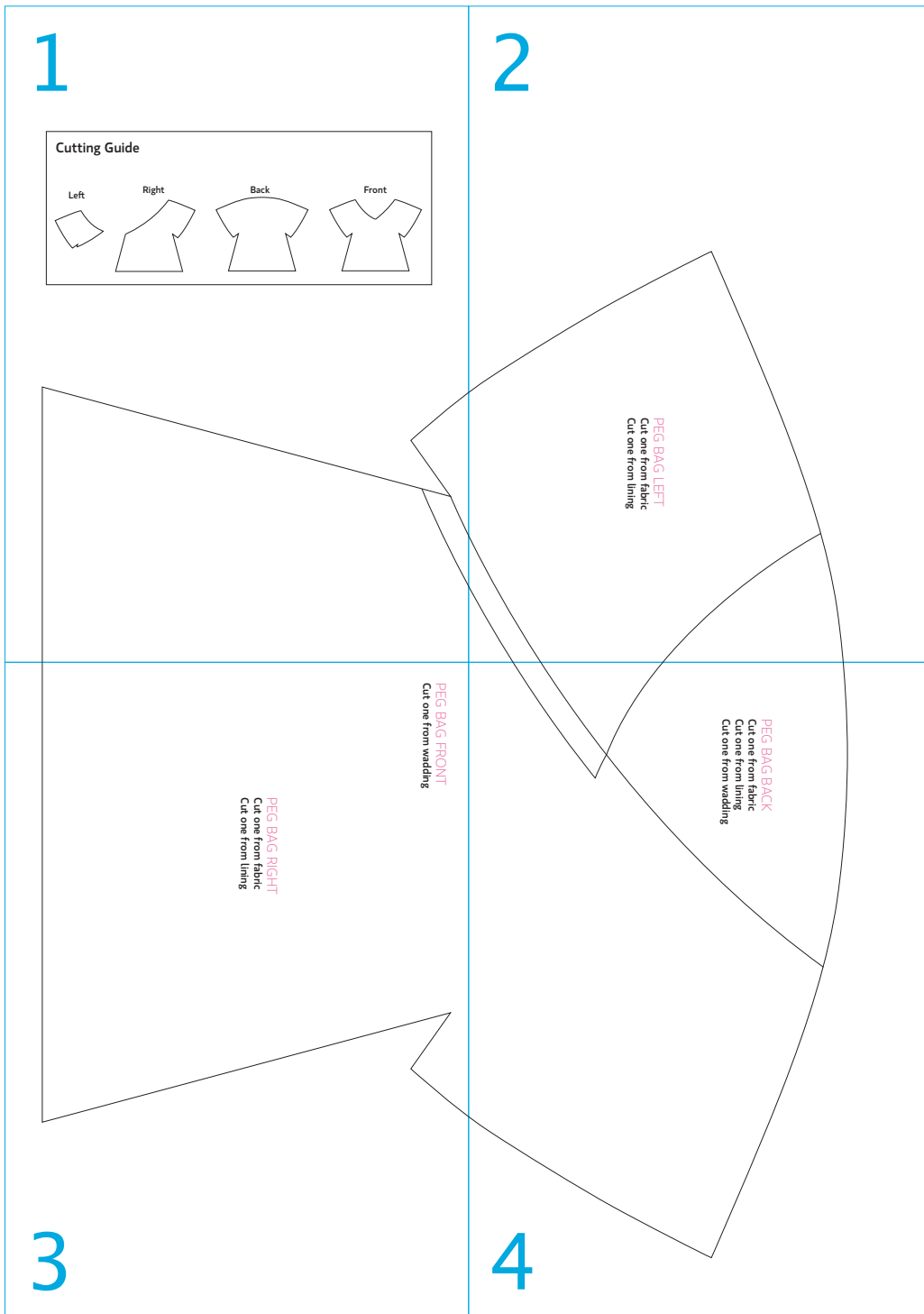
EGG BASKET BASE
Cut two from fabric
Cut one from wadding

EGG BASKET BODY
Cut two (one reversed)

NECK

EGG BASKET
BEAK
Cut two

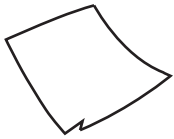




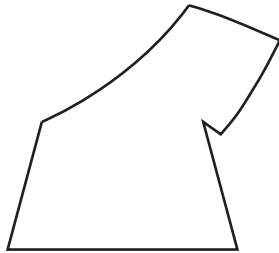
1

Cutting Guide

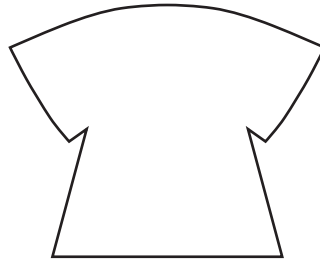
Left



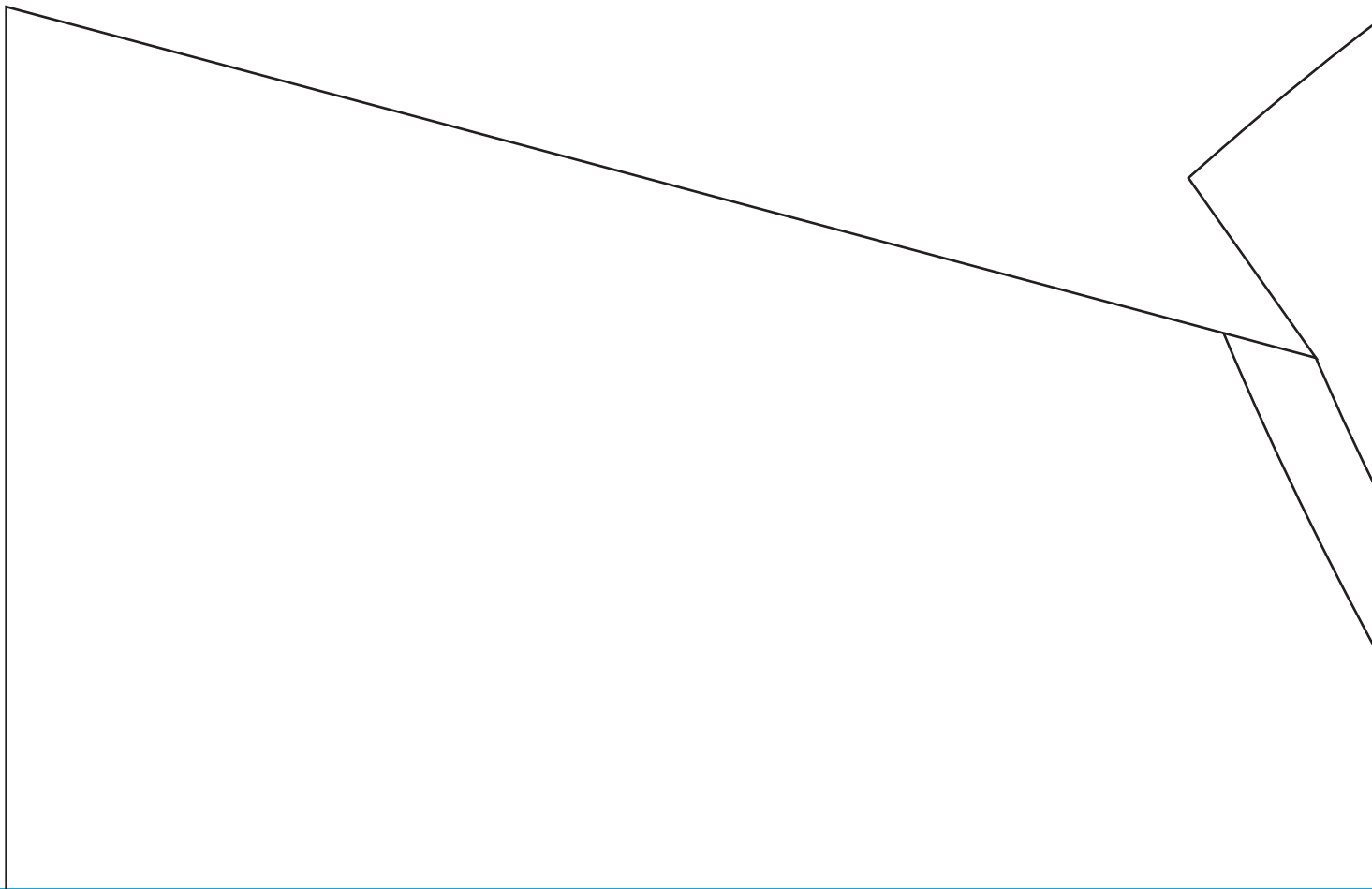
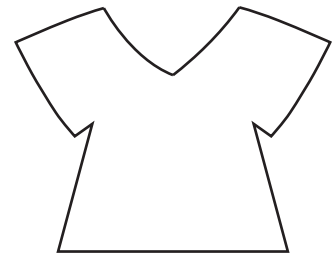
Right



Back

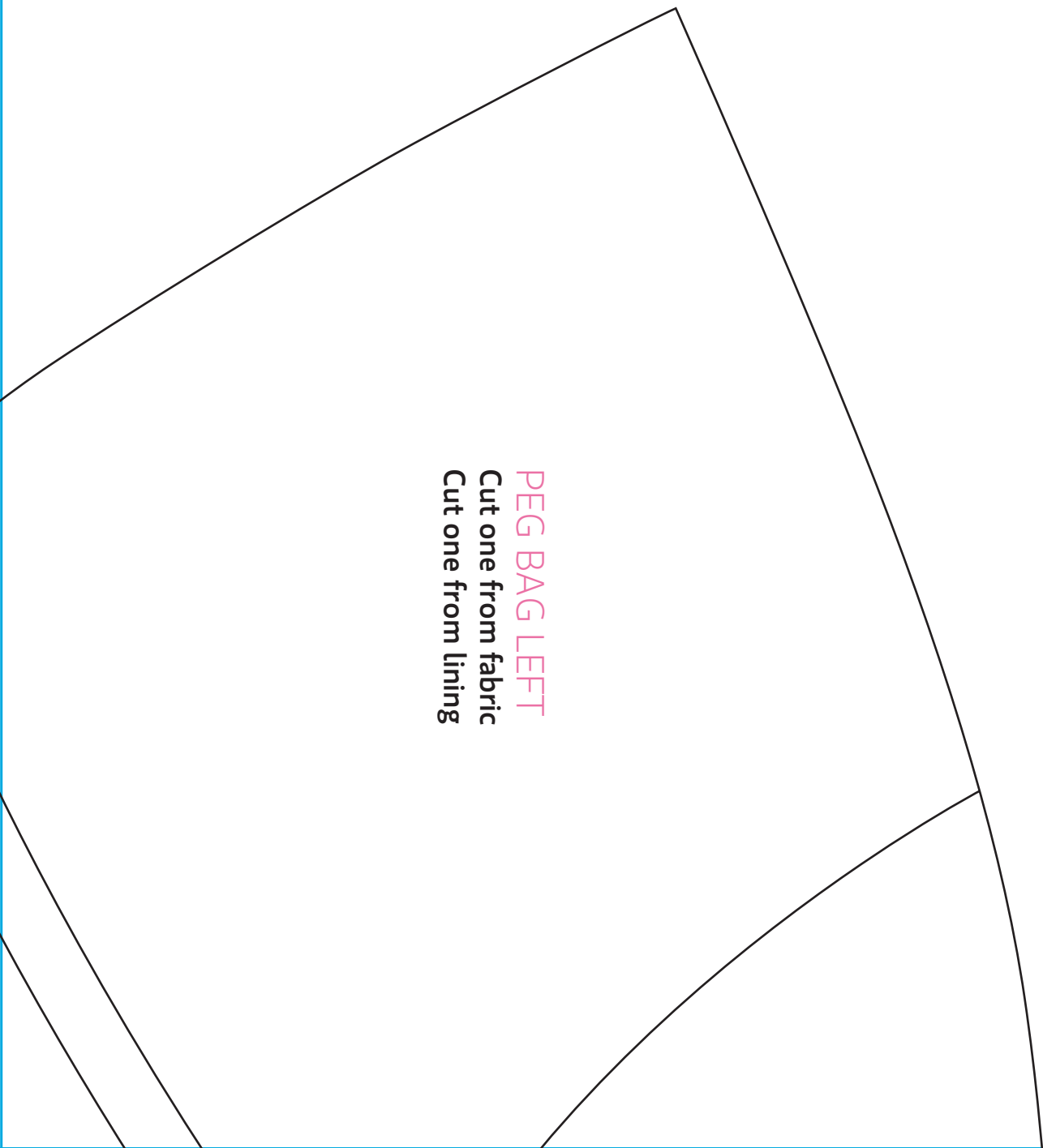


Front



2

PEG BAG LEFT
Cut one from fabric
Cut one from lining



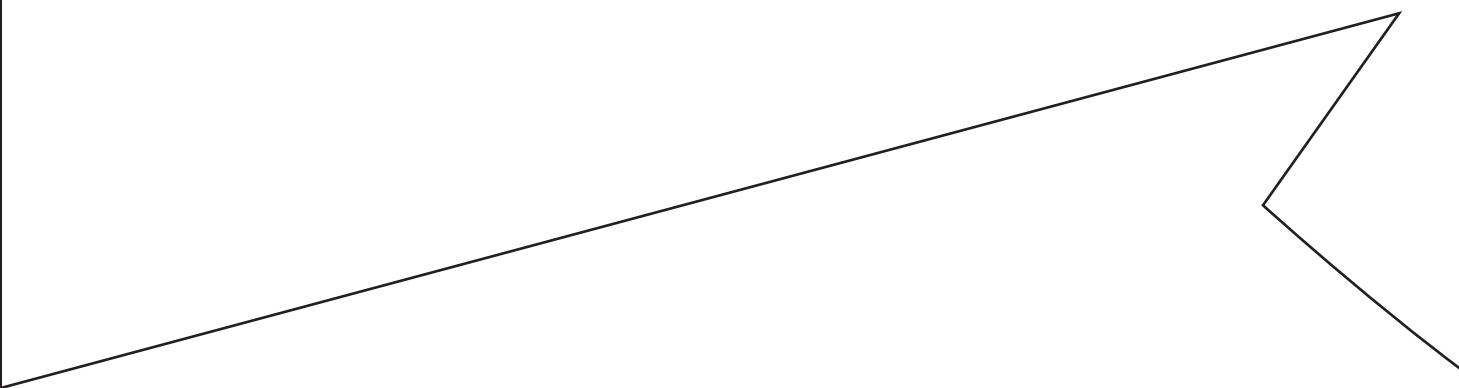
PEG BAG FRONT

Cut one from wadding

PEG BAG RIGHT

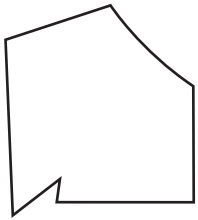
Cut one from fabric

Cut one from lining

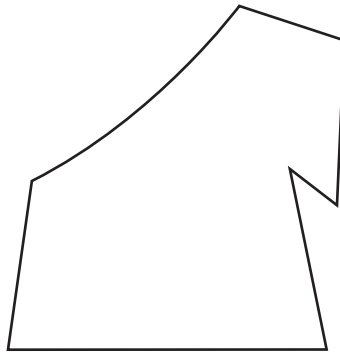




PEG BAG BACK
Cut one from fabric
Cut one from lining
Cut one from wadding

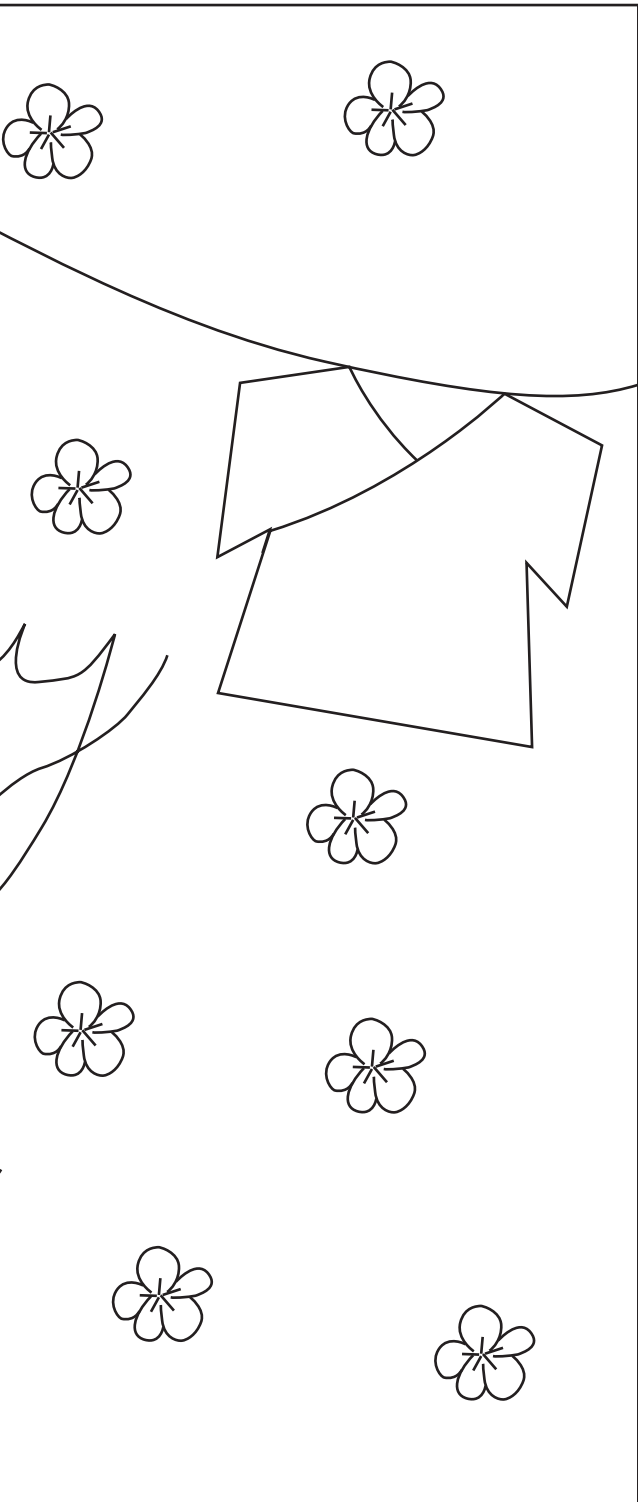


APPLIQUE
KIMONO LEFT
Cut two

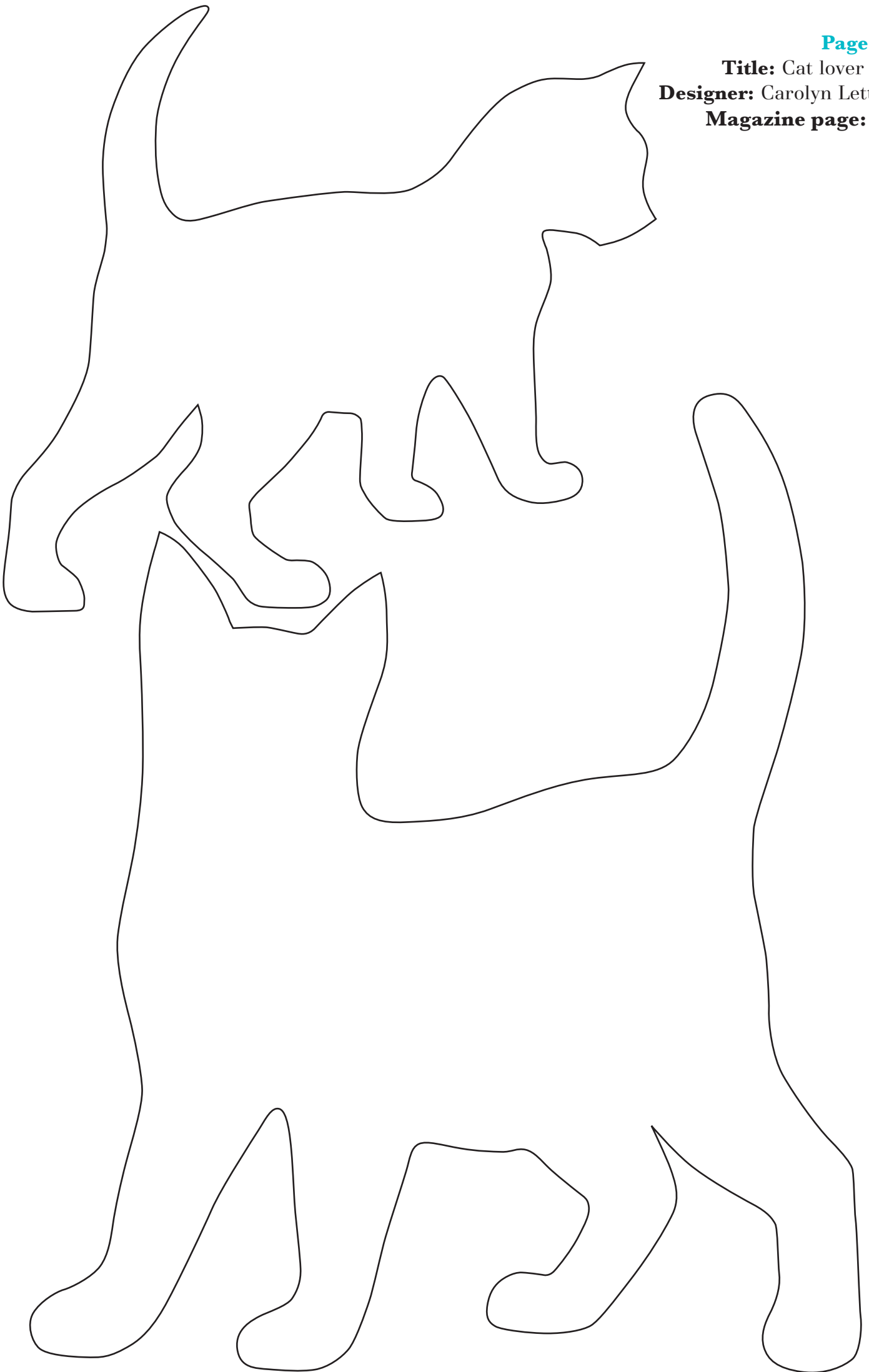


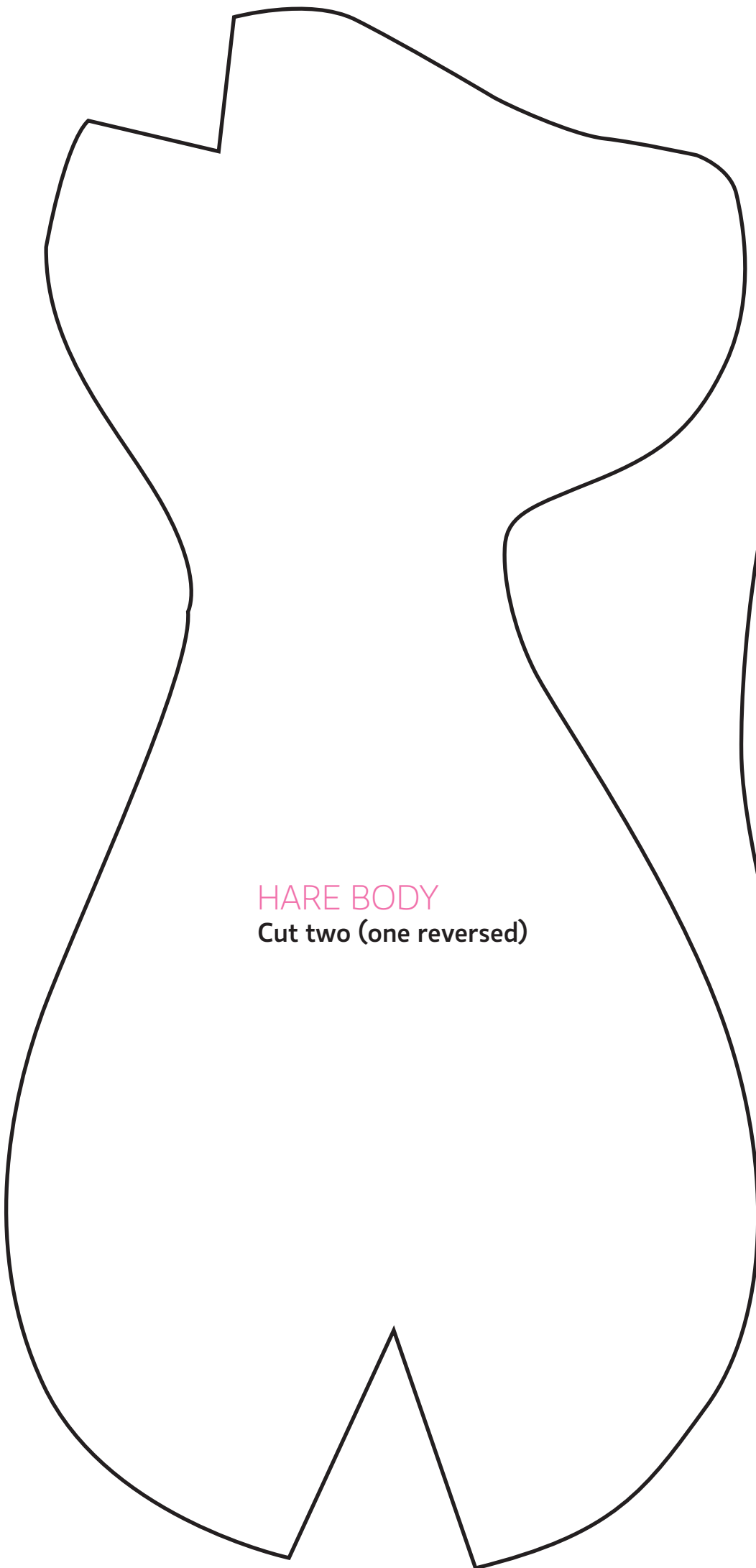
APPLIQUE
KIMONO RIGHT
Cut two





Title: Cat lover set
Designer: Carolyn Letten
Magazine page: 78

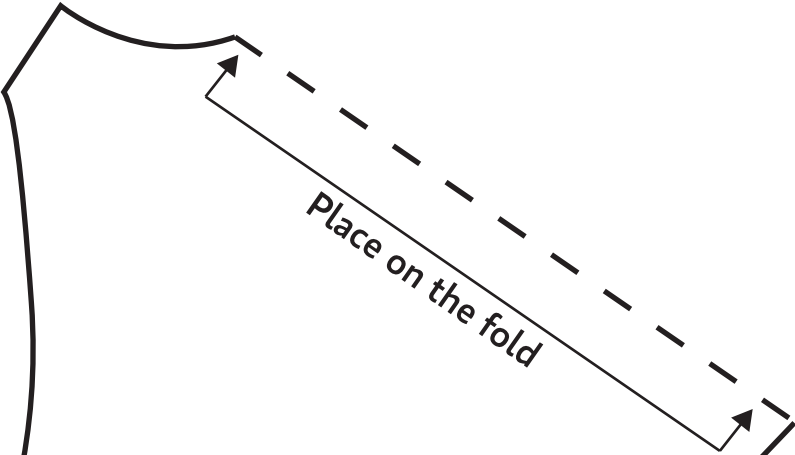




HARE BODY
Cut two (one reversed)



HARE EAR
Cut four



DRESS BODICE
Cut two on fold

HARE LEG
Cut four (two reversed)

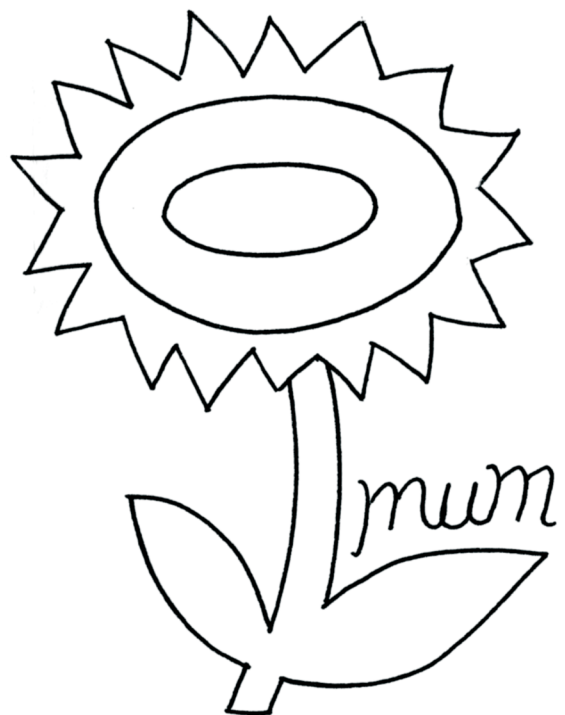
HARE ARM
Cut four (two reversed)

GLASSES CASE

Cut one from felt

Cut one from lining

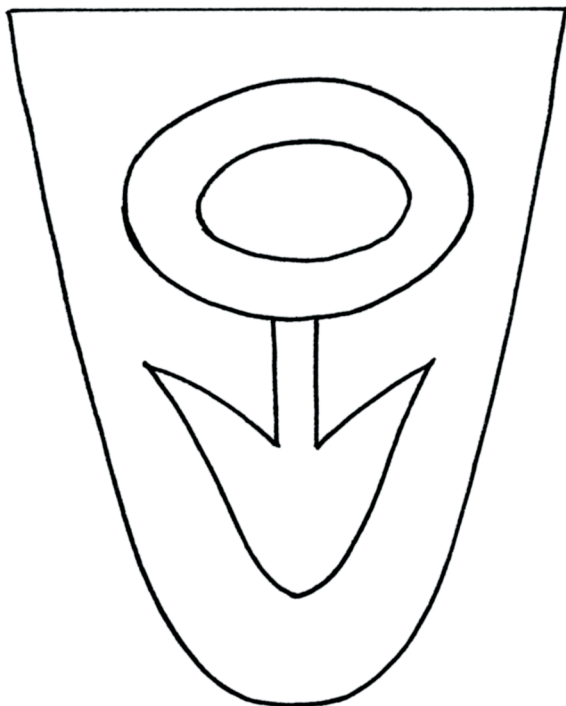
Fold fabric on dashed line



NAIL SCISSORS CASE FRONT

Cut one from felt

Cut one from lining



NAIL SCISSORS CASE BACK

Cut one from felt

Cut one from lining

