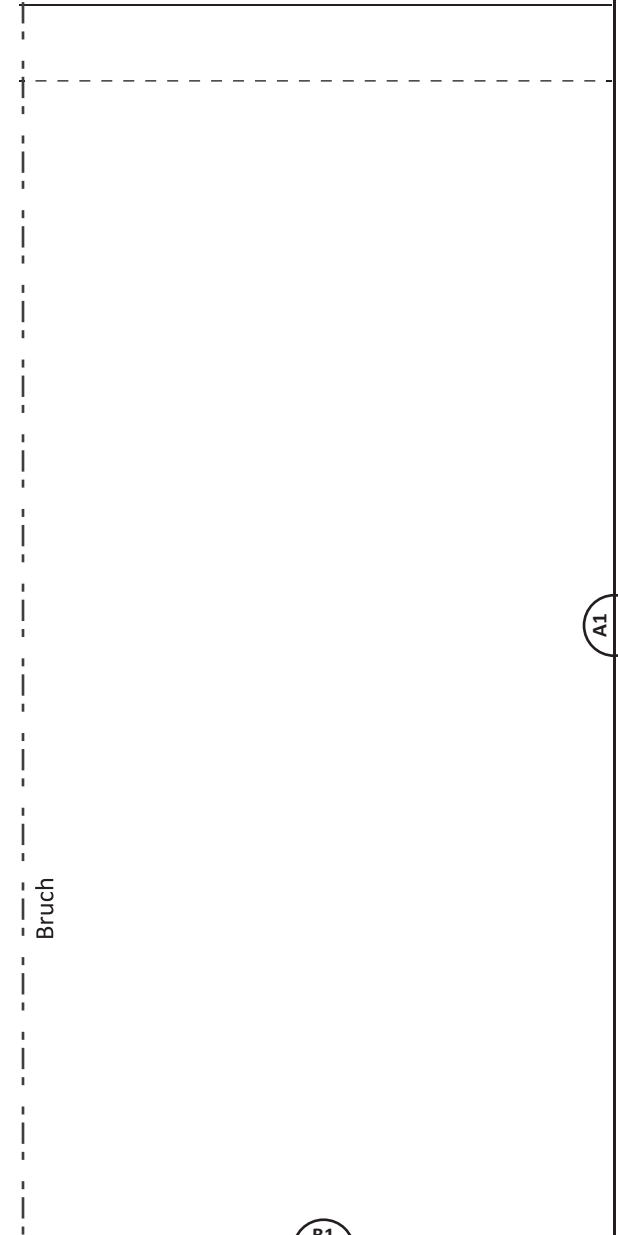
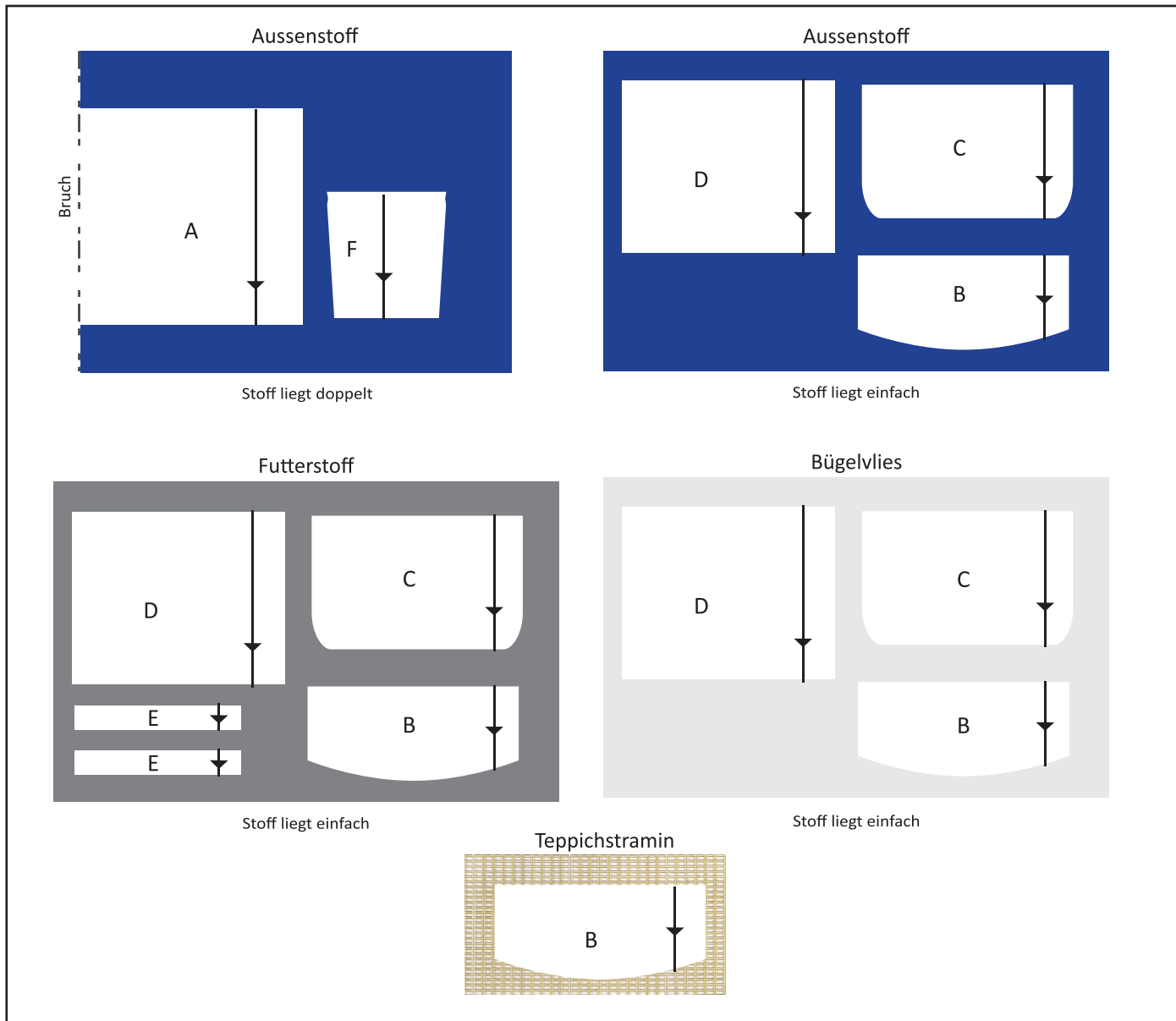


Zuschneideplan



1 cm

Kontrollkästchen - bitte nachmessen und prüfen, ob exakt Breite/Höhe 1 cm betragen

A1  
TV

Rucksack

A

1 x Aussenstoff

B2  
B2

Fadenlauf



B1  
18

A2  
24

2 cm Nahtzugabe

Rucksack

**F**

2 x Aussenstoff

Fadenlauf



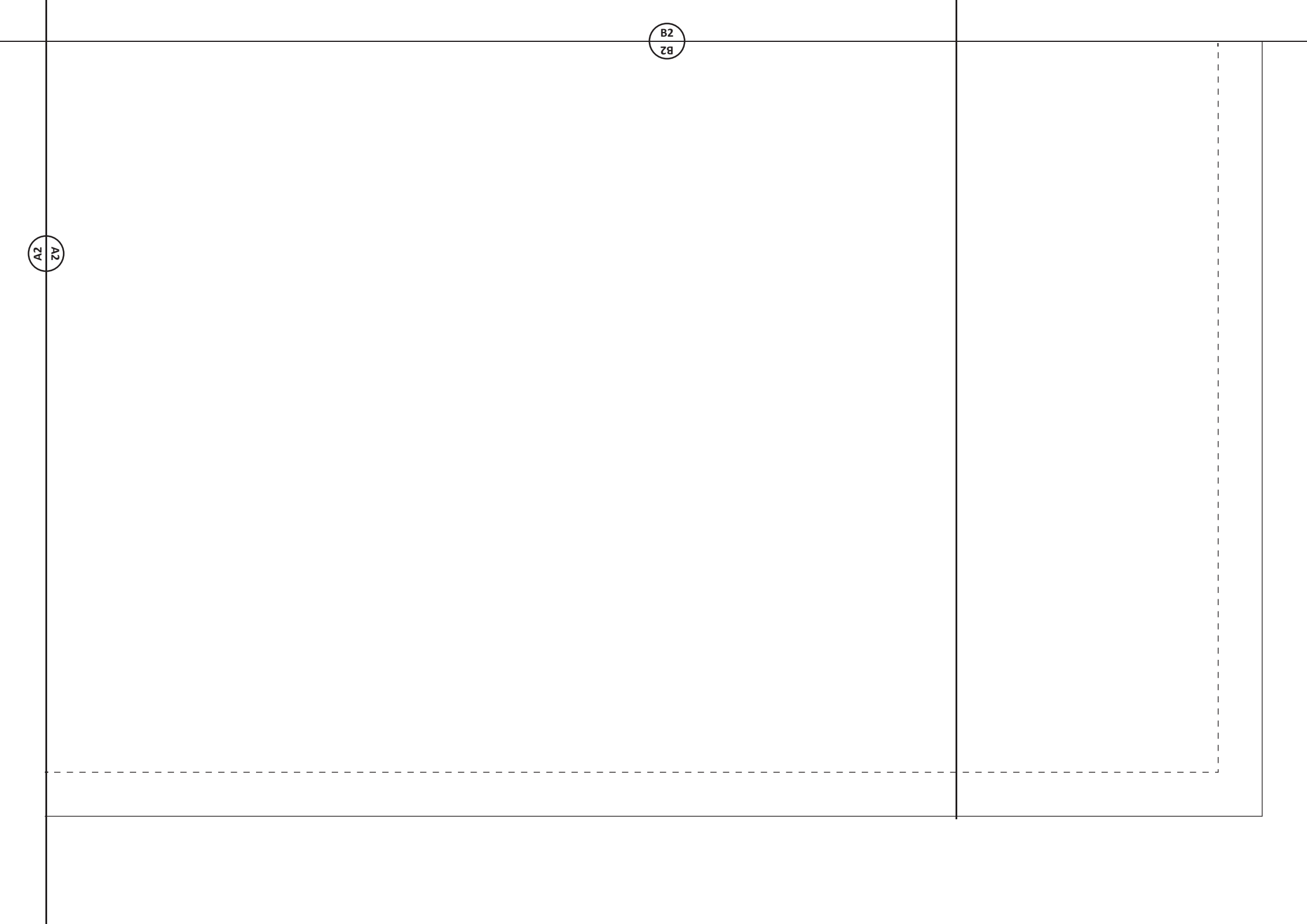
Position Verschluss  
Unterteil

1 cm Nahtzugabe

1 cm Nahtzugabe

B2

A2  
Z4



1 cm Nahtzugabe

Position  
Henkel

Position  
Träger

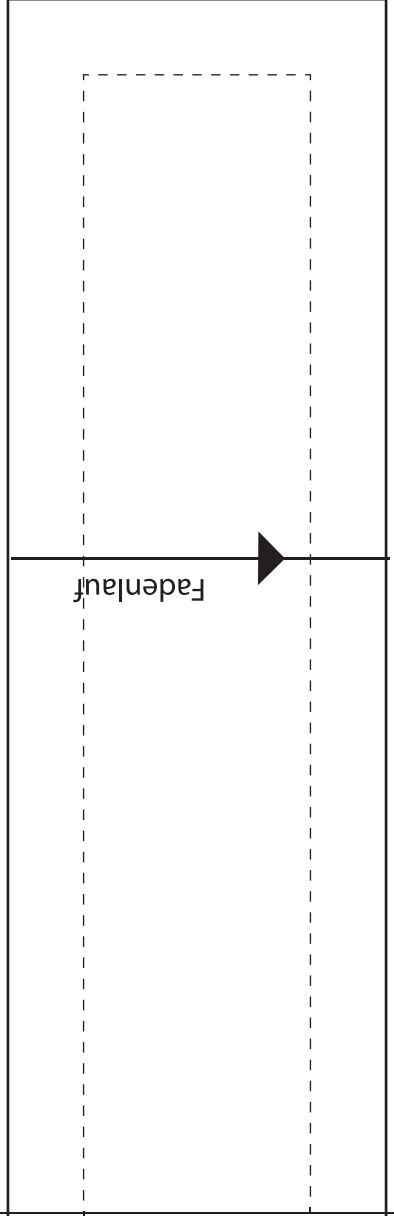
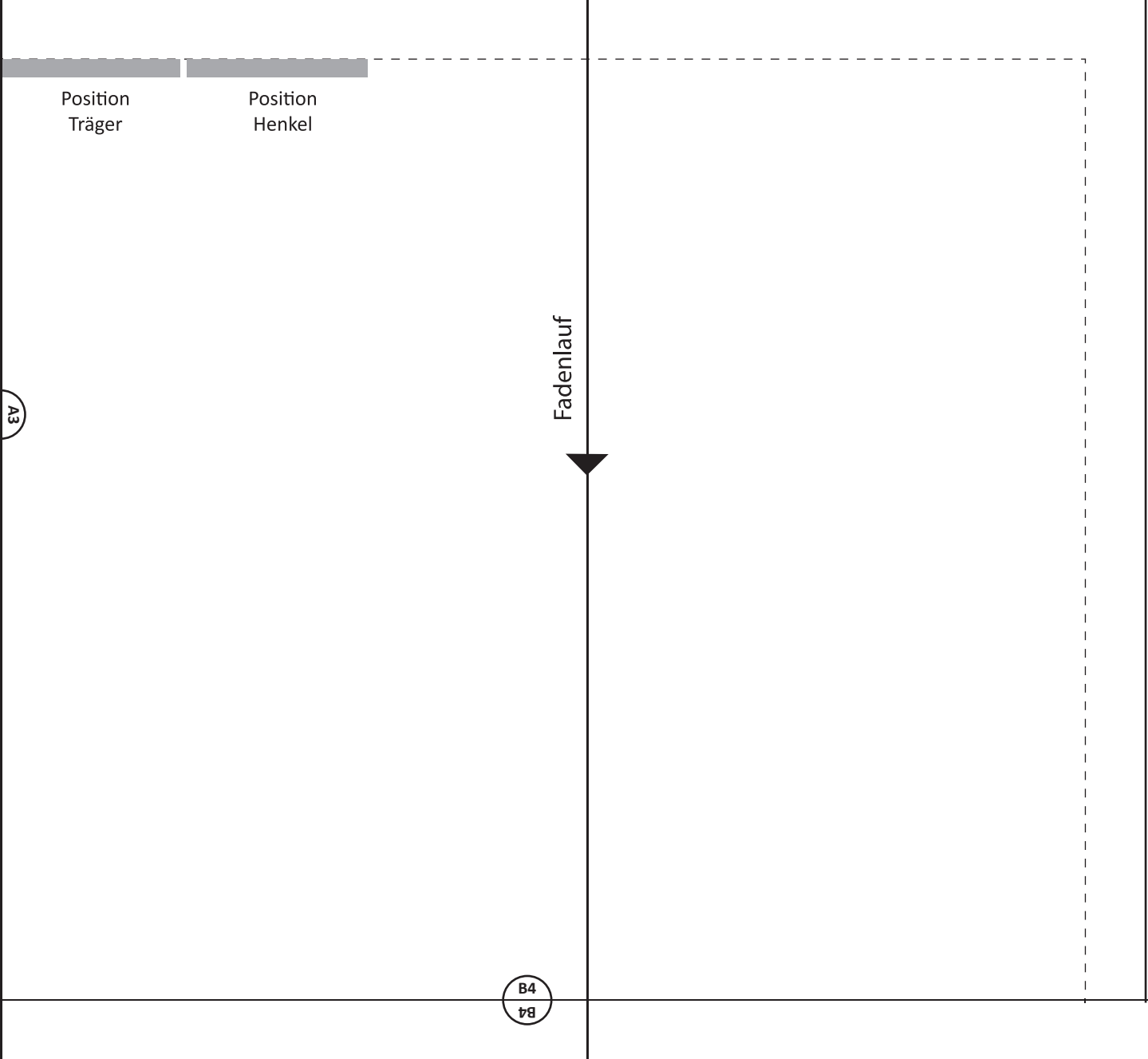
Rucksack

**D**

1 x Aussenstoff  
1 x Futter  
1 x Bügelvlies

A3  
A3

B3  
B3



B3

A4  
B4

Positionen Schlaufen



A4  
PV

B4  
B4

Positionen Schlaufen



1 cm Nahtzugabe

Rucksack

E

2 x Futter



1 cm Nahtzugabe

**Rucksack**

**B**

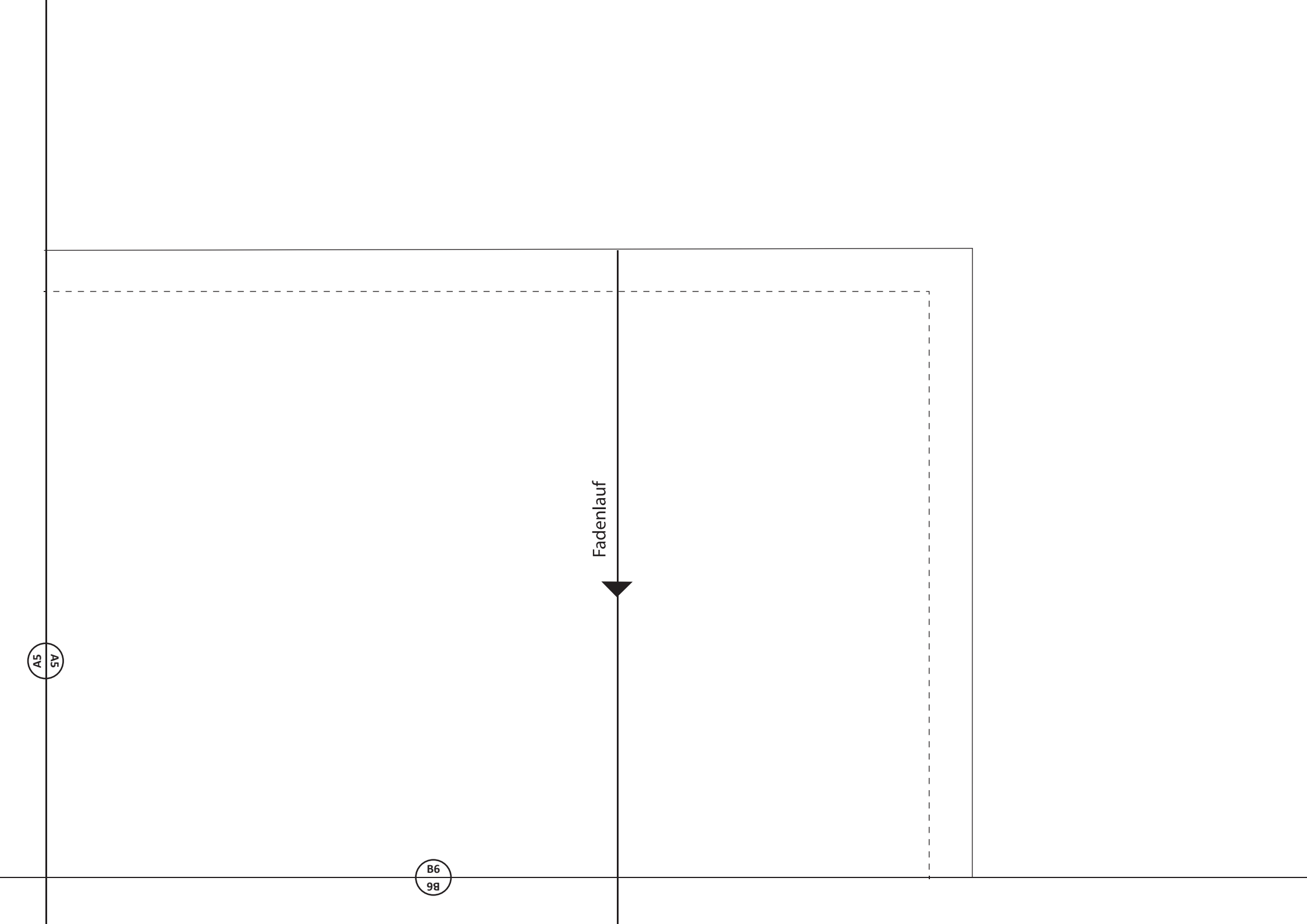
1 x Aussenstoff

1 x Futter

1 x Bügelvlies

A5  
5A

B5  
5B

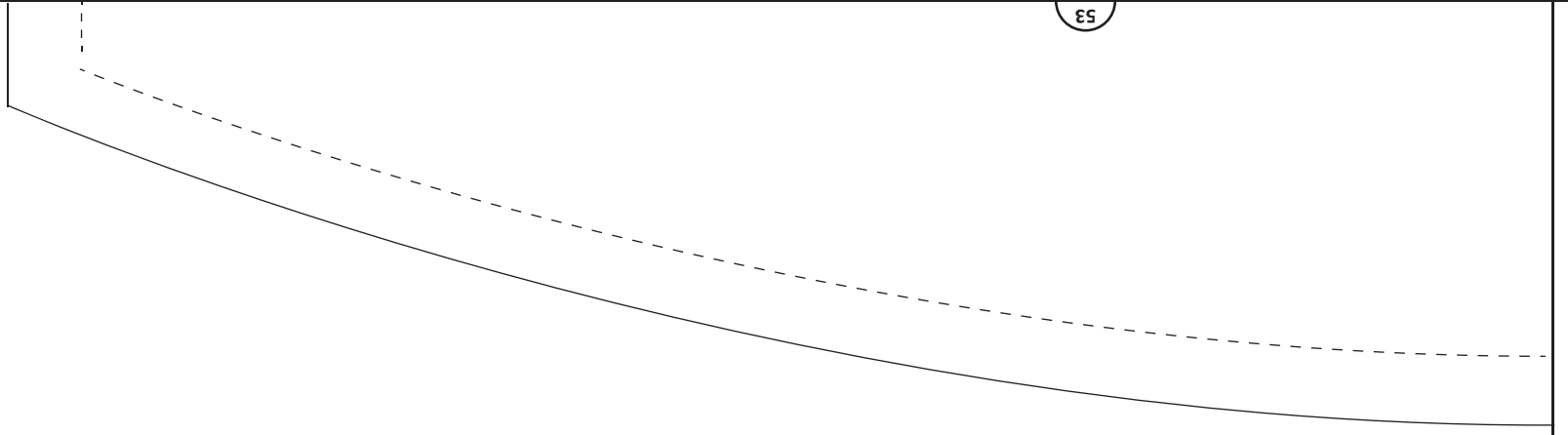


A5  
5V

B6  
9B

Fadenlauf

B5  
E5

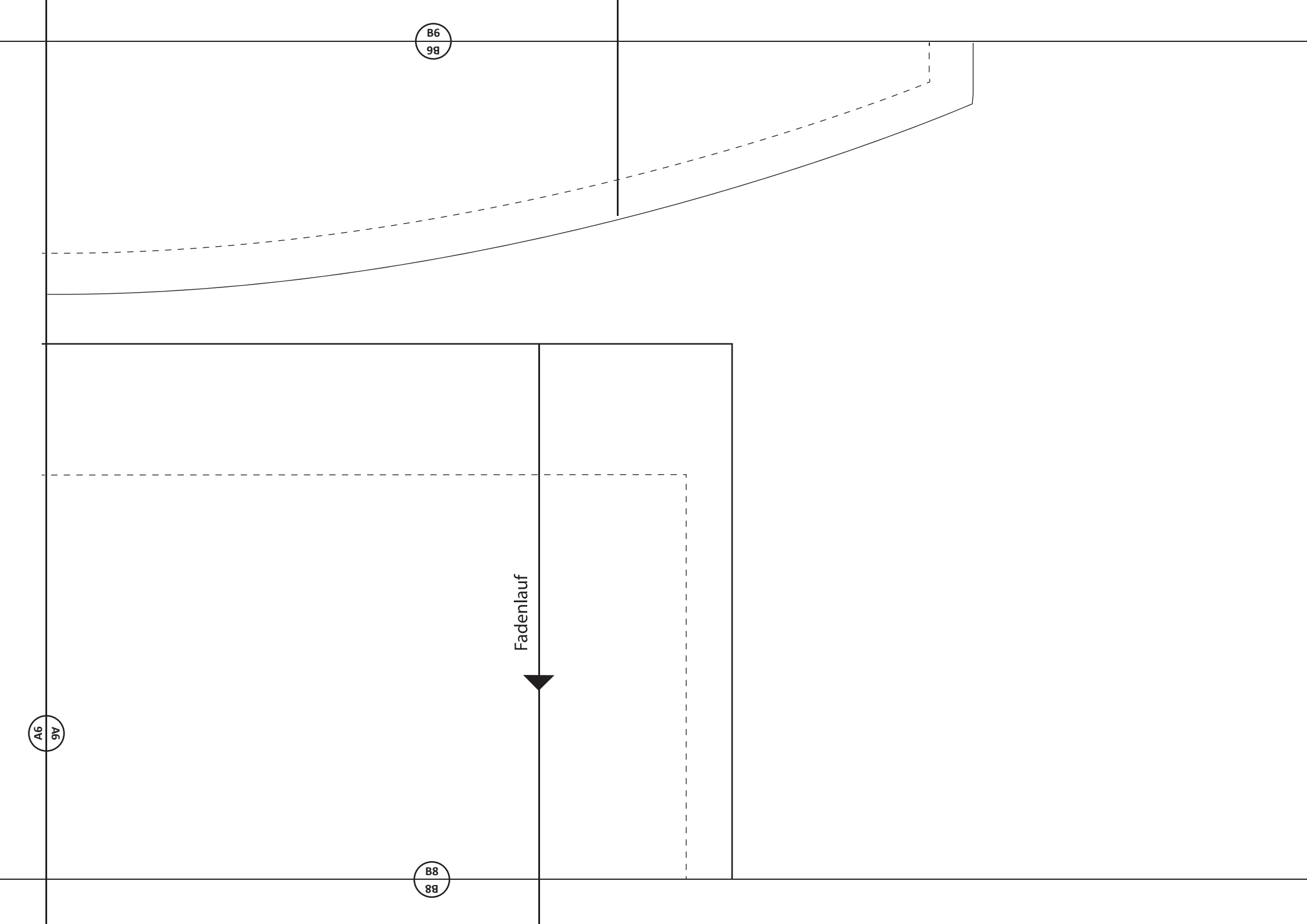


3 cm Nahtzugabe



A6  
96

B7  
E7



B6  
9B

A6  
9A

B8  
9B

B7

A7

**Rucksack**

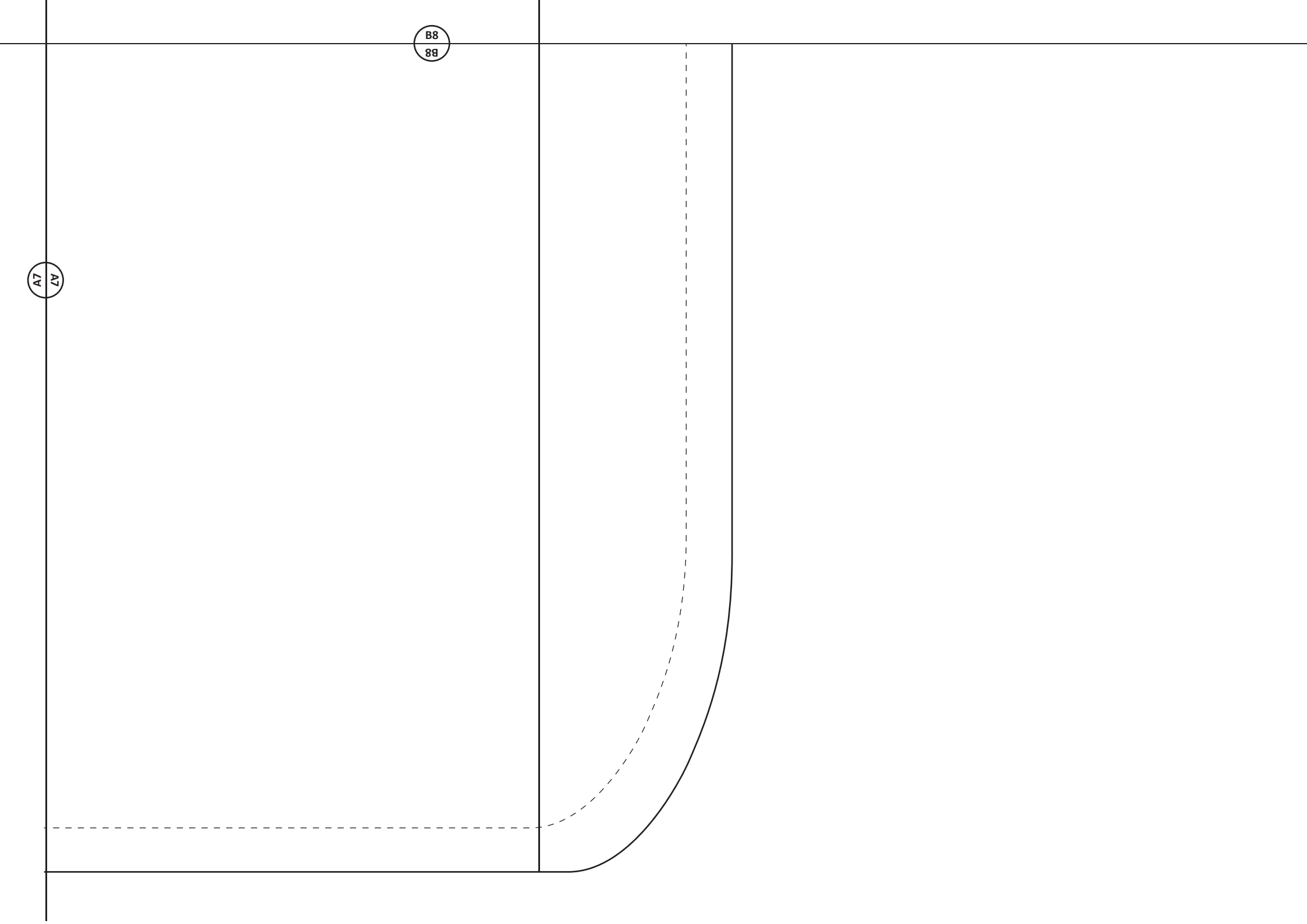
**C**

- 1 x Aussenstoff
- 1 x Futter
- 1 x Bügelvlies



Position Verschluss  
Oberteil

1 cm Nahtzugabe



A7

B8