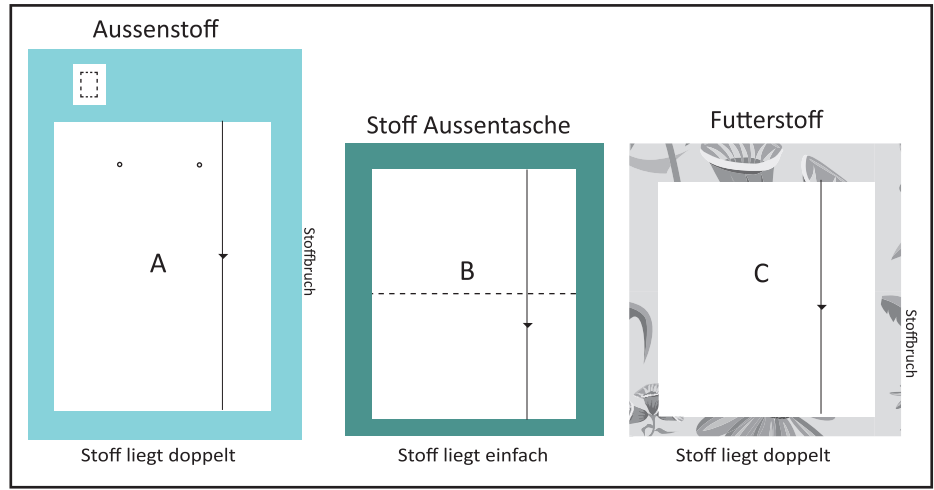
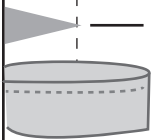


Zuschneideplan



1 cm Nahtzugabe



Position  
Seitenlasche

Saum



Position  
Nieten

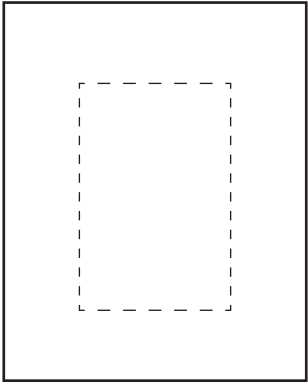
Shopper

**A**

2 x Außenstoff

A1  
T1

B1  
T8



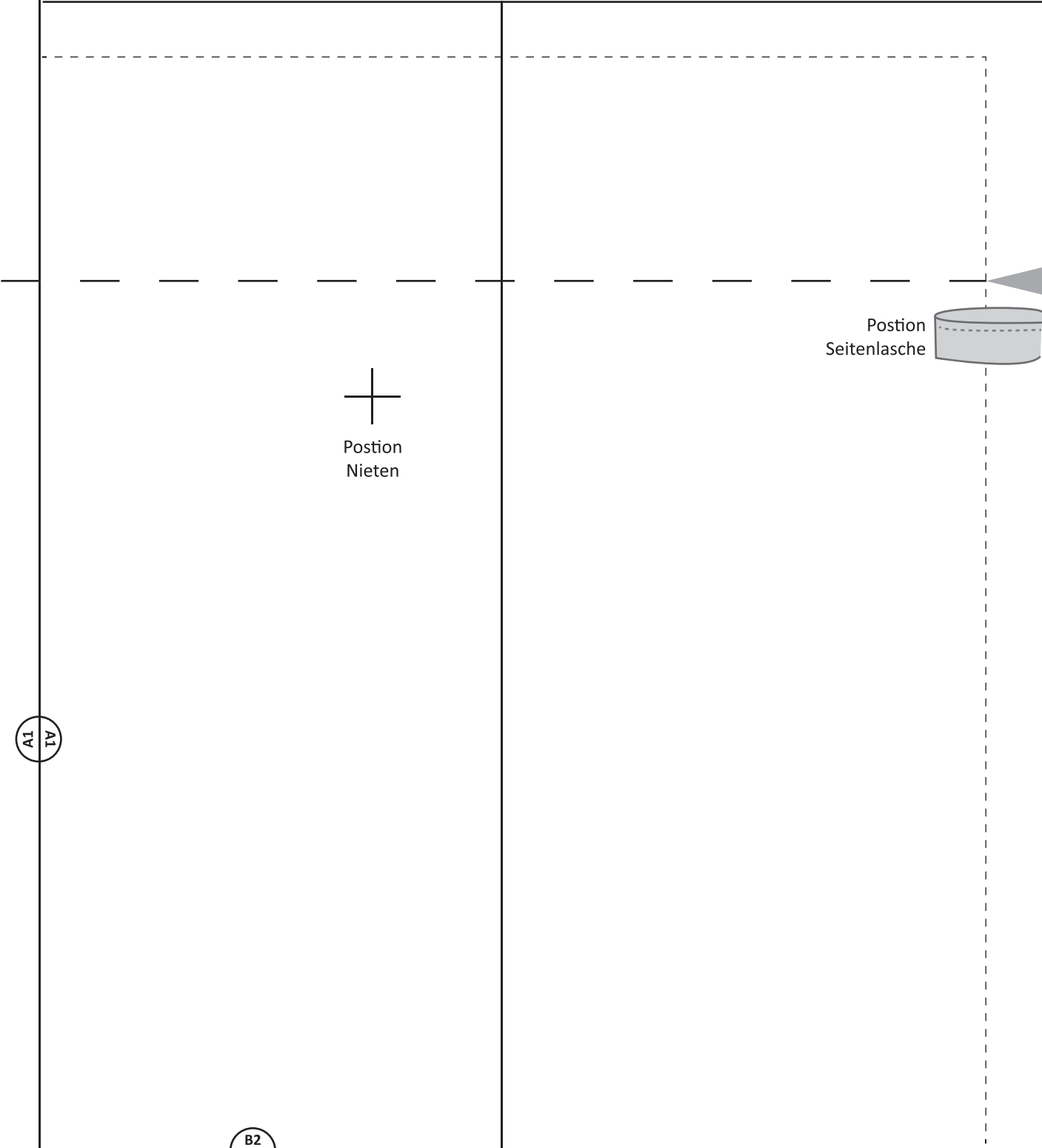
Shopper

# Seitenlasche

2 x Außenstoff

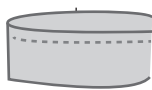
1 cm

Kontrollkästchen - bitte nachmessen und prüfen, ob exakt Breite/Höhe 1 cm betragen



Position  
Nieten

Position  
Seitenlasche

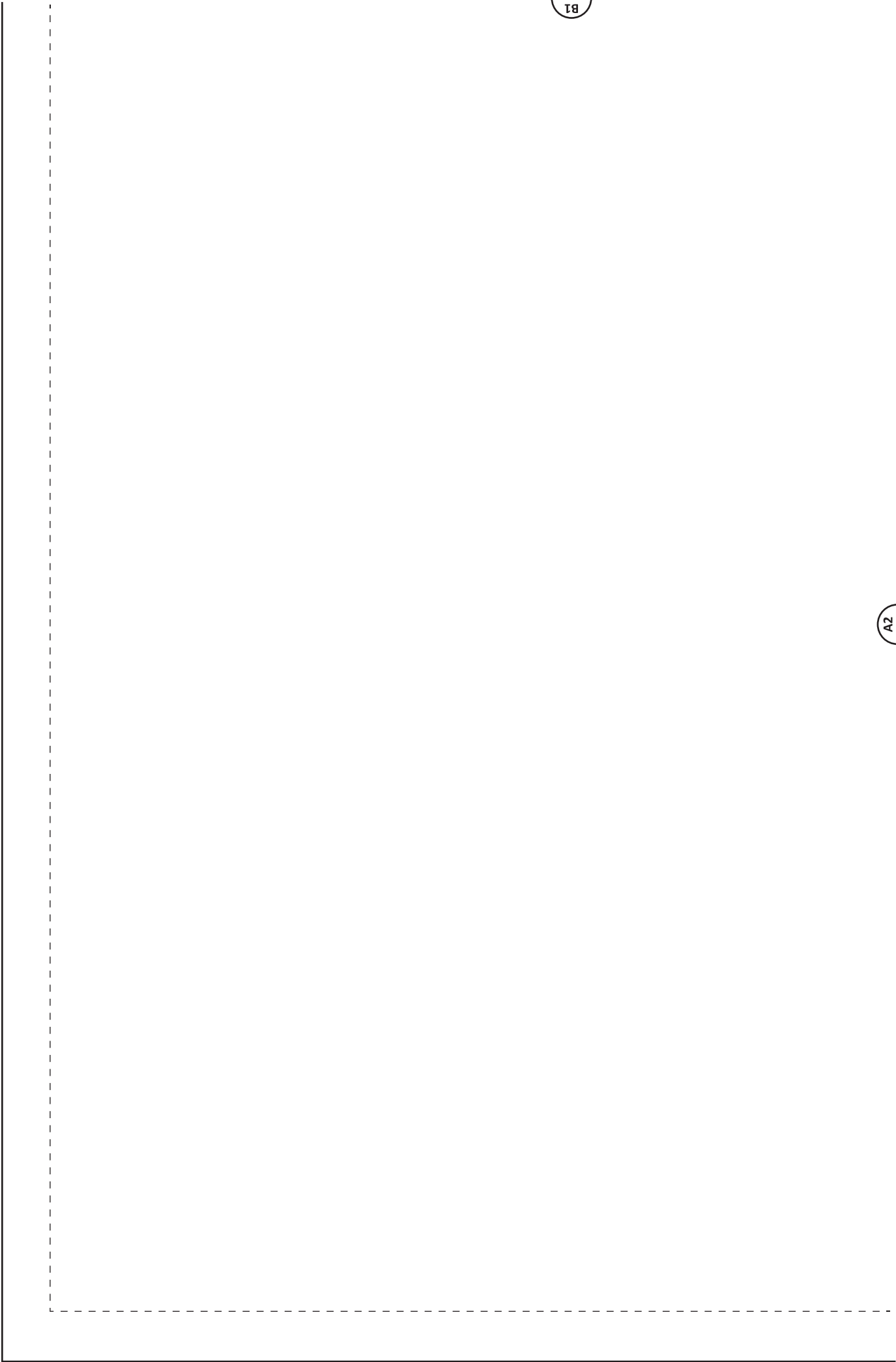


A1  
A1

B2  
B2

B1

A2



B2

Fadenlauf



A2  
ZV



1 cm Nahtzugabe

Shopper

**B**

1 x Stoff Vordertasche

A3

B3

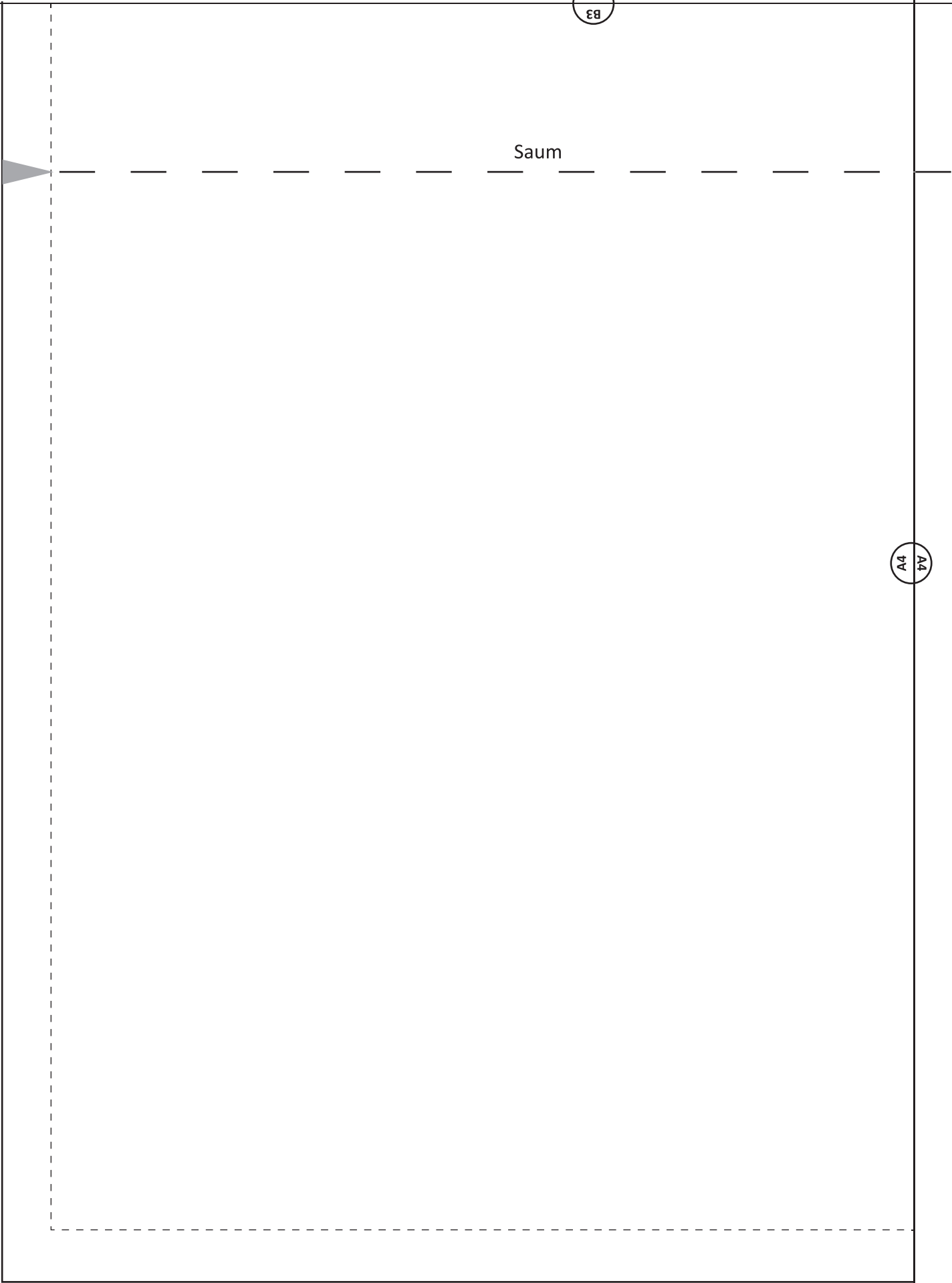
A3  
CV

B4  
B4

B3  
B3

Saum

A4  
A4



B4  
B4

Fadenlauf



A4  
A4





1 cm Nahtzugabe

Shopper

C

2 x Futter

A5  
A5

B5  
B5

A5  
A5

B6  
9B

B5  
B5

A6  
9A



B6  
9B

A6  
9A

Fadenlauf

