

Ofenhandschuh

Oberteil

- 1x Aussenstoff
- 1x Futterstoff
- 1-2x Vlieseline 272 Thermolan

1 cm Nahtzugabe enthalten

Oven Mitt

upper part

- 1x outer fabric
- 1x inner fabric
- 1-2x Pellon TP970 Thermolan Plus

includes 3/8" seam allowance

Anleitung:

[▶ patty.do/ofenhandschuh](https://patty.do/ofenhandschuh)

English Tutorial:

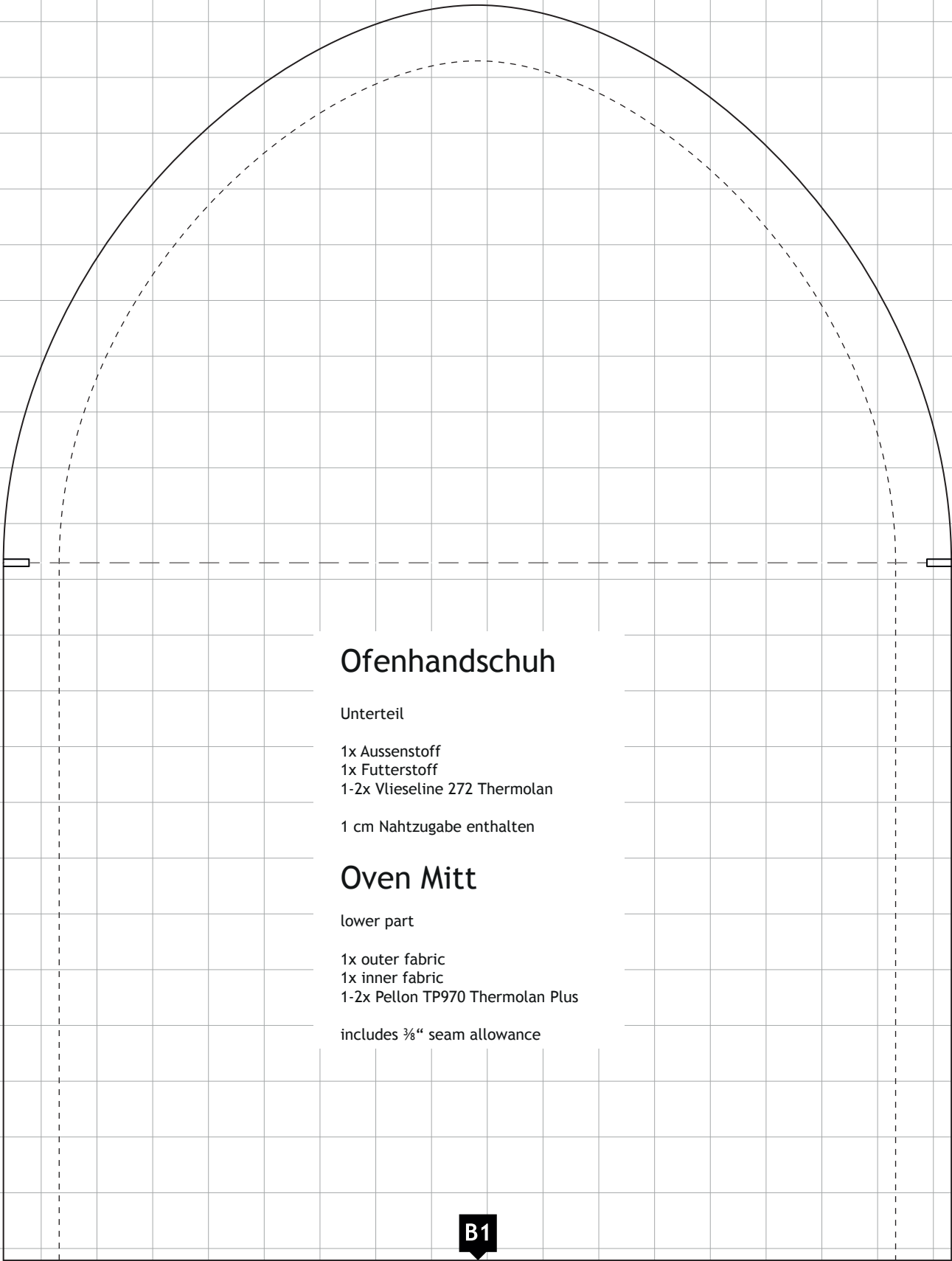
[▶ patty.do/oven-mitt](https://patty.do/oven-mitt)



Größenkontrolle



test square



Ofenhandschuh

- Unterteil
- 1x Aussenstoff
- 1x Futterstoff
- 1-2x Vlieseline 272 Thermolan
- 1 cm Nahtzugabe enthalten

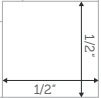
Oven Mitt

- lower part
- 1x outer fabric
- 1x inner fabric
- 1-2x Pellon TP970 Thermolan Plus
- includes 3/8" seam allowance

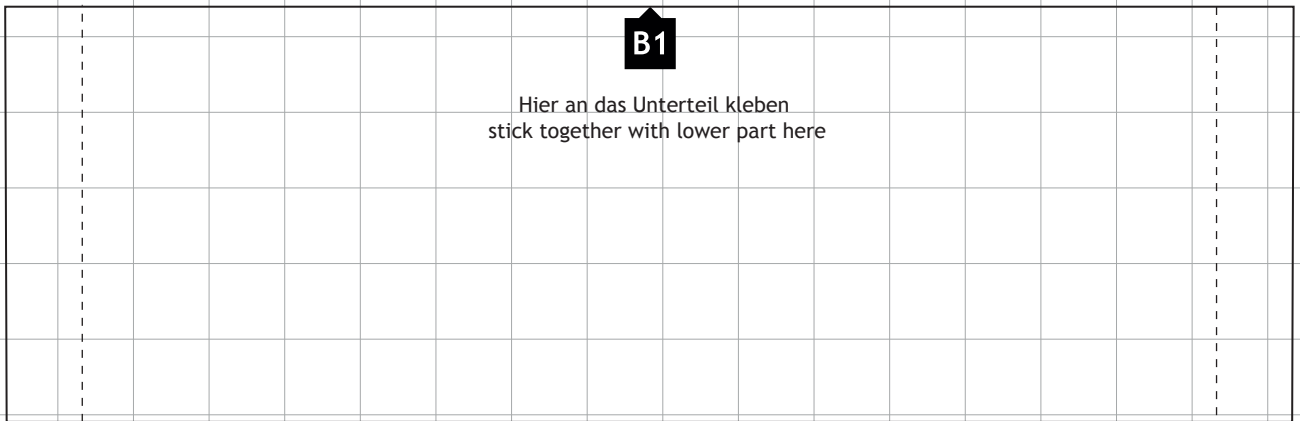
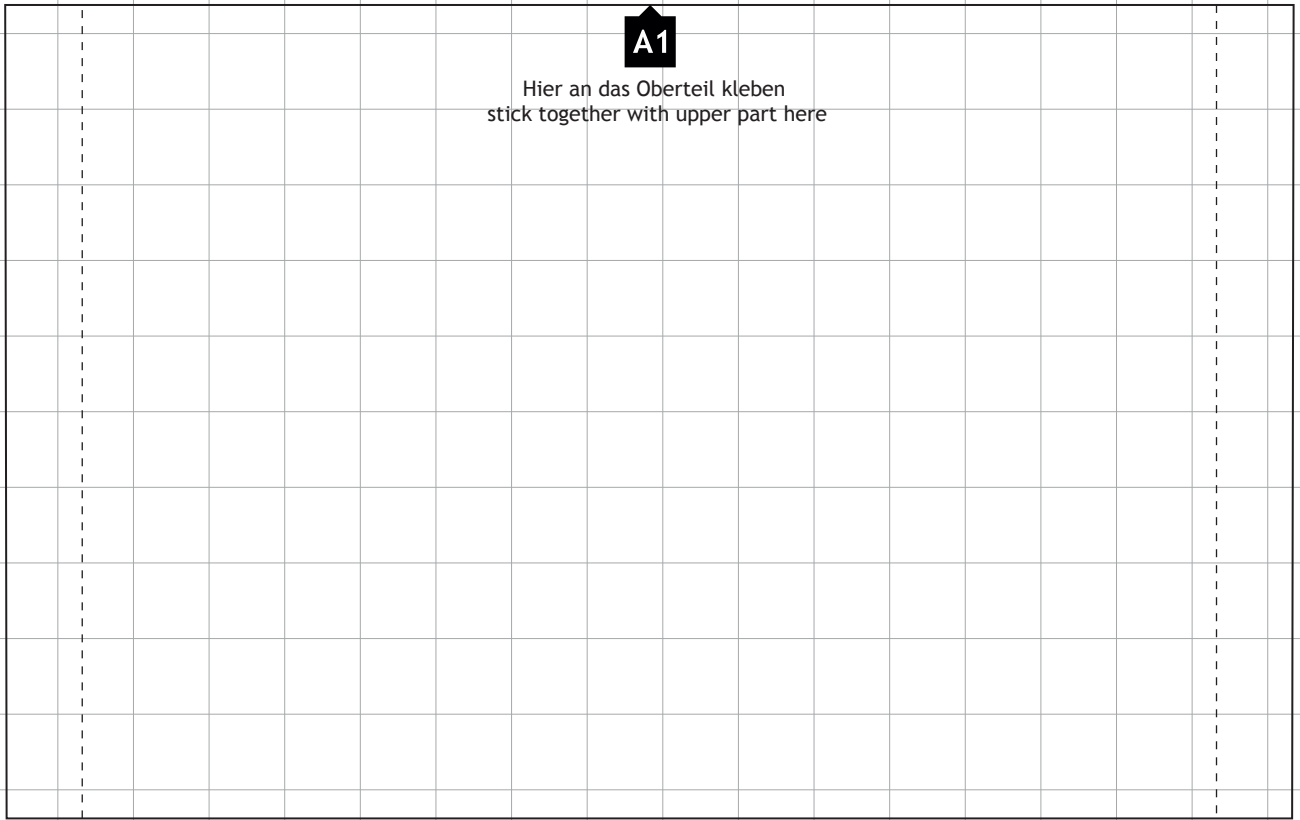
B1



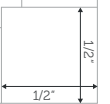
Größenkontrolle



test square



Größenkontrolle



test square

Ofenhandschuh

Innenteil
1x Aussenstoff
1x Futterstoff
1-2x Vlieseline 272 Thermolan

1 cm Nahtzugabe enthalten

Oven Mitt

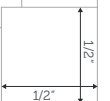
inner part

1x outer fabric
1x inner fabric
1-2x Pellon TP970 Thermolan Plus

includes 3/8" seam allowance



Größenkontrolle



test square