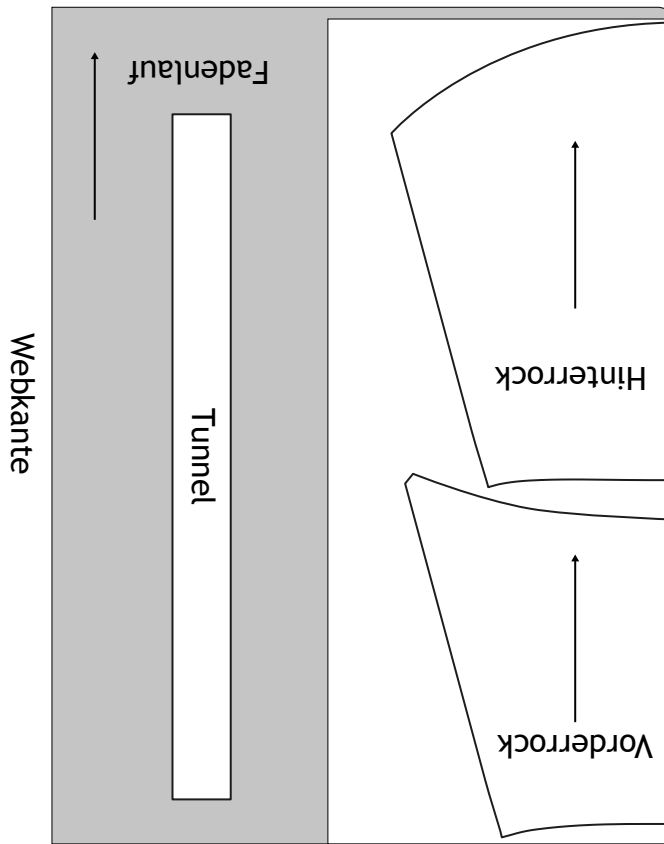


Stoffbreite 140 cm

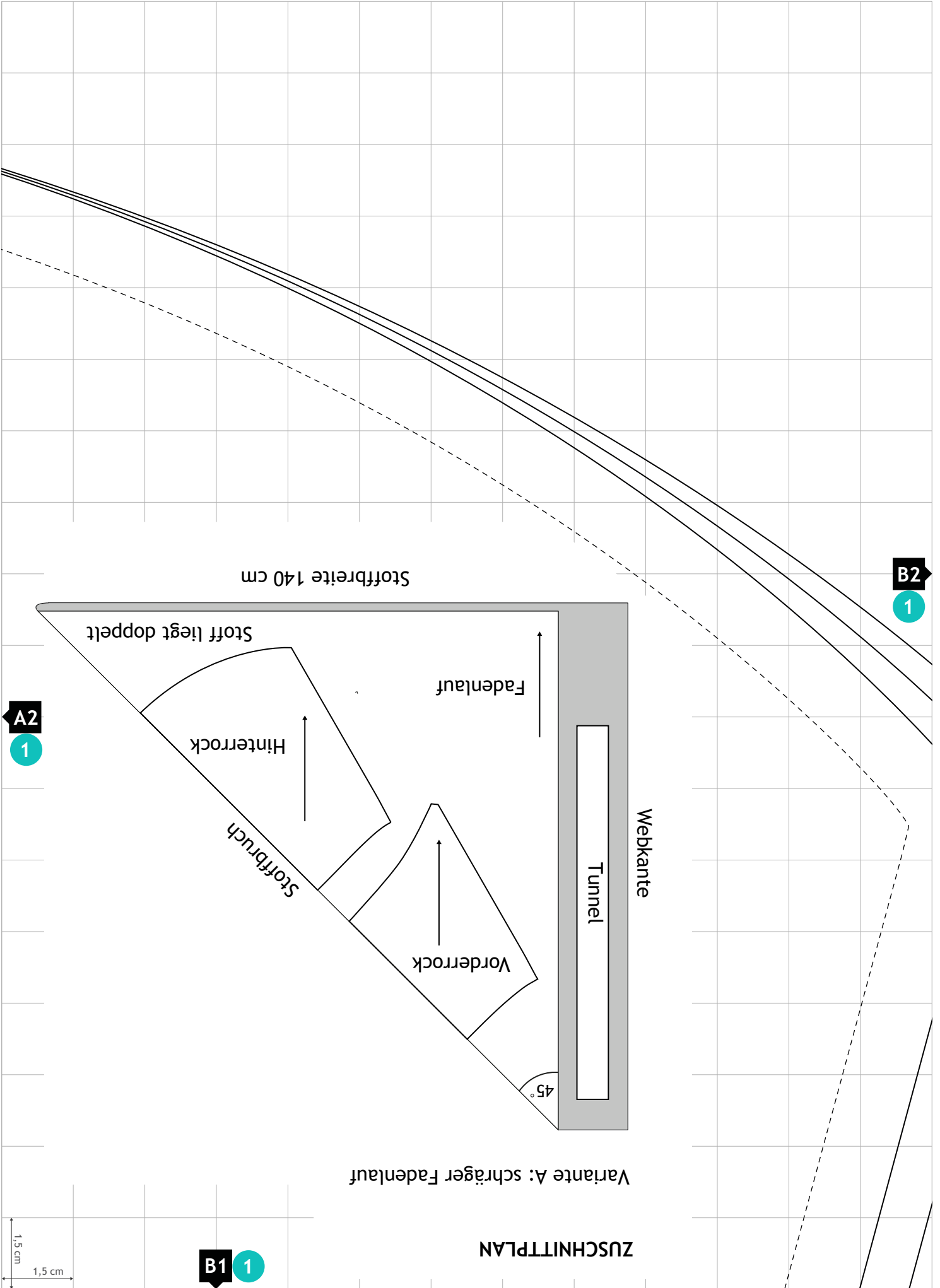


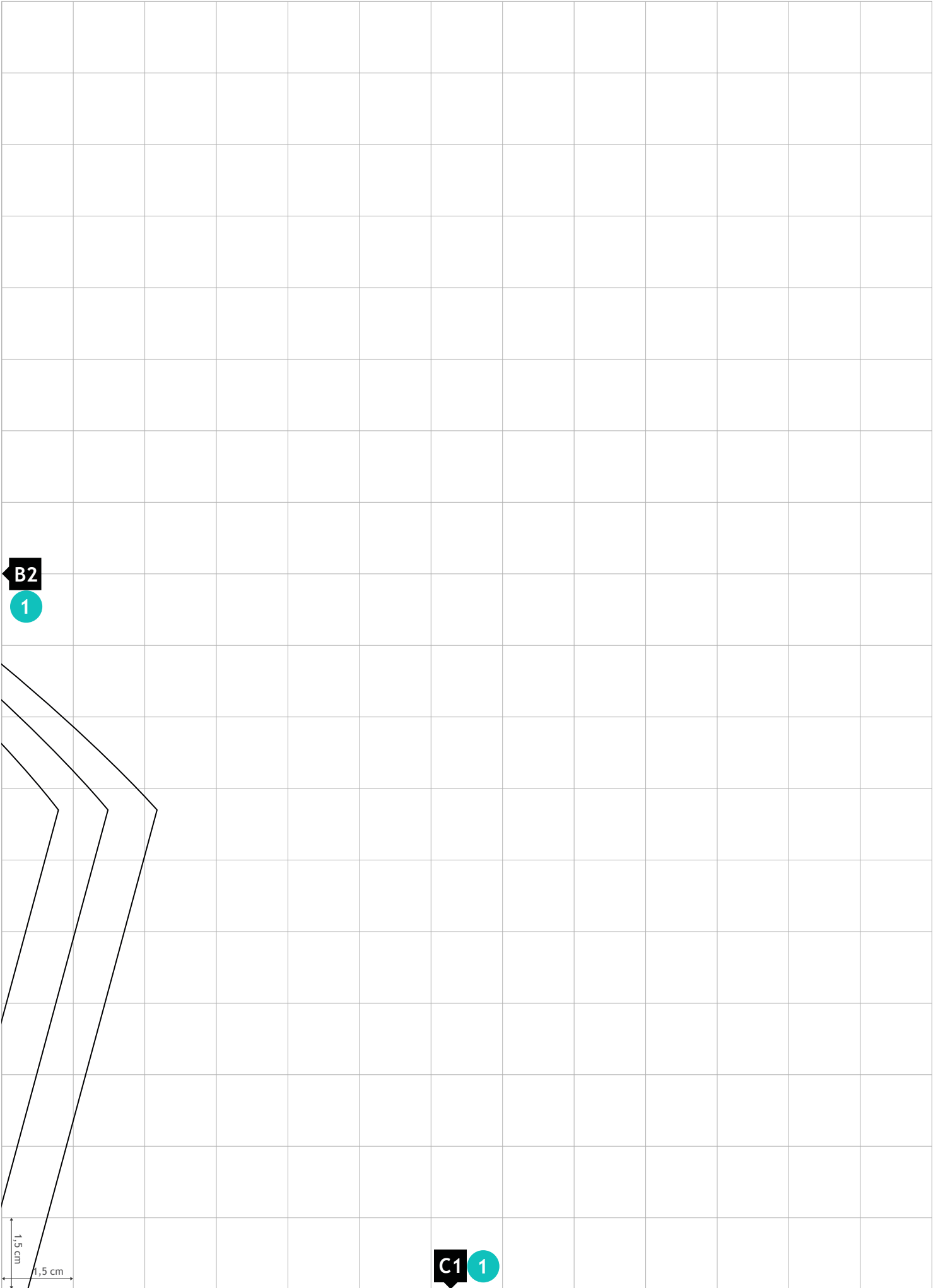
Variante B: gerader Fadenlauf

1,5 cm
1,5 cm

A1 1

A2
1





B2

1

C1

1

1,5 cm
1,5 cm

A1 1

Bundweite	91 cm	95 cm	99 cm
Größe	S	M	L

Rocklänge (inkl. Gummibund): vorn 45 cm / hinten 65 cm

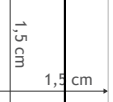
FERTIGMAßE

G2 1

Stoffbruch / hintere Mitte

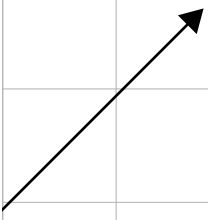
Fadenlauf

G1 1



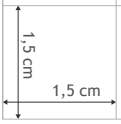
Größenkontrolle

B1 1

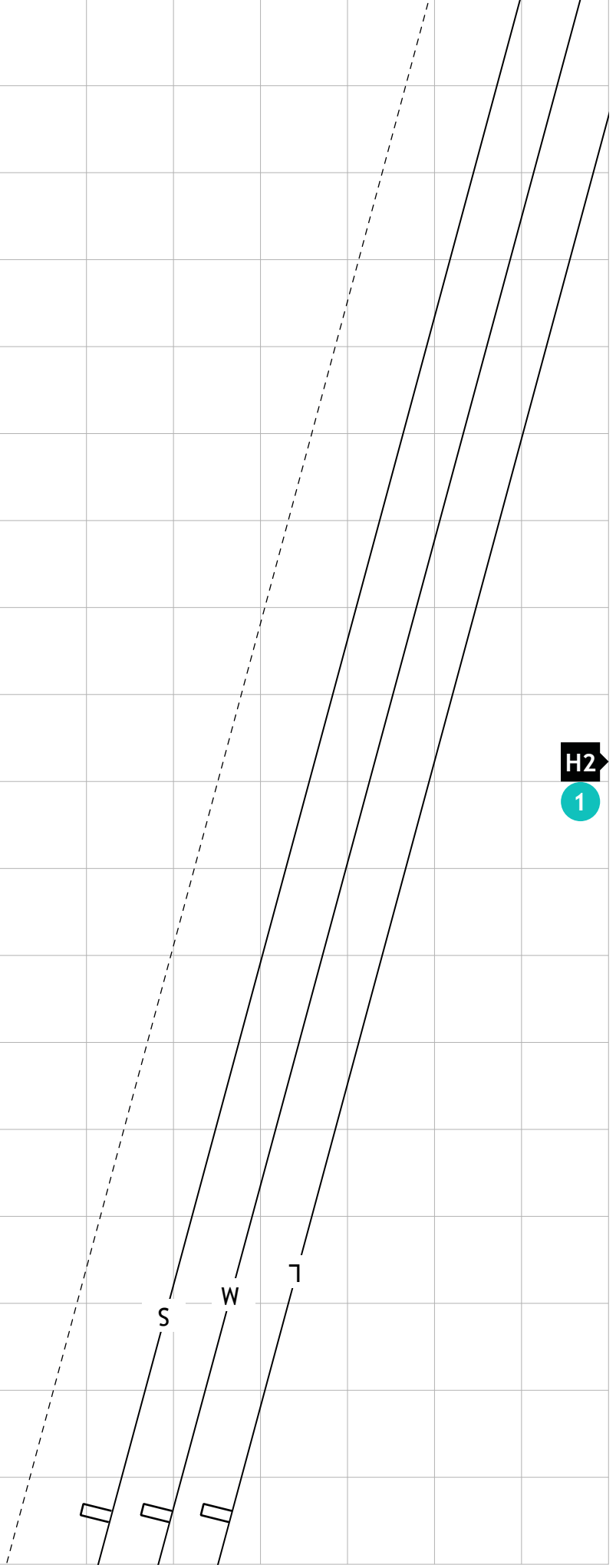


G2
1

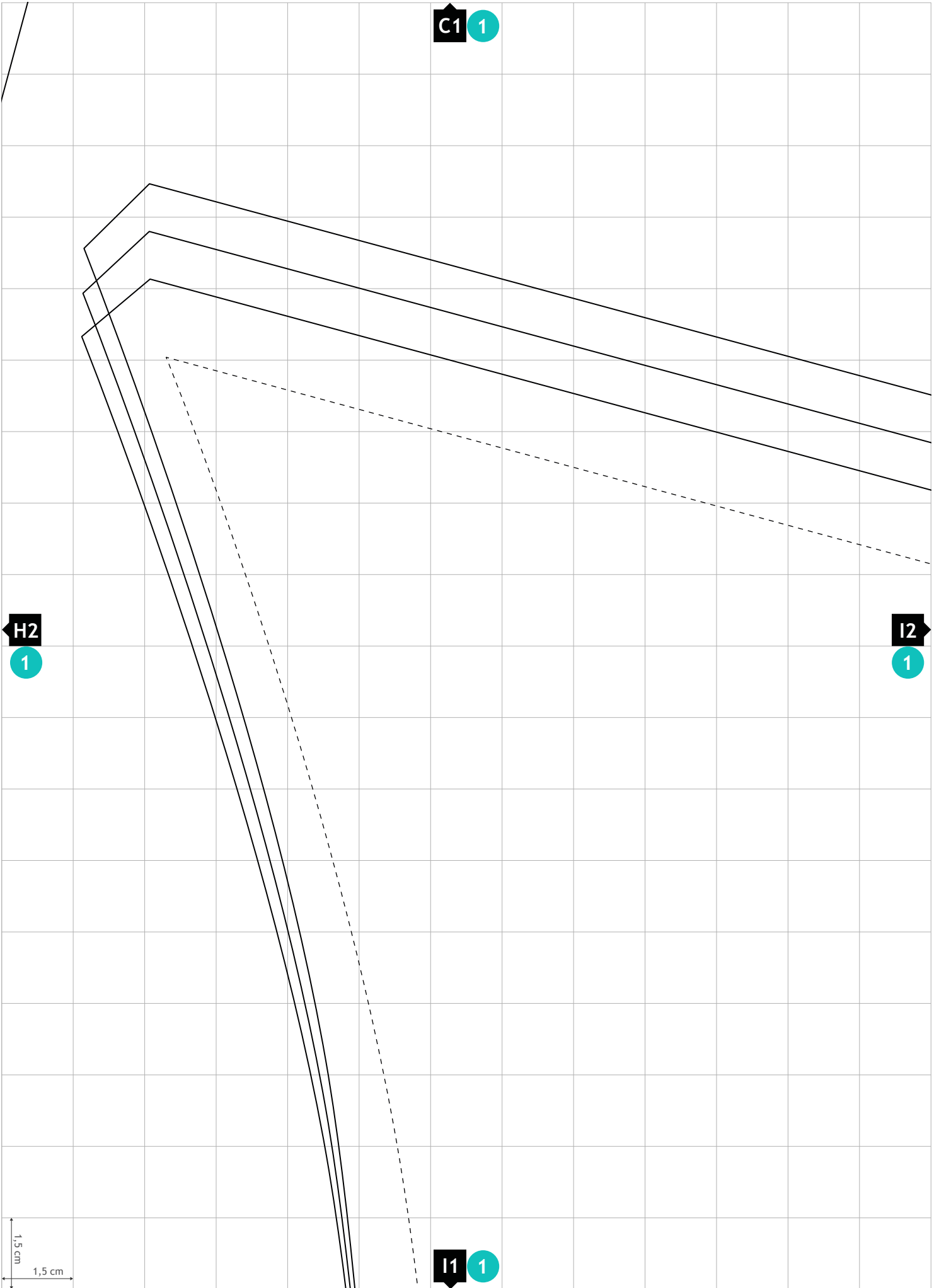
H2
1



H1 1



Größenkontrolle



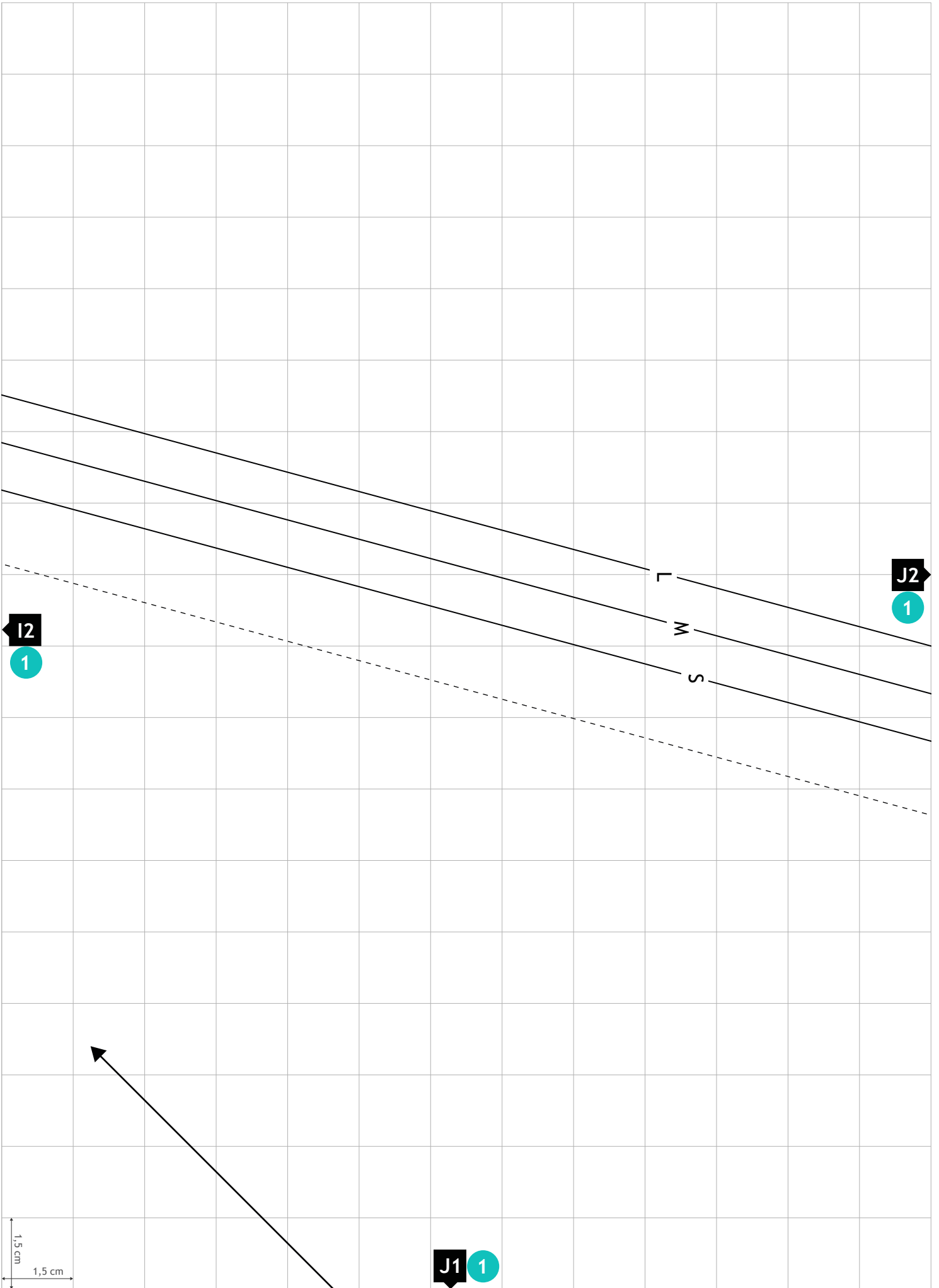
C1 1

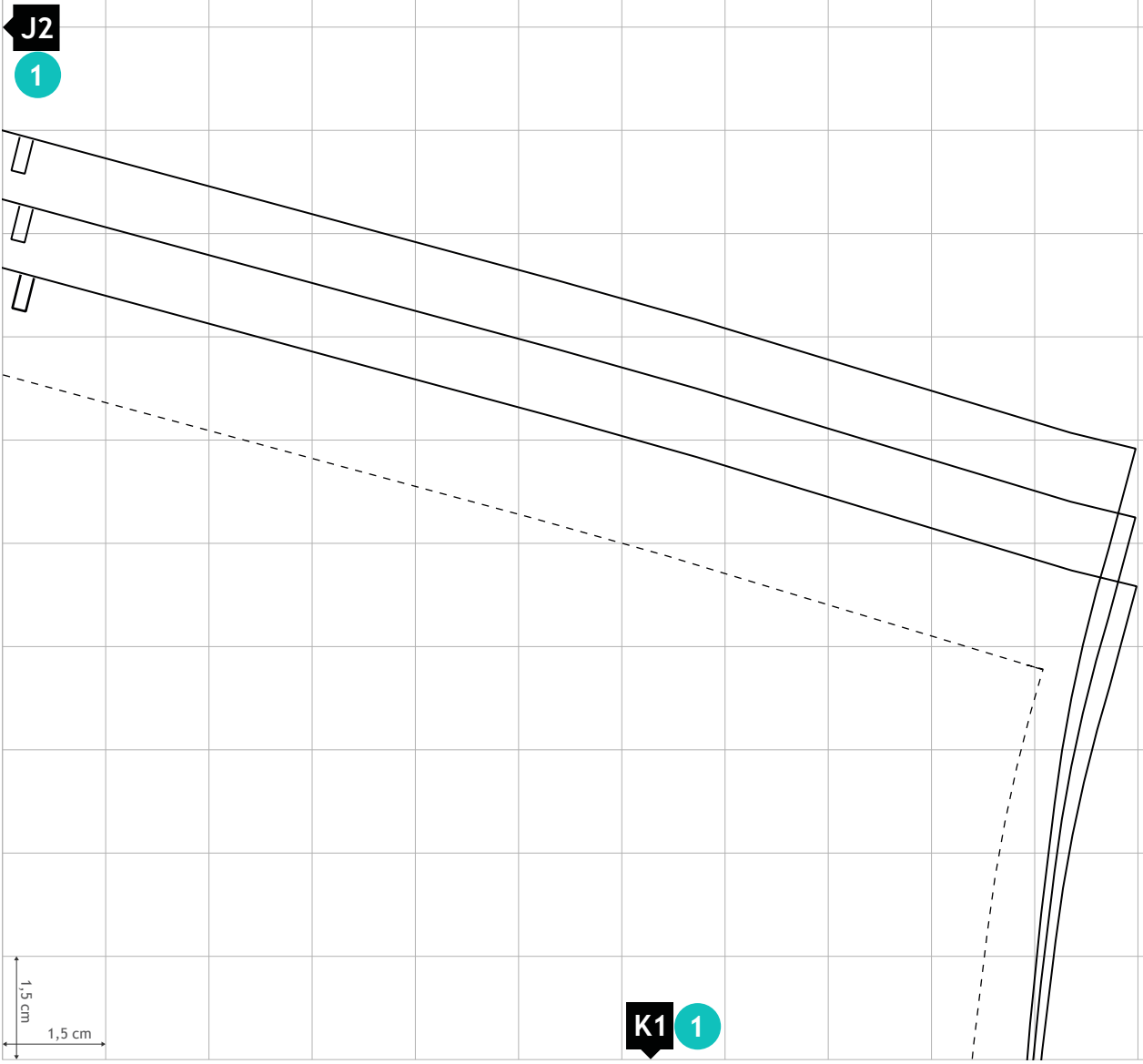
H2 1

I2 1

I1 1

1,5 cm
1,5 cm



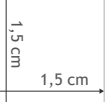


J2

1

K1

1

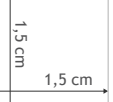
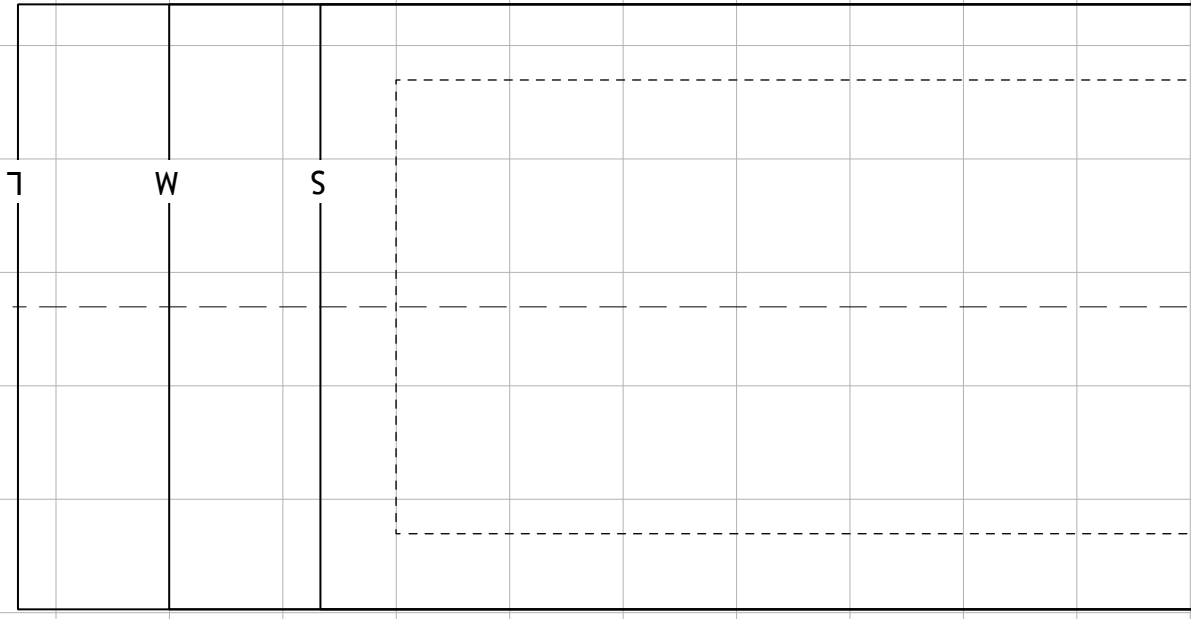


Größenkontrolle

G1 1

Voku-HiLa Rock
Hinterrock
1x im Stoffbruch zuschneiden
INKLUSIVE
Nahzugaben: Bund 1 cm, Seite 1,5 cm
Saumzugabe: 1,5 cm

M2 1

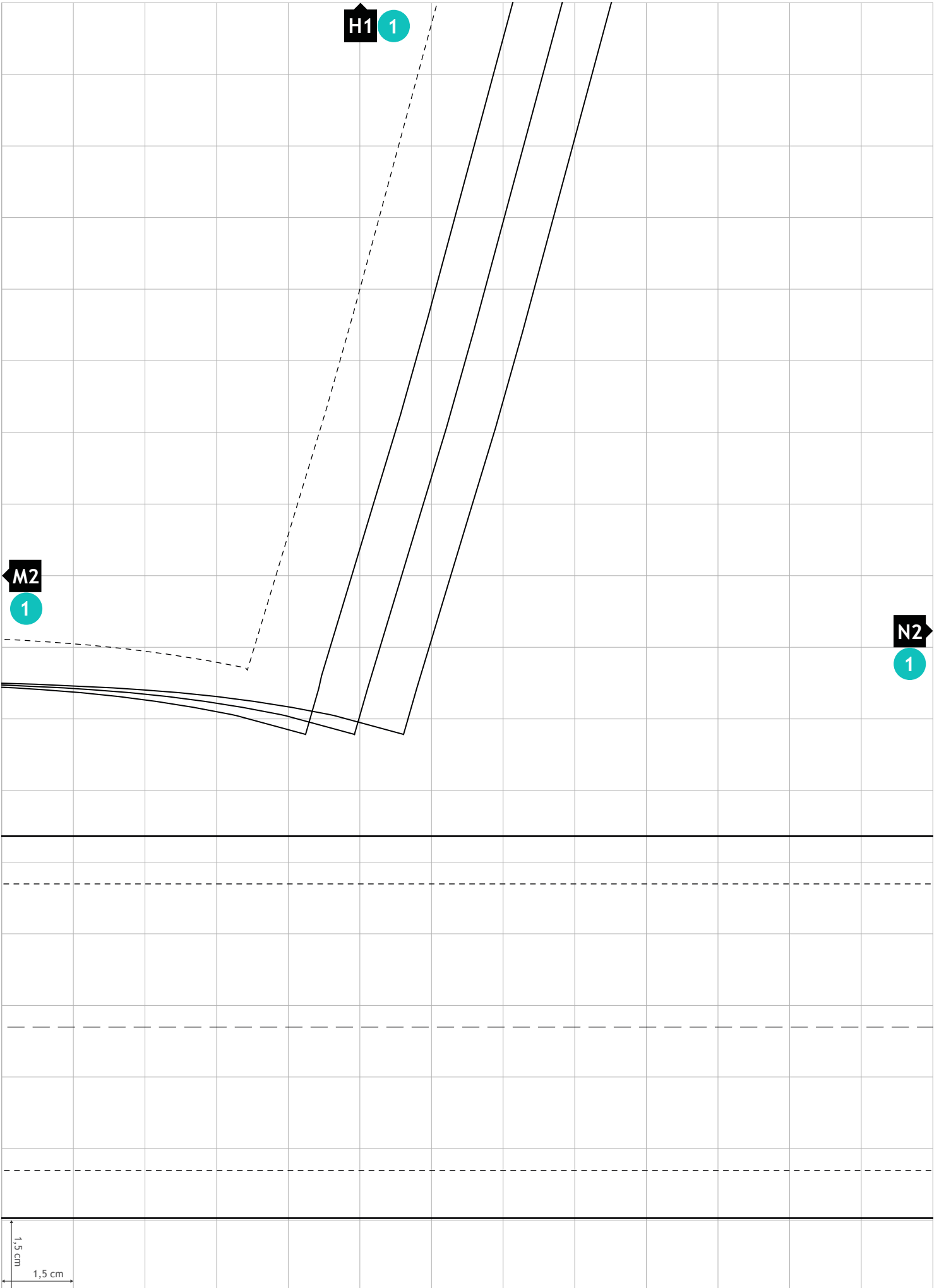


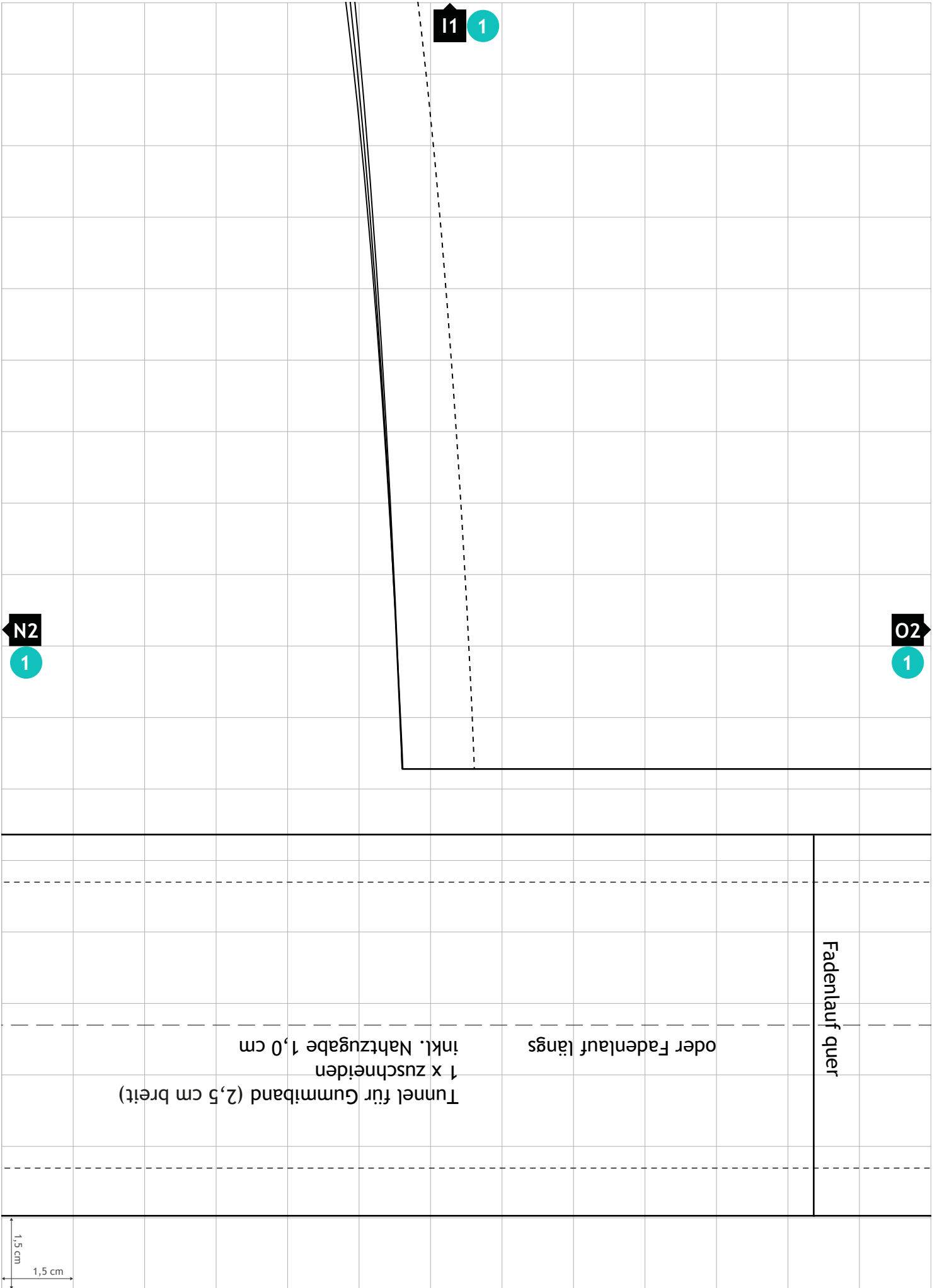
Größenkontrolle

H1 1

M2 1

N2 1





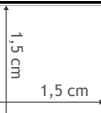
I1 1

N2 1

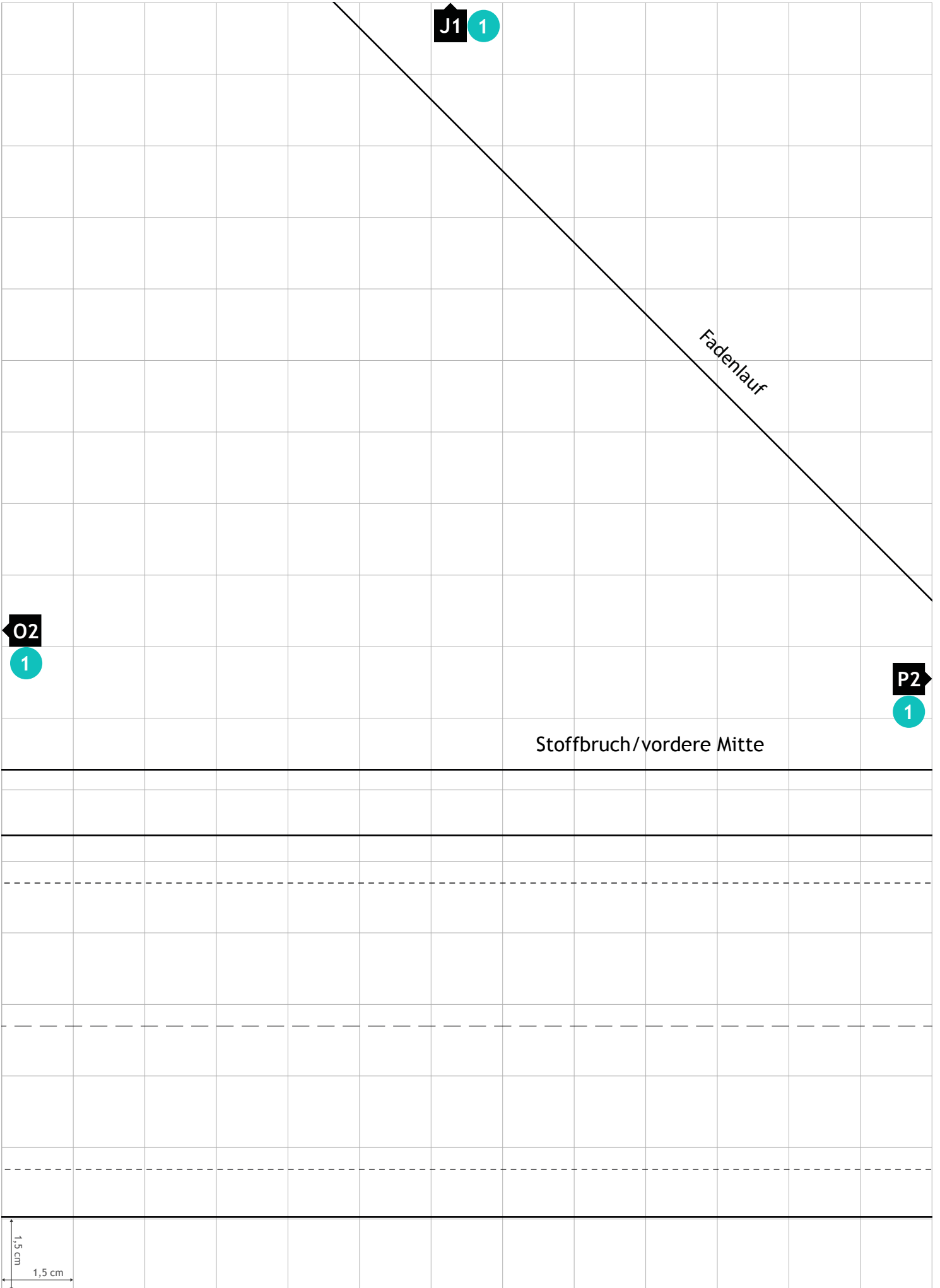
O2 1

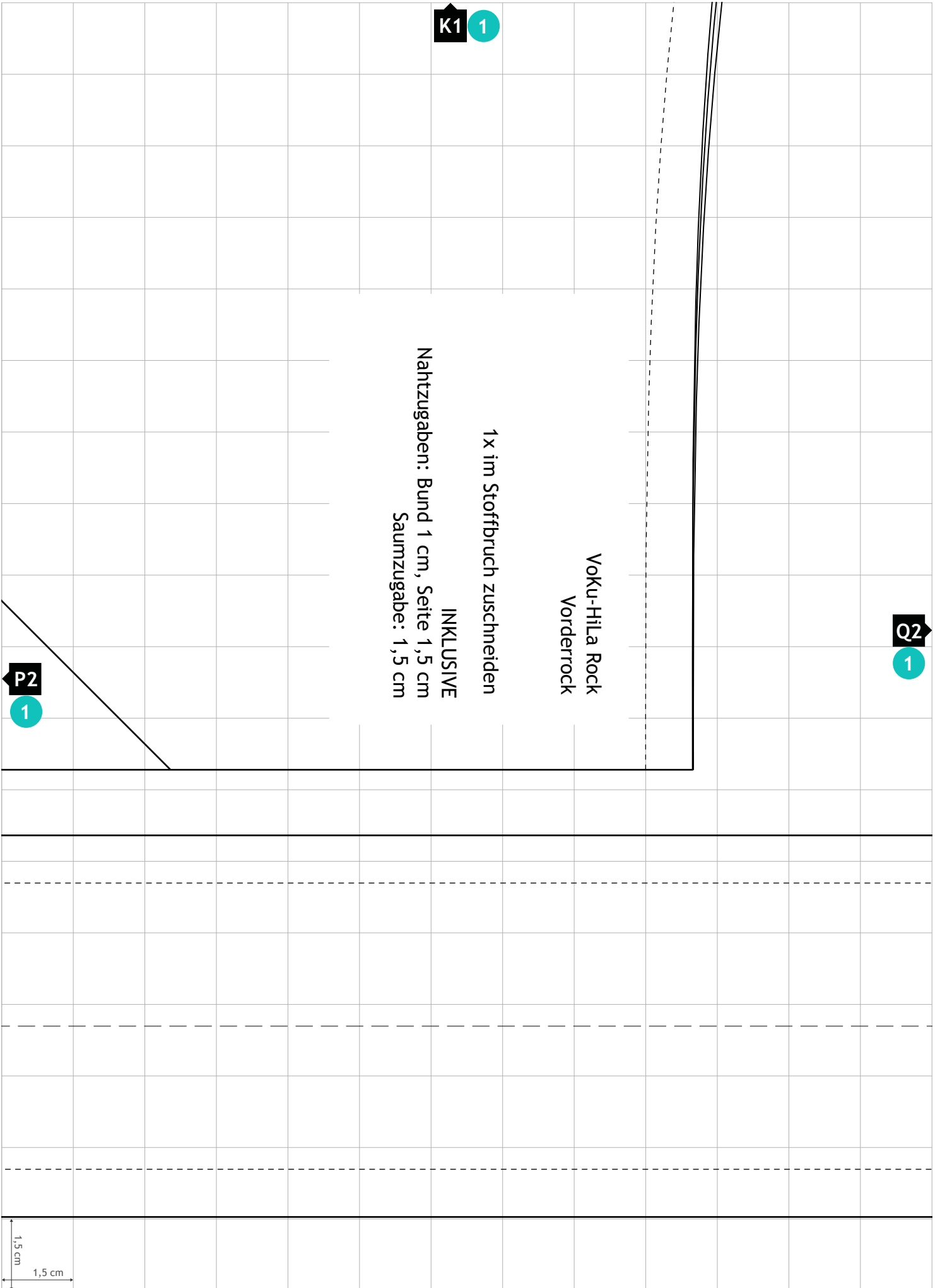
Tunnel für Gummiband (2,5 cm breit)
1 x zuschneiden inkl. Nahtzugabe 1,0 cm
oder Fadenlauf längs

Fadenlauf quer



Größenkontrolle





Q2

1

