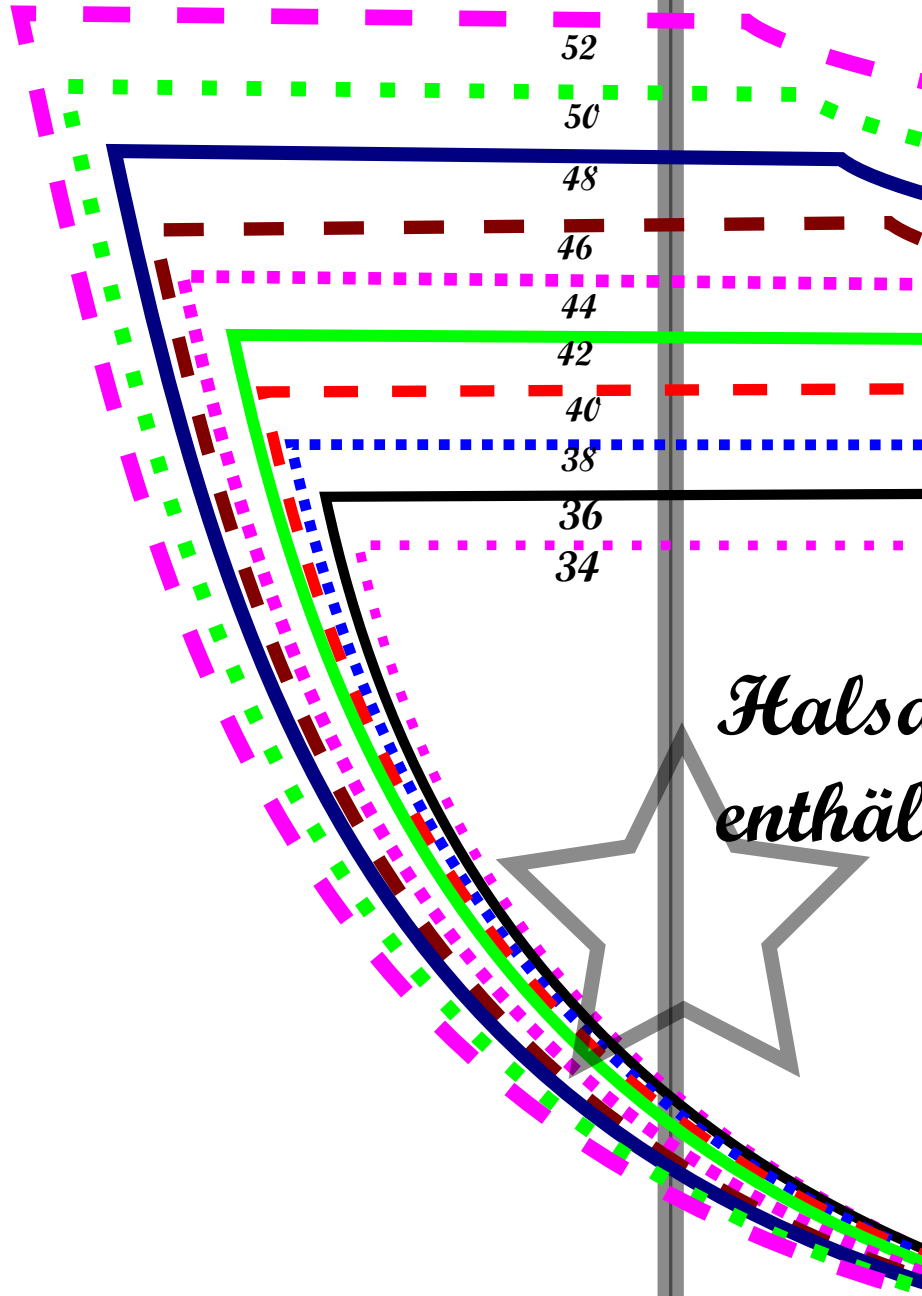


1

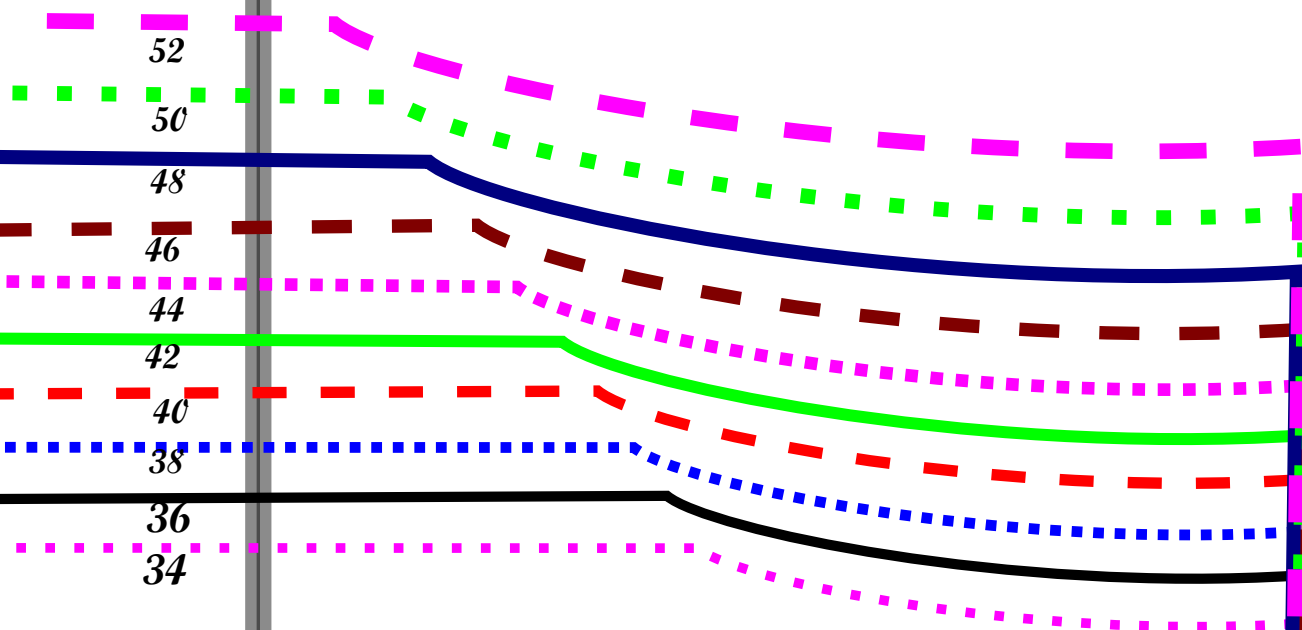
2

Kontrollquadrat
5cm x
5cm



6

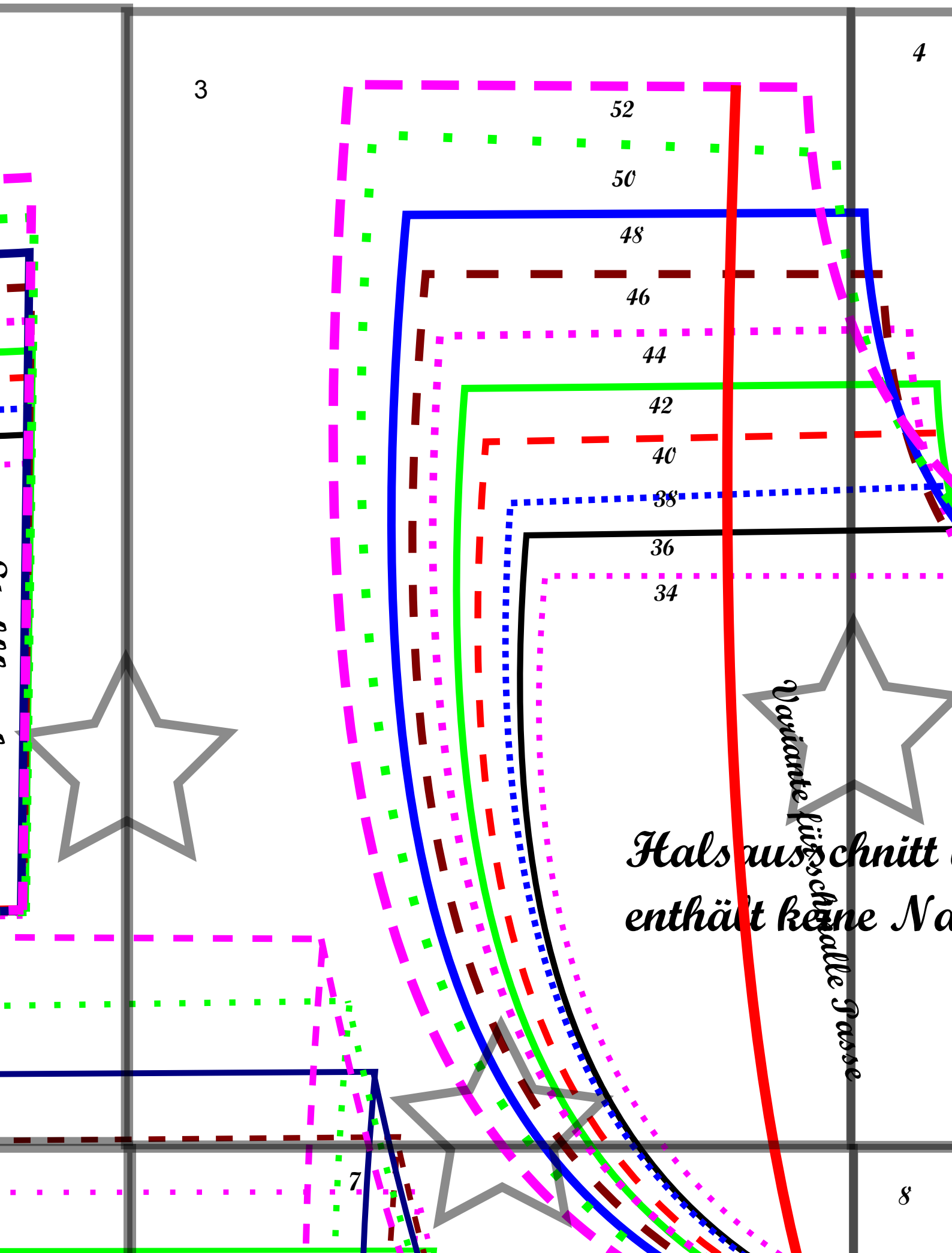
2



*Halsansatz hinten
enthält keine Nahtzugabe*

Stoffleuch

6



3

4

52

50

48

46

44

42

40

38

36

34

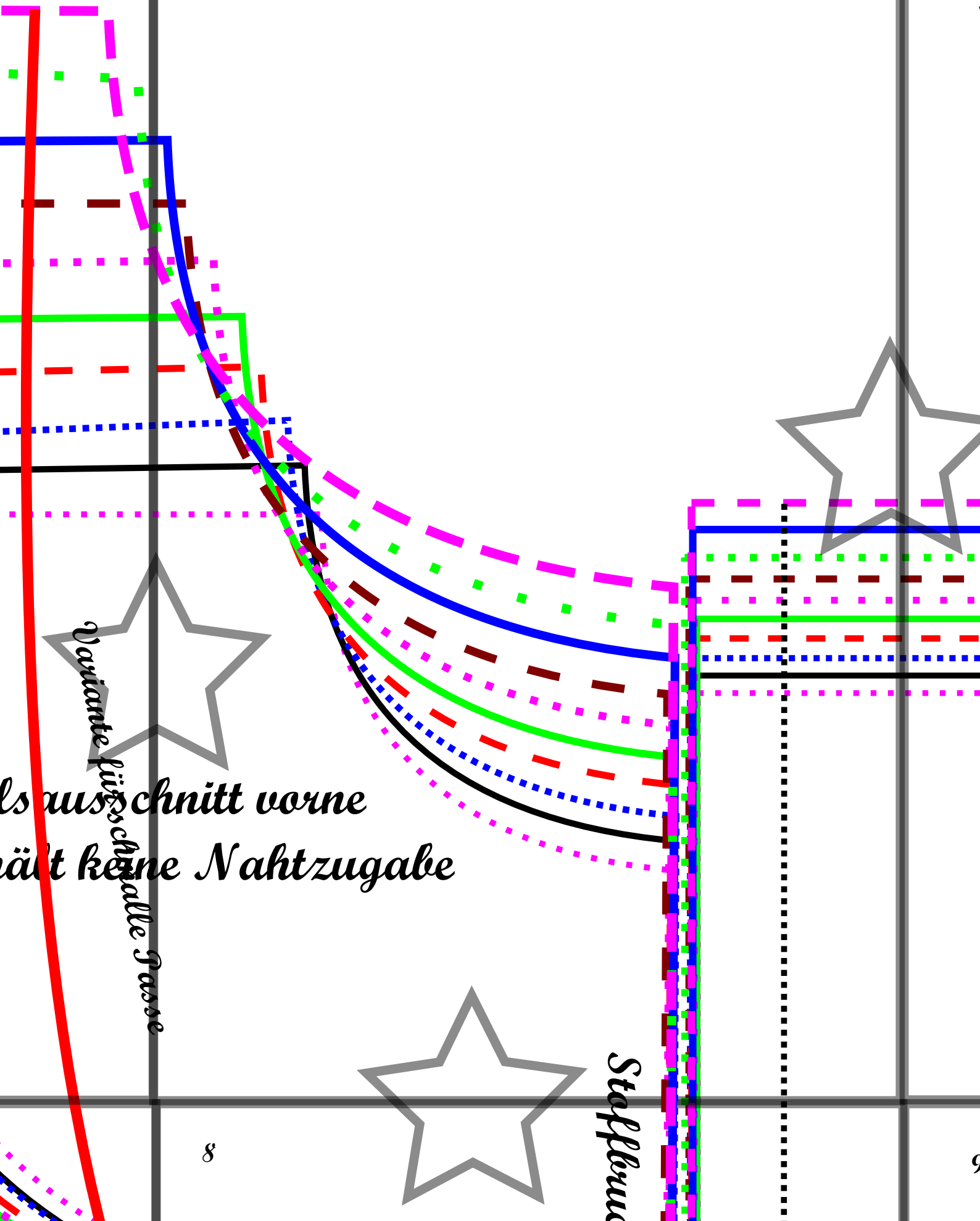
7

8

Halsausschnitt
enthält keine Na

Variante für
schmale
Passe

4



Variante

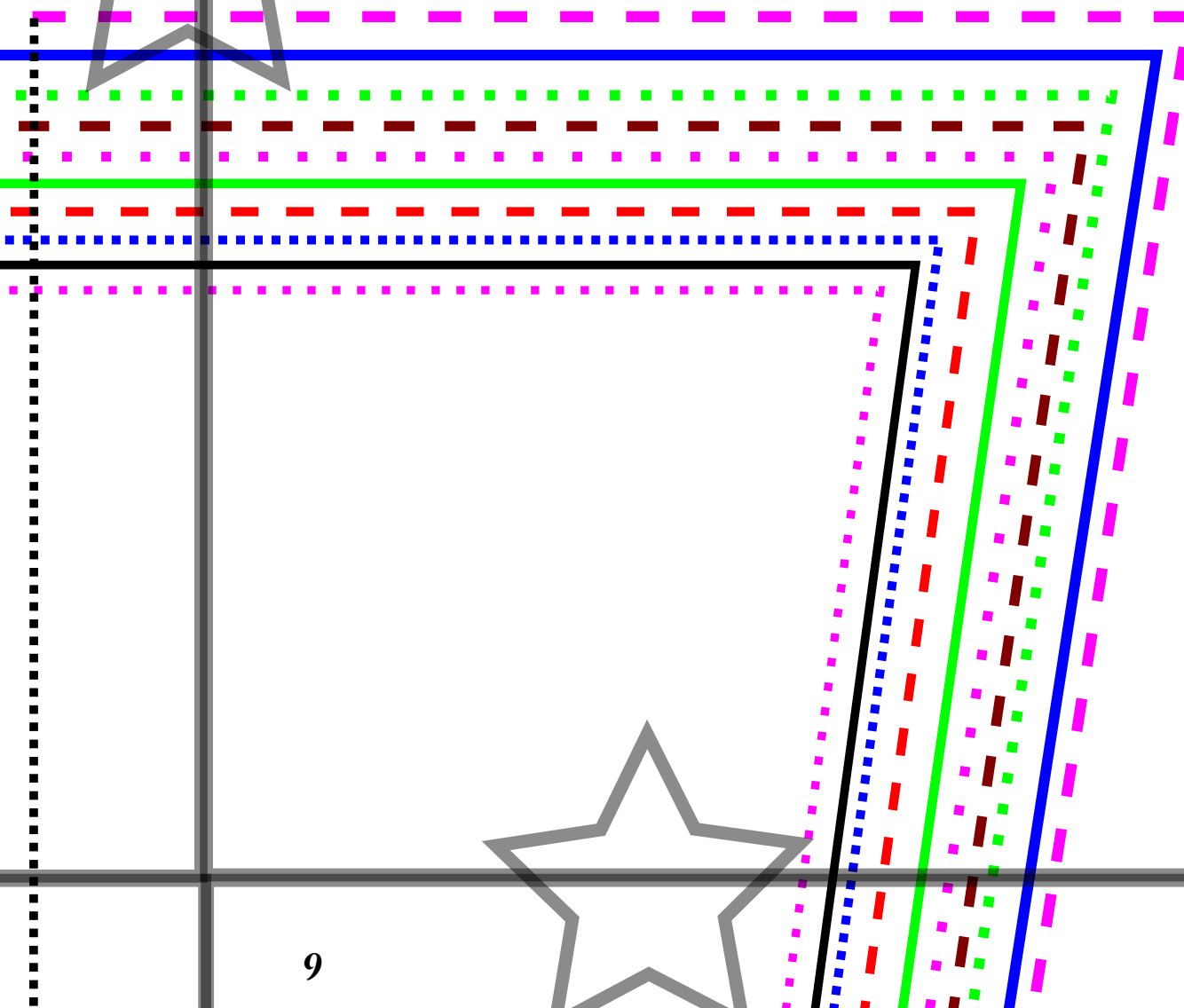
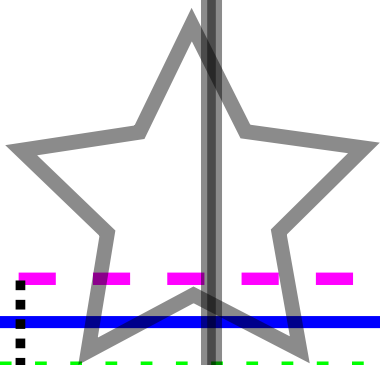
*als ausschnitt vorne
hält keine Nahtzugabe*

Stoffbau

8

9

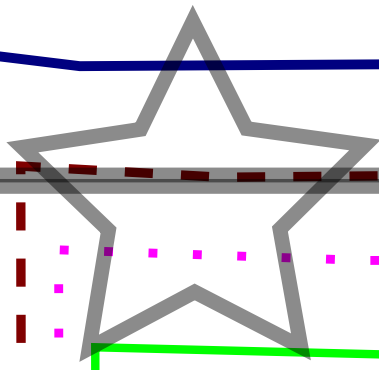
5



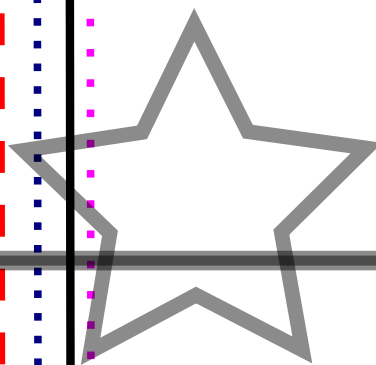
9



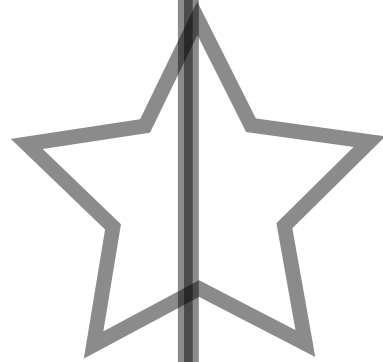
6

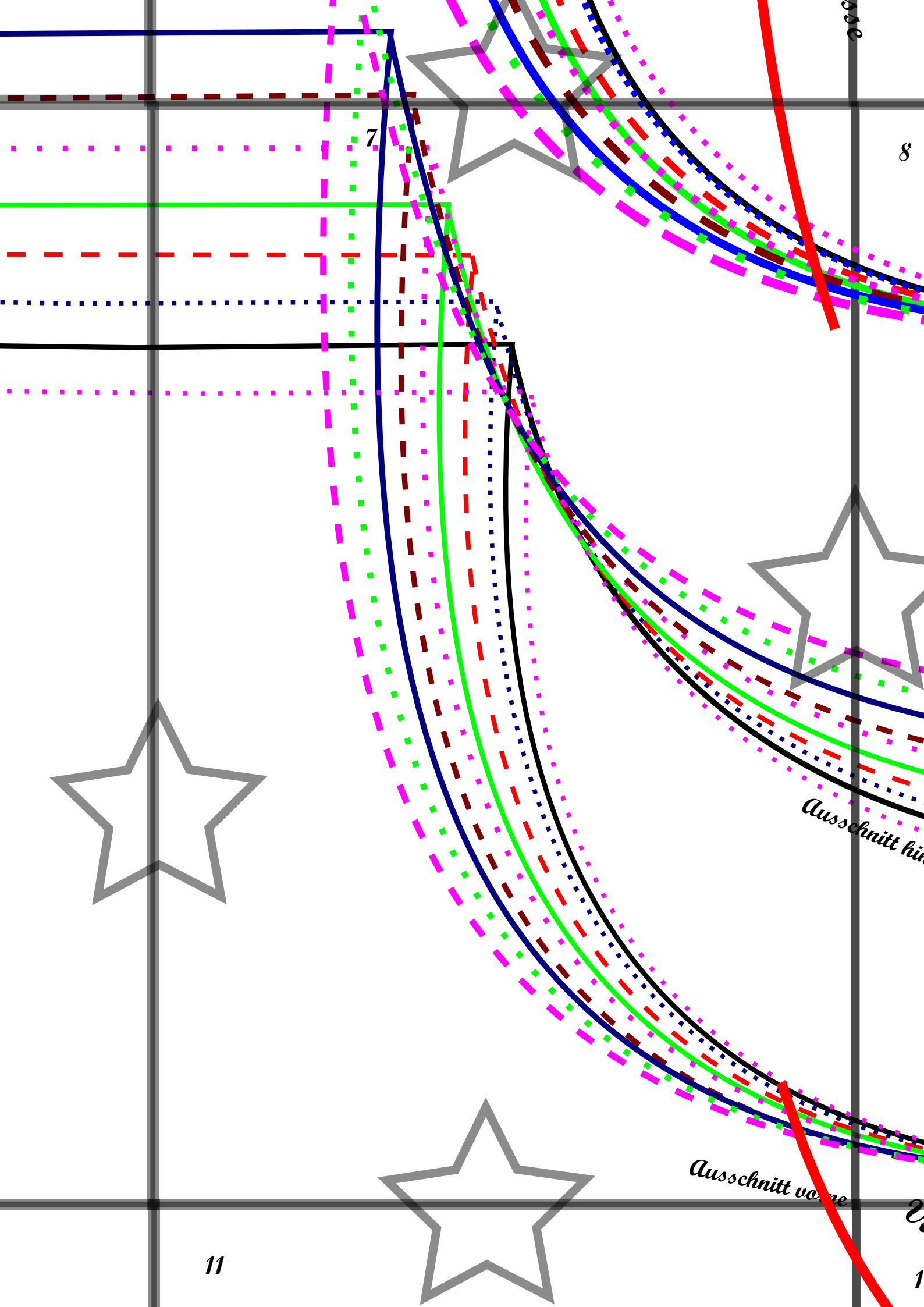


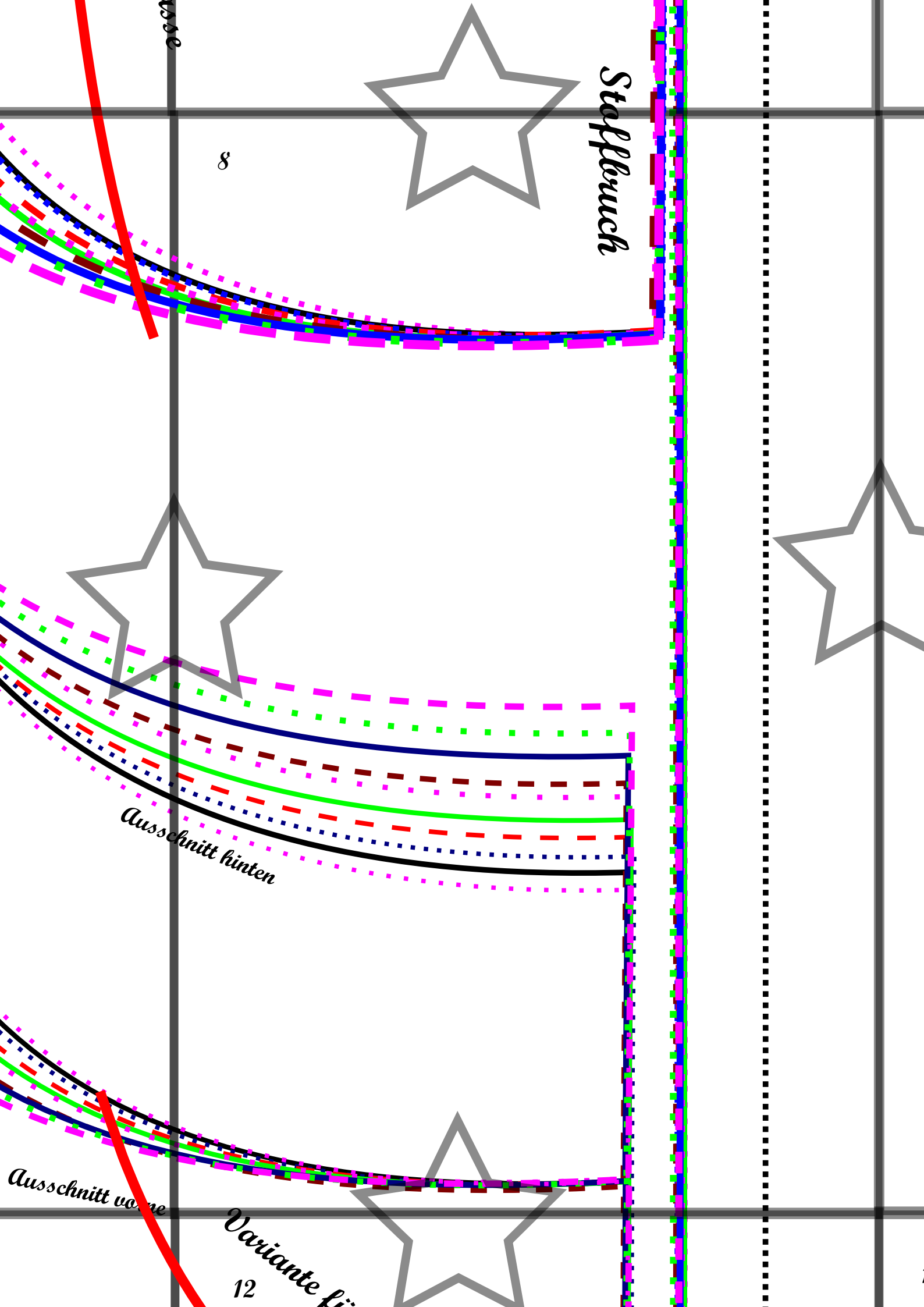
10



11







8

Stapflerwuch

Ausschnitt hinten

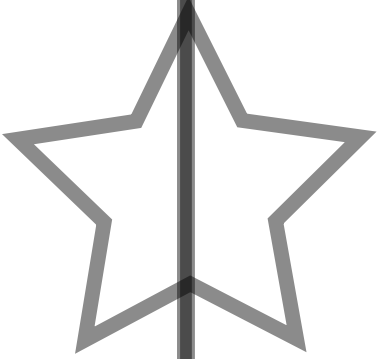
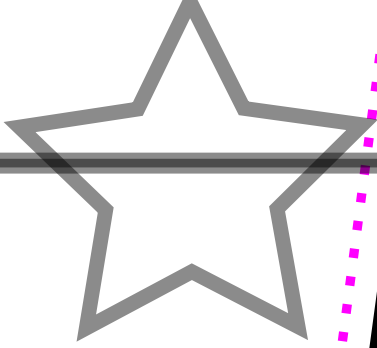
Ausschnitt vorne

Variante für

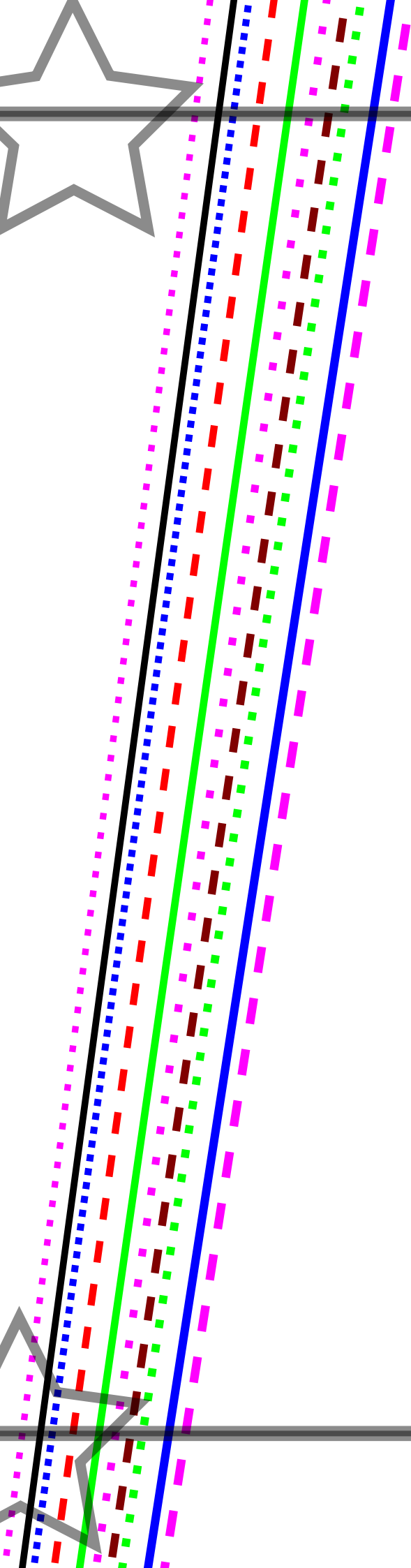
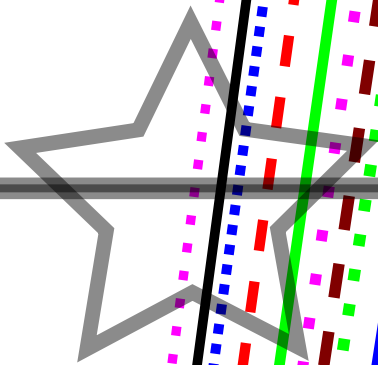
12

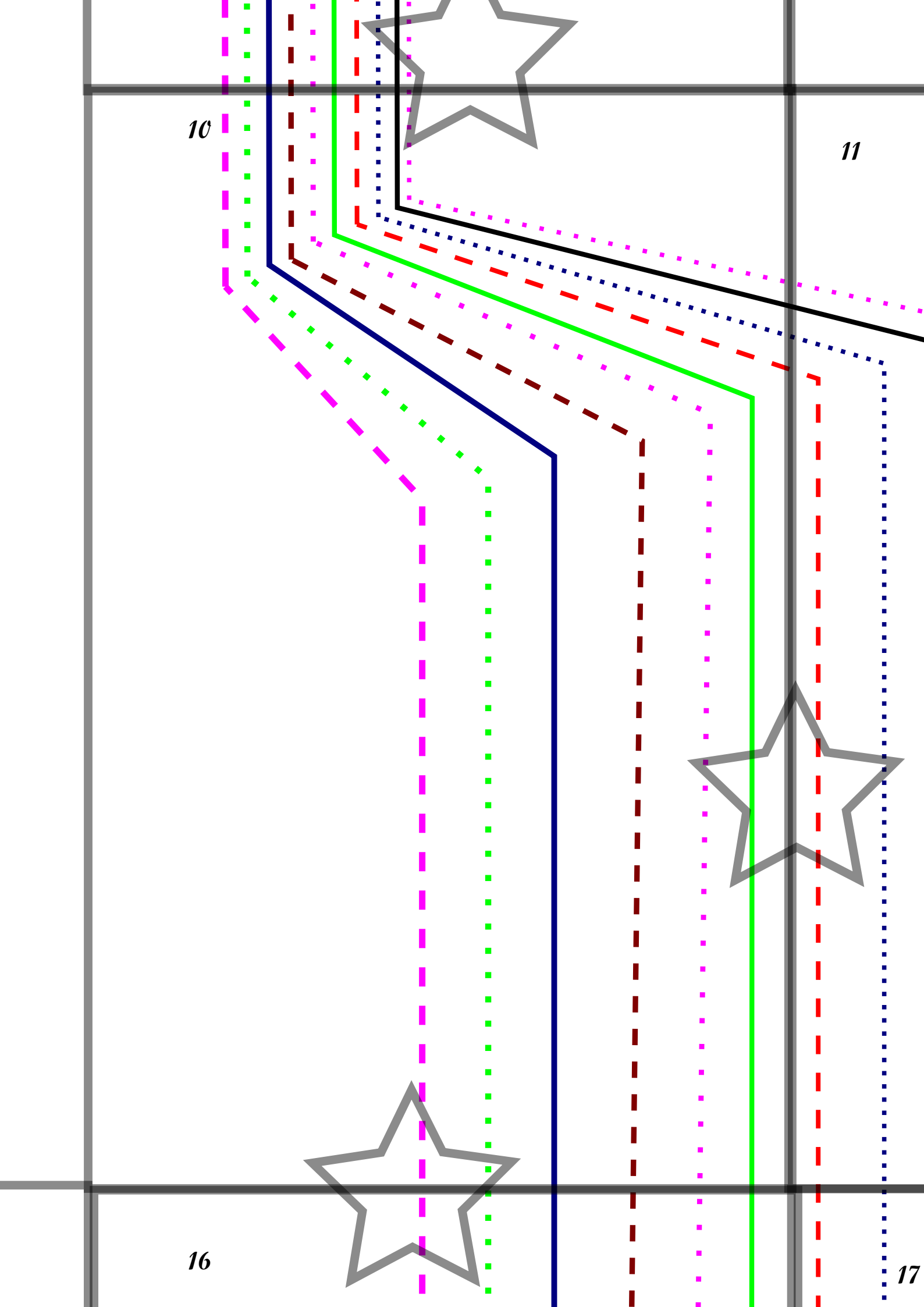
vorne

9



13





10

11

16

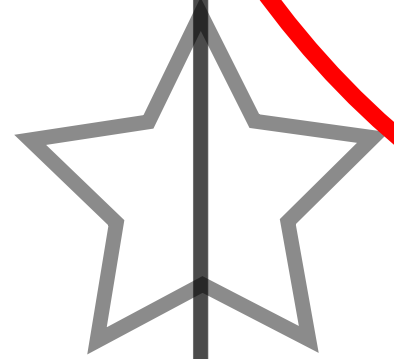
17

Ausschnitt vorne

Varian

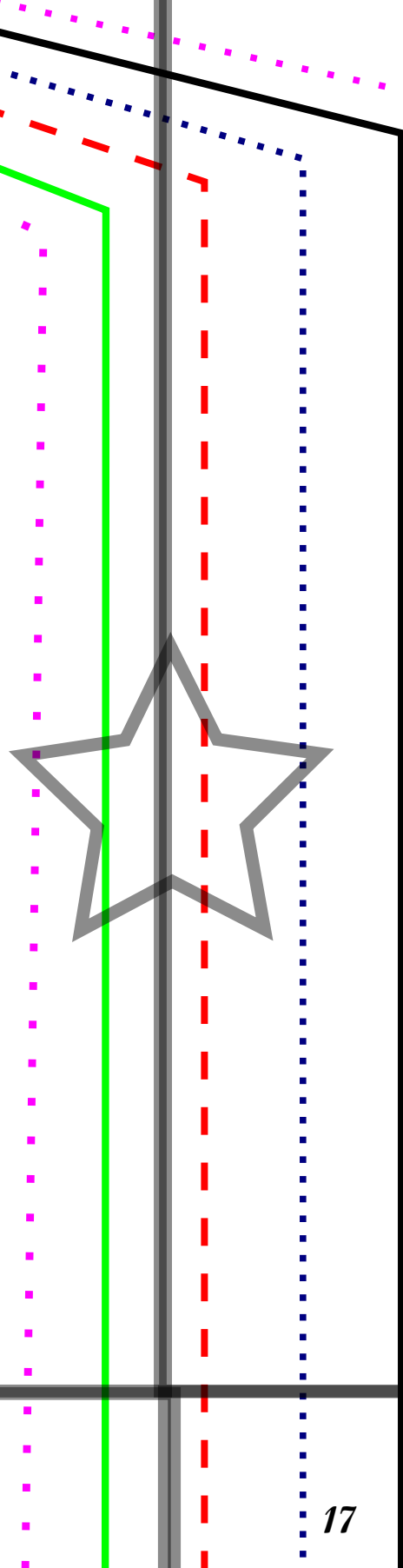
11

12

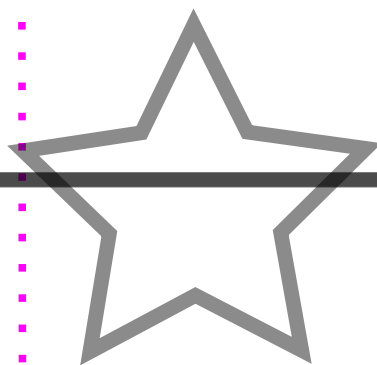


Mama Baldur

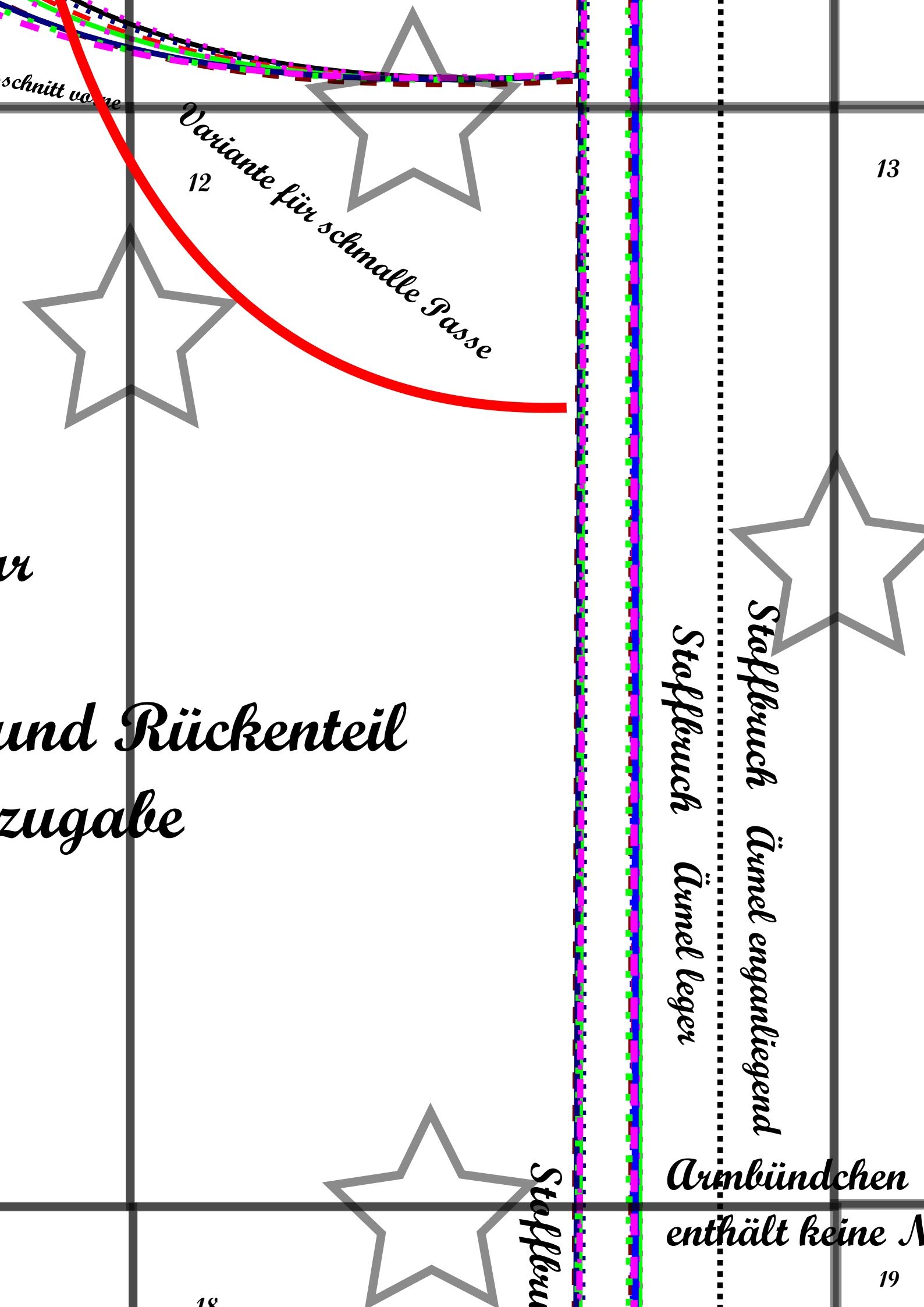
*Vorderteil und Rücken
ohne Nahtzugabe*



17



18



schnitt von

Variante für schmale Passe
12

13

ur

und Rückenteil
zugabe



Stoffbruch
Stoffbruch
Stoffbruch
Ärmel enganliegend
Ärmel locker



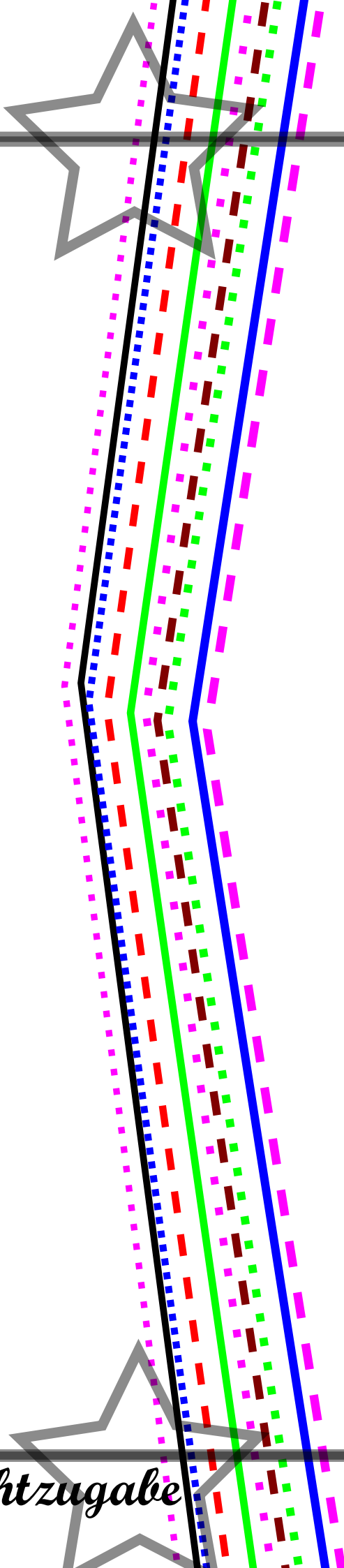
Stoffbruch

Ärmelbündchen
enthält keine N

18

19

13



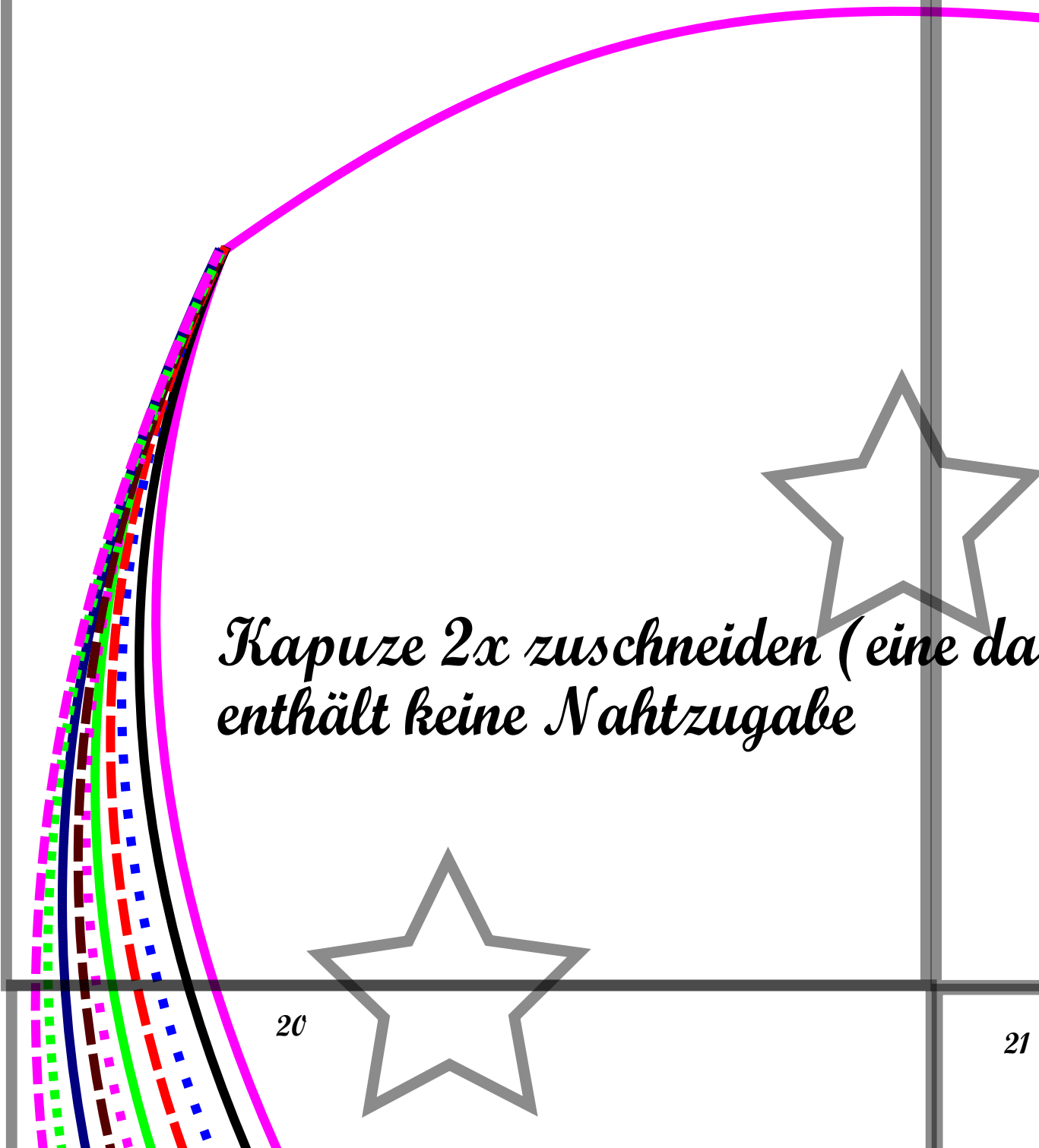
Stoffwuch *Ärmel enganliegend*

Stoffwuch *Ärmel locker*

Ärmbündchen

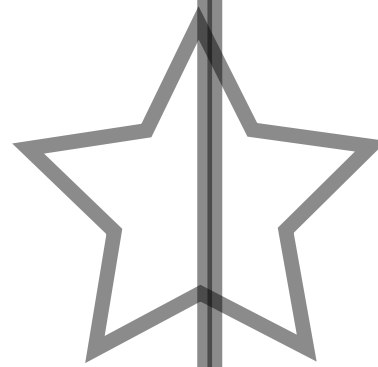
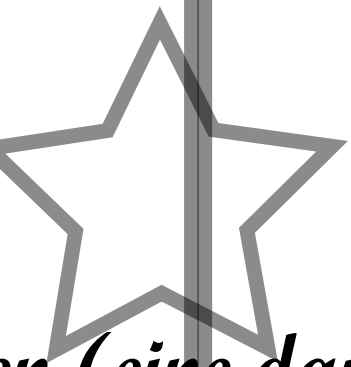
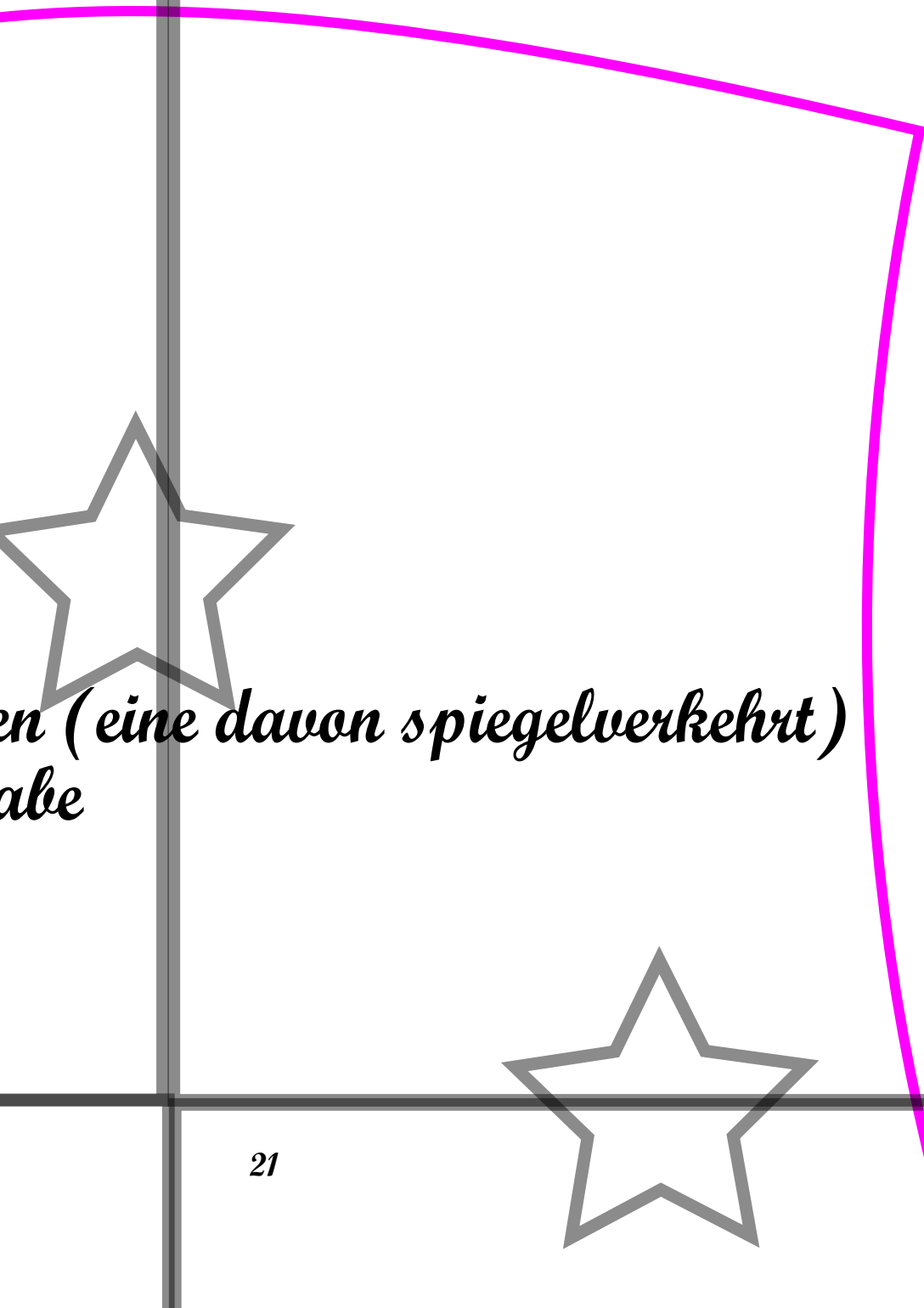
enthält keine Nahtzugabe

19



*Kapuze 2x zuschneiden (eine da
enthält keine Nahtzugabe*

15

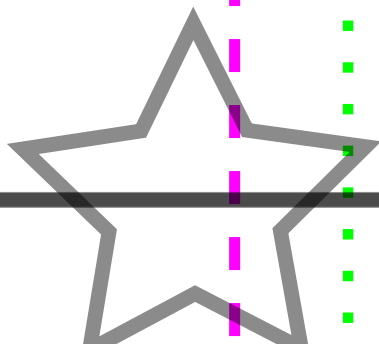
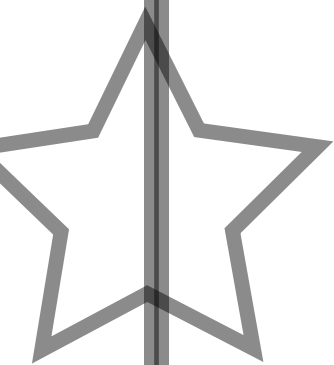
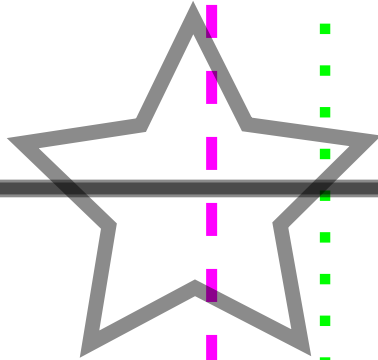


*en (eine davon spiegelverkehrt)
abe*



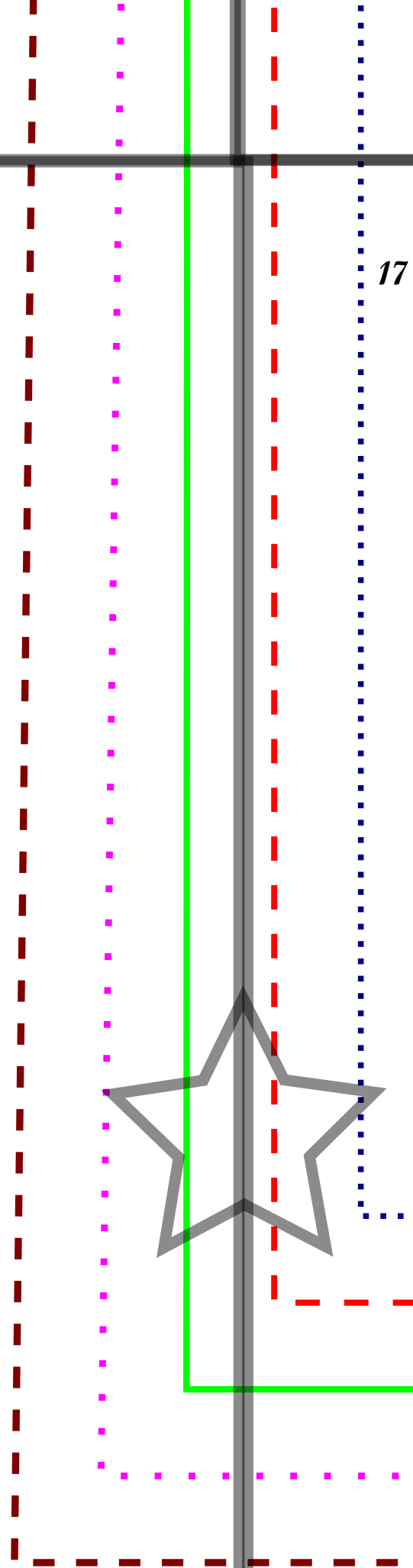
21

16

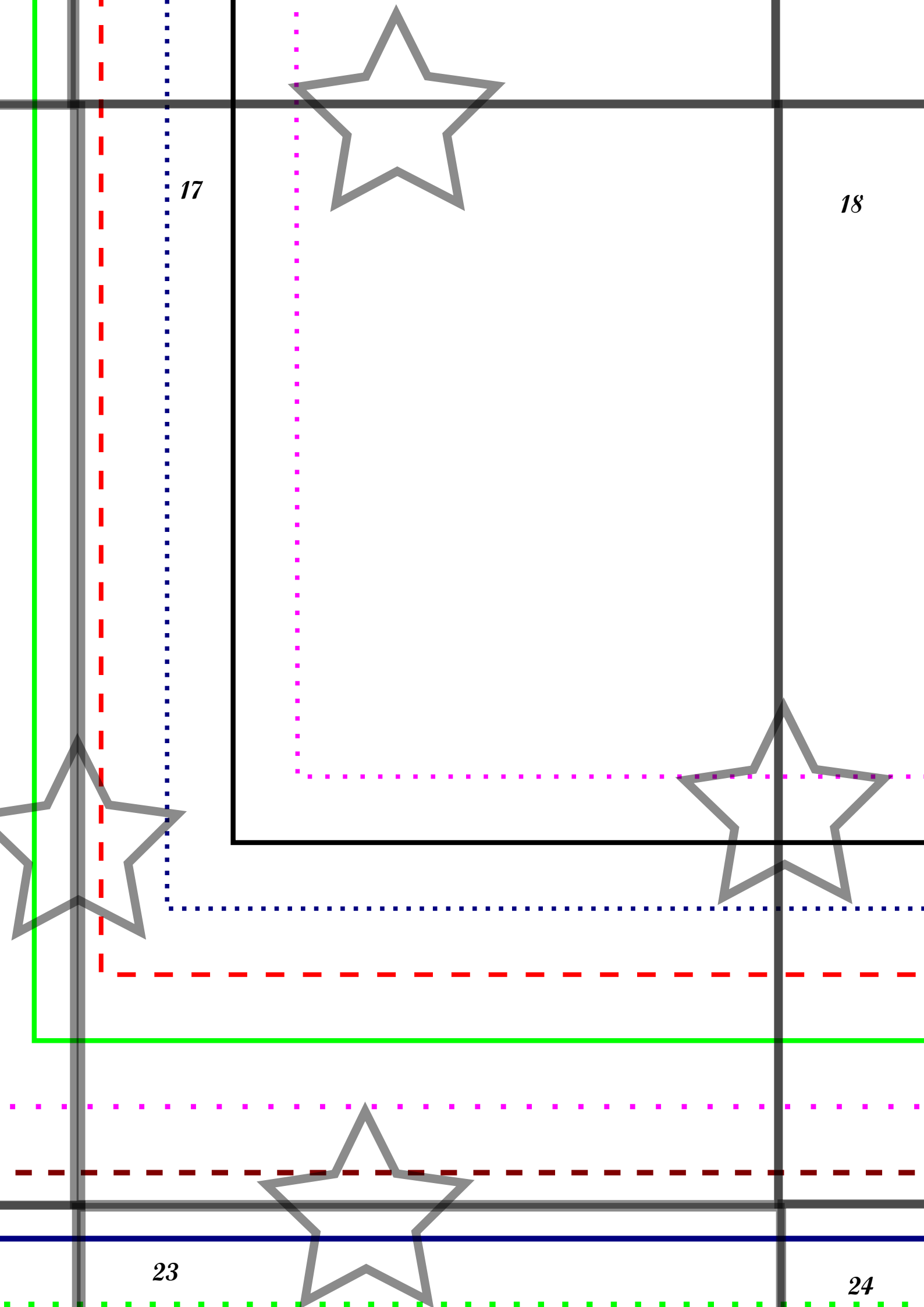


22

17



23

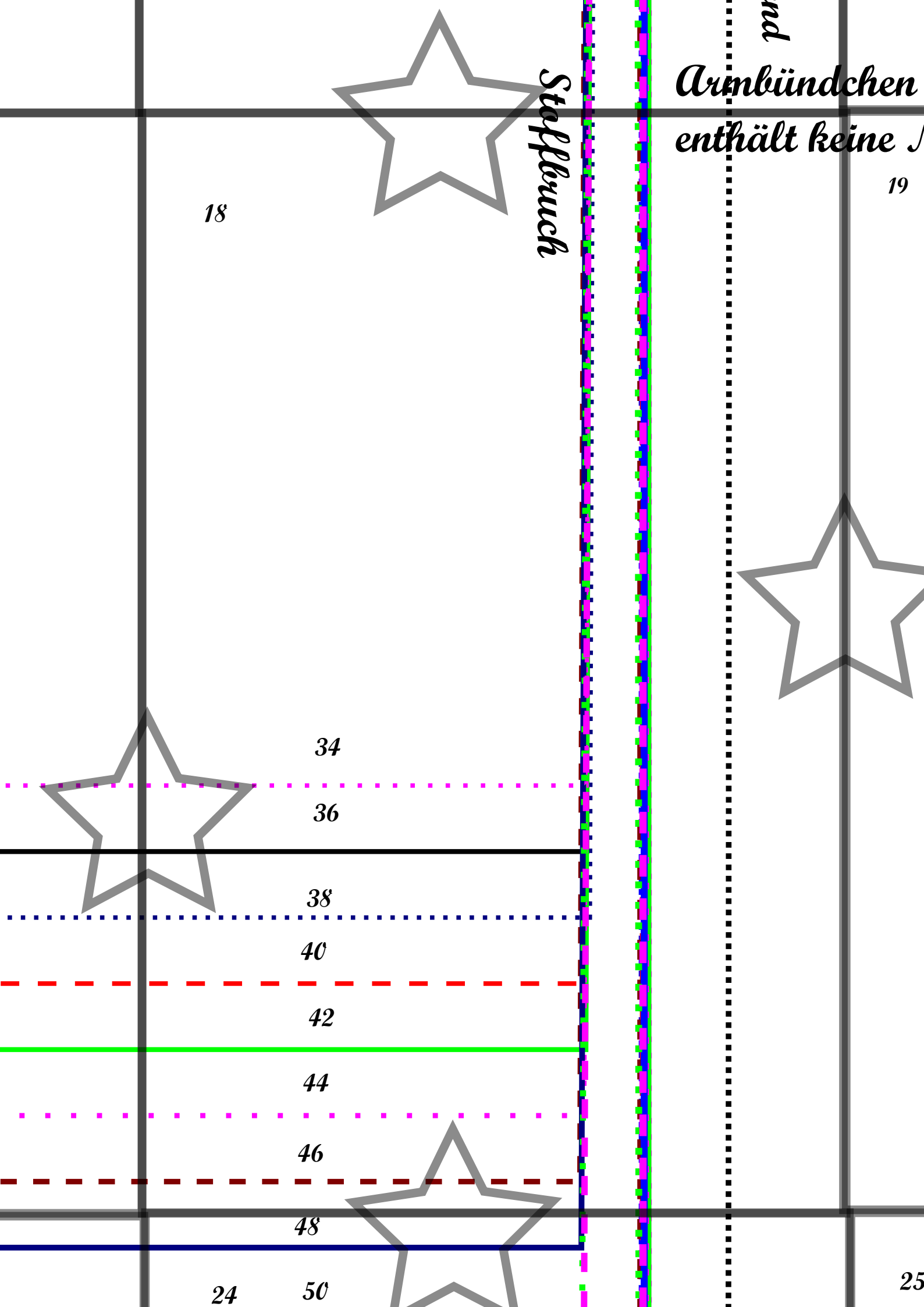


17

18

23

24



Stafflebuch

*Armbündchen
enthält keine J*

nd

18

19

34

36

38

40

42

44

46

48

24

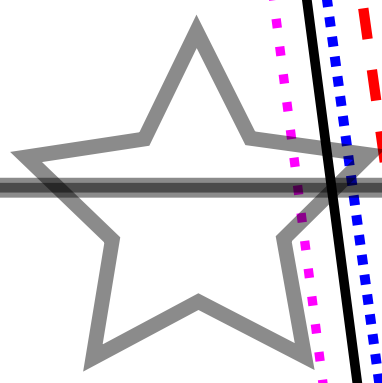
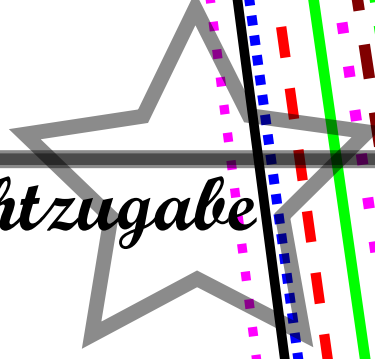
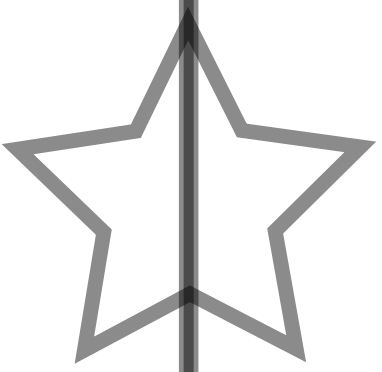
50

25

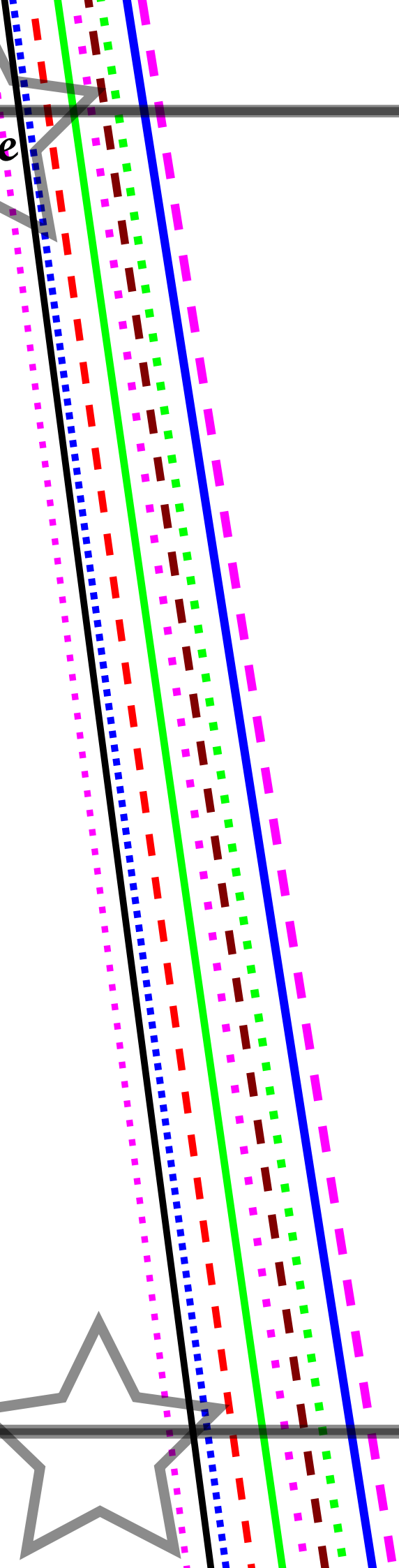
p
n**bü**ndchen

hält keine Nahtzugabe

19

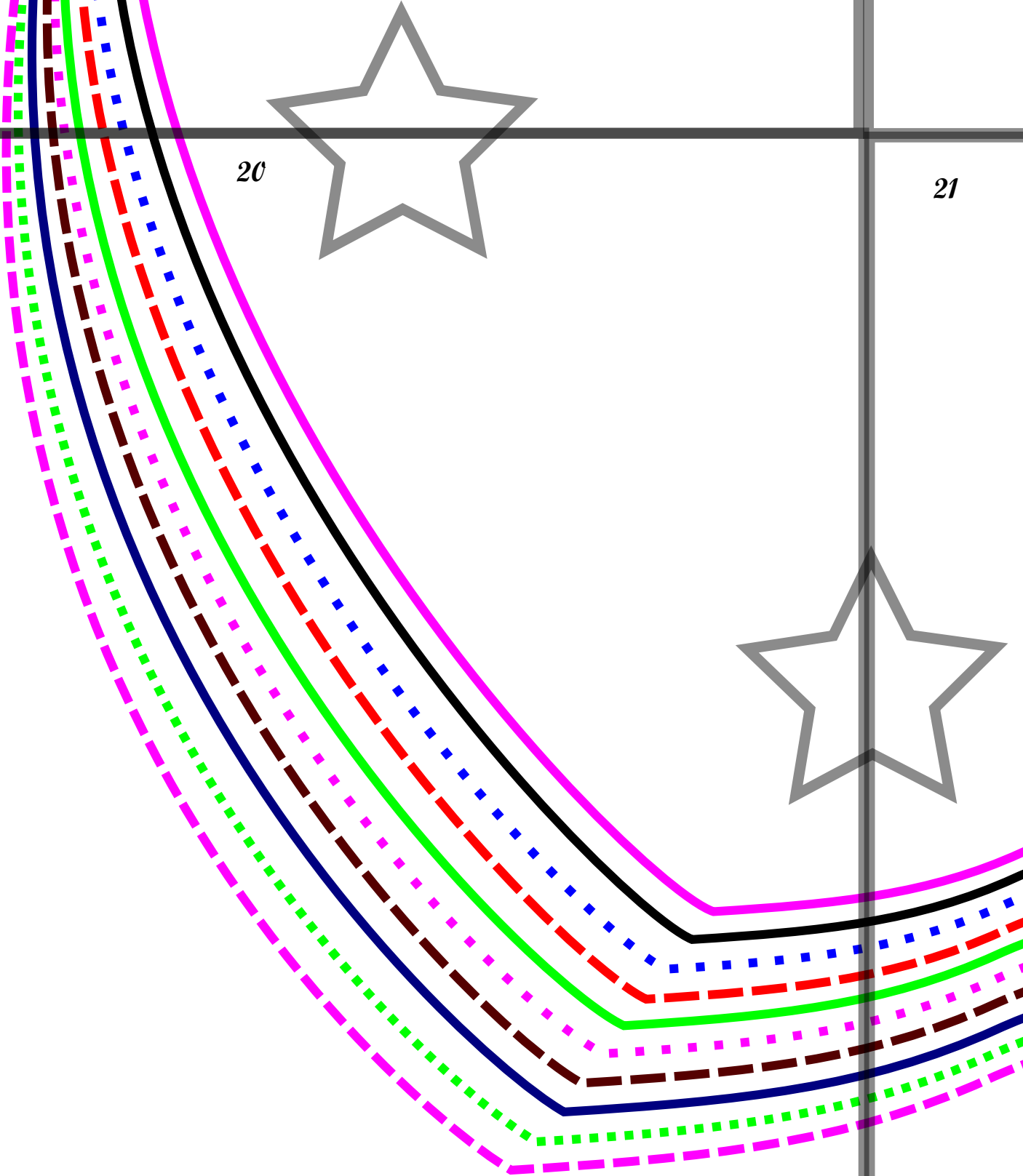
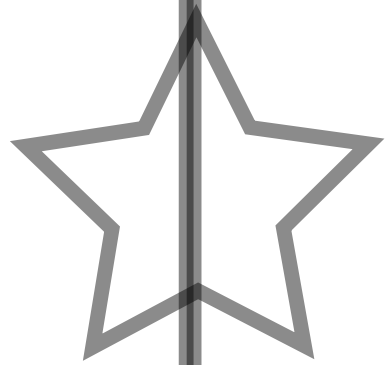
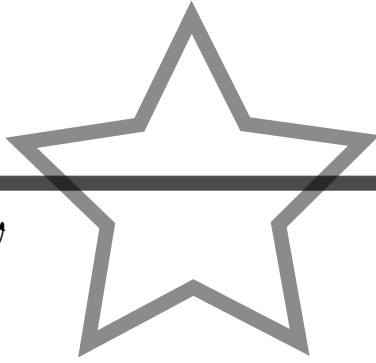


25

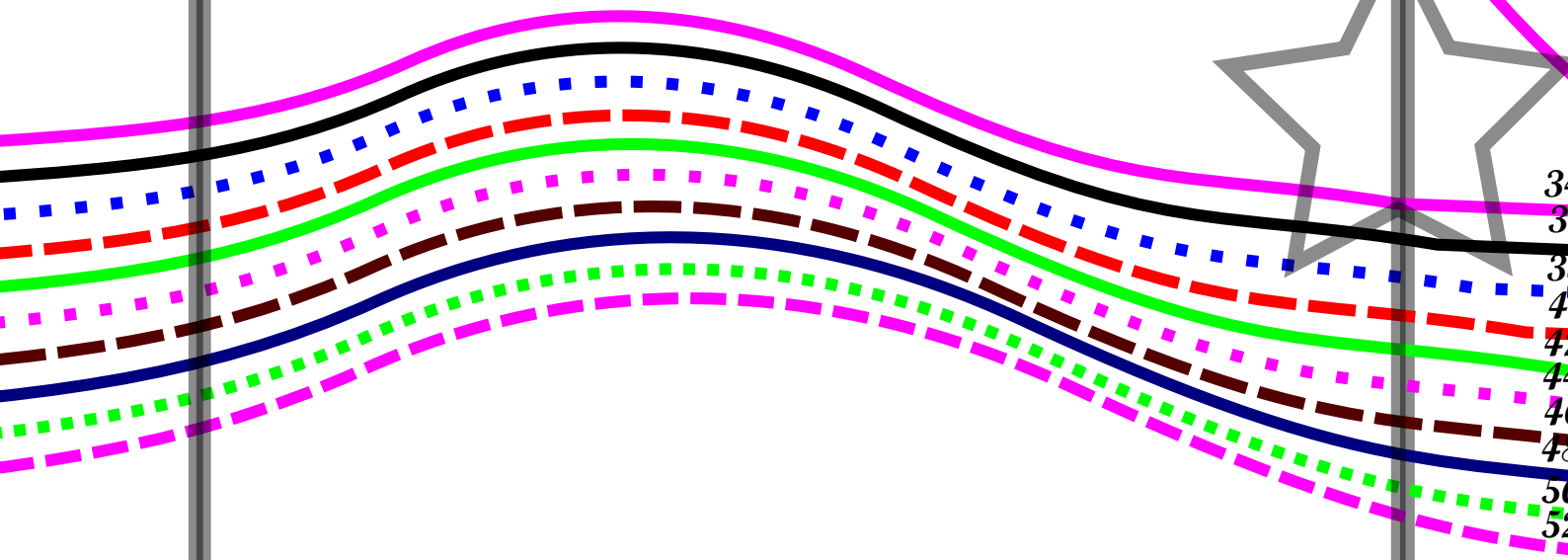
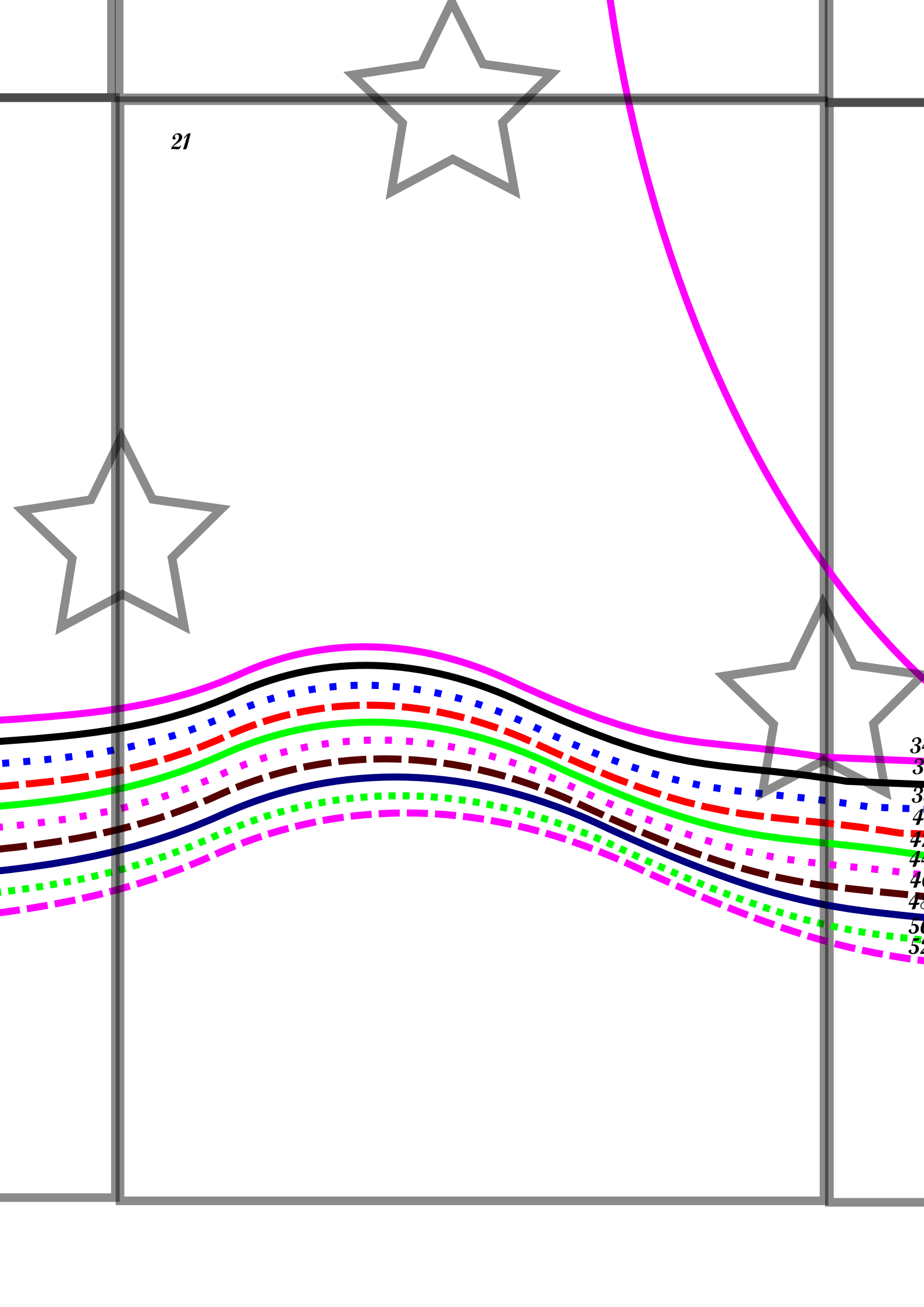
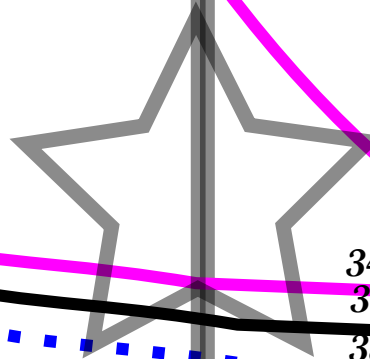
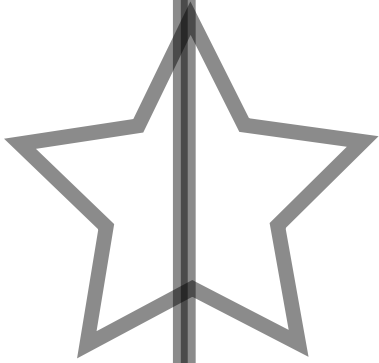
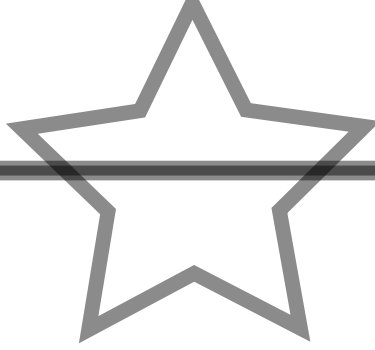


20

21

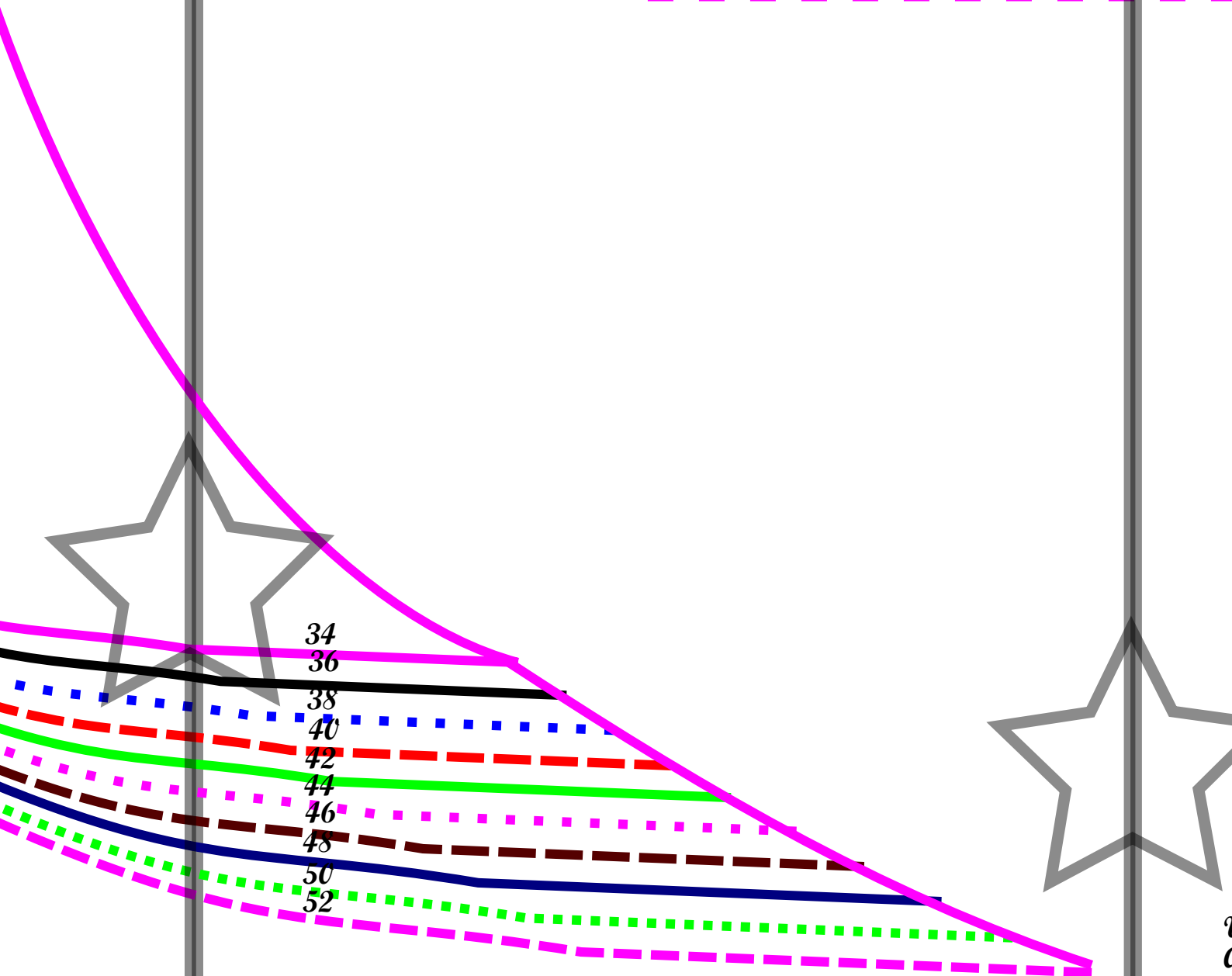
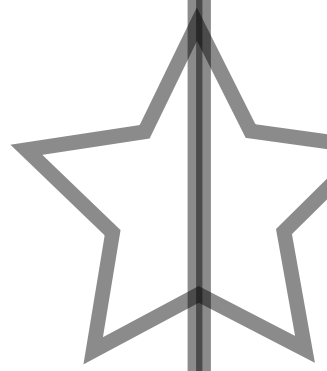
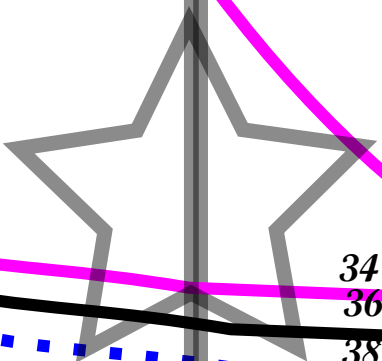
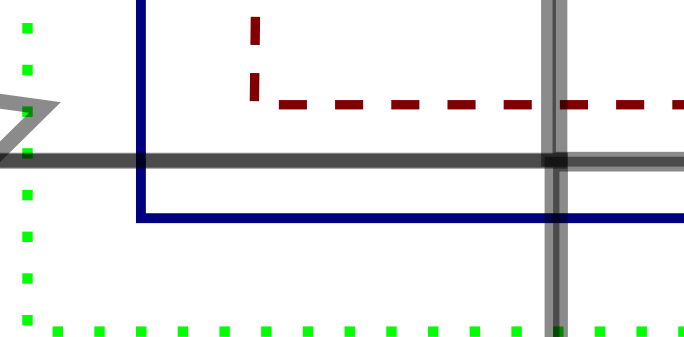
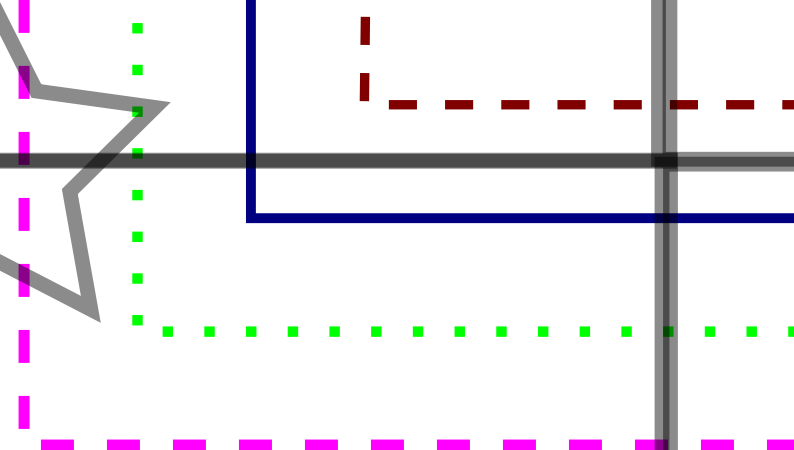
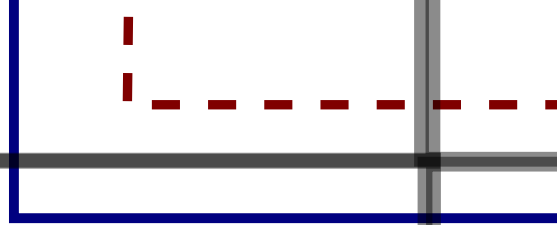
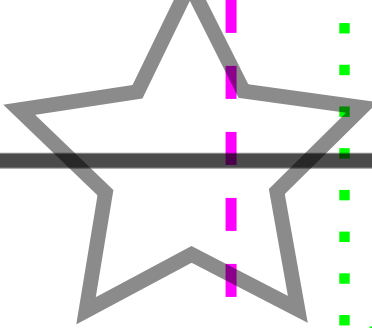


21



3
3
3
4
4
4
4
4
5
5

22

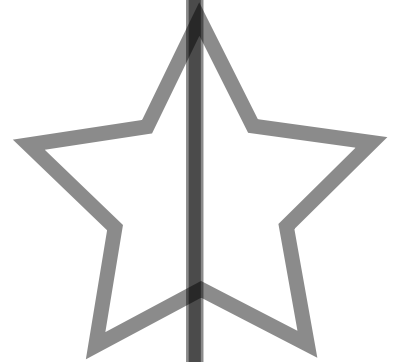
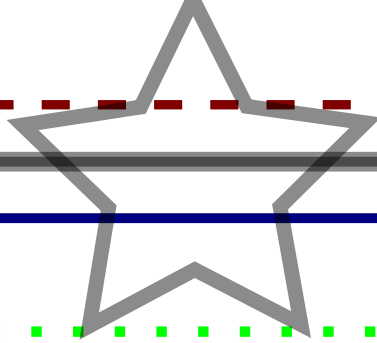


34
36
38
40
42
44
46
48
50
52

2
0
2
0

23

24



*Urheberin des Schnittmusters und der dazugehörigen Fotoanleitung ist
Annika Wagner, Oberrain 350, 5063 Wölflinswil.
Das Vervielfältigen oder Weitergeben ist nicht gestattet.
Genähte Werke dürfen in Kleinserien verkauft werden.*

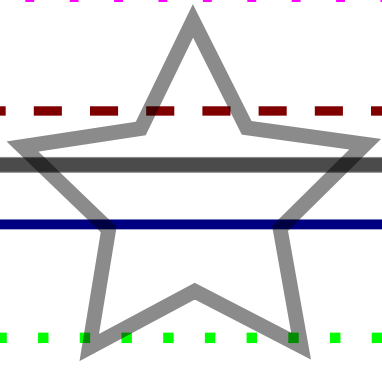
46

48

24

50

52



25

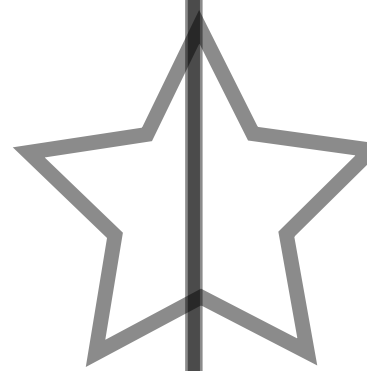
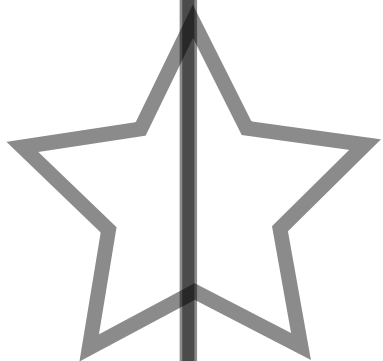
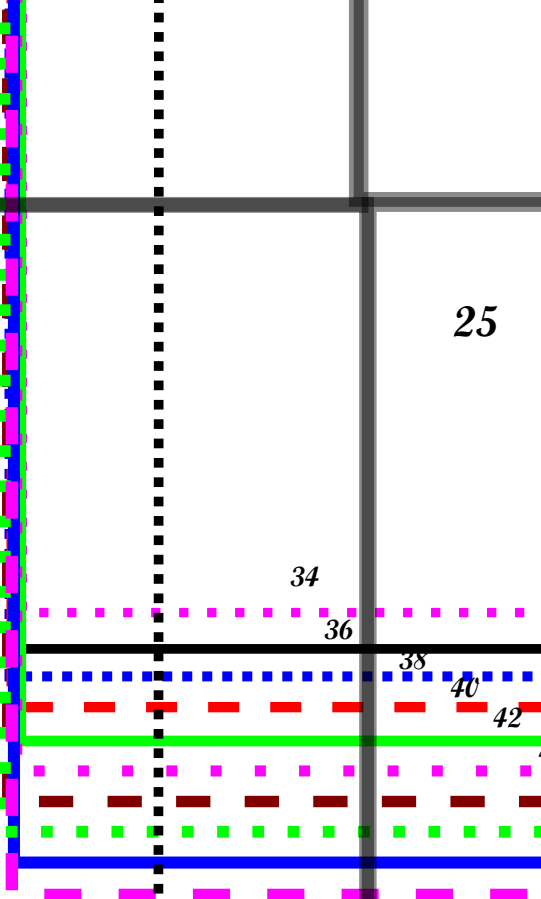
34

36

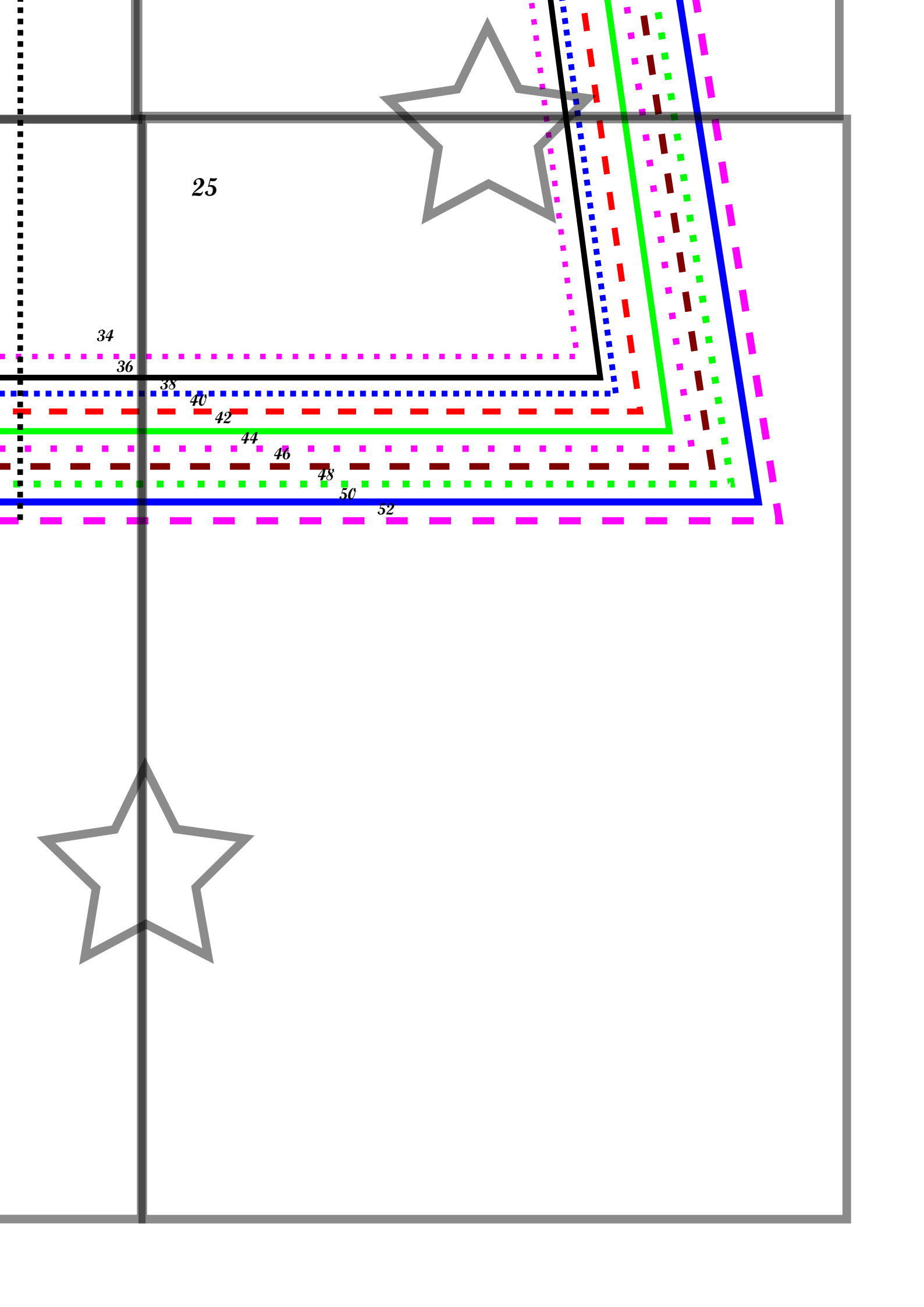
38

40

42



anlietung ist



25

34

36

38

40

42

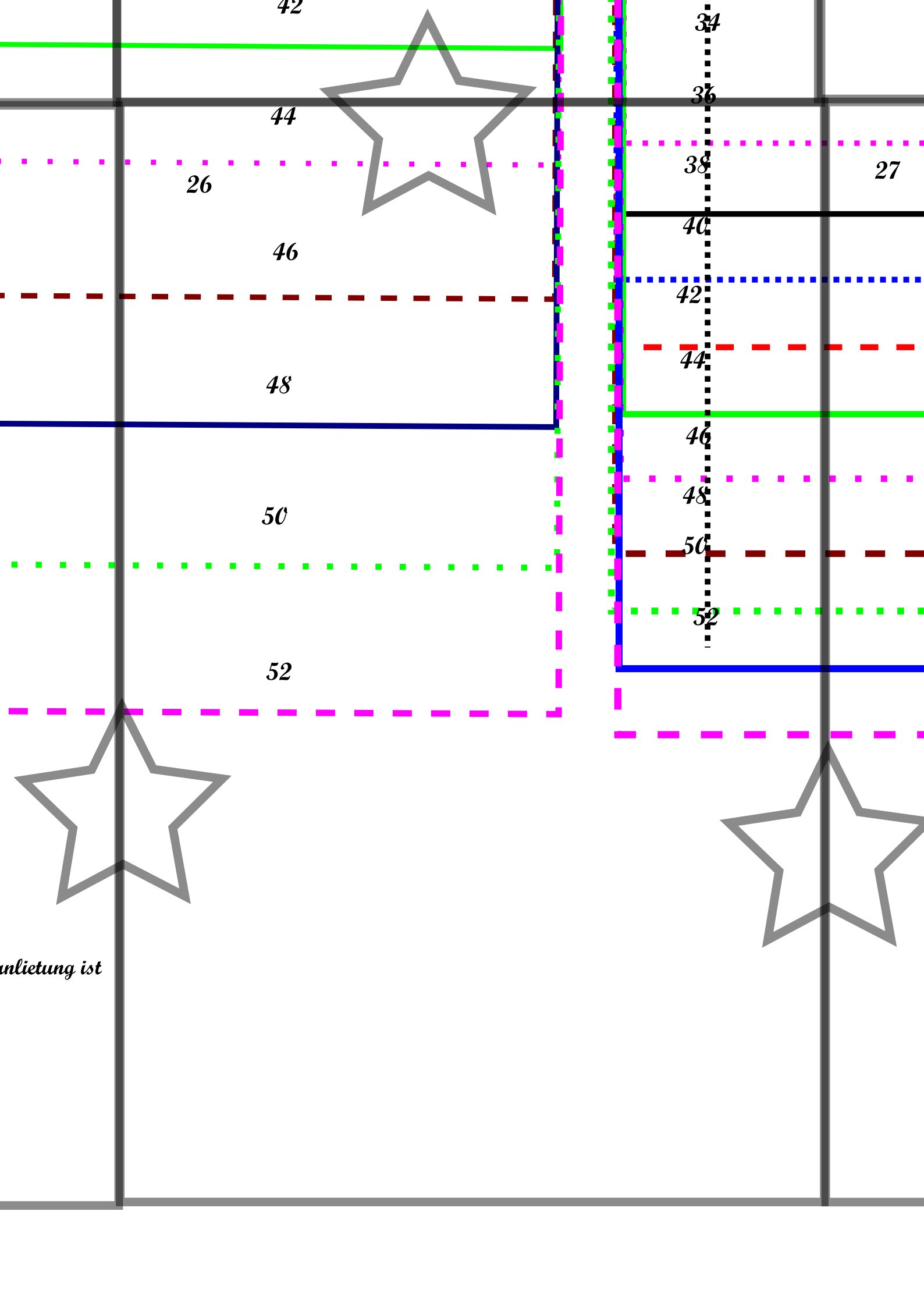
44

46

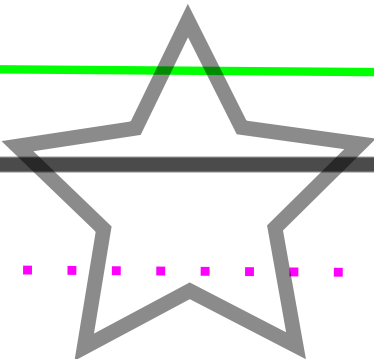
48

50

52



42



44

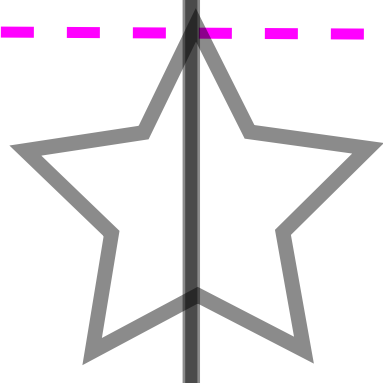
26

46

48

50

52



anlietung ist

34

36

38

27

40

42

44

46

48

50

52

