



## Easy Long Cardigan

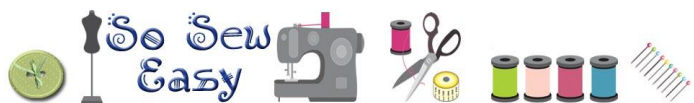
This is a super easy project. You'll see that there isn't a long tutorial because the design and construction are so simple.

This cardigan is very minimalistic, and streamlined, perfect for the busty girl. I have used tulle in the back to add a bit of drama, it is completely optional and you could use the same knit fabric to make the project even easier.

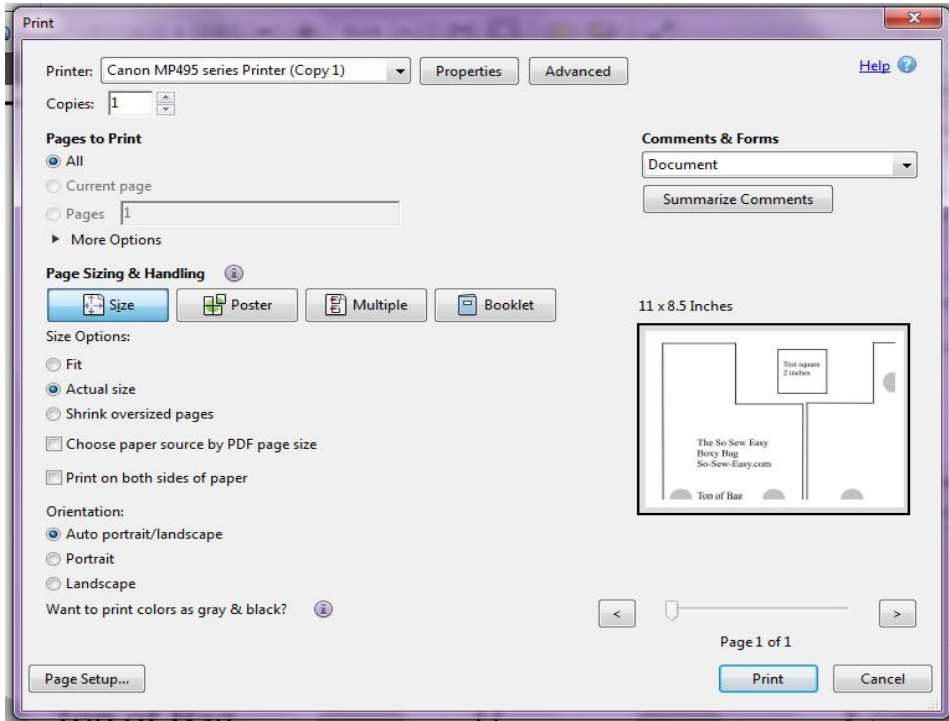
The easy long cardigan is a design that has been around since the sixties. A favorite of women who have to step out in their pajamas to drop the kids at school. At least that is what we see in the movies. The fact is it is a staple on a woman's wardrobe. Worn with leggings and a tank top or shorts and heels. It is the perfect accessory to hide your bottom. Yes, you read right.

**You can read more about this pattern over at So Sew Easy [HERE](#).**

Find more great sewing patterns at So Sew Easy – <http://so-sew-easy.com>



## To print your PDF pattern



the reverse of your fabric to cut.

## Help printing and assembling your pattern

You can find helpful tutorials on how to download, print and assemble PDF sewing patterns here:

[How to download and print a PDF sewing pattern](#)

[How to print and assemble a PDF sewing pattern](#)



Your pattern pieces come at the end of these instructions. For accurate printing, please make sure you are using the latest version of Adobe Reader. You can [download the latest version here](#) if you need to.

Select File → Print and the print dialogue box opens. Under Page Sizing and Handling, select ACTUAL SIZE . Check the preview in the right hand side illustration. Select the page numbers you want to print. You can print the whole document, or just the pattern pieces.

On the edge of the top left page is a box you can use to test your printing. This box should measure 2 inches square. If yours is wildly different you will need to check your printer options to make sure the pages are not being resized.

Use the grey guides on the overlap of the sheets to match up the pattern pieces, folding under or cutting off any overlaps, tape together and cut out your pattern pieces.

Also note that you will need to cut two straps at 4 inches by 22 inches, for which no pattern piece is supplied – it's just a rectangle! You can draw the straps on

Find more great sewing patterns at So Sew Easy – <http://so-sew-easy.com>

## Key Features:

- Mid-calf but can be lengthened or shortened
- No buttons or belt giving a slimming and very elegant look
- Sizes 8 to 22
- Adaptable to printed or plain fabric
- Super easy to sew

## Materials

- [Thin cotton or rayon knit jersey](#). Please print the pattern to make sure you have enough fabric.
- Soft tulle to match the color of the jersey
- [Fusible interfacing](#)

## Tools

- Sewing machine
- Double [twin jersey](#) needle
- Jersey needle
- [Cover stitch](#) sewing machine (optional)
- or Serger



Find more great sewing patterns at So Sew Easy – <http://so-sew-easy.com>

Thank you for downloading this pattern and tutorial. I hope you enjoyed making this project and remember that I love to see what you made so do upload your completed projects to the pattern page on Craftsy.

**Keep up with all the latest news and sewing projects at [So Sew Easy](#).**

We also have a really great sewing chat group where you can ask questions, share your completed projects, and get 24 hr sewing inspiration. It's not just for So Sew Easy projects – you can chat about all sewing there, whether a newbie just starting out, or an advanced and experienced sewer, there's something for everyone in the sewing chat group. Join us here.

### **[SEWING CHAT GROUP](#)**

**For the latest list of both free and paid patterns available, pop on over to [my designer page at Craftsy](#).**

**This pattern graphic, the photos and the instructions are copyright So Sew Easy Pte Ltd and protected by law. All rights reserved. Please do not copy, publish, sell, redistribute or alter them in any way. Please don't print and give to your friends, or send it to anyone by email. Please do not rebrand this work as your own and sell or give it away, even if altered. This is intended for your personal use. If you would like to recommend these instructions, please pass on the original download link at So-Sew-Easy.com. Thank you for your understanding.**

**Usage – you ARE allowed to use this pattern to make things to sell on a small handmade basis, such as for craft fairs and for your Etsy shop. However it may not be used for larger scale commercial purposes without a commercial license.**

*Find more great sewing patterns at So Sew Easy – <http://so-sew-easy.com>*



2 x 2" Test square

Long Cardigan

Copyright 2016 @

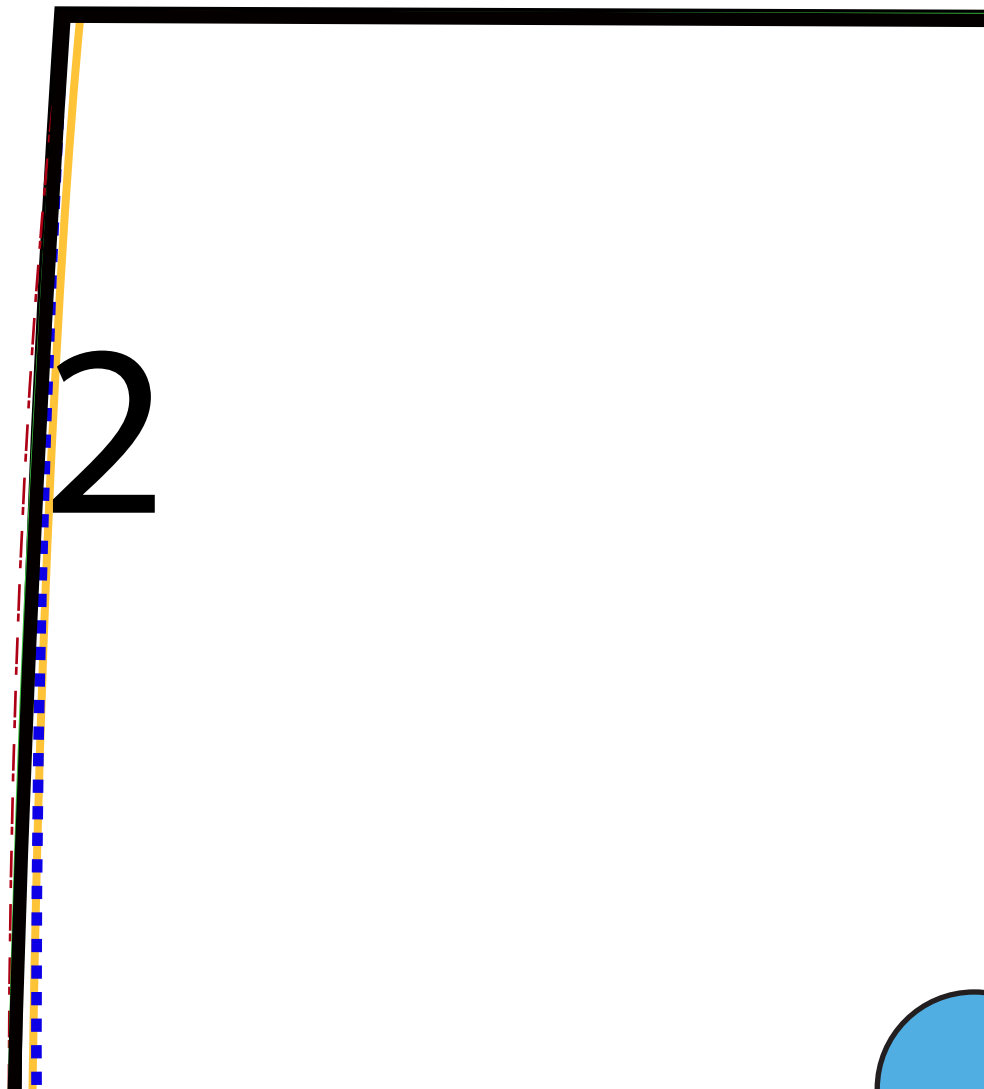
So-Sew-Easy.com

1

-sew-easy.com



-os



2

---

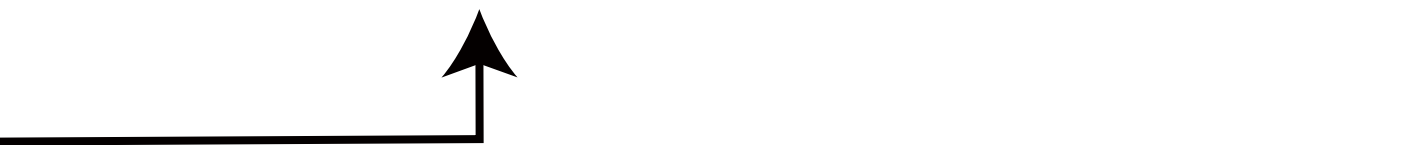
3



**Cut on fold**  
**4**

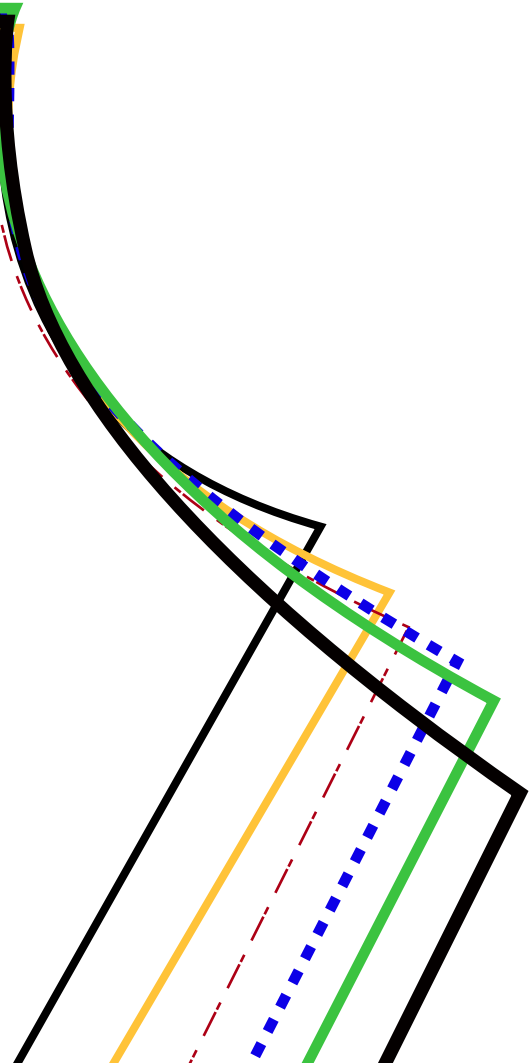






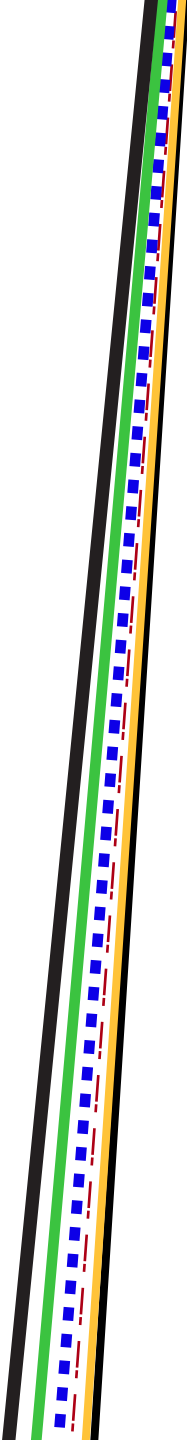
5



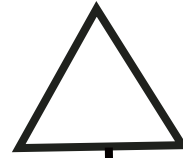


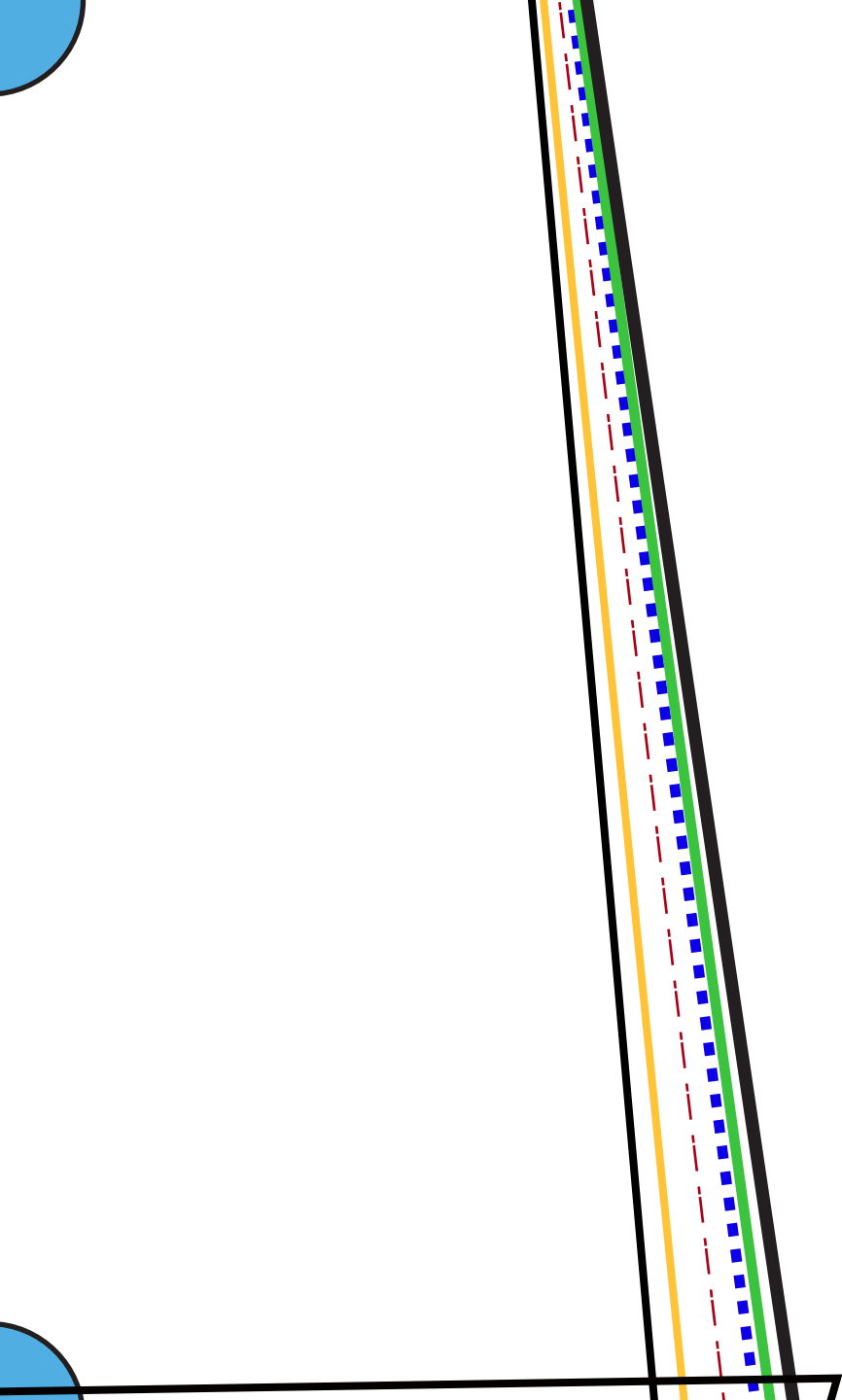
**Back**

9



7





8



Size 8



Size 10



Size 12



Size 14



Size 16



Size 18



9

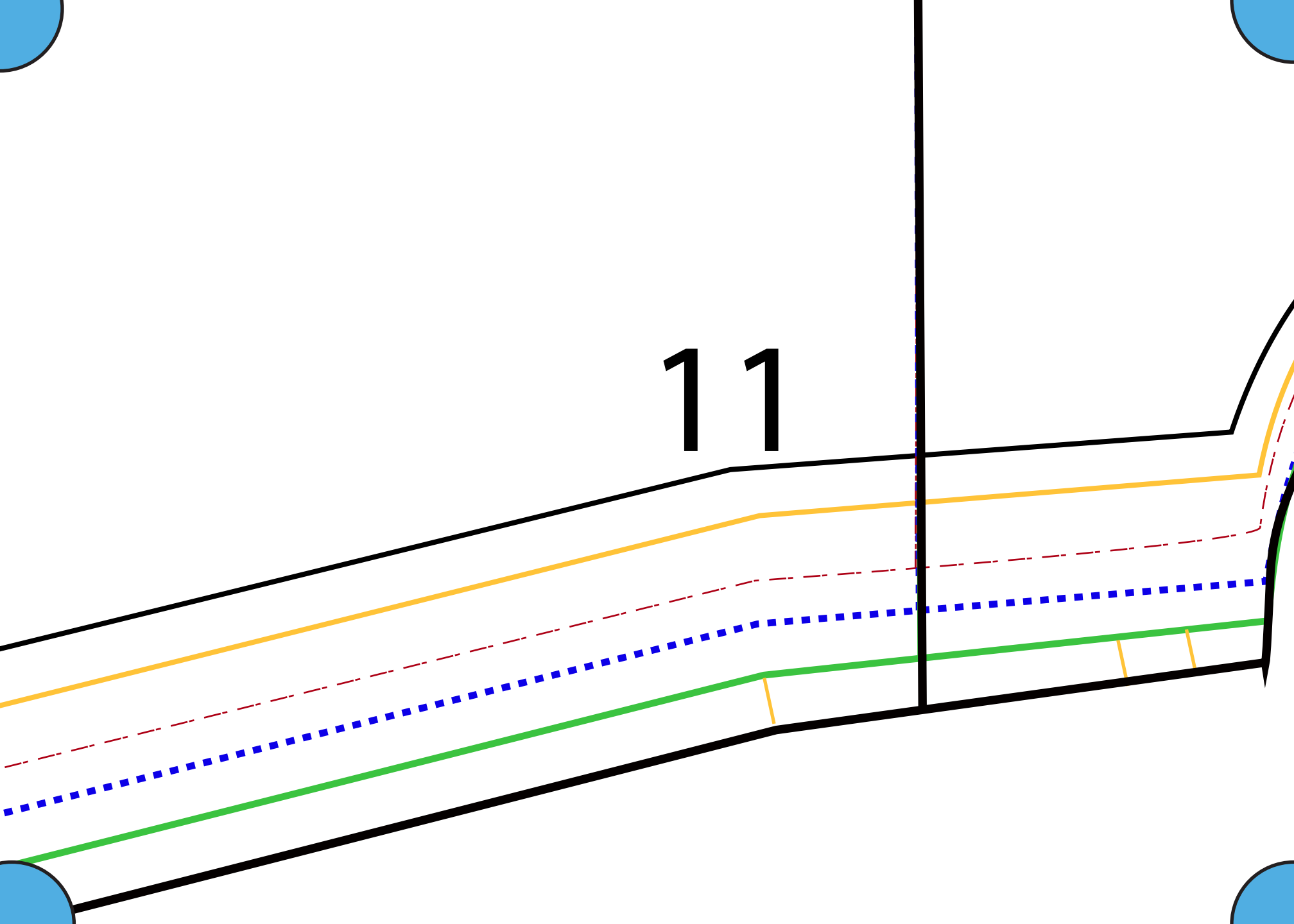
The page features four blue circles, one in each corner, partially cut off by the edges. The number '10' is centered in the upper half of the page.

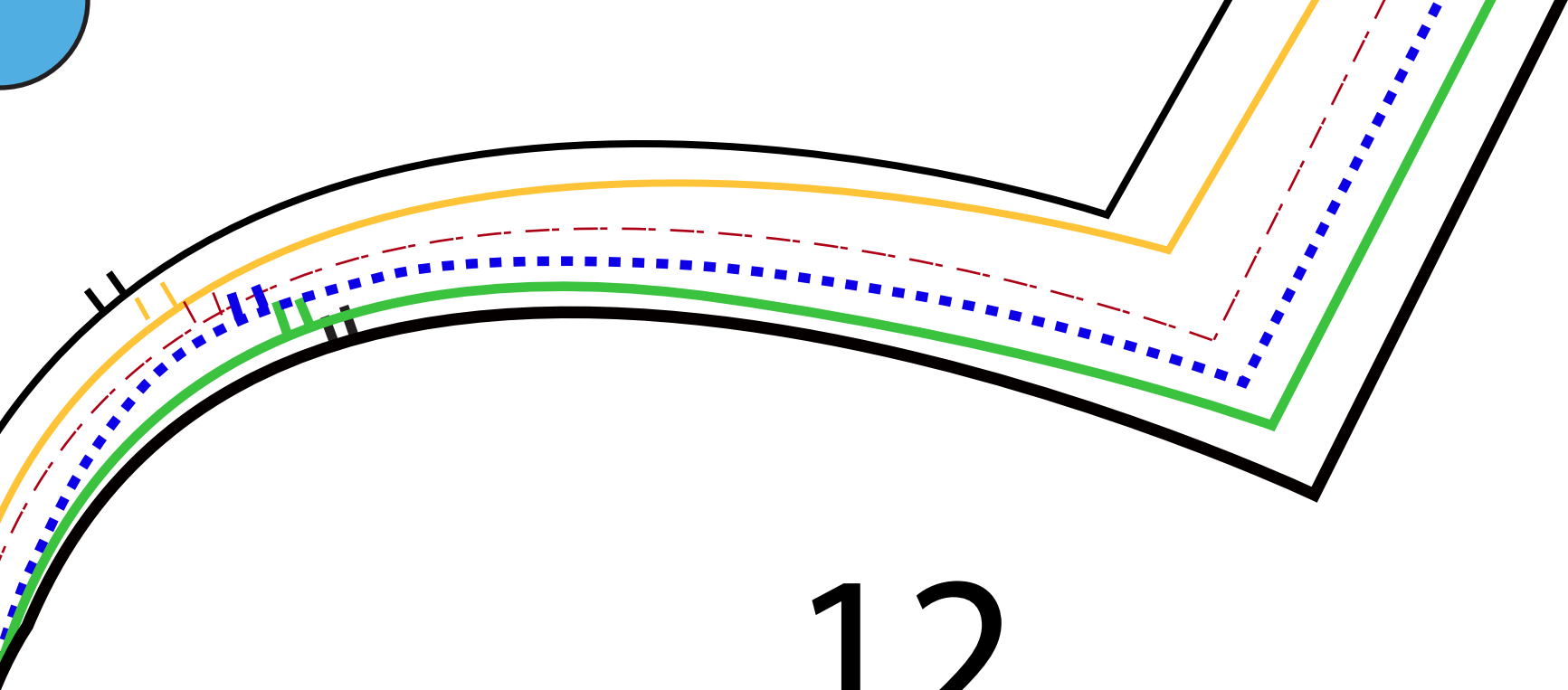
10

So-sew-easy.com

The bottom of the page is decorated with four parallel lines sloping upwards from left to right. From top to bottom, they are: a solid black line, a solid yellow line, a dashed red line, and a dotted blue line. A thin green line is also visible at the very bottom right corner.

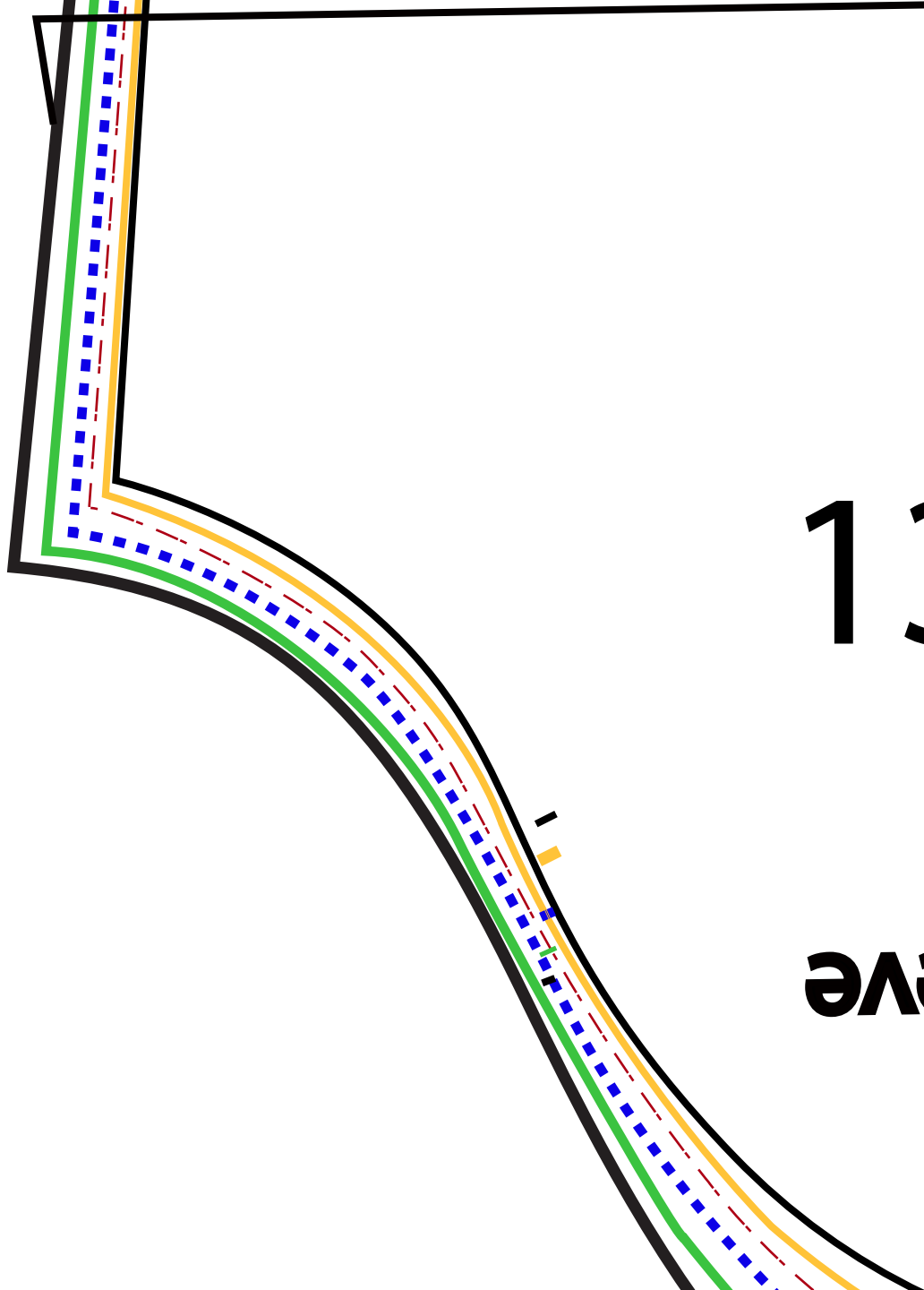
11





12

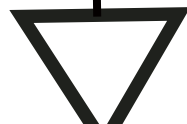




13

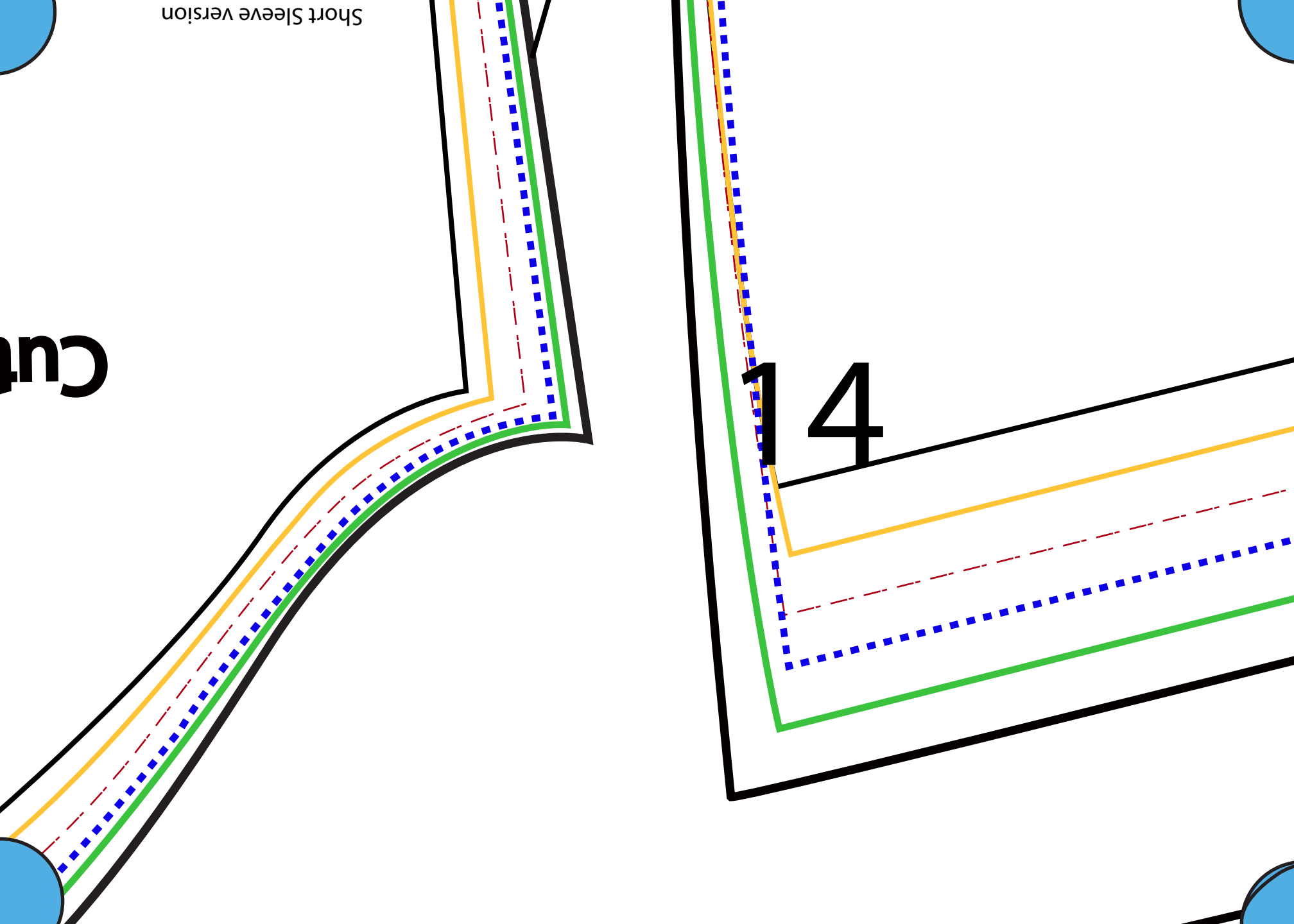
Sleeve

two



Cut

Short Sleeve version

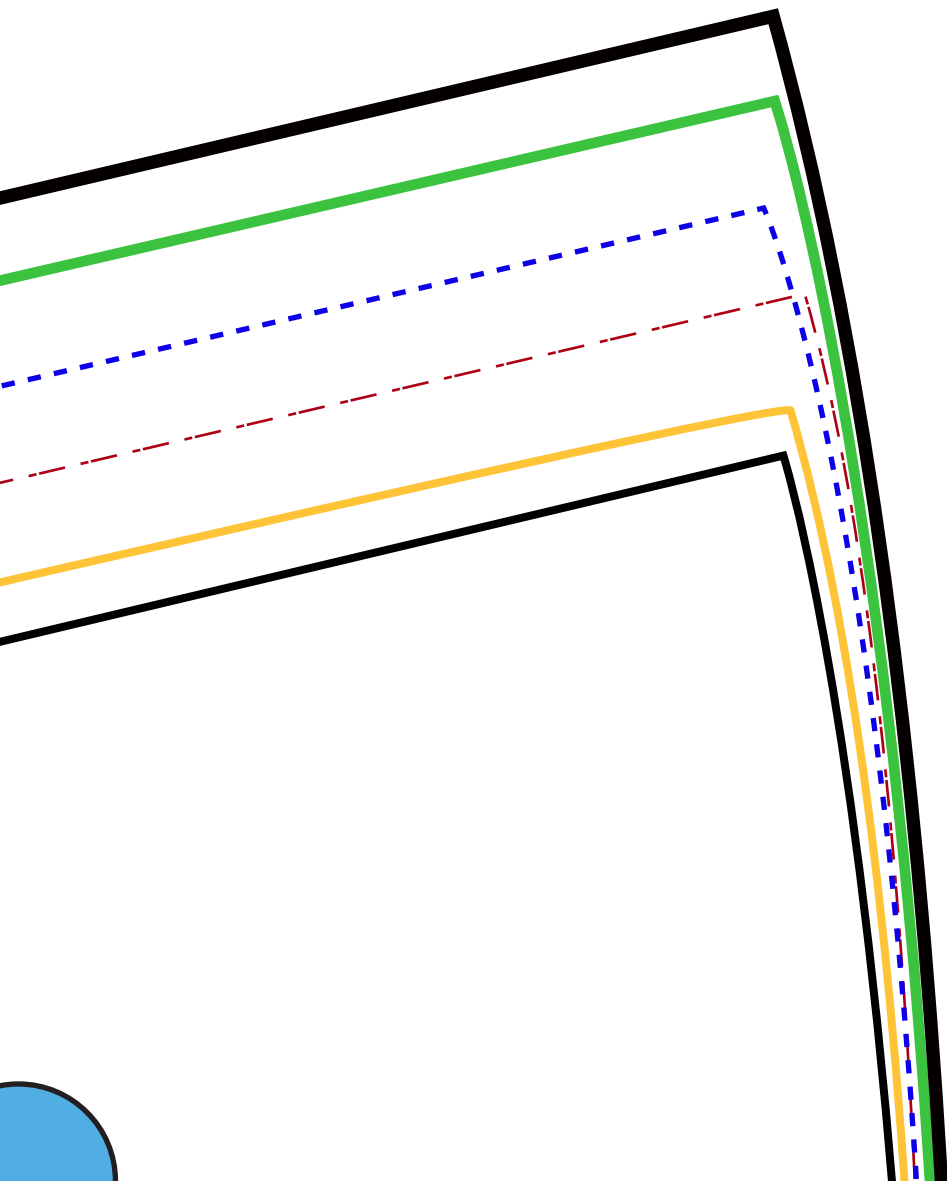


The background features a series of parallel diagonal lines in black, yellow, red (dashed), blue (dotted), and green. Three blue circles are partially visible at the corners: top-left, top-right, and bottom-right.

15



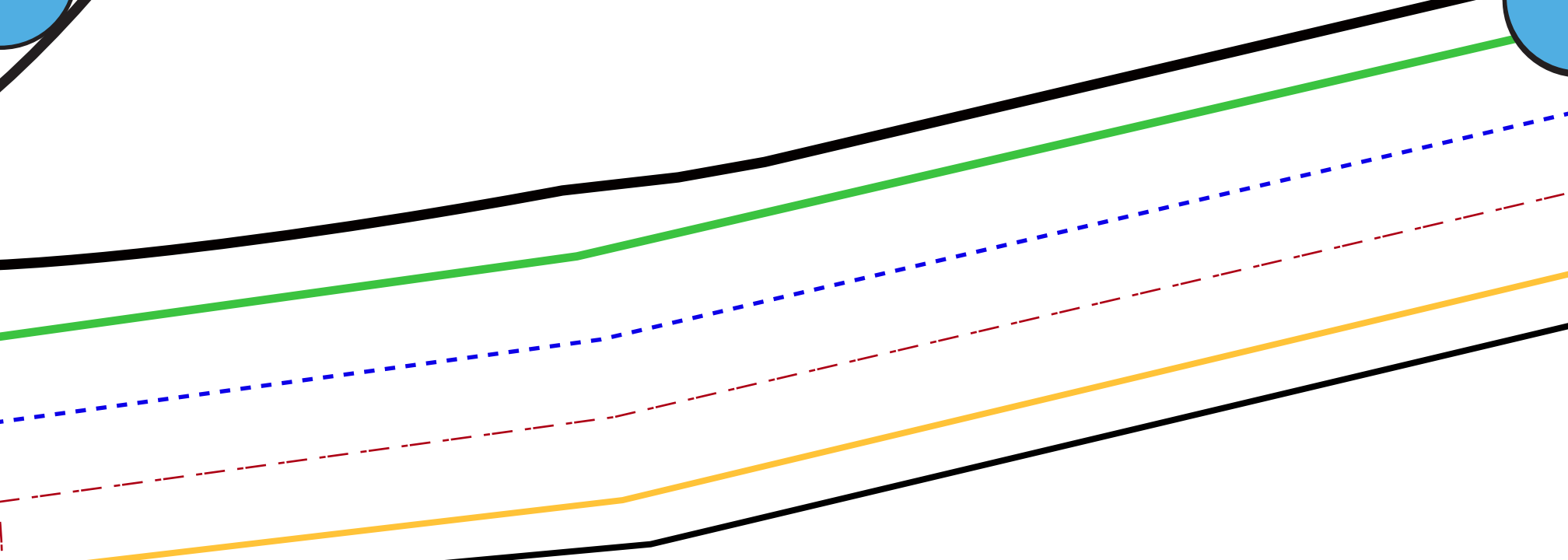
16



17

A large number '18' is centered on a white background. The number is surrounded by several concentric, wavy lines in black, green, blue, red, and yellow, designed for tracing. The lines are slightly offset from each other, creating a layered effect. The number '18' is in a bold, black, sans-serif font.

18



19  
So-sew-e

The image features a white background with several decorative elements. At the top, there are four lines sloping downwards from left to right: a solid black line, a solid yellow line, a dashed red line, and a dashed blue line. In the corners, there are four blue circles, each with a black outline, partially visible. The text 'asy.com' is written in a bold, black, sans-serif font, and the number '20' is written in a white, outlined, sans-serif font to its right.

asy.com 20

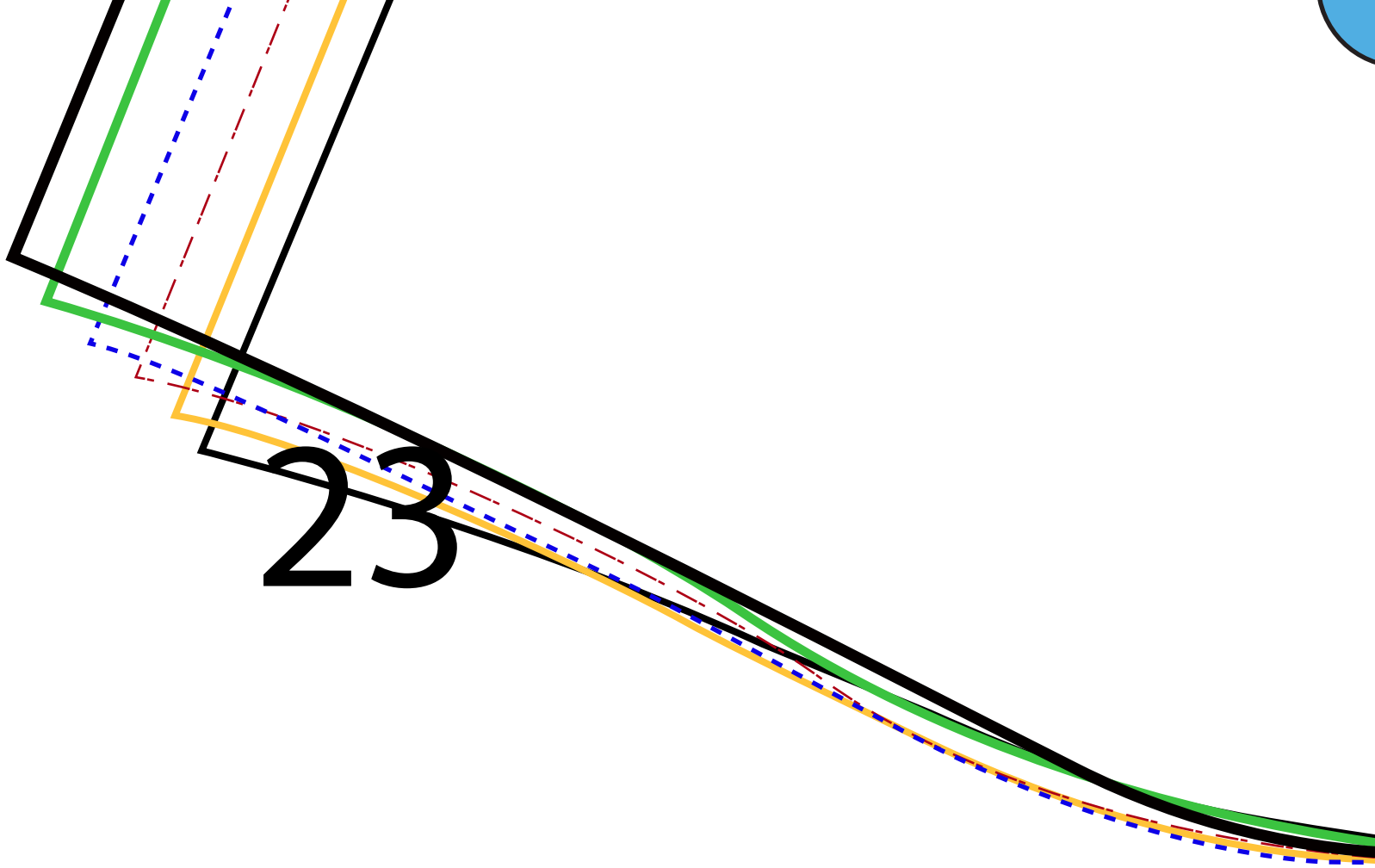


Size -	Bust-	Waist-	Hips-	Hem
8	34	36	45	67
10	36	38	46 1/2	68 1/2
12	38 1/2	40 1/2	48 1/2	70
14	40	42	50	71 1/2
16	41 1/2	43 1/2	52	73
18	44	46 1/2	54	74 1/2

21

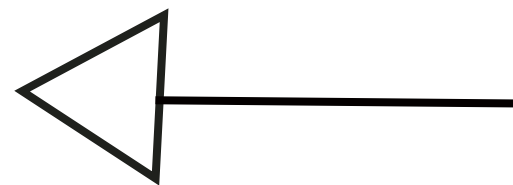


22



23

24



25

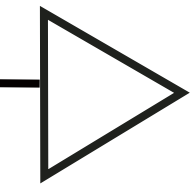
Cut two

---

---

---

26





27

