

Title: The Floral Collection  
 Designer: Amanda Walker  
 Page: 19

# The Floral Collection

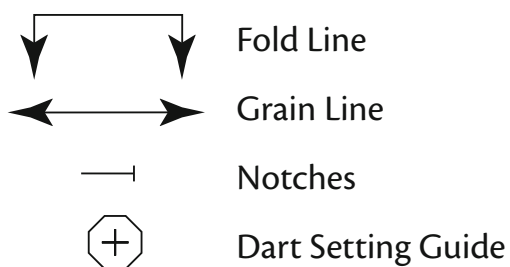
- 1 Front Side Panel**, cut two pairs
- 2 Centre Front Pleated Panel**, cut one on fold
- 3 Sleeve**, cut one pair
- 4 Back Bodice**, cut two pairs
- 5 Front Skirt**, cut one on fold
- 6 Back Skirt**, cut one pair
- 7 Pleat Band**, cut one only

**The Floral Collection is graded to five sizes, use the key below to identify the size for you.**

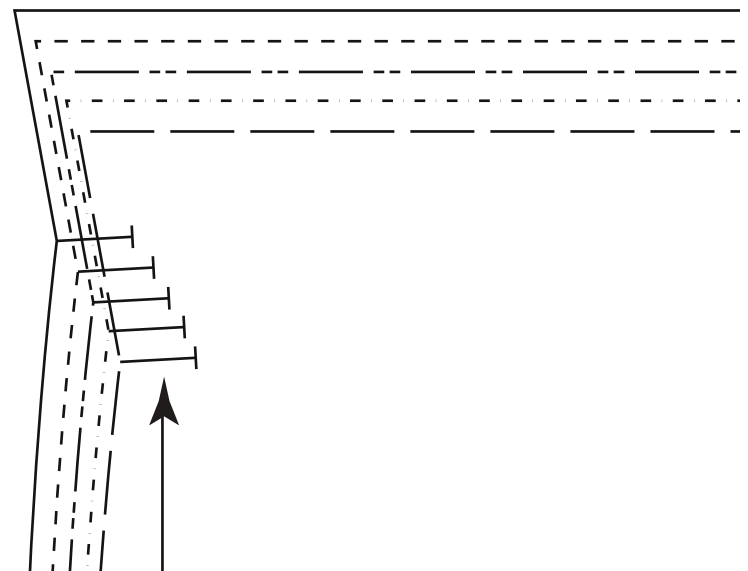
Size 8 \_\_\_\_\_  
Size 10 .....  
Size 12 \_\_\_\_\_  
Size 14 .....  
Size 16 \_\_\_\_\_

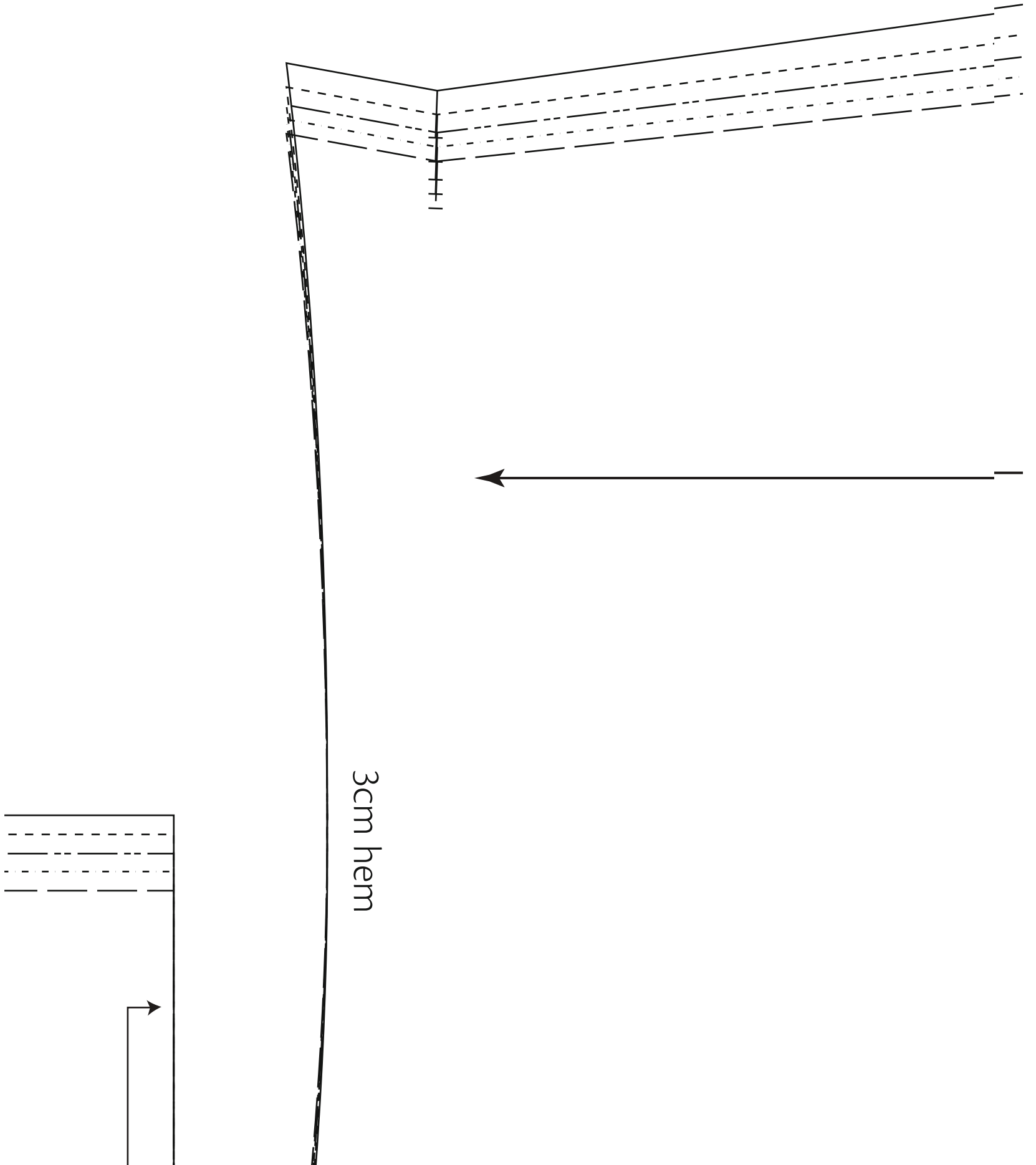
As this is a multi-size pattern you are able to easily work with different sizes to accommodate your body shape, for example following the size 12 for the bodice and the size 14 for the lower sections, joining the two with a smooth even line.

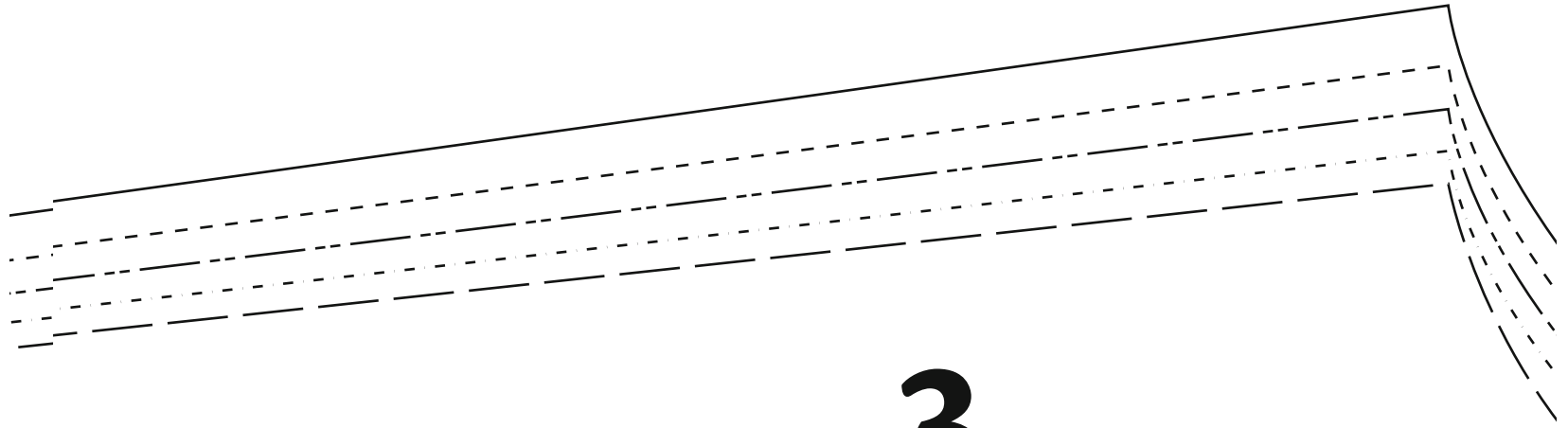
## Key to pattern symbols:



All pattern pieces are full size and include a 1.5cm seam allowance unless otherwise stated







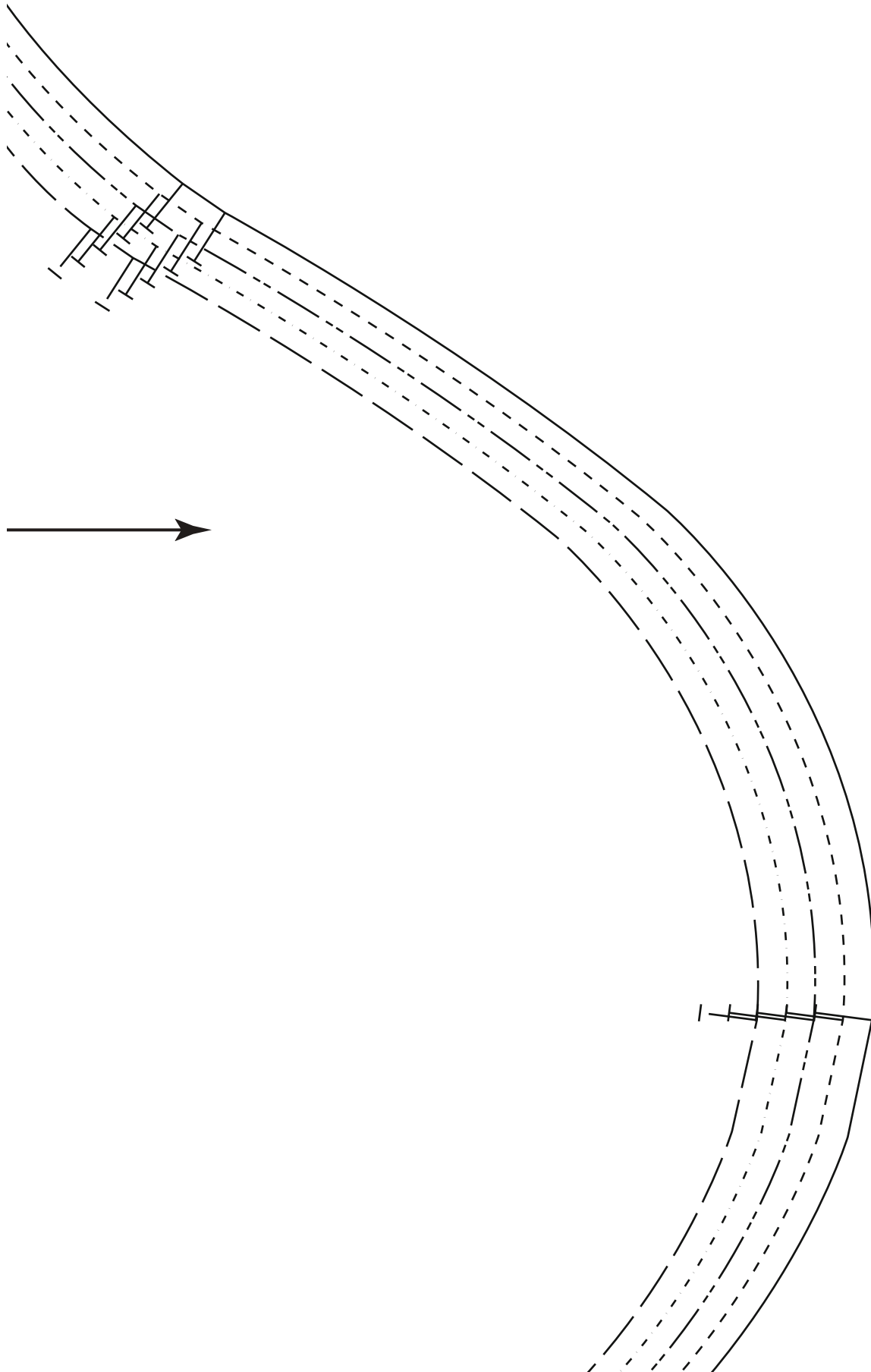
# 3

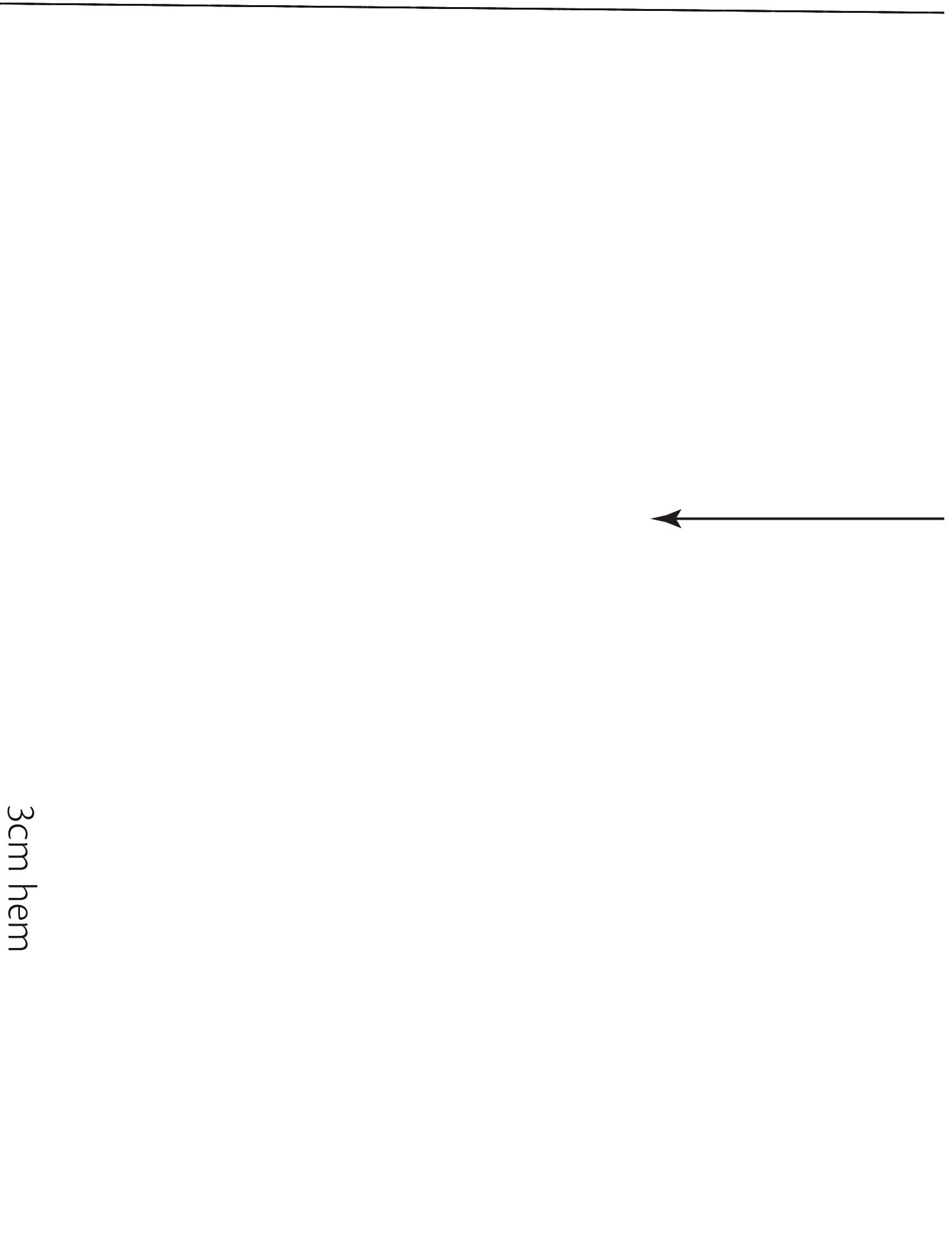
## Sleeve

Cut one pair

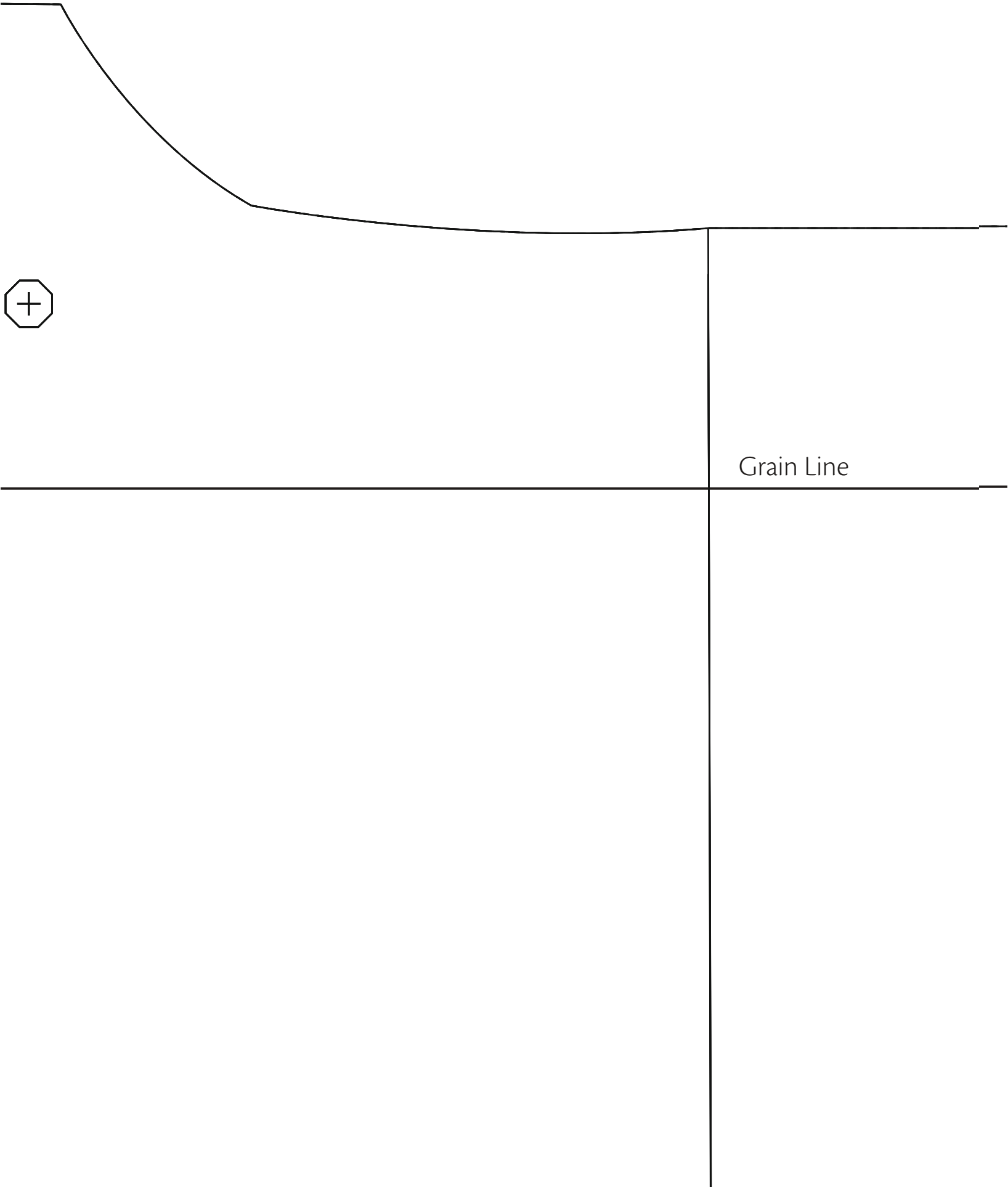
Grain Line

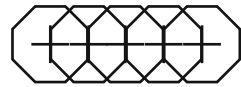






3cm hem

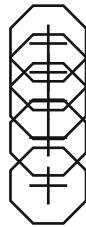




Zip Placement Guide

---

Dart Setting Guide

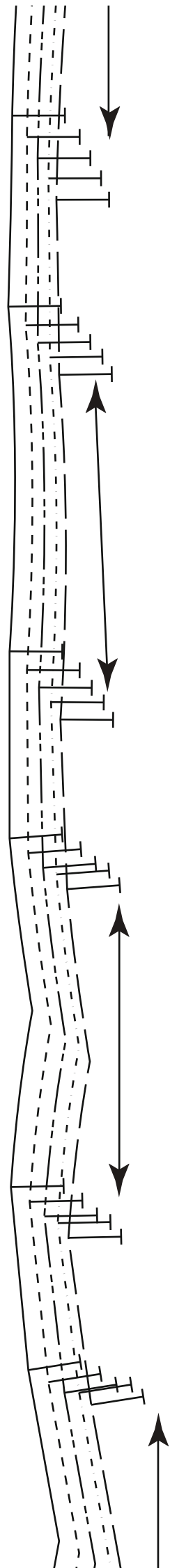
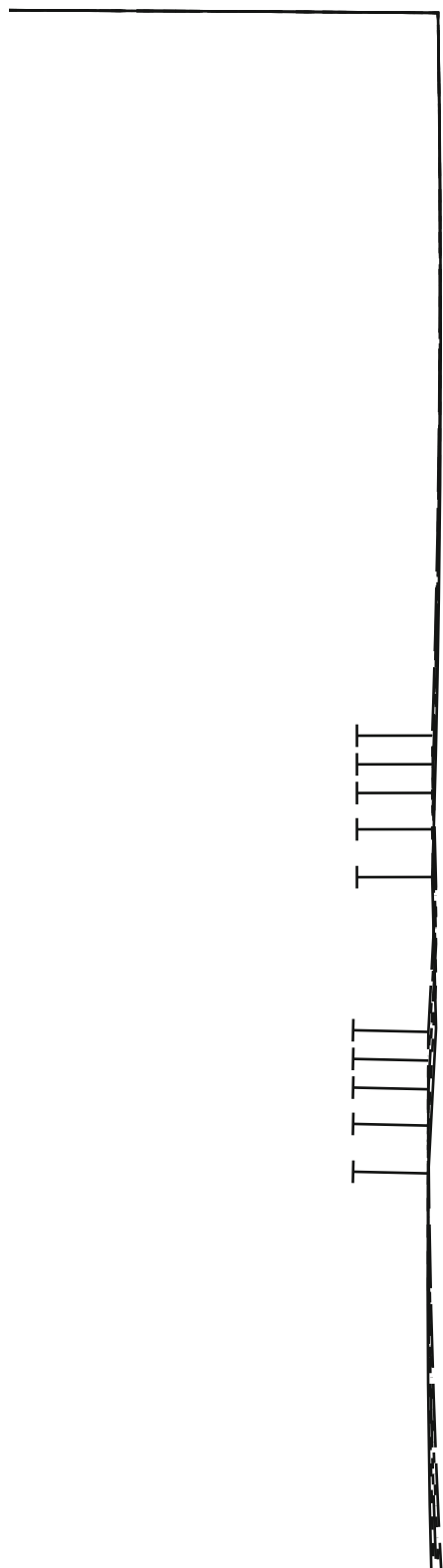


# 6

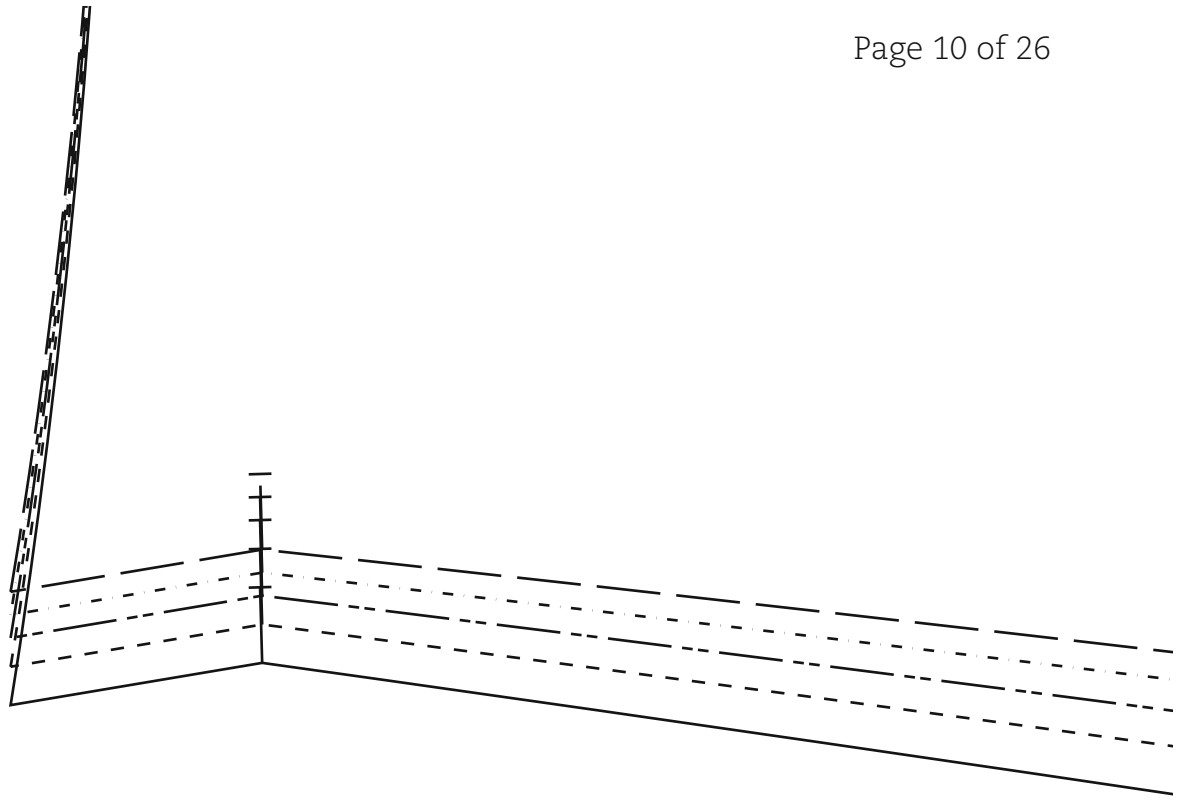
## Back Skirt

Cut one pair





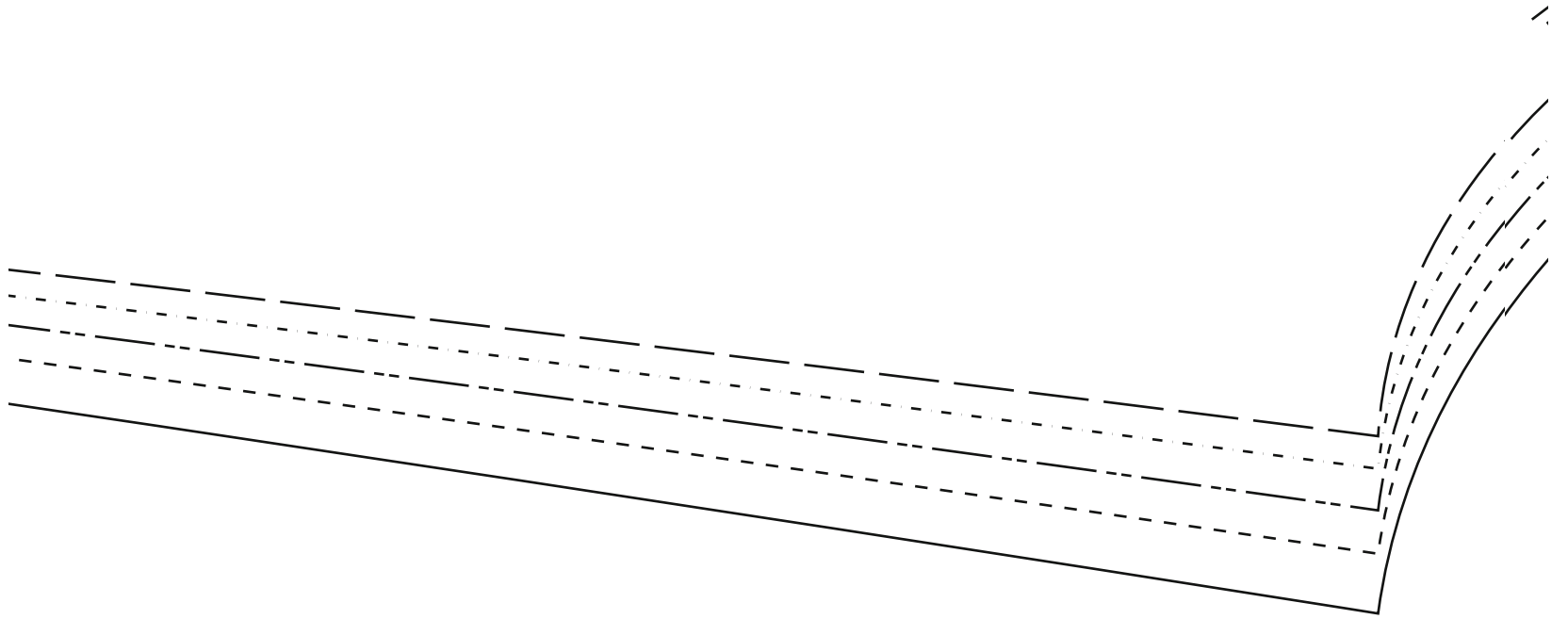
**ed Panel**



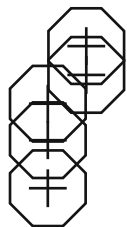
# 4

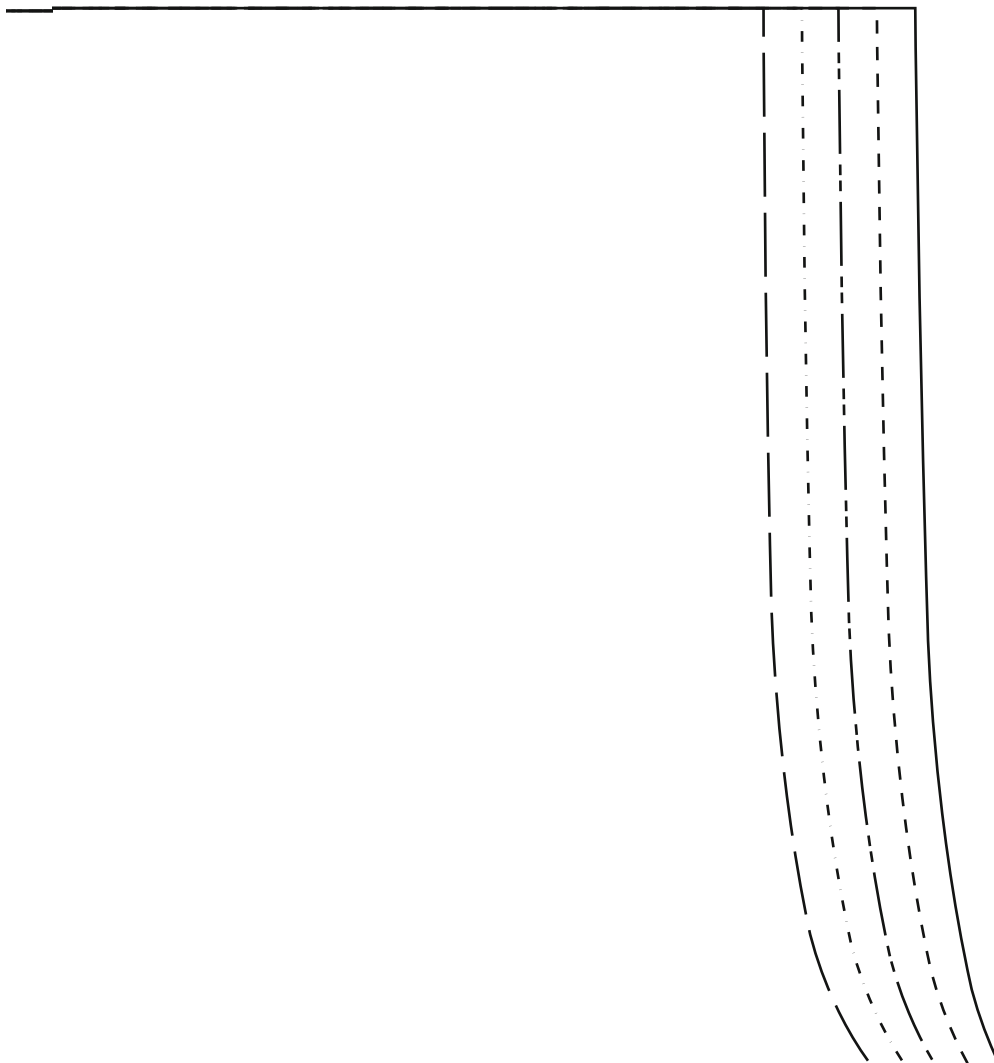
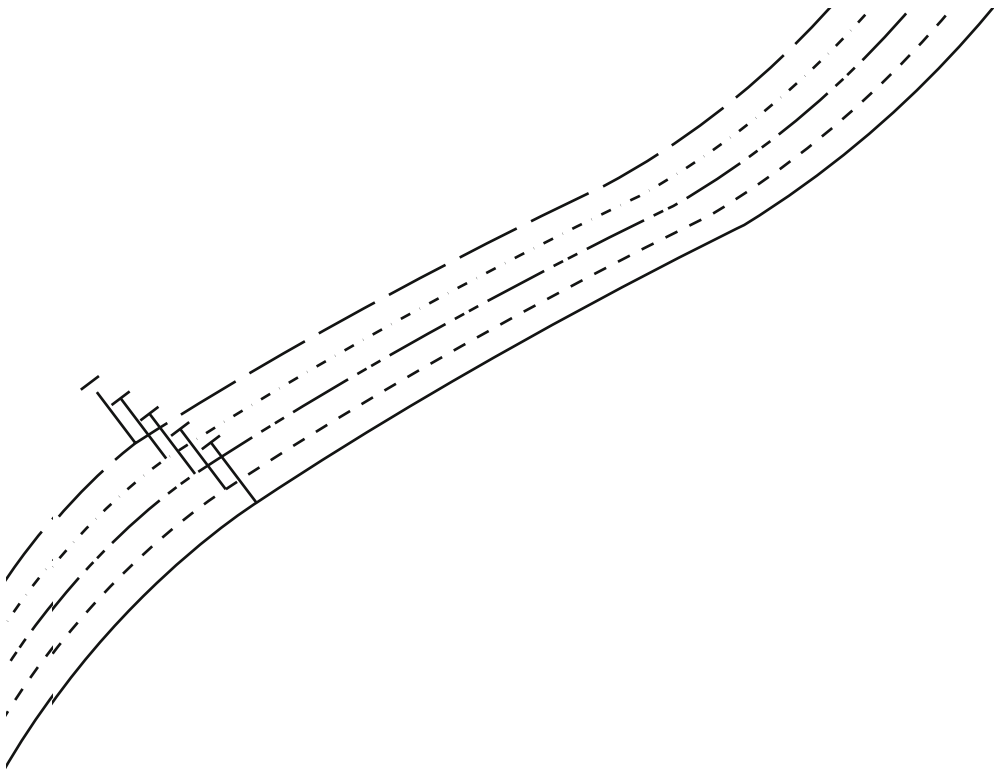
## Back Bodice

Cut two pairs



;

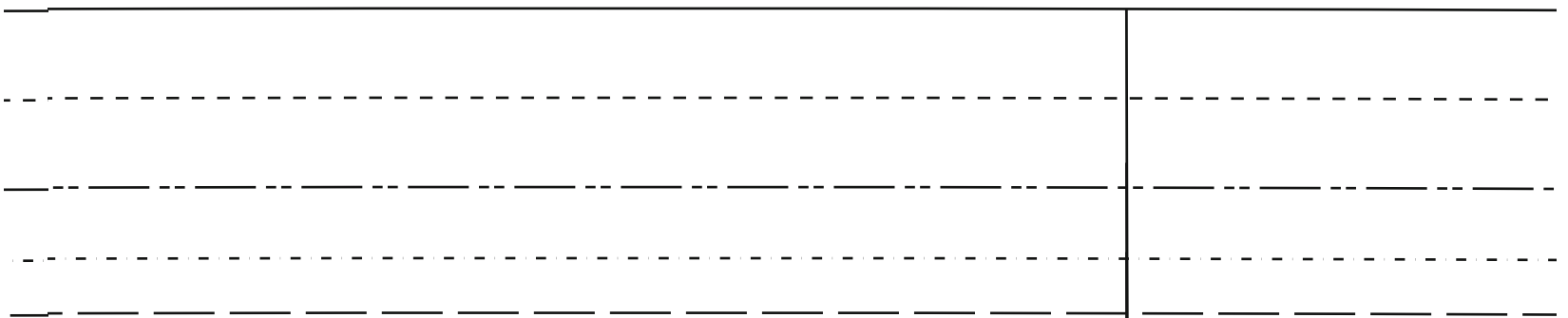
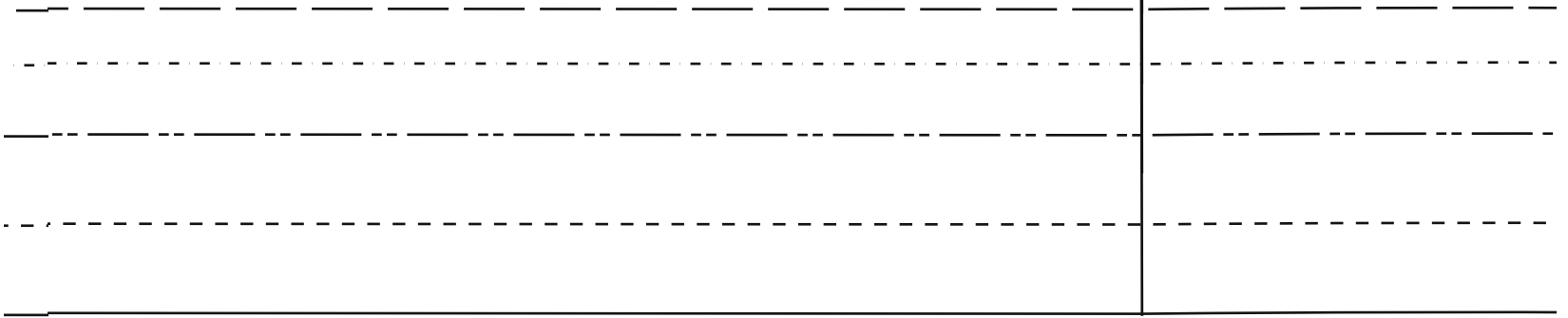




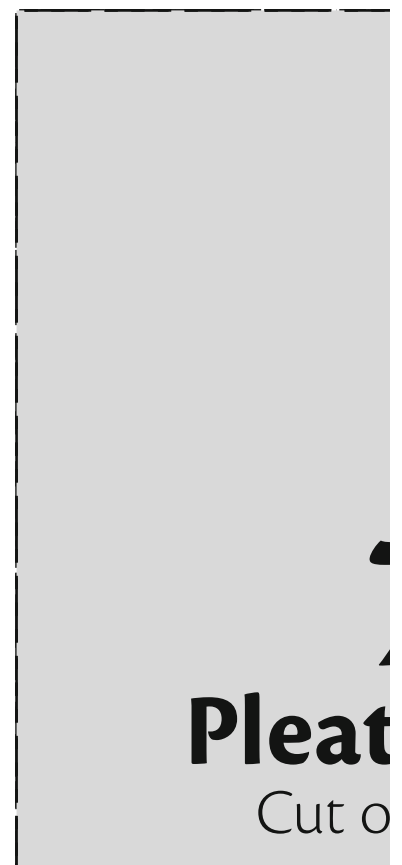
Handwriting practice lines consisting of four sets of horizontal lines. Each set includes a solid top line, a dashed midline, and a solid bottom line.

Handwriting practice lines consisting of four sets of horizontal lines. Each set includes a solid top line, a dashed midline, and a solid bottom line.

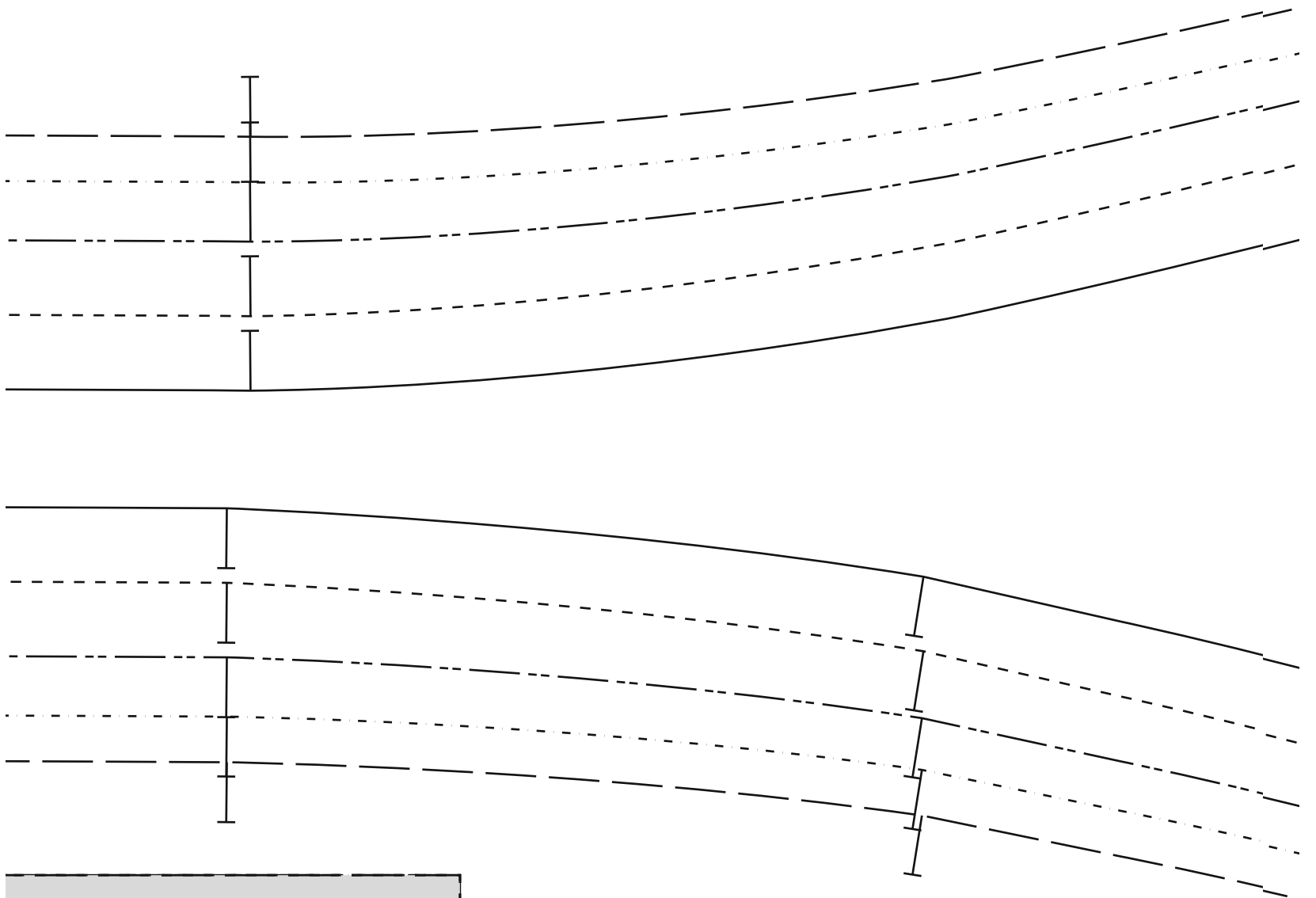
**Fr**  
Cu



**5**  
**Front Skirt**  
Cut one on fold



**Pleat**  
Cut o



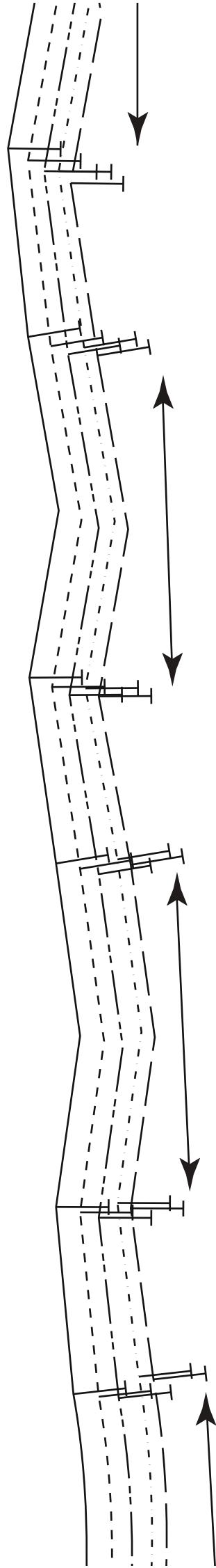
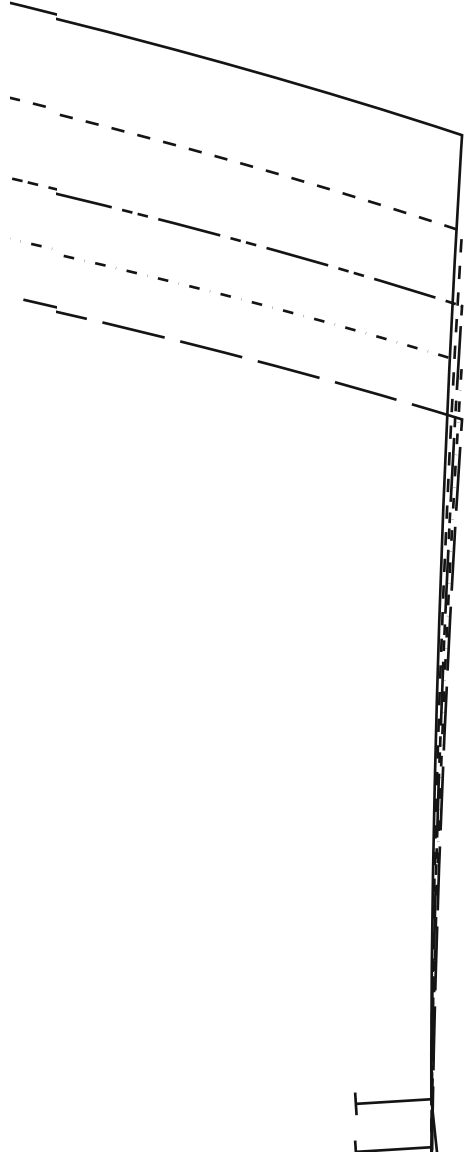
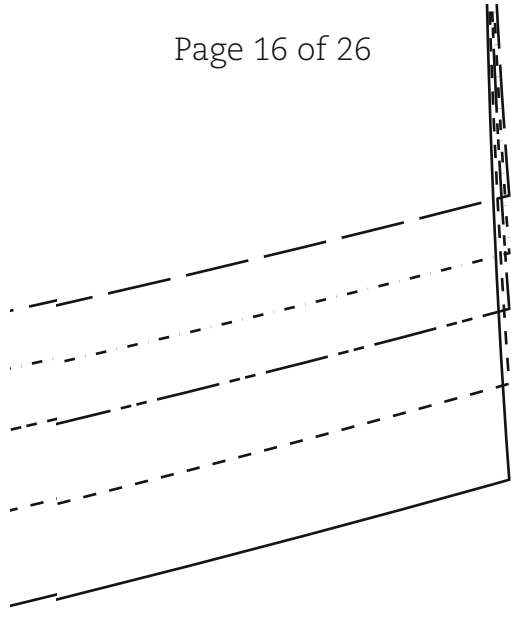
**7**  
**Band**  
one only

in Line

A grey rectangular area with a dashed border. An upward-pointing arrow is located on the right side of the rectangle. The text '7 Band one only' is on the left, and 'in Line' is written vertically on the right side of the rectangle.

Dart Setting Guide





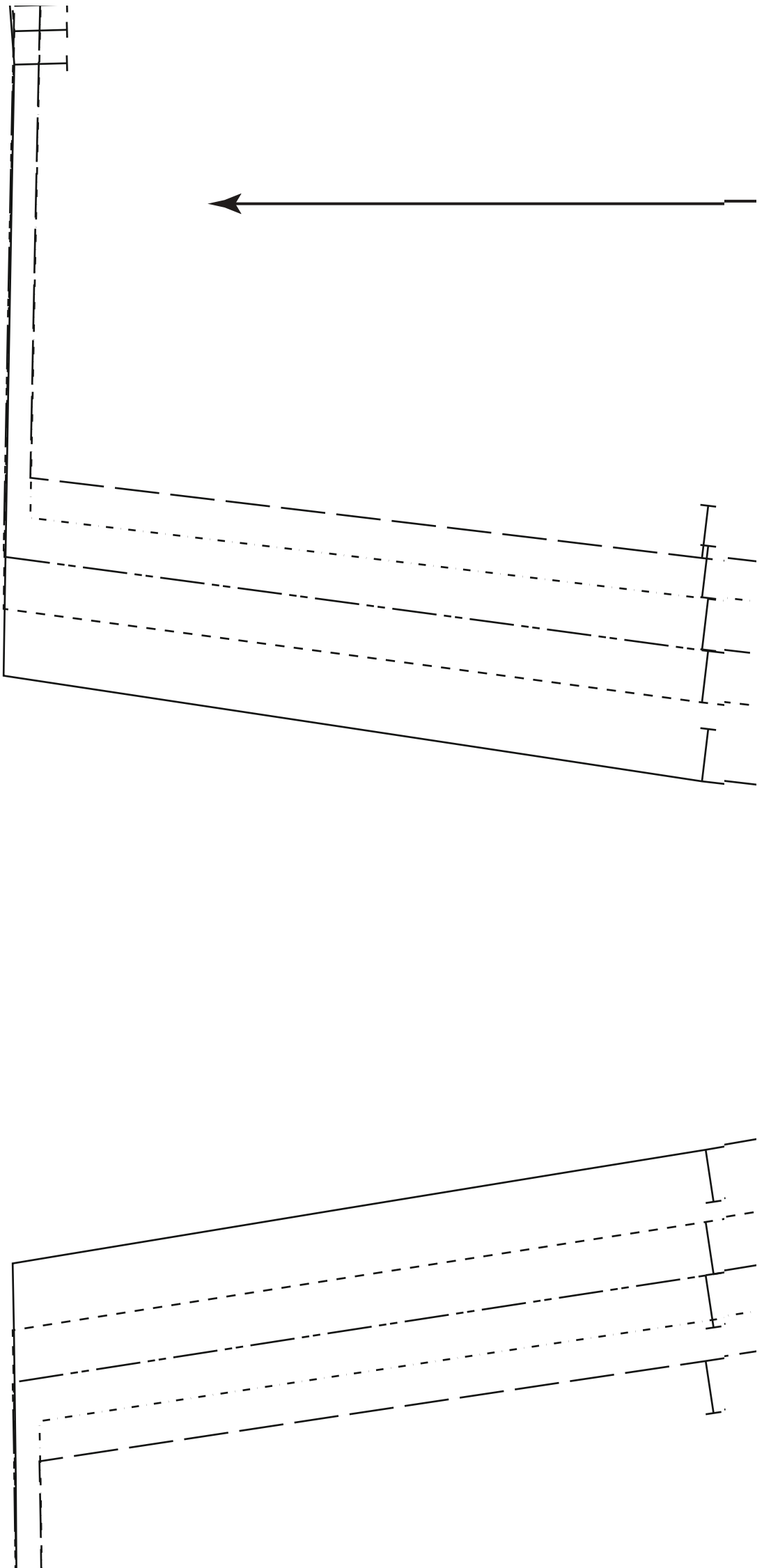
2

# Centre Front Pleate

Cut one on fold

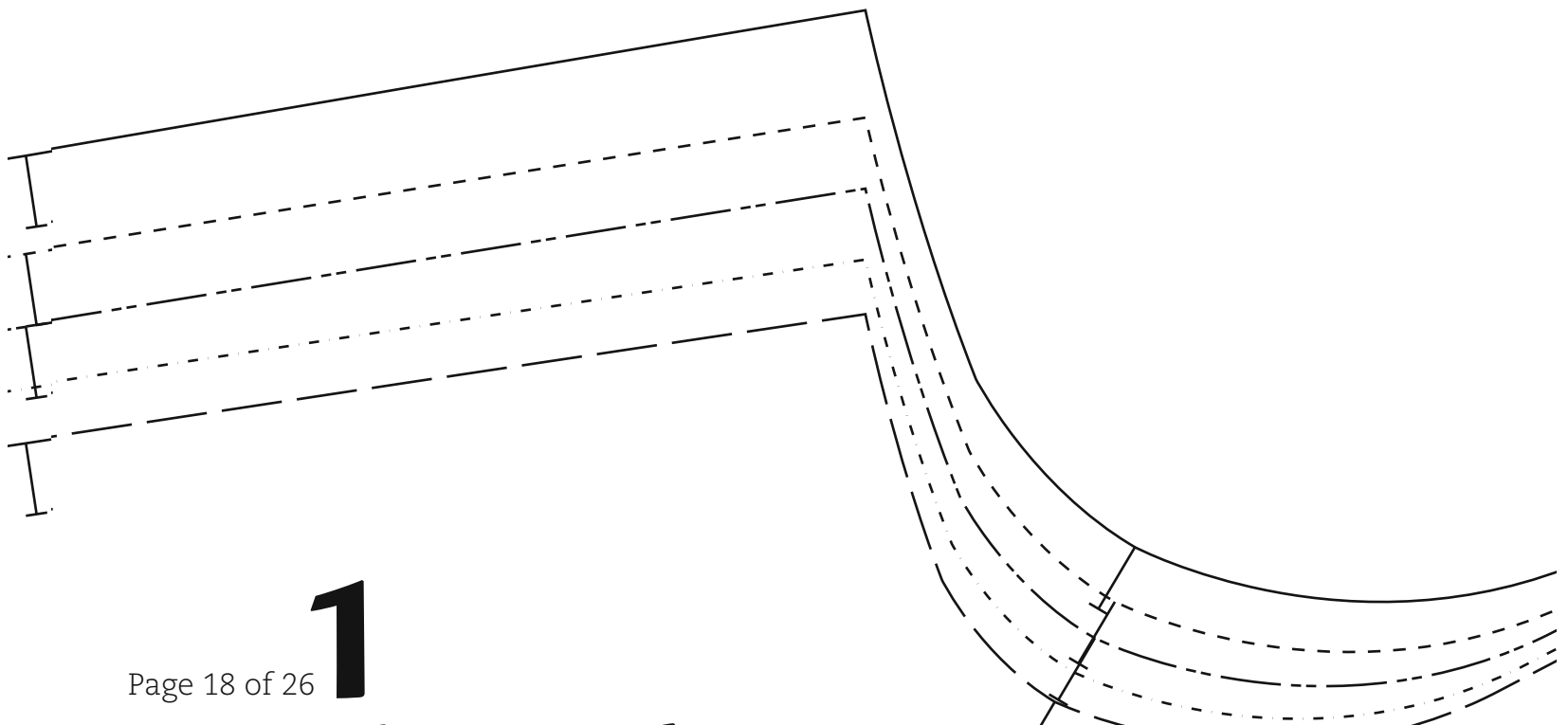
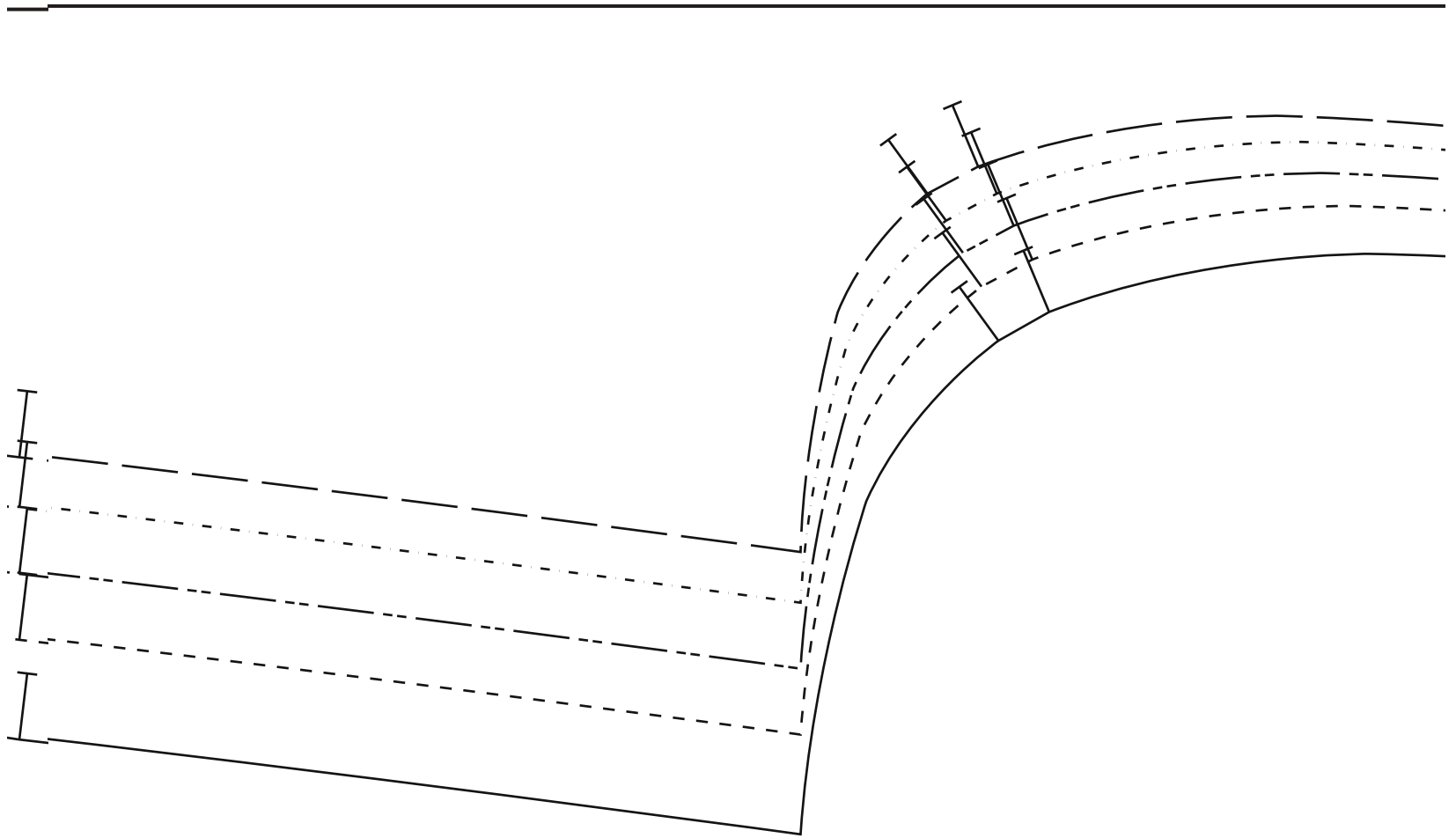


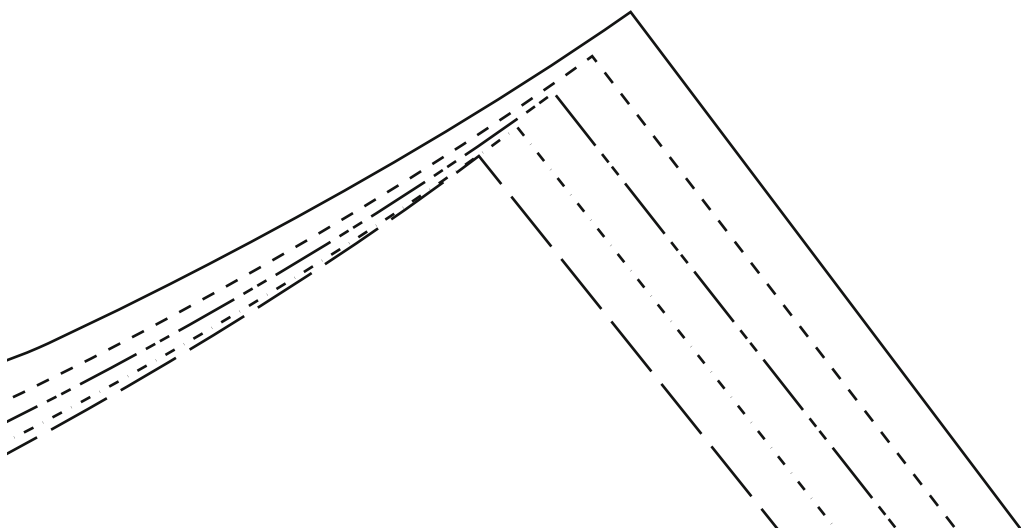
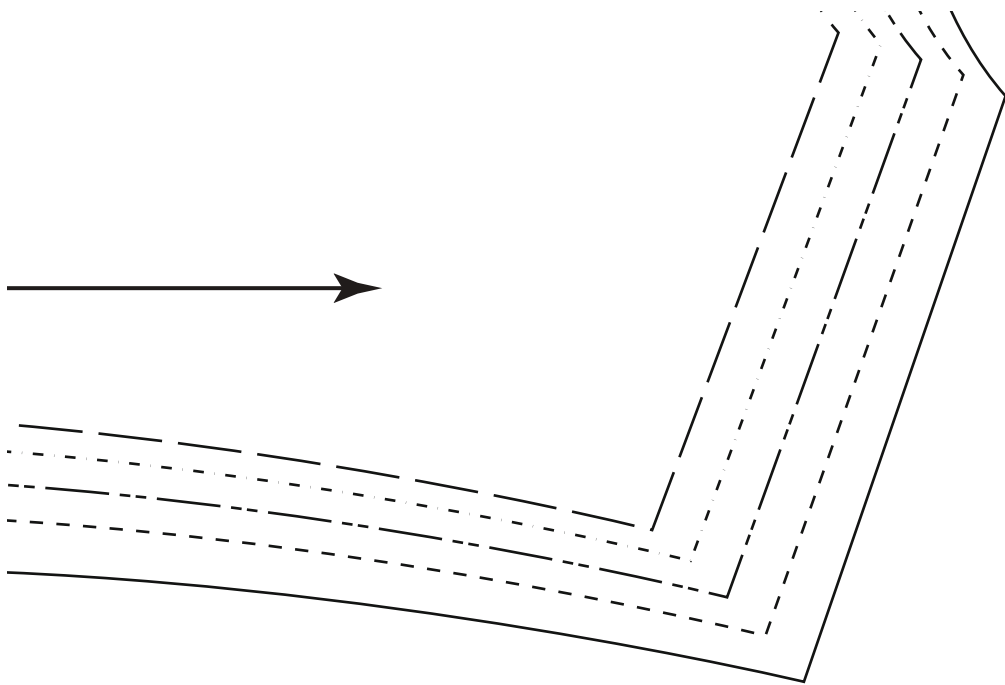
Fold Line



# Dart Setting Guide

Grain Line

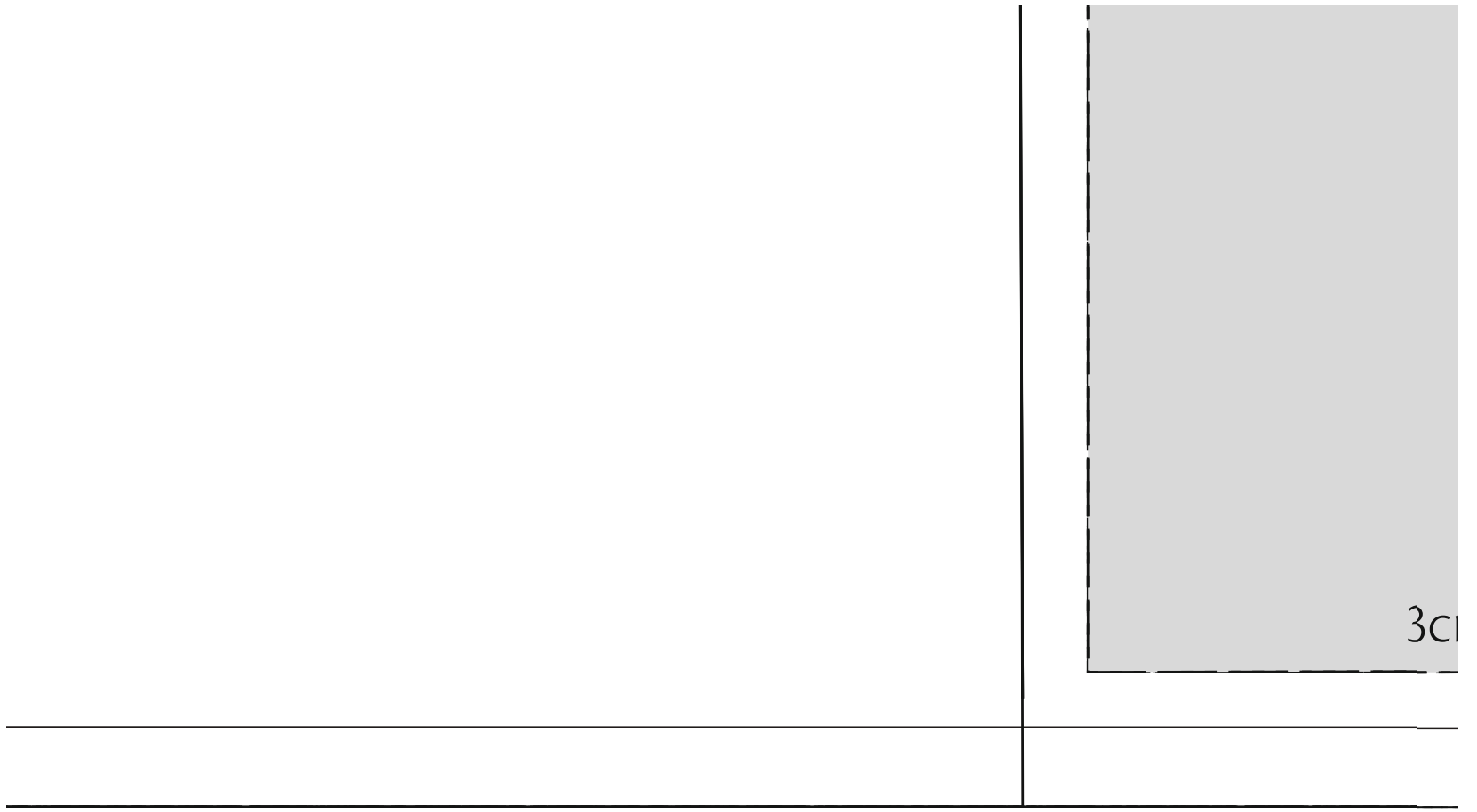


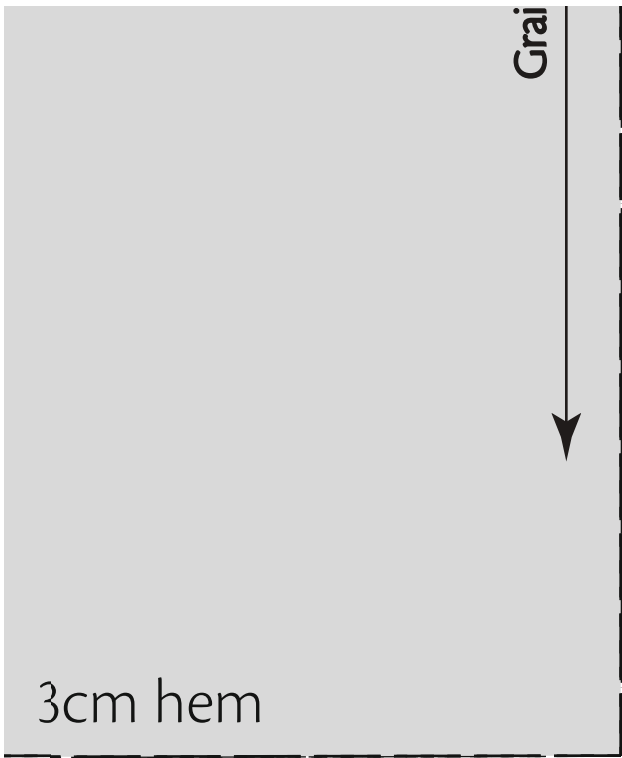


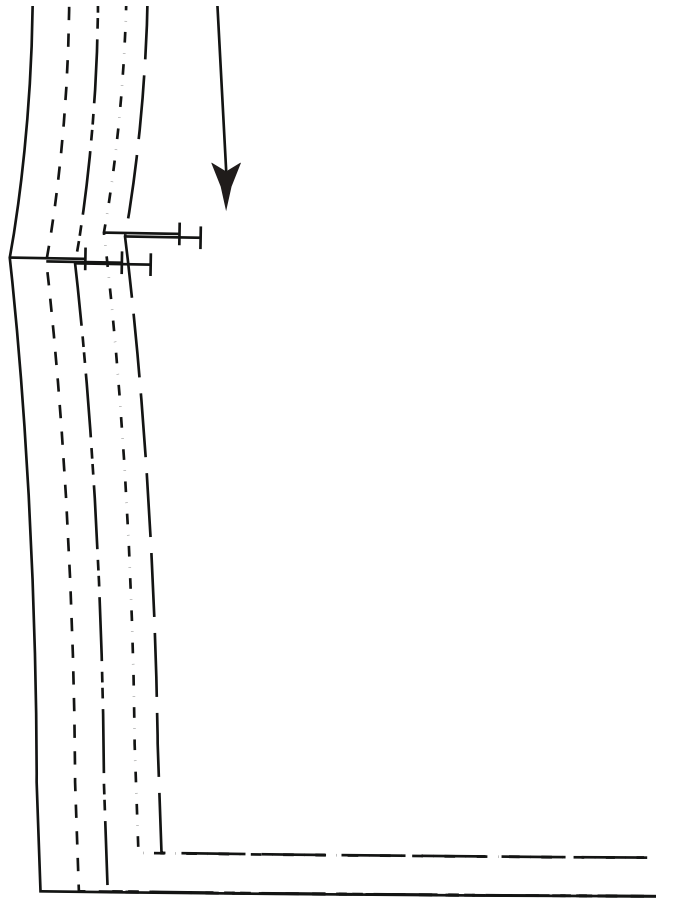
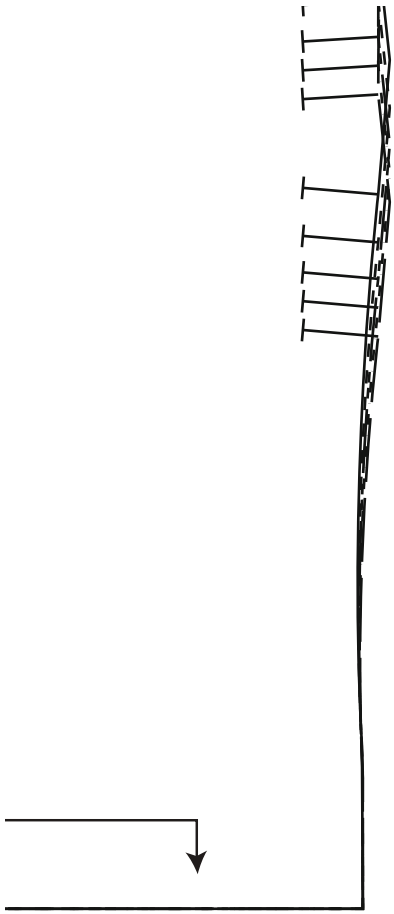
3cm hem

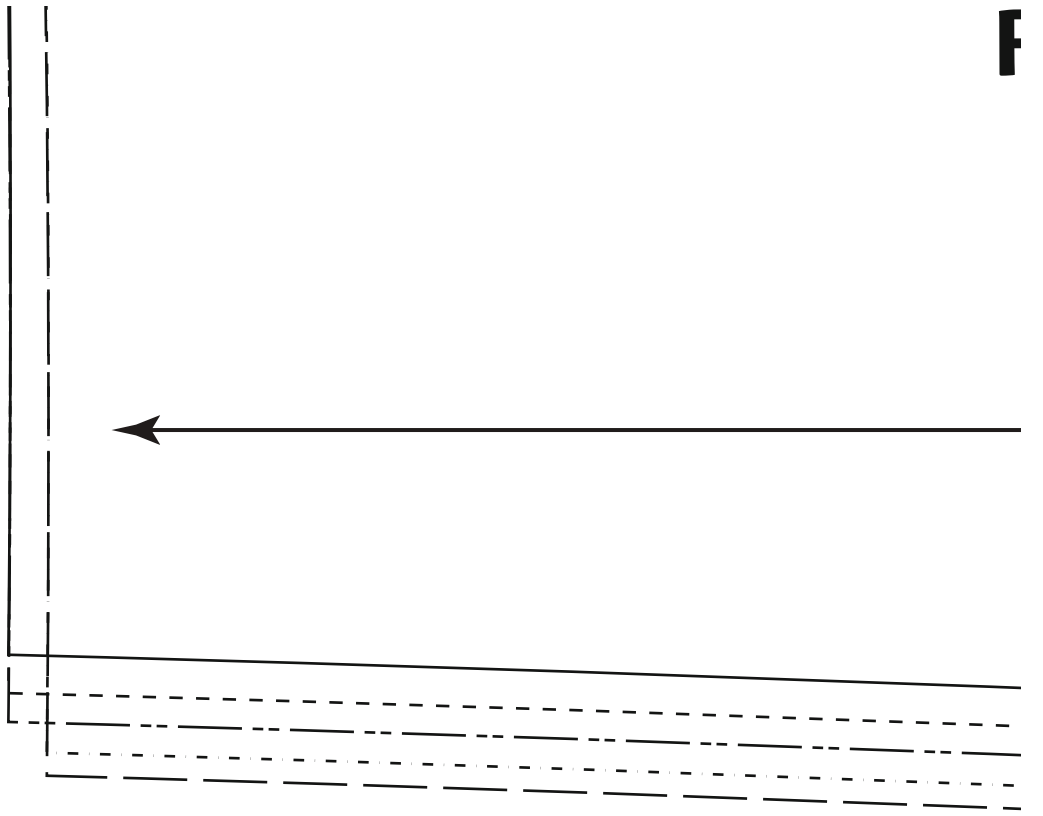
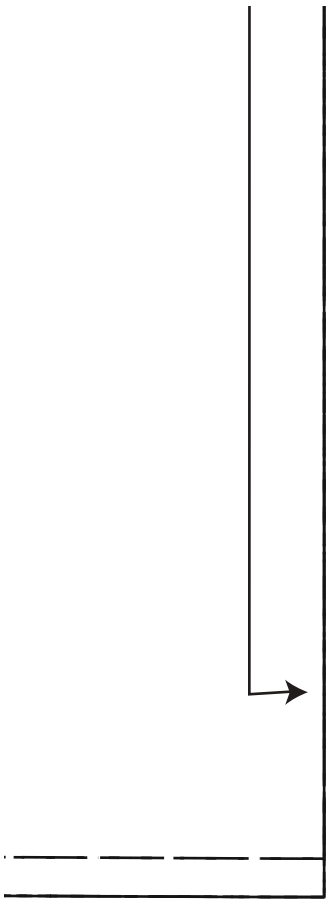
Fold Line













# Front Side Panel

Cut two pairs

Grain Line

