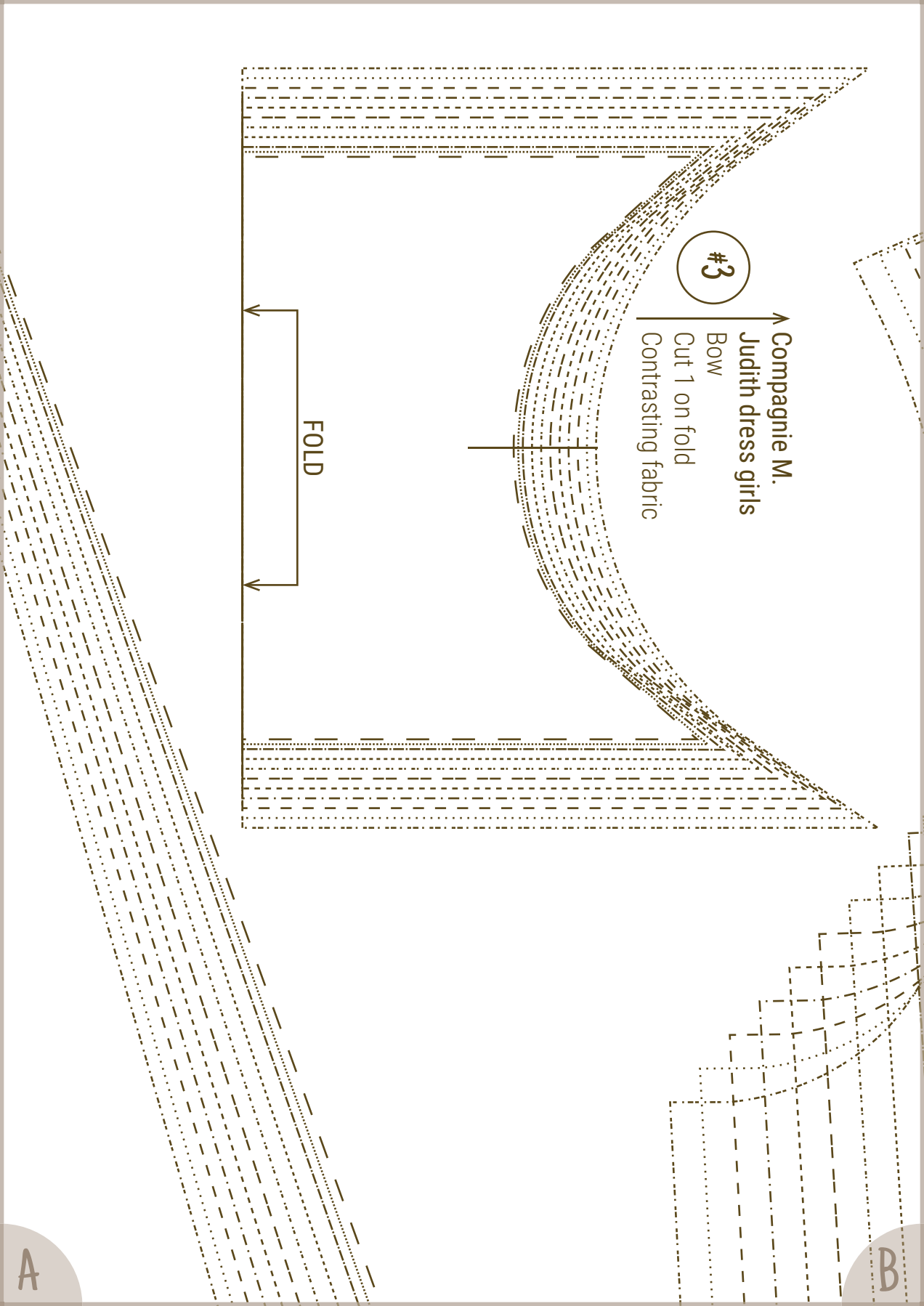


#2

↑ **Compagnie M.**  
**Judith dress girls**  
Bodice back  
Cut 4 (2 right & 2 left)  
2 x main, 2 x lining fabric



#3

Compagnie M.

Judith dress girls

Bow

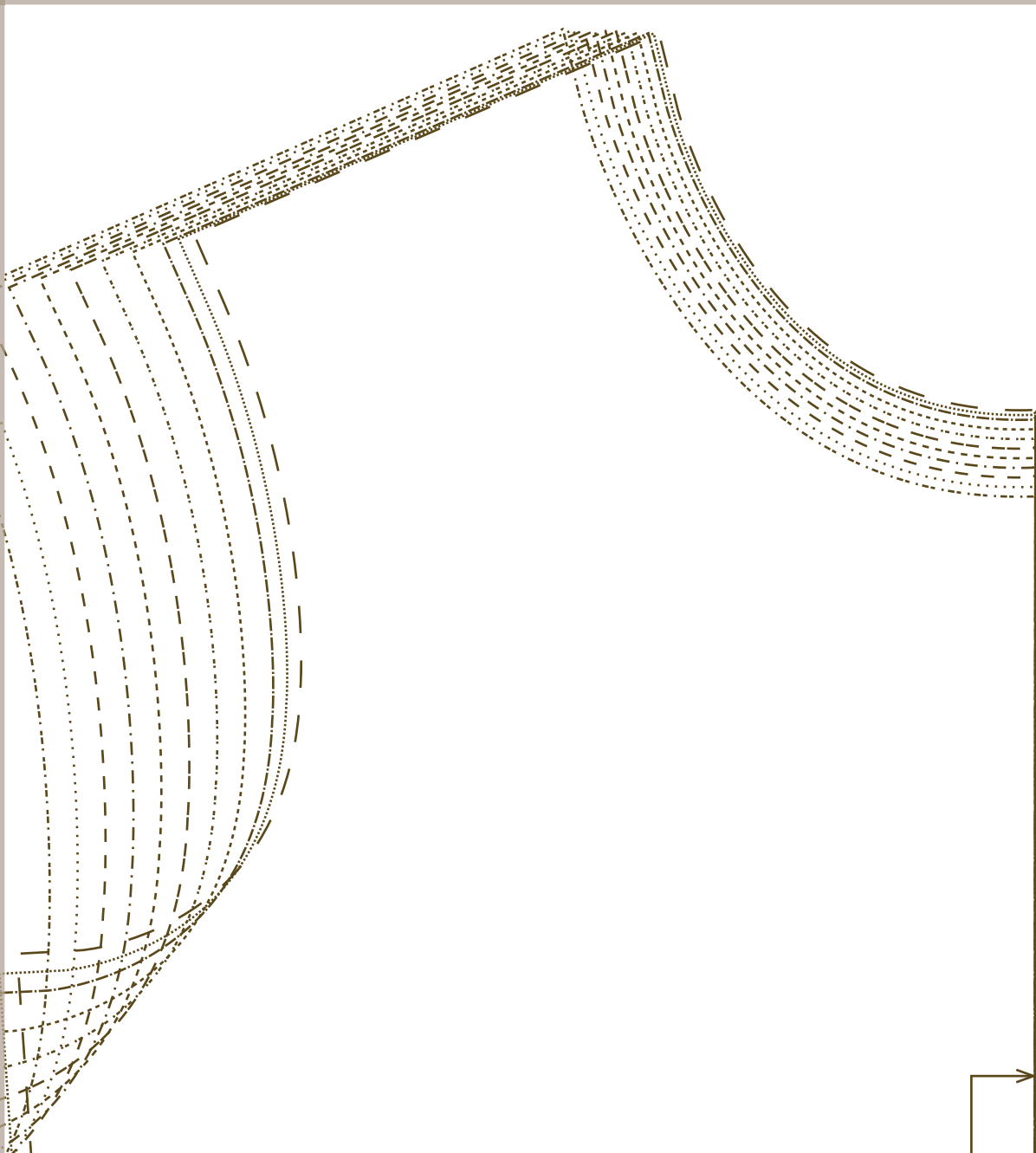
Cut 1 on fold

Contrasting fabric

FOLD

A

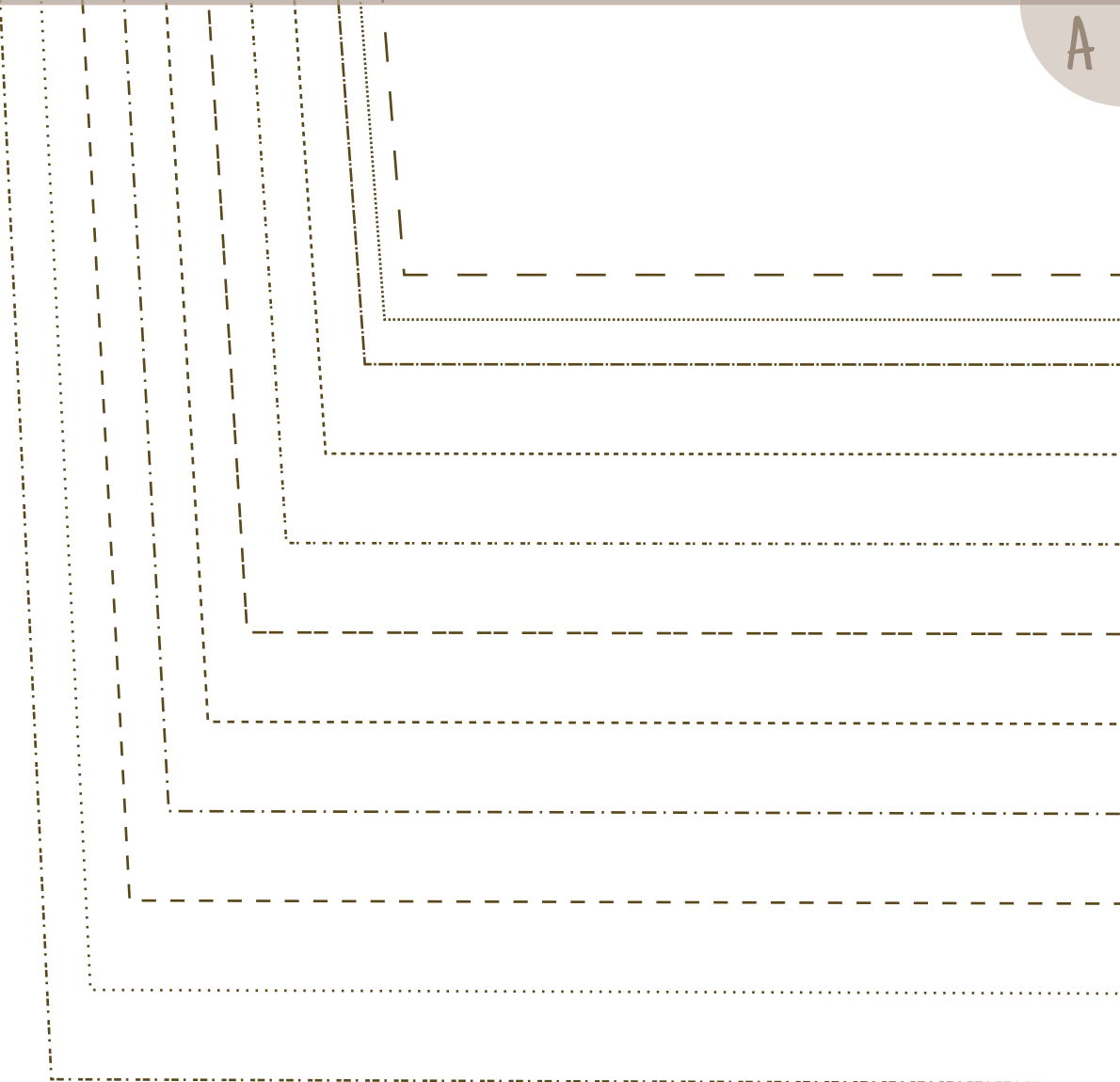
B



#1

↑ **Compagnie M.**  
**Judith dress girls**  
Bodice front  
Cut 2 on fold  
1 x main, 1 x lining fabric

FOLD

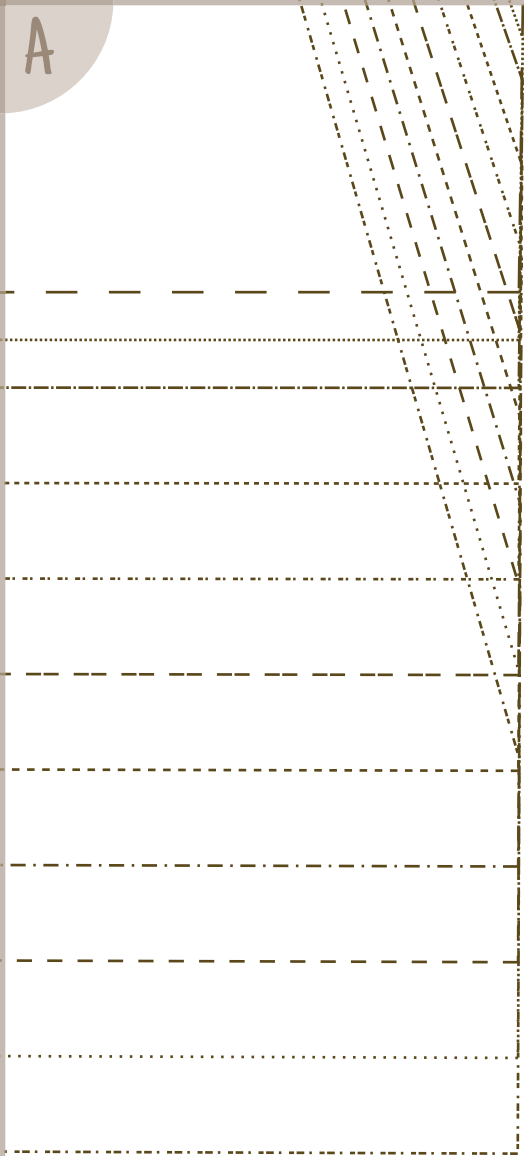


#4

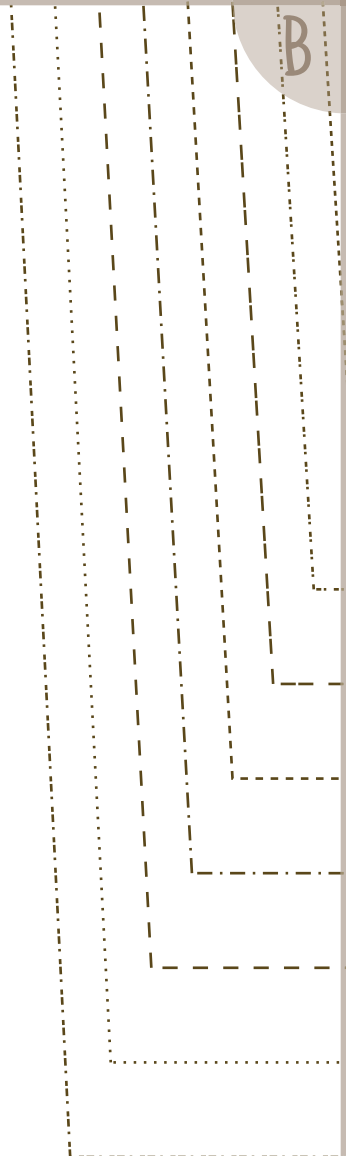
↑ Compagnie M.  
Judith dress girls  
Small bow piece  
Cut 1  
Contrasting fabric



A



B



1Y

18 m

2Y

3Y

4Y

5Y

6Y

7Y

8Y

9Y

10Y

Pattern with seam allowance.  
Patroon met naadwaarde.  
Schnittmuster mit Nahtzugabe.  
Patron avec marge de couture.

2,5 cm  
1 inch  
test square

**M.**

# JUDITH DRESS

1-10y  
girls

Download your English or Dutch instructions on our website:

[www.compagnie-m.com](http://www.compagnie-m.com)

This pattern is for personal use only. All rights reserved. © Compagnie M. 2015