



So Sew Easy

Boho Chic Tunic Tutorial

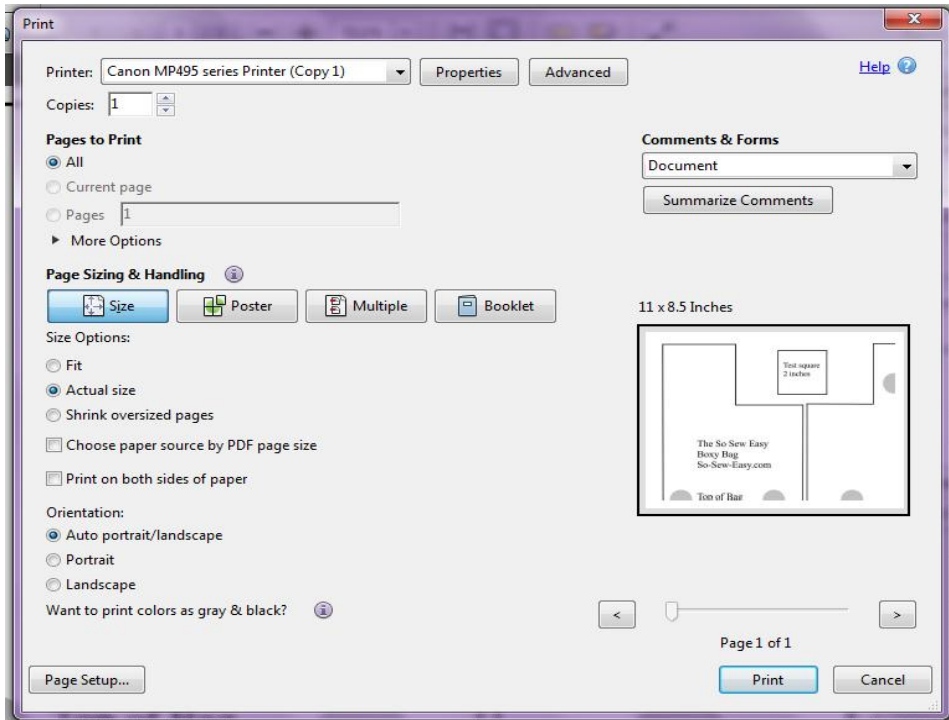
The first time I made this Boho Chic Tunic pattern, I had just turned 15 years old. Originally a dress, I decided to remake and share it with you. For me, it represents freedom which is why I wanted you to have it. I have made the tunic a few times here and there, but I still remember the first time I wore it. I felt free! This is a super easy boho chic tunic. I recommend this project for a first time sewer, young or mature, it doesn't really matter.

You can read more about this pattern over at So Sew Easy [HERE](http://so-sew-easy.com).

Find more great sewing patterns at So Sew Easy – <http://so-sew-easy.com>



To print your PDF pattern



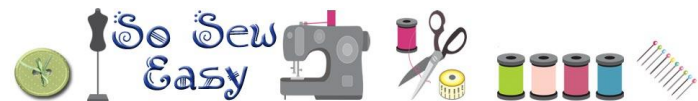
straps on the reverse of your fabric to cut.

Help printing and assembling your pattern

You can find helpful tutorials on how to download, print and assemble PDF sewing patterns here:

[How to download and print a PDF sewing pattern](#)

[How to print and assemble a PDF sewing pattern](#)



Your pattern pieces come at the end of these instructions. For accurate printing, please make sure you are using the latest version of Adobe Reader. You can [download the latest version here](#) if you need to.

Select File → Print and the print dialogue box opens. Under Page Sizing and Handling, select ACTUAL SIZE . Check the preview in the right hand side illustration. Select the page numbers you want to print. You can print the whole document, or just the pattern pieces.

On the edge of the top left page is a box you can use to test your printing. This box should measure 2 inches square. If yours is wildly different you will need to check your printer options to make sure the pages are not being resized.

Use the grey guides on the overlap of the sheets to match up the pattern pieces, folding under or cutting off any overlaps, tape together and cut out your pattern pieces.

Also note that you will need to cut two straps at 4 inches by 22 inches, for which no pattern piece is supplied – it's just a rectangle! You can draw the

Find more great sewing patterns at So Sew Easy – <http://so-sew-easy.com>

Materials

- 2 to 3 yards of [Japanese lawn](#), [voile](#) or silk
- 3/8" to [1/4" elastic](#), enough to go around the shoulders and the sleeves
- thread
- 1 3/4" [lace](#) for the bottom
- 2 yards of [cotton cord](#) or a belt
- sewing machine
- serger (optional)



Find more great sewing patterns at So Sew Easy – <http://so-sew-easy.com>

Directions

1. Cutting the pattern

- Prepare the fabric by washing it and drying it before you cut it. For more [tips on mistake to avoid when cutting fabric](#), please check out our tutorial on the topic.
- There are 21 pages to the pattern.
- Please cut the back on a fold. Cut 2 fronts. There will be a seam on the front.
- Cut 2 sleeves

Finished Garment Measurements

Size	Bust	Waist	Hips
8	36 3/4	36 3/4	43 3/4
10	39	39	46
12	41 1/4	41 1/4	48 1/4
14	43 1/2	43 1/2	50 1/2
16	45 3/4	43 3/4	52 3/4
18	48	48	55
20	50 1/4	50 1/4	57 1/4

Find more great sewing patterns at So Sew Easy – <http://so-sew-easy.com>



2. Making your Boho Chic Tunic



This a very easy tunic to make, the pattern has only 3 pieces and we will start by sewing the sides.

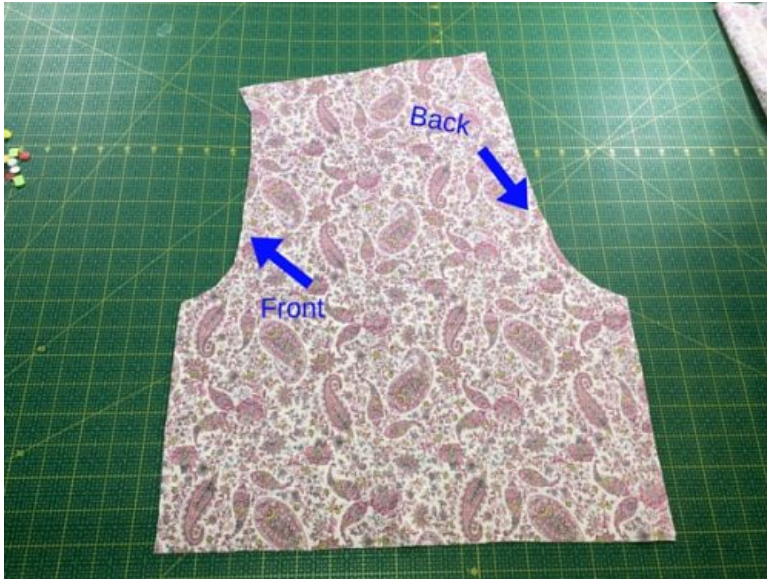
Take the back piece, print side up.

Place the 2 front parts and sew the sides. Use the serger or zig zag to clean the seams and iron the sides.



Find more great sewing patterns at So Sew Easy – <http://so-sew-easy.com>





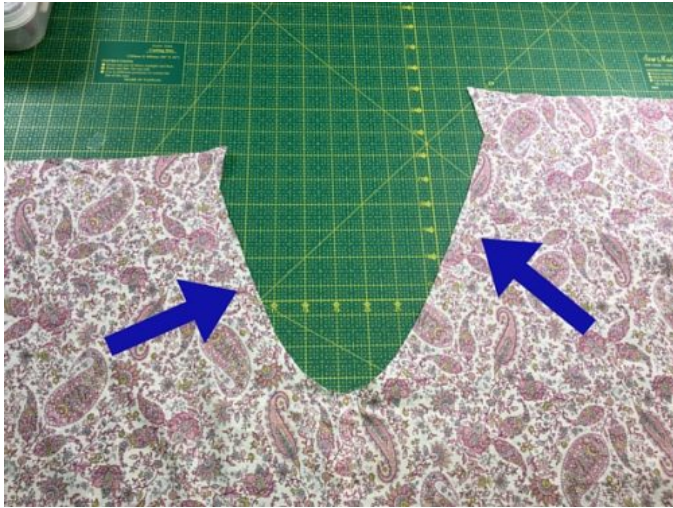
Before we can continue, we have to work on the sleeves. The short side is the front and the high side is back.

Sew the sides of the sleeves and use the serger or zigzag. Iron the seams.



Find more great sewing patterns at So Sew Easy – <http://so-sew-easy.com>





Lay the back and front of the blouse and observe the shape of the arm hole one side is higher than the other.

Place the sleeve print side together and pin the sleeves.

Use the serger or zigzag and iron the seams. Next we will work on the neck.



Find more great sewing patterns at So Sew Easy – <http://so-sew-easy.com>



3. Making the neck of your Boho Chic Tunic



Fold the edge of the neckline to ¼" and iron.

Fold again ½" and iron.



Find more great sewing patterns at So Sew Easy – <http://so-sew-easy.com>



Cut a piece of elastic the size of your shoulders tight enough to hold the tunic up but not so tight that when you lift your arms that the tunic rides up. Pin the elastic to the neck line. This is the quickest way to attach the elastic.

Fold the edge over the elastic and top stitch the edge.



Find more great sewing patterns at So Sew Easy – <http://so-sew-easy.com>





Pull the elastic as you sew. For a better understanding of this technique watch our video on sewing pajama shorts for men where I explain and demonstrate how to do this.

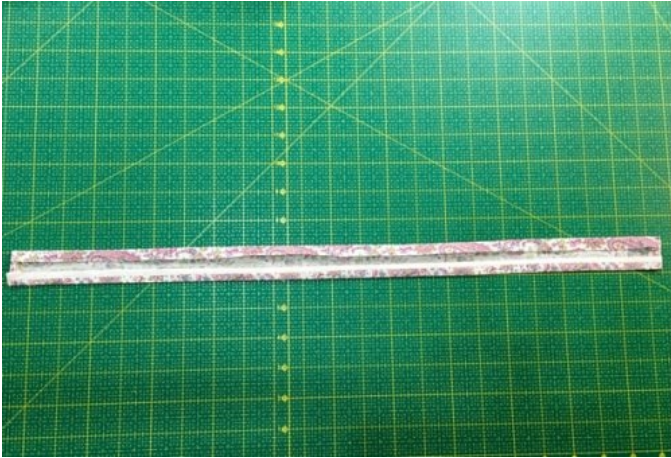
Sew the fronts together and iron the seams open. Leave a small opening to attach a string or ribbon as a closer.



Find more great sewing patterns at So Sew Easy – <http://so-sew-easy.com>



4. Making the waist



The next step is making a casing for the belt or cord for the tunic and it is optional. However, I would suggest doing it to stop the belt or cord of the tunic from riding up. Cut a strip that will become the casing of 2" x 18", fold the edges 1/4" and iron. Pin the casing to the back where the waist is and sew at 1/8" seam from the edge.



Find more great sewing patterns at So Sew Easy – <http://so-sew-easy.com>

5. Finishing the sleeves



Lastly, attach the elastic to the sleeves in the same manner you did the neck. Fold the edge of the sleeve at $\frac{3}{8}$ " and iron.

Pin the elastic and fold another $\frac{1}{2}$ ", and sew very close to the edge.



Find more great sewing patterns at So Sew Easy – <http://so-sew-easy.com>





Find more great sewing patterns at So Sew Easy – <http://so-sew-easy.com>

6. Finishing the hem and lace



All that remains is to fold 1/4" and iron.

Pin and sew the lace to the hem and iron the entire tunic.



Find more great sewing patterns at So Sew Easy – <http://so-sew-easy.com>

Thank you for downloading this pattern and tutorial. I hope you enjoyed making this project and remember that I love to see what you made so do upload your completed projects to the pattern page on Craftsy.

Keep up with all the latest news and sewing projects at [So Sew Easy](#).

We also have a really great sewing chat group where you can ask questions, share your completed projects, and get 24 hr sewing inspiration. It's not just for So Sew Easy projects – you can chat about all sewing there, whether a newbie just starting out, or an advanced and experienced sewer, there's something for everyone in the sewing chat group. Join us here.

[SEWING CHAT GROUP](#)

For the latest list of both free and paid patterns available, pop on over to [my designer page at Craftsy](#).

This pattern graphic, the photos and the instructions are copy right Mayra Cecilia Morales at So Sew Easy. Please do not copy, publish, sell, redistribute or alter them in any way. Please don't print and give to your friends, or send it to anyone by email. Please do not rebrand this work as your own and sell or give it away, even if altered. This is intended for your personal use. If you would like to recommend these instructions, please pass on the original download link at So Sew Easy. Thank you for your understanding.

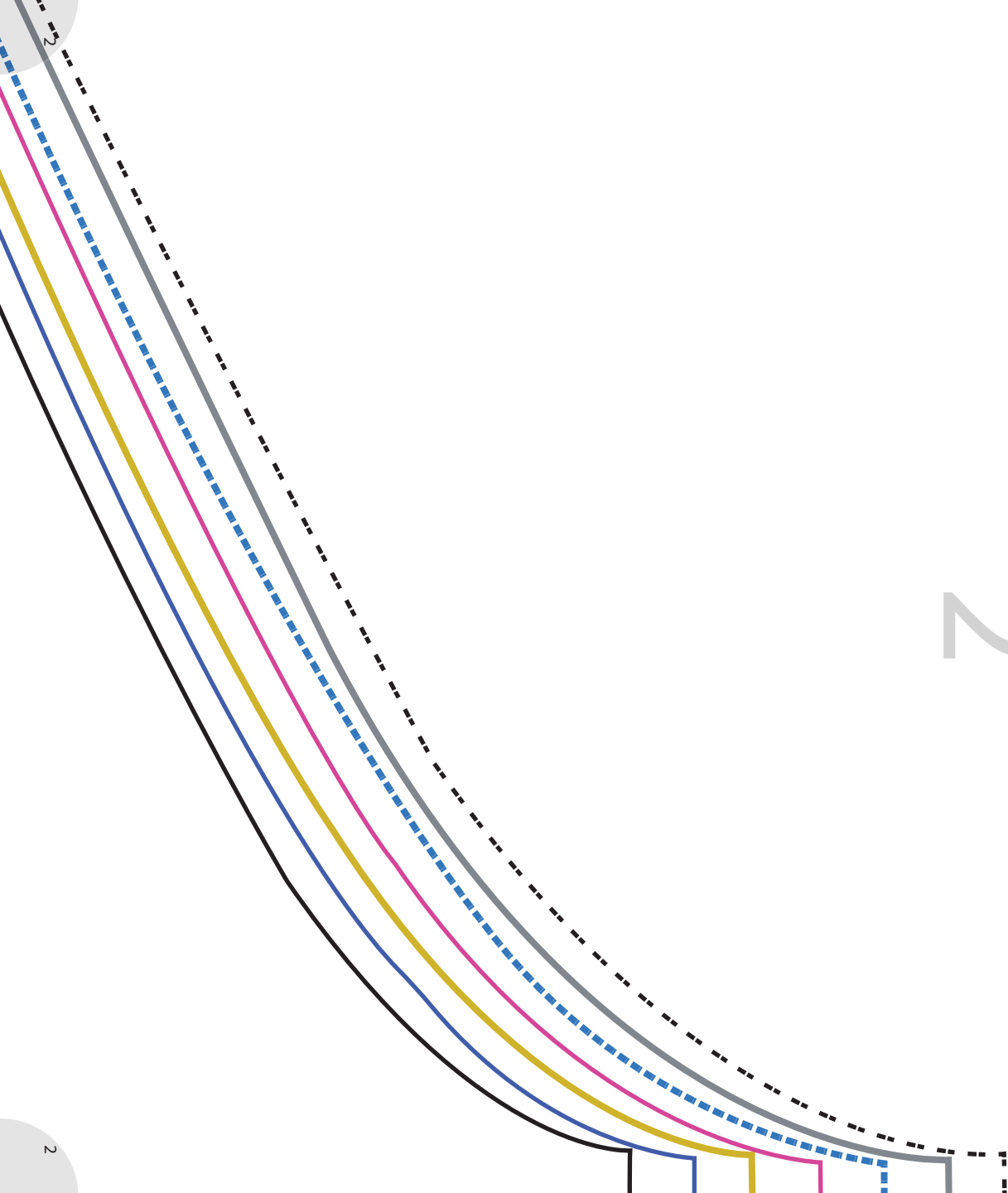
Usage – you ARE allowed to use this pattern to make things to sell on a small handmade basis, such as for craft fairs and for your Etsy shop. However, it may not be used for larger scale commercial purposes without a commercial licence.

Find more great sewing patterns at So Sew Easy – <http://so-sew-easy.com>

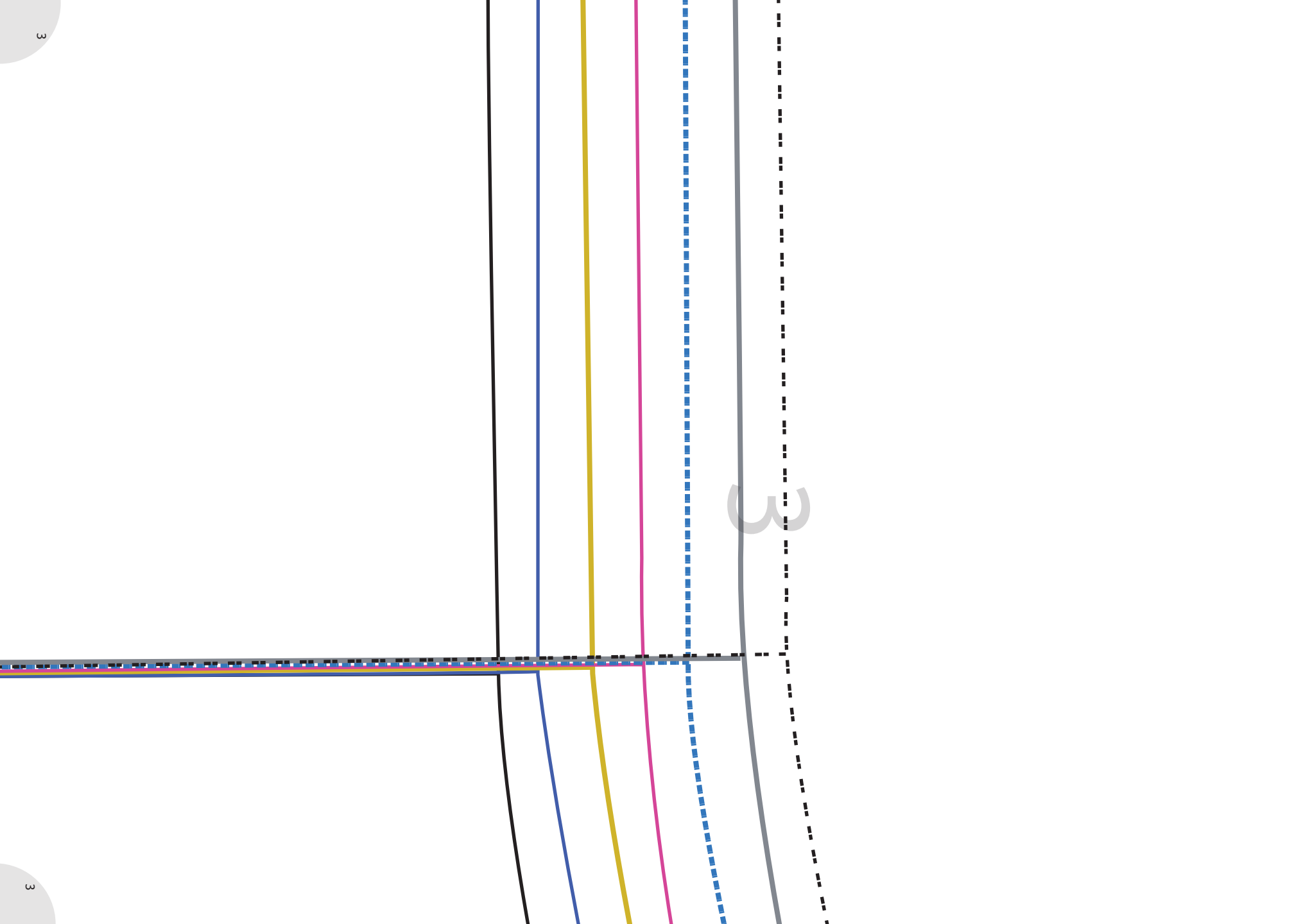


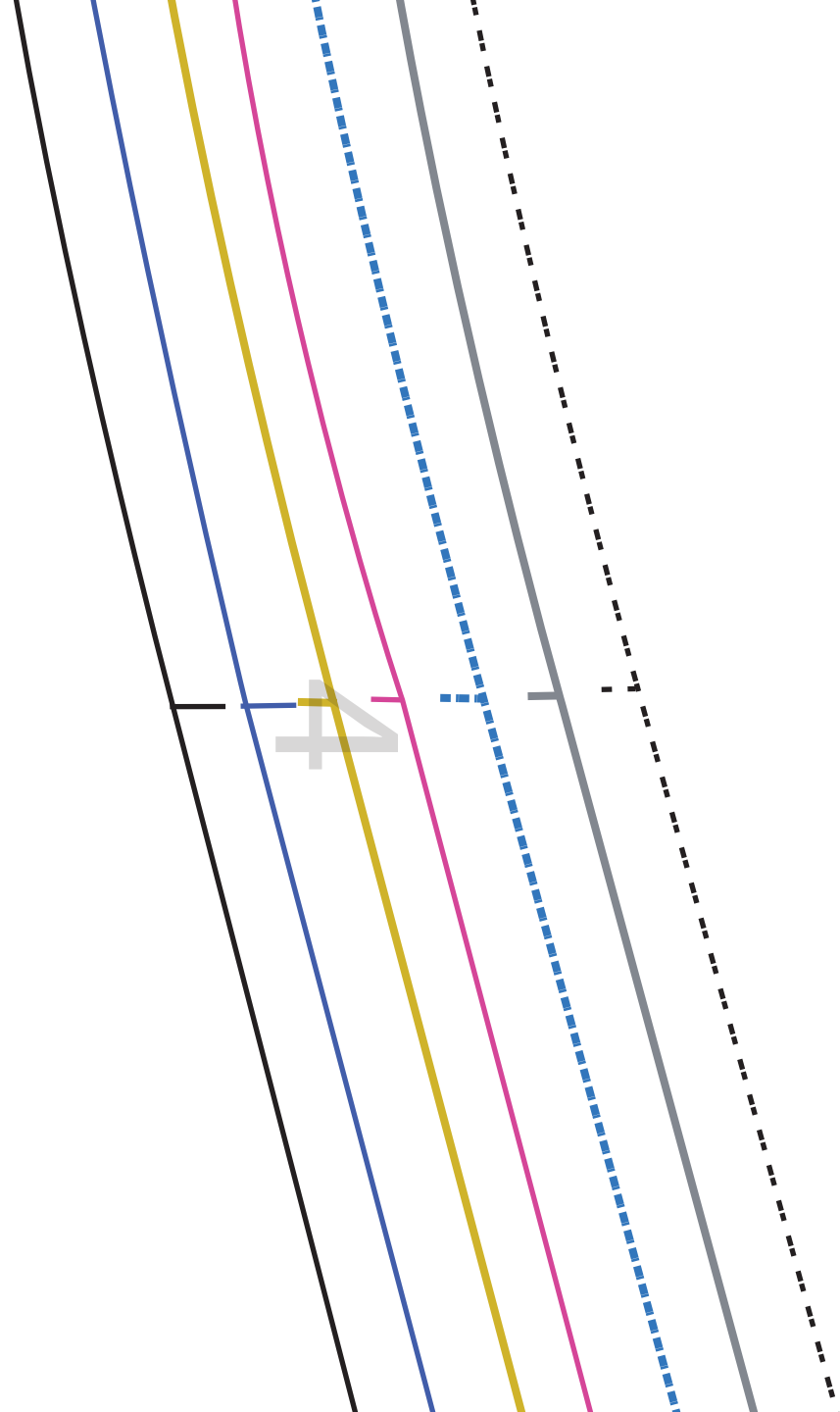
2" x 2" Square Test
Copyright 2016@
So-Sew-Easy.com

1



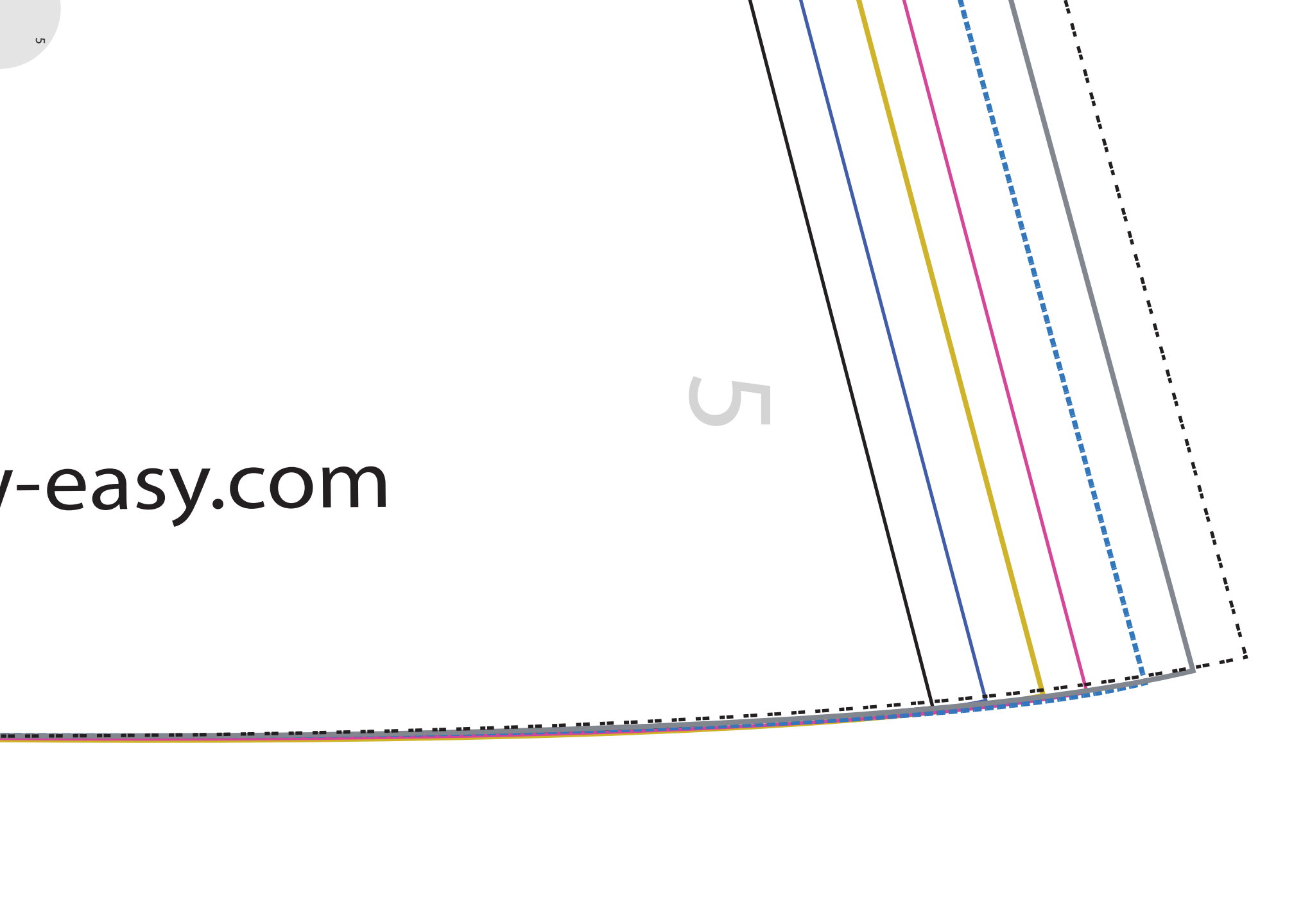
2

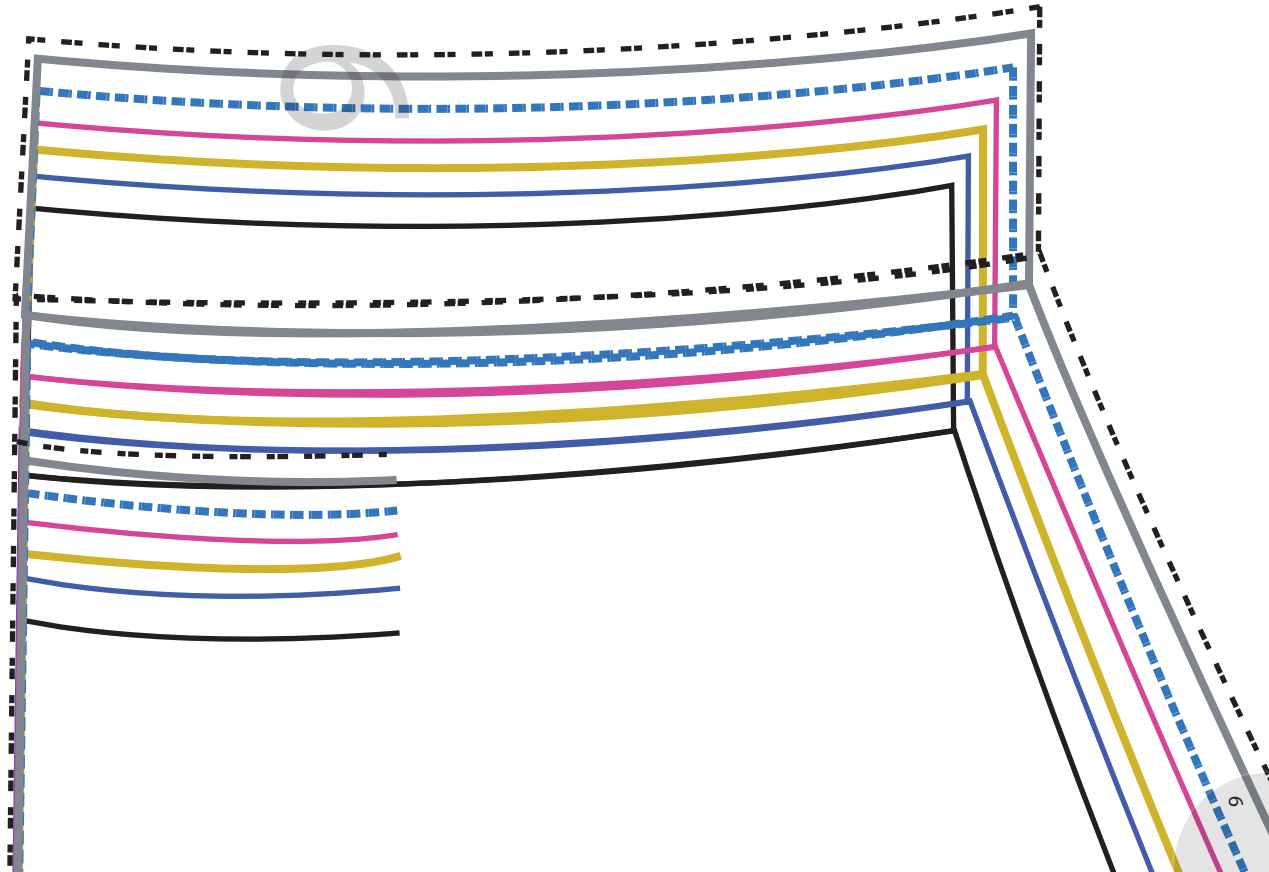
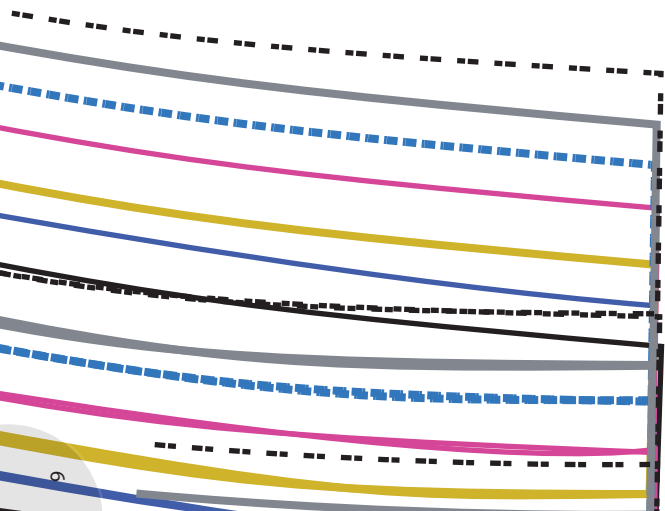


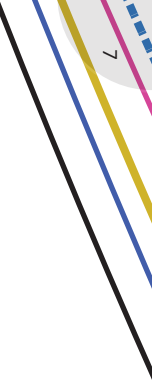
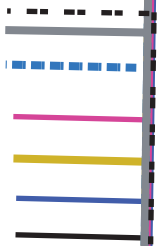
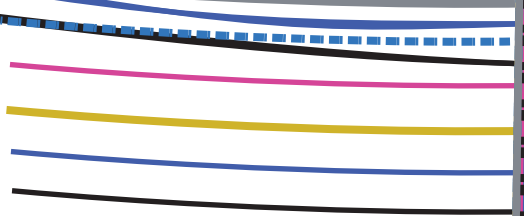


v-easy.com

5







8

Size 8



Size 10



Size 12



Size 14



Size 16



Size 18



Size 20

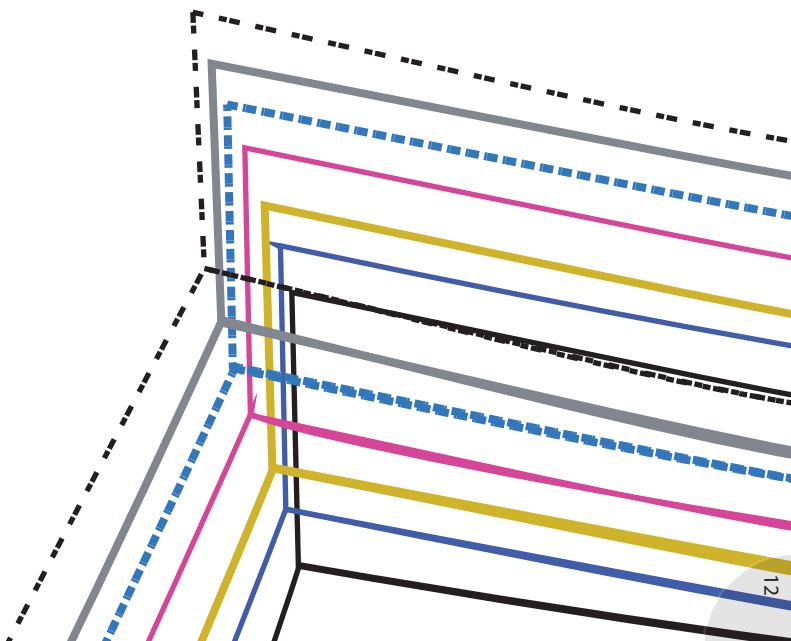


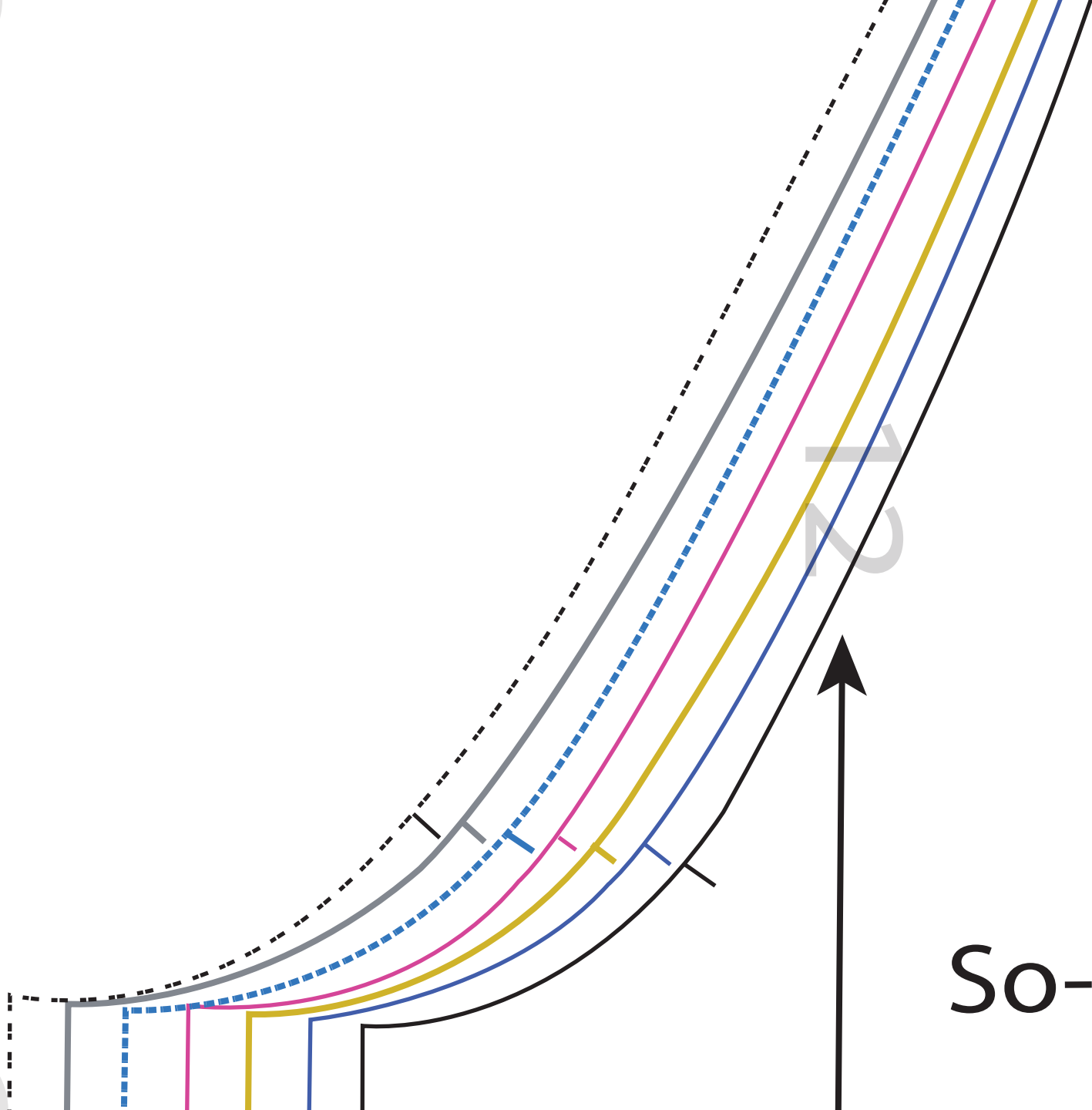


10

So-Sew

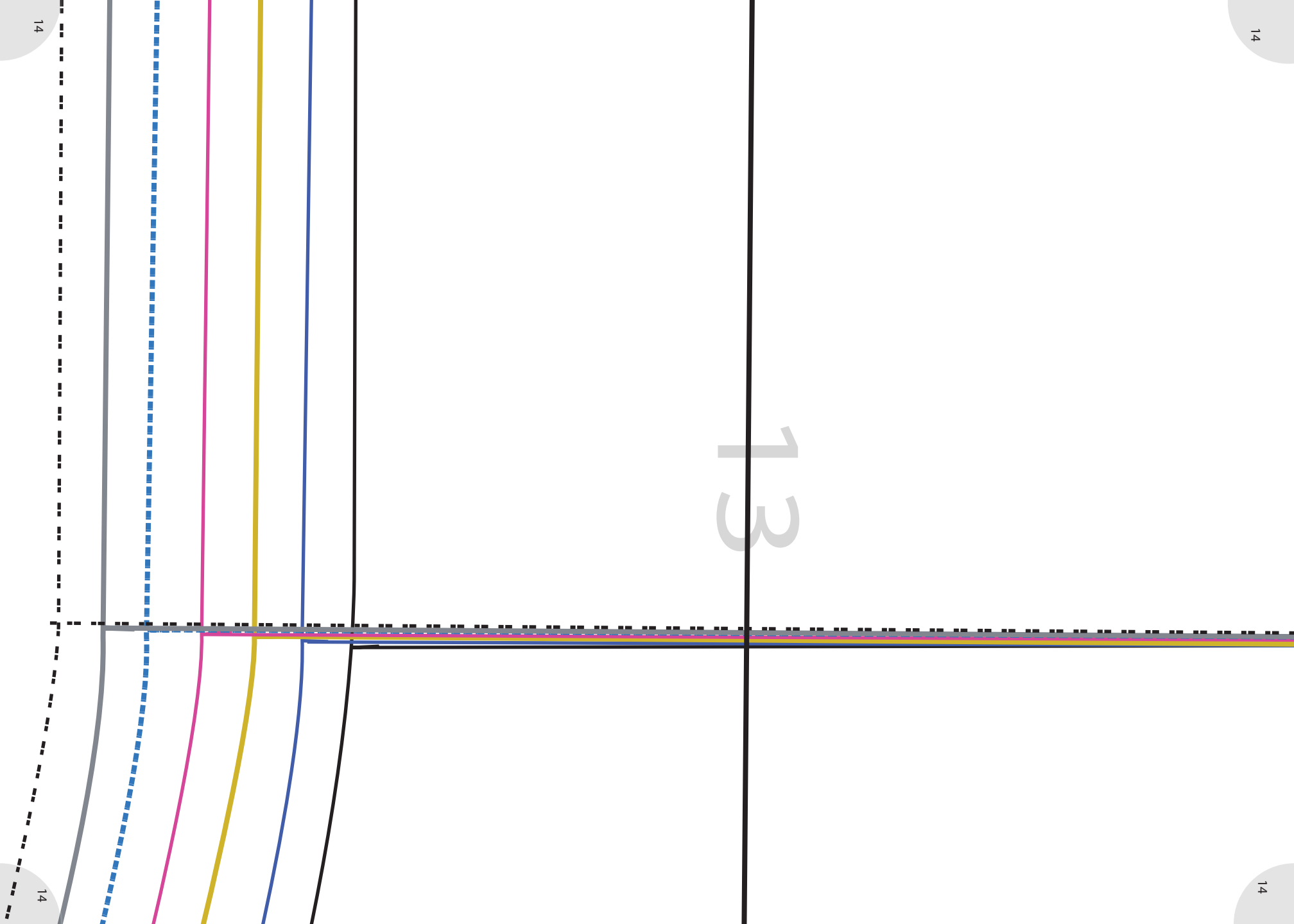
11

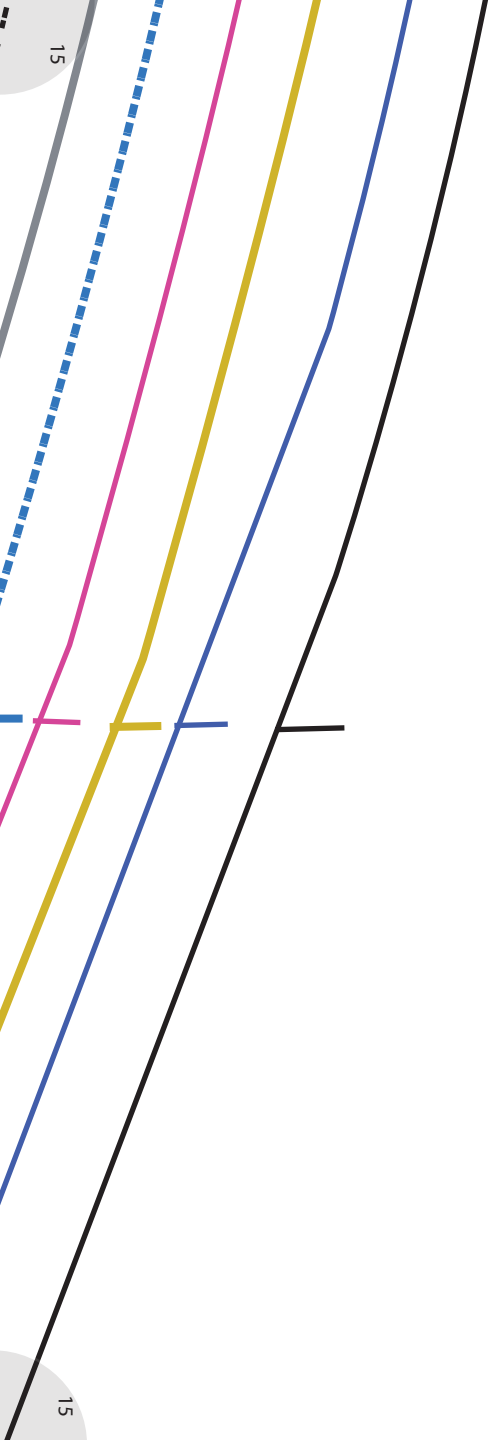




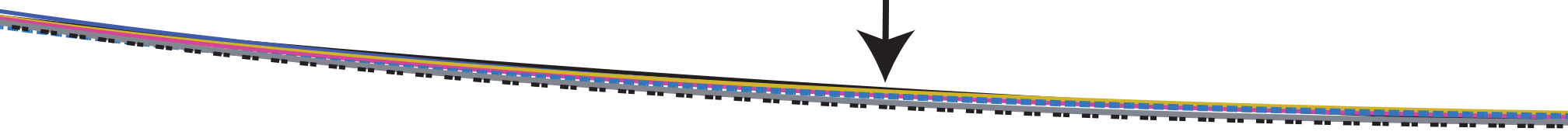
So-Sew-easy

13





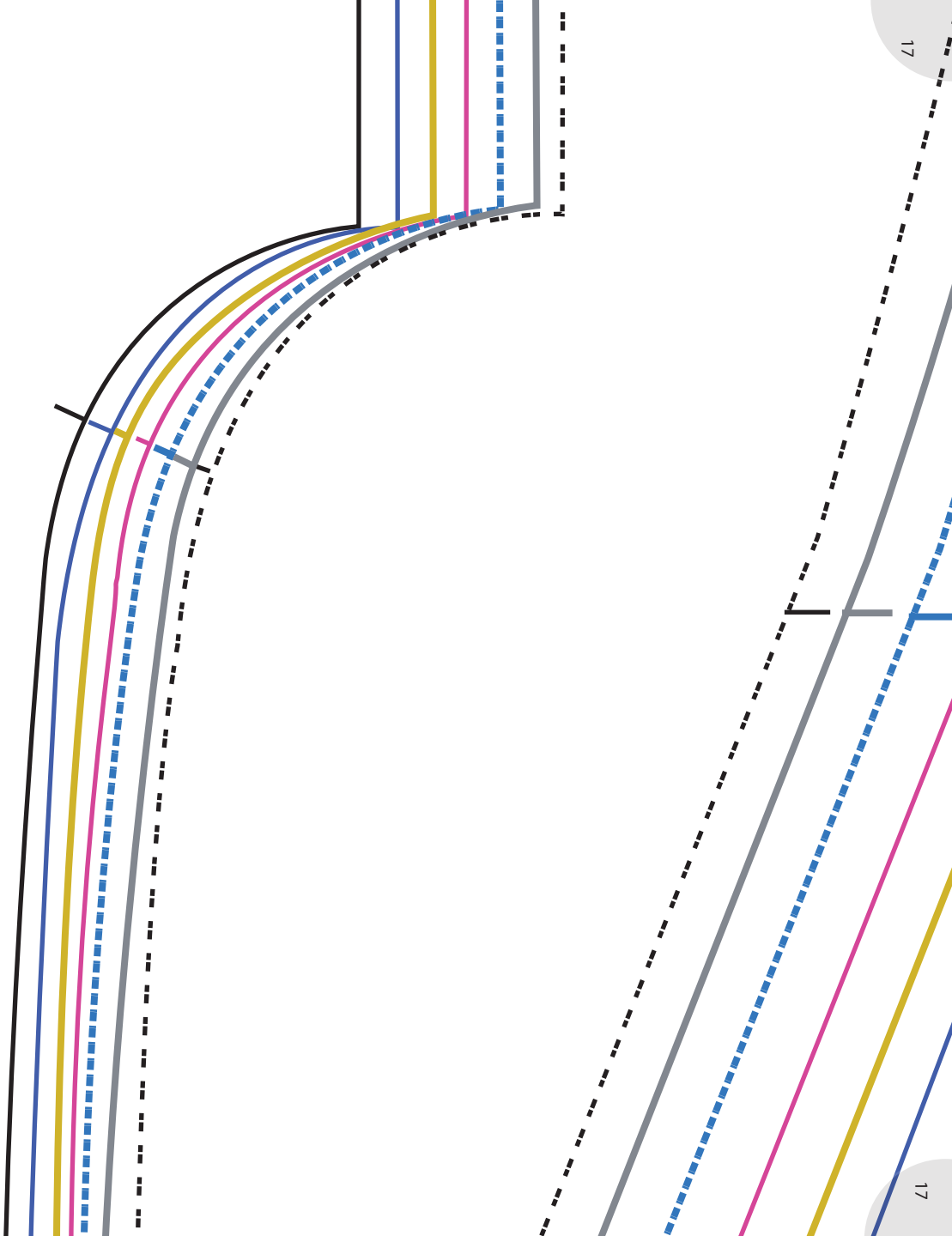
14



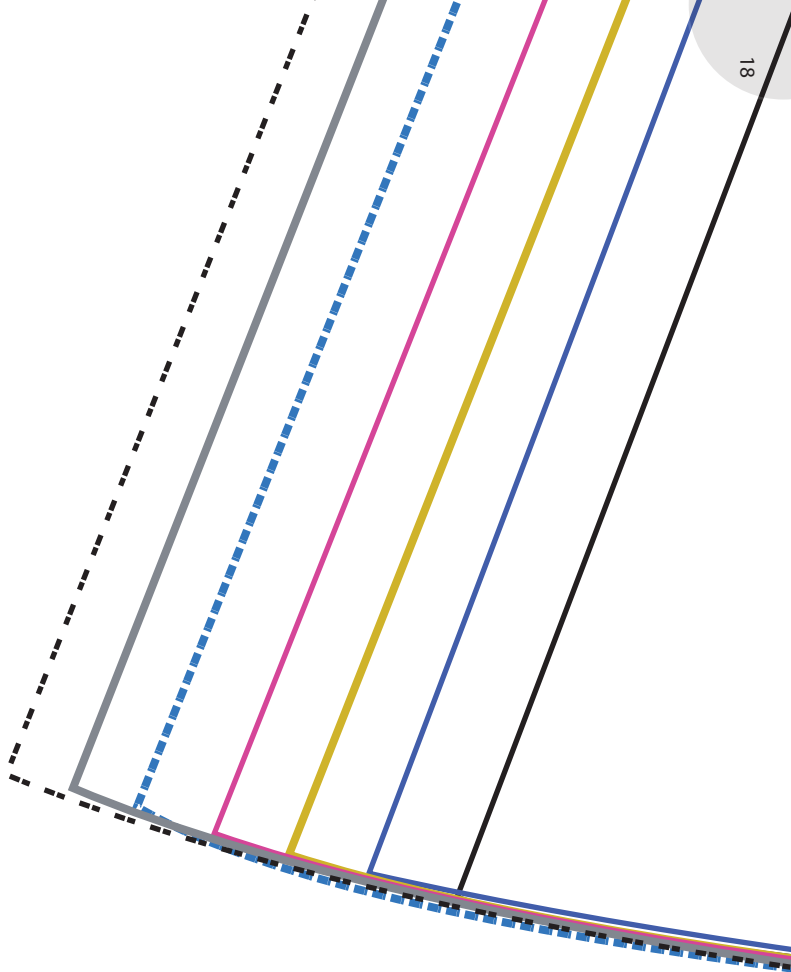
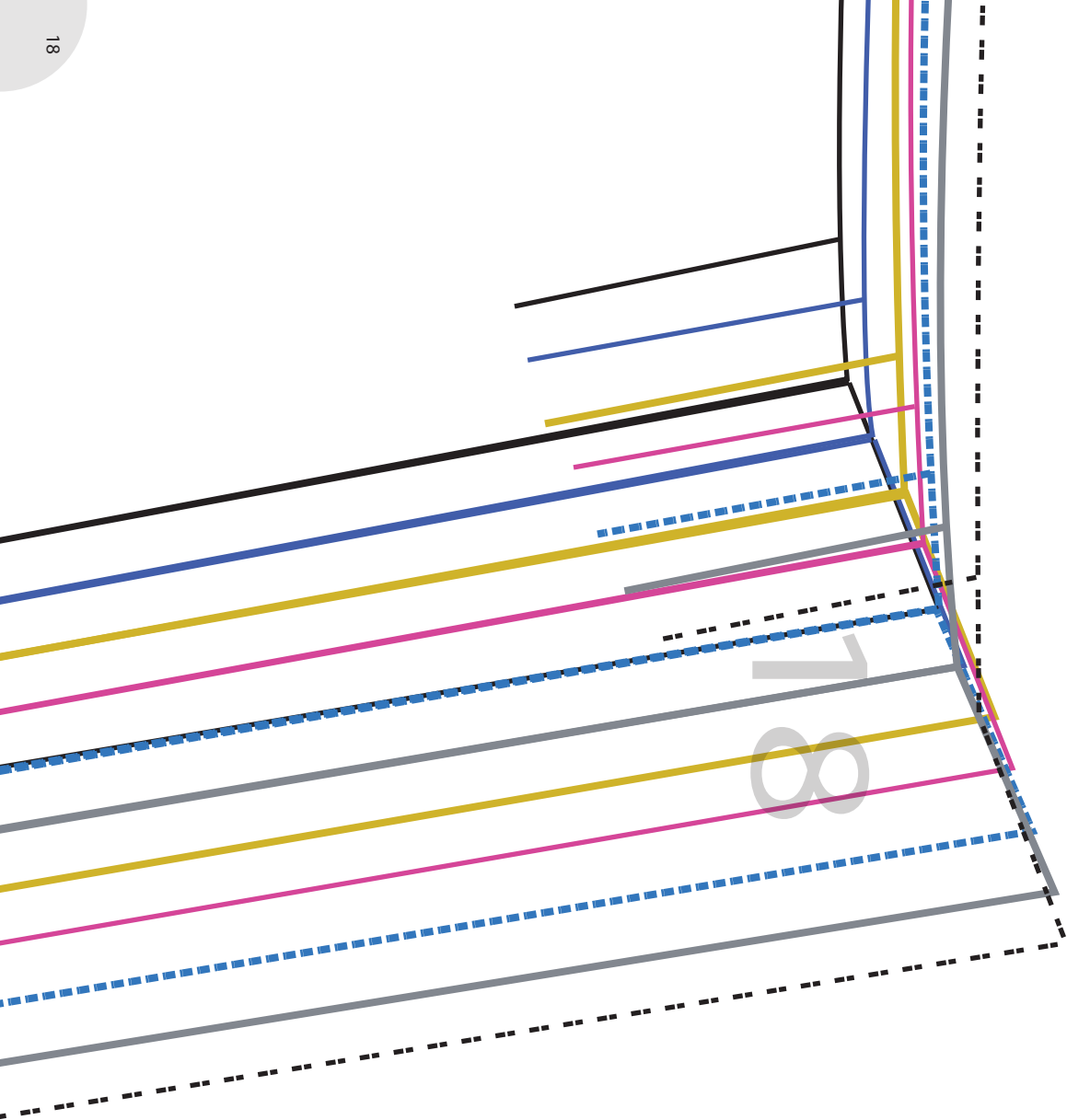
15

So-Sew-Easy.com

16



17



19



20

