



## So Sew Easy

# Perfect Beach Dress Tutorial

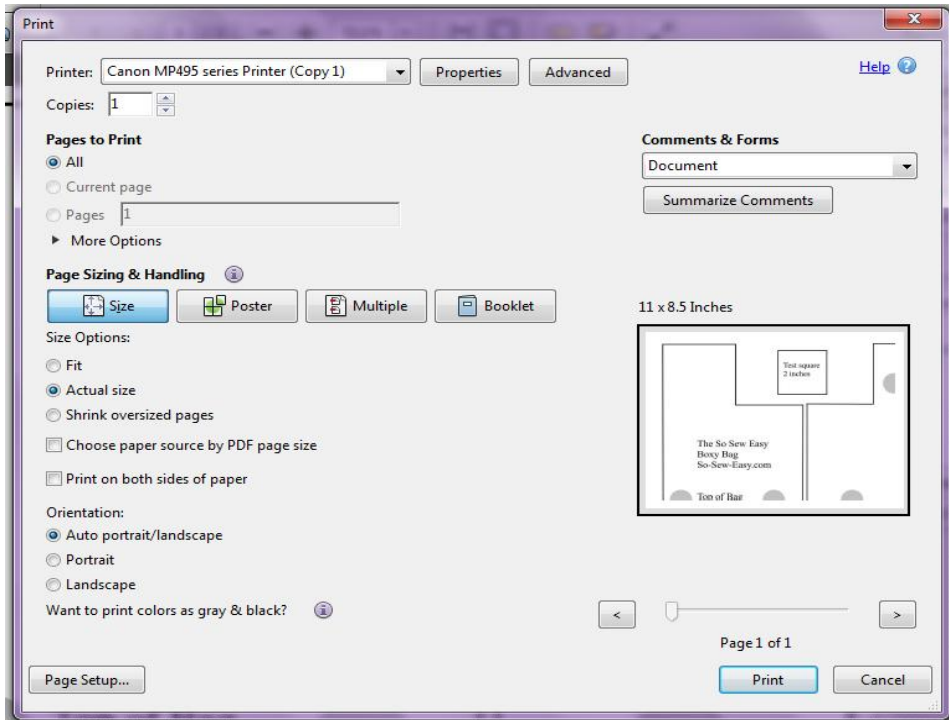
The Perfect Beach Dress is an A-line dress, meant to be worn over your swimsuit and it falls above the knee. I have made this dress for myself in a few colors. It's my "go to" dress when I come back from the beach and I need to swing by the store or stop for a quick dinner before going home. It's the perfect beach dress to walk back from the pool to your cabin on a cruise or for sitting under the thatched roof of a beach bar. It truly is very easy to make, even my mother had one.

You can read more about this pattern over at So Sew Easy [HERE](#).

Find more great sewing patterns at So Sew Easy – <http://so-sew-easy.com>



## To print your PDF pattern



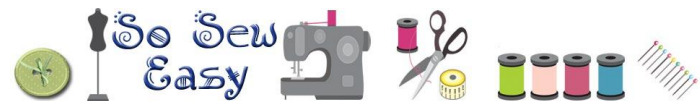
straps on the reverse of your fabric to cut.

## Help printing and assembling your pattern

You can find helpful tutorials on how to download, print and assemble PDF sewing patterns here:

[How to download and print a PDF sewing pattern](#)

[How to print and assemble a PDF sewing pattern](#)



Your pattern pieces come at the end of these instructions. For accurate printing, please make sure you are using the latest version of Adobe Reader. You can [download the latest version here](#) if you need to.

Select File → Print and the print dialogue box opens. Under Page Sizing and Handling, select ACTUAL SIZE . Check the preview in the right hand side illustration. Select the page numbers you want to print. You can print the whole document, or just the pattern pieces.

On the edge of the top left page is a box you can use to test your printing. This box should measure 2 inches square. If yours is wildly different you will need to check your printer options to make sure the pages are not being resized.

Use the grey guides on the overlap of the sheets to match up the pattern pieces, folding under or cutting off any overlaps, tape together and cut out your pattern pieces.

Also note that you will need to cut two straps at 4 inches by 22 inches, for which no pattern piece is supplied – it's just a rectangle! You can draw the

Find more great sewing patterns at So Sew Easy – <http://so-sew-easy.com>

## Materials

- 2 to 2.5 yards of fabric of your choice not too thick and with good drapability. Here are some fabric options: [Batik turtles](#), [Batik stars](#), and [Challis black](#)
- 2 yards of 2" bias tape. [I made my own](#).
- thread to match
- a 2" [wooden](#) or [plastic](#) ring
- clear plastic strap slider adjusters. I used [these](#).
- sewing machine
- zipper foot (optional)

## Finished Garment Measurements

Size	Chest	Hemline
XXS	39"	59"
XS	40.5"	60.5"
S	41.5"	61.5"
M	43.5"	63.5"
L	45.5"	65.5"
XL	48"	68"
XXL	52"	72"

Find more great sewing patterns at So Sew Easy – <http://so-sew-easy.com>



## 1. Cut the pattern

You will need to sew three pieces of fabric.

Cut two of the back and one of the front on the fold.

## 2. Sewing the Perfect Beach Dress



Use a French seam to sew the two back pieces together, then sew the sides.

If you are not using a French seam, keep your seam allowance at 5/8”.



Find more great sewing patterns at So Sew Easy – <http://so-sew-easy.com>





### 3. Making your bias tape



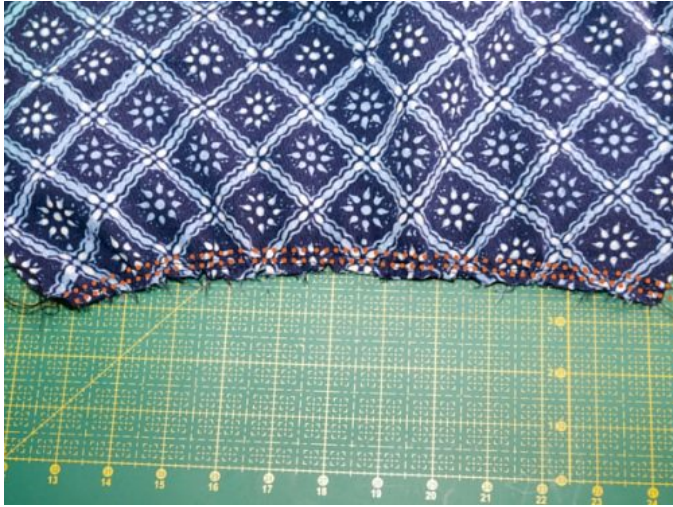
We're going to use bias tape in two parts of the dress –along the front neckline and back which will also then form the straps of the dress. We'll start with front neckline.

The fabric I am using is hand dyed and beautiful, so I decided to use the same fabric and make my own bias tape. With this design the bias tape actually becomes the straps for the dress, so an attractive choice of fabric is important. If you want to do the same, please check out our tutorial on *making continuous bias binding tape*.

Find more great sewing patterns at So Sew Easy – <http://so-sew-easy.com>



#### 4. Apply bias tape to the front neckline



Gather or make tiny darts to reduce the neckline to 10 inches for sizes XXS, XS and S. To 12 inches for M, L and to 13 inches for XL and XXL. To gather the neckline sew a straight stitch at 1/4" from the edge. Sew another beside that stitch at another 1/4" further in. Then pull both of the bobbin threads to gather the fabric. For more guidance on quick and easy gathering, please check out our tutorial.



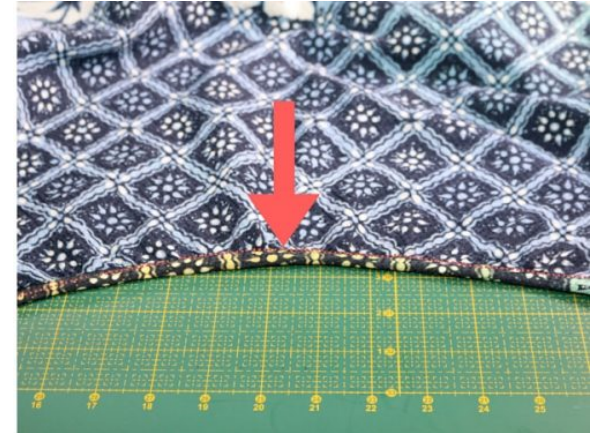
Find more great sewing patterns at So Sew Easy – <http://so-sew-easy.com>



Start on the right side of the fabric and pin the bias tape on the right side of the fabric.

Trim the seam allowance by half to reduce the bulk of the fabric.

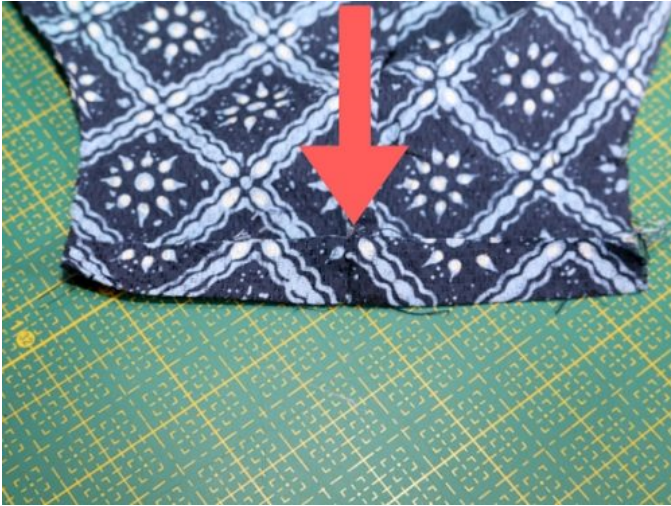
Fold the bias tape and sew again on the right side of fabric.



Find more great sewing patterns at So Sew Easy – <http://so-sew-easy.com>

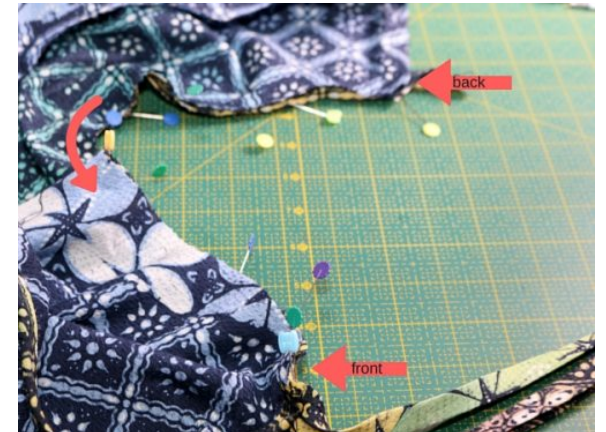
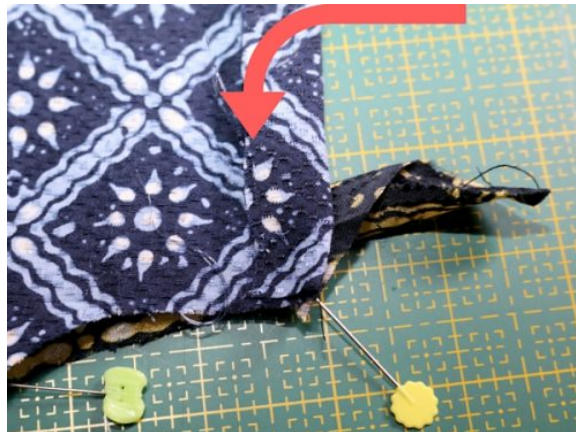


## 5. Attach the bias tape straps



Start by folding the top edge of fabric and iron it.

Pin the long strip of bias tape from the back where the ring will be located. and continue to pin all the way to the front.

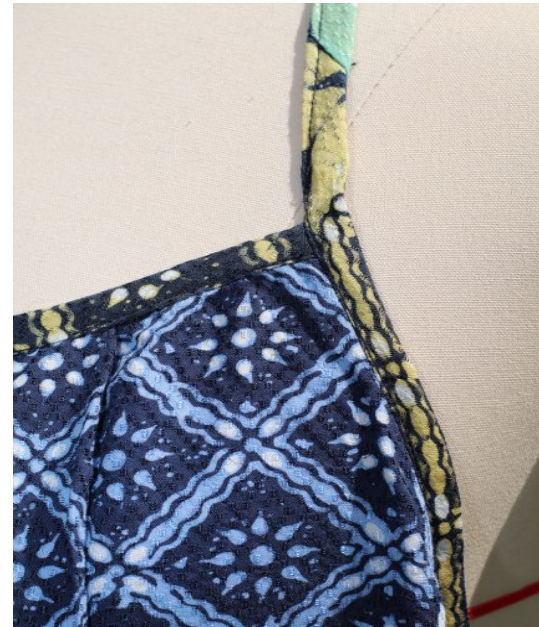


Find more great sewing patterns at So Sew Easy – <http://so-sew-easy.com>





The bias tape will become the straps for the dress. Start to sew from the back and continue to sew the whole bias tape transforming the bias tape into the strap for the dress.



Find more great sewing patterns at So Sew Easy – <http://so-sew-easy.com>

## 6. Attach the ring



Before we can finish, we have to attach the ring to the back of the dress.

Thread the fabric through the ring, fold the fabric again another 1/2" and pin the fabric.



Find more great sewing patterns at So Sew Easy – <http://so-sew-easy.com>



Push the fabric to one side and continue pinning the fabric down.

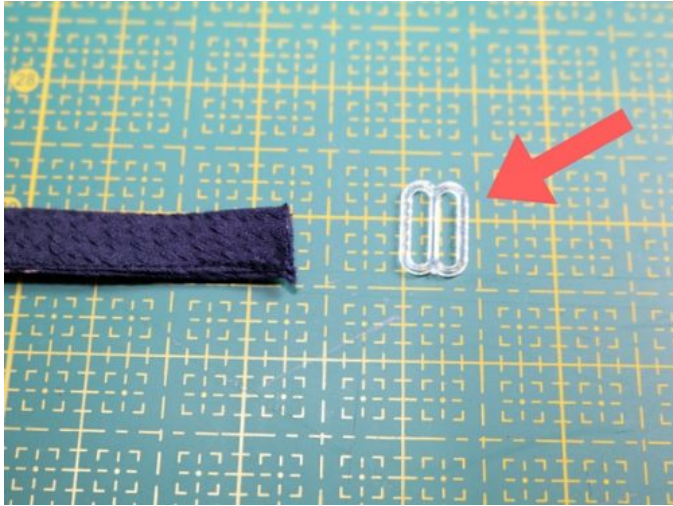
Take it to the sewing machine and sew at 1/8". I found that for this step, it helped to change the foot to a zipper foot to be able to sew closer to the ring. Please give it a try if you have one.



Find more great sewing patterns at So Sew Easy – <http://so-sew-easy.com>



## 7. Finishing the Perfect Beach Dress



Thread the slider under, over and under and slide it to the front.

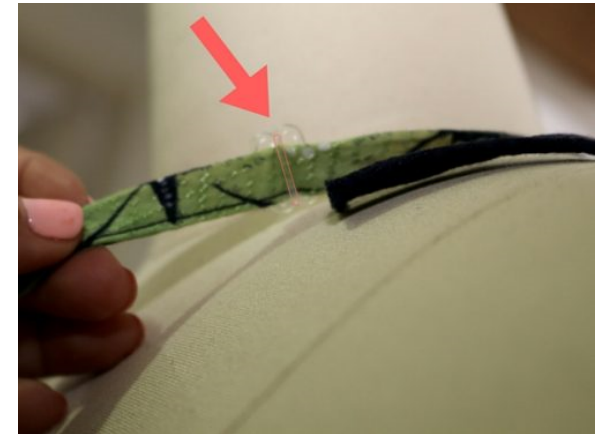


Find more great sewing patterns at So Sew Easy – <http://so-sew-easy.com>





Then thread the strap over the ring through the hole and under the bar of the slider.





This step is easier if you pull the fabric up. Then threading the strap under the slider is easier to do.

Fold the end of the strap to hide the raw edge and sew it down by hand or sewing machine.



Find more great sewing patterns at So Sew Easy – <http://so-sew-easy.com>





Next will be to make a seam for the hem 5/8" to 1 inch from the edge.

With the help of your seam ripper or tailor's awl, pull the threads out up to the seam to make a frill. This raw edge style seems to be so popular now.



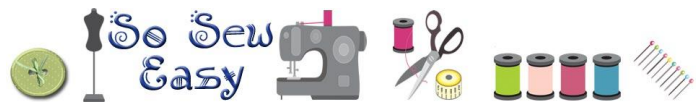
Find more great sewing patterns at So Sew Easy – <http://so-sew-easy.com>





When the raw edge style passes though, you can just cut the treads and hem the dress normally.

You are done. Off to the pool or beach!



Find more great sewing patterns at So Sew Easy – <http://so-sew-easy.com>



Thank you for downloading this pattern and tutorial. I hope you enjoyed making this project and remember that I love to see what you made so do upload your completed projects to the pattern page on Craftsy.

**Keep up with all the latest news and sewing projects at [So Sew Easy](#).**

We also have a really great sewing chat group where you can ask questions, share your completed projects, and get 24 hr sewing inspiration. It's not just for So Sew Easy projects – you can chat about all sewing there, whether a newbie just starting out, or an advanced and experienced sewer, there's something for everyone in the sewing chat group. Join us here.

### **[SEWING CHAT GROUP](#)**

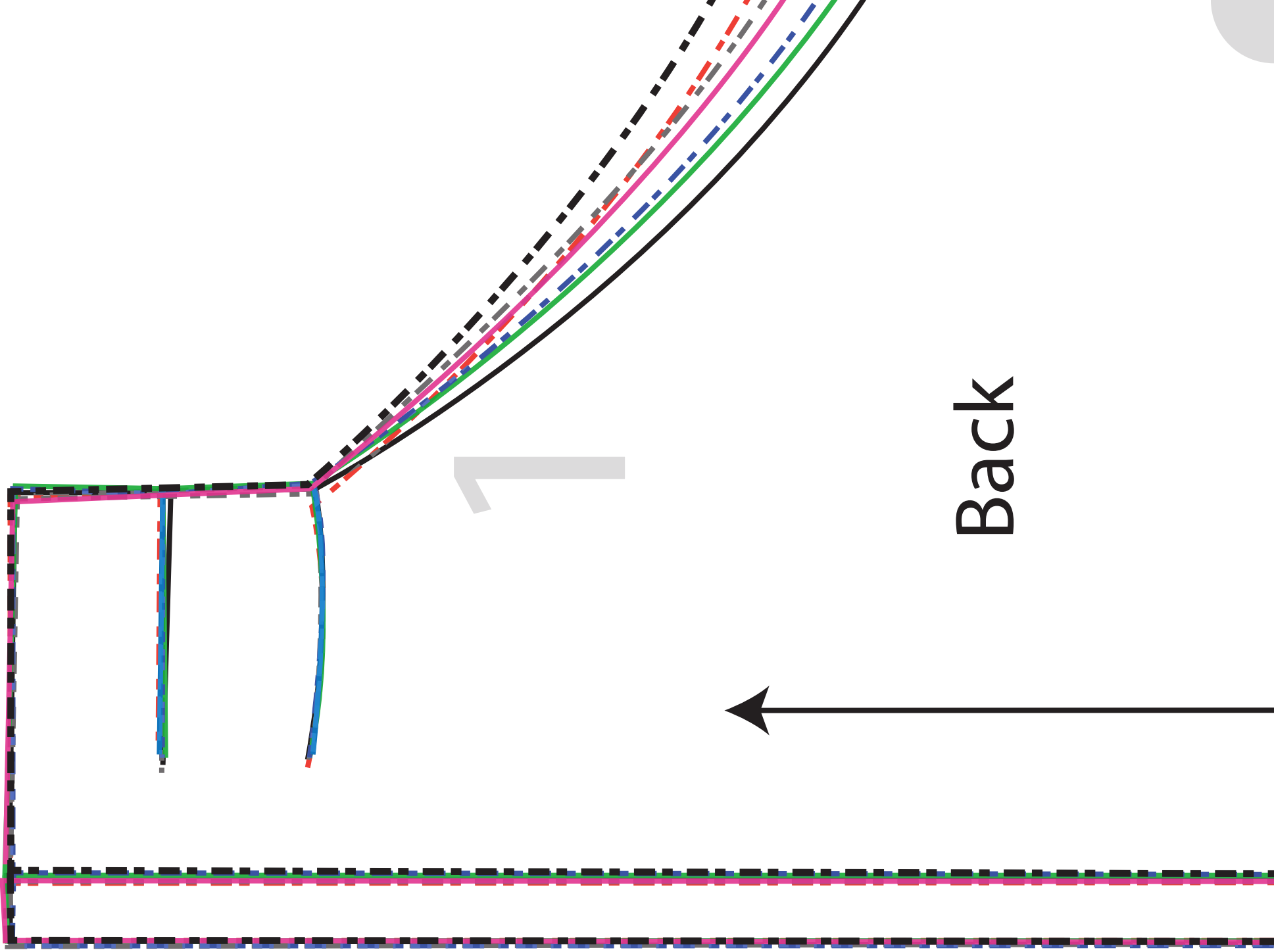
**For the latest list of both free and paid patterns available, pop on over to [my designer page at Craftsy](#).**

**This pattern graphic, the photos and the instructions are copy right Mayra Cecilia Morales at So Sew Easy. Please do not copy, publish, sell, redistribute or alter them in any way. Please don't print and give to your friends, or send it to anyone by email. Please do not rebrand this work as your own and sell or give it away, even if altered. This is intended for your personal use. If you would like to recommend these instructions, please pass on the original download link at So Sew Easy. Thank you for your understanding.**

**Usage – you ARE allowed to use this pattern to make things to sell on a small handmade basis, such as for craft fairs and for your Etsy shop. However it may not be used for larger scale commercial purposes without a commercial licence.**

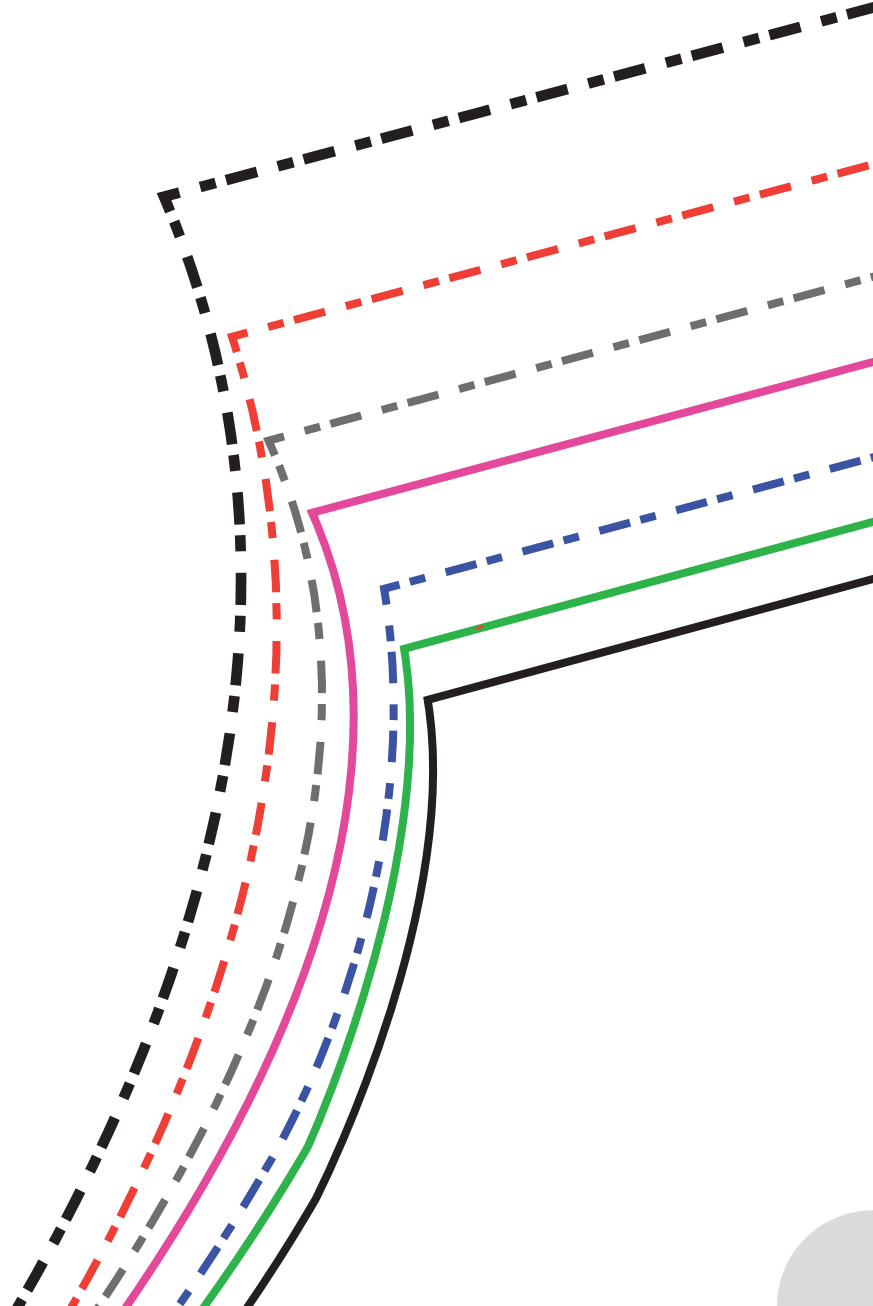
*Find more great sewing patterns at So Sew Easy – <http://so-sew-easy.com>*





**2'x2'**  
**Test**  
**Square**

2



3

XXX

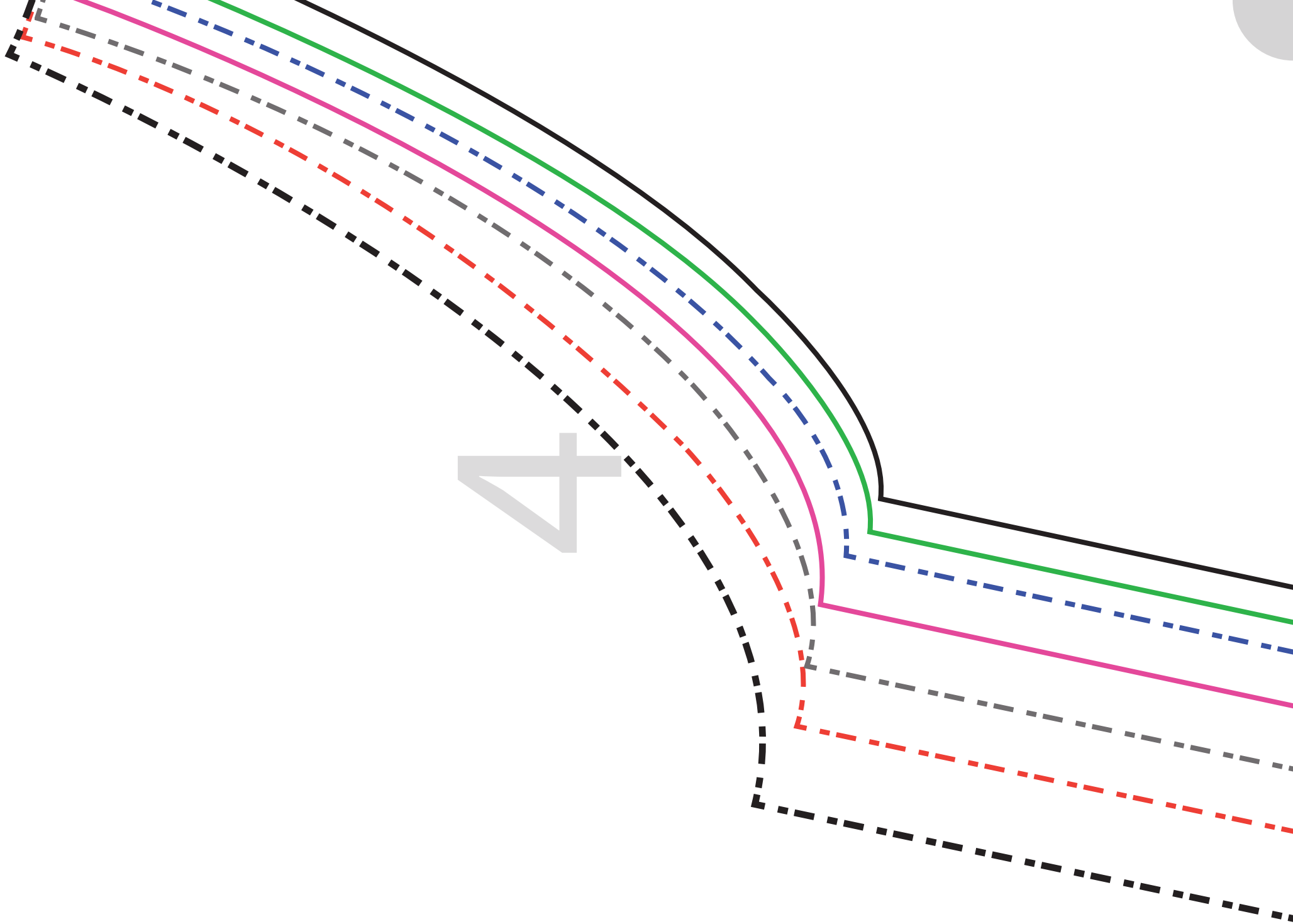
XS

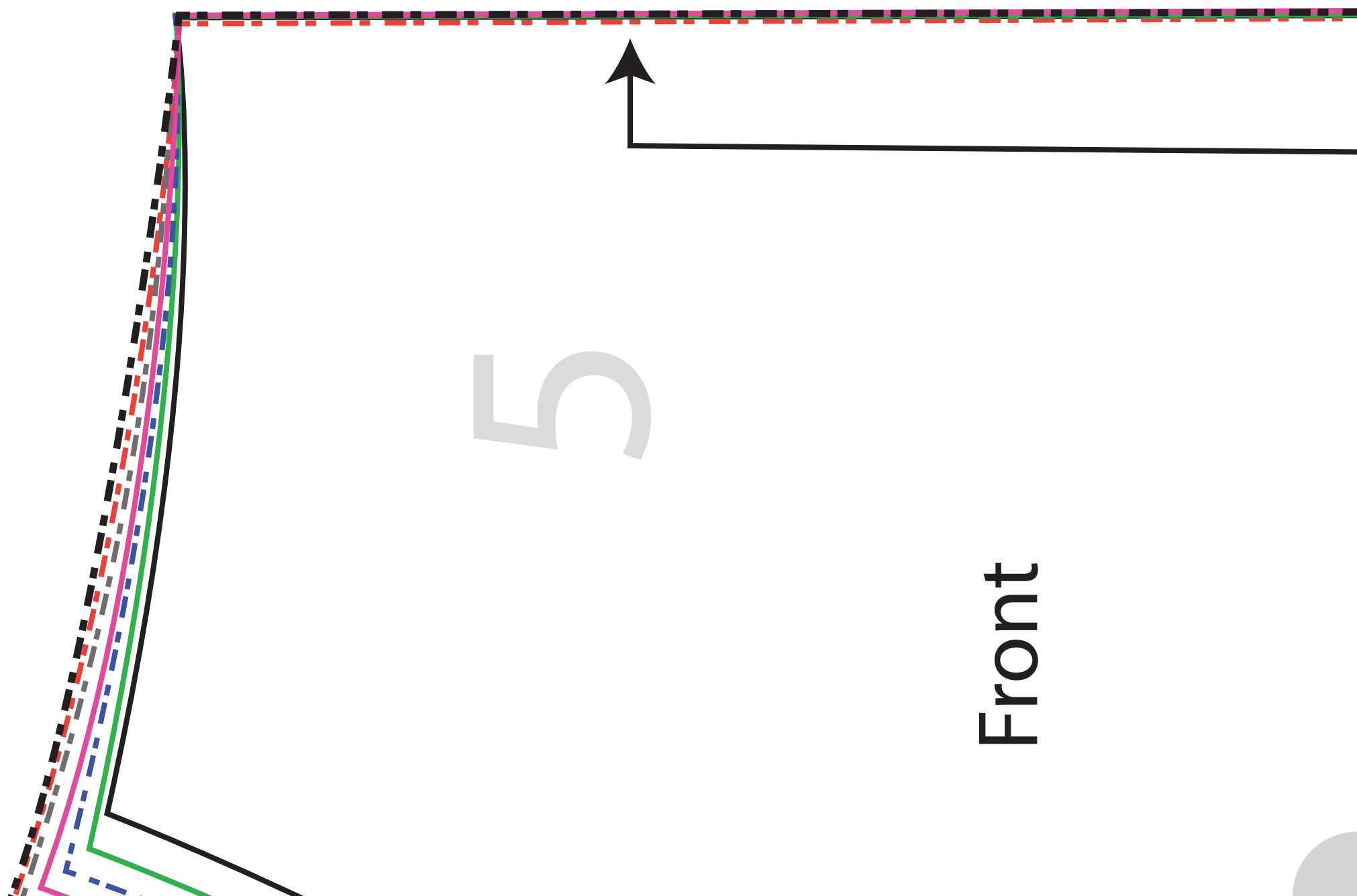
S

M

L







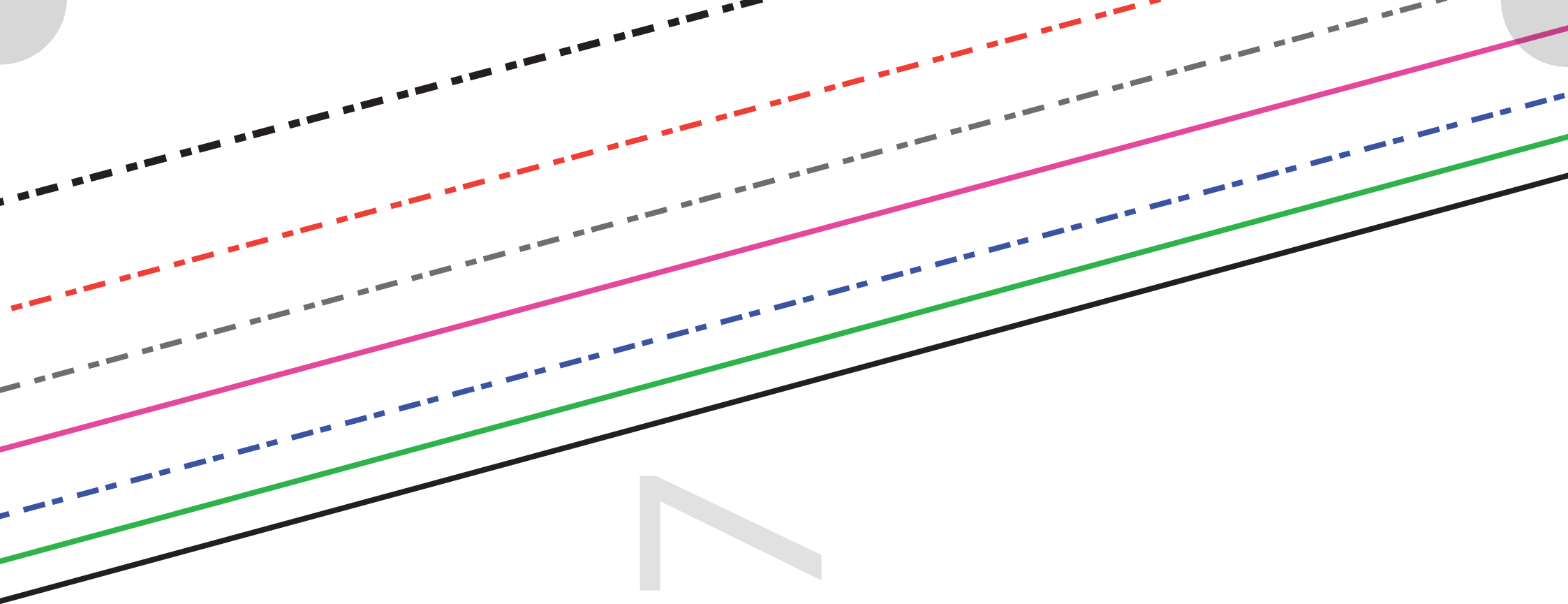
5

Front

Cut 2

6







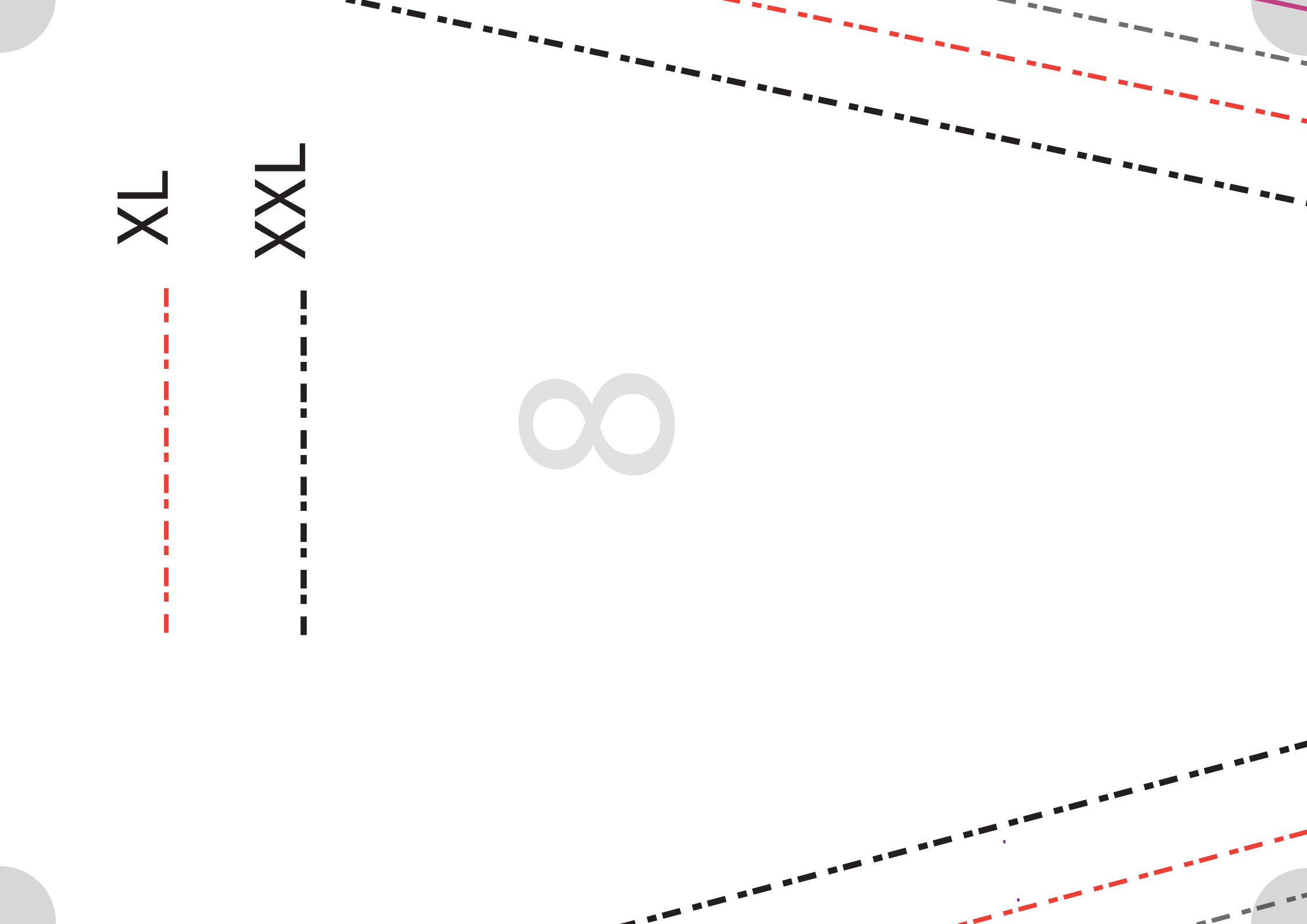
TX

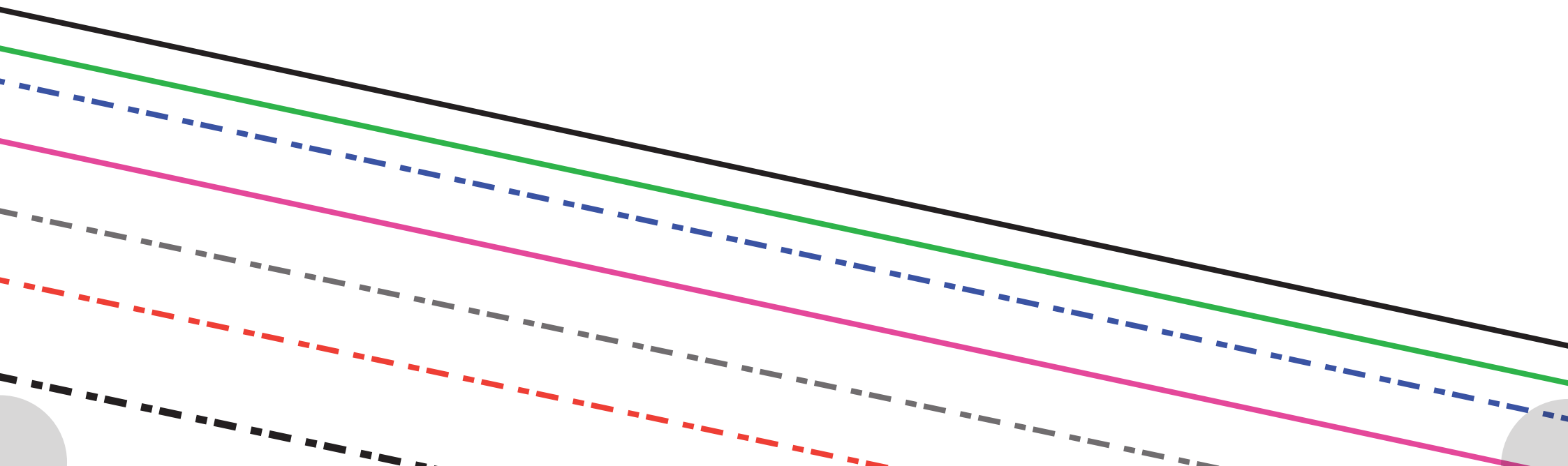


XXX



8





10

**Cut 1 on fold**

So-Sev

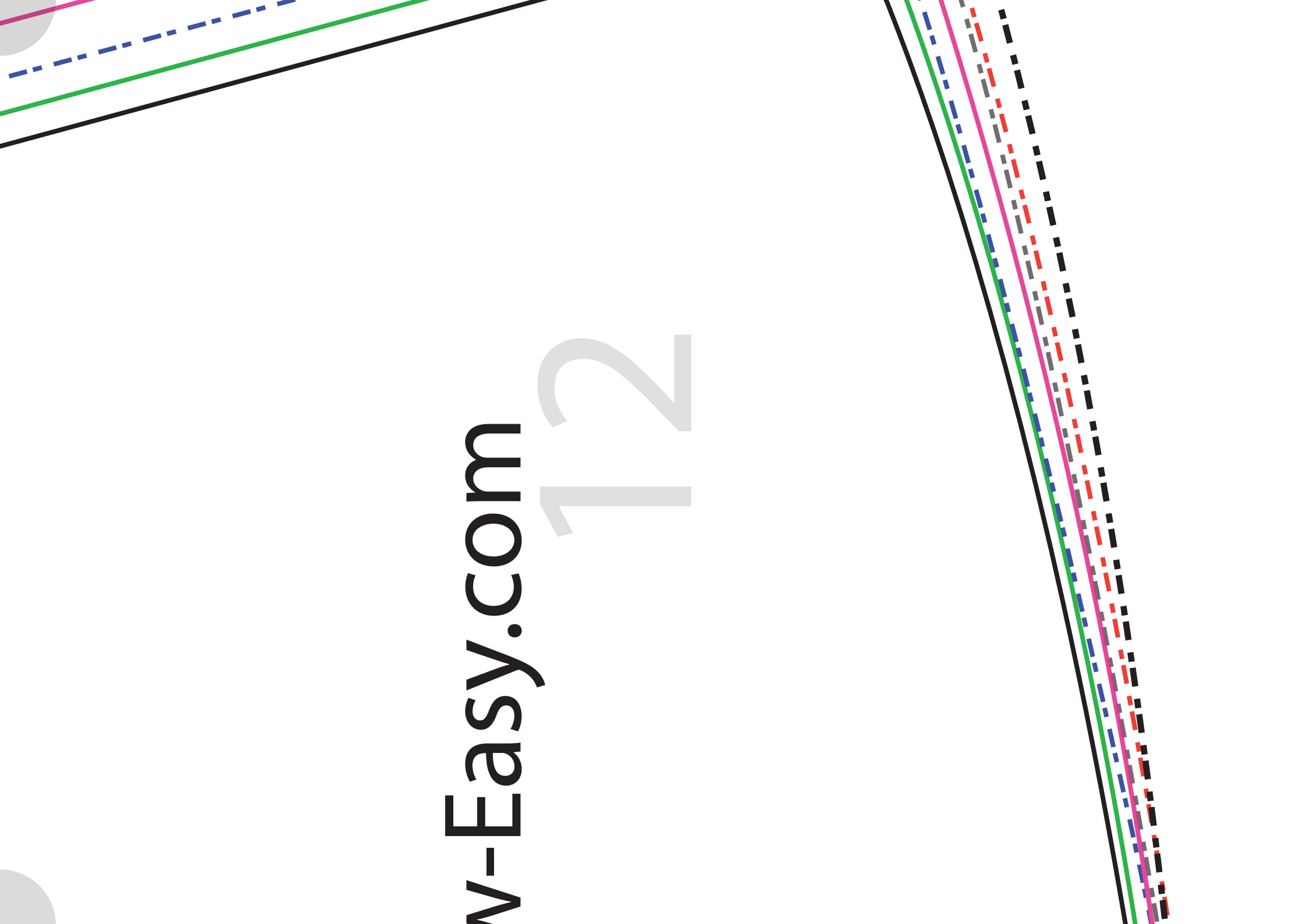
11

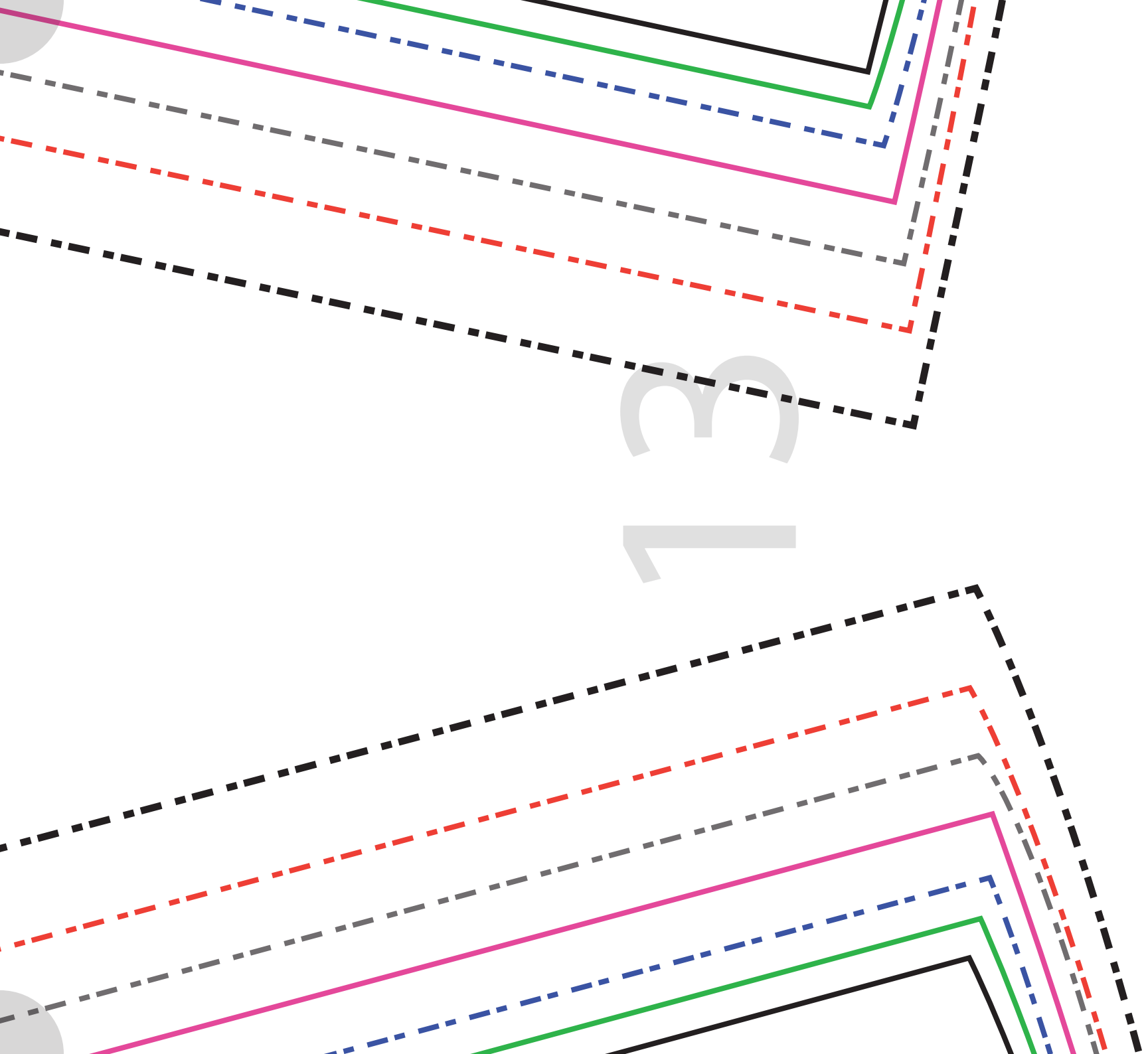




www-Easy.com

12



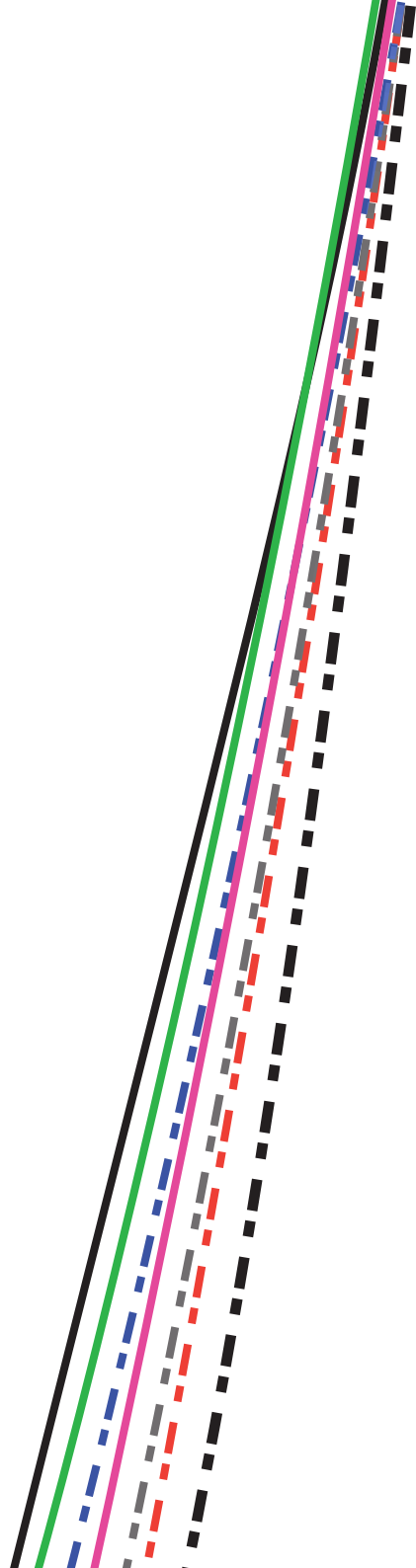


3  
1

Cop

# So-Sew-Easy

# 14



Copyright 2016 So-Sew-Easy.com

/.com

15

