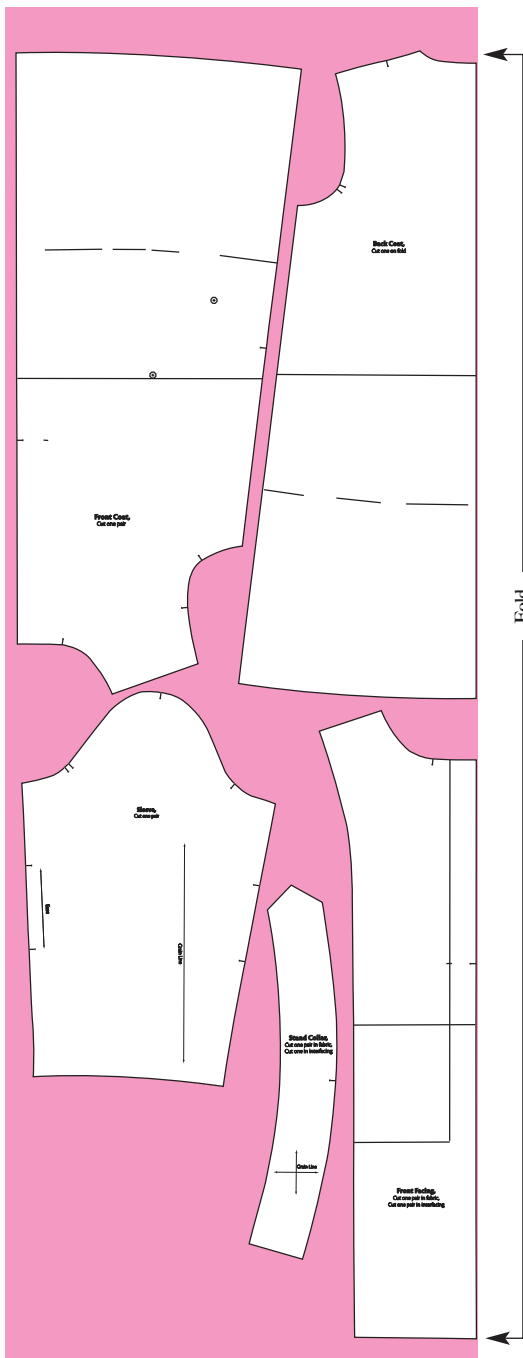


# Adult Raincoat & Mac

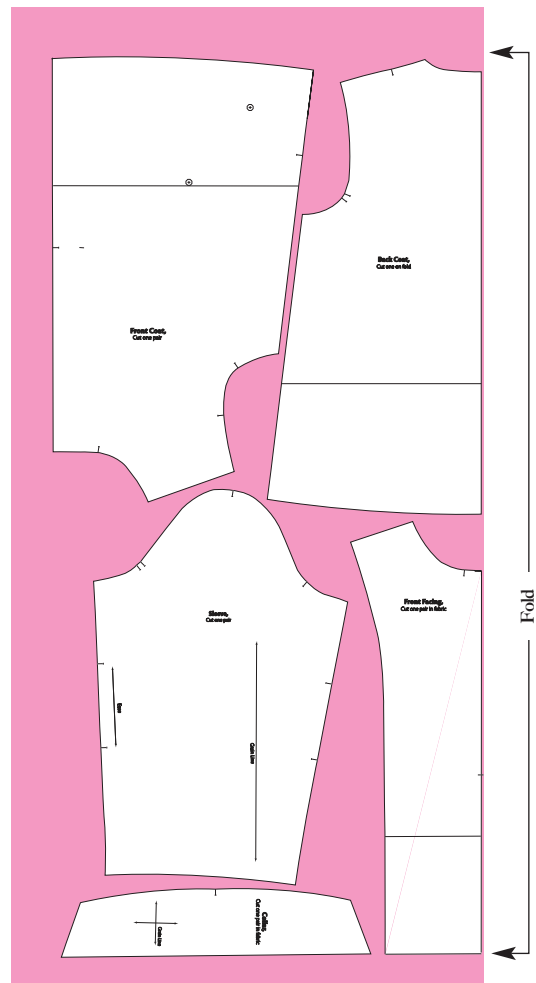


Amanda Walker  
Page 34

Fabric cutting guide, Mac

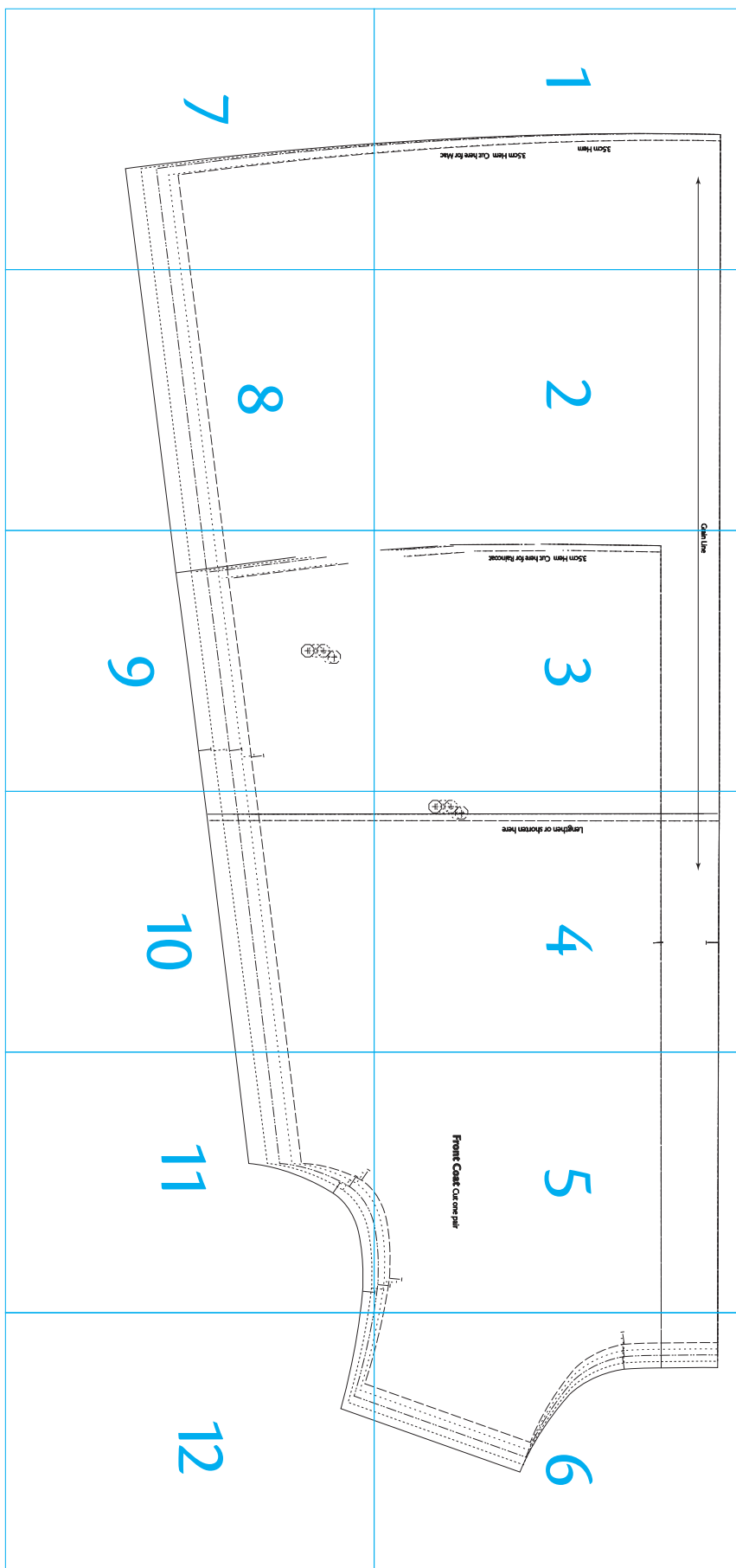


Fabric cutting guide, Raincoat



# Front Coat

12 pages





3.5cm Hem

3.5cm Hem Cut here for Mac



2

3

3.5cm Hem Cut here for Raincoat



4

Lengthen or shorten here



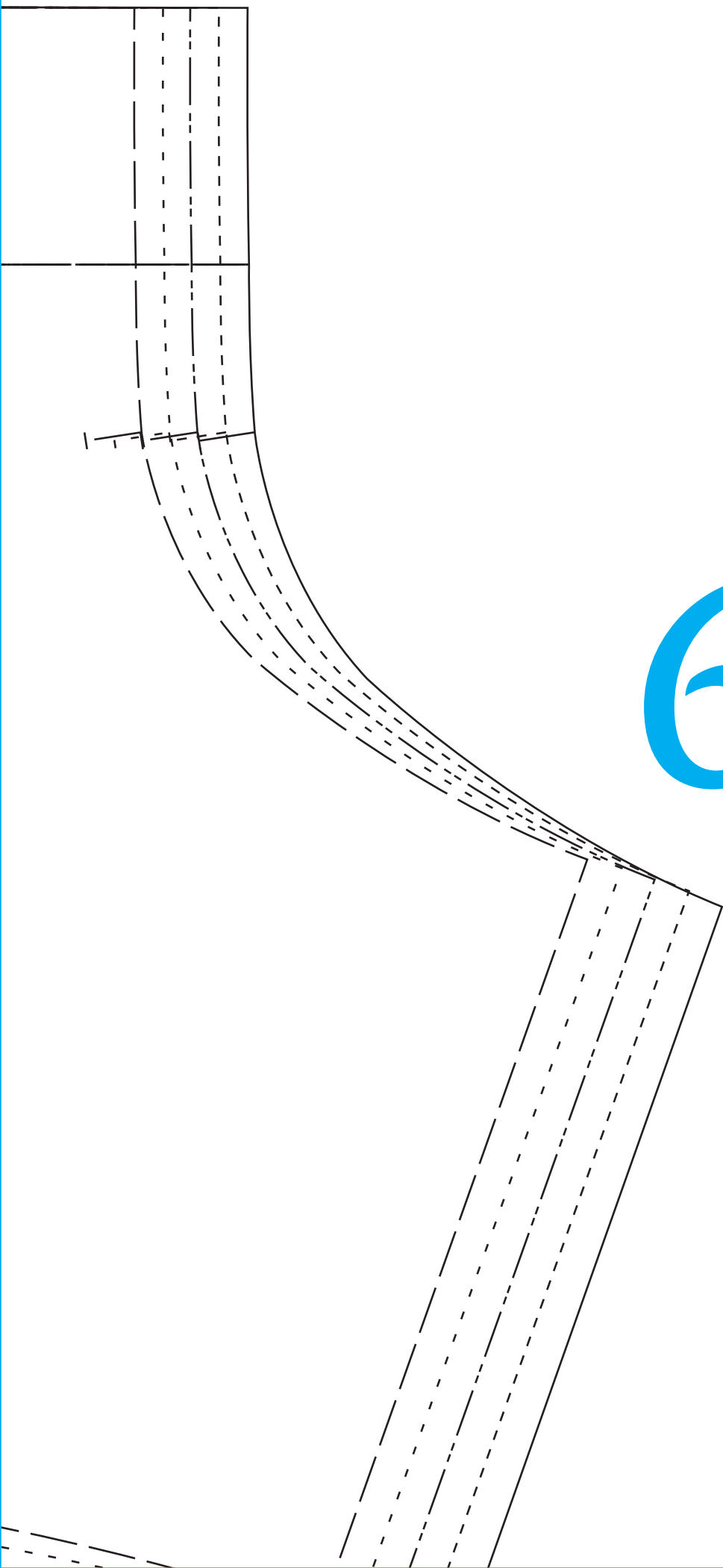
---

---

5

**Front Coat** Cut one pair

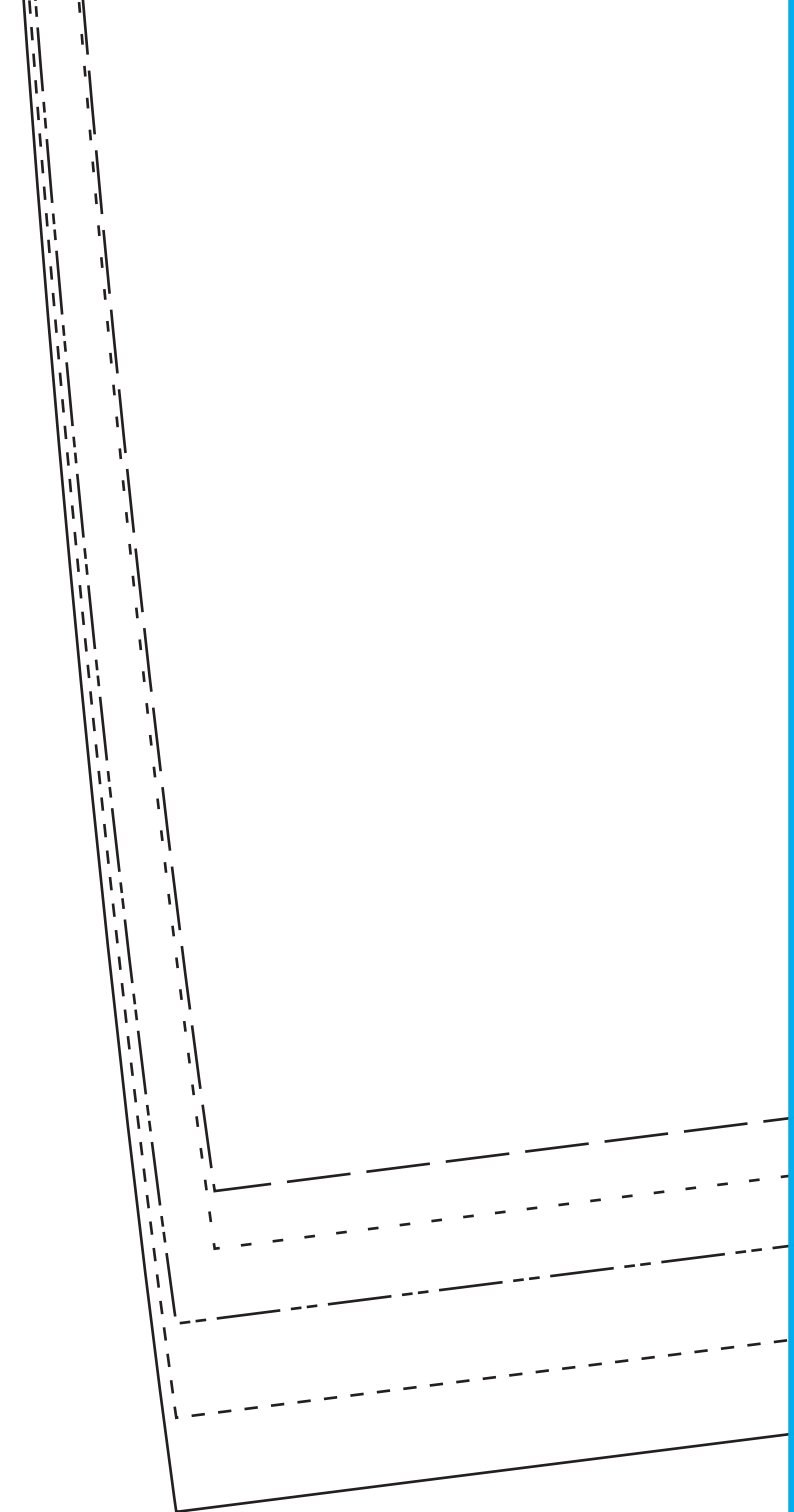




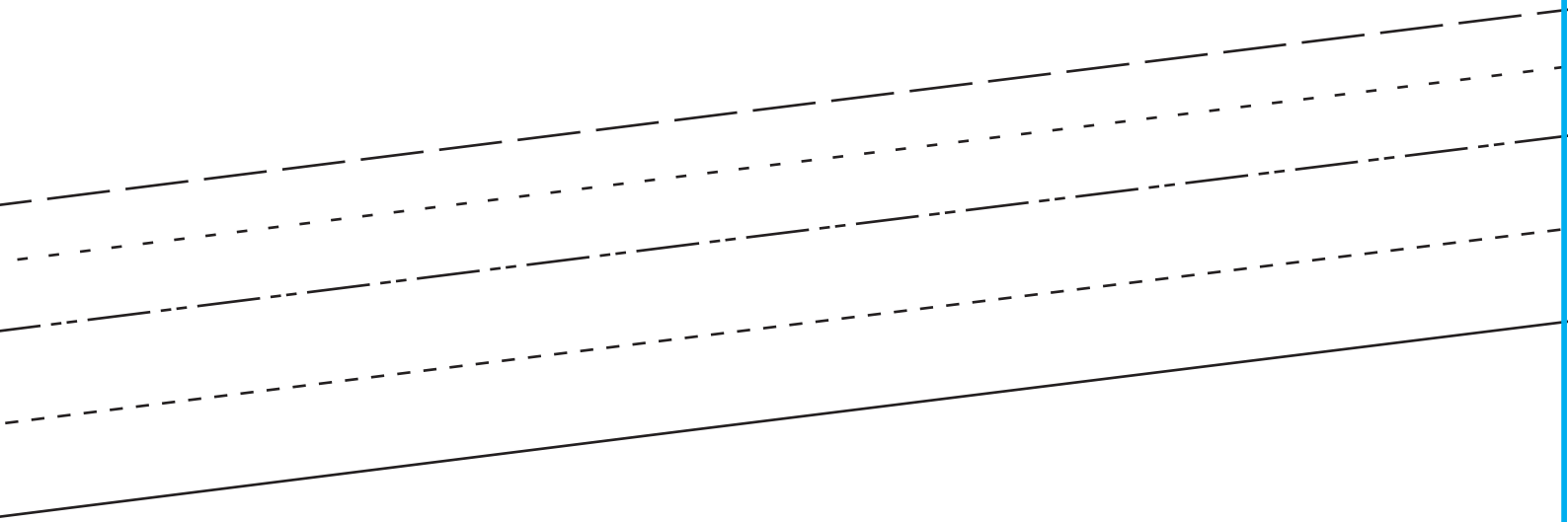
6

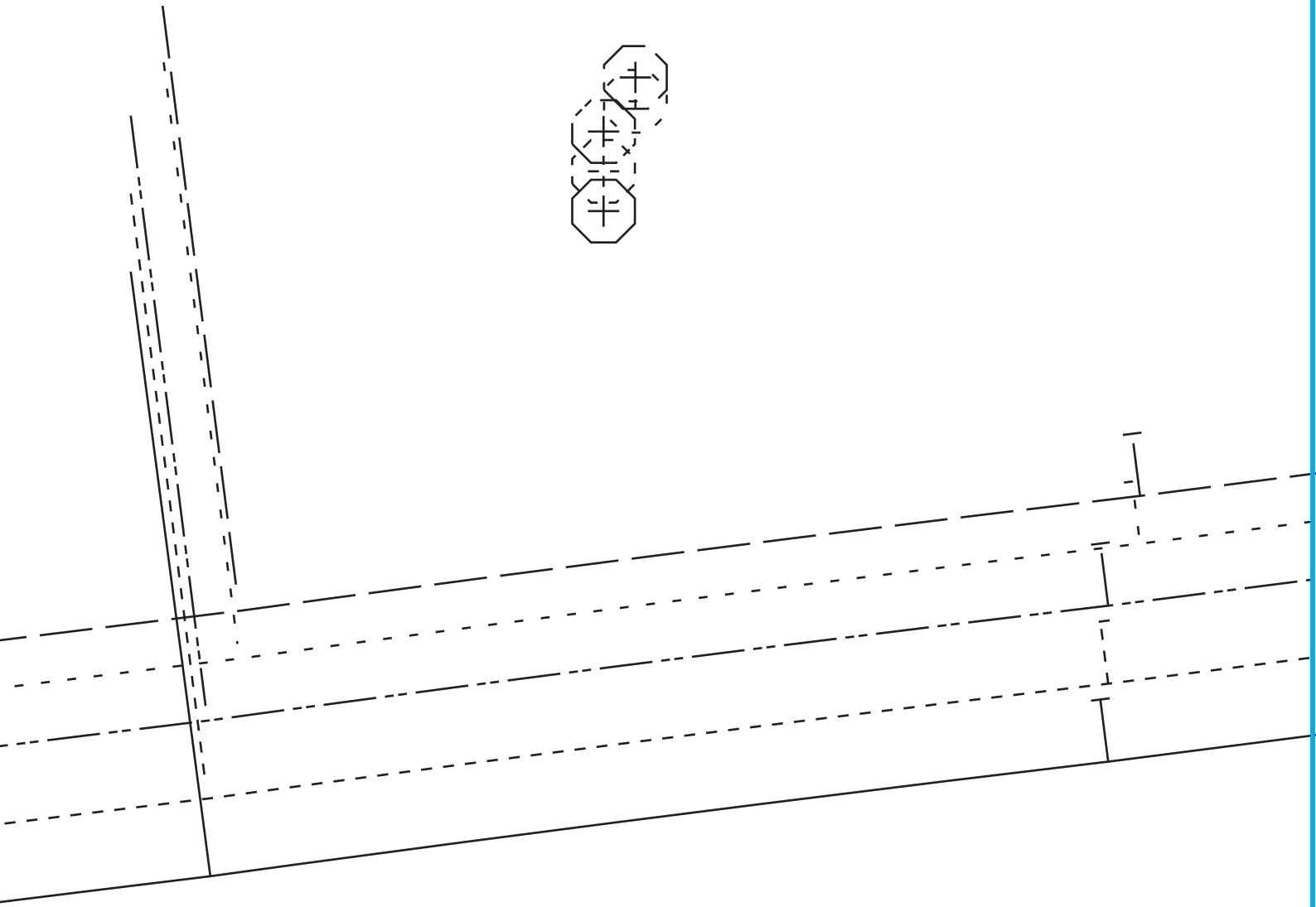


7



8

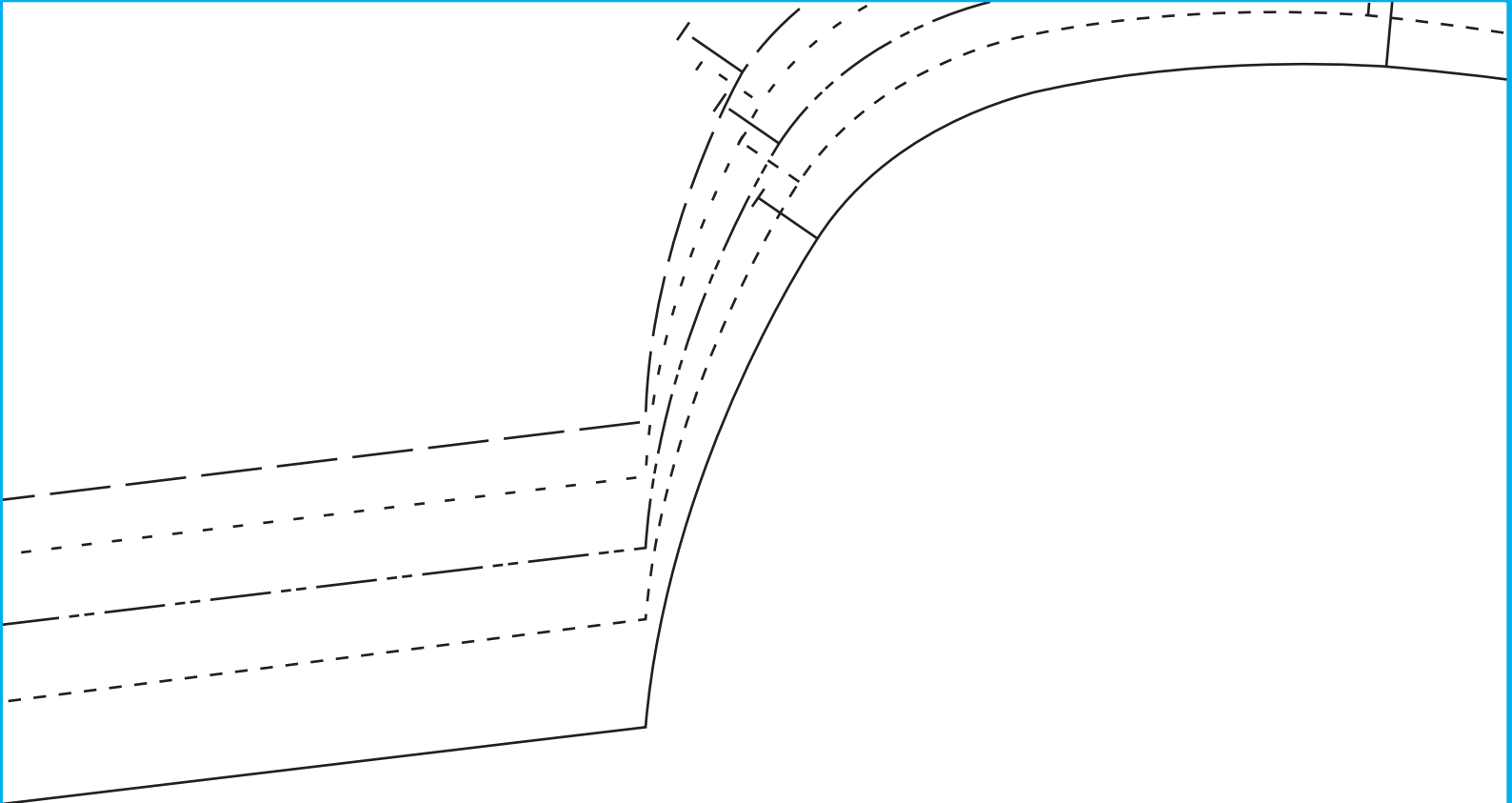




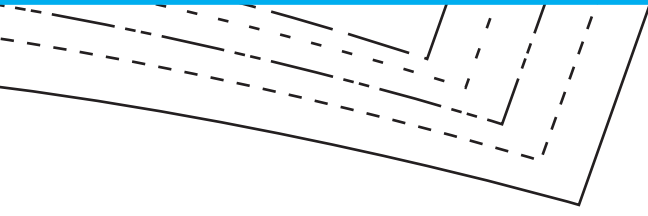
9

The top portion of the page features a handwriting practice area. It consists of a solid top line, a dashed middle line, and a solid bottom line, all sloping upwards from left to right. A vertical dashed line is positioned on the left side, intersecting the horizontal lines.

10



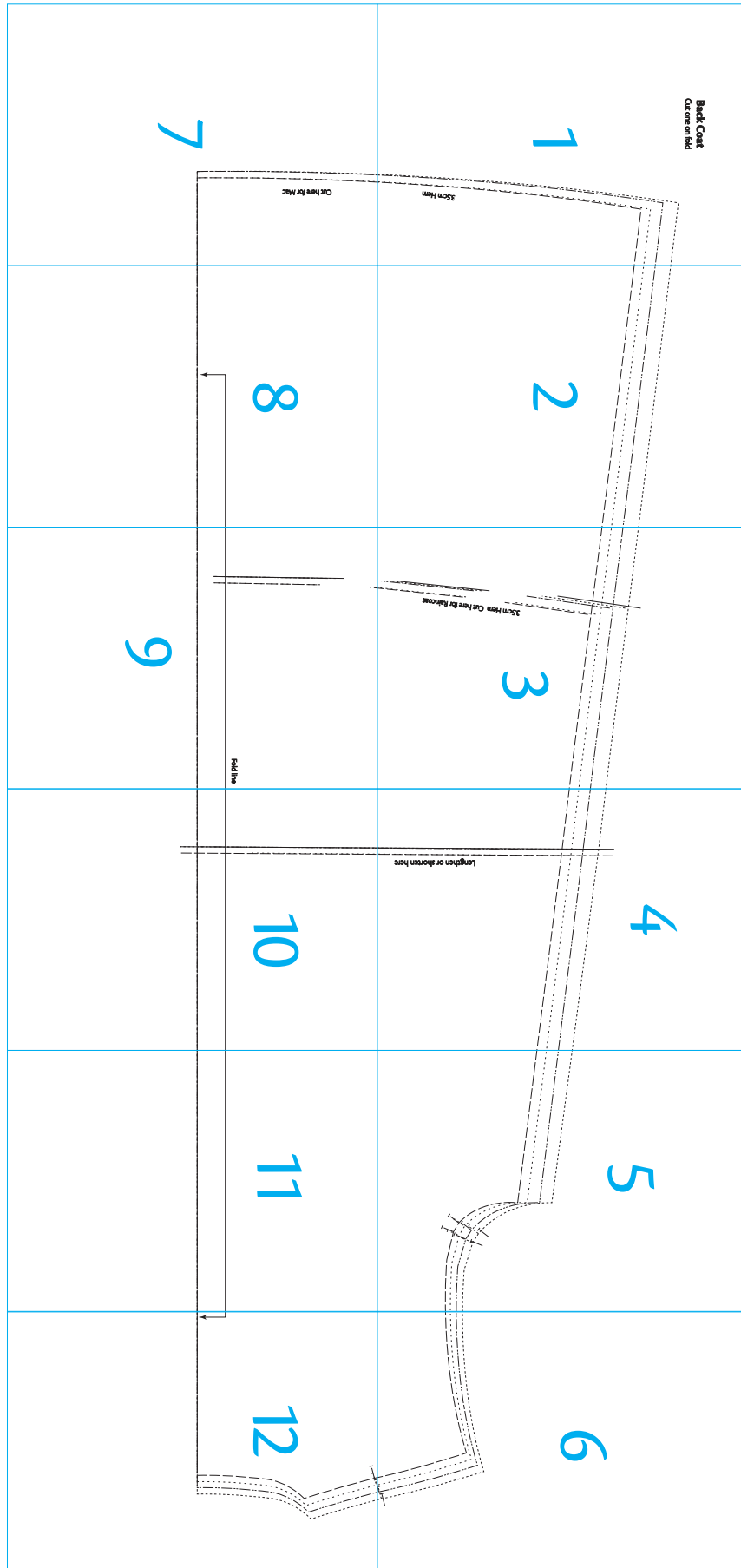
11



12

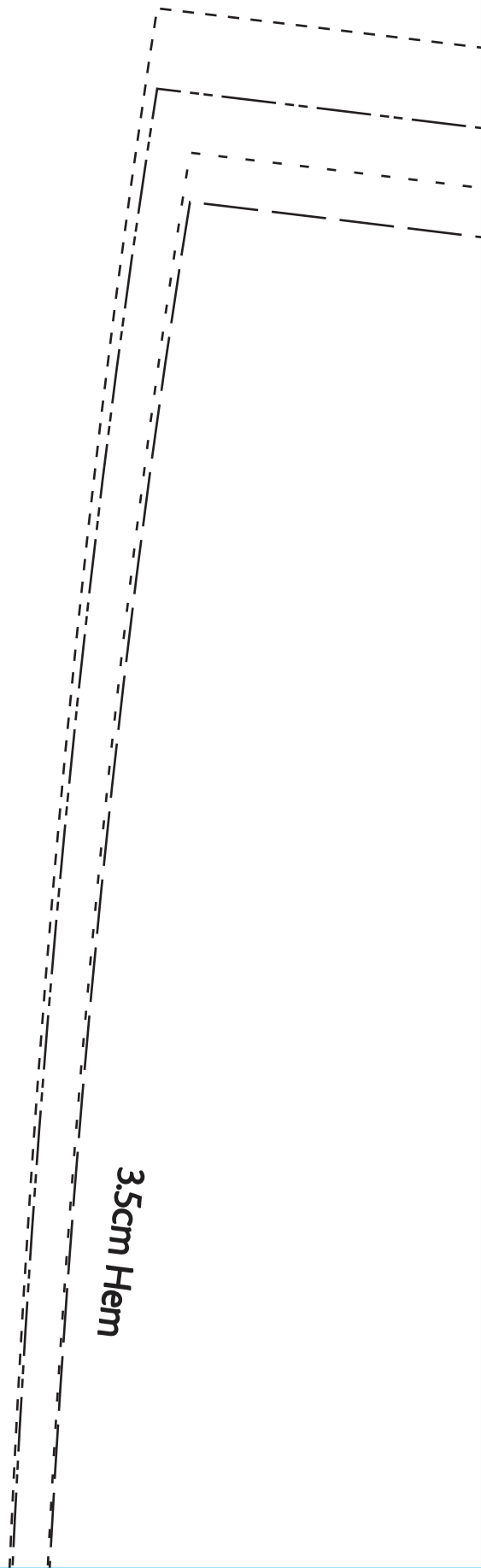
# Back Coat

12 pages



# Back Coat

Cut one on fold



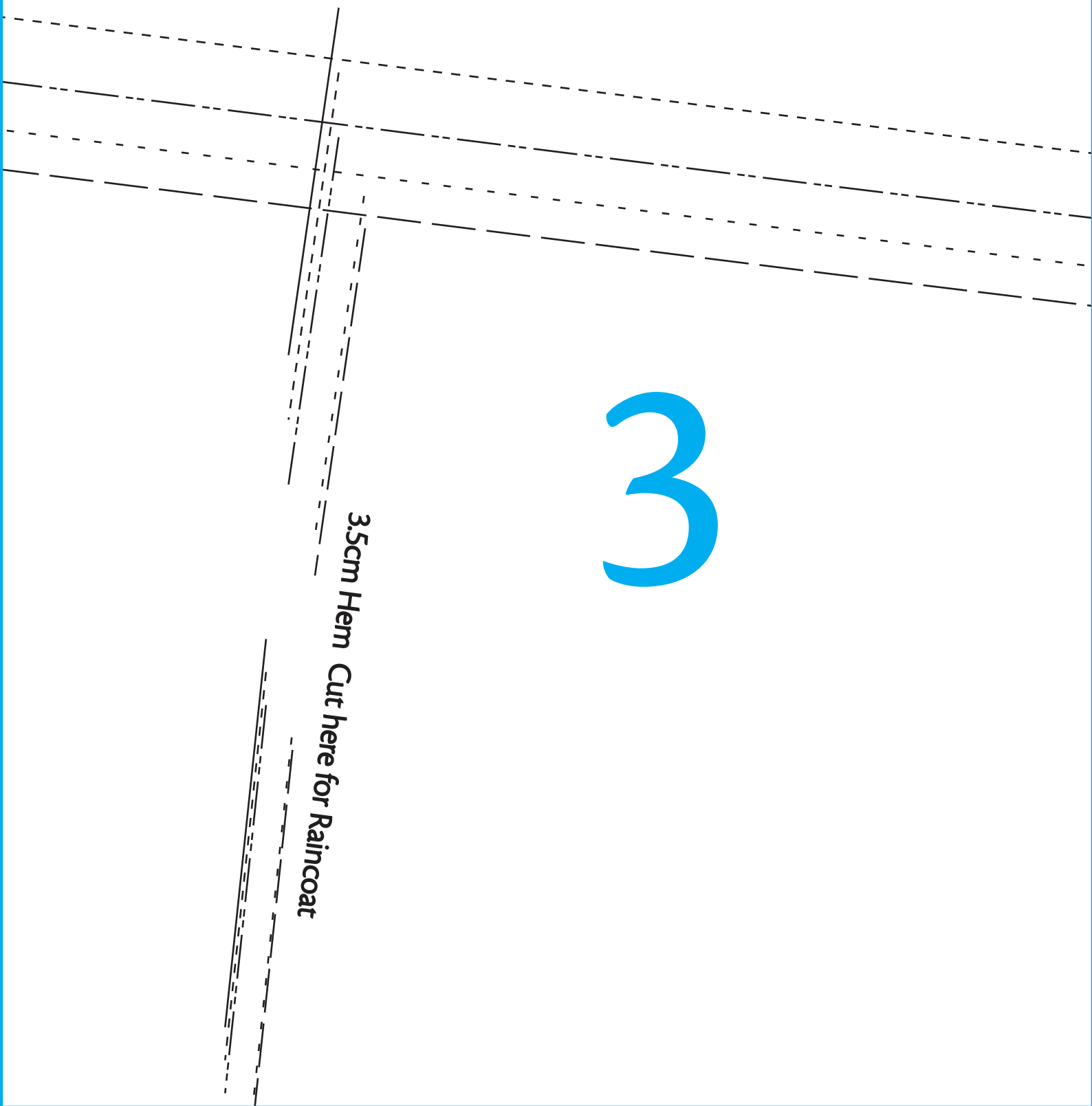


The image features a set of handwriting practice lines at the top. It consists of four parallel lines that slope downwards from left to right. The lines alternate between solid and dashed: a solid line, a dashed line, a solid line, and a dashed line.

2

3

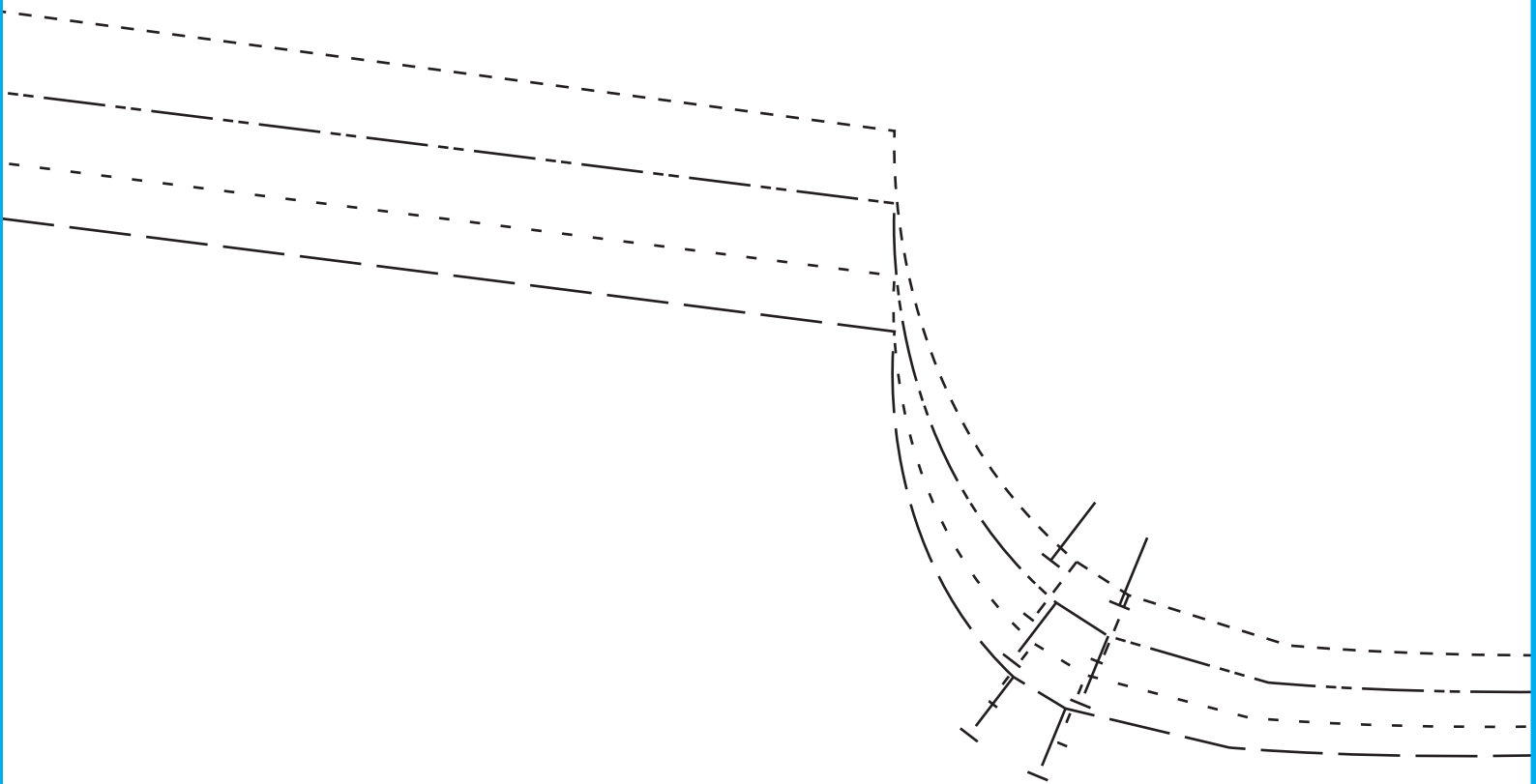
3.5cm Hem Cut here for Raincoat



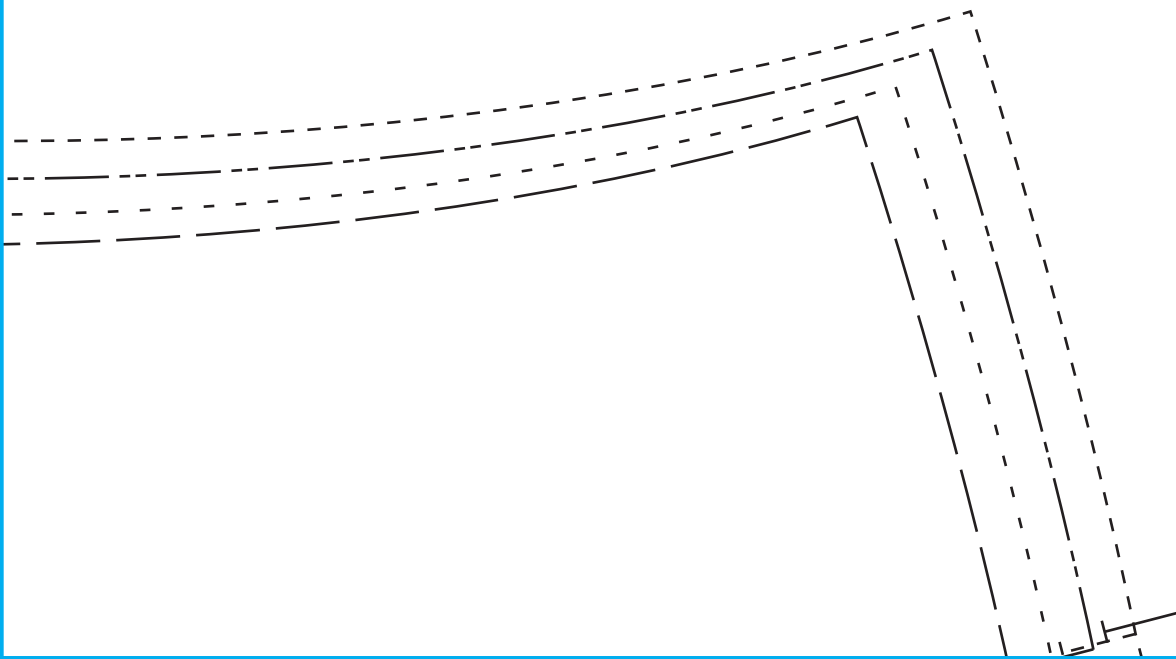
4

Lengthen or shorten here

5



6



Cut here for Mac



8



Fold line

9



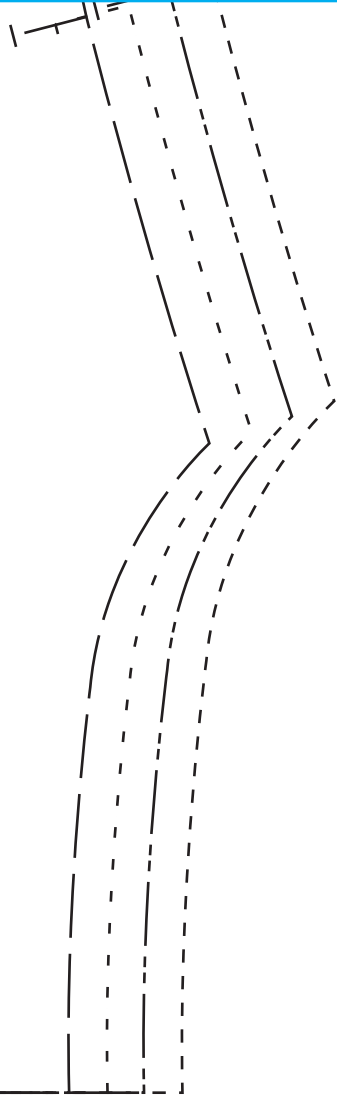
10

11

---

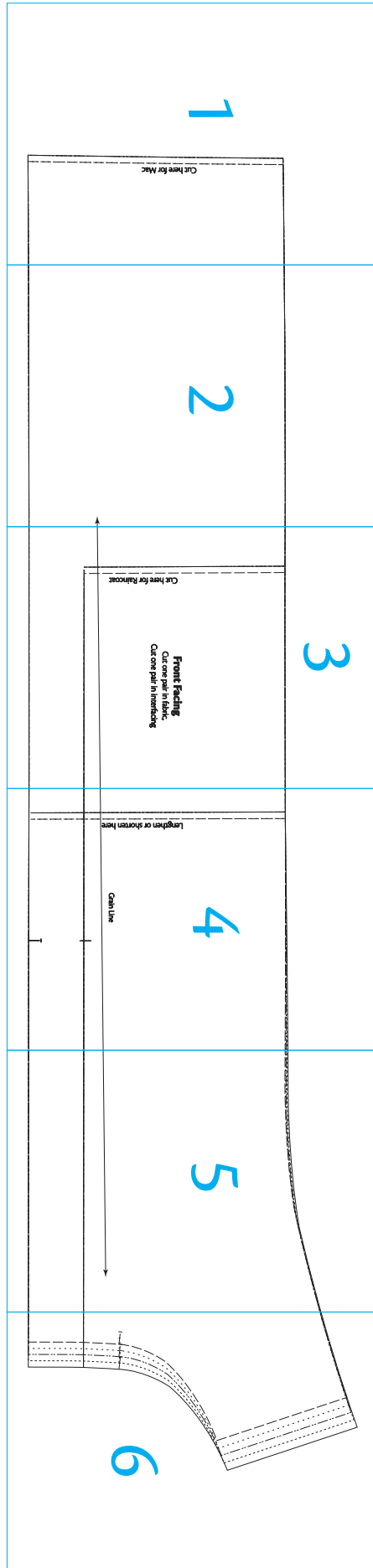
---

12



# Front Facing

6 pages



Cut here for Mac



---

2



# 3

Cut here for Raincoat

**Front Facing**  
Cut one pair in fabric,  
Cut one pair in interfacing

4

Lengthen or shorten here

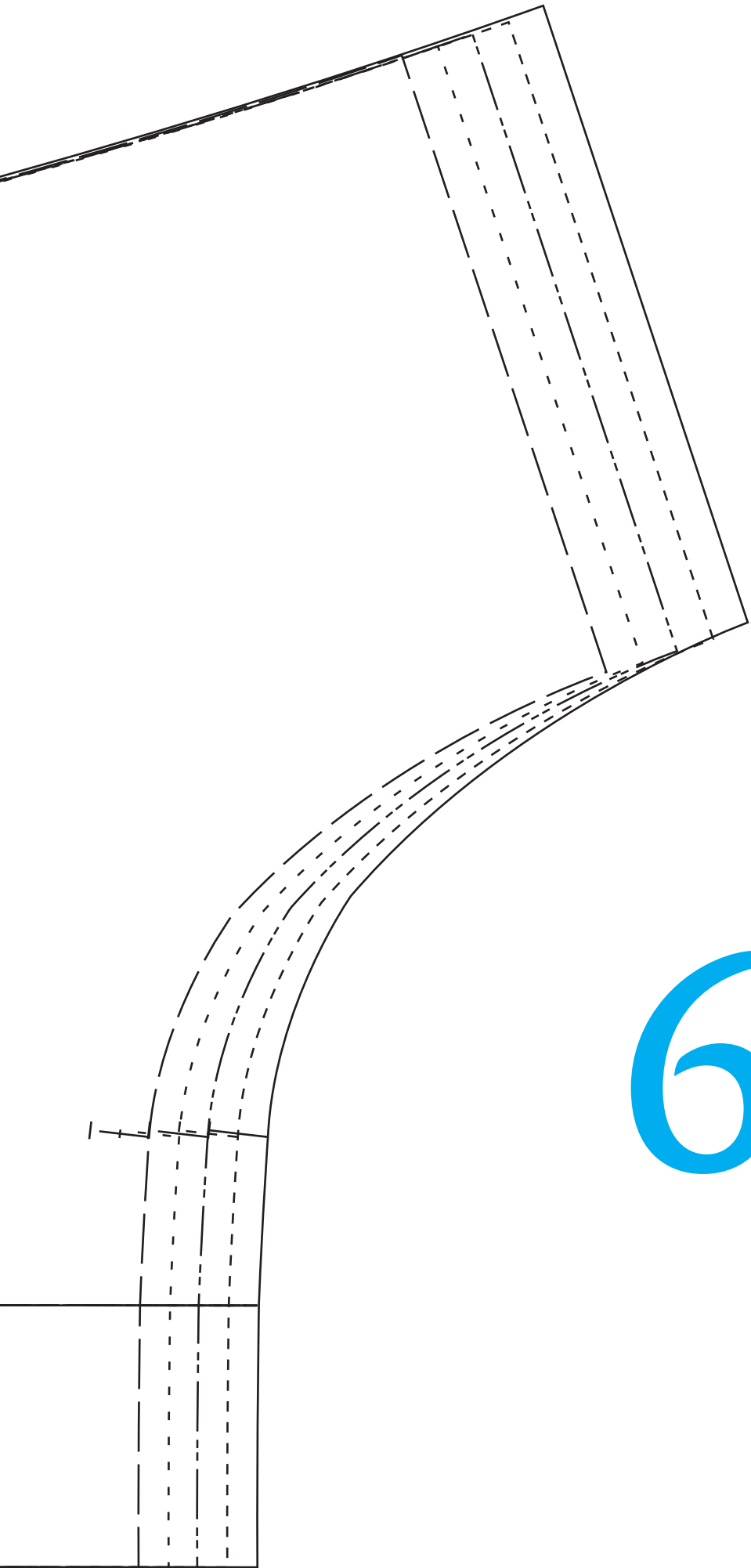
Grain Line





A graph on a white background with a blue border. A dashed black curve starts at the left edge, remains nearly horizontal, then curves upwards to the right. A solid black horizontal line with an arrowhead at the right end is positioned below the curve. A large blue number '5' is centered in the middle of the page.

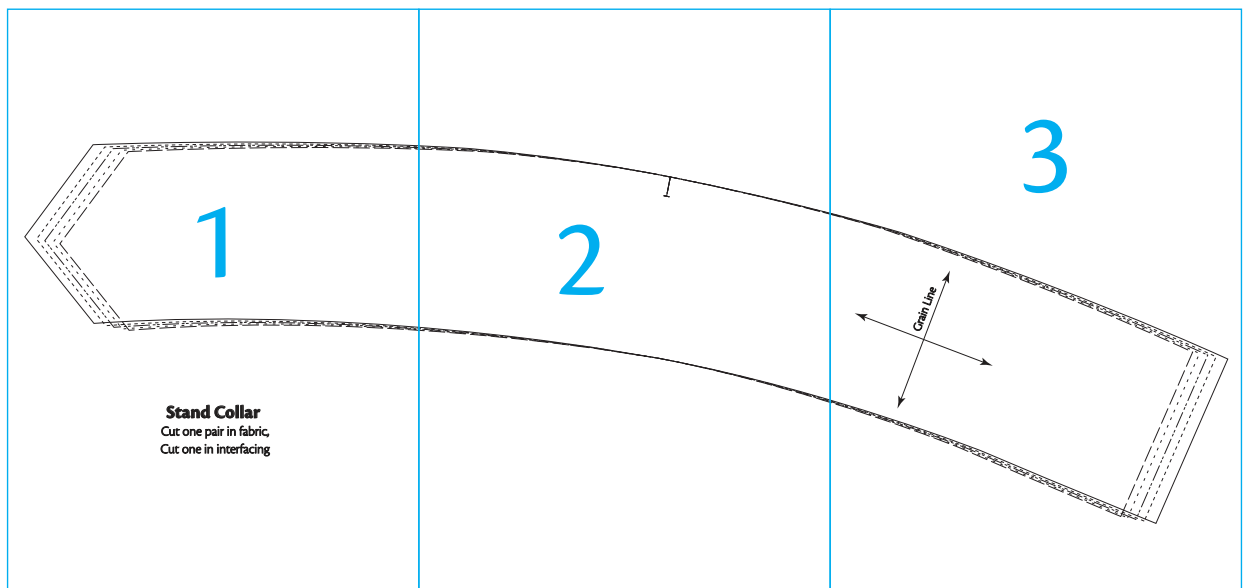
5

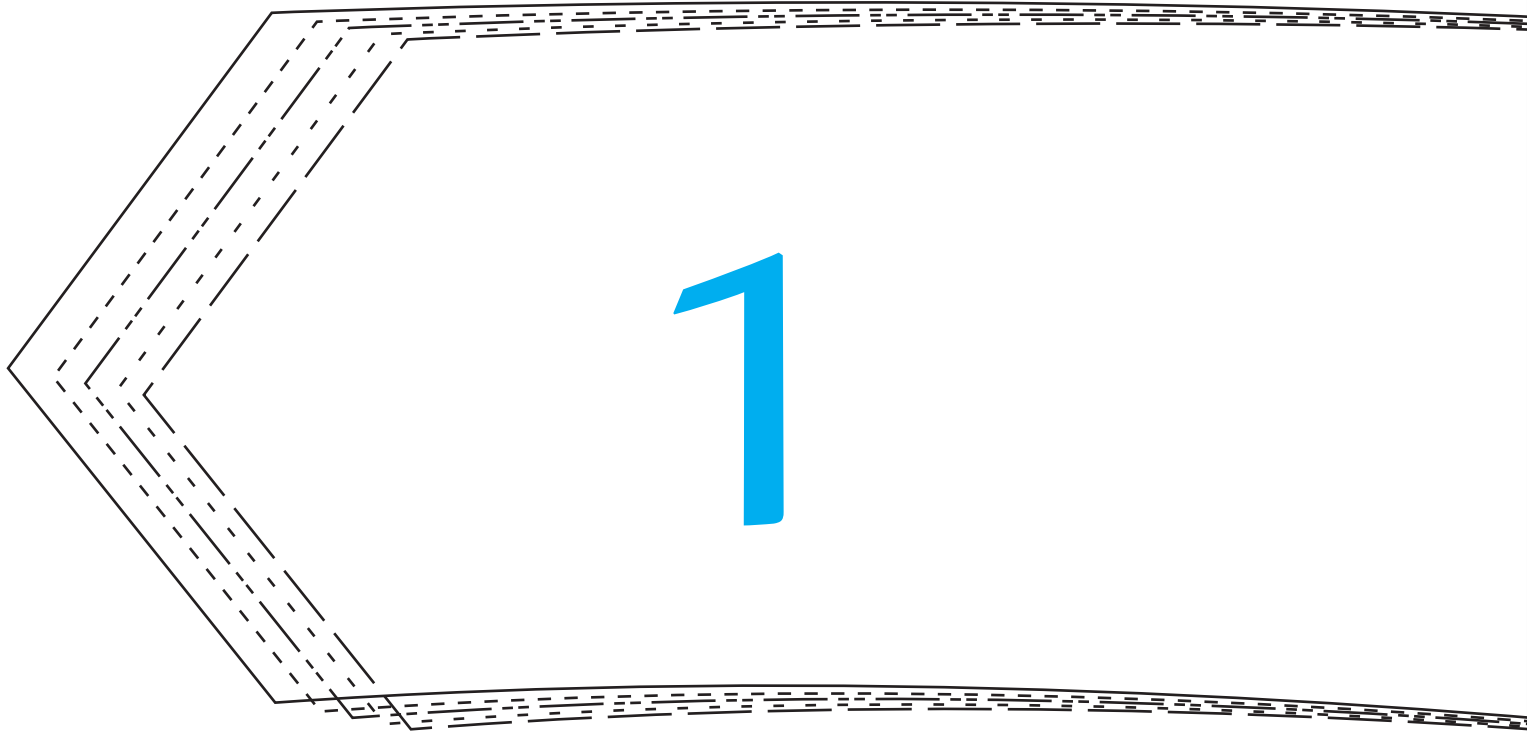


6

# Stand collar

3 pages



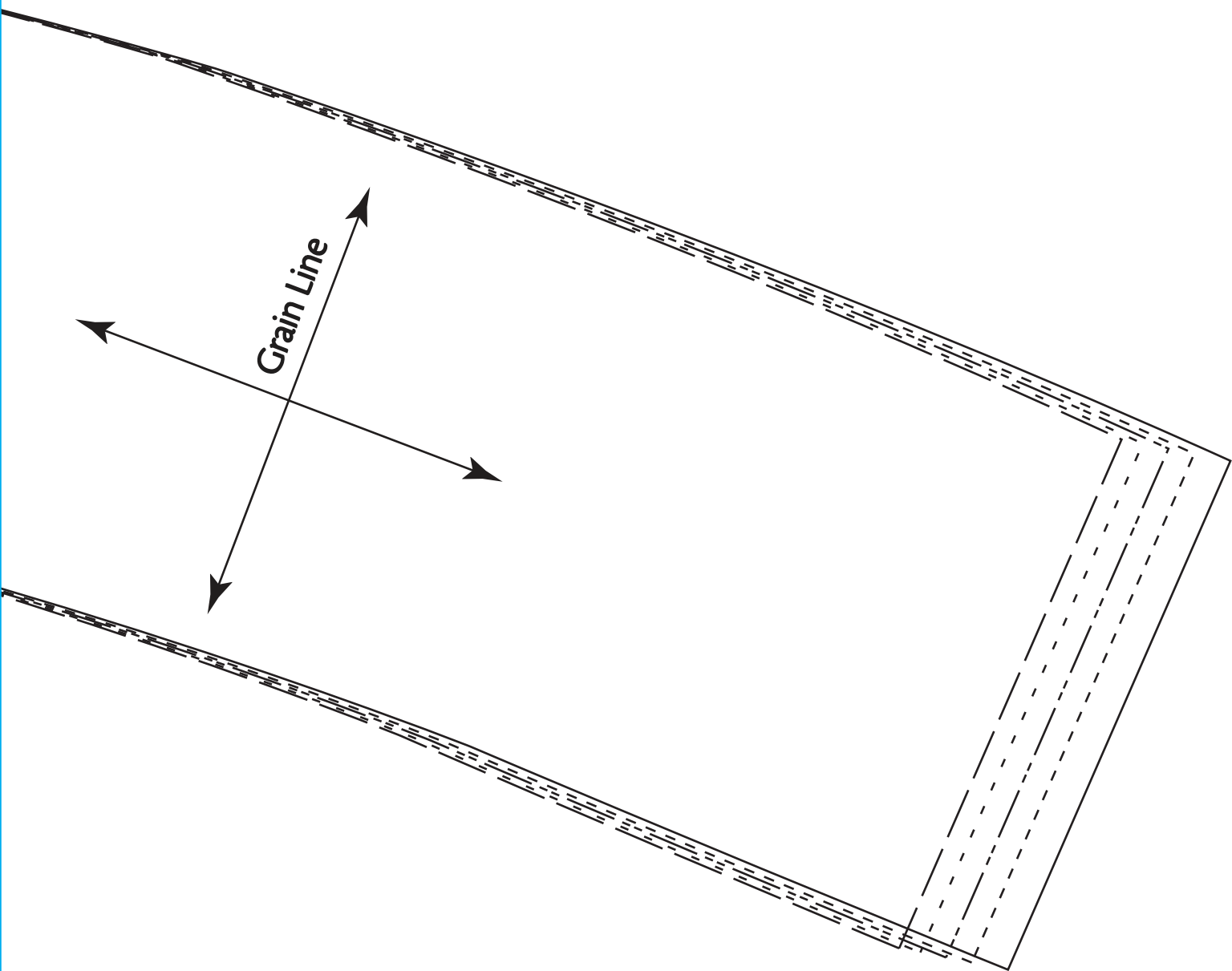


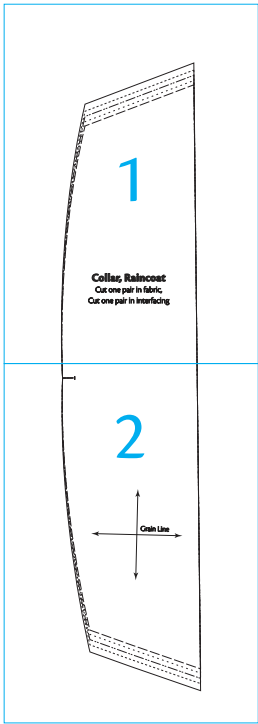
## **Stand Collar**

Cut one pair in fabric,  
Cut one in interfacing

2

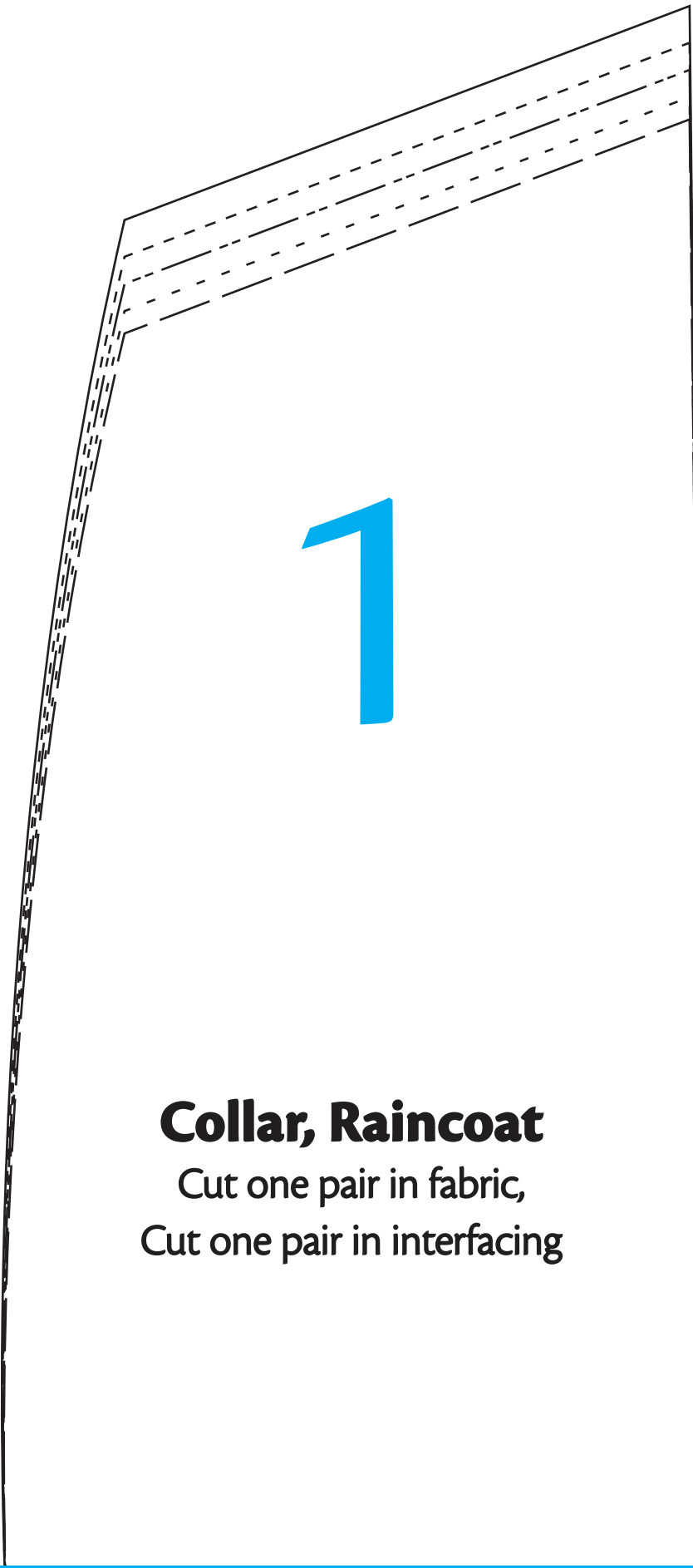
3





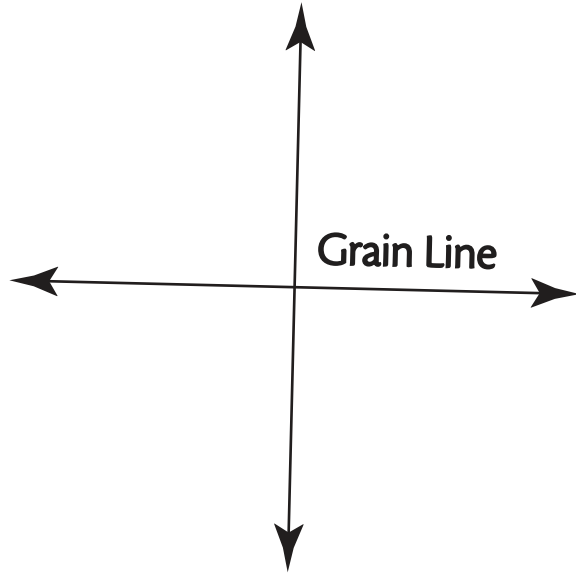
## Collar, Raincoat

2 pages



**Collar, Raincoat**  
Cut one pair in fabric,  
Cut one pair in interfacing

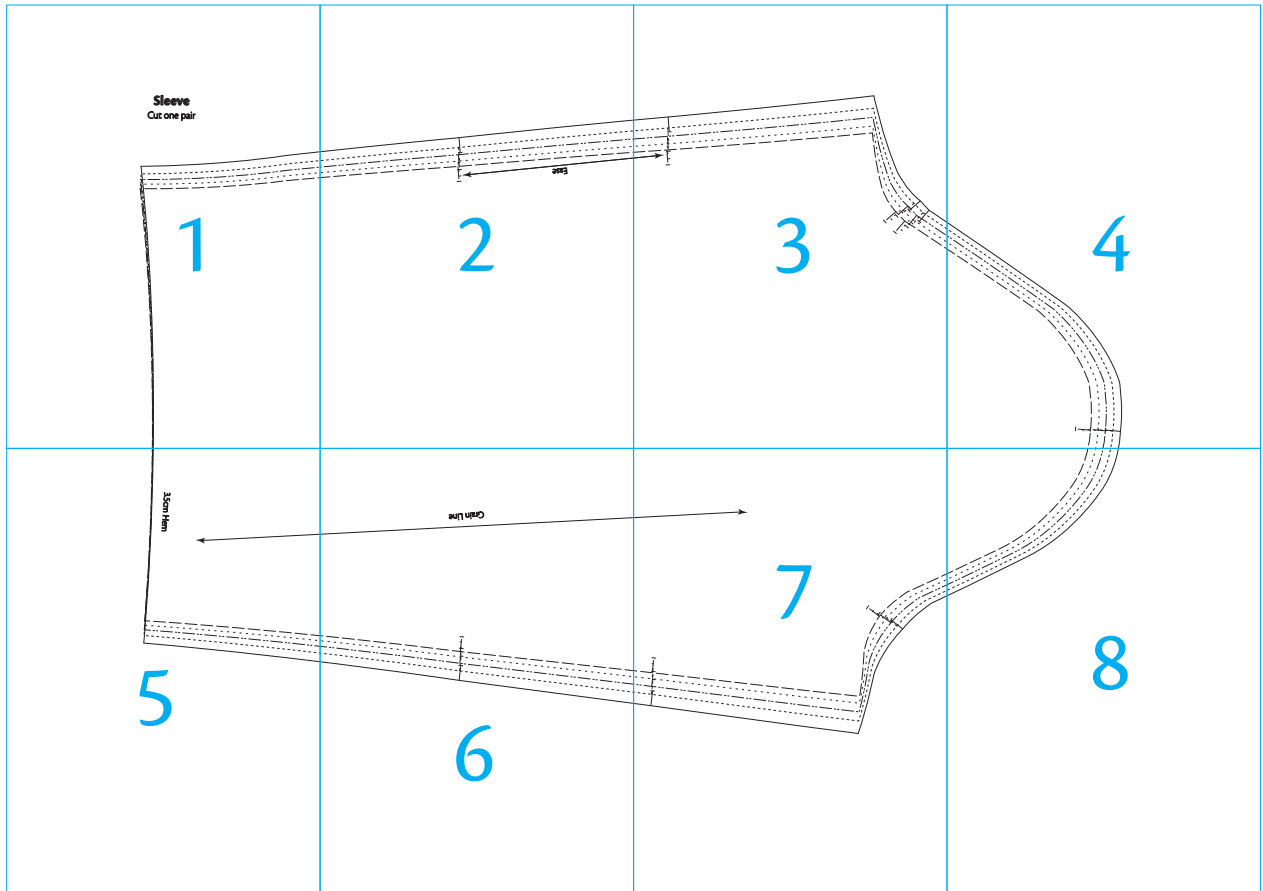
2





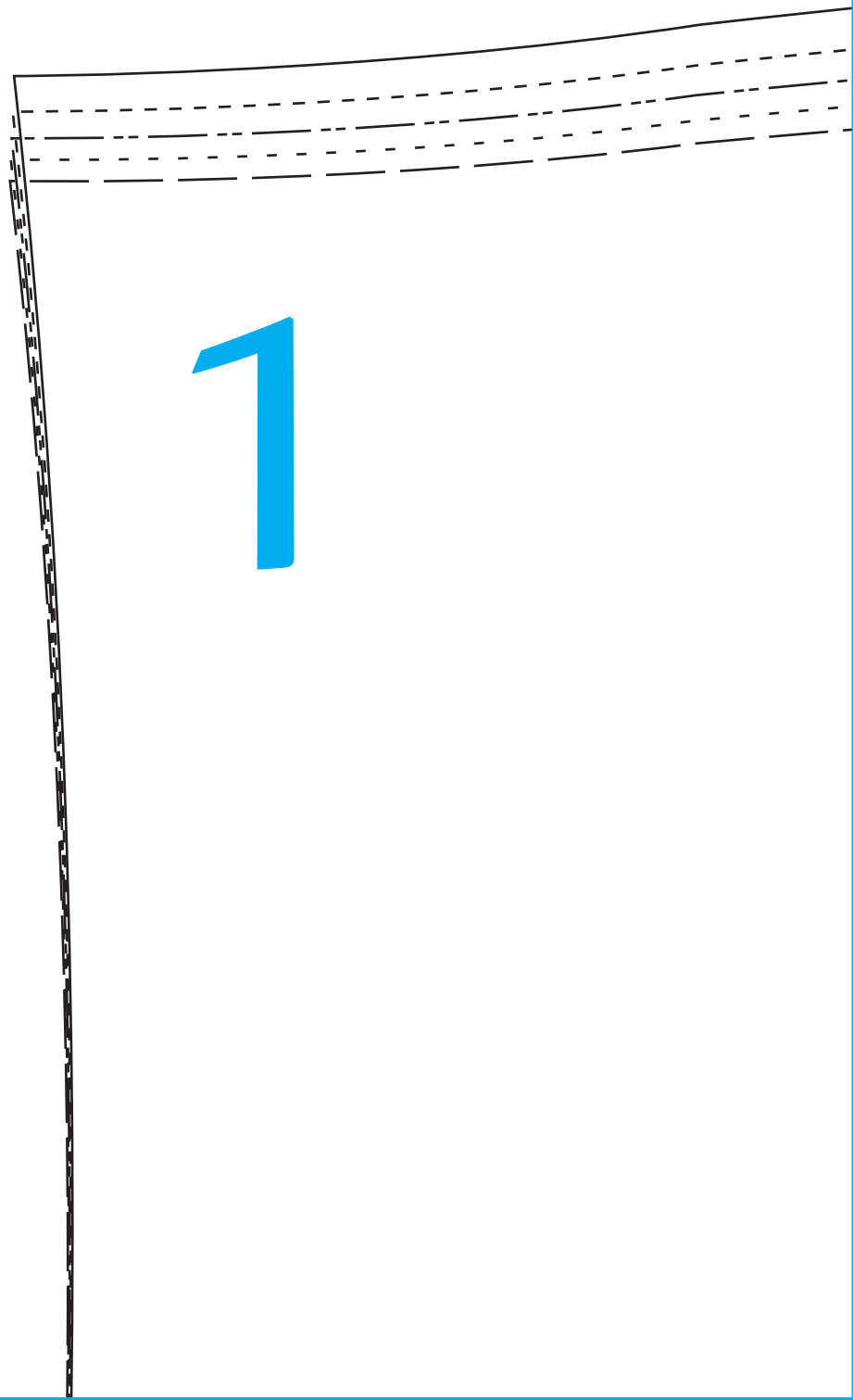
# Sleeve

2 pages



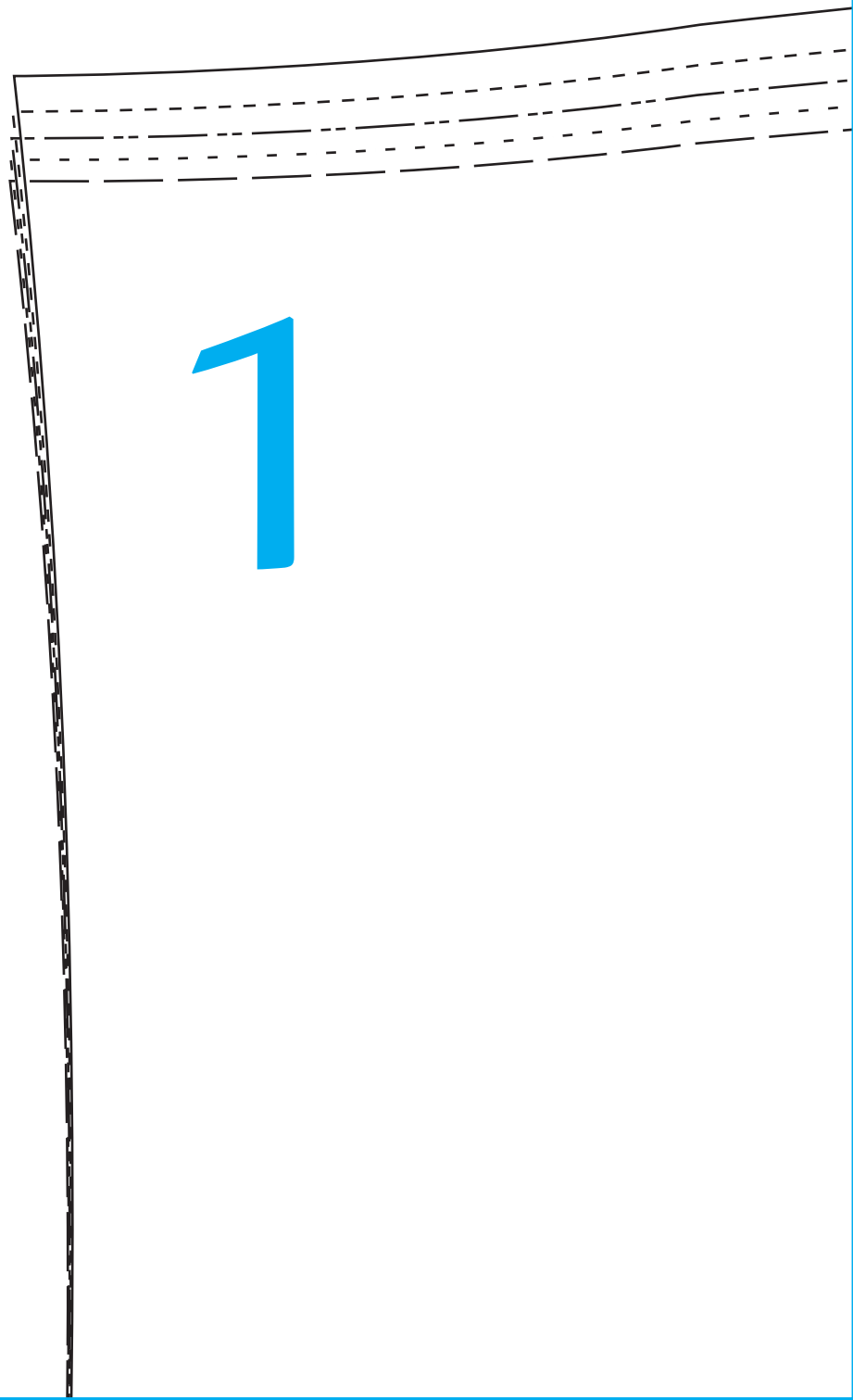
# Sleeve

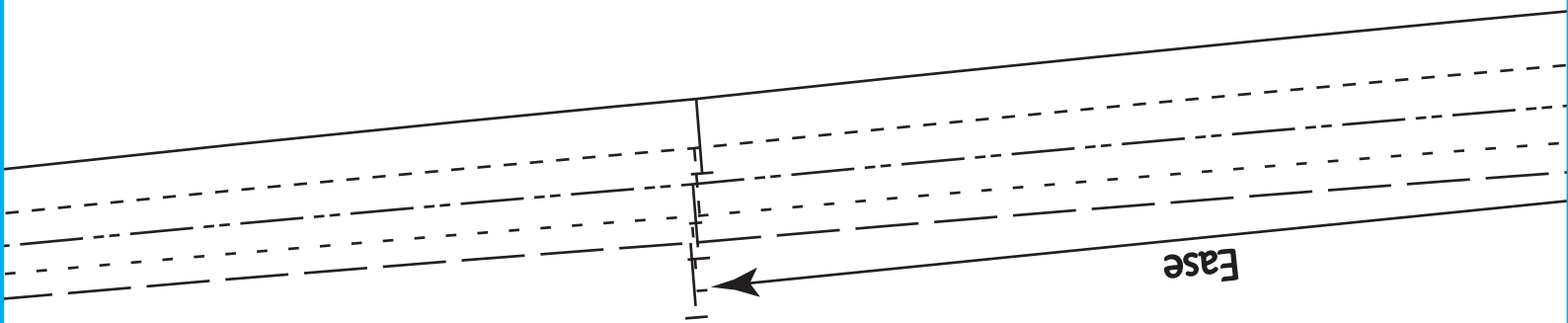
Cut one pair



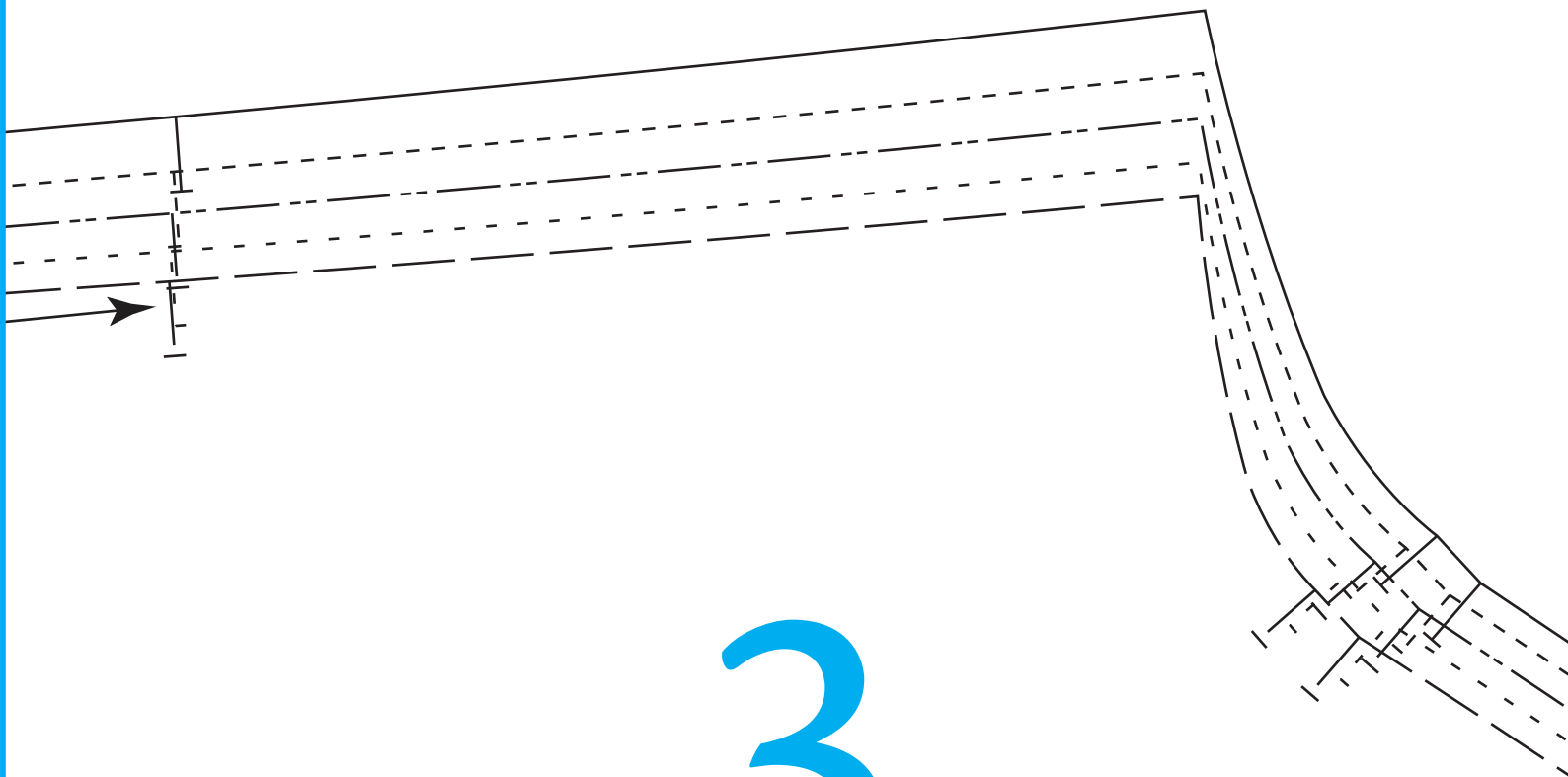
# Sleeve

Cut one pair



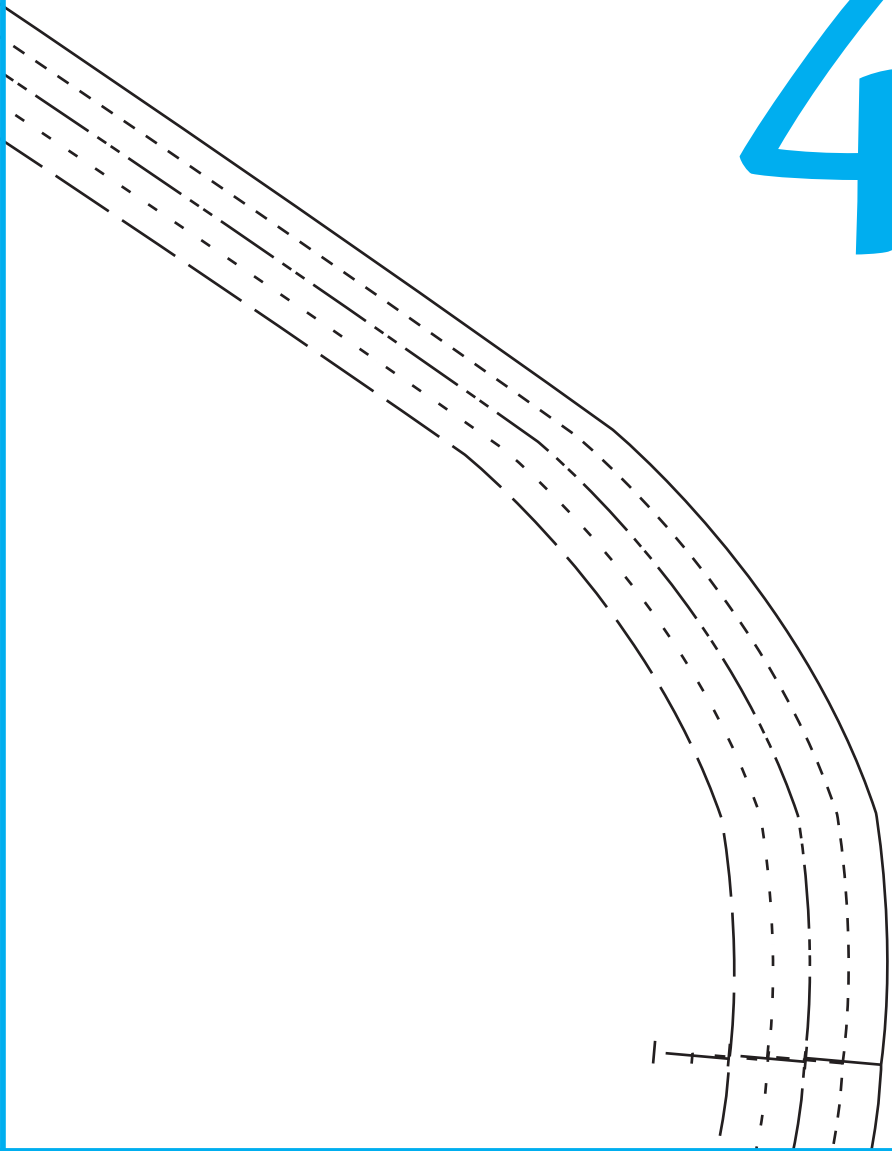


2

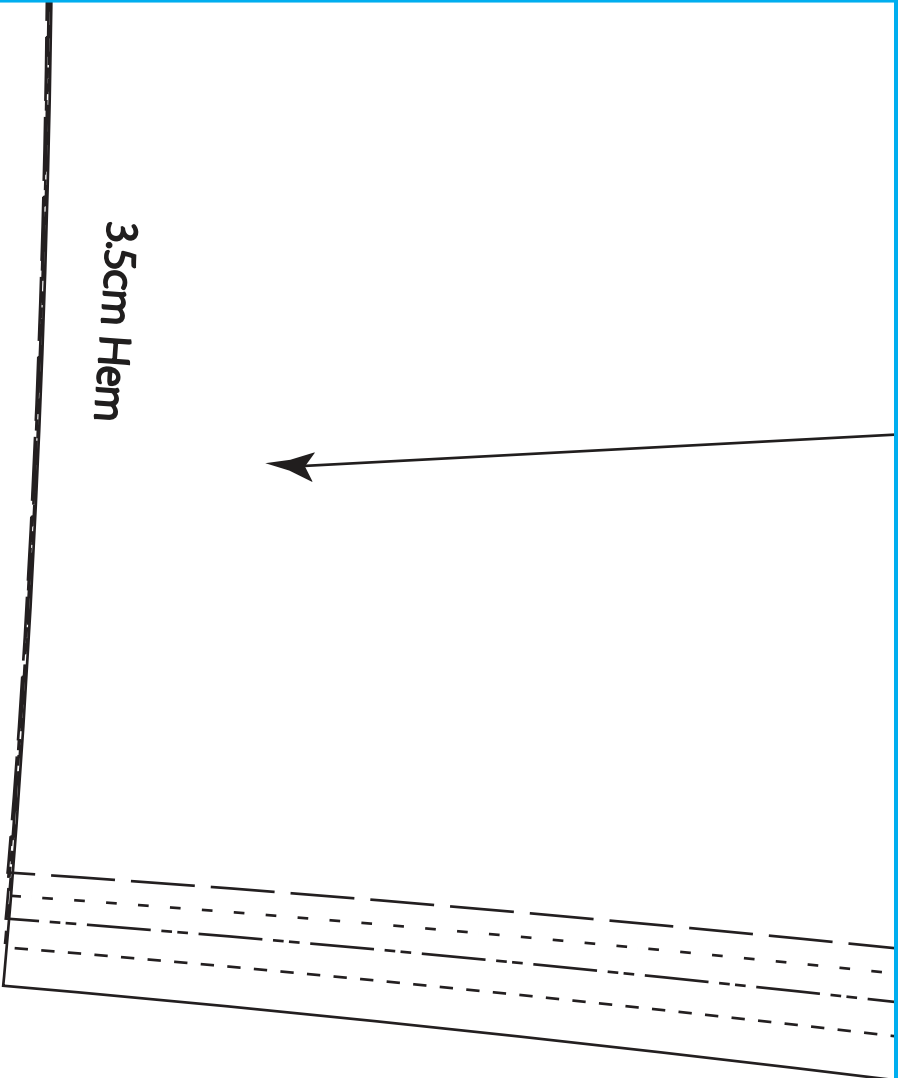


3

4



# 5



3.5cm Hem

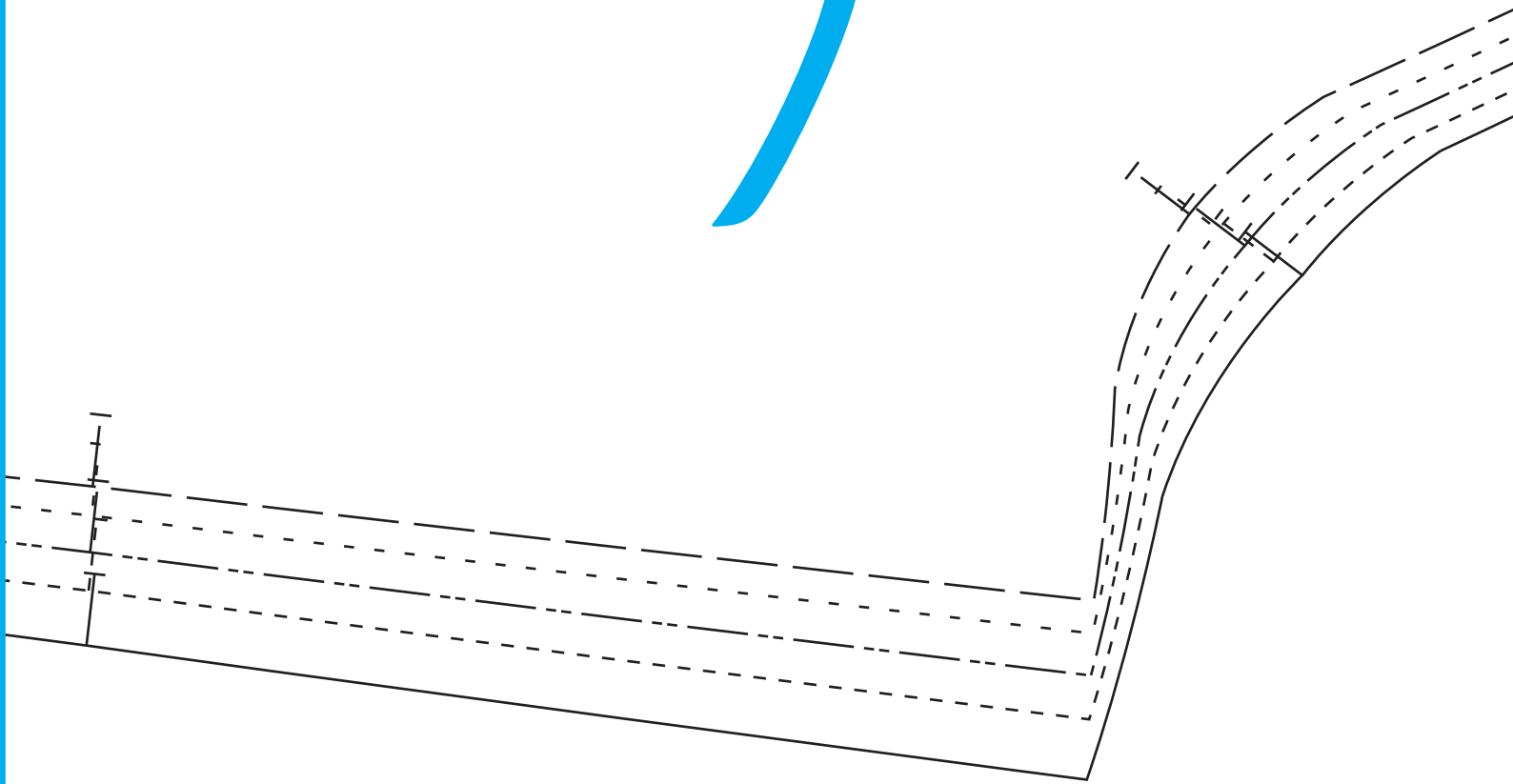
Grain Line

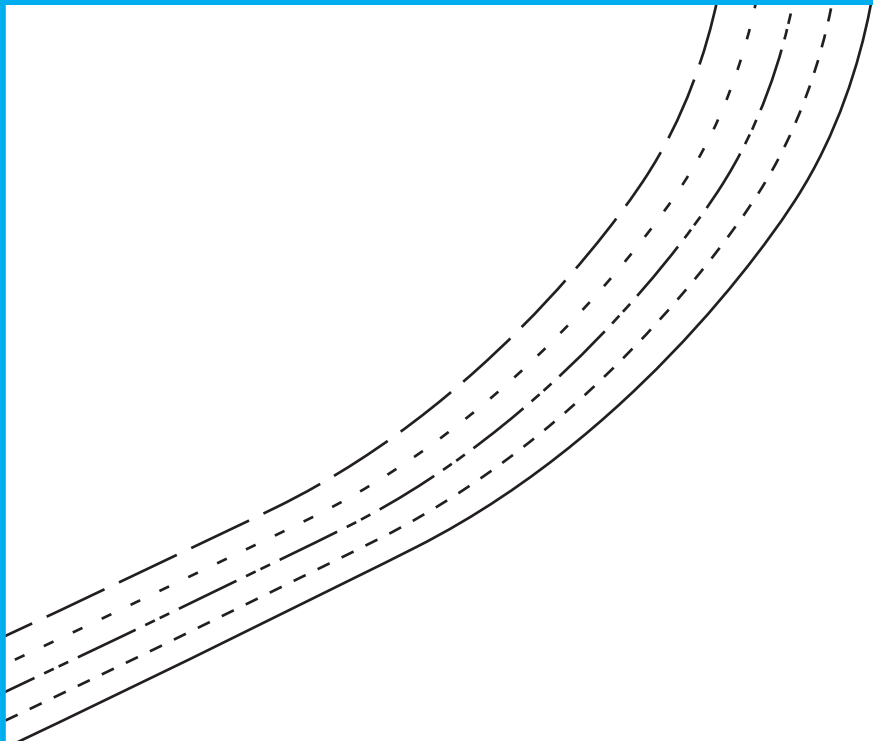
6





7





8