

VINTAGE LADY DRESS

Free Pattern Size 5, 6, 7



VINTAGE LADY DRESS PATTERN

Supplies

- 1.5 Yards of fabric for main outer dress
- 0.5 Yard for lining and collar
- 4 buttons

Printing and cutting the Pattern

- Print front bodice A and bodice B and tape them together. Do the same for the back.
- Cut 1 piece on fold for Front Bodice of main and lining fabric
- Cut 2 opposite pieces of Back Bodice of main and lining fabric
- Cut 4 pieces of collar

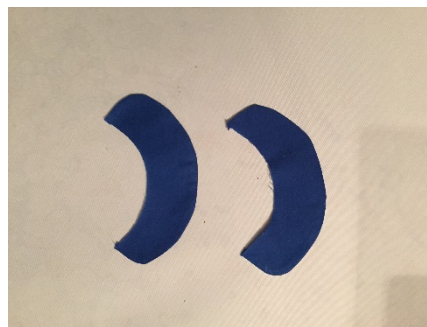
Step 1

Sew the two back bodice piece to the front bodice on the shoulder using 1.5 cm seam allowance. Repeat for lining



Step 2

Sew two pieces right sides together of the longest sides of the collar. Turn inside out and iron out the shape neatly.



Step 3

Pin and sew the collar to the right side of the bodice. Overlap the collars about ½" in front. Use 1 cm seam allowance.



Step 4

Place the lining and the main bodice right sides together. Sew the backs together using 0.5 cm seam allowance, all around the neck and armholes using 1.5 cm seam allowance. Leave the sides and bottom open. Turn inside out and iron.



Step 5

With right sides together, sew the sides of the front and back bodice together. Repeat for the lining. Use 1.5cm seam allowance.

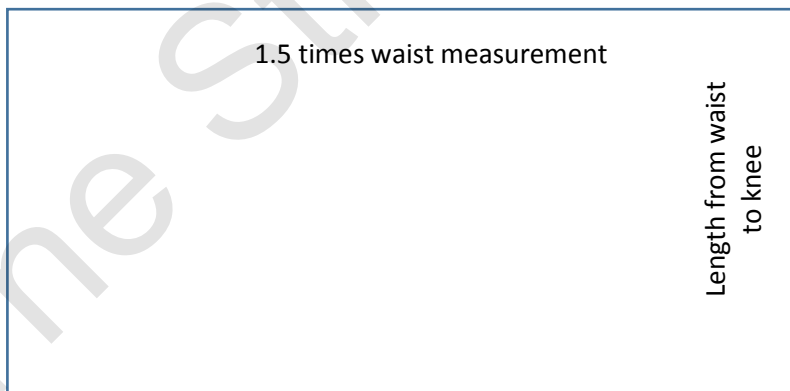


Step 6

Sew 4 button holes on the back. Ensure you have about 1" of the bottom edge free to sew the bottom skirt.

Step 7

Cut out 2 skirt pieces. See below for measurements



X 2

Step 8

Sew the short side of the skirt pieces together using 1.5 cm allowance. Zig zag stitch so the edges do no fray.

Step 9

Sew 2 gather stitches (stitches with the longest length on your machine) about 1" apart all the way around the skirt pieces.

Pull the thread and gather the skirt until it fits the bottom of the bodice.



Step 10

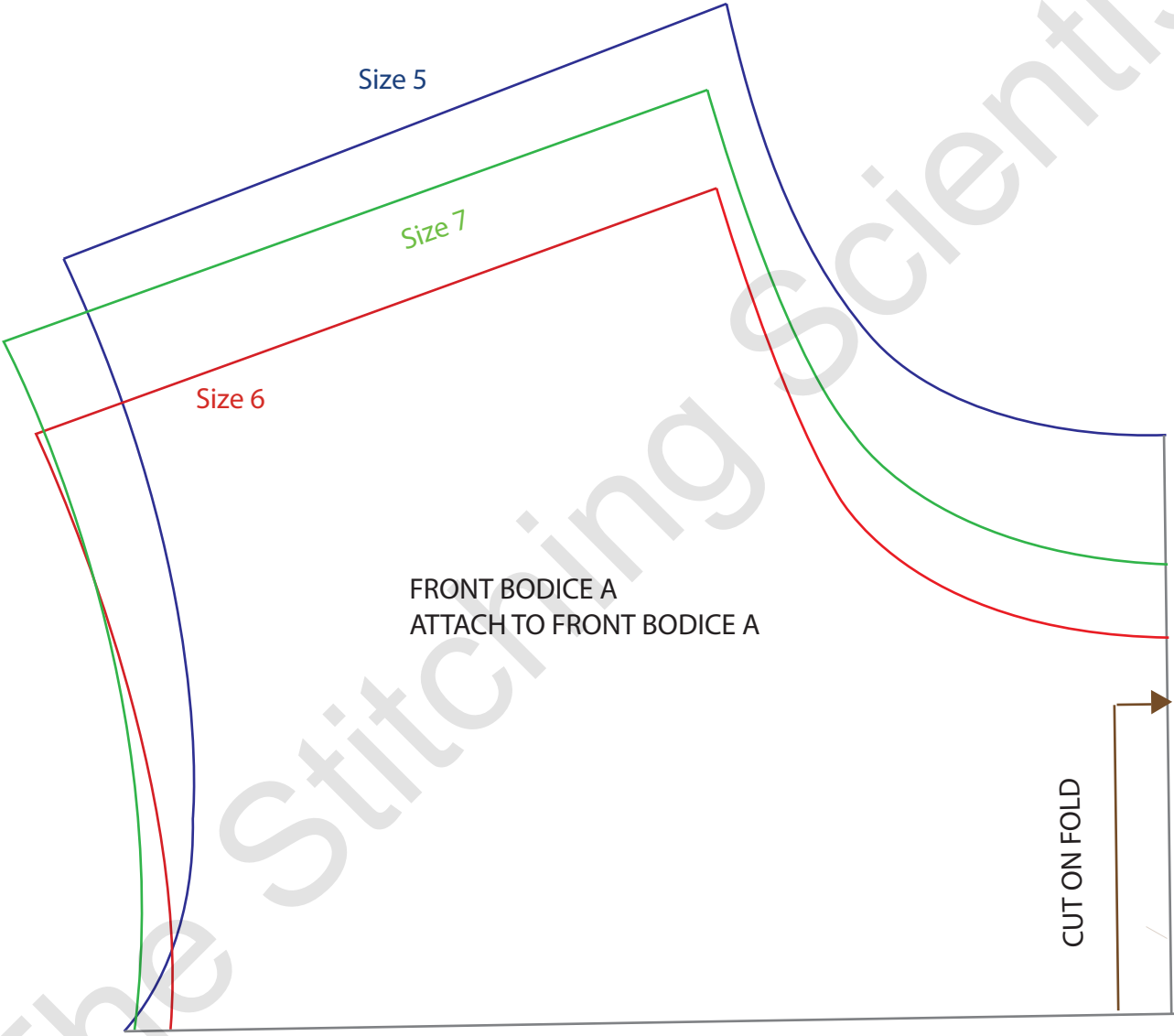
Turn the skirt inside out and insert the bodice inside, aligning the raw edges. Sew with 1.5cm seam allowance.



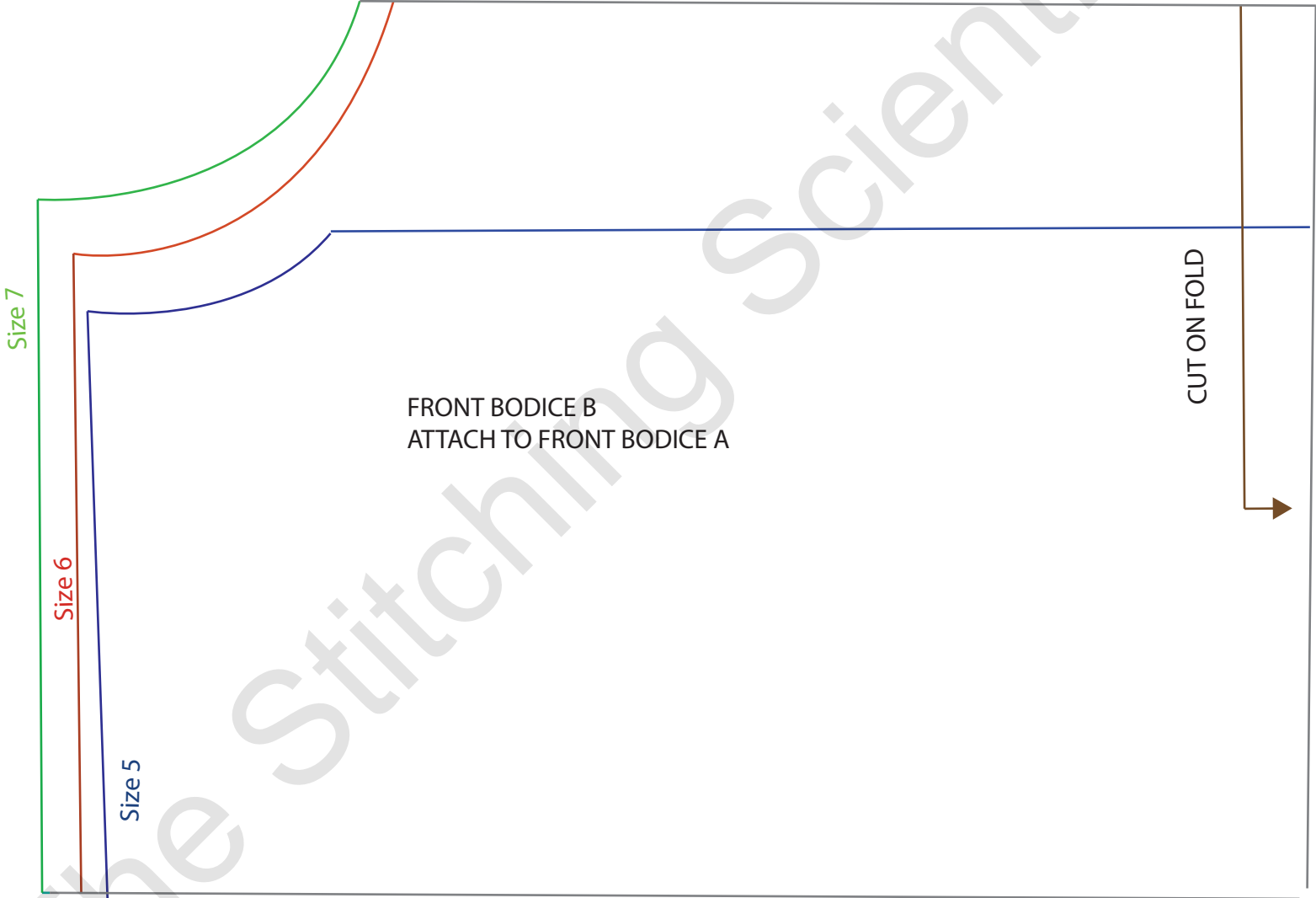
Step 11

Hem the bottom of the skirt and sew on buttons.

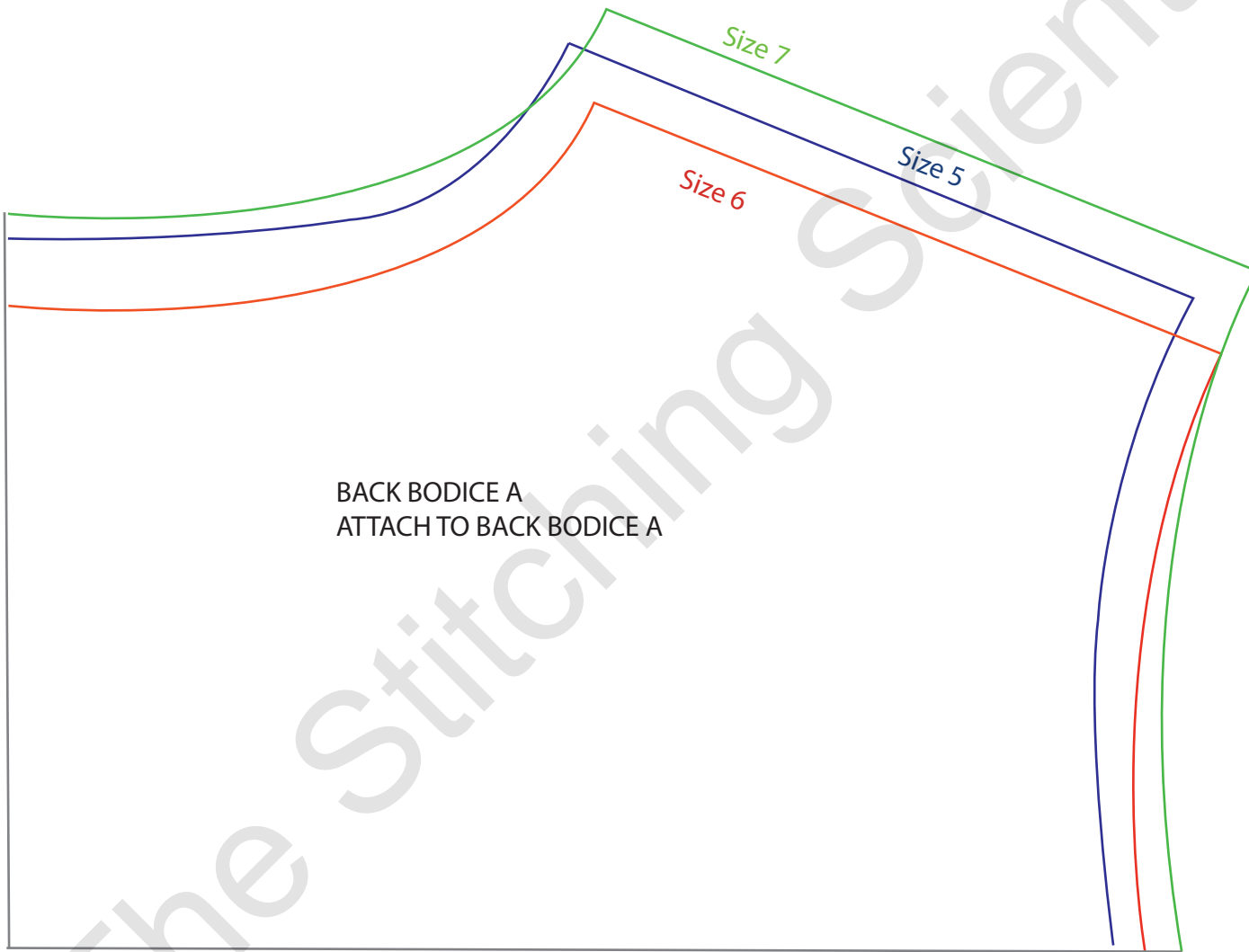
VINTAGE LADY
DRESS PATTERN



VINTAGE LADY
DRESS PATTERN

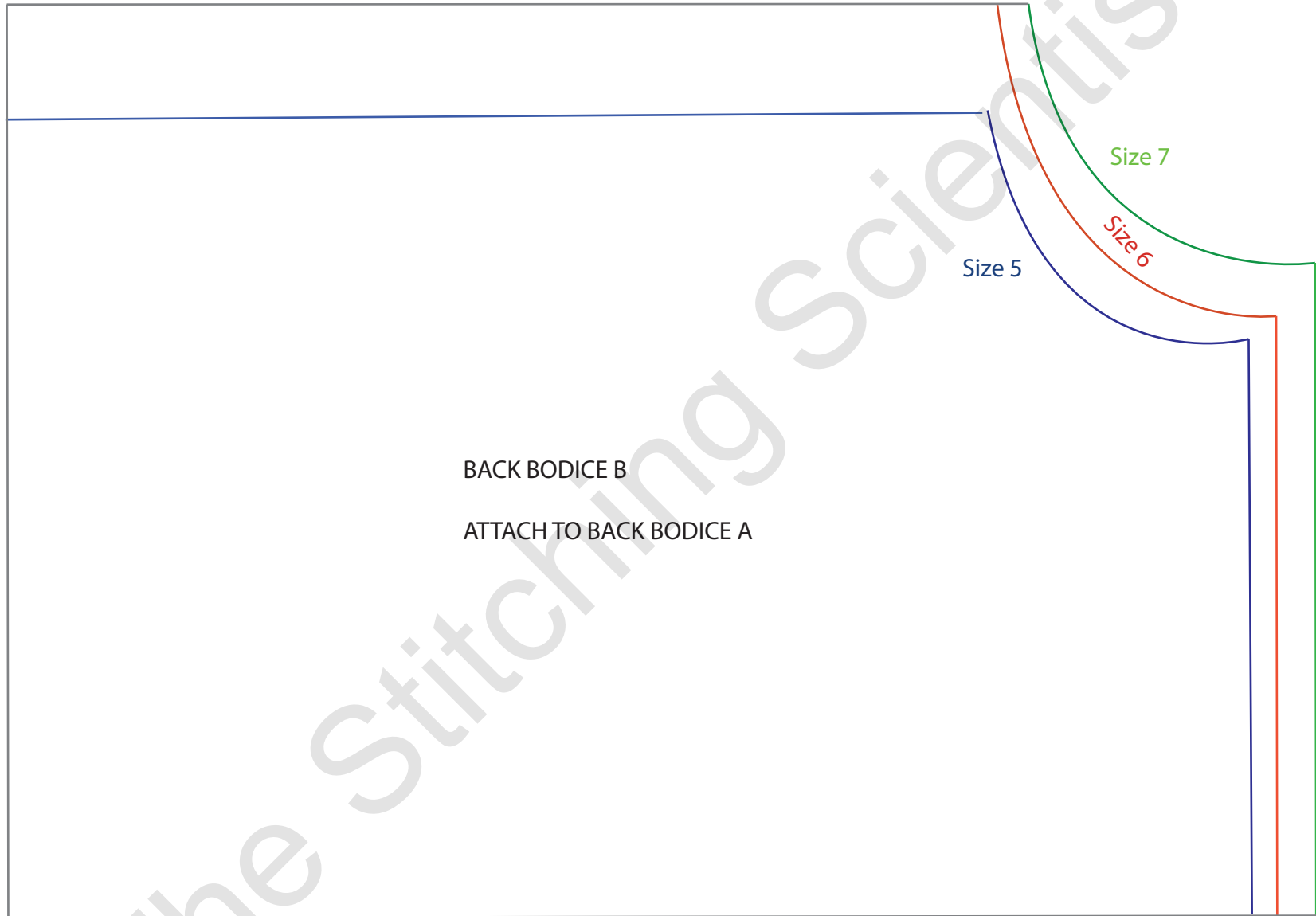


VINTAGE LADY
DRESS PATTERN



BACK BODICE A
ATTACH TO BACK BODICE A

VINTAGE LADY
DRESS PATTERN



VINTAGE LADY
DRESS PATTERN

Size 7

Size 6

Size 5

