

ՏԵՎ ՄԵՐԱՎԵՆՈՍ  
“A modern make on vintage style”  
[VeraVenus.com](http://VeraVenus.com)



## Wrap Front Jersey Dress

2 metres( 2 $\frac{1}{3}$  yards) of 160 cm wide jersey fabric

\*Knit fabric only- not suitable for woven fabrics\*

Allow more fabric for longer skirt or narrower fabric.

Wrap-over side pleated fronts, 1/3 circle skirt,  
elbow length sleeves, tie belt.

To fit figure:

bust- 86-92 cms/ 34ins-36ins

waist- 68-74 cms/ 28ins-30ins

Pattern measures:

bust- 86 cms/ 34ins

waist- 71 cms/ 28ins

hips- 120 cms/ 47ins

back neck to waist- 40 cms/ 15 $\frac{3}{4}$ ins

shoulder- 11.5 cms/ 4 $\frac{1}{2}$ ins

sleeve length- 37 cms/ 14  $\frac{1}{2}$ ins

sleeve hem circumference- 26 cms/ 10  $\frac{1}{4}$  ins

skirt length front waist to hem- 61 cms/ 24 ins

skirt hem circumference- 216 cms / 85ins

# SWEET SPRING STYLE

*Make a fun and flirty jersey wrap dress for work or play. By Jeanne Spaziani*

## YOU WILL NEED

- Pattern templates on page 90
- 2m x 160cm jersey (if using narrower fabric or a directional print allow for more)
- 1m fusible knit interfacing
- A sewing machine that does stretch stitches as well as straight stitches
- Long ruler and pencil
- 24cm of 3mm wide elastic to stabilise shoulder seams (optional)

Many people think an overlocker is required to sew stretch fabrics, but it really isn't. Though I have an overlocker I still prefer using my trusty 1964 Bernina for my jersey projects. As well as a straight stitch it has three types of stretch stitches: 1 – the basic zigzag – best for neatening seam allowance edges and attaching elastic more than for sewing seams as zigzagged seams can look not so nice from the right side of the garment. 2 – the wave stitch, which is simply straight stitches that run in a wavy line and is the least stretchy of the three. I use this for hems sometimes. 3 – the real stretch stitch, which I would describe as three straight stitches followed by a single zigzag. It's a very stretchy stitch and seams look best from the right side when using this stitch. This is the one I use to sew all my stretch seams.

Experiment on some jersey scraps with the stretch stitches your machine does... try different length and width settings too to see how they affect the stitches.

The pattern includes 1cm seam allowances and 2cm hems. If you want the skirt or sleeves longer simply lengthen the pattern by the desired amount.

**1.** Cut out all the dress and interfacing pieces from the printed pattern on page 90. The interfacing strips for the skirt and sleeves are drawn directly onto the interfacing with a ruler using the

measurements written on the pattern. I think you get more accurate strips this way rather than pinning long skinny patterns onto the fabric. However if you prefer paper you can make pattern strips for the skirt and the sleeves using the measurements given.

**2.** Fuse the facings and belt interfacing pieces onto the wrong side of their matching jersey pieces. Leave the hem strips off for now as it is better to wait until later on in the construction in case you want to change the sleeve or skirt length.

**3.** Join the two front bodices to the back bodice at the shoulder seams (pin them right sides together and sew with a stretch stitch). Join the fused front neck facings to the back facing. To neaten the edge, the facing can be oversewn with a small zigzag, overlocked or simply pinked. If you wish to stabilise the bodice shoulder seams now is the time to zigzag some 3mm elastic cut to the length of the shoulder onto the seam allowances and close to the stitching line. Press the seam allowances to the back.

**4.** Pin the facing to the neckline, right sides together and sew. Here I used a straight stitch. Do allow the fronts to stretch a little while you sew but only a very little. Clip into the curved areas of seam allowance near the shoulders to release the curves. Next, sewing from the right side, understitch the entire neckline so the facing will turn in nicely. I used a straight stitch here too to help control the neck.

**5.** Working from the right side of the fabric pin the three pleats in place on each of the fronts: keep the facing free and follow the direction of the arrows on the pattern. Once the pins are in place fold the facing in place so it backs the pleats and stay-stitch them in place onto the facing seam allowance.

**6.** Pin and sew (stretch stitch) each sleeve into its corresponding armhole, matching the balance notches. Press the allowances towards the sleeves. ▶

## Tip

I like to keep shoulder seams in jersey garments the correct length by this method: cut two pieces of 3mm wide elastic the full length of the shoulder seams (measure the pattern). After joining the shoulder seams together simply zigzag an elastic piece in place, flat with no stretching, along the first sewing line. This will keep the seam from 'growing' yet still allows it to stretch when it needs to.



# Wrap Front Jersey Dress

2 metres( 2 $\frac{1}{3}$  yards) of 160 cm wide jersey fabric

\*Knit fabric only- not suitable for woven fabrics\*

Allow more fabric for longer skirt or narrower fabric.

Wrap-over side pleated fronts, 1/3 circle skirt,  
elbow length sleeves, tie belt.

To fit figure:

bust- 86-92 cms/ 34ins-36ins

waist- 68-74 cms/ 28ins-30ins

Pattern measures:

bust- 86 cms/ 34ins

waist- 71 cms/ 28ins

hips- 120 cms/ 47ins

back neck to waist- 40 cms/ 15 $\frac{3}{4}$  ins

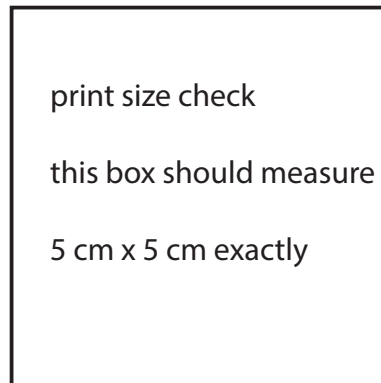
shoulder- 11.5 cms/ 4 $\frac{1}{2}$  ins

sleeve length- 37 cms/ 14  $\frac{1}{2}$ ins

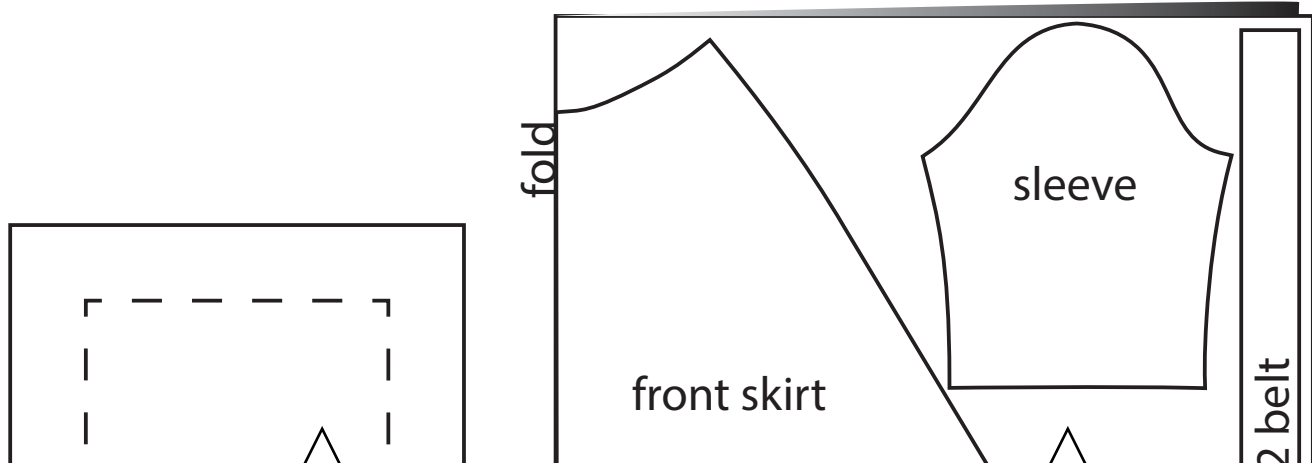
sleeve hem circumference- 26 cms/ 10  $\frac{1}{4}$  ins

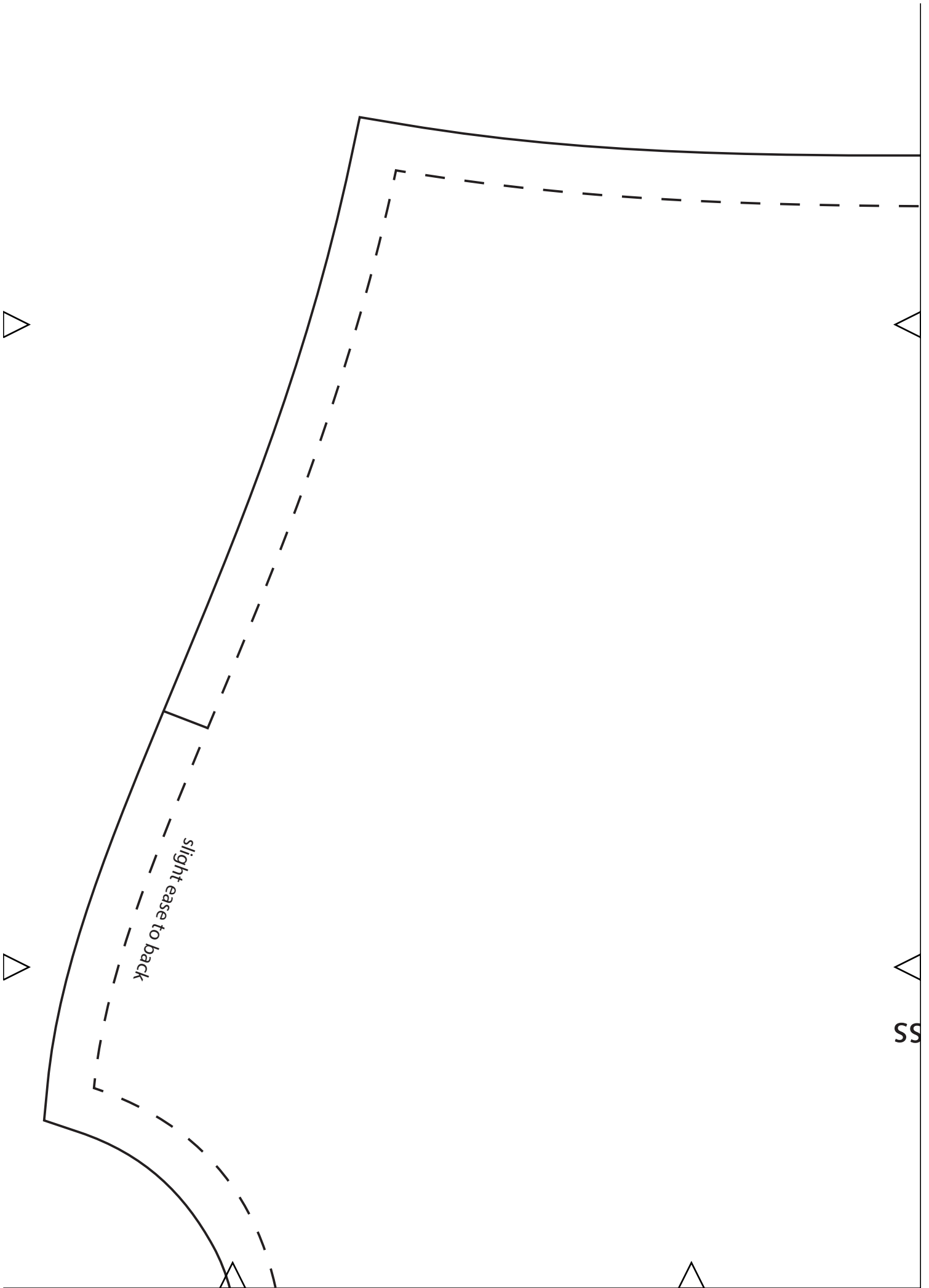
skirt length front waist to hem- 61 cms/ 24 ins

skirt hem circumference- 216 cms / 85ins



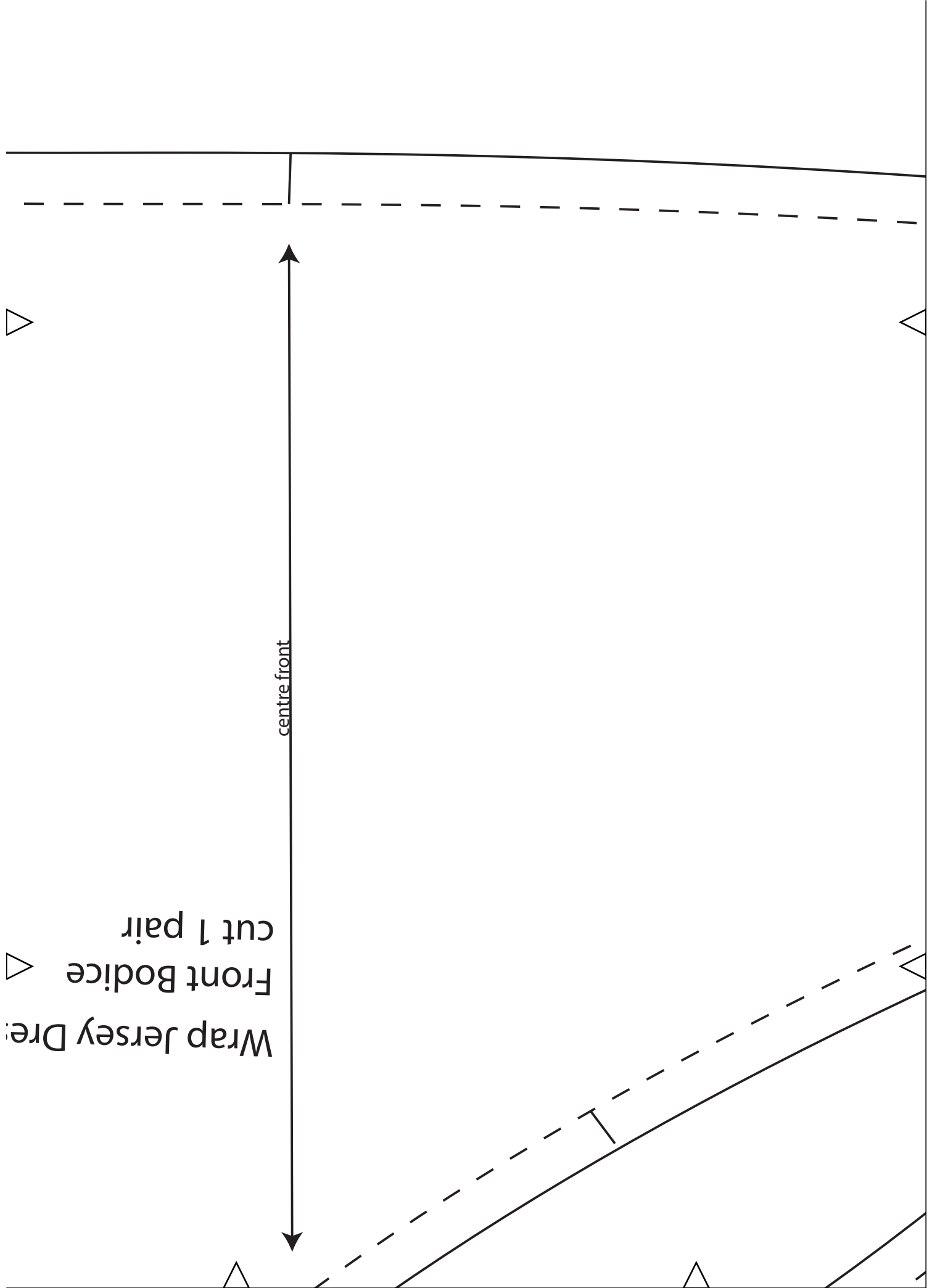
## Jersey Cutting Layout 2 metres x 160 width



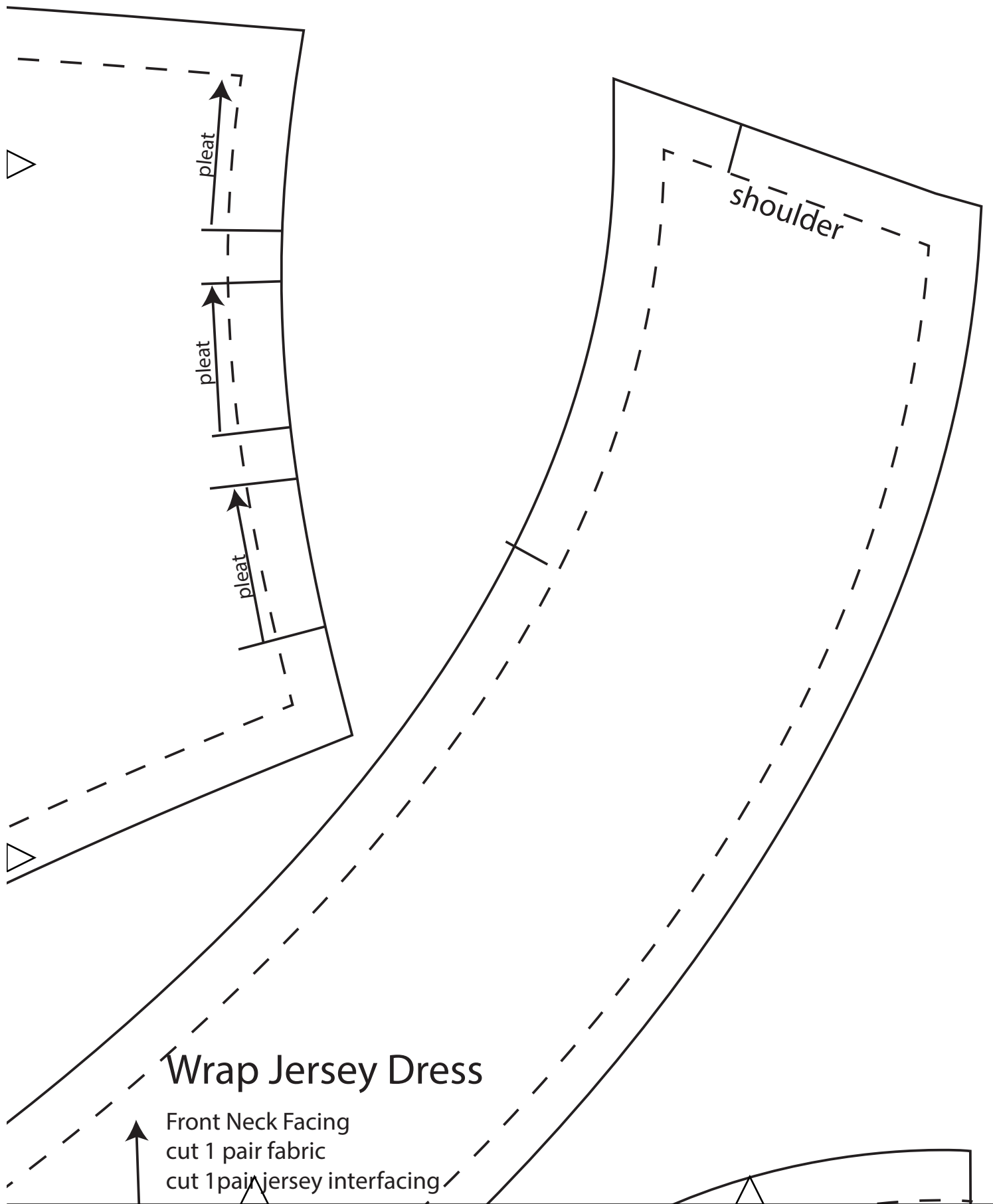


*slight ease to back*

SS



Wrap Jersey Dress  
Front Bodice  
cut 1 pair



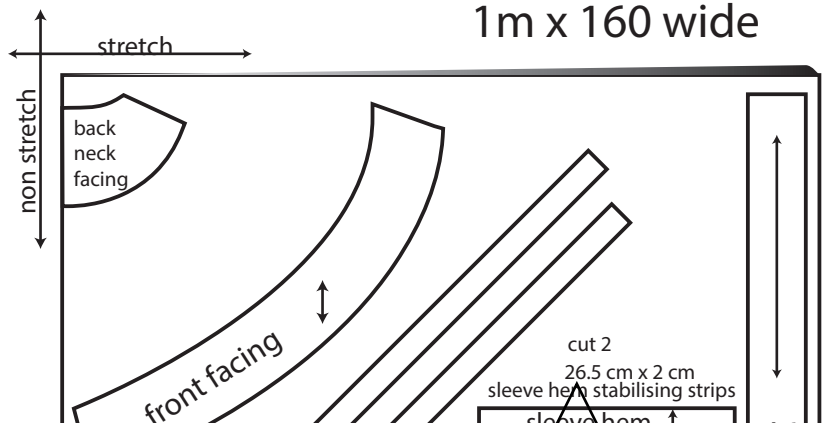
# Wrap Jersey Dress

- Front Neck Facing  
cut 1 pair fabric
- cut 1 pair jersey interfacing

1/2 Belt

cut 2 fabric + 2 jersey interfacing

### Stretch Interfacing Cutting Layout 1m x 160 wide



fold

back bodice

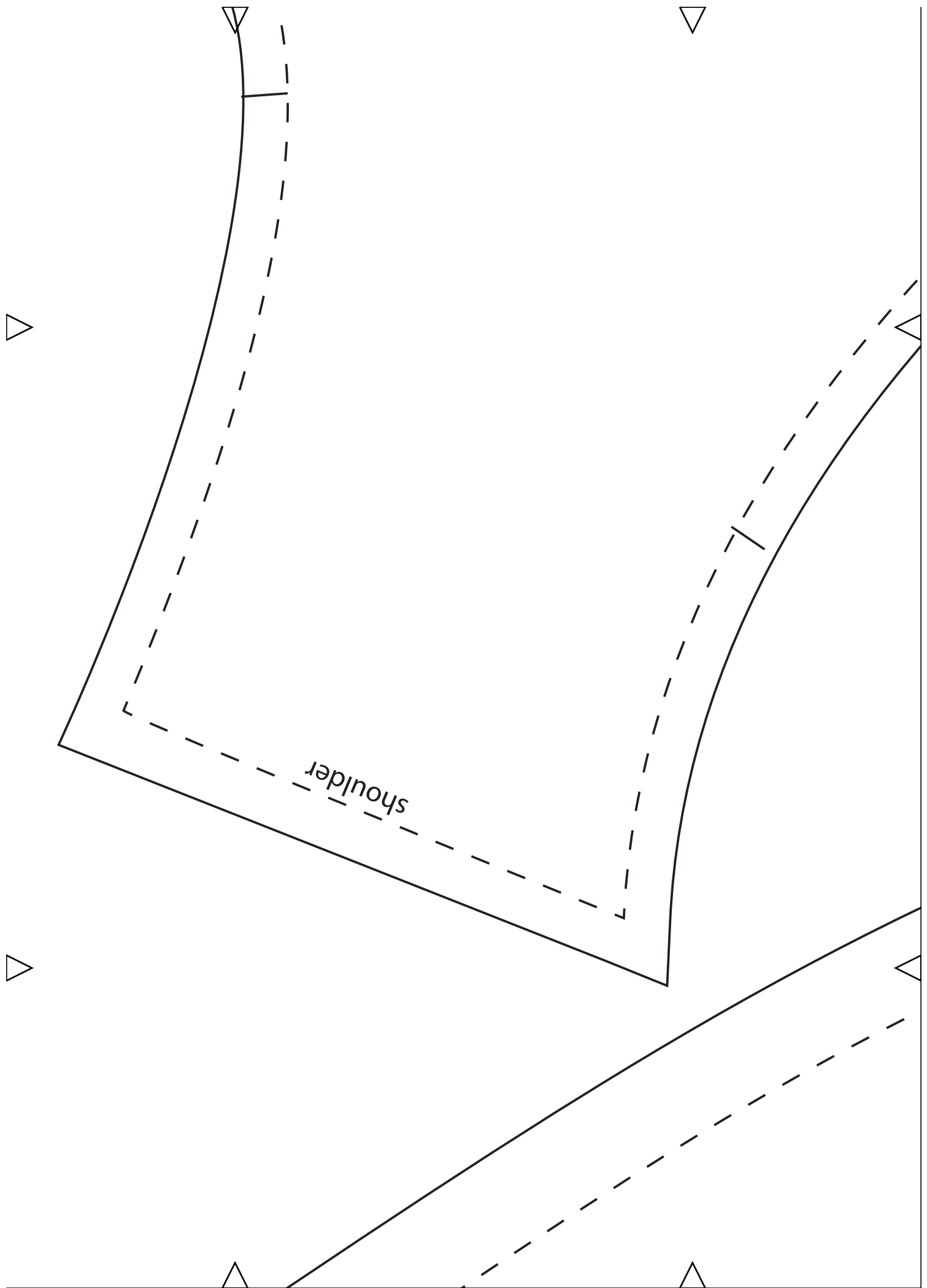
front bodice

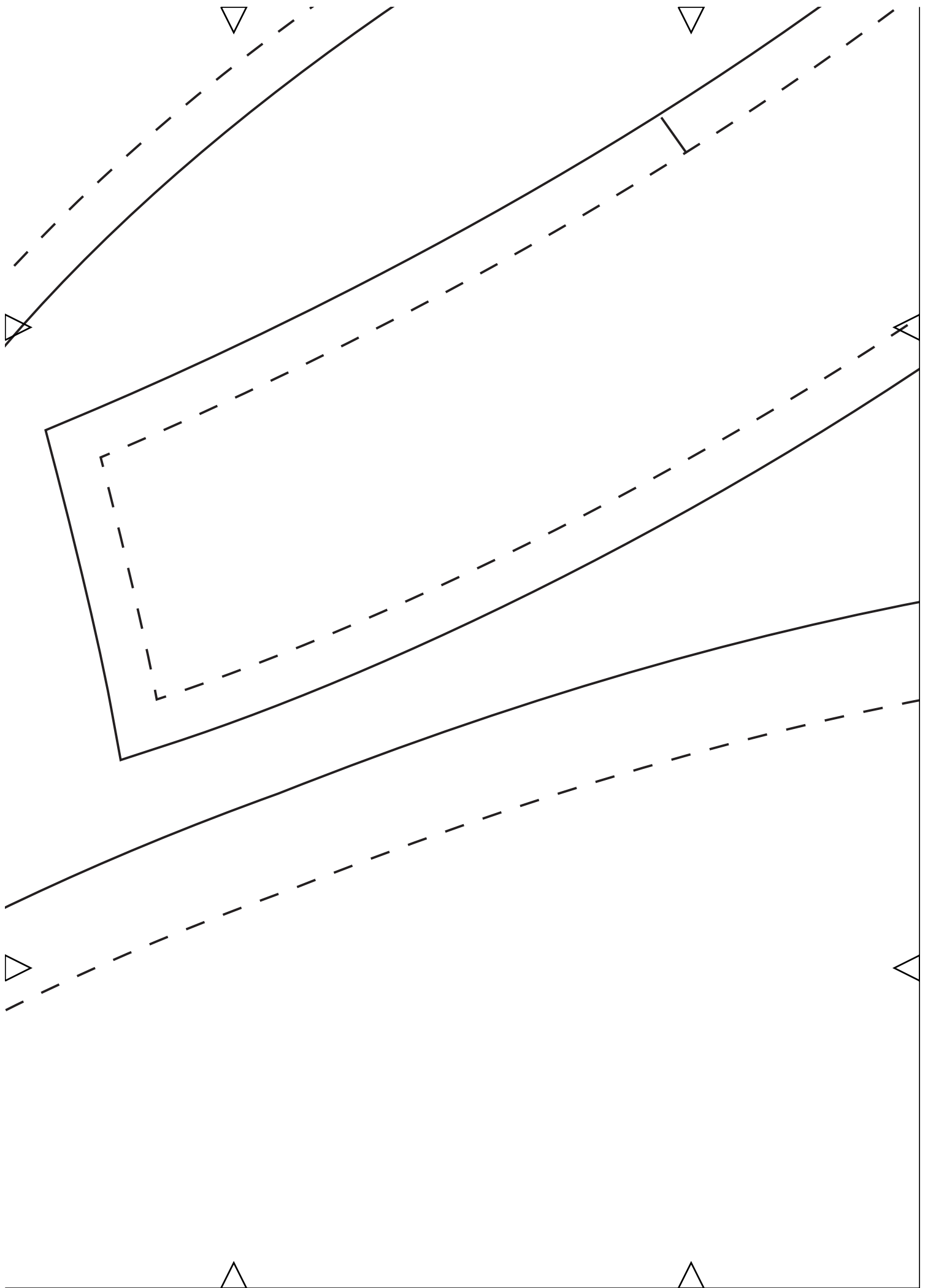
front facing

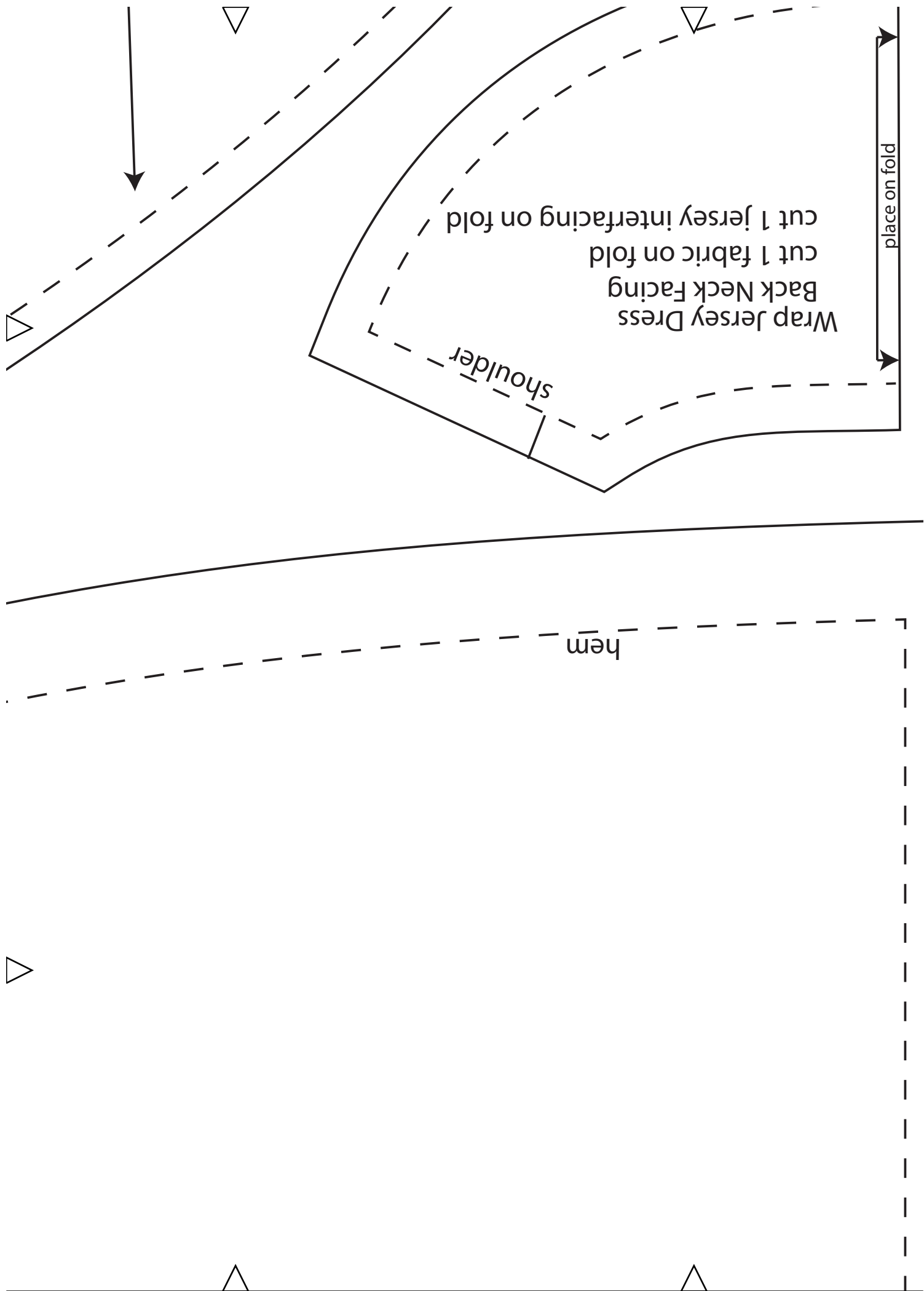
back skirt

1/





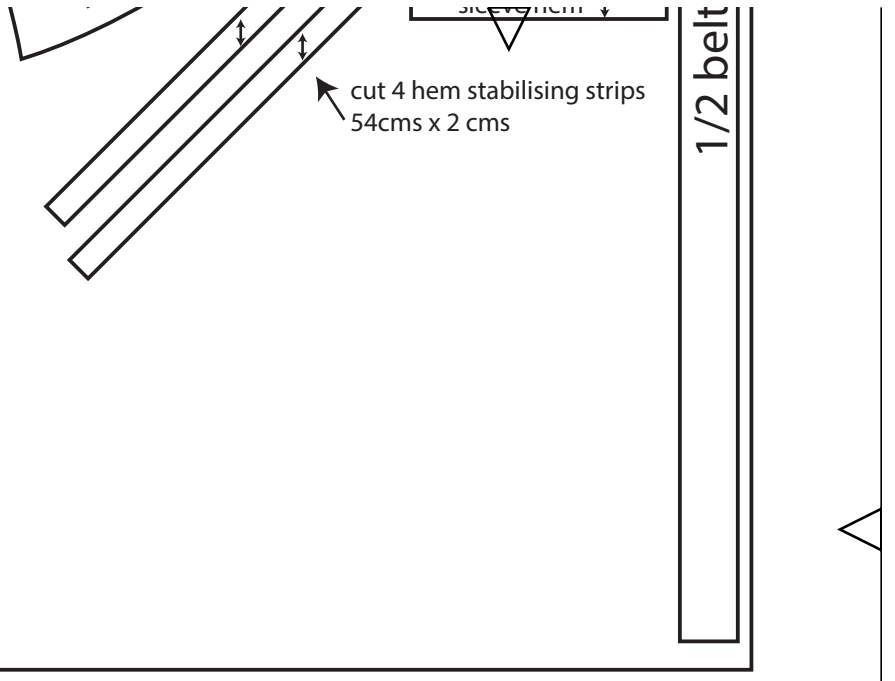
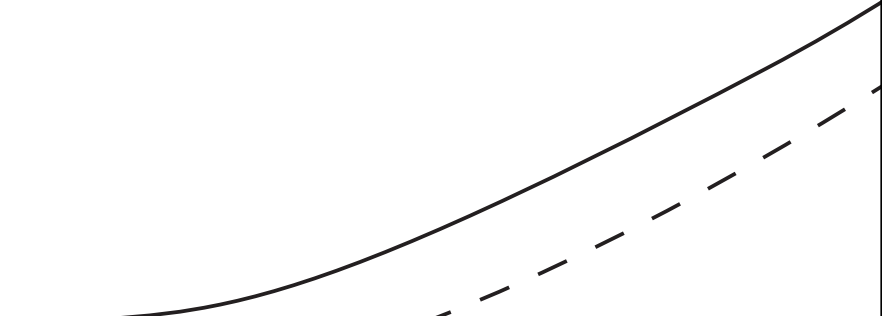
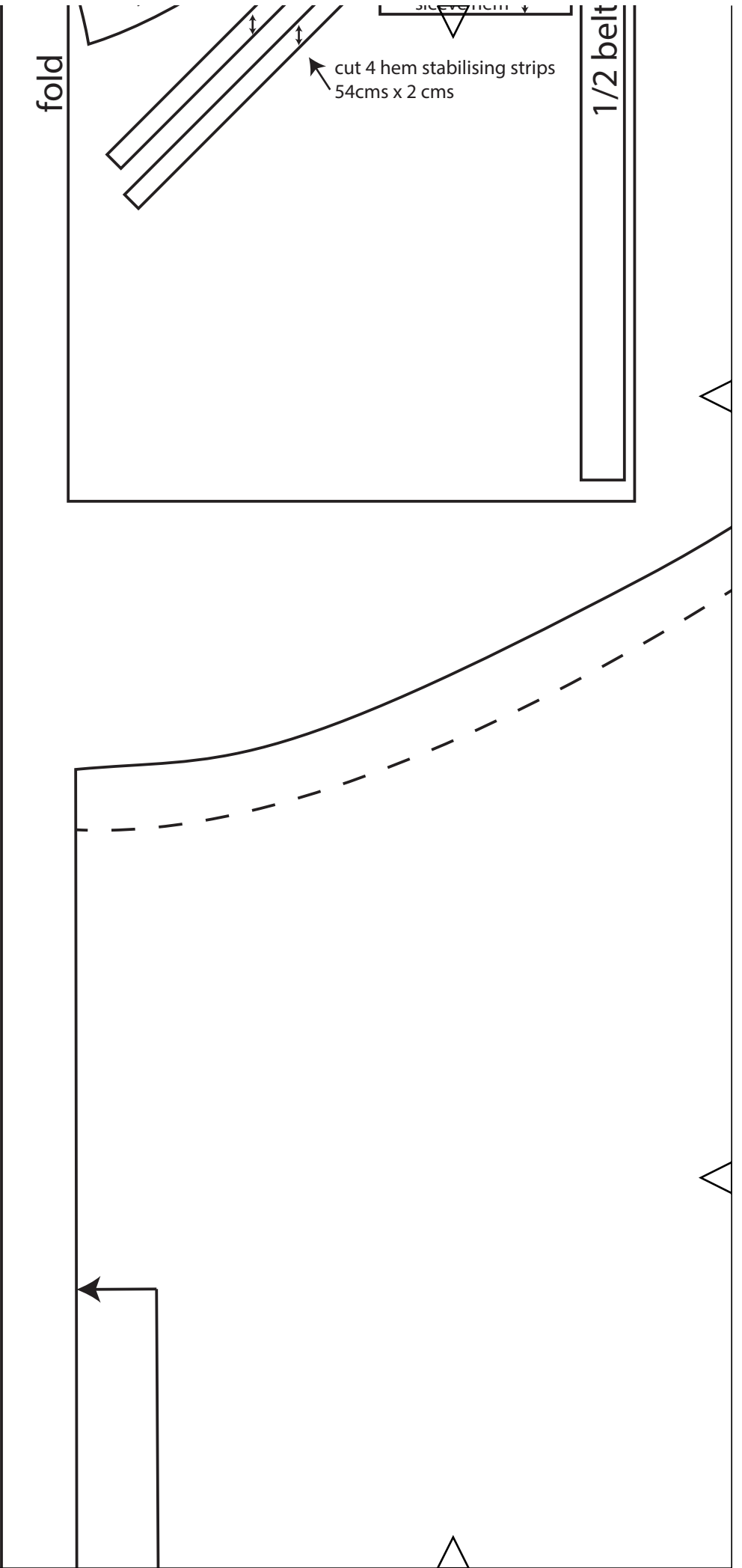




1

# Wrap Jersey Dress

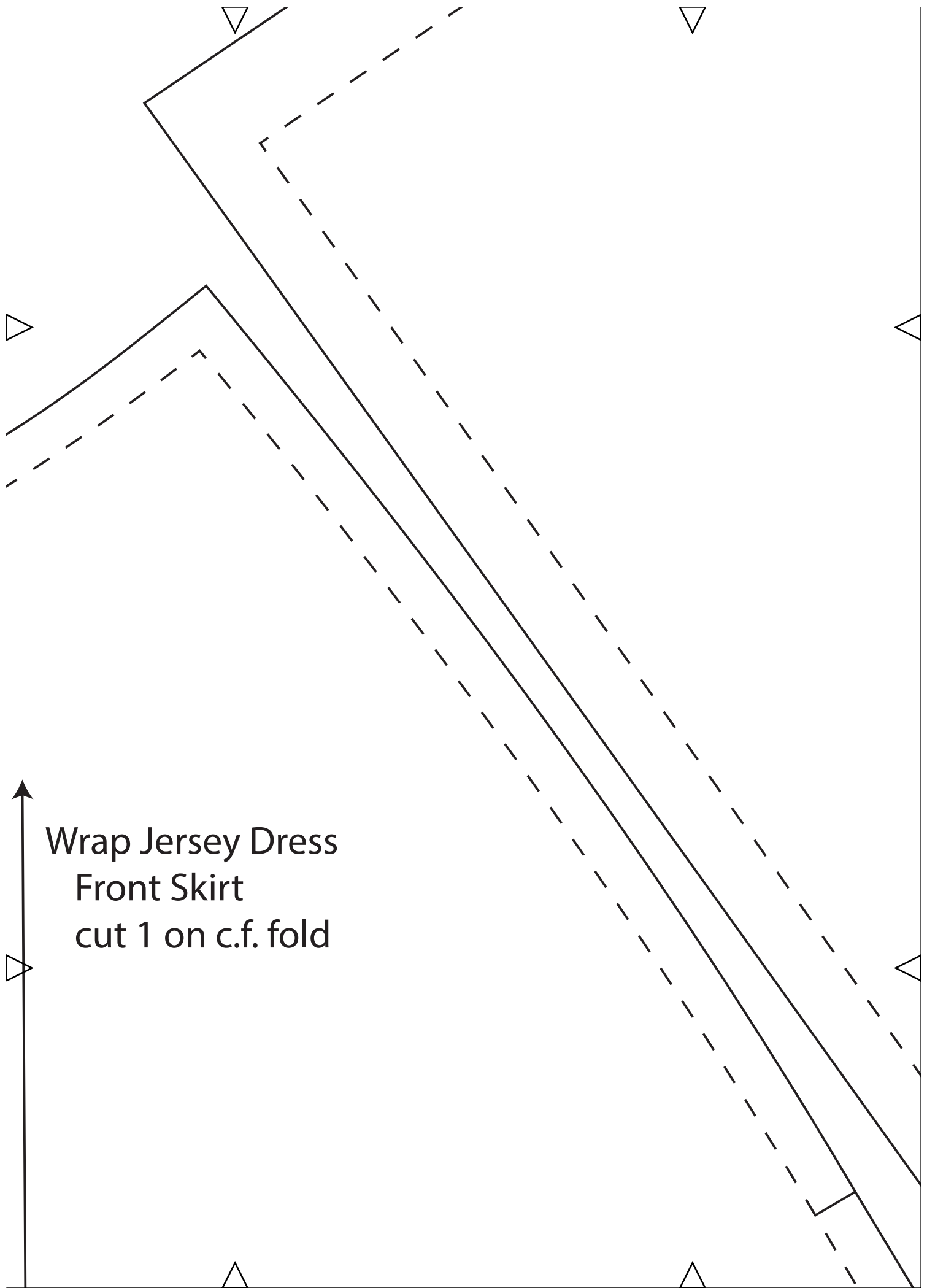
C



cut 4 hem stabilising strips  
54cms x 2 cms

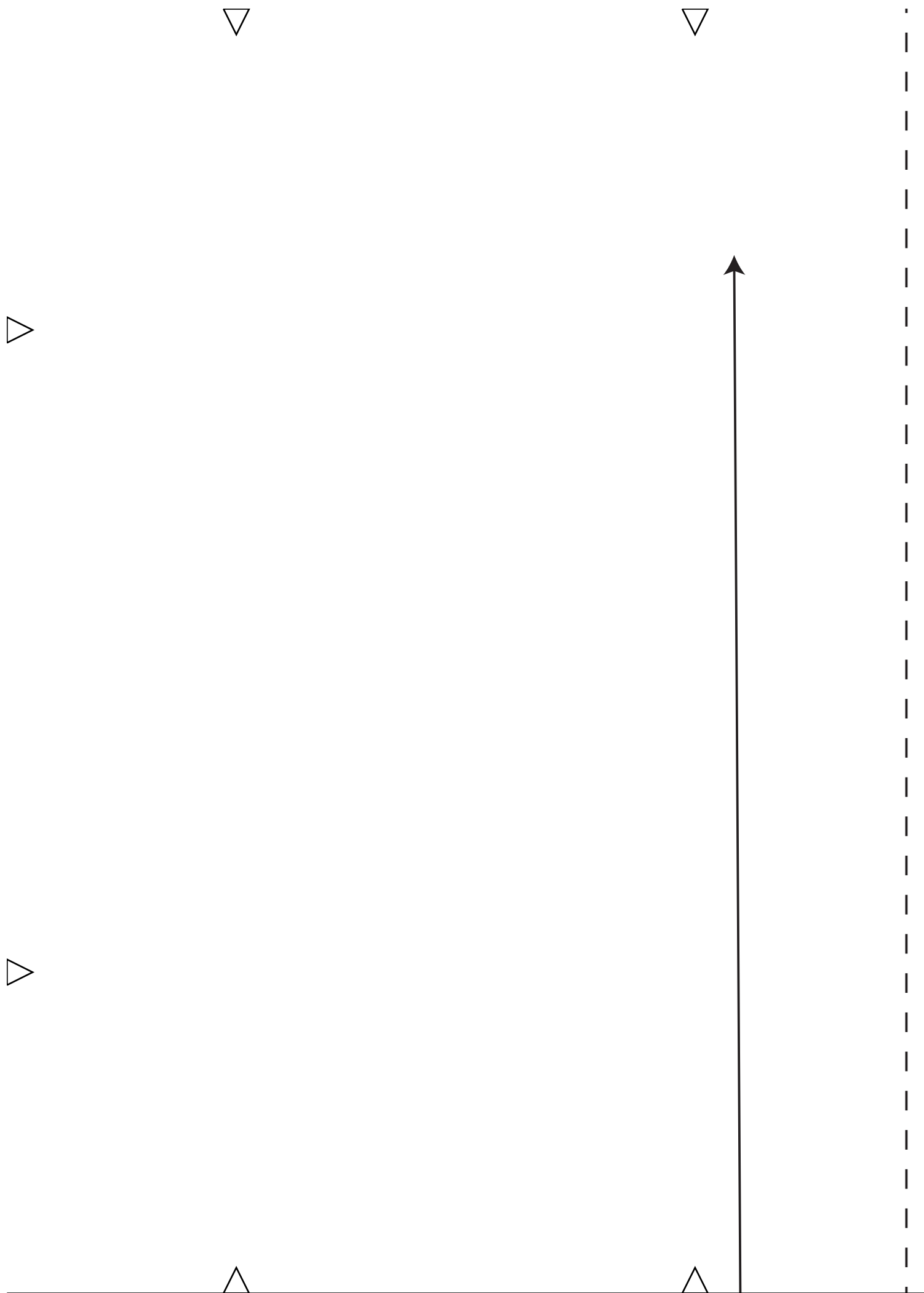
1/2 belt





Wrap Jersey Dress  
Front Skirt  
cut 1 on c.f. fold



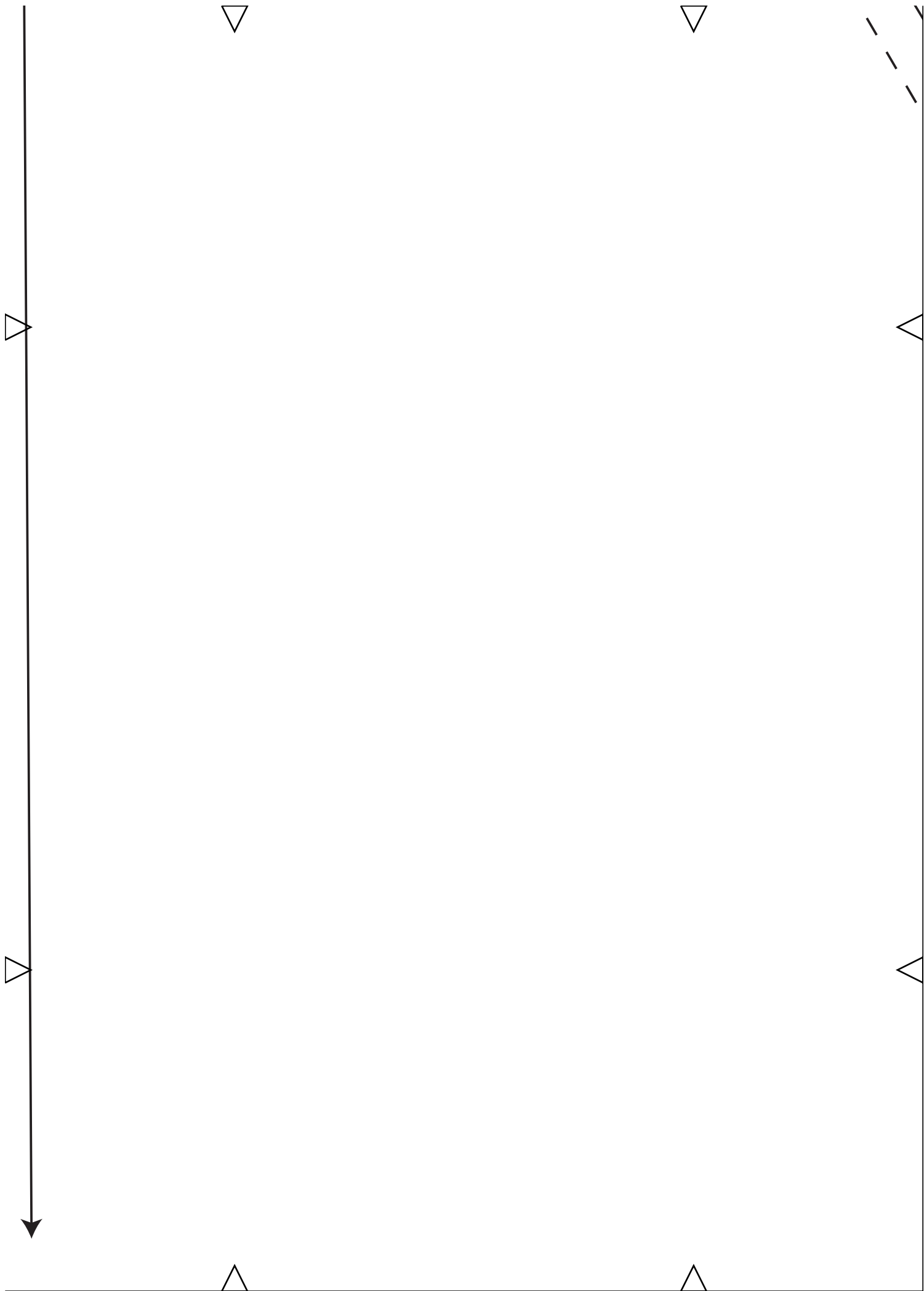


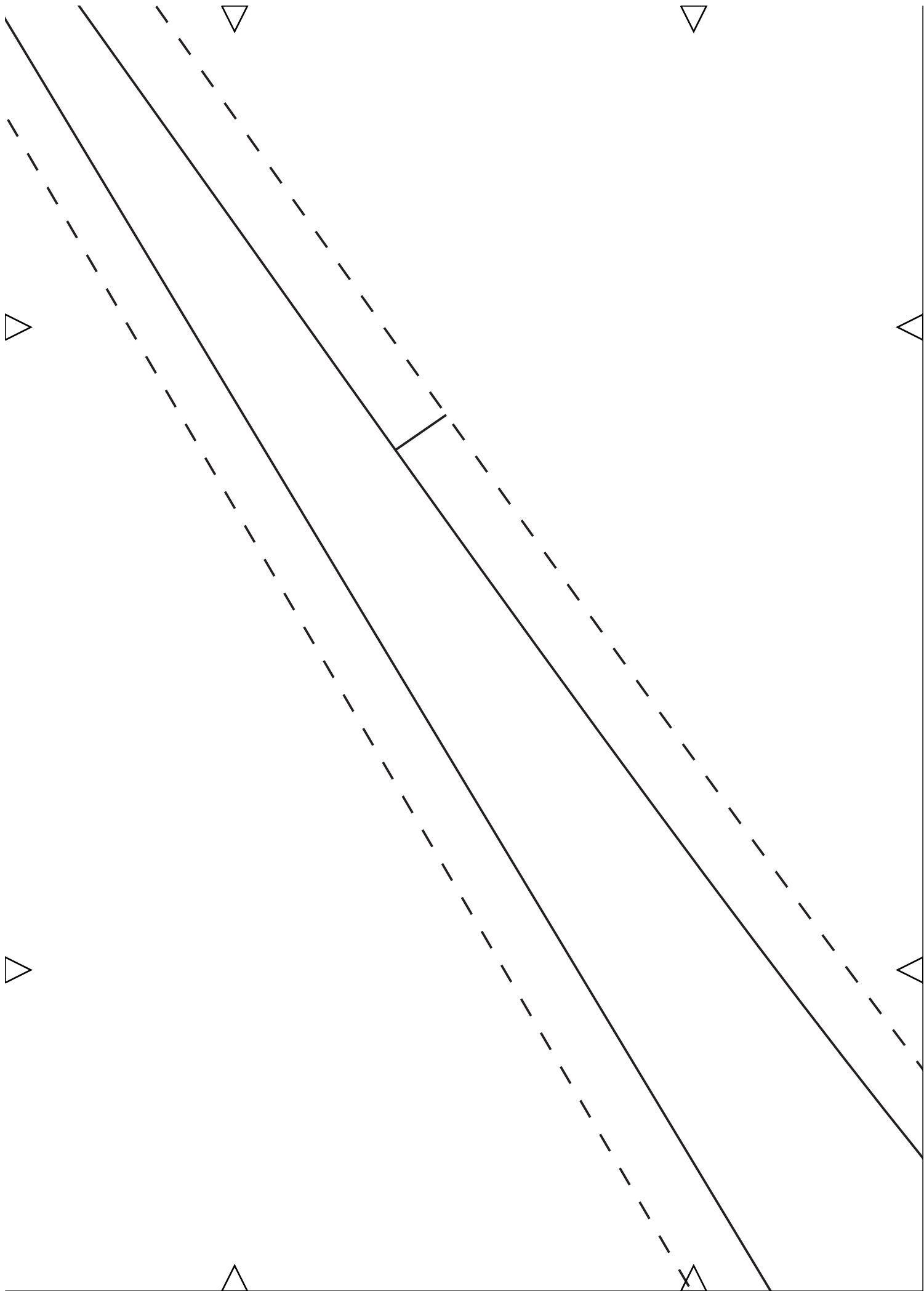


place on fold

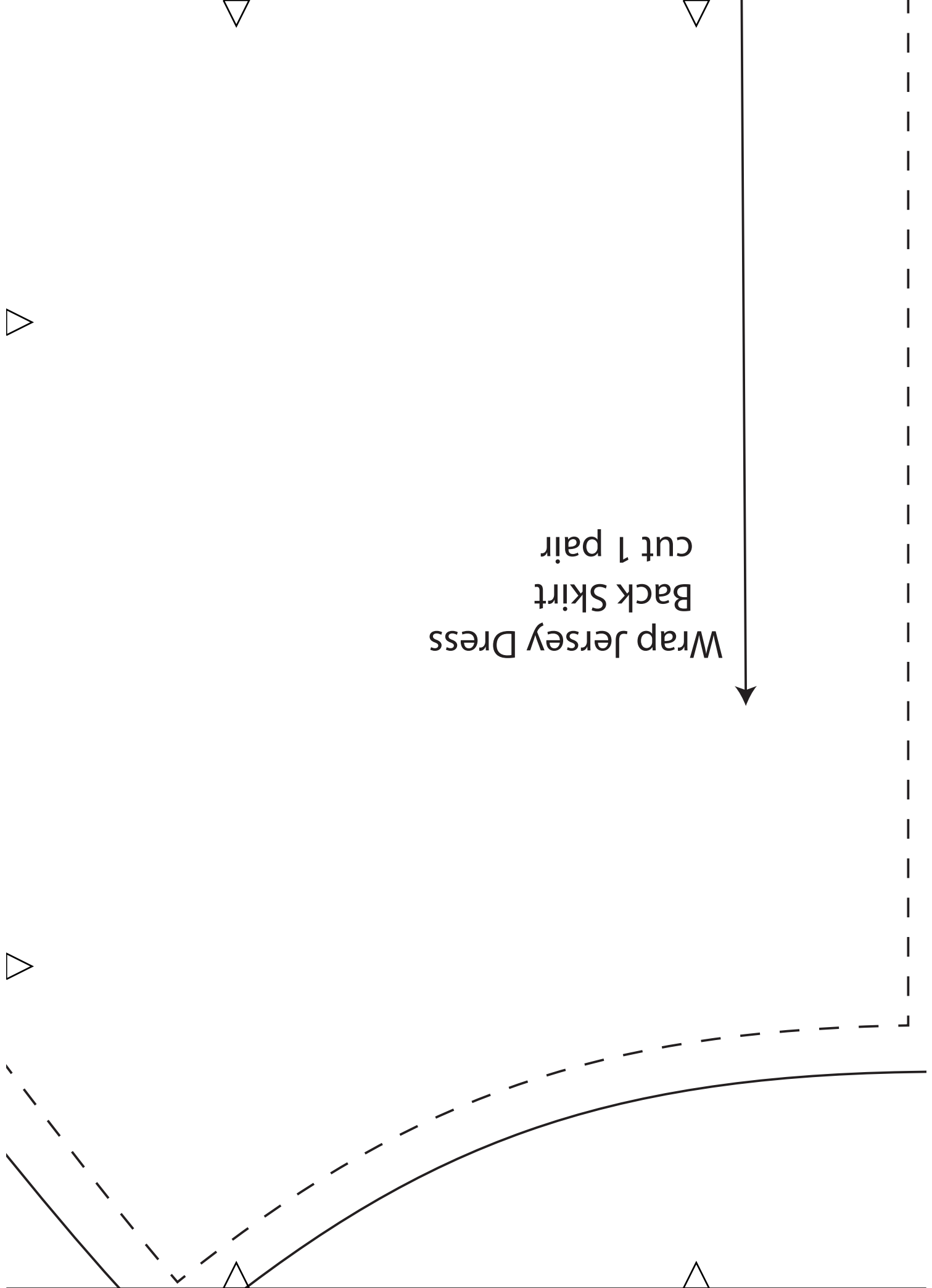


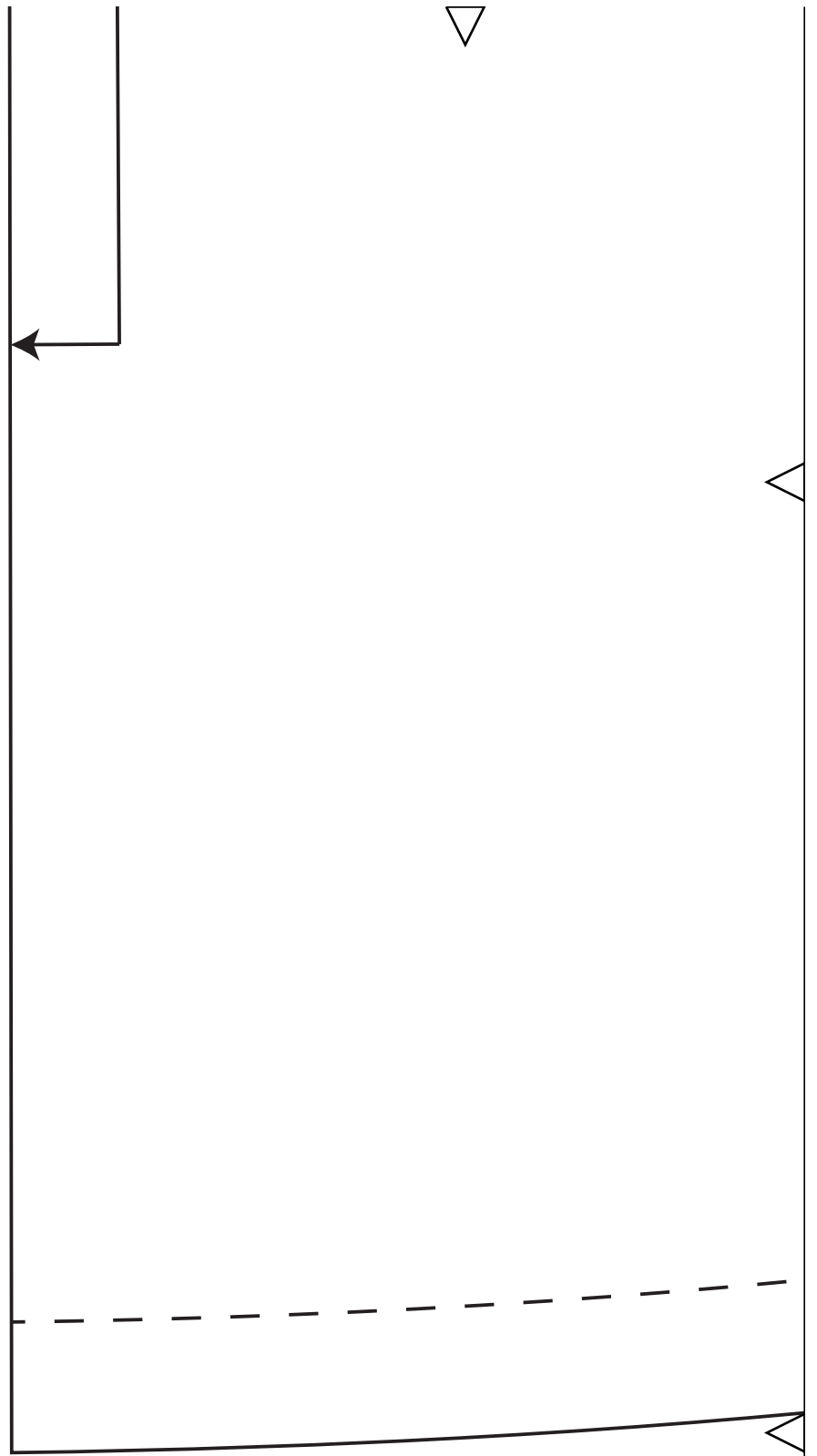
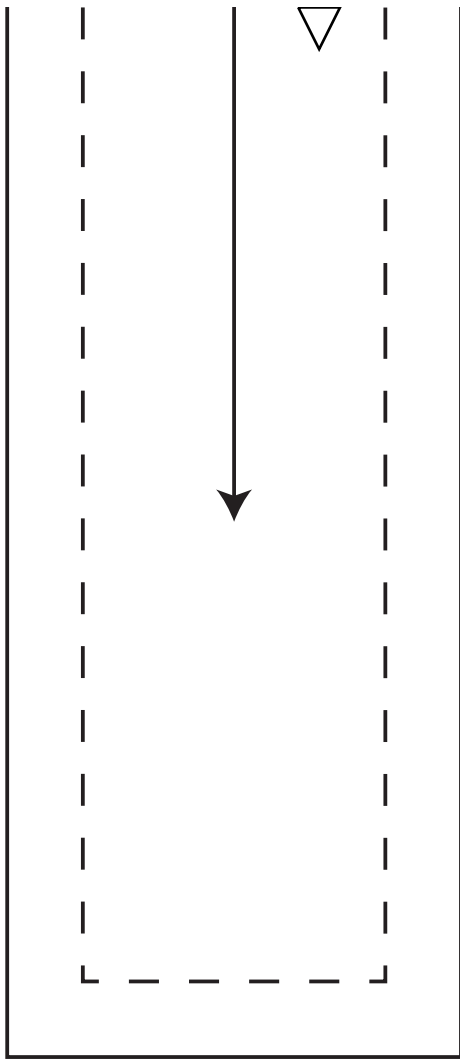


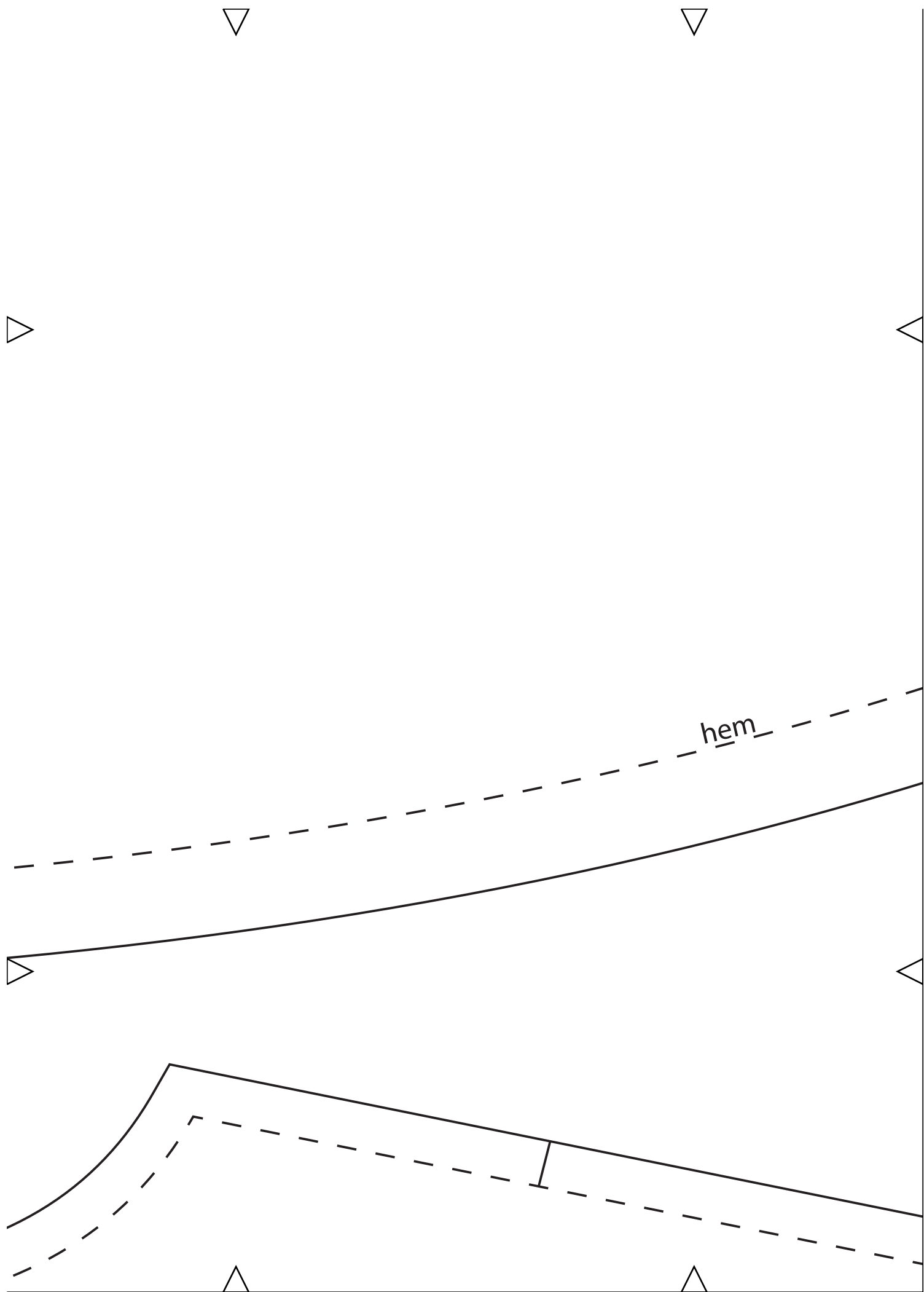


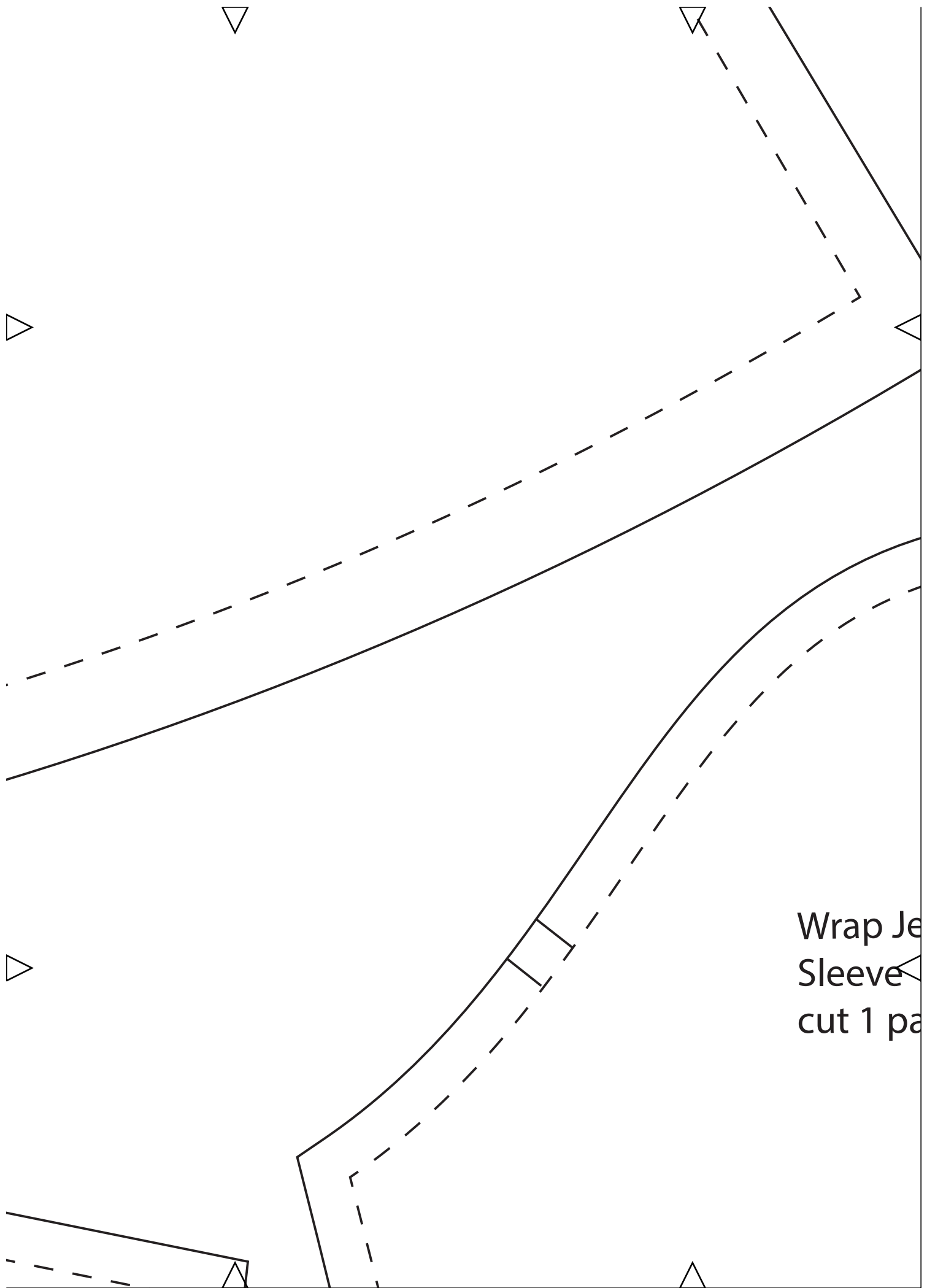


Wrap Jersey Dress  
Back Skirt  
cut 1 pair

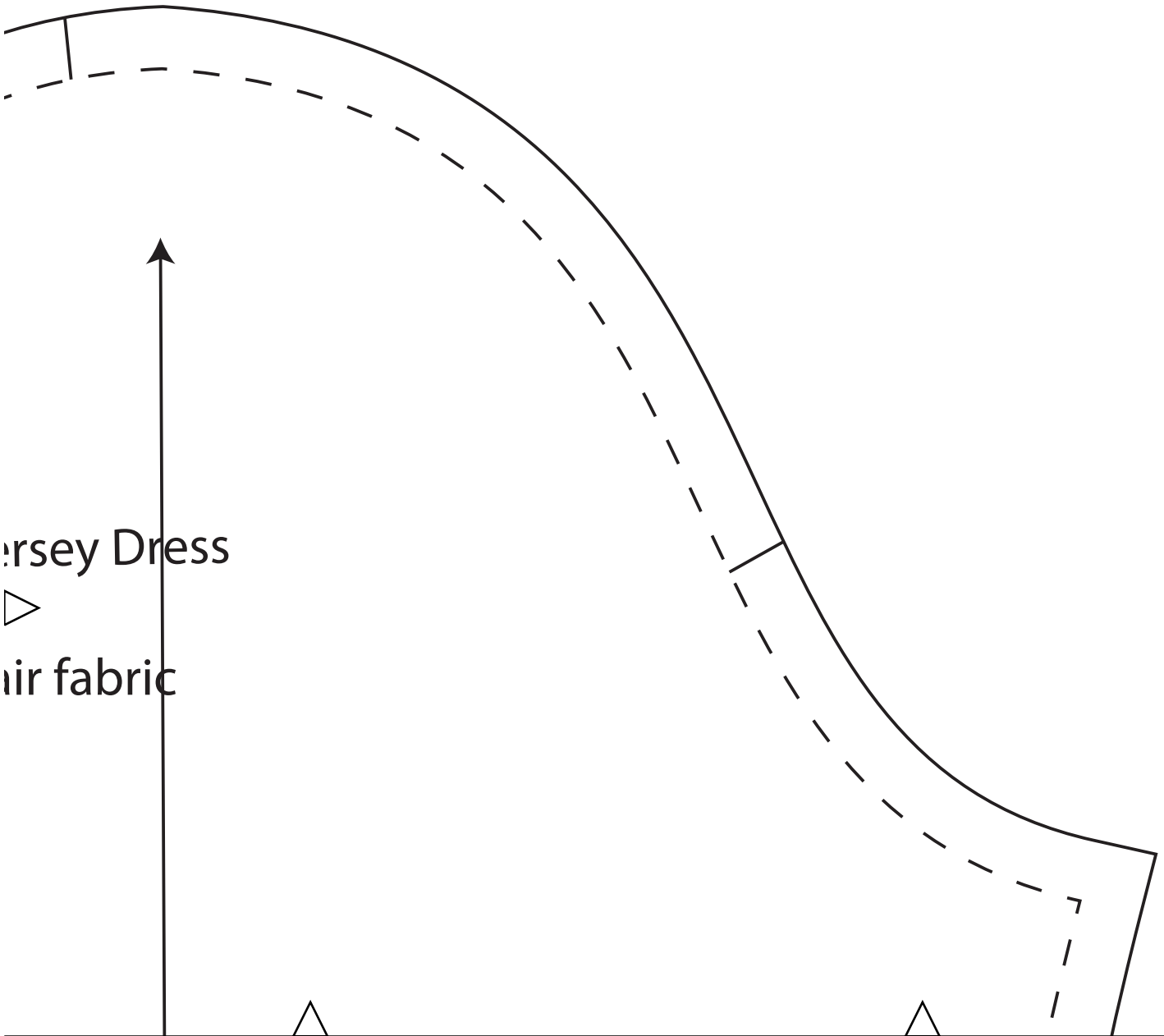








Wrap Je  
Sleeve  
cut 1 pa



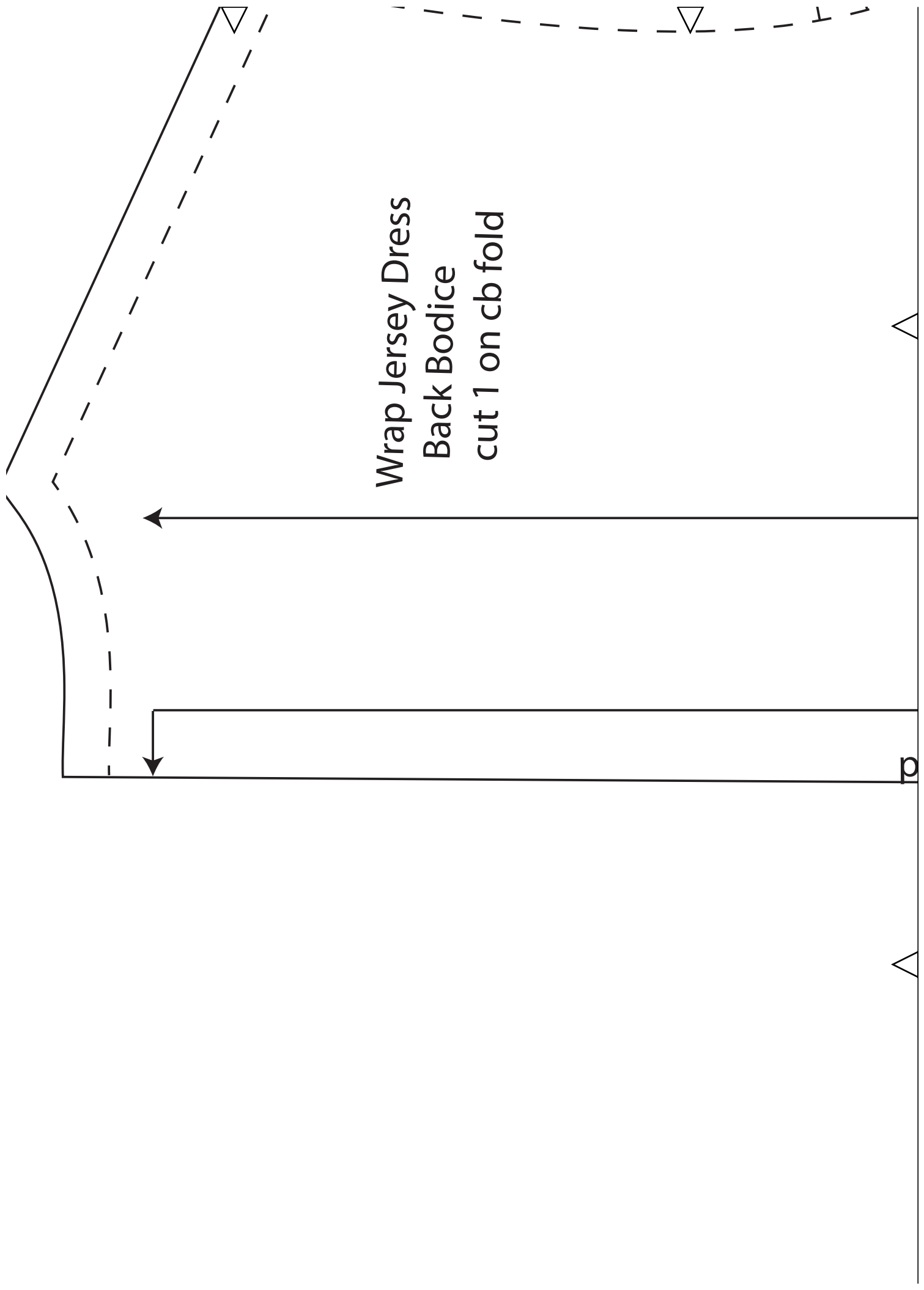
ersey Dress



ir fabric



Wrap Jersey Dress  
Back Bodice  
cut 1 on cb fold







lace on fold

