



SEW VERAVENUS

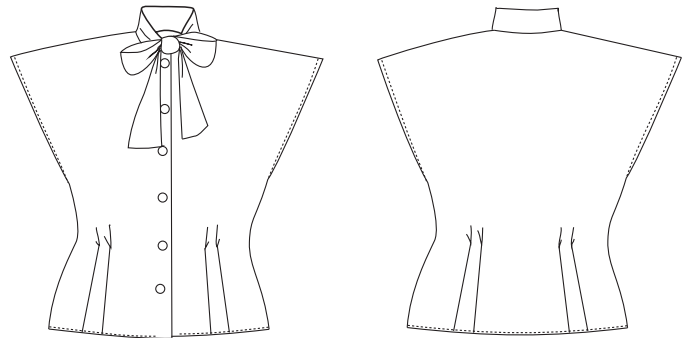
“A modern make on vintage style”
VeraVenus.com

PUSSYCAT BOW BLOUSE

Here is another little blouse pattern, same body shape as the Kimono/Magyar blouse with the keyhole cut-outs that I recently posted the pattern for but this one buttons down the front and has a bow tied neck. The pattern pdf includes the front and back blouse pattern, with all seam allowances included. NB: There are measurements to cut the bow tie but not an actual pattern.



I have also added extra optional tucks on the pattern to help you make the hips a neater fit if you wish to do that. The sewing instructions are on the next page in this pdf.

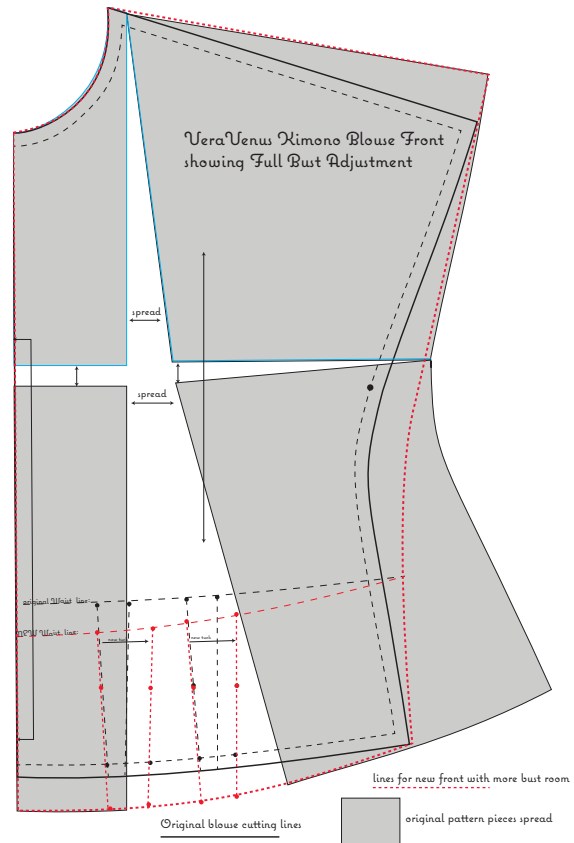


Below is a diagram of how you could go about doing a Full Bust Adjustment on this type of pattern that I drew in answer to a blog reader's question. Enjoy!

Fabric:
1.25 metres of 140cm width fabric

Body Measures:
bust: 91cms / 36"
waist: 76 cms / 30"
high hip: 94 cms / 37"
nape to waist: 40 cms / 15 3/4"

Pattern Measures:
bust: 106 cms / 41 1/2"
waist: 86 cms / 34"
hip: 101 cms / 39 3/4"
neck: 37 cms / 14 1/2"
centre back length to hem: 52 cms
blouse hem approx. 14 cms / 5 1/2"
below natural waist



Fabric amount needed:
1.55 metres of 140cm width fabric

Body Measurements:
bust: 91cm / 36"
waist: 76 cm / 30"
high hip: 84 cm / 33"
slope to waist: 40 cm / 16 1/2"

Pattern Measures:
bust: 102 cm / 40 1/2"
waist: 86 cm / 34" with extra tucks - 79cm / 31"
hip: 101 cm / 39 3/4" with extra tucks - 96cm / 37 3/4"
neck: 37 cm / 14 1/2"
centre back length to hem: 52 cm
blouse hem approx. 14 cm / 5 1/2"
below natural waist

16cm x 16cm (4" x 4")
print accuracy check square

optional CB tuck as needed for fit

centre back cut on fold

OPTIONAL CENTER BACK TUCK

FOR BUST/SHIRT:
(on straight or across grain)
cut fabric piece
15 centimetres (6") wide
by
140 centimetres (55") long
Join 2 lengths of 71cm/28" x 140cm/55"
with a centre back tuck seam.

tuck
optional 3rd tuck to make hips up

rolled hem

OPTIONAL CENTER BACK TUCK

centre front

waist

hem

PUSSYCAT BOW BLOUSE

A simple pussycat bow blouse to make in delicate fabric for spring and summer.

By Jeanne Spaziani

YOU WILL NEED

- Pattern template on page 89
- 1.25m of 140cm wide fabric (lightweight and soft is the key: cottons, rayons, synthetics or blends)
- 25cm of lightweight iron-on interfacing
- 6 small buttons
- General sewing equipment

1. Cut out the blouse body pieces using the pattern template on page 89. There isn't a pattern piece for the necktie but the measurements are given on the template page. Use the shaded section of the front pattern piece to cut out the two front interfacings and apply them to the wrong side of the front facings.

2. Sew all eight tucks from the hem up to their tops, backstitching securely at the tops.

3. Turn the edges of the front facings under 5mm and edge stitch to hold in place. With right sides together, bag out the top front edge and front hems where indicated on the pattern. Make a precise clip on the notch line at the edge of the top bagged out section to release the neckline seam allowance, which will make it easier to attach the tie in step 6. However don't clip the hem, as making the small double turned hem is easier if that seam allowance is left unclipped. Cut across the corner seam allowances diagonally to reduce bulk and turn the facings right sides out. Press the front fold lines in place.

4. French seam the front blouse shoulders to the back shoulders matching the shoulder notches. Press them and staystitch the neckline.

5. Fold the long necktie piece in half to find the centre back and mark with a pin. Look at the neck measurements written on the pattern and measure out those distances from either side of the centre back to find the shoulder points and the front. Mark these points with little clips into the fabric. Fold the tie in half, right sides together, and from the front clip on each side sew down to and across the ends to bag out the ties. Clip the corners diagonally, trim the seam allowances smaller if needed (smaller seam allowances look nicer if seen through sheer fabrics) and turn the tie ends right sides out.

6. Pin and stitch the right side of the blouse neck to a right side of the tie between the two front notches. Clip the curves. Press the allowance into the tie. Turn under and hand sew the inside tie seam allowance to the blouse neckline. Press the neckline and all the edges of the tie.

7. French seam the front and back side seams together from the hem up to the starred notches. Press.

8. The blouse is hemmed by making two 5mm turnings. Pressing the first turn in place before making the second is helpful. Hand or machine sew in place. The armholes are hemmed in the same way.

9. To finish mark and make the buttonholes on the right front and sew the buttons onto the left. Give your blouse a good press and you are done.

Tips

- 1.** Before hemming your blouse, try it on and adjust the fit over your hips by making the tucks deeper if needed. It generally looks better to divide the total reduction amount equally between all the tucks rather than just taking in a bigger amount through a couple.
- 2.** French seaming seemed the best option for the delicate cotton/silk fabric I made my sample in but you could do open seams or overlocked seams depending on your own sewing preferences and fabric.

RESOURCES

Sprigs (Coral and Blue) cotton/silk voile:
www.tilthesungoesdown.com

Fabric amount needed:

1.25 metres of 140cm width fabric

Body Measurements:

bust: 91cm / 36"

waist: 76 cms / 30"

high hip: 94 cms / 37"

nape to waist: 40 cms / 15 3/4"

Pattern Measures:

bust: 106 cms / 41 1/2"

waist: 86 cms / 34" with extra tucks - 79cm / 30"

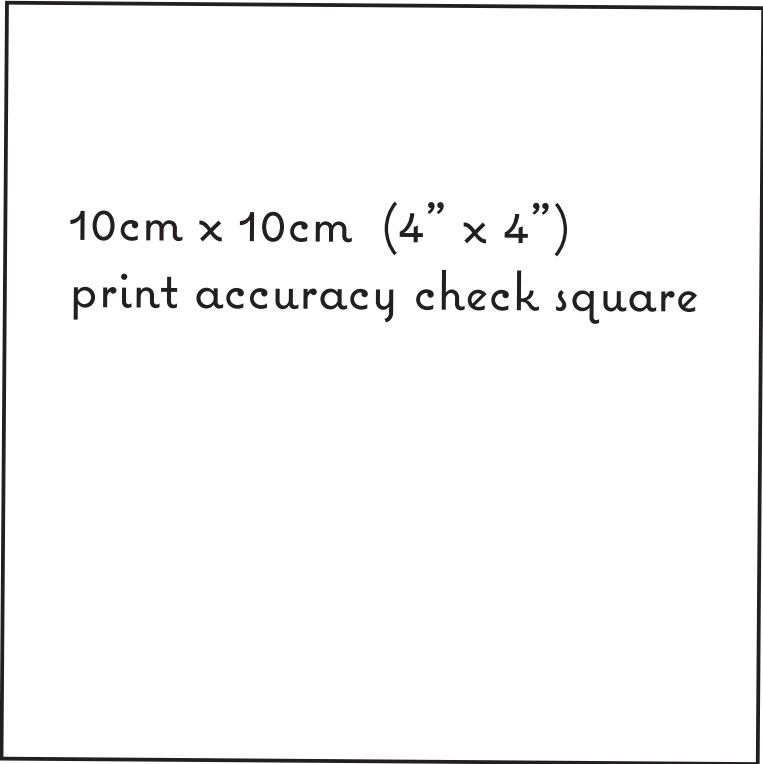
hip: 101 cms / 39 3/4" with extra tucks-96cm/ 37 3/4"

neck: 37 cms / 14 1/2"

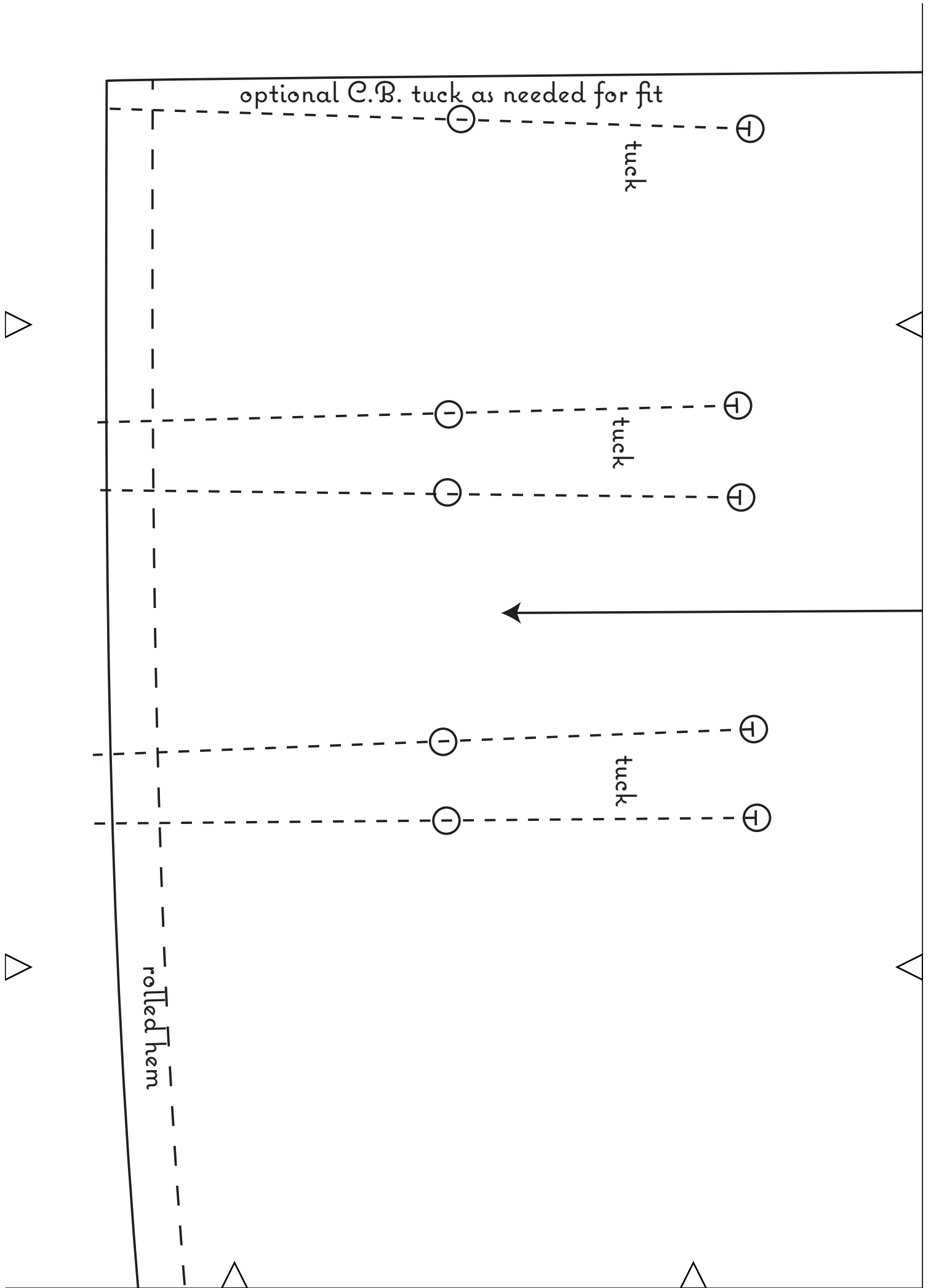
centre back length to hem: 52 cms

blouse hem approx. 14 cms / 5 1/2"

below natural waist

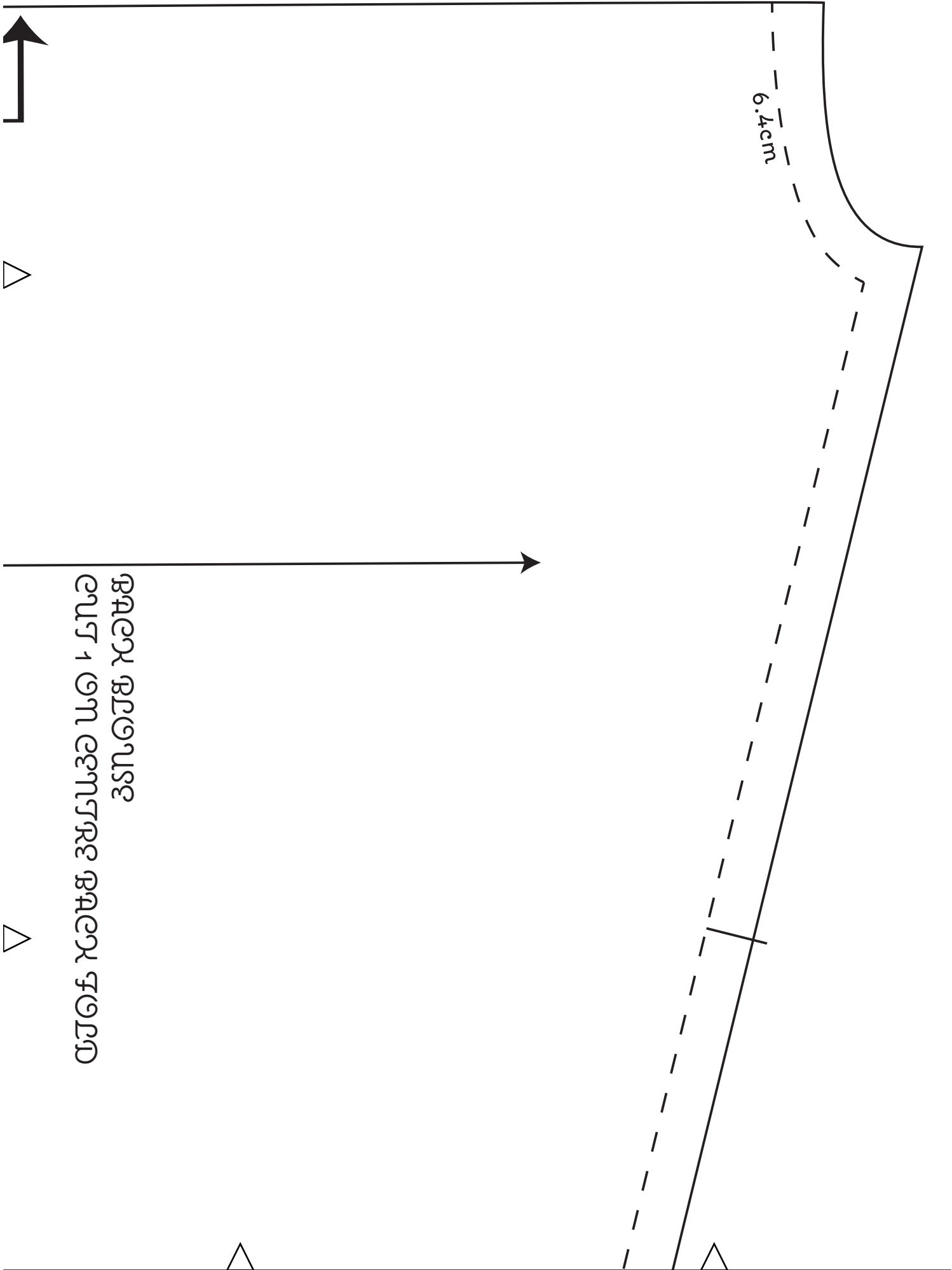


10cm x 10cm (4" x 4")
print accuracy check square



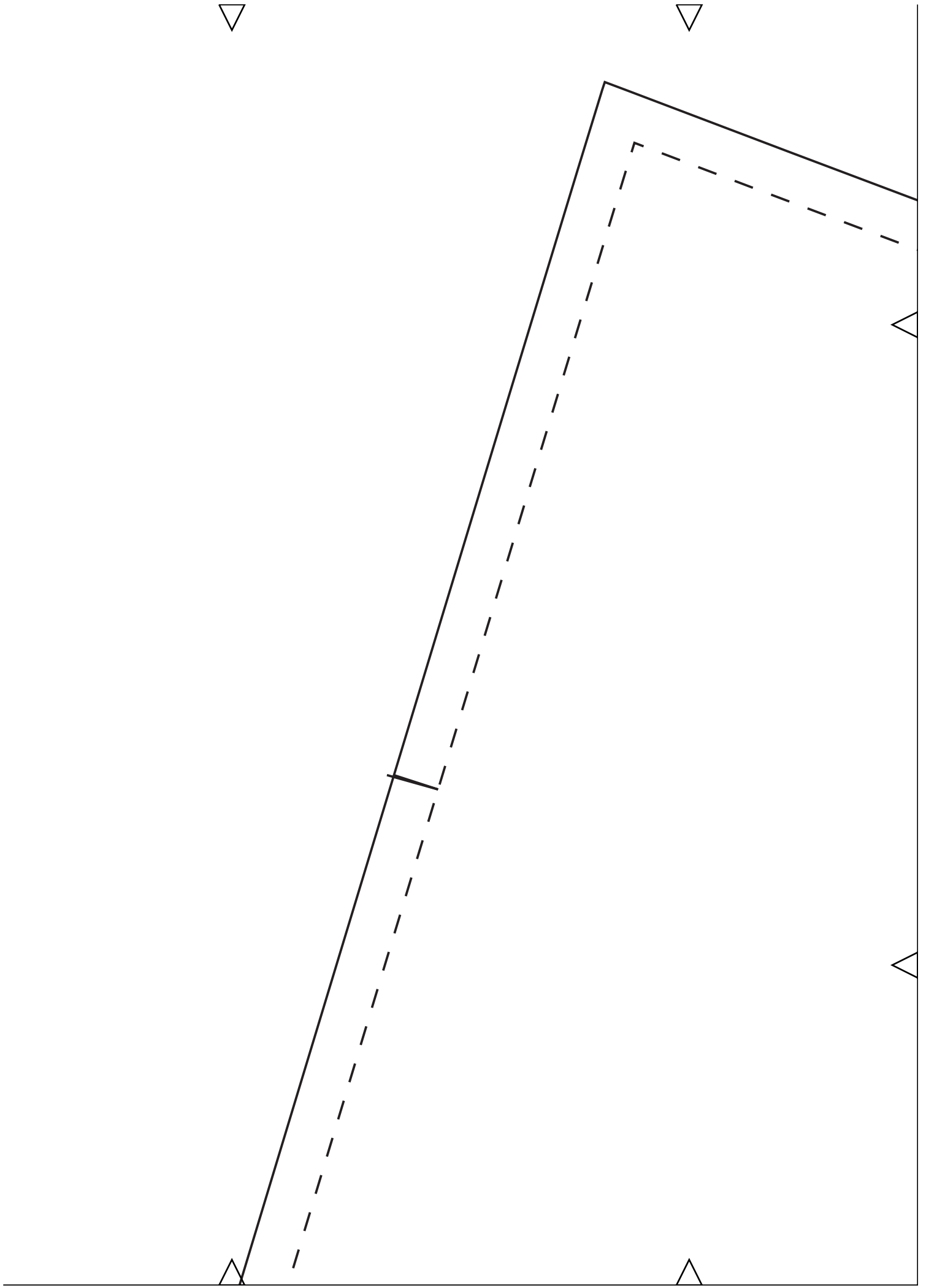
centre back cut on fold



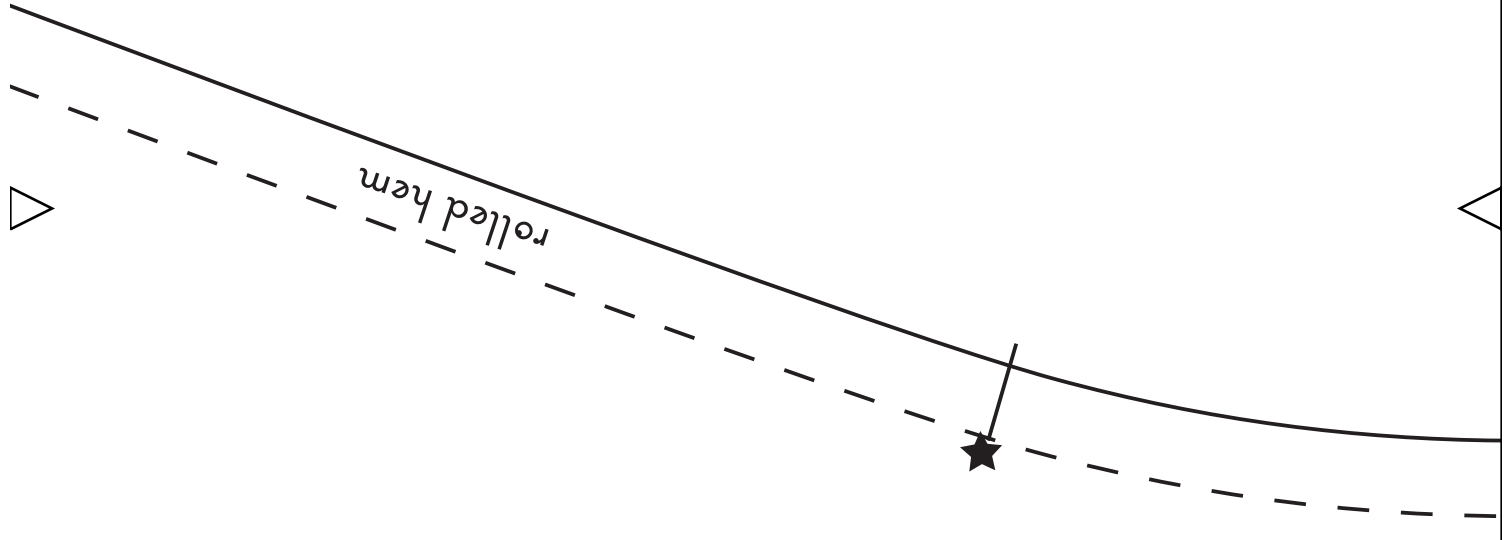


6.4cm

ക്വലറു കല്ലറു
 ഡ്രഗ് 1 നെ ഡ്രഗ്നറു ക്വലറു ട്രാലറു



၅၈၄ ဝတ်စား
အိတ်



အိတ် အိတ်:

(on straight or across grain)

cut fabric piece

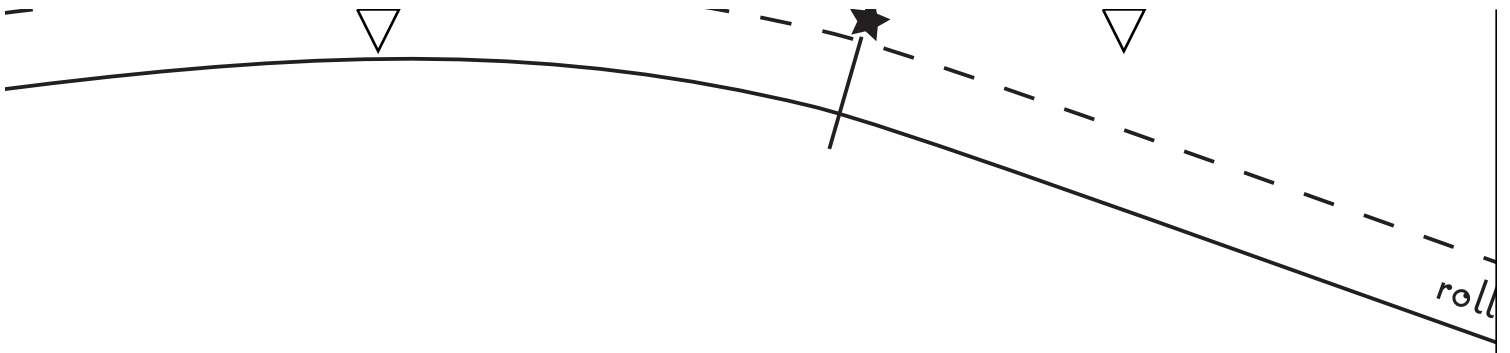
12 centimetres (5") wide

by

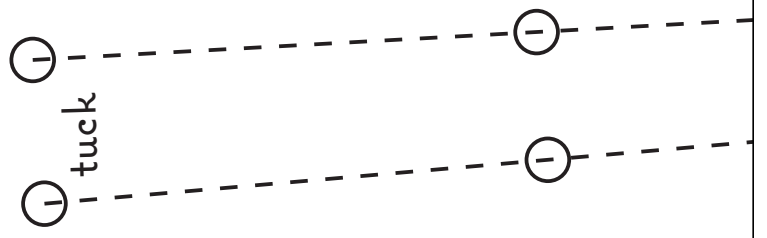
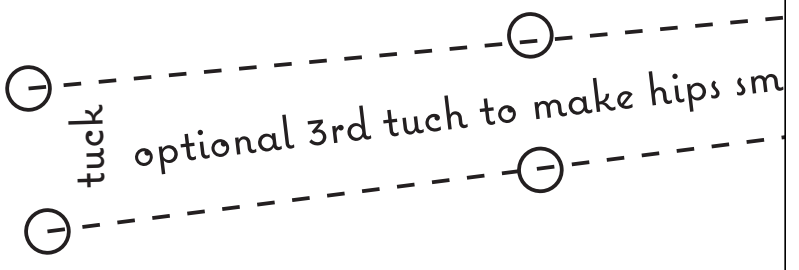
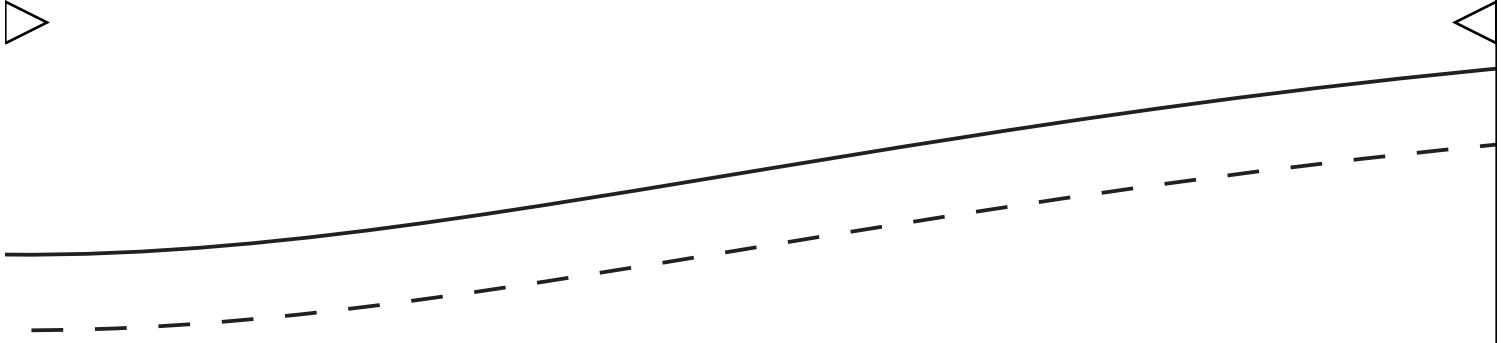
140 centimetres (55") long

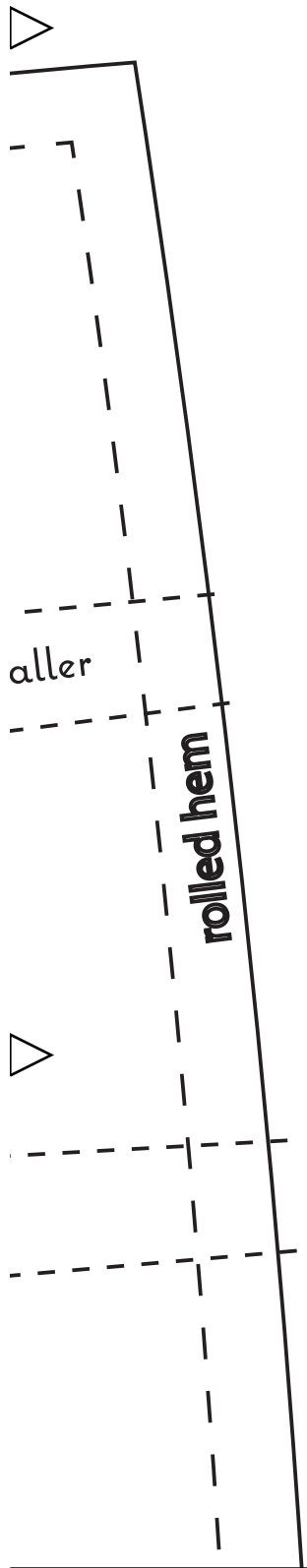
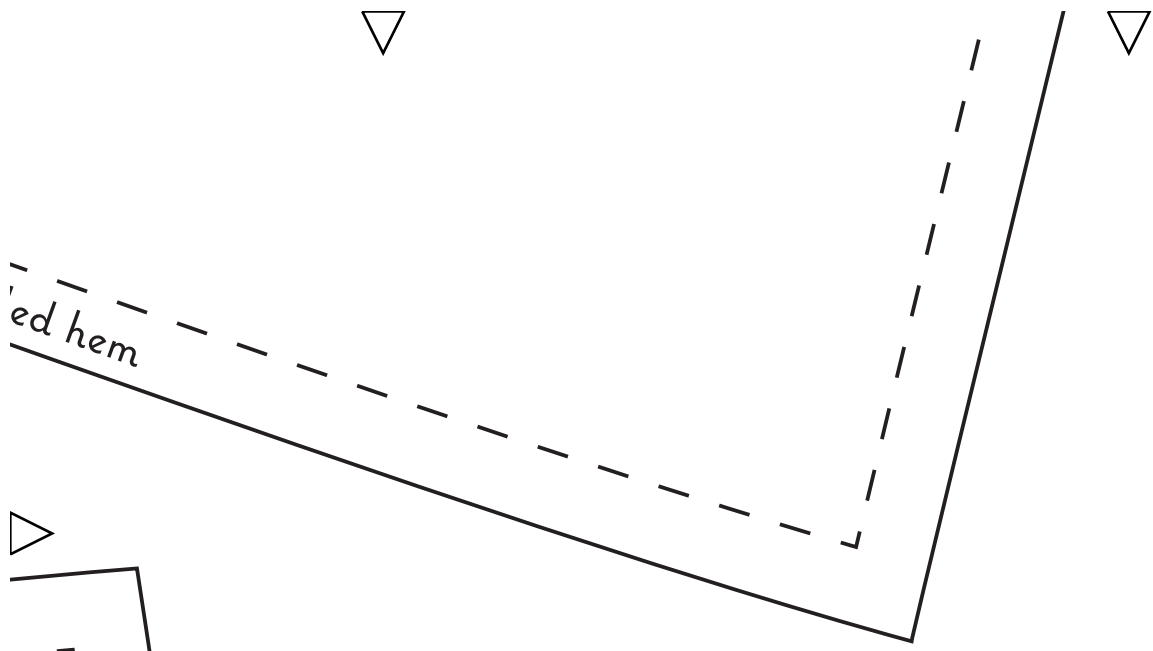
Or join 2 lengths of 71cm / 28" x 12cm / 5"

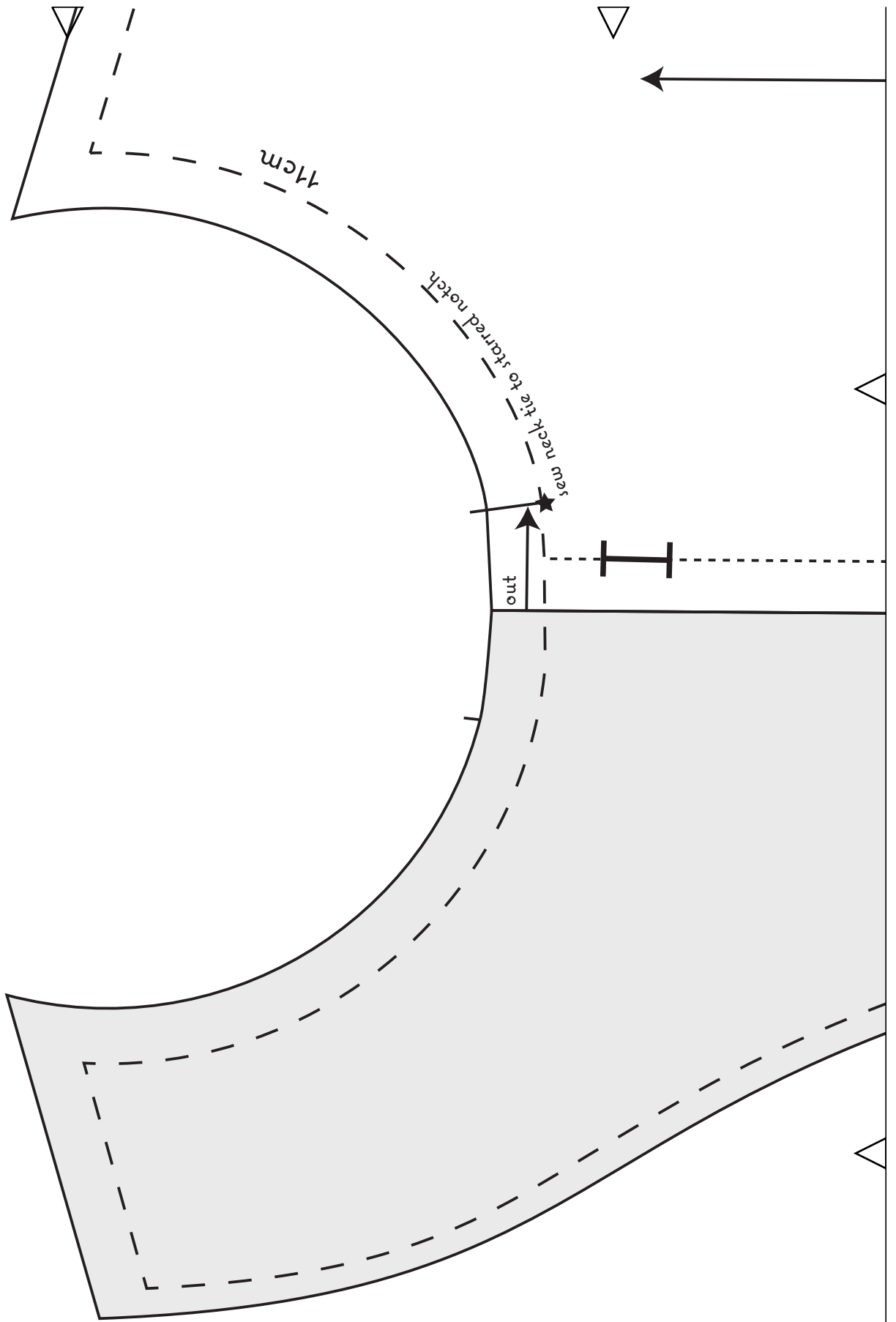
with a centre back neck seam



roll







FR
en



centre front



turn under 1/2 centimetre edge



