

# Two Piece Wrap Dress



Size 6

© Tricia Jones **For Personal-Non Commercial Use Only**  
<http://leafytreetopspot.blogspot.com>

## Materials:

2 1/2- 3 yards of knit fabric (I only used about 2 1/2 yds, but had extra wide fabric).

Coordinating thread

Sewing machine and basic

After printing off dress pattern pieces, check 1 inch test square to ensure proper scaling.

Cut each of the ten pattern piece pages around the rectangular border. You will align them in two rows, five pages across.

1 2 3 4 5

6 7 8 9 10

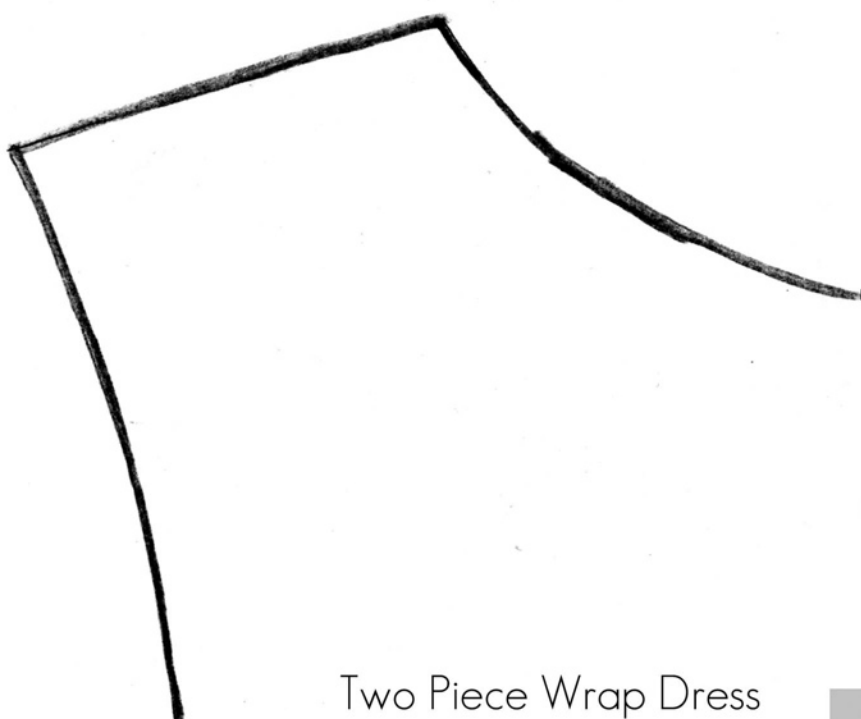
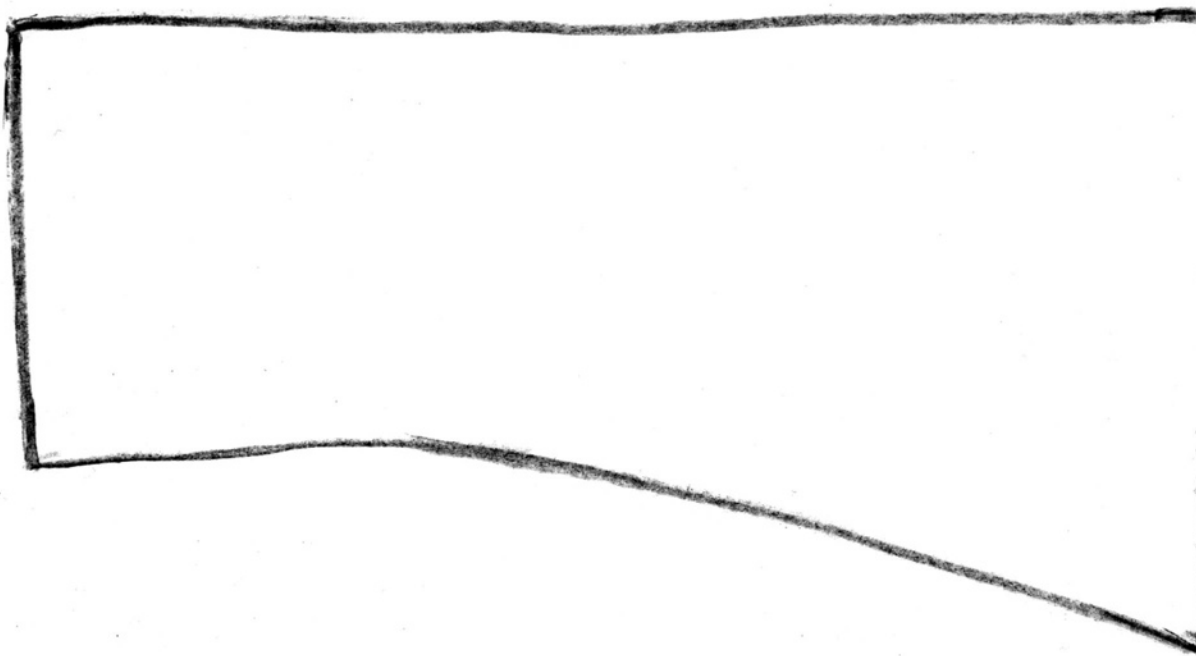
Tape pages together. Cut out individual pattern pieces. You should have a front bodice, back bodice, sleeve, and facing pattern piece. Cut out pattern pieces according to notes on pattern. In addition to the pattern pieces you will need to cut four rectangles of fabric for the skirt, as reference below.

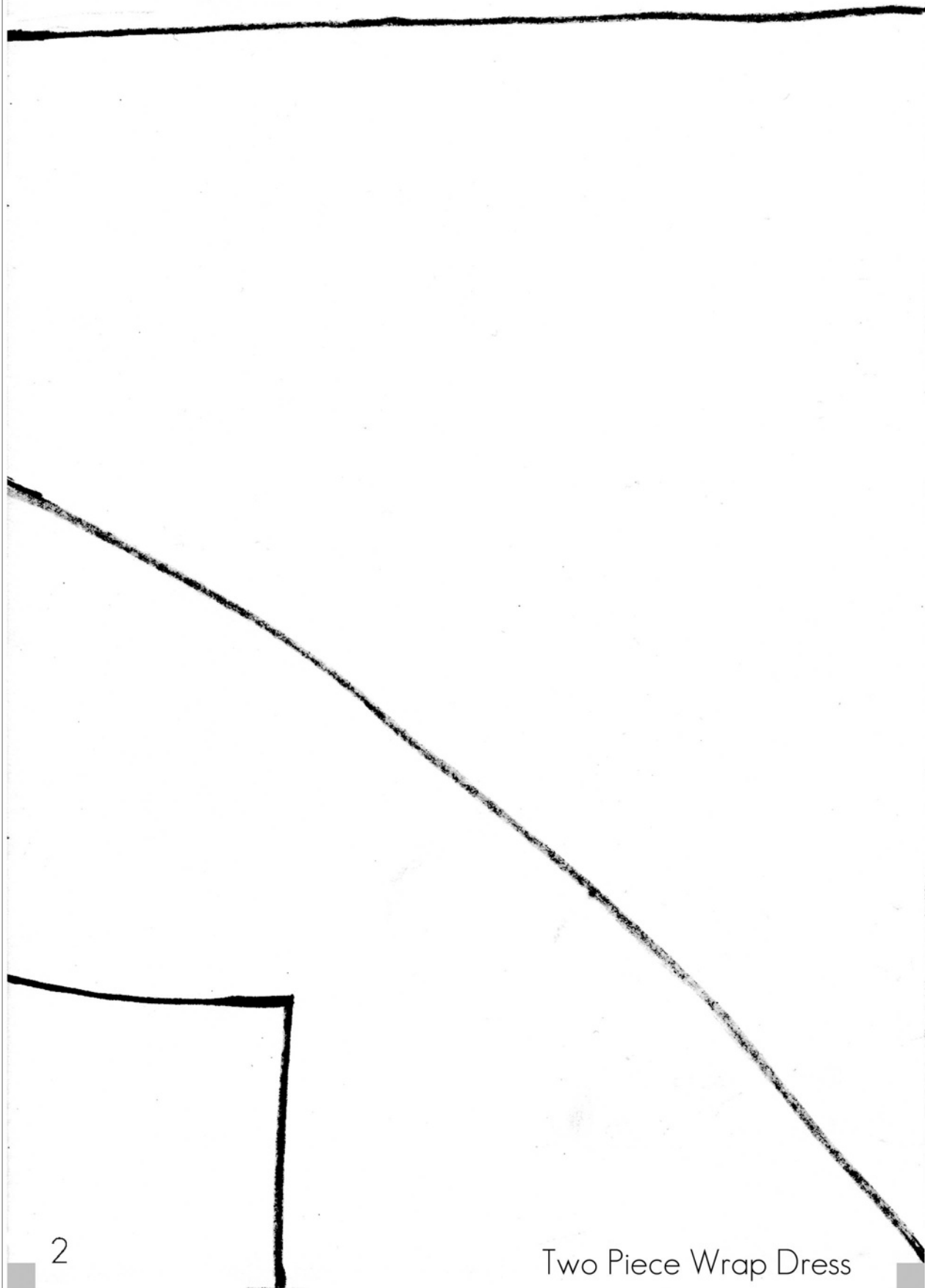
If you need to enlarge the pattern, you may consider adding width to the back bodice piece at the fold, and to the front bodice piece by extending the narrow end. Sleeves are rather narrow, and you may want to add width at the fold as well.

## For Dress:

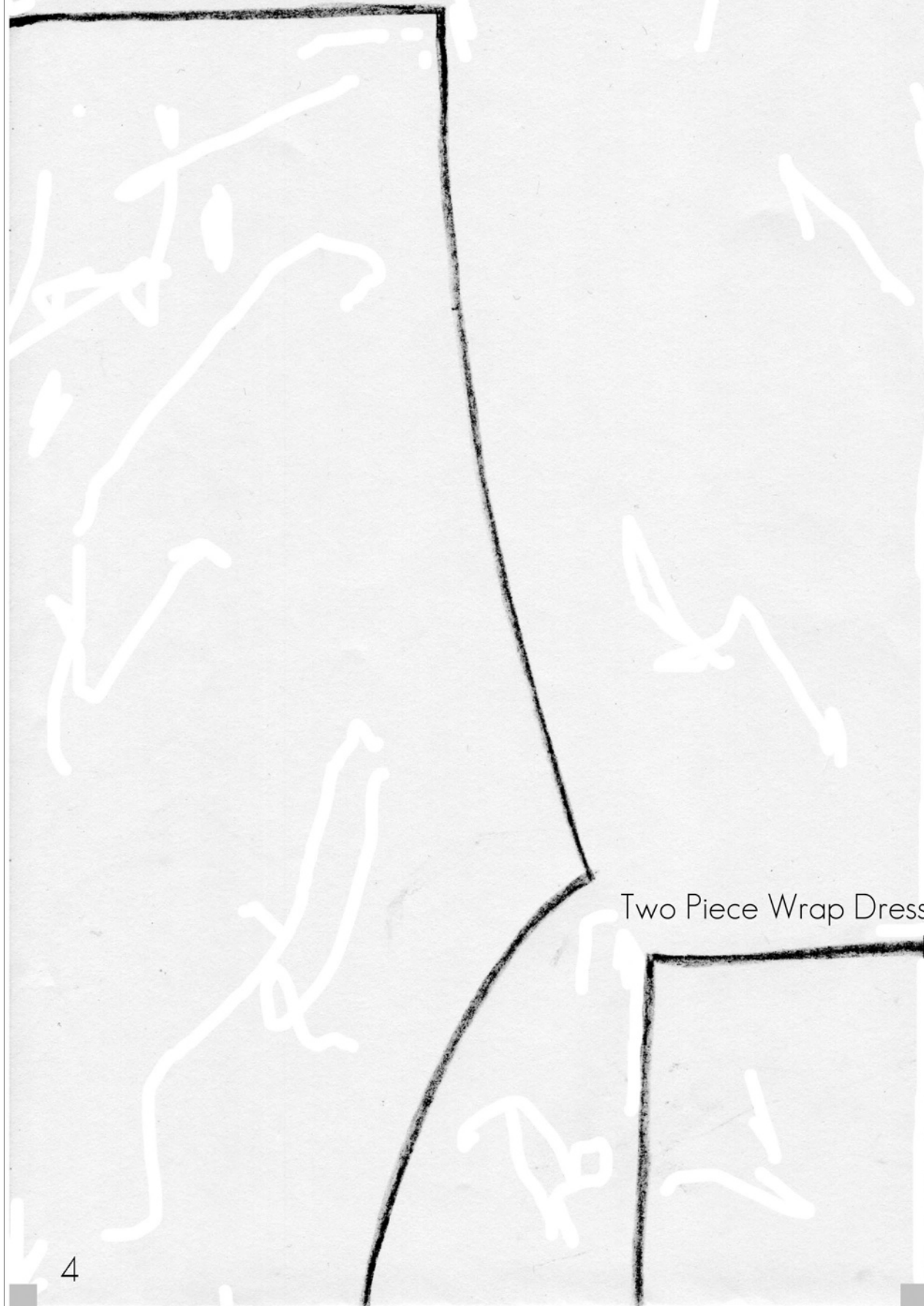
Cut two 22" x 15" rectangles

Cut two 27 1/2" x 33" rectangles for skirt

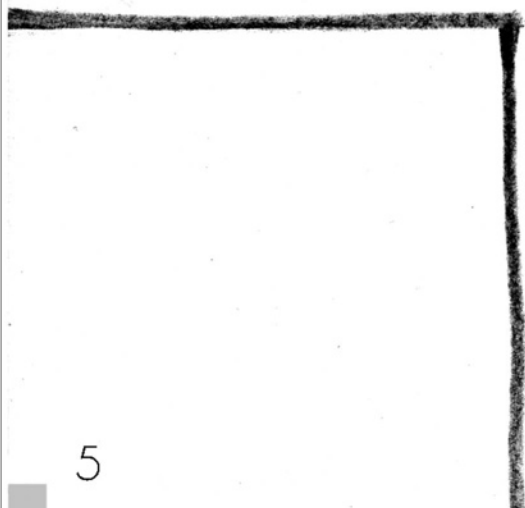




Front Bodice Piece  
Cut 2 Right Facing  
Cut 2 Left Facing  
3/8" Seam Allowance

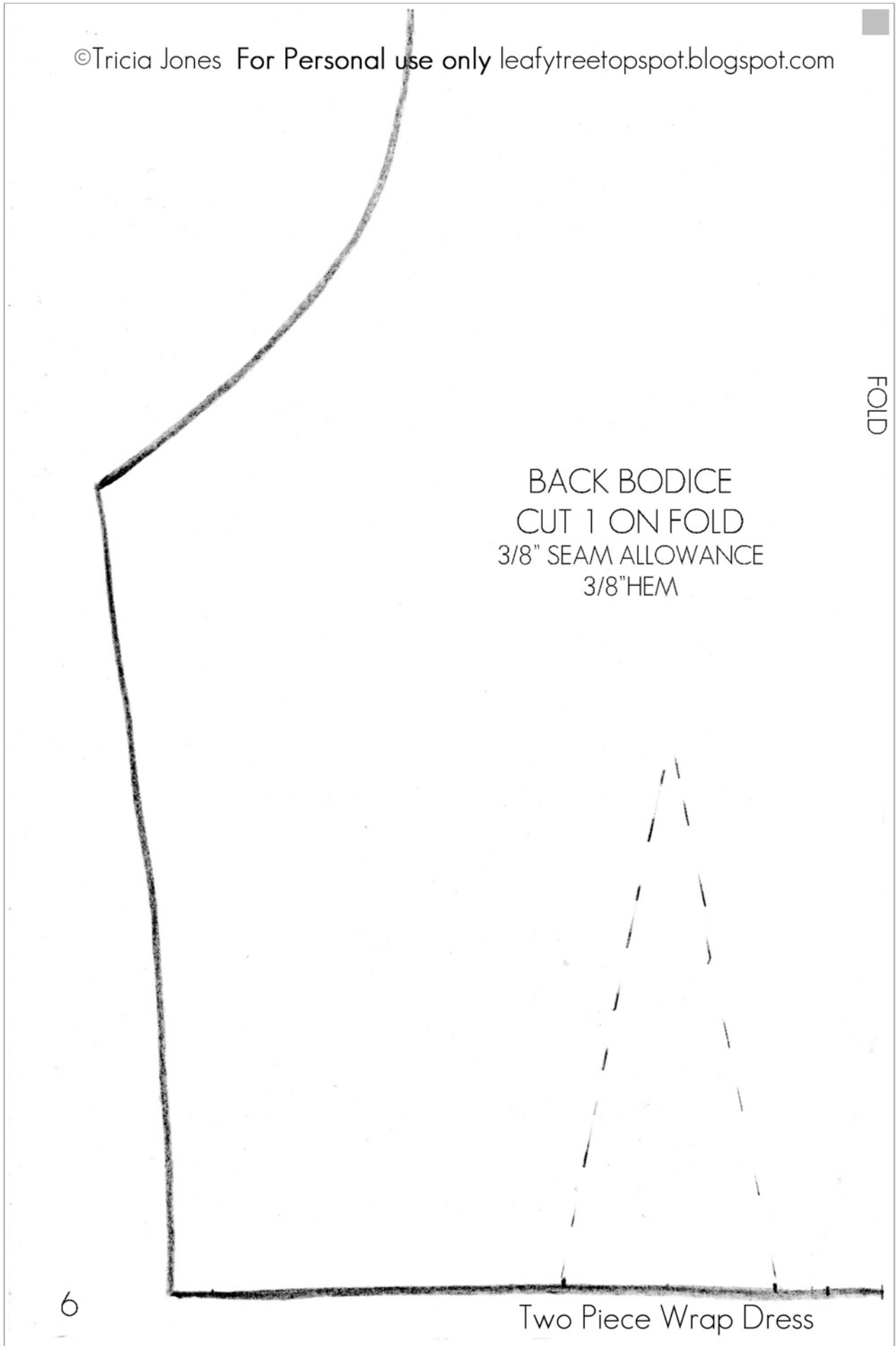


Two Piece Wrap Dress

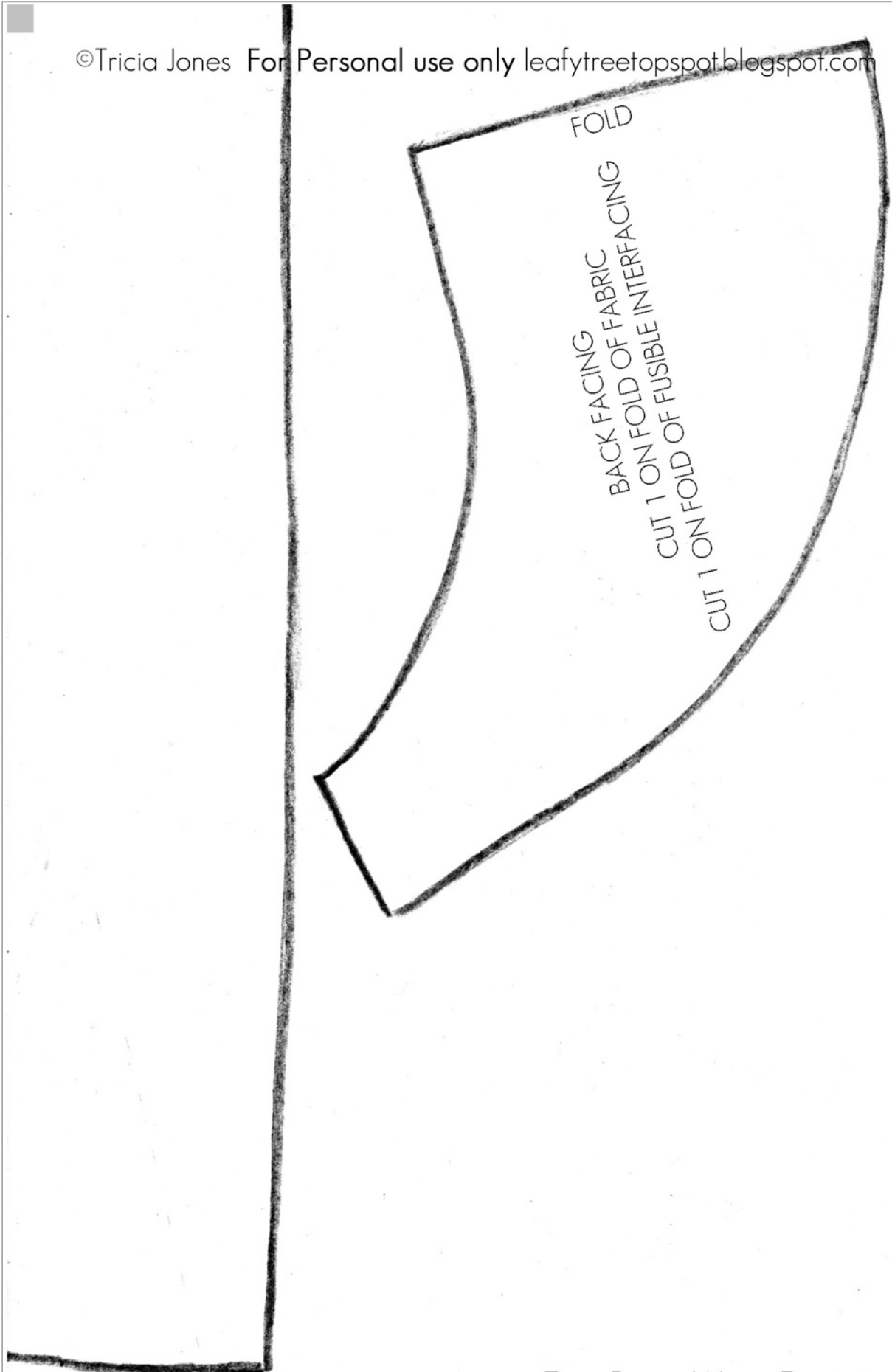


FOLD

BACK BODICE  
CUT 1 ON FOLD  
3/8" SEAM ALLOWANCE  
3/8"HEM







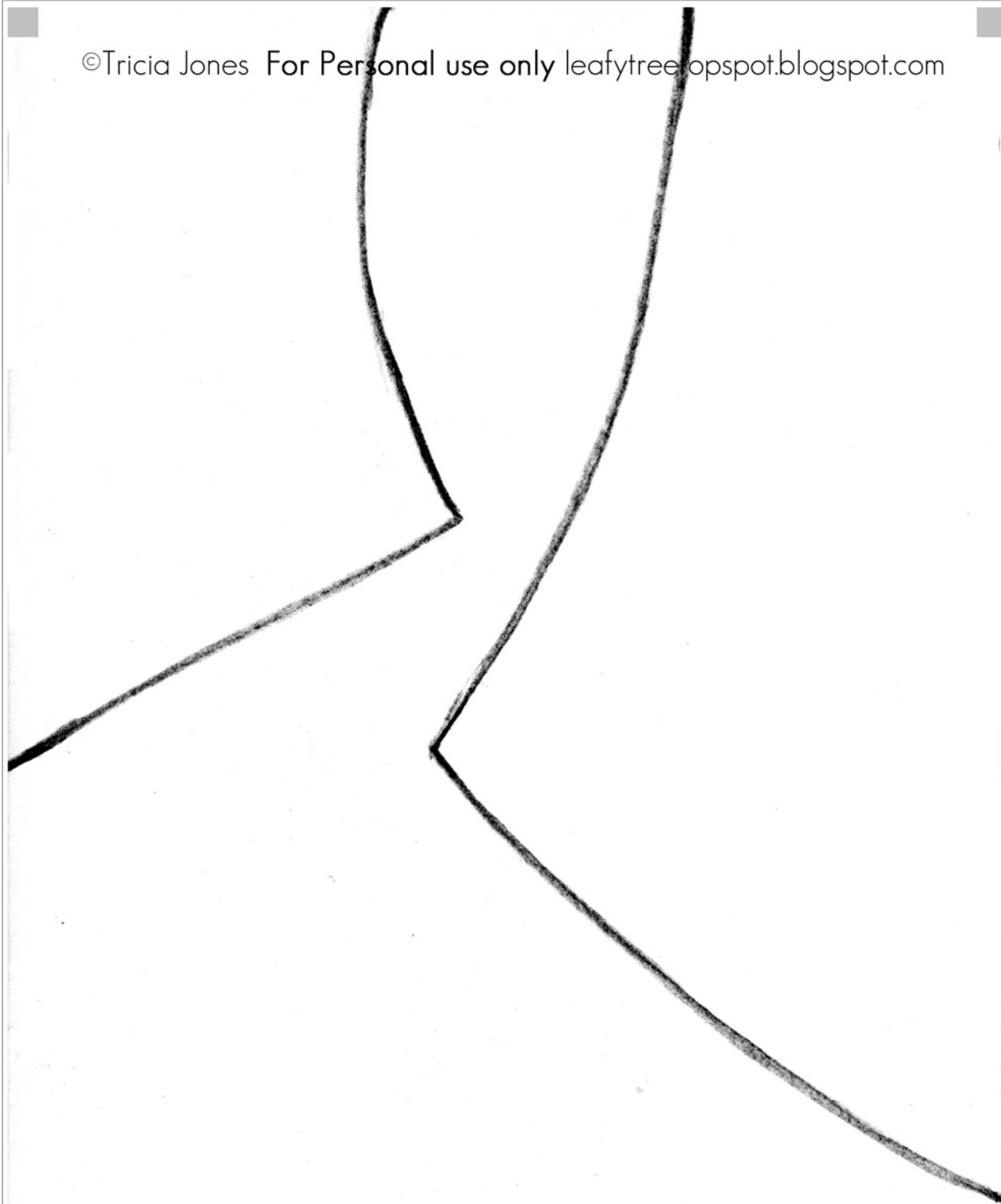
FOLD

BACK FACING  
BACK FOLD OF FABRIC

CUT 1 ON FOLD OF FUSIBLE INTERFACING  
CUT 1 ON FOLD OF FUSIBLE INTERFACING



©Tricia Jones For Personal use only leafytreeopspot.blogspot.com



SLEEVE  
CUT 2 ON FOLD  
1 INCH HEW

FOLD

