

1 Inch

4T
3T
2T
12M

Summer Picnic Dress
Size 12M - 4 Years
by The Cottage Mama
www.thecottagemama.com

Main Dress
Piece 1
(Connect with Pieces 2, 3, 4)

Cut 2 on Fold

↑
Grainline



1 Inch

Summer Picnic Dress

Size 12M - 4 Years

by The Cottage Mama

www.thecottagemama.com

Front & Back Facing
Cut 2 on Fold

Piece 5



← Grainline

FOLD

12M 2T 3T 4T

Summer Picnic Dress
 Size 12M - 4 Years
 by The Cottage Mama
www.thecottagemama.com

Front & Back Yoke
 Cut 2 on Fold

Piece 6

FOLD

← Grainline

12M 2T 3T 4T

1 Inch

4T 3T 2T 12M

Summer Picnic Dress

Size 12M - 4 Years

by The Cottage Mama

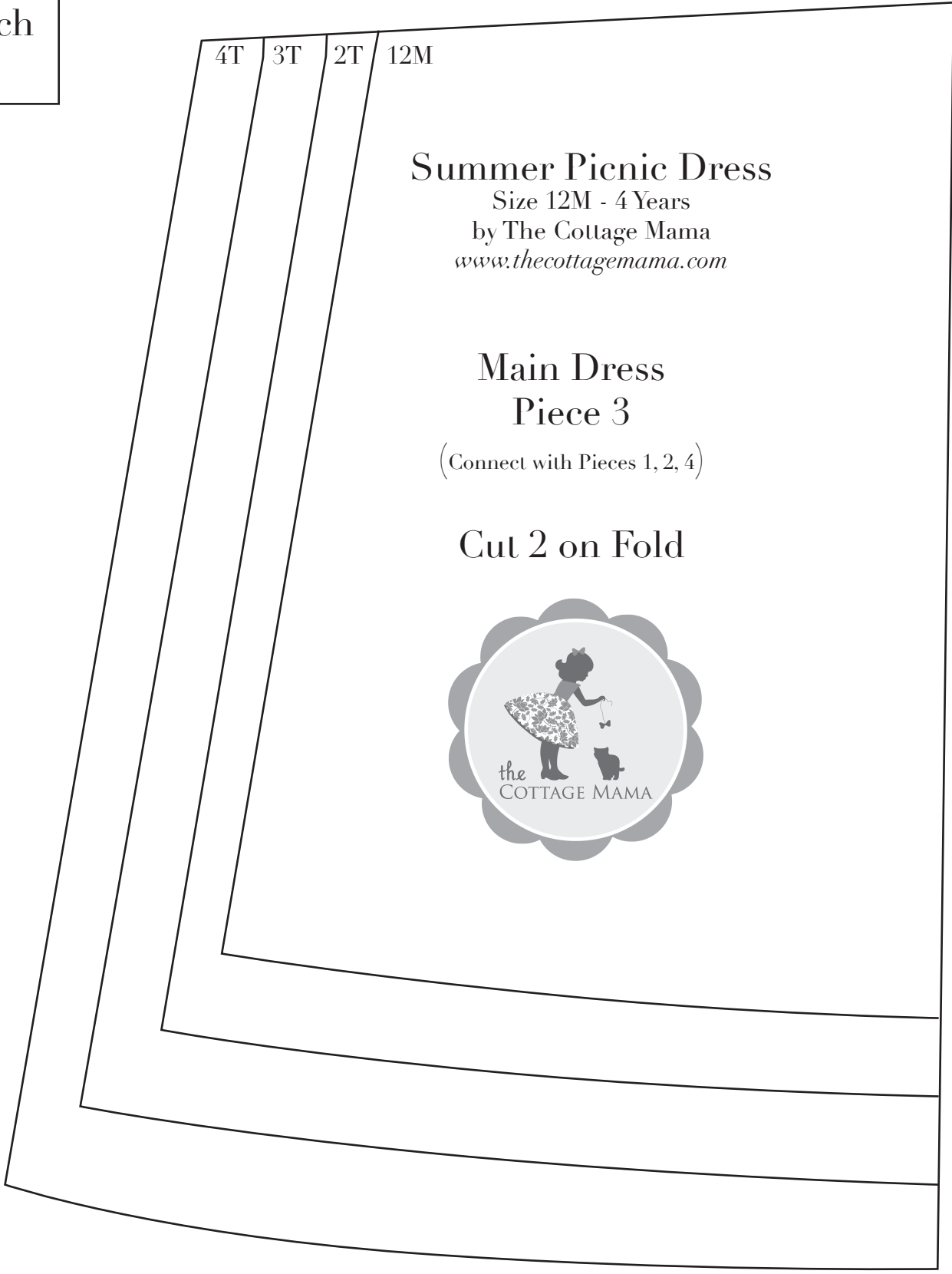
www.thecottagemama.com

Main Dress

Piece 3

(Connect with Pieces 1, 2, 4)

Cut 2 on Fold



1 Inch

Fold

Summer Picnic Dress

Size 12M - 4 Years

by The Cottage Mama

www.thecottagemama.com

Main Dress

Piece 4

(Connect with Pieces 1, 2, 3)

Cut 2 on Fold



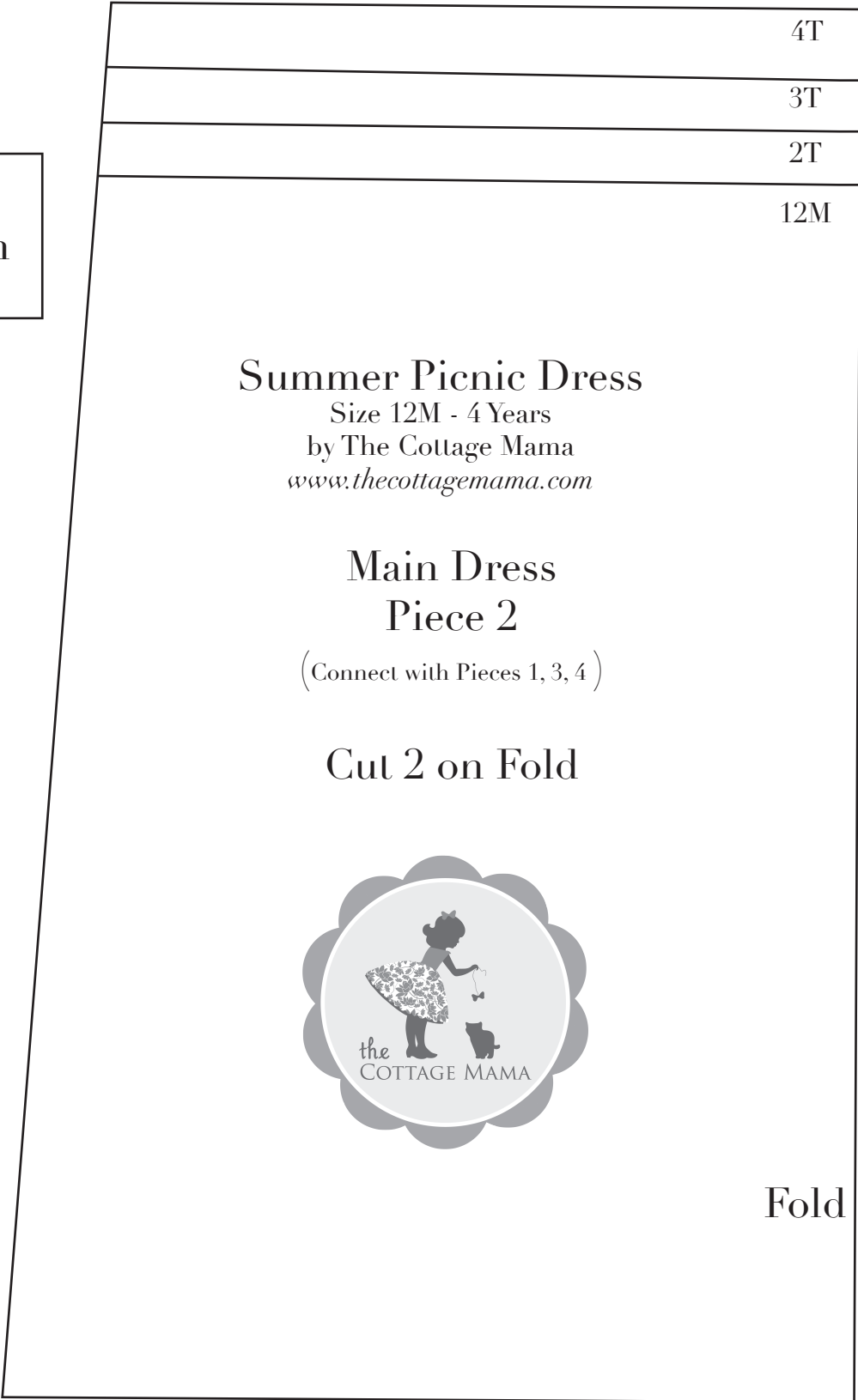
12M

2T

3T

4T

1 Inch



4T

3T

2T

12M

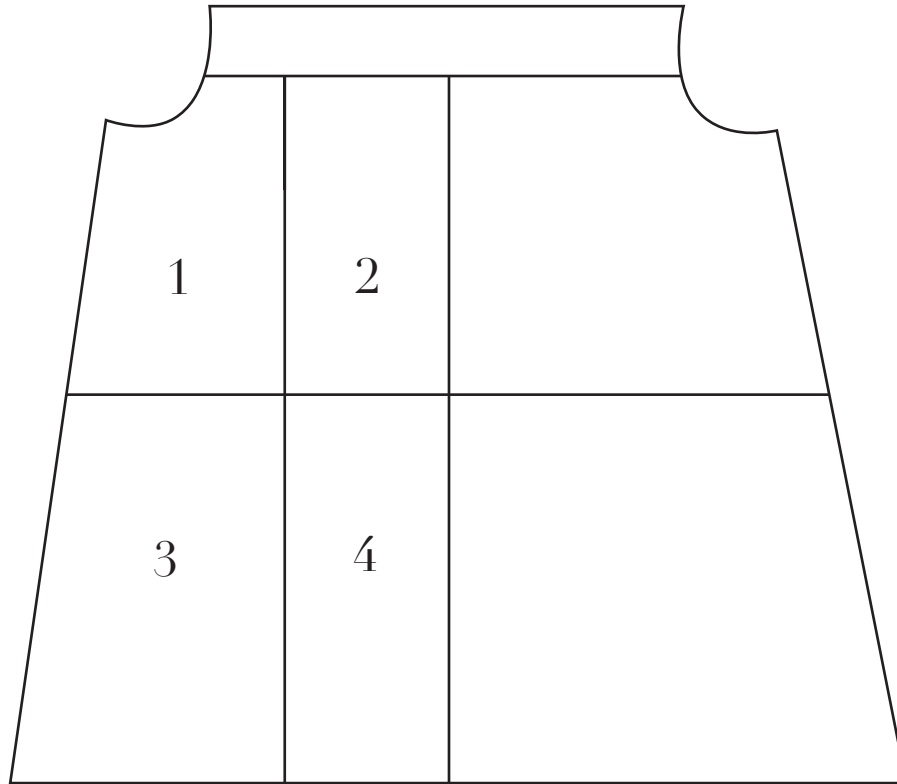
Summer Picnic Dress
Size 12M - 4 Years
by The Cottage Mama
www.thecottagemama.com

Main Dress
Piece 2
(Connect with Pieces 1, 3, 4)

Cut 2 on Fold



Fold



This is how the main dress pieces should be taped together.
Cut out each piece.

The lines should overlap to form the main dress piece.