

2" X 2"  
Test Square

CUT ON FOLD

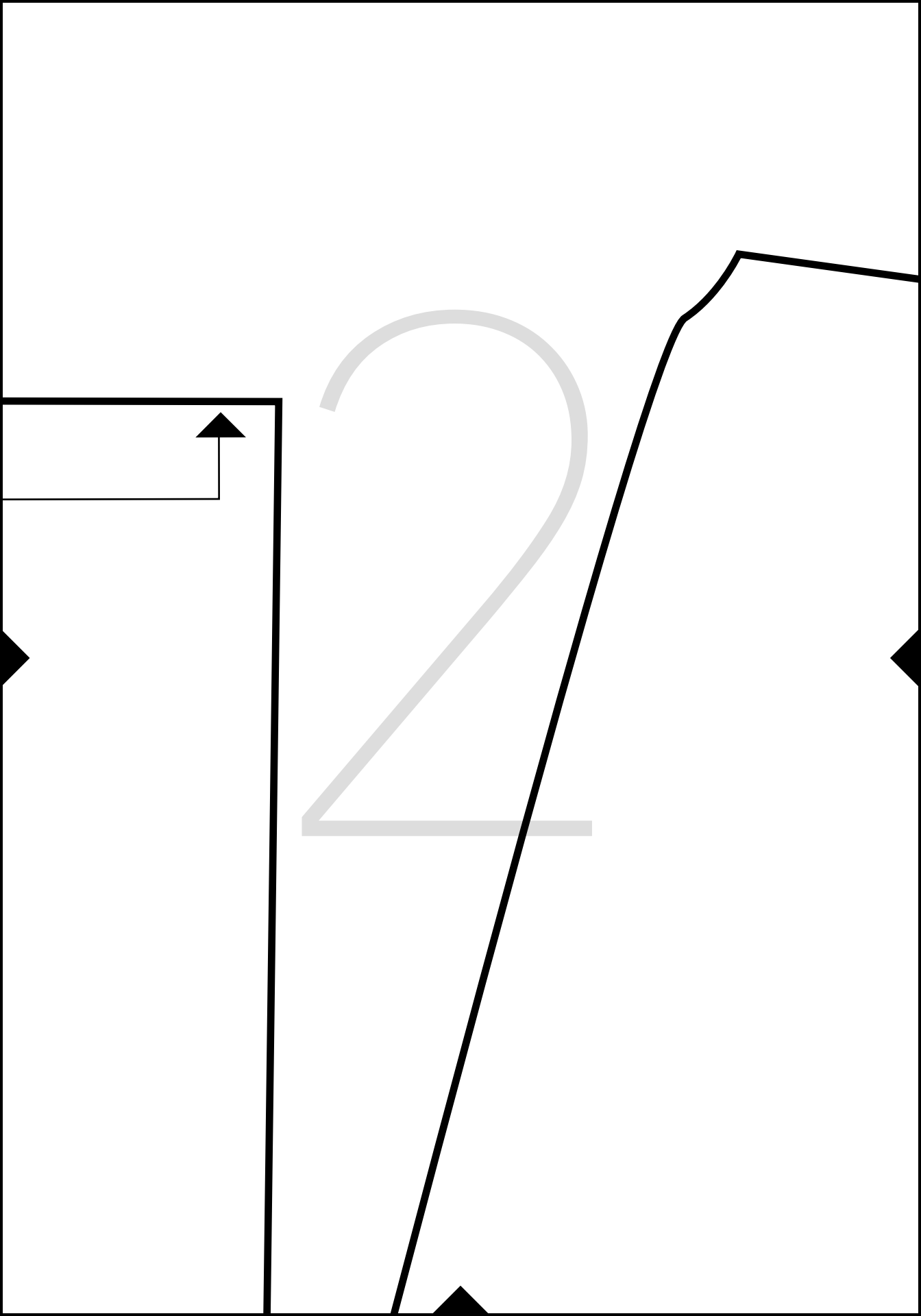


**SEWBON**

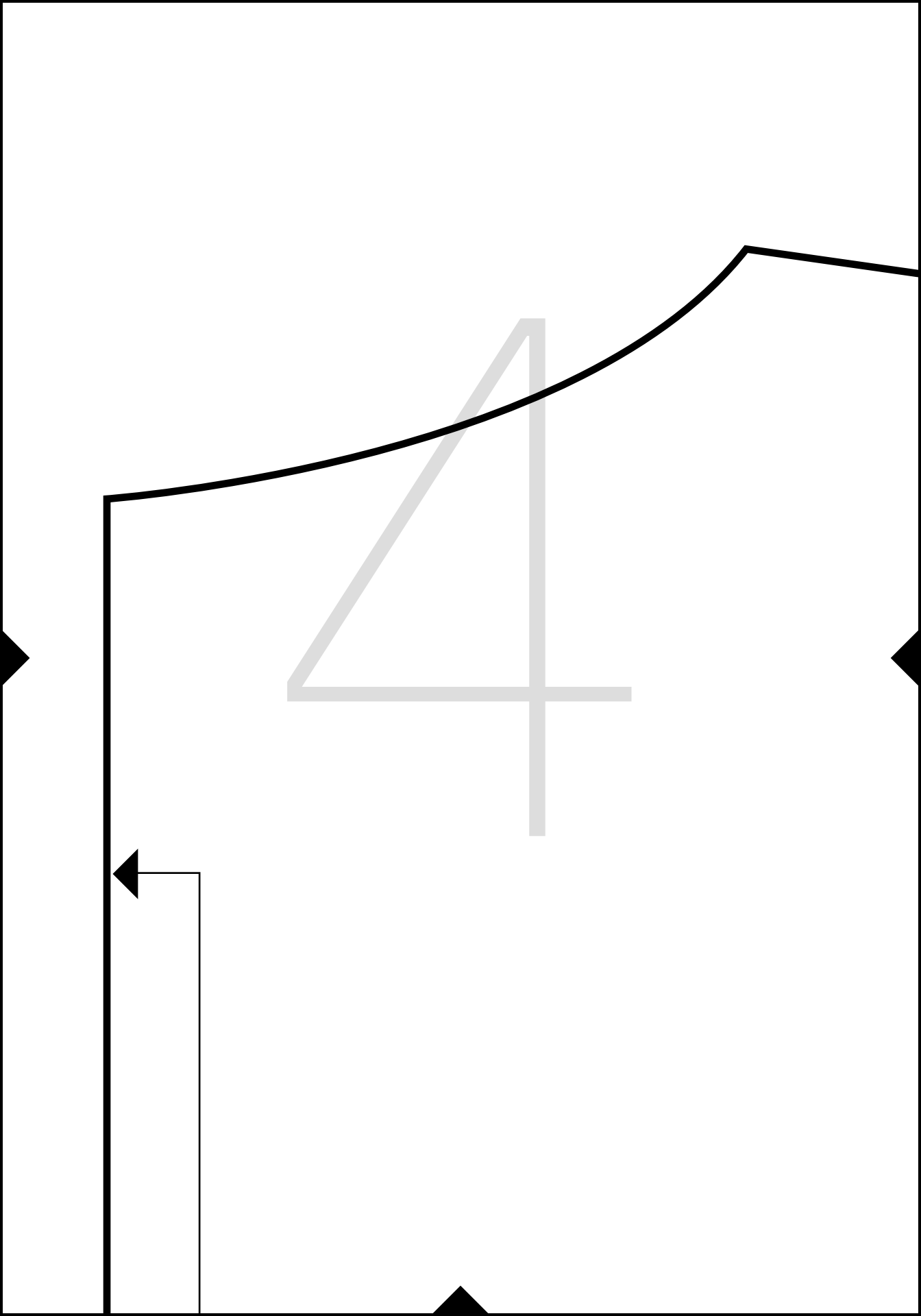
sewing patterns

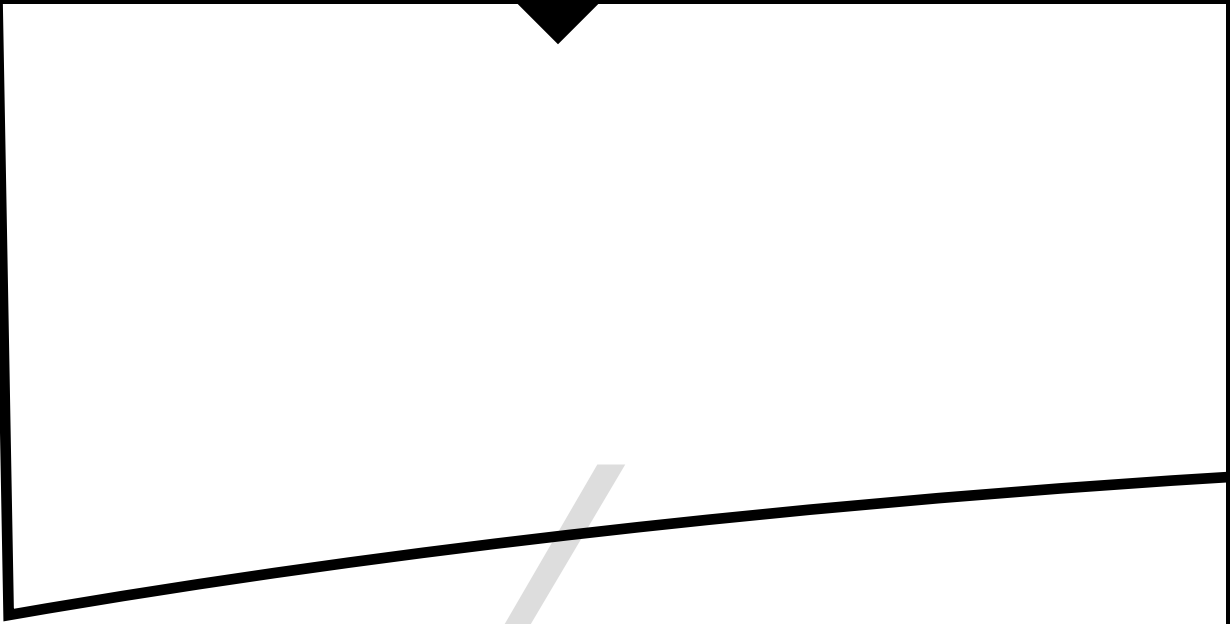
Getting Ready Robe  
Sleeve  
C

Cut 2 on Fold



3







SE

sew

Getting Re  
Fro

Cut 2 Mir

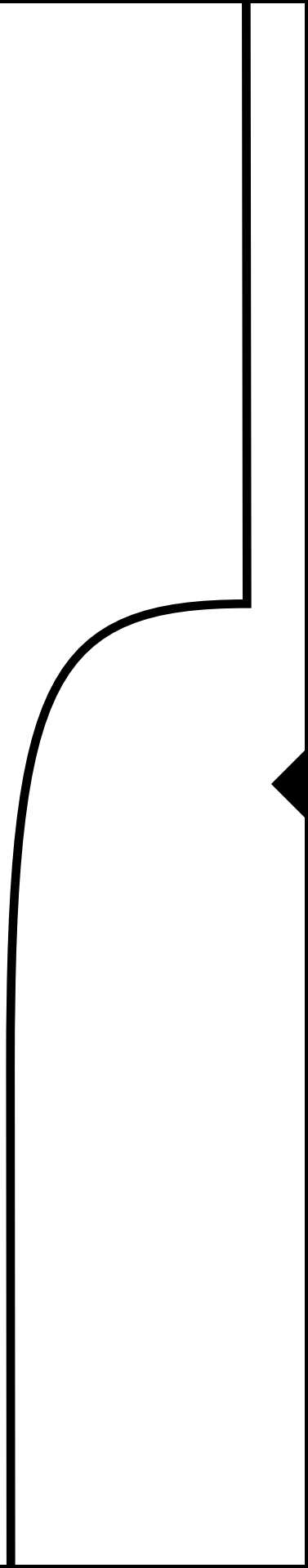
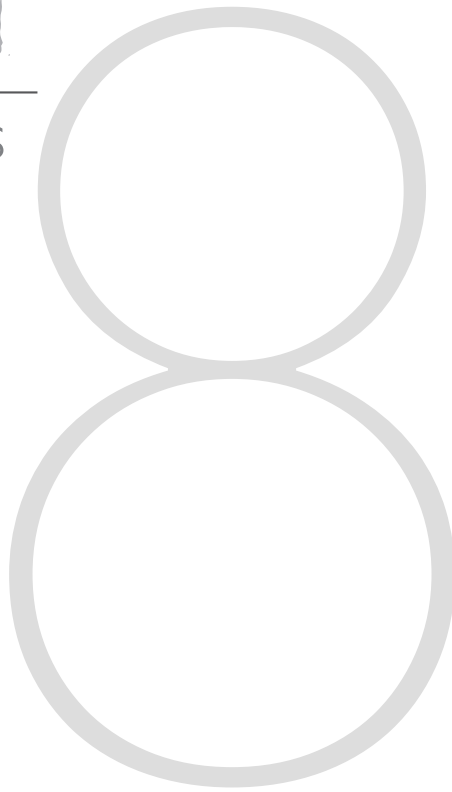
WBON

ing patterns

eady Robe

ont

ror Image





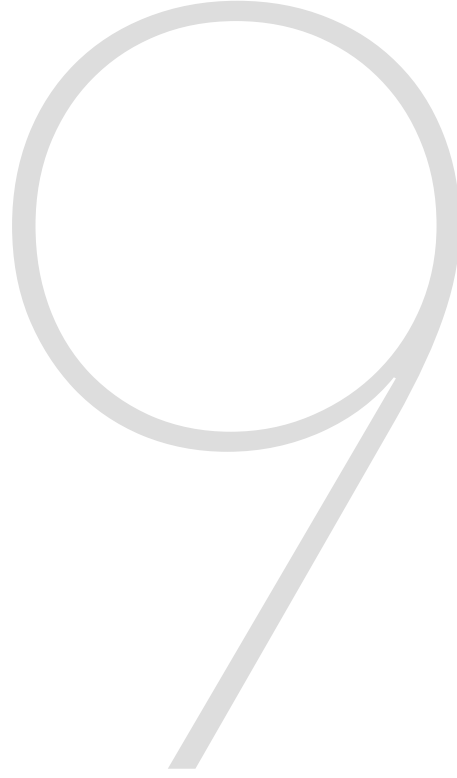
SE

sew

Getting R

B

Cut 1



CUT





**SEWBON**

sewing patterns

Getting Ready Robe  
Belt Loop

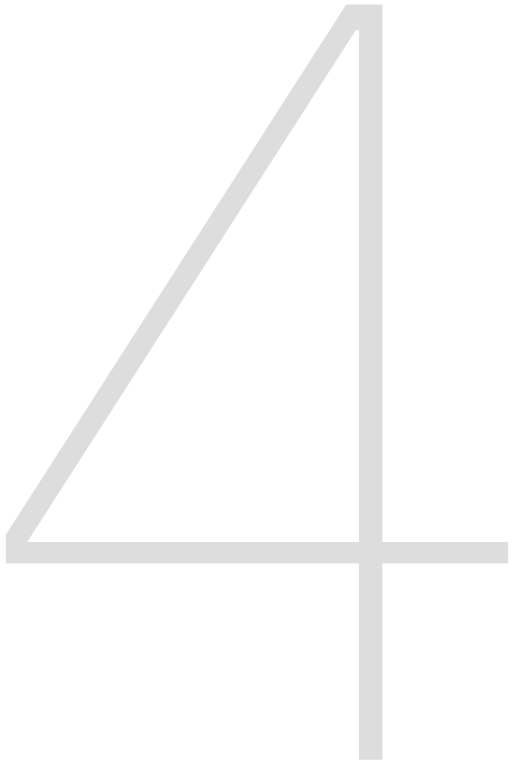
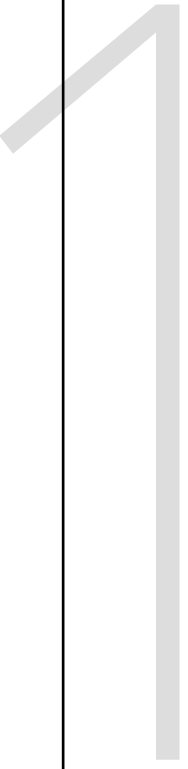
D

Cut 2

12

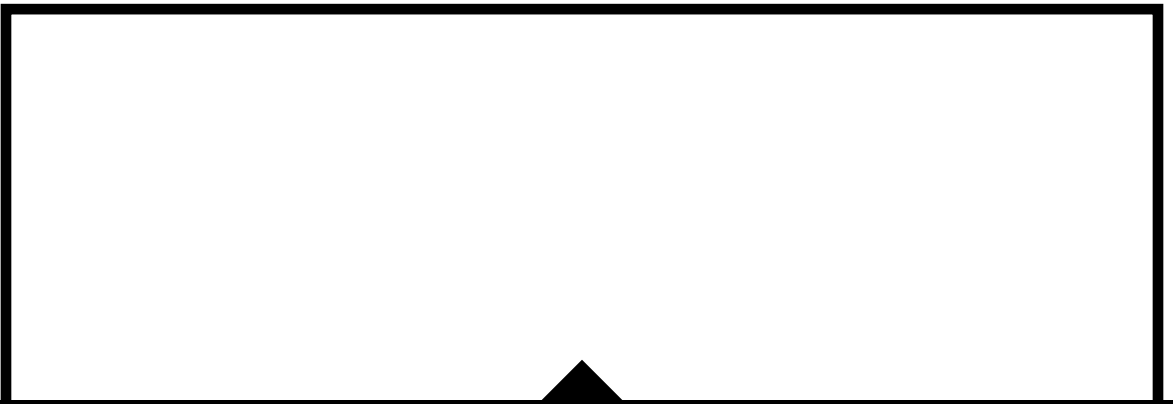
13

ON FOLD



1

6



17

1

8

19





**SEWBON**

sewing patterns

Getting Ready Robe  
Neckband  
E

Cut 2



**SEWBON**

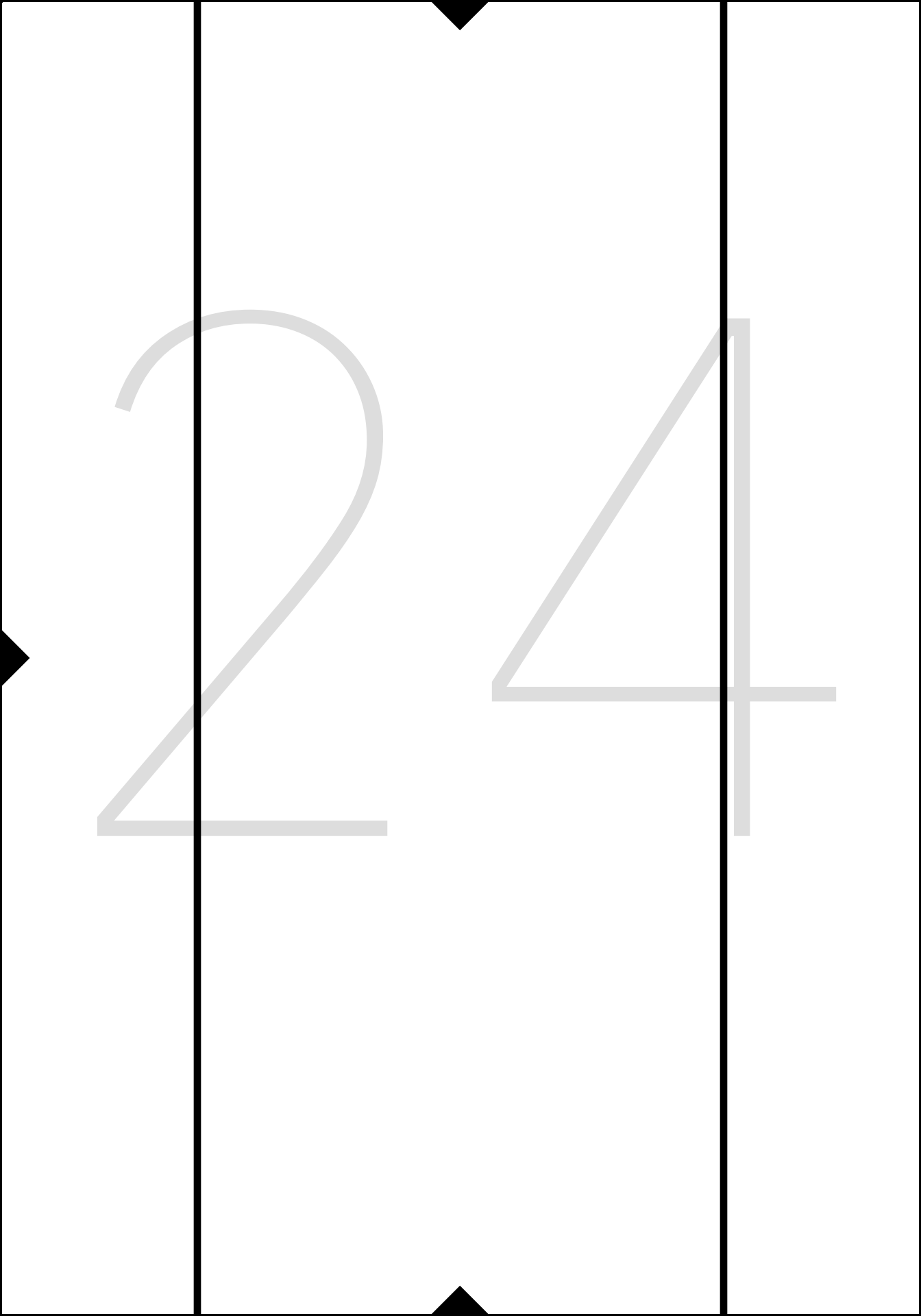
sewing patterns

Getting Ready Robe  
Waist Tie  
F

Cut 2

2

3



2

4

2

8

2

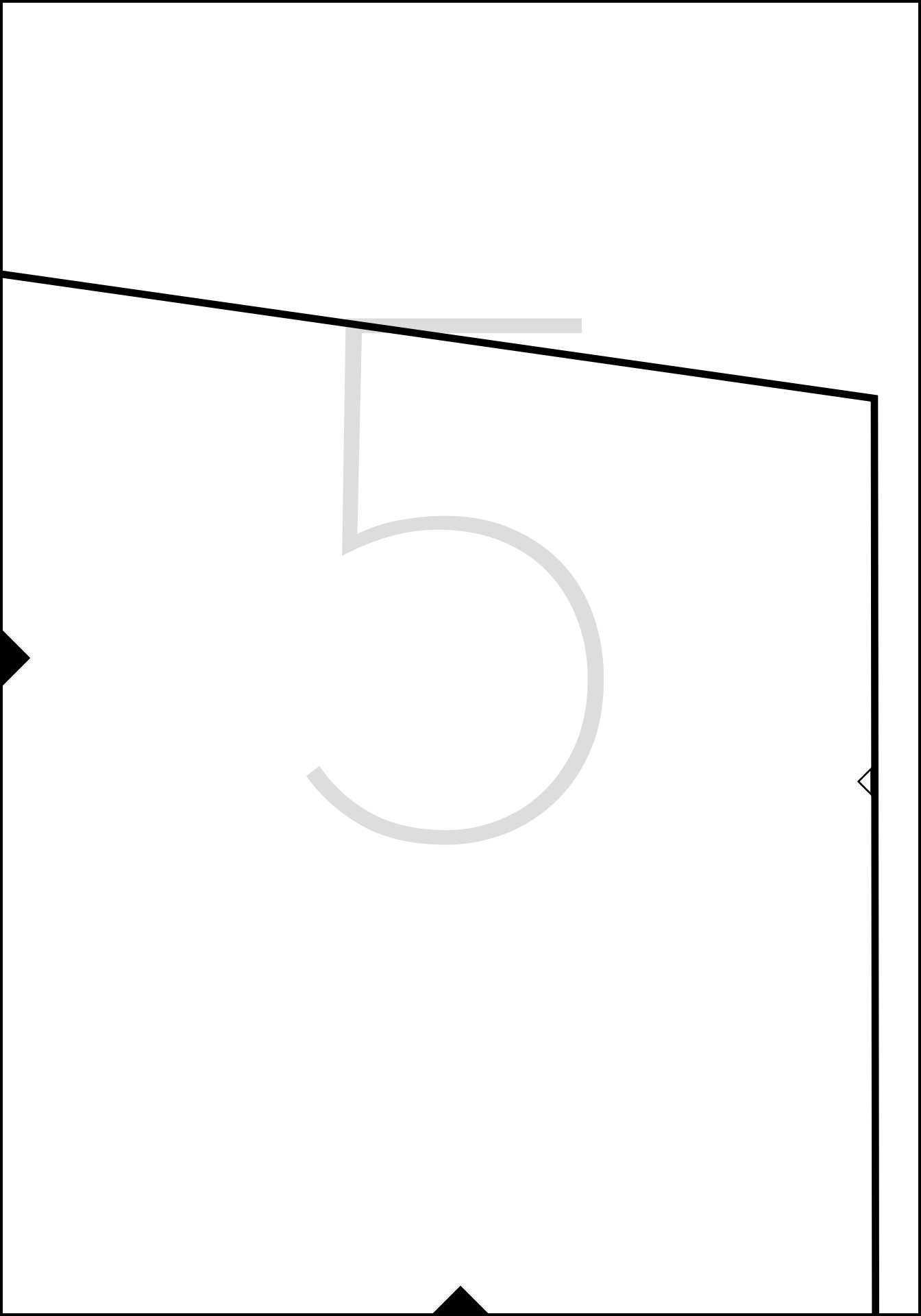
7



2



6





EWBON

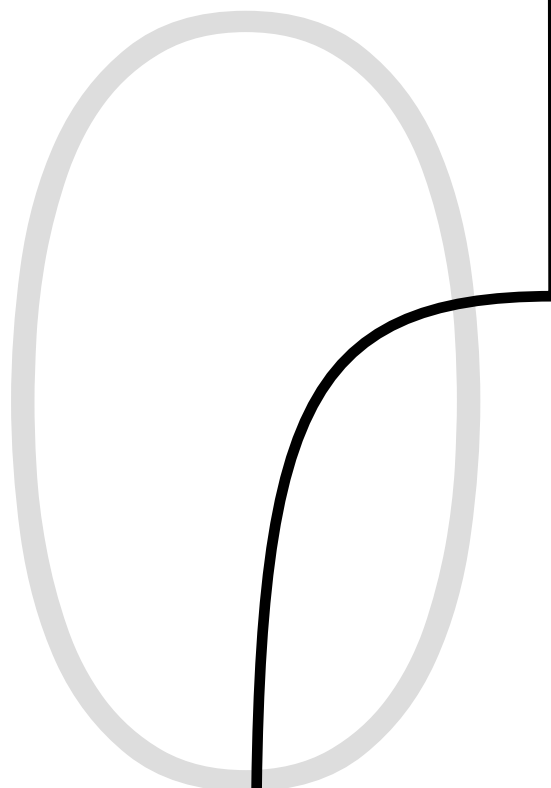
ewing patterns

Ready Robe

ack

B

On Fold



15

20

2

5