

Issue 74 August 2015

MOTIFS & TEMPLATES



Use these guides to get started today

FIND THE TEMPLATE YOU REQUIRE ON THE CONTENTS LIST BELOW AND JUST PRINT OUT THE PAGE OR PAGES YOU NEED FROM YOUR PRINT MENU

In your print menu, under Size Options, be sure to select to print 'Actual Size', instead of 'Fit to Page'

Page 2-8

Title: Flower collar dress

Designer: Kirsty Hartley

Magazine page: 16

Page 9-10

Title: Susie's stitch school

Designer: Susie Johns

Magazine page: 40

Page 11-17

Title: Patchwork bag & purse

Designer: Ellen Kharade

Magazine page: 48

Page 18-19

Title: Simple machine embroidery

Designer: Carolyn Letten

Magazine page: 66

Page 20-34

Title: Cuddly pyjama pouch

Designer: Jane Kharade

Magazine page: 78

Page 35-36

Title: Appliqué nautical set

Designer: Carolyn Letten

Magazine page: 80

Page 37-38

Title: Forest friends mobile

Designer: Jane Kharade

Magazine page: 85

Page 39-40

Title: Felt bunny

Designer: Sue Quinn

Magazine page: 88

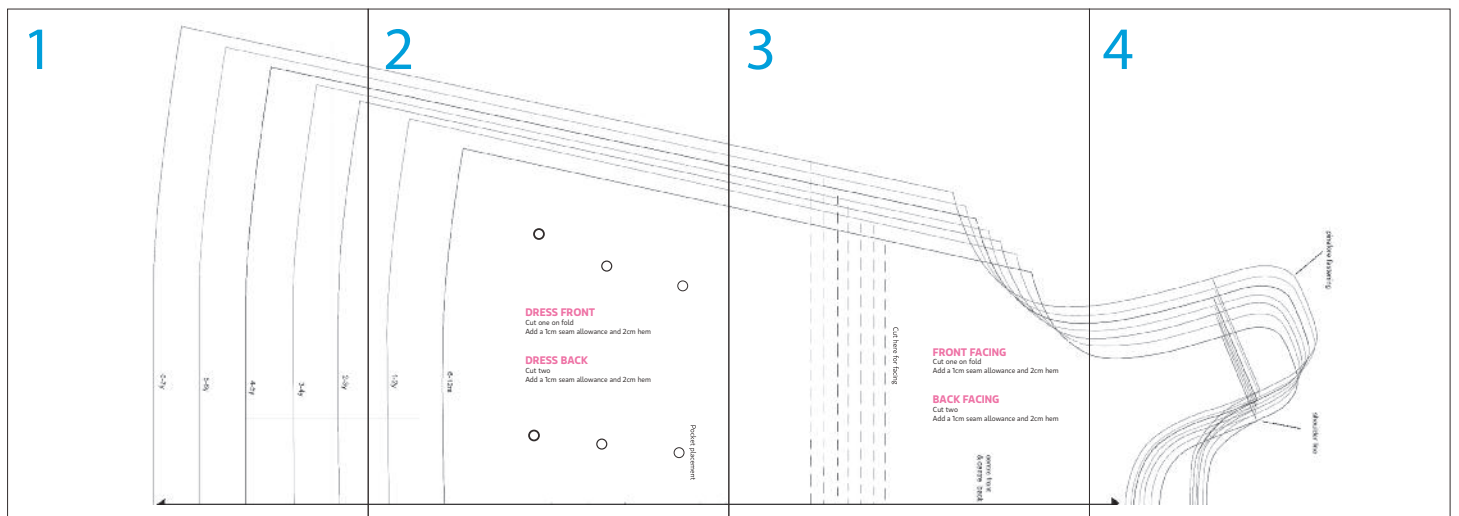
© Aceville Publications Ltd.

All projects, templates and patterns are for personal home use only and cannot be sold or used for commercial purposes.

Title: Flower collar dress

Designer: Kirsty Hartley

Magazine page: 16



2

1-2y

6-12m

DRESS FRONT

Cut one on fold
Add a 1cm seam allowance and 2cm hem

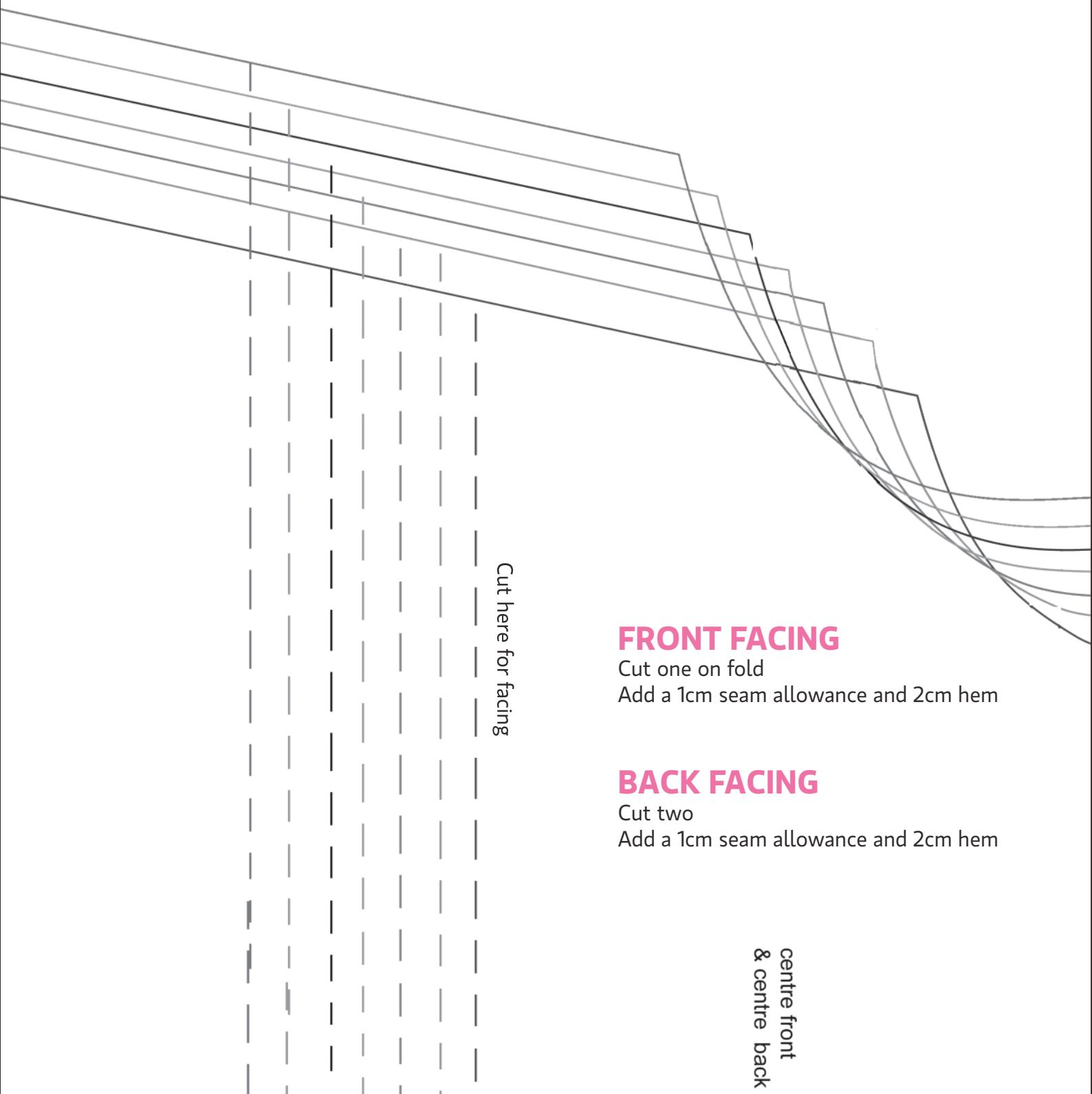
DRESS BACK

Cut two
Add a 1cm seam allowance and 2cm hem

Pocket placement



3



Cut here for facing

FRONT FACING

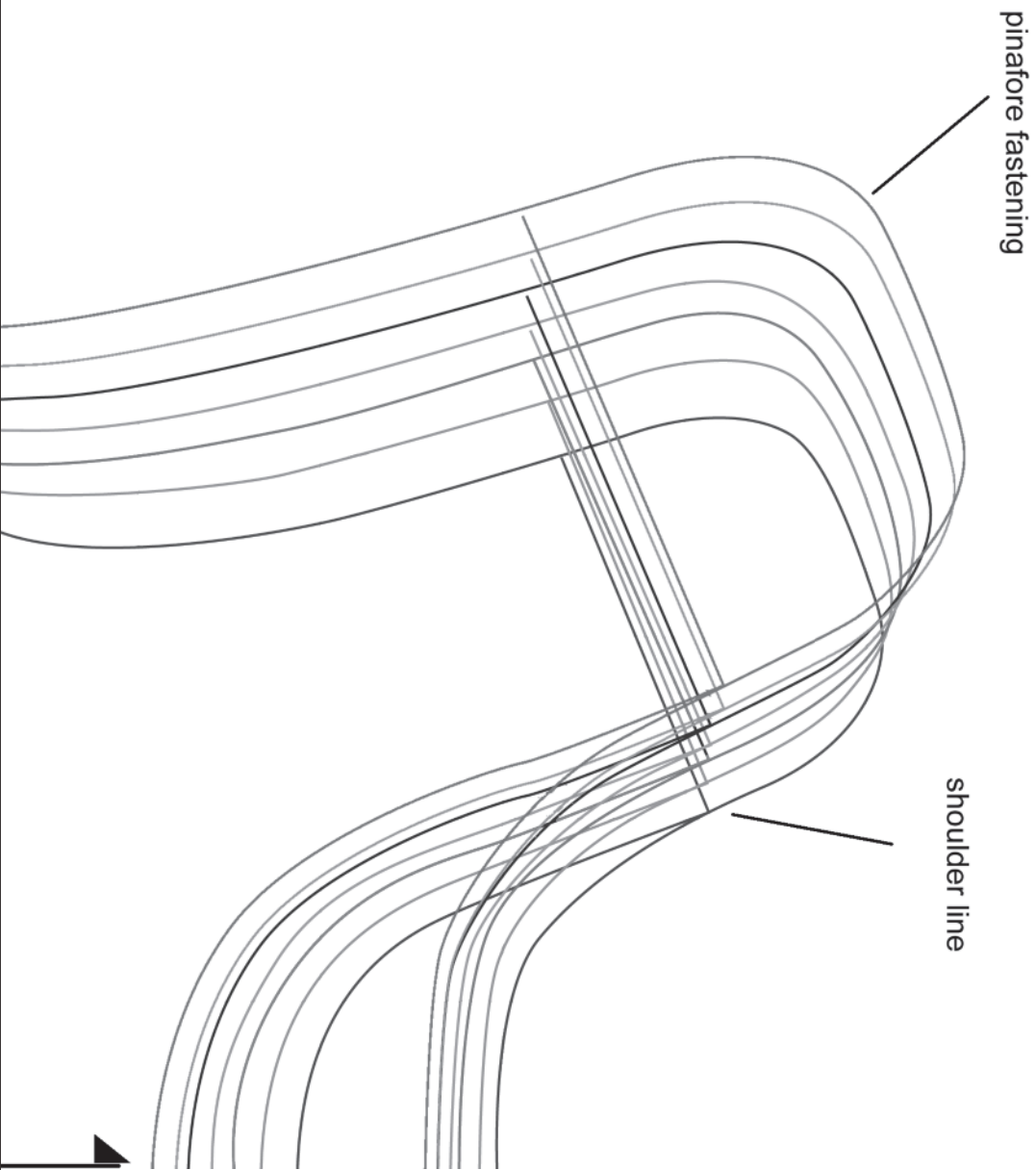
Cut one on fold
Add a 1cm seam allowance and 2cm hem

BACK FACING

Cut two
Add a 1cm seam allowance and 2cm hem

centre front
& centre back

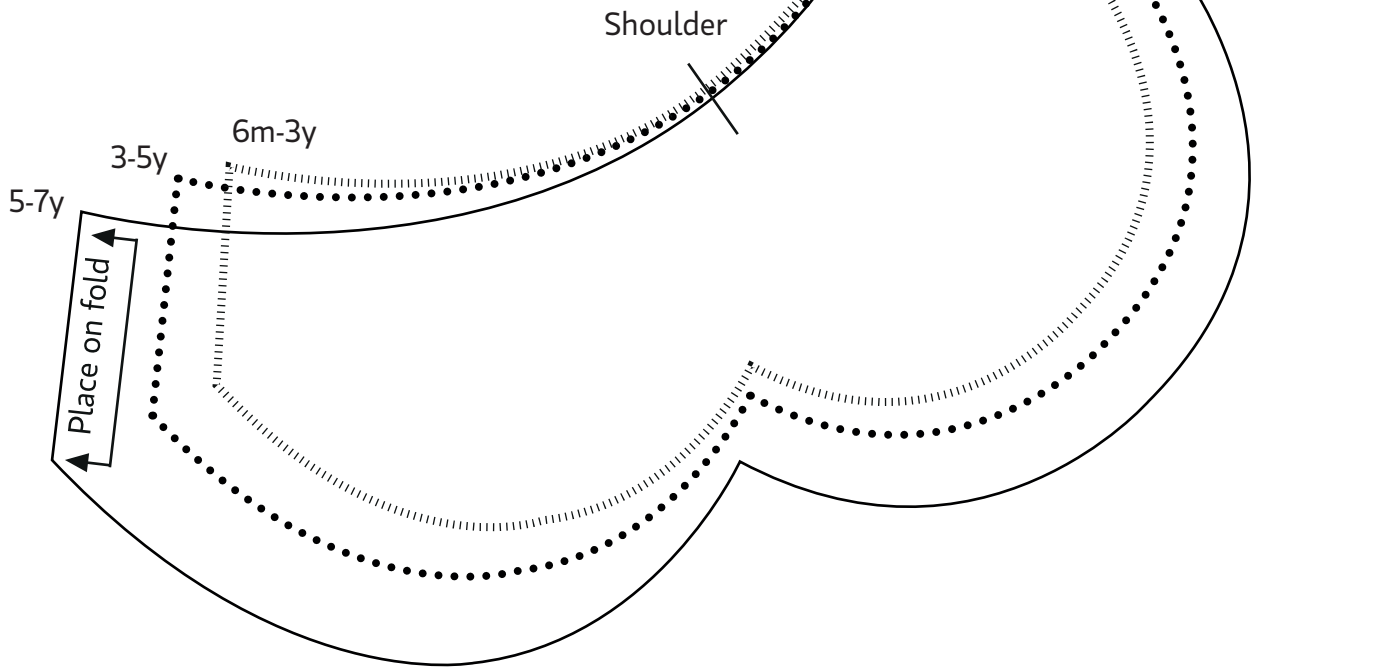
4



Centre back

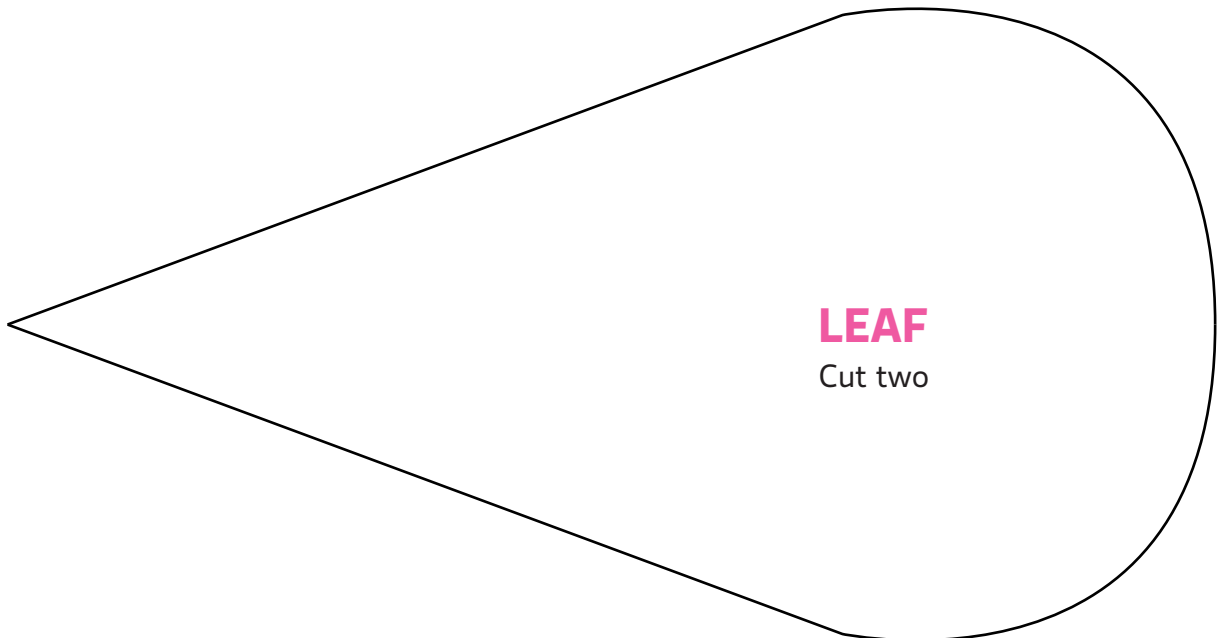
COLLAR

Cut two on fold
Add a 1cm seam allowance

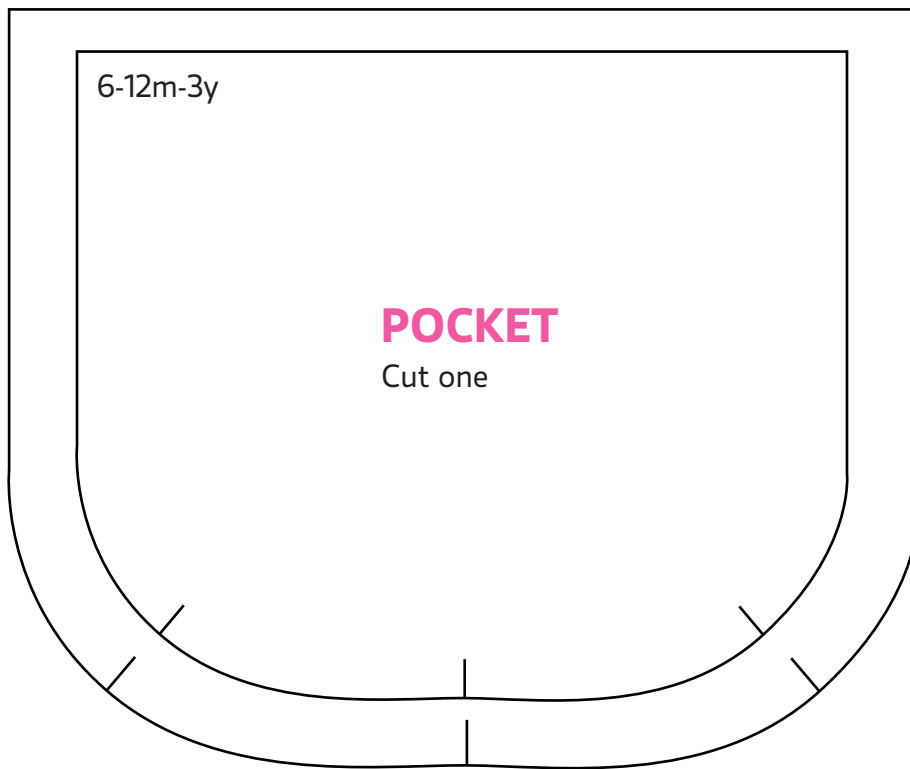


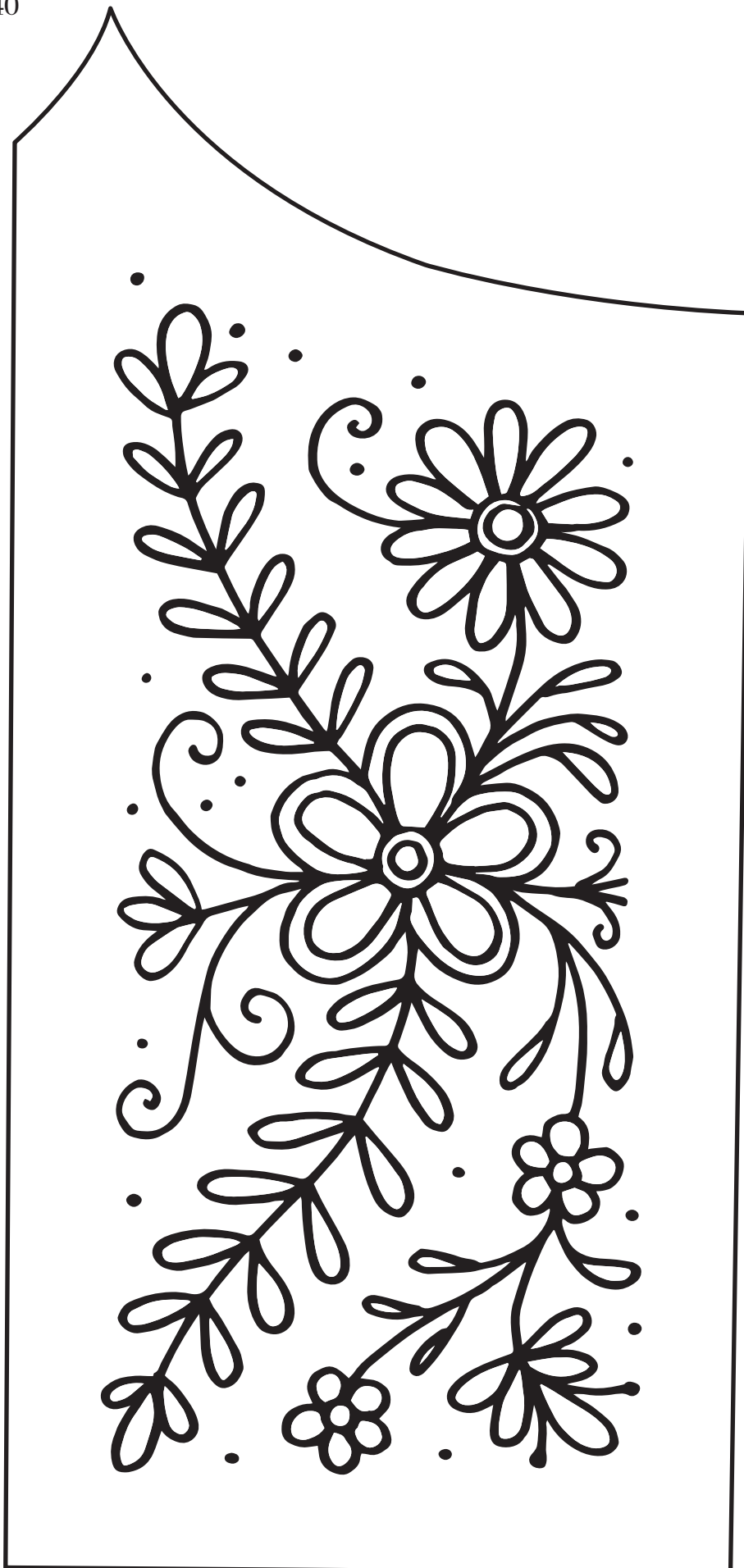
LEAF

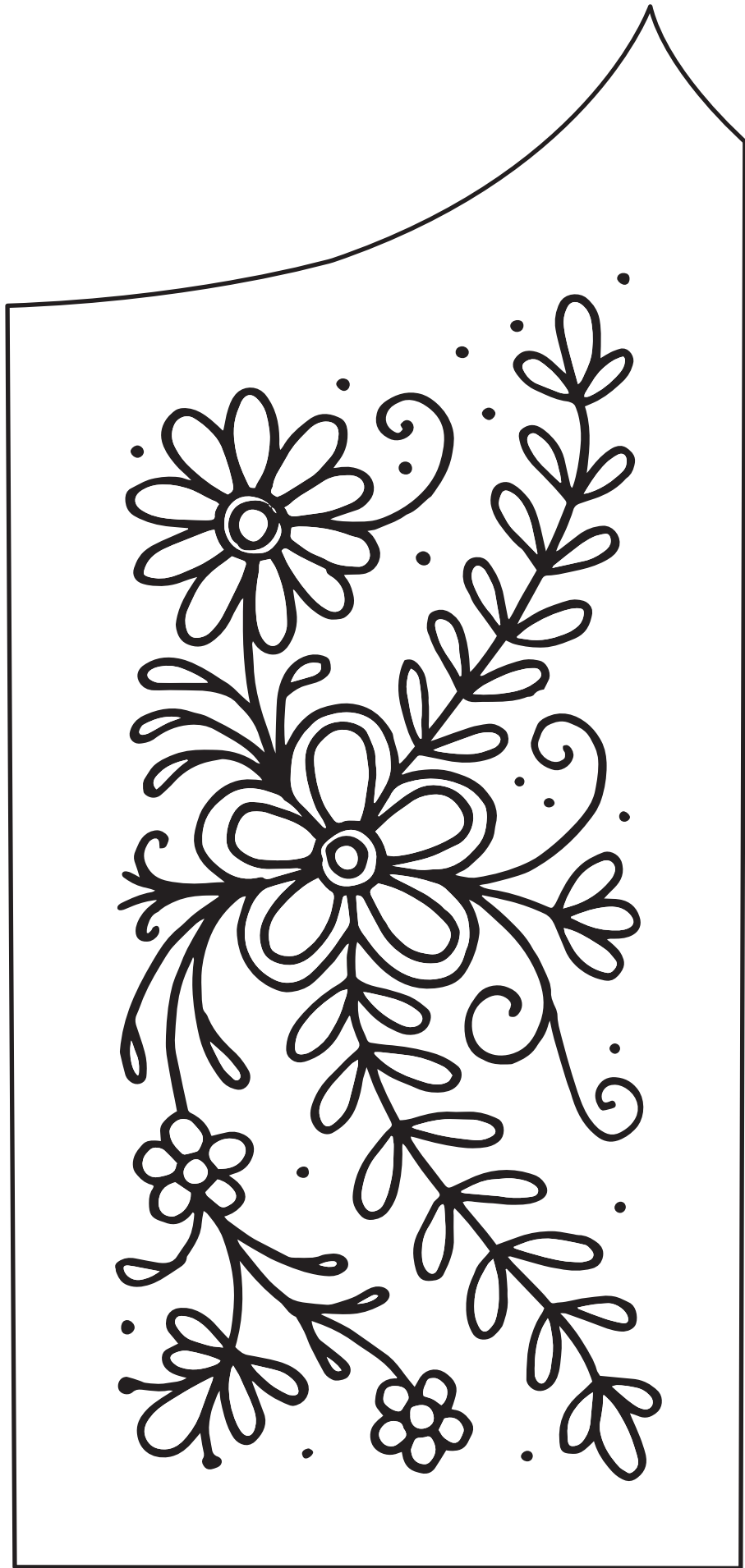
Cut two

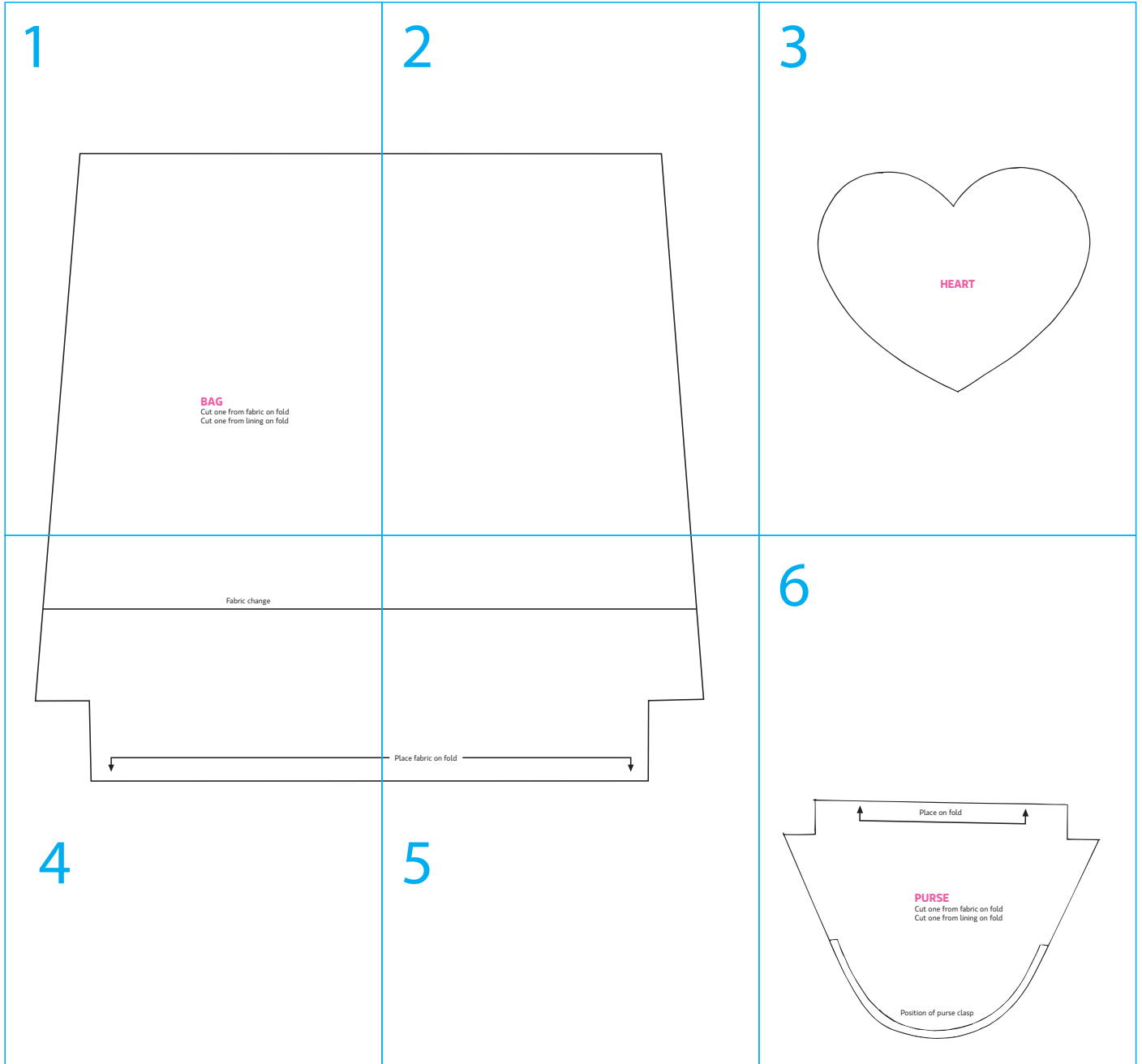


4-7y









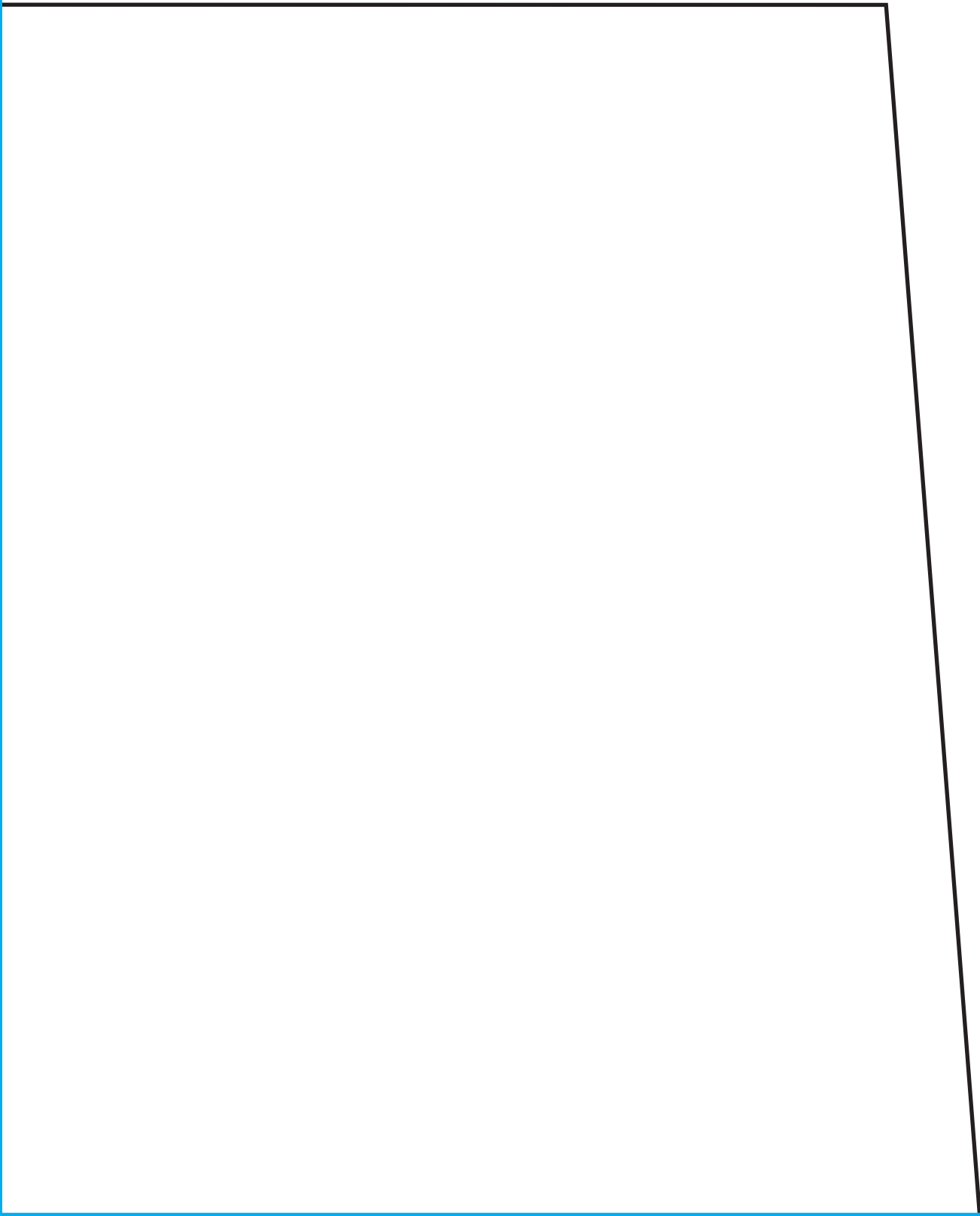
1



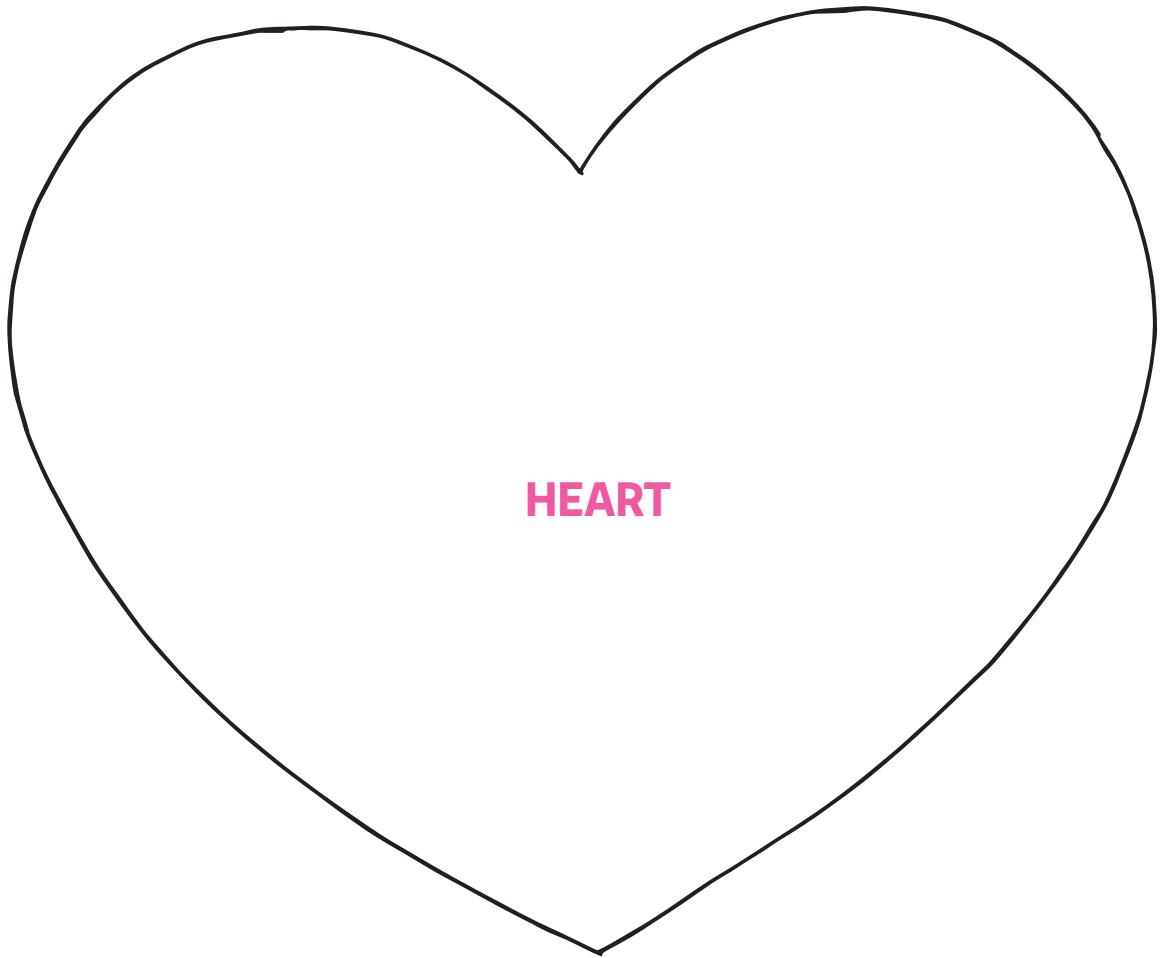
BAG

Cut one from fabric on fold
Cut one from lining on fold

2

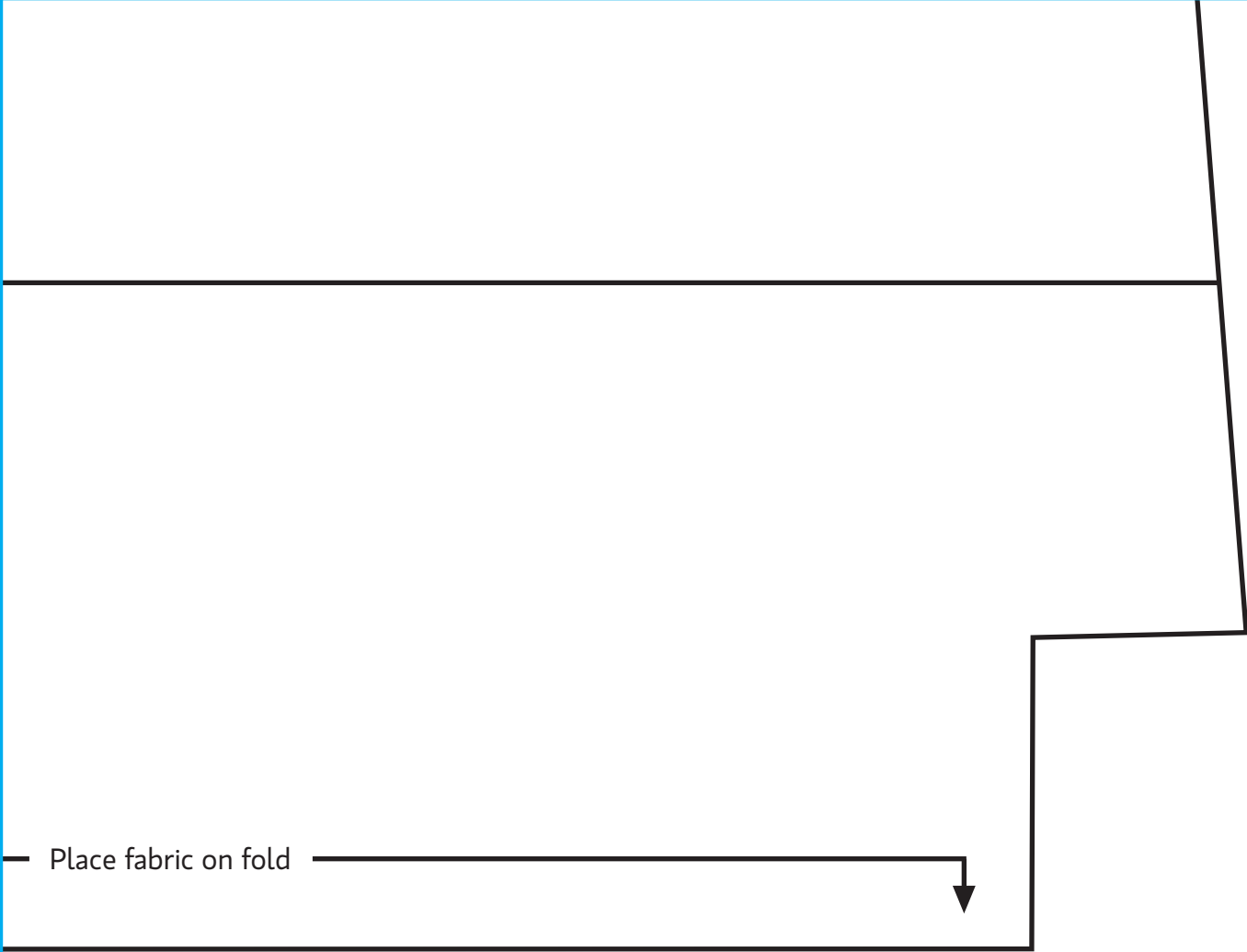


3



Fabric change

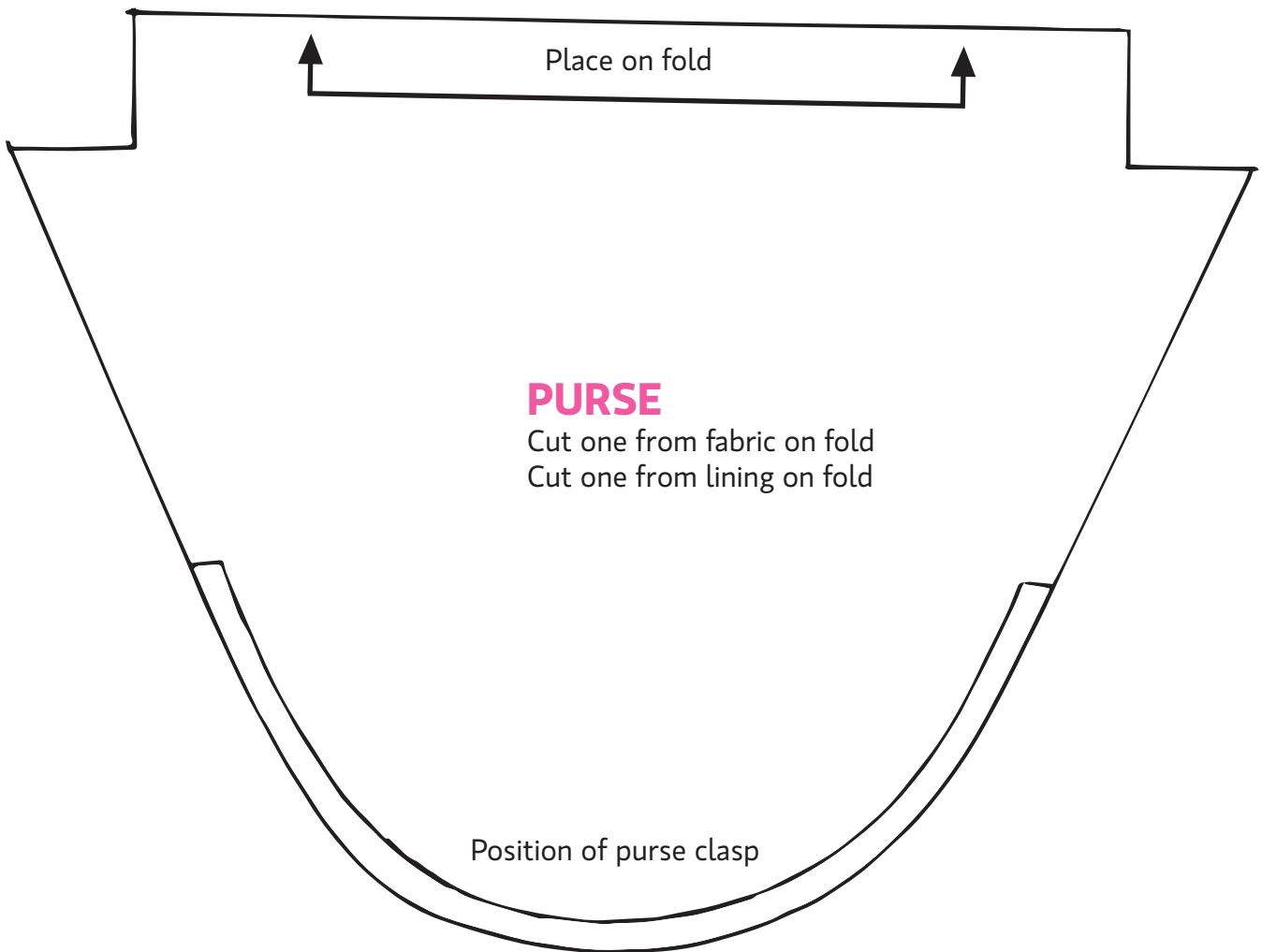
4



Place fabric on fold

5

6

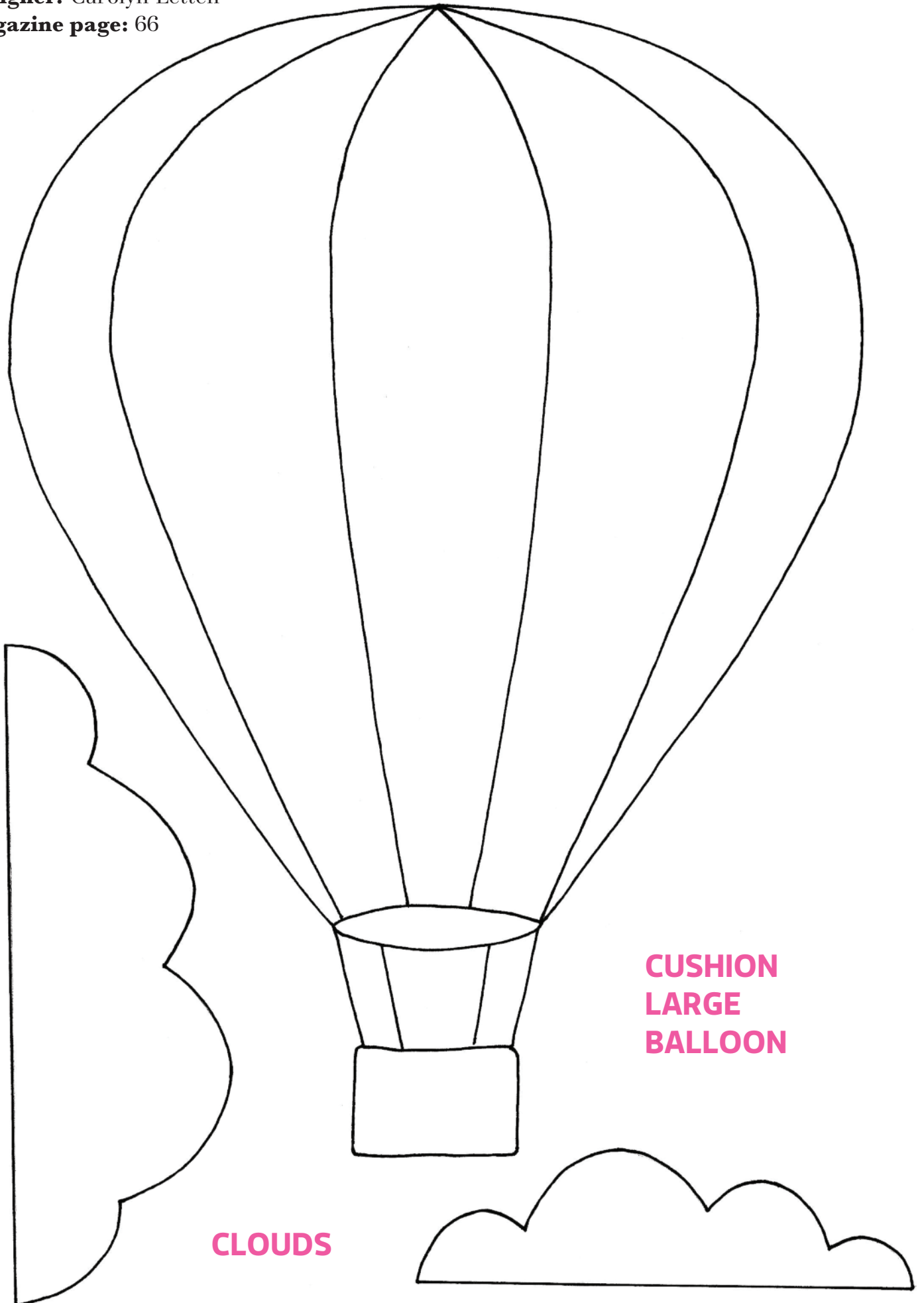


Page 18-19

Title: Simple machine embroidery

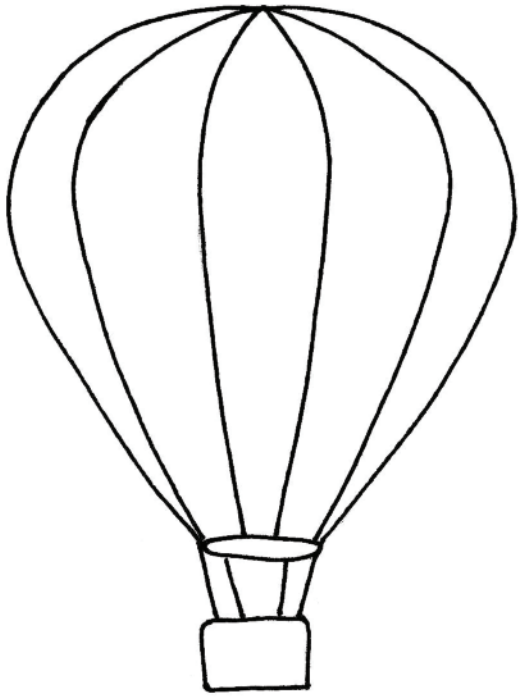
Designer: Carolyn Letten

Magazine page: 66

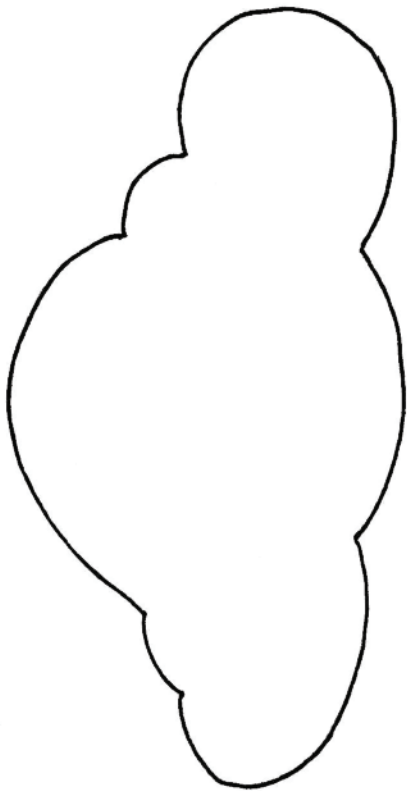


**CUSHION
LARGE
BALLOON**

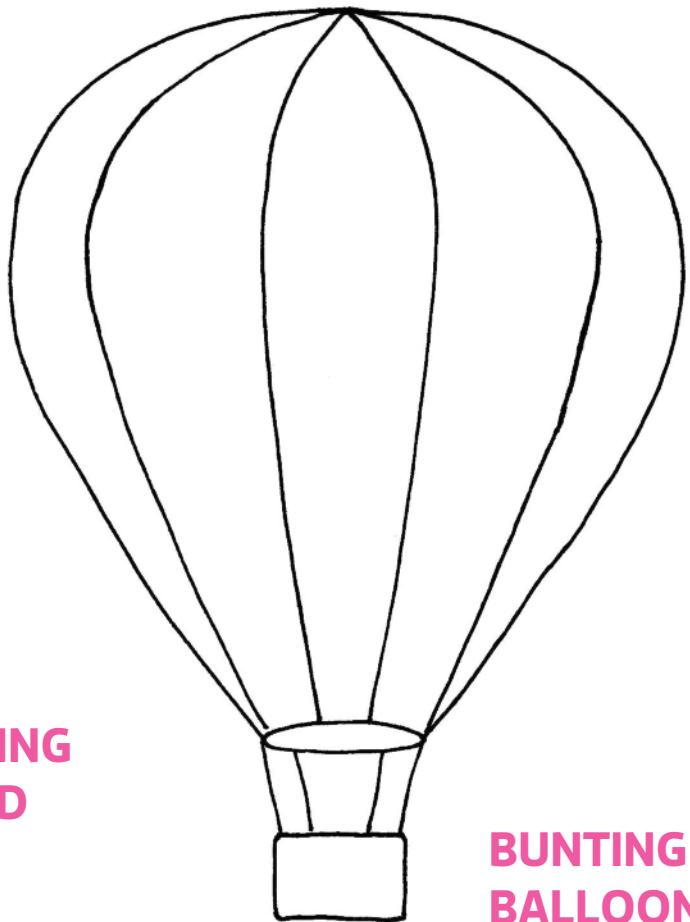
CLOUDS



**CUSHION
SMALL
BALLOON**



**BUNTING
CLOUD**

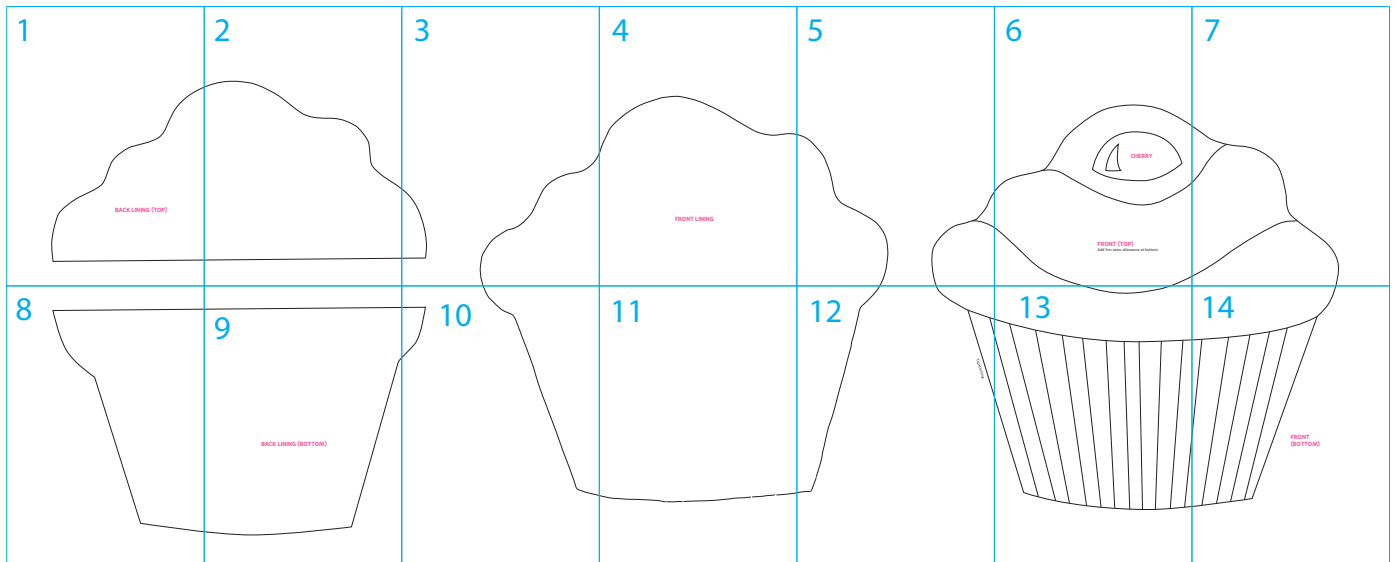


**BUNTING
BALLOON**

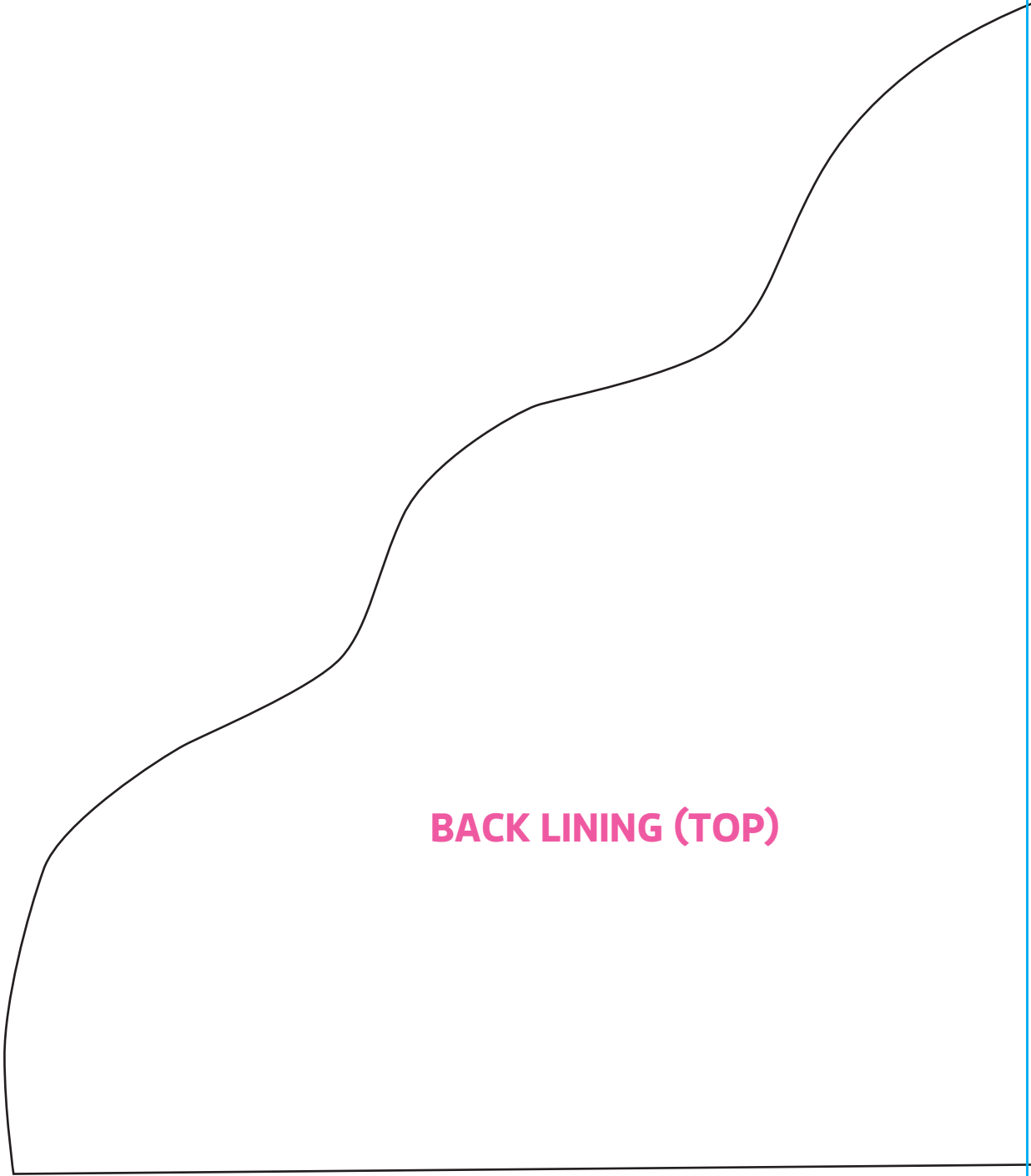
Title: Cuddly pyjama pouch

Designer: Jane Kharade

Magazine page: 78

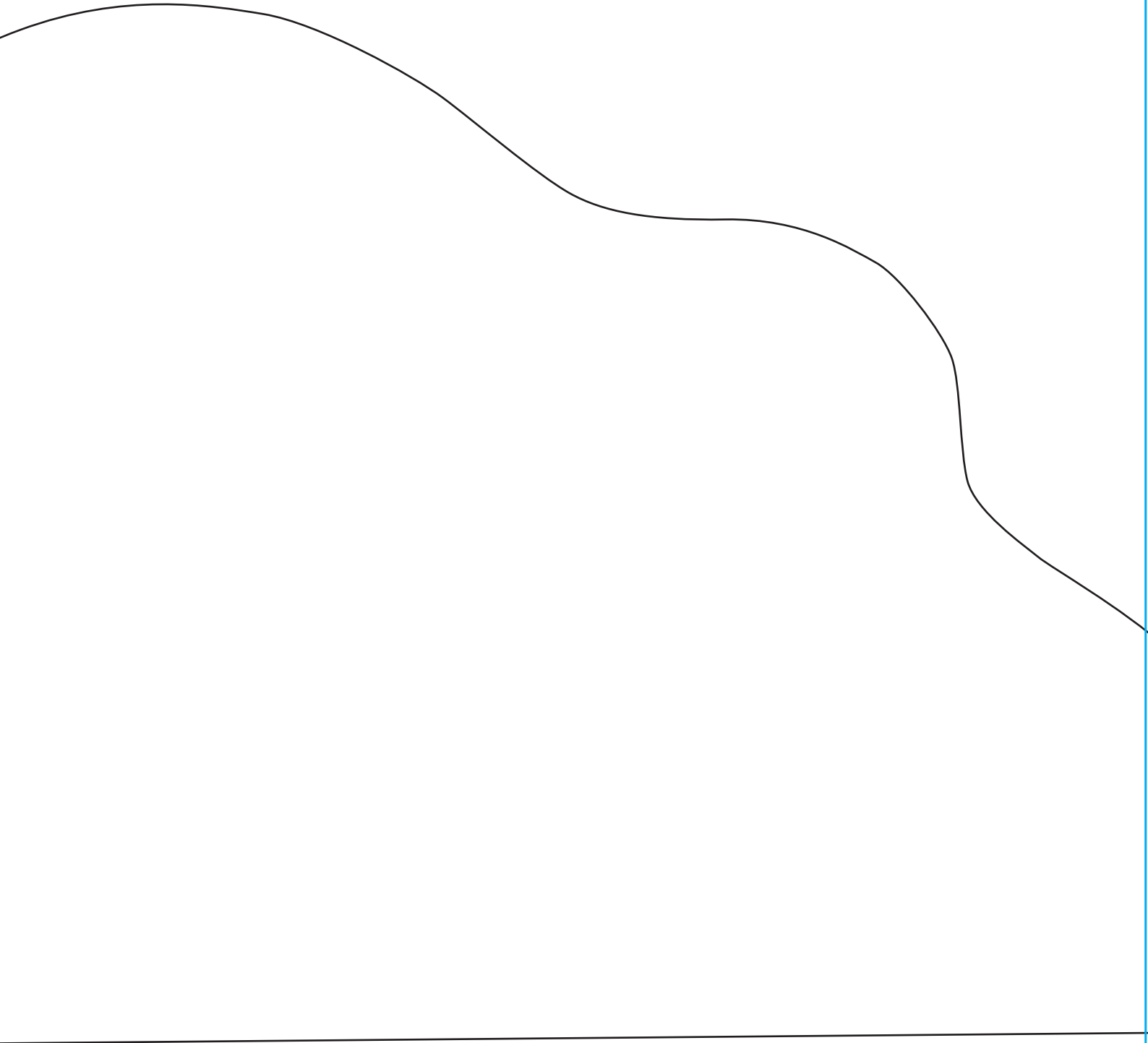


1

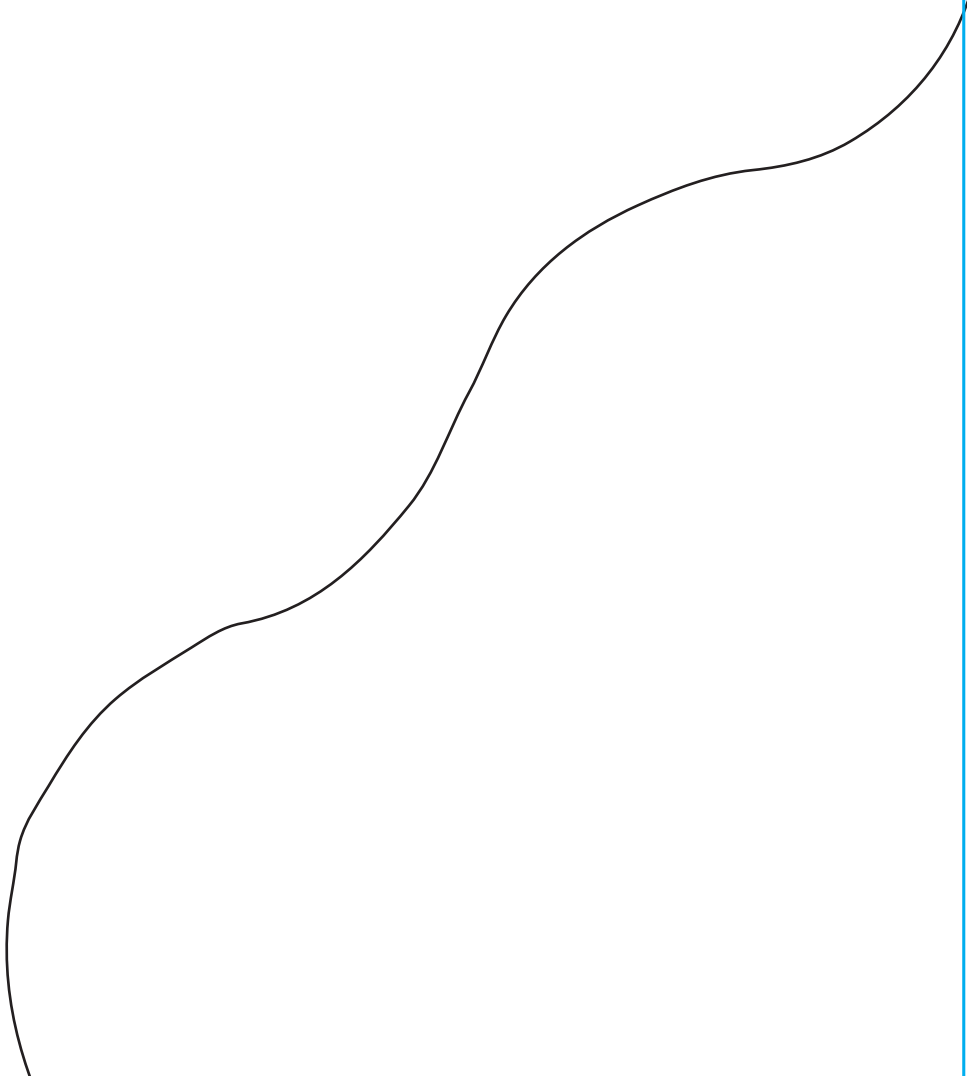


BACK LINING (TOP)

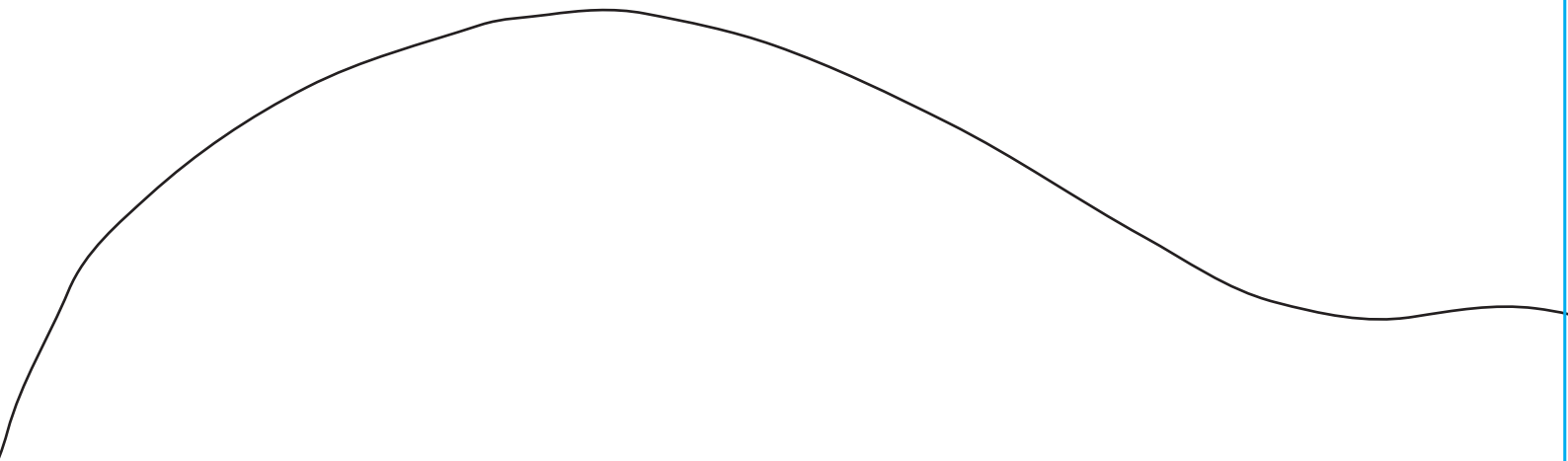
2



3

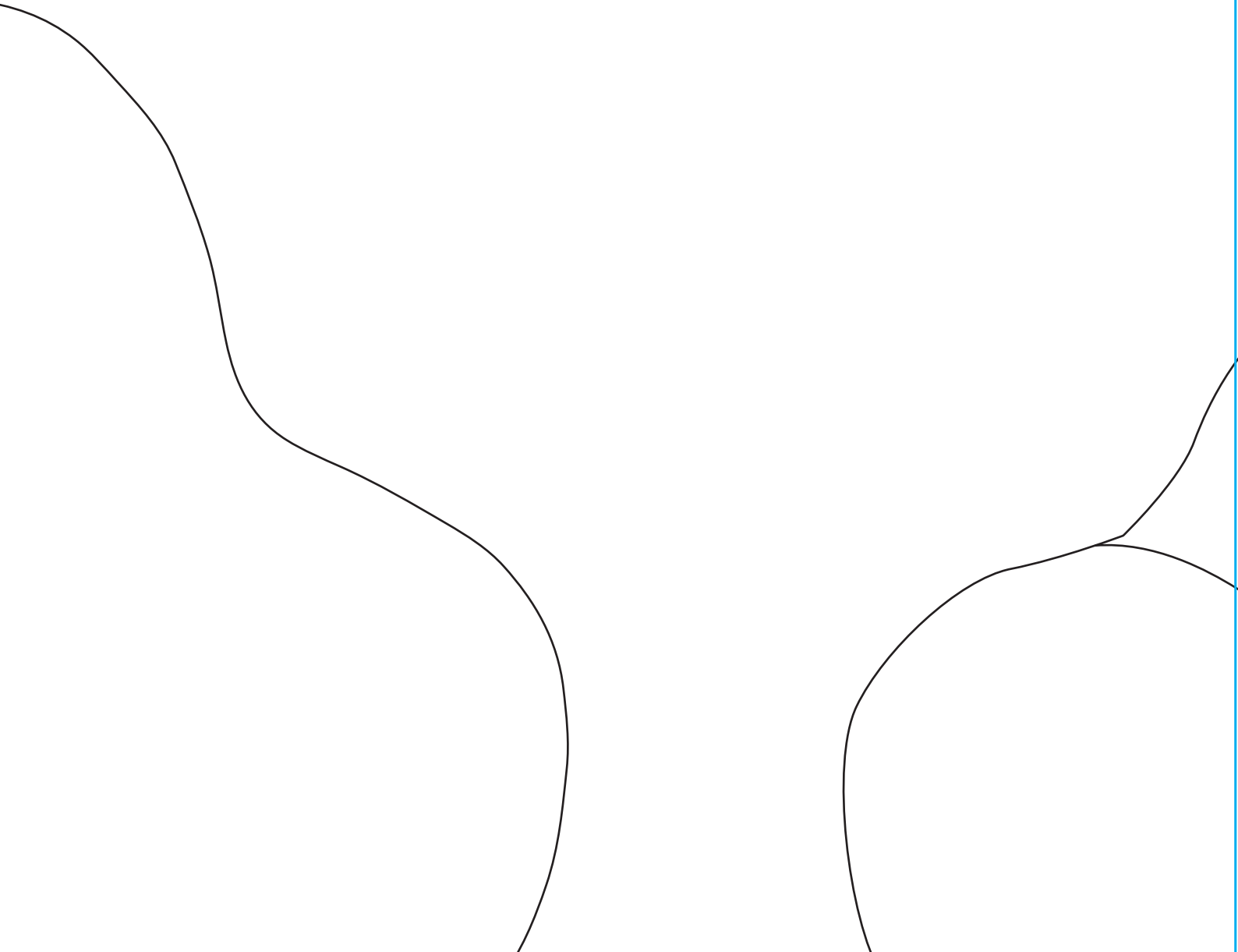


4

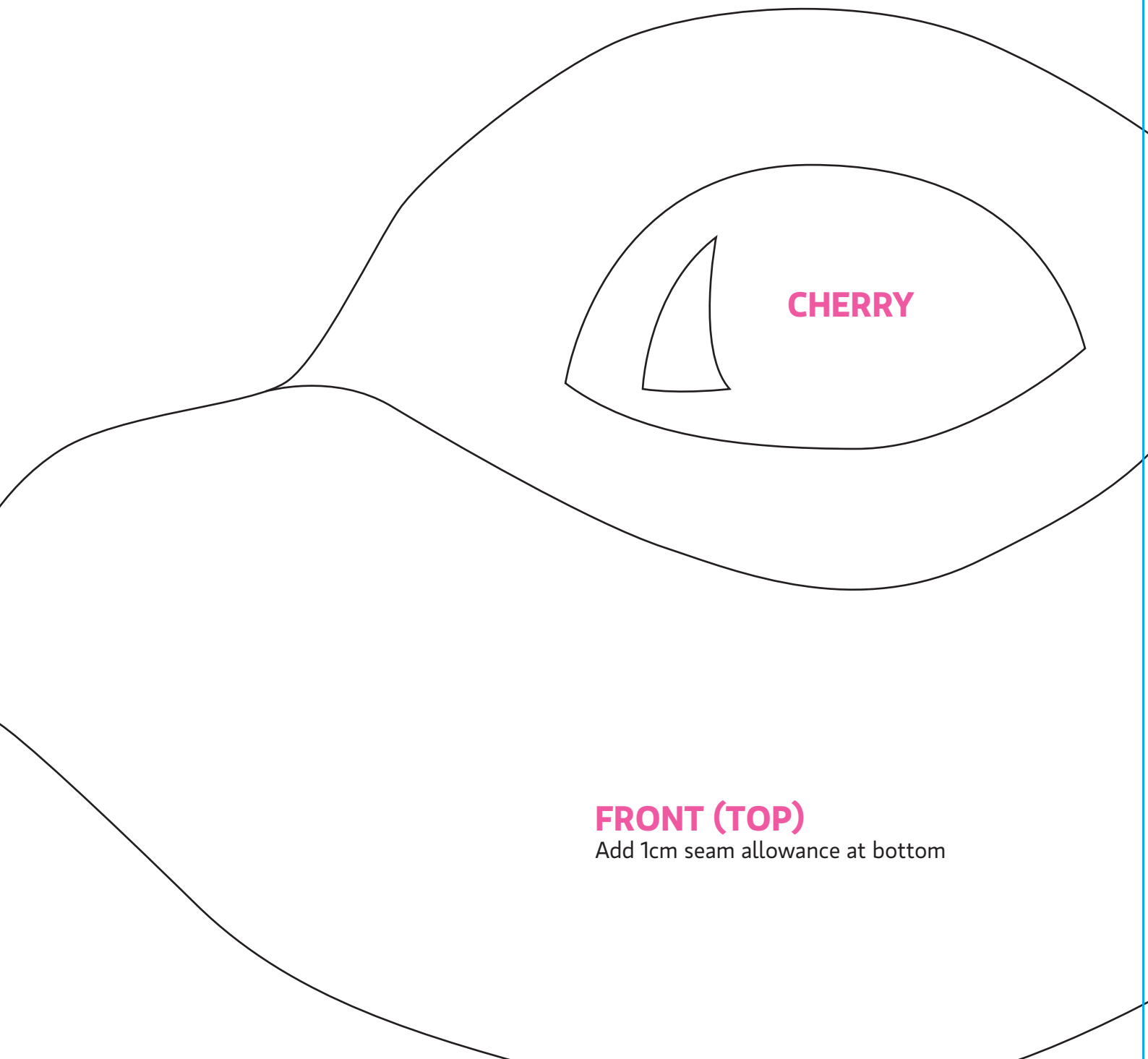


FRONT LINING

5



6



CHERRY

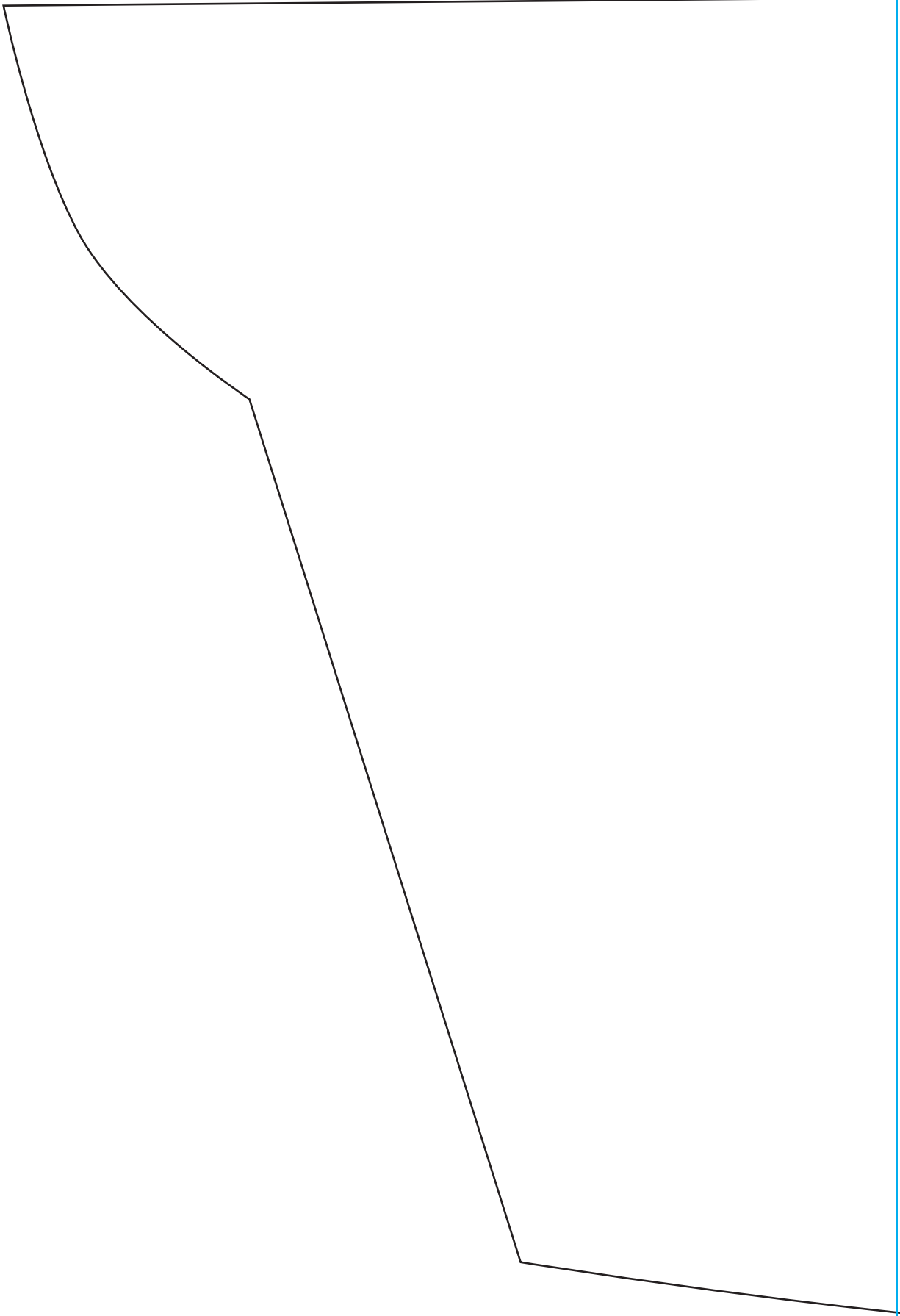
FRONT (TOP)

Add 1cm seam allowance at bottom

7



8



9

BACK LINING (BOTTOM)



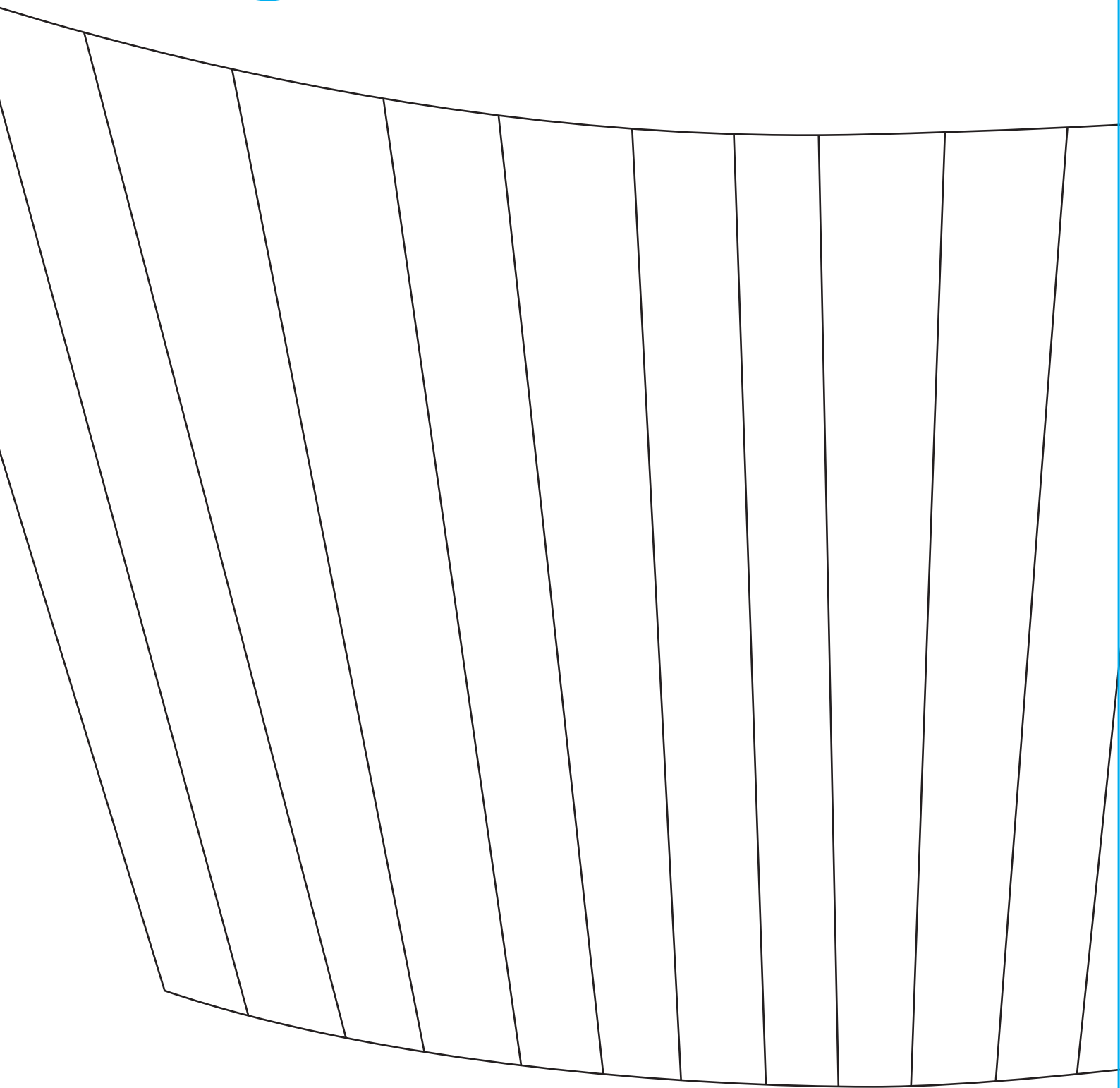
10

11

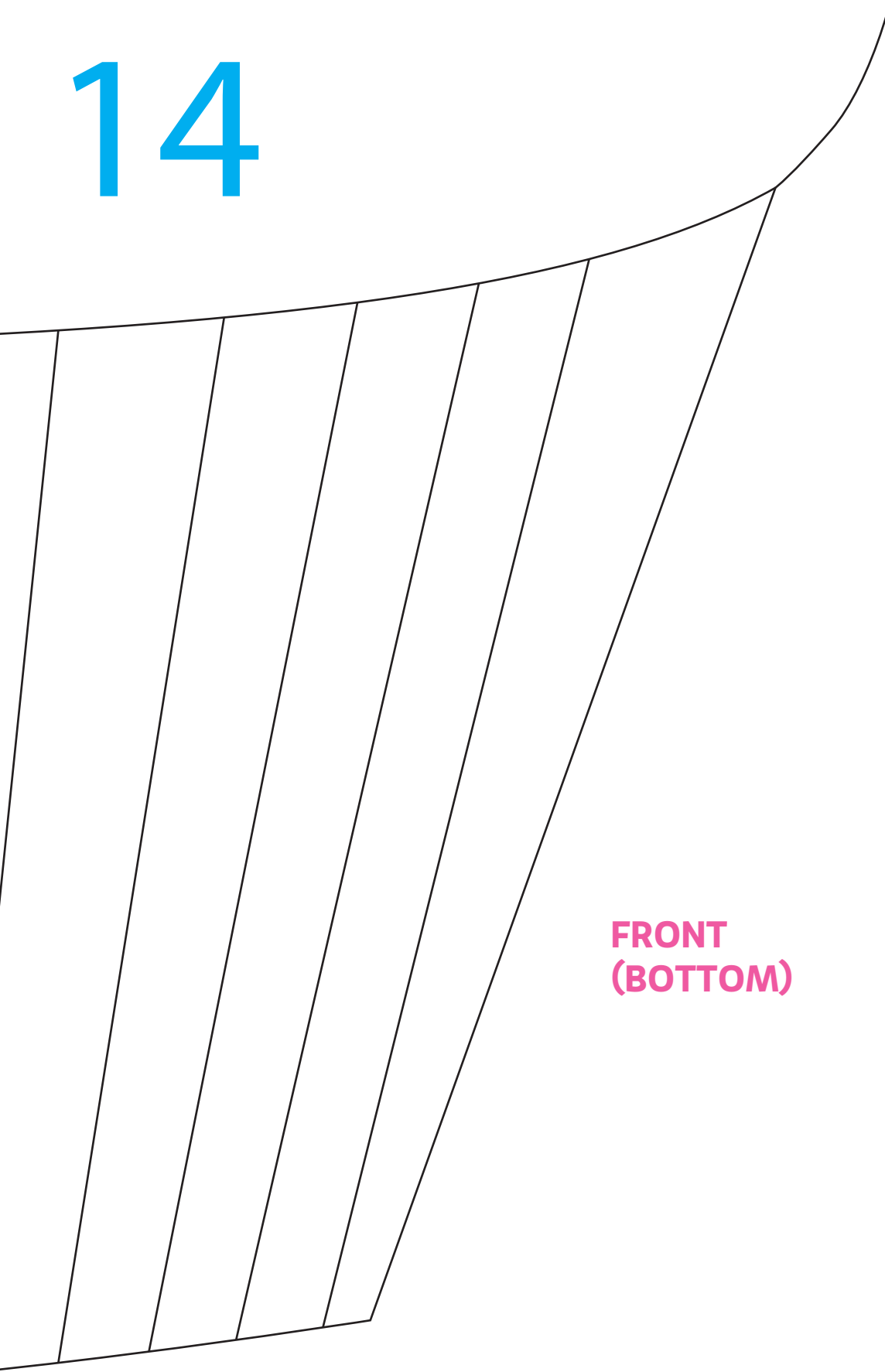
12

Topstitching

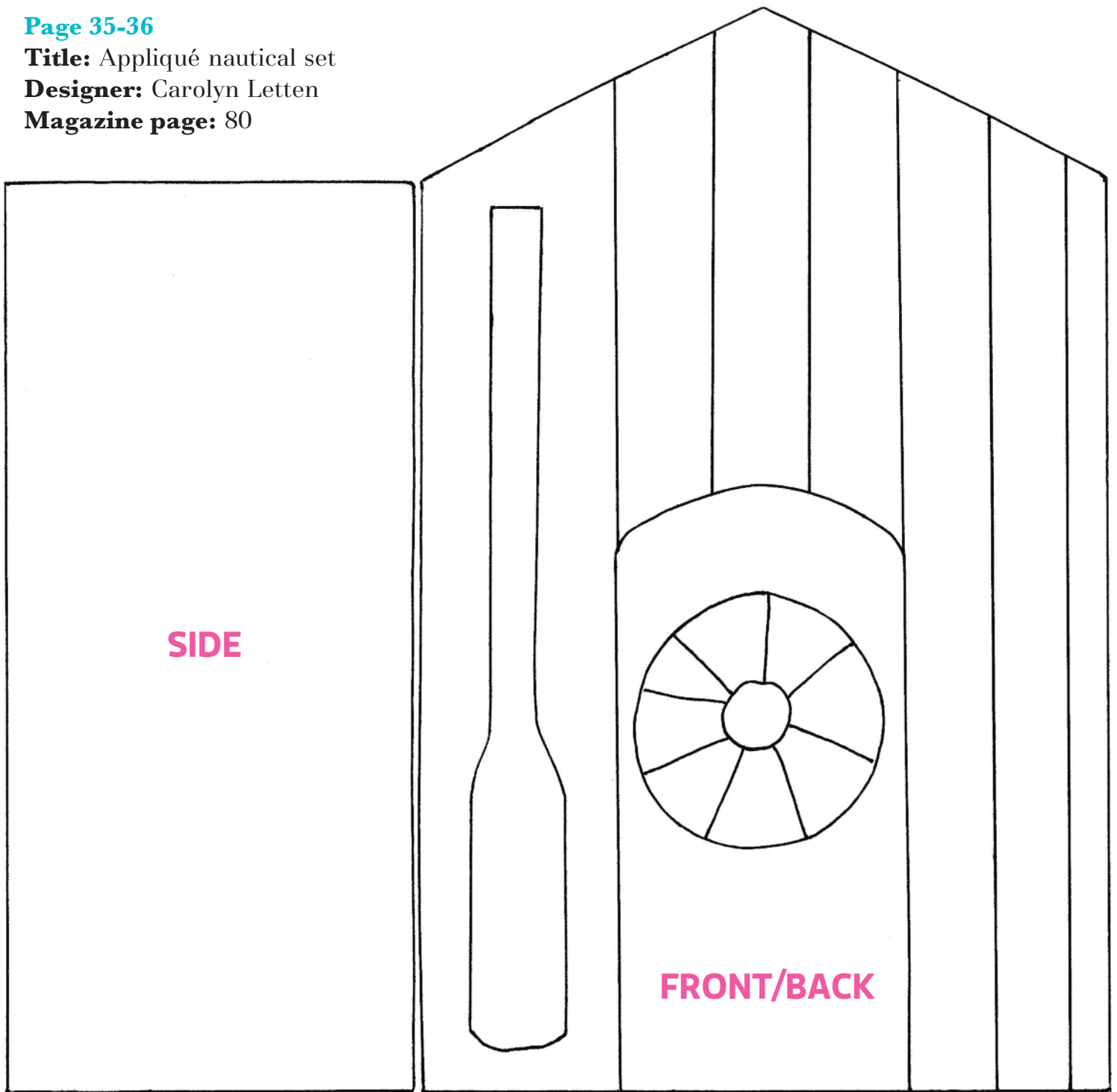
13



14



**FRONT
(BOTTOM)**

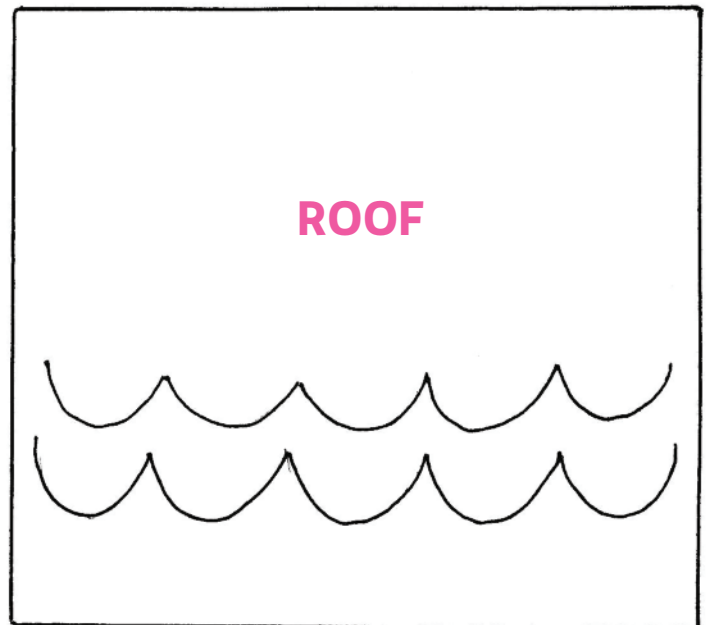


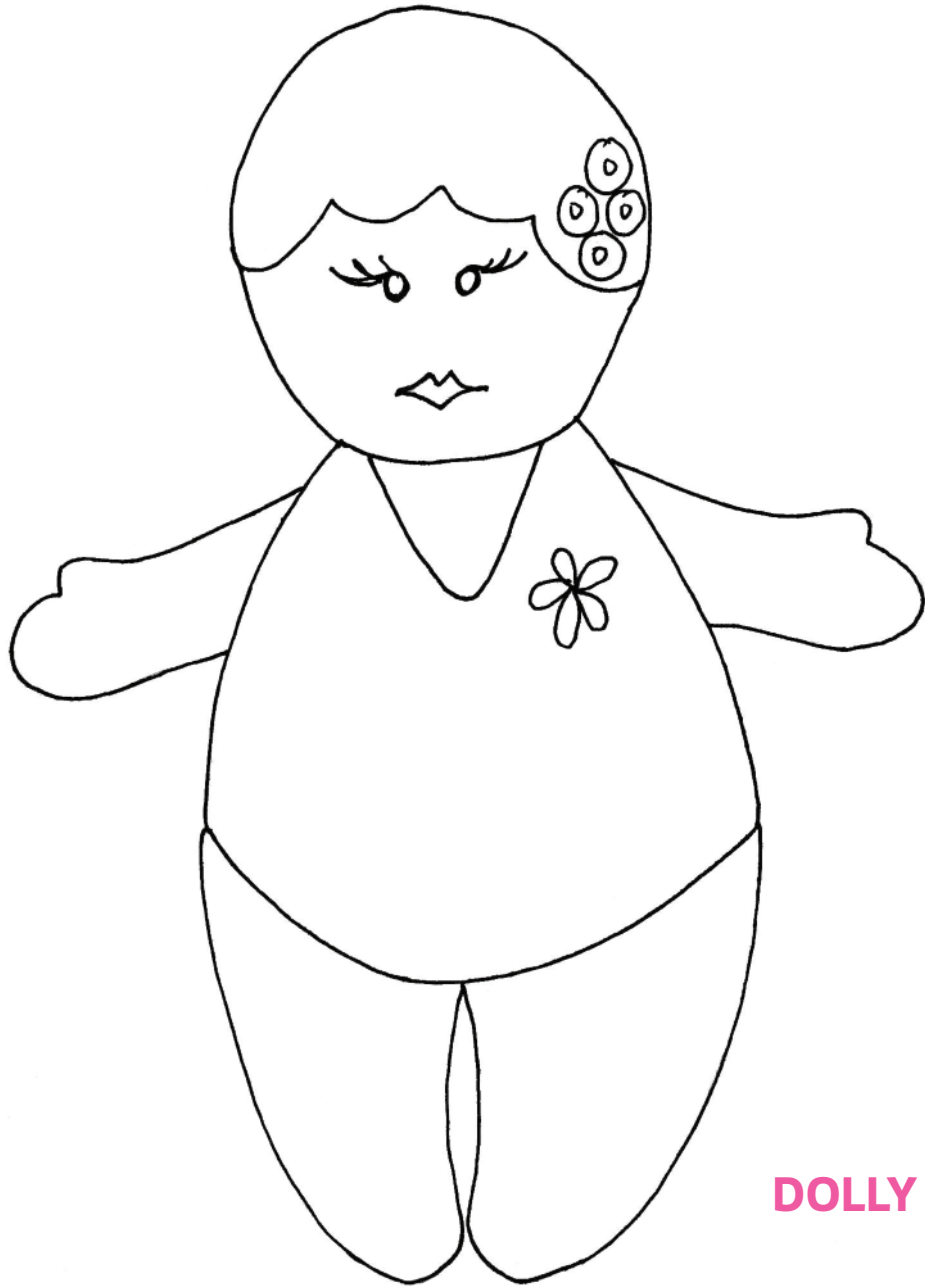
BUNTING



STARFISH

ROOF





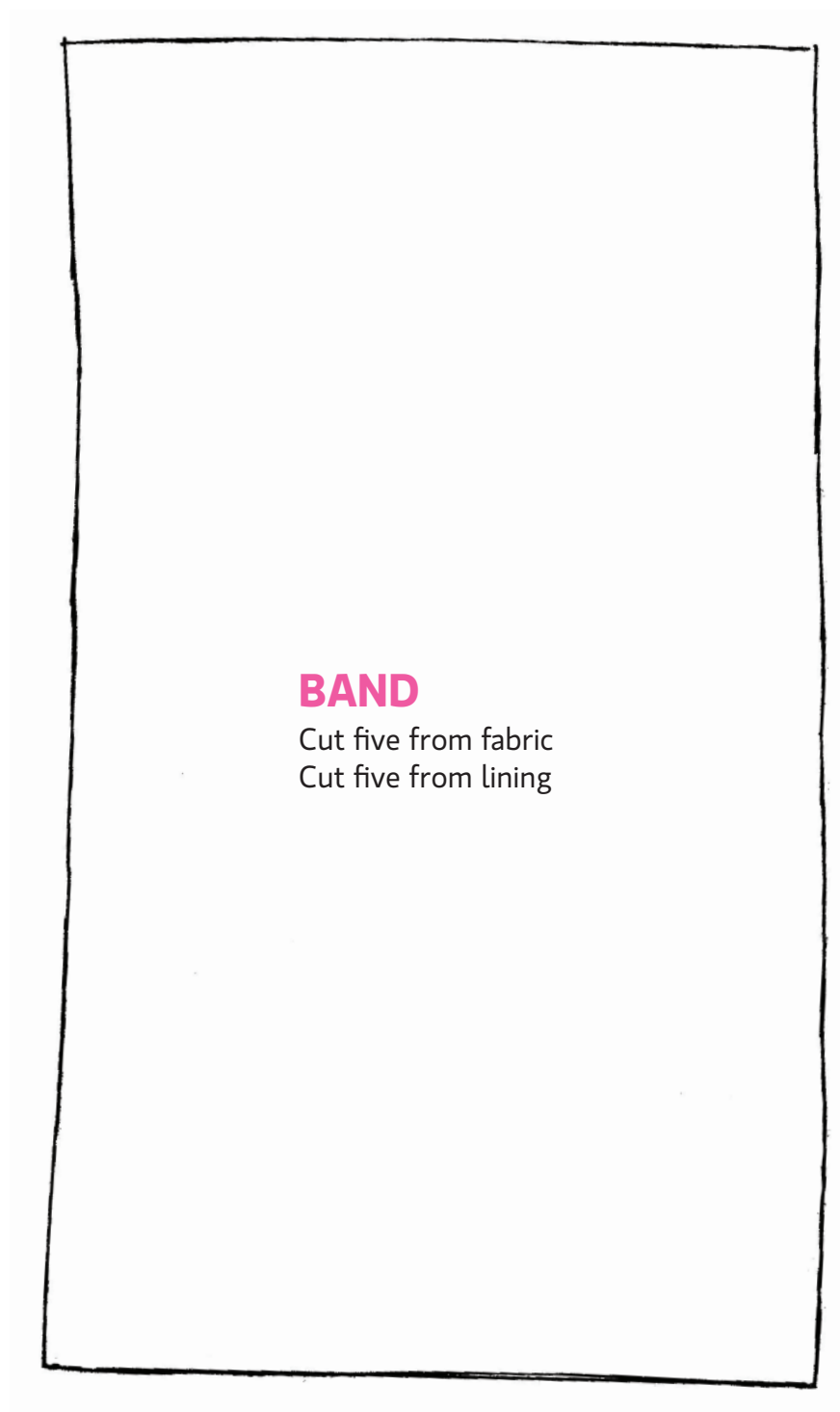
DOLLY

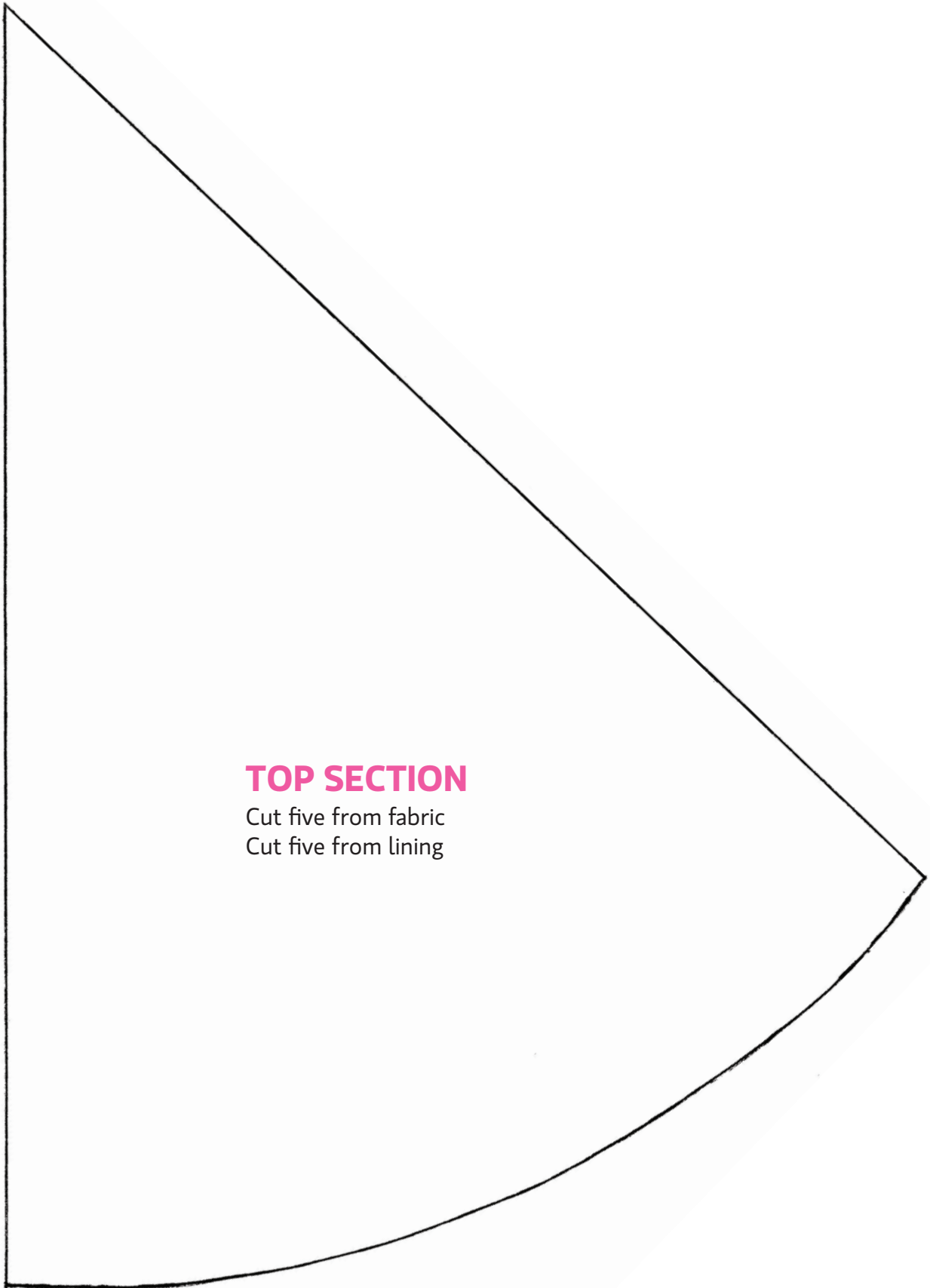
Page 37-38

Title: Forest friends mobile

Designer: Jane Kharade

Magazine page: 85





TOP SECTION

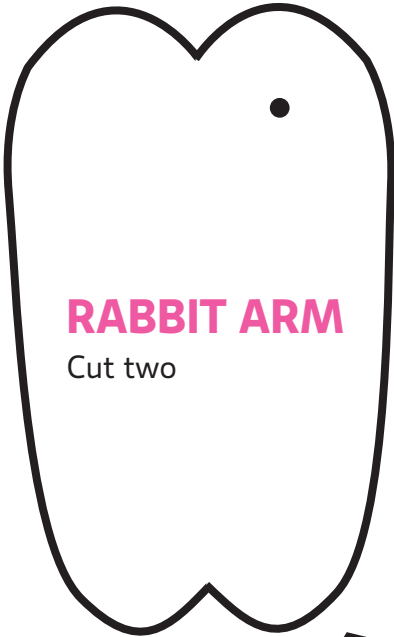
Cut five from fabric

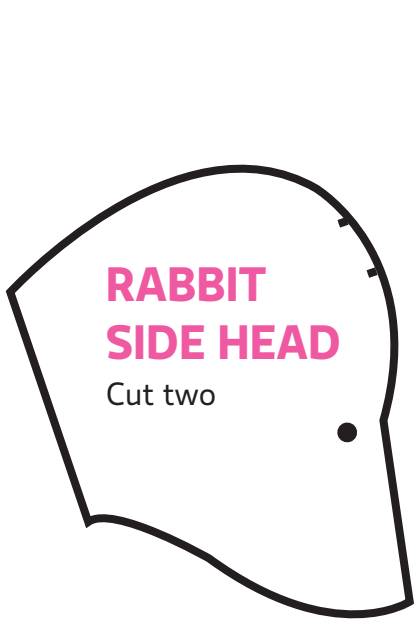
Cut five from lining

Title: Felt bunny

Designer: Sue Quinn

Magazine page: 88





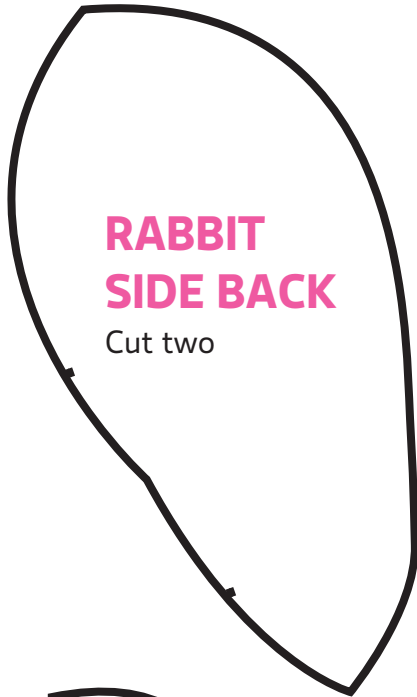
**RABBIT
SIDE HEAD**

Cut two



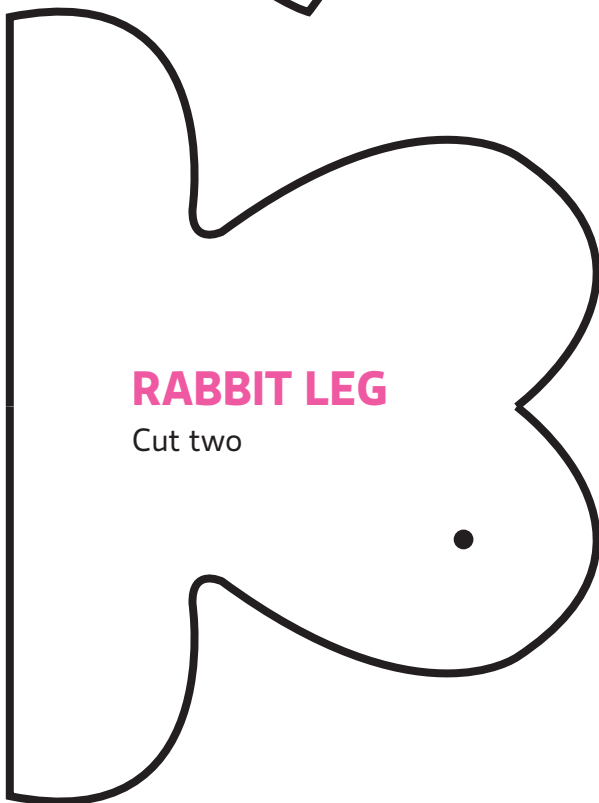
**RABBIT
EAR**

Cut two
from pink
Cut two
from taupe



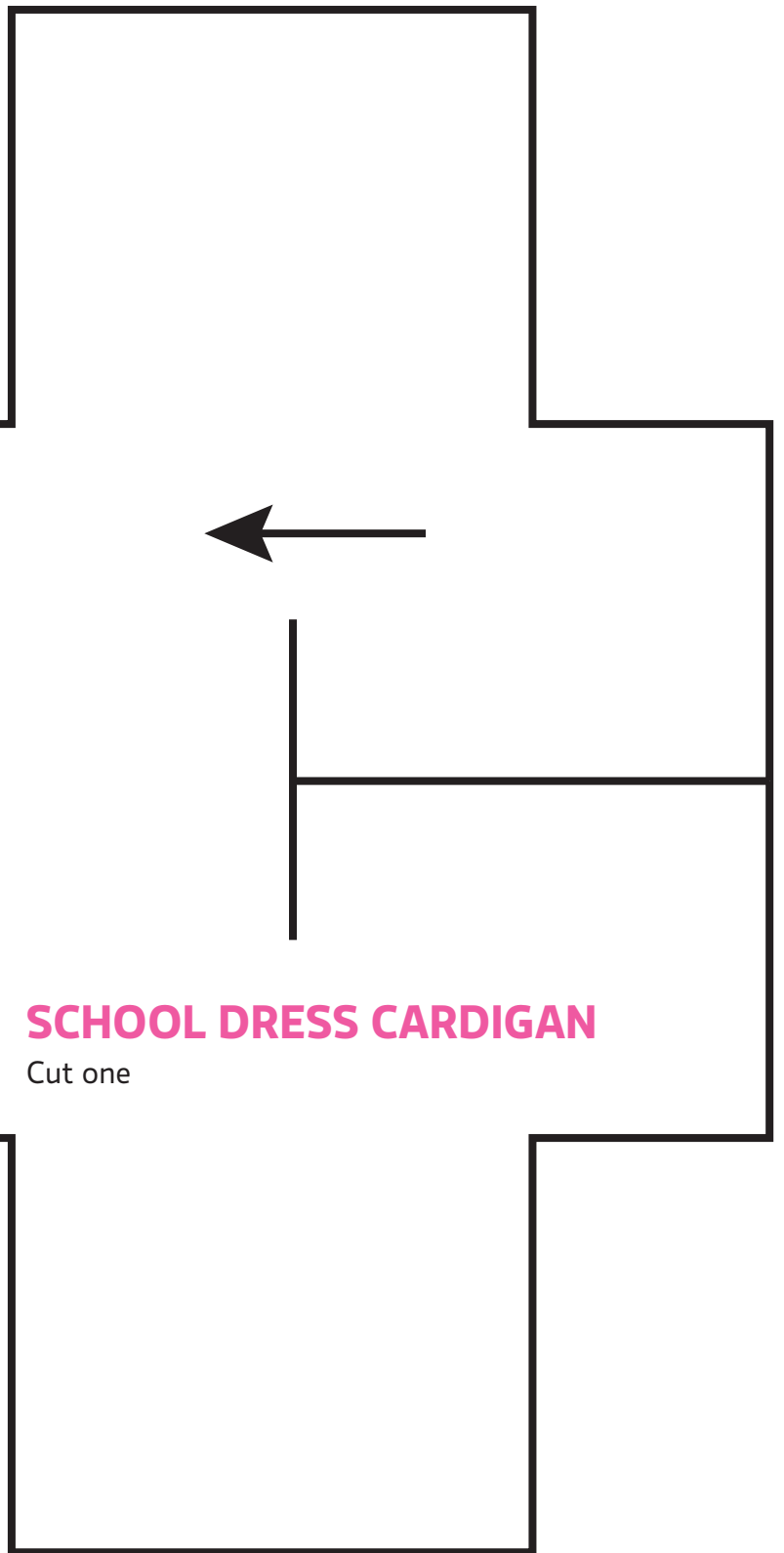
**RABBIT
SIDE BACK**

Cut two



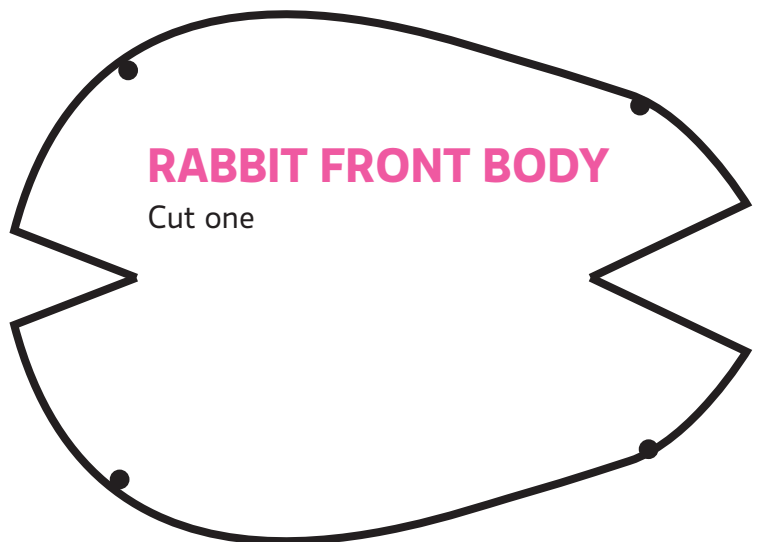
RABBIT LEG

Cut two



SCHOOL DRESS CARDIGAN

Cut one



RABBIT FRONT BODY

Cut one