

Issue 86 July issue 2016

MOTIFS & TEMPLATES

PRINT
OUT
& KEEP

Use these guides to get started today

FIND THE TEMPLATE YOU REQUIRE ON THE CONTENTS LIST BELOW AND JUST PRINT OUT THE PAGE OR PAGES YOU NEED FROM YOUR PRINT MENU

In your print menu, under Size options, be sure to select to print 'Actual Size', instead of 'Fit to Page'

Page 2-7

Title: Josie dress

Designer: Jennifer Paganelli

Magazine page: 18

Page 8-24

Title: Flora top

Designer: Amanda Walker

Magazine page: 24

Page 25-37

Title: Barkcloth skirt

Designer: Amanda Walker

Magazine page: 38

Title: Josie dress

Designer: Jennifer Paganelli

Magazine page: 18

SIZE AND AGE	X-SMALL 2-3	SMALL 4-5	MEDIUM 6-7	LARGE 8-10	X-LARGE 12-14
HEIGHT	84cm-99cm	99cm-114cm	114cm-130cm	130cm-145cm	145cm-157cm
CHEST	51cm-56cm	57cm-62cm	63.5cm-67cm	68.5cm-73.5cm	73.5cm-81cm
WAIST	51cm-53cm	53cm-56cm	52cm-58.5cm	54.5cm-61cm	60cm-66cm
HIP	53cm-58cm	60cm-65cm	66cm-70cm	71cm-76cm	79cm-84cm
HEAD CIRCUMFERENCE	49.5cm-51cm	51cm-52cm	52cm-53cm	53cm-54.5cm	54.5cm-56cm
WEIGHT	13.5kg-16.5kg	16.5kg-21kg	20kg-25kg	24.5kg-33.5kg	34kg-43kg

ESSENTIALS

Printed mid-weight cotton fabric, 114cm wide by:

SIZE	XS	S	M	L	XL
Bodice, bodice lining and straps	45cm	45cm	70cm	70cm	70cm
Skirt	1m	1.2m	1.3m	1.5m	1.6m
Waist tie	35cm	35cm	35cm	35cm	35cm

- Coordinating lining, 114cm wide
- Polyester coil zip, 30.5cm
- Coordinating thread

NOTE: The skirt length measurements are generous; adjust as needed, depending on where you want the hem to fall.

CUTTING GUIDE FROM SKIRT FABRIC FOR THE BACK SKIRT:

SIZE	XS	S	M	L	XL
Cut two rectangles (L x W)	46cm x 39cm	53cm x 42.5cm	61cm x 46cm	68cm x 49cm	75cm x 53cm

FOR THE FRONT SKIRT:

SIZE	XS	S	M	L	XL
Cut one rectangle (L x W)	46cm x 76cm	53cm x 82.5cm	61cm x 89cm	68cm x 95cm	75cm x 1.04m

FROM BODICE FABRIC:

- Fold fabric in half, lining up selvedge edges. Cut one bodice front piece, on the fold. After cutting out the bodice front piece, clip a 6mm notch at the top and lower edge of the fold and at the indicated notches for the gathering.
- Cut one bodice lining piece, on the fold. Clip a 6mm notch at the upper and lower edges of the fold.
- Cut four bodice back pieces. You want two mirror image sets, one for the outside of the dress and one for the lining.
- Clip a 6mm notch at the bodice back upper edge, where indicated on the pattern.

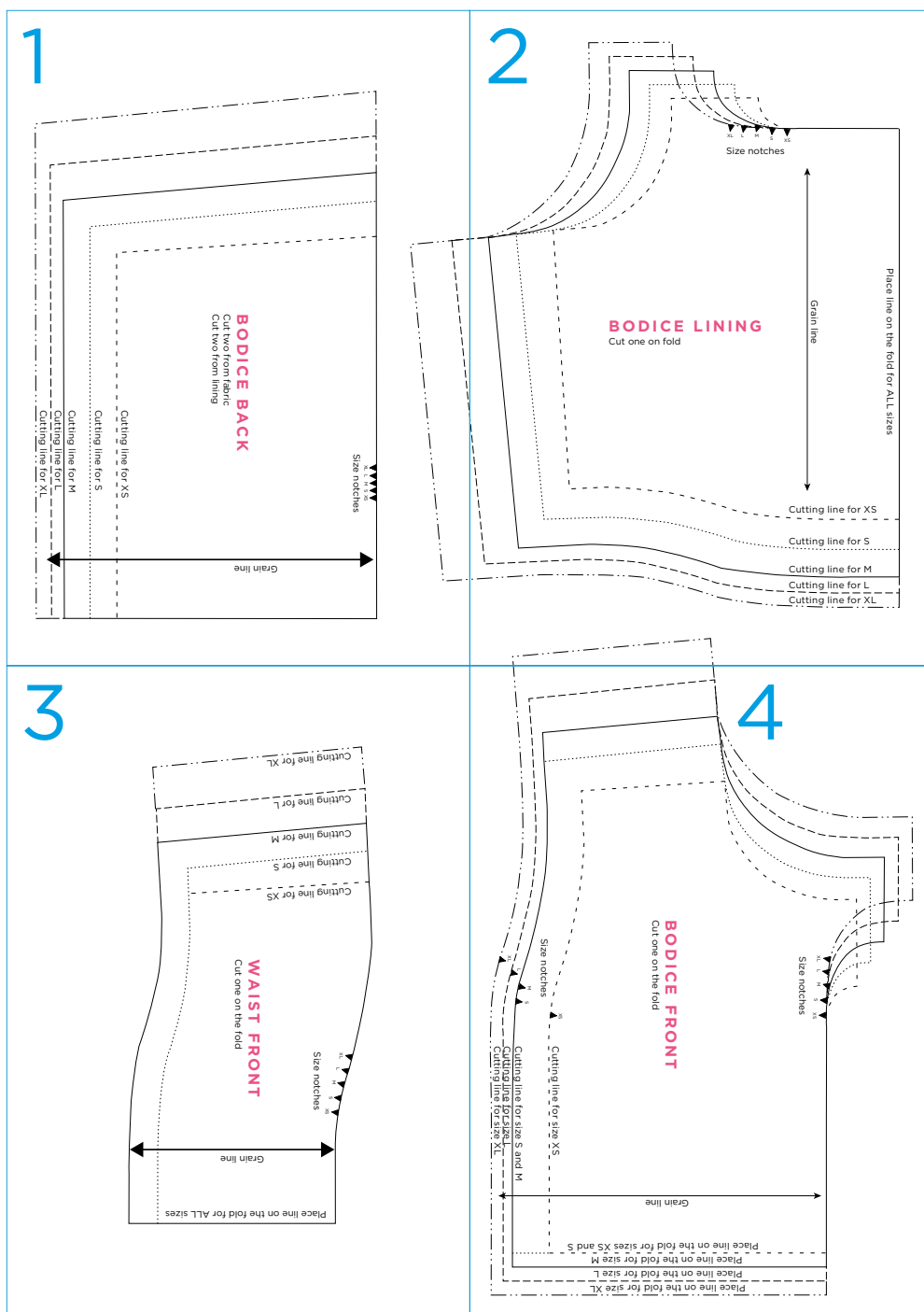
FOR THE STRAPS:

SIZE	XS	S	M	L	XL
Cut two rectangles (L x W)	21cm x 5cm	23cm x 5cm	25cm x 5cm	26.5cm x 5cm	28.5cm x 5cm

FOR THE WAIST TIES:

SIZE	XS	S	M	L	XL
Cut two rectangles (L x W)	11cm x 68.5cm	11cm x 74cm	12cm x 79cm	13cm x 84cm	13cm x 89cm

Cut one waist front piece on the fold. After cutting out the waist front piece, clip a 6mm notch at the upper and lower edges of the fold, and at the notches indicating gathering placement.





Size notches
XL L M S XS

Grain line

BODICE BACK

Cut two from fabric
Cut two from lining

Cutting line for XS

Cutting line for S

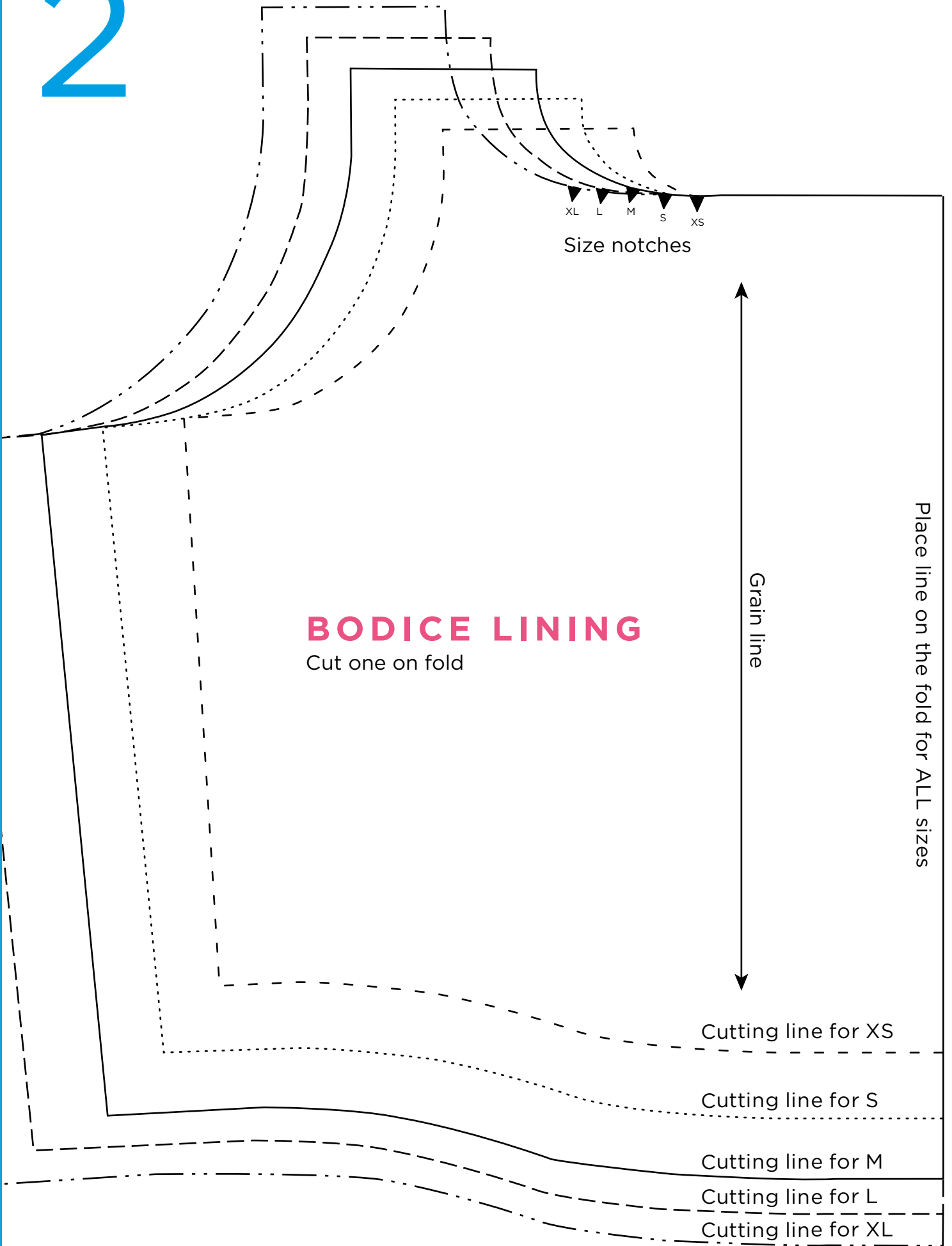
Cutting line for M

Cutting line for L

Cutting line for XL



2



XL L M S XS
Size notches

Grain line

Place line on the fold for ALL sizes

BODICE LINING
Cut one on fold

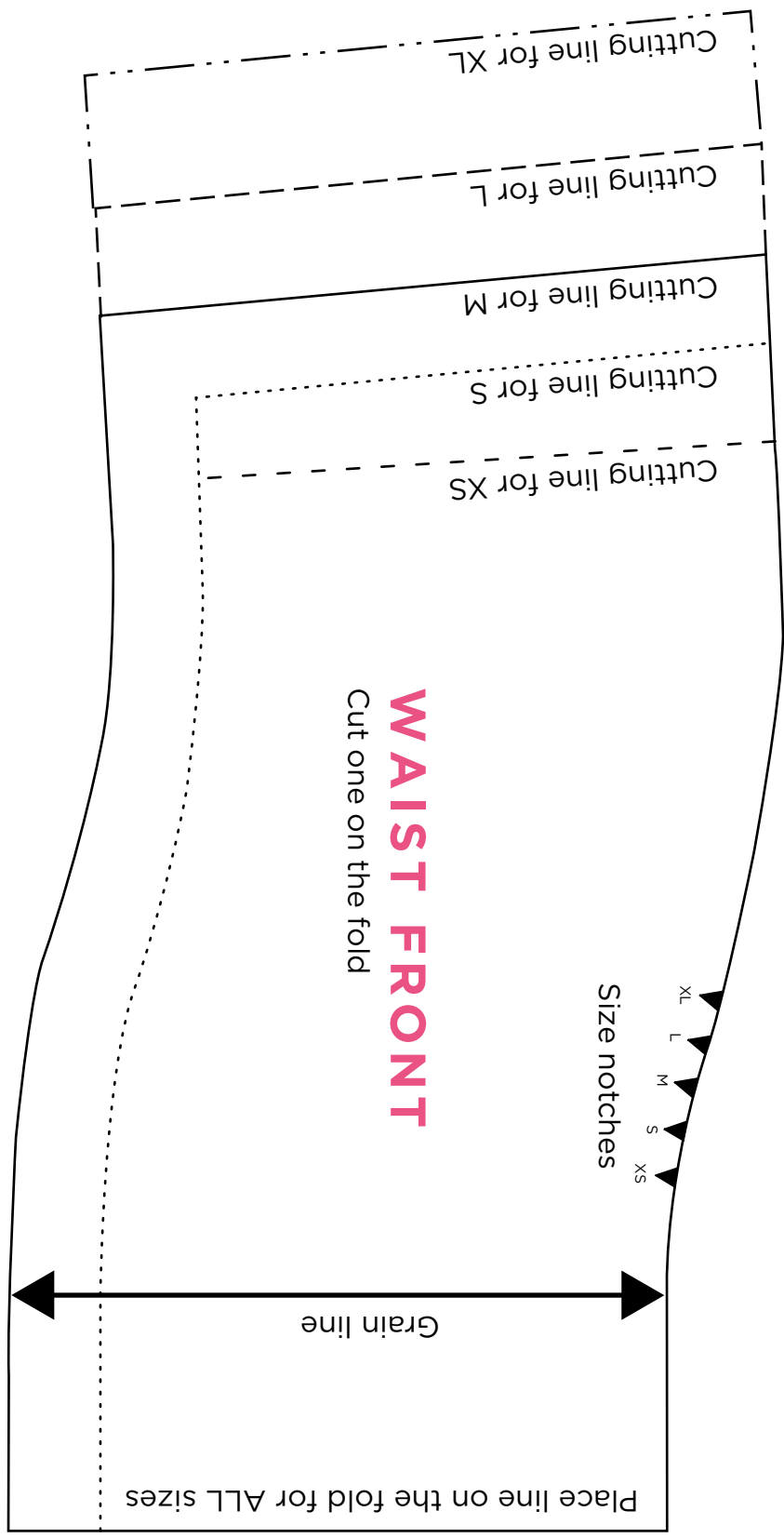
Cutting line for XS

Cutting line for S

Cutting line for M

Cutting line for L

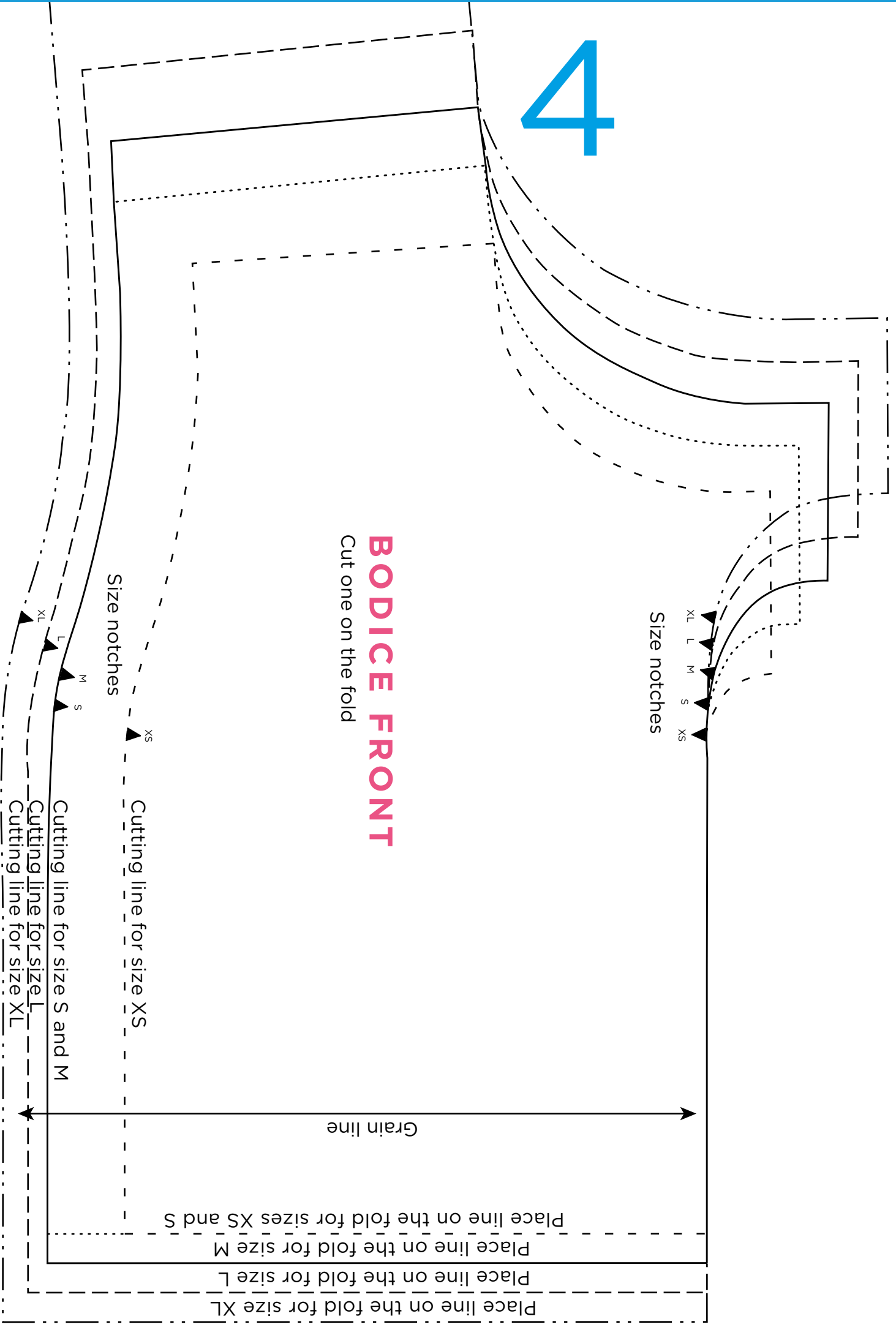
Cutting line for XL



4

BODICE FRONT

Cut one on the fold



Size notches

XL L M S XS

Size notches

XL L M S XS

Cutting line for size XS

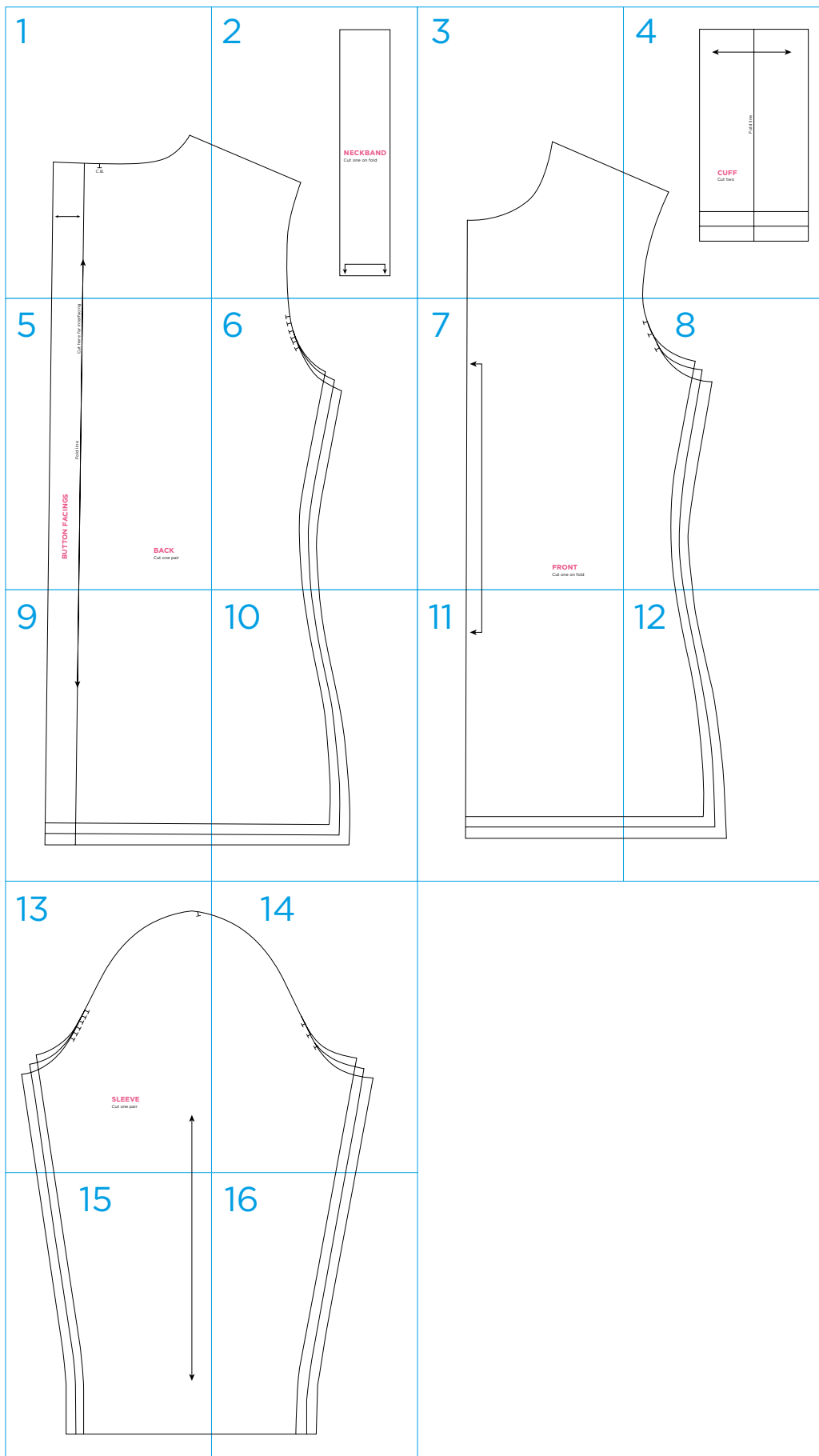
Cutting line for size S and M

Cutting line for size L

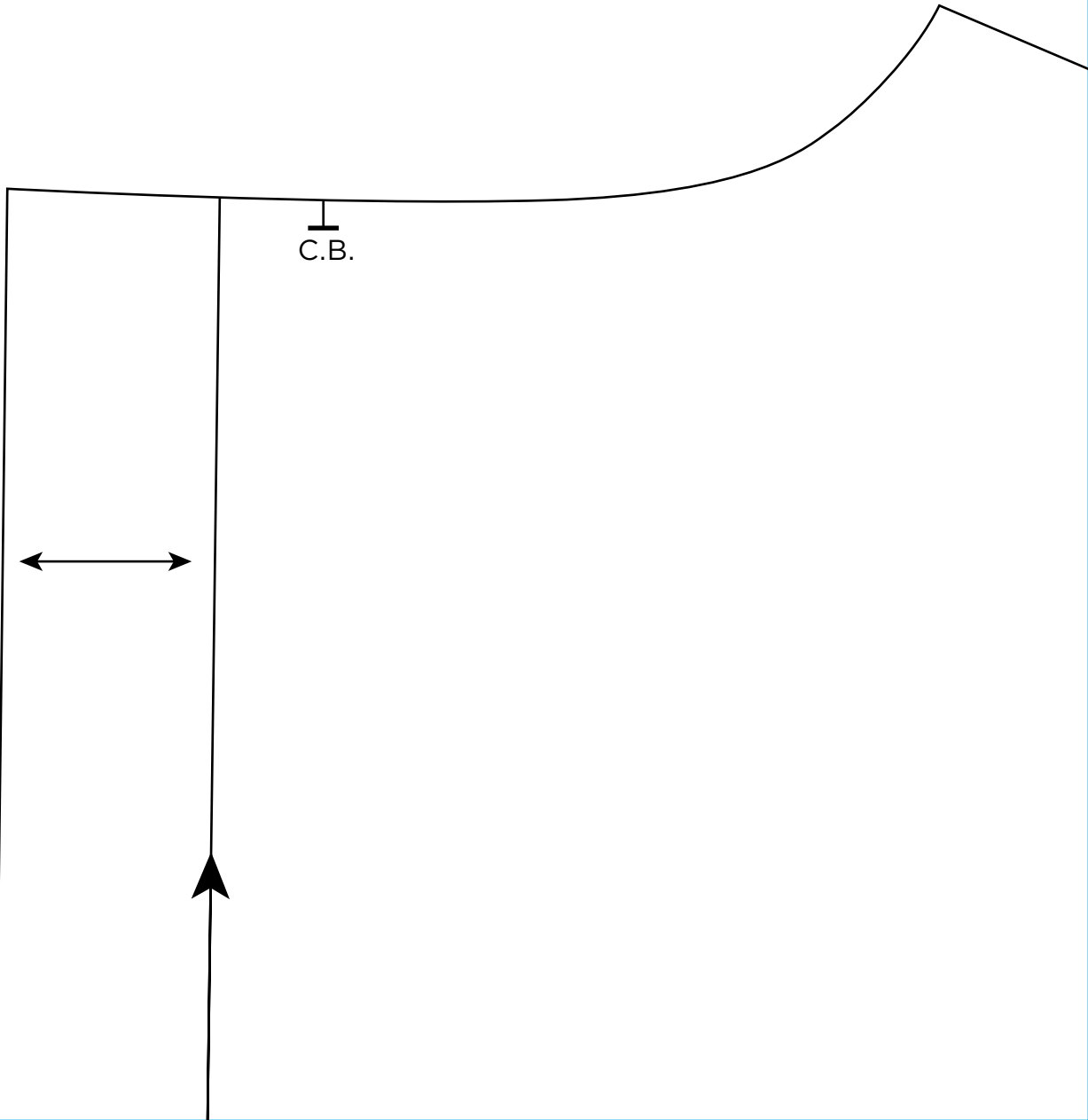
Cutting line for size XL

Grain line

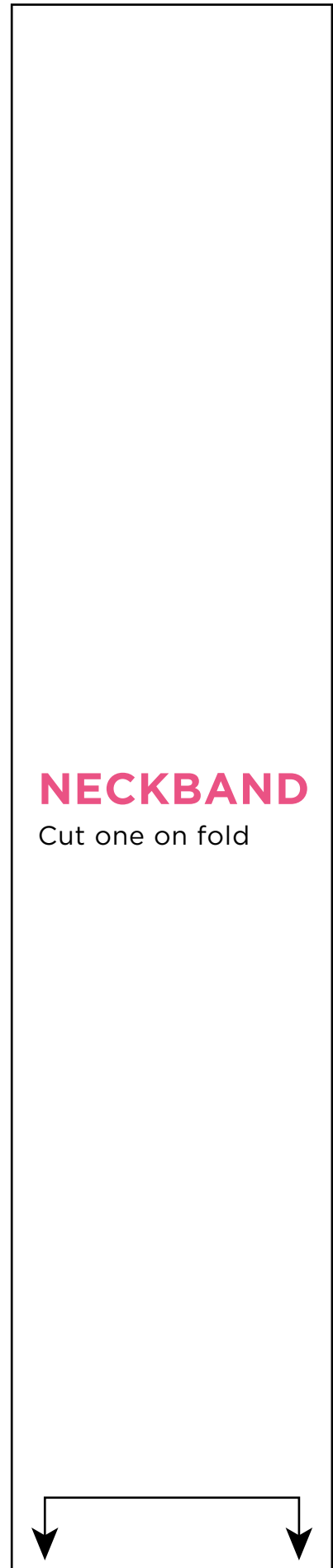
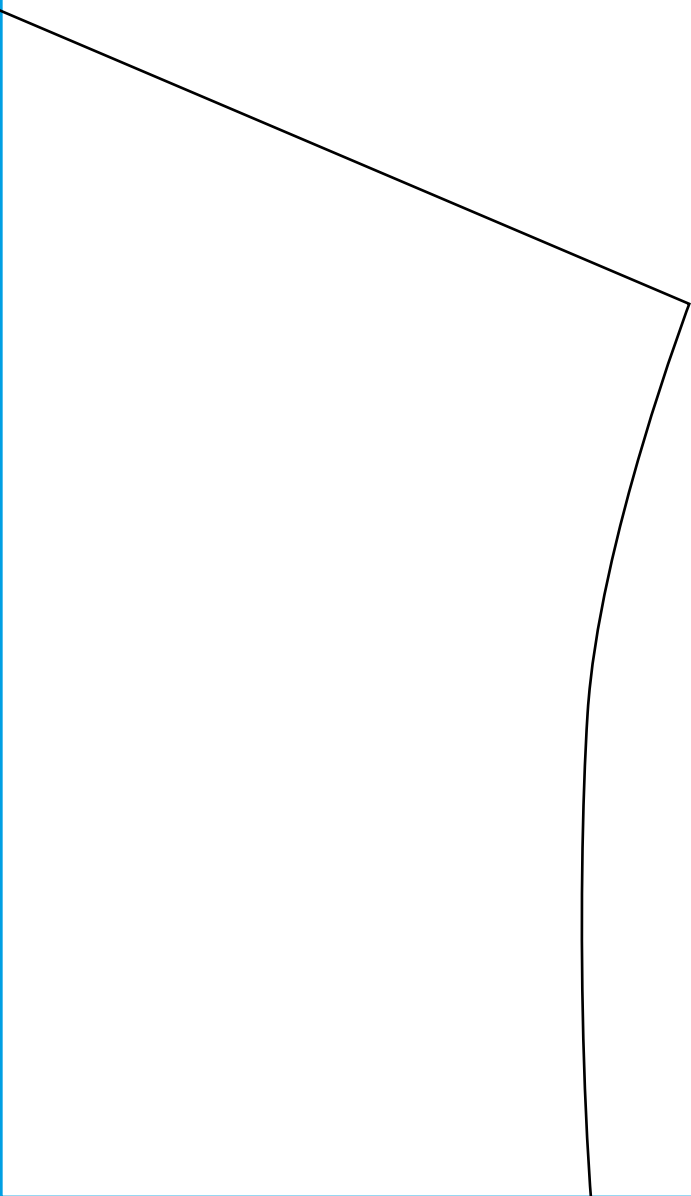
Place line on the fold for size XL
Place line on the fold for size L
Place line on the fold for size M
Place line on the fold for sizes XS and S



1



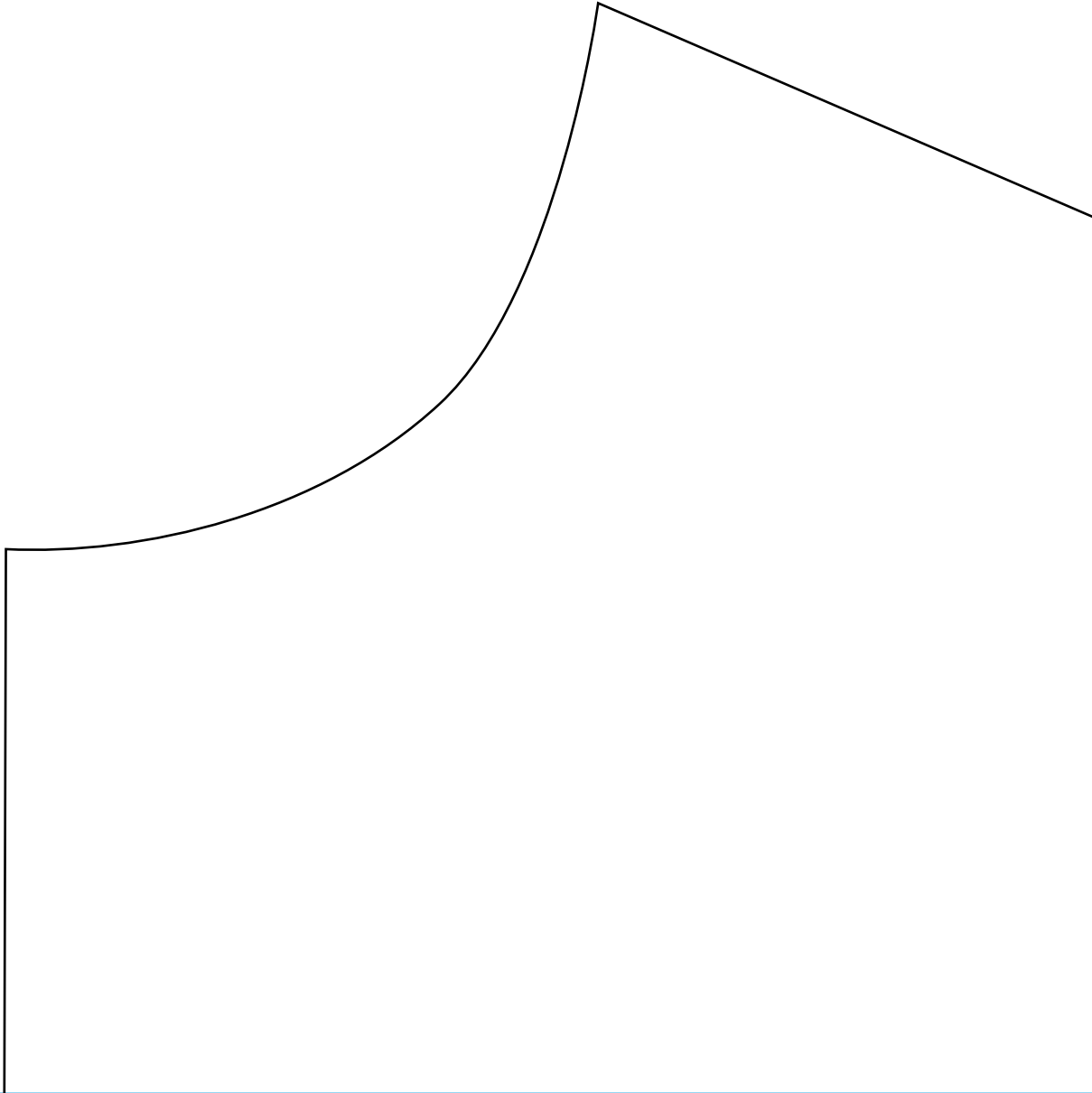
2



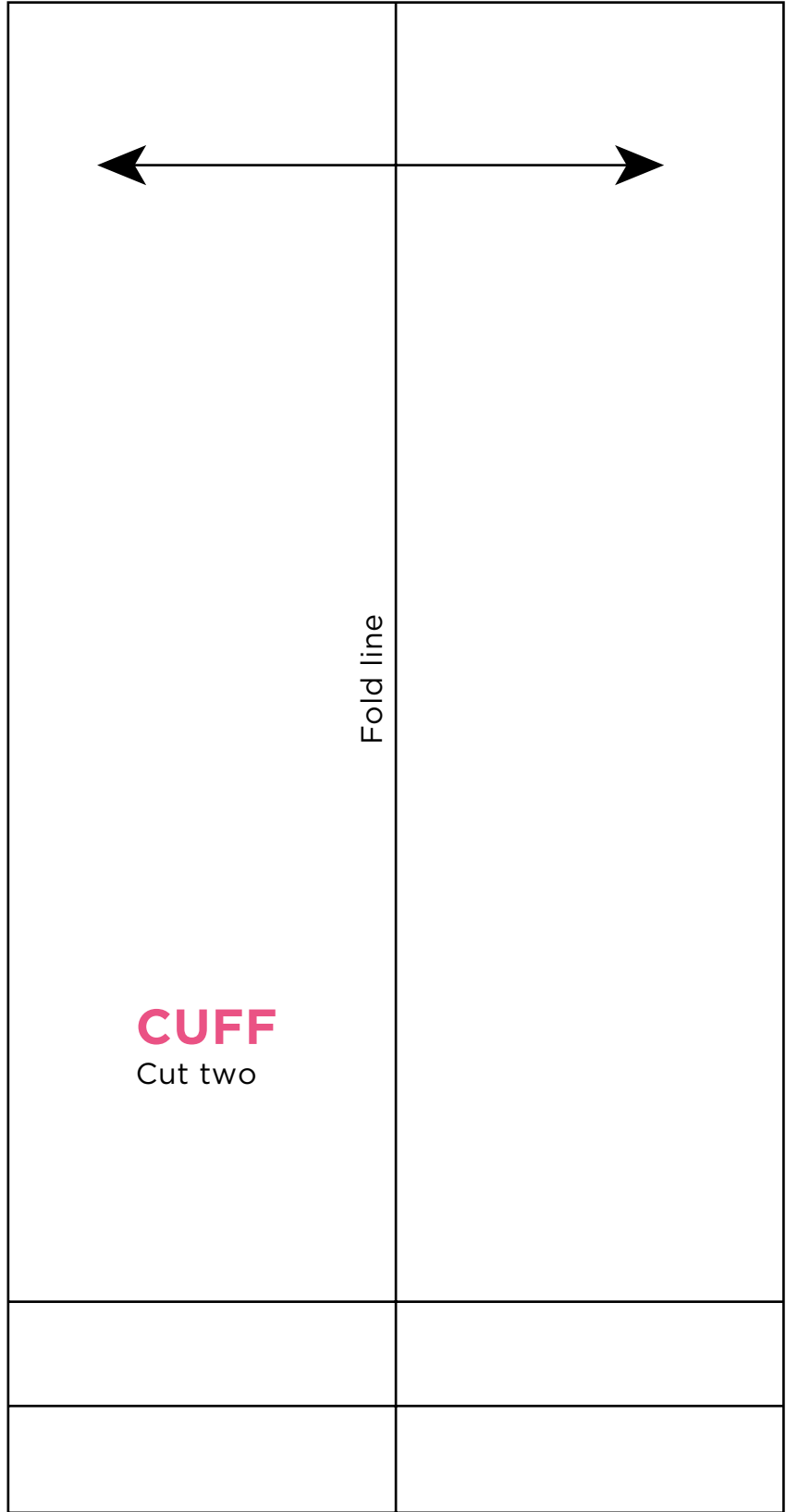
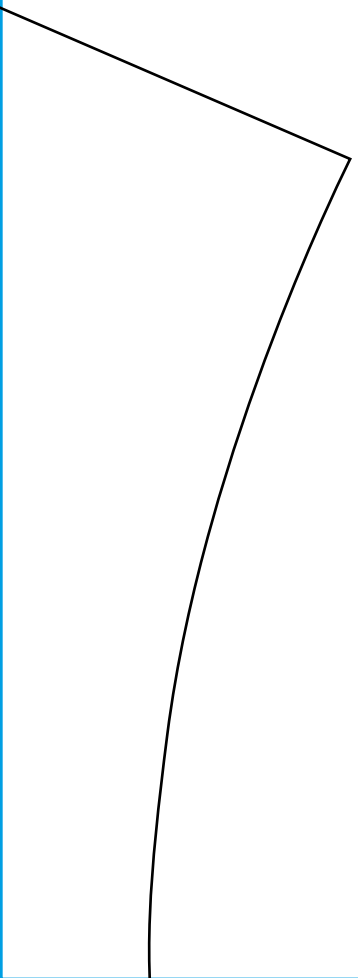
NECKBAND

Cut one on fold

3



4



5

BUTTON FACINGS

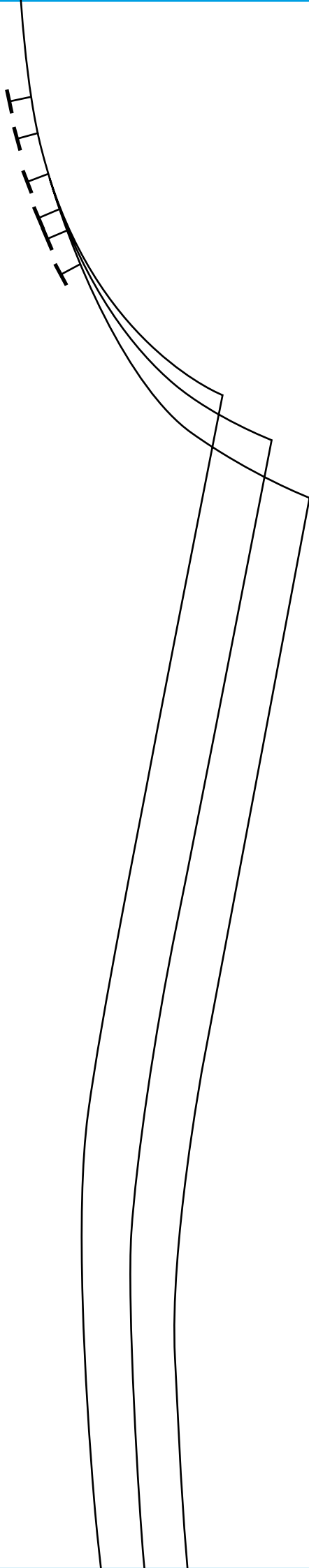
Fold line

Cut here for interfacing

BACK

Cut one pair

6



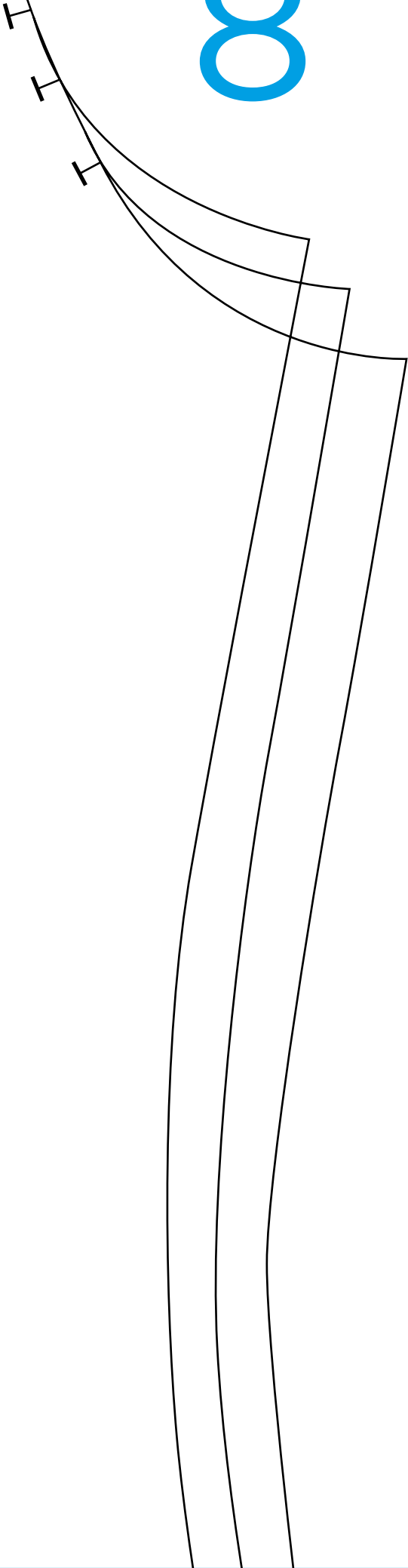
7



FRONT

Cut one on fold

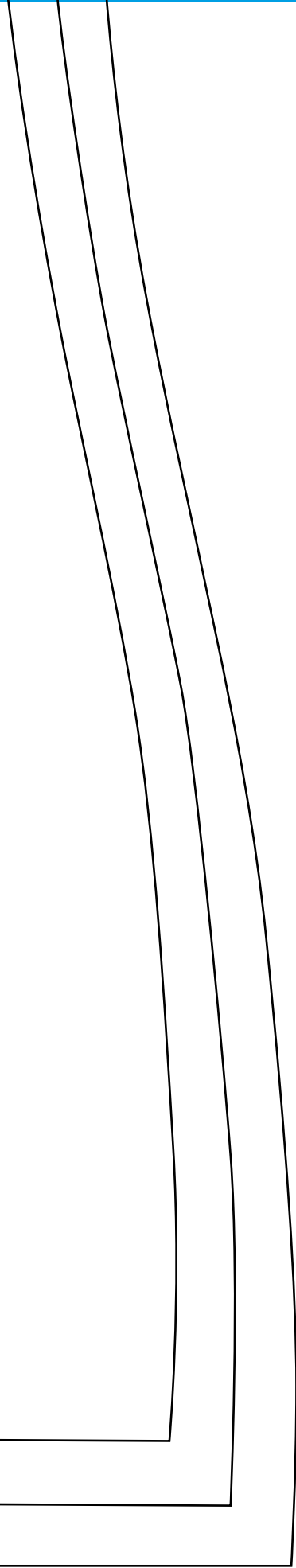
8



9



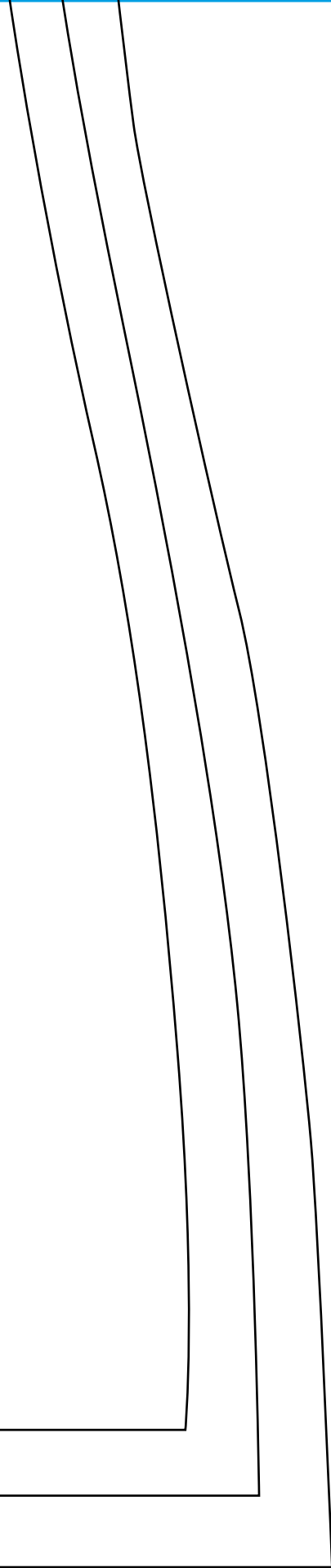
10



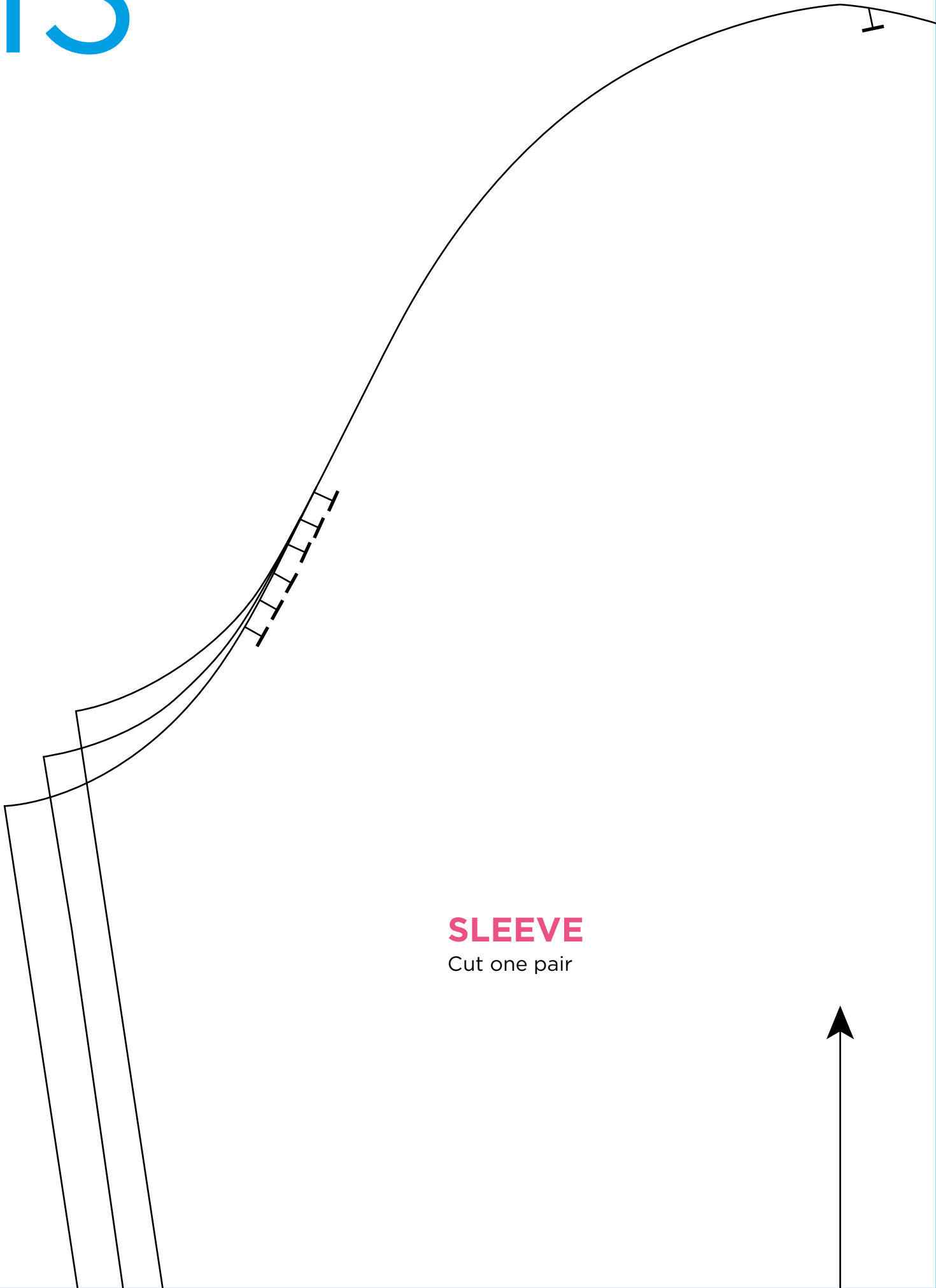
11



12

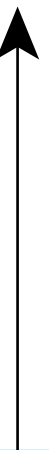


13

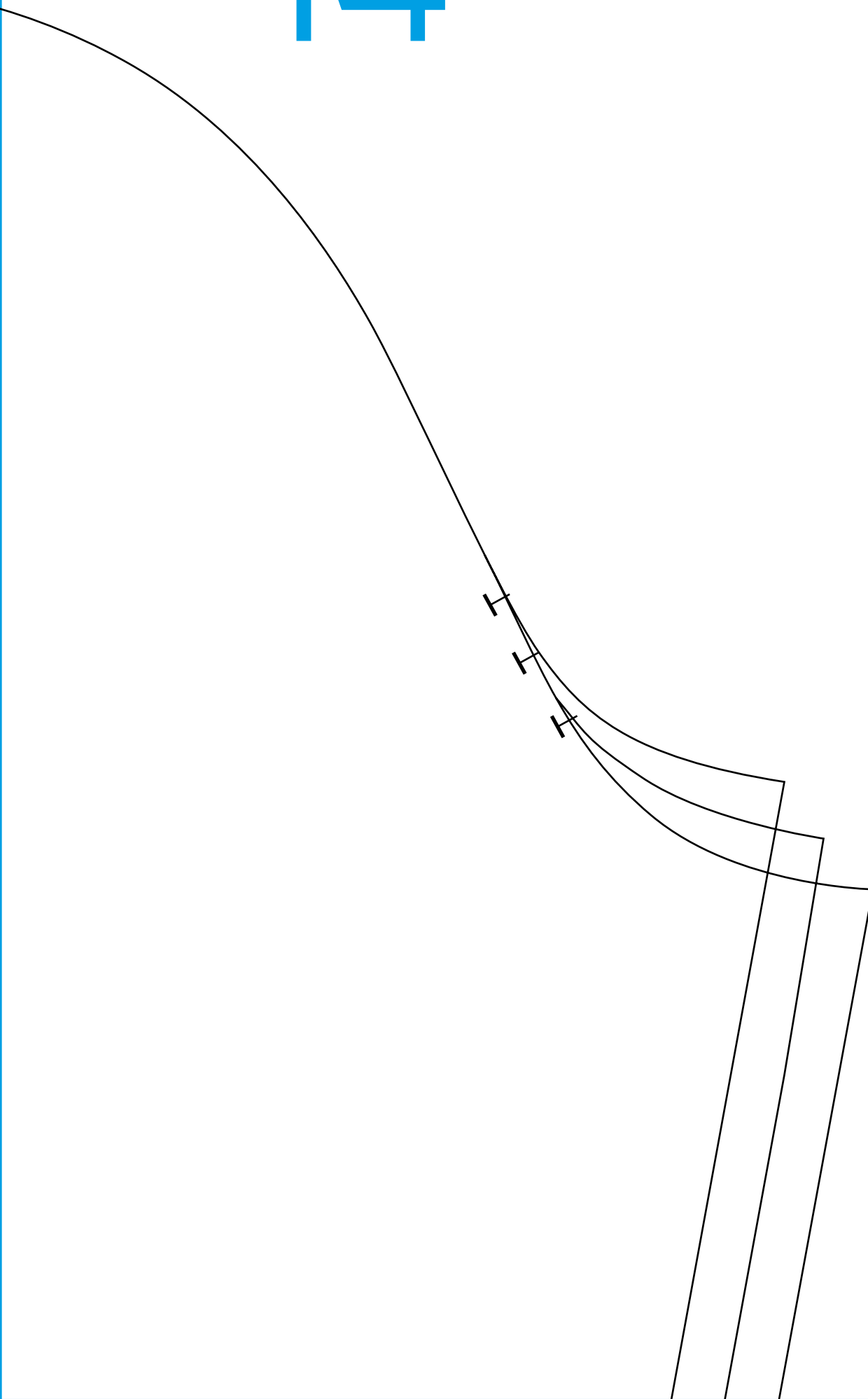


SLEEVE

Cut one pair



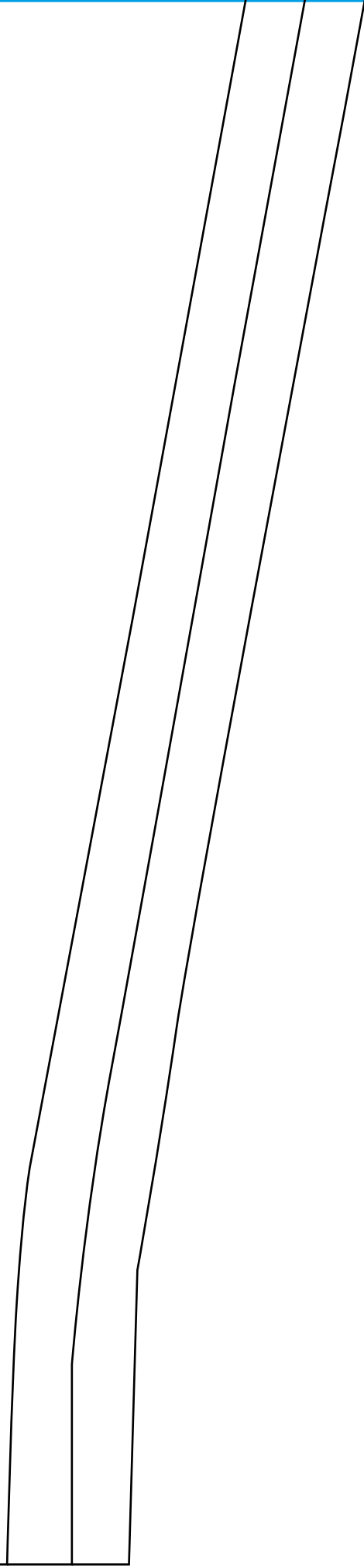
14

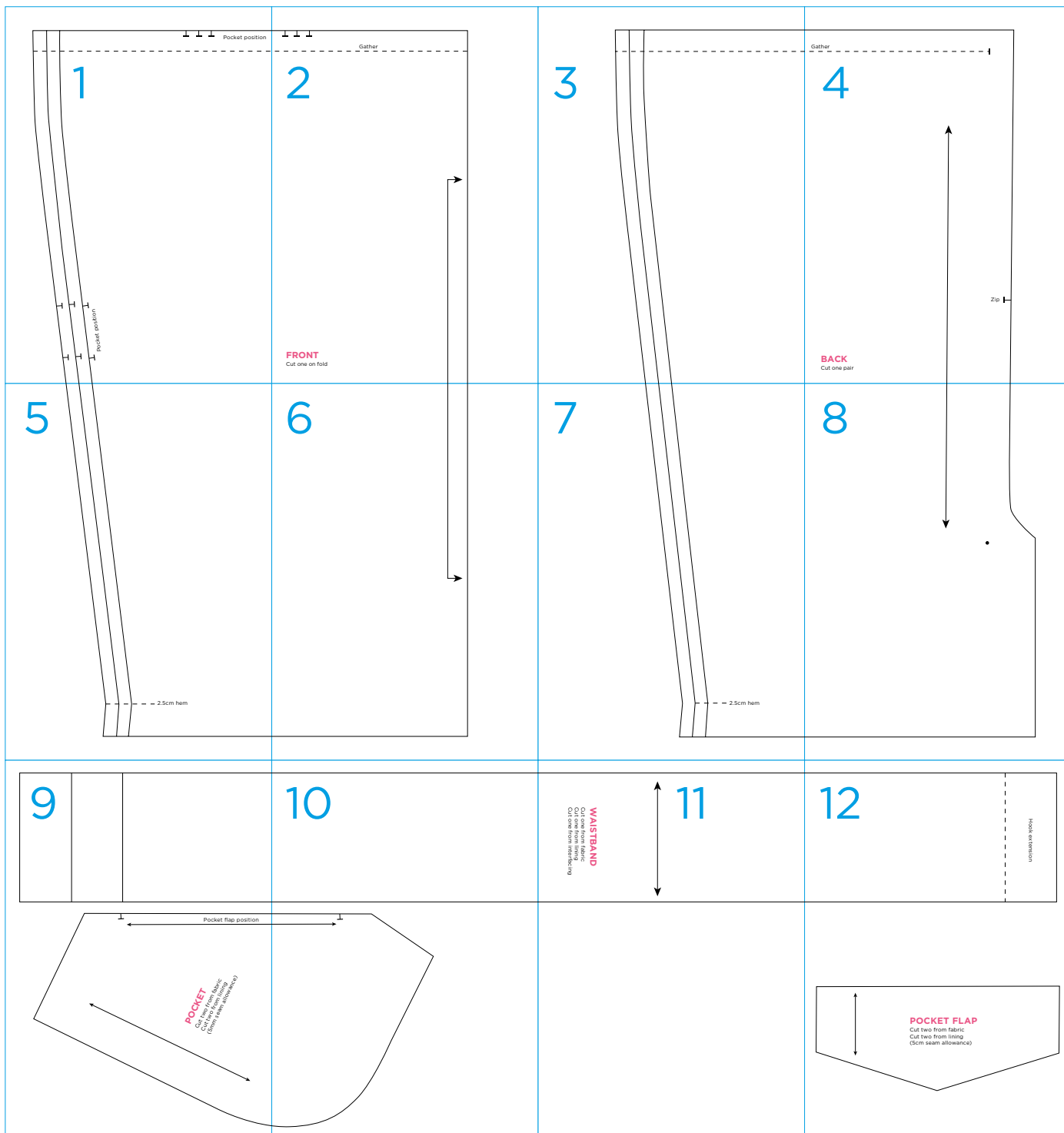


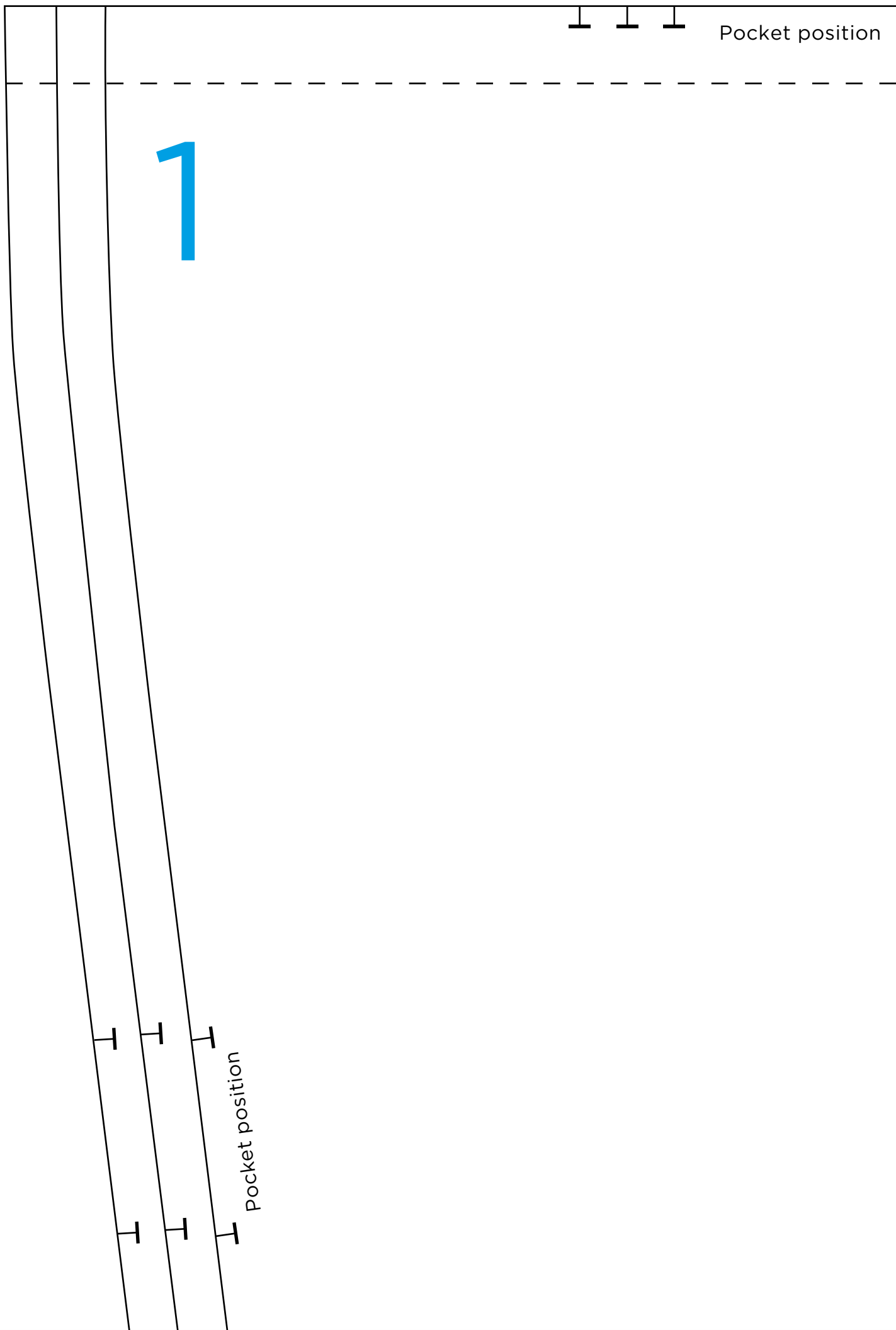
15



16







1

Pocket position

Pocket position

Gather

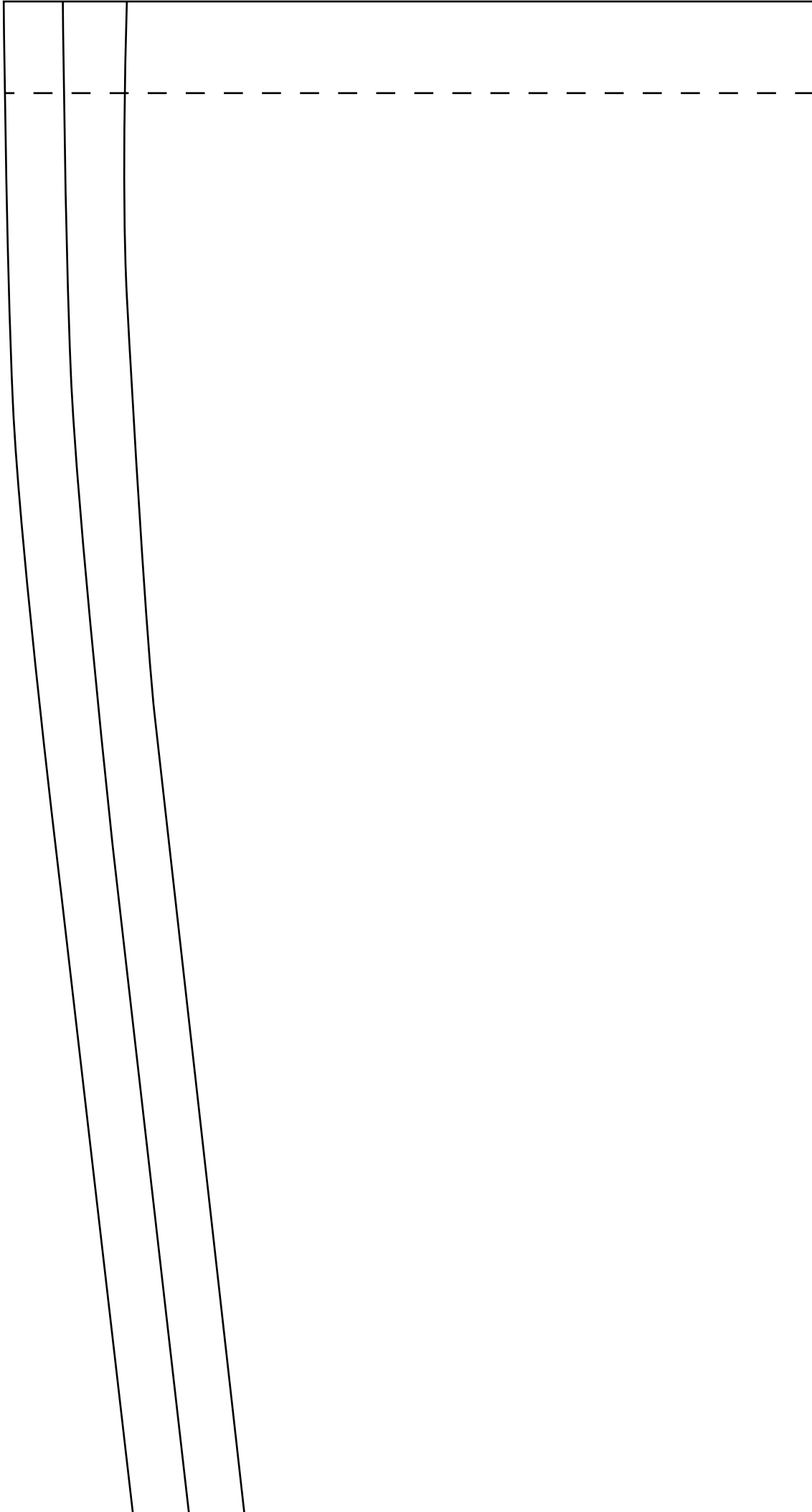
2



FRONT

Cut one on fold

3



Gather

4

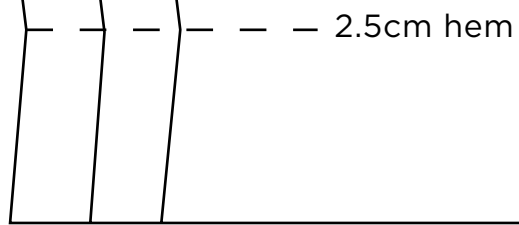


Zip

BACK

Cut one pair

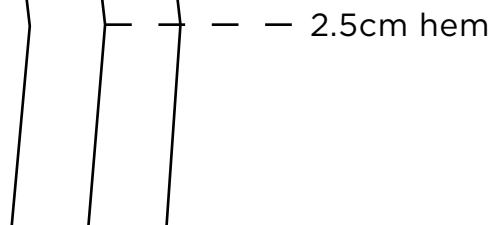
5



6



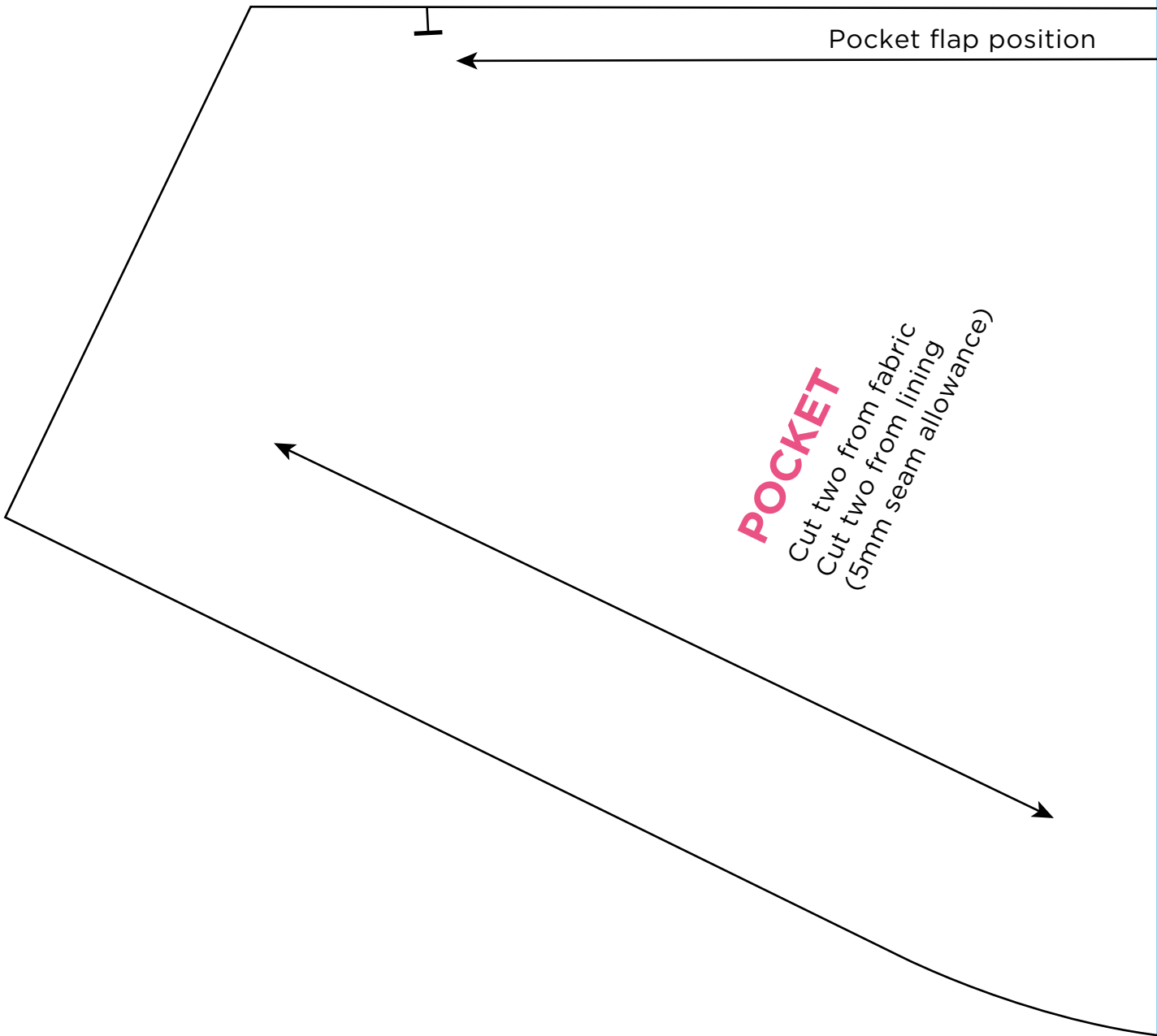
7



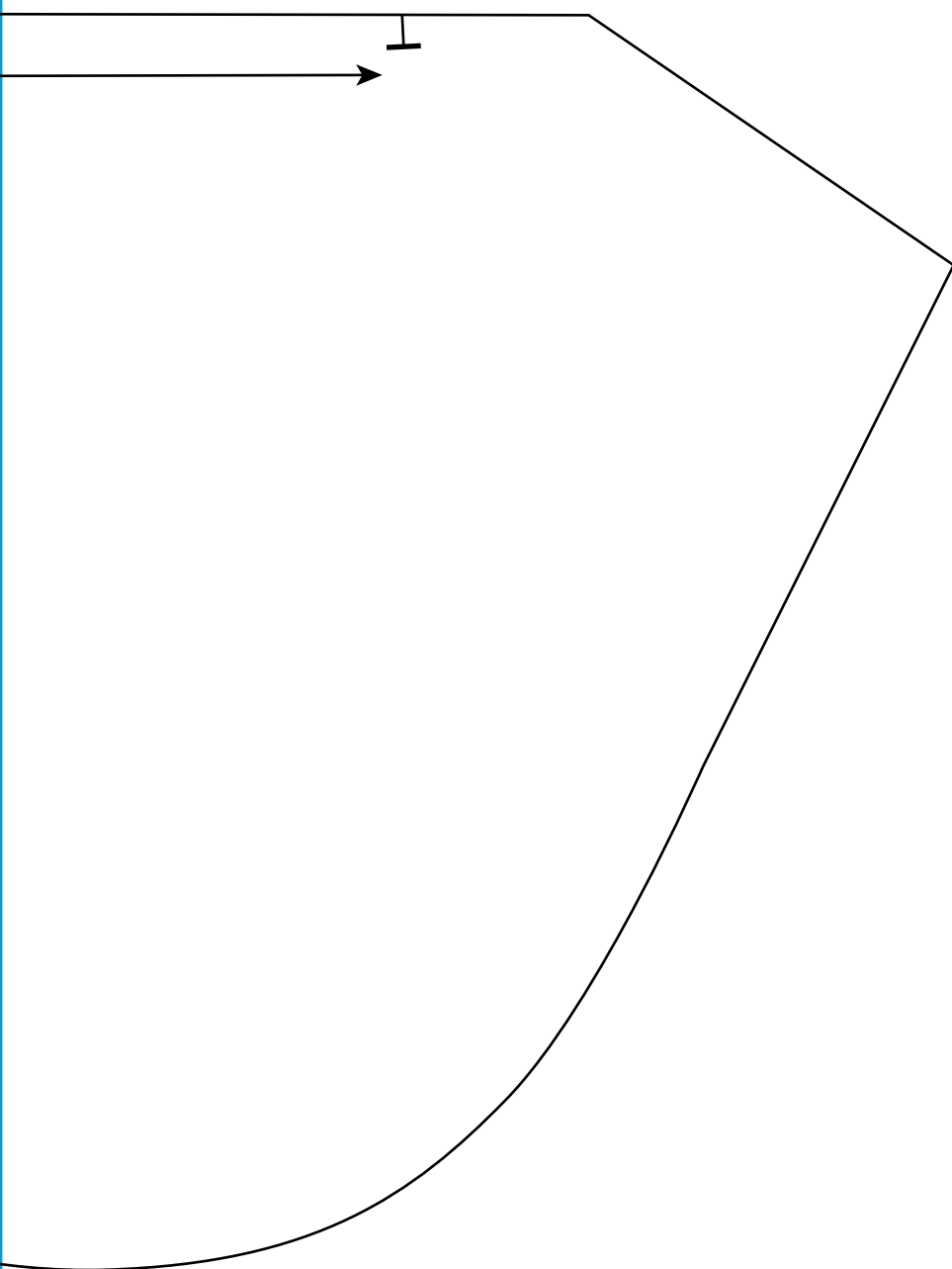
8



9



10



11



WAISTBAND

- Cut one from fabric
- Cut one from lining
- Cut one from interfacing

12

Hook extension

POCKET FLAP

Cut two from fabric
Cut two from lining
(5cm seam allowance)

