

10 x 10 cm



Für Körpergröße/ for height/ pour la taille 168 cm:

Größe/ Size/ Taille	34	36	38	40	42	44	46
Oberweite/ Bust/Poitrine		80	84	88	92	96	100
Taillenweite/ Waist/Taille		64	67	71	75	79	83
Hüftweite/ Hip/Hanche		90	93	96	99	102	105
Vord. Taillengl./ Front waist length/ Longueur taille devant		42	43	44	45	46	47
Rückw. Taillengl./ Back waist length/		41	41	41	42	42	42

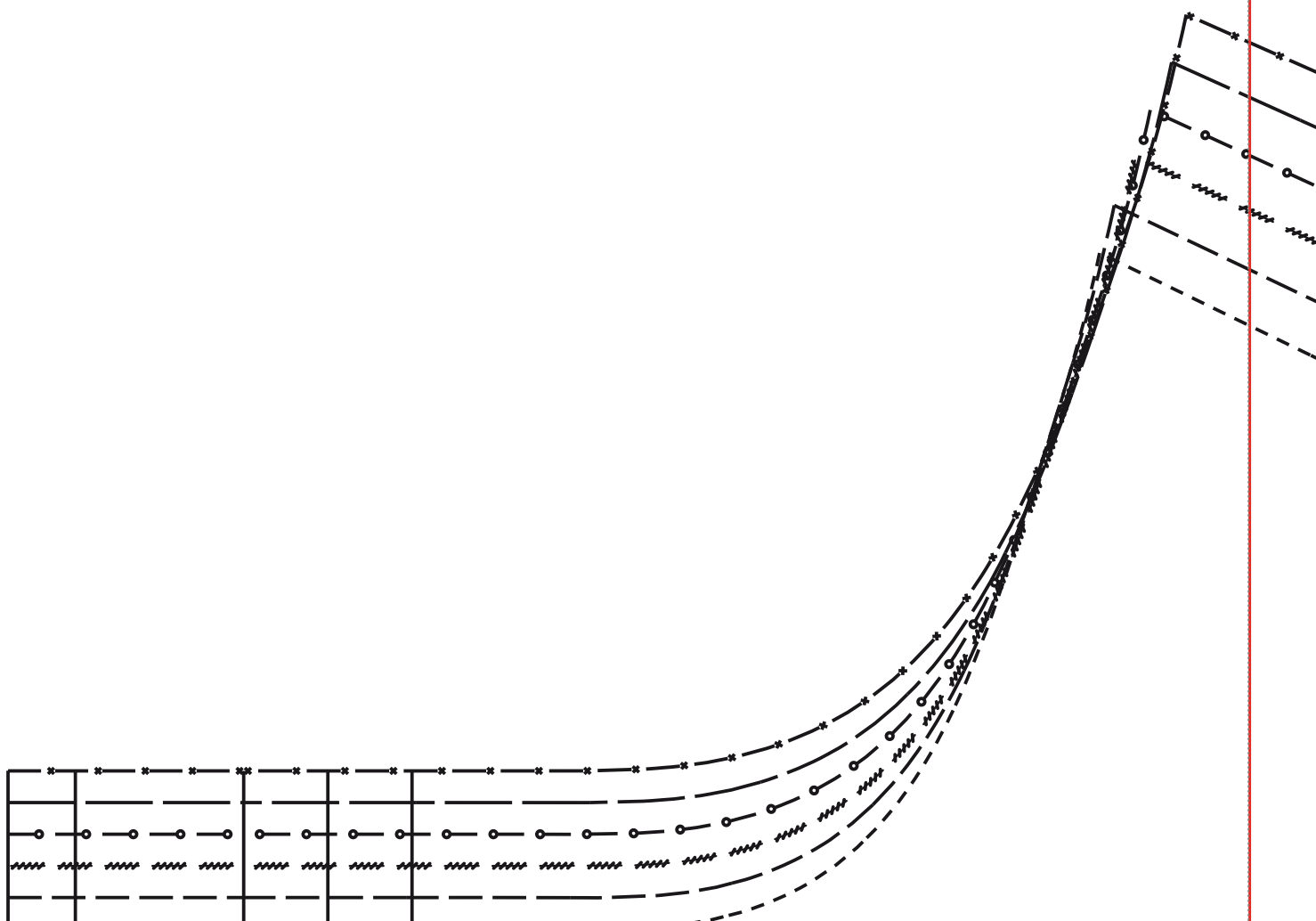
Für Körpergröße/ for height/ pour la taille 66 Inch:

Größe/ Size/ Taille	34	36	38	40	42	44	46
Oberweite/ Bust/Poitrine		31,5	33	34,6	36,2	37,8	39,4
Taillenweite/ Waist/Taille		25,2	26,4	28	29,5	31,1	32,7
Hüftweite/ Hip/Hanche		35,4	36,6	37,8	39	40,2	41,3
Vord. Taillengl./ Front waist length/ Longueur taille devant		16,5	17	17,3	17,7	18	18,5
Rückw. Taillengl./ Back waist length/		16	16	16	16,5	16,5	16,5

Legende/Legend/ Légend

Größe/	-----	34
Size/	-----	36
Taille	////	38
	—○—○—○—○—	40
	-----	42
	—*—*—*—*	44
	=====	46

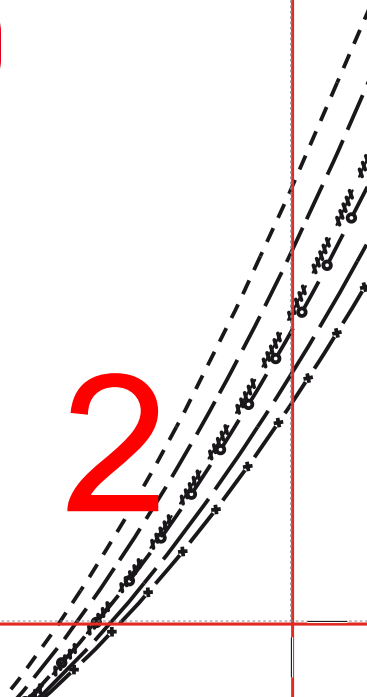
1



3 Vordere Passe/ Front yo

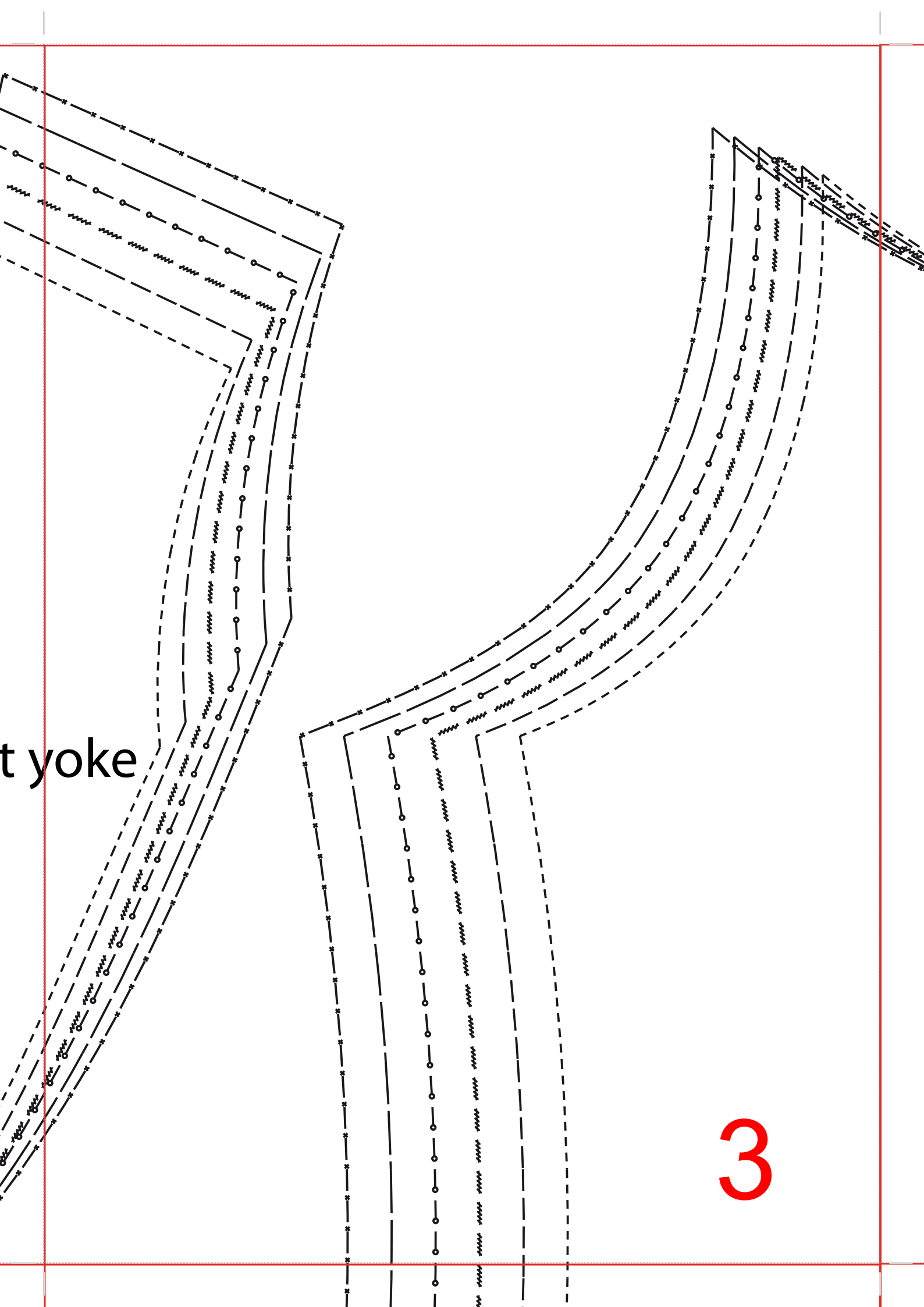
Umbruch / Fold

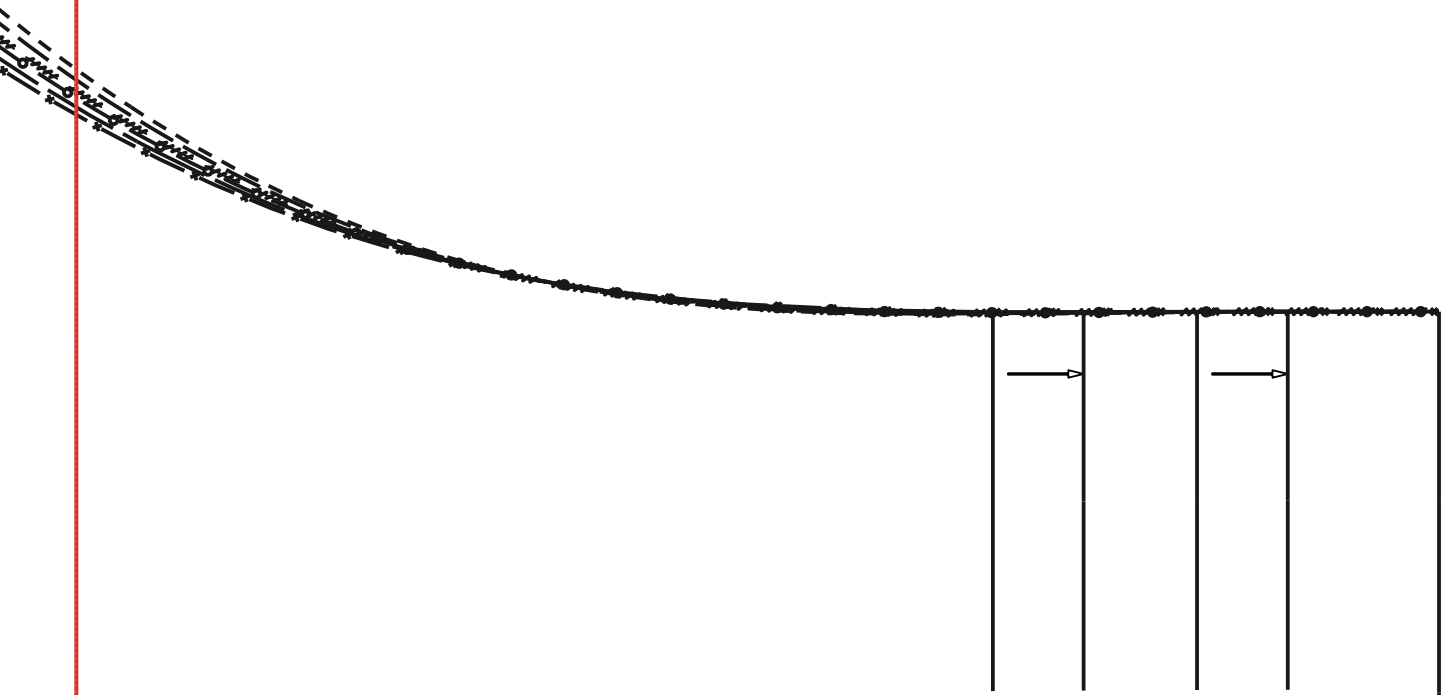
Vordere Mitte / Center front



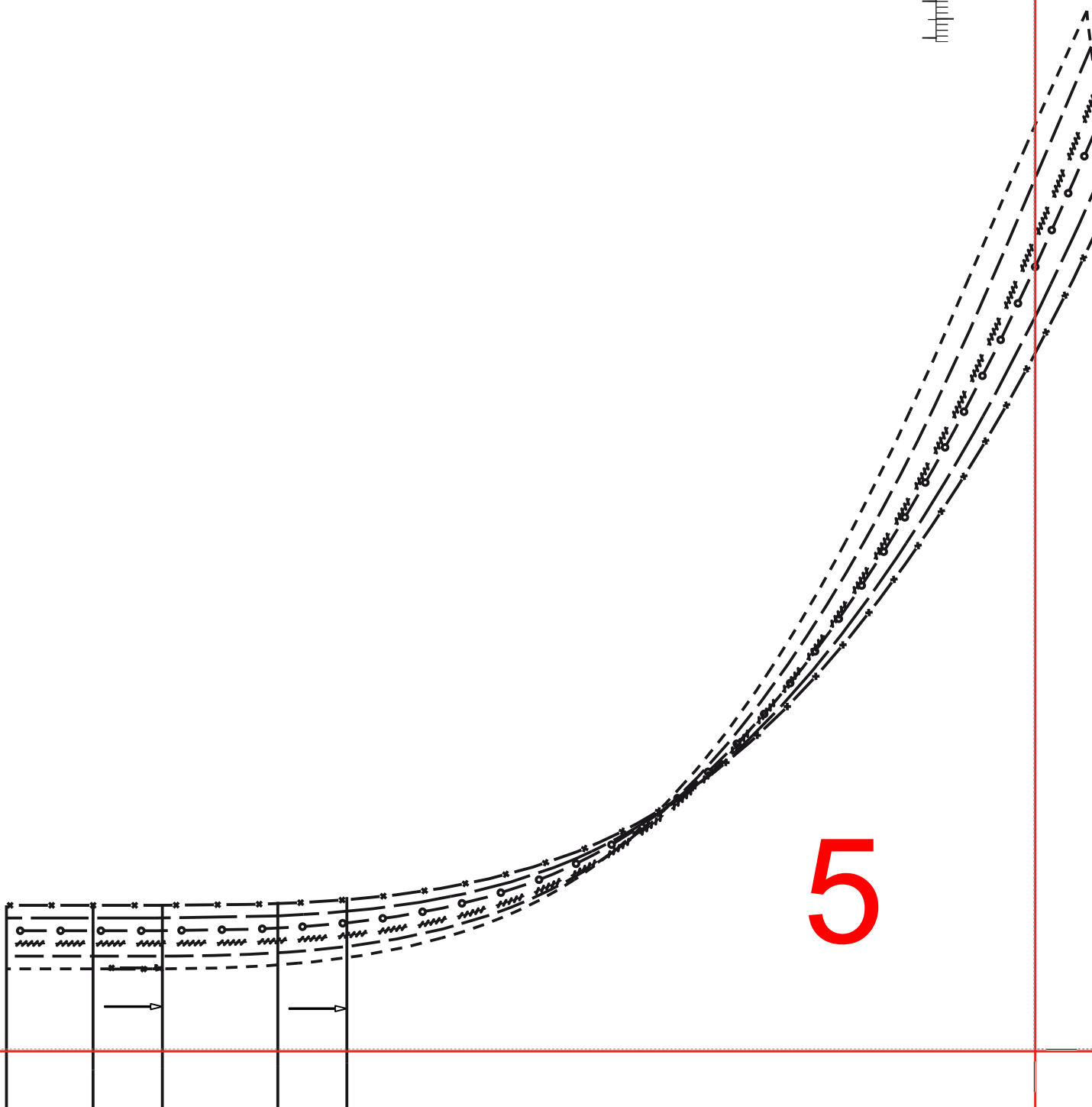
t yoke

3

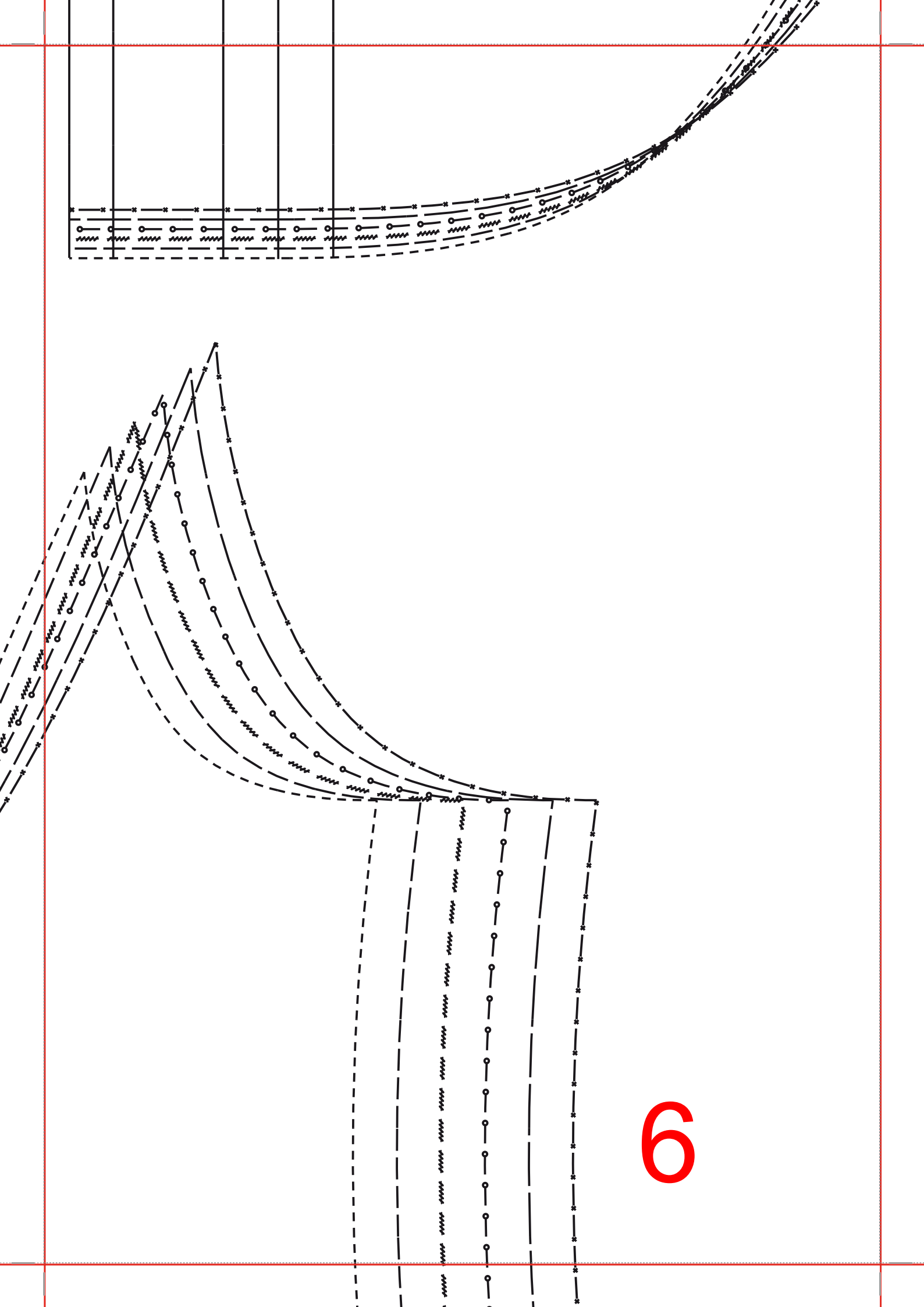




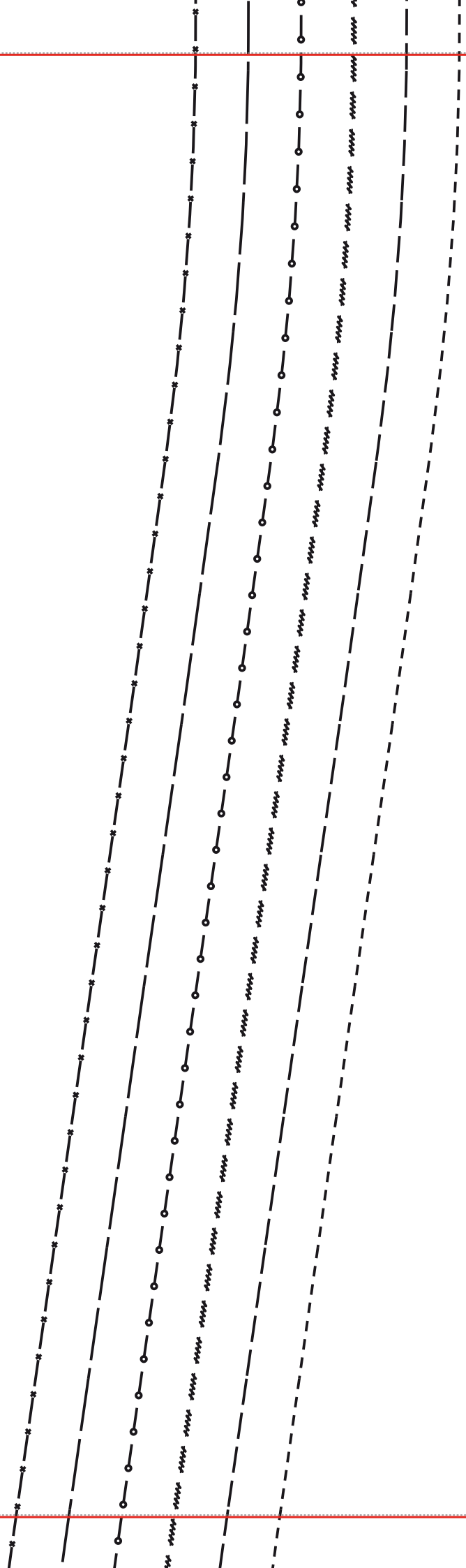
4



5



6



7

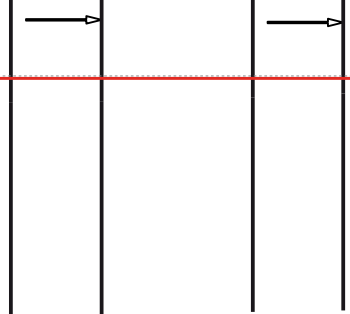
Hintere Mitte / Naht

Center back / Seam



2 Rückenteil / Back

8

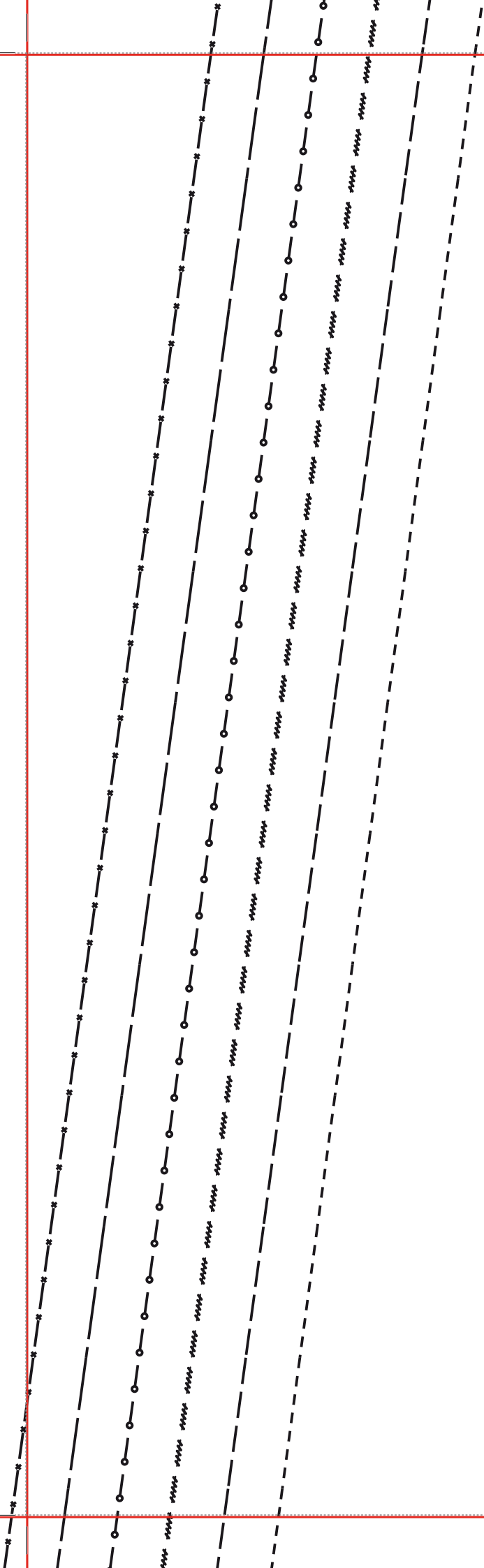


1 Vorderteil / Front

er front / Fabric fold

9

10



Vordere Mitte / Stoffbruch Center front

13

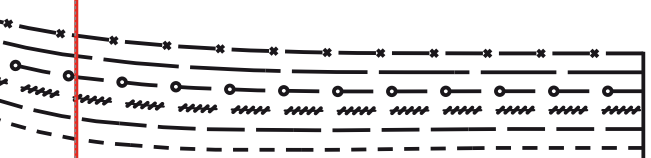
A technical drawing of a corner in a soccer field. It shows a rectangular area with a dashed line representing the back wall. Four lines represent the back passes, each starting from the back wall and ending at the goal line. The lines are labeled with 'x' marks at the start and 'o' marks at the end. The drawing is oriented vertically on the page.

4 Rückw. Pässe/ Back

A logo for 'LONDON' in a bold, black, sans-serif font. The text is set against a white background with a black border. To the right of the text is a red circular graphic element.

LONDON

15

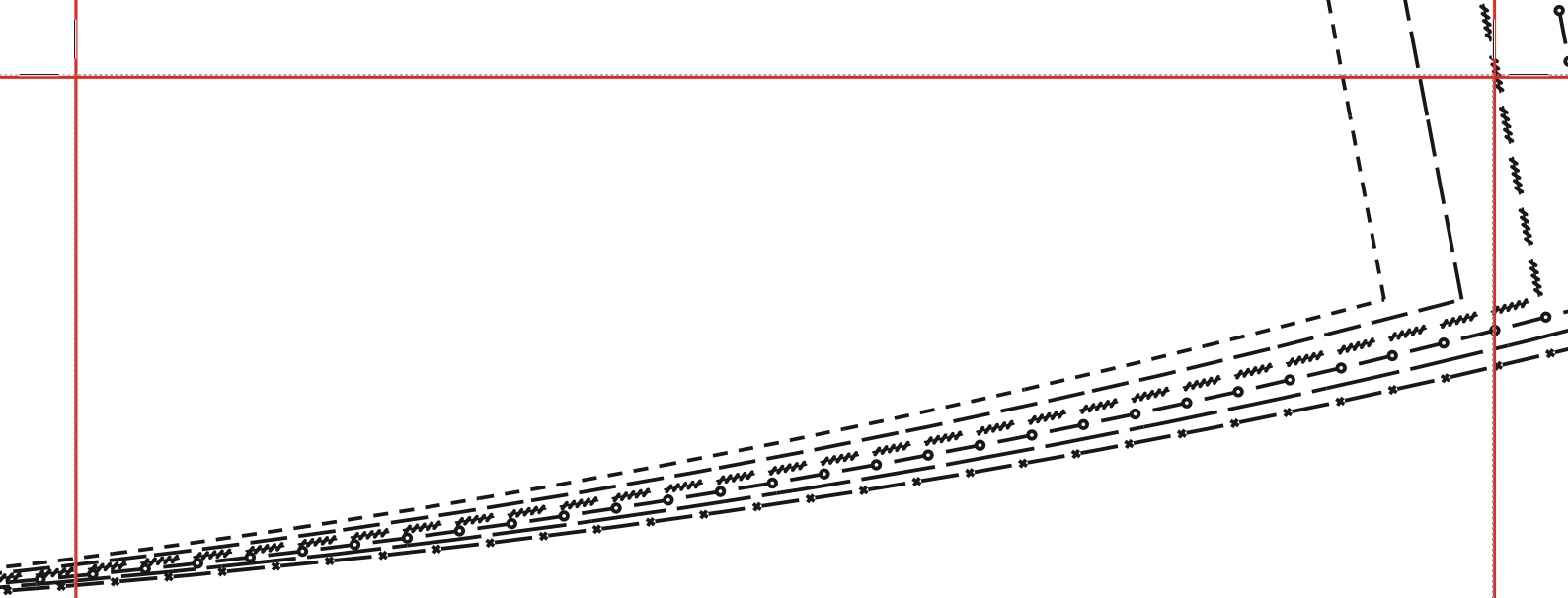


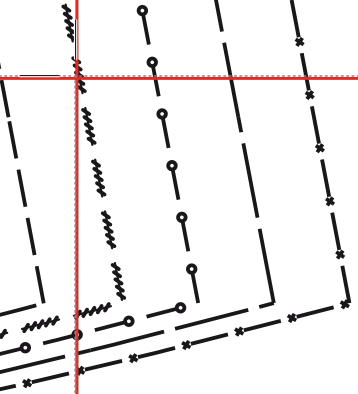
Back yoke



Hintere Mitte / Naht
Center back / Seam







20