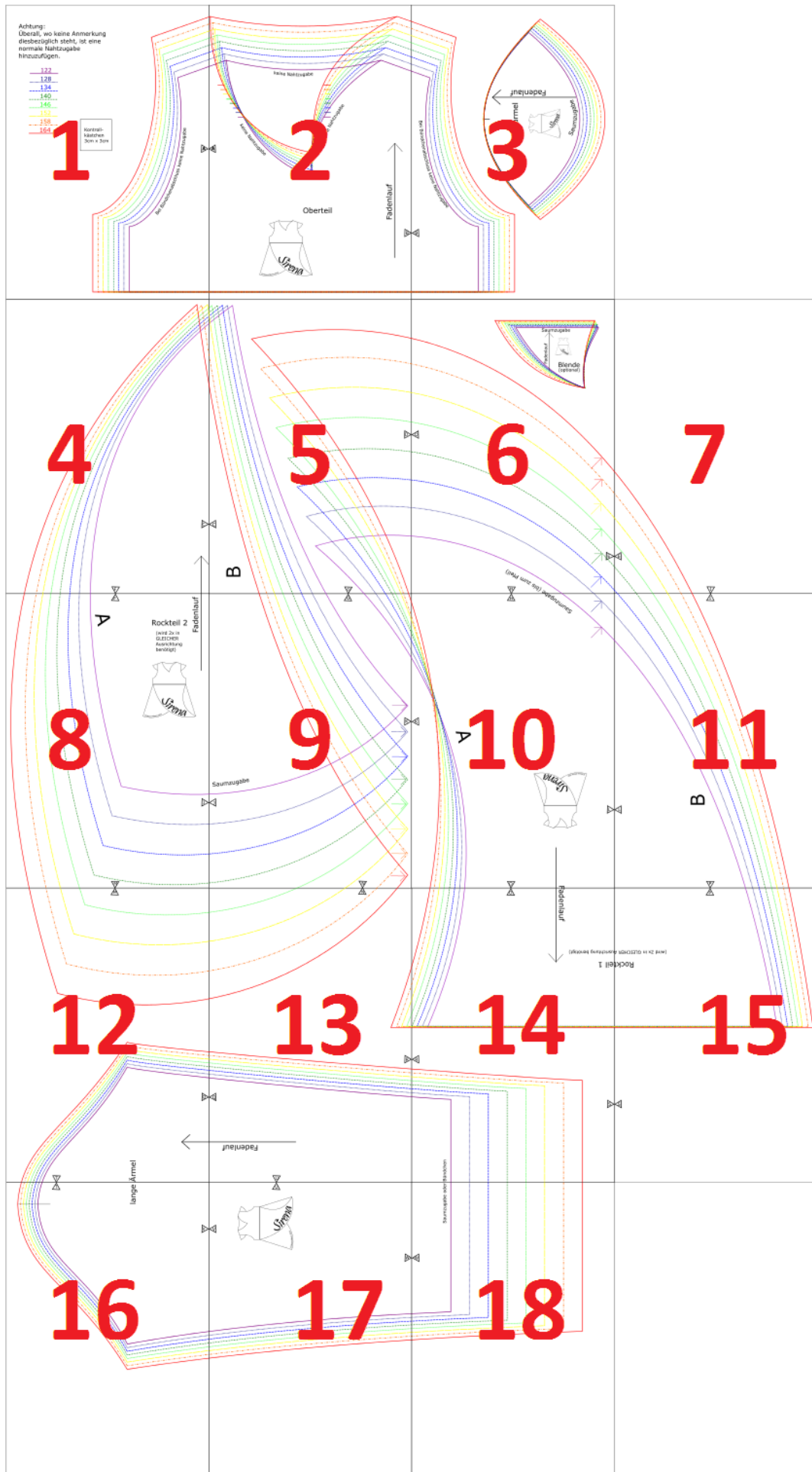


Übersicht

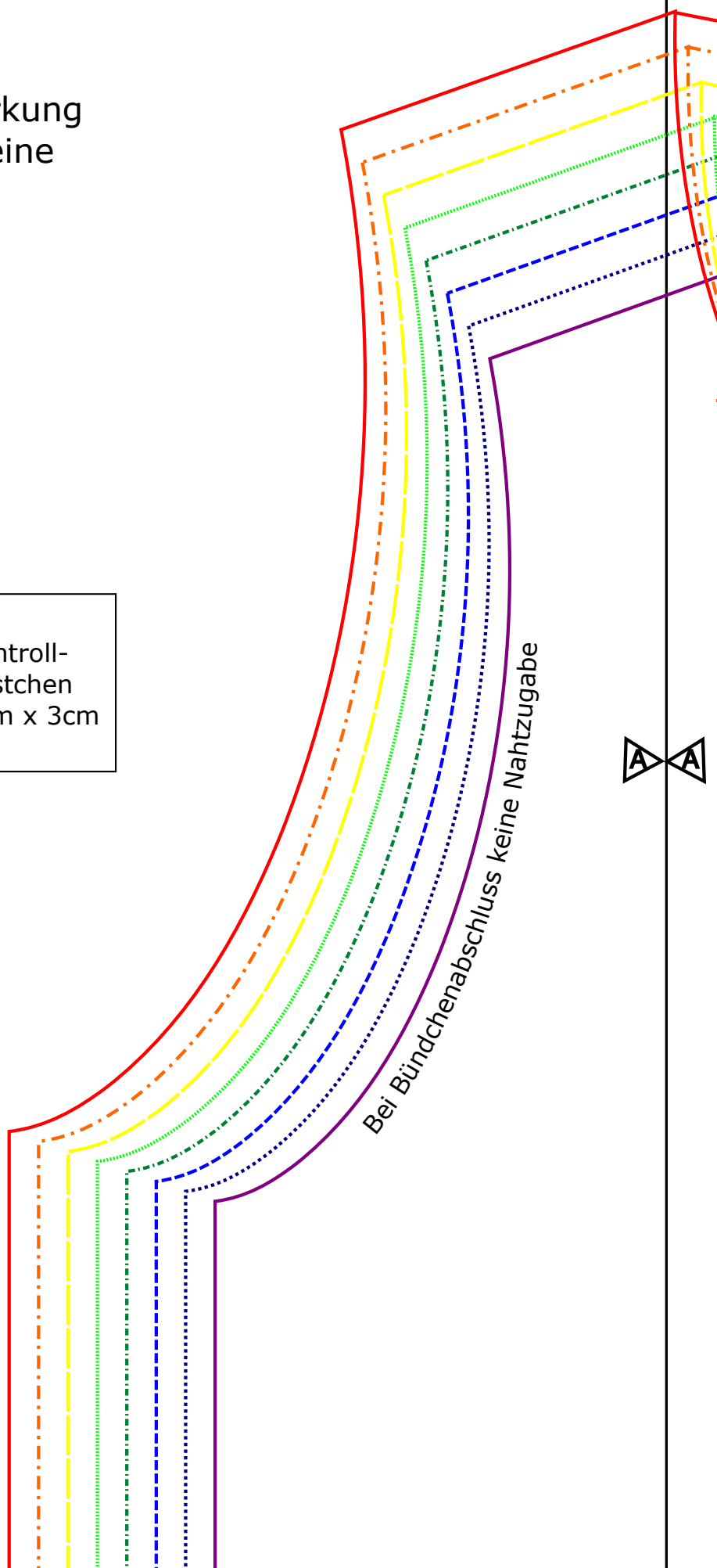
Größe 122 - 164

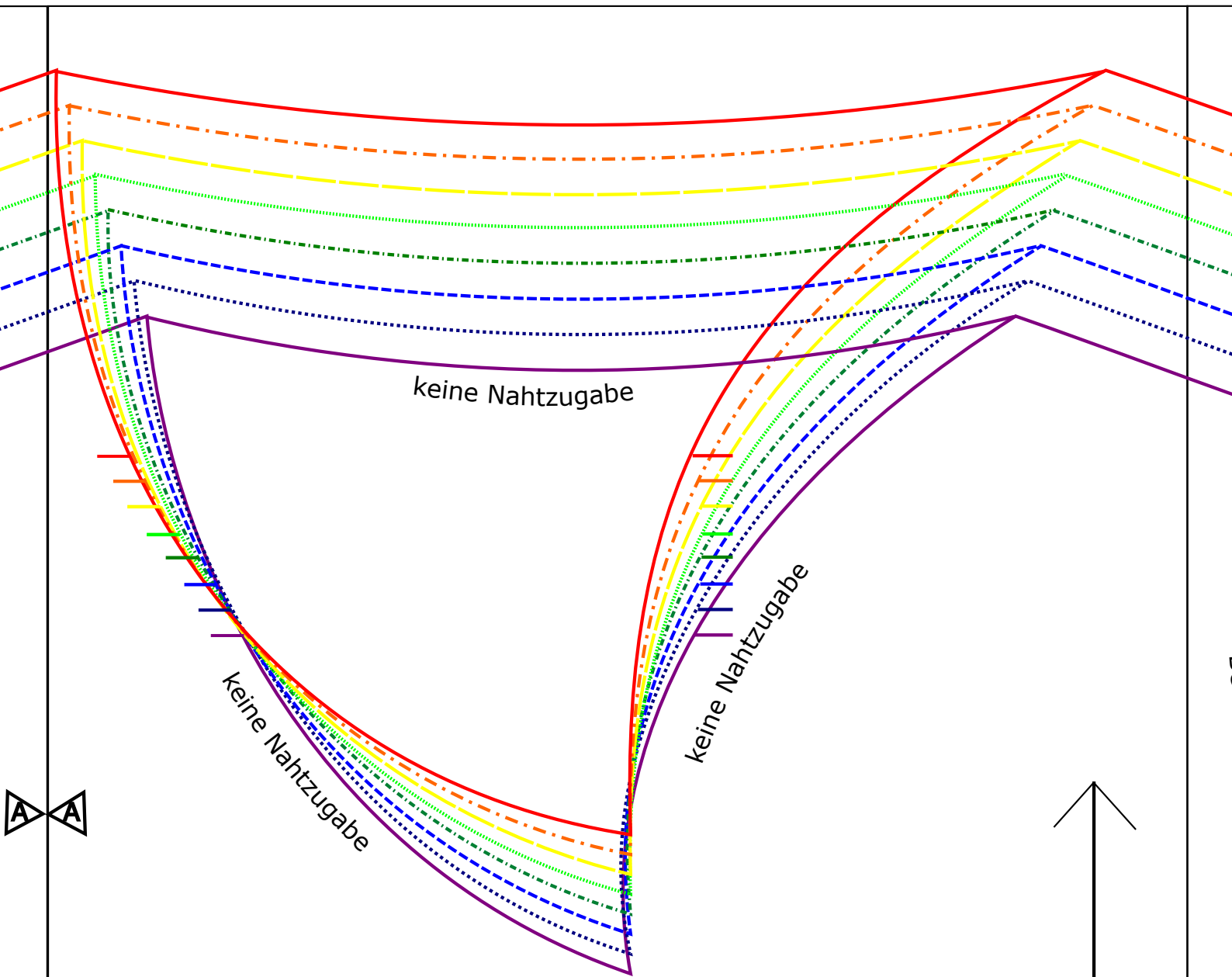


Achtung:
Überall, wo keine Anmerkung
diesbezüglich steht, ist eine
normale Nahtzugabe
hinzuzufügen.

- 122
- 128
- 134
- 140
- 146
- 152
- 158
- 164

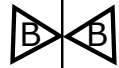
Kontroll-
kästchen
3cm x 3cm



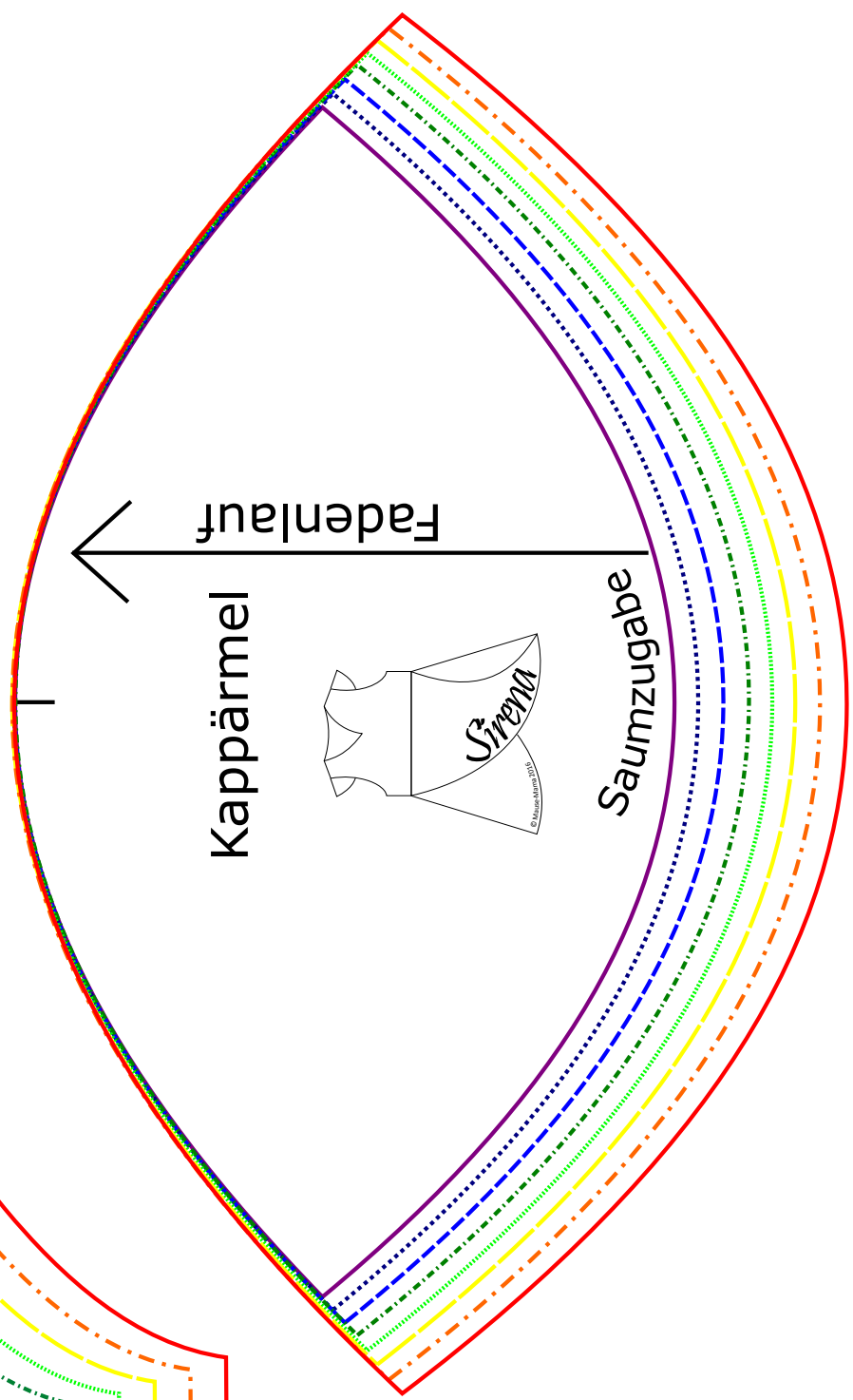


Oberteil





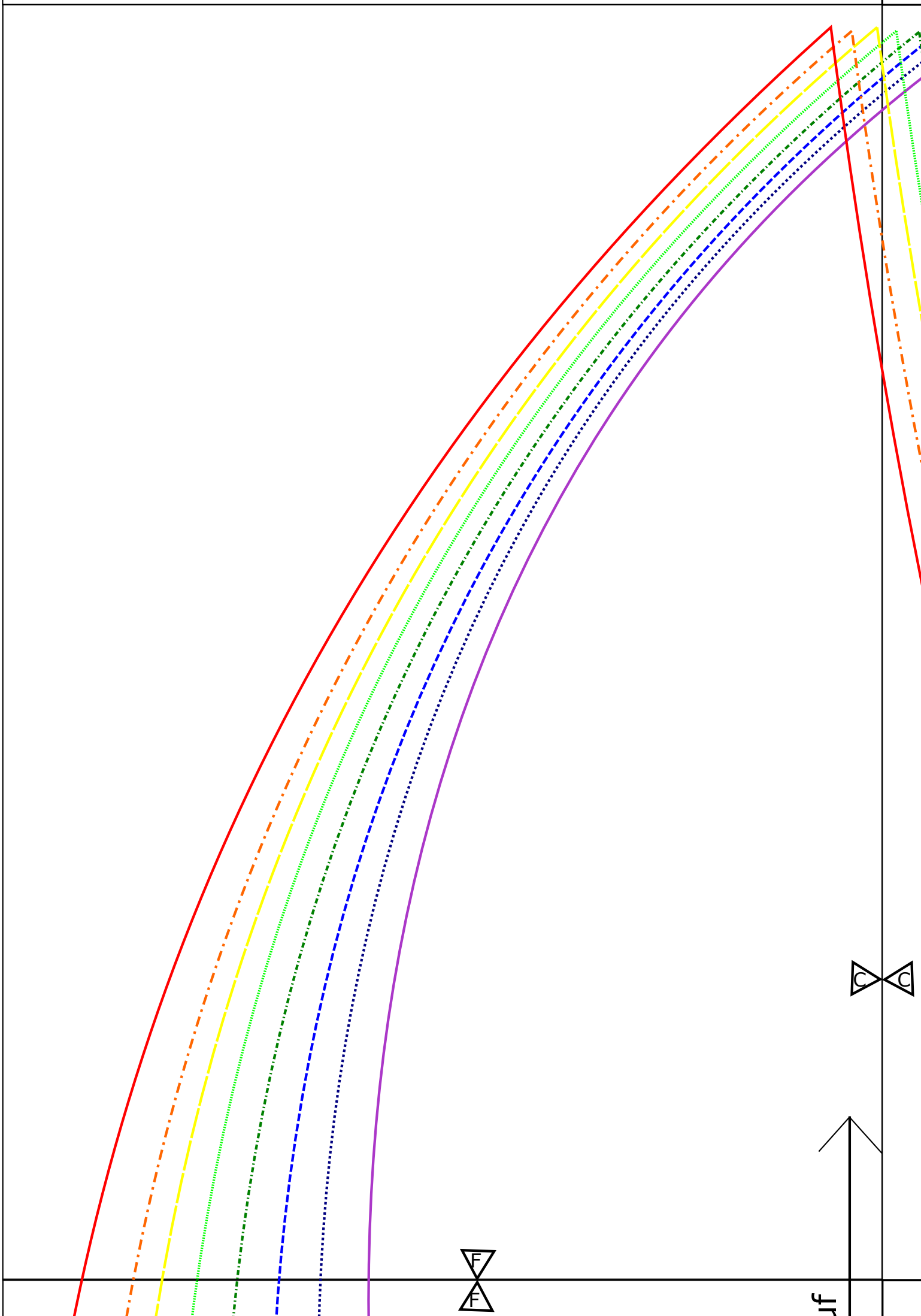
Bei Bündchenabschluss keine Nahtzugabe

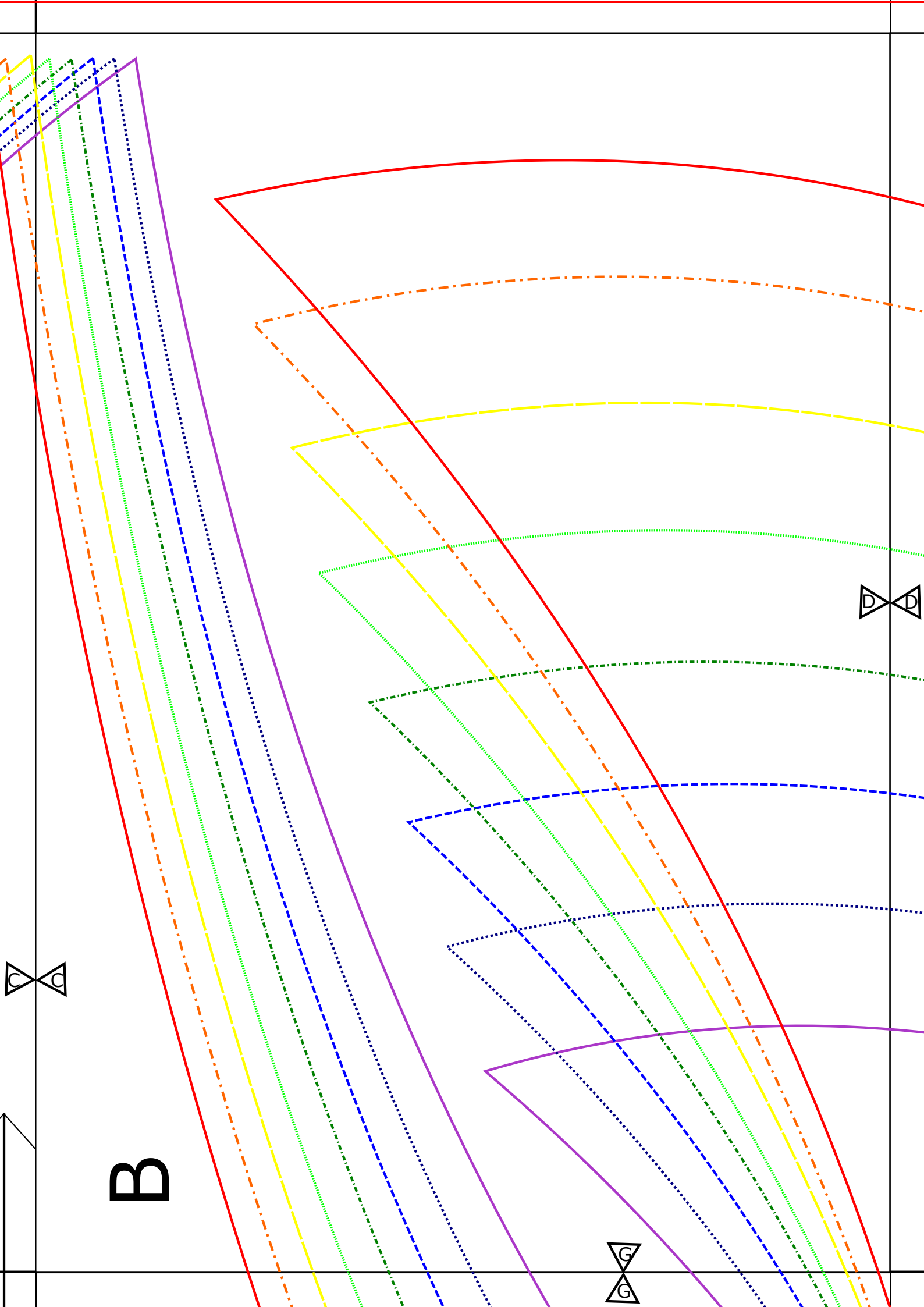


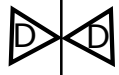
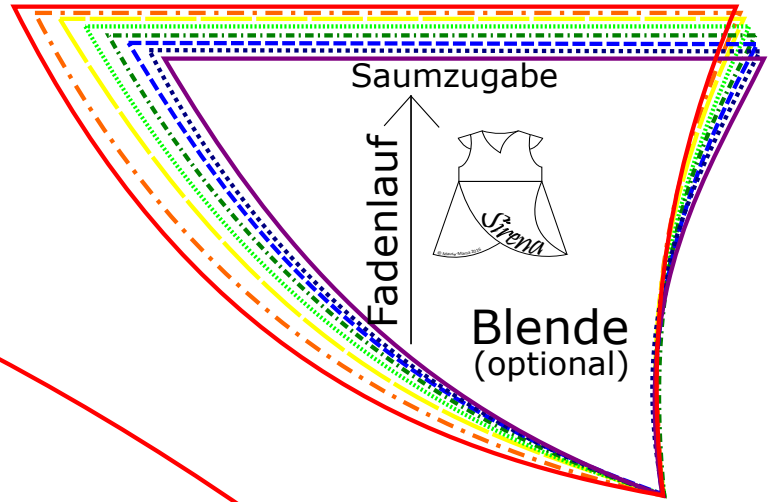
Fadenlauf

Kappärmel

Saumzugabe

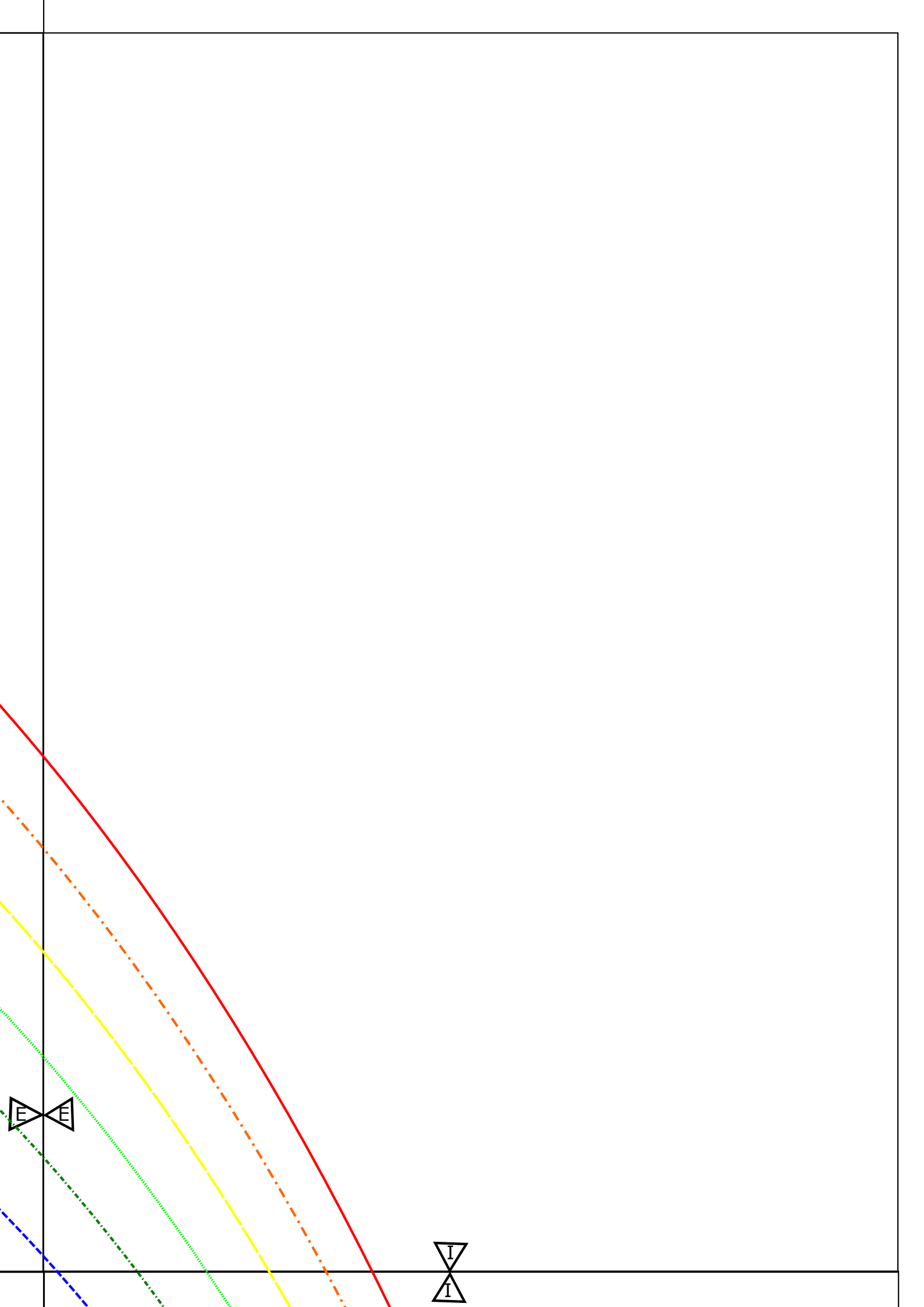






Zugabe (bis zum Pfeil)





Fadenlauf

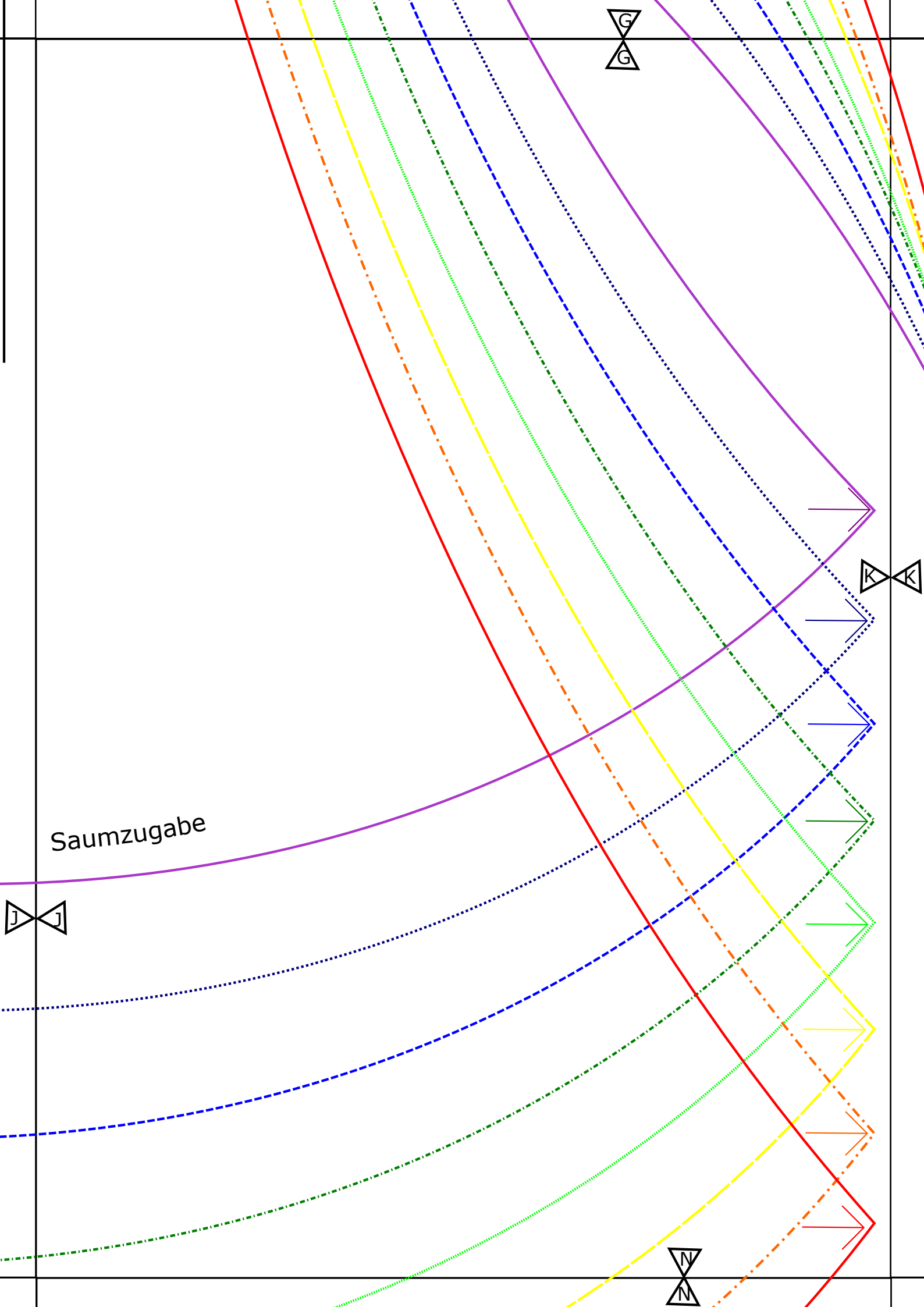
Rockteil 2

(wird 2x in
GLEICHER
Ausrichtung
benötigt)



A





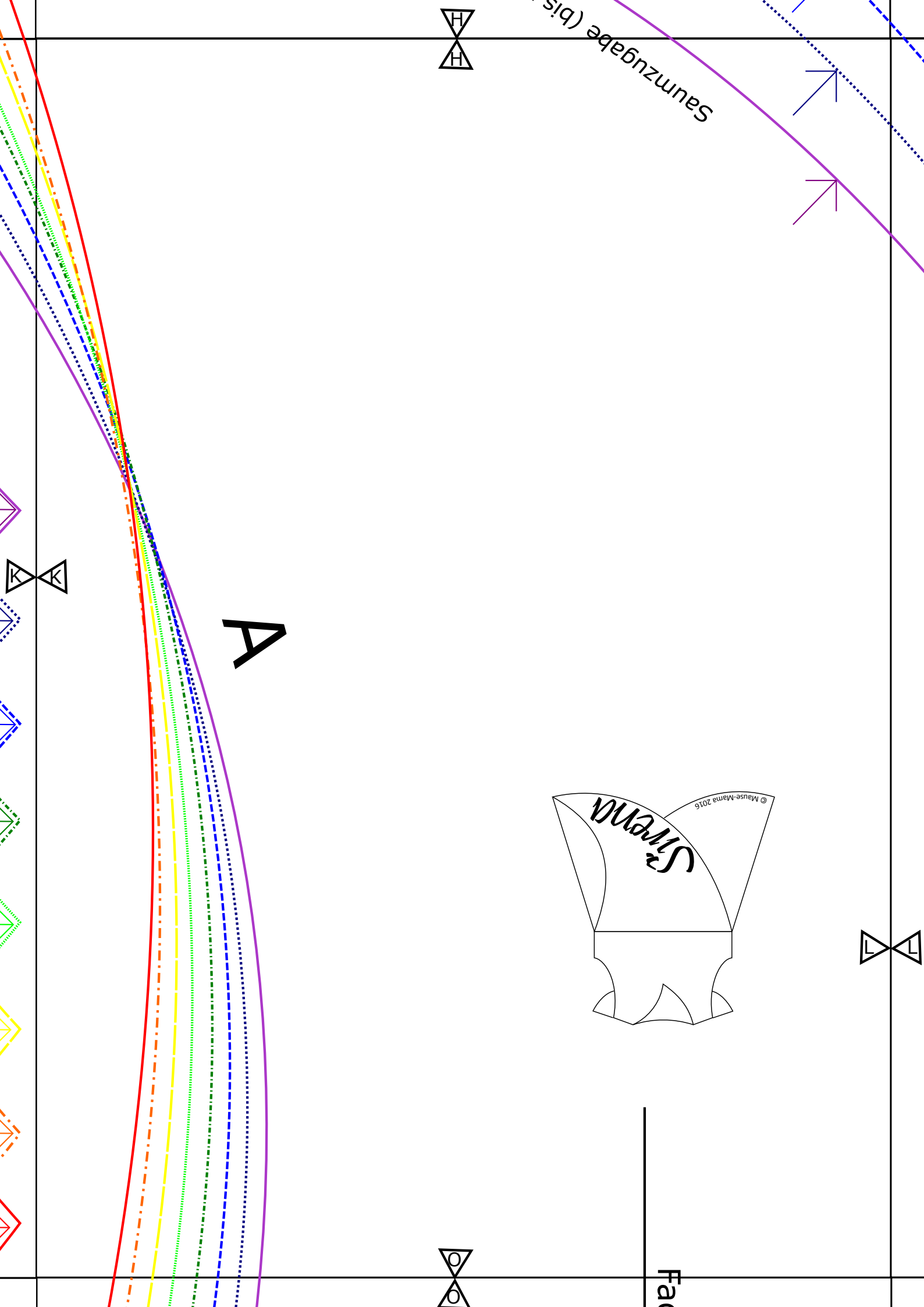
Saumzugabe

J J

G G

K K

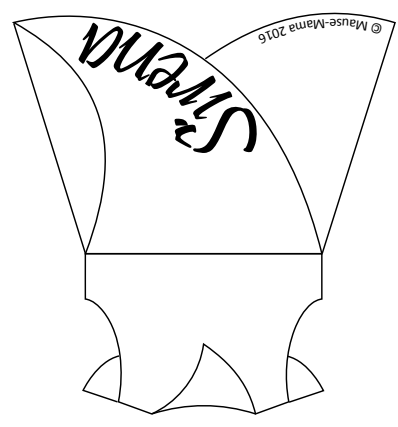
N N

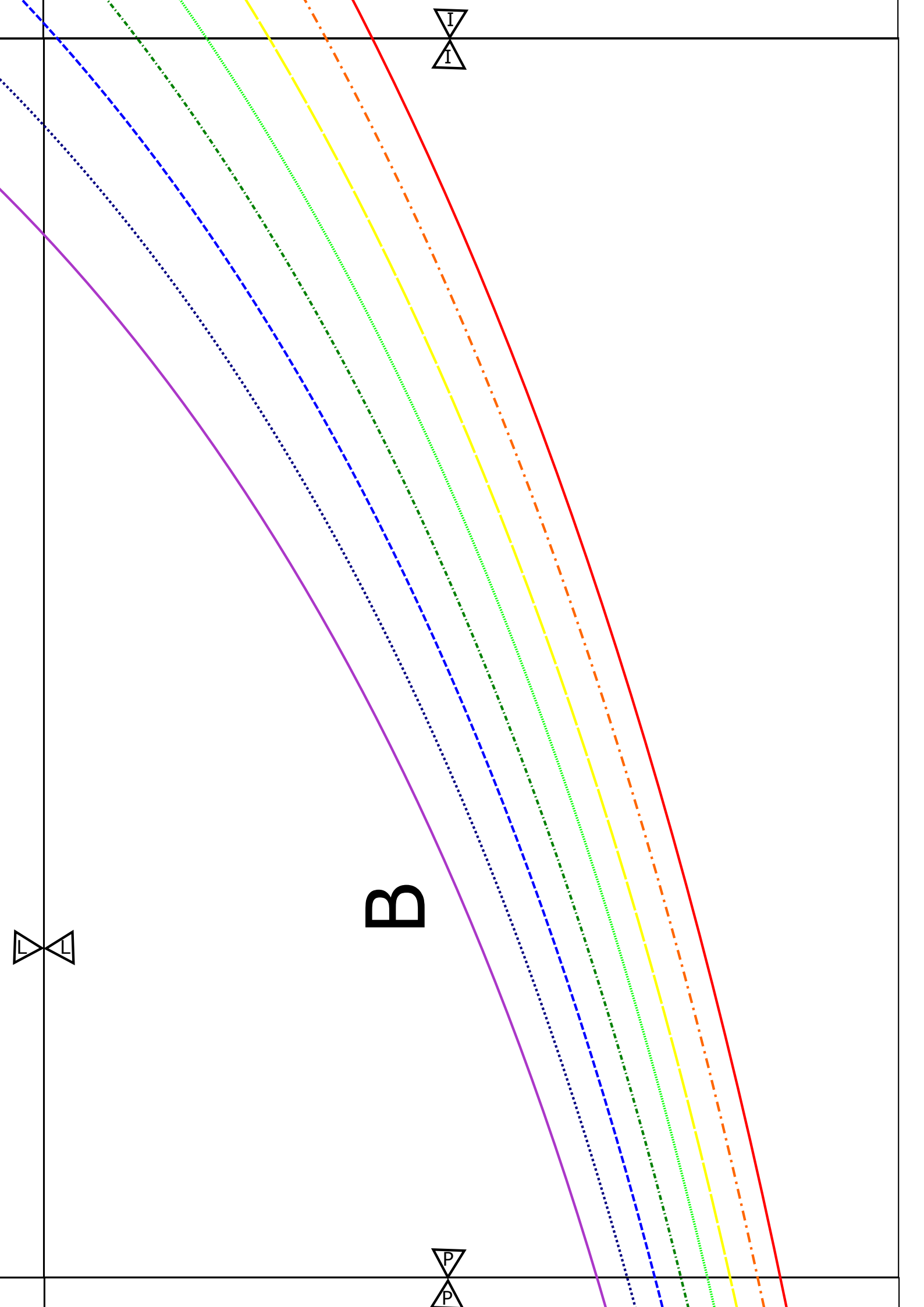


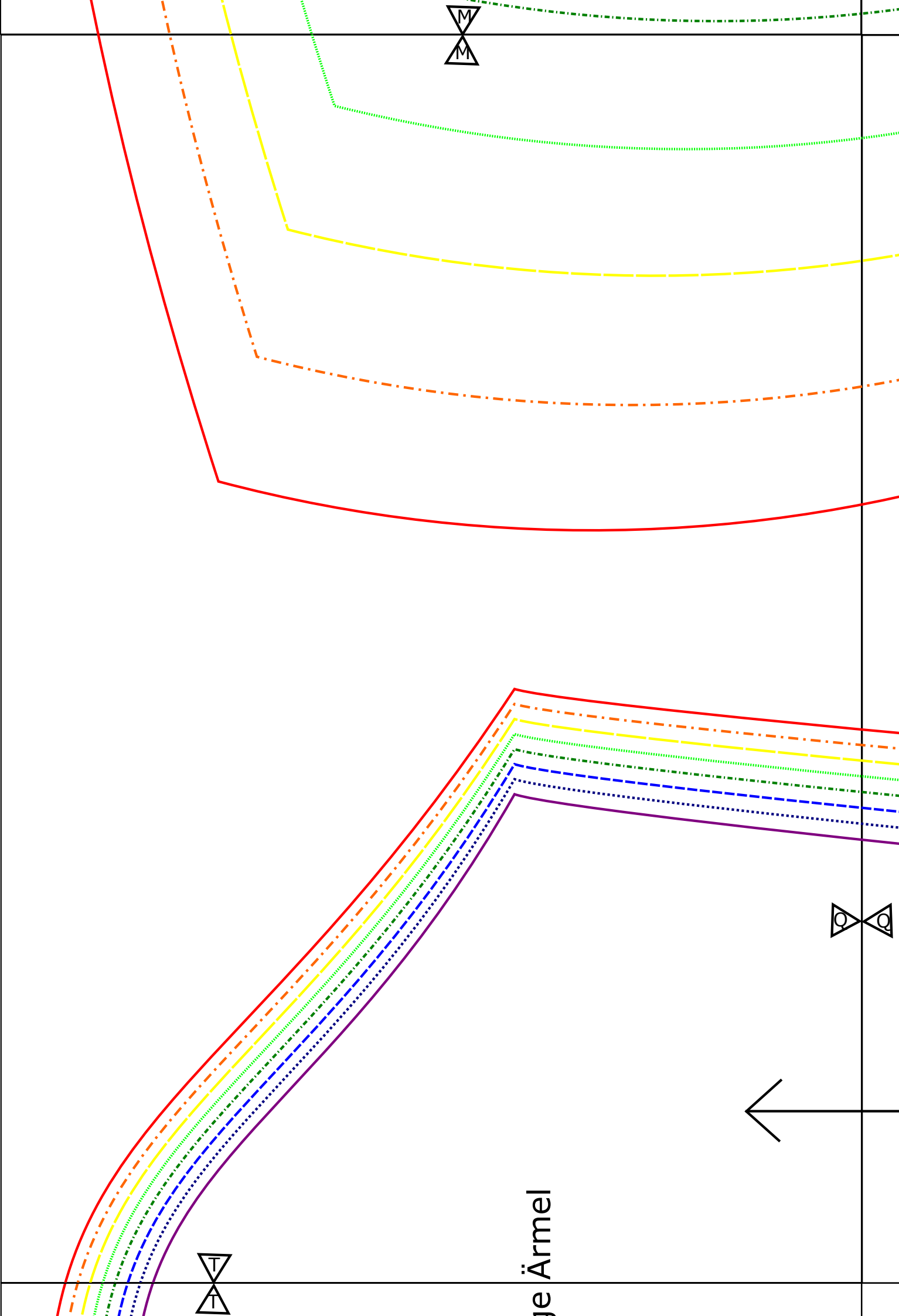
Saumzugabe (bis

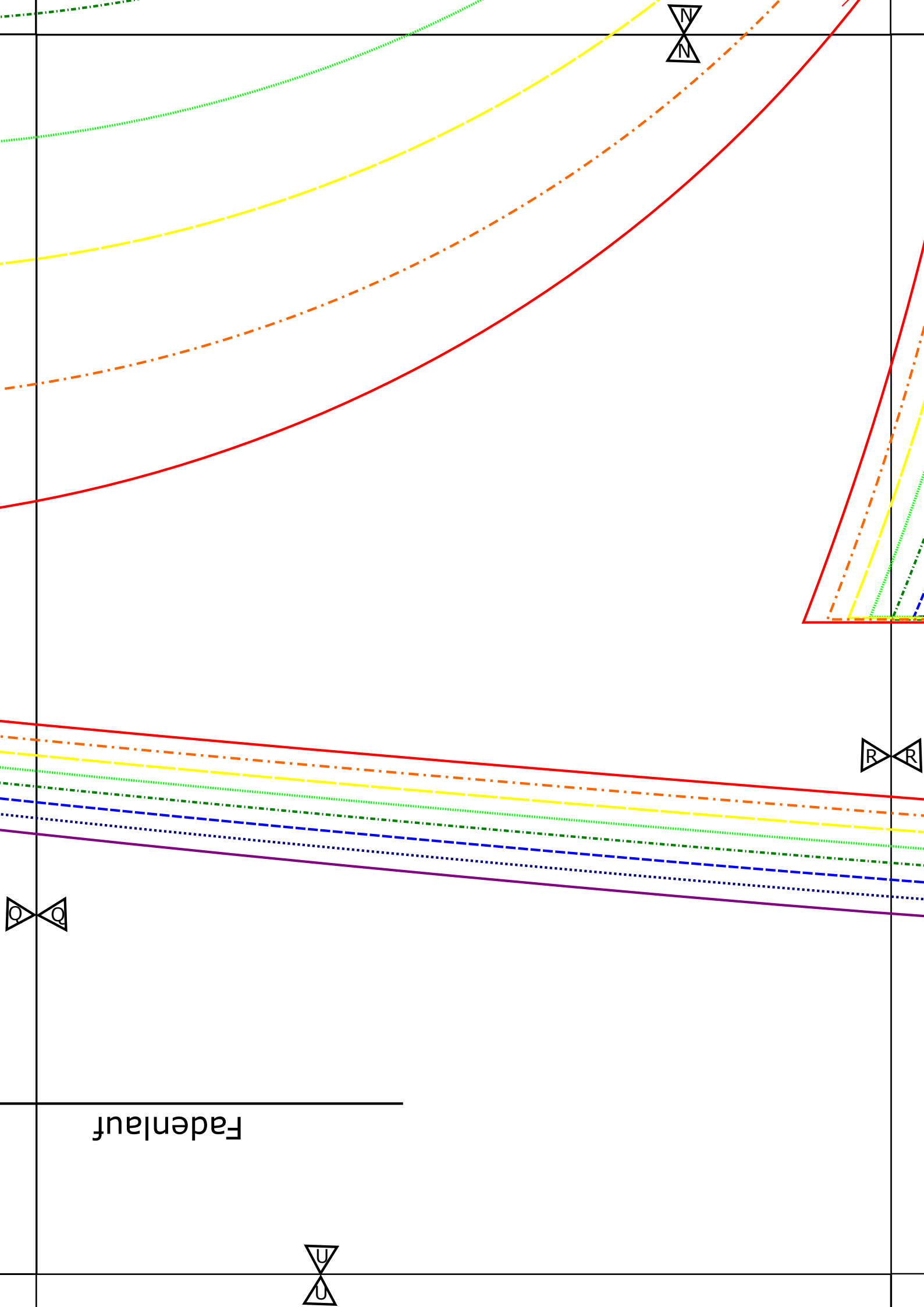
A

Fa

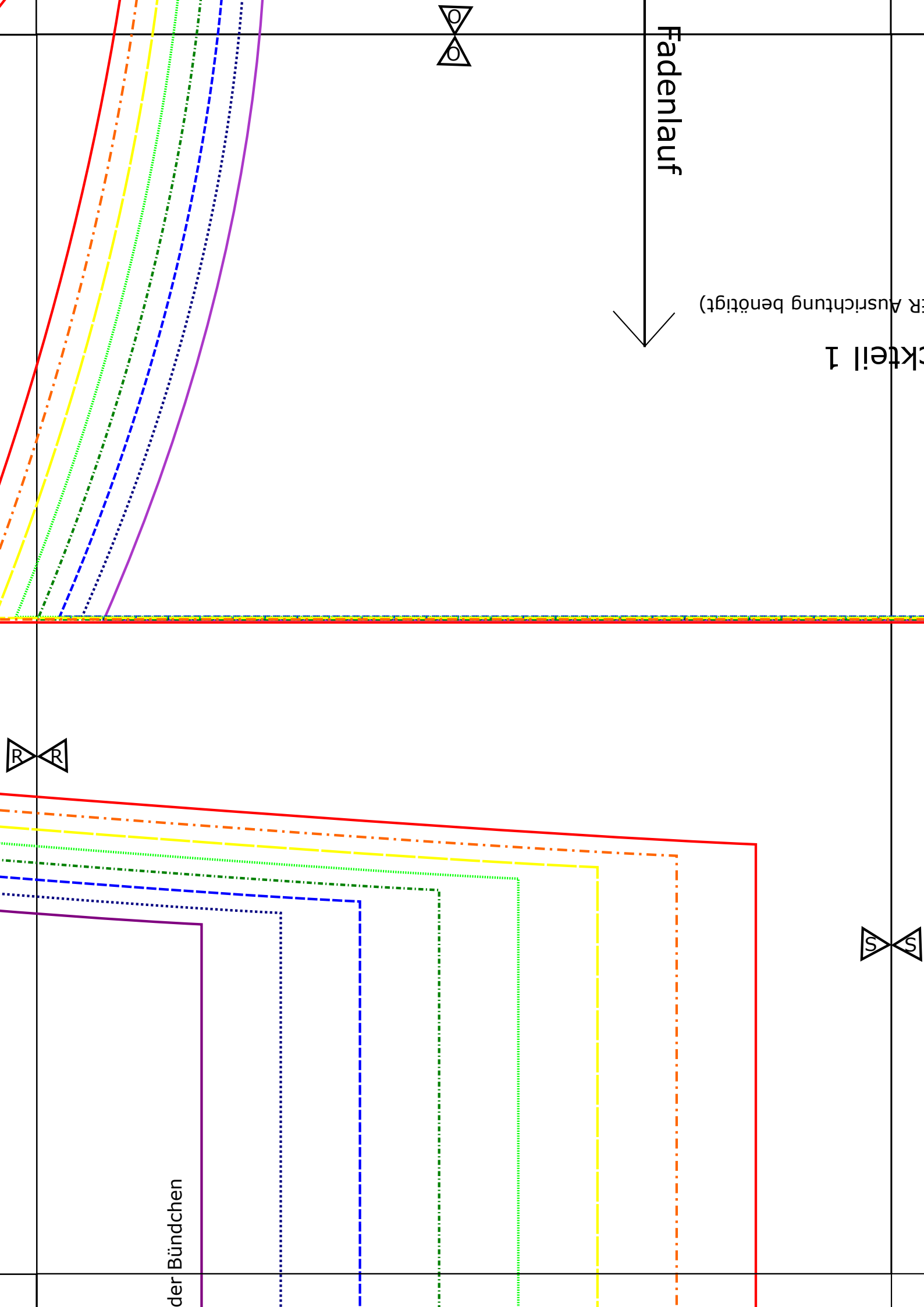








Fadenlauf



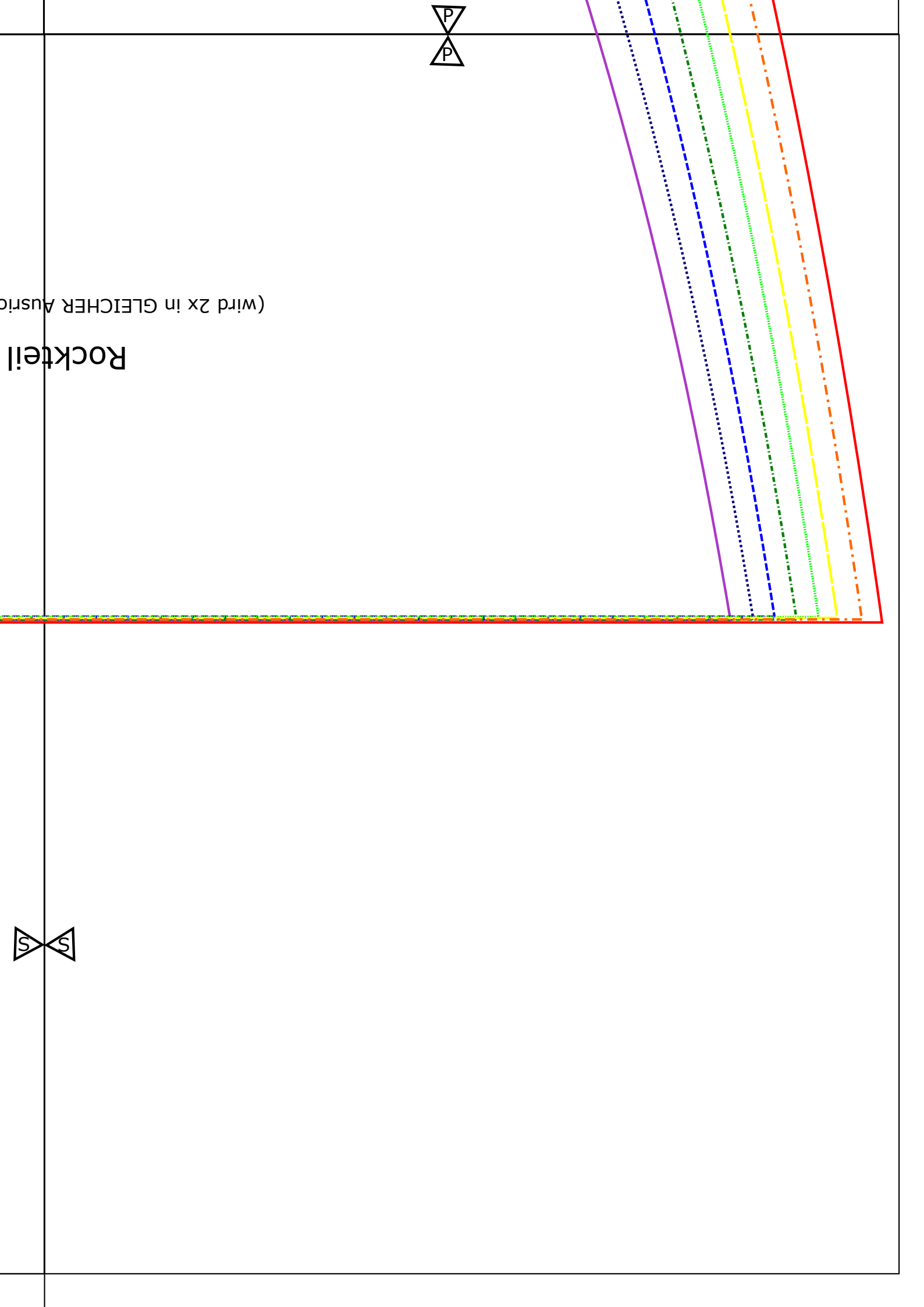
Stückteil 1

(R Ausrichtung benötigt)

Fadenlauf

der Bündchen





P

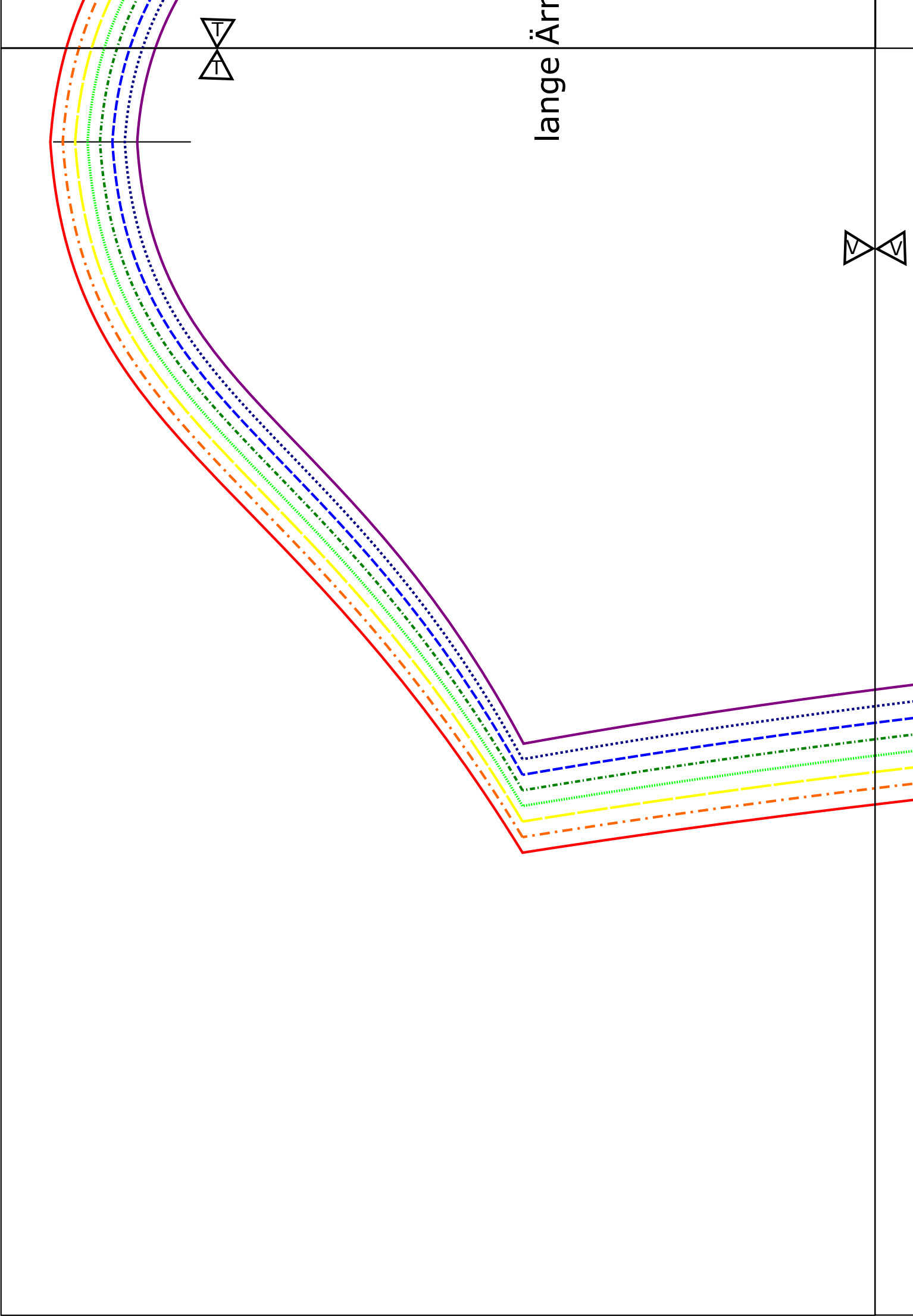
P

S

S

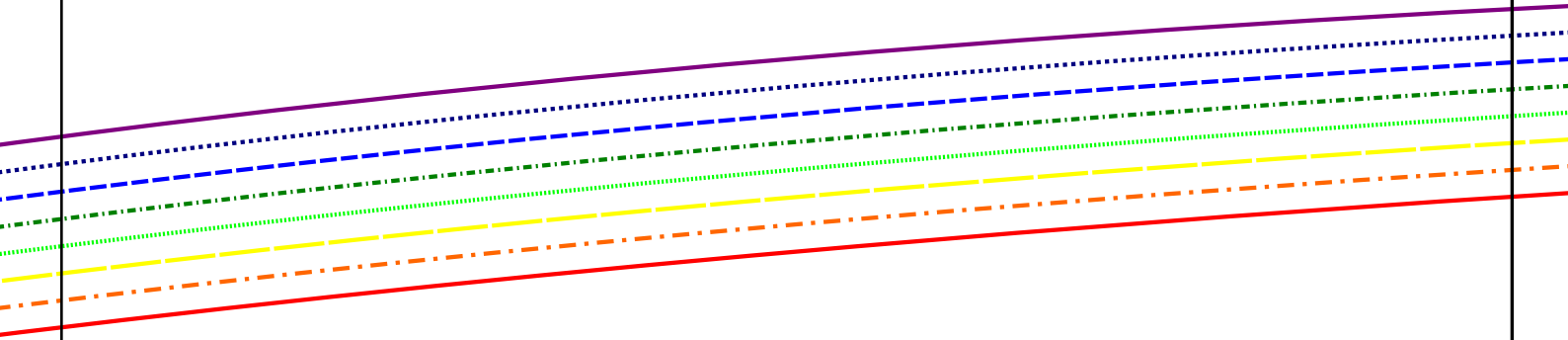
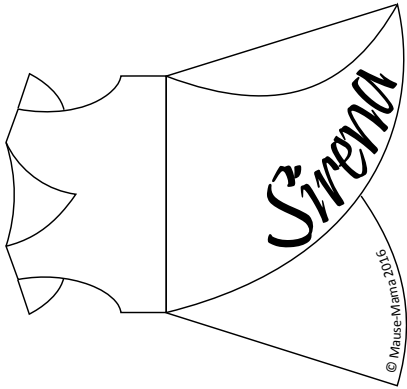
Rocketeil

(wird 2x in GLEICHER Ausrichtung)



lange Ärr





Saumzugabe oder Bündel

