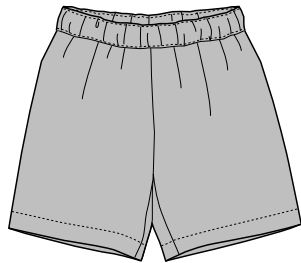
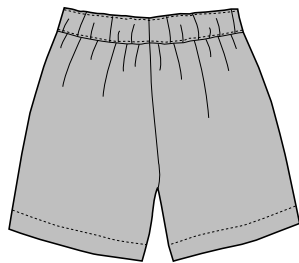


• a free pattern from • **oliver + s** • not for resale •



front



back

SUNNY DAY SHORTS

SIZES 5-12

These simple shorts are a staple for any summer wardrobe. Suitable for both boys and girls, this pattern can be made from a wide array of fabrics. It's also perfect for customizing. Try adding pockets, applique, ribbon, embroidery, or color-blocking. Make these shorts as unique as the kid who will wear them!

SUGGESTED FABRICS: : Light- to medium-weight woven fabrics like quilting cotton, denim, canvas, chambray, and linen.

NOTIONS: Coordinating thread, 1 yard of 3/4" elastic.

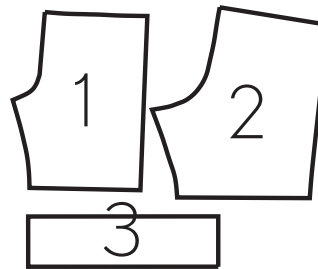
FINISHED MEASUREMENTS

SIZE	5	6	7	8	10	12
Waist, Extended	25 1/2"	26 1/2"	28"	29"	30 1/2"	31 1/2"
Outseam	10"	10 1/2"	11"	11 1/2"	12"	12 1/2"
Inseam	4 1/4"	4 1/2"	5"	5 1/4"	5 1/2"	5 3/4"

FABRIC GUIDE (fabric width: 44" - 45")

SIZE	5	6	7	8	10	12
Shorts	3/4 yard	3/4 yard	3/4 yard	3/4 yard	1 yard	1 yard

PATTERN PIECES



pc # name

- 1 Shorts front
- 2 Shorts back
- 3 Waistband

GLOSSARY

Backstitch: Sew in reverse for a few stitches at the beginning and end of a seam to anchor the seam and prevent stitches from coming unsewn.

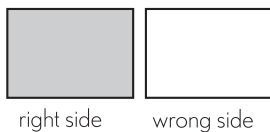
Baste: Use the longest stitch available on your sewing machine to stitch 1/2" from the edge, seam, or previous stitching. Basting is primarily used as a temporary way to keep multiple layers of fabric together.

Edgestitch: A straight stitch sewn from the right side of the fabric that's between 1/16" and 1/8" from and parallel to a fabric's edge, a seam, or another stitching line, which anchors, reinforces, or finishes that edge, seam, or stitching line. When edgestitching, use the edge of your presser foot as a stitching guide.

Finish the seam allowances: Run a zigzag stitch over the raw edge of the seam allowance, or straight-stitch 1/4" from the raw edge and trim the edge with pinking shears to prevent ravelling. You can also finish seam allowances with a serger but note that if you use a serger, be sure to lift the serger's cutting blade out of the way before serging in order to prevent cutting off the seam allowances as you serge.

Lockstitch: Use this easy, almost invisible way to secure the stitches at the beginning and end of a stitching line: With your fabric positioned under the needle at the beginning of the stitching line, set the stitch length to zero (or the shortest stitch length your machine offers) and take a couple of stitches in place. Then reset the stitch length to its regular length and sew the stitching line. At the end of the stitching line, set the stitch length again to zero (or the shortest length possible) and take a couple of stitches in place.

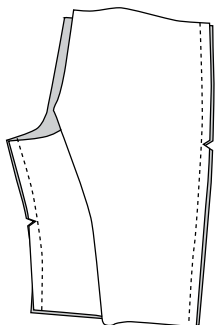
KEY



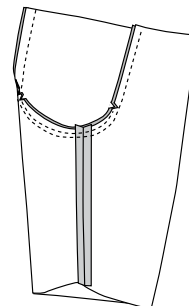
SEWING INSTRUCTIONS

PREPARE THE FRONT AND BACK

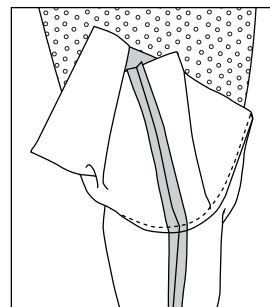
1. Align and pin one shorts front to the corresponding shorts back, with right sides together, and stitch the inseam and out-seam (the side seam) with a 1/2" seam. Press the seam allowances open, and finish them with your preferred method. Repeat to assemble the second shorts front and back.



2. Turn one shorts leg right side out and the other leg wrong side out. Slip the right-side-out leg into the wrong-side-out leg, and pin the layers together with the edges, notches, and seams aligned. Stitch the rise (the crotch) with a 1/2" seam. Stitch the rise a second time on top of or just inside of the first seam, starting at the single notch and ending at the double notches. Stitching a second time will help strengthen this seam.

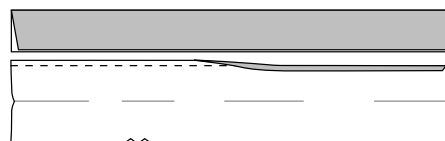


3. Press the rise's seam allowances open or to one side. Since the fabric is cut on bias at the curved part of the rise, the seam allowances will stretch, so you can use the curved front of your ironing board to help you open the seam allowances. If you turn the shorts wrong side out and position the rise along the ironing board's curved edge, you'll be able to press the seam allowances to one side of the seam without creasing the rest of the fabric. Finish the seam allowances together using your preferred method.

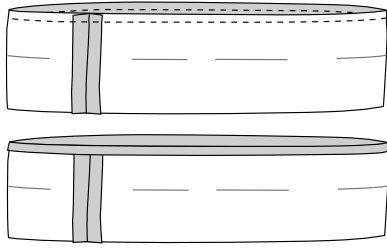


ATTACH THE WAISTBAND

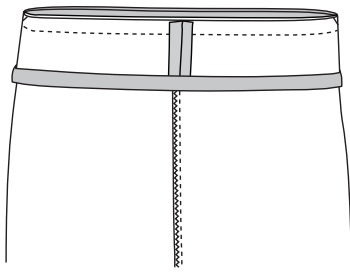
1. Fold the waistband in half lengthwise, with wrong sides together, and press a crease into the center. Unfold the waistband, and sew a line of basting stitches 3/8" from one long edge. Fold and press the fabric to the wrong side along the basting line.



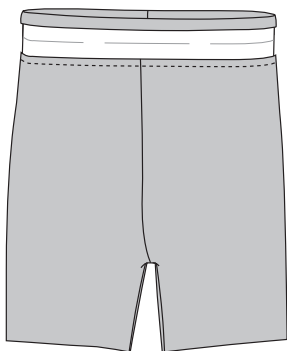
2. Unfold the pressed waistband edge; then fold and pin the short ends of the waistband together, with right sides facing and the raw edges aligned. Stitch the short edges with a 1/2" seam, backstitching or lockstitching on both ends. Press the seam allowances open. Re-fold the previously pressed long edge.



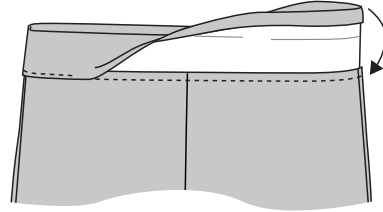
3. Align and pin the waistband's unfolded edge to the top edge of the shorts, with the right side of the waistband facing the wrong side of the shorts. Match the waistband's seam with the center-back seam of the shorts, and align the waistband's notches with the side seams of the shorts. Stitch the waistband to the shorts with a 1/2" seam.



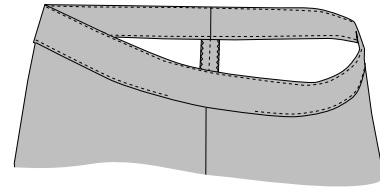
4. Turn the shorts right side out, and press the waistband and seam allowances up, away from the shorts. Trim the seam allowances to 1/4" to reduce bulk in the finished waistband.



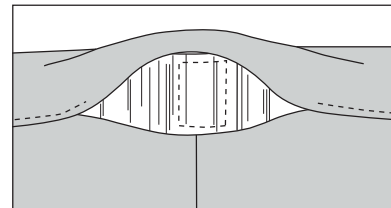
5. Fold the waistband over the seam allowances to the right side of the shorts along the original center crease, and pin the waistband's folded edge, so it covers the stitching. Working on the right side (the outside) of the shorts, edgestitch the waistband's innermost folded edge to finish it, leaving about 2-3" unsewn at the center back to make an opening through which to feed the waistband elastic.



6. Edgestitch the top folded edge (make this a narrow edge-stitch if you can—1/16" would be ideal) to help prevent the elastic from twisting in the waistband and to give the waistband a clean, finished appearance.



7. Attach a safety pin or bodkin to one end of the elastic, and feed the elastic through the waistband casing. Adjust the length of the elastic to fit the wearer's waist, and trim the elastic to the desired length. Next overlap the two ends of the elastic by about 3/4", and pin them together. Then sew the pinned ends together by stitching a small rectangle on the overlapped edges, removing the pin as you sew and lockstitching at the beginning and end of the rectangle.



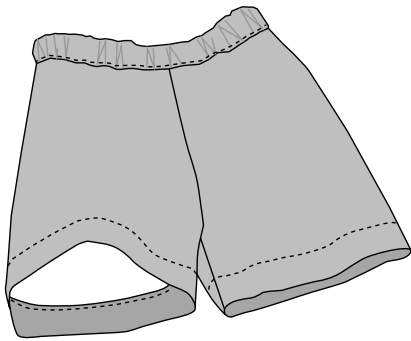
NOTE: Elastic can vary a great deal in the amount of stretch it has, depending on its quality. If you're unsure of the length to cut the elastic, start by cutting it 1" smaller than the child's waist measurement, and then shorten the elastic as necessary.

8. Finish edgestitching the waistband's opening to close it, backstitching or lockstitching at both ends of your stitching.

HINT: When you stitch this opening closed, stitch a little piece of folded ribbon into the waistband seam at the inside center back to help identify the back of the finished shorts.

FINISH THE SHORTS

1. To hem the shorts, fold and press the bottom edges toward the wrong side, first by 1/2" and then by 1". Edgestitch the innermost folded edge to finish the hem, and then press the hem one final time.



OLIVER + S DISCUSSION FORUMS

For answers to sewing questions, visit our discussion forums at oliverands.com/forums.

PATTERN SIZE KEY

—————	12
- - - - -	10
- - - - -	8
- - - - -	7
- - - - -	6
- - - - -	5

NOTE: Seam allowances are included.
All seams are 1/2" unless otherwise noted.

oliver + s

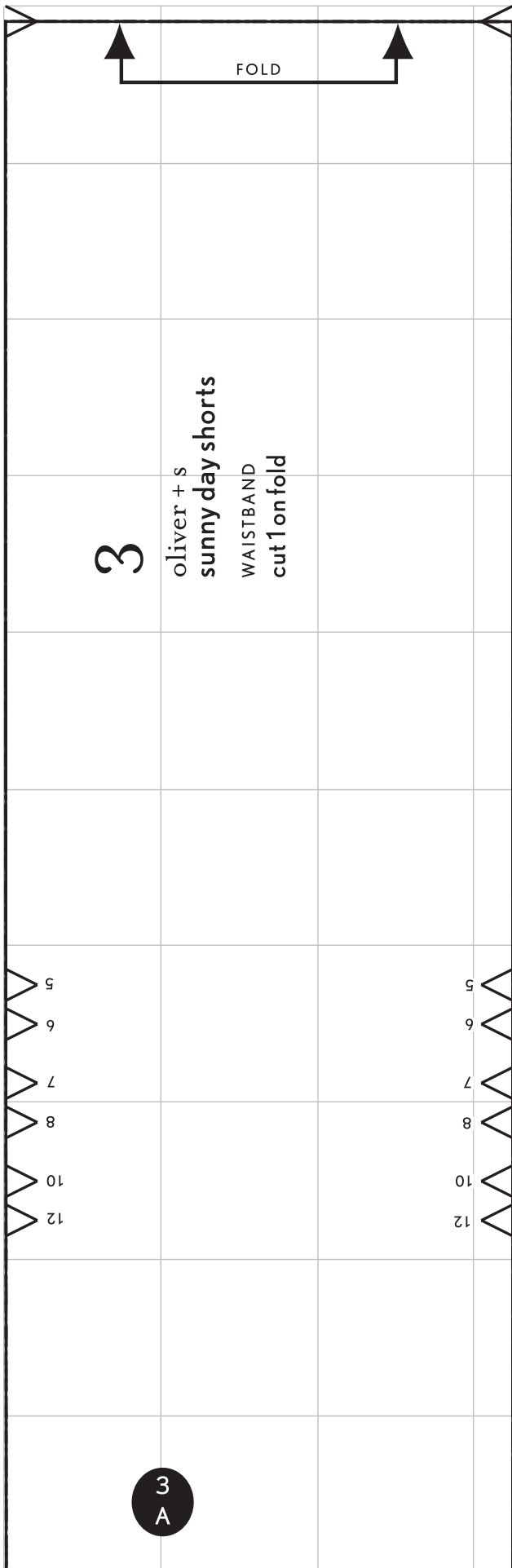


New York, NY

This pattern is for private, noncommercial use only. The images, layout, design and other aspects of this pattern are copyright © Liesl + Co., Inc. 2014. If you wish to make and sell items from this pattern, please contact us for terms. Otherwise, no part of this design or pattern may be reproduced in any form.

oliverands.com

5 7 9 10 8 6 4



3

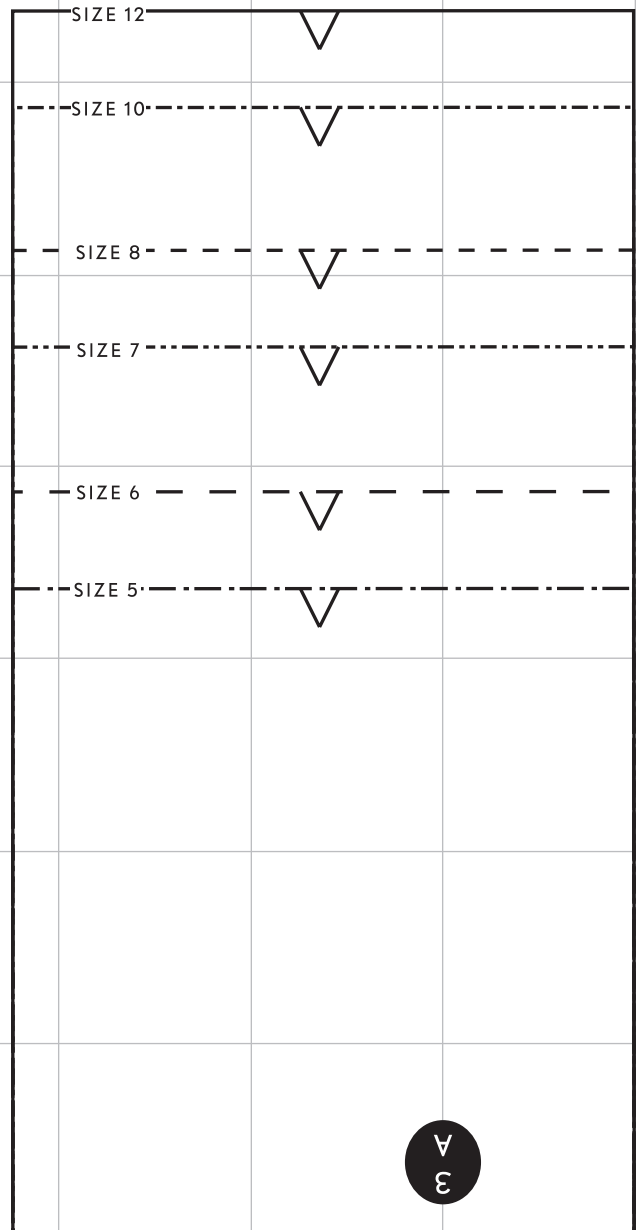
oliver + s
sunny day shorts
WAISTBAND
cut 1 on fold

3
A

**TO TILE THE LARGE PATTERN PIECES
ON THE FOLLOWING PAGES**

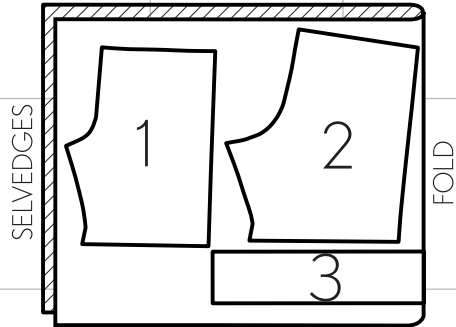
Cut out all pattern pieces on the following pages.
If a piece bleeds over the gridded area, trim the
edge from the piece so that only the grid remains.
Join the piece to another near the matching let-
ters using the grid lines to align the pieces.

1" TEST SQUARE
On subsequent pages,
all grid lines form 1"
squares

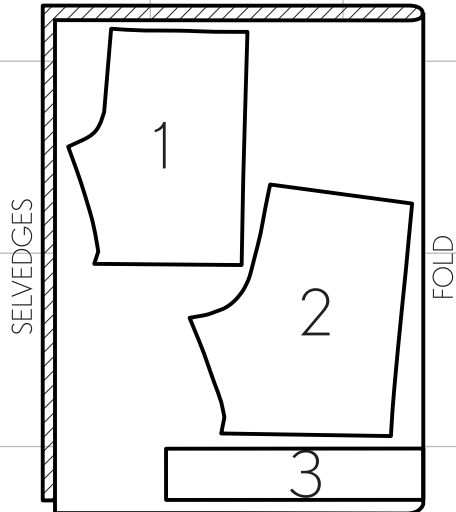


3
A

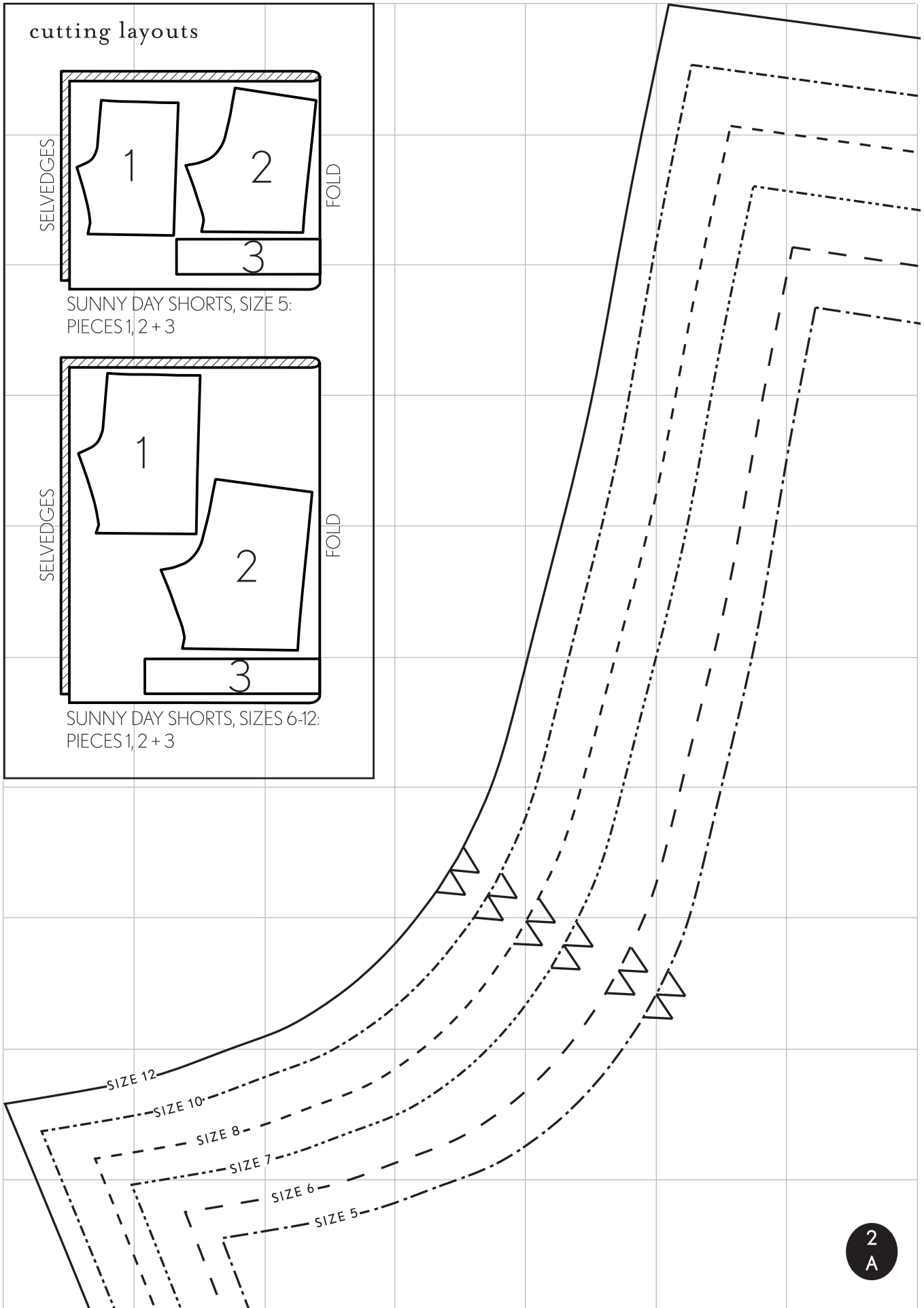
cutting layouts

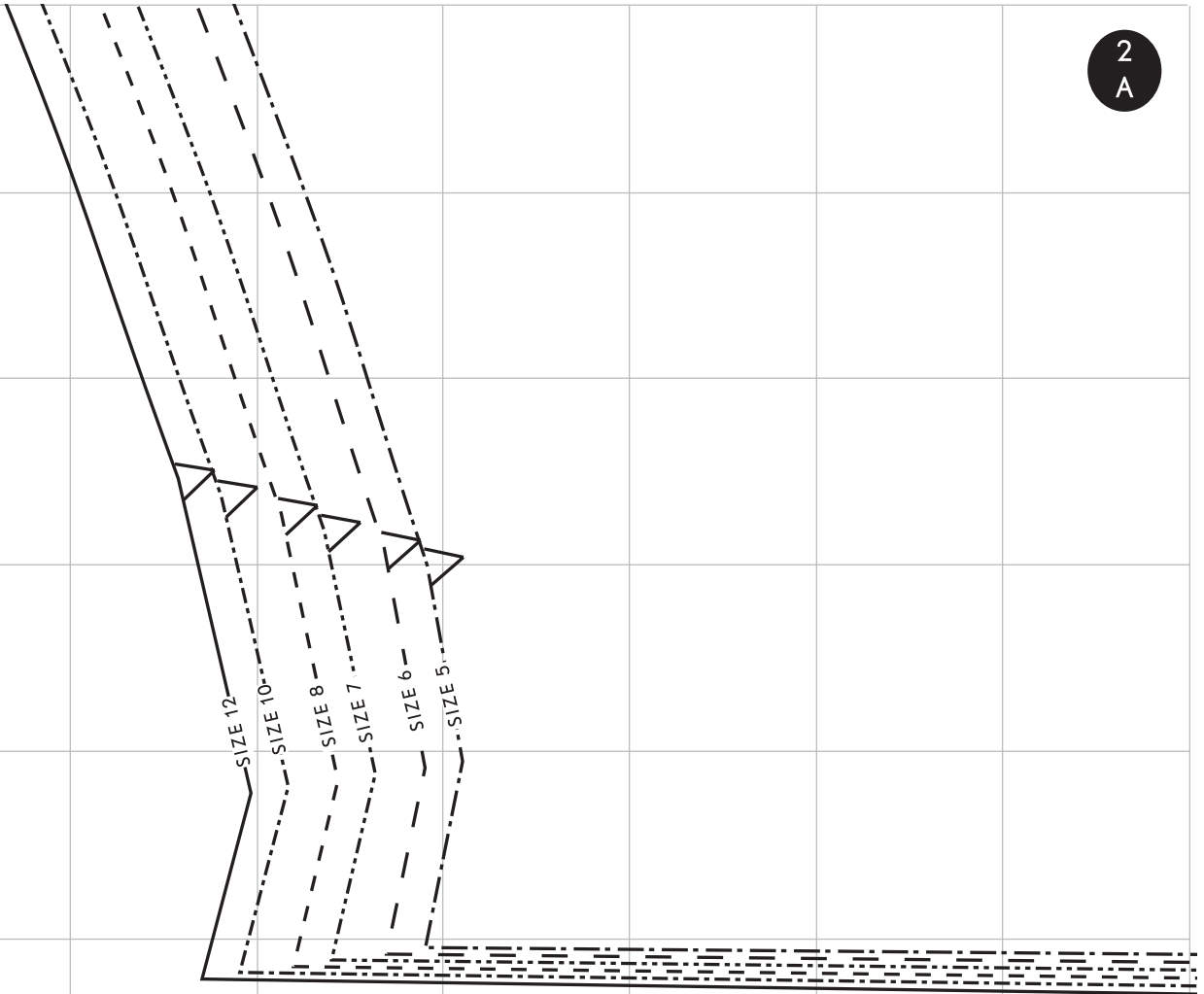


SUNNY DAY SHORTS, SIZE 5:
PIECES 1, 2 + 3



SUNNY DAY SHORTS, SIZES 6-12:
PIECES 1, 2 + 3





PATTERN SYMBOL KEY



grain line of fabric



notches indicate where two pattern pieces are sewn together



buttonhole



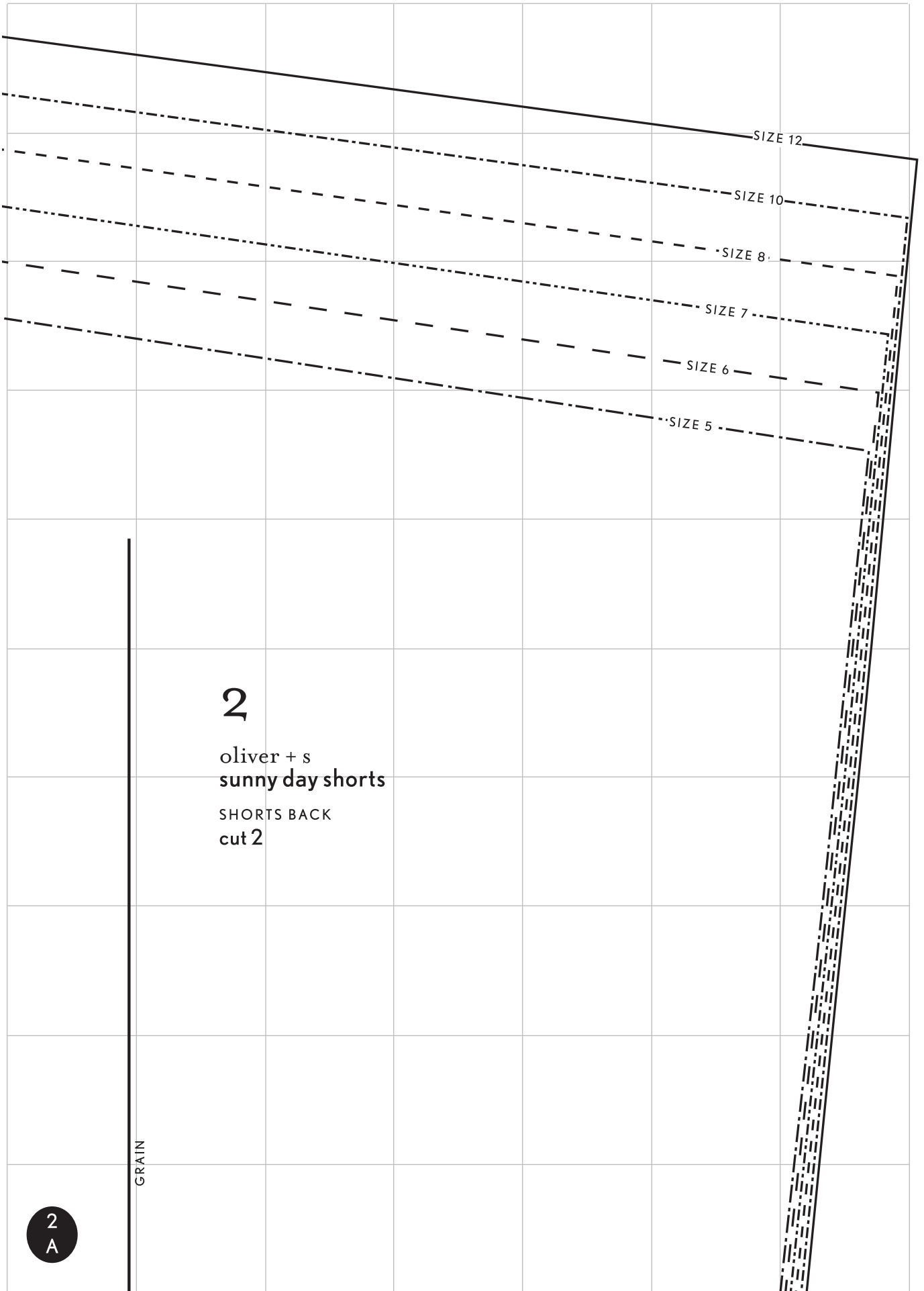
button or snap placement



pivot point or matching point



interfacing



SIZE 12

SIZE 10

SIZE 8

SIZE 7

SIZE 6

SIZE 5

2

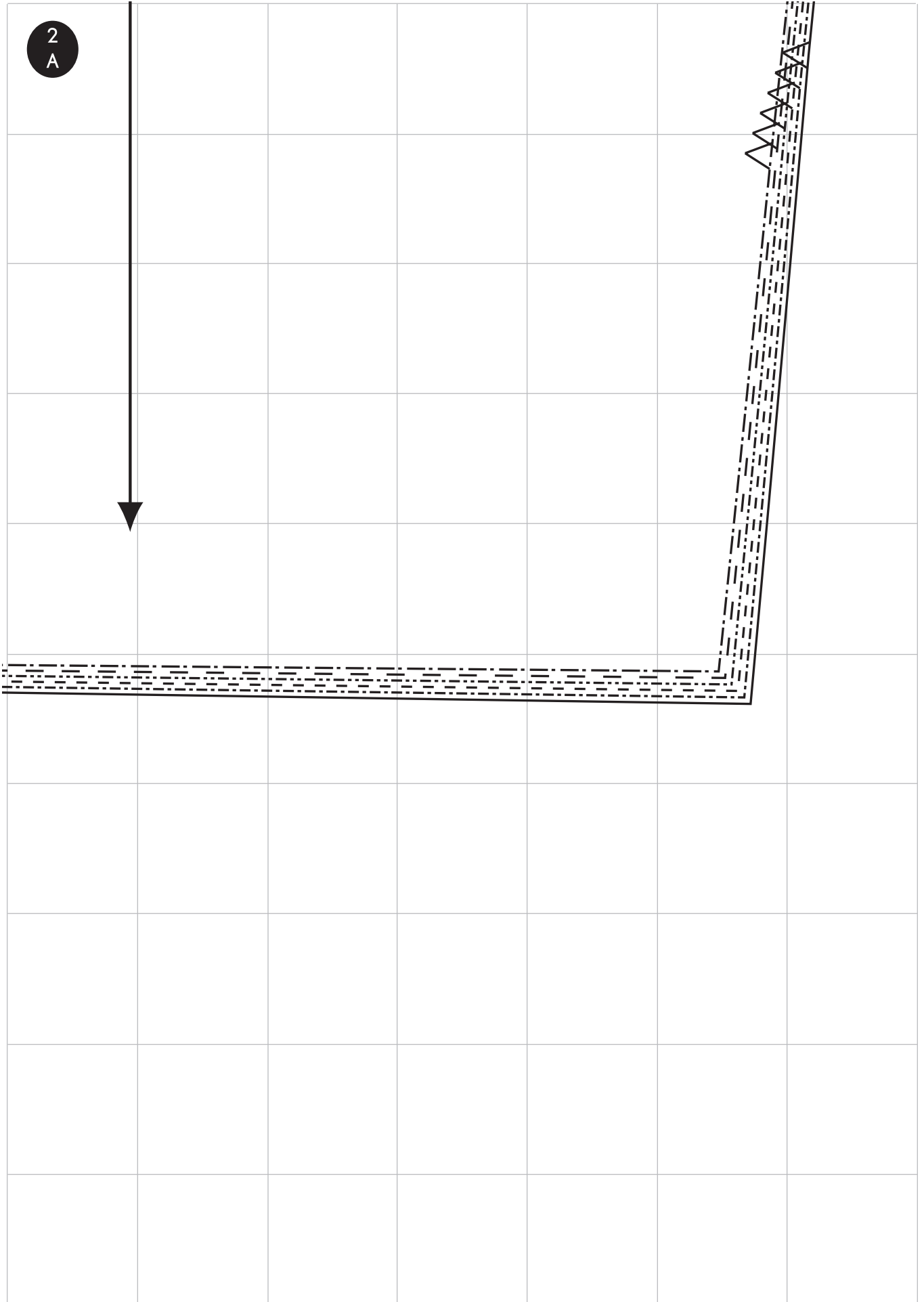
oliver + s
sunny day shorts

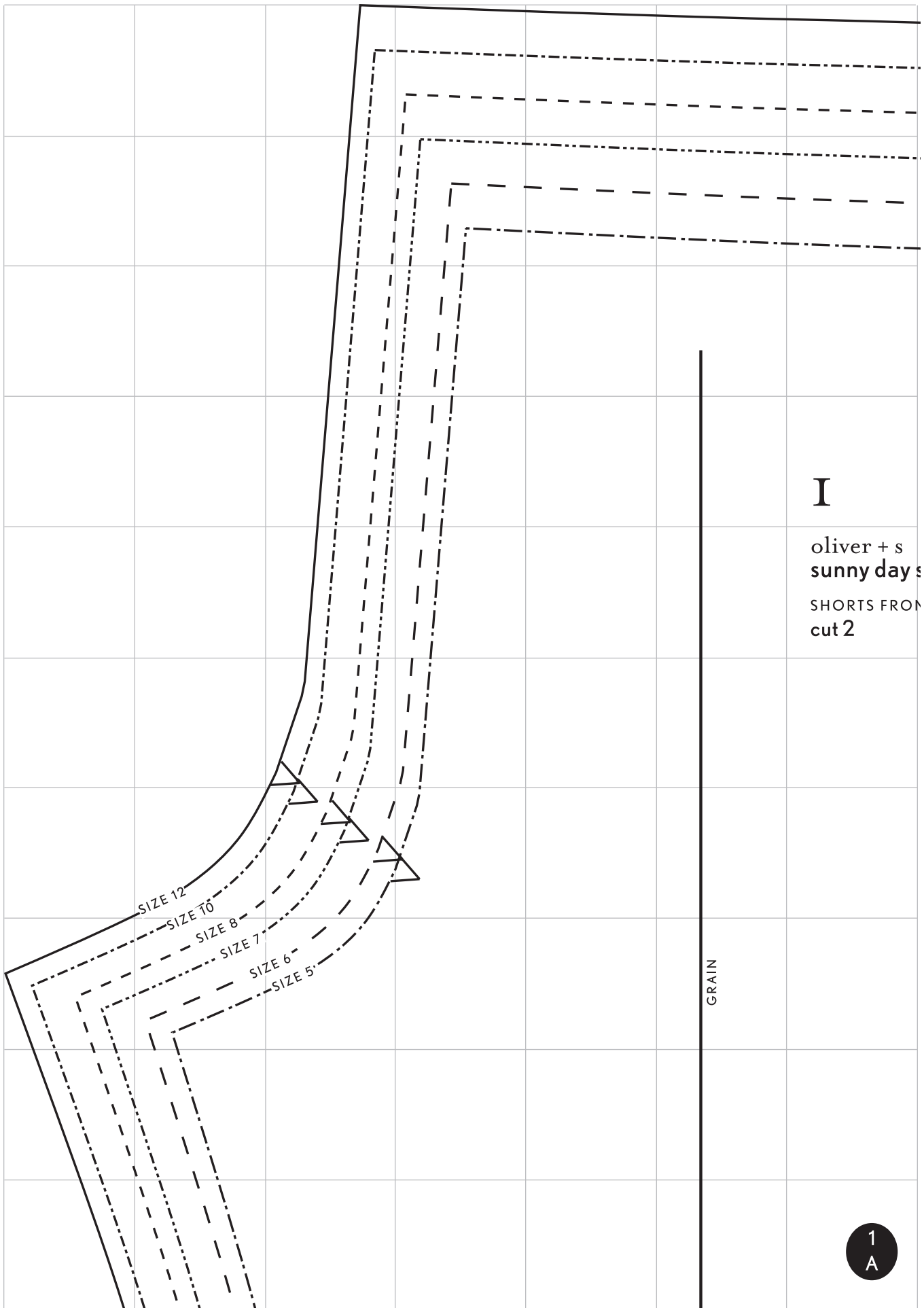
SHORTS BACK
cut 2

GRAIN

2
A

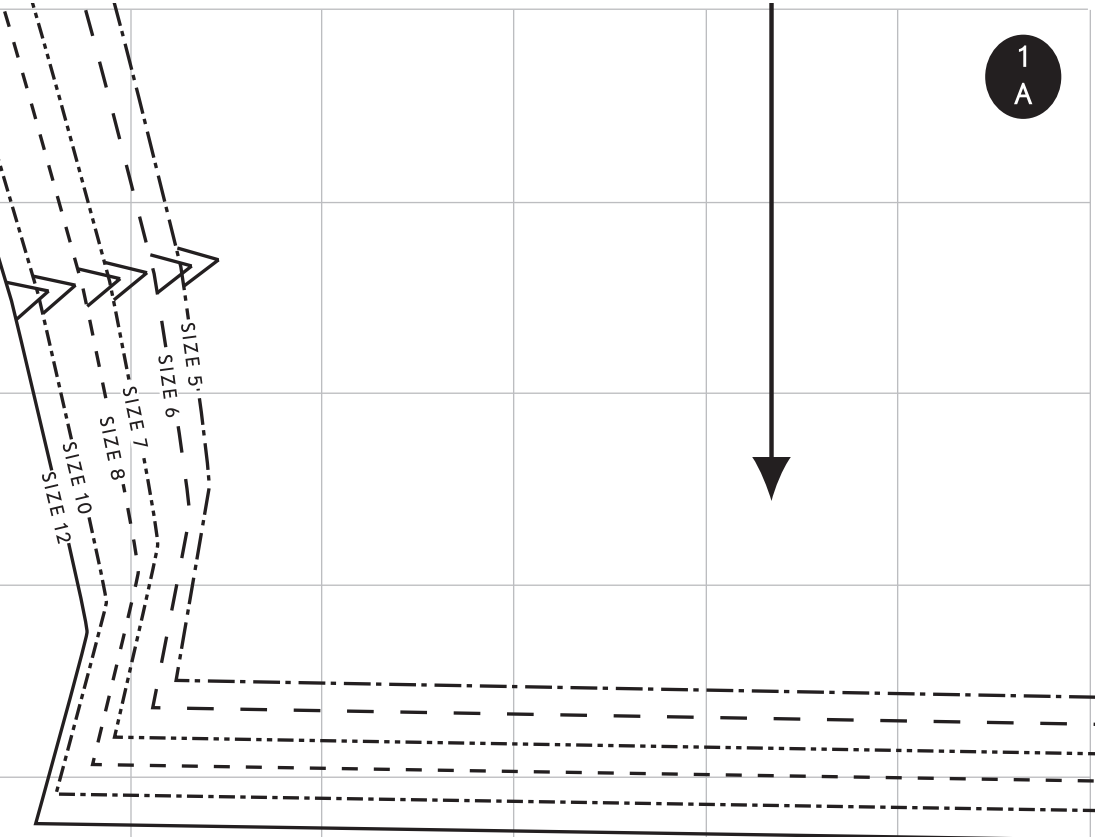
2
A





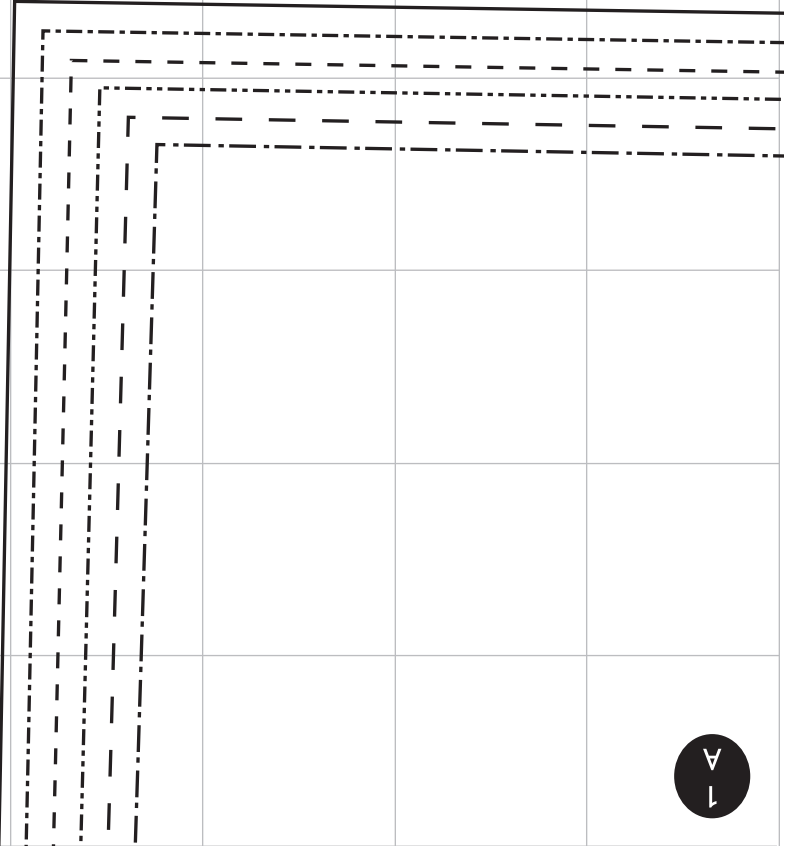
I
oliver + s
sunny days
SHORTS FRONT
cut 2

1
A



SIZE 5
SIZE 6
SIZE 7
SIZE 8
SIZE 10
SIZE 12

1
A



shorts
NT

1
A



SIZE 5
SIZE 6
SIZE 7
SIZE 8
SIZE 10
SIZE 12

