

Blouse

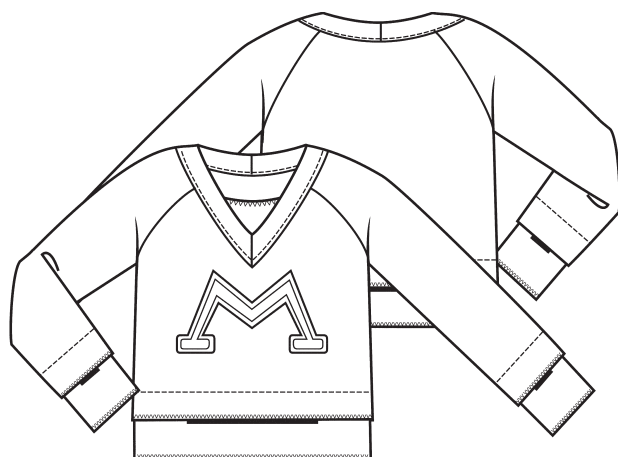
Sizes: 34(36)38(40)42(44)46
Center back length is 59 cm.

Materials: Sweatshirt fabric 1,15(1,15)1,15(1,15)1,20(1,20)1,20 m plain color and 0,35 m striped, both 145 cm wide. Iron-on interfacing. Red jersey, white cotton and fusible web.

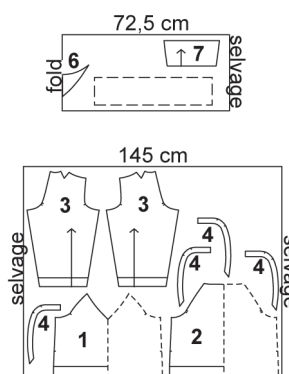
Preparation: Trace the hem on front and back pieces to marked line. If you cut the pieces from single layer, trace the other halves of the front and back pieces to the other side of the center lines to make whole patterns.

Cutting out: See pattern layout, add 1 cm seam allowances. Cut cuffs, cuff band's lower edges, hem and front triangle's upper edge without seam allowances. Cut two hem bands 12 x 50(51,5)53(55)57(60)63 cm (seam allowances included). Interfacing: Cut and iron strips of interfacing on the wrong sides of the inner neckline pieces.

Letter: Trace the smaller letter as a mirror image following the inner line on the paper side of the fusible web. Attach the fusible web to red jersey and cut the letter out. Trace the bigger letter as a mirror image following the outer line on the paper side of the fusible web and the white cotton. Cut the letter out. Stitch the white letter on front piece and the red letter on white letter. Zig-zag the edges if you want to.

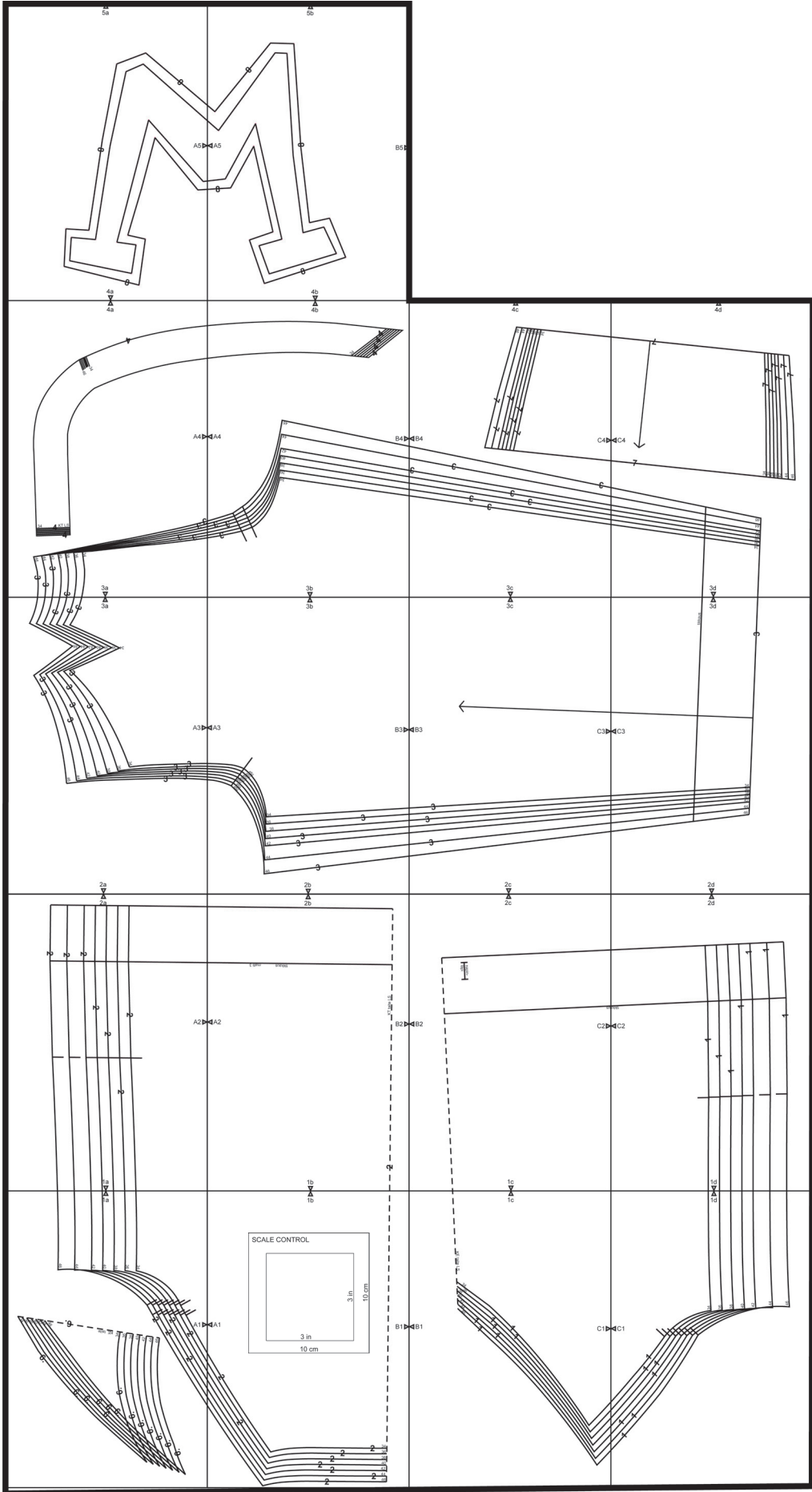


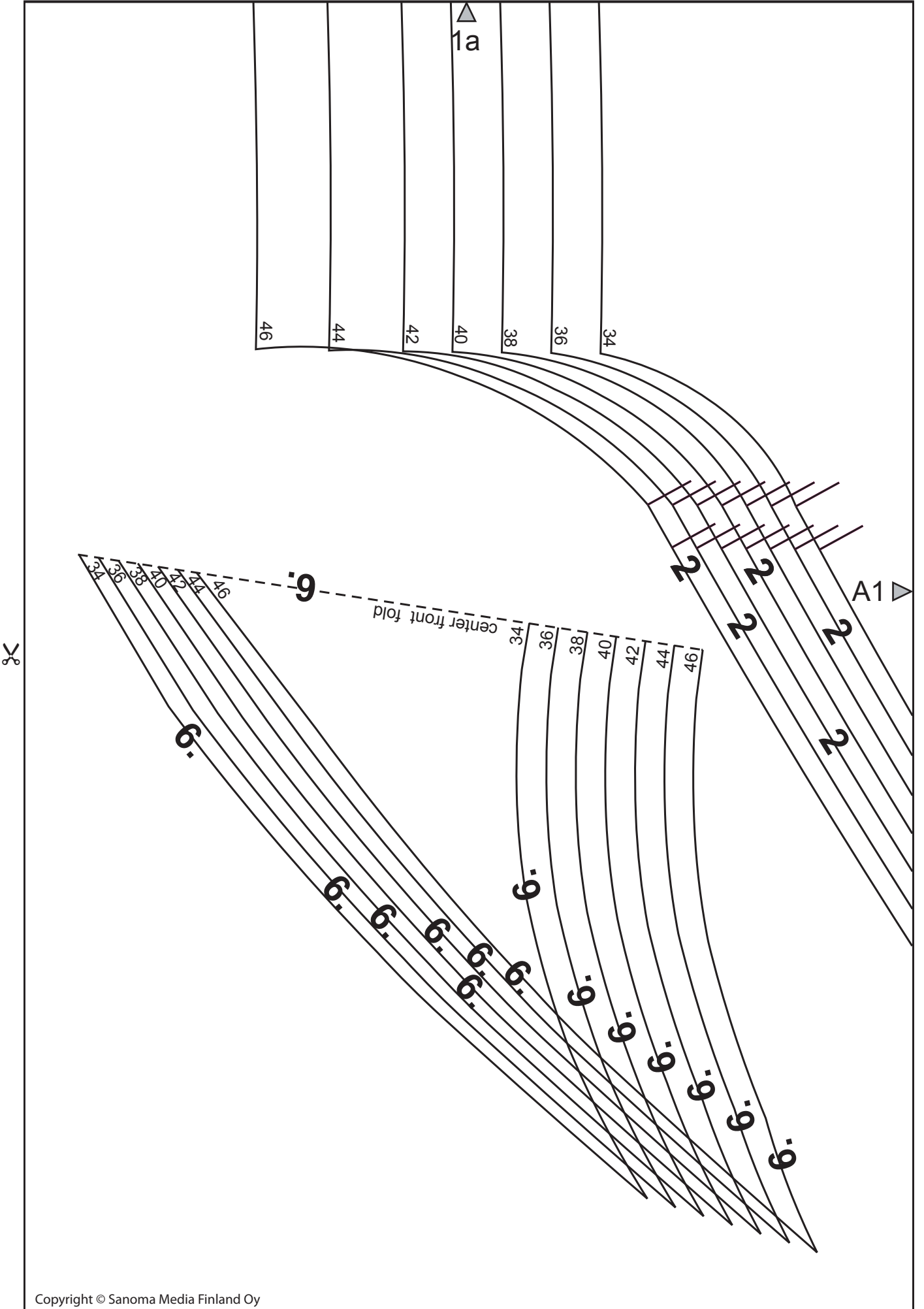
- 1 front
- 2 back
- 3 sleeve
- 4 neckline piece
- 6 front triangle
- 7 cuff band
- 8 letter

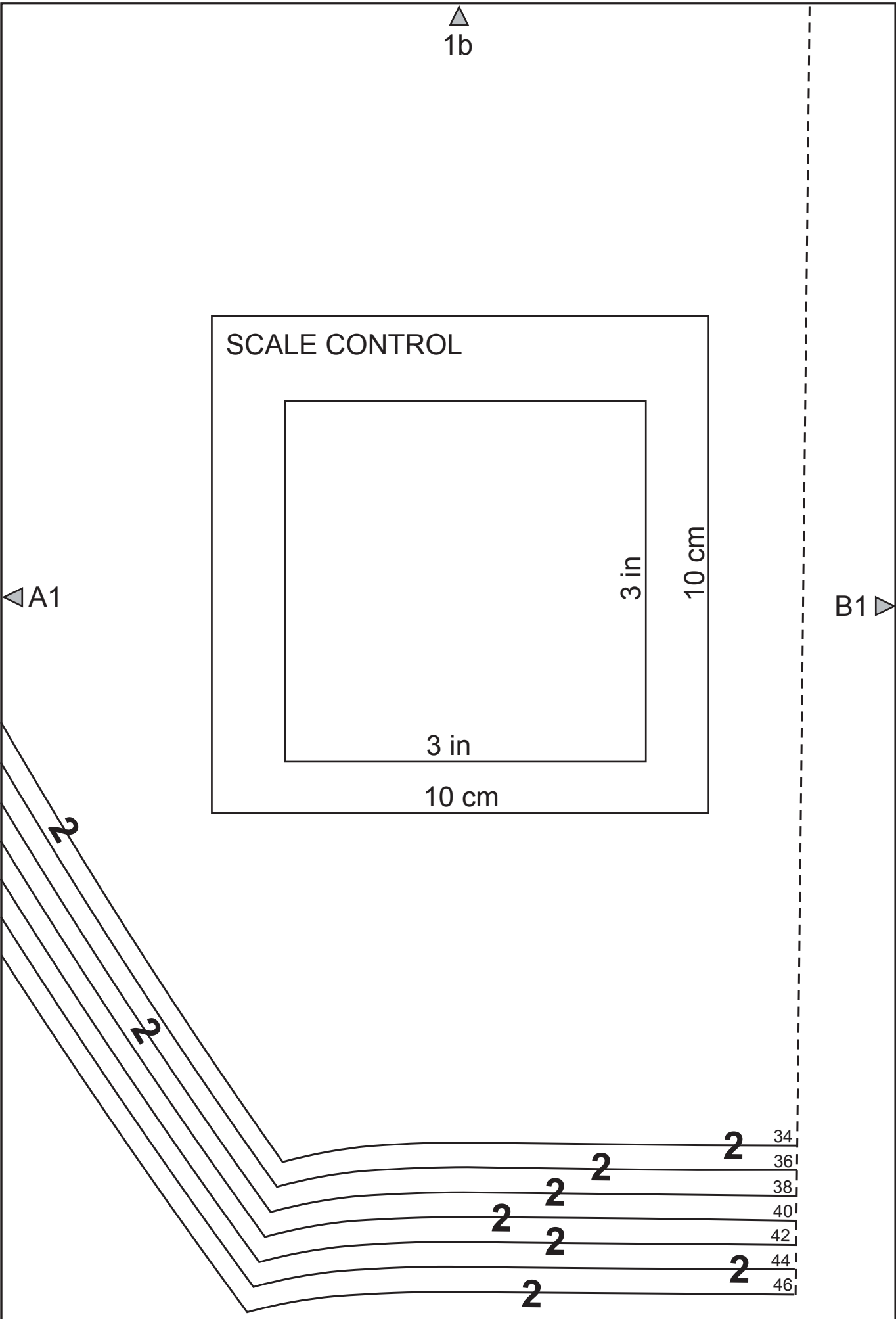


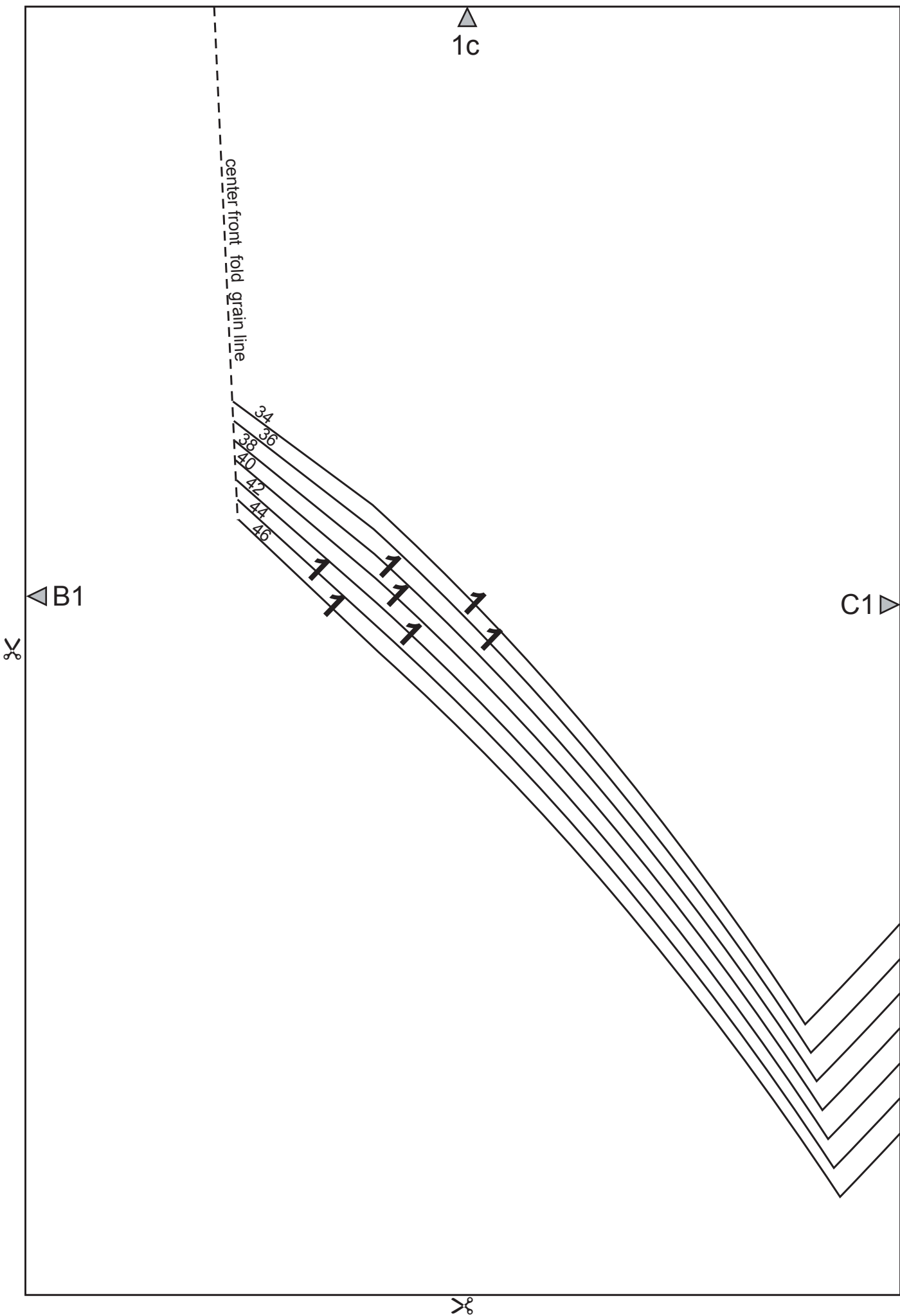
Construction:

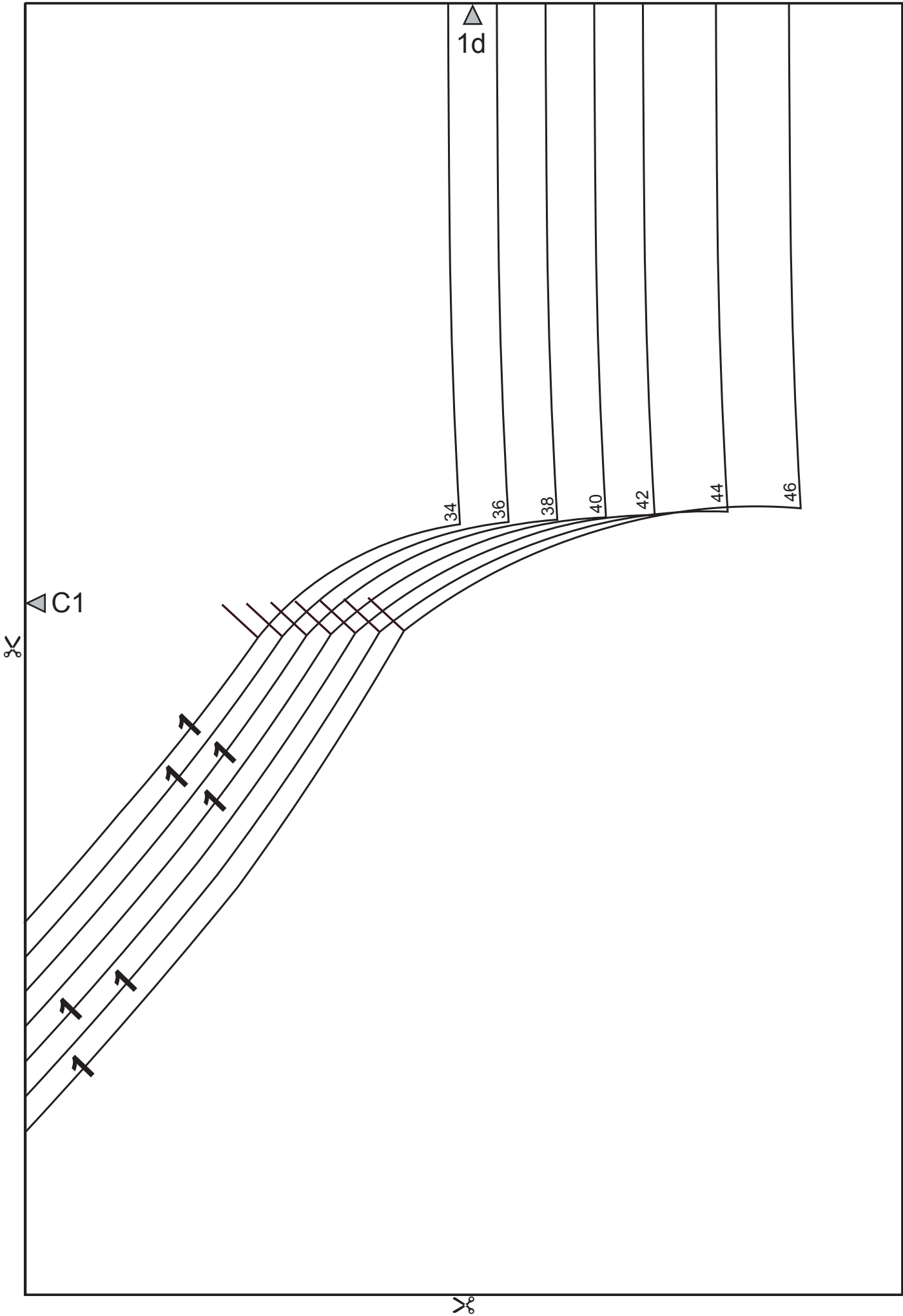
1. Stitch sleeve darts. Sew sleeves on front and back pieces.
2. Sew center front and back seams from outer and inner neckline pieces separately. Sew the outer piece on the neckline, right sides facing. Ease the seams on center front and back. Stitch the outer and inner neckline pieces together from the outer edge, right sides facing. Ease the seams. Turn the inner neckline piece to the wrong side. Baste the piece on place.
3. Finish the upper edge of the triangle with overlock or zig-zag. Set the triangle under the neckline, right side up. Stitch the triangle on place.
4. Finish the hem, cuffs and lower edges of the cuff bands and hem bands with overlock or zig-zag. Place cuff bands on cuffs and hem bands on front and back hems. Stitch the bands on place from the wrong side as marked.
5. Stitch sleeve and side seams.

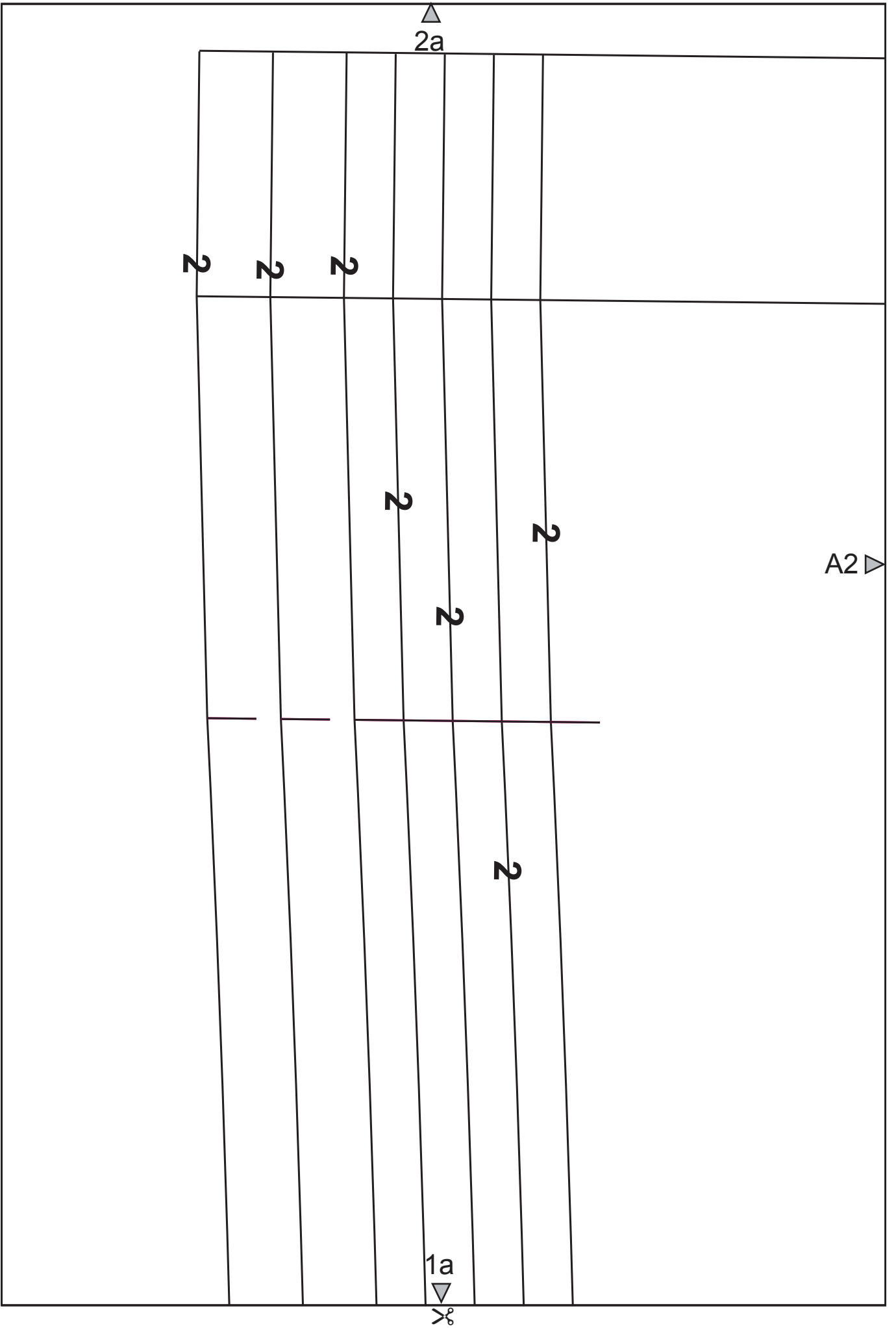


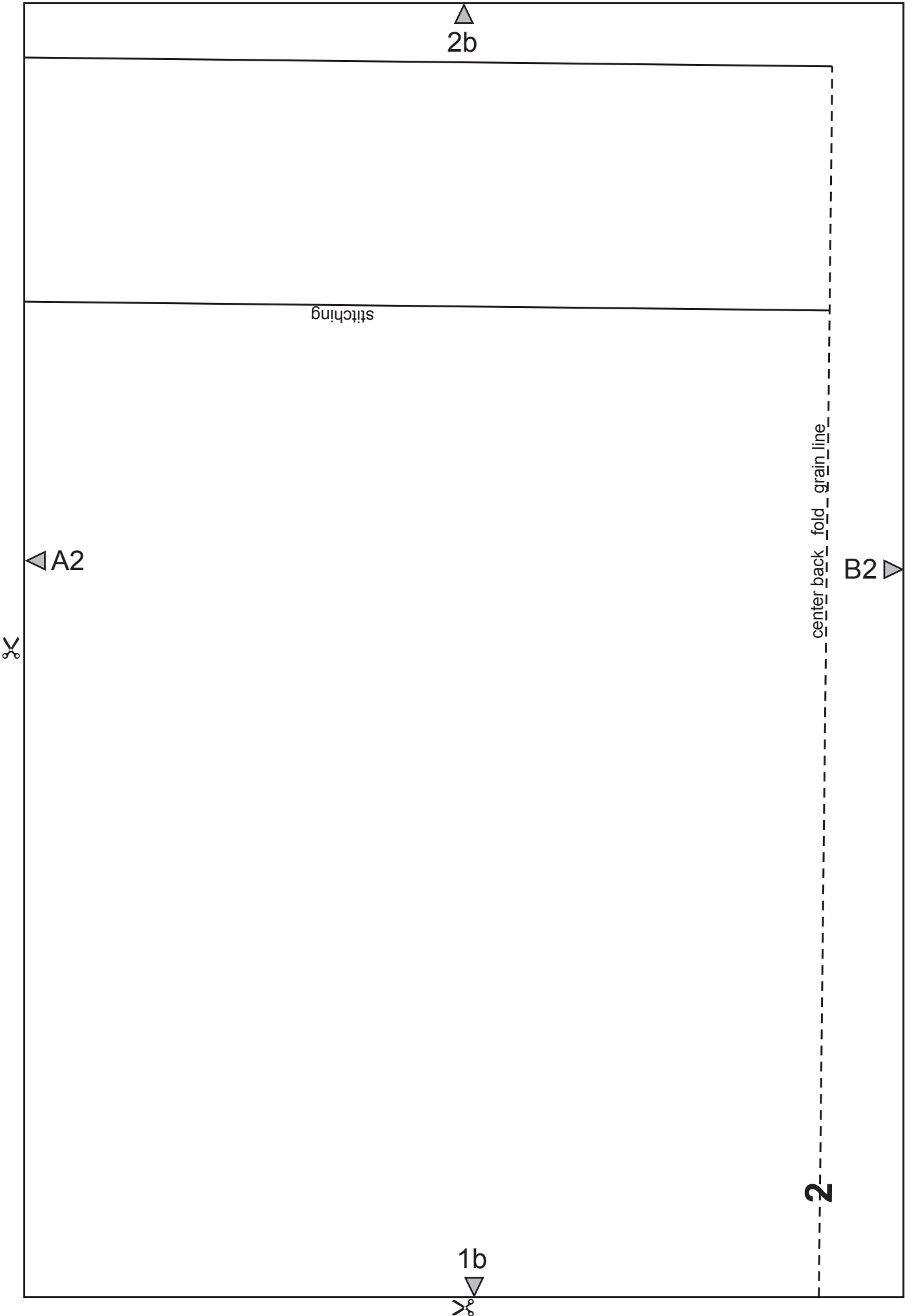


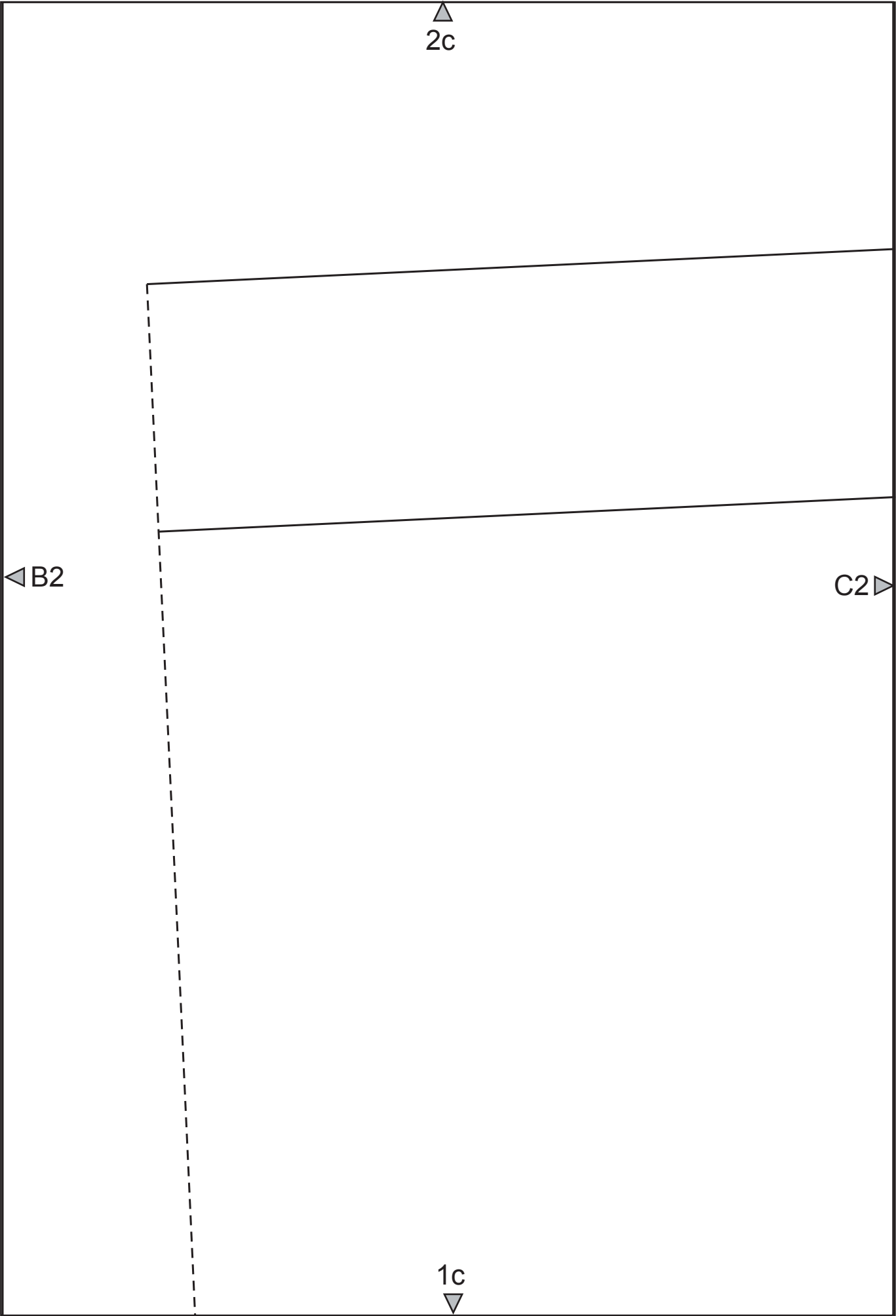


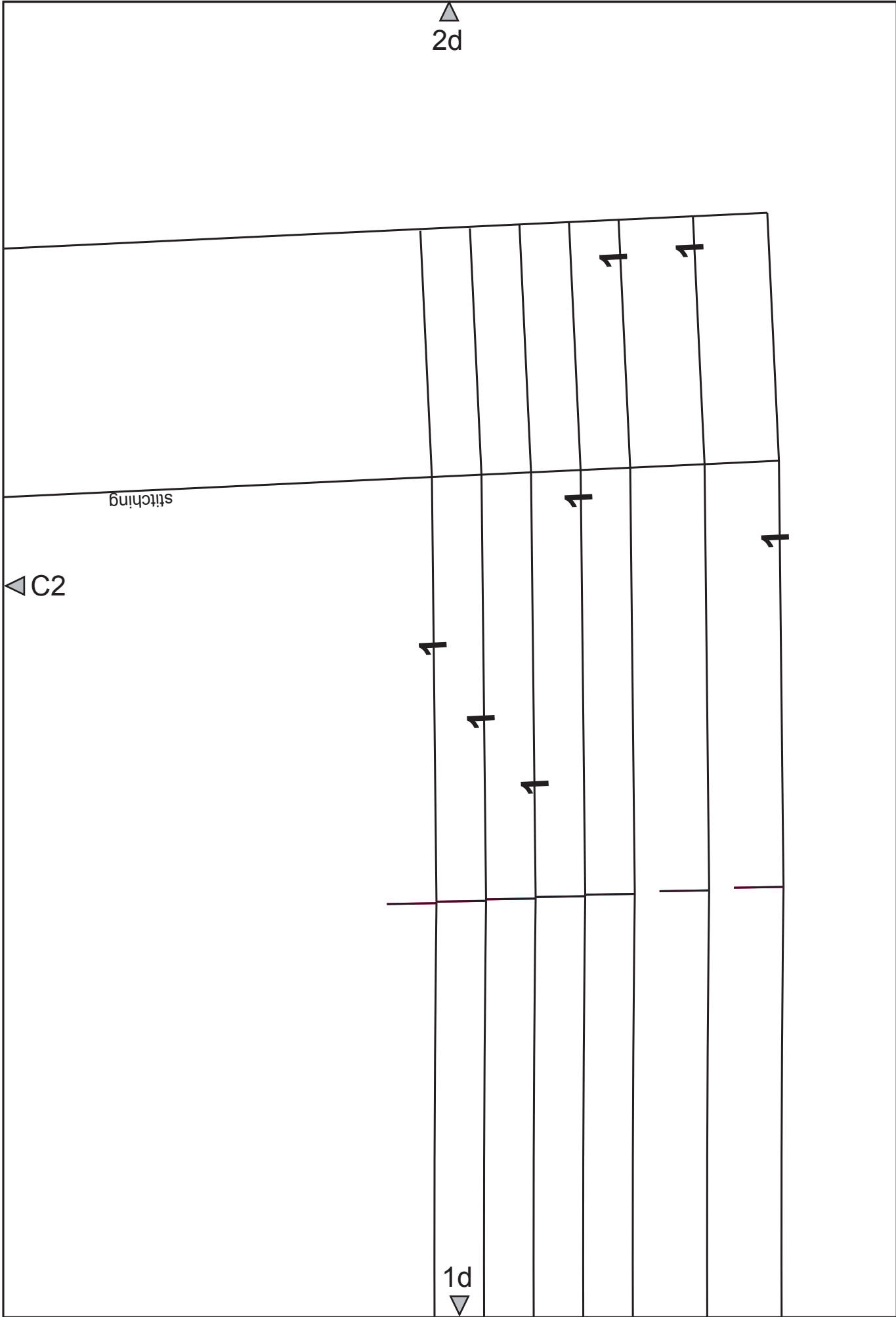


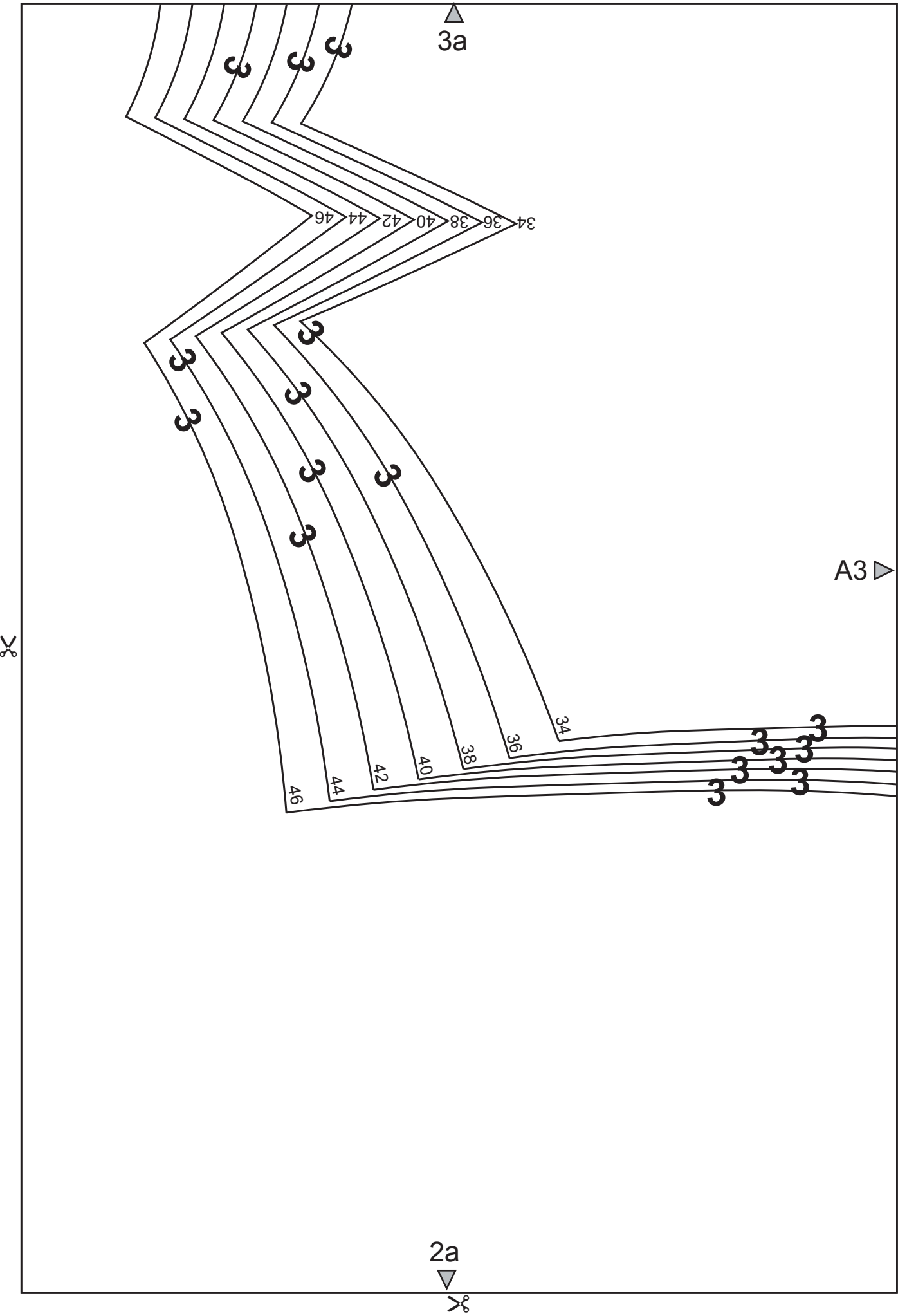












3b

A3

B3



front

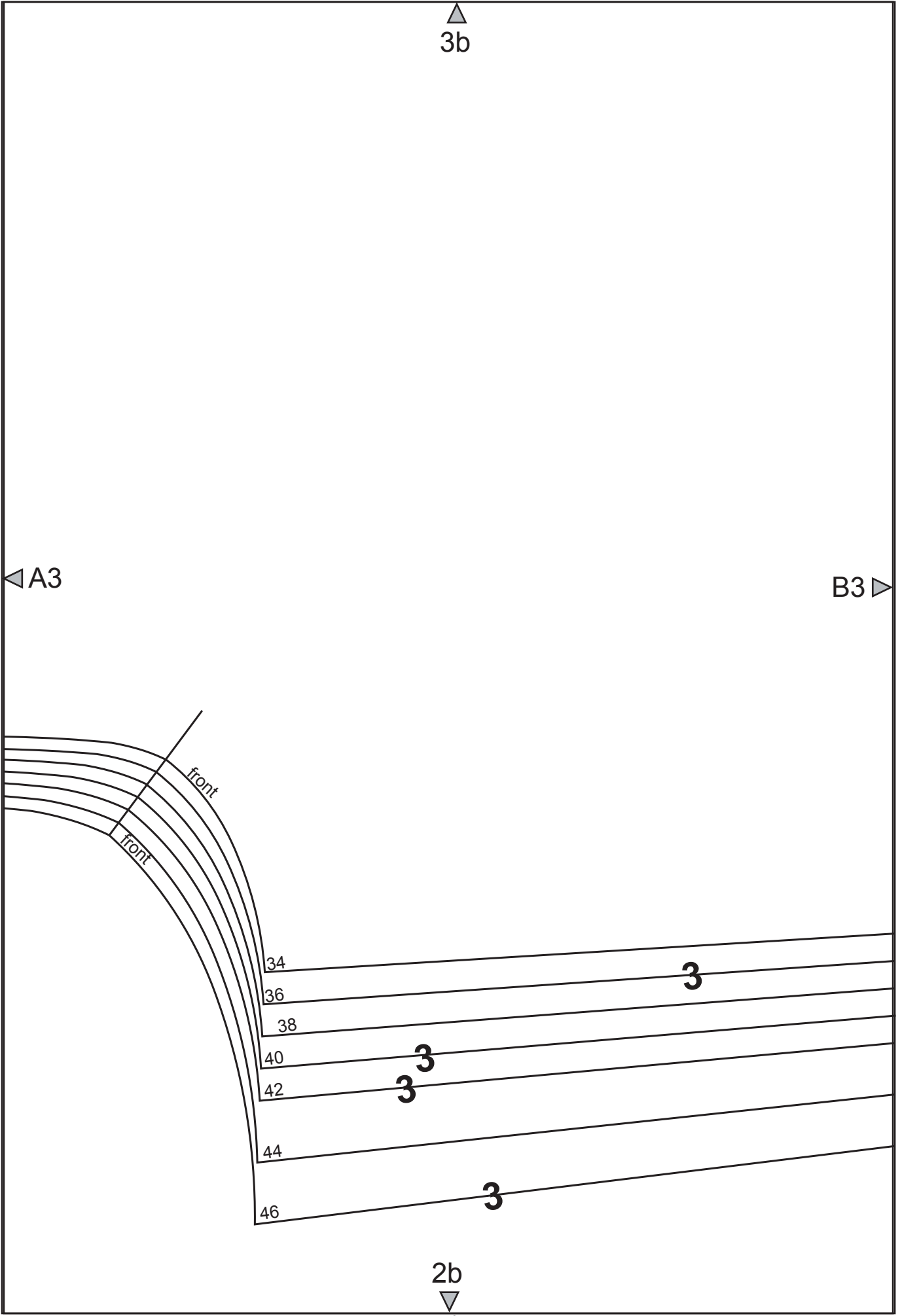
34
36
38
40
42
44
46

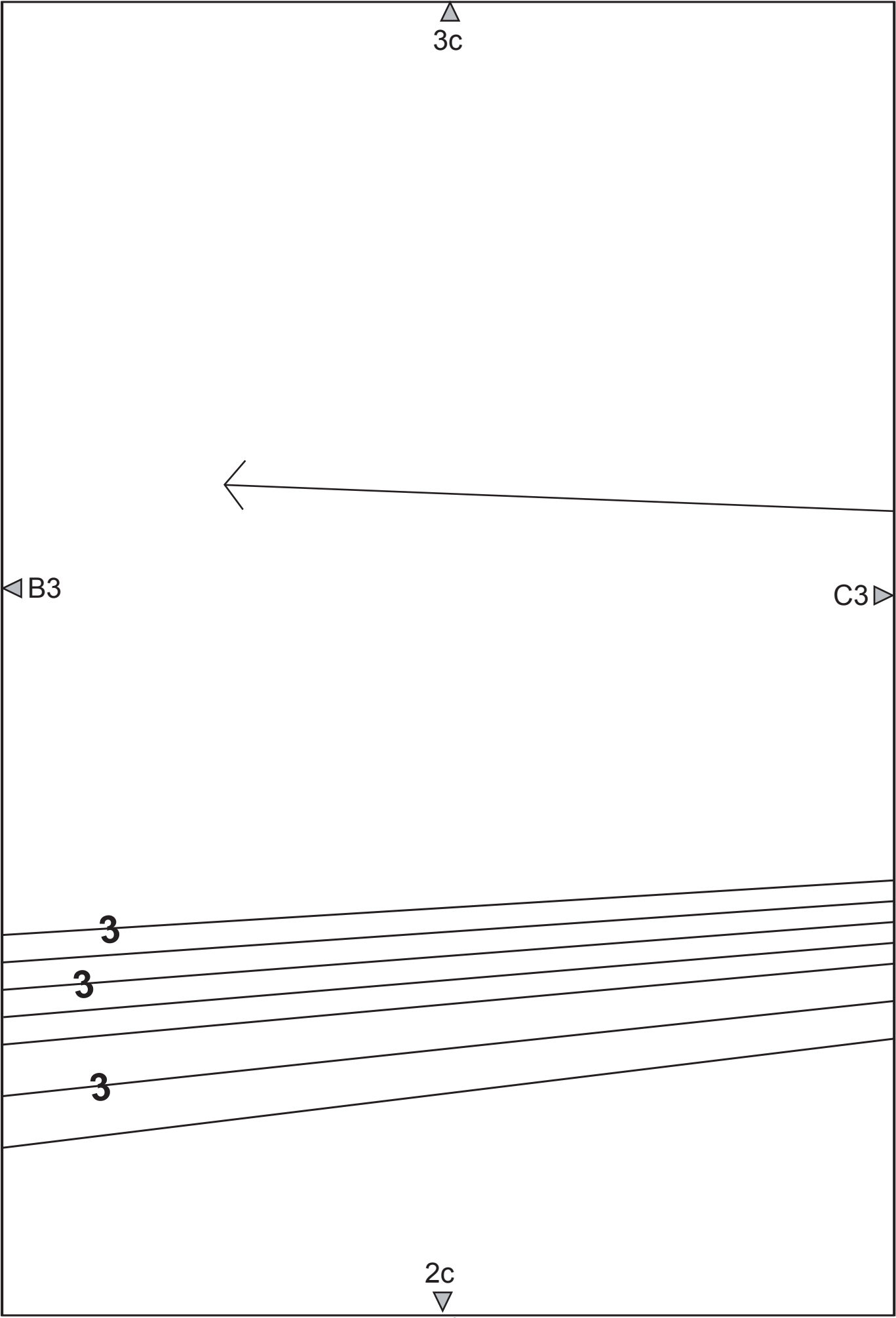
3

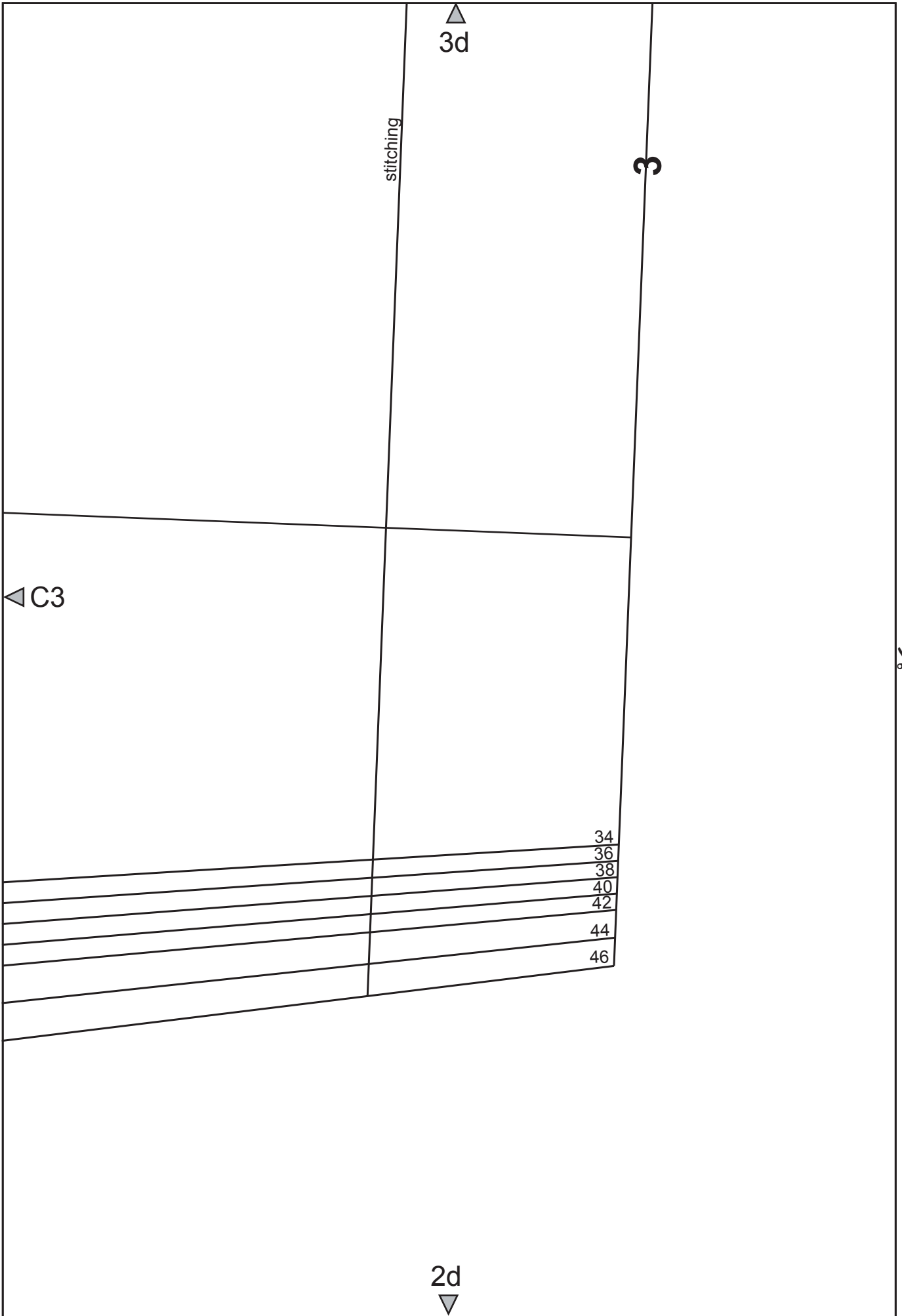
3

3

2b







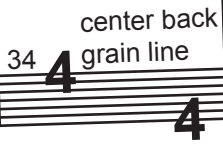
4a



34

46

A4

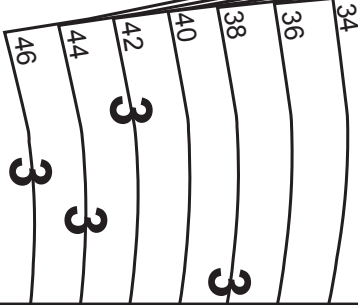


center back
grain line

34

4

4



46

44

42

40

38

36

34

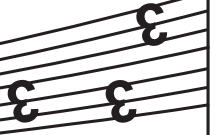
3

3

3

3

3a

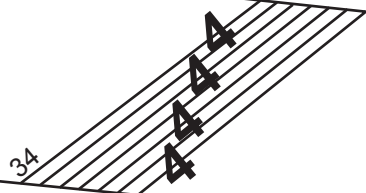


3

3

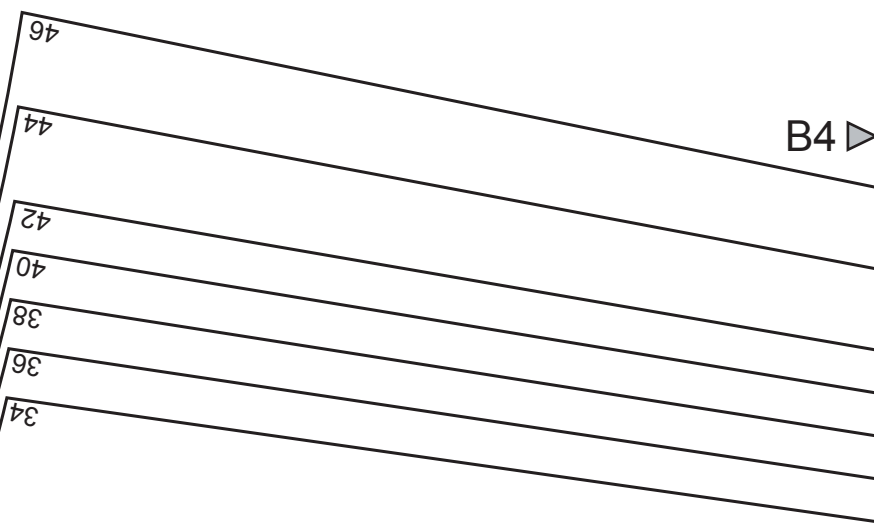
3

4b

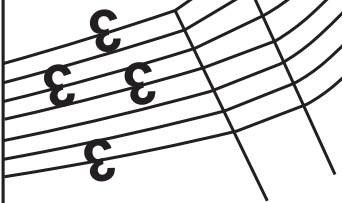


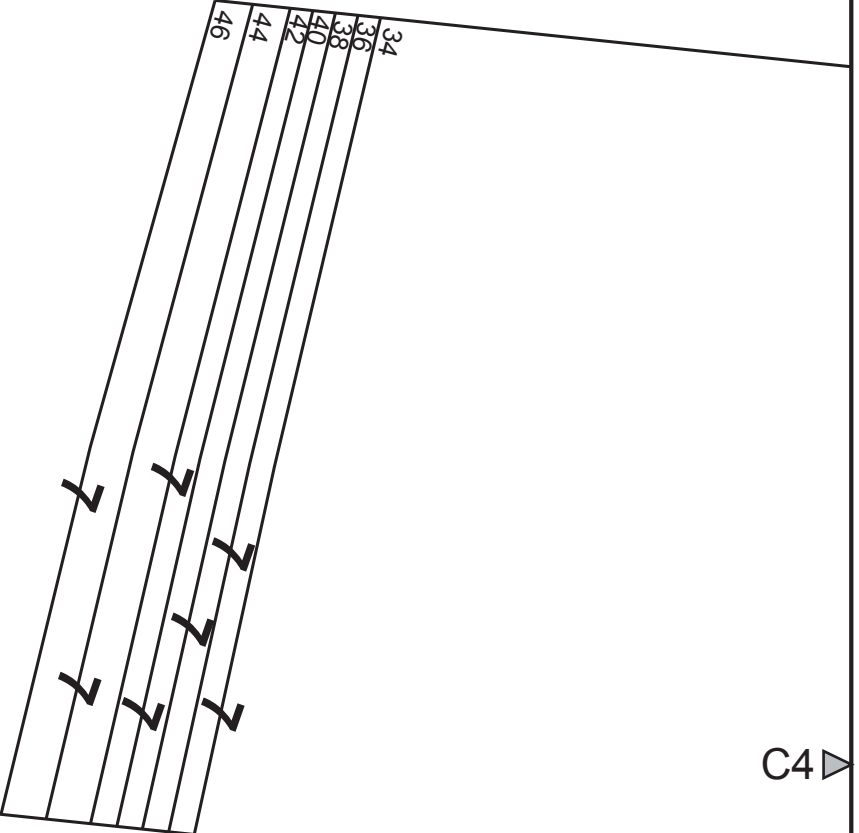
B4

3b



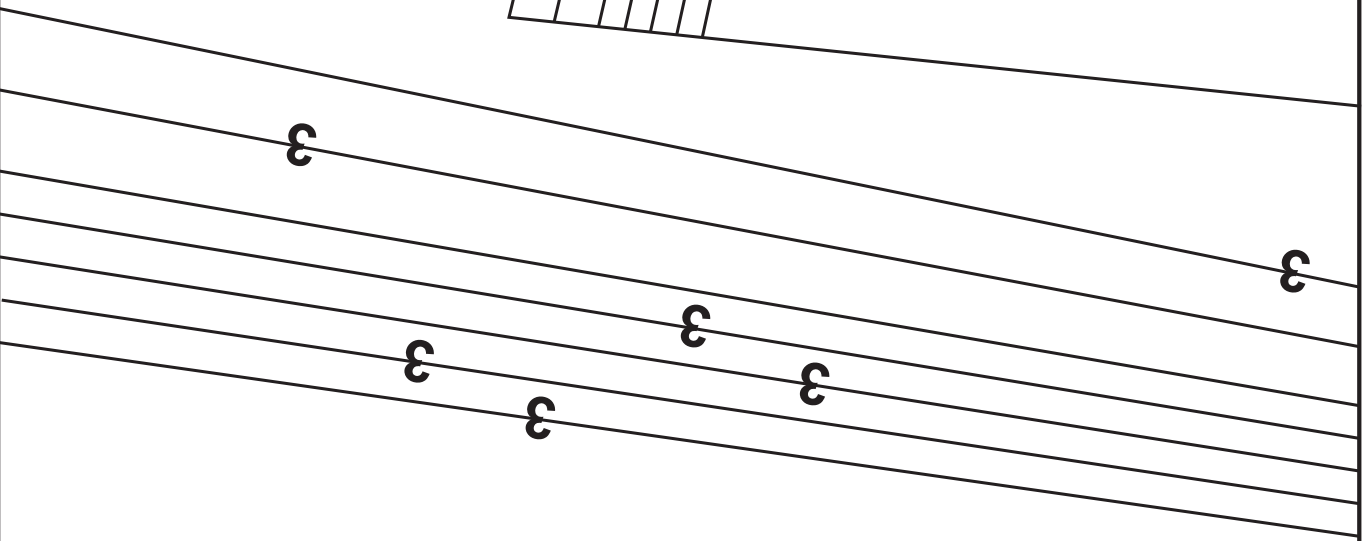
A4





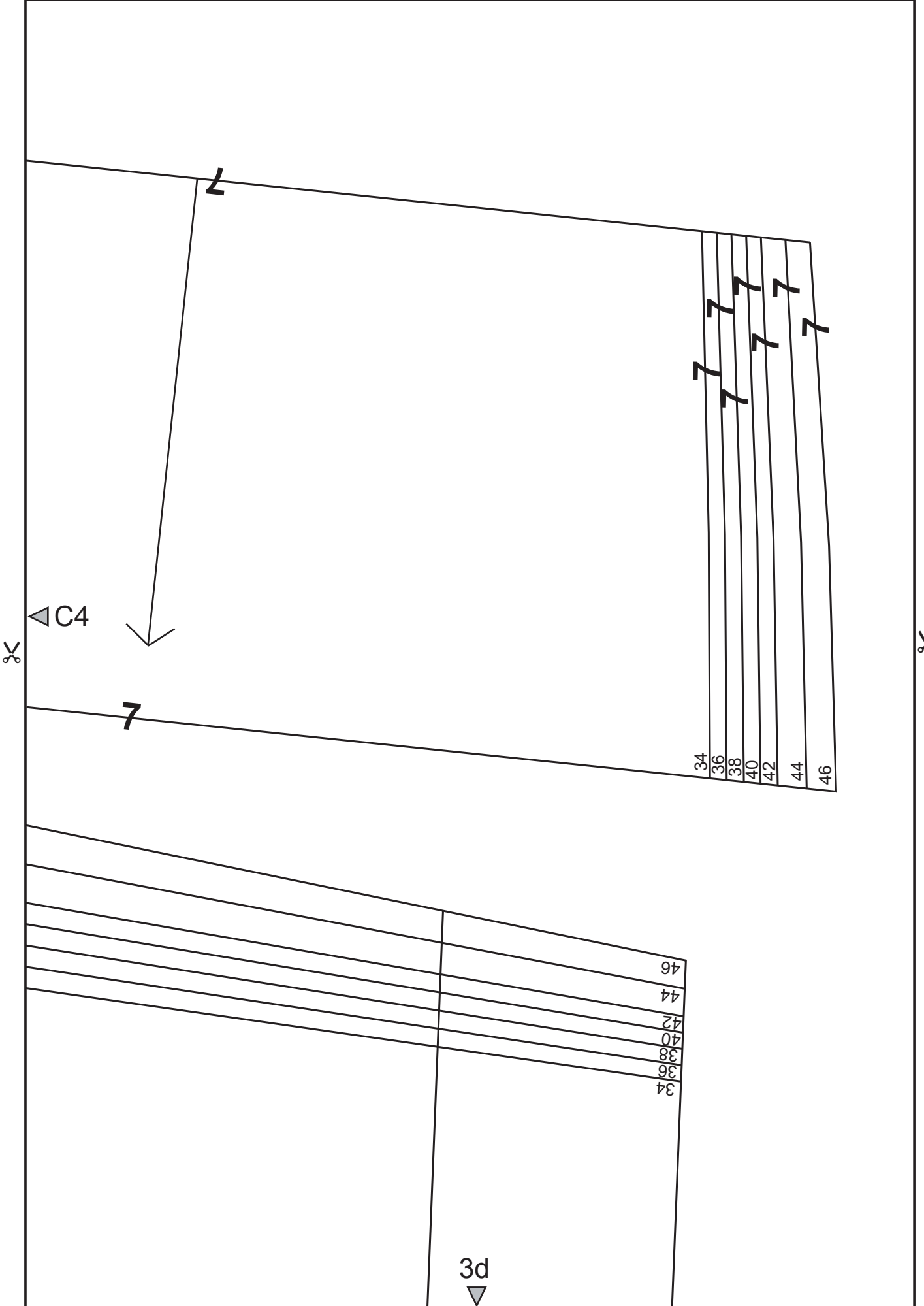
B4

C4



3c





✂
C4

7

34
36
38
40
42
44
46



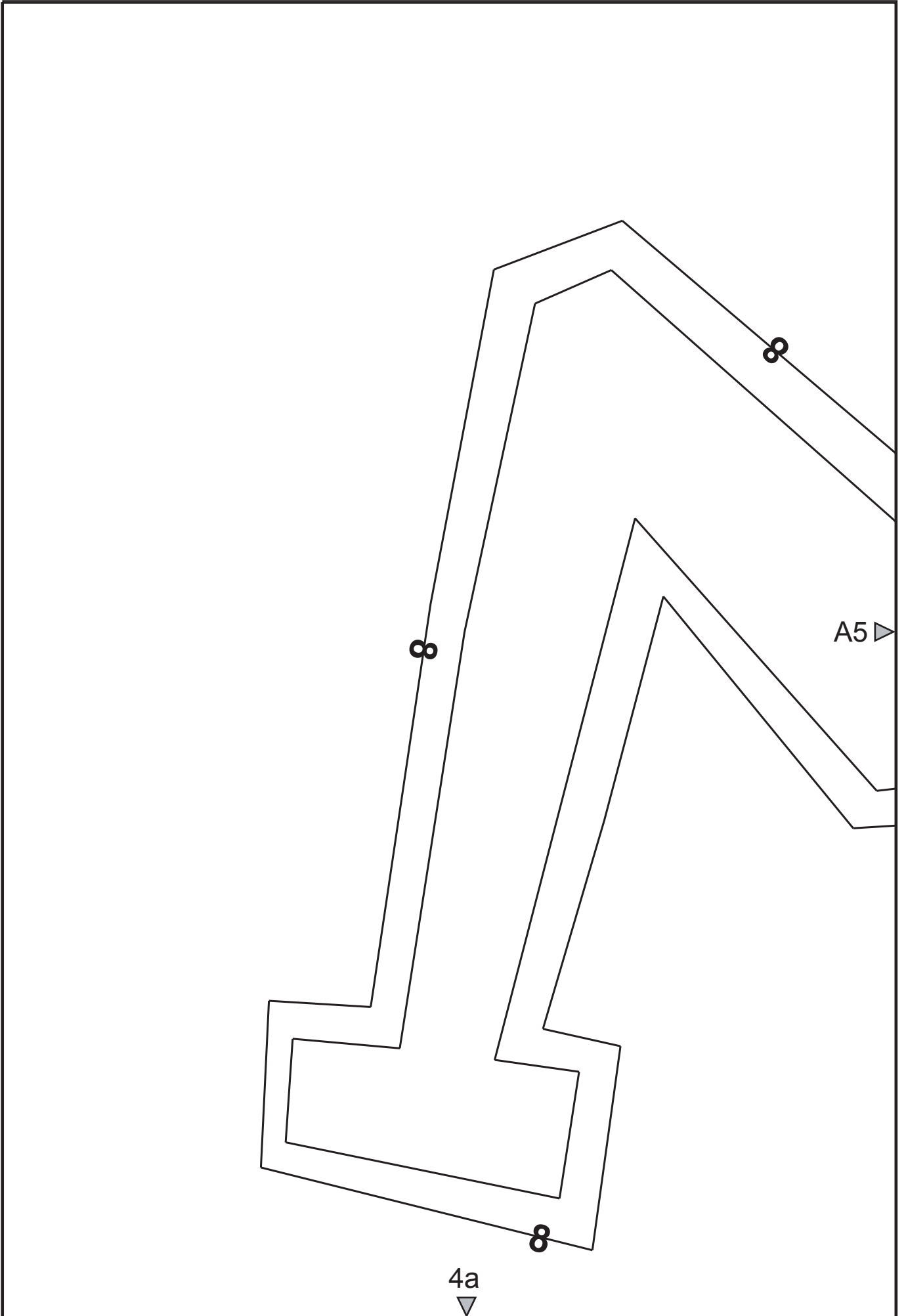
3d
▼
✂

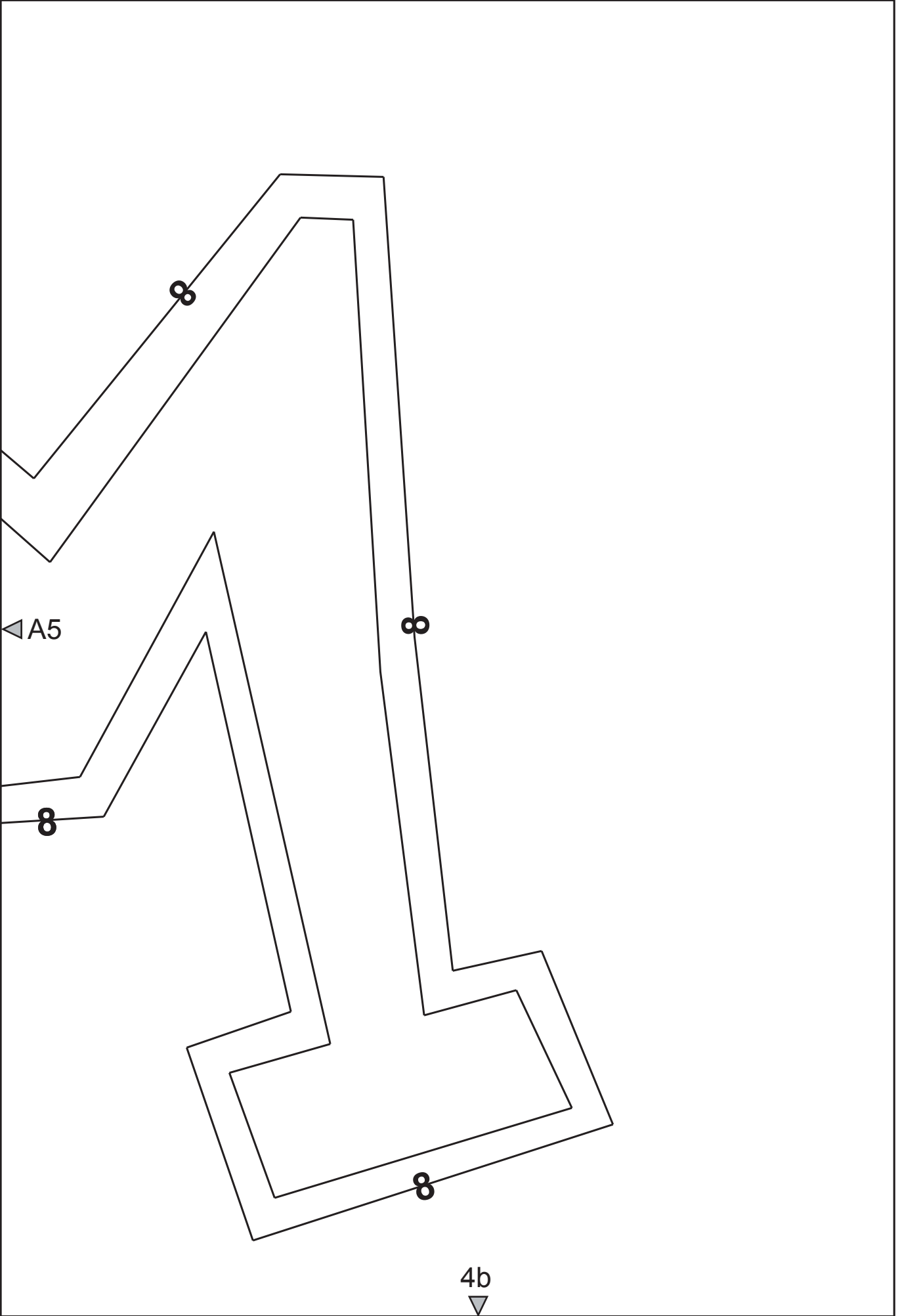


A5 

8

4a 





✂ A5

8

8

8

4b

