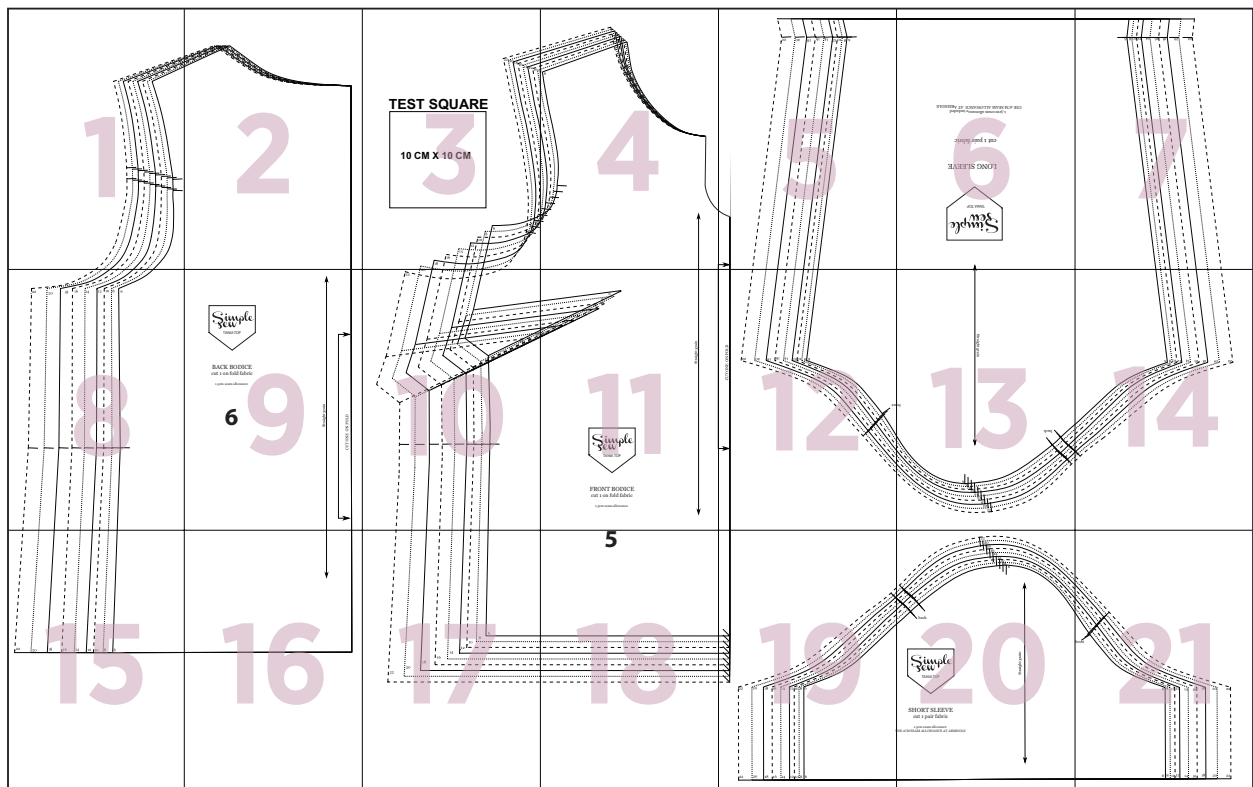
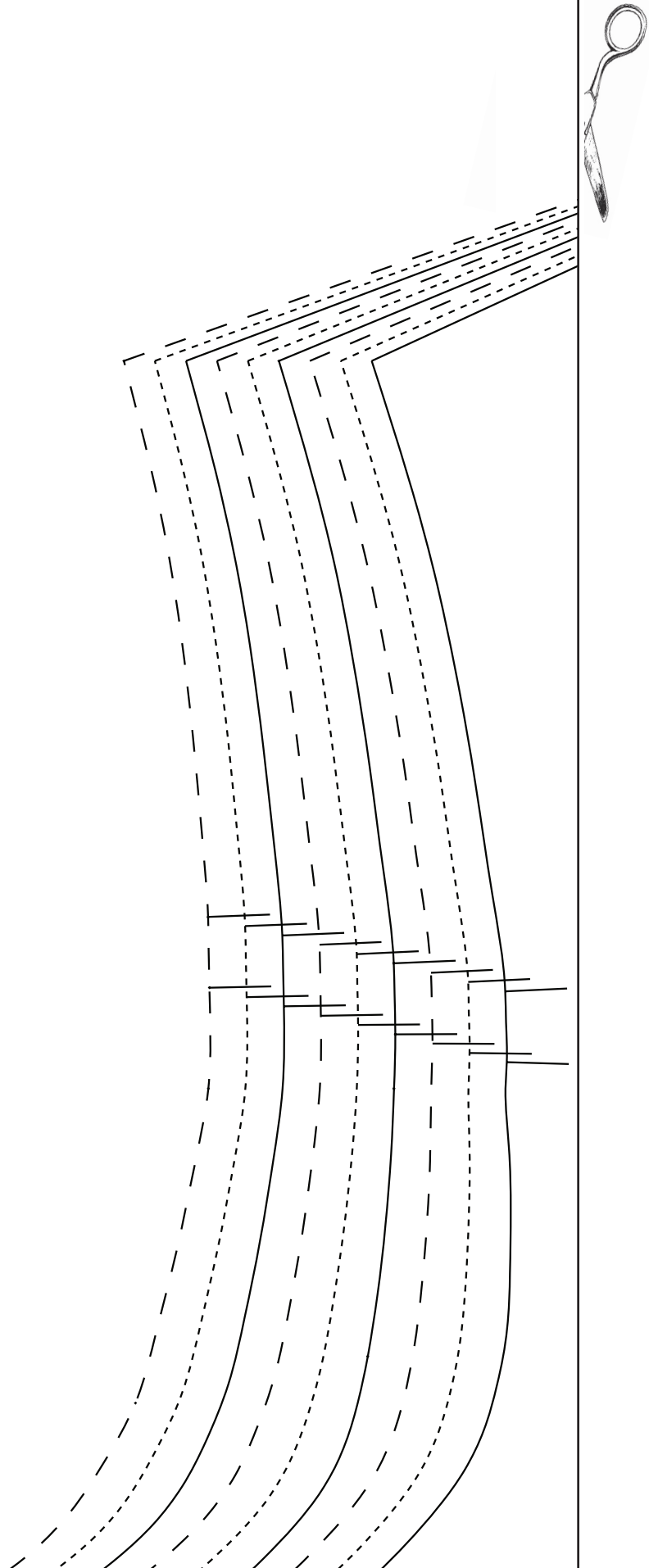


love
Sewing
TEMPLATES

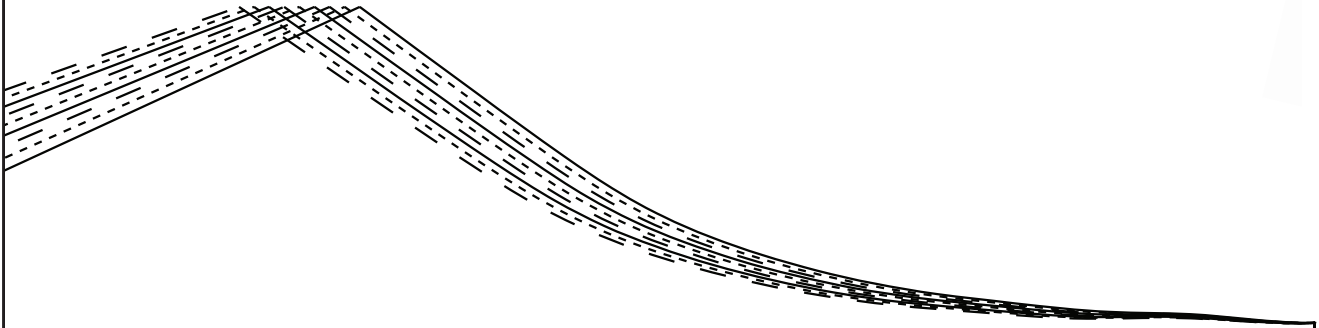
TANIA TOP



1



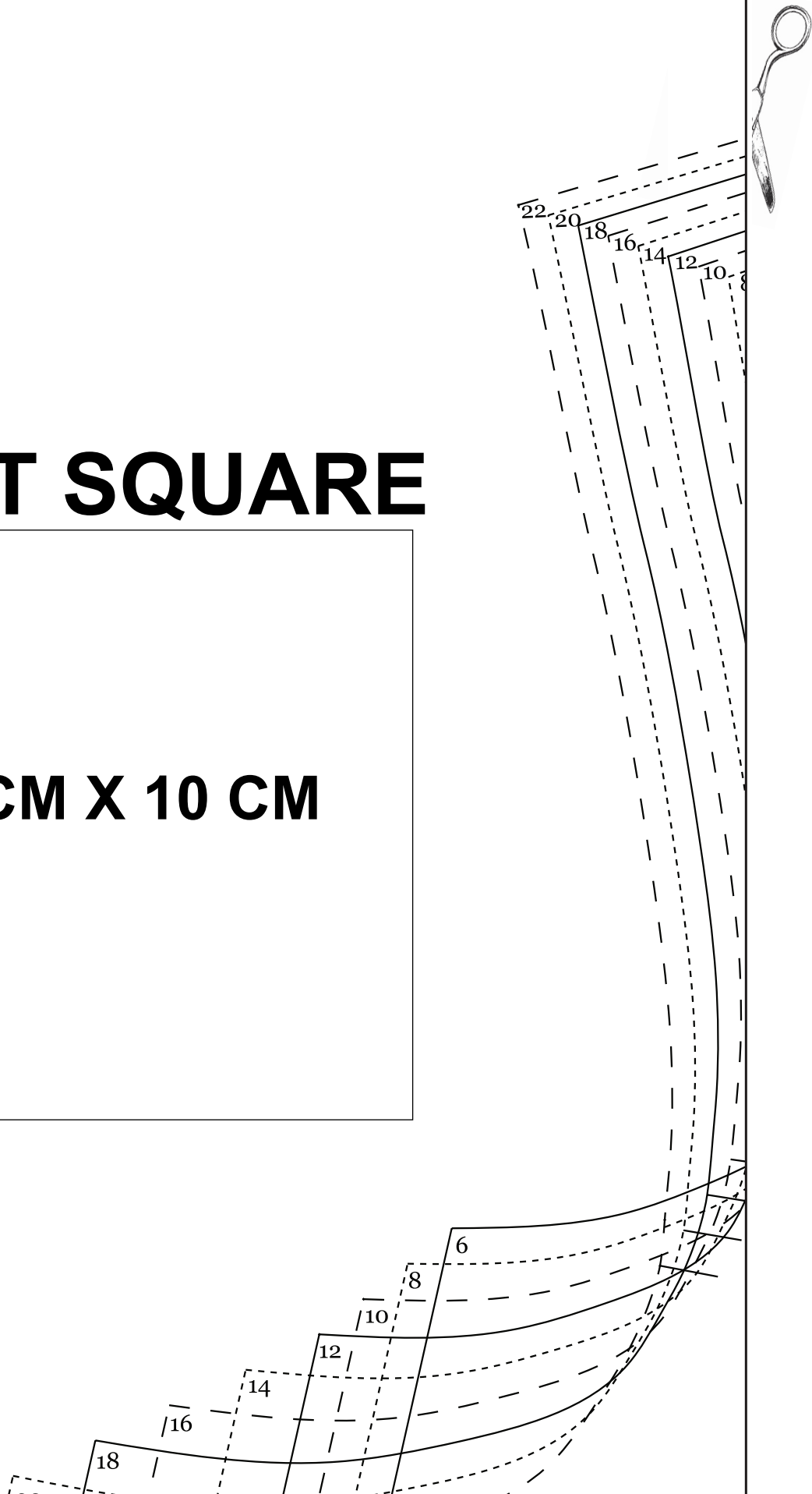
2



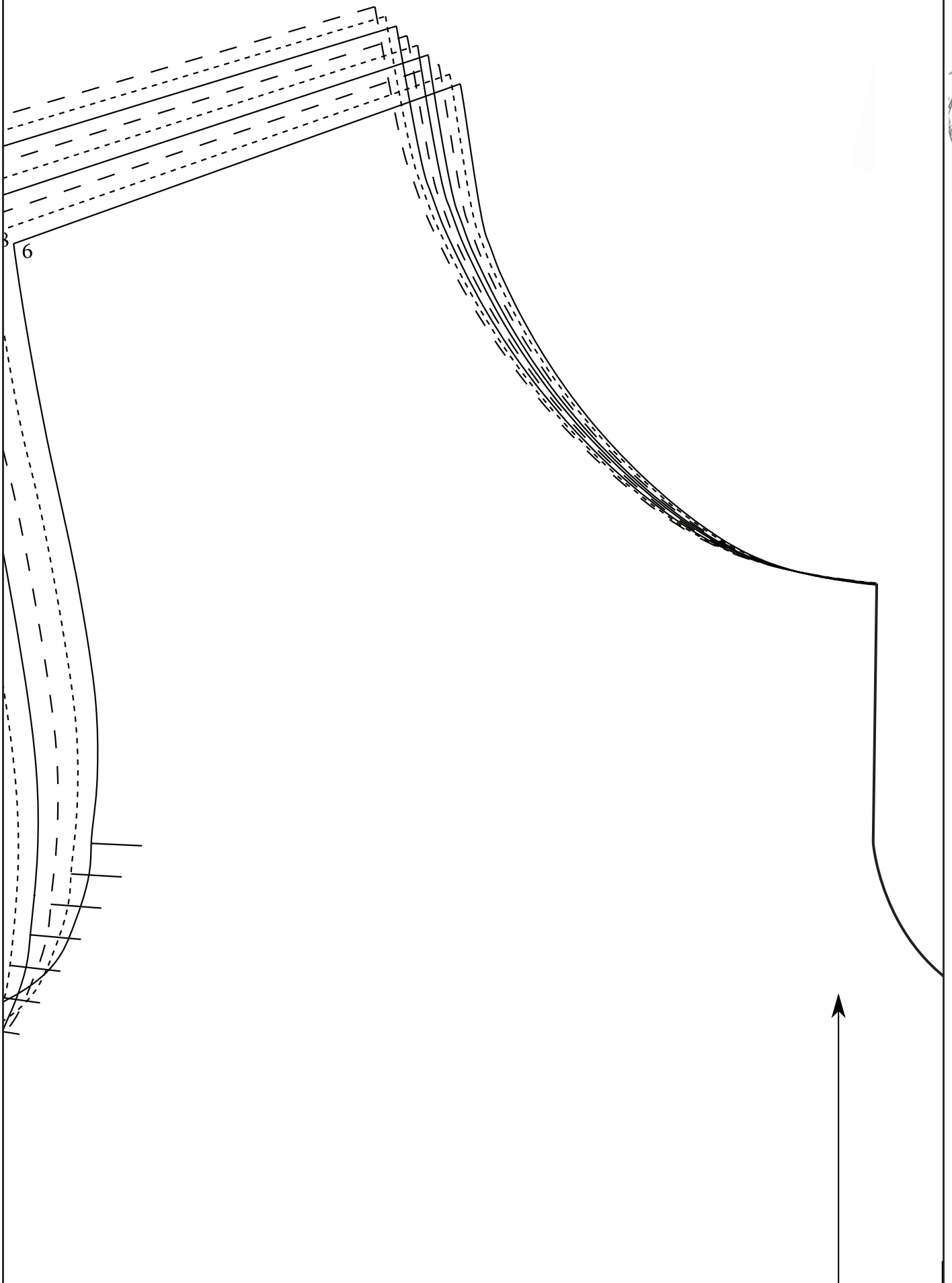
3

TEST SQUARE

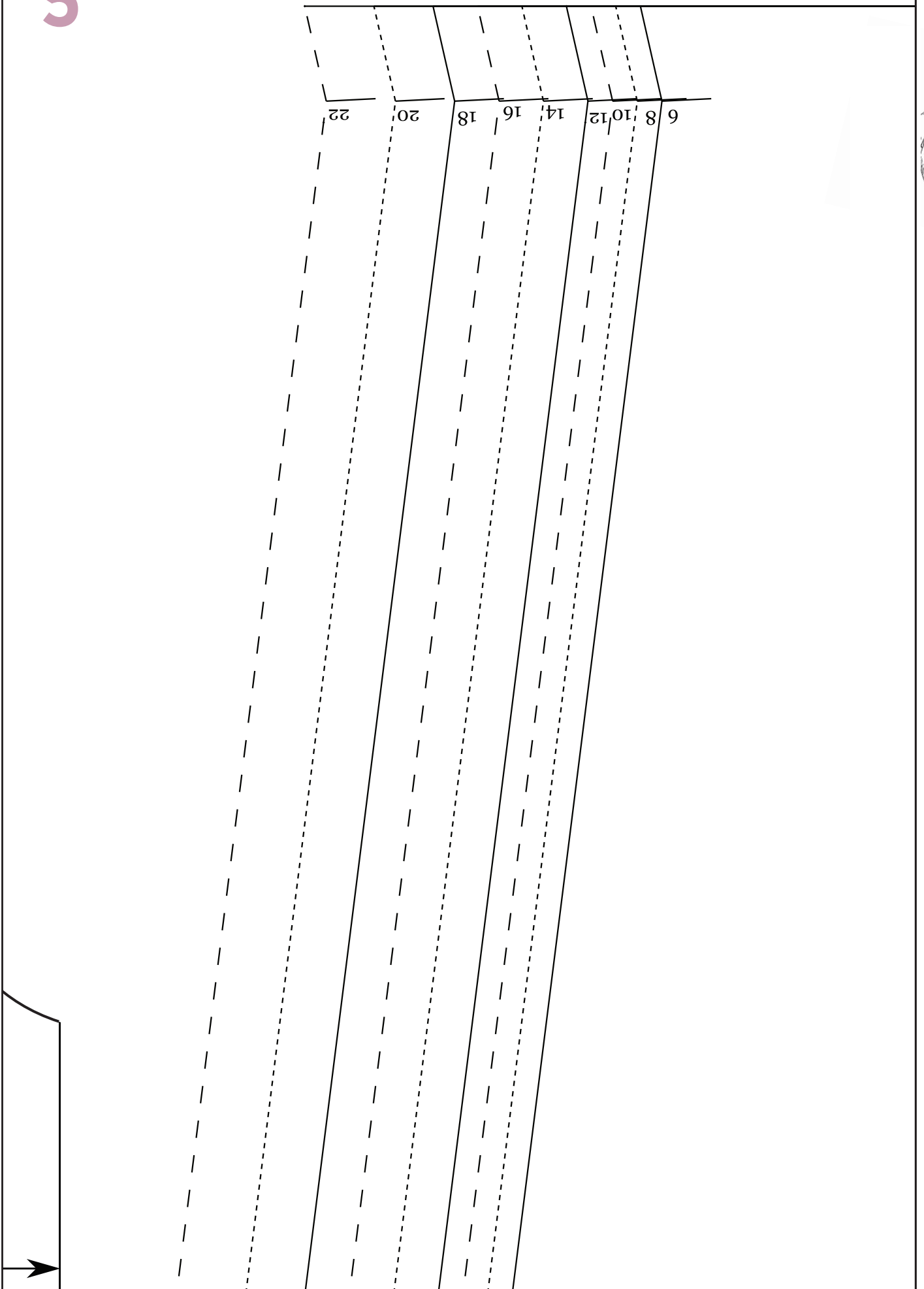
10 CM X 10 CM



4



5





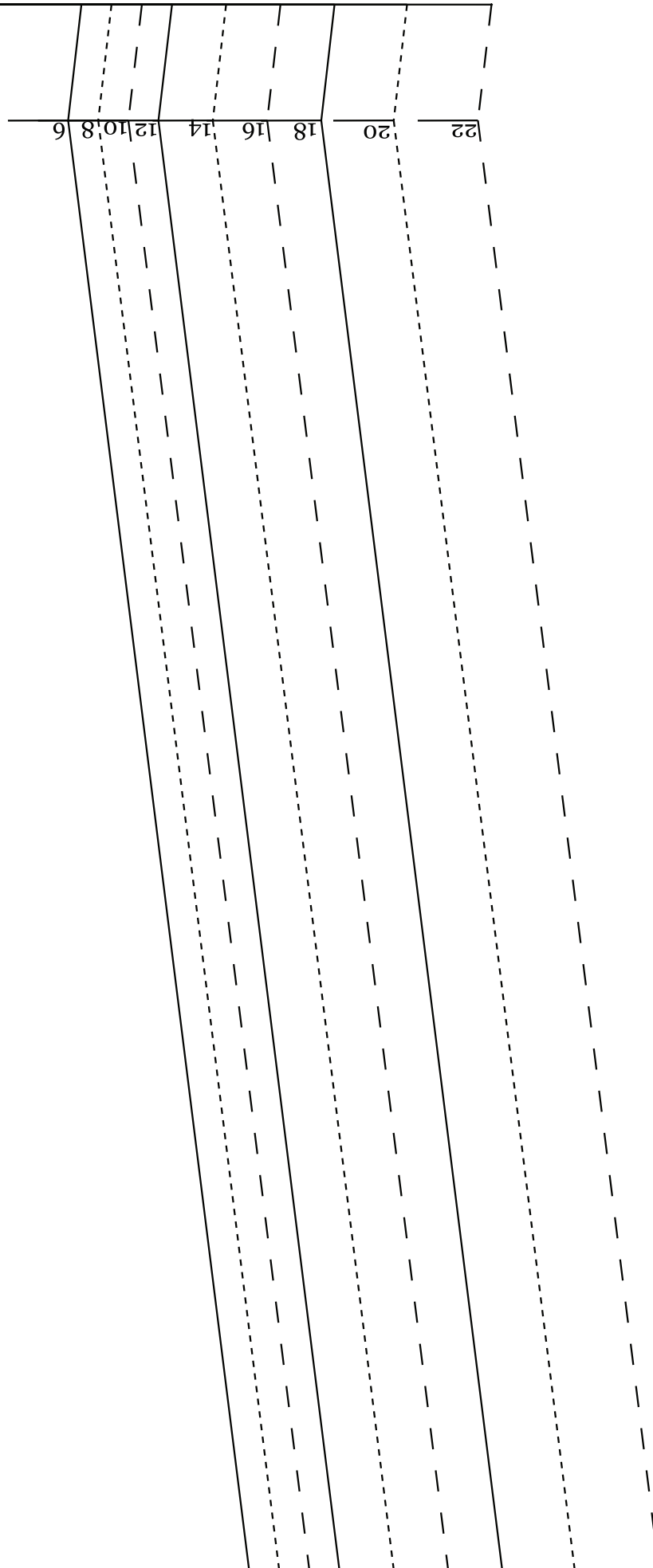
1.5cm seam allowance included
USE 1CM SEAM ALLOWANCE AT ARMHOLE

cut 1 pair fabric

LONG SLEEVE



7



8

22

20

18

16

14

12

10

8

6



9



BACK BODICE
cut 1 on fold fabric

1.5cm seam allowance

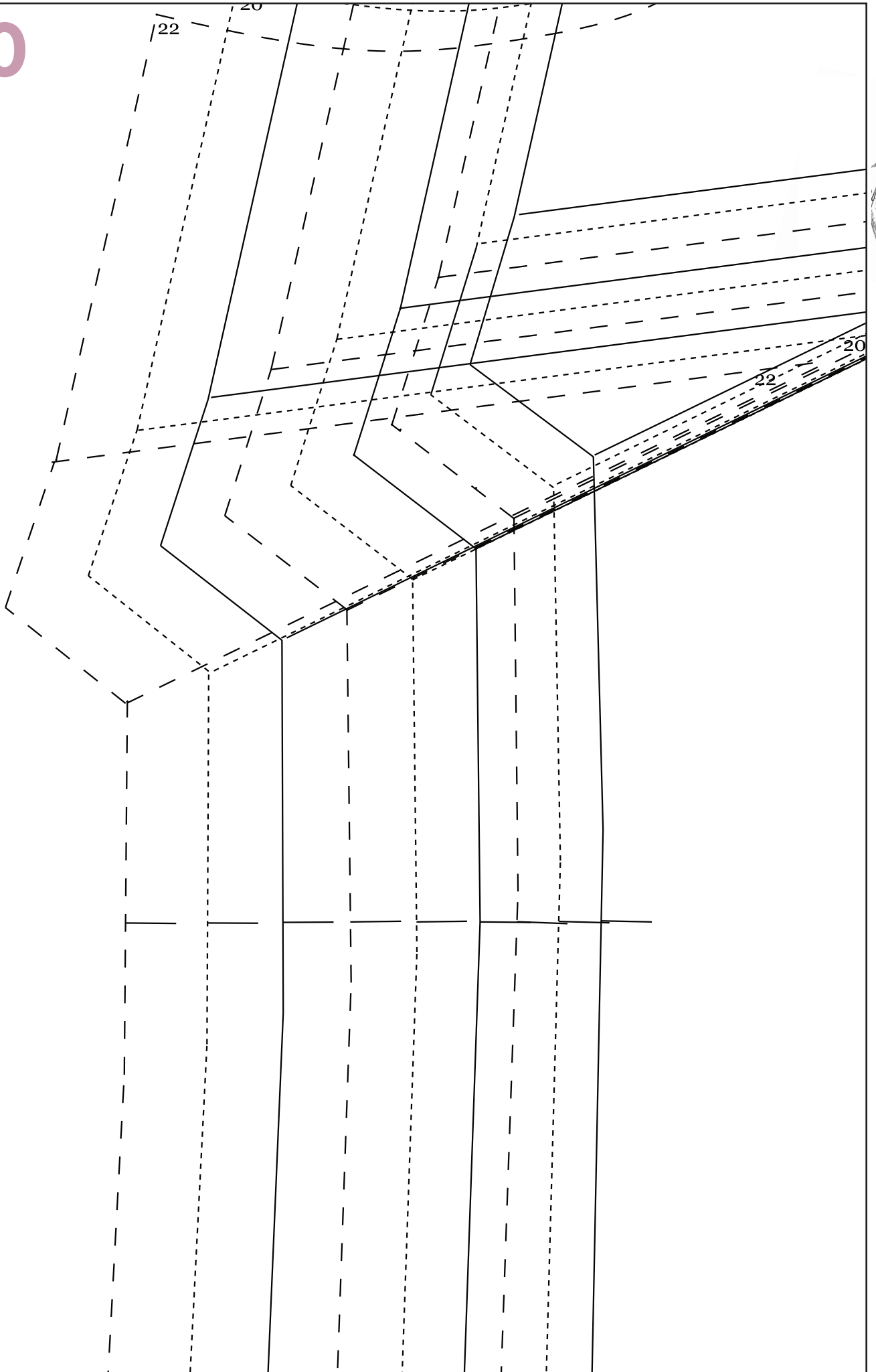
6

Straight grain

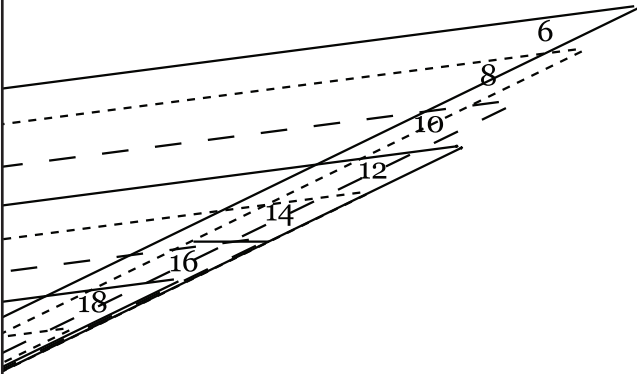
CUT ONE ON FOLD



10



11



Straight grain



FRONT BODICE
cut 1 on fold fabric

1.5cm seam allowance



12

CUT ONE ON FOLD



22
20
18
16
14
12
10
8
6

mt



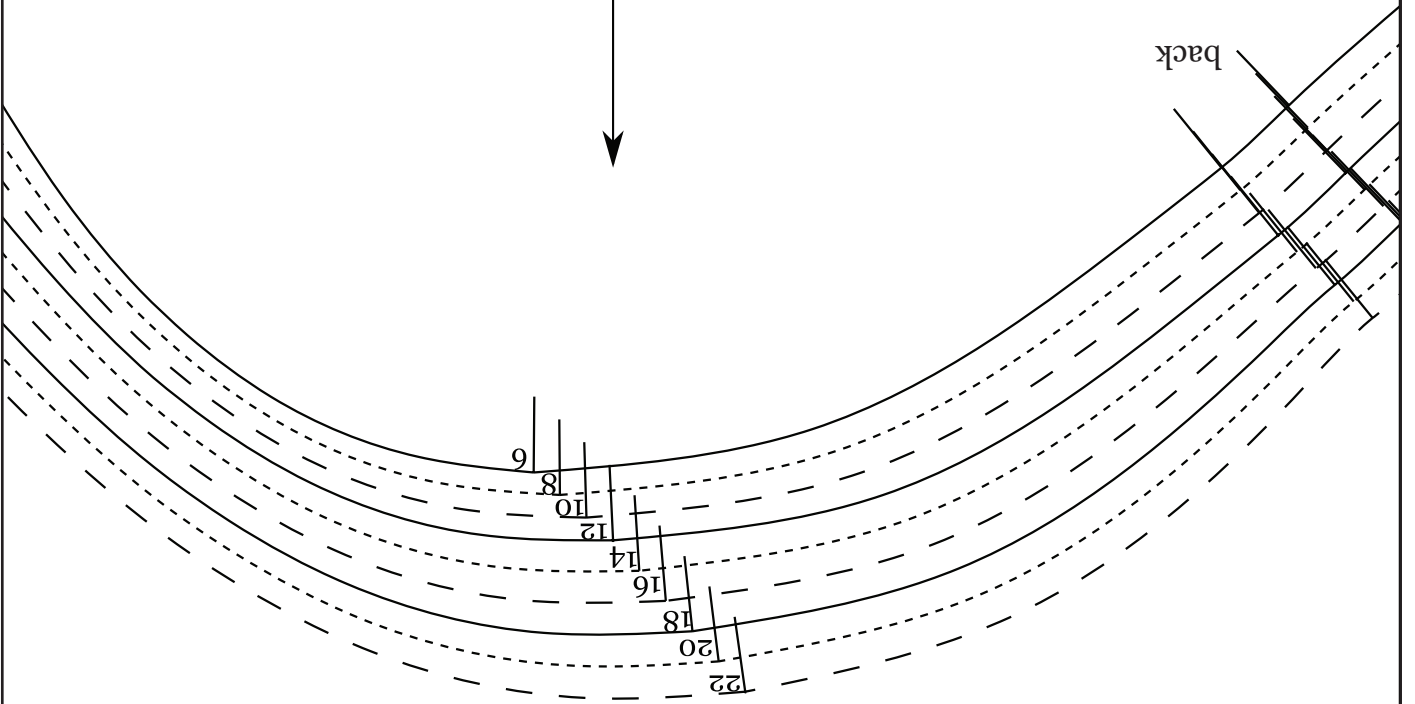
13



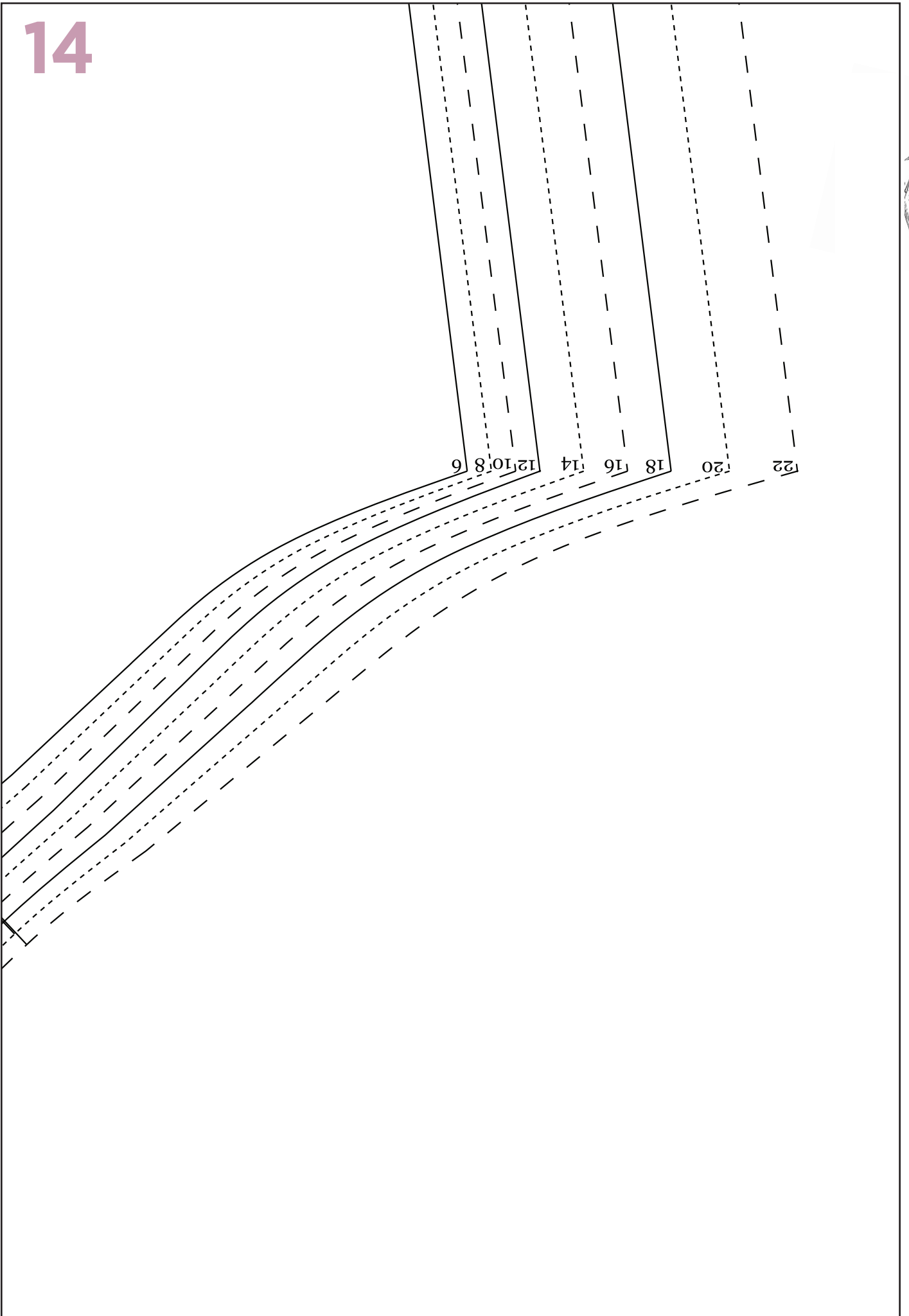
Straight grain

front

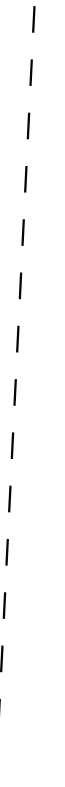
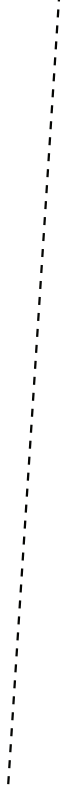
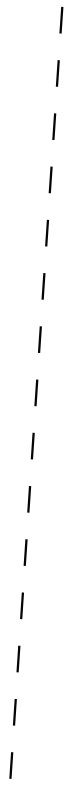
back



14



15



22

20

18

16

14

12

10

8

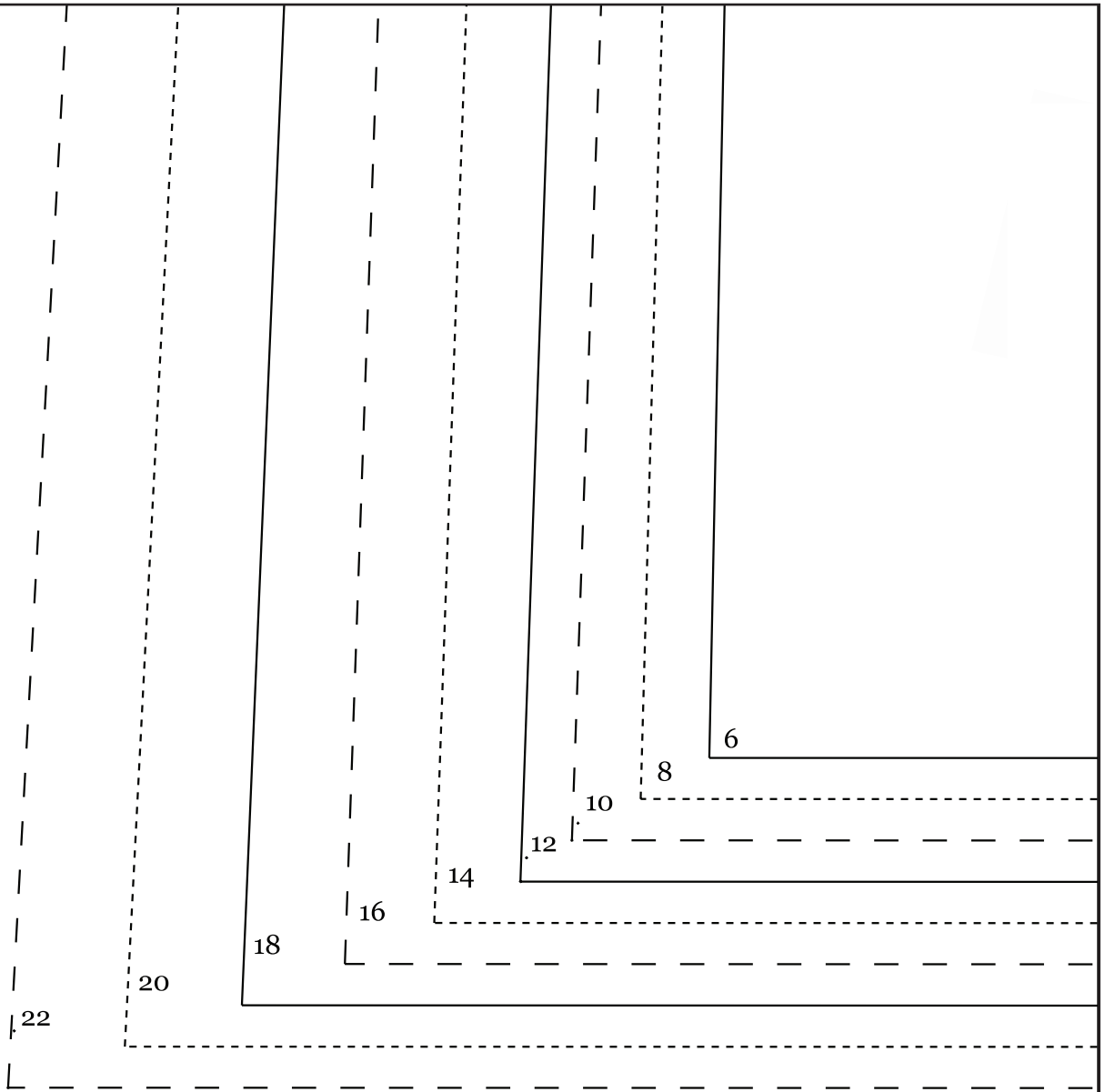
6



16



17

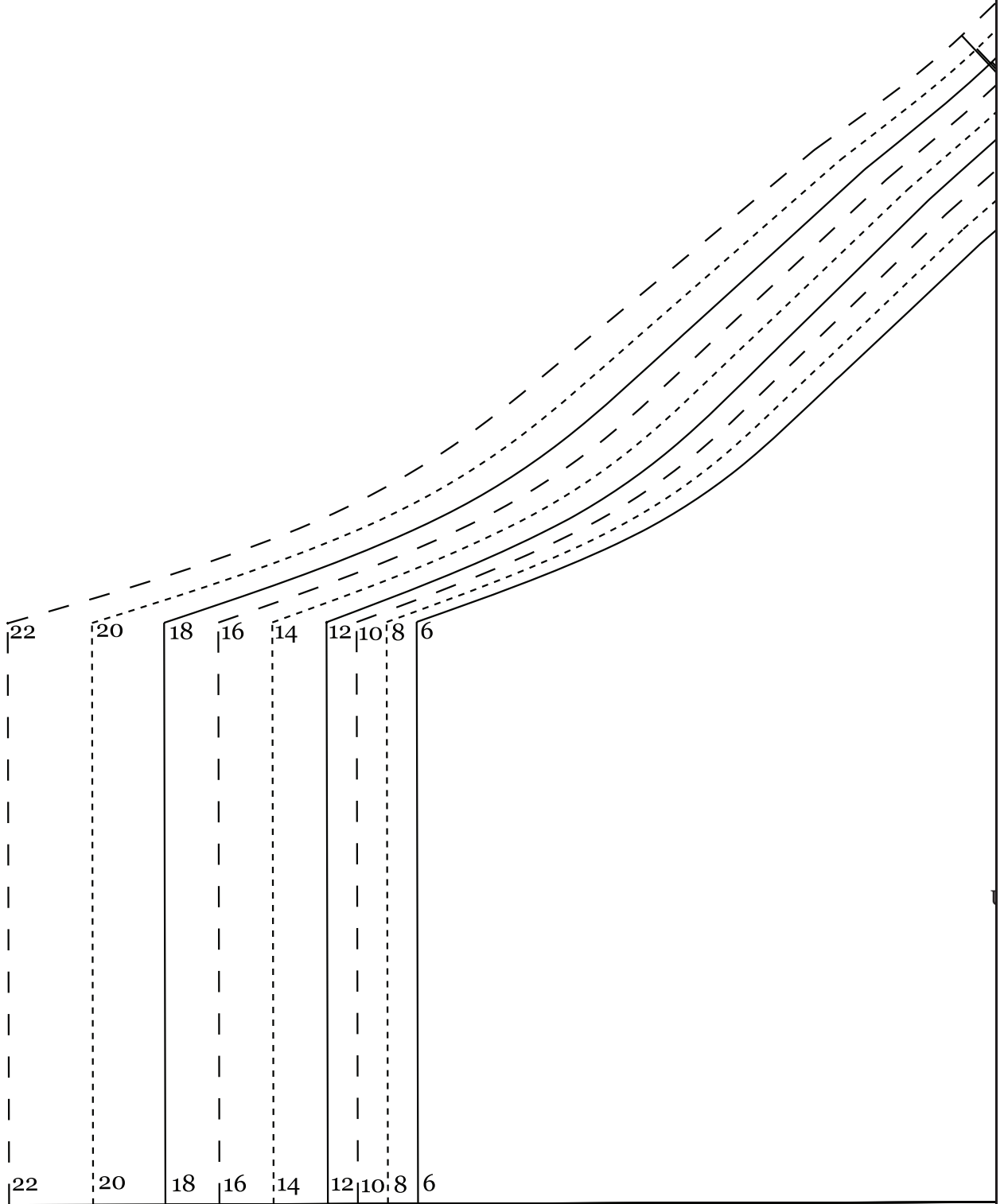
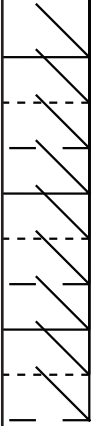


18

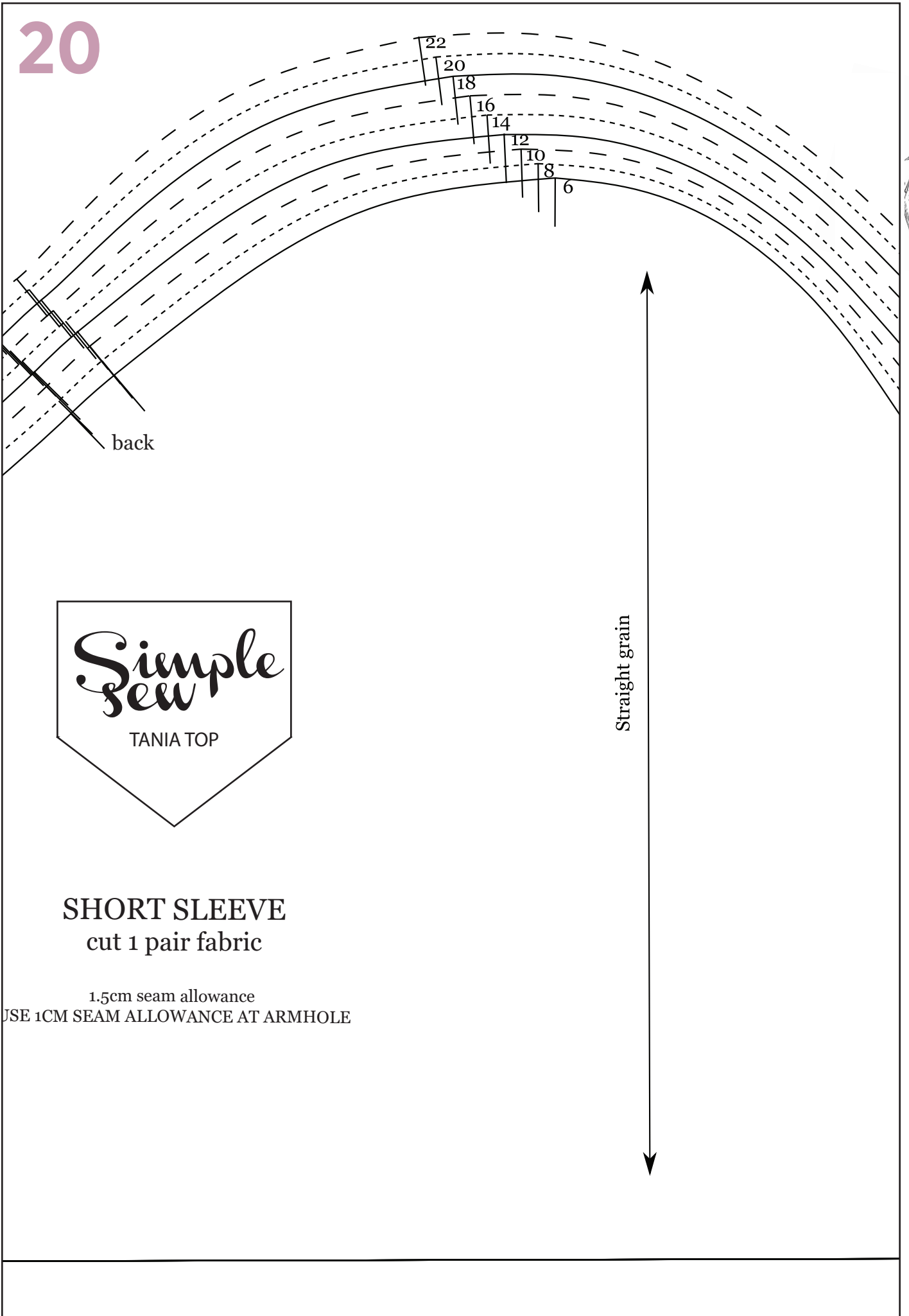
5



Three sets of handwriting practice lines. Each set consists of a solid top line, a dashed middle line, and a solid bottom line, providing a guide for letter height and placement.



20



SHORT SLEEVE
cut 1 pair fabric

1.5cm seam allowance
USE 1CM SEAM ALLOWANCE AT ARMHOLE

