

The Jennifer

The perfect dress for everyone that has a smaller frame

PDF
Pattern



The Jennifer

The perfect dress for everyone that has a smaller frame



Design your
Own with
Frocks & Frolics
'You Tube'
Tutorials

The Jennifer Dress

What you need:

1 meter/yard of fabric (jersey in one or two way stretch)

I usually work with a medium weight cotton and lycra mix fabric. Don't use 100% cotton unless its fabulous quality as it will stretch and loose shape like a tired t-shirt.

For the binding I used black silk organza which goes with all dark colours. But you can also use a matching light weight cotton, it can even create an interesting contrast!

PDF Pattern:

Make sure press the option don't shrink to fit A4 size! This is very important otherwise the pattern will be too small!

(Most printers do it right automatically!)



Preparation:

Attach all the pattern pieces together. Use the little flowers as a guide if you are not sure.

Cut out back and front on the fold and the facing which is needed for the back opening at the neckline.

You also need bias binding for the arm and neck hole. Cut it 3cm wide at a 45% angle and as long as possible. Watch the tutorial to see how.

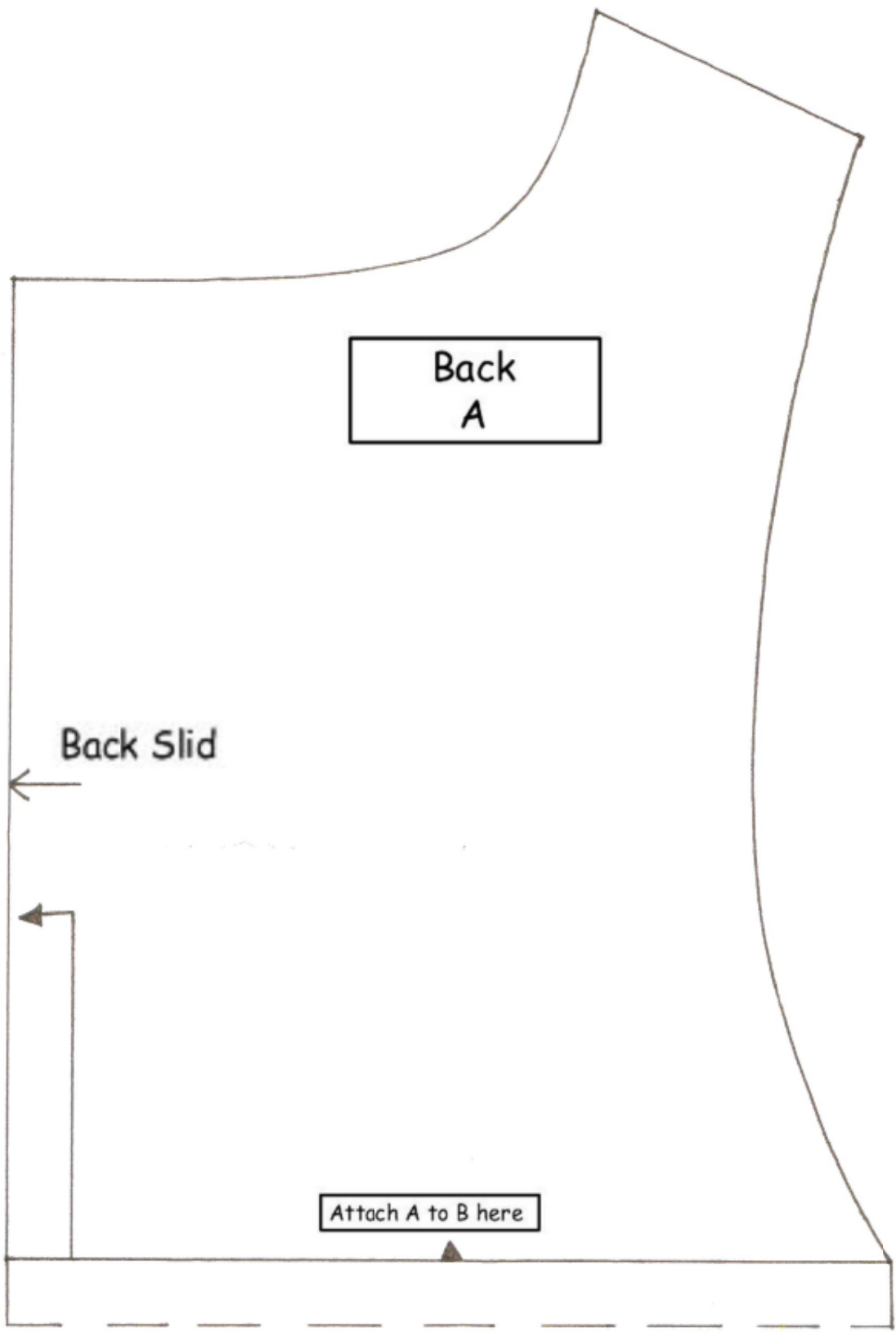
If you prefer you can simply cut the front and back (A & B) again and use it as a full facing as shown in the Beach Dress tutorial.

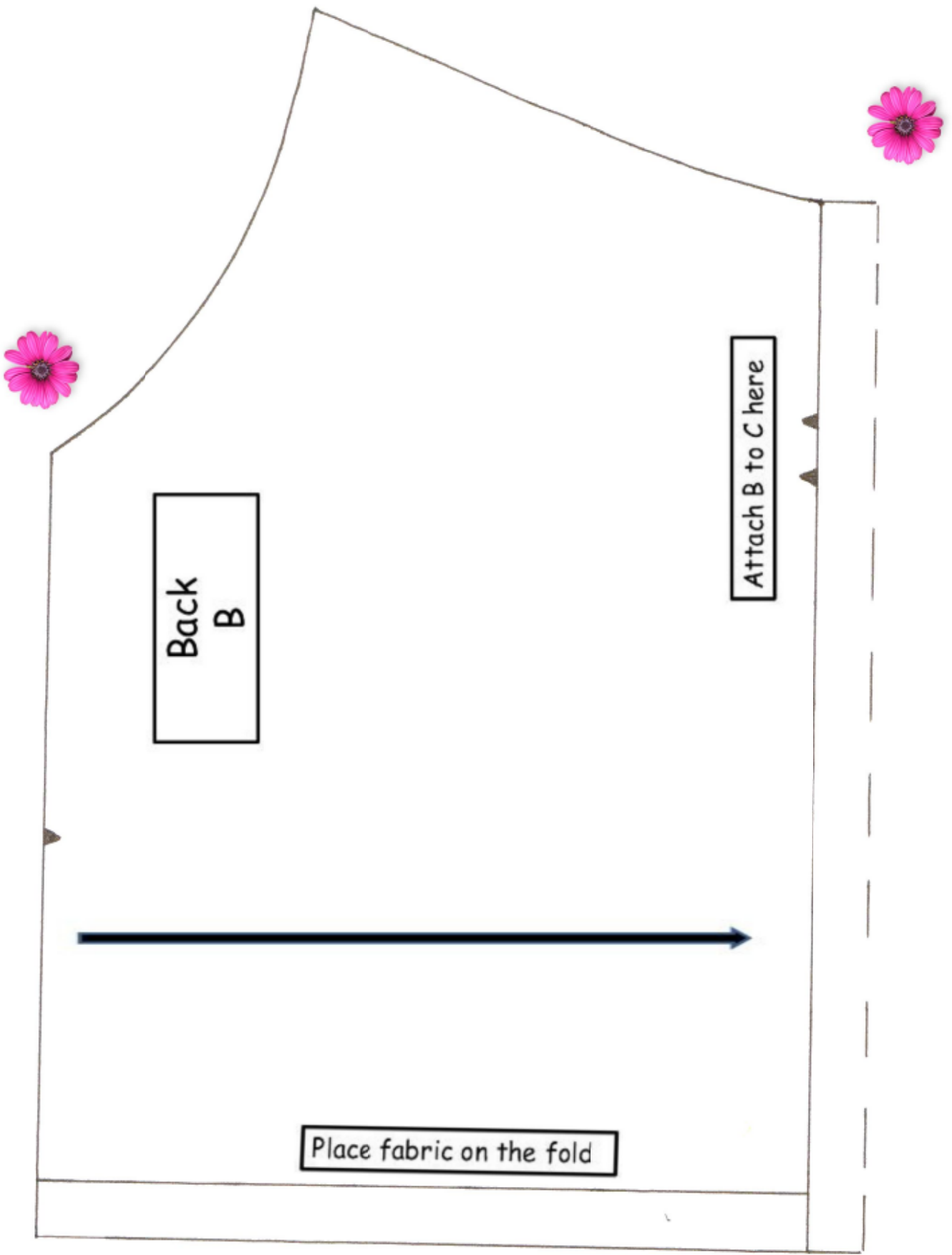
I am binding the arm and neck hole to avoid stretching and to show you a different professional finish.

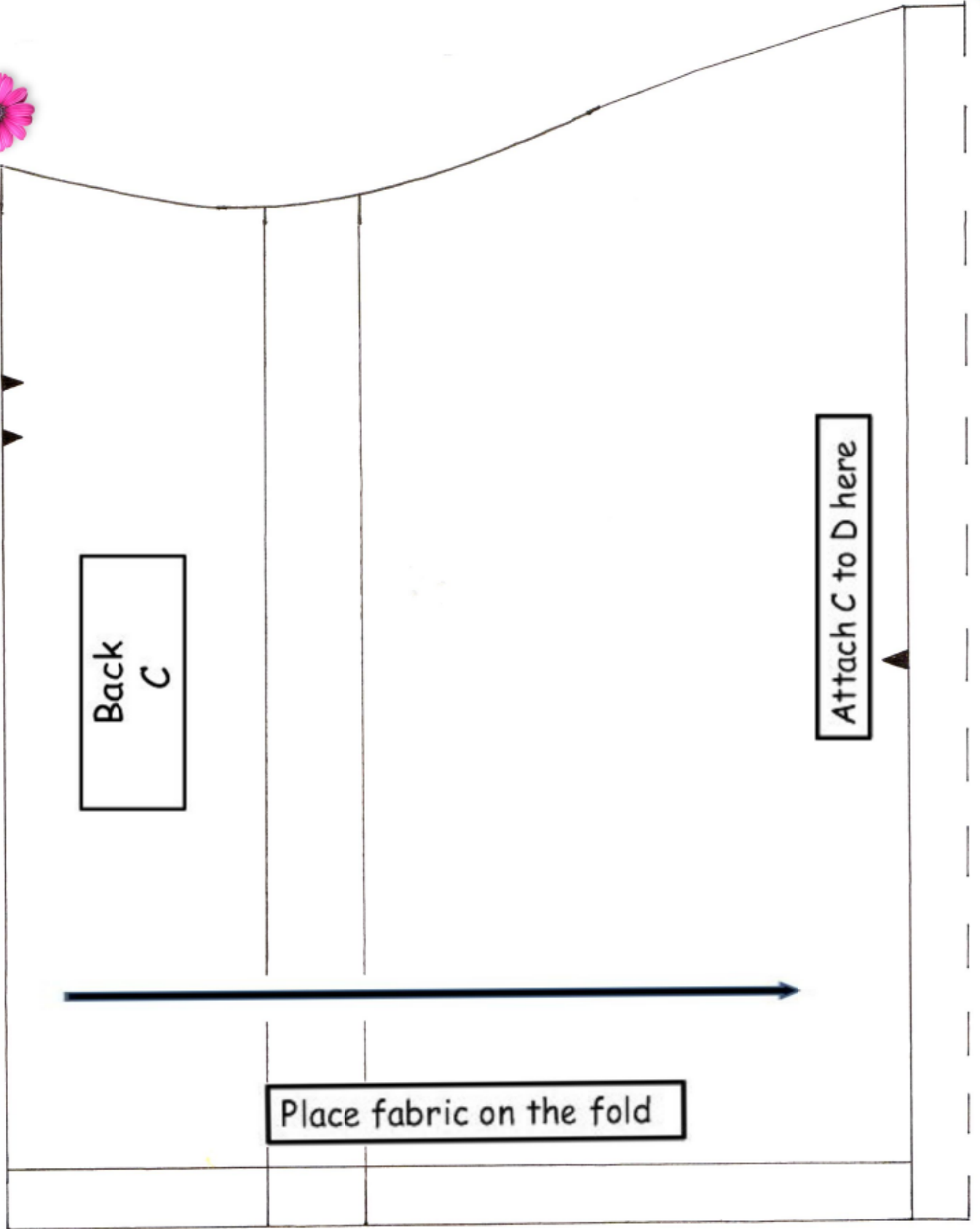
The 'You tube Tutorial' will take you through the making process. Enjoy!

Design your own with the 'Vanessa Designs' Collection, now on You Tube to help you create fabulous styles.







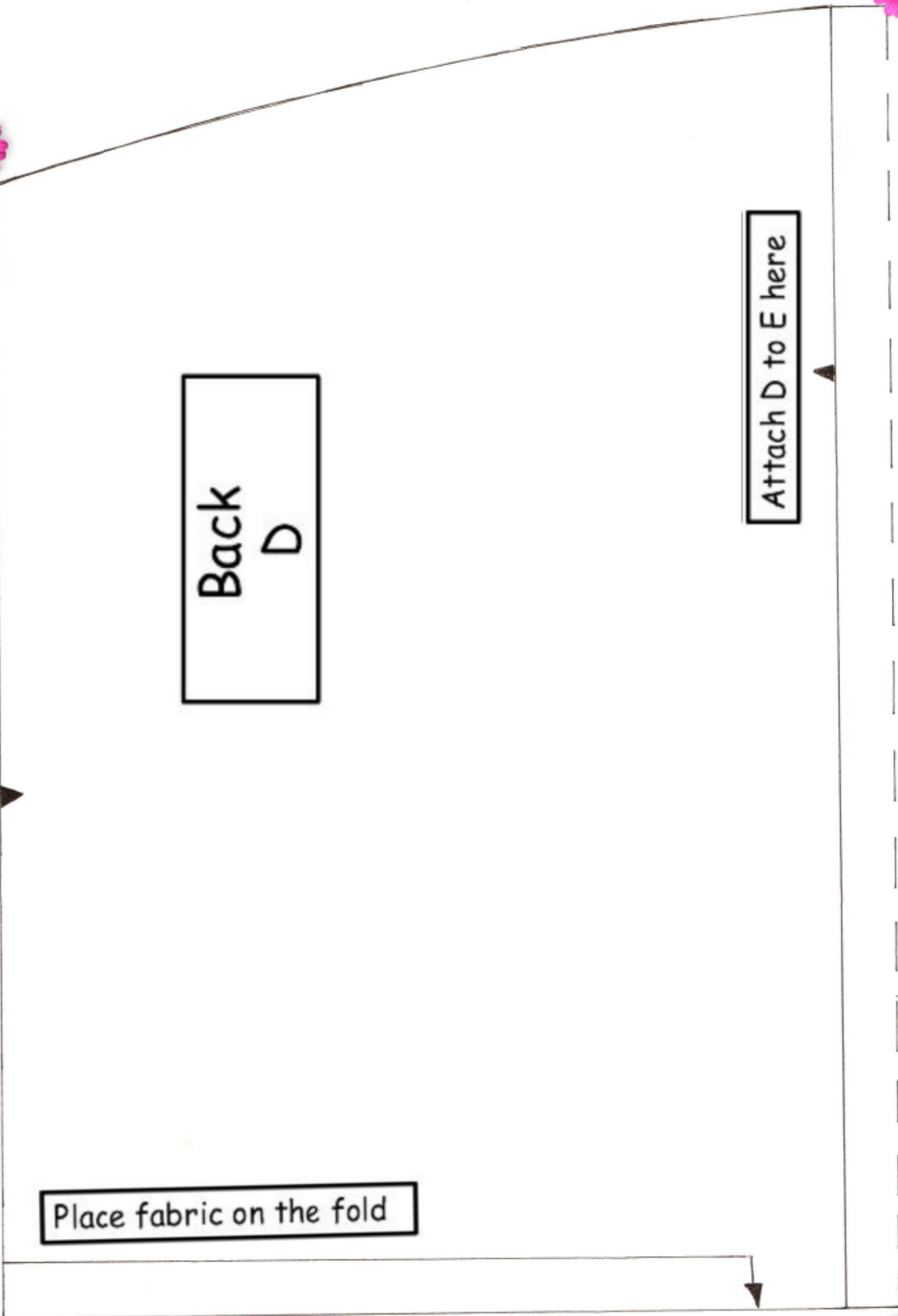


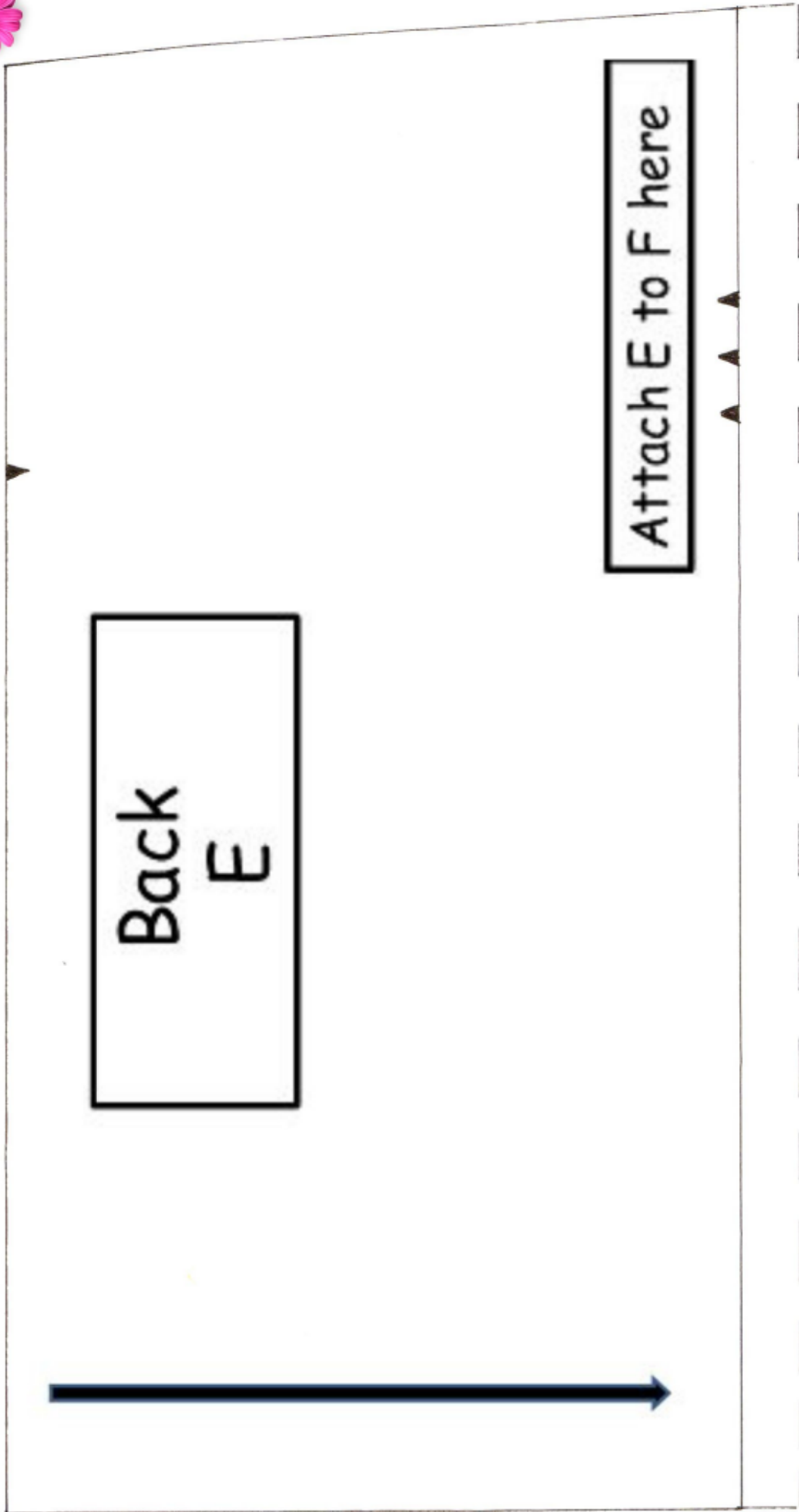


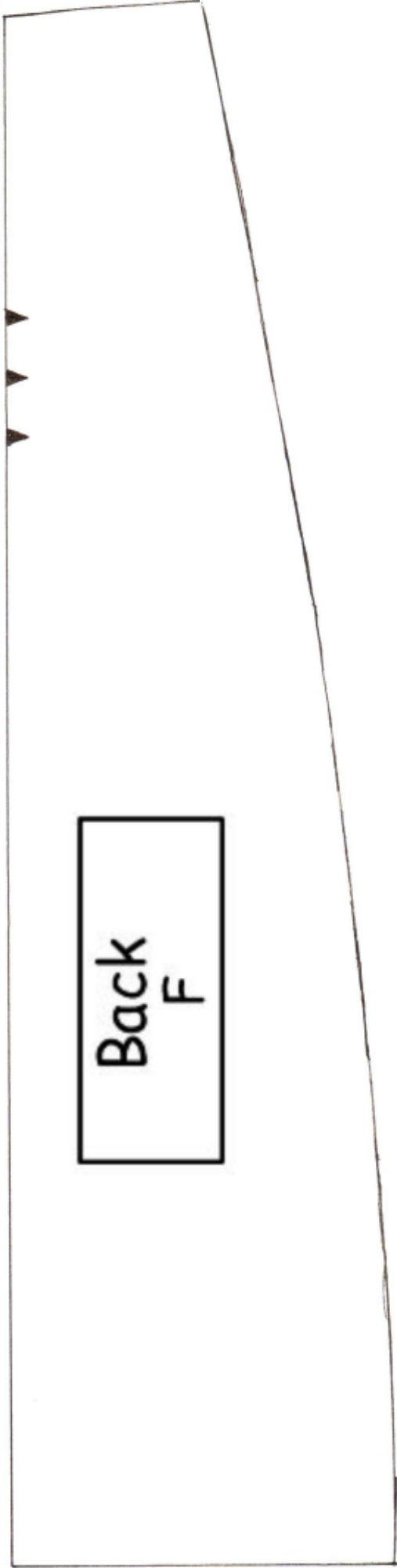
Back
D

Attach D to E here

Place fabric on the fold





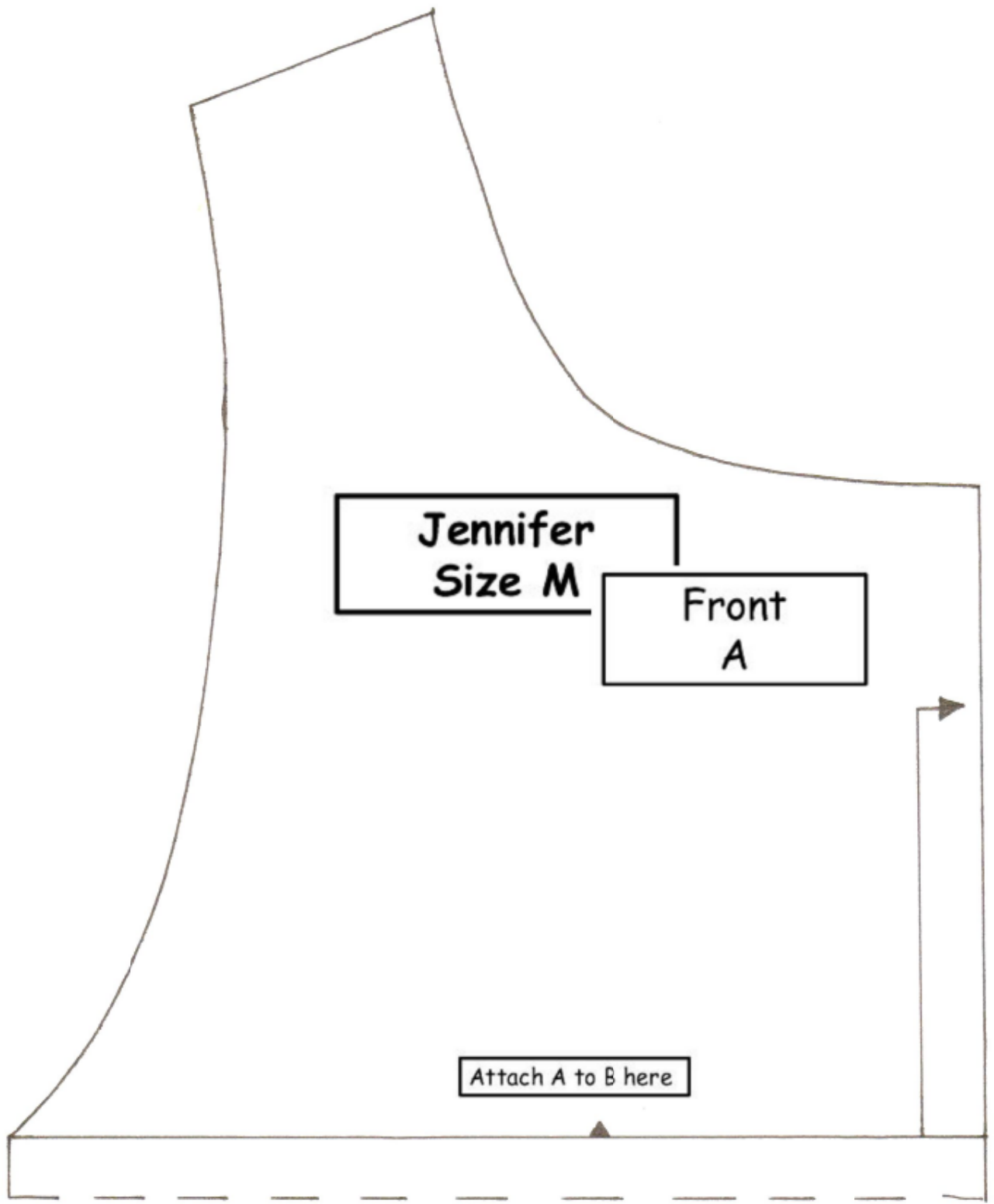


Back
F



Scale of 5 cm. Make sure your
printed pattern is true to size!

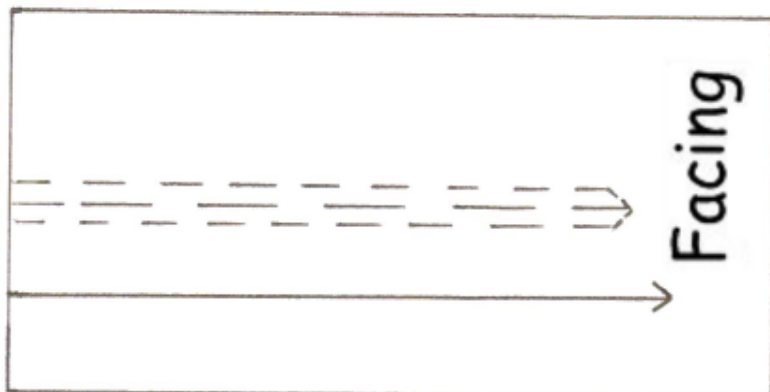
Attach all pieces then cut:
Front 1X
Back 1X
Facing Front (to attachment line)1X
Facing Back (to attachment line)1X



Jennifer
Size M

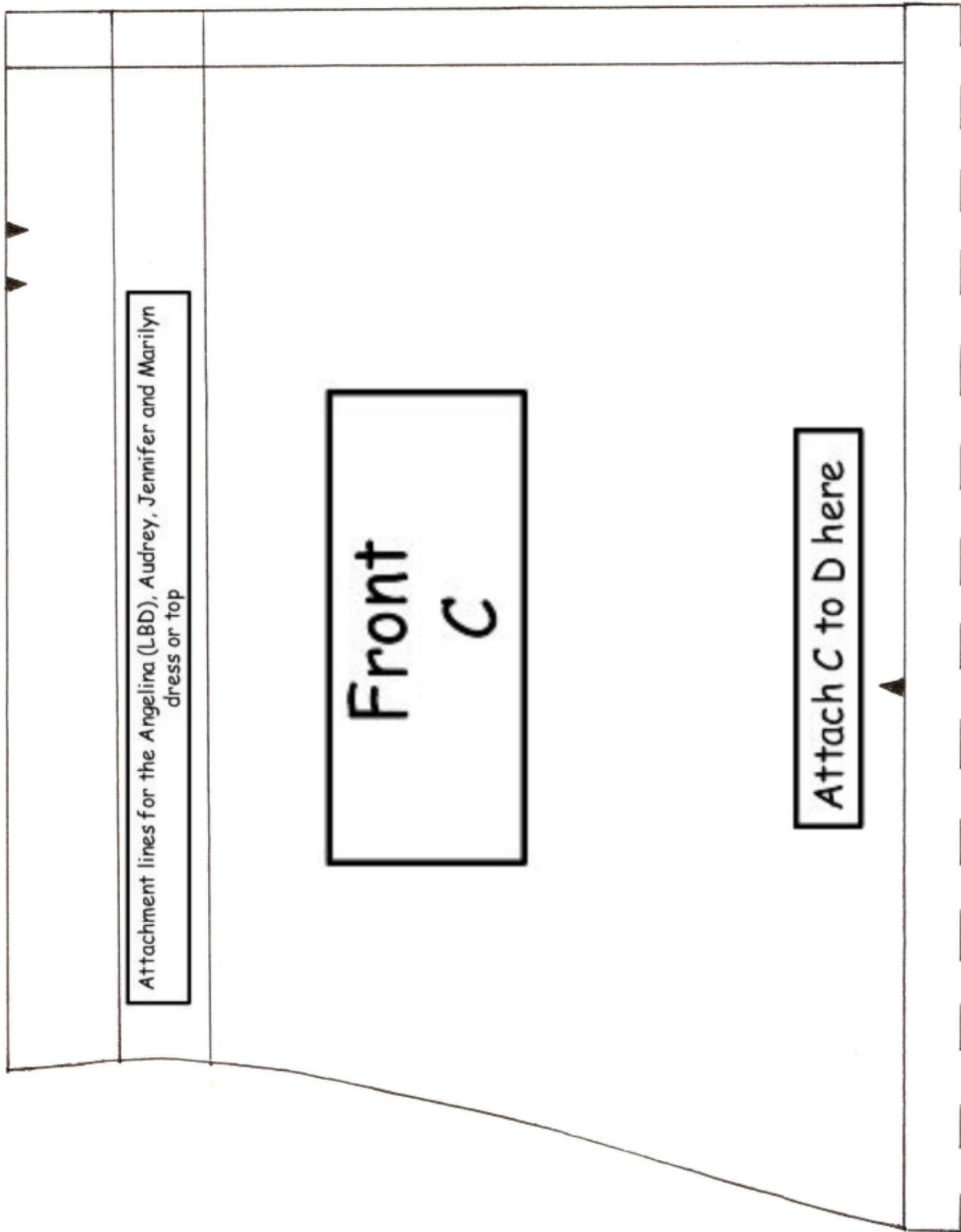
Front
A

Attach A to B here



Facing



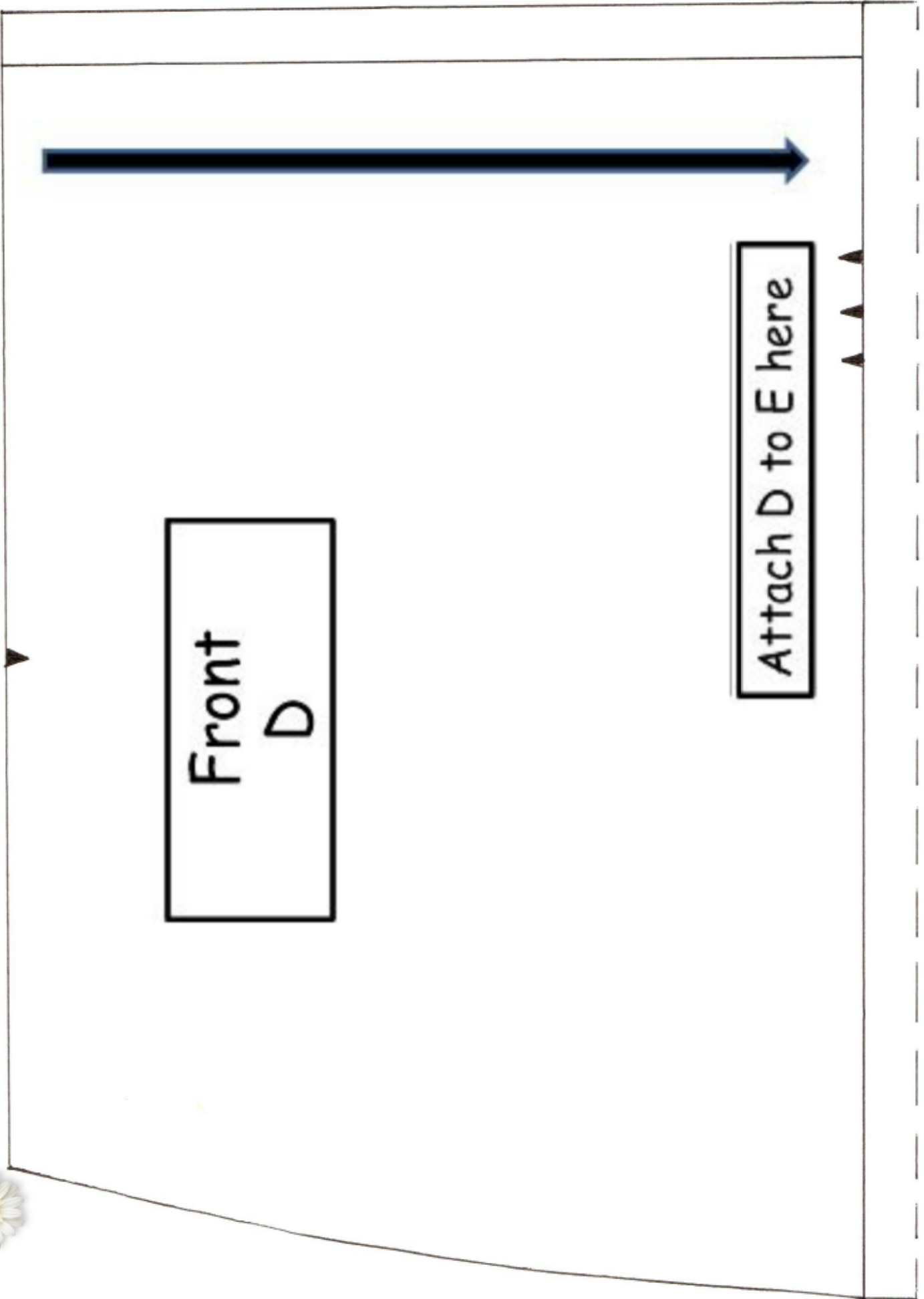


Attachment lines for the Angelina (LBD), Audrey, Jennifer and Marilyn dress or top

Front
C

Attach C to D here





Front
D

Attach D to E here



