

Carissa Clutch



Carissa is the perfect clutch for every day, not too big, not too small. Six card slots, zippered pocket, wristlet strap and an optional hand strap.



Finished size of bag is: Height 7 inch and Width 11 inch

Copyright ©Huff 'n Cuffs 2016
www.huffncuffspatterns.com

Contents

Fabric, Interfacing and Materials needed.....	3
Preparation	4
1. Attach top main panel to bottom main panel	5
2. Hand strap (optional)	6
3. Lining card slots.....	7
4. Interior zipped pocket.....	8
5. Connector and wristlet strap.....	10
Construction of Bag	12
6. Attach exterior to lining	12
Pattern Pieces	14

This pattern has been designed by
Katherine E. Fay ©Huff 'n Cuffs.

Please do not reproduce this pattern in anyway or claim it as your own design.
You may sell your bags made from this pattern.

If any problems, please email me at huffncuffs@gmail.com

Please share your creations from this pattern on the Huff 'n Cuffs patterns group on
Facebook – <https://www.facebook.com/groups/HuffnCuffsPatterns/>

Fabric, Interfacing and Materials needed

- Exterior fabric – approx. $\frac{1}{4}$ yard quilting weight
- Lining fabric – approx. $\frac{1}{2}$ yard quilting weight
- Contrast fabric – approx. $\frac{1}{4}$ yard vinyl, leather, décor weight
- Light to medium weight woven fusible interfacing – approx. 1 yard *e.g. Pellon sf101* (amount depends on interfacing being used)
- Stabilizer – approx. $1\frac{1}{2}$ " x $1\frac{1}{2}$ " *e.g. Peltex 71f*
- Fusible fleece – approx. $\frac{1}{4}$ yard *e.g. Vilene 630 or 640, Pellon 987f*
- 12" zipper
- 7" zipper
- 1 x 1" O ring
- 1 x $\frac{3}{4}$ " swivel snap hooks
- 2 small rivets (*optional for hand strap*)

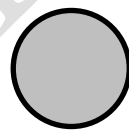
General Information

Seam Allowance is $\frac{3}{8}$ " (1 cm) unless specified in pattern. I would not recommend using foam for this pattern. Backstitch on all seams unless specified in pattern.

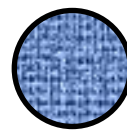
- 1" = (2.54 cm)
- $\frac{1}{2}$ " = (1.27 cm)
- $\frac{1}{4}$ " = (0.6 cm)
- $\frac{1}{8}$ " = (0.3 cm)
- 1 yard = (.8 metre)



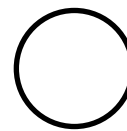
Exterior



Lining



Contrast



Wrong Side

Stitching line - - - - -

Glossary

<u>Topstitch</u>	Decorative large straight stitch (e.g. 3.5 to 4) usually sewn around finished edge of item
<u>Baste</u>	To sew two pieces of fabric together temporarily with long removable stitches, either done by hand or on machine
<u>Backstitch</u>	When you stitch backwards over previously sewn stitches
<u>Clip Curves</u>	Clip a V with scissors on curves to reduce bulk

Preparation

*****Important – Read First*****

Print pattern at **Actual Size** or **100%**. I would suggest printing the pattern piece on **page 14** with the printing test first to make sure pattern is printing at the proper dimensions. Cut patterns along **solid black line**. Tape pattern pieces **#1a to #1b** and **#2a to #2b**.

Cutting and Fusing Instructions:

Cut all pattern pieces from fabric, interfacings and fleece according to chart below. **Please note** that **I** means cut 1, **II** means cut 2 and so on! Cutting instructions are also included on the pattern pieces.

Pattern pieces	Exterior	Lining	Contrast fabric	Woven interfacing*	Fusible fleece*
Top Main Panel #1	II			II	II
Bottom Main Panel #2			II		II**
Main Panel Lining #3		I		I	
Side Panel Lining #4		II		II	

*Fuse woven interfacing and fleece to the exterior fabric pieces. Fuse woven interfacing to lining pieces, strap and connectors. I prefer to fuse fleece first, then woven over top of the fleece. Please do what you prefer. **Fuse to décor weight fabric, if using thin vinyl then fuse fleece with an adhesive. Do not fuse fleece if using thick vinyl/leather.

Tips for Using Vinyl

- Use either a teflon foot, walking foot or roller foot.
- Use a larger stitch such as 4 and above.
- Practice with some scraps if possible, adjust tension if needed.
- Do not pin vinyl as it may leave holes, use clips to hold pieces together.
- Do not backstitch unless necessary, vinyl may tear if sewn over too many times in one area.

Measure and cut additional pieces:

Wristlet strap and connector –

Cut 1 of each for wristlet strap: 15" by 3" exterior fabric and woven interfacing.

Cut 1 of each for connectors: 1½" by 3" exterior fabric and woven interfacing.

Hand strap (optional) –

Cut 1 of each: 2½" by 12" contrast fabric, lining fabric and woven interfacing (only interface the lining piece).

Pocket lining –

Cut 2 of each: 8" by 5.5" lining fabric and woven interfacing.

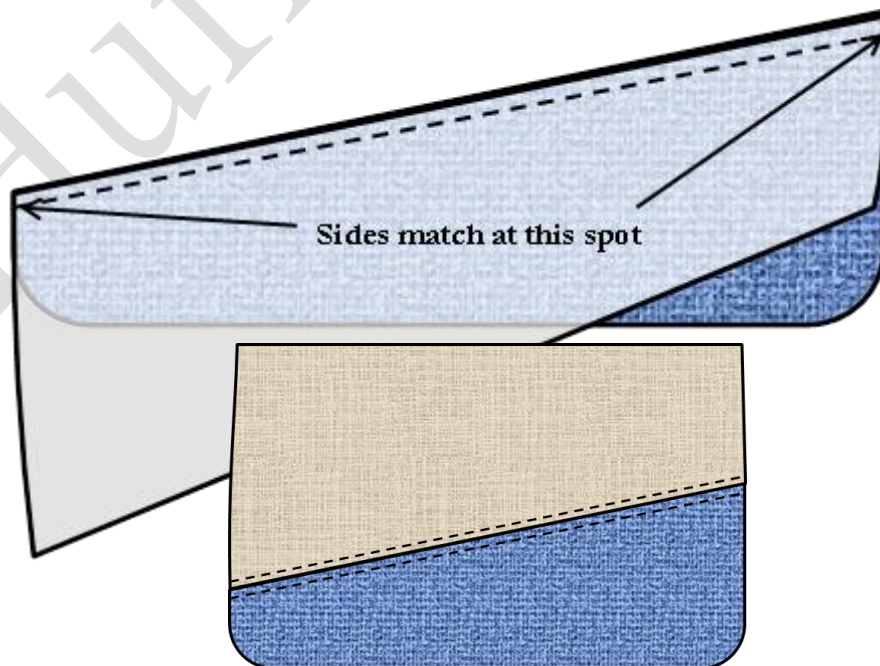
Card slots –

Cut 1 of each: 8" by 18.5" lining fabric and woven interfacing

1. Attach top main panel to bottom main panel

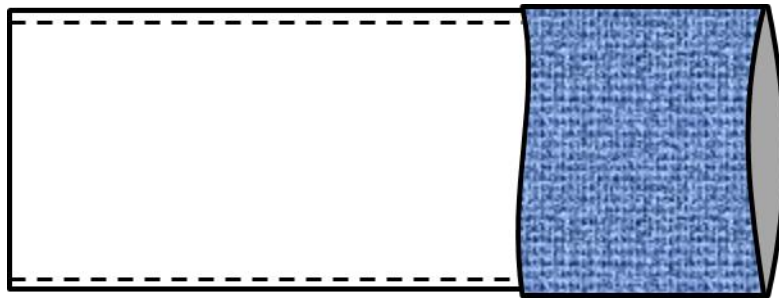
Pin/clip bottom raw edge of **top main panel #1** to top raw edge of **bottom main panel #2**, right sides together. Side edges should be matching at the ¼" mark.

Stitch with a ¼" seam, **backstitching** at both ends. Press open, make sure seam is pressed flat and **topstitch** along both pieces, catching the seam. **Repeat** to other main panel pieces.



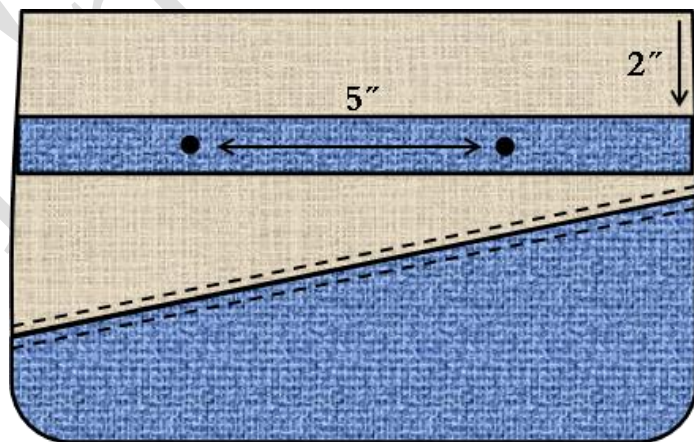
2. Hand strap (optional)

Pin/clip hand strap pieces right sides together, stitch down both long sides at $\frac{1}{4}$ " seam. Turn hand strap right sides out. Strap should be approx. 2" wide. Roll seams between your fingers to flatten out, topstitch $\frac{1}{8}$ " along the length on the contrast side.



On the lining side of the hand strap, mark two holes 5" apart and centred. **(This measurement is for a medium sized ladies hand. Minus or add $\frac{1}{2}$ " for small or large)** Hand strap will be attached 2" down from the top raw edge of the exterior main panels.

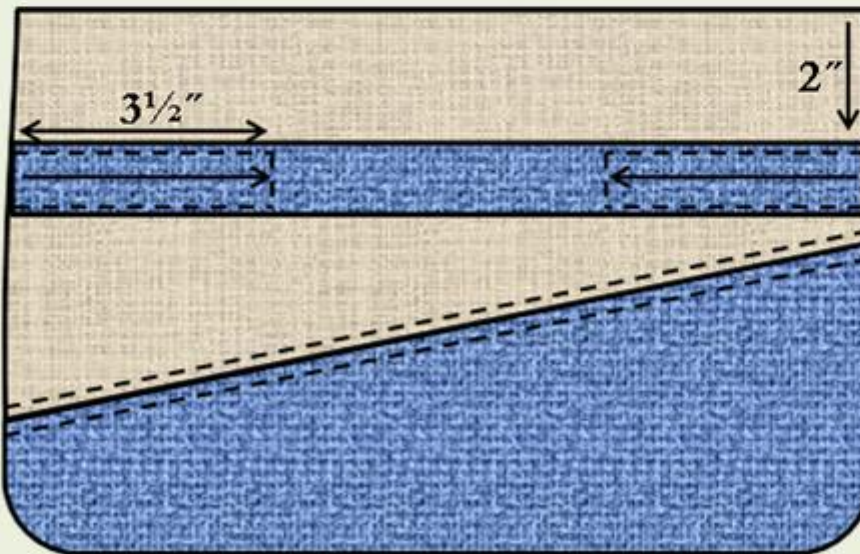
Make the two holes on the hand strap first with a hole puncher. Use a fabric pen to mark where the hand strap will go on the main panel. Punch holes on main panel.



Cut two small pieces of stabilizer, punch a hole in the centre. Push the rivet through the hand strap, fabric and stabilizer **(use two pieces if needed to build up thickness, rivet shaft should just peek through. If it's too long the shaft may bend when hammered)** and snap the rivet cap on the shaft. **Repeat** to attach the other end of the hand strap, now hammer rivets into place with a setter and anvil or a rivet press machine.

No Rivets!

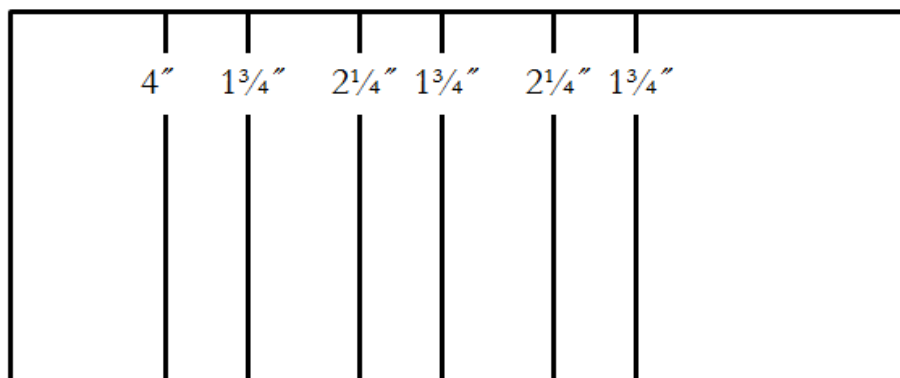
If you don't have rivets, you can sew the hand strap to the main panel instead. Sew close to the topstitching line from one raw edge (don't sew over the topstitching if your hand strap is vinyl), stop at the $3\frac{1}{2}$ " mark, sew across the strap and then follow the other topstitching line back to the raw edge. No need to backstitch at either end. **Repeat** to other end of hand strap.



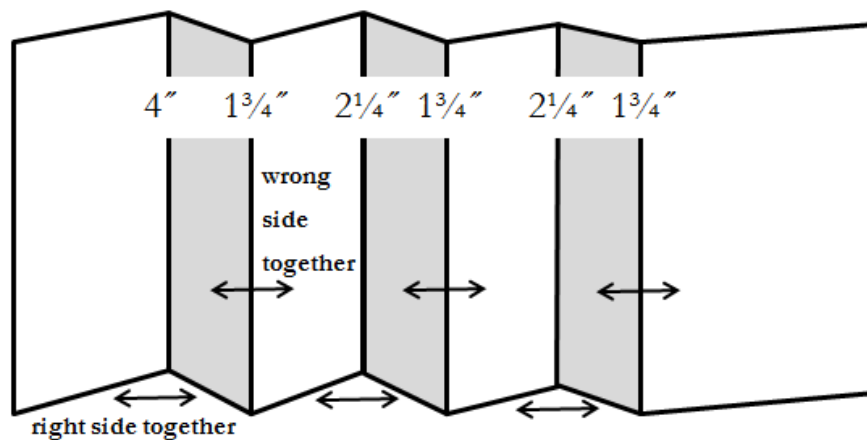
3. Lining card slots

Mark the following measurements along the wrong side of the card slot panel.

$4"$, $1\frac{3}{4}"$, $2\frac{1}{4}"$, $1\frac{3}{4}"$, $2\frac{1}{4}"$ and $1\frac{3}{4}"$



Fold right sides of the card slot panel together at the first measurement along the 4" mark. Fold the rest of the measurements accordion style. Press with an iron.

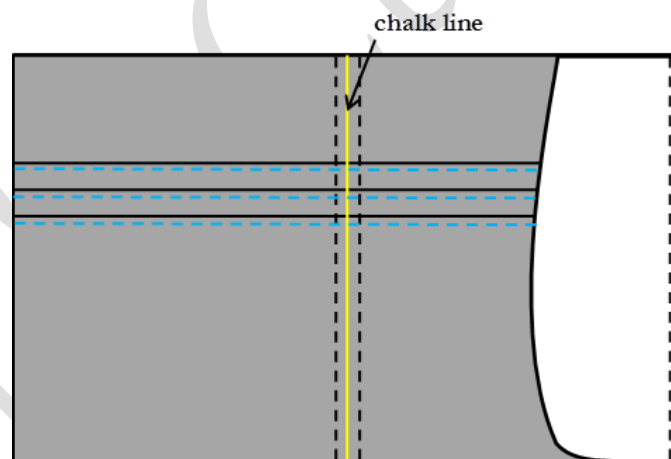


Topstitch along the top of the folds at 1/8".

Mark the centre of the card slot panels at 4" with a fabric pen/chalk. Stitch down both sides of the line at 1/8", backstitching at both ends.

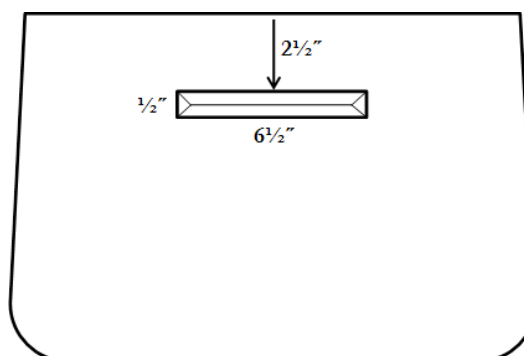
Pin the straight edges of the side panel lining pieces to the raw side edges of the card slot panel, right sides together.

Stitch with a 1/4" seam. Press open, **topstitch** down the side panel lining pieces at 1/8".

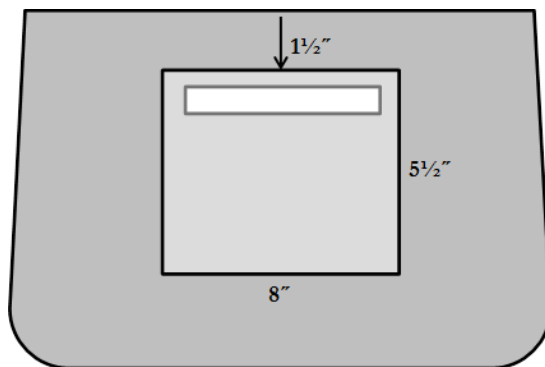


4. Interior zipped pocket

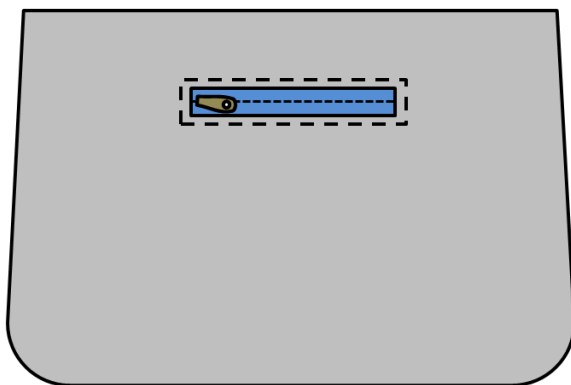
Crease a centre line in **one main panel lining #3**, measure down 2 1/2". Draw a 1/2" by 6 1/2" box. Draw a centre line lengthwise down the box, stopping 1/2" from either end. Draw lines to each corner.



Flip main panel lining piece right side up, centre the 8" side of one **pocket lining** right side down over the box you just drew, 1½" from the edge of the main panel. Pin in place, flip main panel over to wrong side and sew along box lines to attach pocket lining.

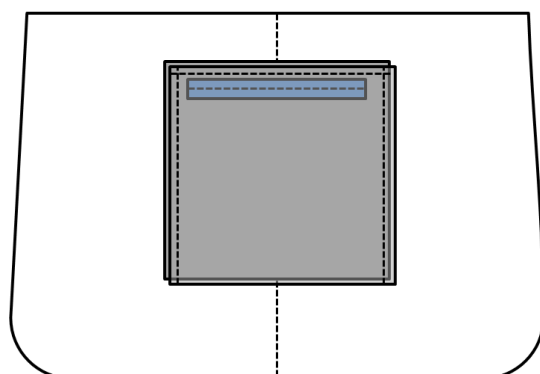


Cut along the centre line and corner lines, making sure you don't cut stitching. Pull



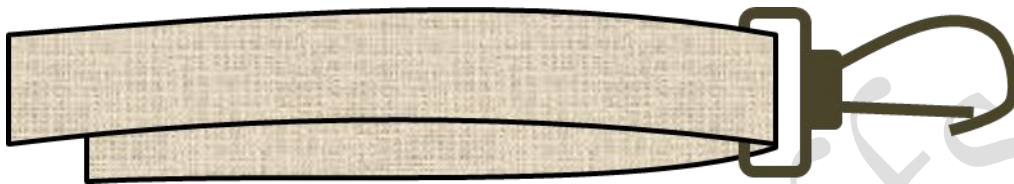
pocket lining from the right side to the wrong side through the hole you cut and press neatly. Centre the 7" zipper in the box on the wrong side, top stitch zipper to the box from the right side of the main panel. Trim any excess zipper away from stitching.

Pin the other pocket lining piece to the edge of the first pocket lining piece above the zipper installation. Stitch a ¼ inch seam across the top and down both sides of pocket lining pieces, **do not** stitch pocket lining to main panel or stitch across the bottom of the pocket lining. **Leave zipper open for turning the bag.**

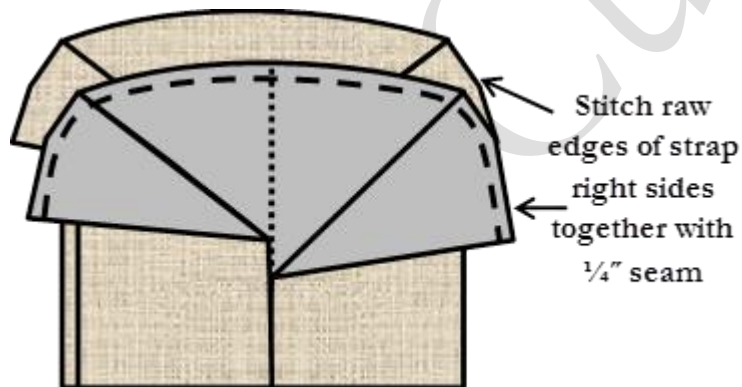


5. Connector and wristlet strap

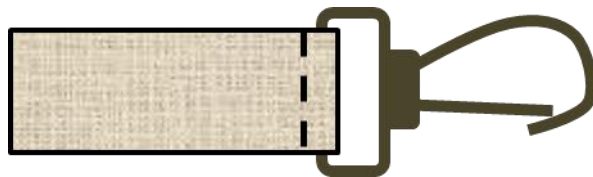
Fold **strap** piece wrong sides together in half lengthwise, press. Open back up and fold both sides in so raw edges are against original fold, press again. Fold both sides in again and press; strap should now measure $\frac{3}{4}$ " wide. Slide strap through the swivel snap hook.



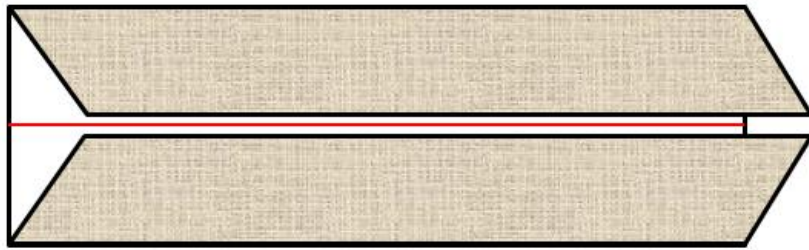
Fold both raw ends open flat and pin right sides together, stitch with a $\frac{1}{4}$ " seam.



Fold strap so that it is $\frac{3}{4}$ " wide again, topstitch around both long edges at $\frac{1}{8}$ ", moving hook out of the way as you go. Fold the strap in half, move hook into the fold and stitch next to hardware, backstitching at both sides.

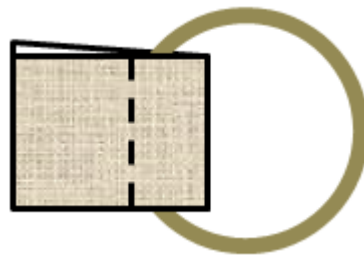


Fold **strap connector** wrong sides together in half lengthwise, press. Open back up and fold both sides in so raw edges are against original fold, press again.



Do not do the third step in folding that you did with the strap. Connector will be $\frac{3}{4}$ " wide. Fold connector in half lengthwise with raw edges together, the connector will now be two layers thick instead of four.

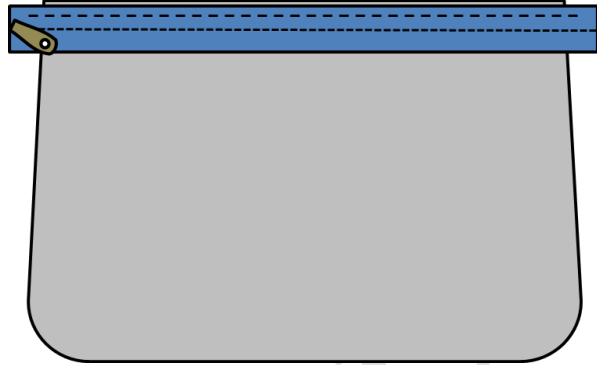
Slide the O ring hardware into the fold and stitch across the connector using a zipper foot.



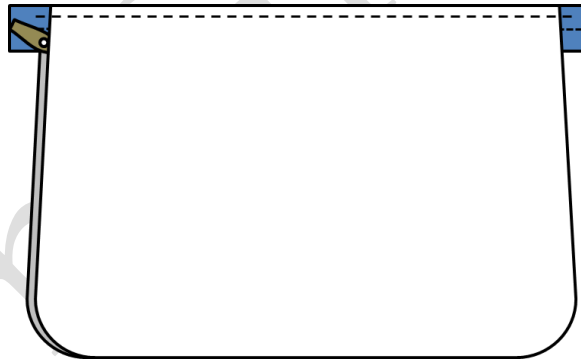
Construction of Bag

6. Attach exterior to lining

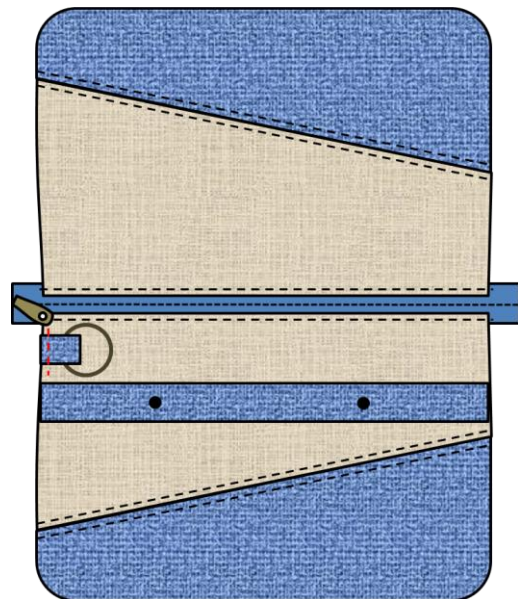
Pin/clip 12" zipper right side up on the top raw edge of the lining main panel. Stitch a 1/4" seam along the zipper, moving zipper pull out of the way.



Pin/clip exterior main panel to the other side of the zipper (the wrong side), and stitch with a 1/4" seam again. You can also flip the piece and follow the first row of stitching you did to the lining. **Repeat** to the other side of the zipper.



Topstitch along the two main panel exterior pieces along the zipper, making sure you don't stitch the lining pieces.

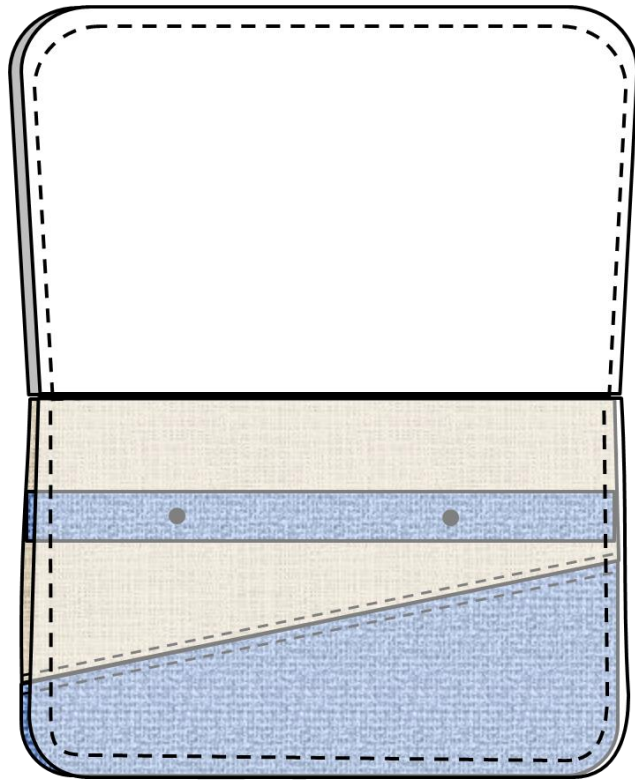


Baste connector to one of the exterior main panels 1/2" down from the zipper on the side where the zipper pull sits when closed. Don't stitch through the lining.

Leave zipper 3/4 of the way open.

Pin/clip main panel exterior pieces right sides together, **repeat** to the main panel lining pieces, the zipper teeth should be pushed down towards the lining.

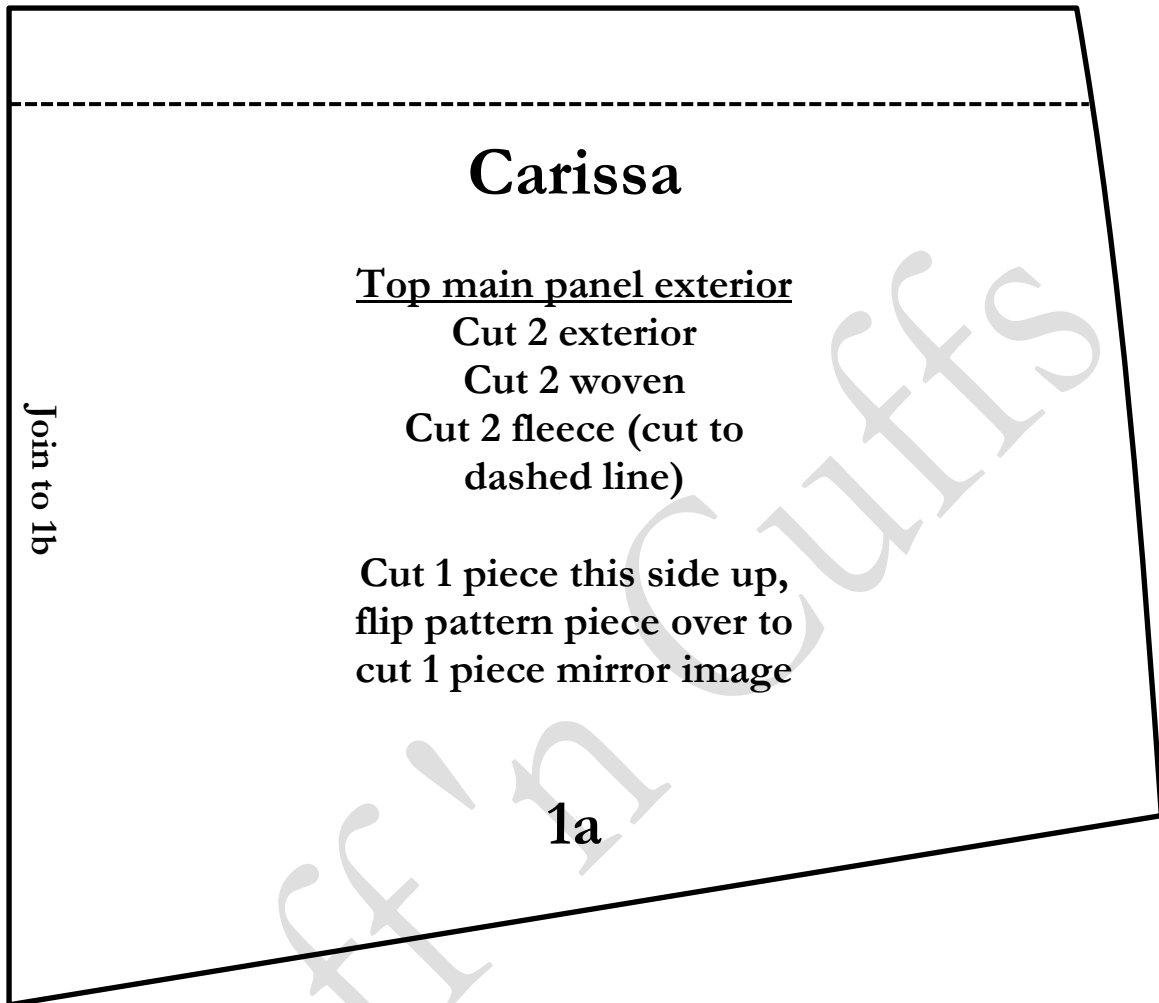
Use a 3/8" seam, stitch around all four edges of the clutch. You can do a 1/2" seam on the lining to get a better fit. Clip curves and trim seam down to 1/4". Turn bag through the bottom open edge of the lining pocket.



Press clutch if needed, avoiding any vinyl. Fold seam on open edge of pocket and straight stitch close to the edge to close, backstitching at both ends. Attach strap to the O ring with the snap hook.

The Carissa Clutch is now finished!

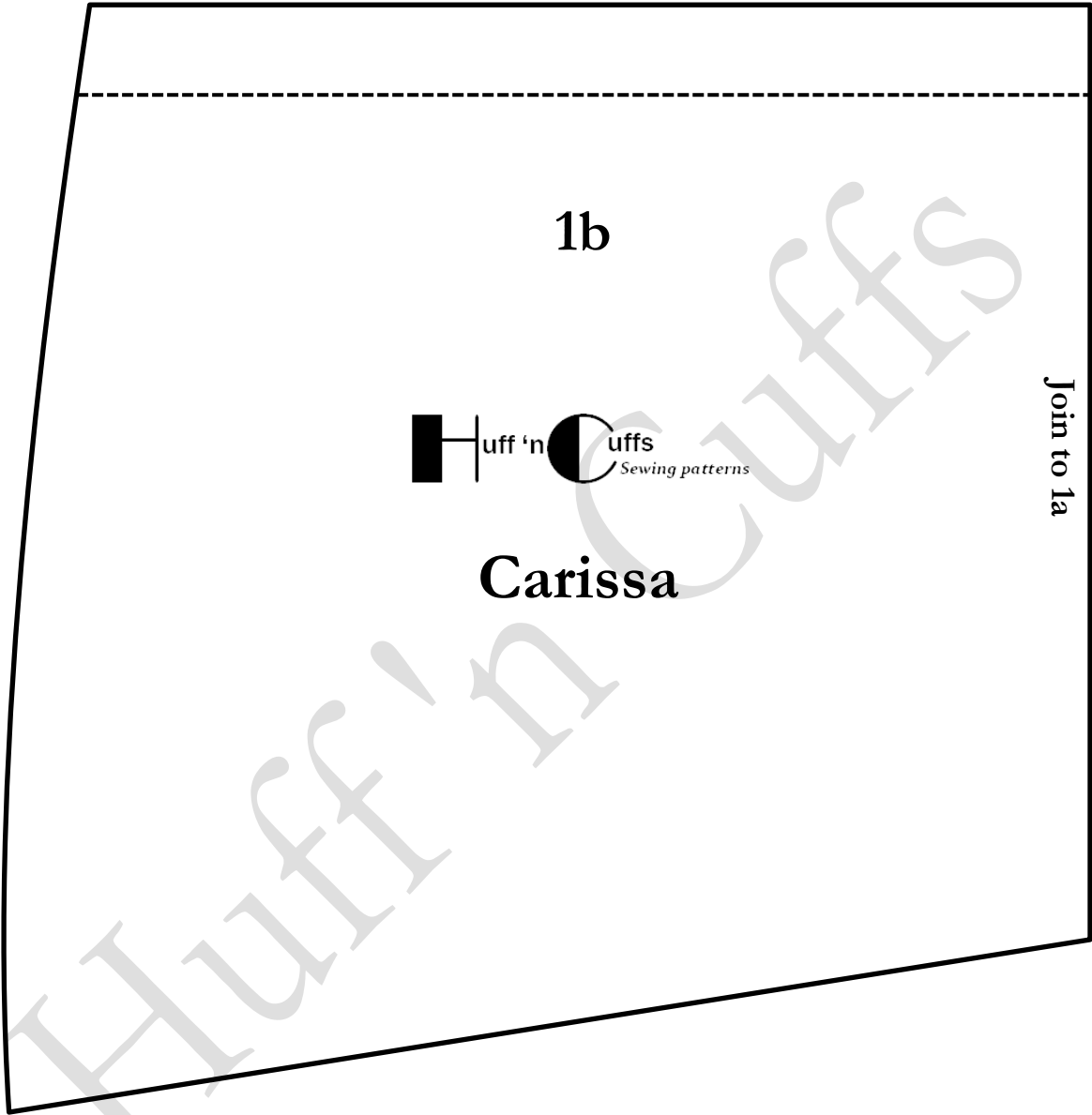
Pattern Pieces

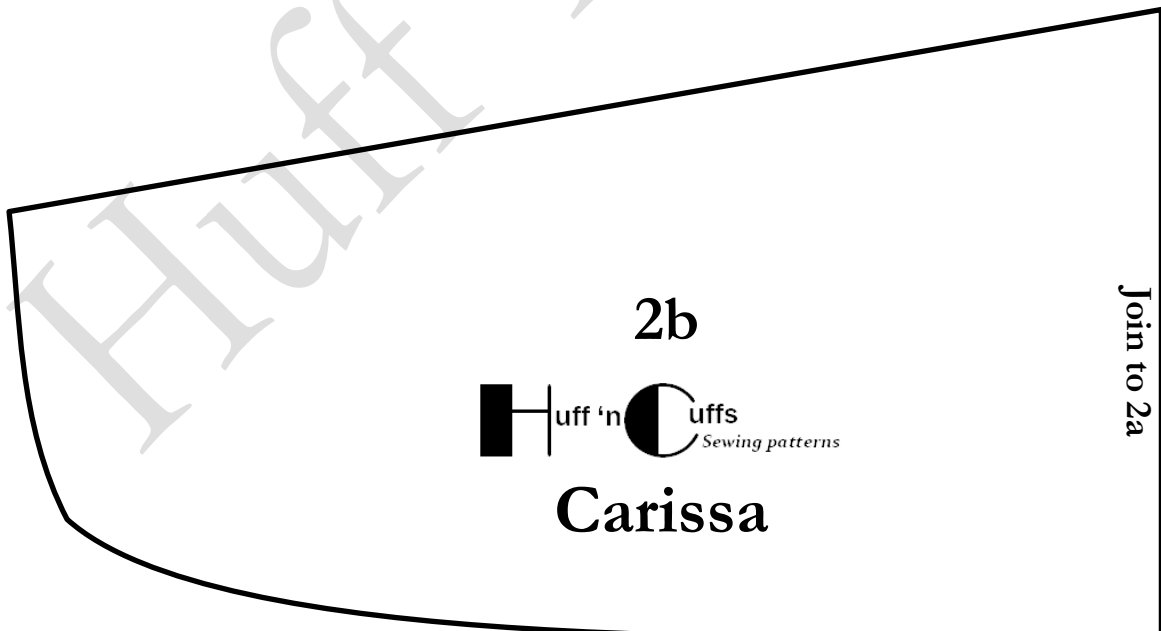
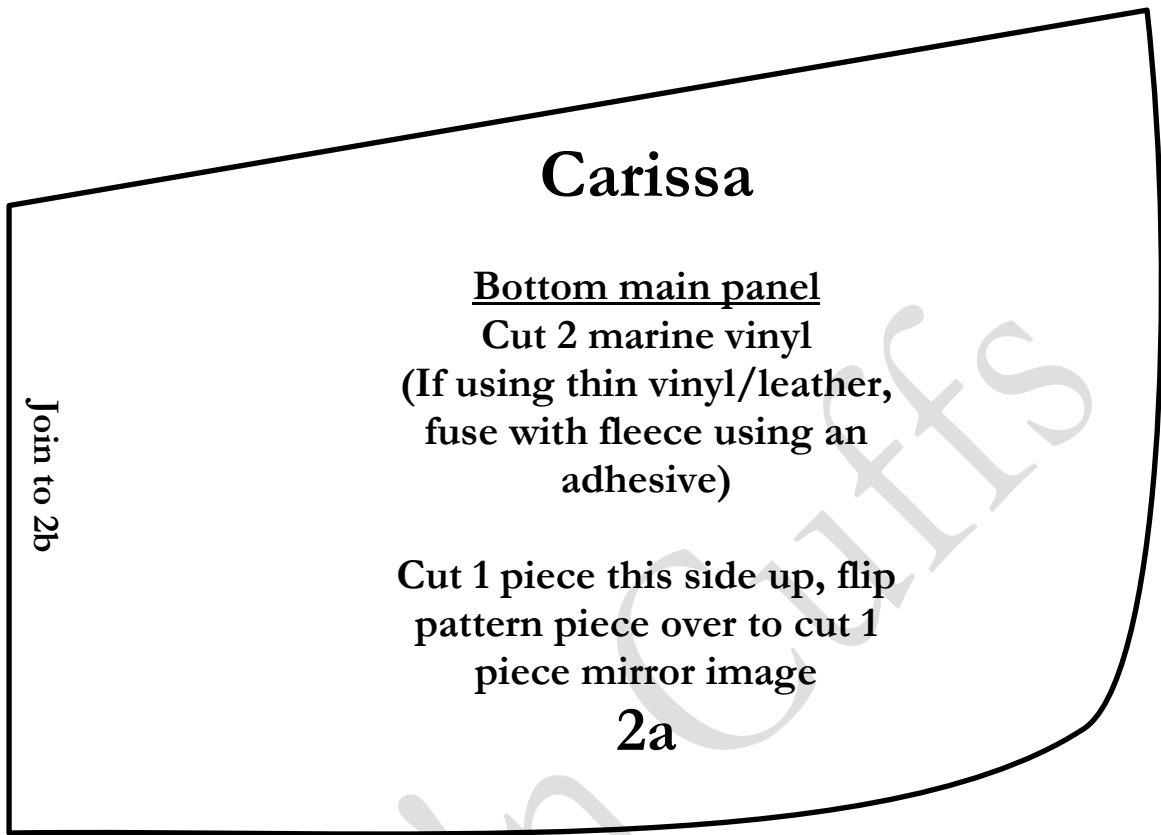


Print Test

Square

2" x 2"





Carissa

Main panel lining

Cut 1 lining

Cut 1 woven

3



↑
Cut on Fold
↓

Carissa

Side panel lining

Cut 2 lining

Cut 2 woven

Cut 1 piece this side
up, flip pattern piece
over to cut 1 piece
mirror image

4

