

FROTTEE PANTS

Gr.122/128

hinteres Hosenteil

2x gegengleich zuschneiden

© 2014 hamburgerliebe.com | Susanne Firmenich
Nur für den privaten Gebrauch!

Nähanleitung:
<http://hamburgerliebe.blogspot.de/p/anleitungen-tutorials.html>

 Kontrollkästchen

— mit 1cm Nahtzugabe zuschneiden

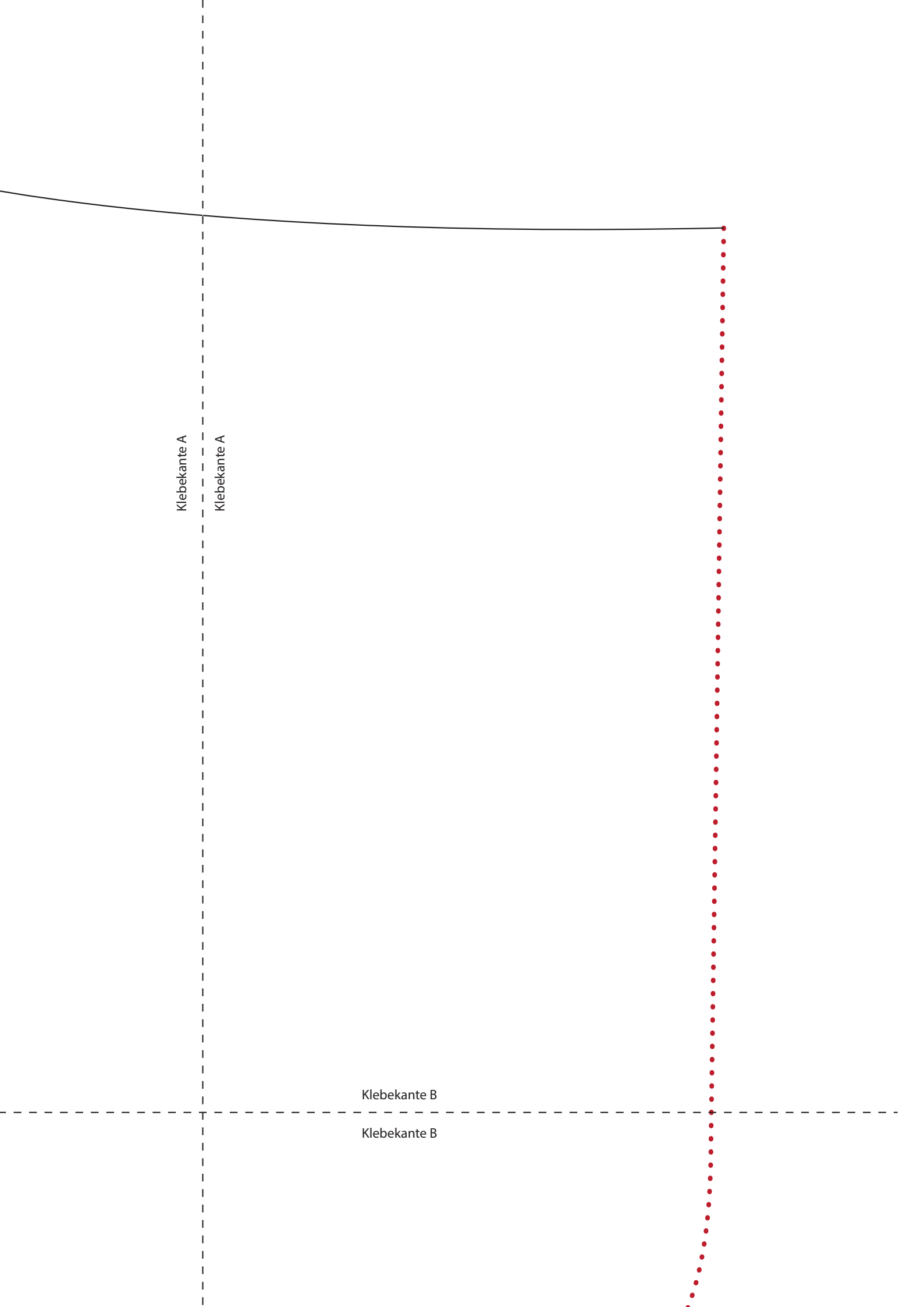
•••• ohne Nahtzugabe zuschneiden

Klebekante B

Klebekante B

Klebekante A

Klebekante A



Klebekante A

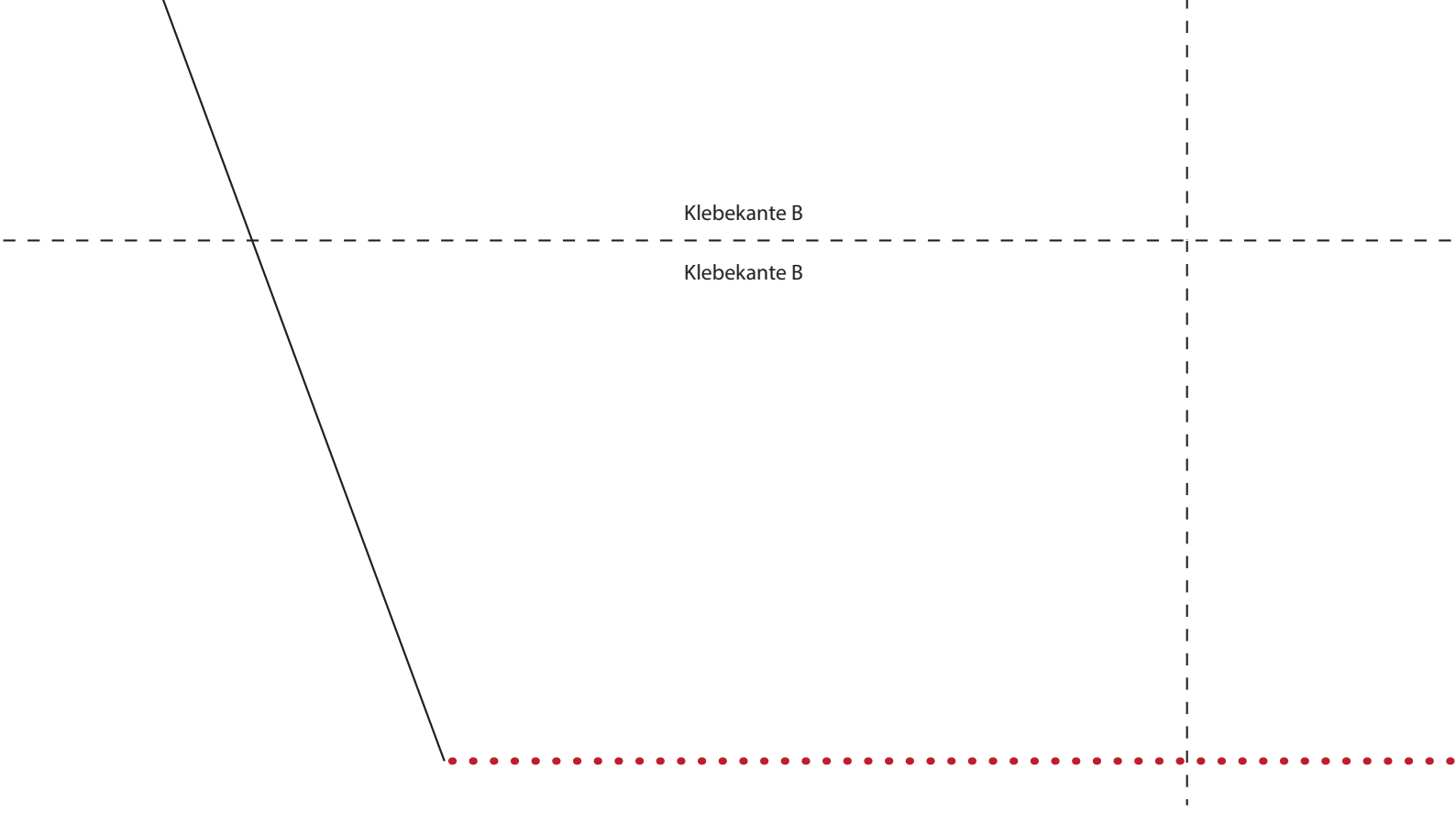
Klebekante A

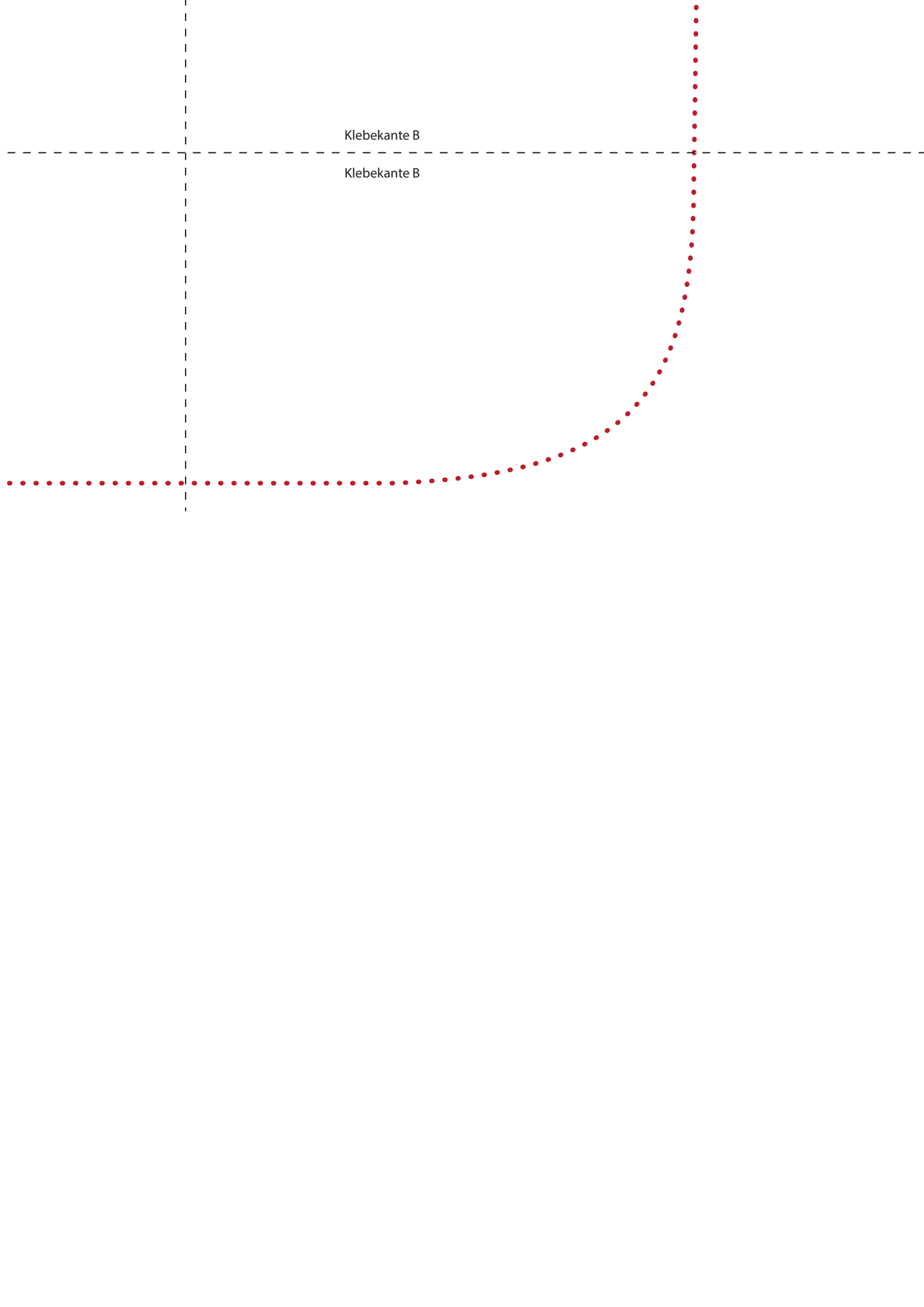
Klebekante B

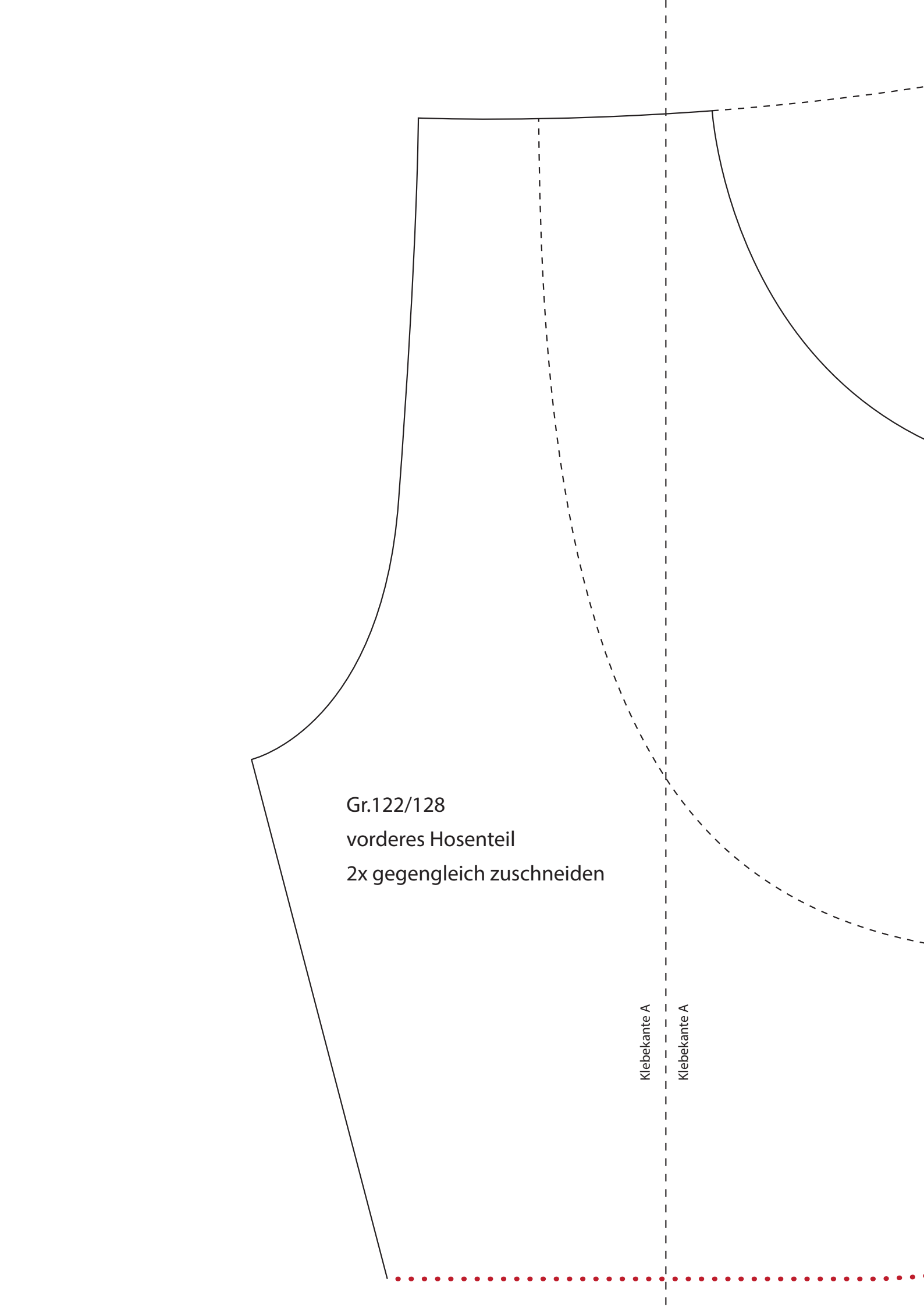
Klebekante B

Klebekante B

Klebekante B





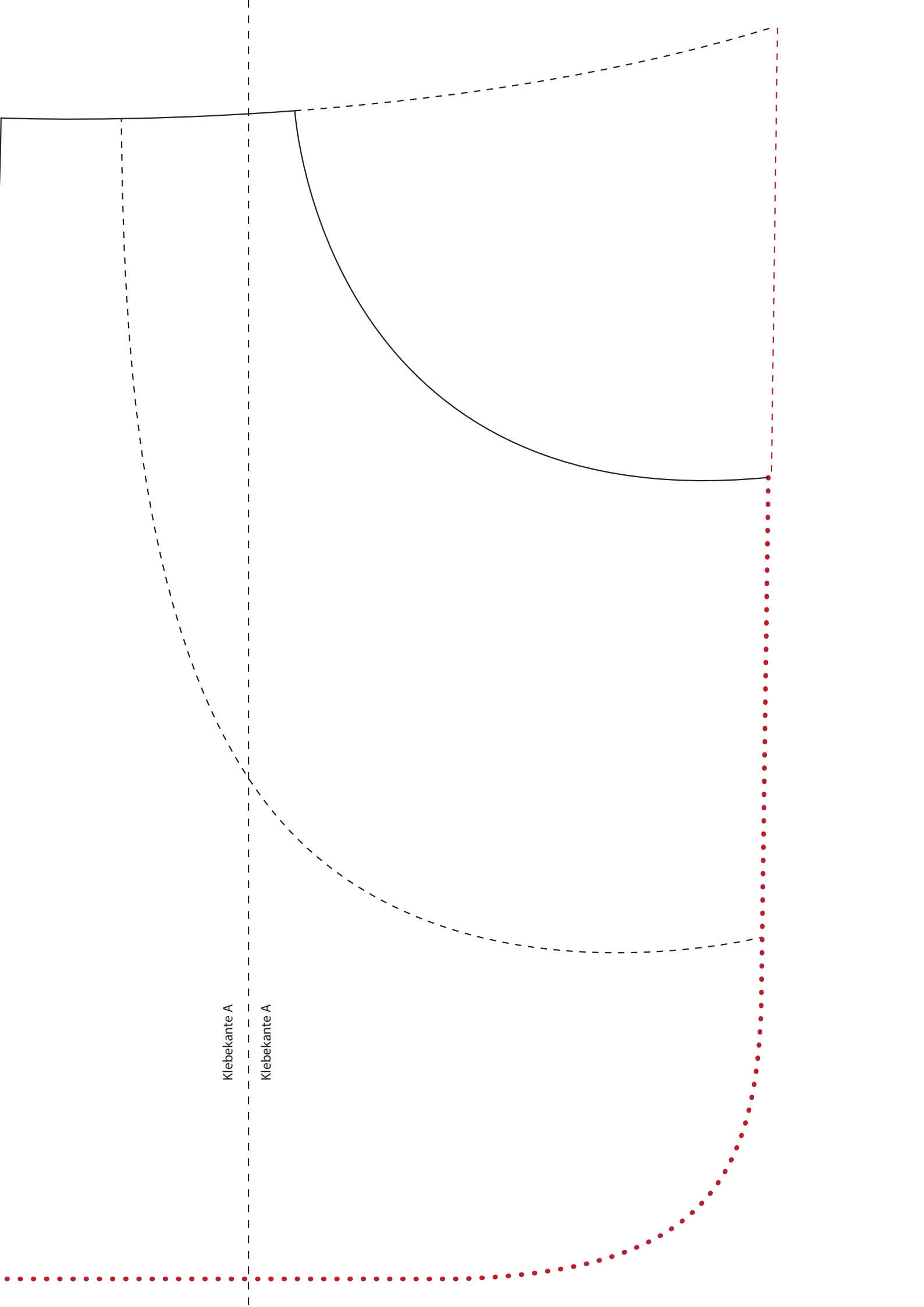


Gr.122/128
vorderes Hosenteil
2x gegengleich zuschneiden

The image shows a technical drawing of a pair of trousers pattern piece. It features a solid black outline for the main body and a dashed line for a curved side seam. A vertical dashed line is positioned near the center, and a red dotted line is at the bottom. Text labels are placed within the pattern area.

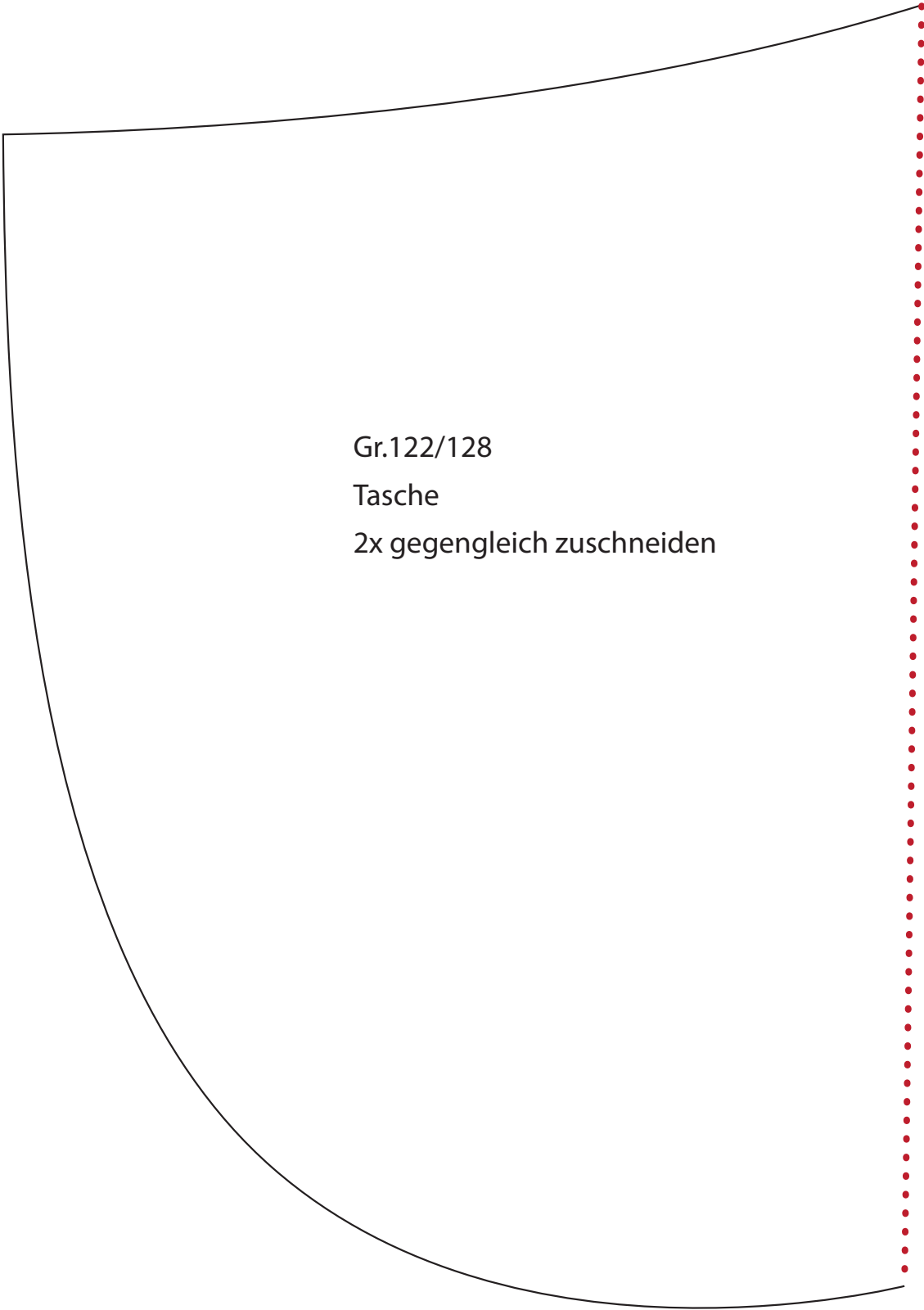
Klebekante A

Klebekante A



Klebekante A

Klebekante A



Gr.122/128

Tasche

2x gegengleich zuschneiden