

sew

Issue 109 April 2018

PRINT
OUT
& KEEP

GINA JACKET TEMPLATE

Use these guides to get started today

IN YOUR PRINT MENU, UNDER SIZE OPTIONS, BE SURE TO
SELECT TO PRINT 'ACTUAL SIZE', INSTEAD OF 'FIT TO PAGE'

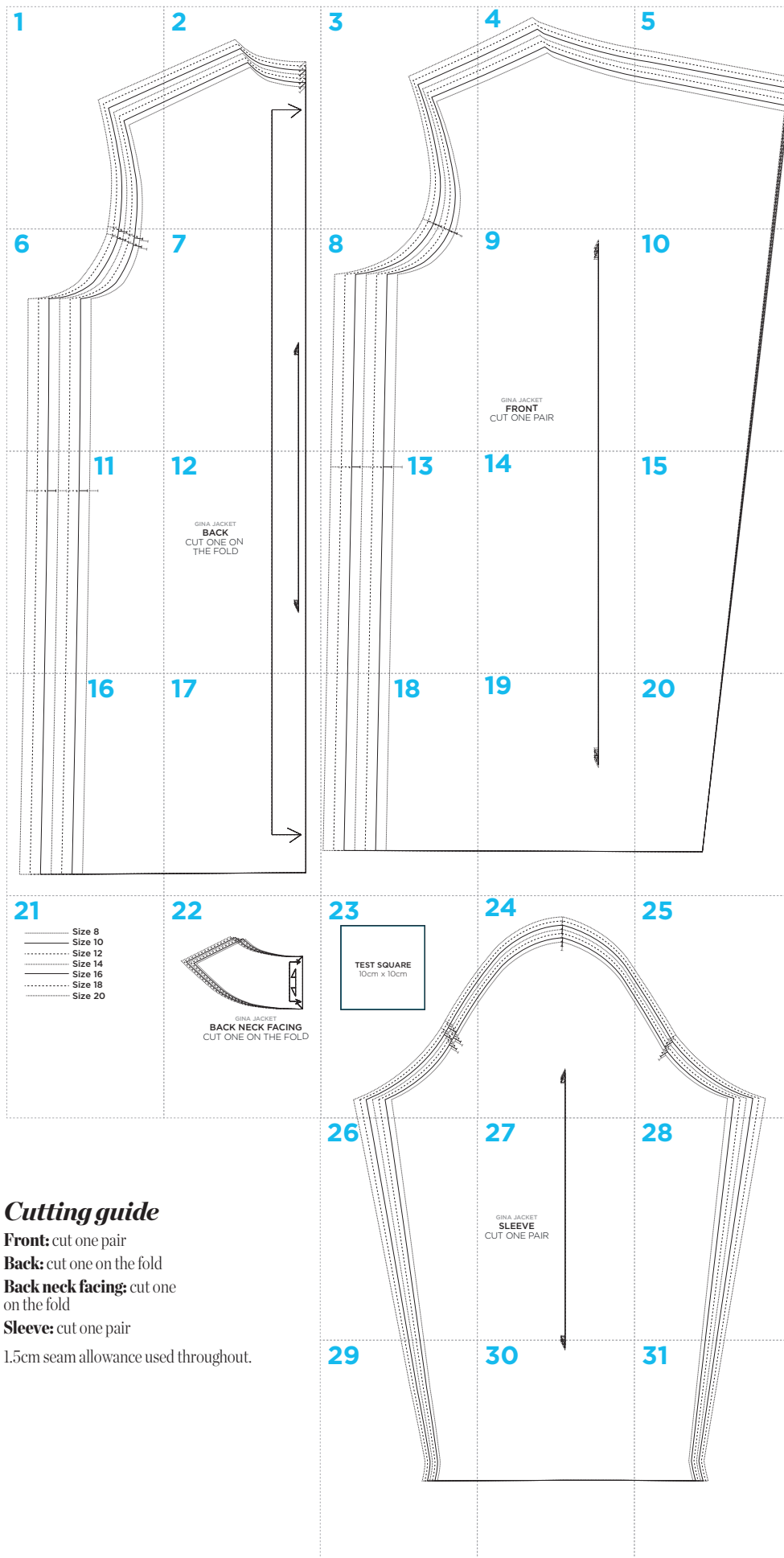
Title: Gina jacket
Designer: Julia Claridge
Magazine page: 22



© ACEVILLE PUBLICATIONS LTD | SEWMAG.CO.UK

All projects, templates and patterns are for personal home use only and cannot be sold or used for commercial purposes.

GINA JACKET PATTERN LAYOUT



Cutting guide

Front: cut one pair

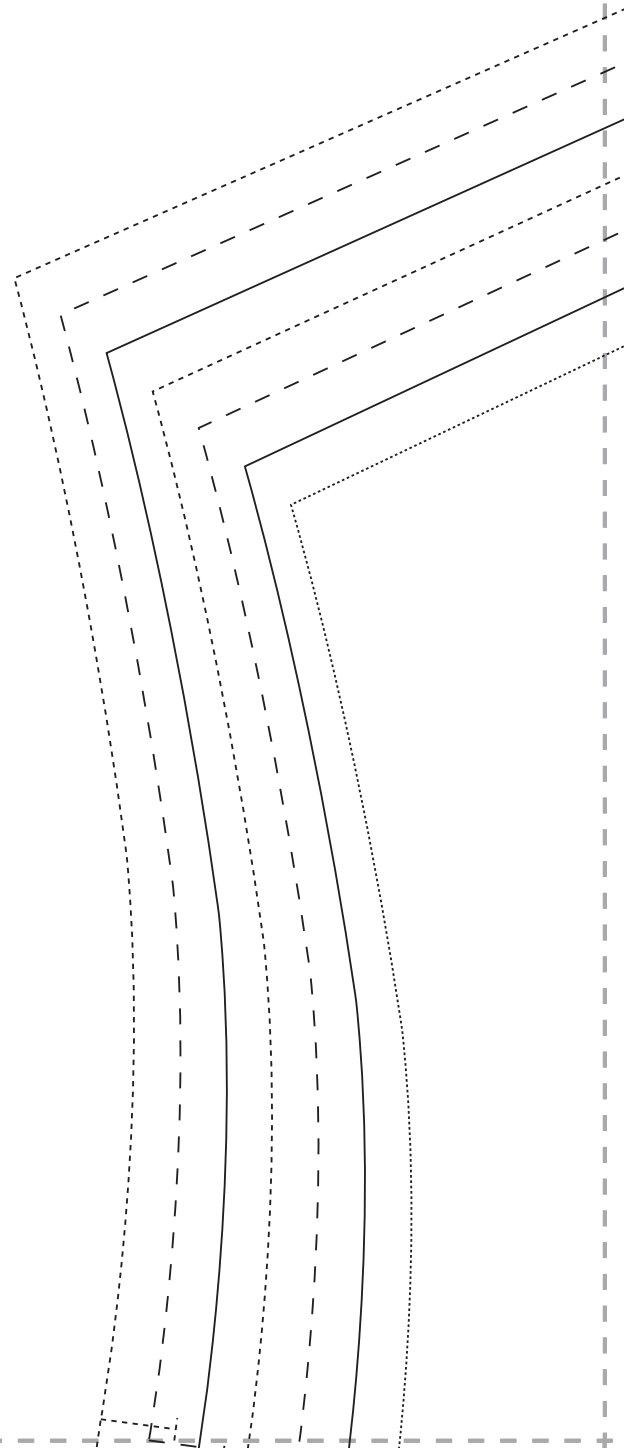
Back: cut one on the fold

Back neck facing: cut one on the fold

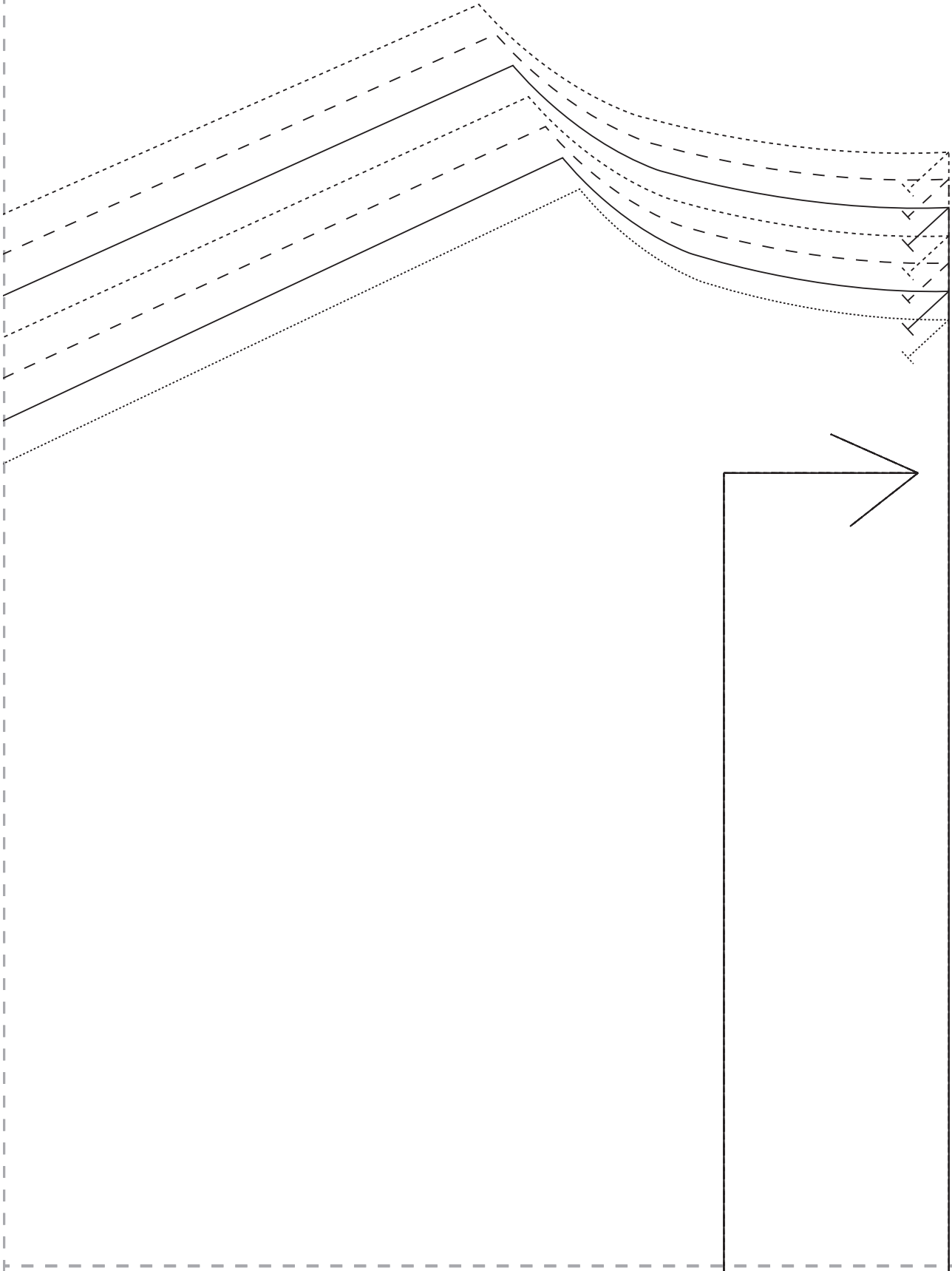
Sleeve: cut one pair

1.5cm seam allowance used throughout.

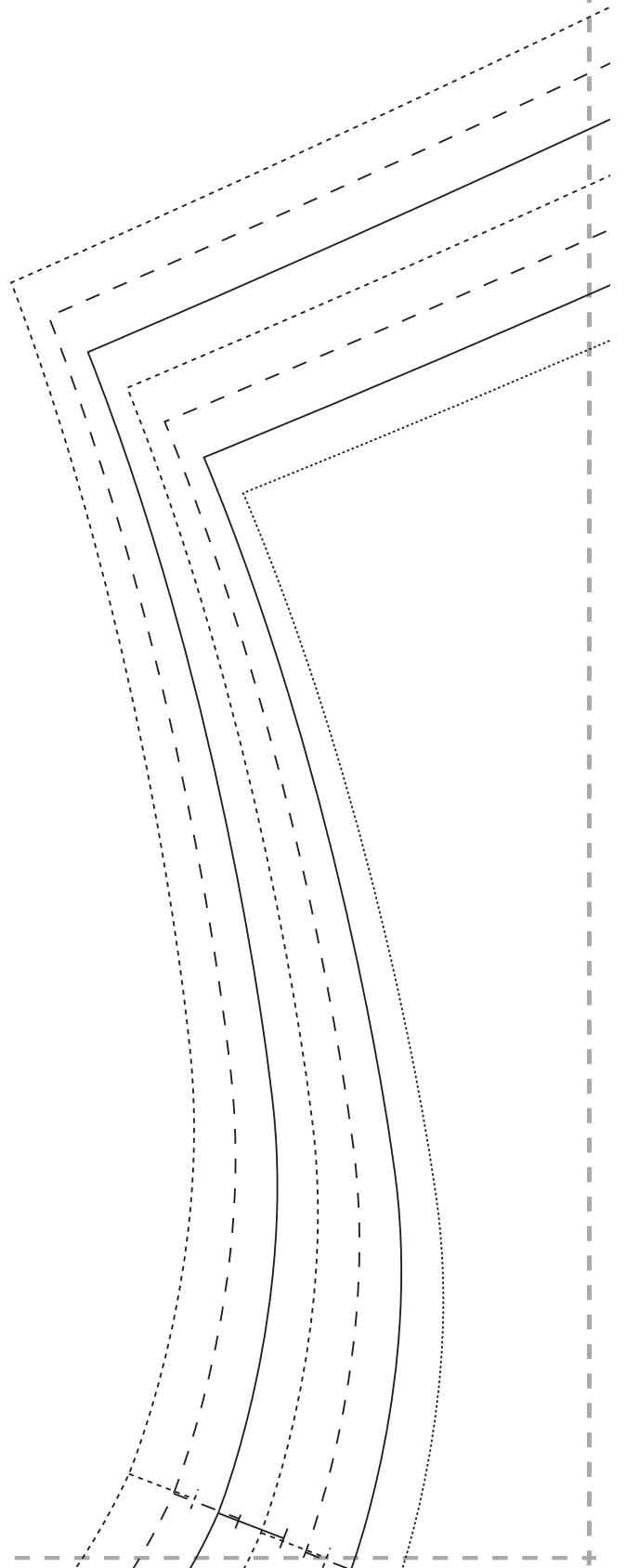
1



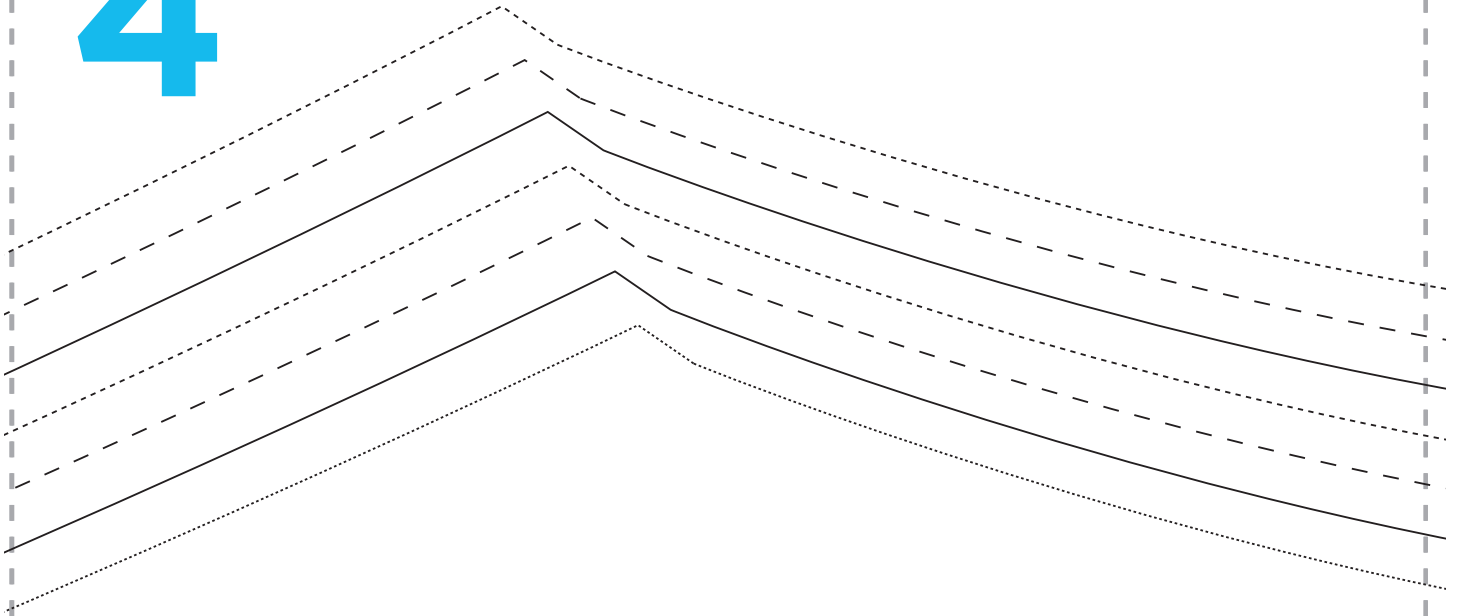
2



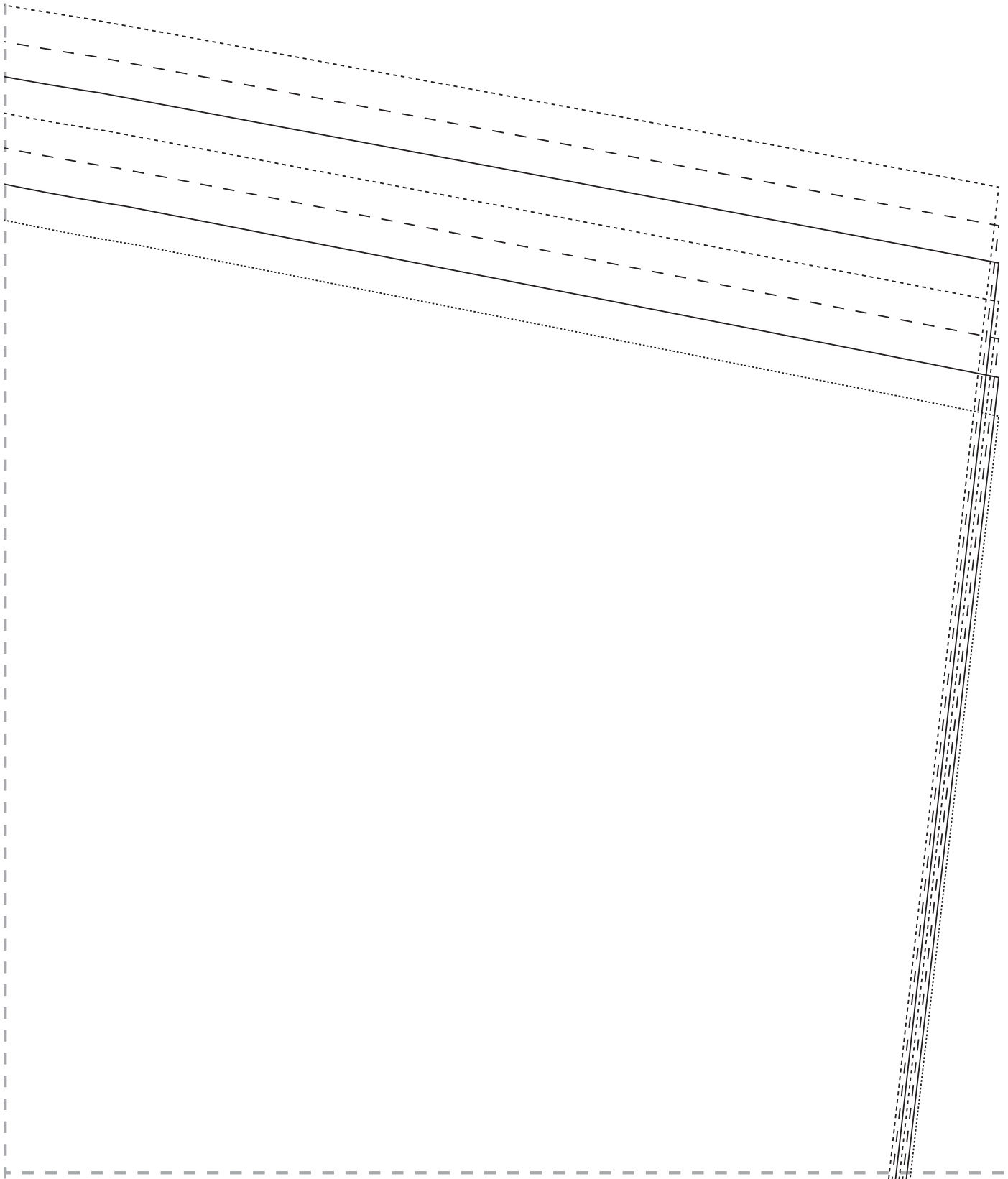
3



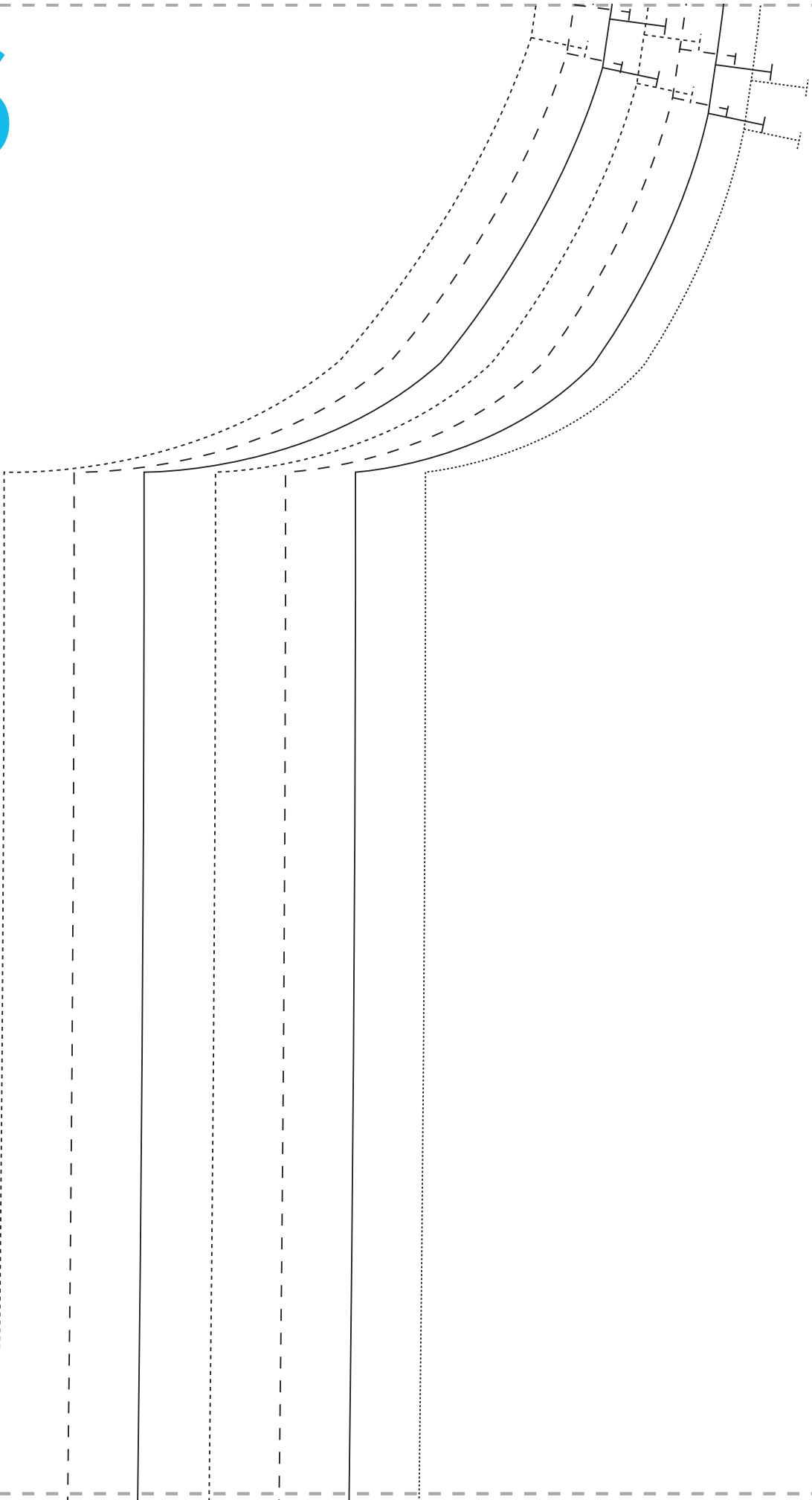
4



5



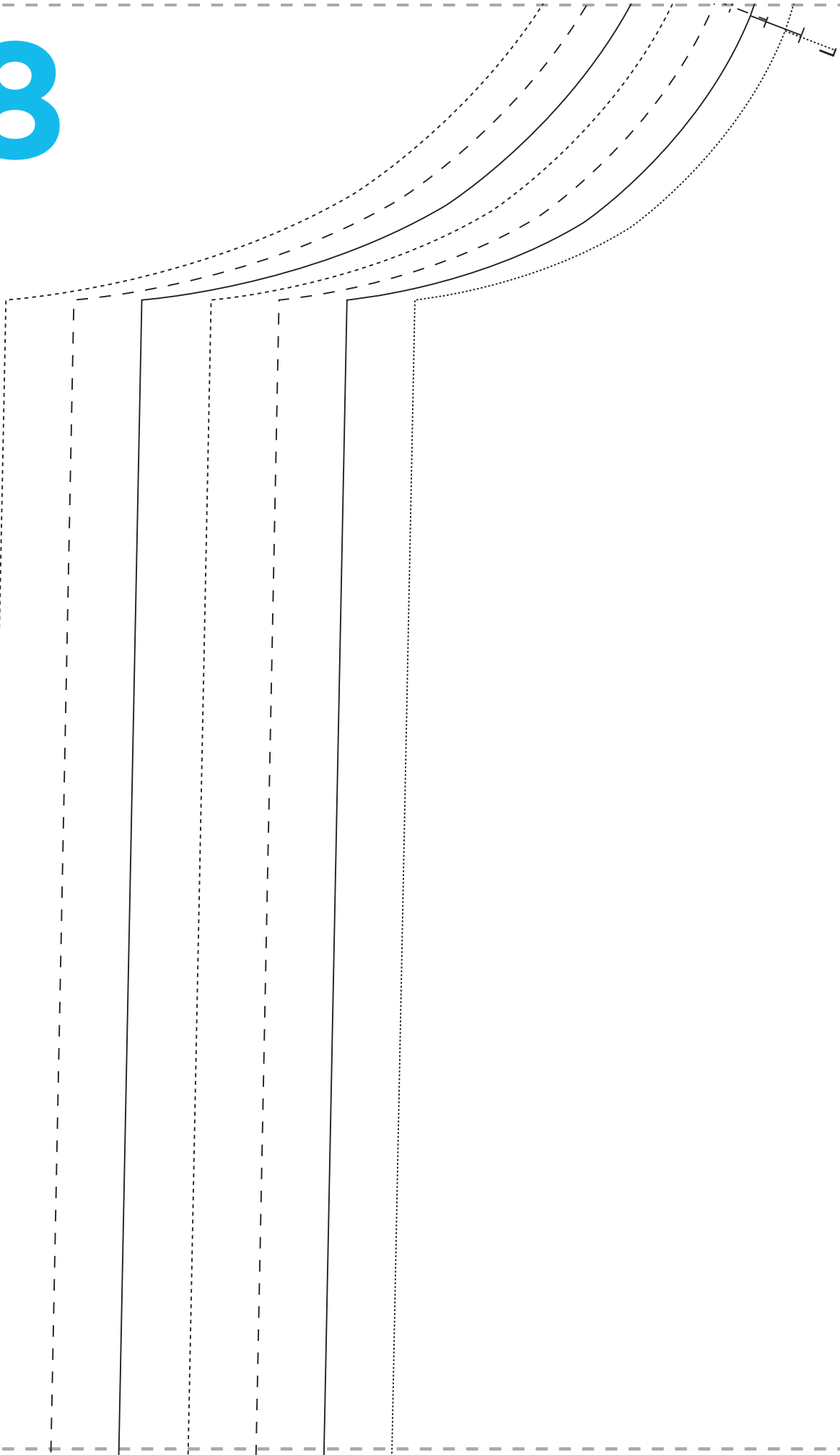
6



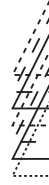
7



8

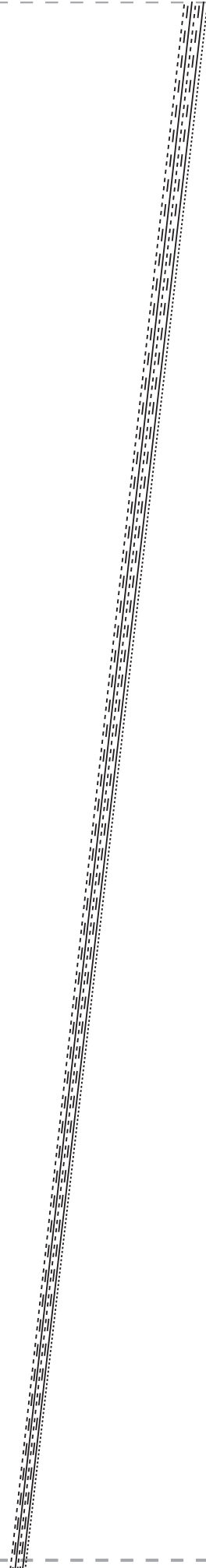


9

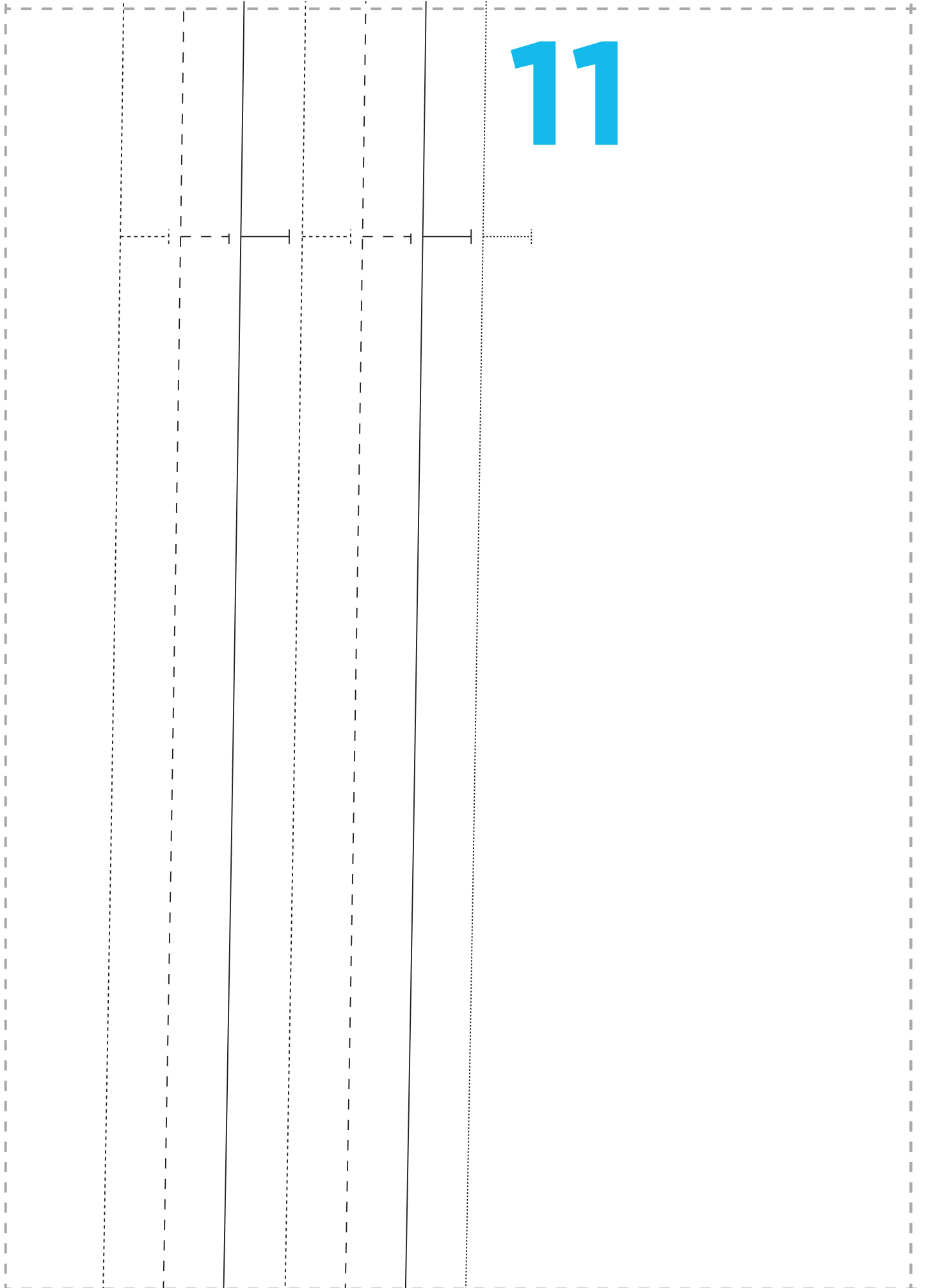


GINA JACKET
FRONT
CUT ONE PAIR

10



11

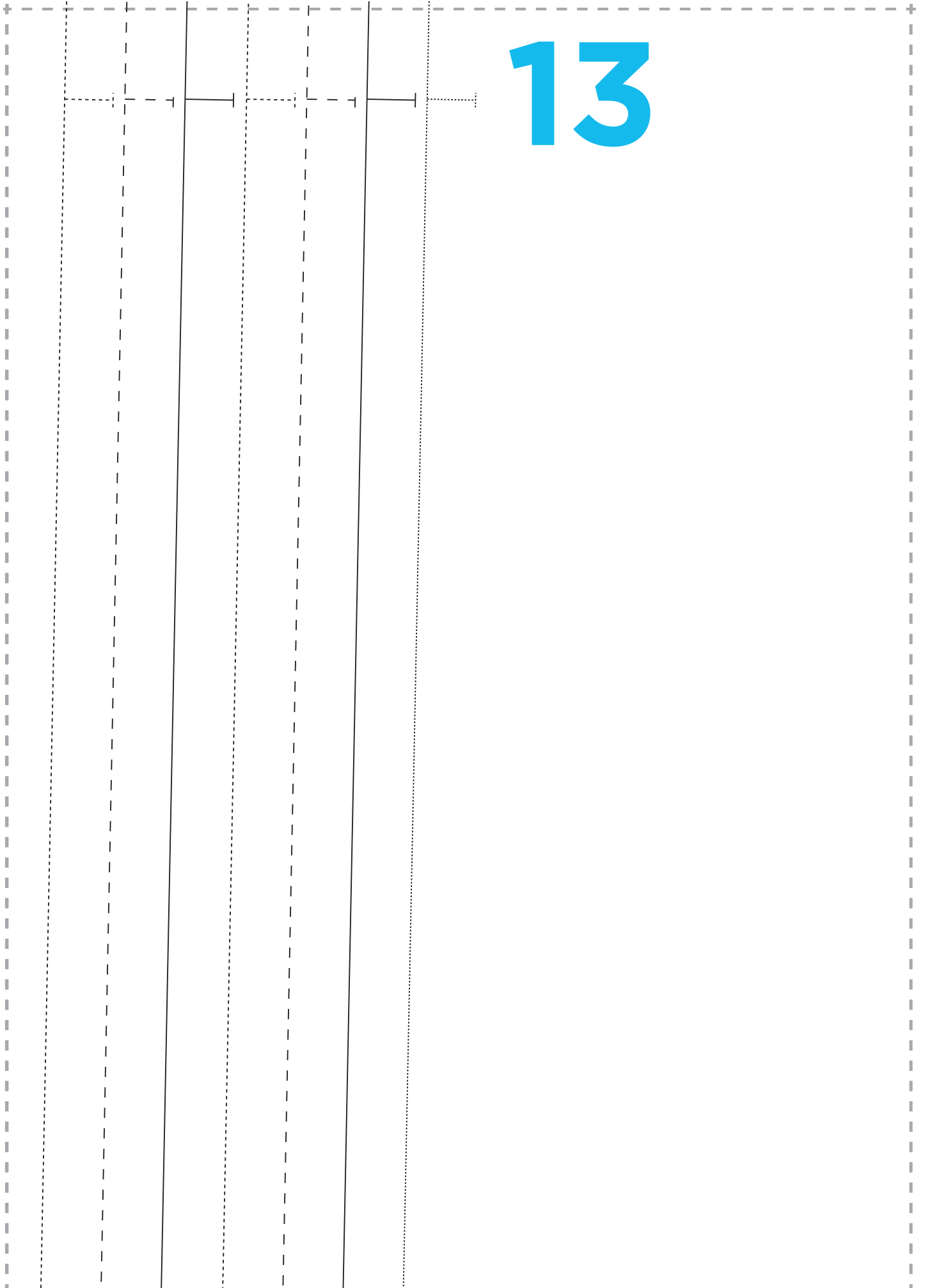


12

GINA JACKET
BACK
CUT ONE ON
THE FOLD

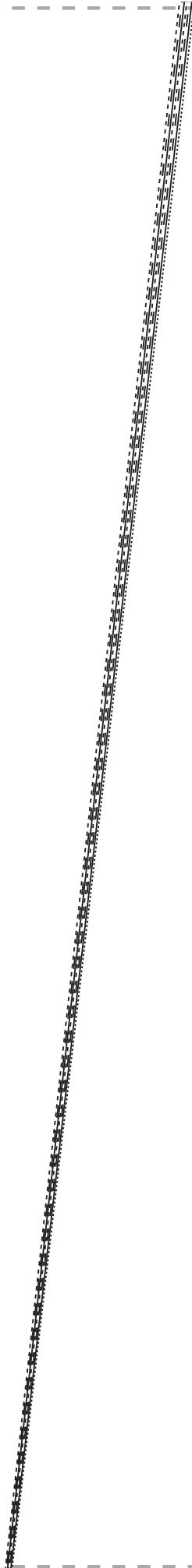


13



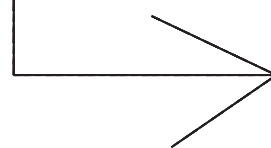
14

15



16

17

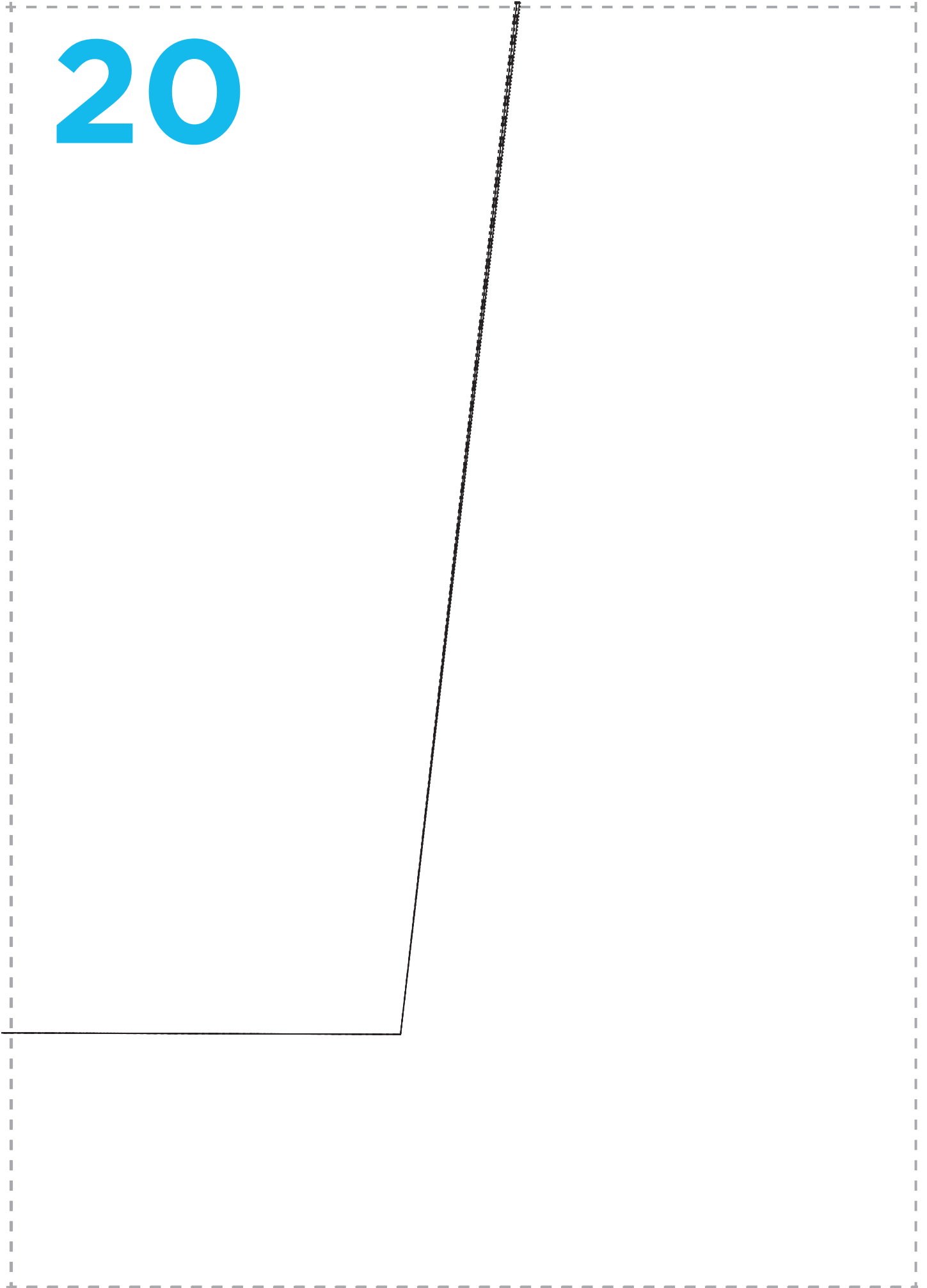


18

19



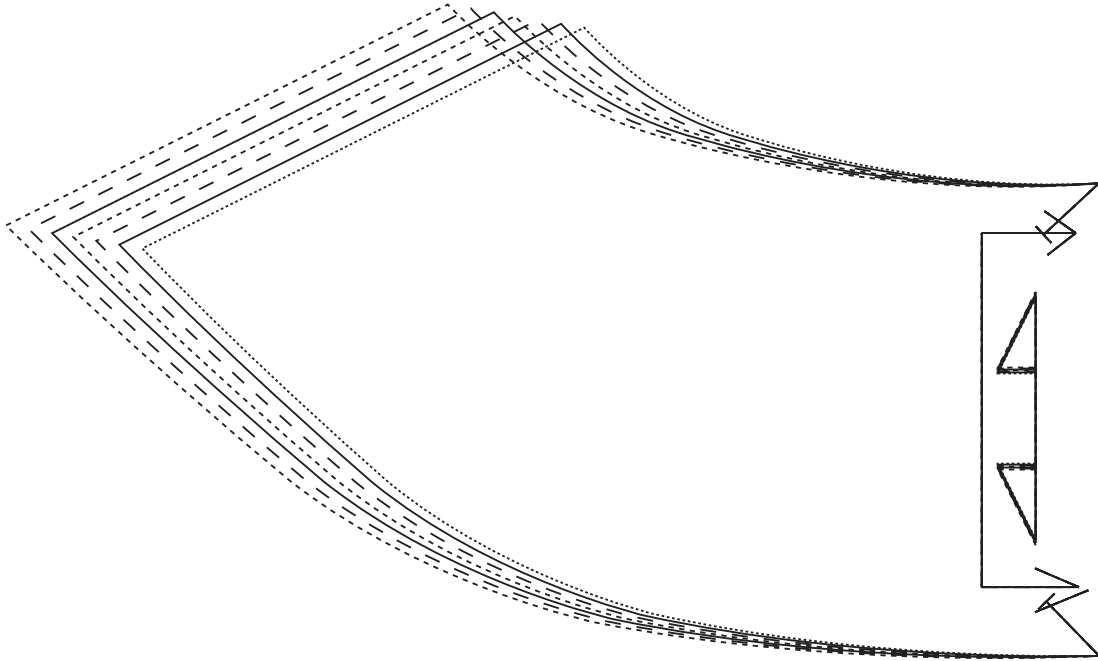
20



21

- **Size 8**
- **Size 10**
- **Size 12**
- **Size 14**
- **Size 16**
- **Size 18**
- **Size 20**

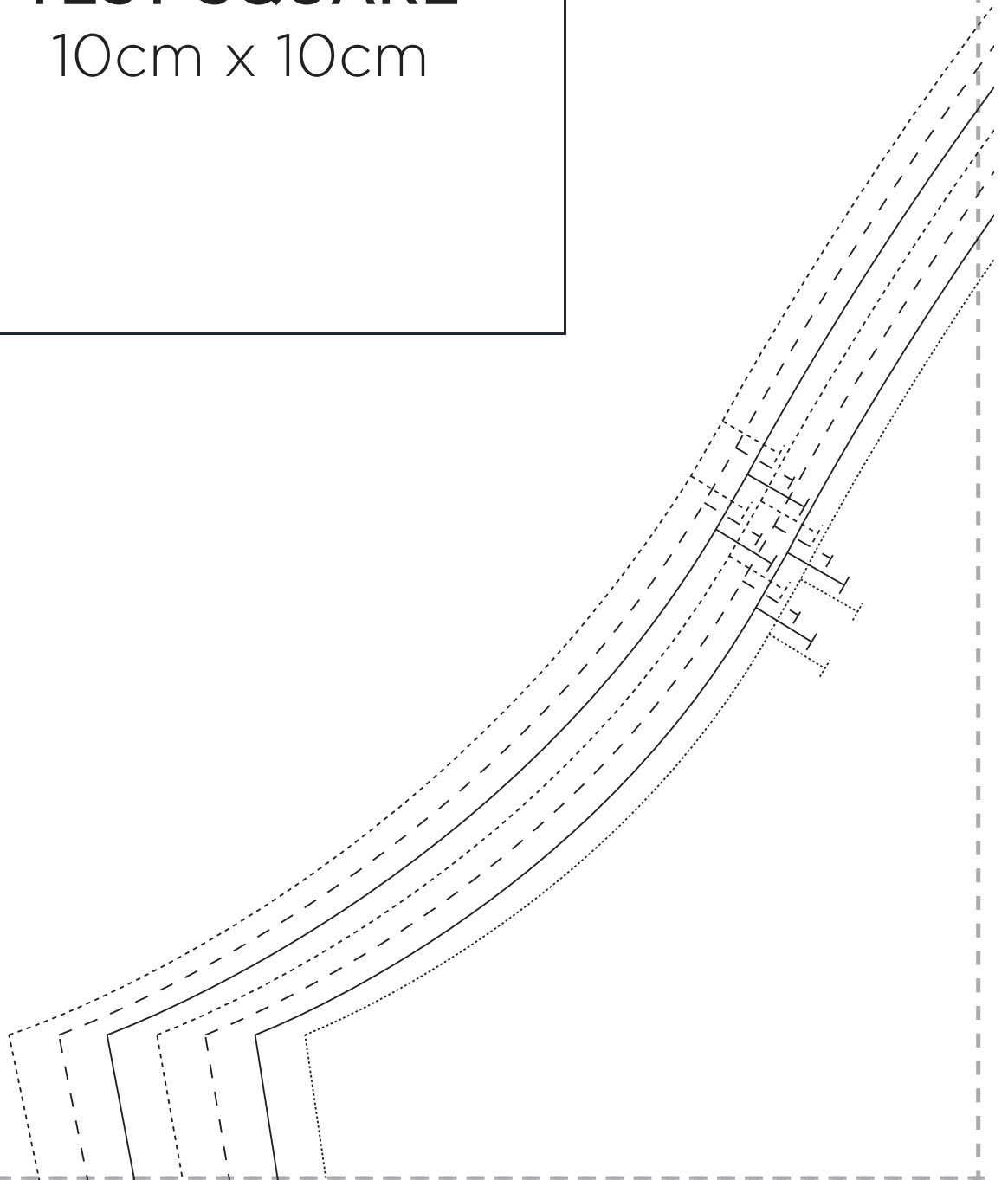
22



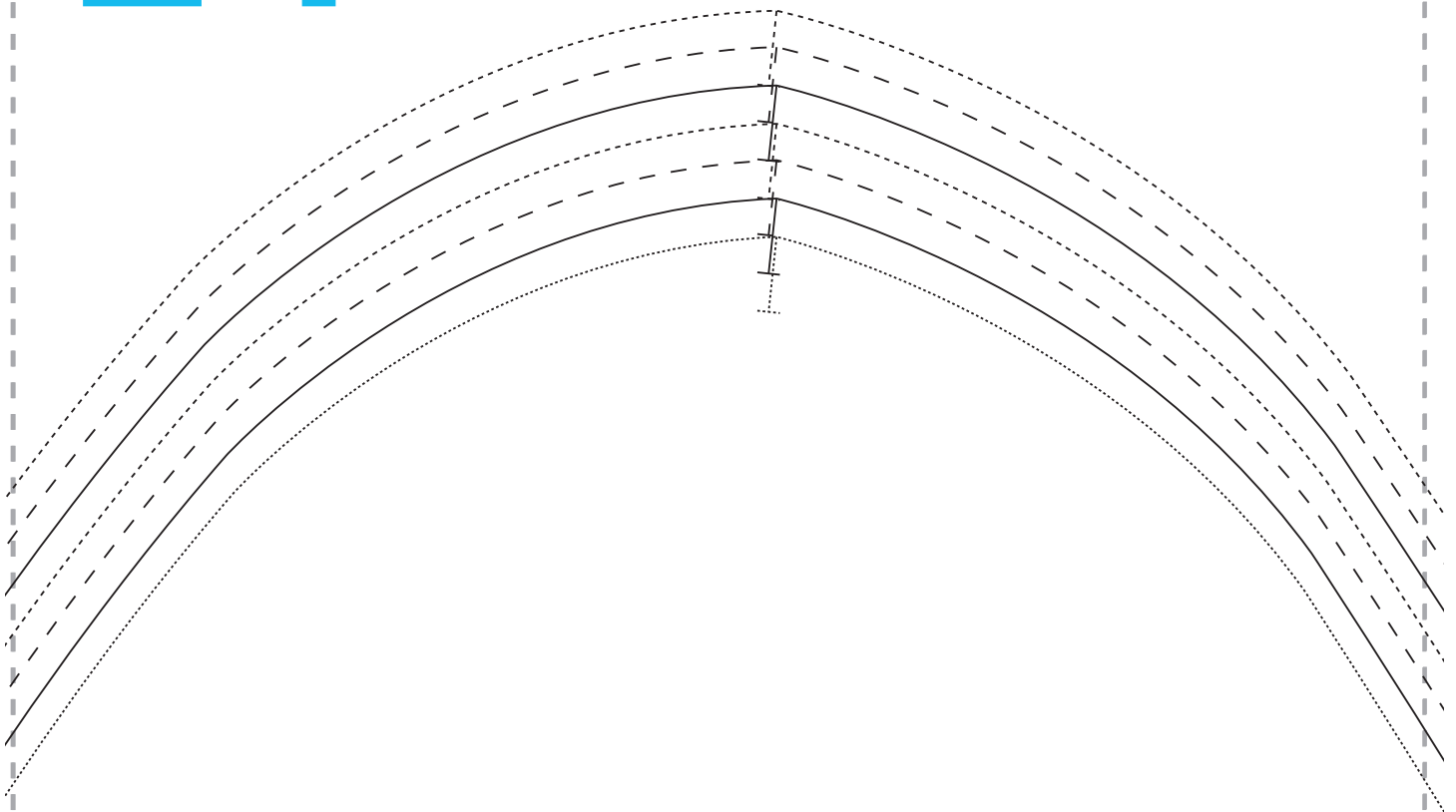
GINA JACKET
BACK NECK FACING
CUT ONE ON THE FOLD

23

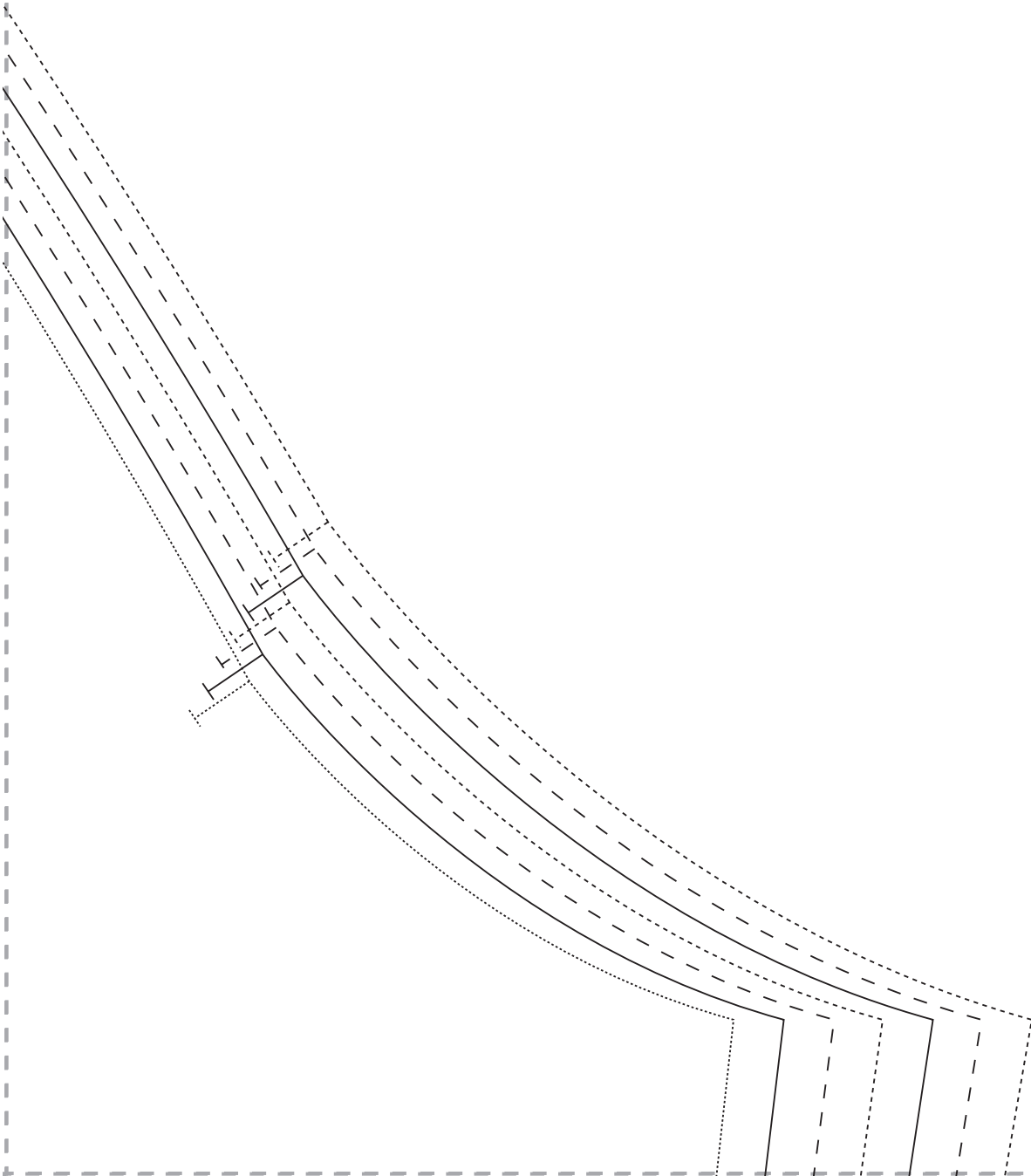
TEST SQUARE
10cm x 10cm



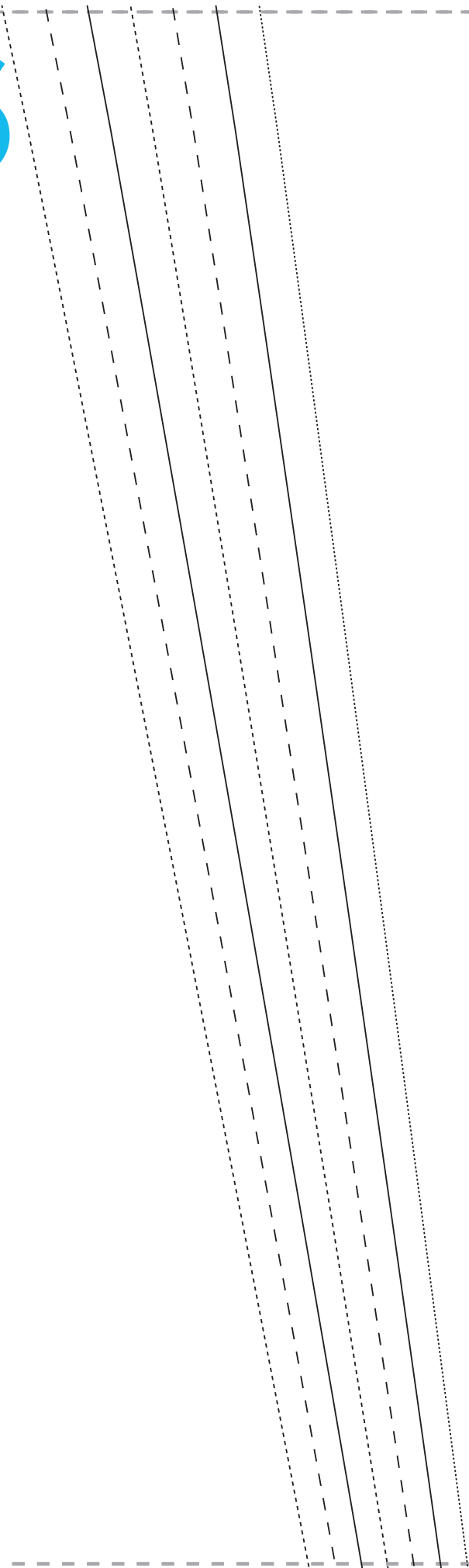
24



25



26

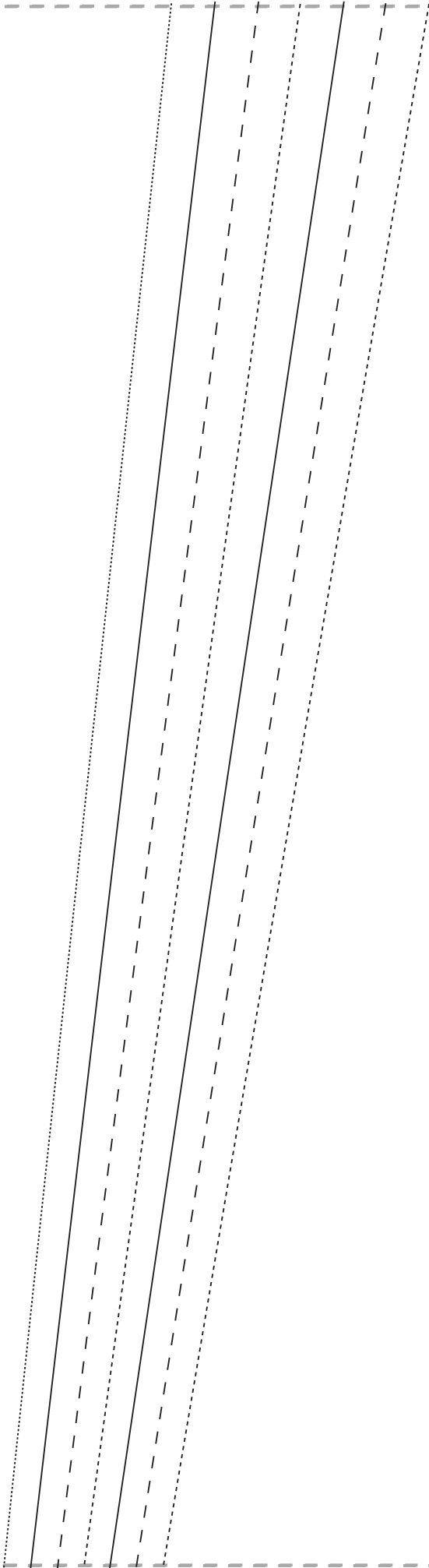


27

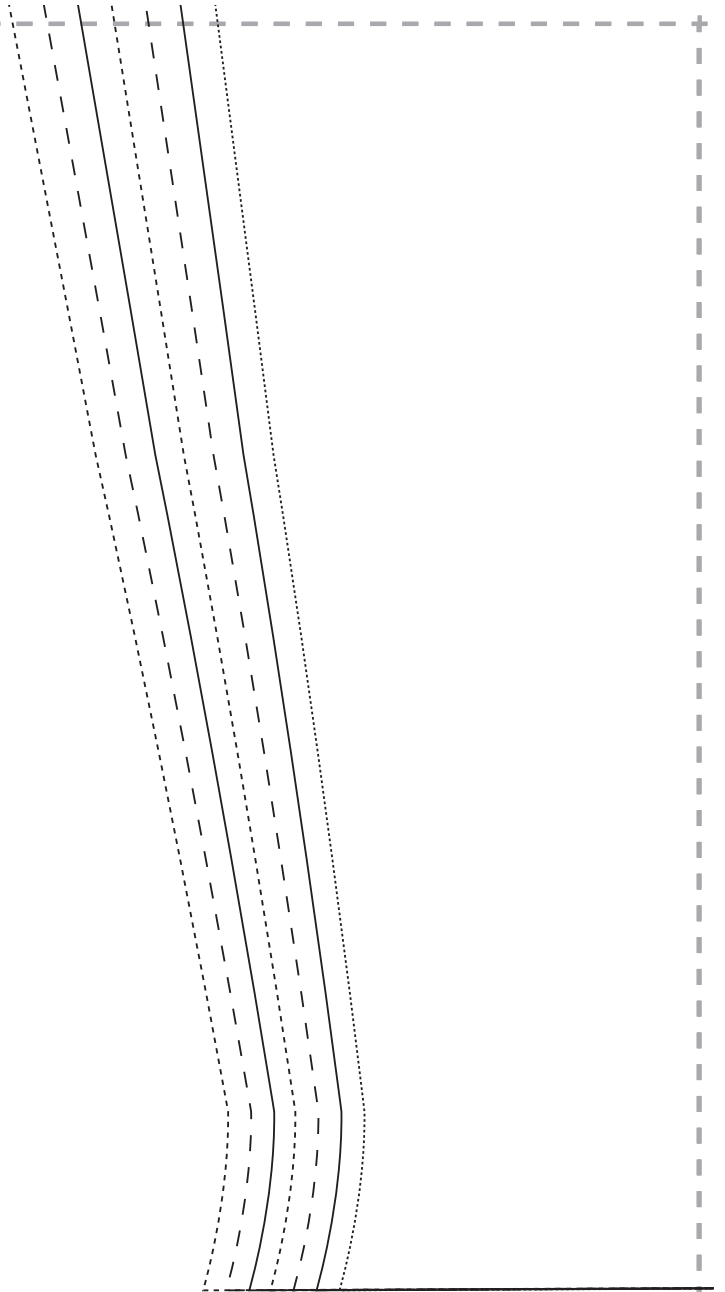
GINA JACKET
SLEEVE
CUT ONE PAIR



28



29



30



31

