

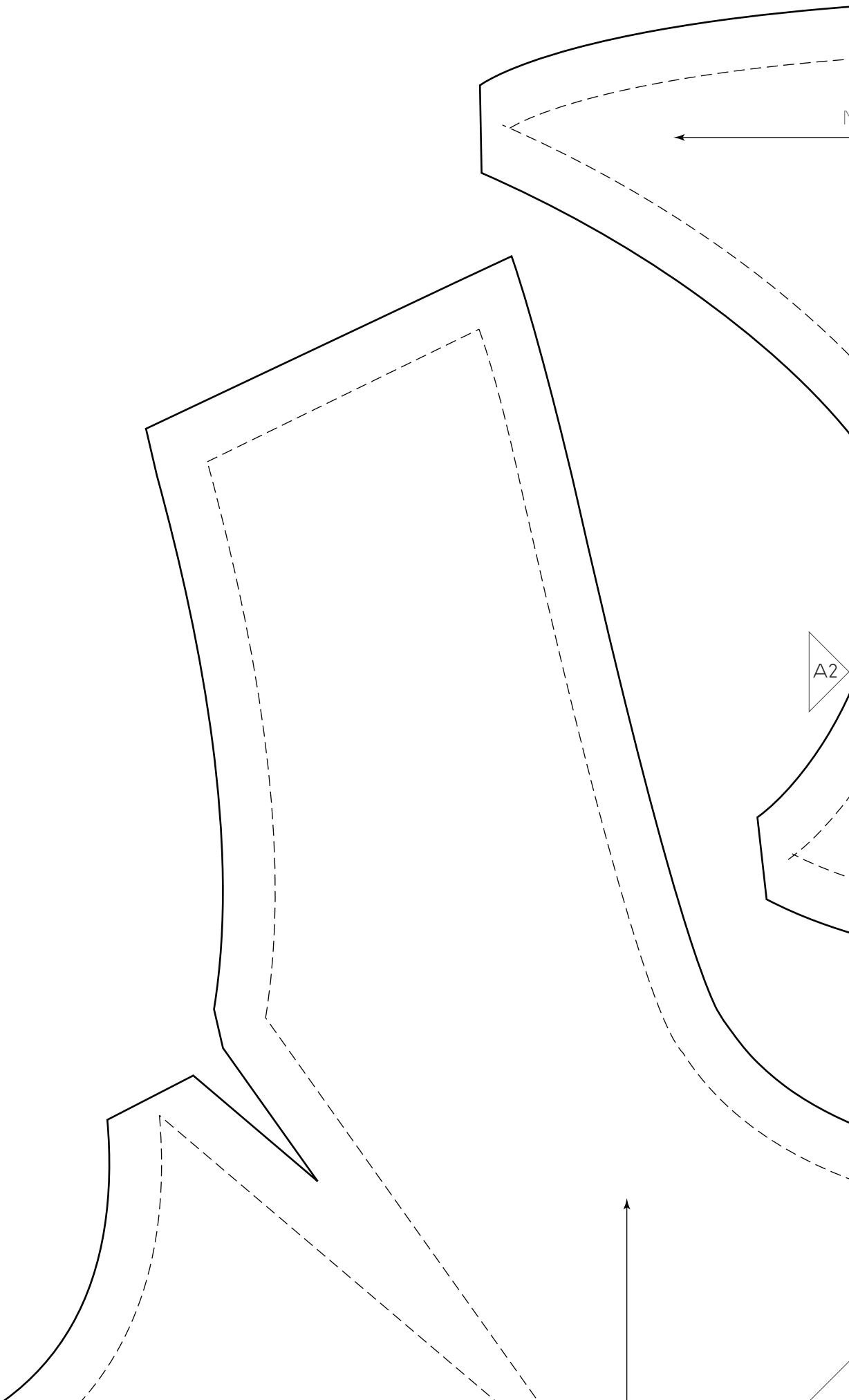
1cm 2 3 4 5

A1

1"

2"

3"



A2

MAXIMUM STRETCH/ GRAIN

# RALPH PINK

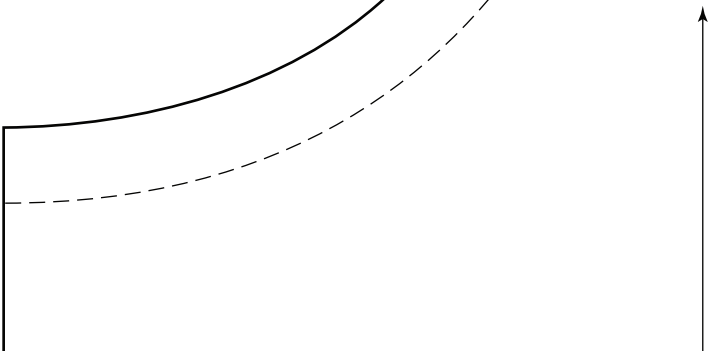
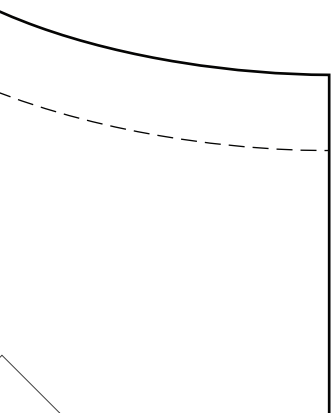
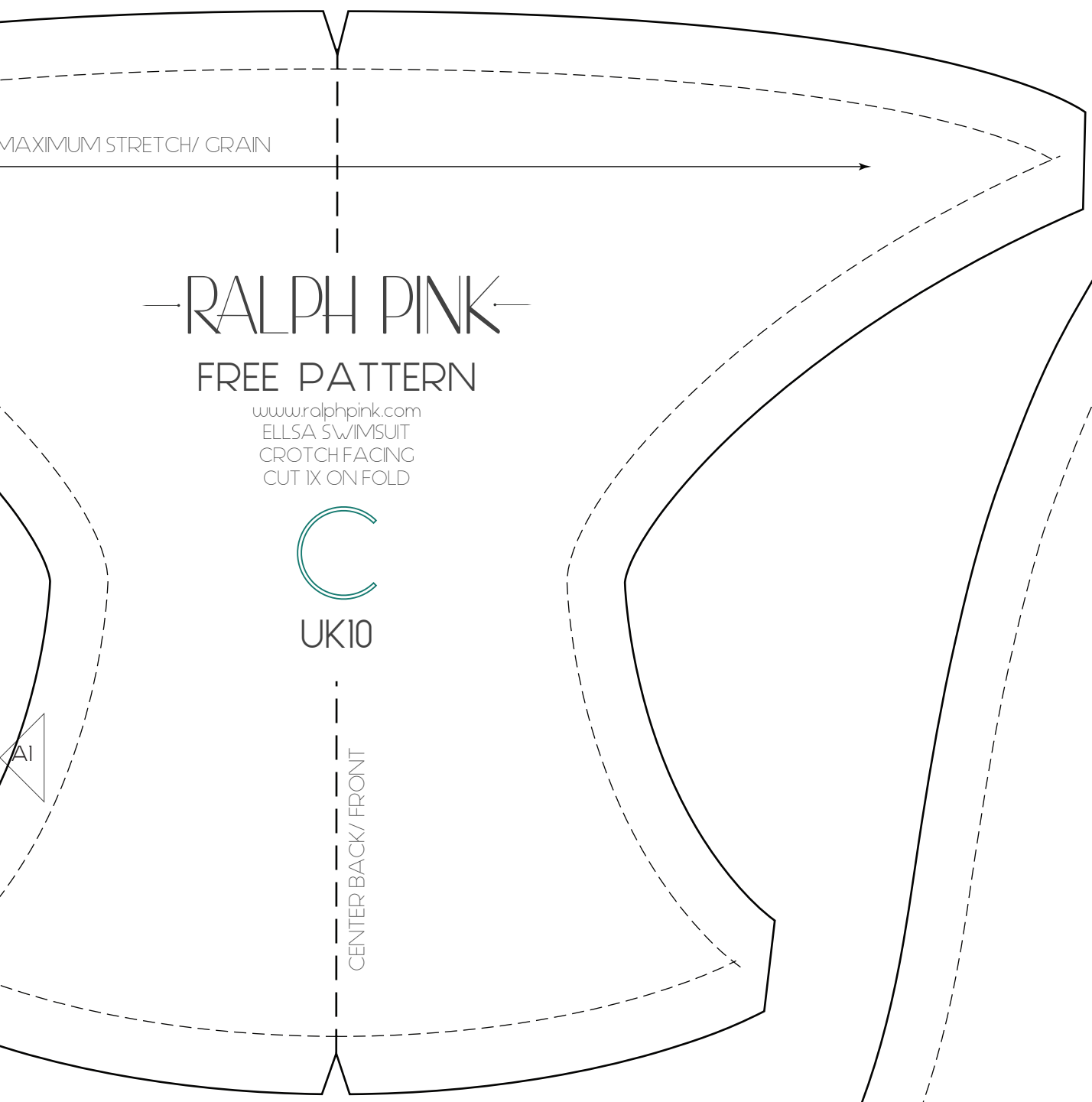
## FREE PATTERN

www.ralphpink.com  
ELLSA SWIMSUIT  
CROTCH FACING  
CUT IX ON FOLD



UK10

CENTER BACK/ FRONT



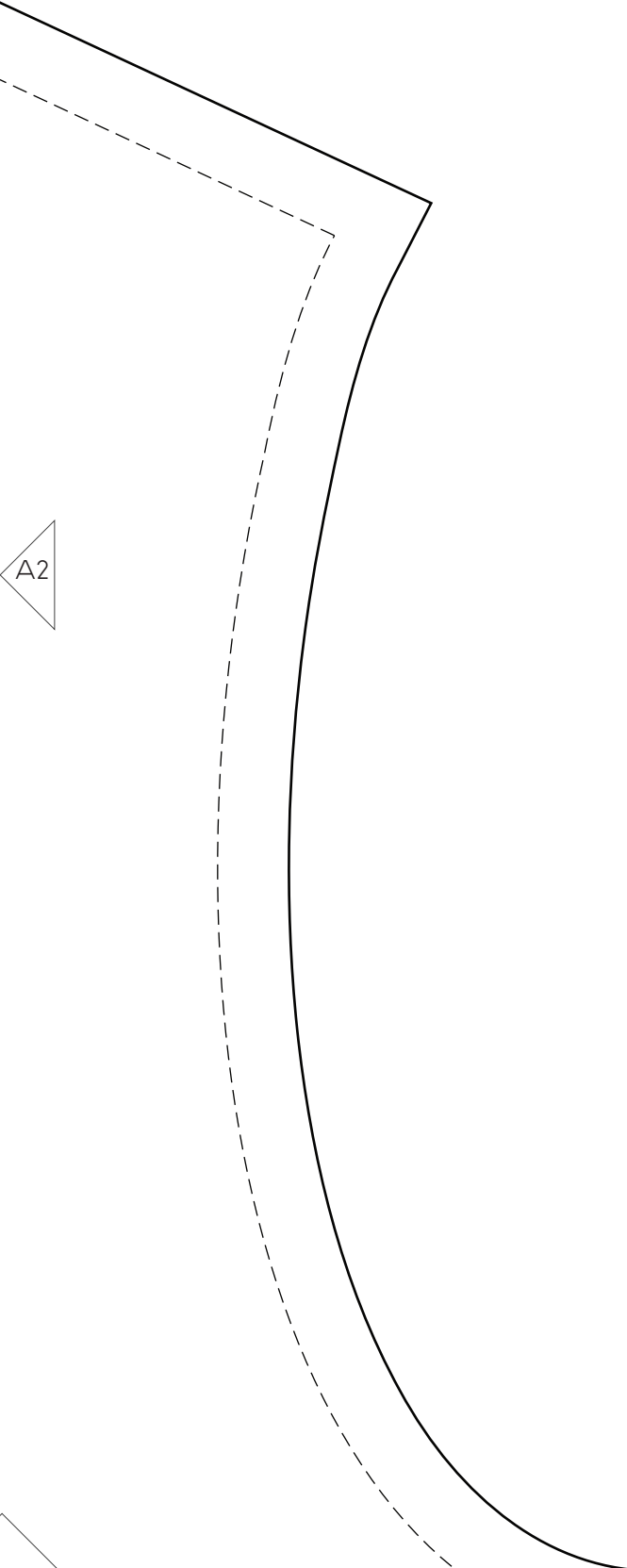
1cm 2 3 4 5

A3

1"

2"

3"



1cm 2 3 4 5

B1

1"

2"

3"

RALPH PINK

FREE PATTERN

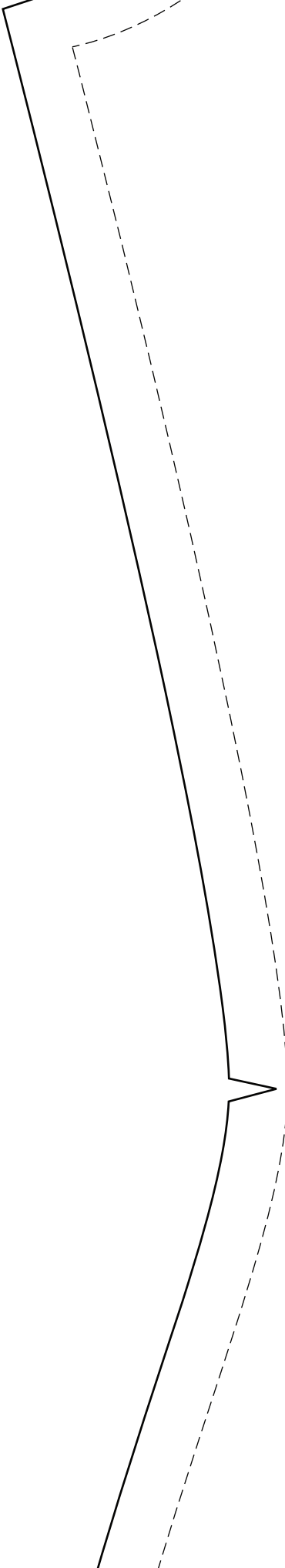
www.ralphpink.com  
ELLSA SWIMSUIT  
FRONT PANEL  
CUT 1X ON FOLD



UK10

For more patterns in a range  
of sizes, with full instructions  
sets - visit [www.ralphpink.com](http://www.ralphpink.com)

B2



1cm 2 3 4 5

B2

1" 2" 3"

RALPH PINK

FREE PATTERN

www.ralphpink.com  
ELLSA SWIMSUIT  
BACK PANEL  
CUT IX ON FOLD

B

UK10

For more patterns in a range  
of sizes, with full instructions  
sets - visit [www.ralphpink.com](http://www.ralphpink.com)

BI

B3

CENTER FRONT / FOLD LINE

CENTER BACK / FOLD LINE

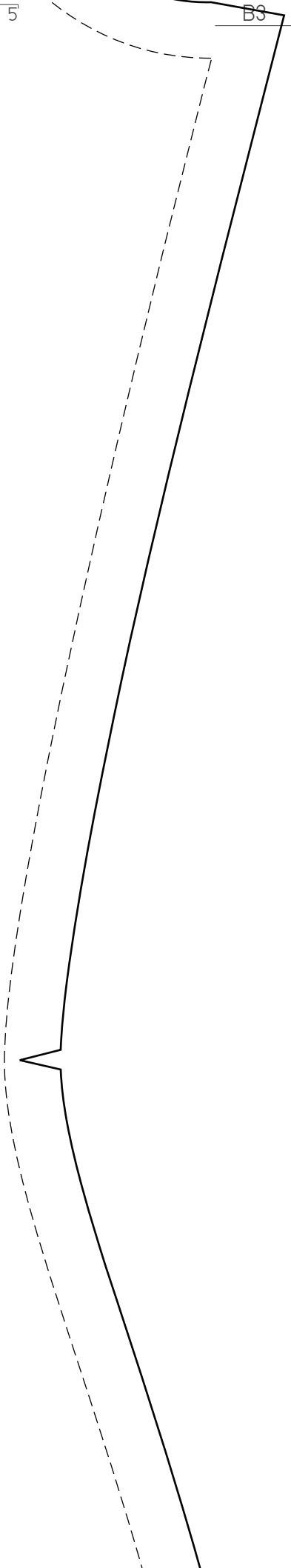
1cm 2 3 4 5

B3

1"

2"

3"



1cm

2

3

4

5

C1

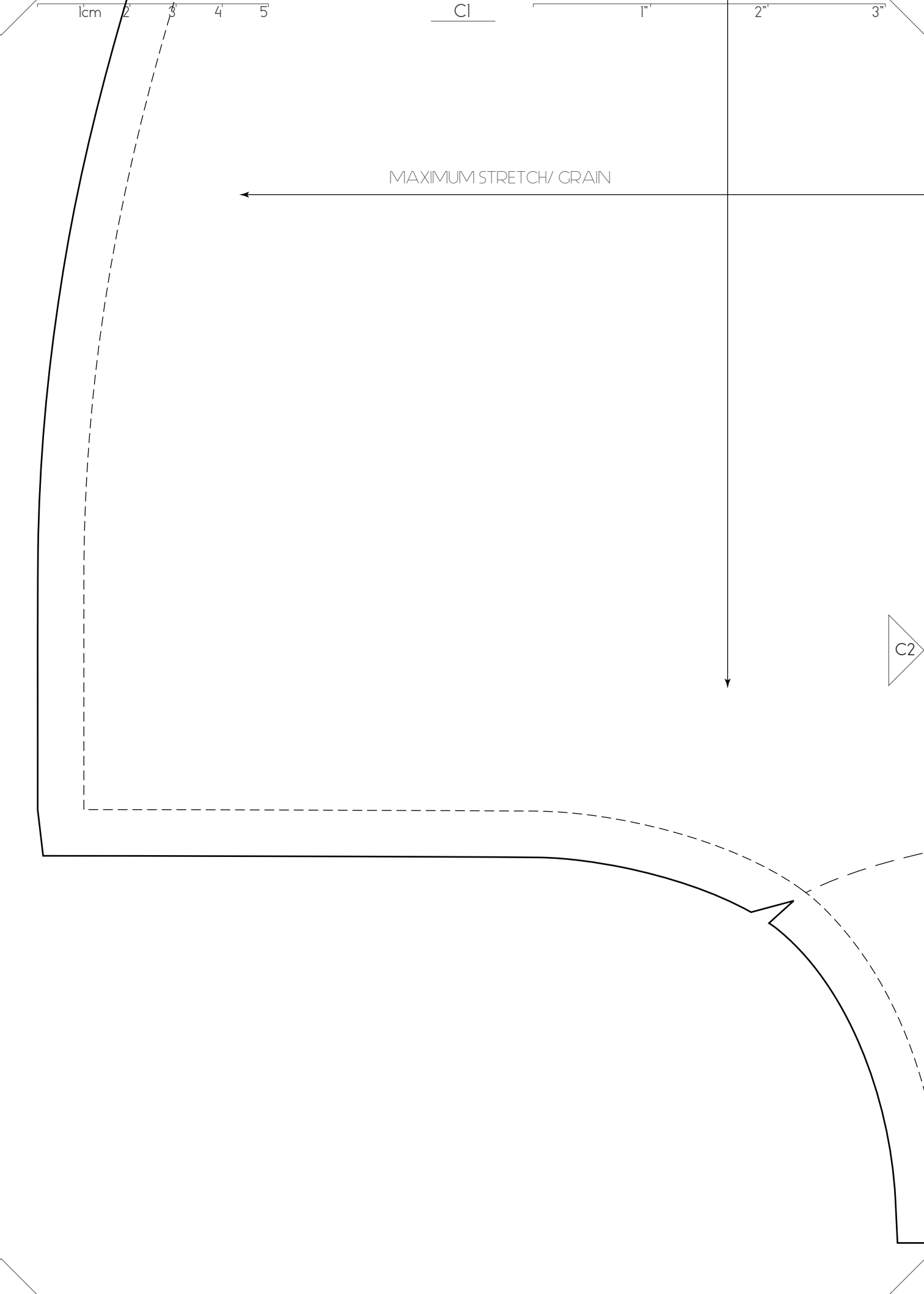
1"

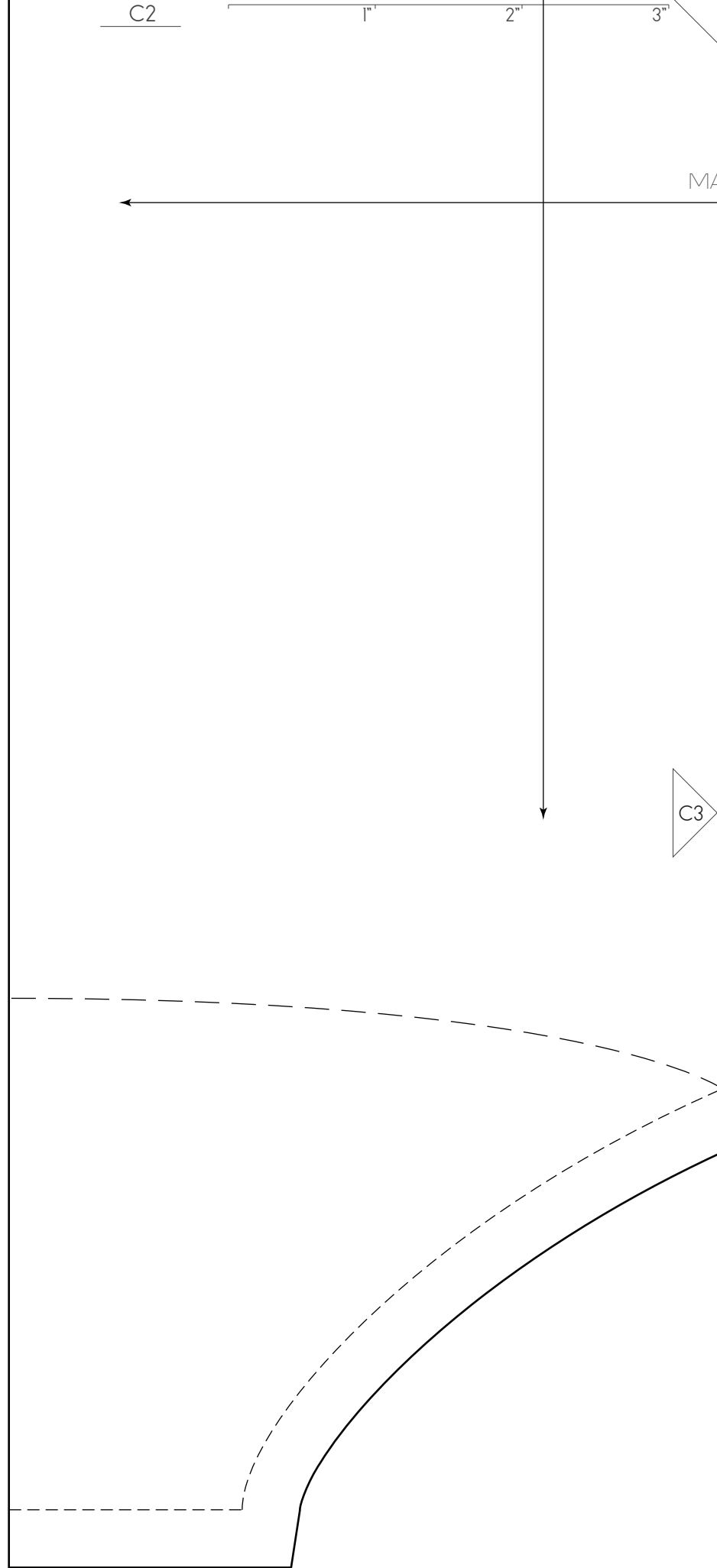
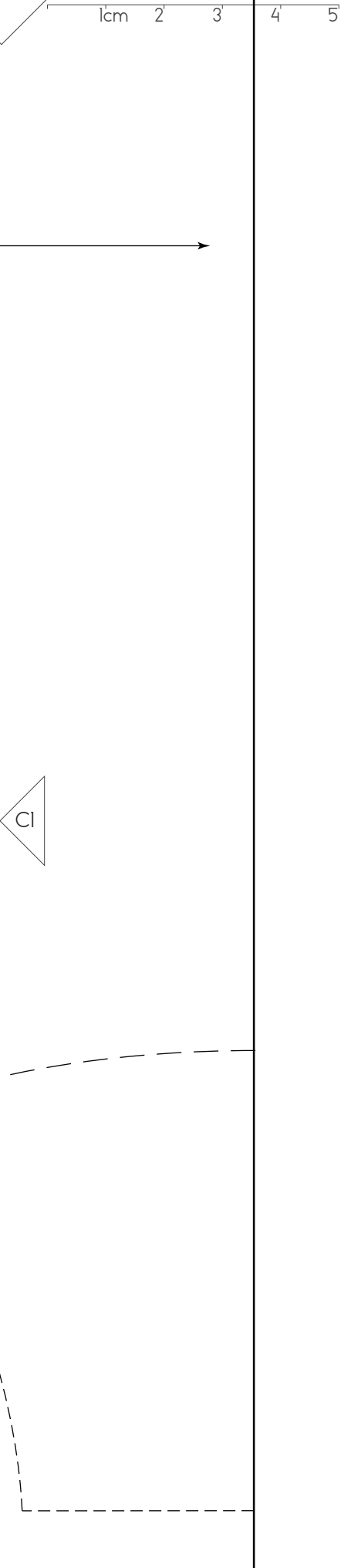
2"

3"

MAXIMUM STRETCH/ GRAIN

C2







1cm 2 3 4 5

C3

1"

2"

3"

MAXIMUM STRETCH/ GRAIN

