

Bitte überall, außer am Halsausschnitt,
Nahtzugabe hinzufügen



© Mause-Mama 2015

Größen und ihre Farben:

116

122

128

134

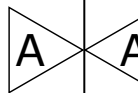
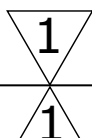
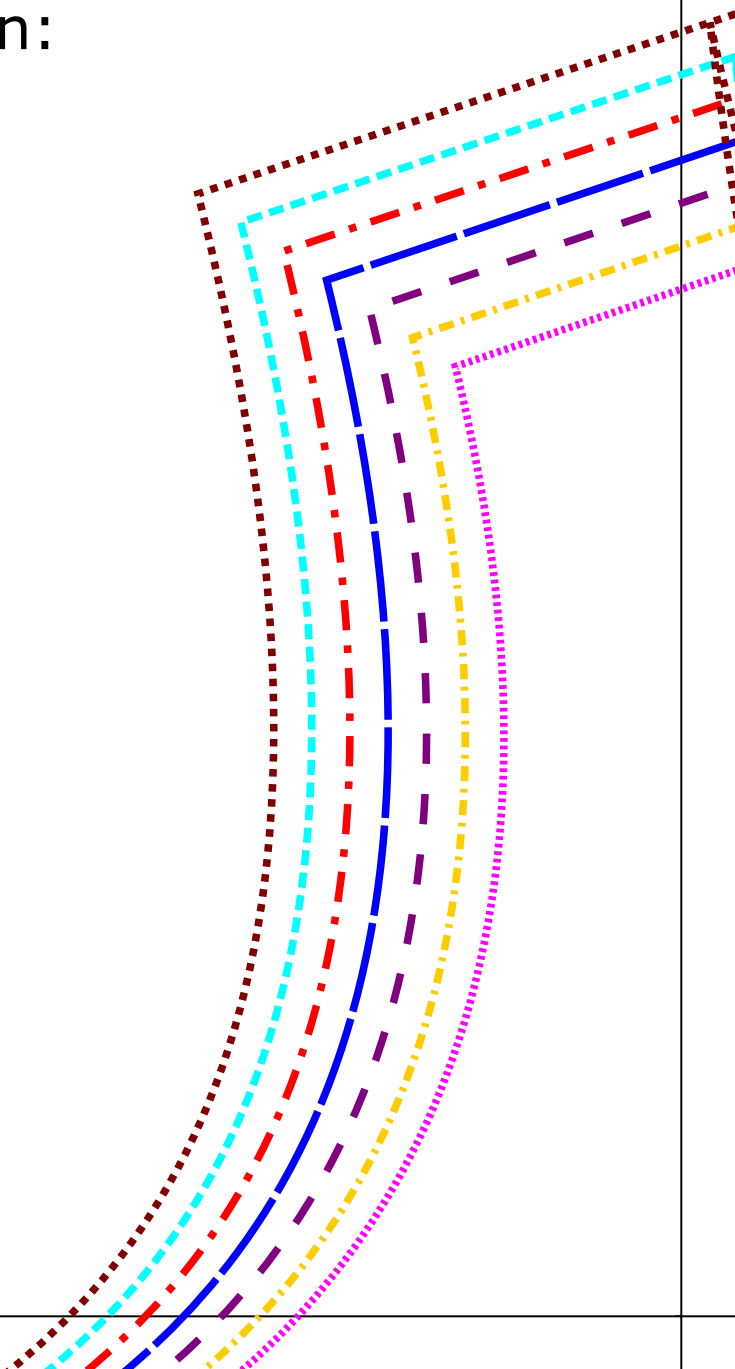
140

146

152

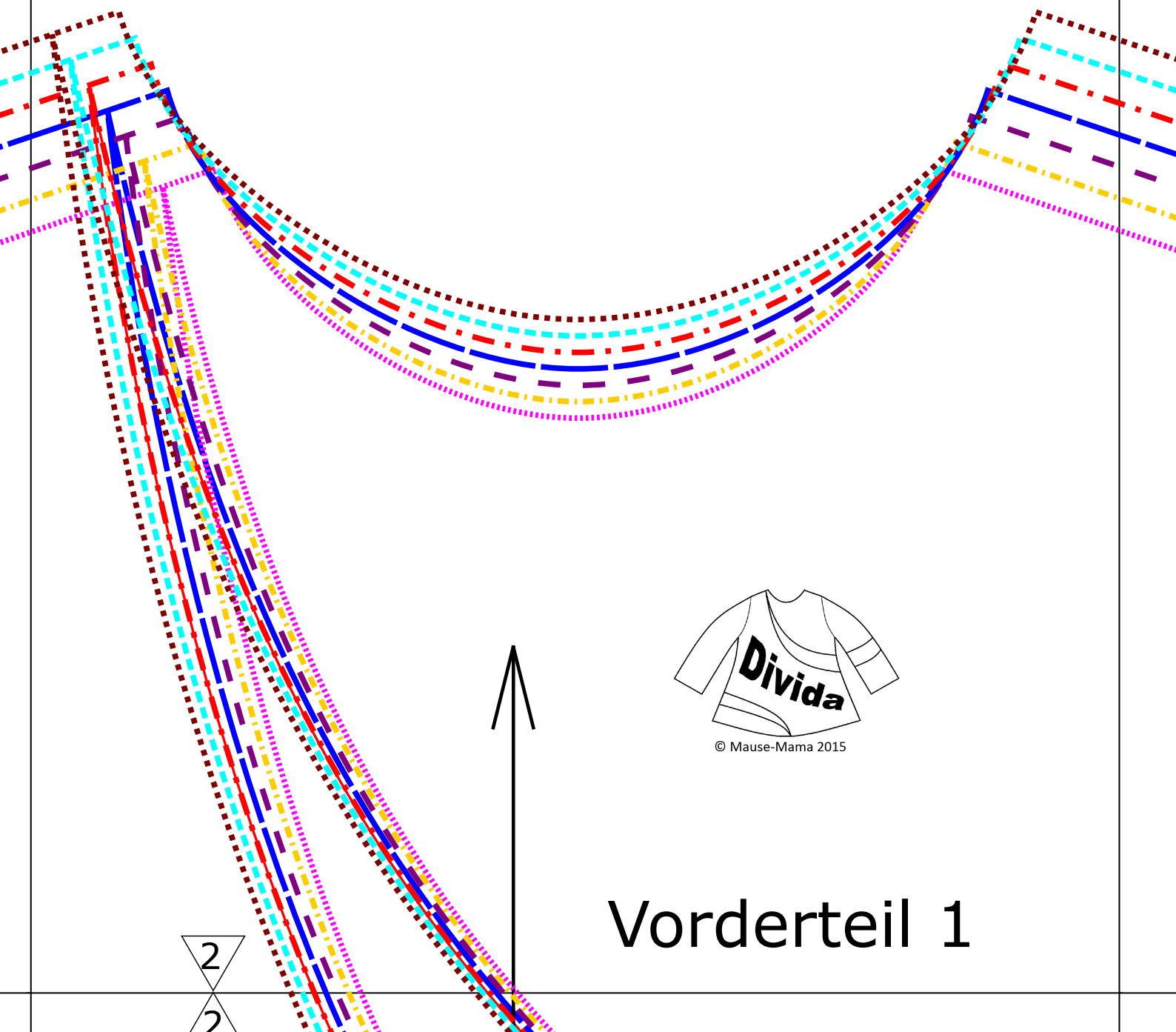
3 cm
x
3 cm

↑
F
a
d
e
n
l
a
u
f



A

B B



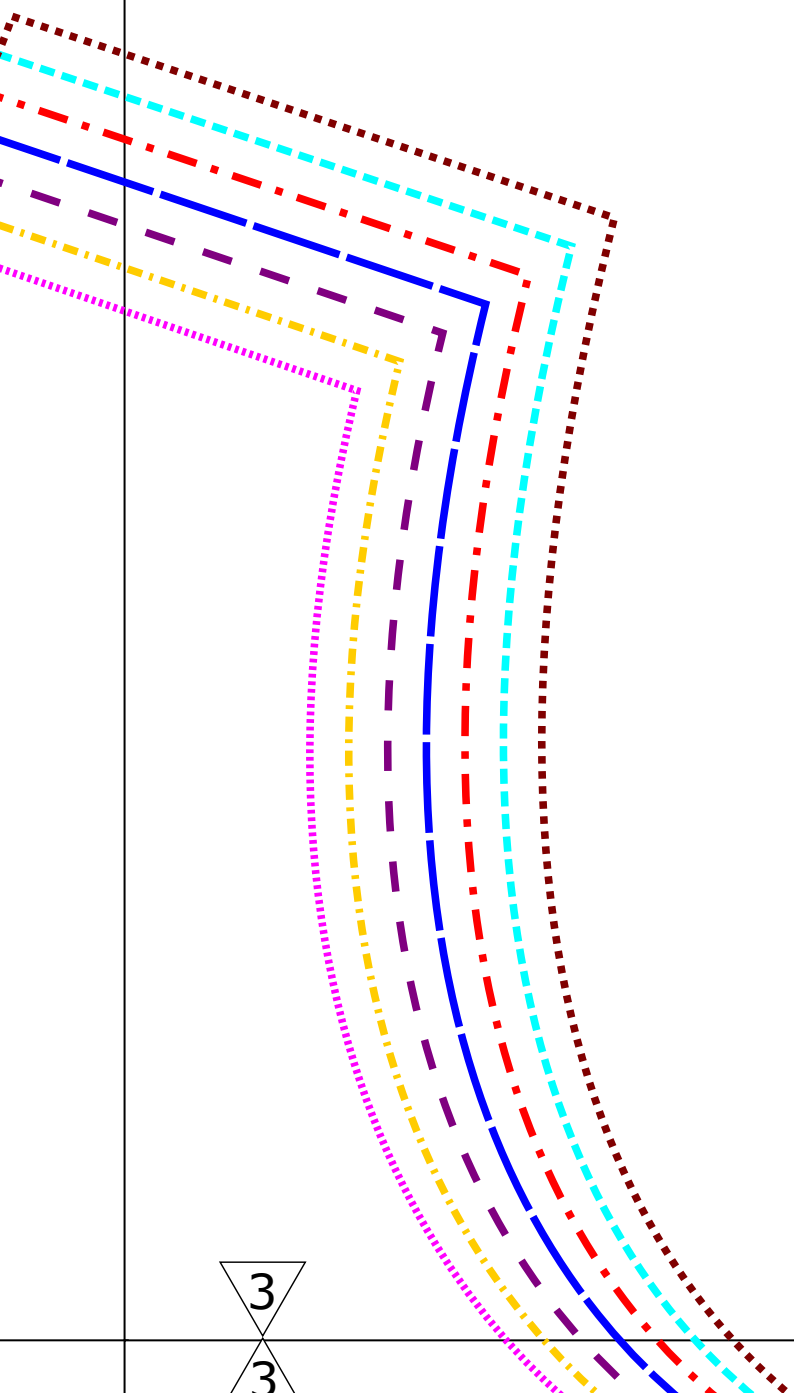
© Mause-Mama 2015

Vorderteil 1

2

2

B B

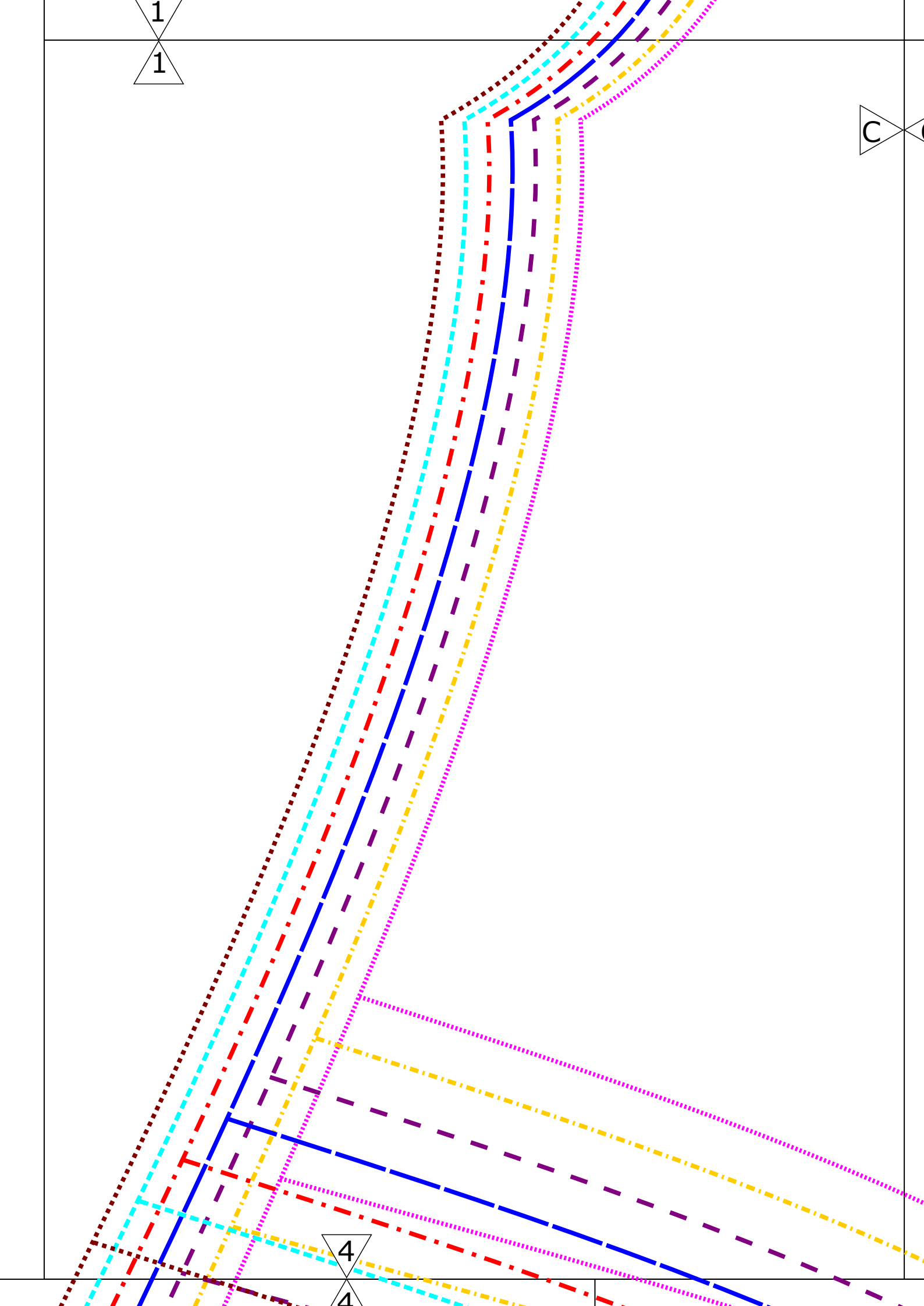


3
3

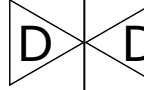
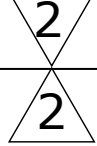
1
1

C

4
4



Vorderteil 1



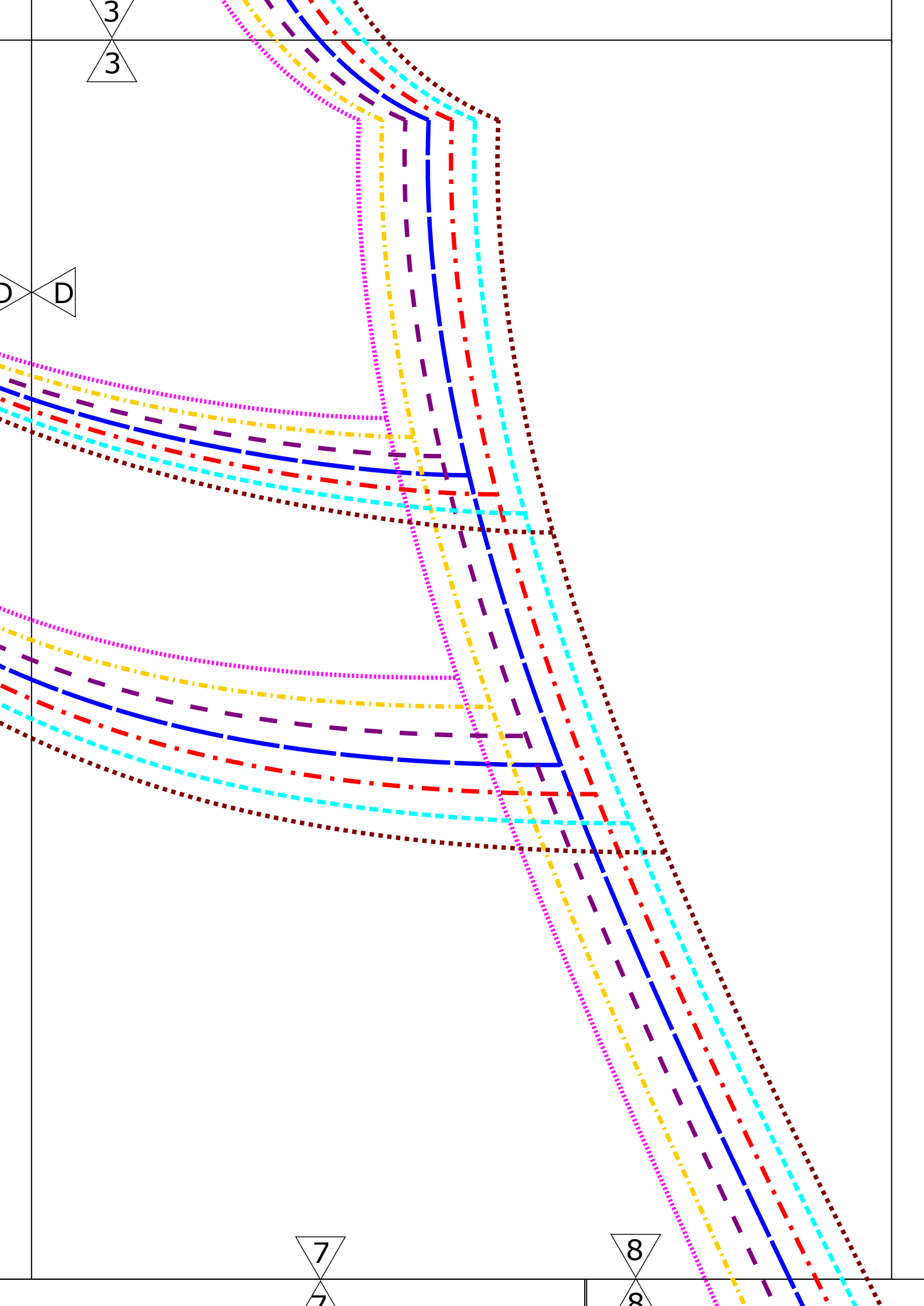
Vorderteil 3

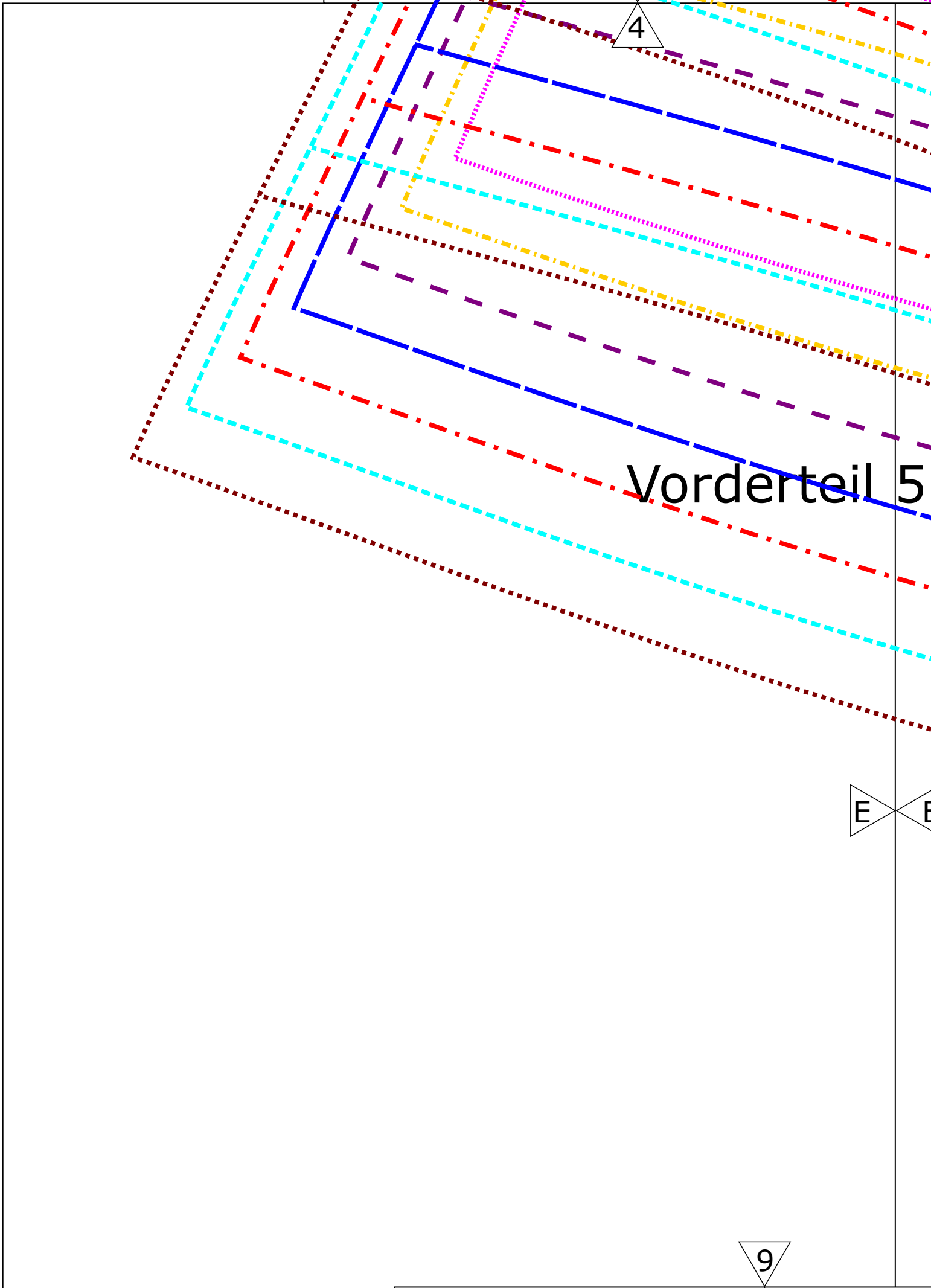
Vorderteil 2

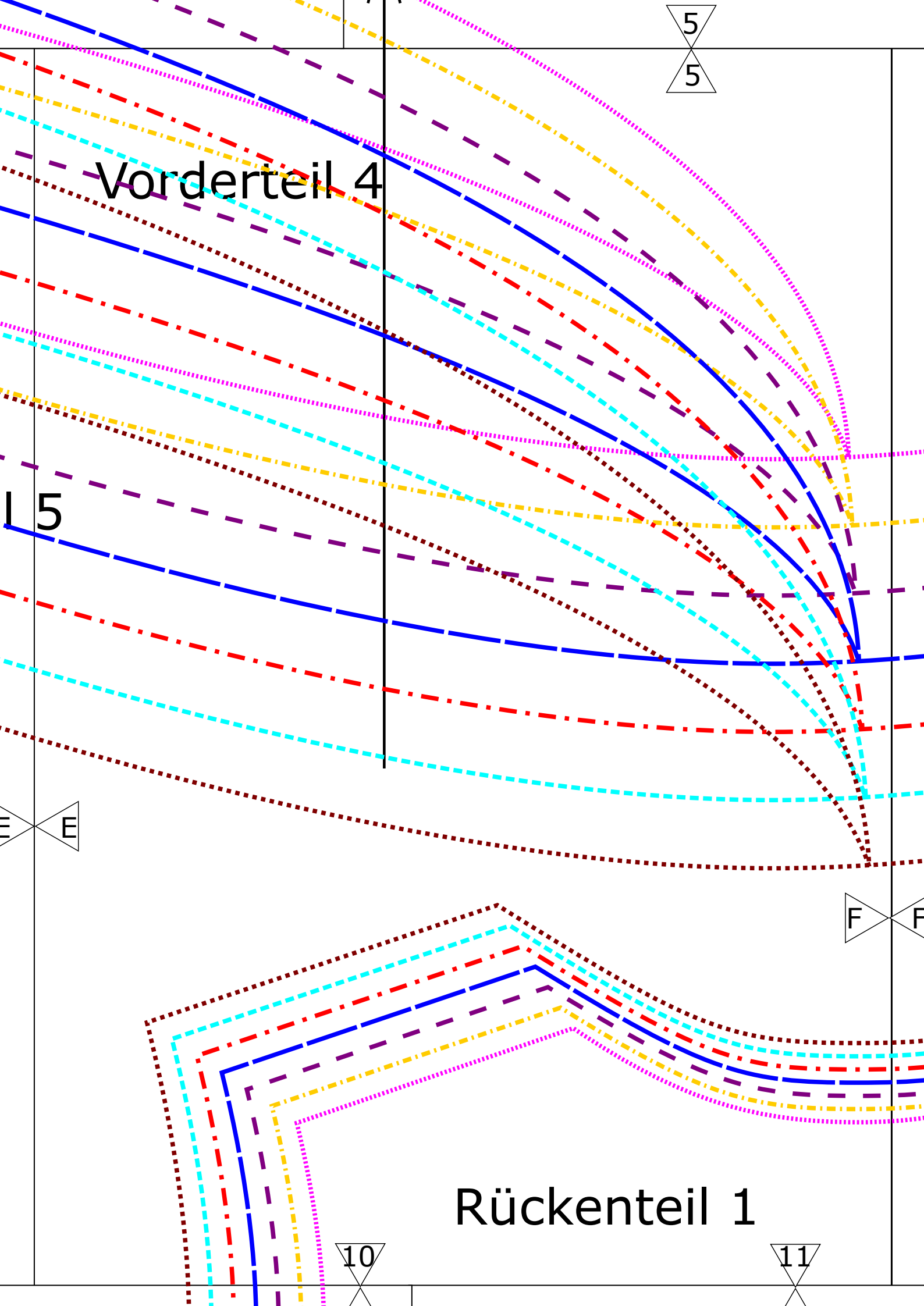


© Mause-Mama 2015



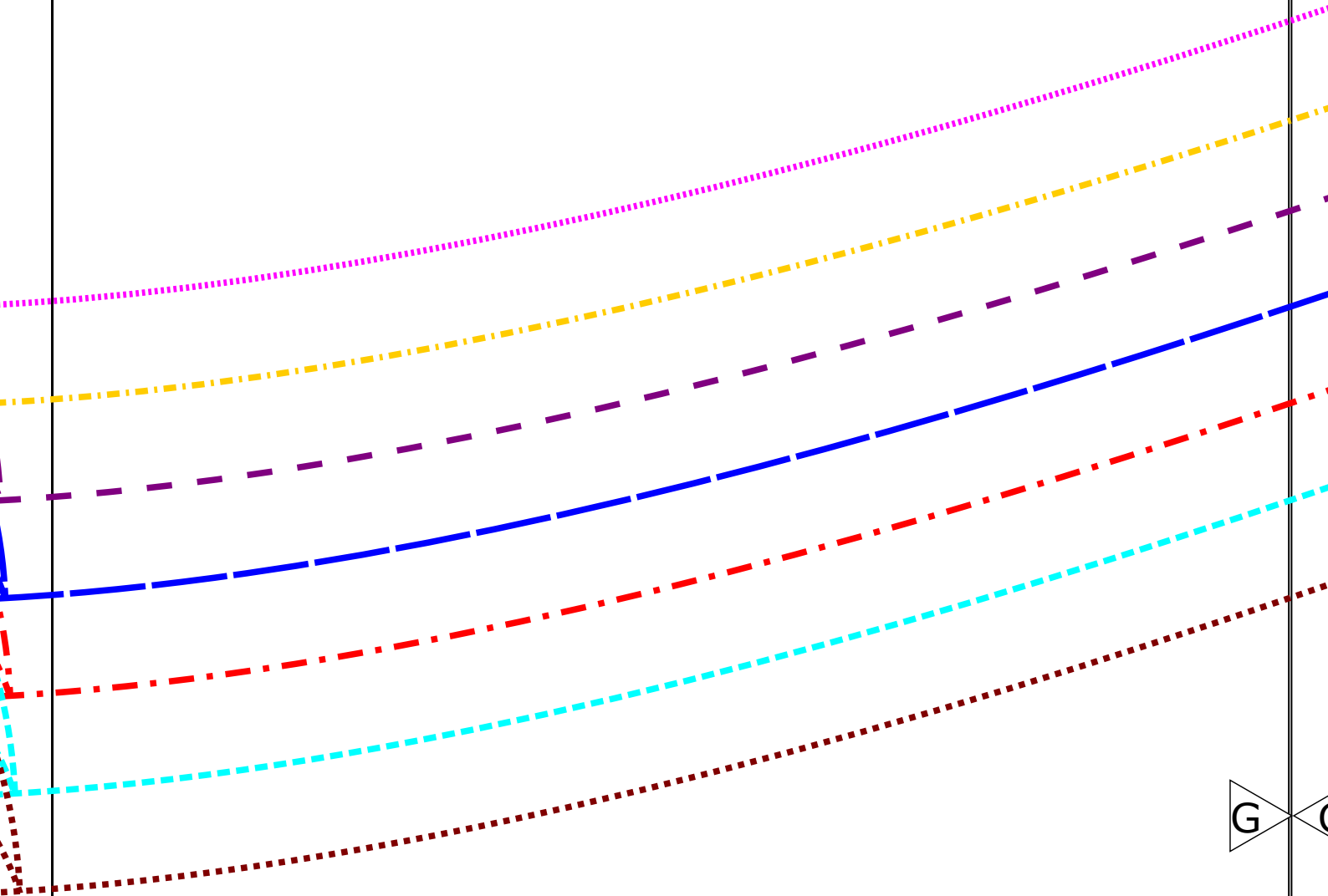






6
6

7
7

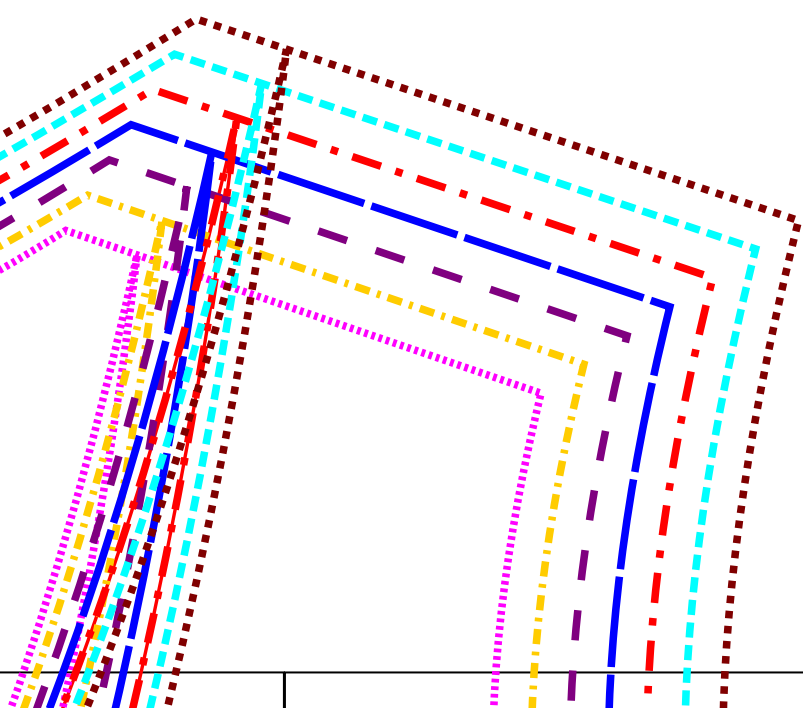


F F

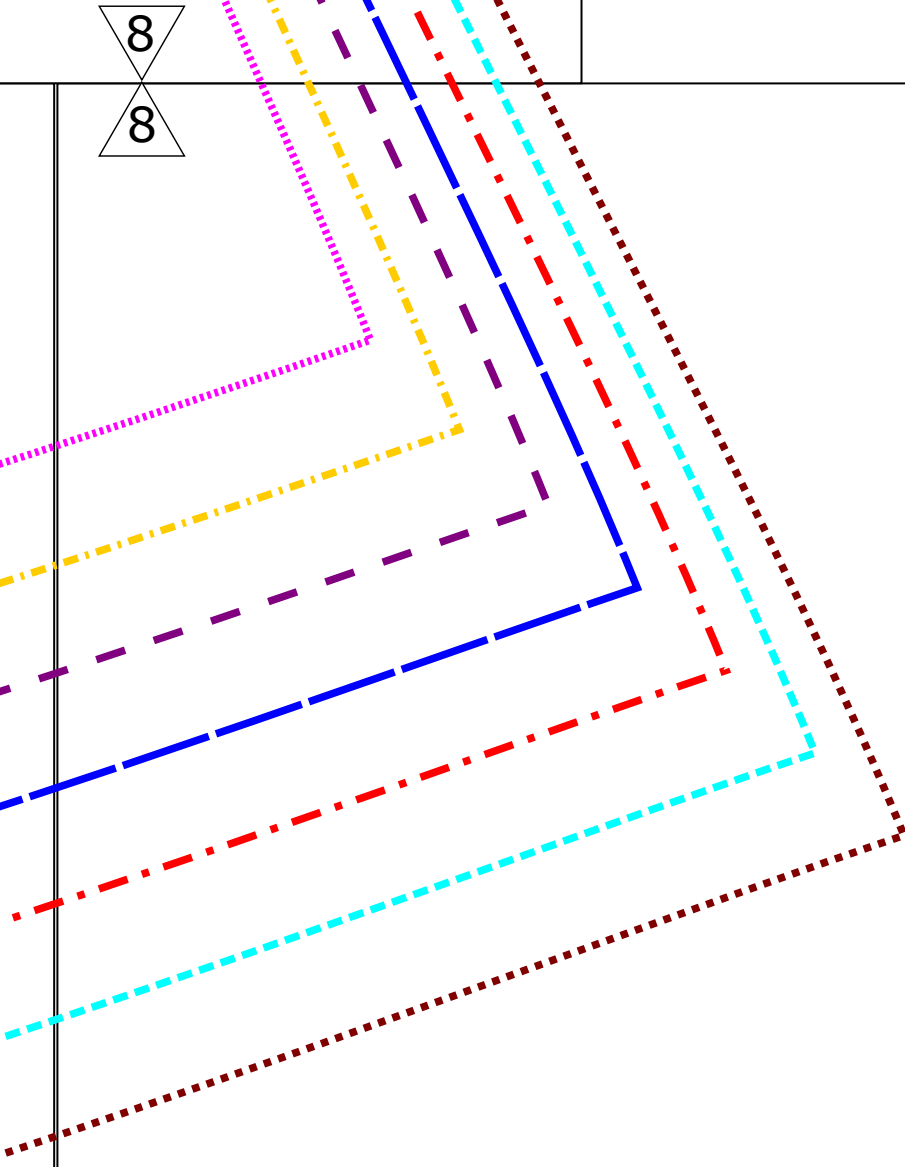
G G

12

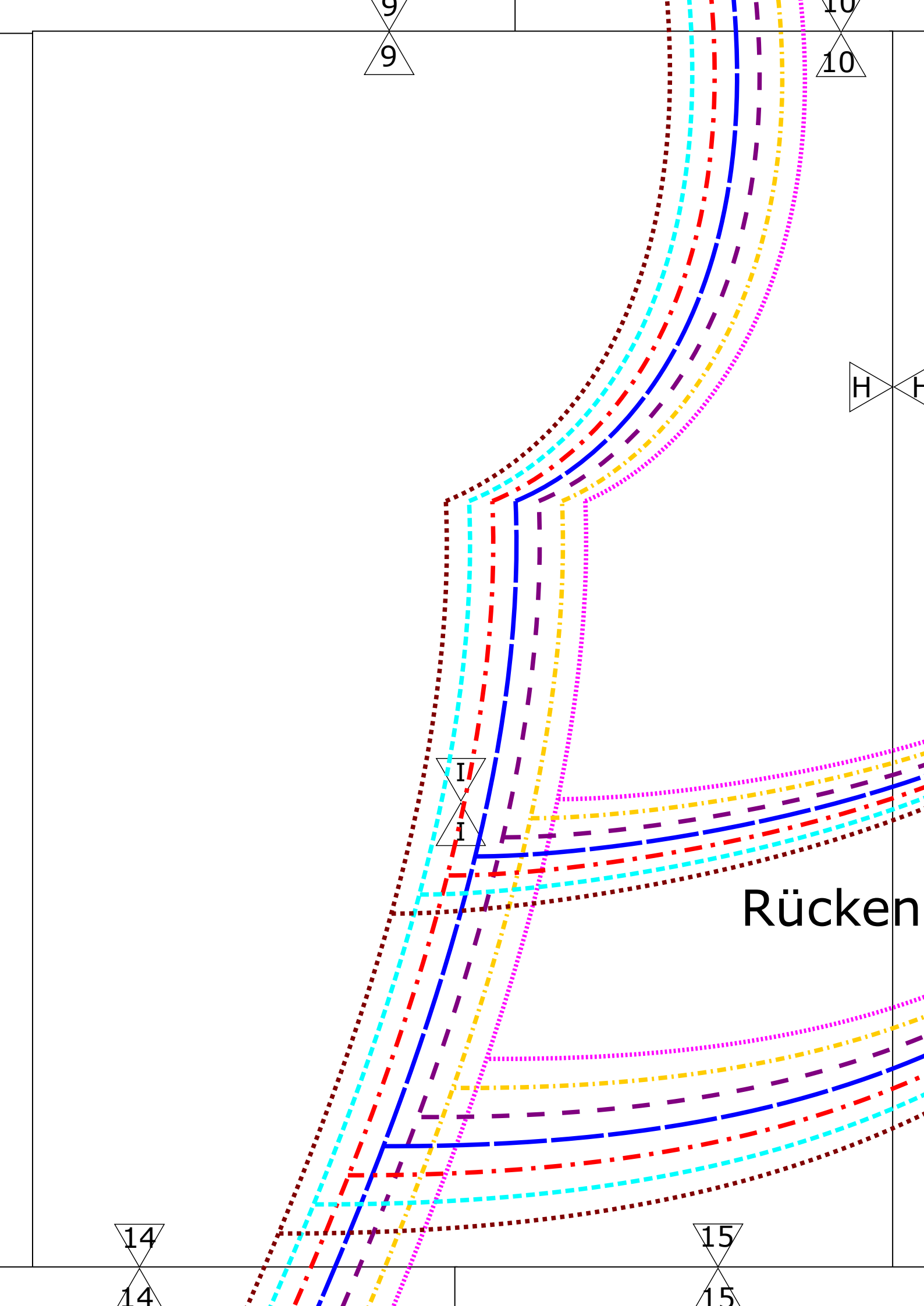
13



8
8



G G

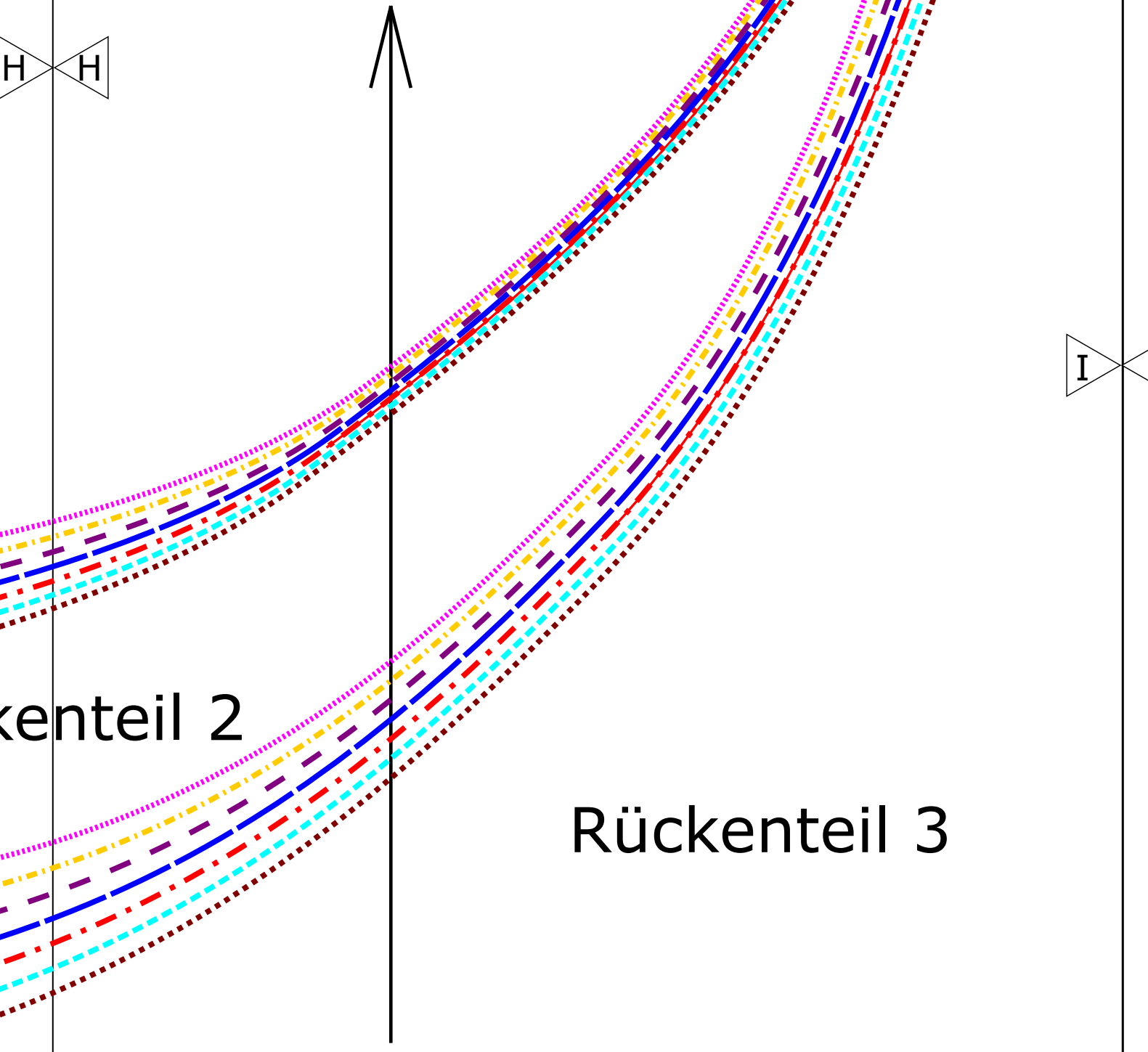


11

12



H H



Rückenteil 2

Rückenteil 3

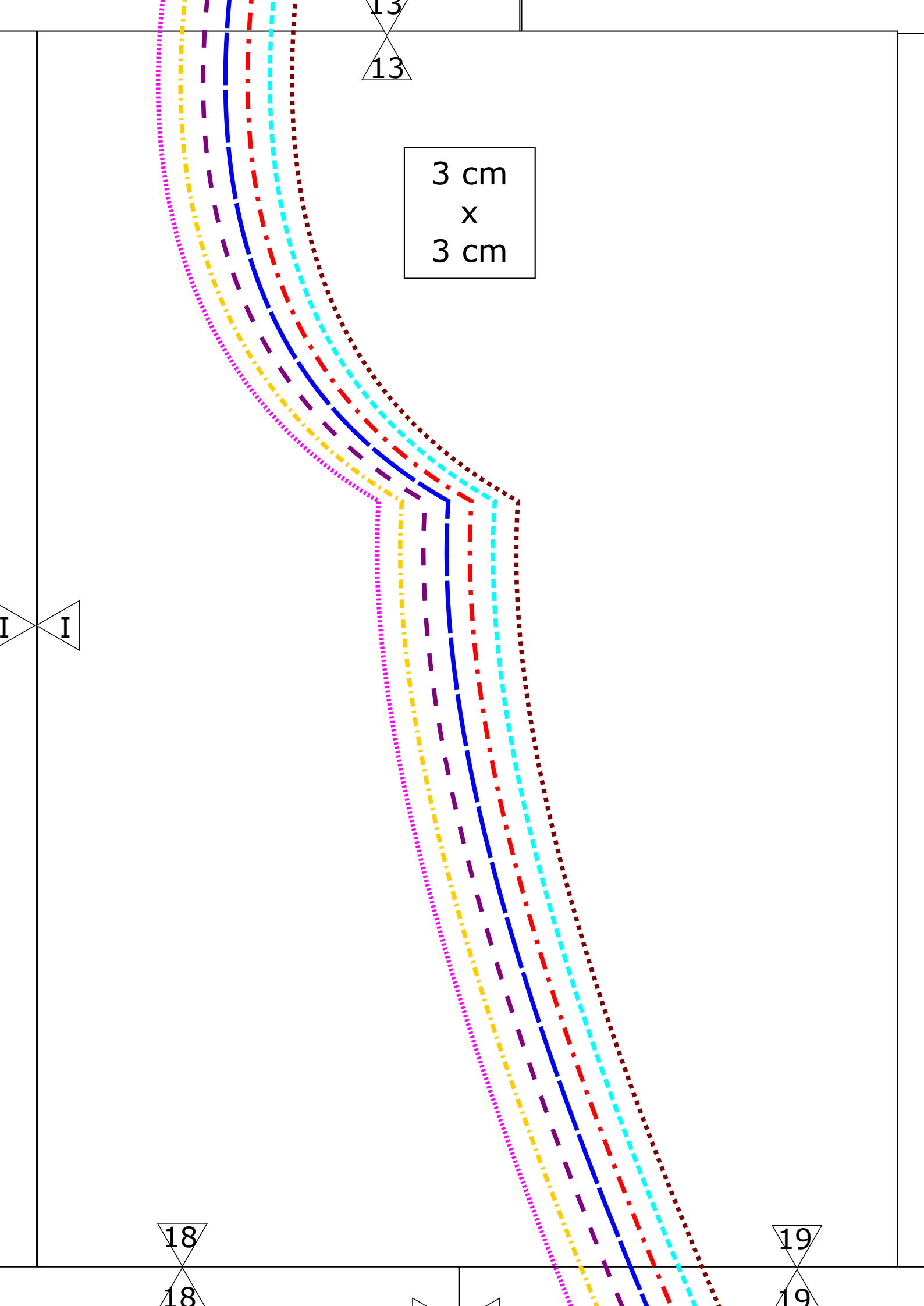
I

16

17

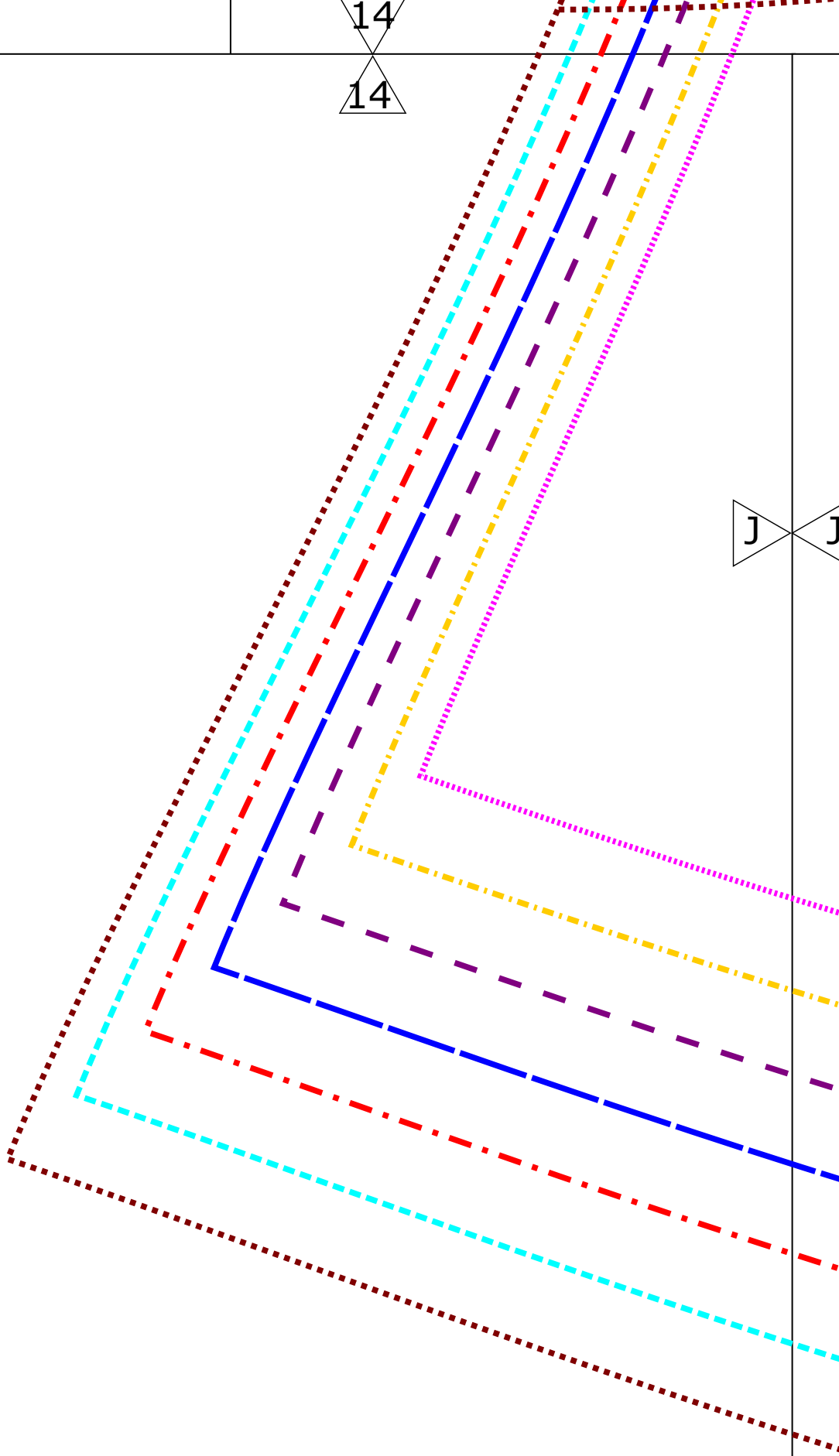
16

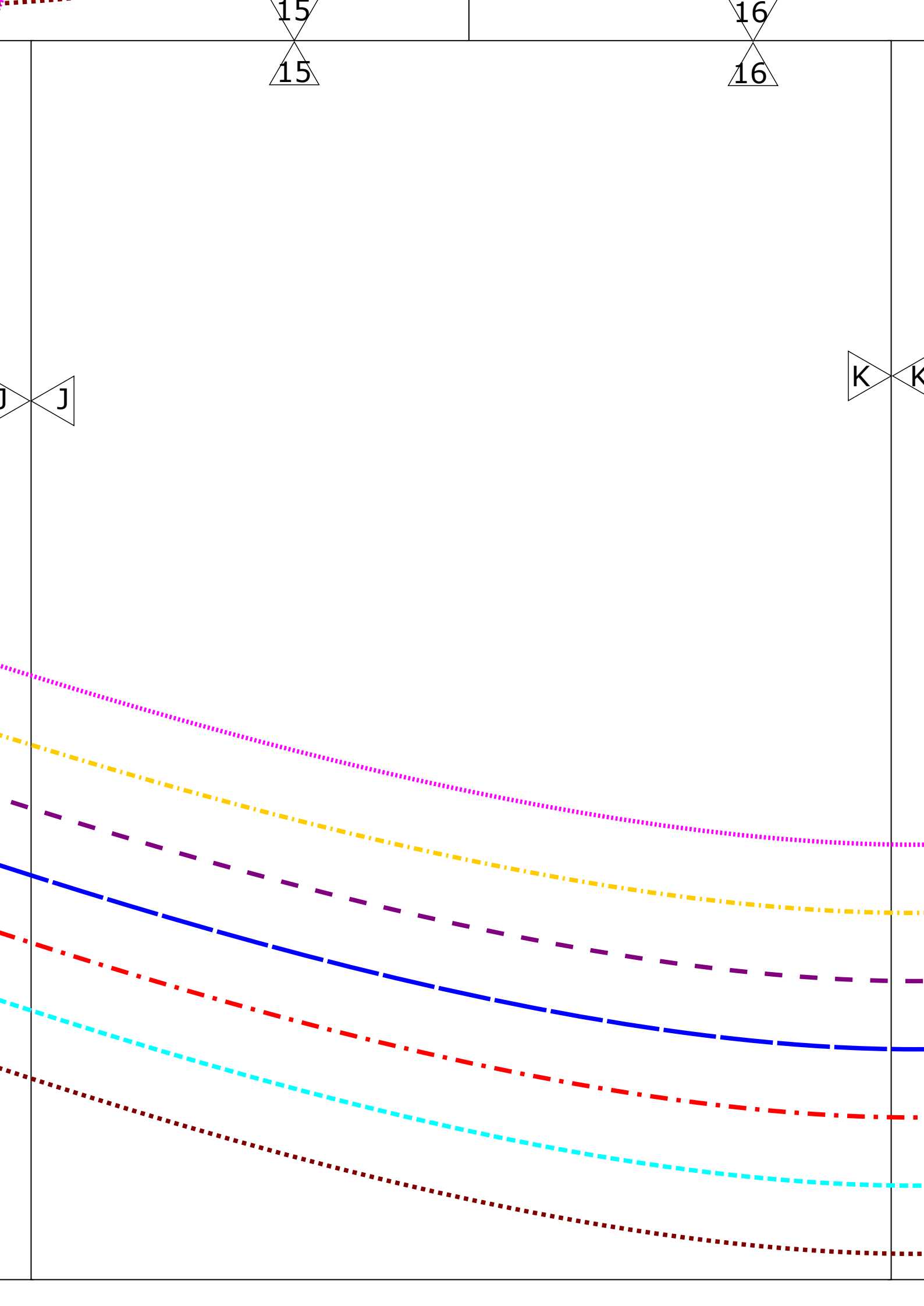
17



14
14

J J





17
17

18
18

L

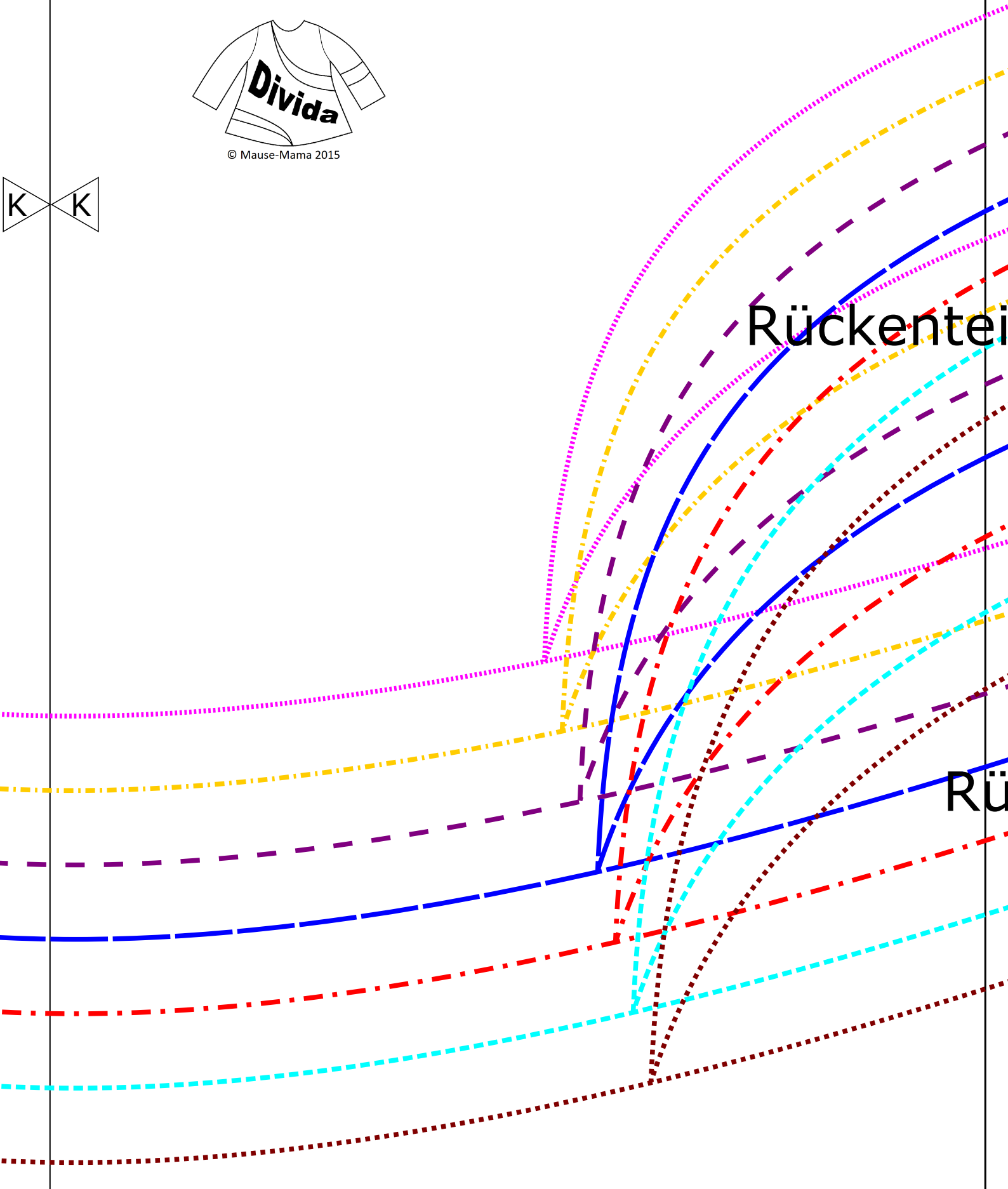


© Mause-Mama 2015

K K

Rückenteil

Rü



M M

3 cm
x
3 cm

Ärmel 1

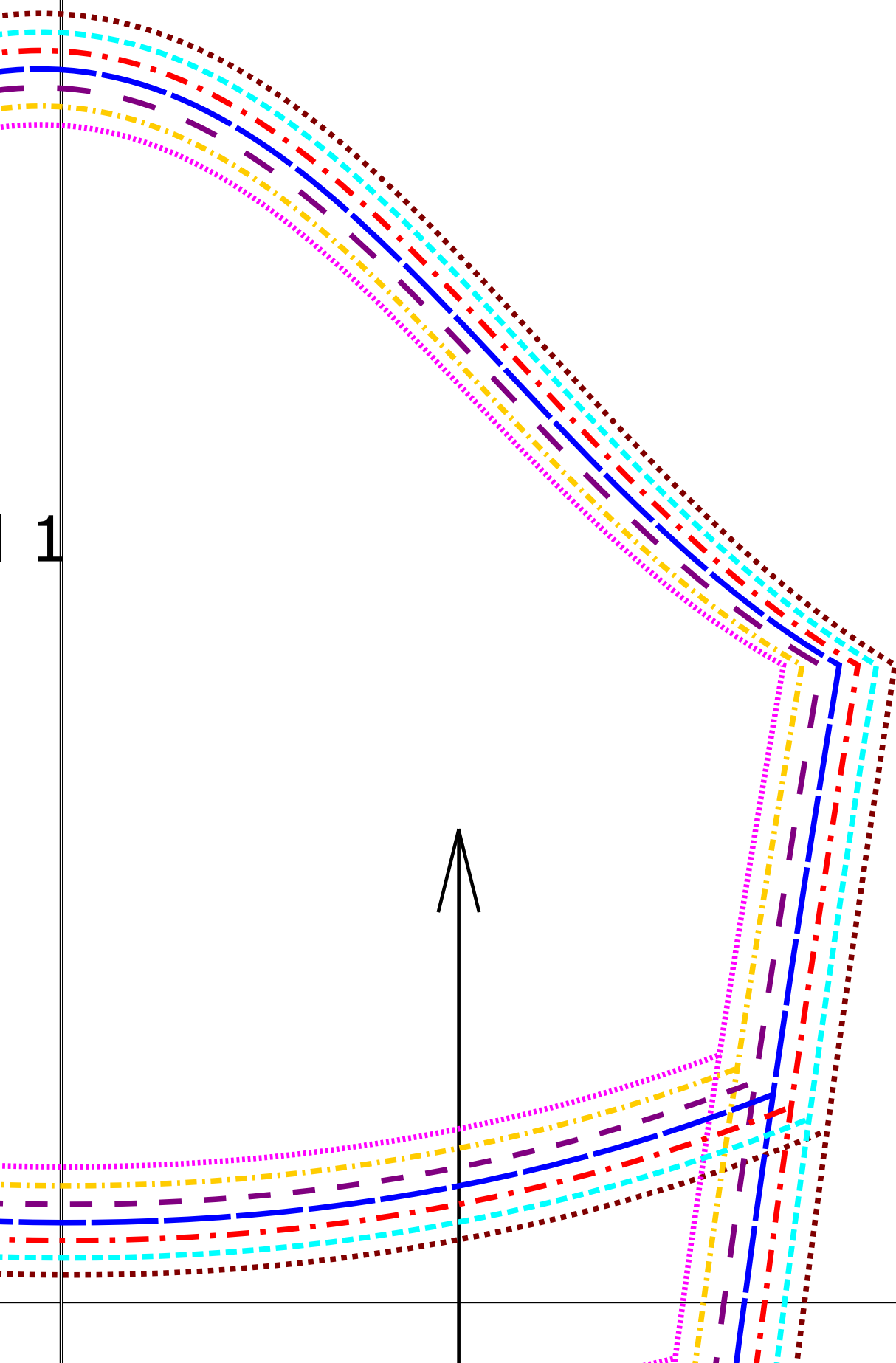


© Mause-Mama 2015

20
20

Ärmel 2

M M



21

21

20

20

Ärmel 2

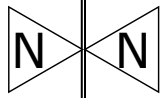
Ärmel 3

N





© Mause-Mama 2015



3

A large grid with a vertical line on the left and a horizontal line at the top. The grid is filled with various colored lines: a solid blue line, a dashed purple line, a dotted pink line, a dash-dot yellow line, a dashed red line, a dashed cyan line, and a dotted brown line. These lines form a complex path that starts on the left and ends on the right, with several turns and curves. The lines are arranged in a way that suggests a tracing or cutting exercise.