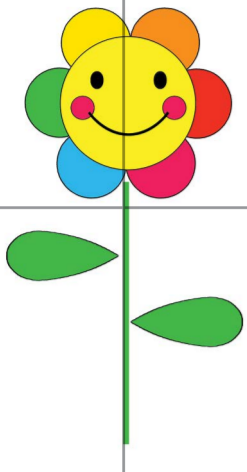
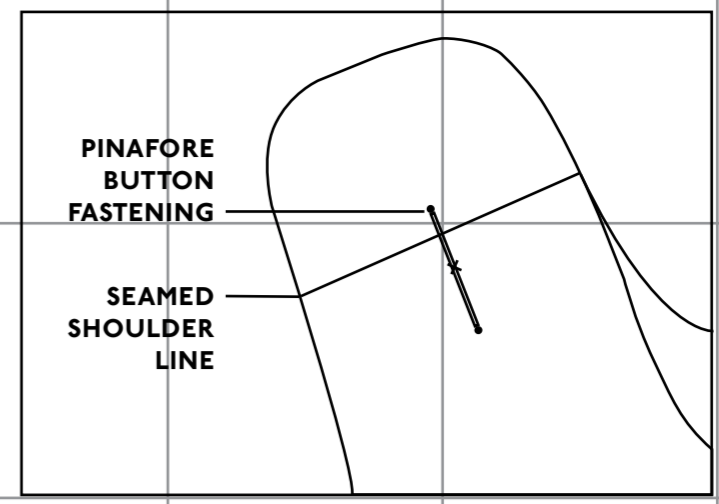


# CONTRARY MARY PINAFORE

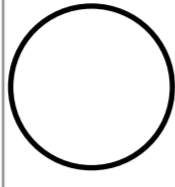
## FINISHED MEASUREMENTS

SIZE	LENGTH FROM SNP*	CHEST	HEM CIRCUMFERENCE
6-18 months	44cm (17½in)	55cm (22in)	80cm (31½in)
18 months-3 years	49cm (19½in)	60cm (24in)	90cm (35½in)
3-5 years	55cm (22in)	66cm (26½in)	100cm (39½in)
5-7 years	62cm (24½in)	71cm (28½in)	110cm (43in)

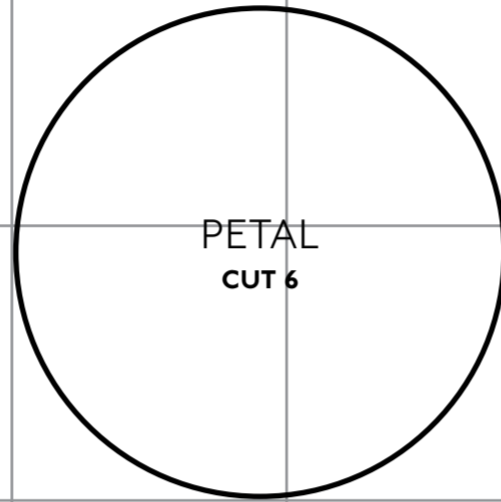
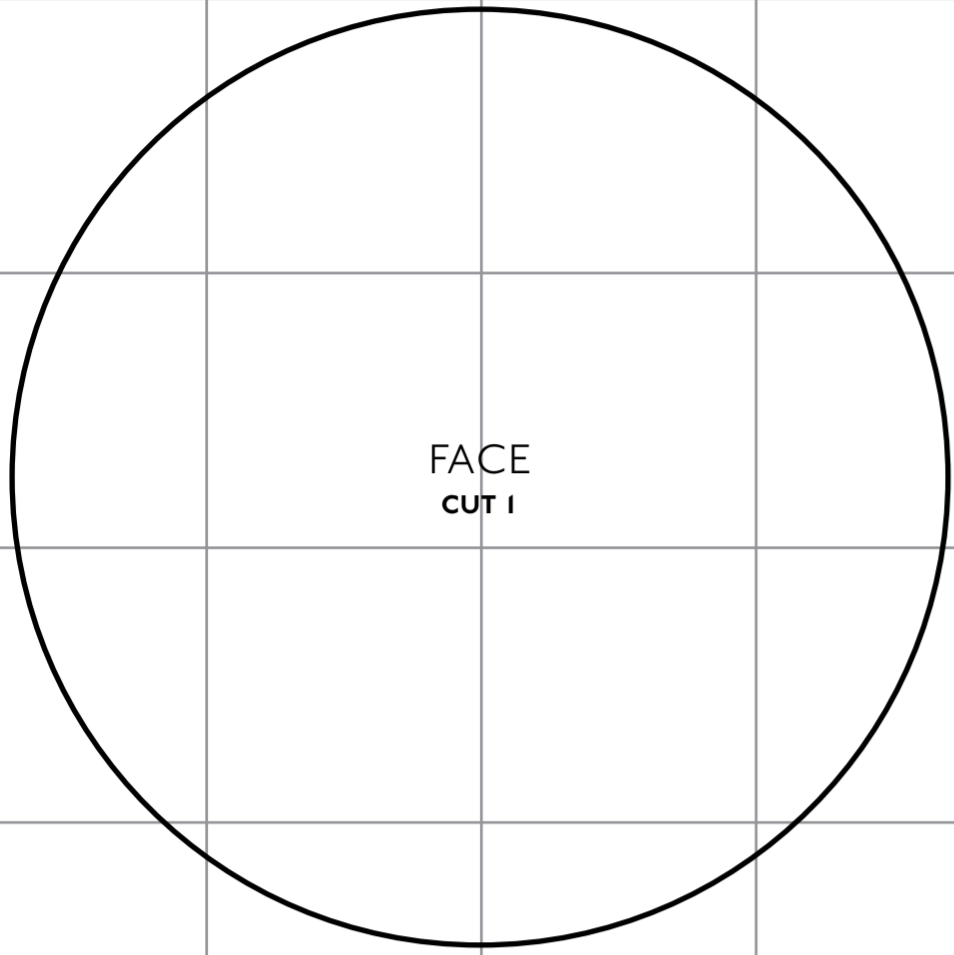
\*SNP - side neck point (measured from point on garment closest to neck)



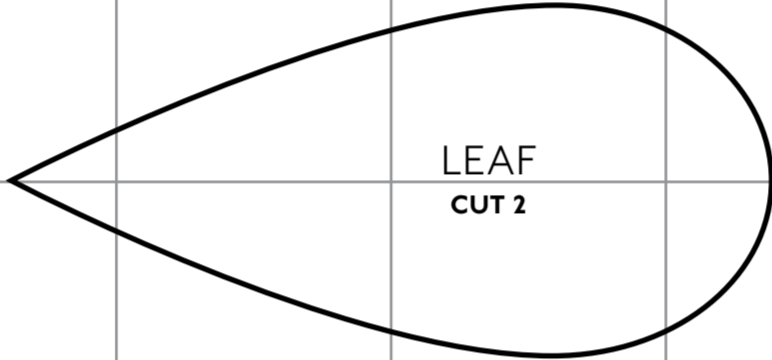
CHEEK CUT 2



SMILE CUT 1



STEM CUT 1

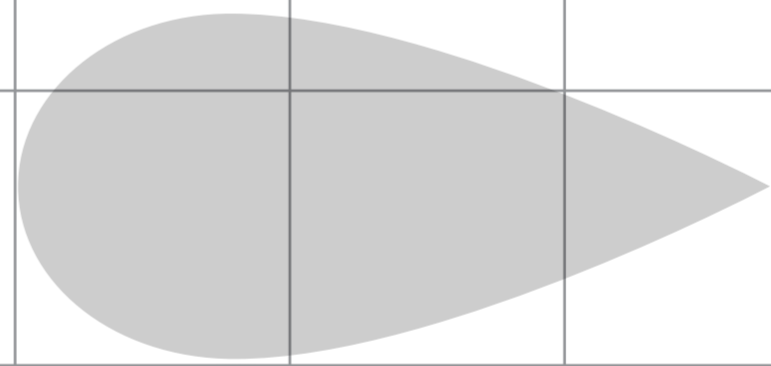
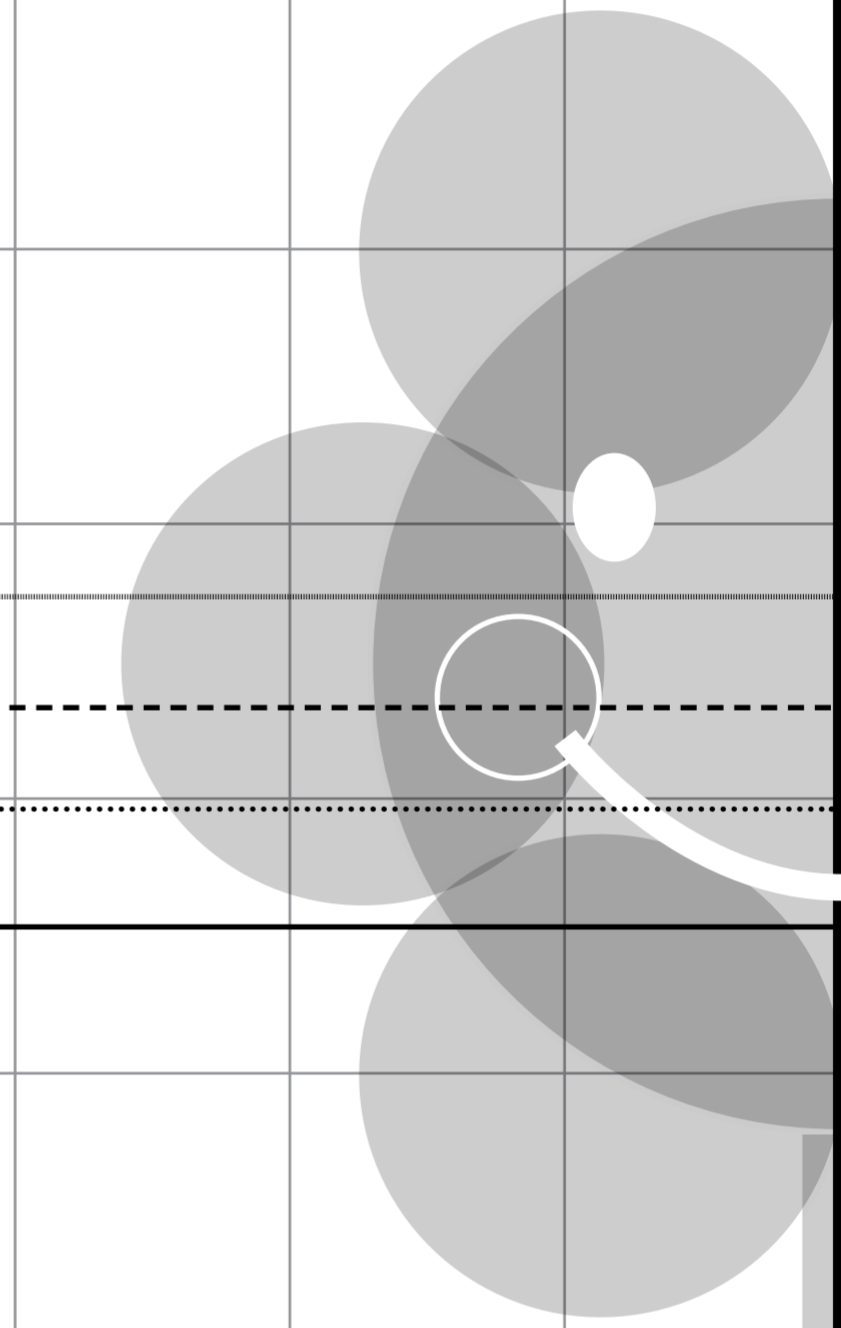


FACING

PINAFORE FASTENING

SHOULDER LINE

CENTRE FRONT/BACK CUT TO FOLD



# CONTRARY MARY PINAFORE

