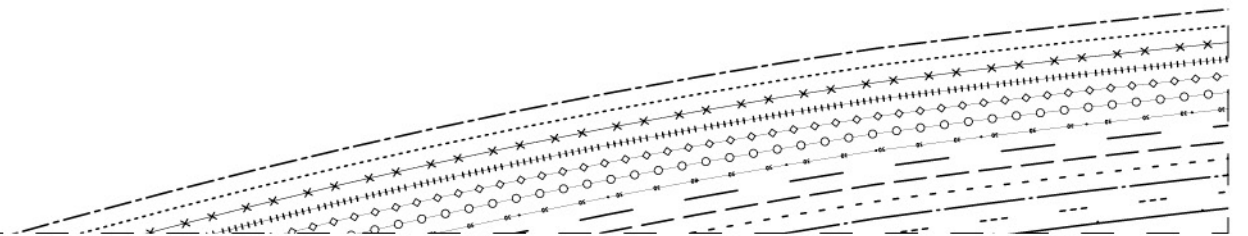
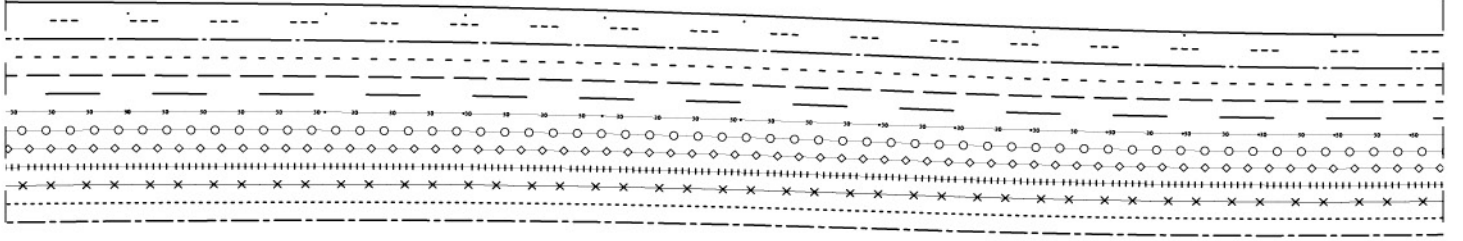


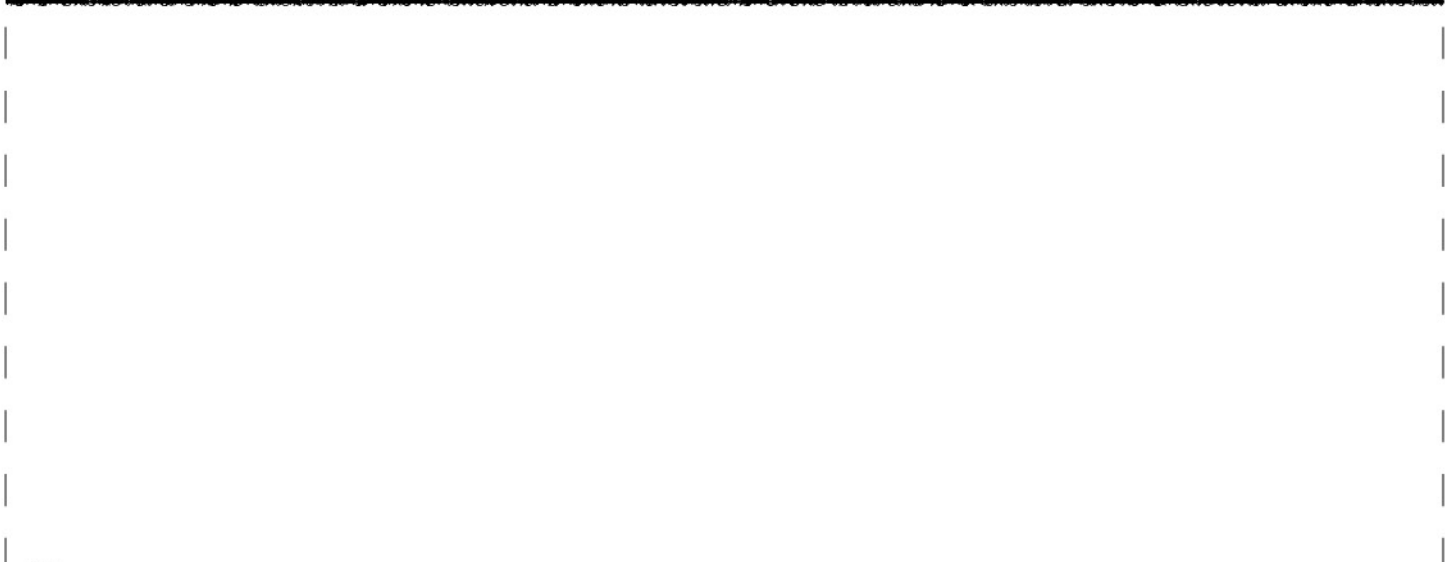
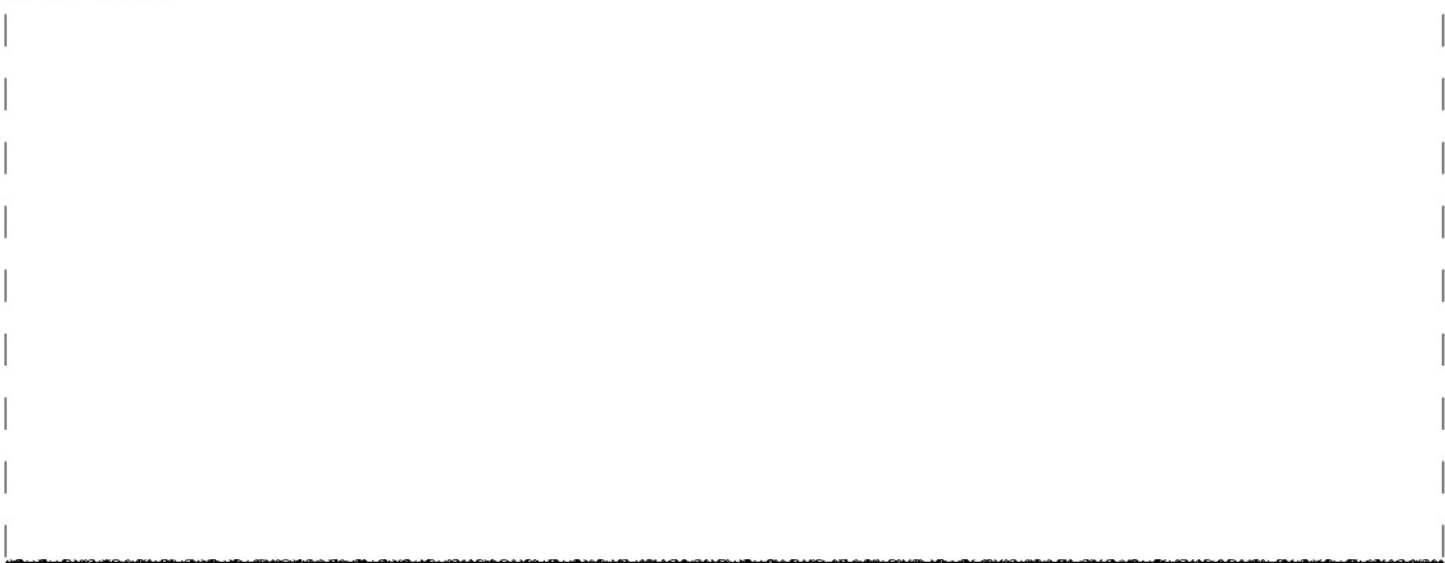
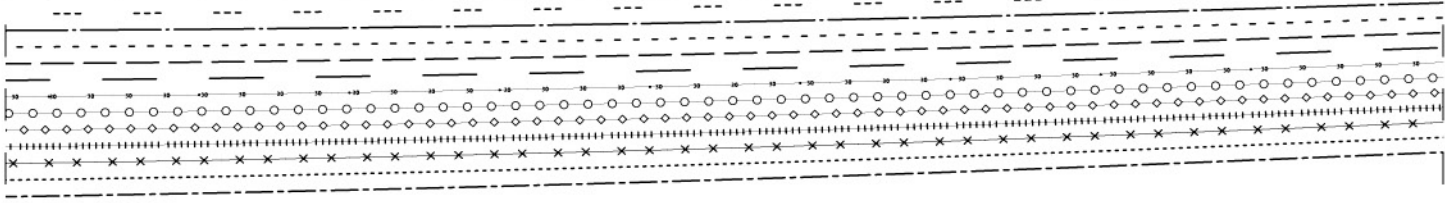
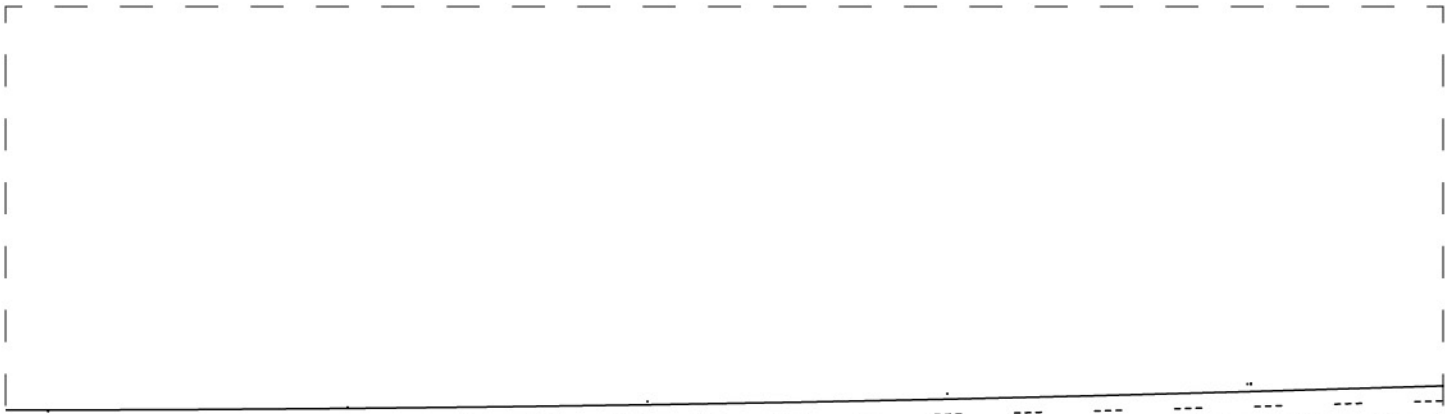
BORNE IN FRANCE
1083

2

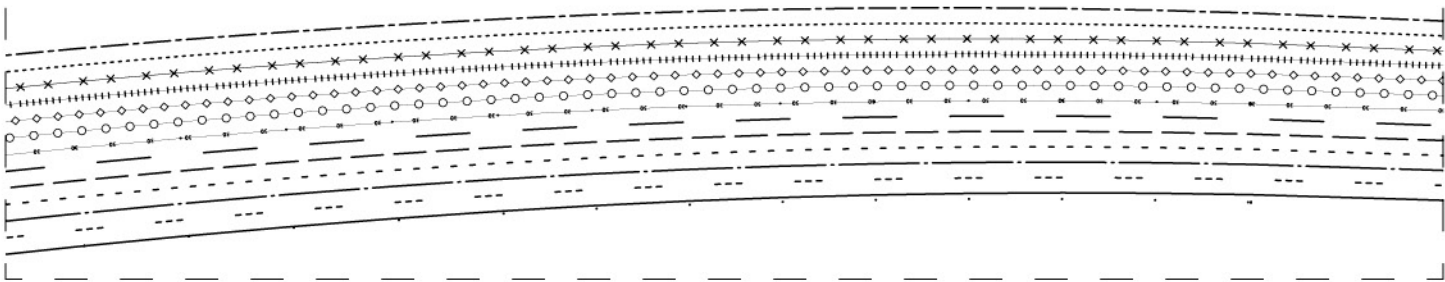
202BRU13

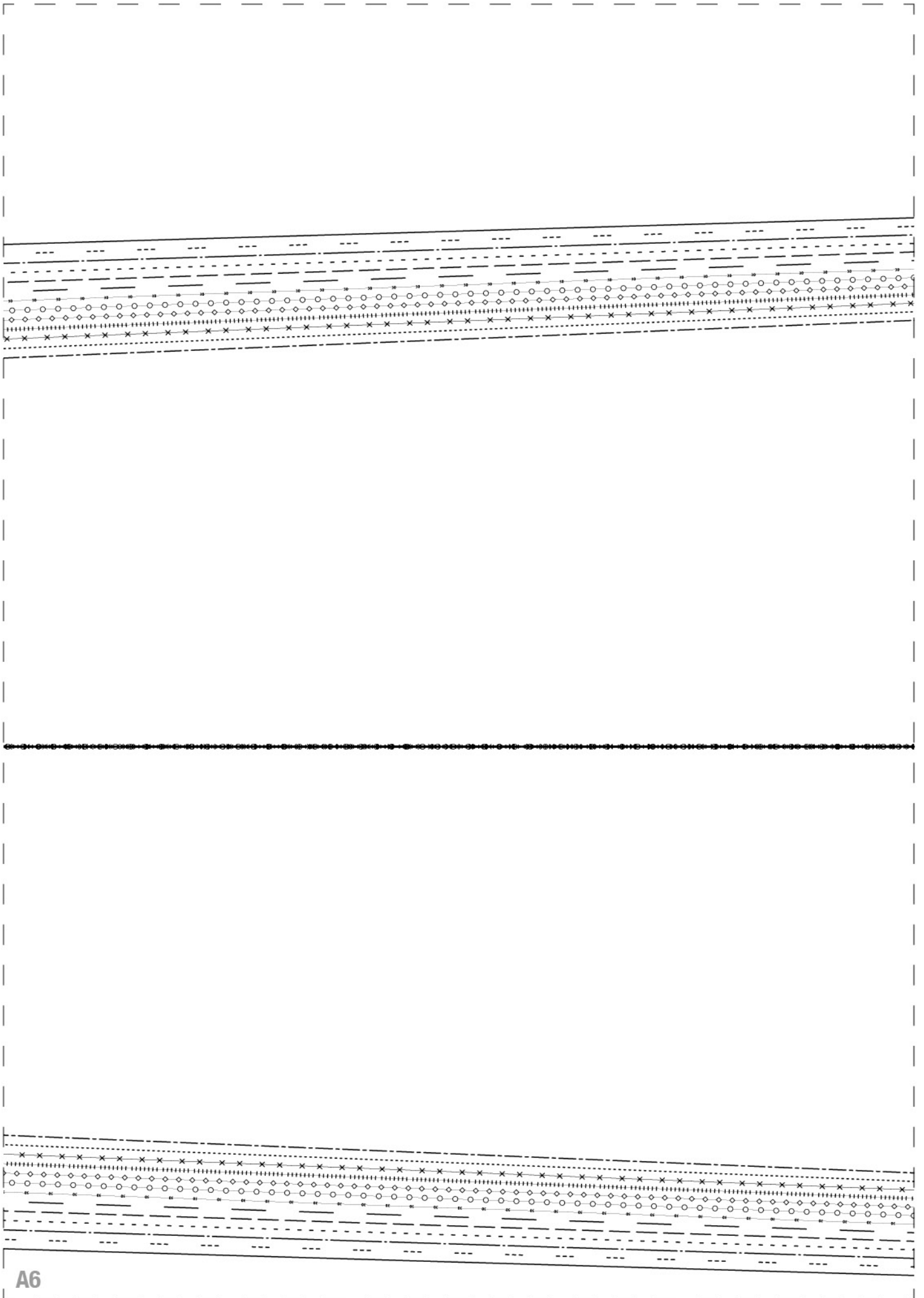
devant gauche x 1

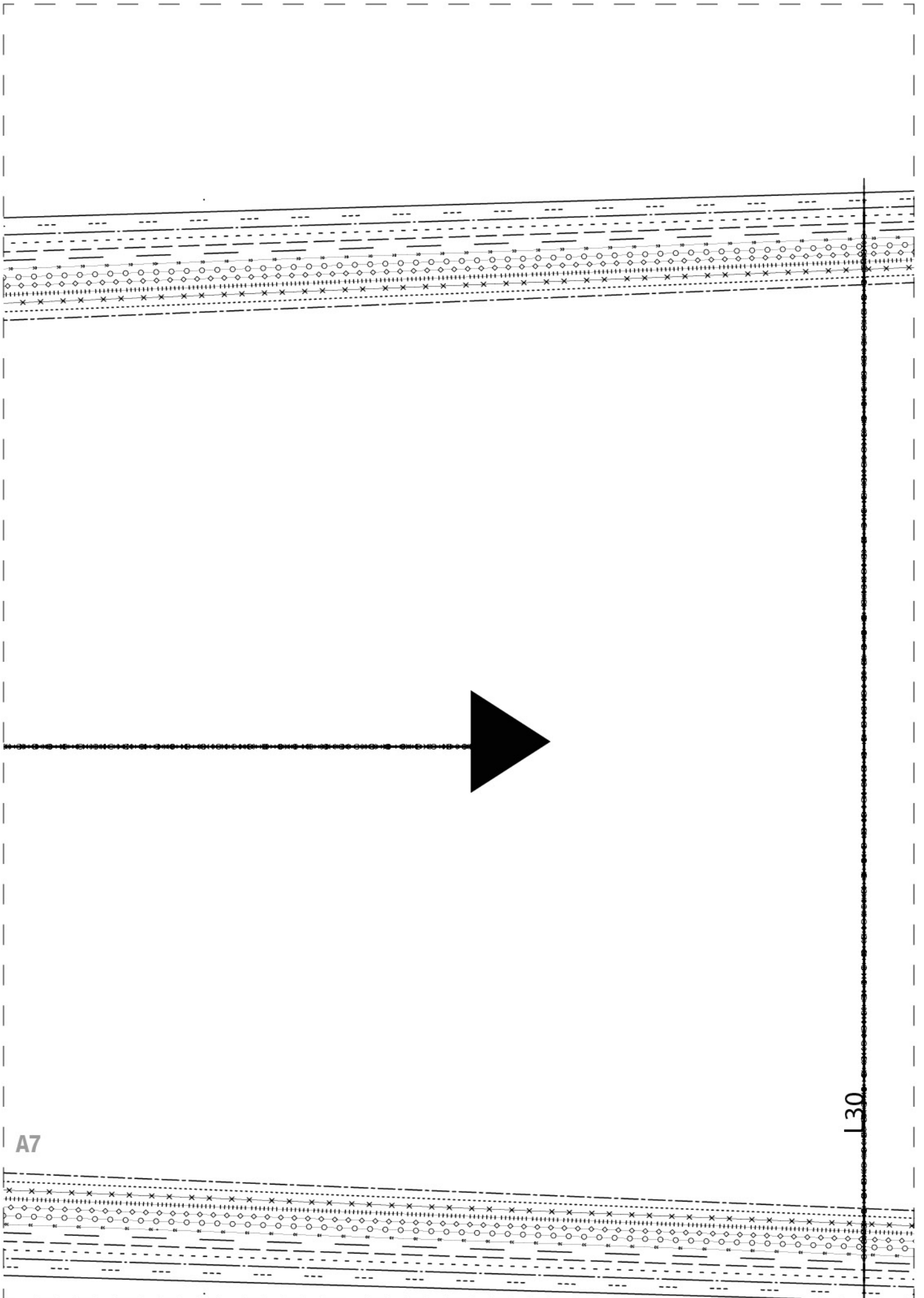




A5

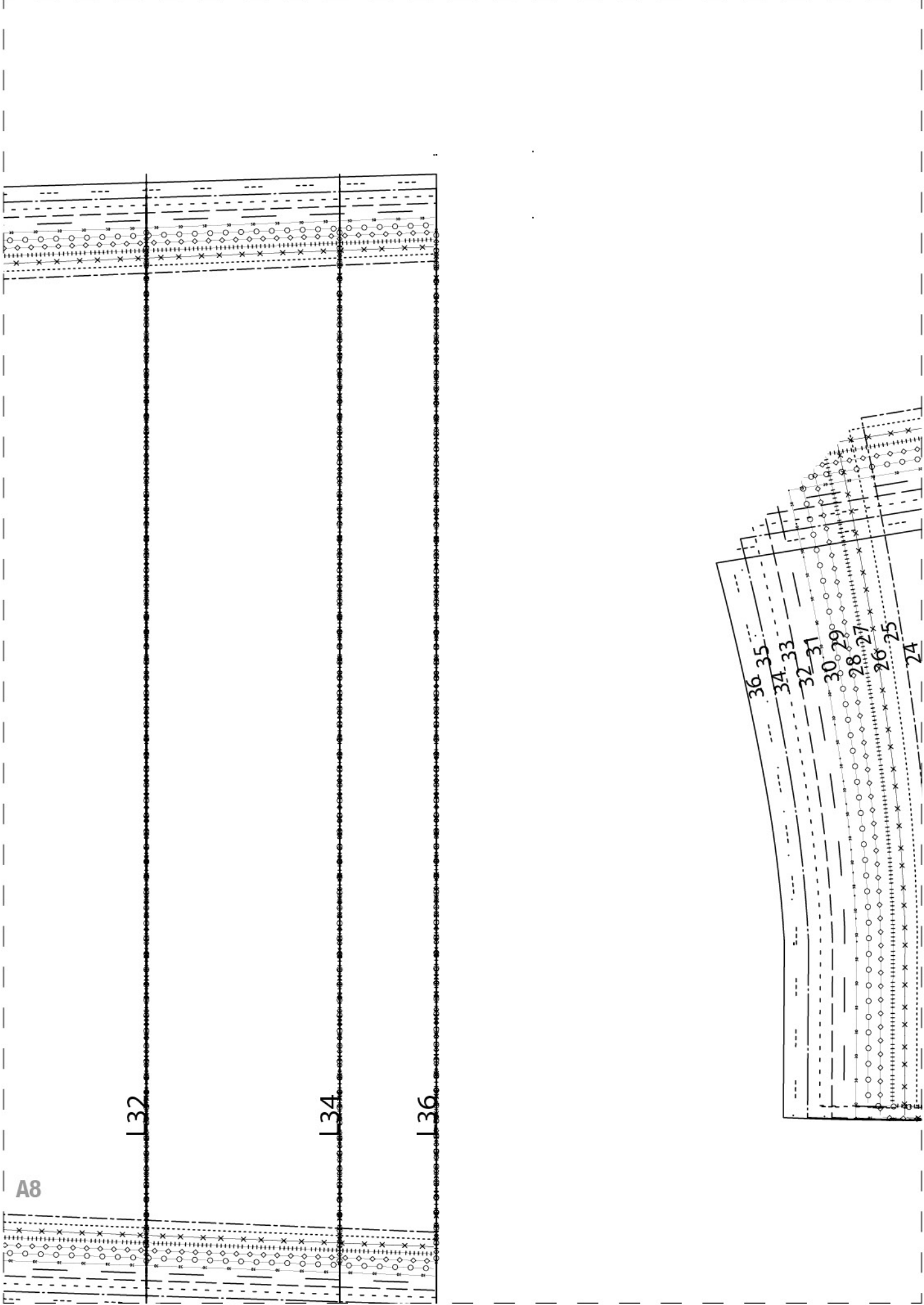






A7

130



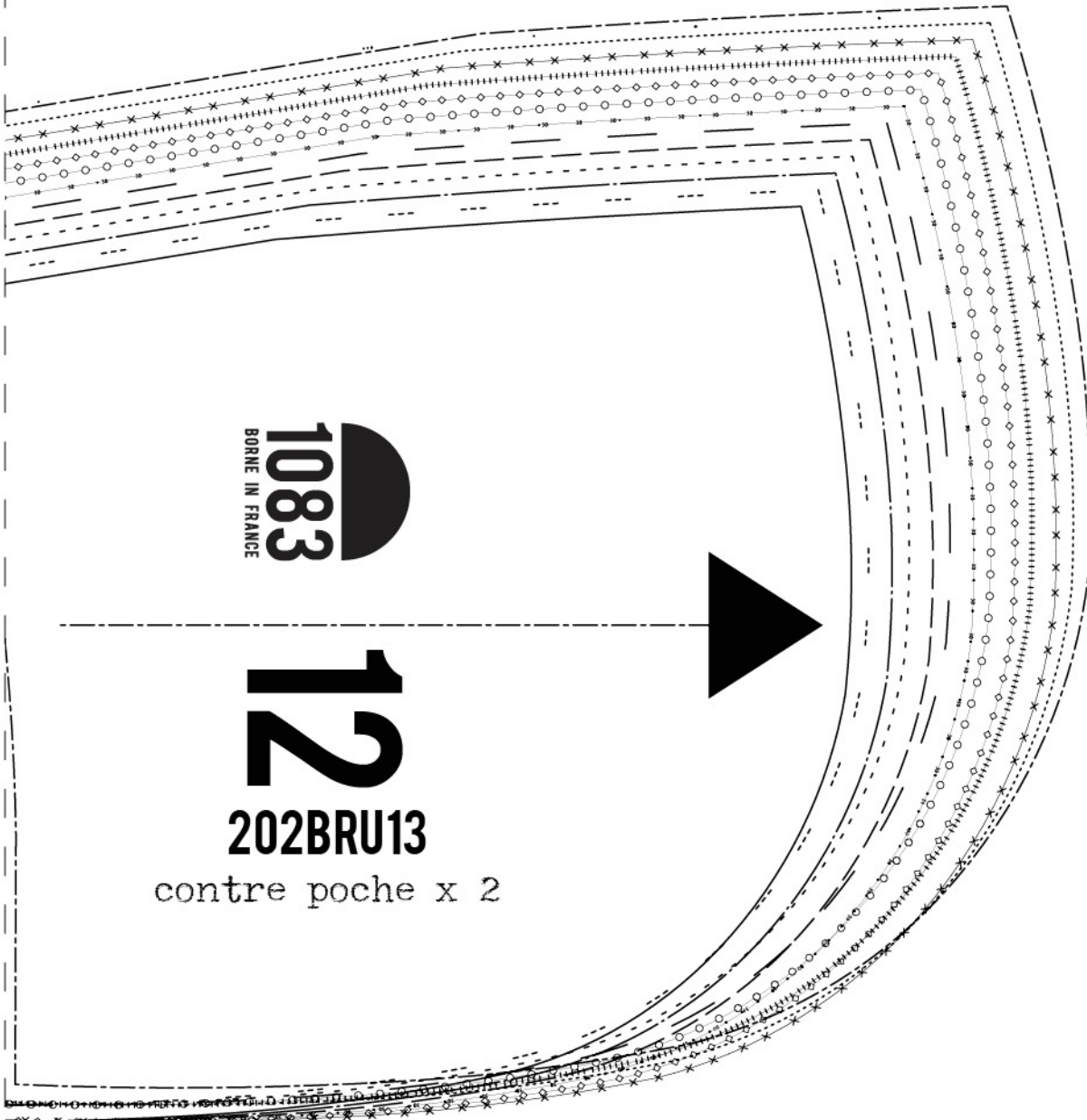
A8

132

134

136

36 35
34 33
32 31
30 29
28 27
26 25
24

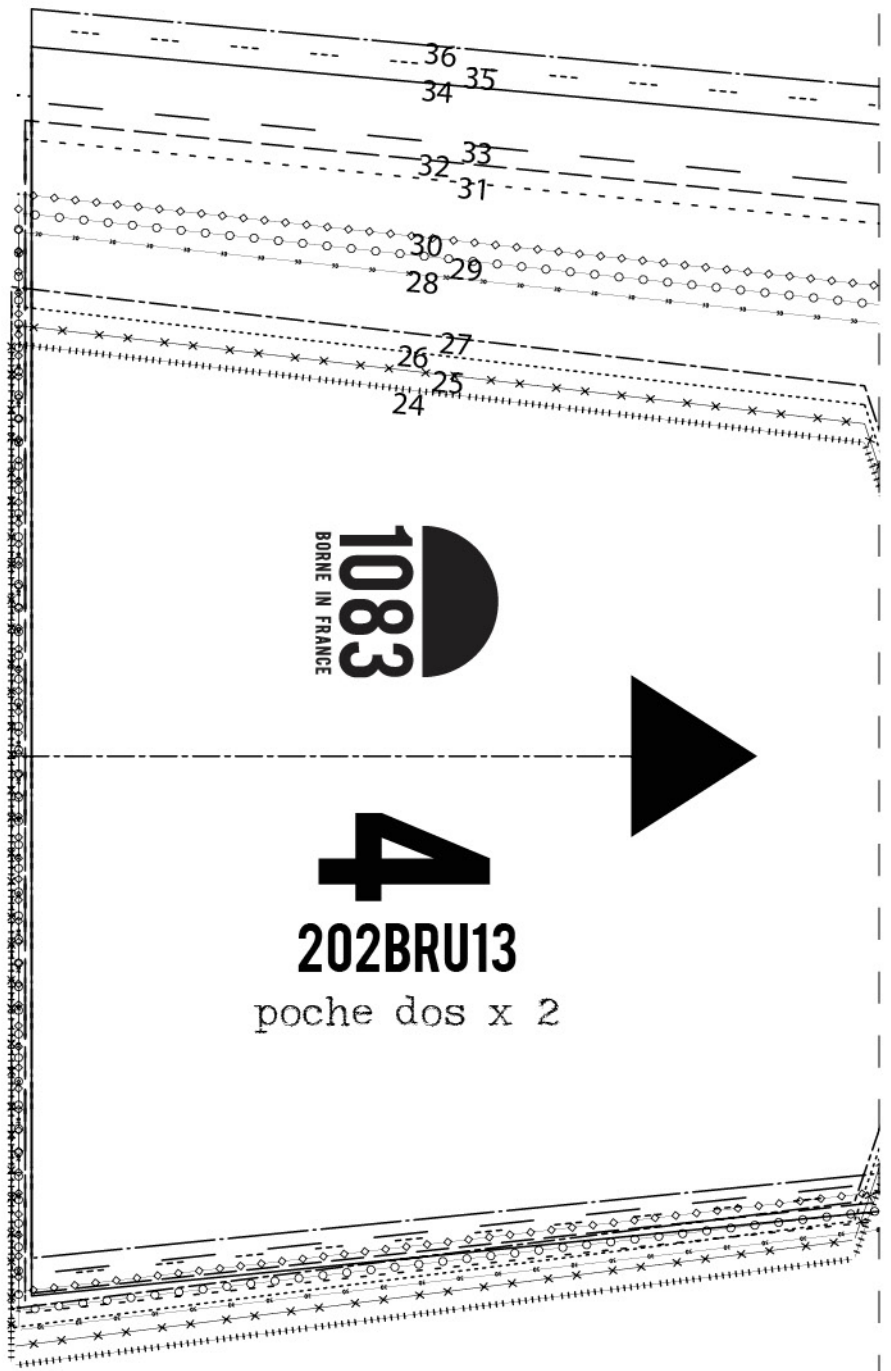


1083
BORNE IN FRANCE

12

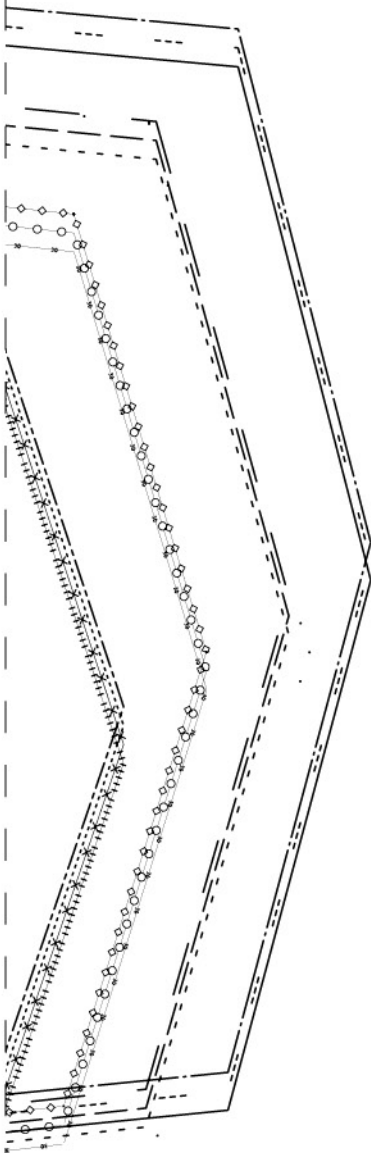
202BRU13

contre poche x 2

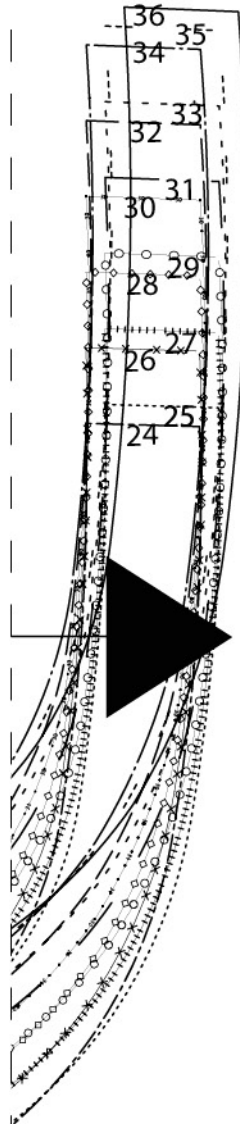
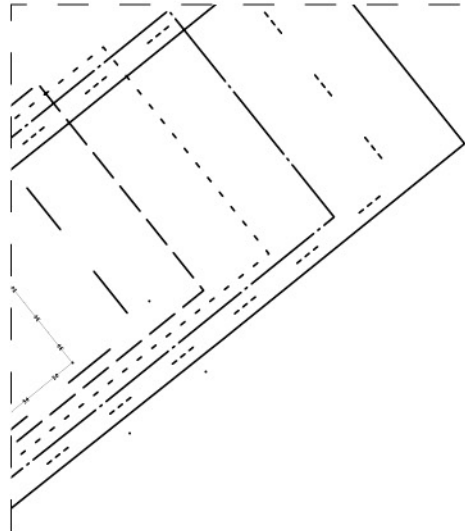


BORNE IN FRANCE
1083

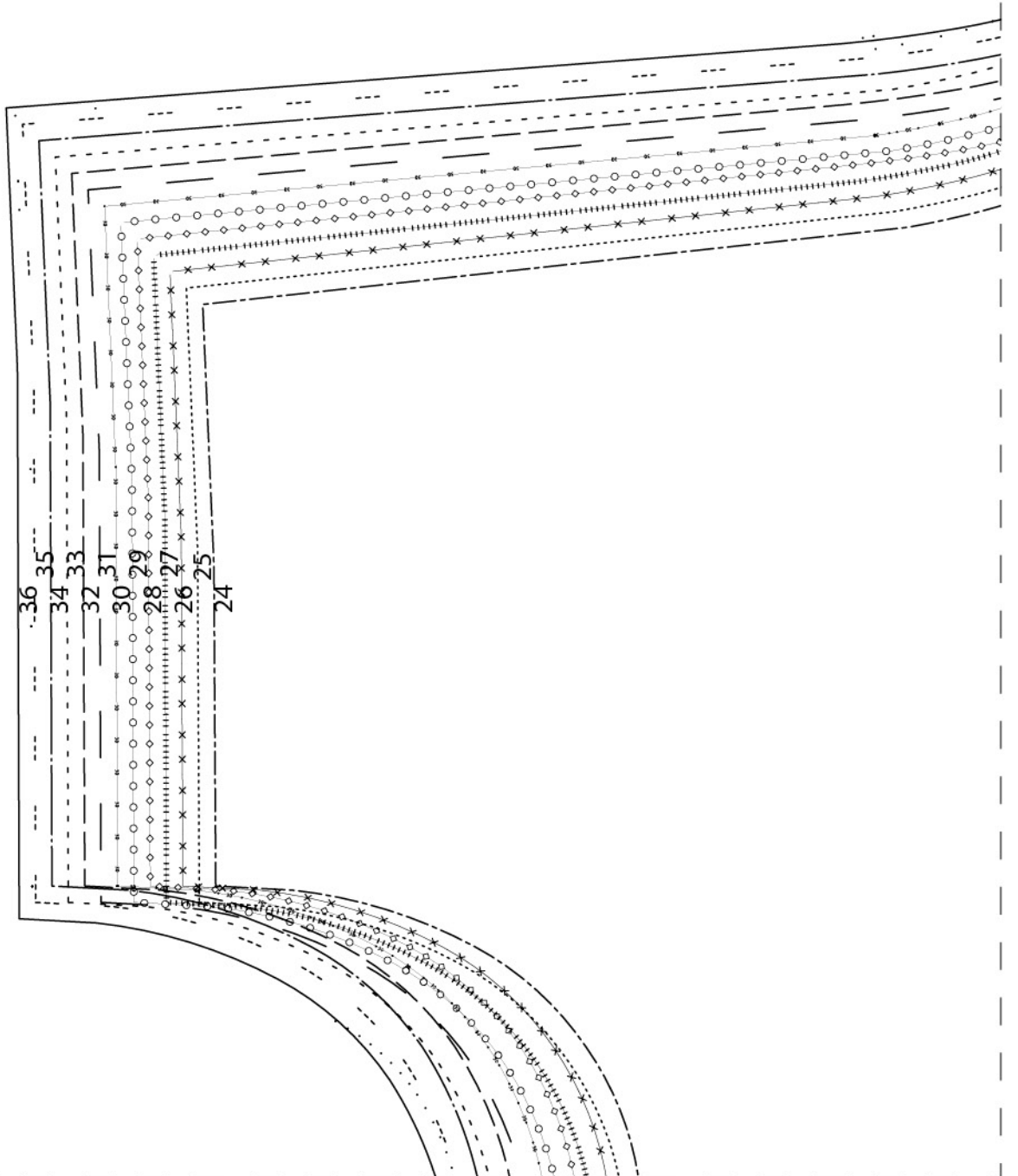
4
202BRU13
poche dos x 2



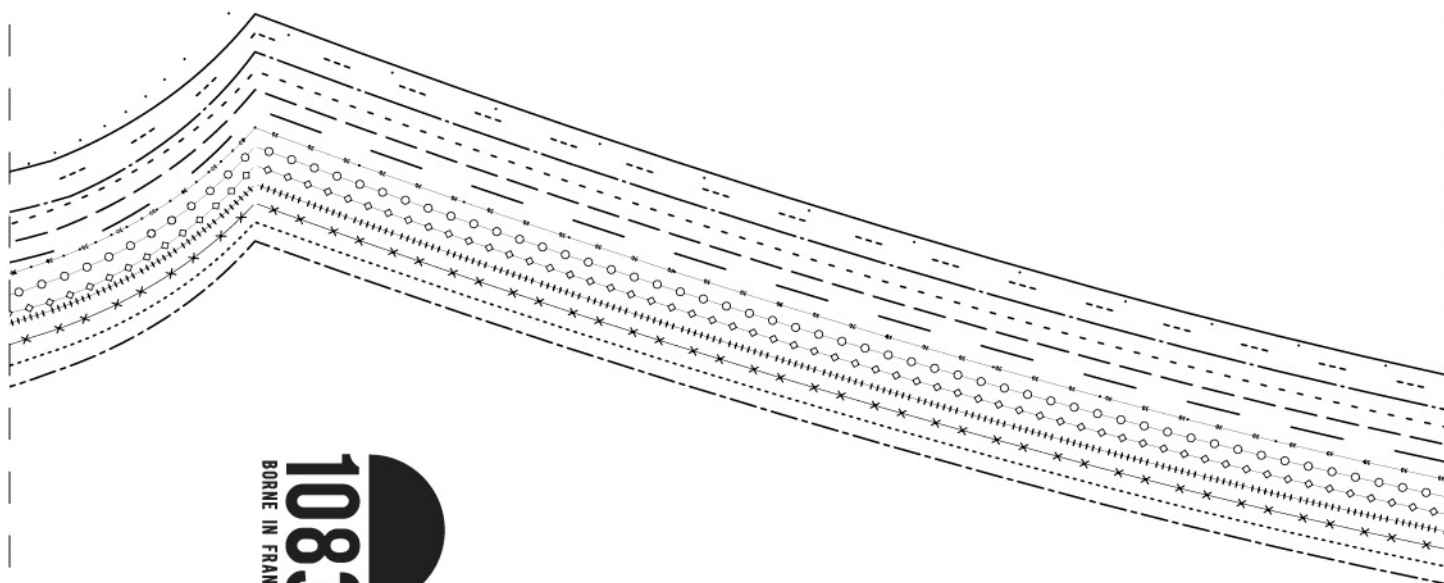
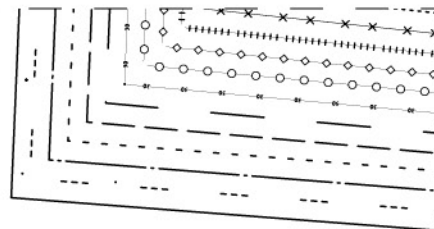
A11



B11



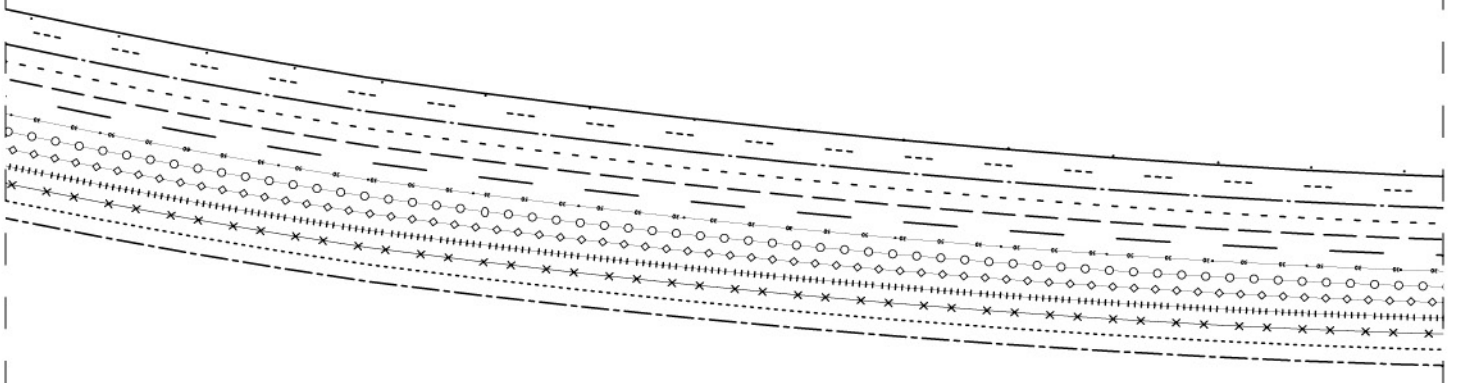
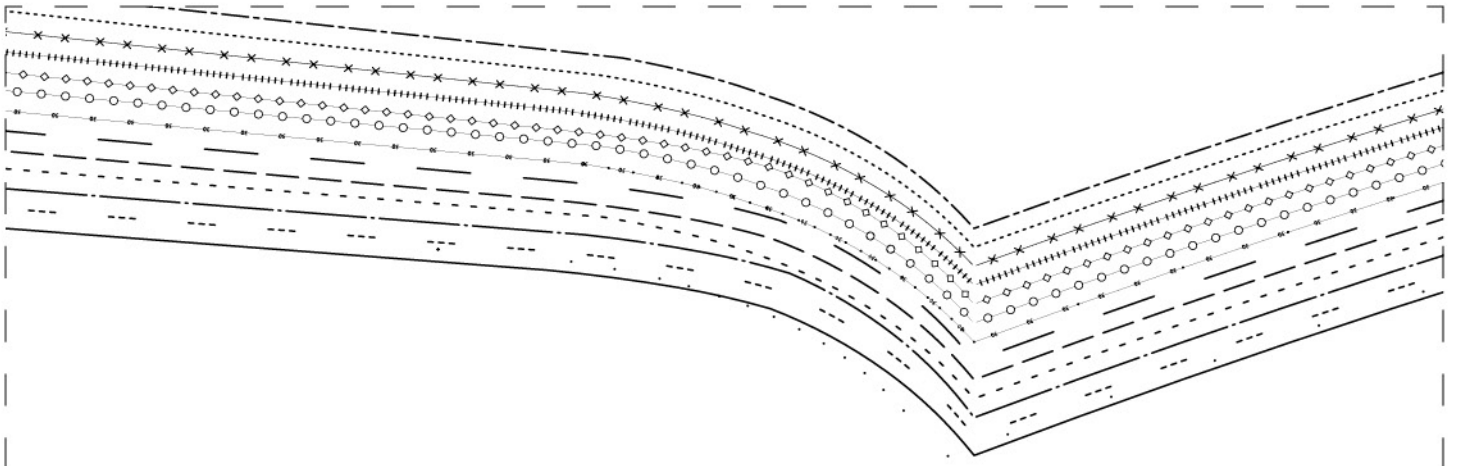
9
202BRU13
sous patte
braguette x 1

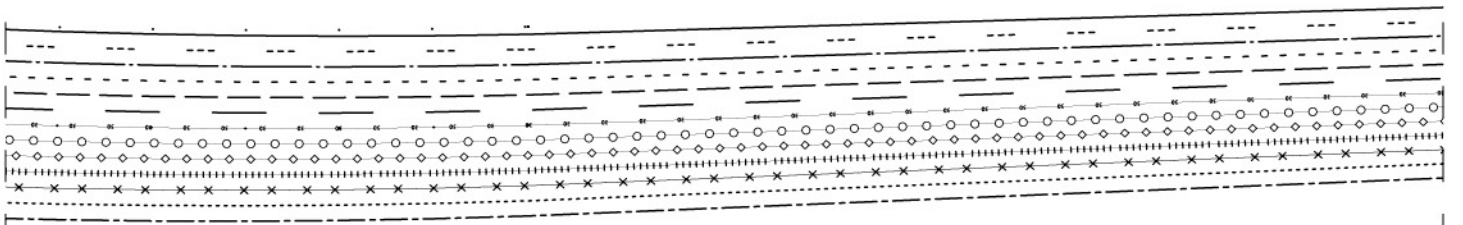
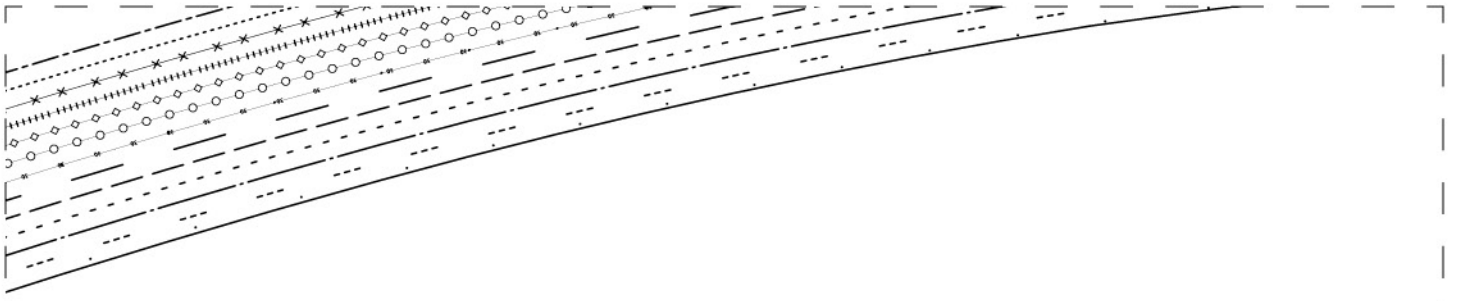


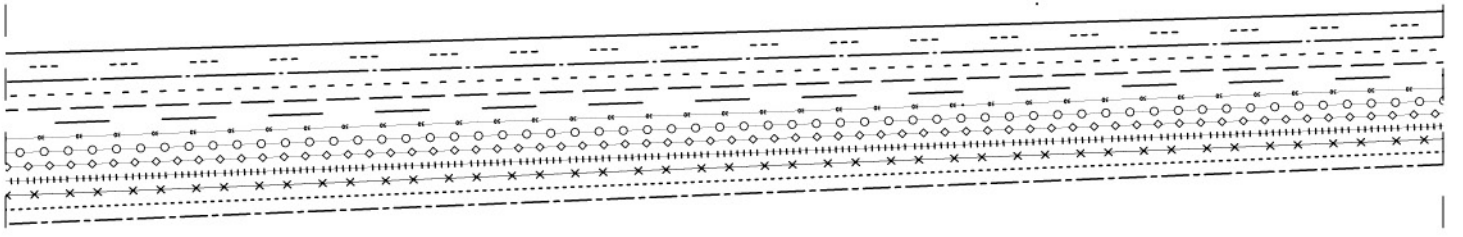
1083
BORNE IN FRANCE

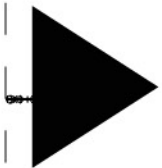
3
202BRU13
devant droit x 1



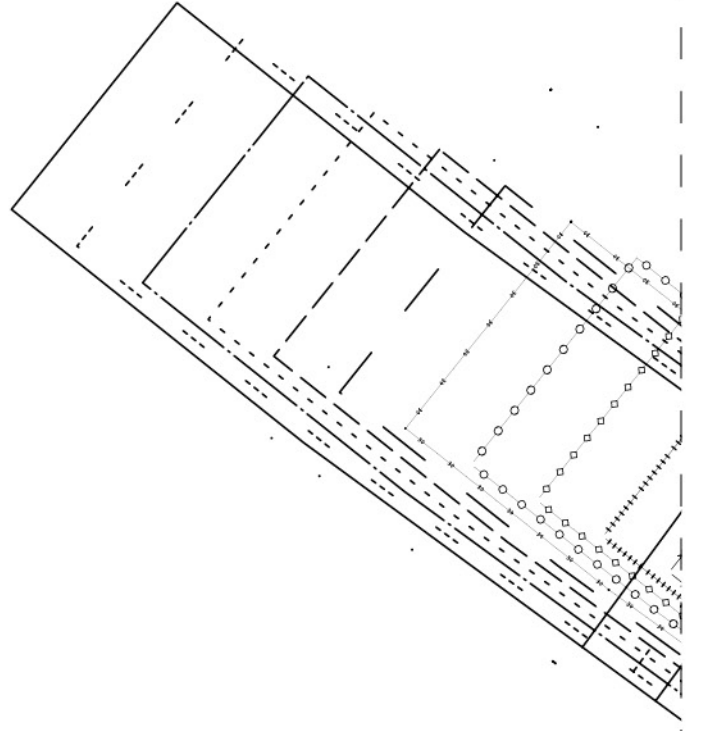
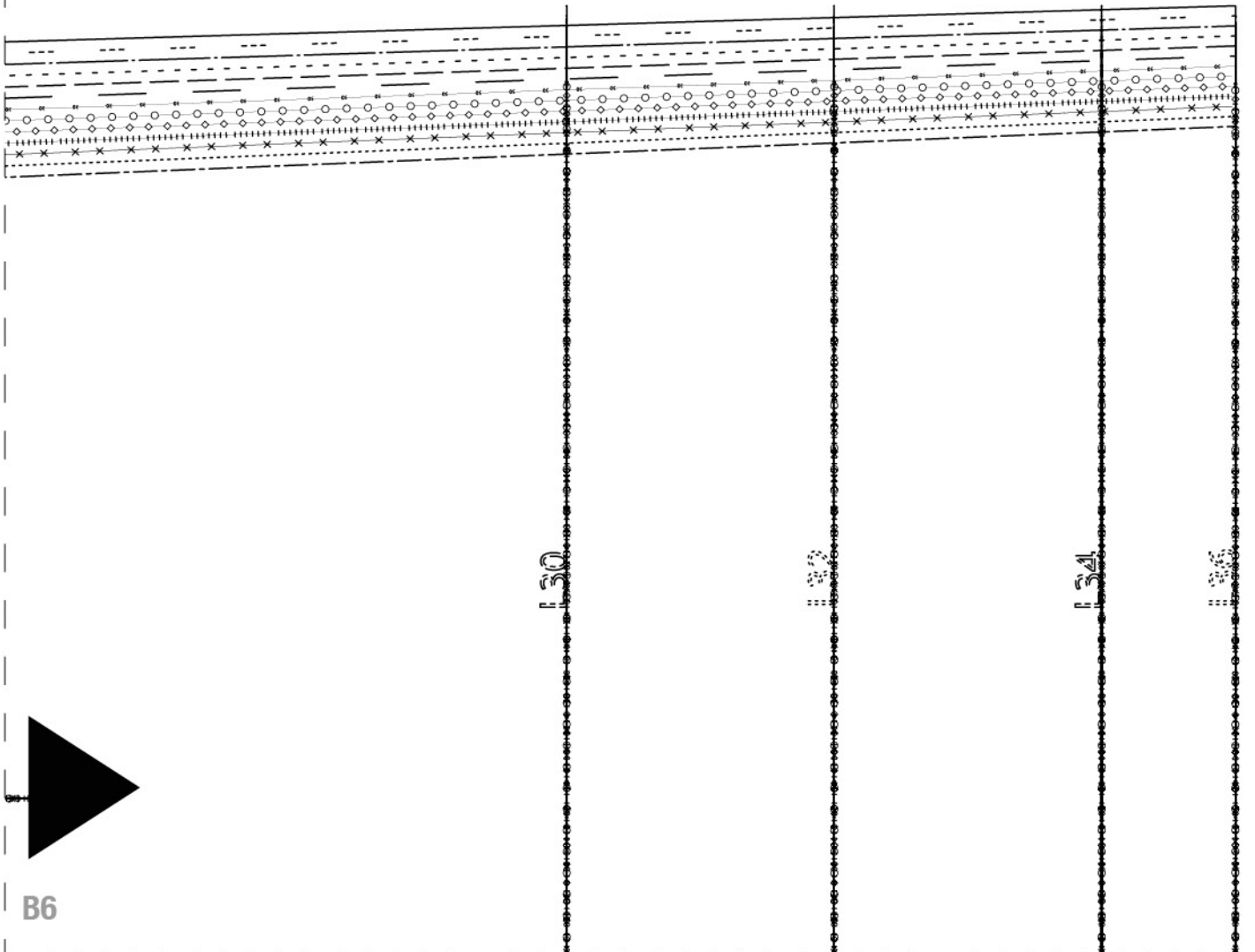


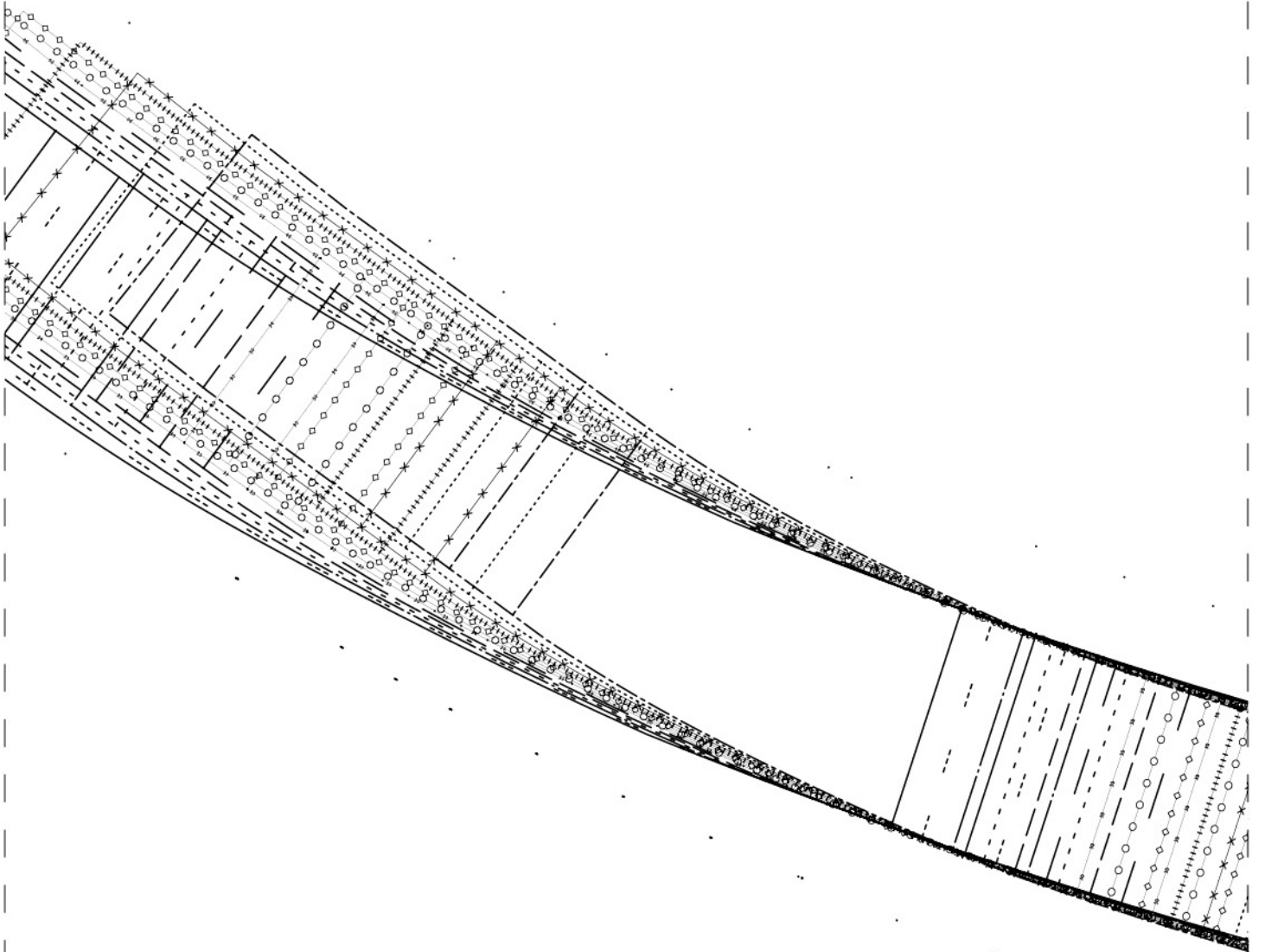


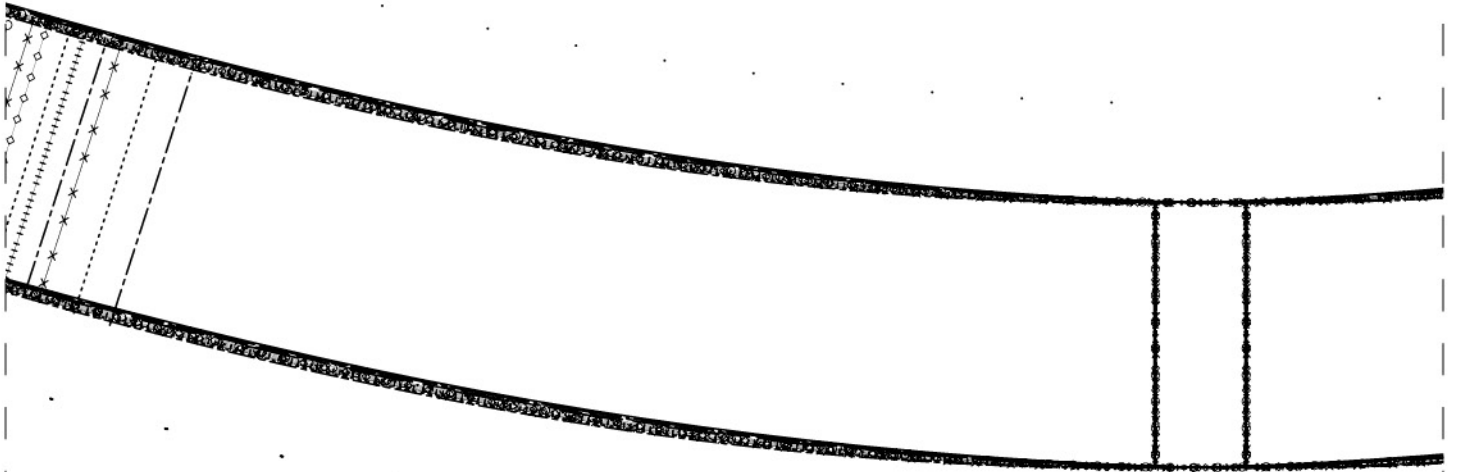




B6





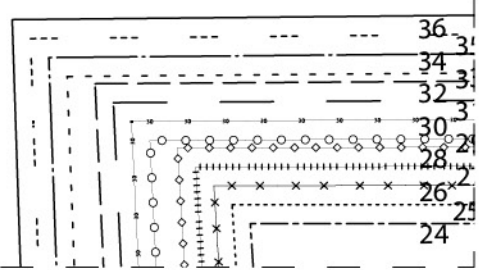
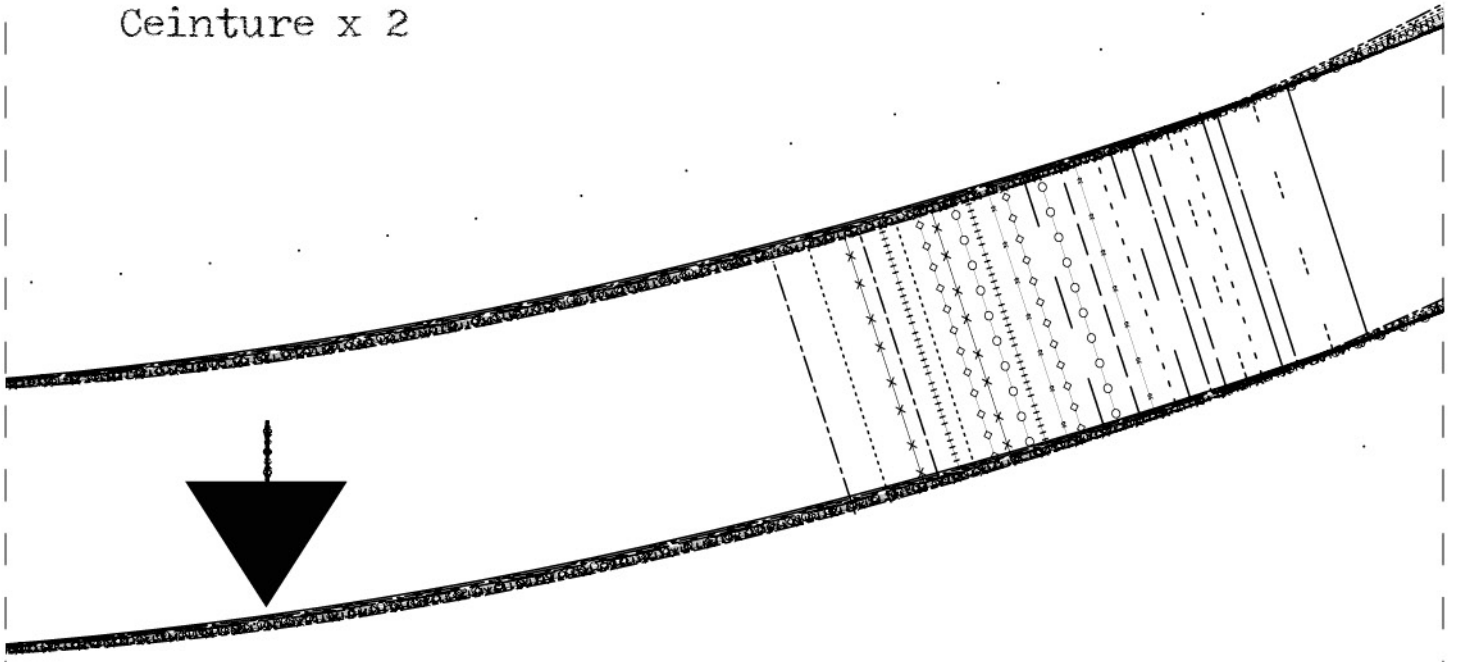


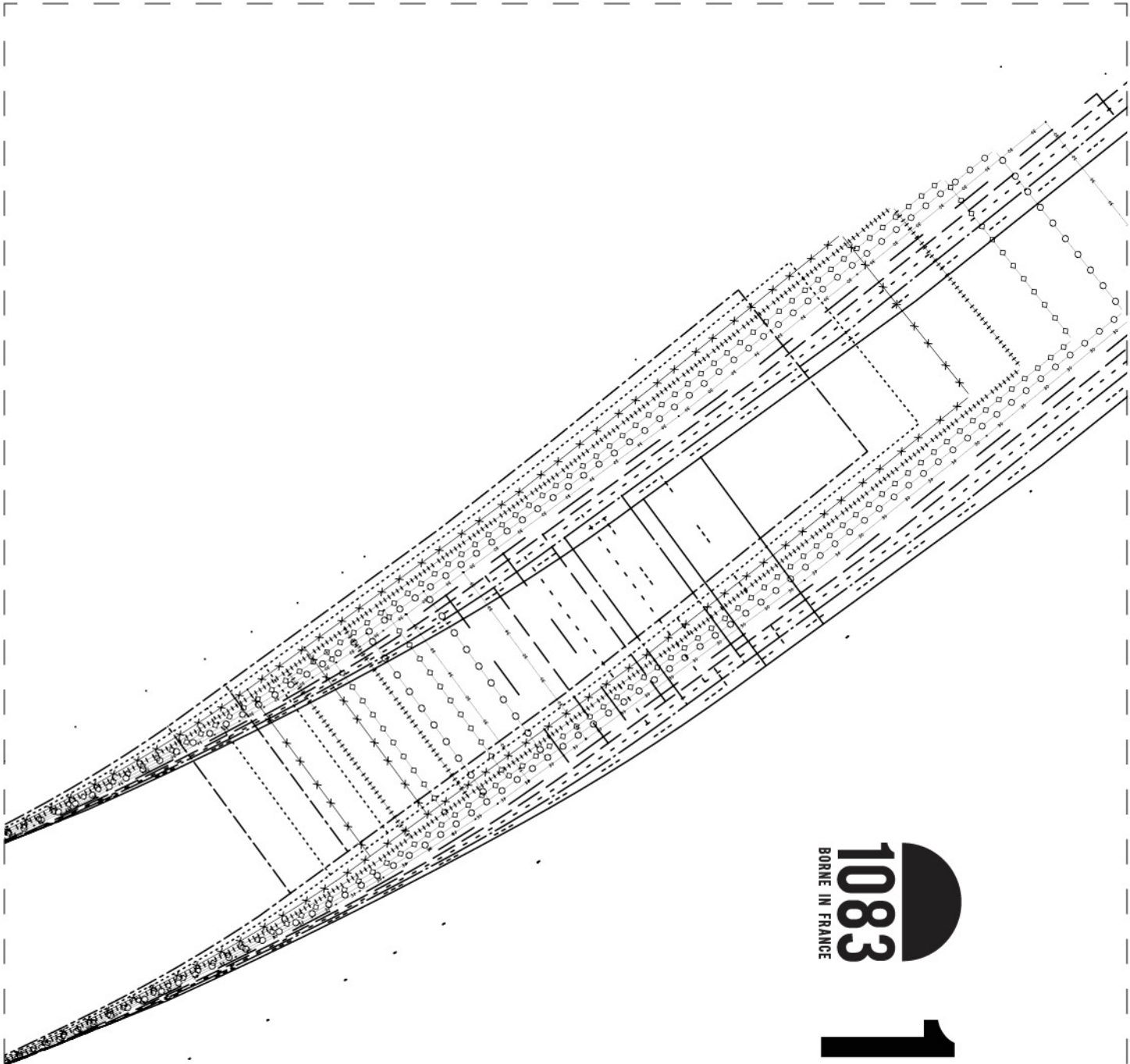
BORNE IN FRANCE
1083

7

202BRU13

Ceinture x 2





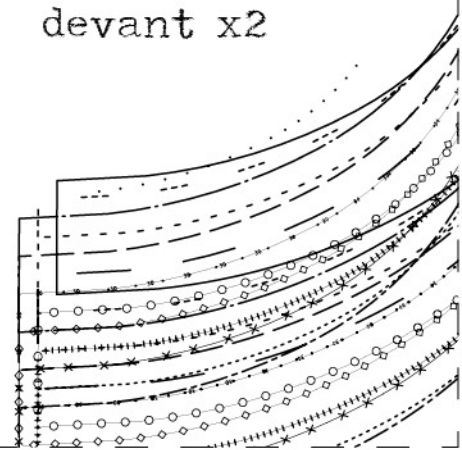
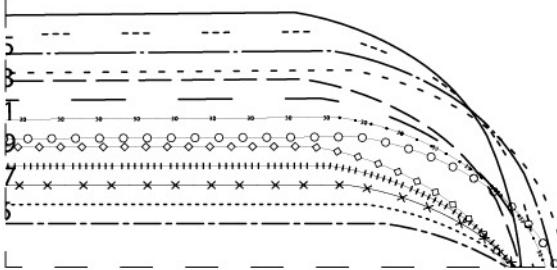
1083
BORNE IN FRANCE

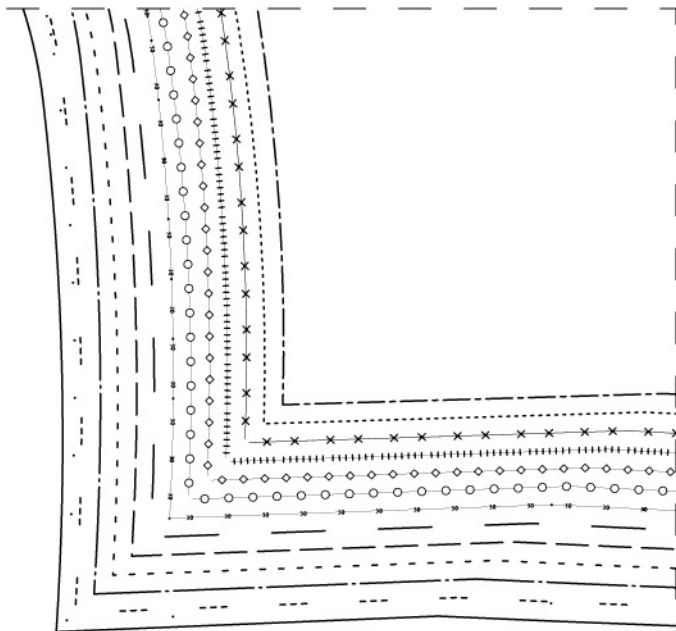
13

202BRU13

enforme poche
devant x2

B10





202BRU13 : Jeans femme bootcut

MATÉRIAUX :

Denim pour le pantalon et satin de coton pour les fonds de poche.

TAILLES AMÉRICAINES :

largeur du 24 au 36 et longueur du 30 au 36.

ACCESSOIRES :

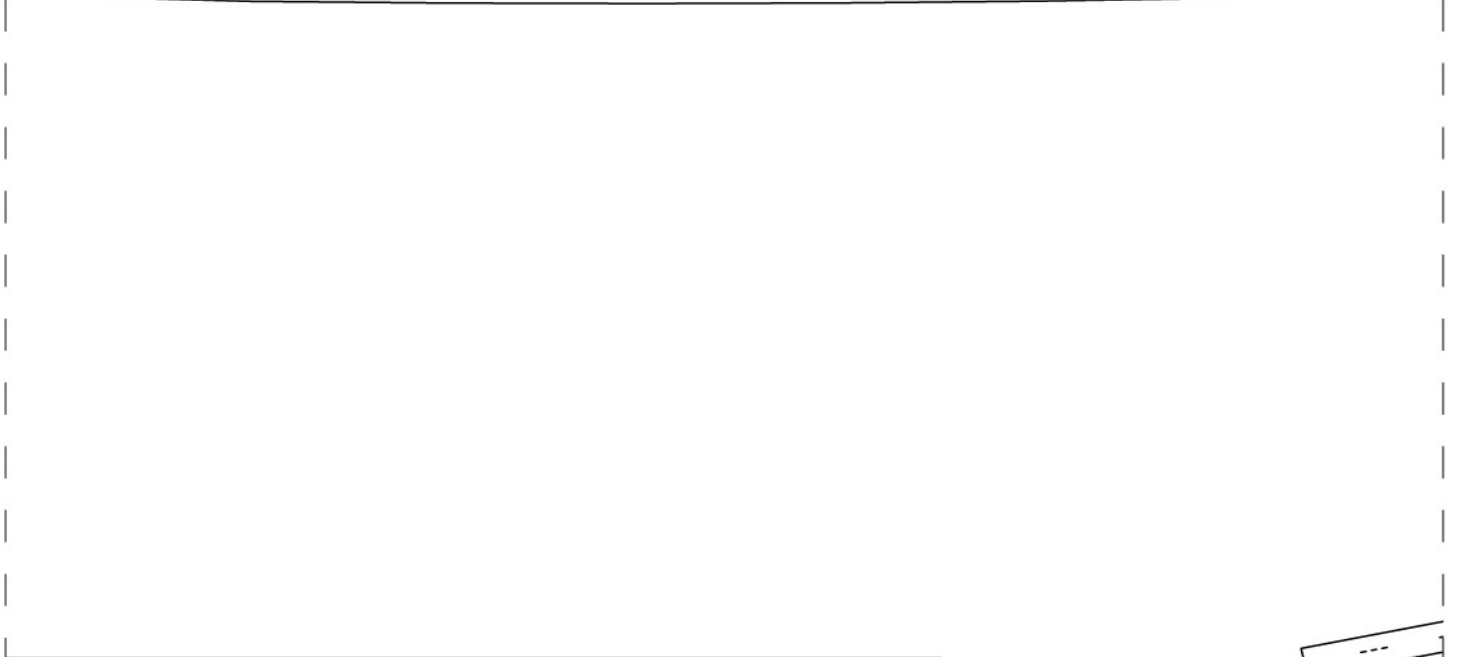
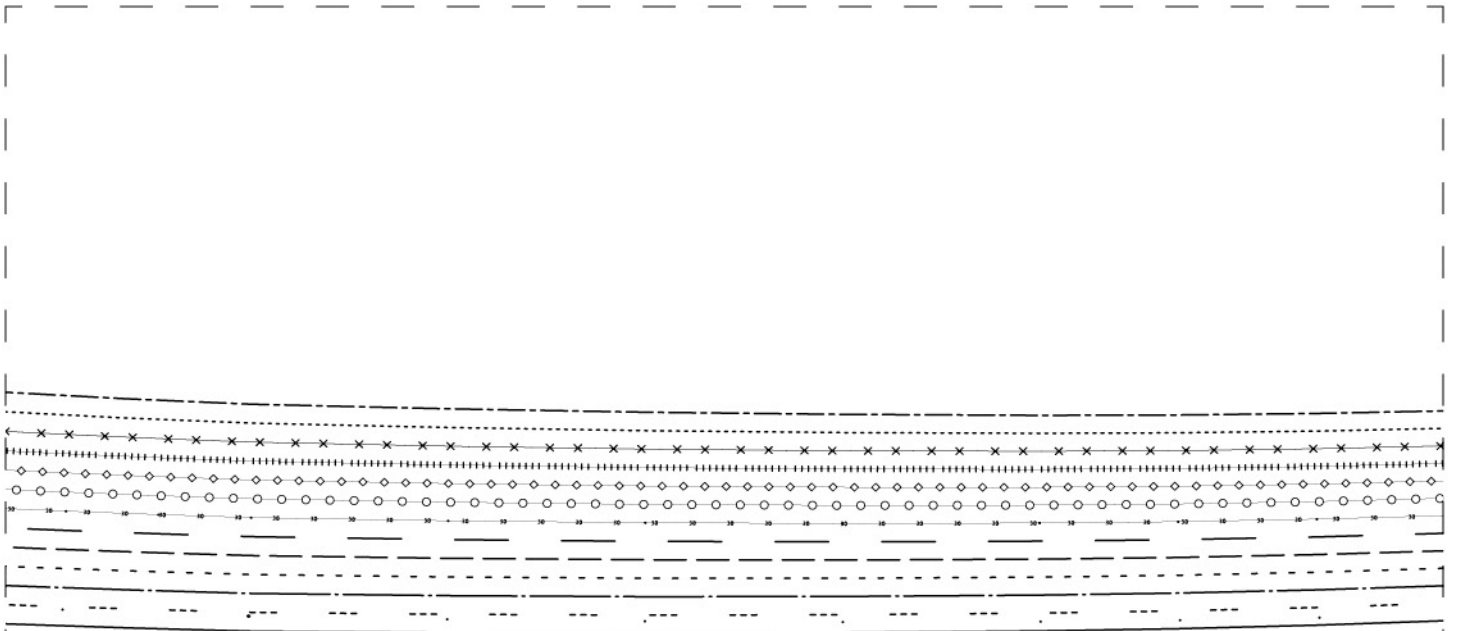
6 Rivets en inox 10 mm

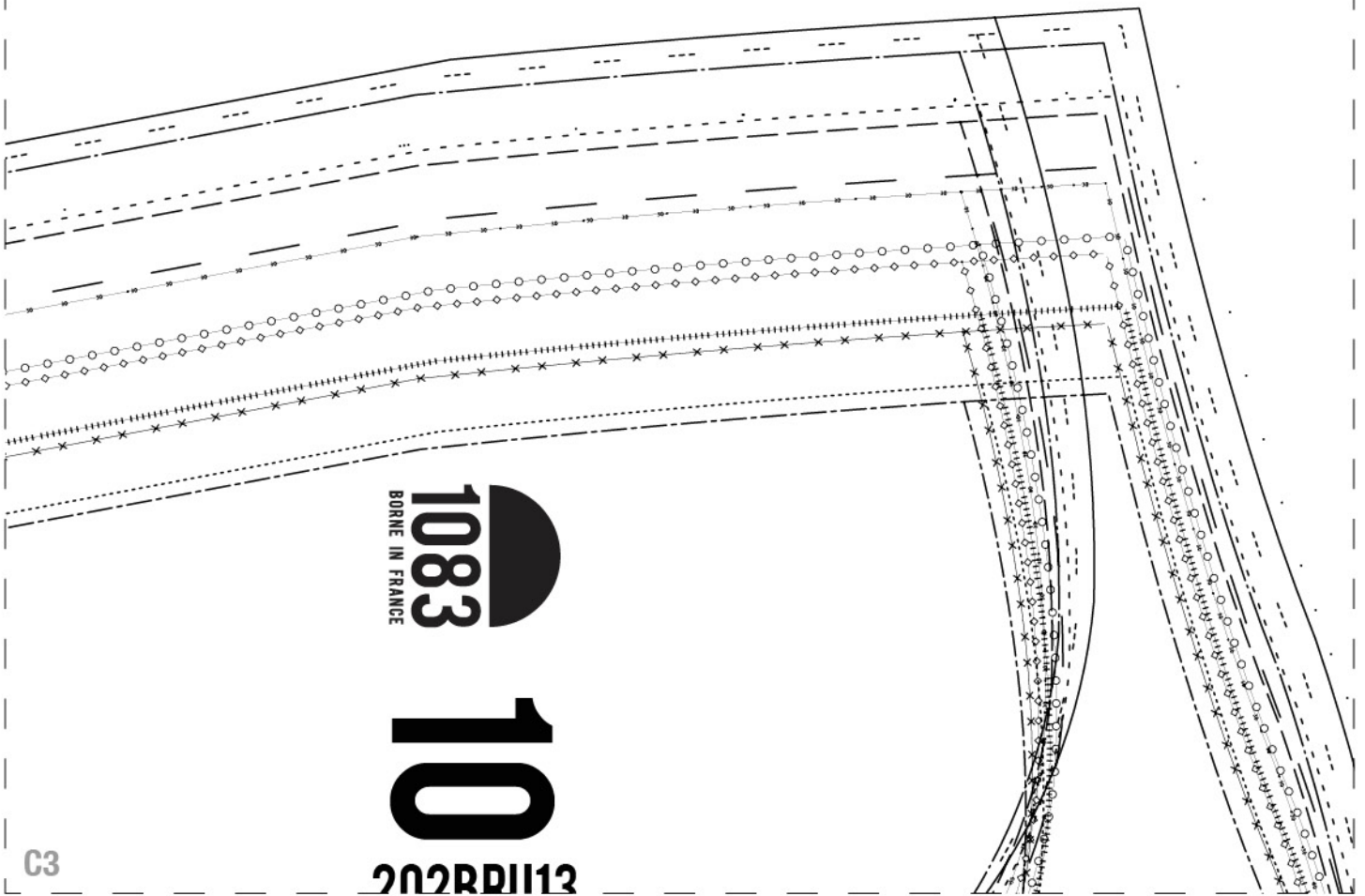
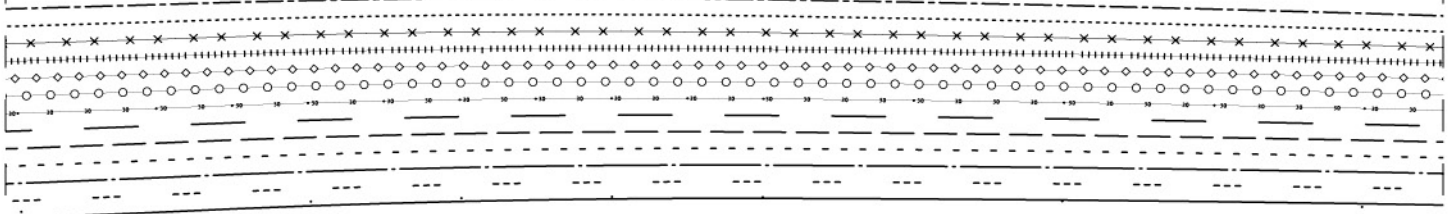
1 fermeture à glissière

1 bouton inox gravé laqué rouge 17mm

Bais rouge 30mm finition intérieur ceinture

1 iacron.Cuir



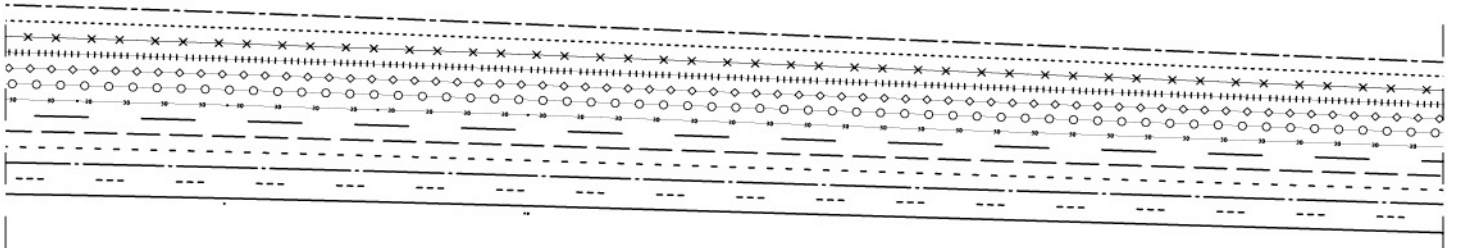


1083
BORNE IN FRANCE

10

202RDI13

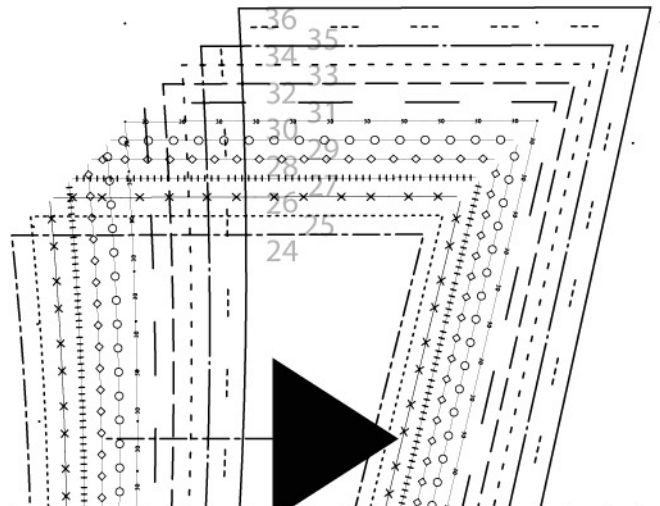
C3



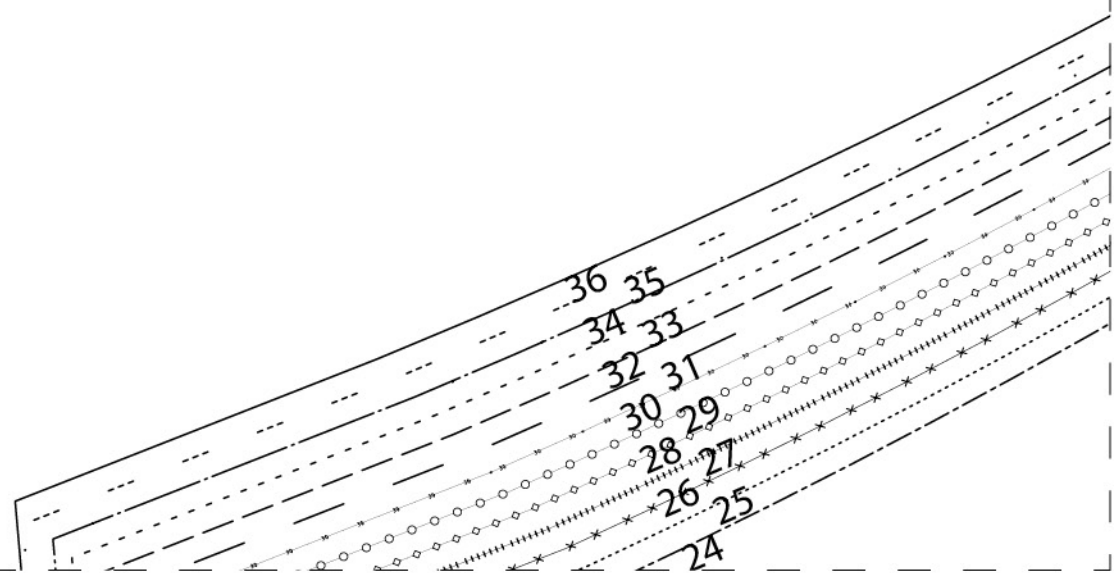
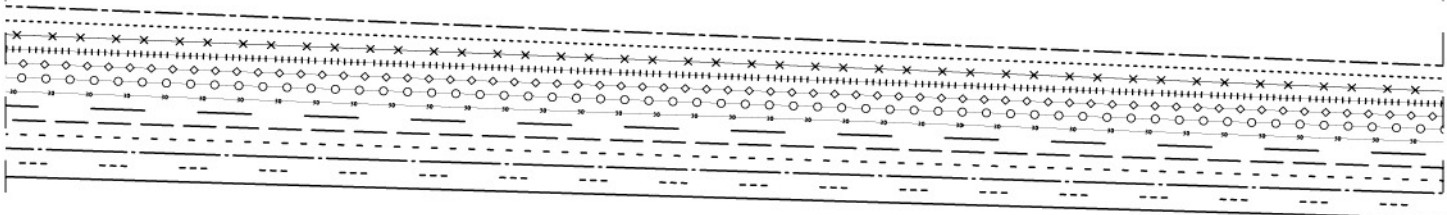
1083
BORNE IN FRANCE

11

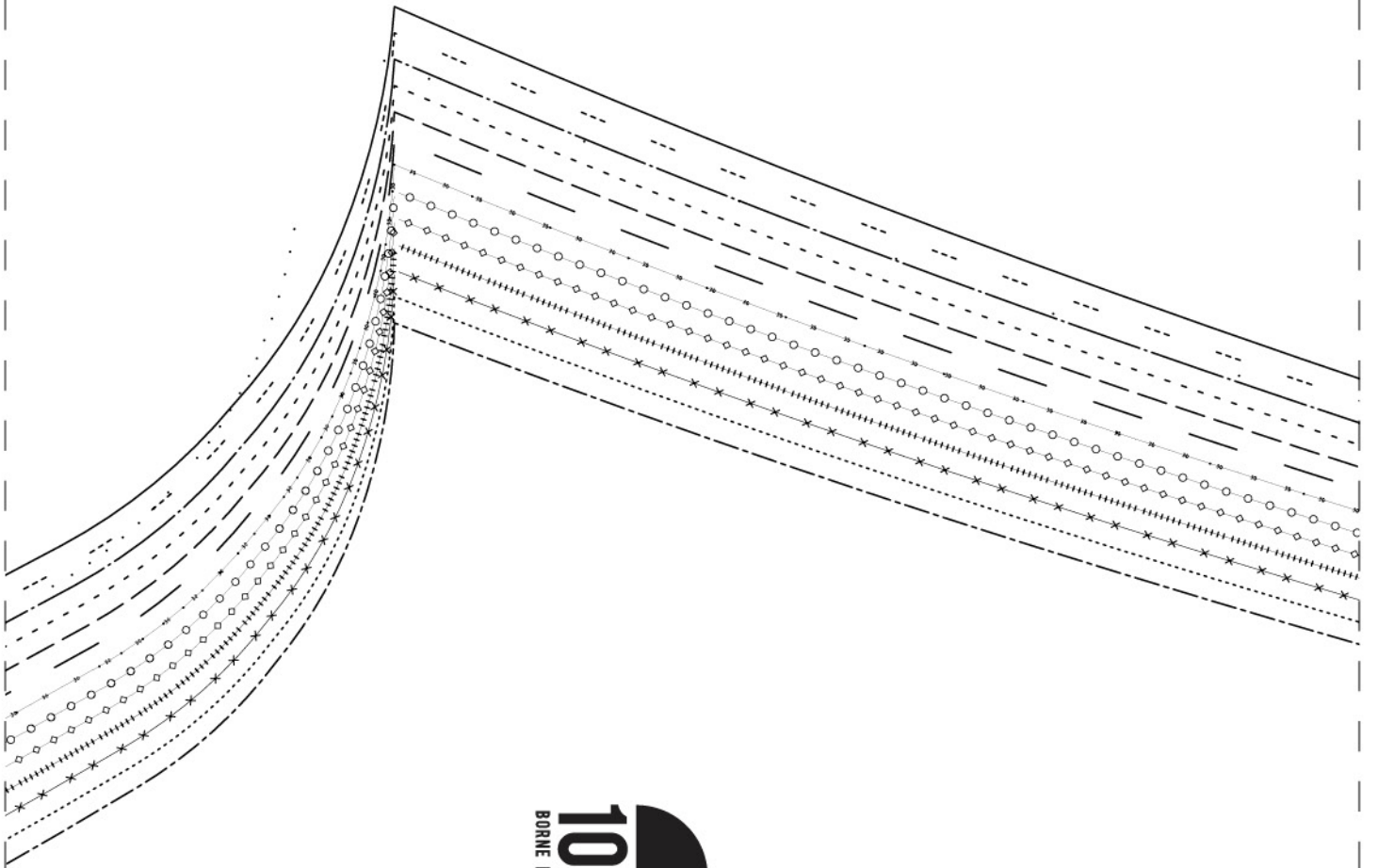
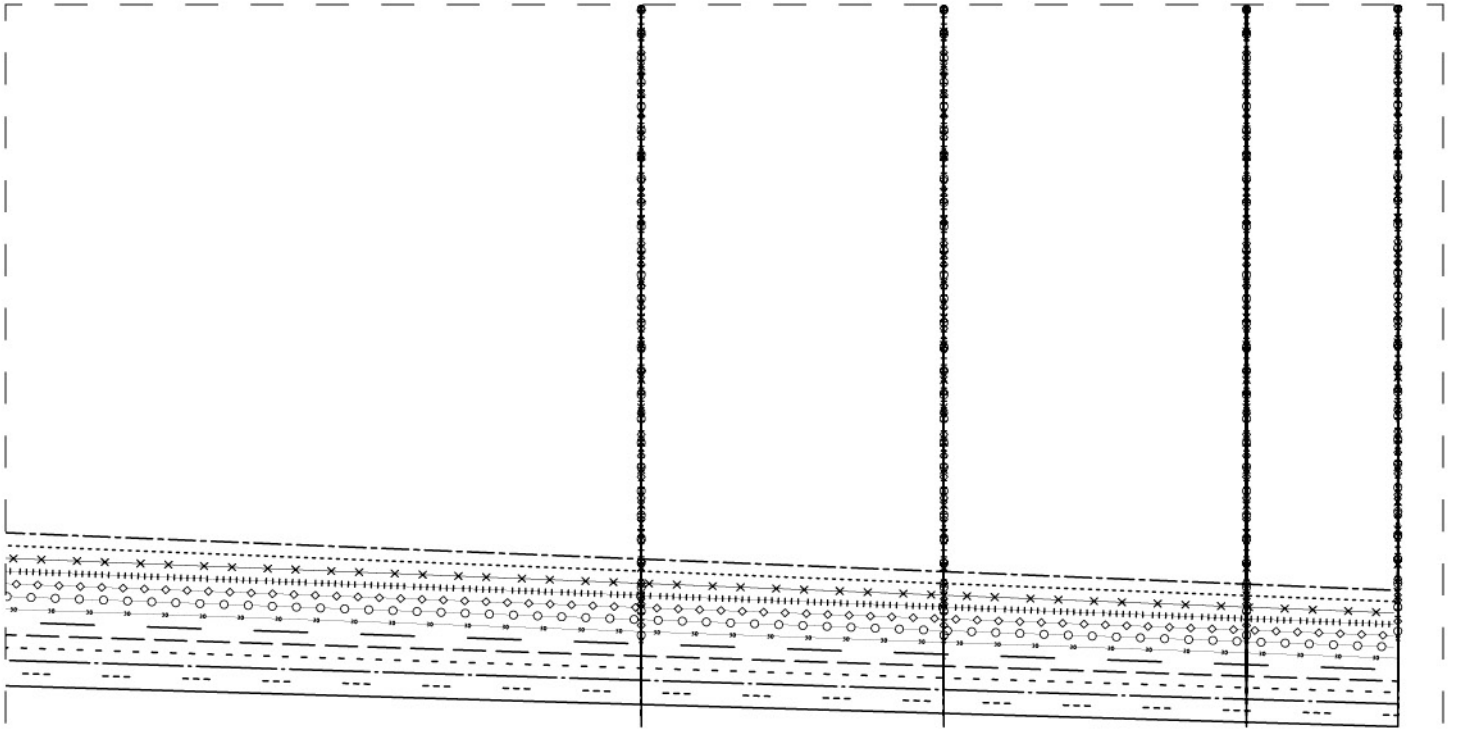
202BRU13
réhausse x 2



C4



C5



1083
BORNE IN FRANCE

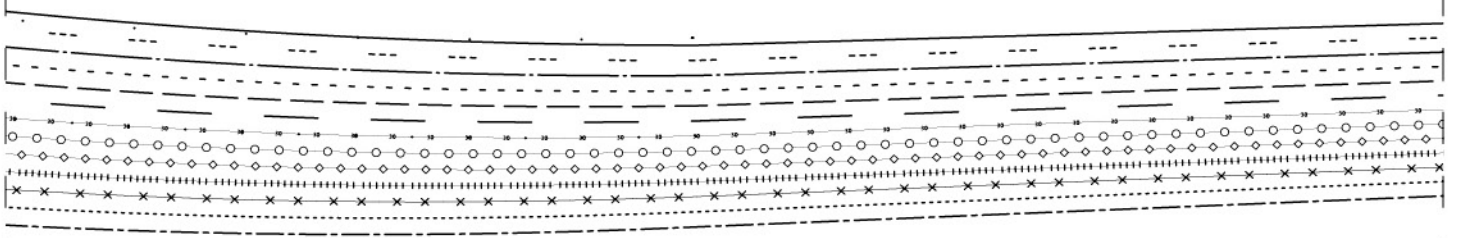
1

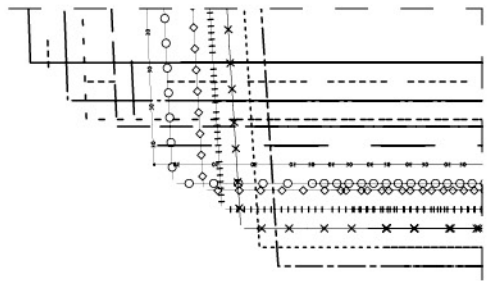
1083
BORNE IN FRANCE

14

202BRU13

bande 5 passant de 8,5 cm

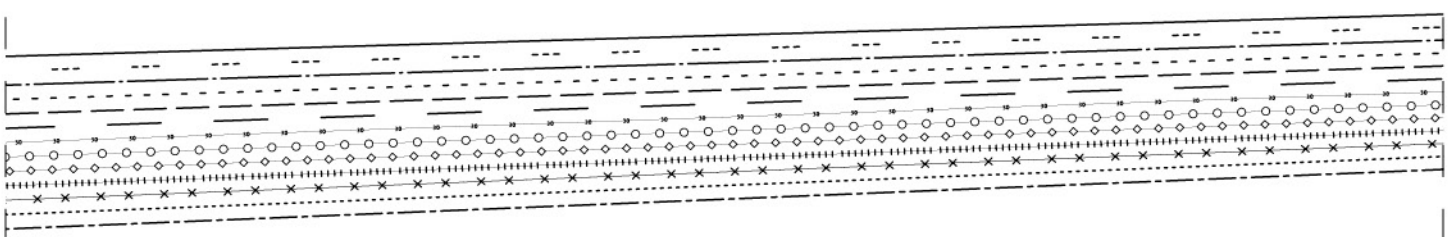
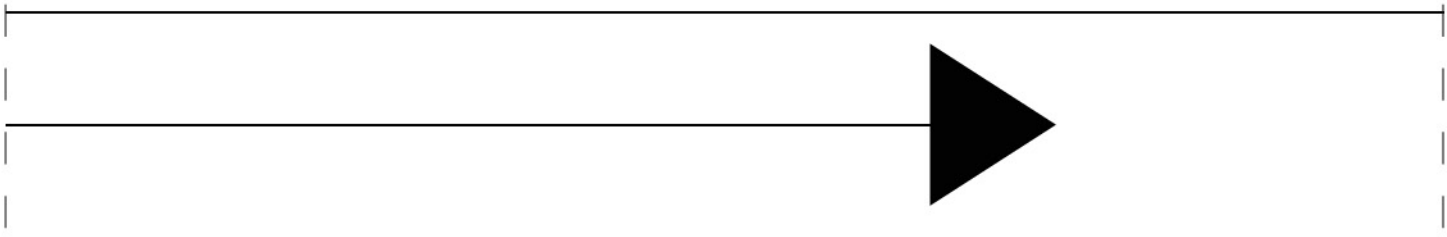


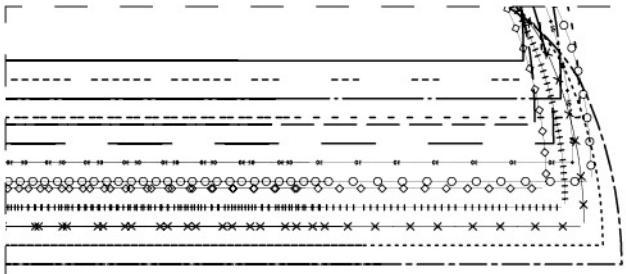


BORNE IN FRANCE

20

gabari
br



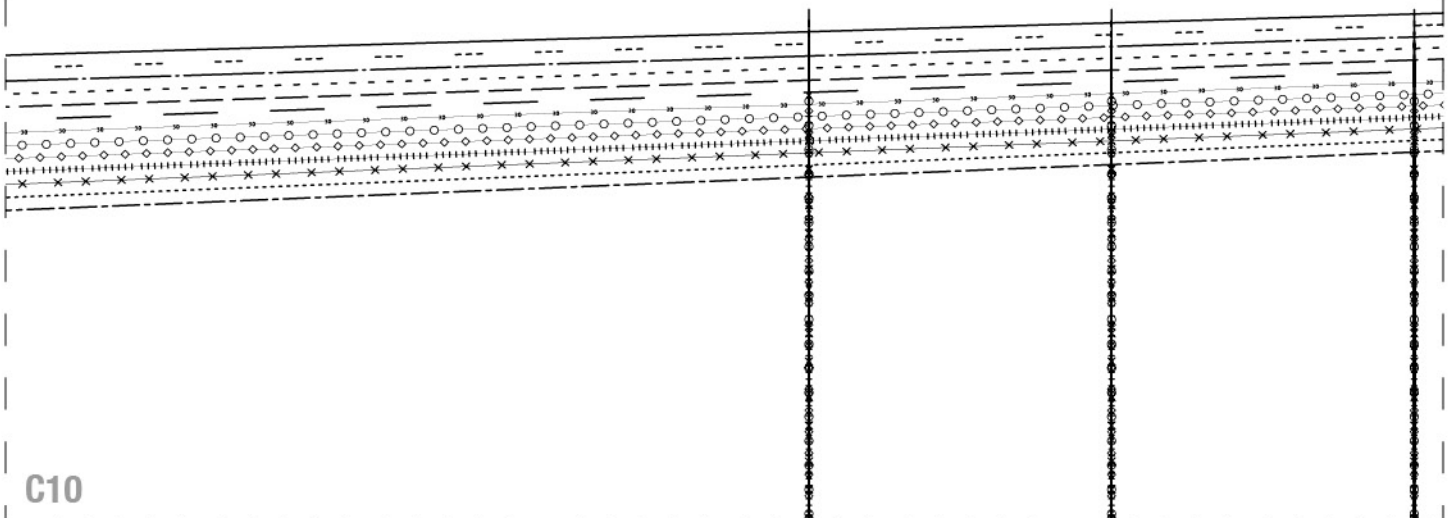


1083

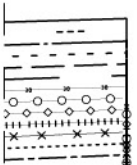
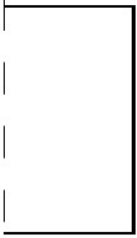
6

12BRU13

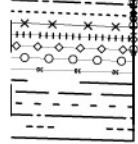
st surpiquer
aguette



C10



C11



D11

PATRON :

1-Braguette 1 fermeture à glissière, ouverture milieu devant de 190 mm.

2-Passants rempliés, surpiqués et plaqués.

3-Ceinture coulissée, assemblée en surpiqûre tout le tour à 2mm. Finition bord intérieur biais. Surpiqûre décorative à 20 mm du bord haut. Fermeture milieu devant avec un bouton de 17 mm.

4- Poches cavalières : découpe assemblée avec contre poche, surpiquées à 2 mm et 7 mm. Assemblage du fond de poche avec contre poche. Renfort des angles hauts avec rivets de 10 mm.

5-Poche à gousset : haut de poche ourlé en surpiqûre double à 3 mm et 7 mm. Surfilée, plaquée en surpiqûre double à 1 mm et 7 mm. Renfort des angles hauts avec rivets de 10 mm.

6-Bas du pantalon : ourlé à 10 mm.

7-Entrejambe et cotés intérieurs assemblés et rempliés en surpiqûre double à 1 mm et 7 mm.

8-Côtés extérieurs assemblés à 12 mm, surfilés coutures ouvertes Surpiqûre à 1 mm sur 200 mm (taillebassin) coutures couchées vers le dos.

9-Poches plaquées : Haut des poches ourlé en surpiqûre double à 3 mm et 7 mm. Les poches sont plaquées en surpiqûre double à 1 mm et 7 mm.

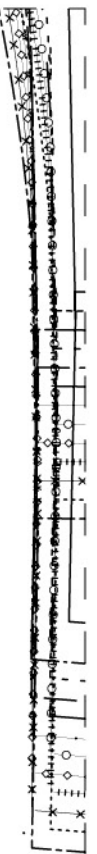


Patron jeans femme 202BRU13 de 1083 est mis à disposition selon les termes de Commons Attribution 3.0 France.

Les autorisations au-delà du champ de cette licence peuvent être obtenues à co

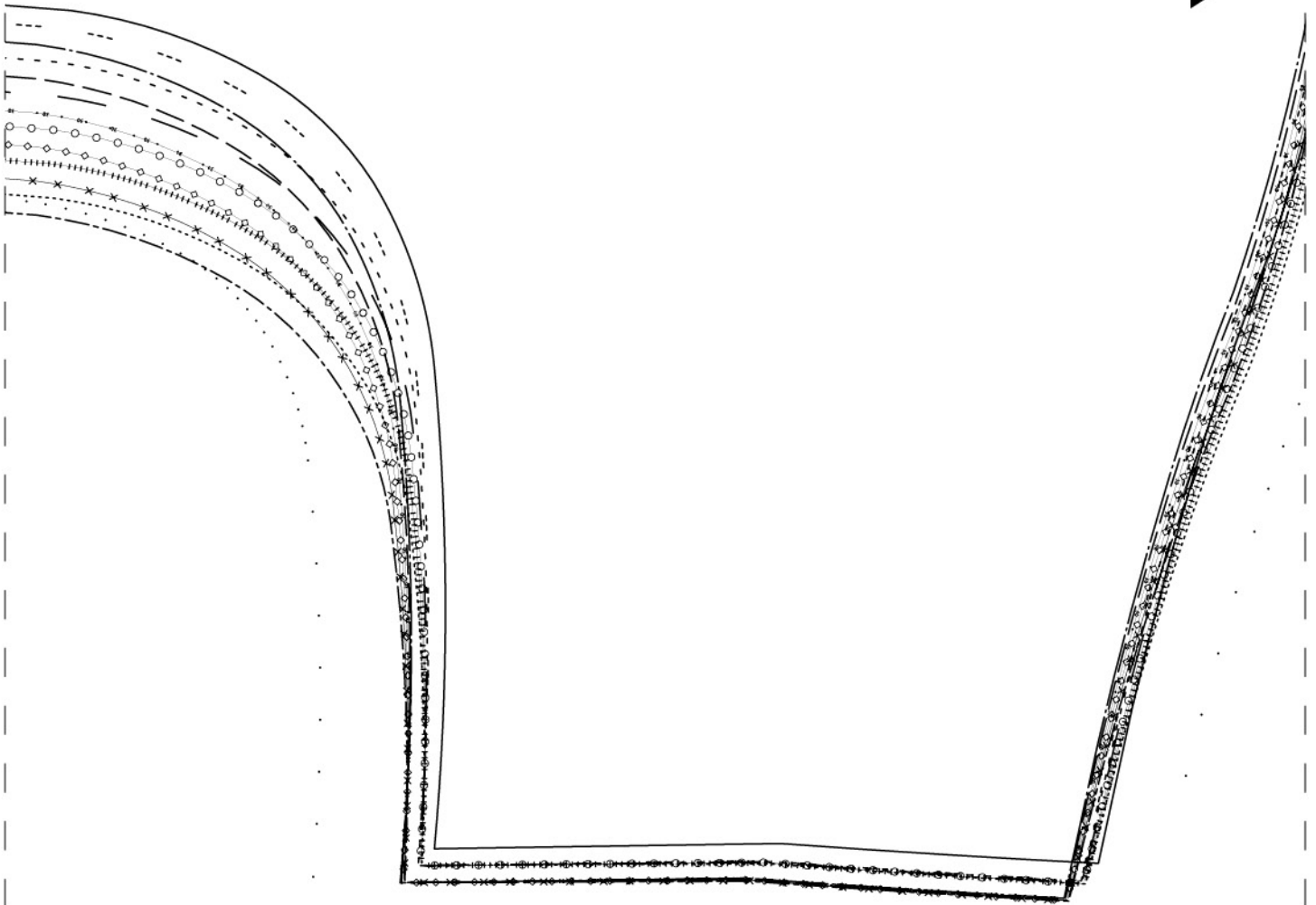
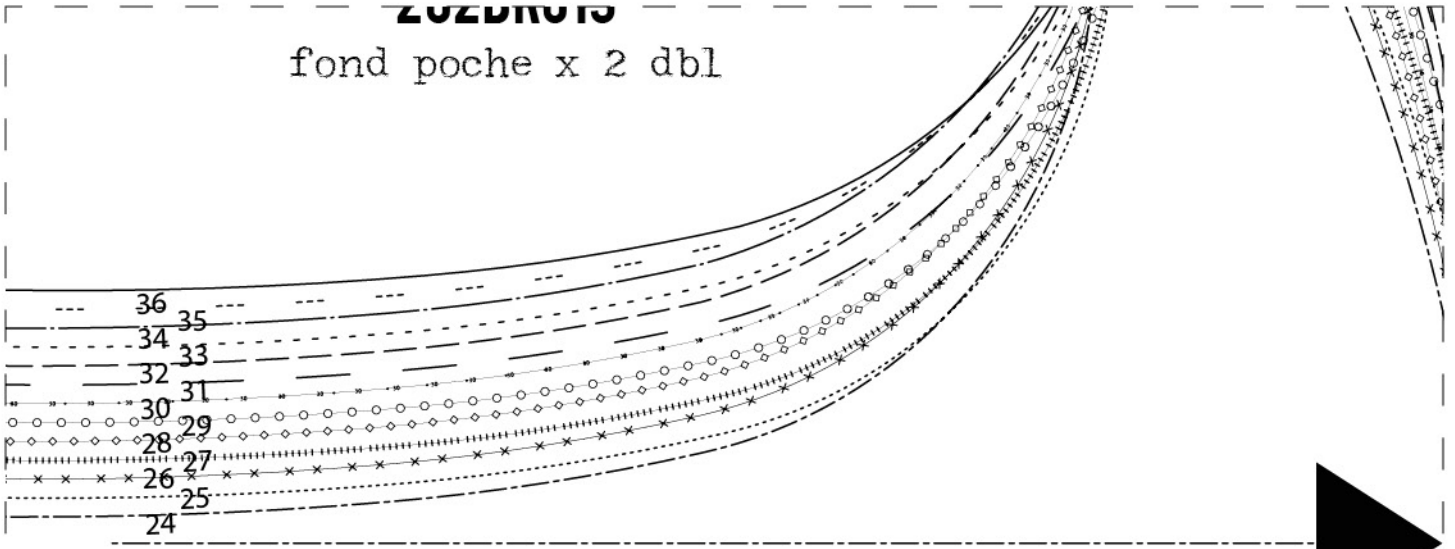
la licence Creative

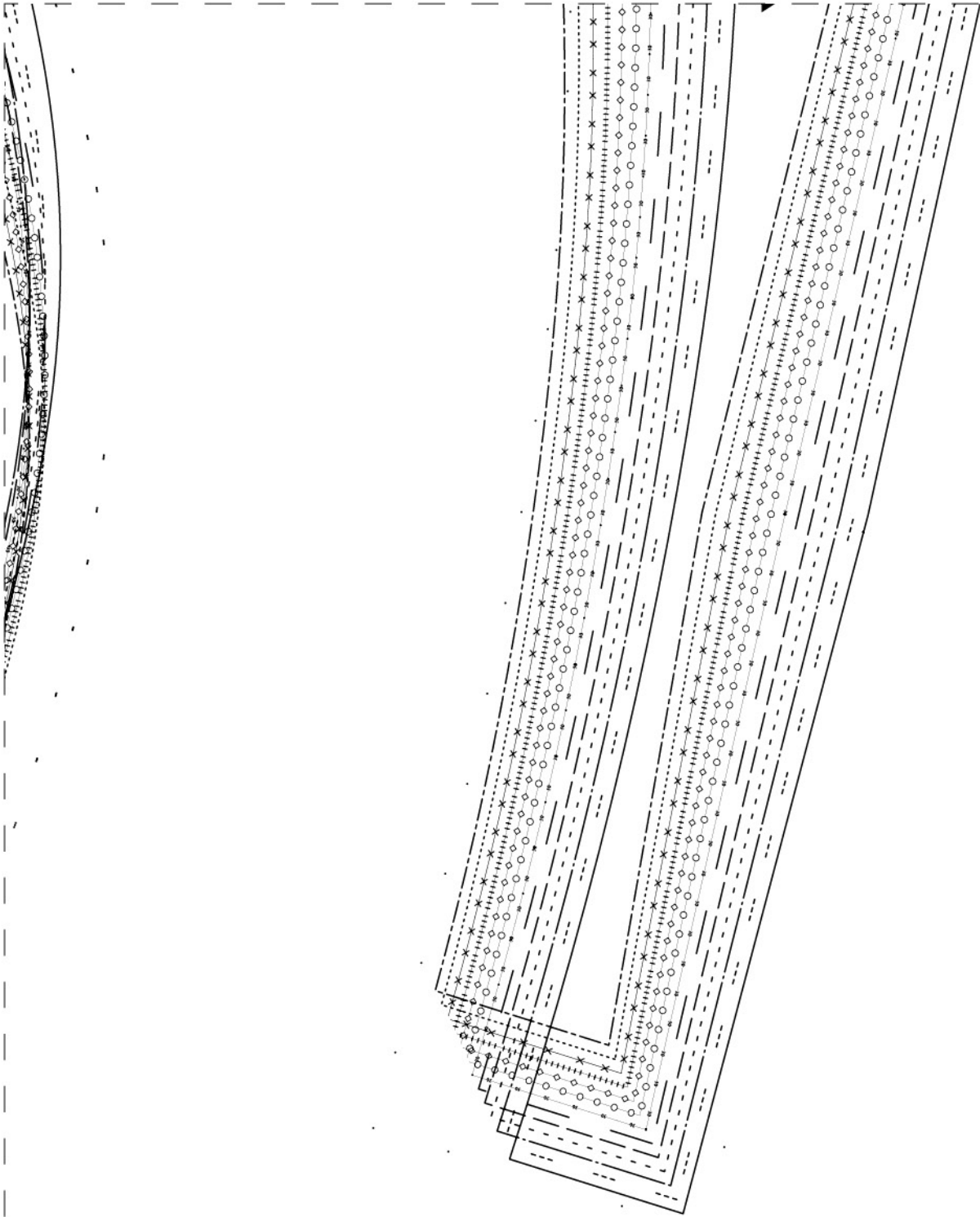
ntact@1083.fr.

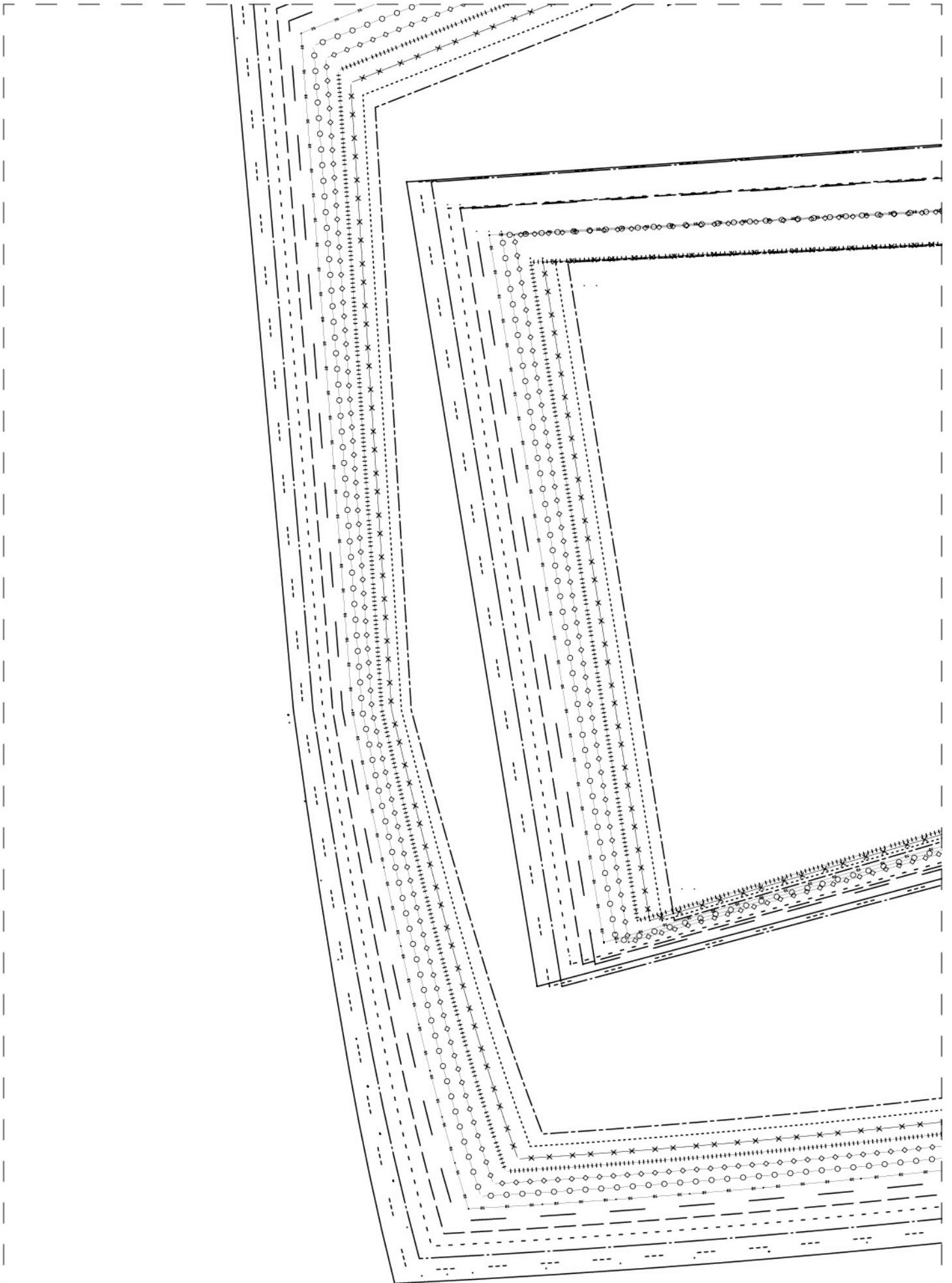


ZUZDROU

fond poche x 2 dbl

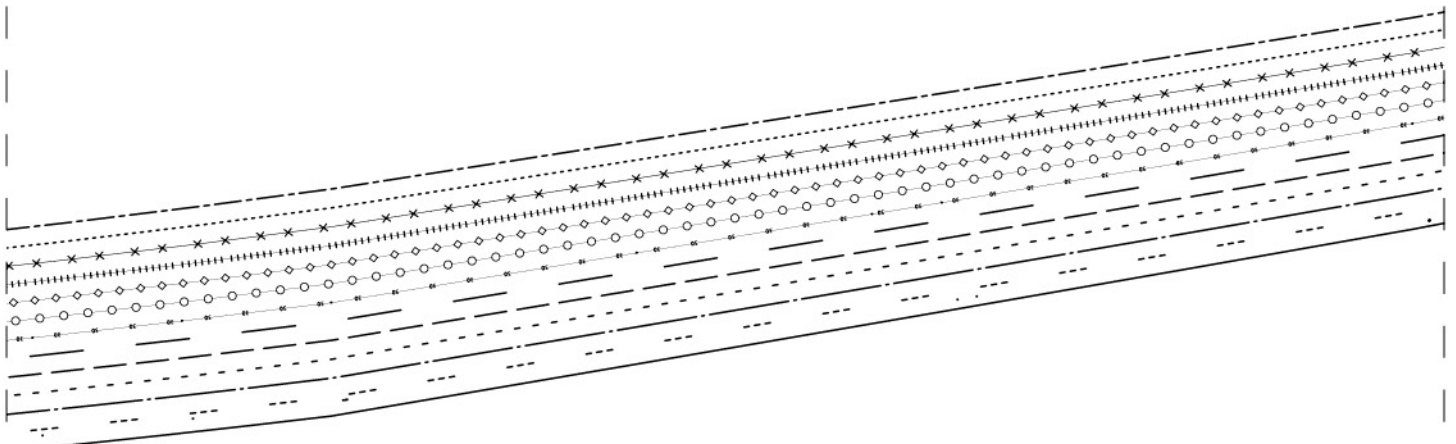
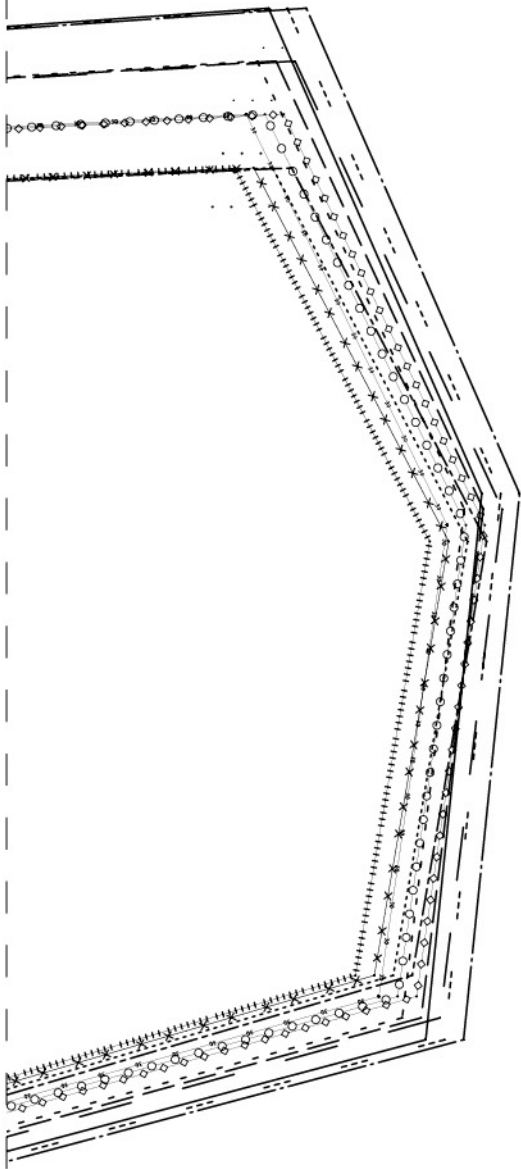




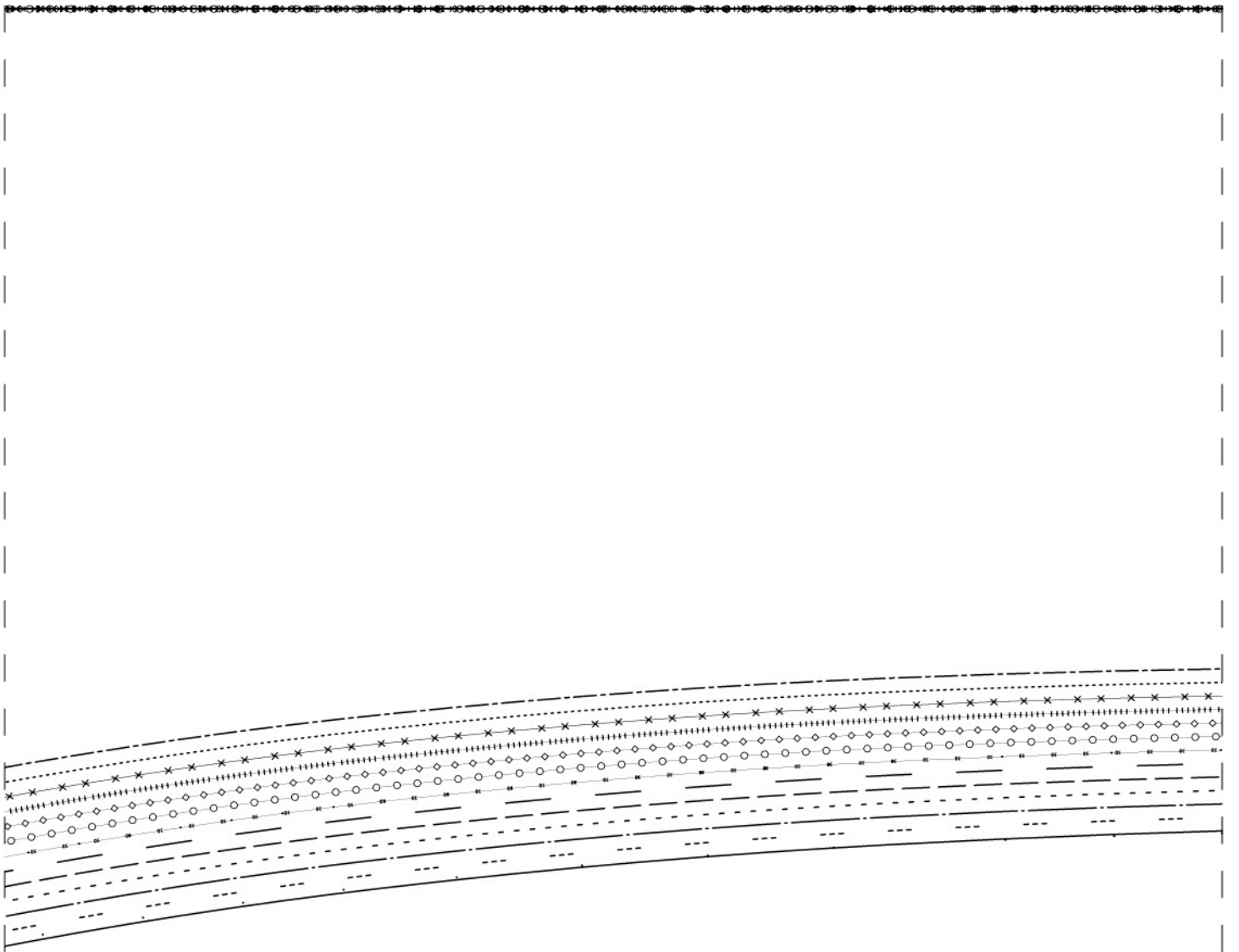


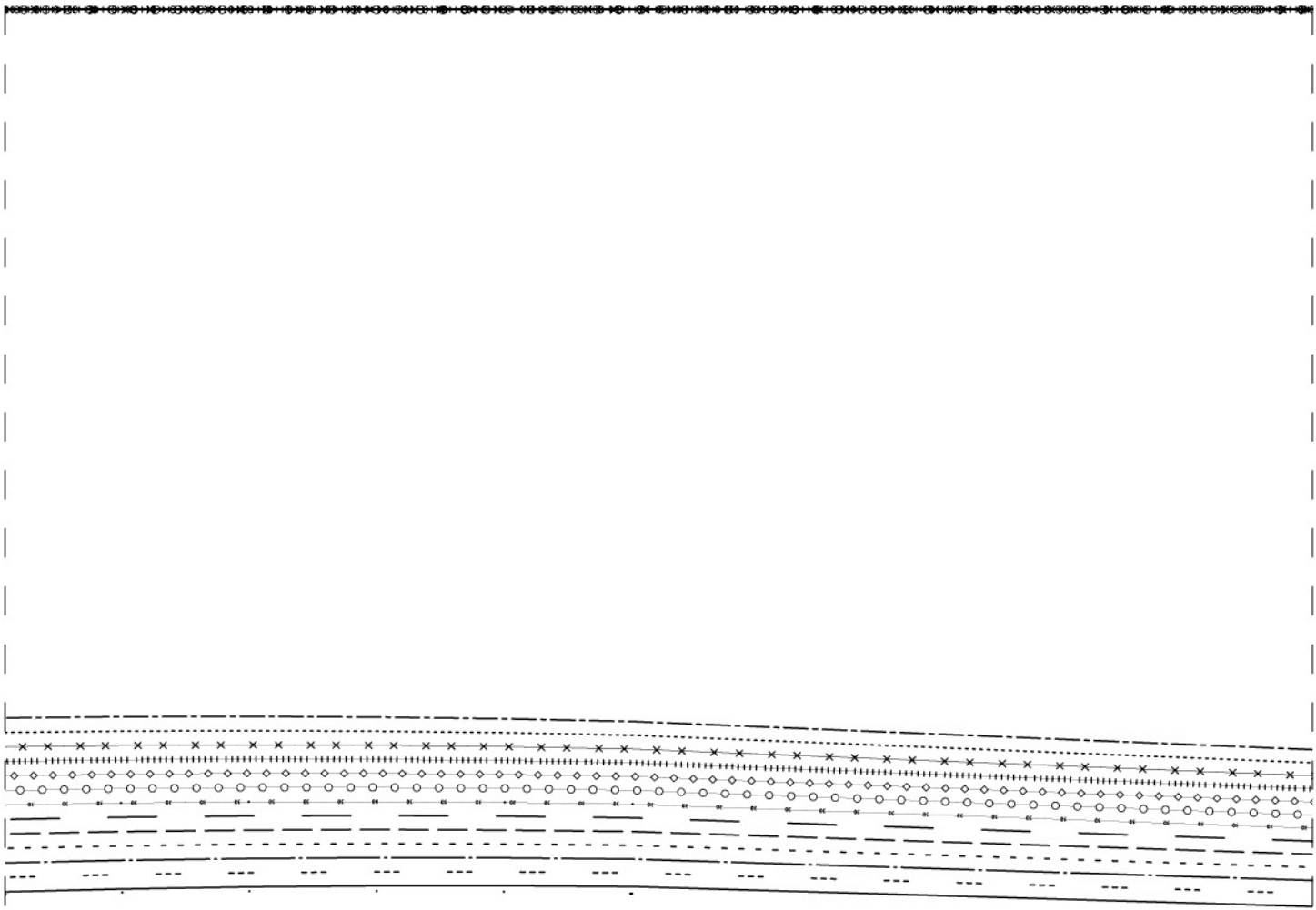
201BRU13

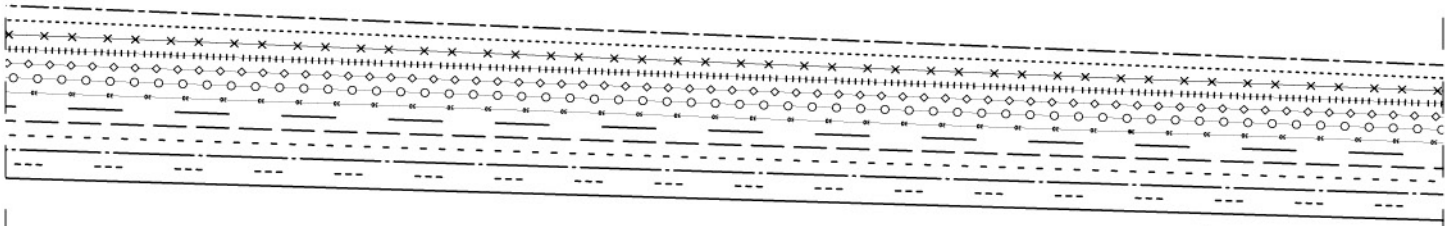
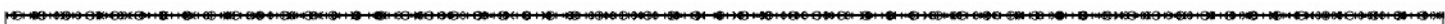
dos x 2

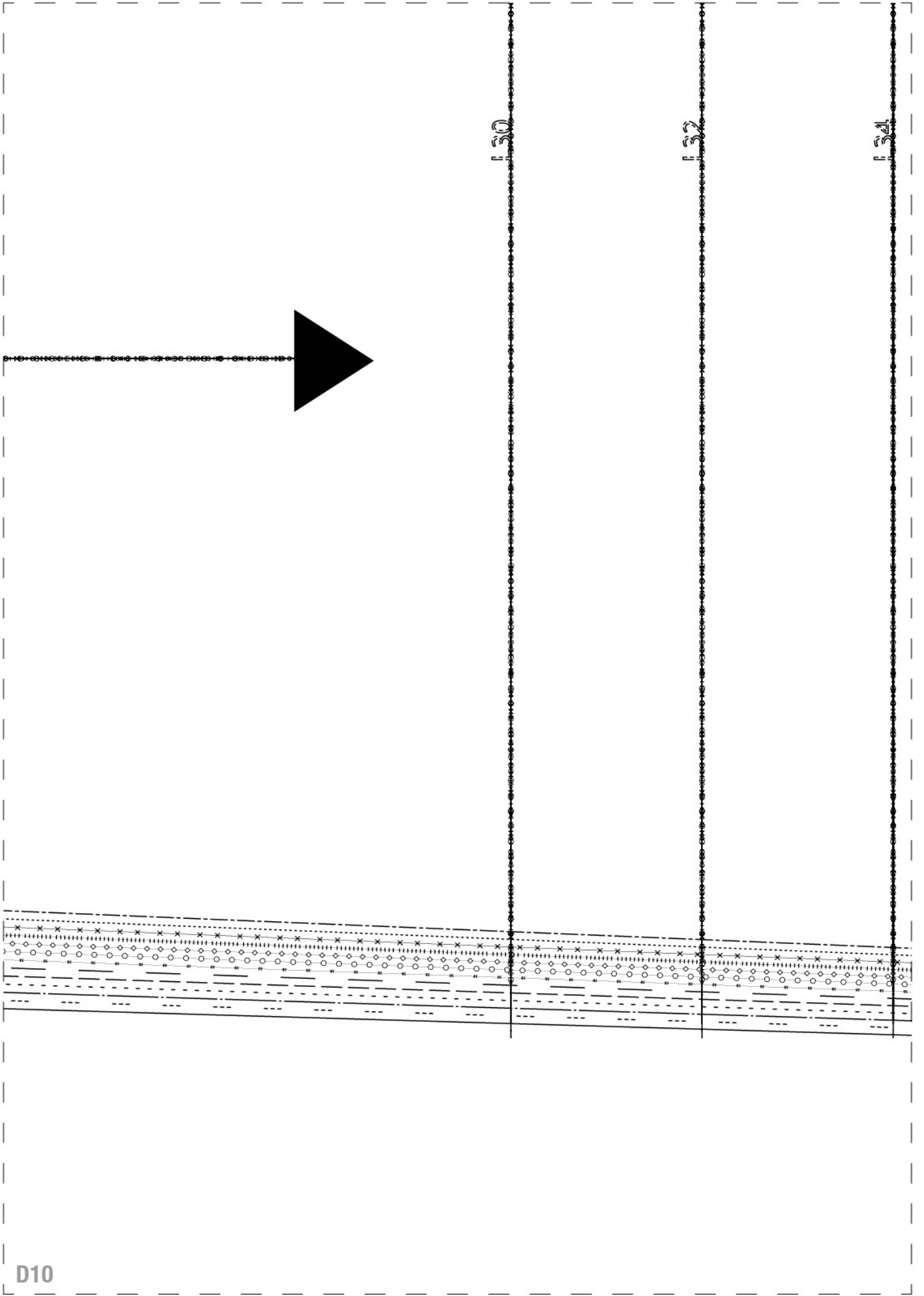


D6









D10