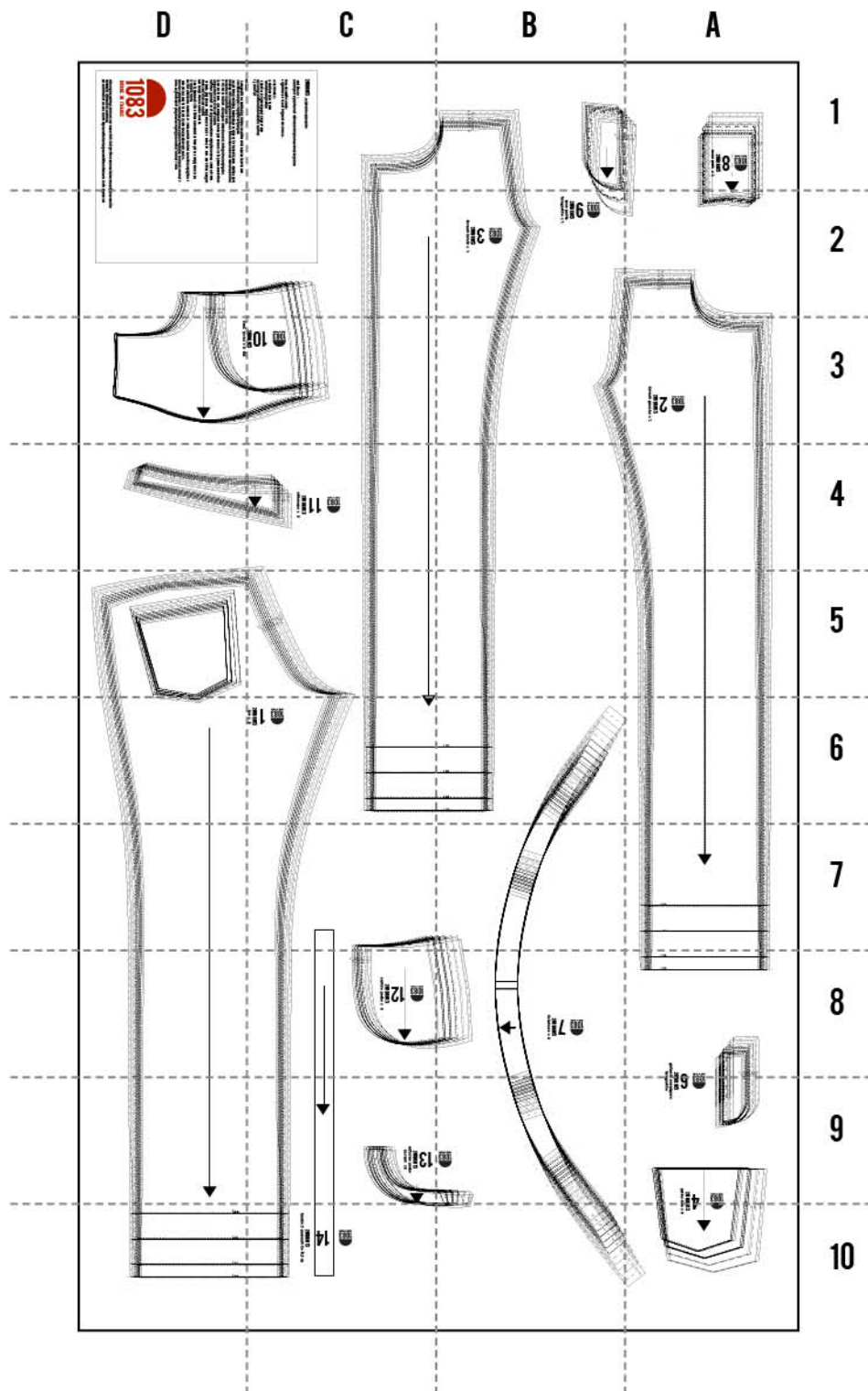


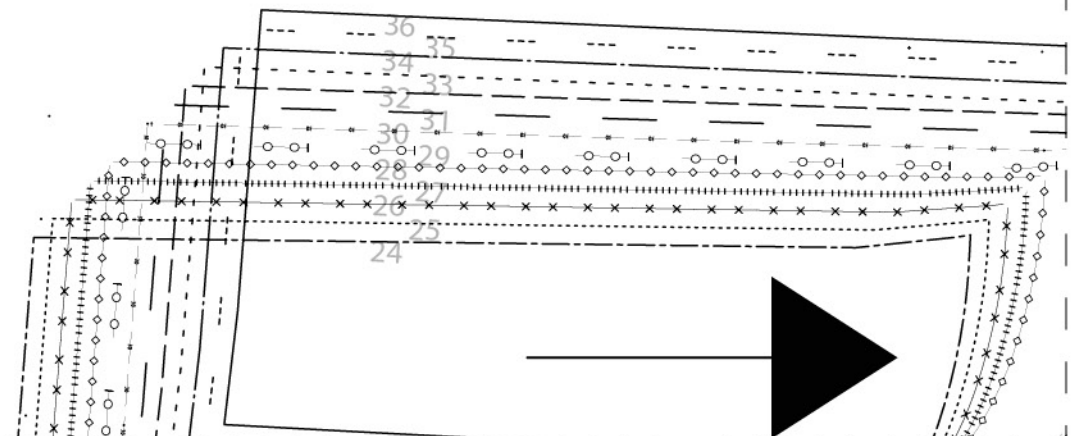
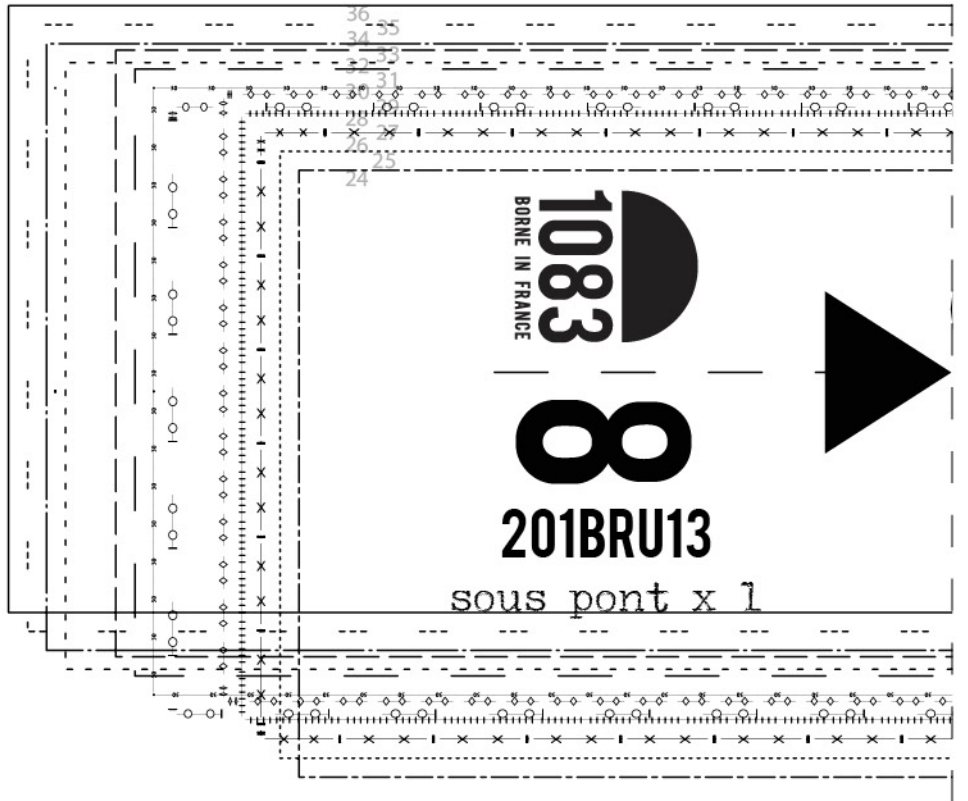
**ATTENTION** : Ce document a été réalisé avec des marges conséquentes pour vous permettre de l'imprimer correctement sur n'importe quelle imprimante A4. Dans les paramètres d'impression : imprimez à la taille réelle. Vous ne devez pas ajuster au format d'impression.

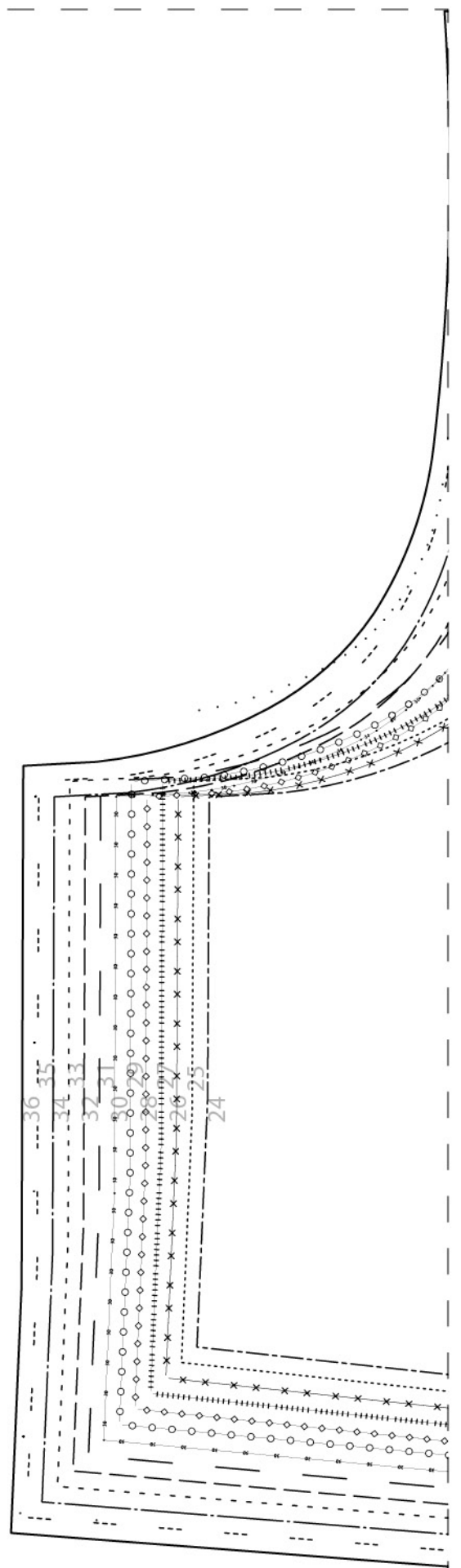


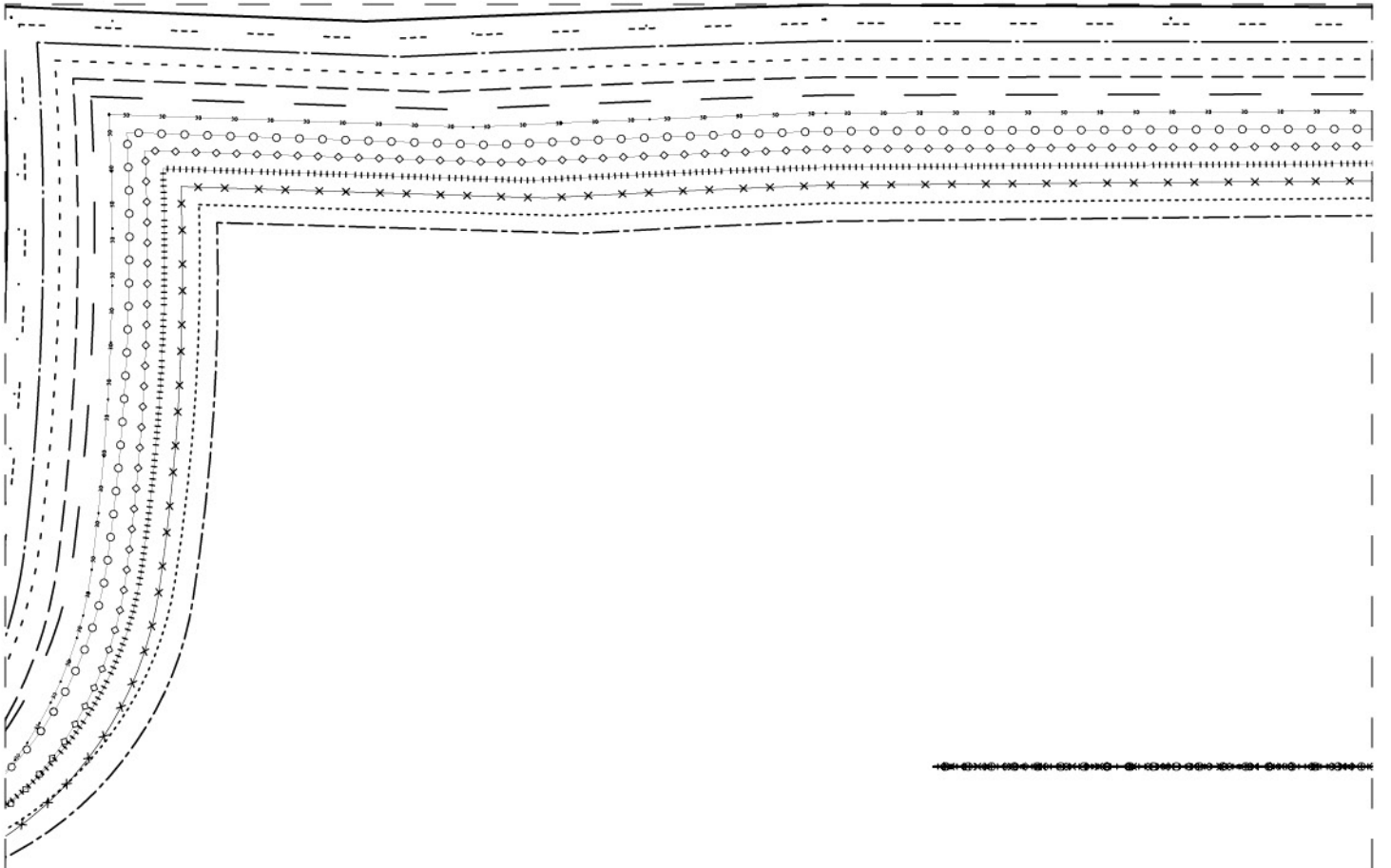
## PATRON JEANS 201 FEMME DROIT



Patron jeans femme 202BRU13 de 1083 est mis à disposition selon les termes de la licence Creative Commons Attribution 3.0 France. Les autorisations au-delà du champ de cette licence peuvent être obtenues à [contact@1083.fr](mailto:contact@1083.fr).





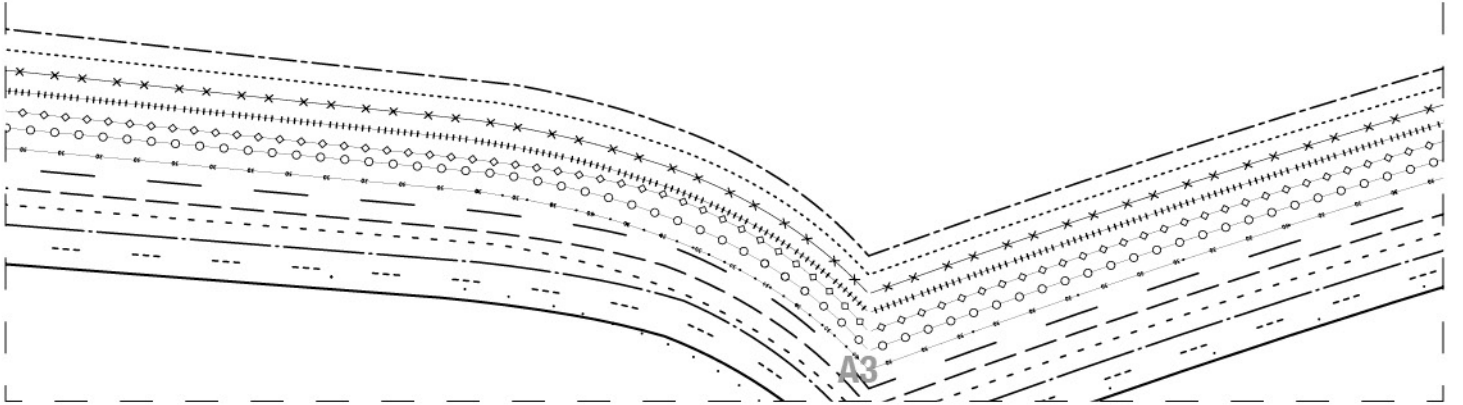


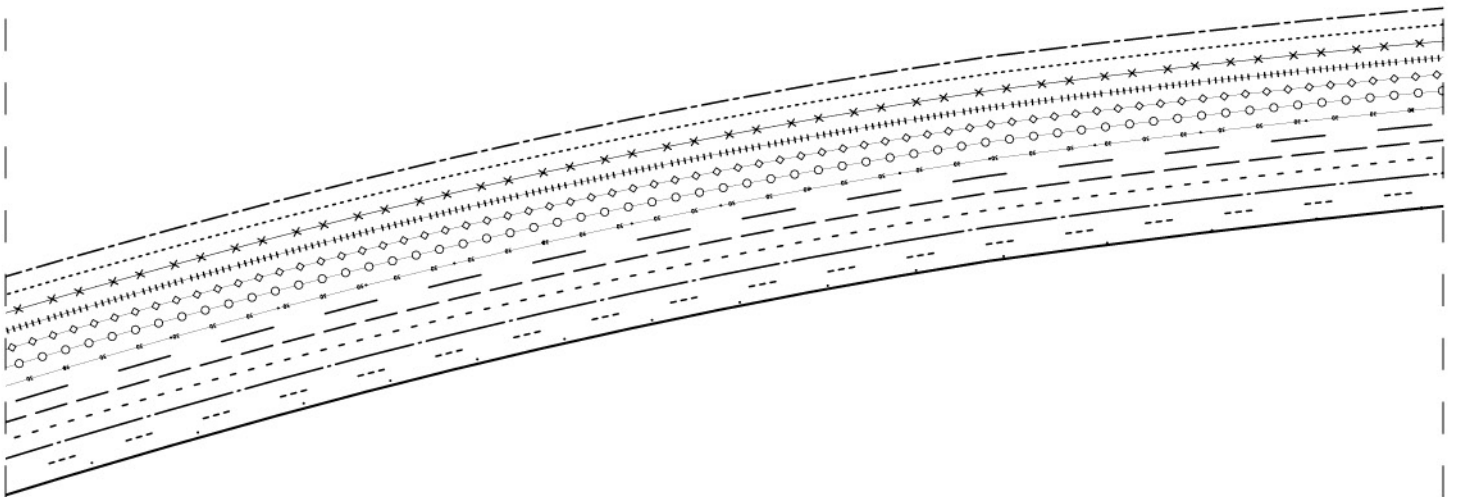
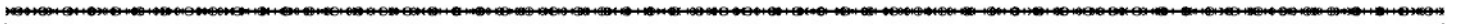
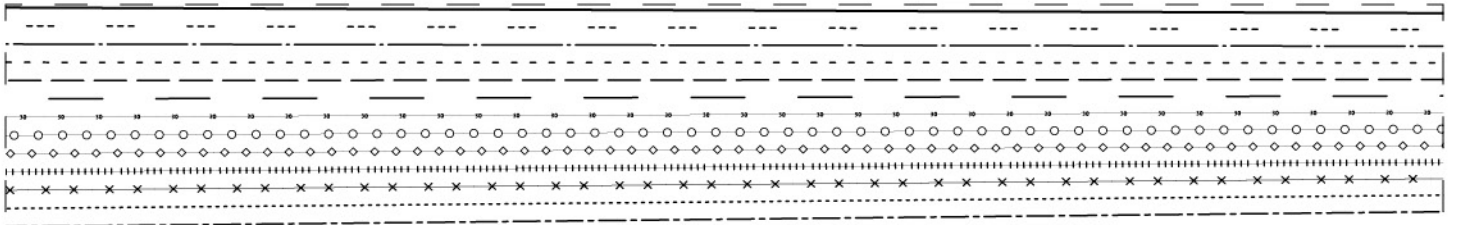
BORNE IN FRANCE  
**1083**

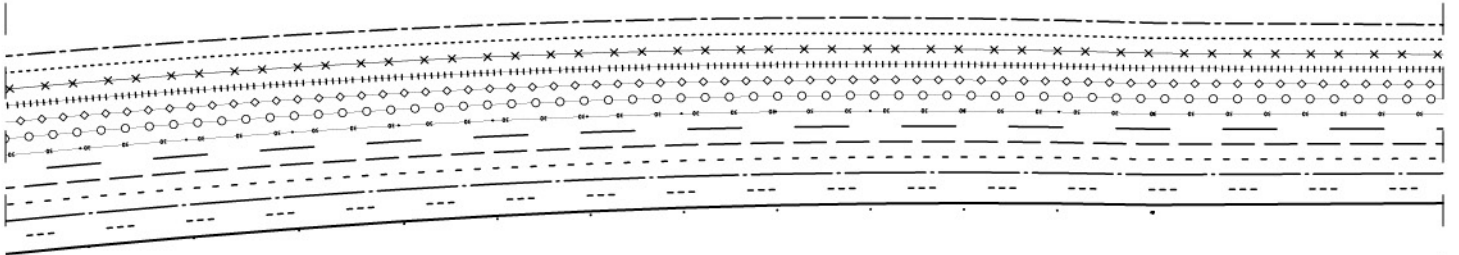
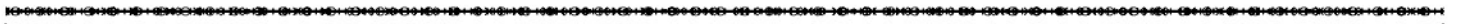
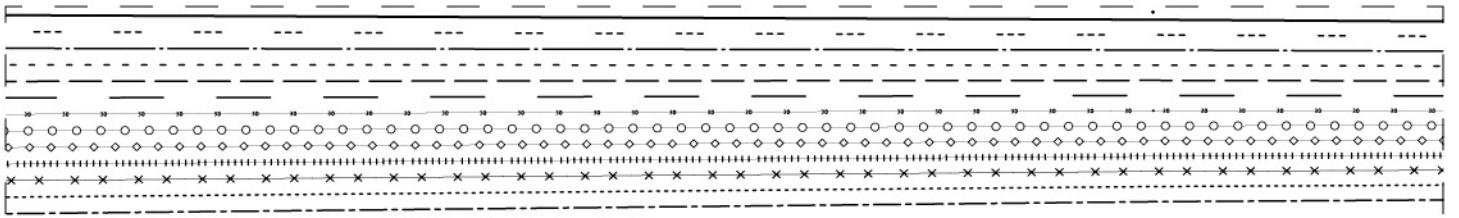
**2**

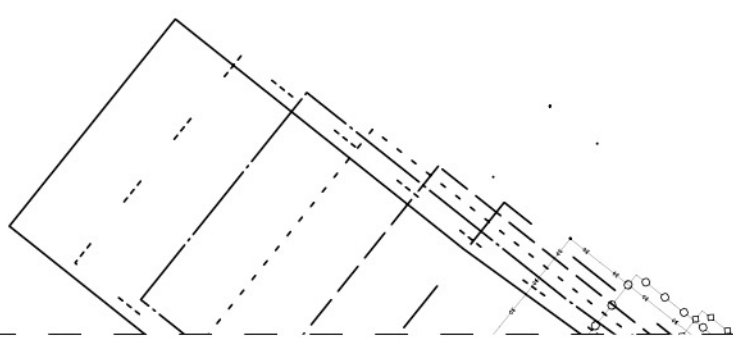
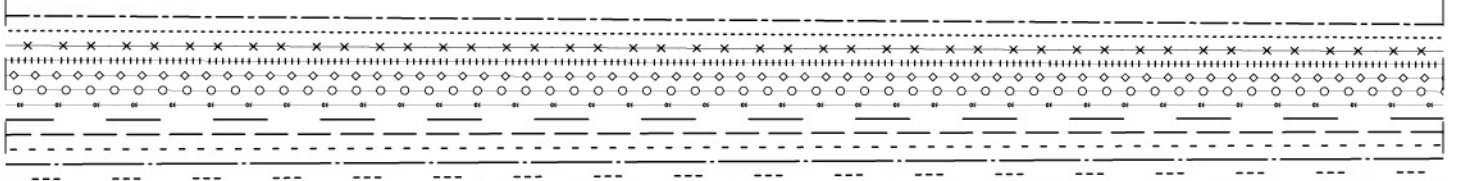
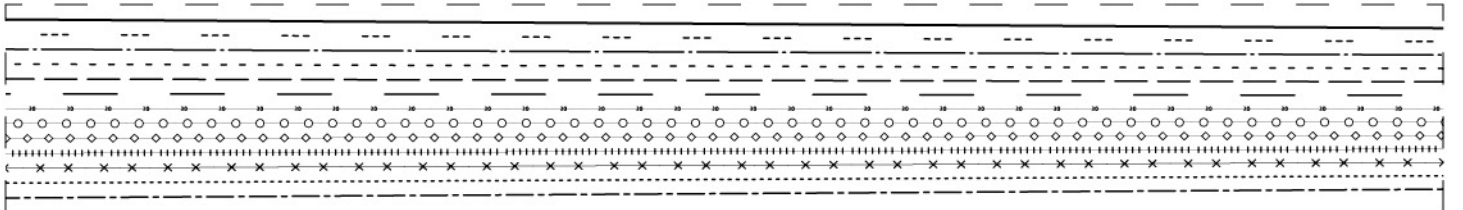
**201BRU13**

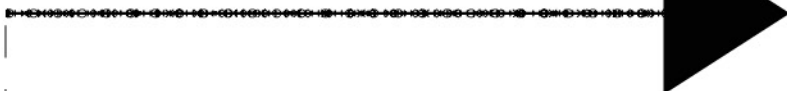
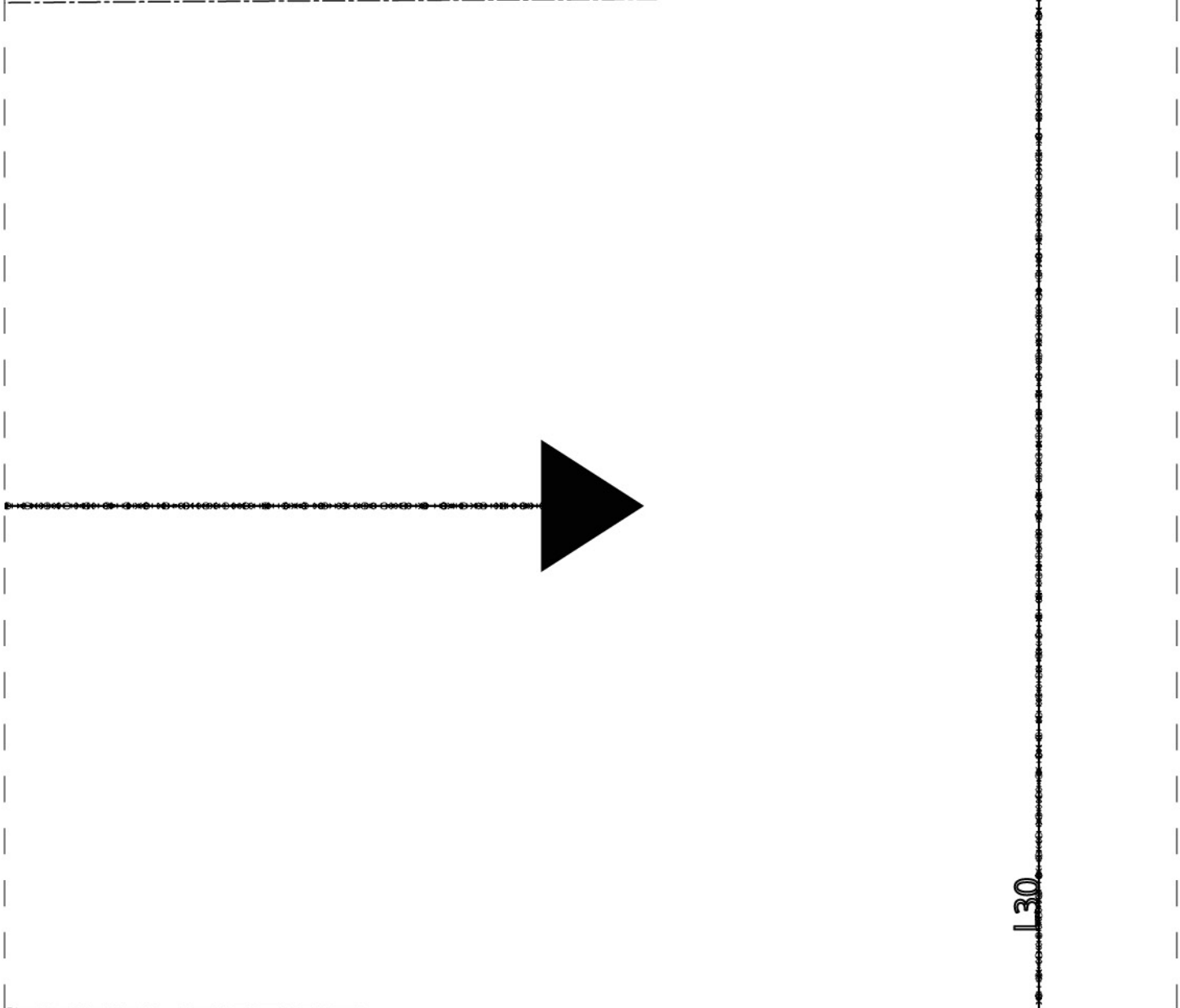
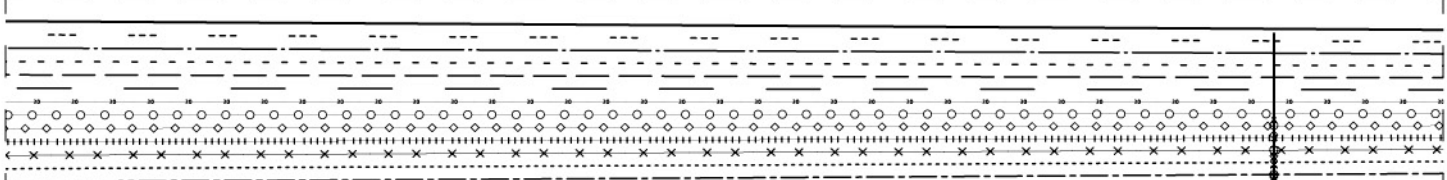
devant gauche x 1



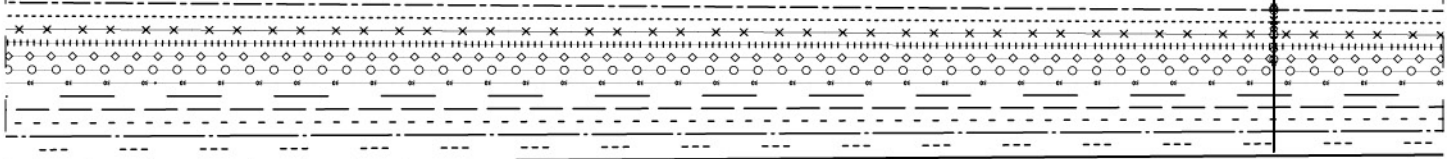




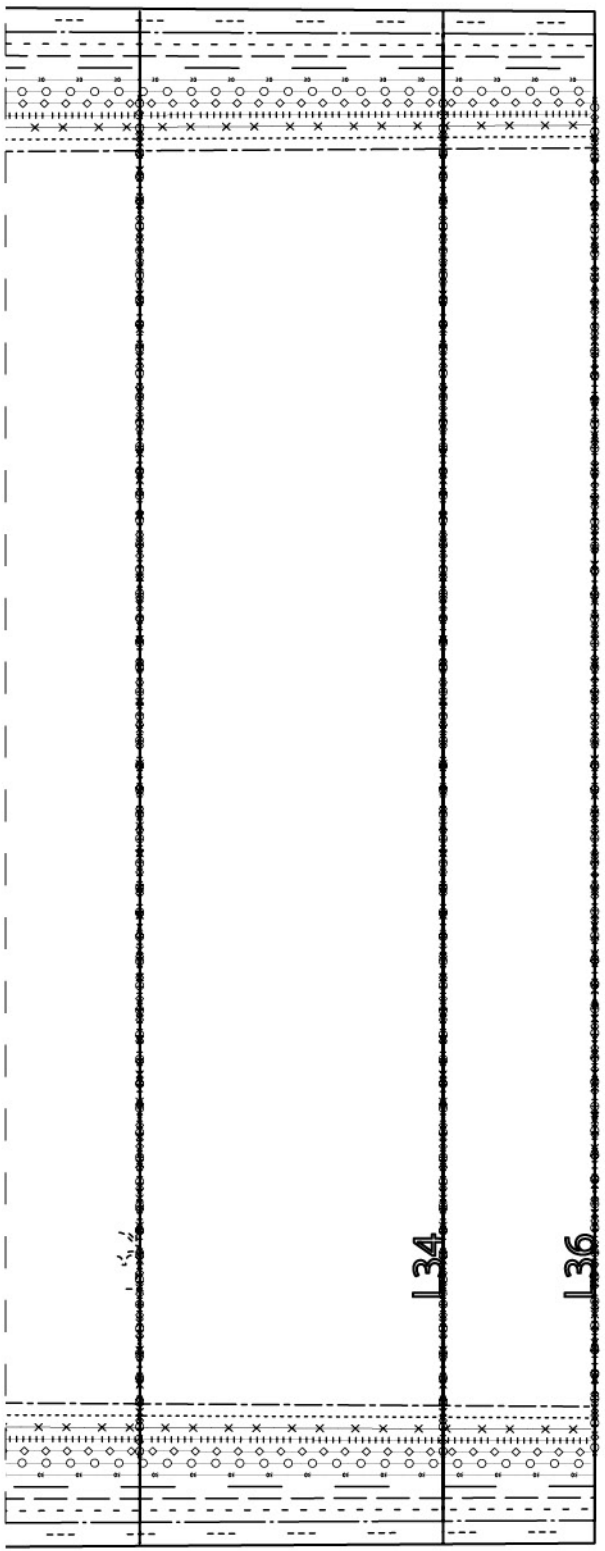




130





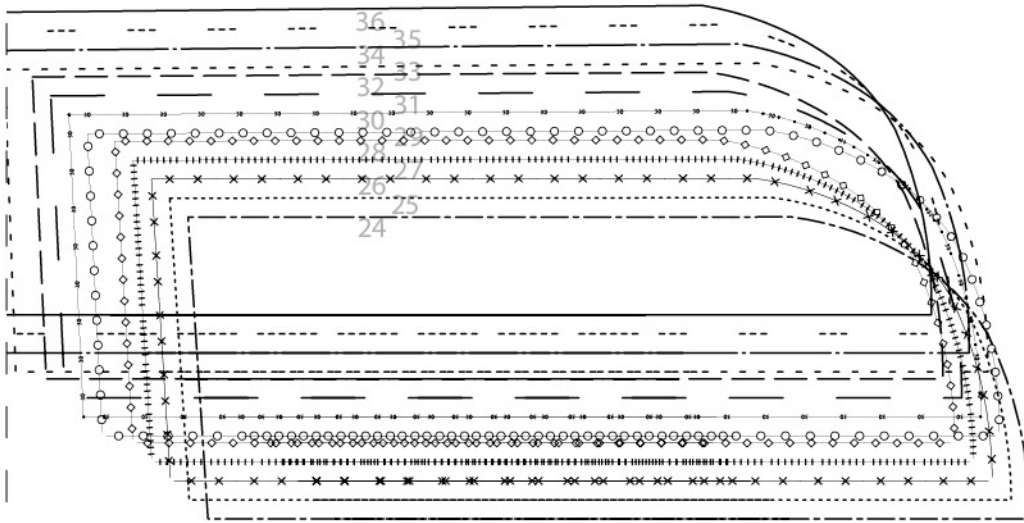


1 1/2

134

136



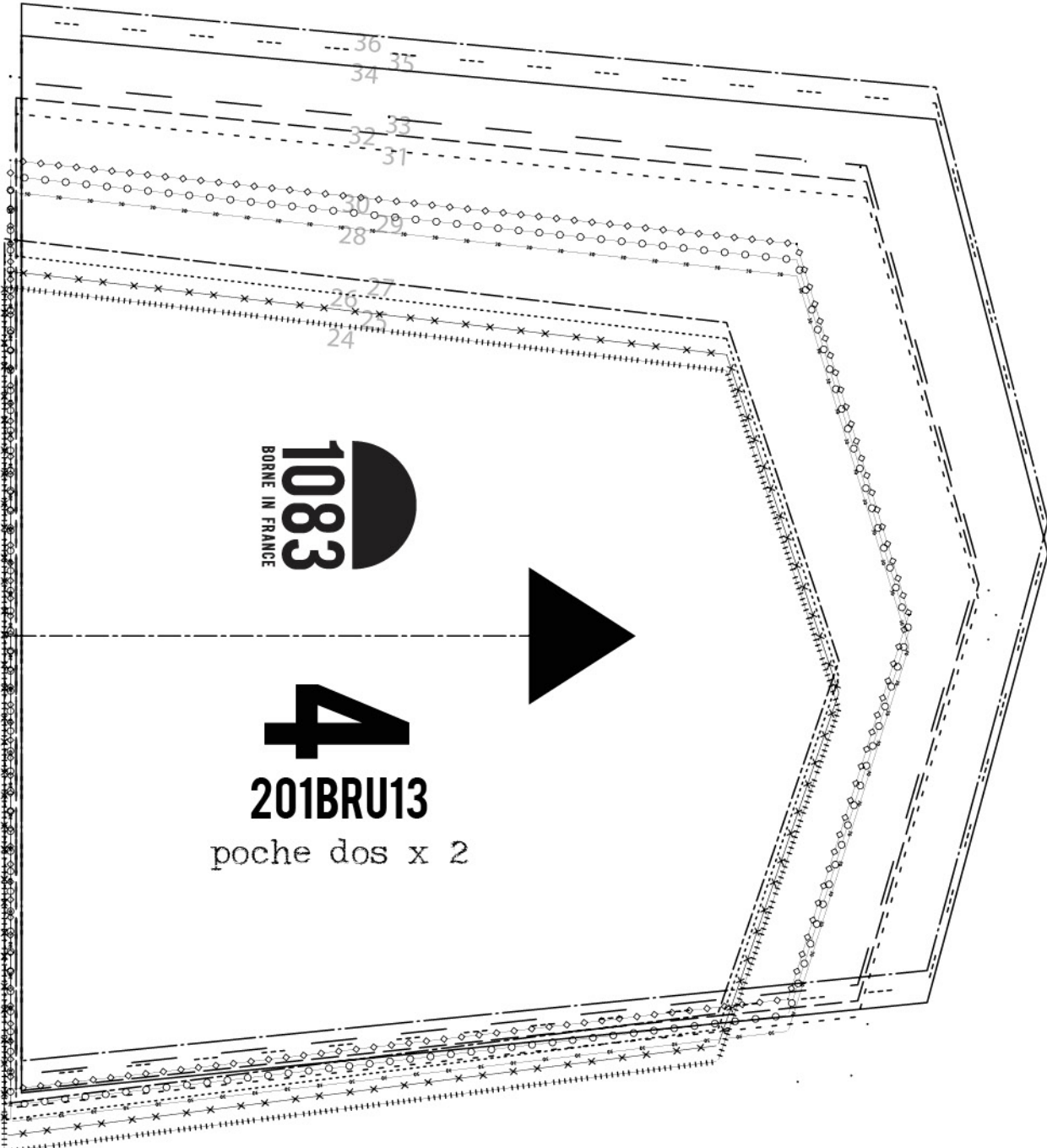


**1083**  
BORNE IN FRANCE

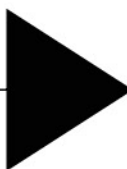
**6**

**201BRU13**

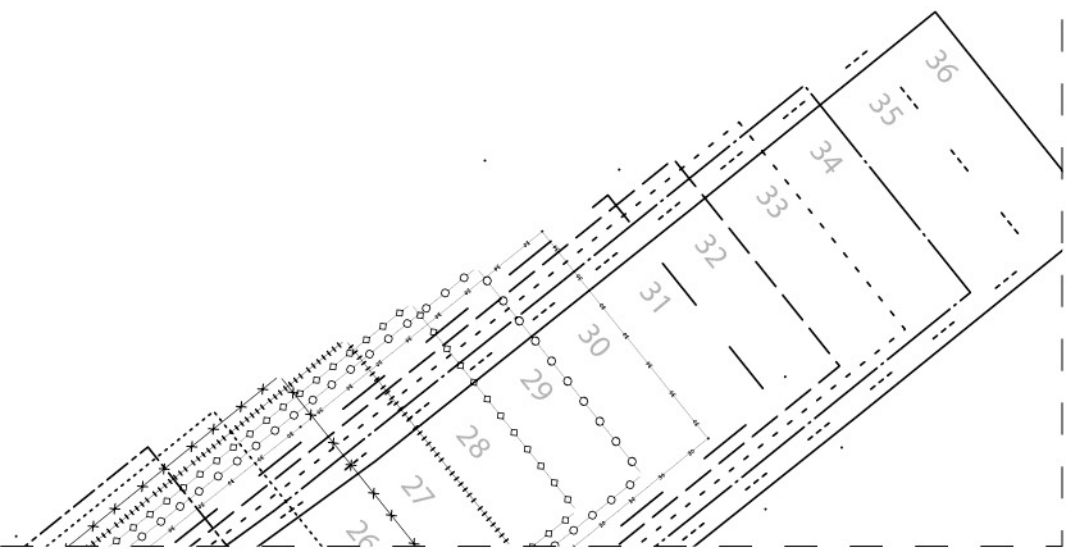
gabarit surpiqure  
braguette

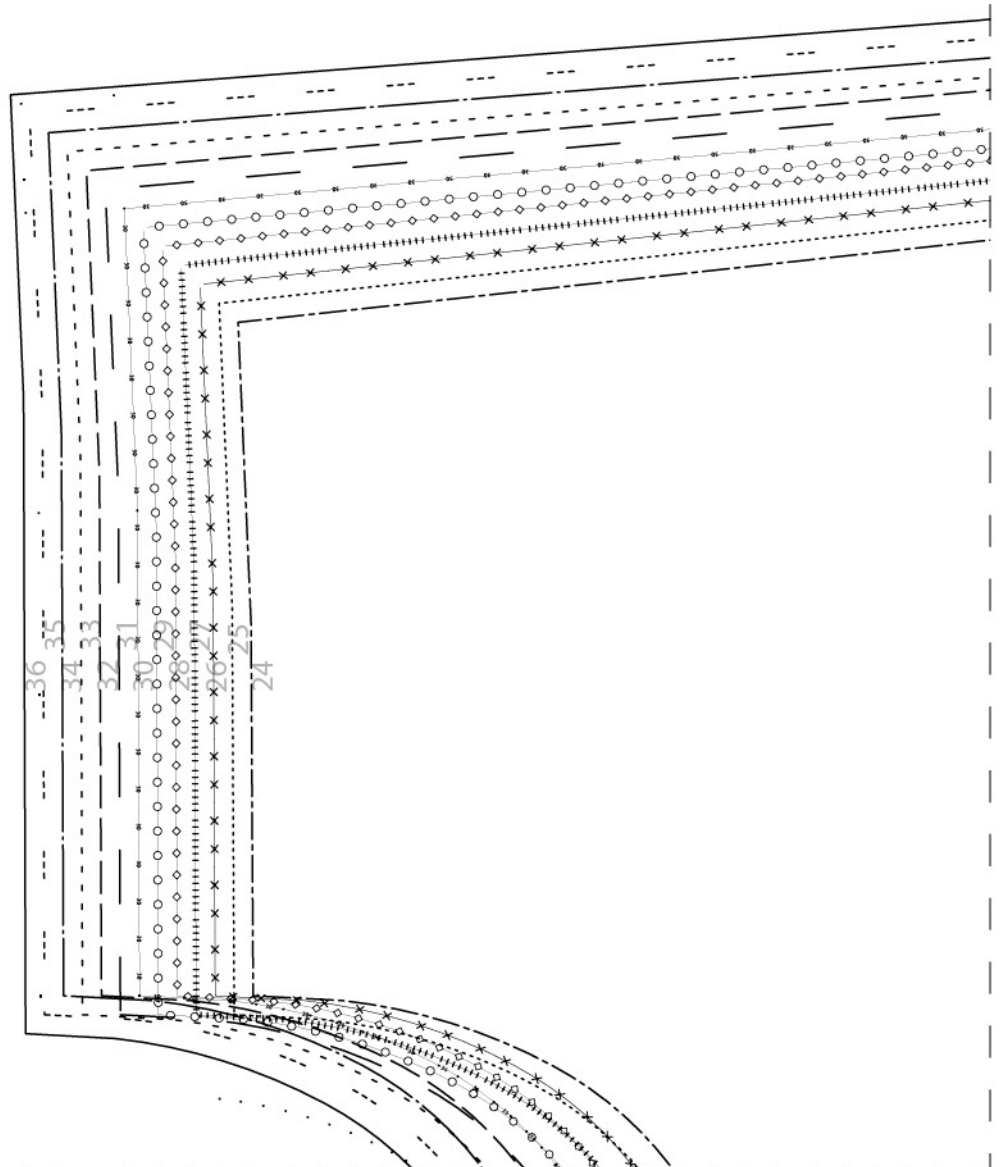
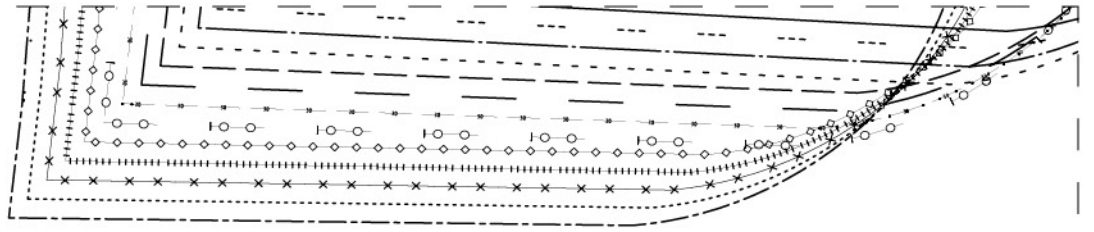


**1083**  
BORNE IN FRANCE



**4**  
**201BRU13**  
poche dos x 2



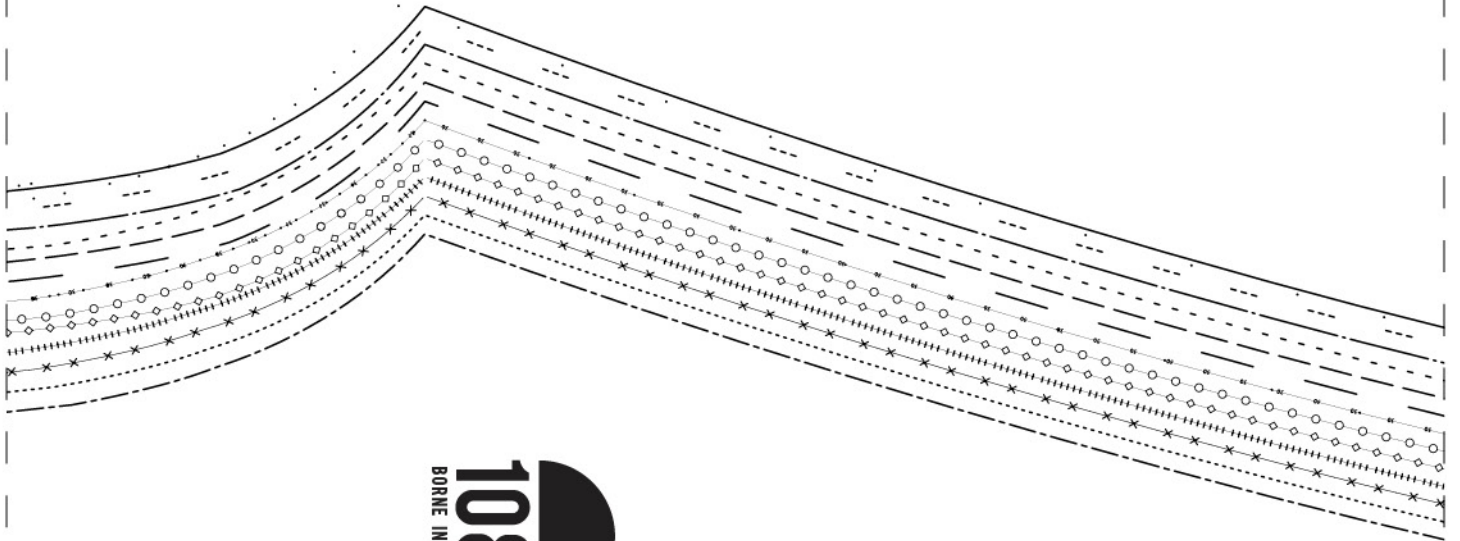


**1083**  
BORNE IN FRANCE

**9**

**201BRU13**

sous patte  
braguette x 1

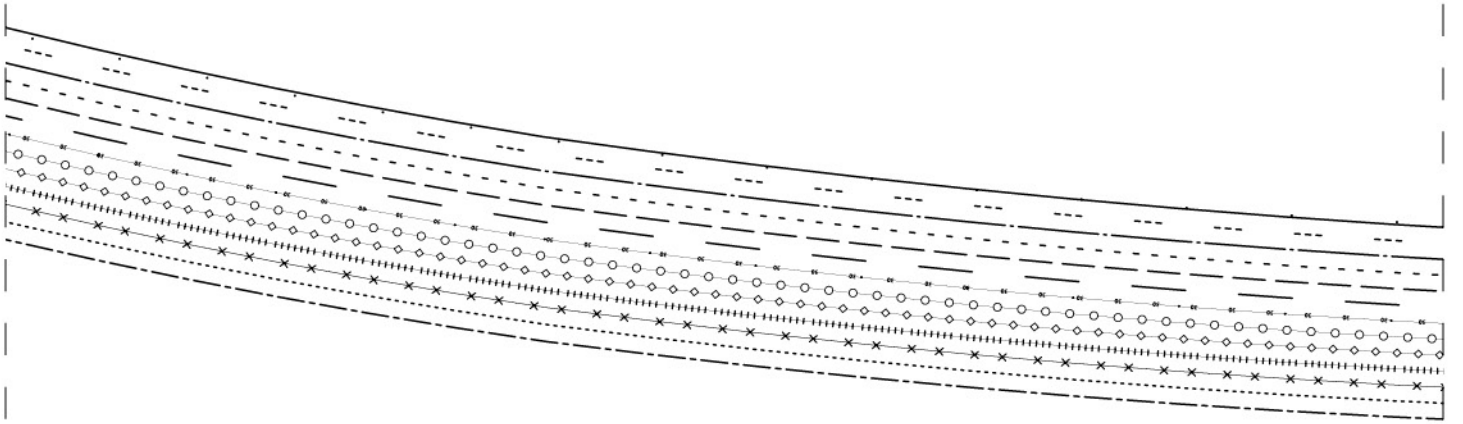


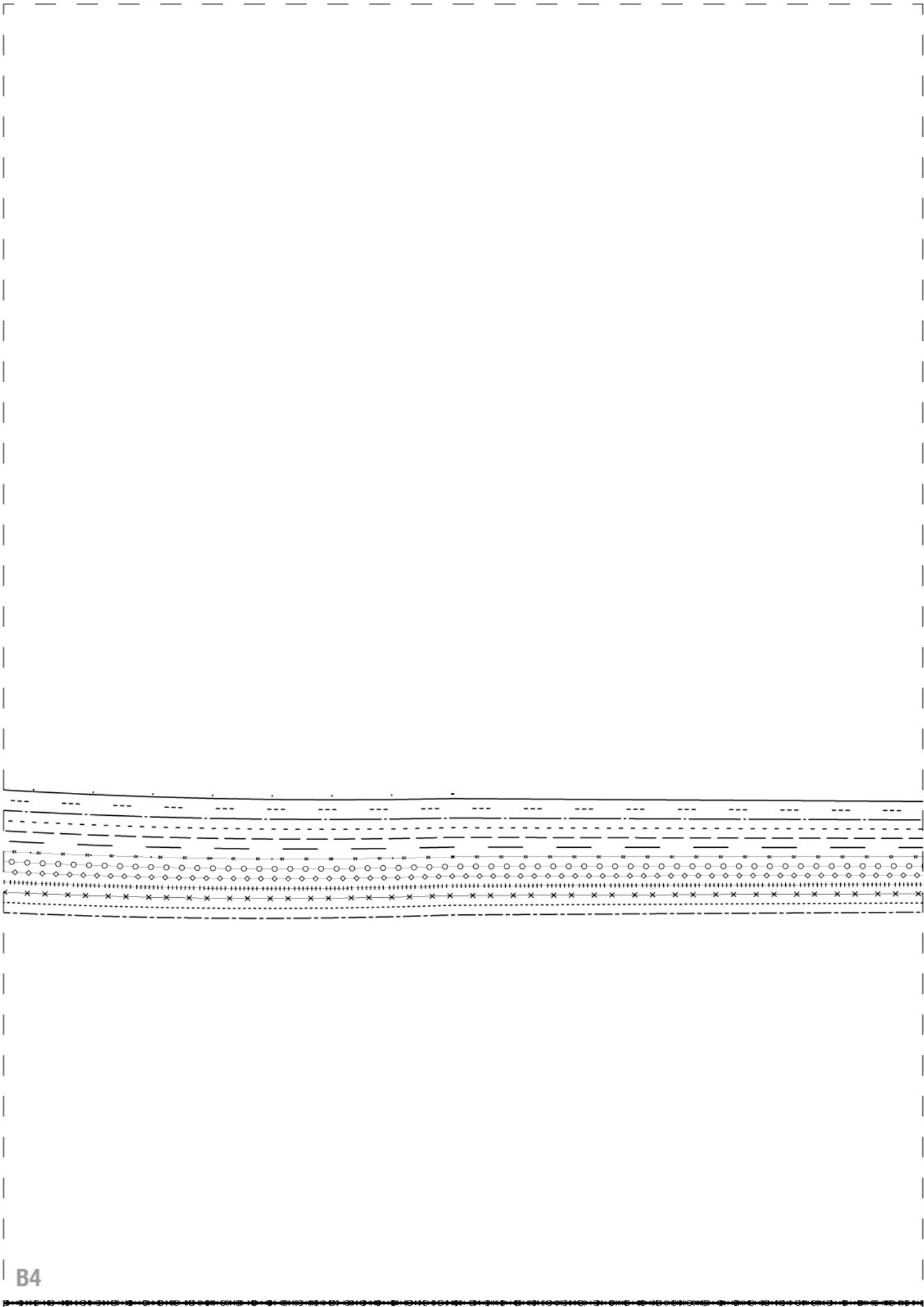
**1083**  
BORNE IN FRANCE

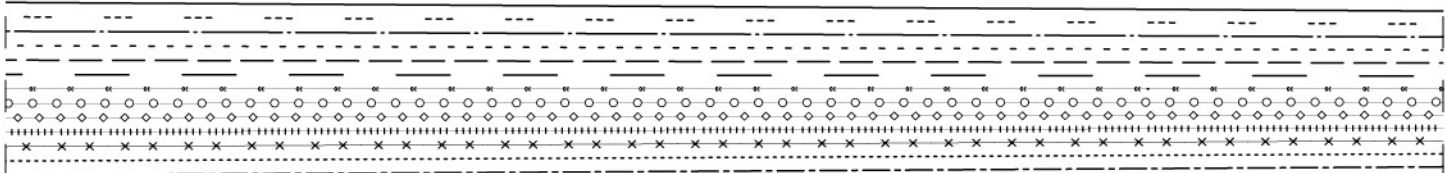
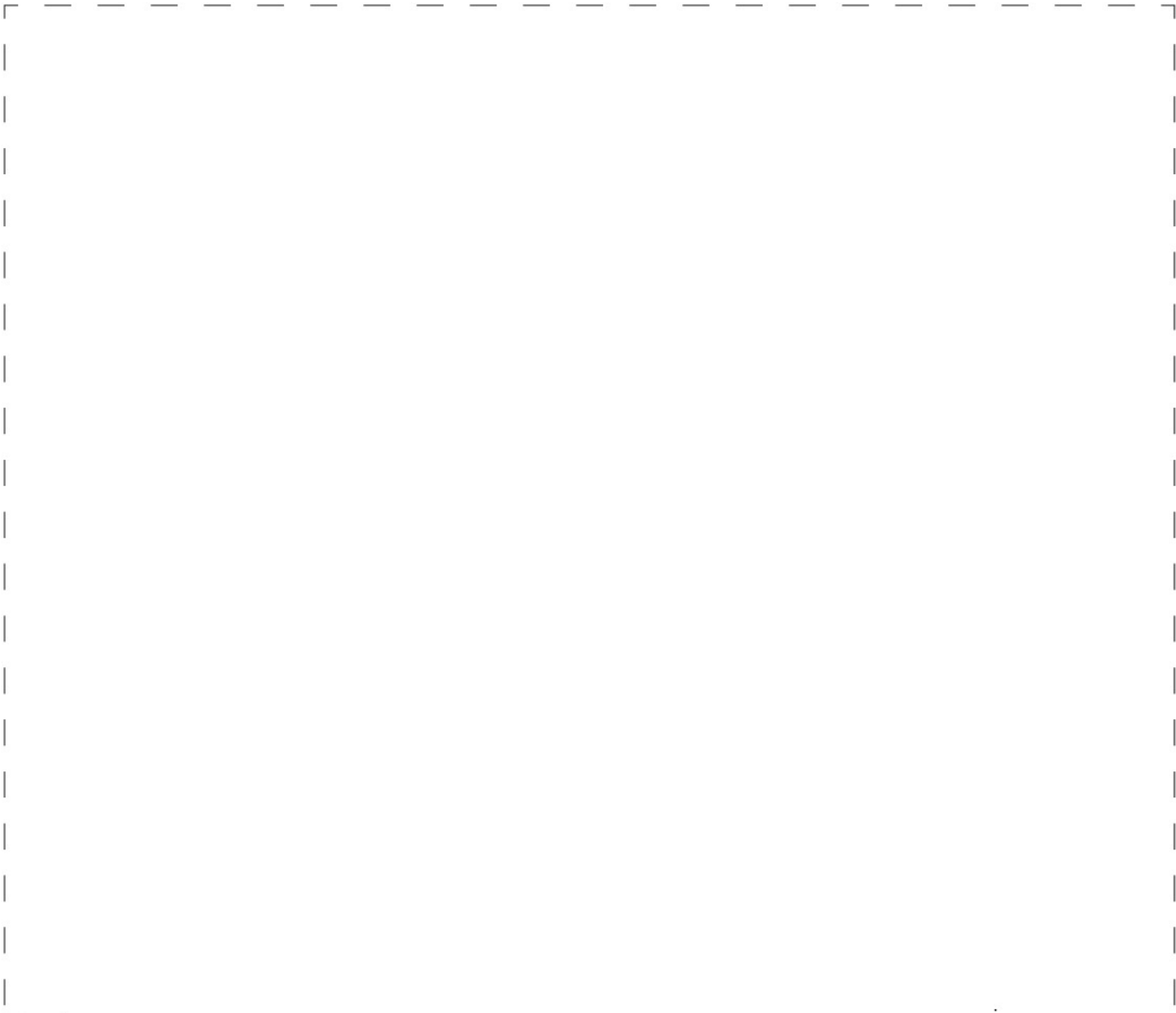
**3**

**201BRU13**

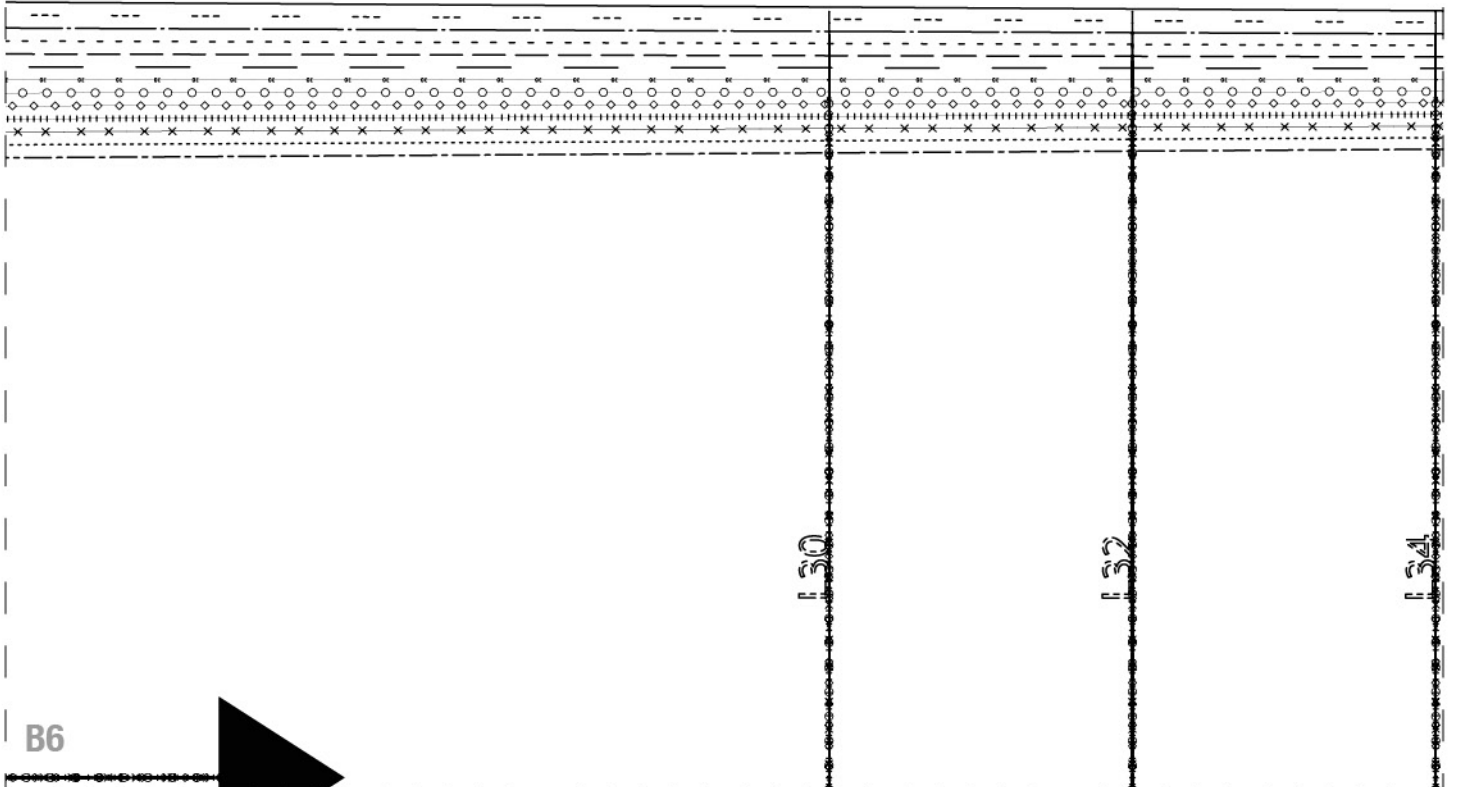
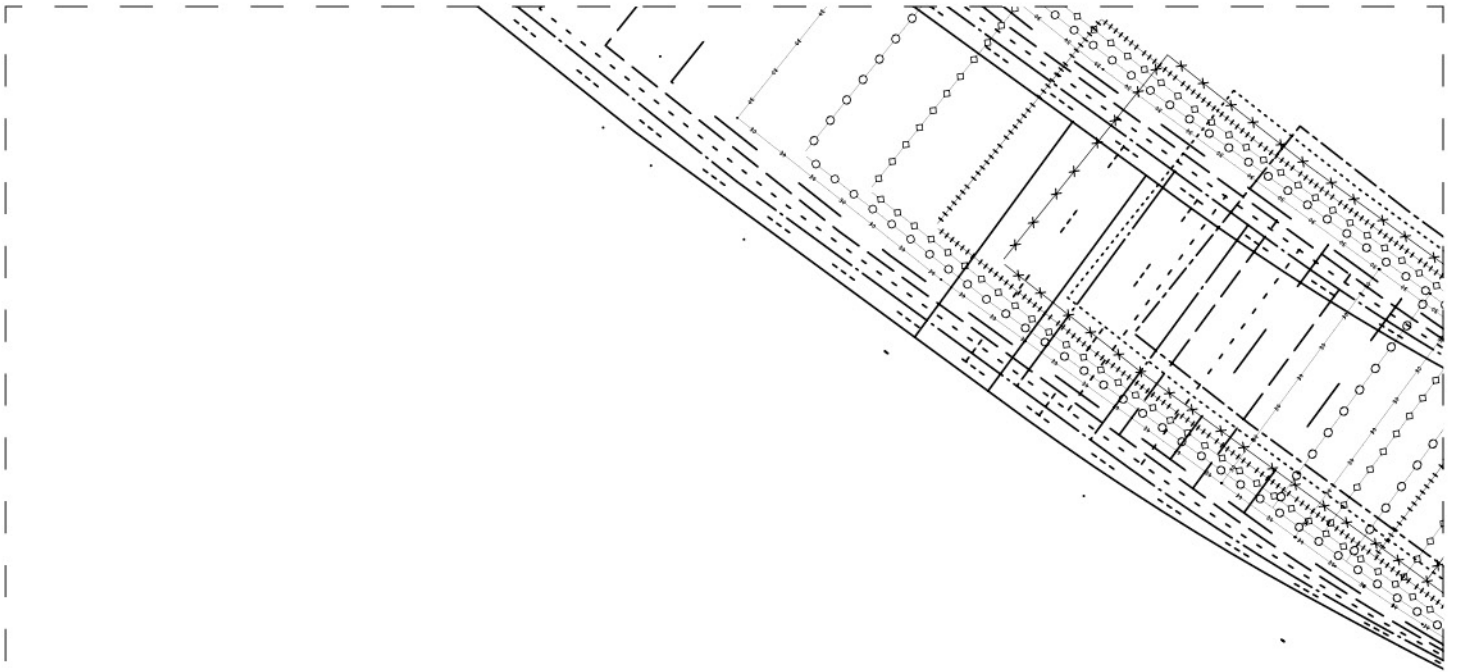
devant droit x 1





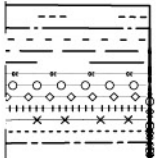
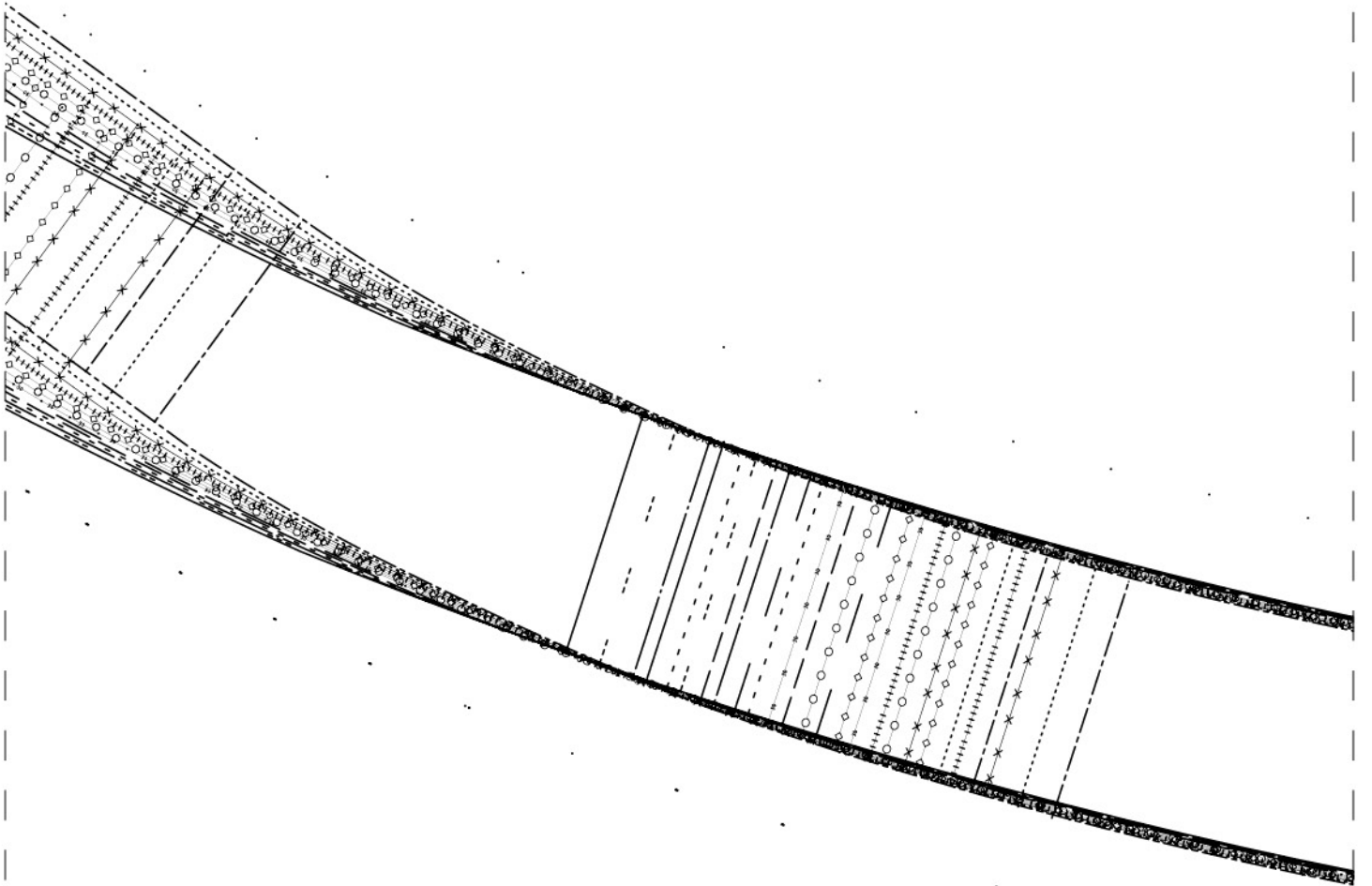






B6



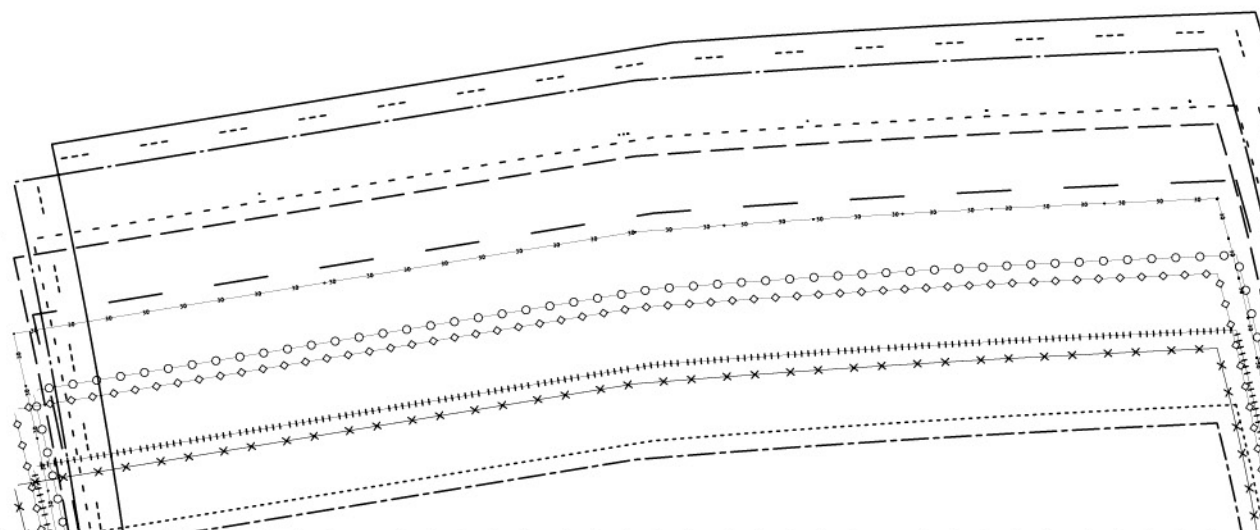
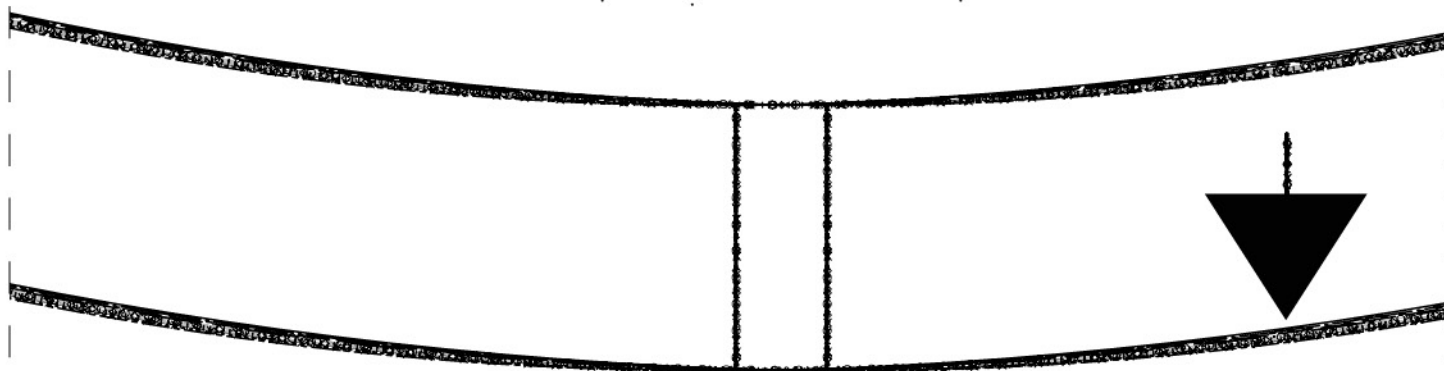


B7

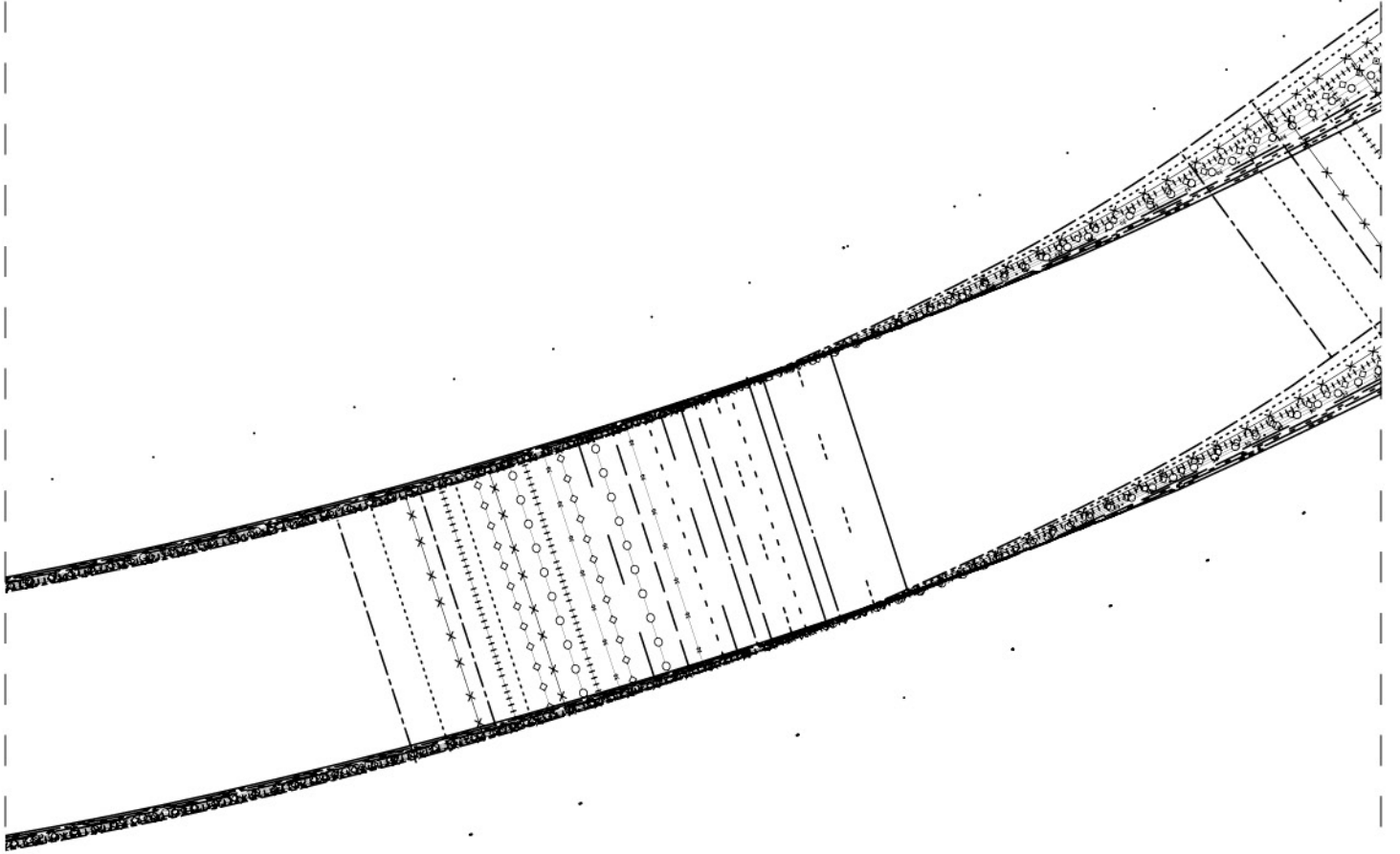
1083  
BORNE IN FRANCE

7

201BRU13  
Ceinture x 2

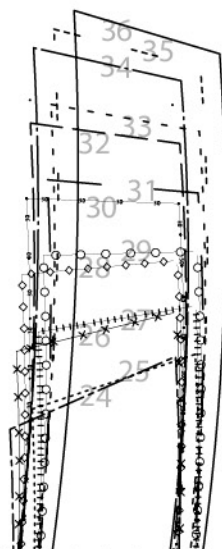
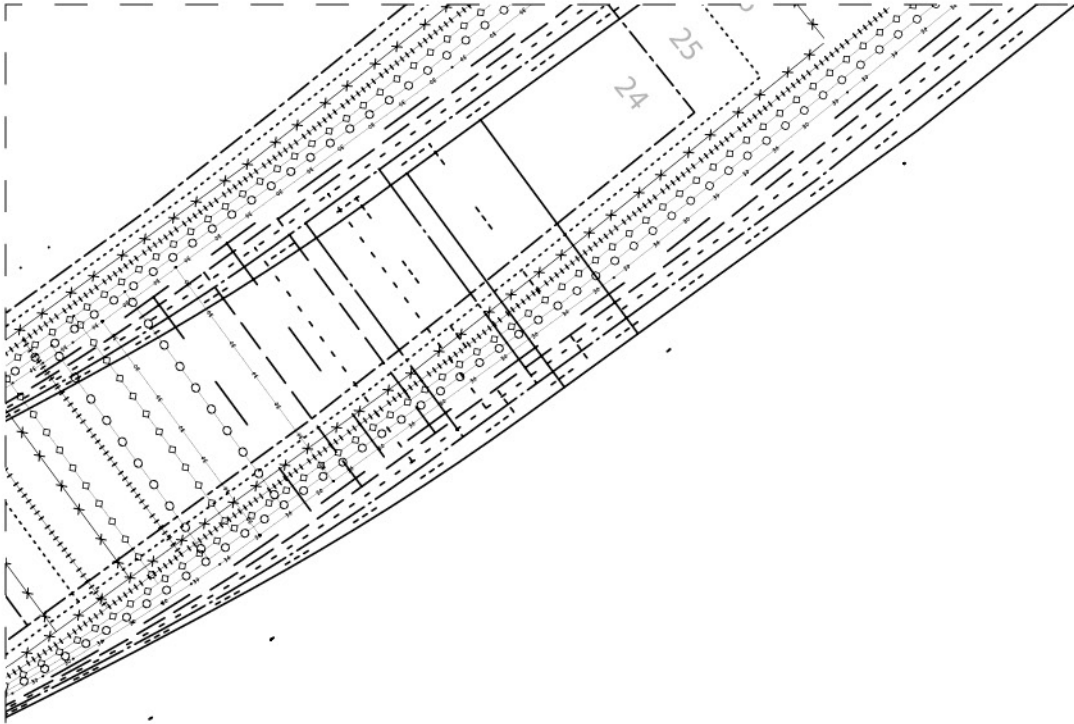


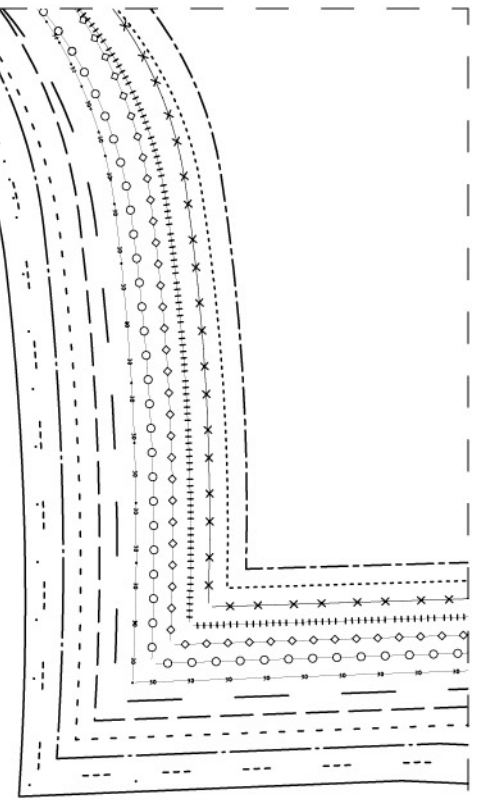
B8



B9

**1083**  
BORNE IN FRANCE





## **201BRU13** : Jeans femme coupe droite

### MATÉRIAUX :

Denim pour le pantalon et satin de coton pour les fonds de poche.

### TAILLES AMÉRICAINES :

largeur du 24 au 36 et longueur du 30 au 36.

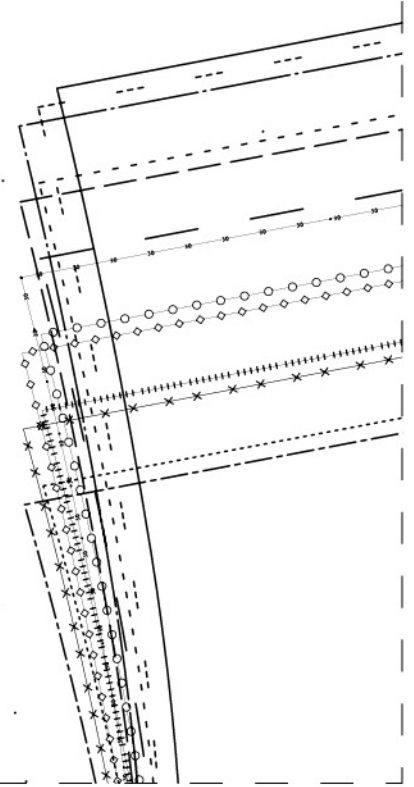
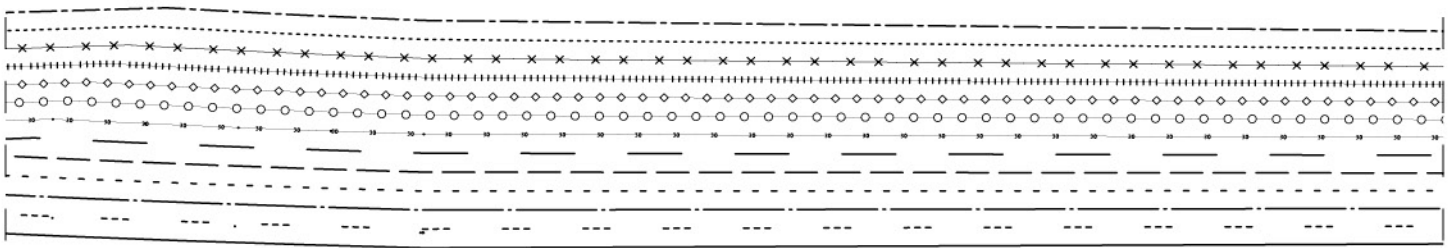
### ACCESSOIRES :

6 Rivets en inox 10 mm

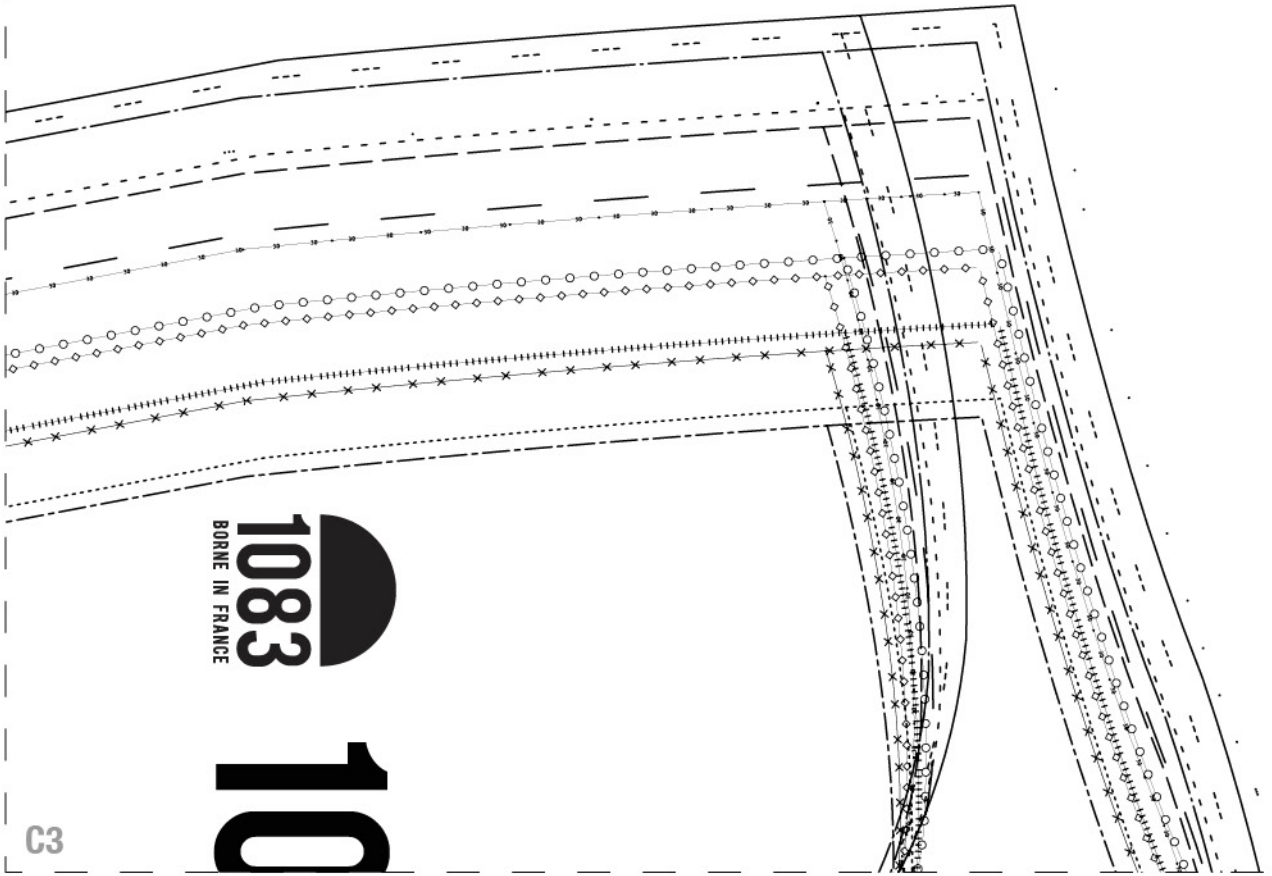
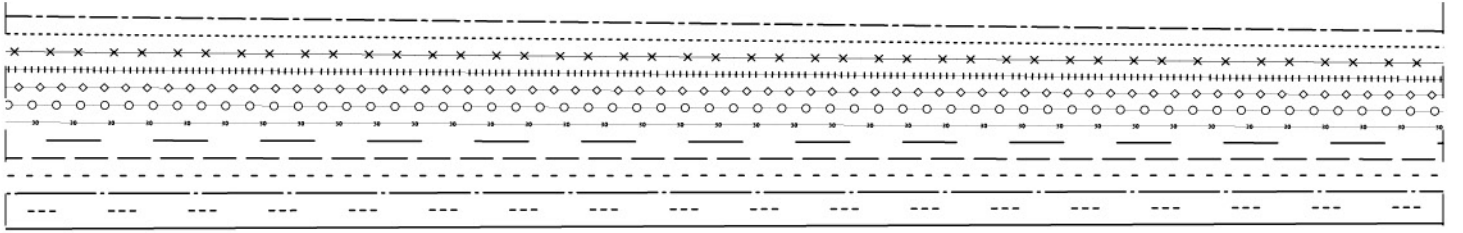
1 fermeture à glissière

1 bouton inox gravé laqué rouge 17mm

**C1** Bais rouge 30mm finition intérieur ceinture



C2

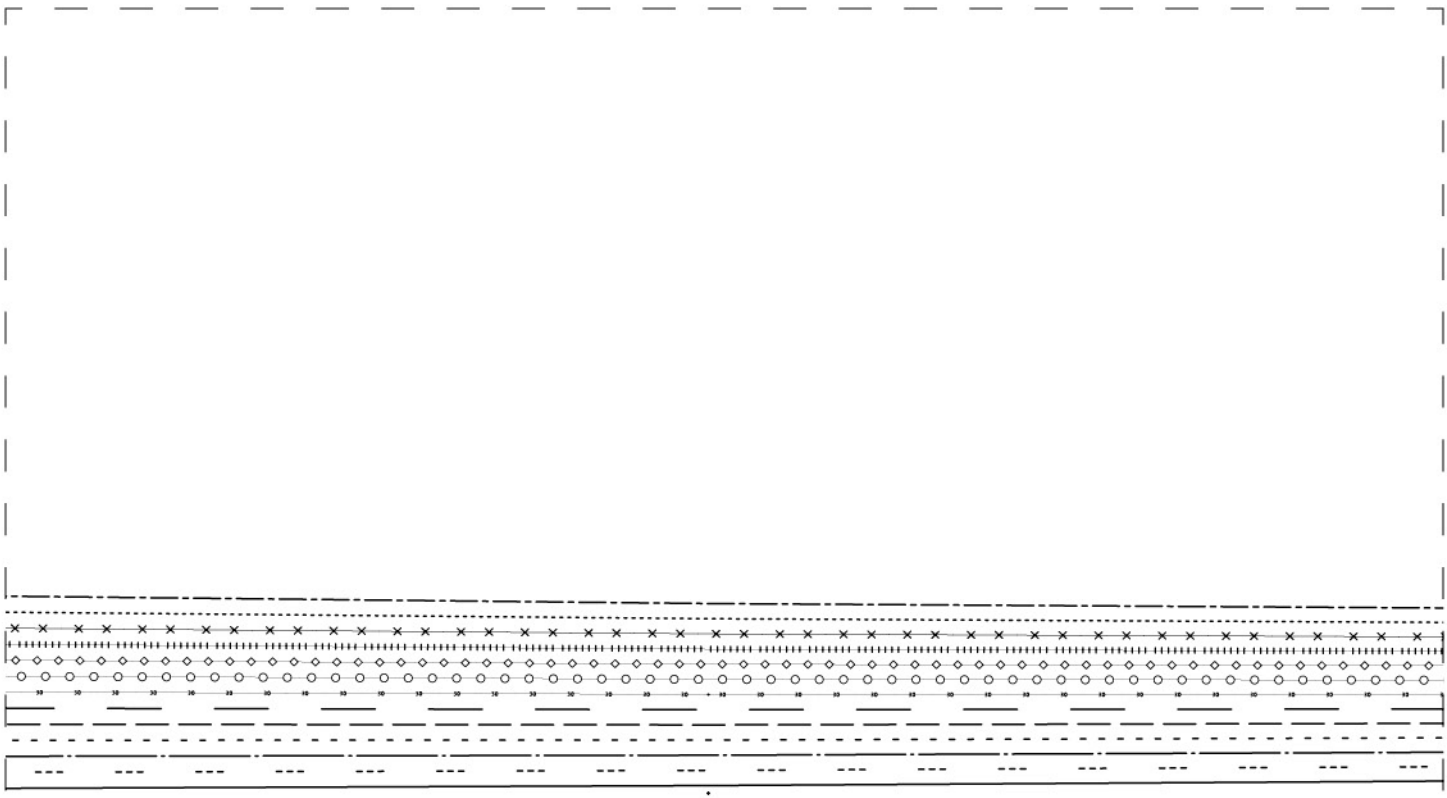


**1083**  
BORNE IN FRANCE

**10**

C3

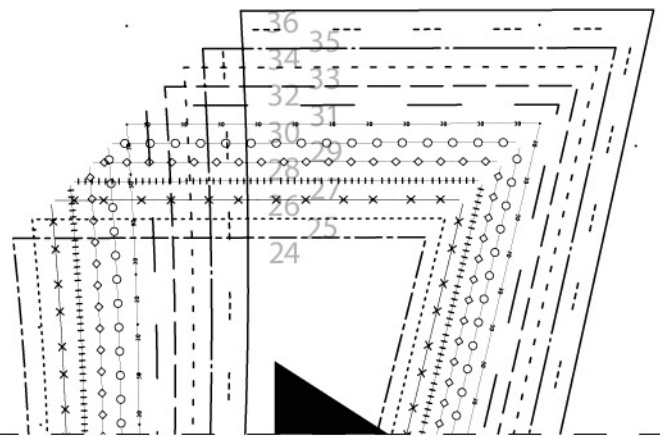




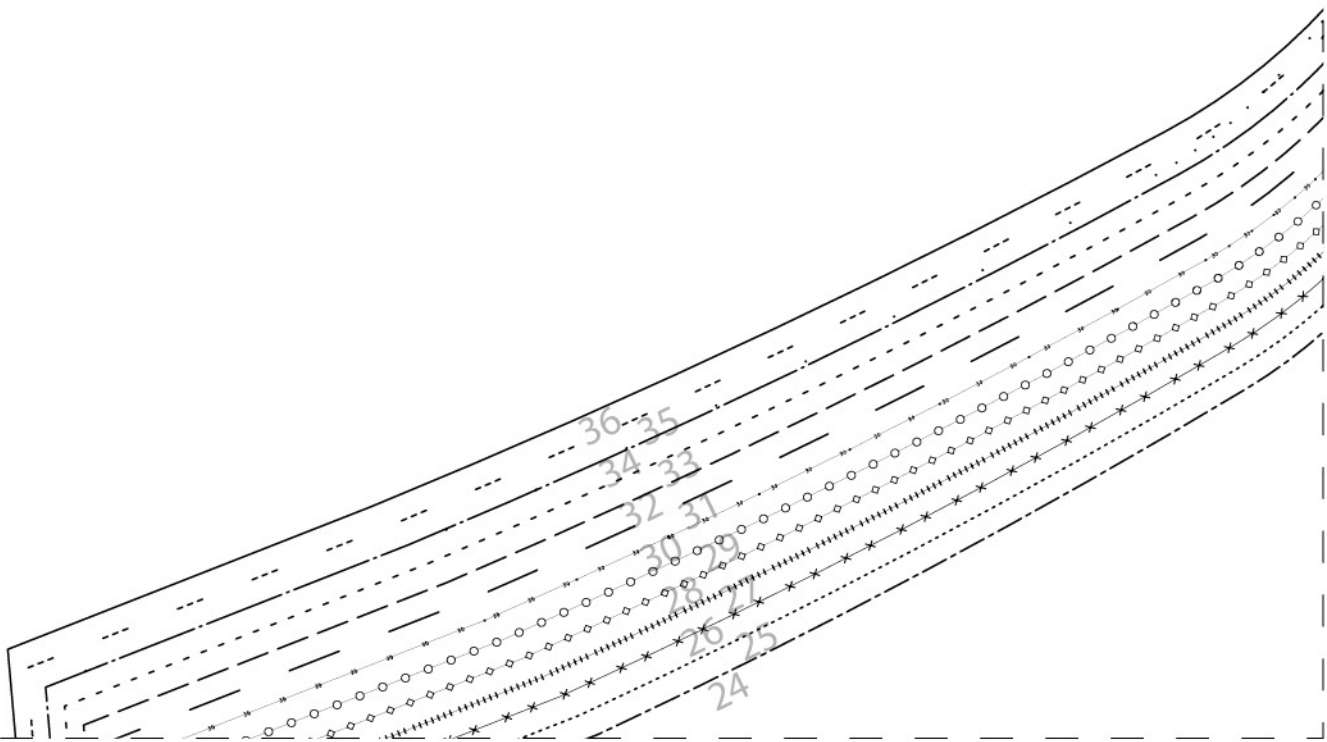
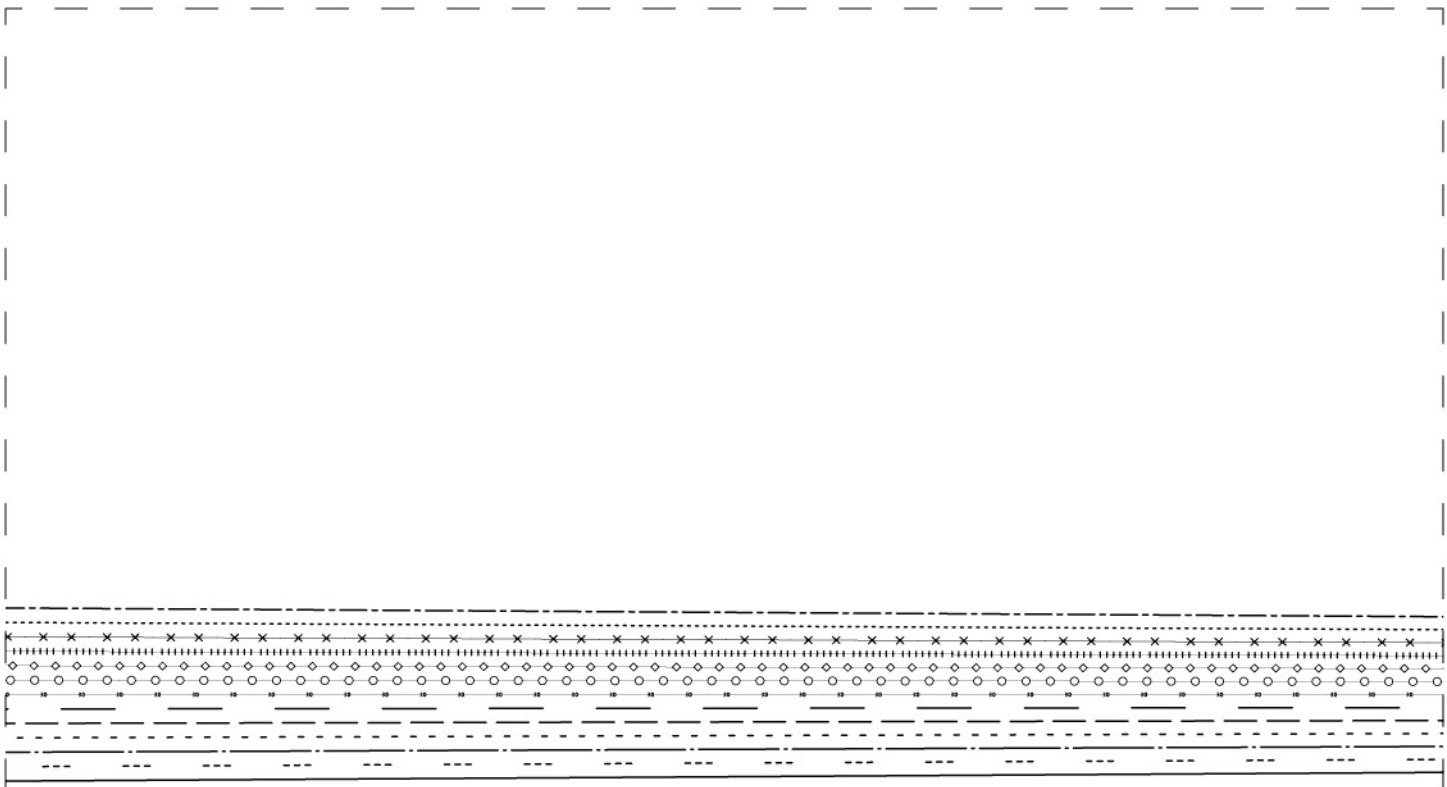
**1083**  
BORNE IN FRANCE

**11**

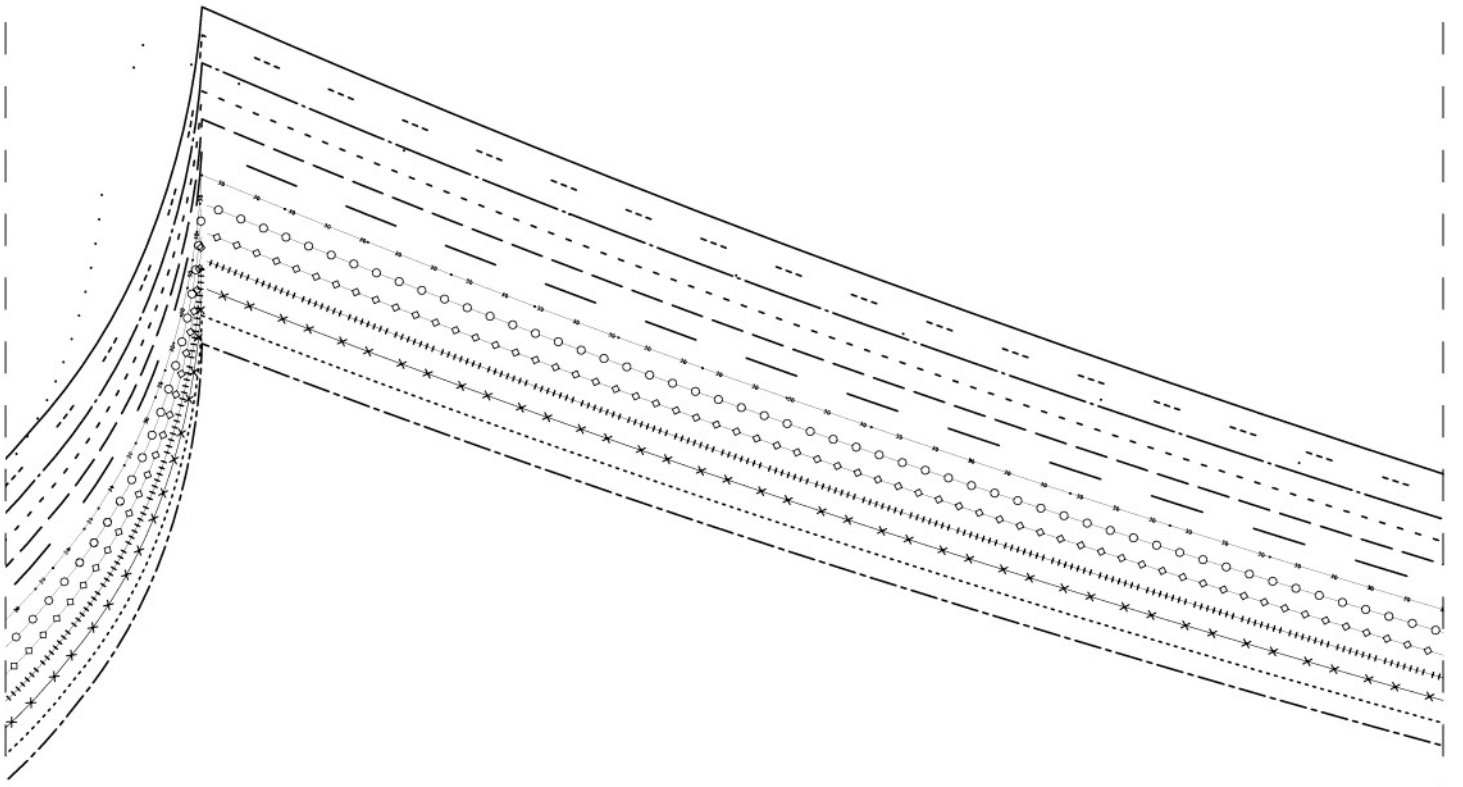
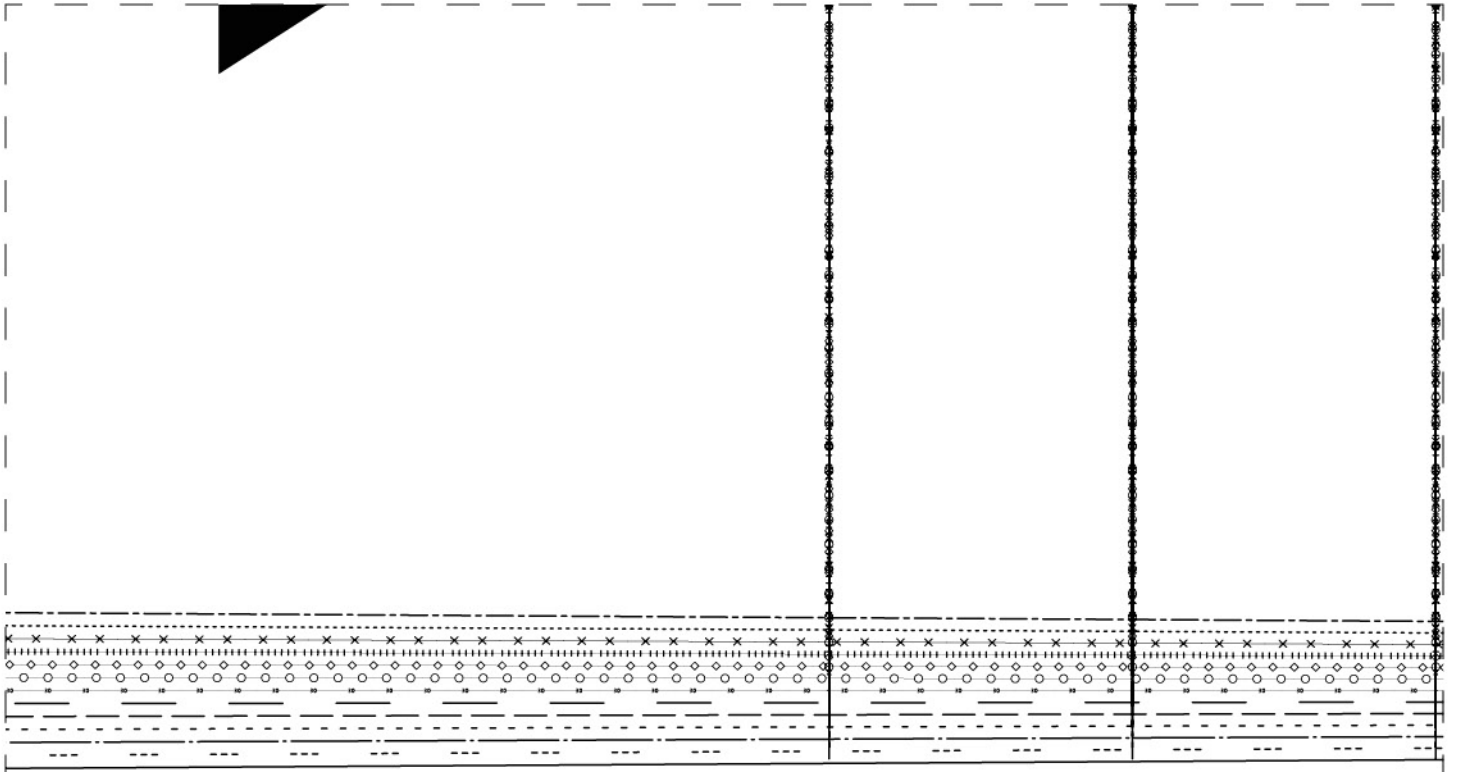
**201BRU13**  
réhausse x 2



C4



C5

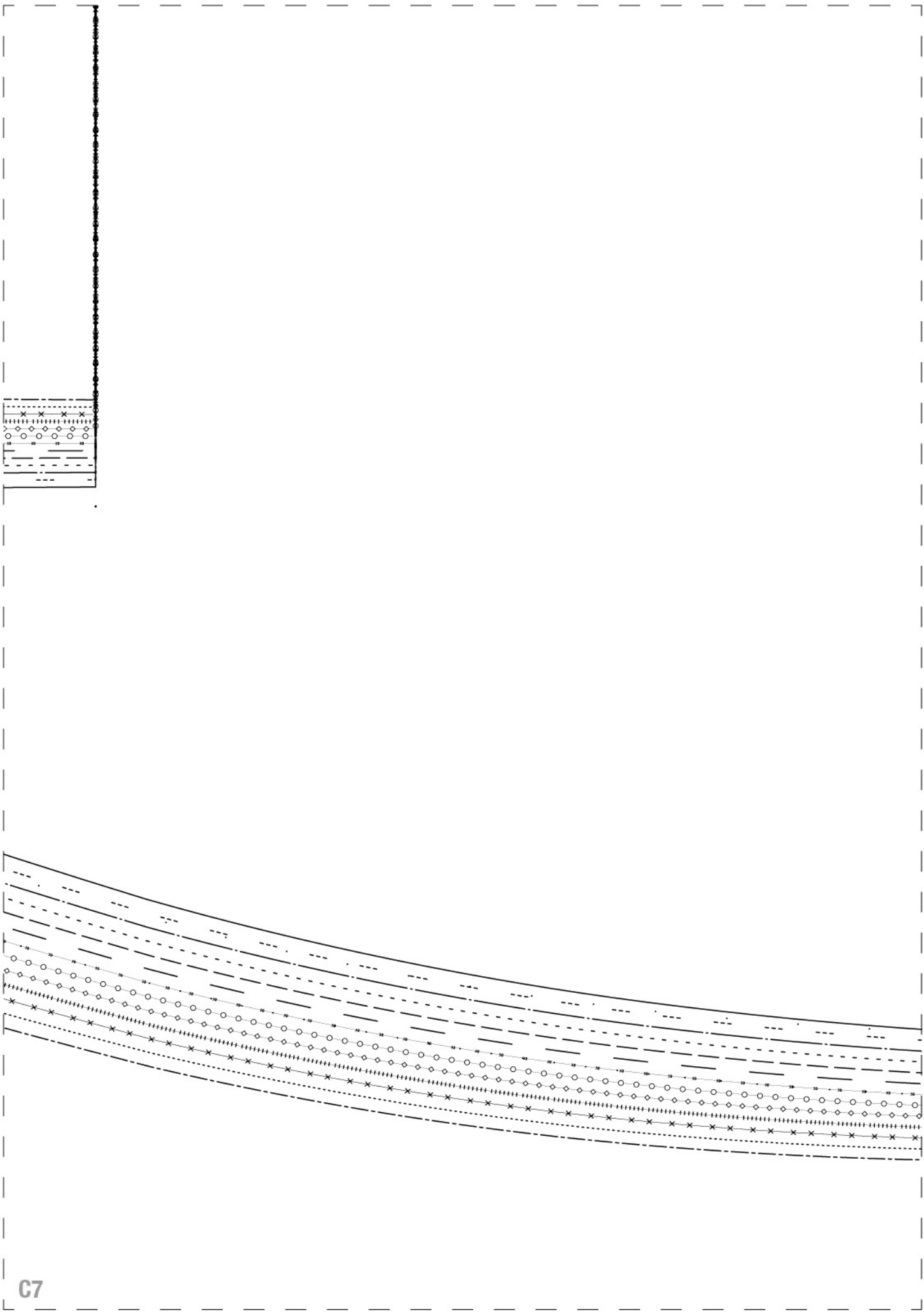


**1083**  
BORNE IN FRANCE

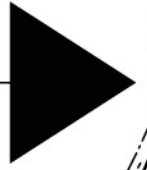
**1**

20150110

C6



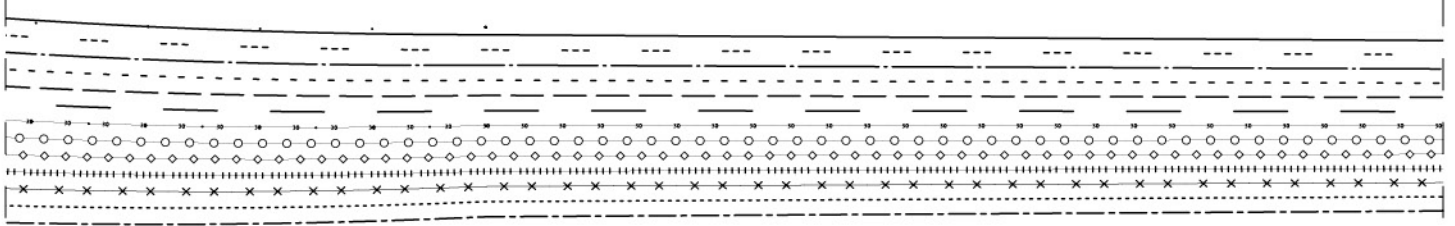
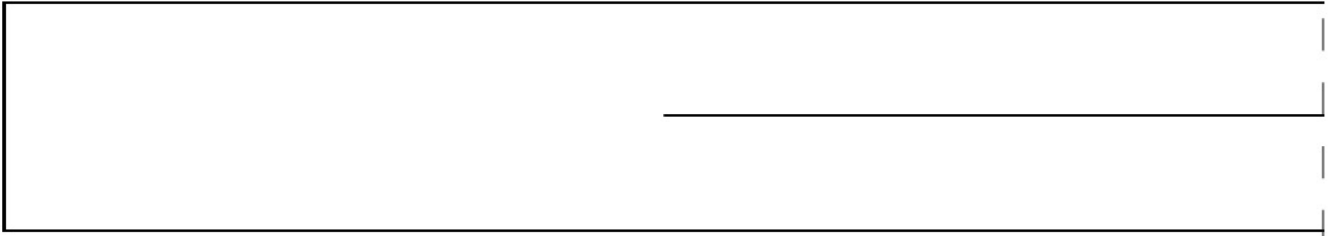
**1083**  
BORNE IN FRANCE



**12**

**201BRU13**

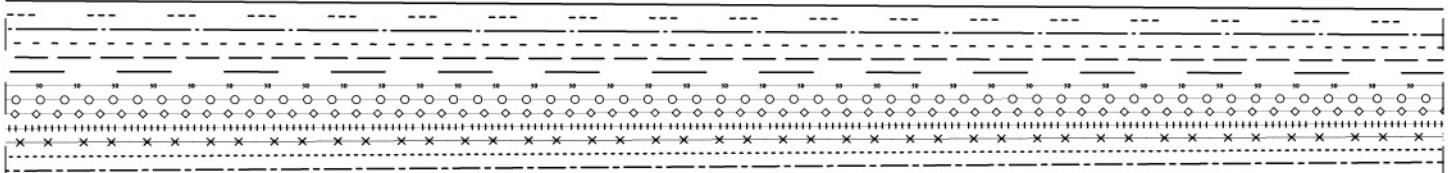
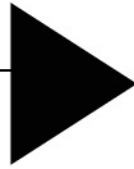
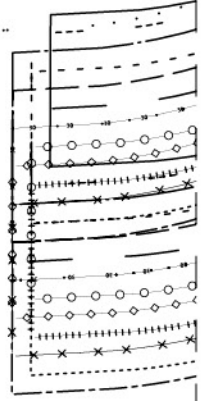
contre poche x 2

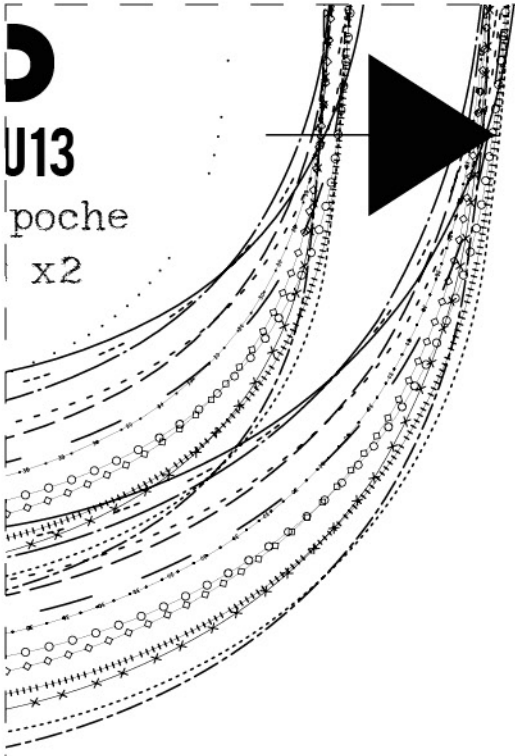




201BR

enforme  
devant



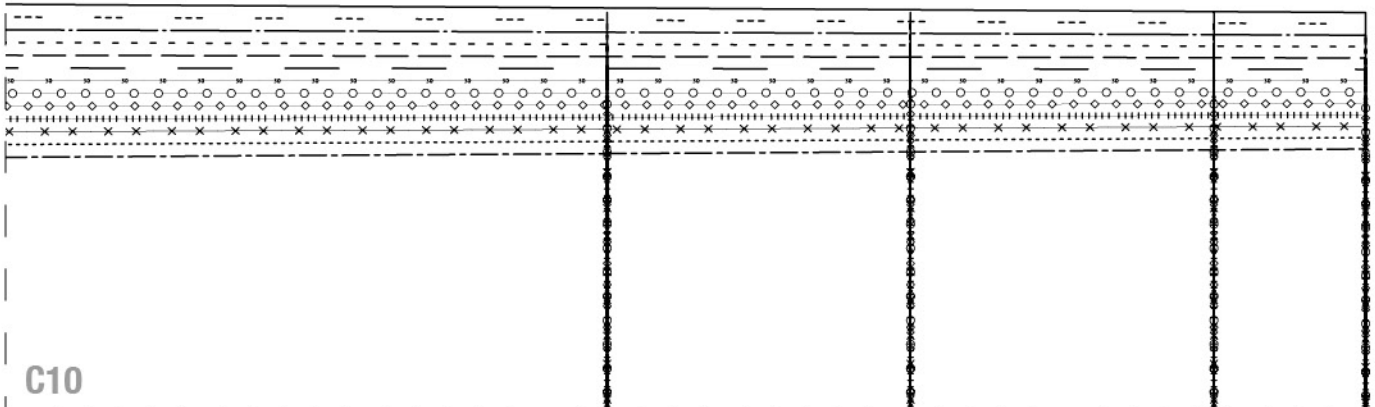


**1083**  
BORNE IN FRANCE

**14**

**201BRU13**

bande 5 passant de 8,5 cm



## 1 Jacron Cuir

### PATRON :

1-Braguette 1 fermeture à glissière, ouverture milieu devant de 190 mm.

2-Passants remplis, surpiqués et plaqués.

3-Ceinture coulissée, assemblée en surpiqûre tout le tour à 2mm. Finition bord intérieur biais. Surpiqûre décorative à 20 mm du bord haut. Fermeture milieu devant avec un bouton de 17 mm.

4- Poches cavalières : découpe assemblée avec contre poche, surpiquées à 2 mm et 7 mm. Assemblage du fond de poche avec contre poche. Renfort des angles hauts avec rivets de 10 mm.

5-Poche à gousset : haut de poche ourlé en surpiqûre double à 3 mm et 7 mm. Surfilée, plaquée en surpiqûre double à 1 mm et 7 mm. Renfort des angles hauts avec rivets de 10 mm.

6-Bas du pantalon : ourlé à 10 mm.

7-Entrejambe et cotés intérieurs assemblés et remplis en surpiqûre double à 1 mm et 7 mm.

8-Côtés extérieurs assemblés à 12 mm, surfilés coutures ouvertes Surpiqûre à 1 mm sur 200 mm (taillebassin) coutures couchées vers le dos.

9-Poches plaquées : Haut des poches ourlé en surpiqûre double à 3 mm et 7 mm. Les poches sont plaquées en surpiqûre double à 1 mm et 7 mm.



Patron jeans femme 201BRU13 de 1083 est mis à disposition selon les termes de la licence Commons Attribution 3.0 France.

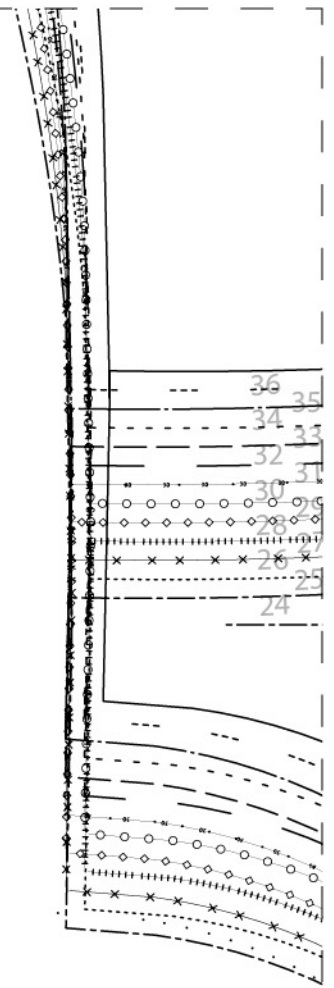
Les autorisations au-delà du champ de cette licence peuvent être obtenues à [contact@](mailto:contact@)



nce Creative

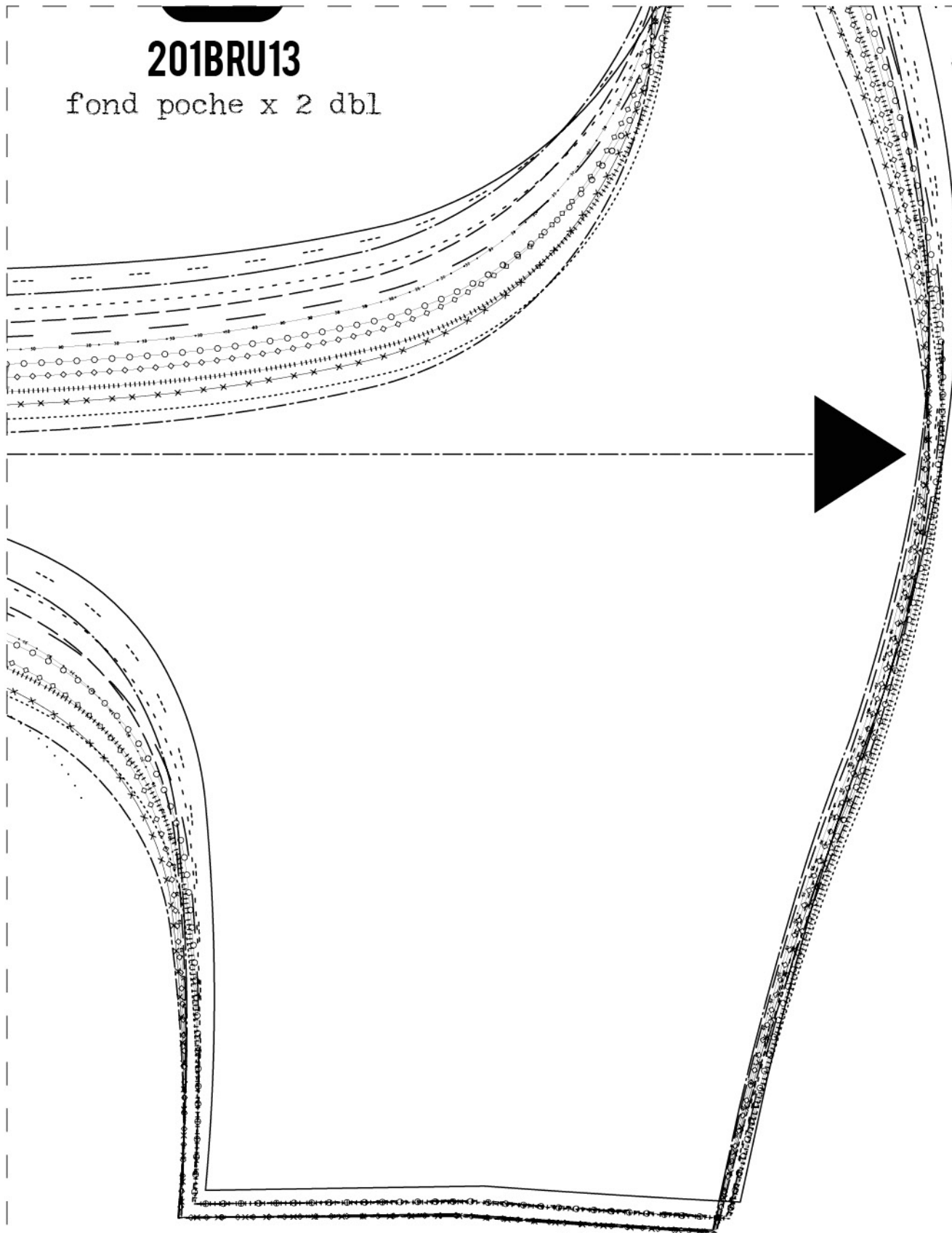
1083.fr.

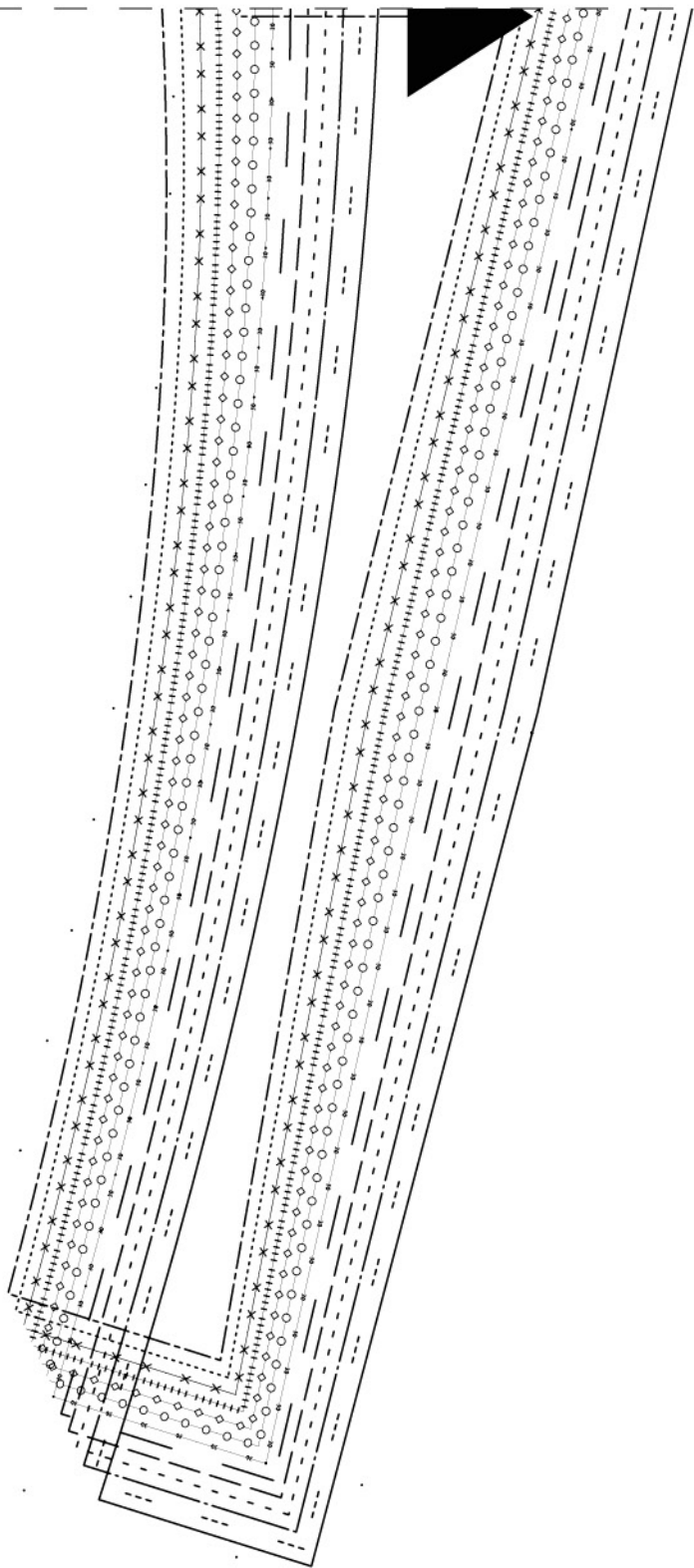
D2

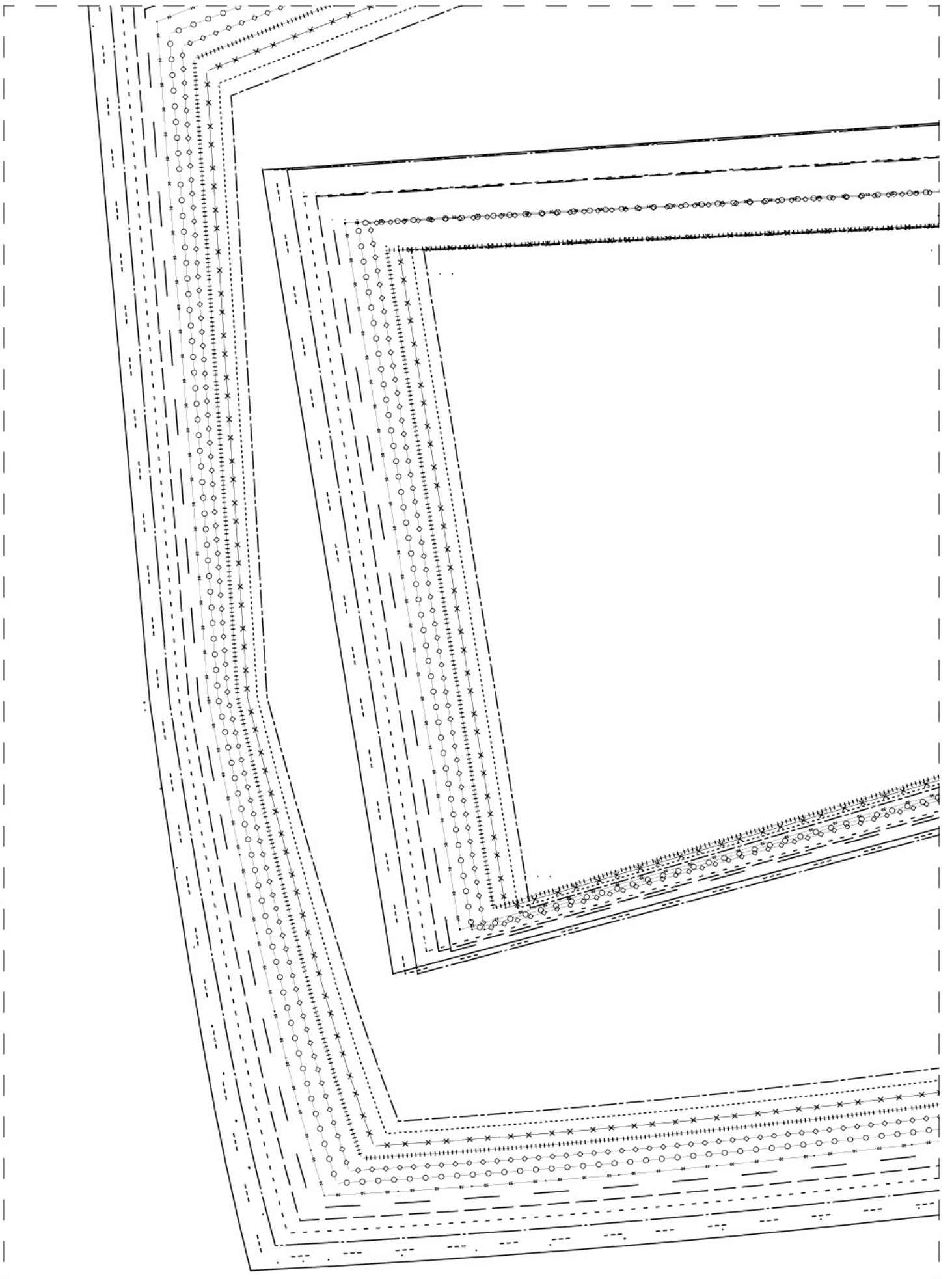


**201BRU13**

fond poche x 2 dbl

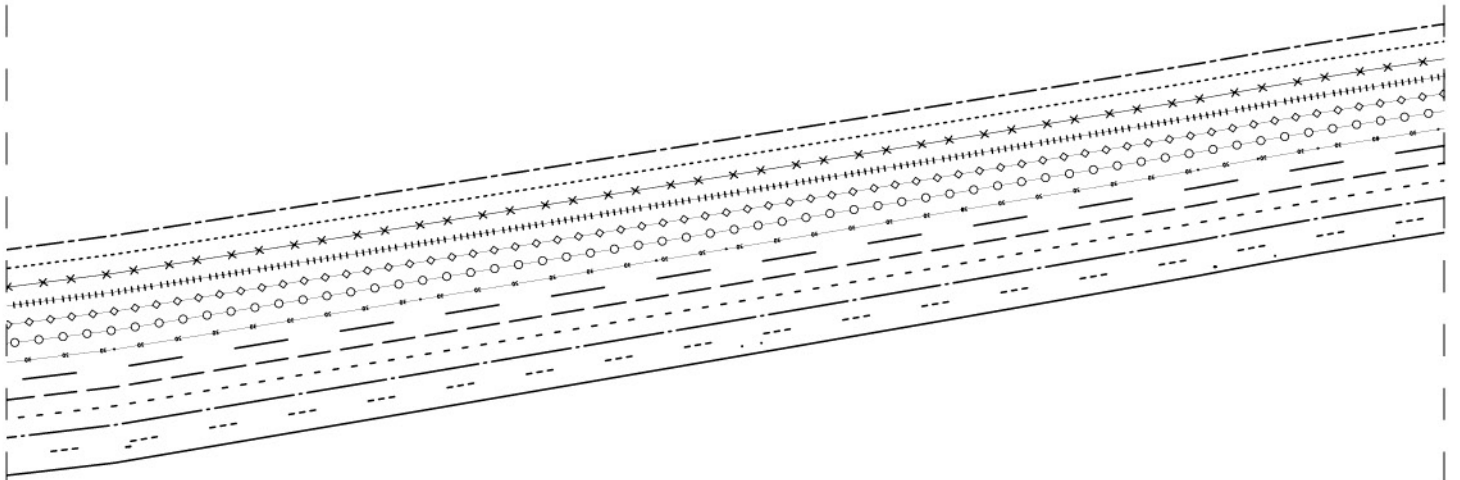
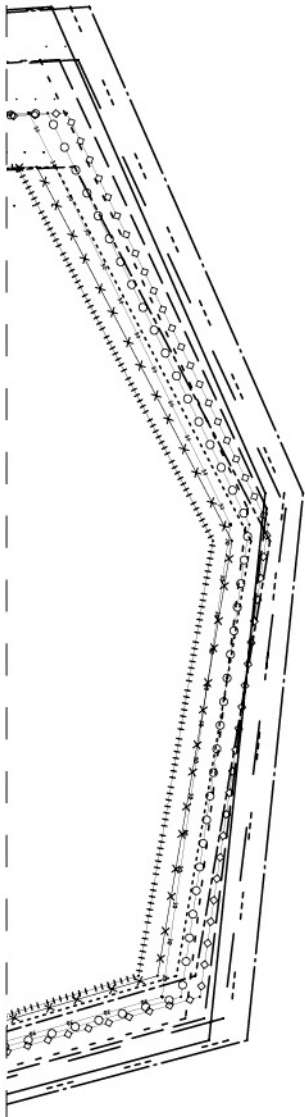


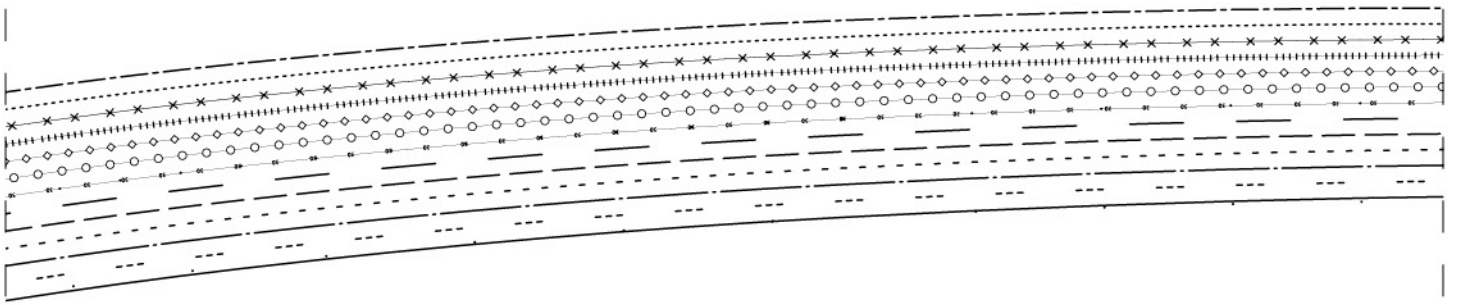


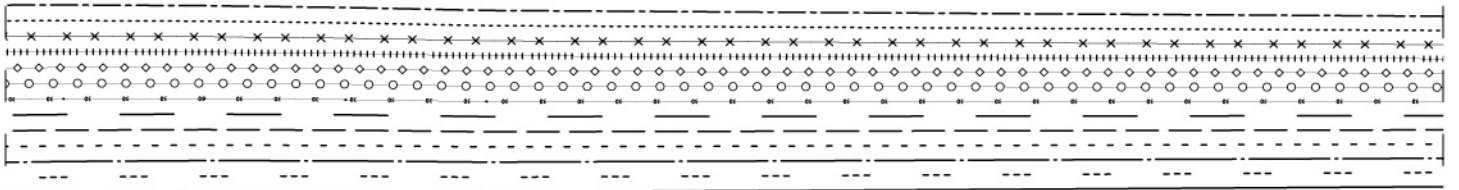
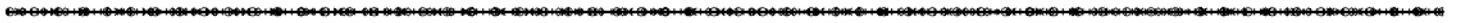


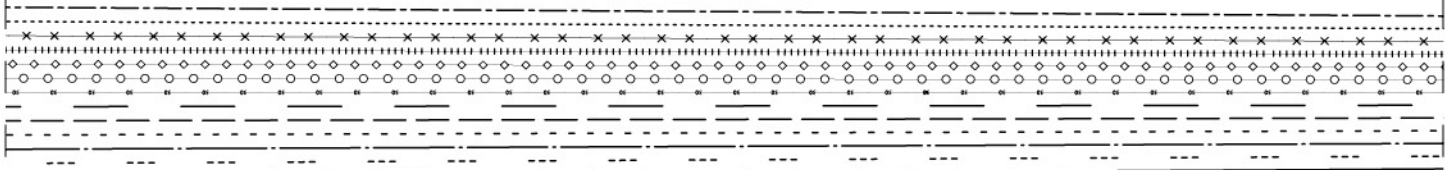
# ZUIBRUIS

dos x 2













130

135

141

136

