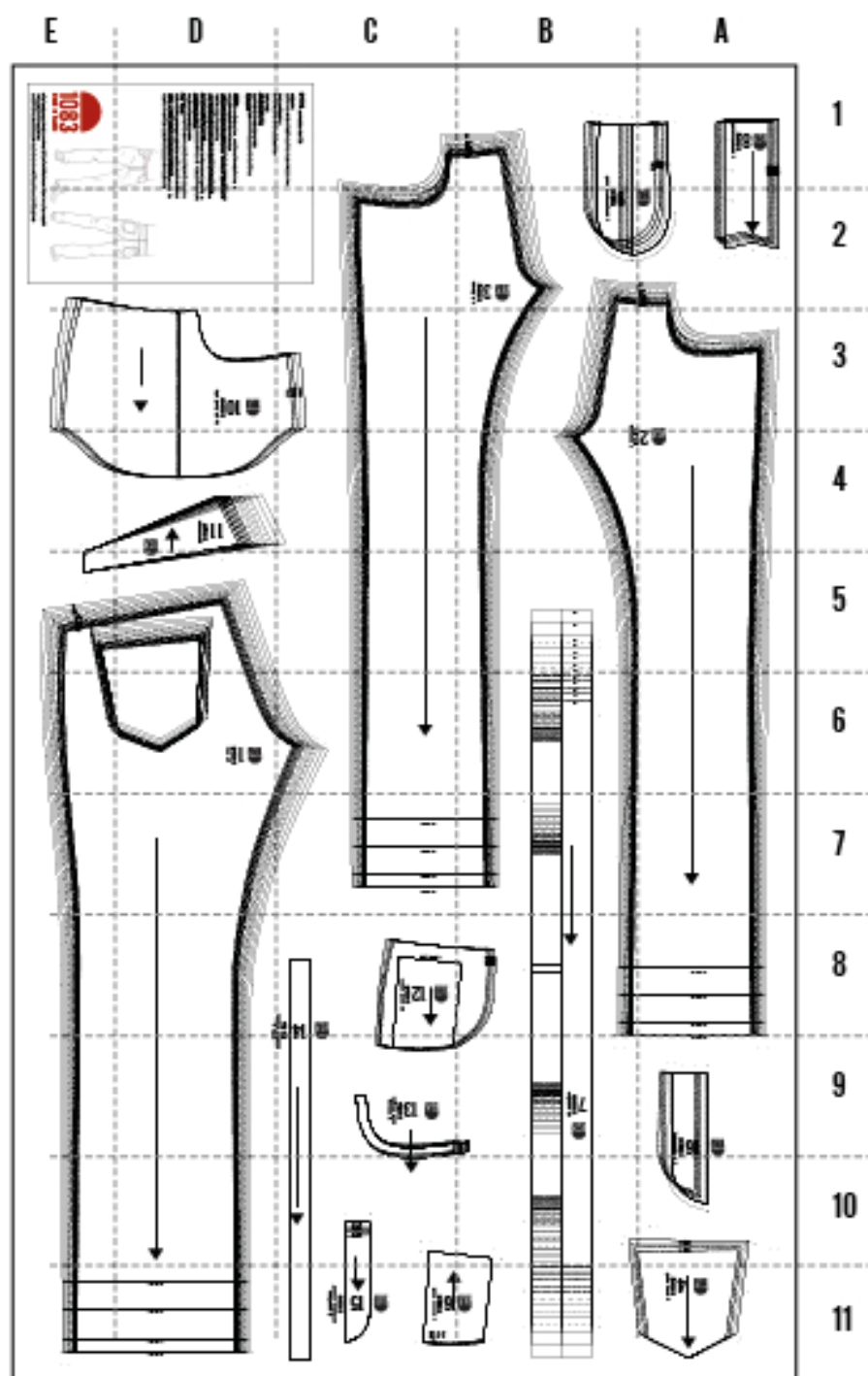


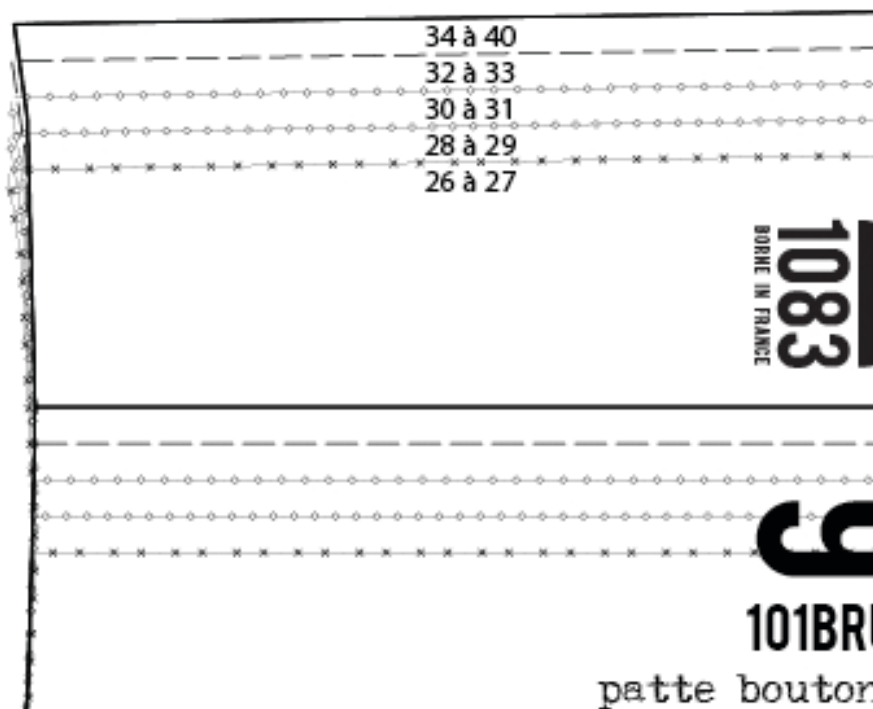
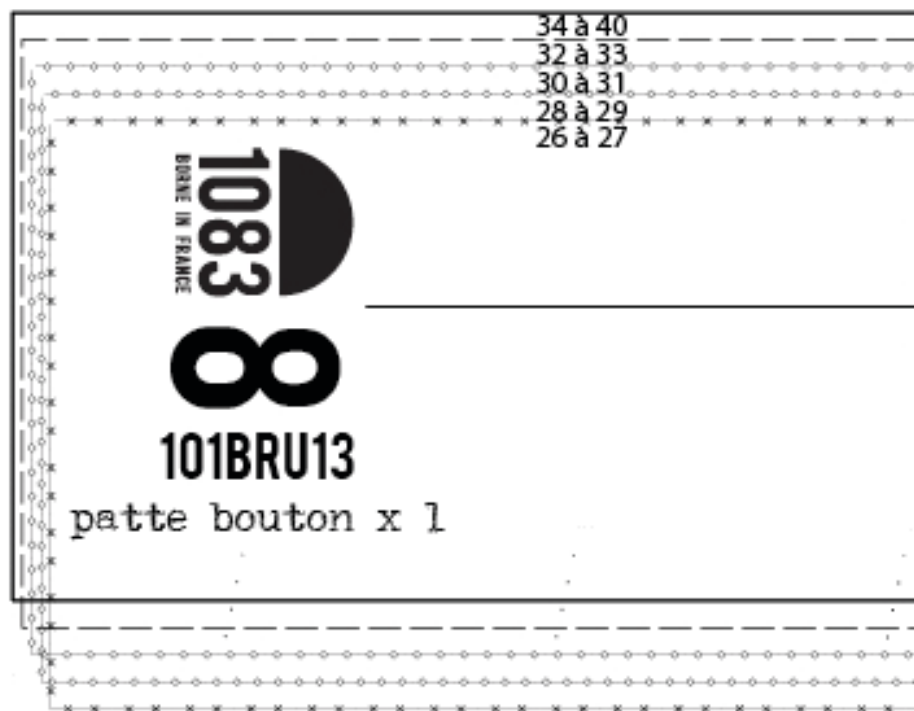
**ATTENTION** : Ce document a été réalisé avec des marges conséquentes pour vous permettre de l'imprimer correctement sur n'importe quelle imprimante A4. Dans les paramètres d'impression : imprimez à la taille réelle. Vous ne devez pas ajuster au format d'impression.

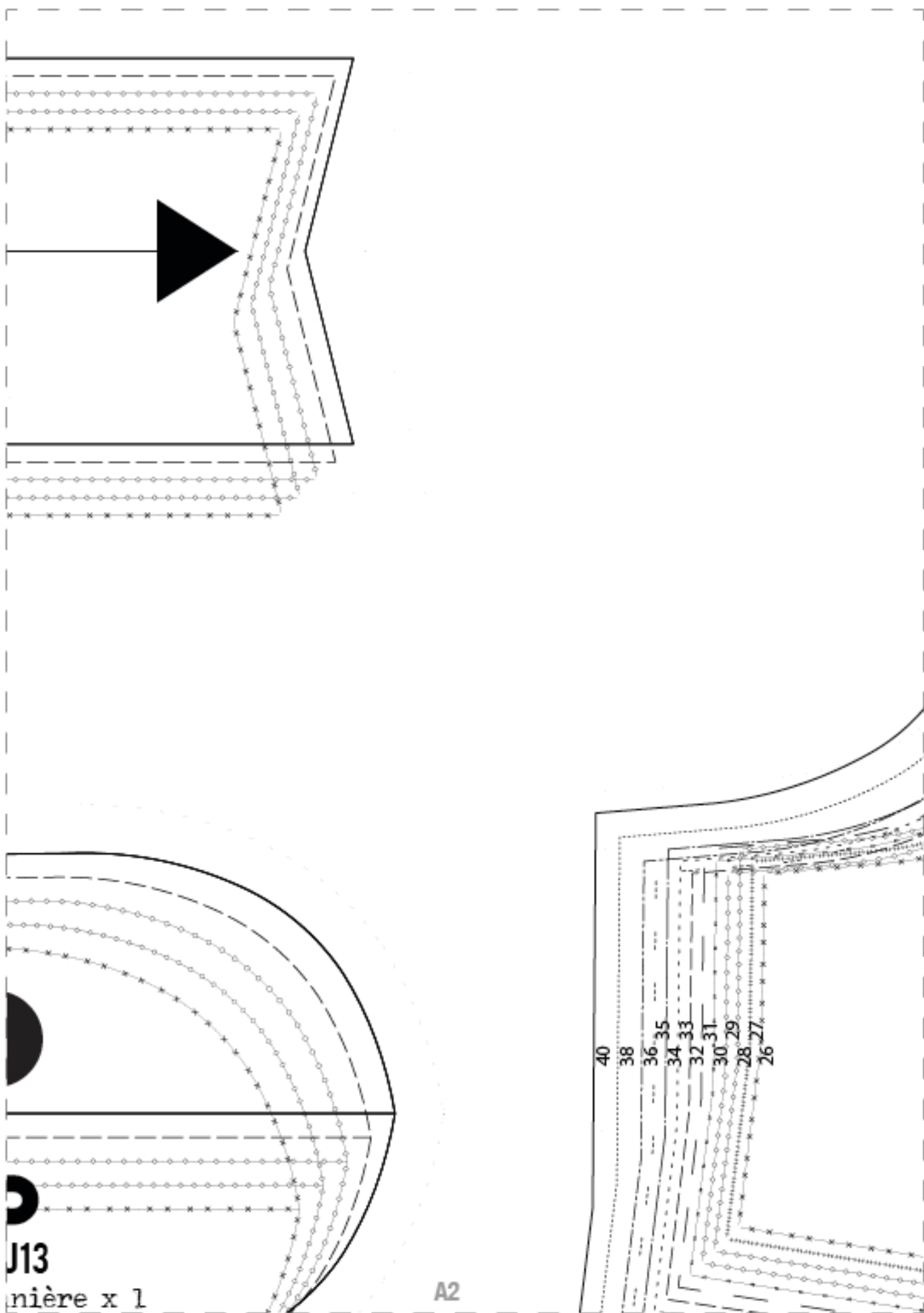


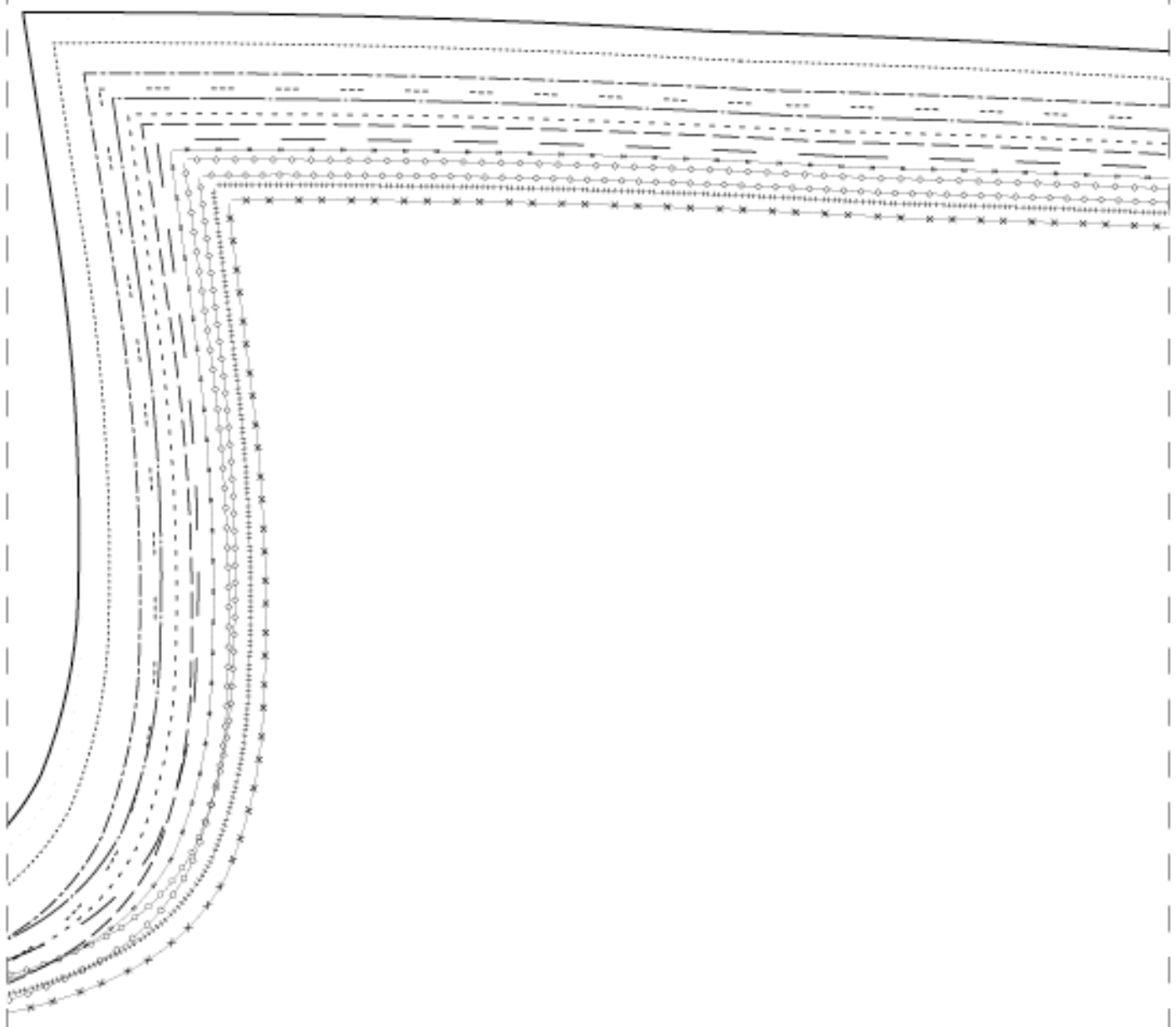
## PATRON JEANS 101 HOMME DROIT



Patron jeans femme 202BRU13 de 1083 est mis à disposition selon les termes de la licence Creative Commons Attribution 3.0 France. Les autorisations au-delà du champ de cette licence peuvent être obtenues à [contact@1083.fr](mailto:contact@1083.fr).







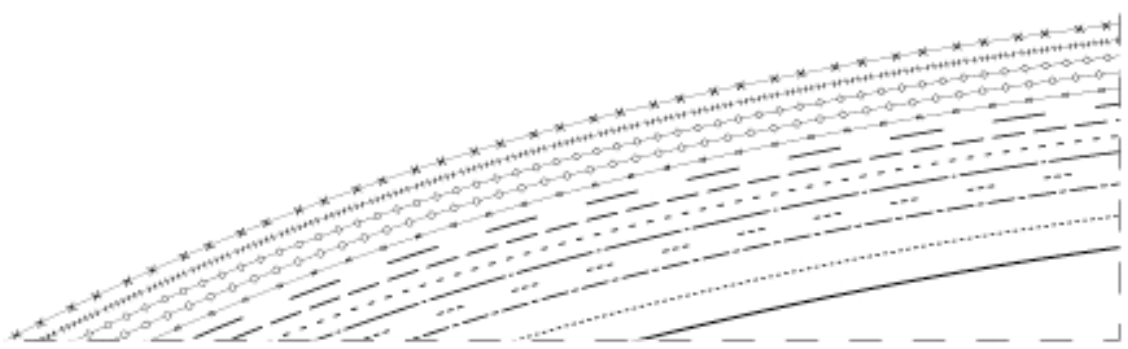
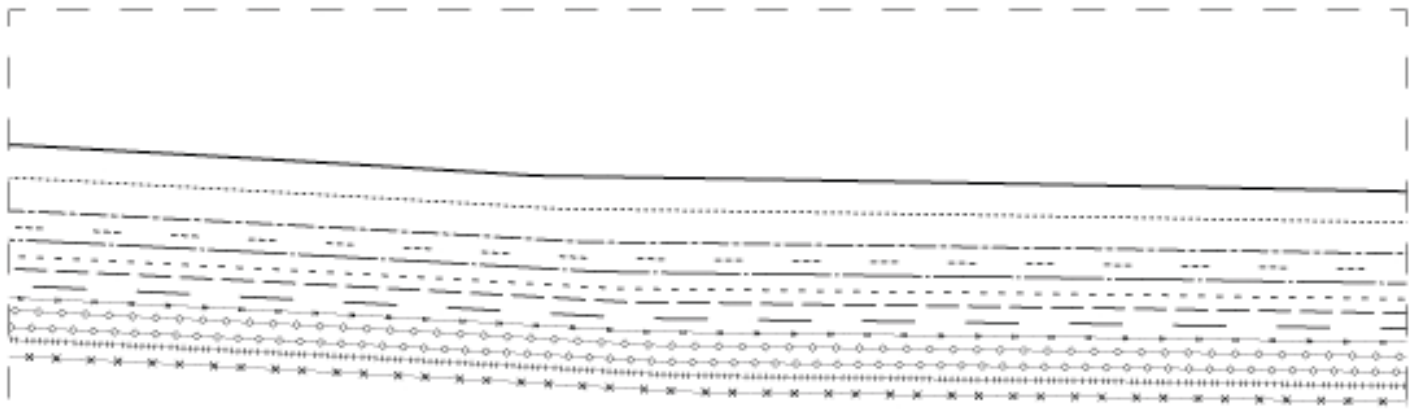
**1083**  
BORNE IN FRANCE

**2**

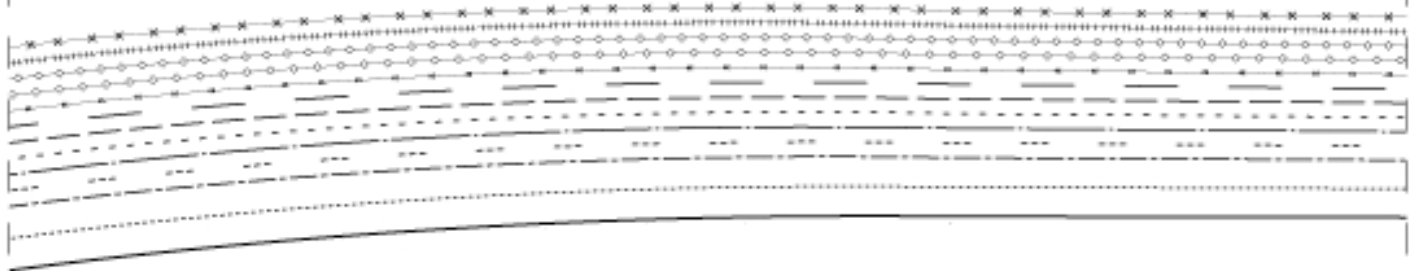
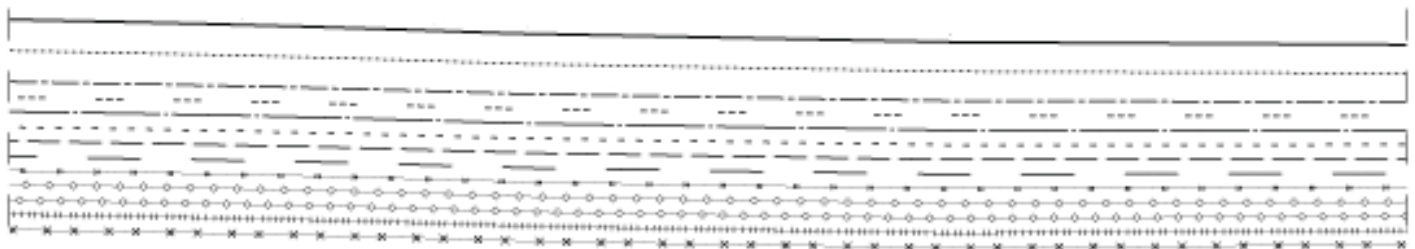
**101BRU13**

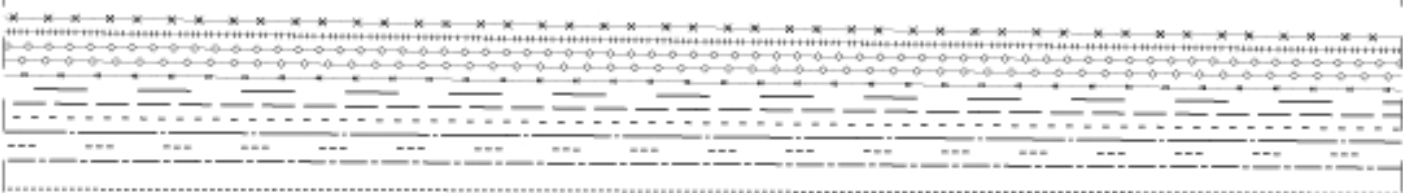
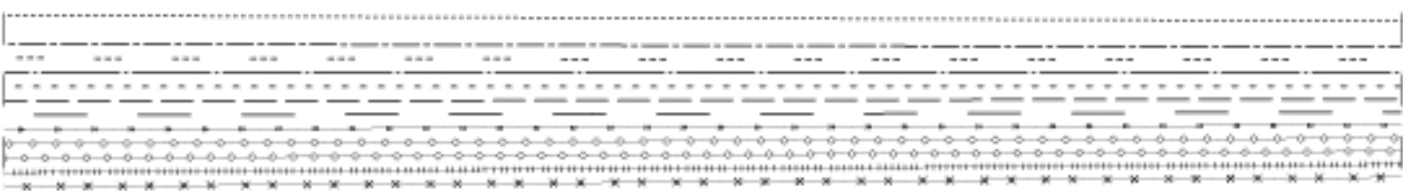
devant x l

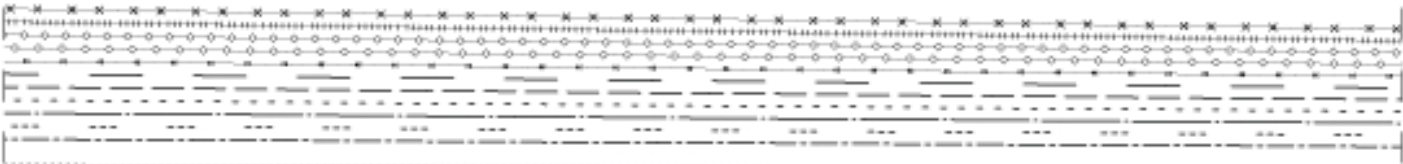
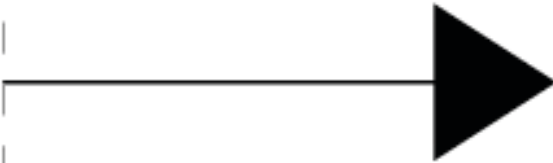
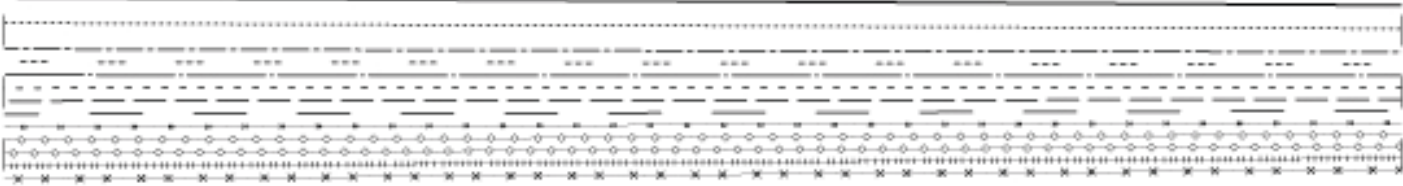
A3



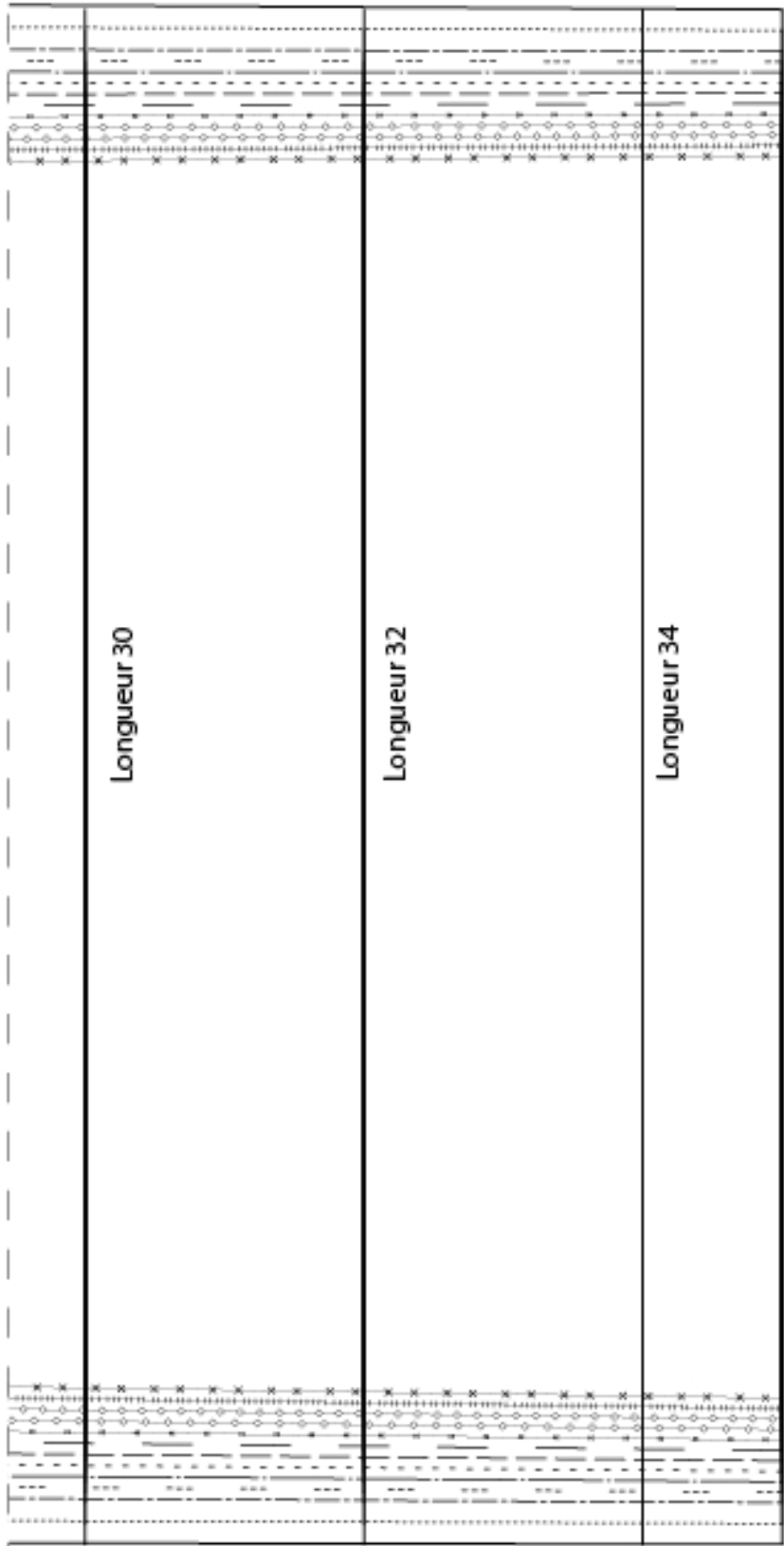
A4









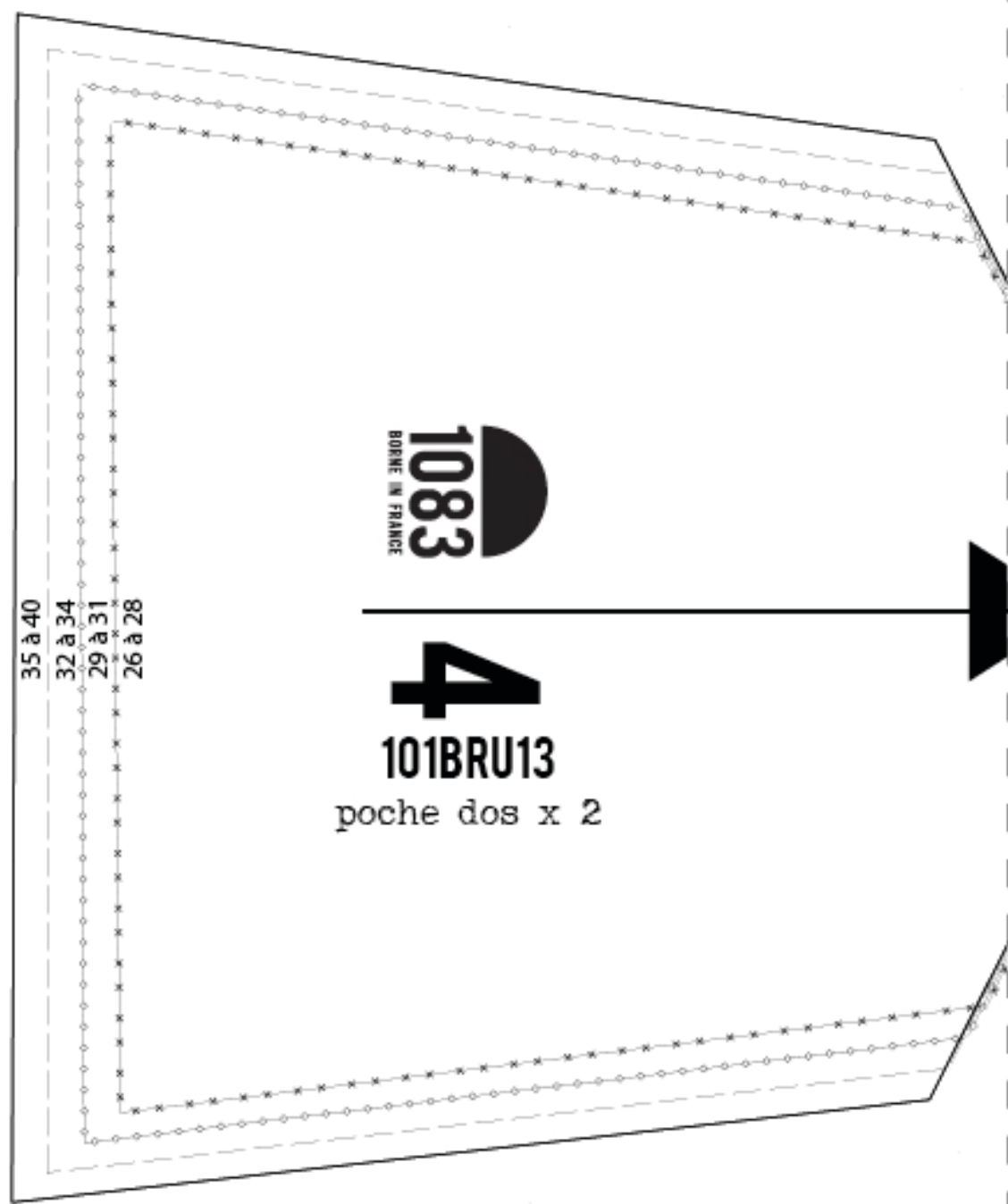


1083  
BORNE IN FRANCE

16

101BRU13

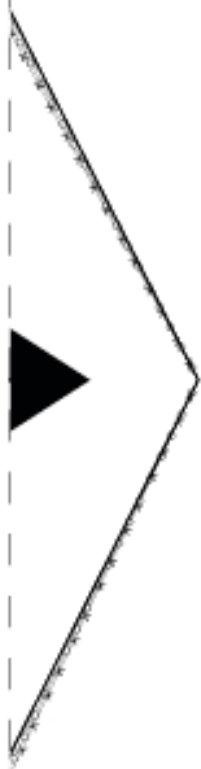
boutonnière x 1



**1083**  
BORNE EN FRANCE

**4**  
**101BRU13**  
poche dos x 2

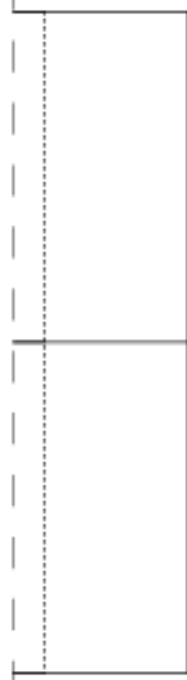
35 à 40  
32 à 34  
29 à 31  
26 à 28

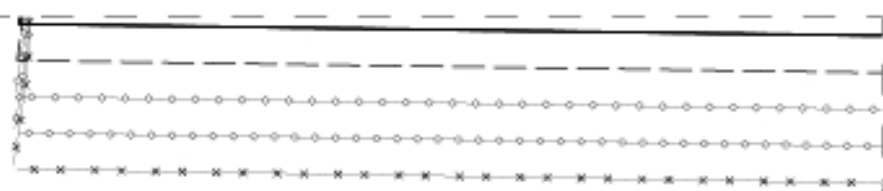
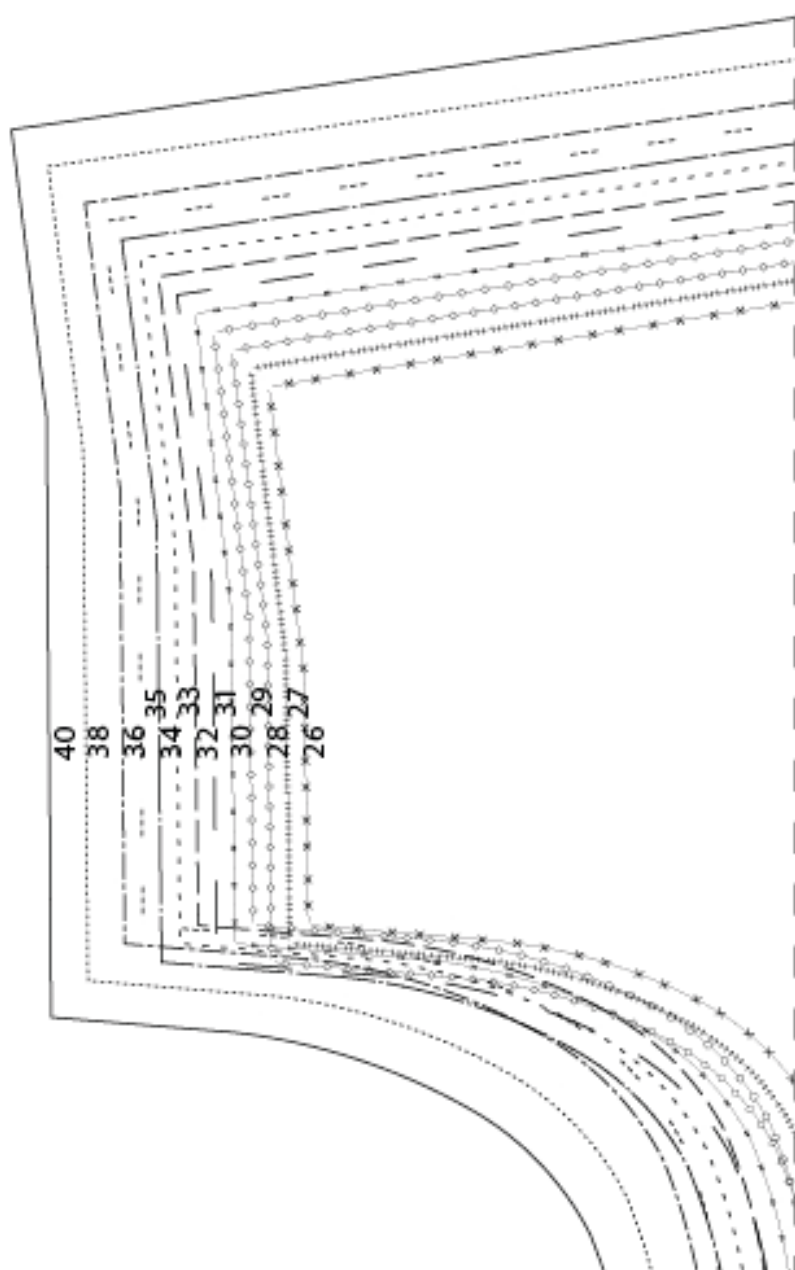


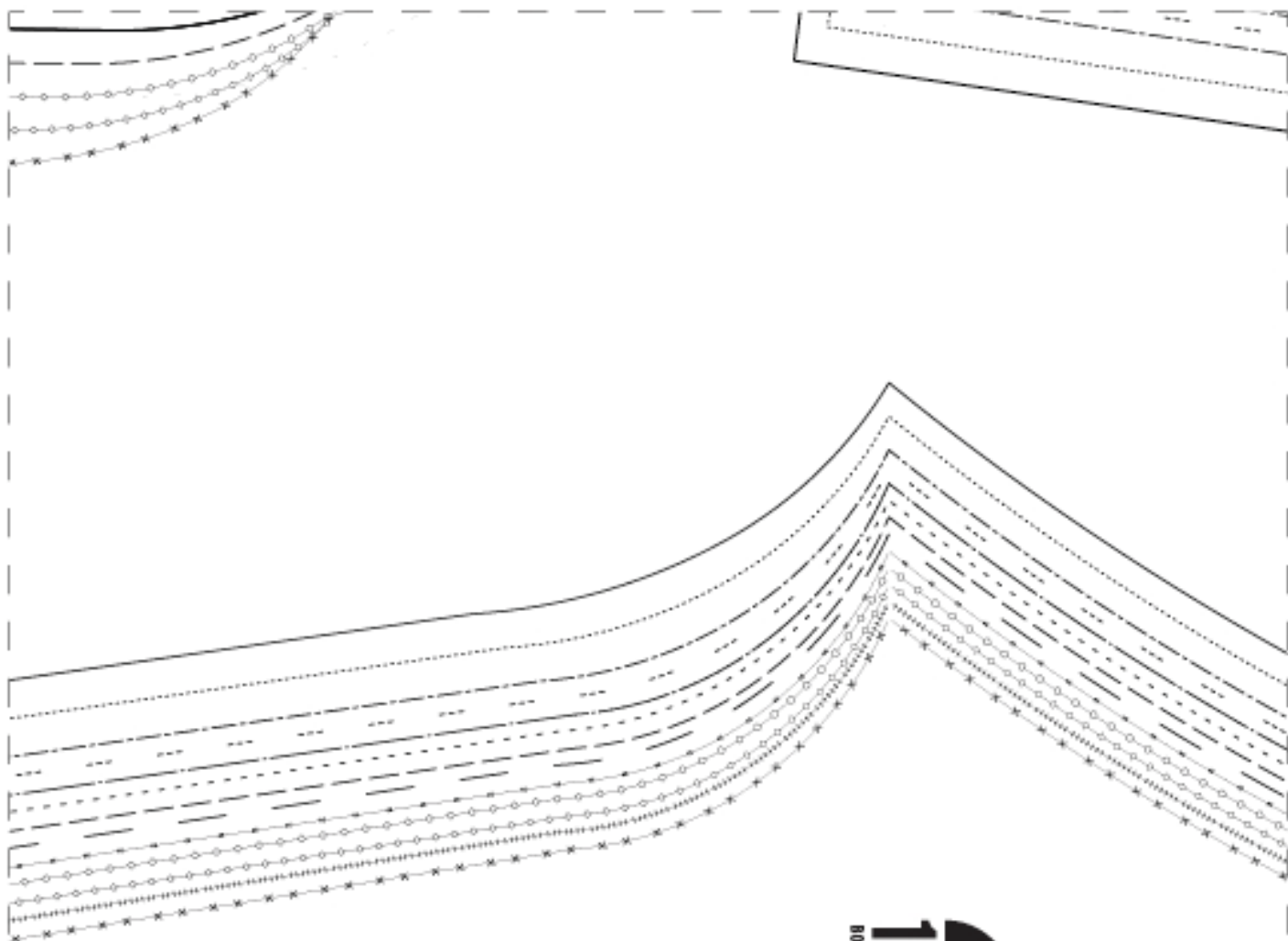
A11



B11



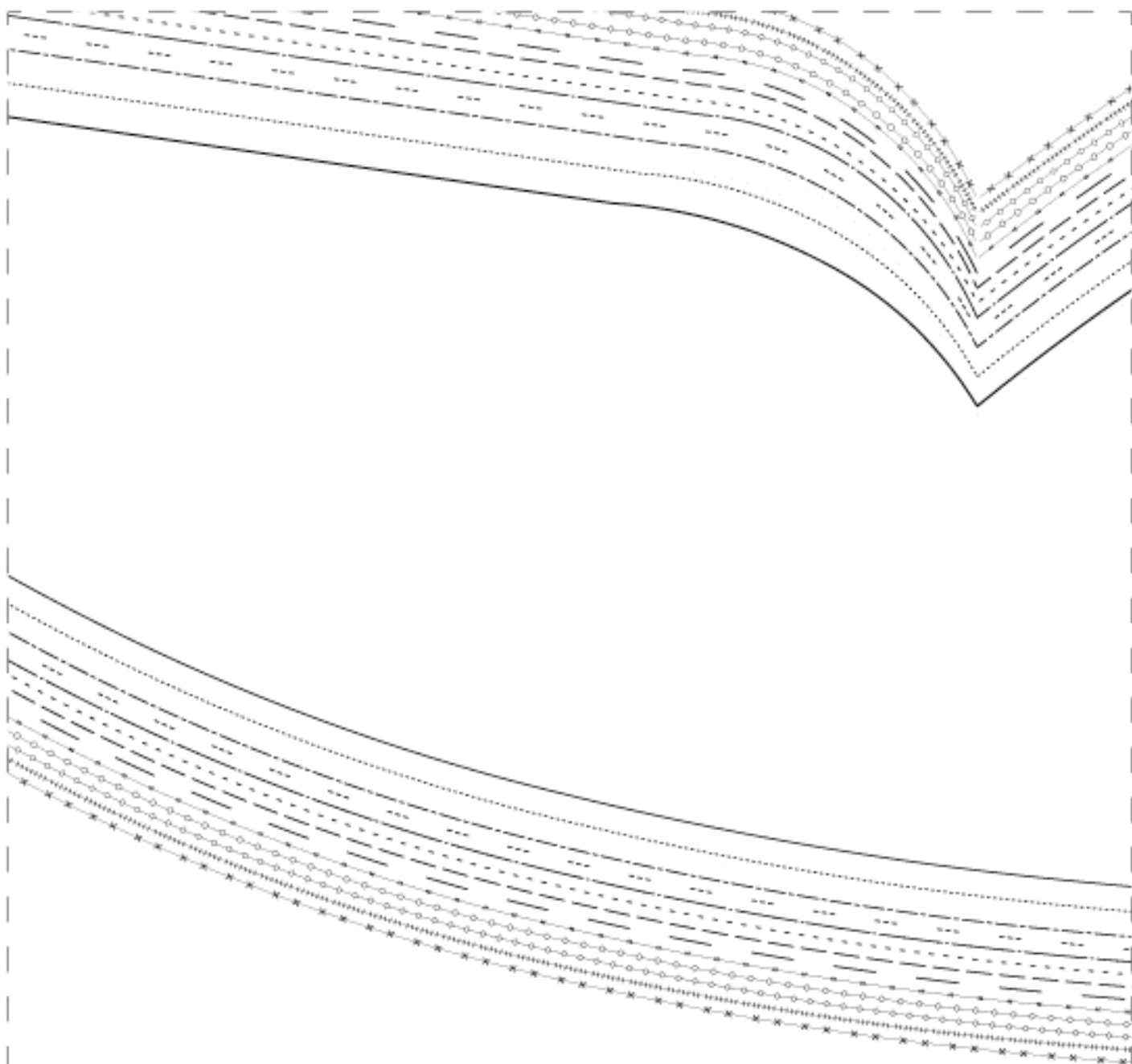


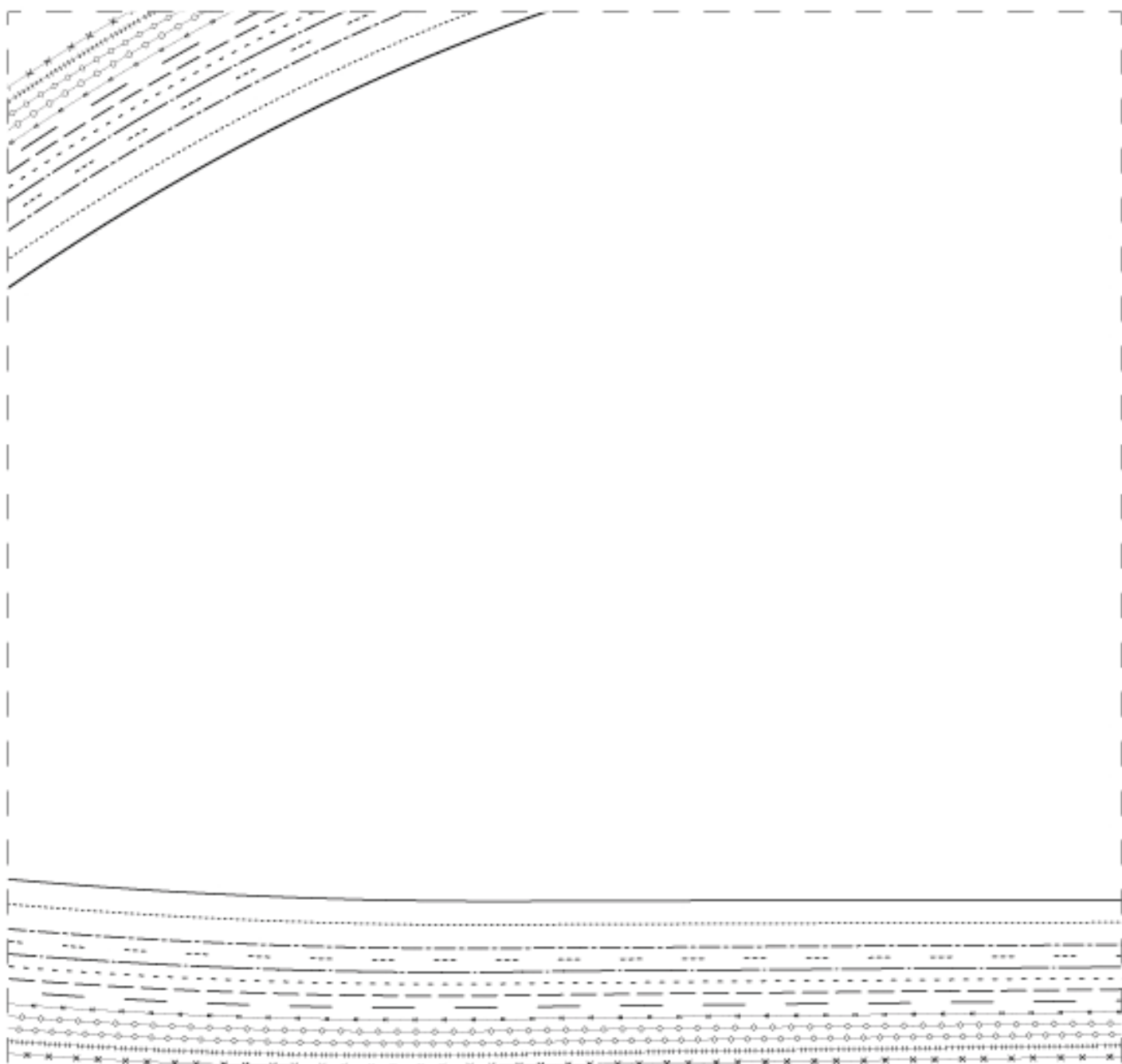


**1083**  
BONNE EN FRANCE

**3**

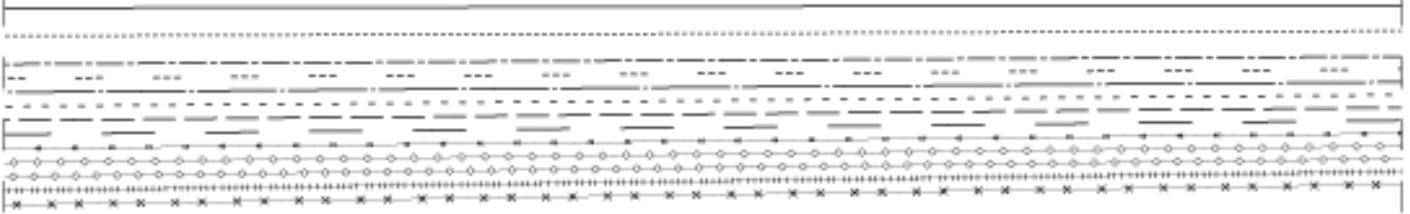
**101BRU13**  
devant x l

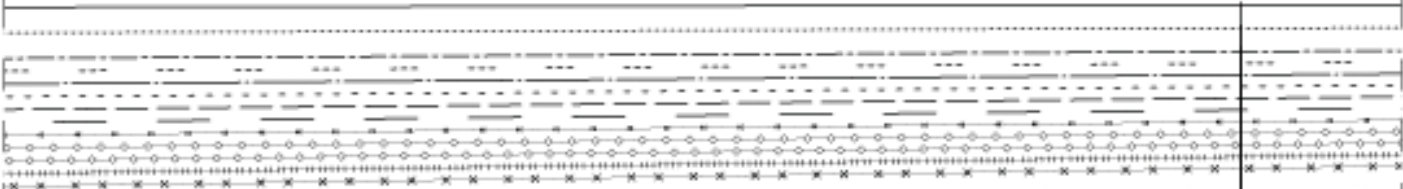




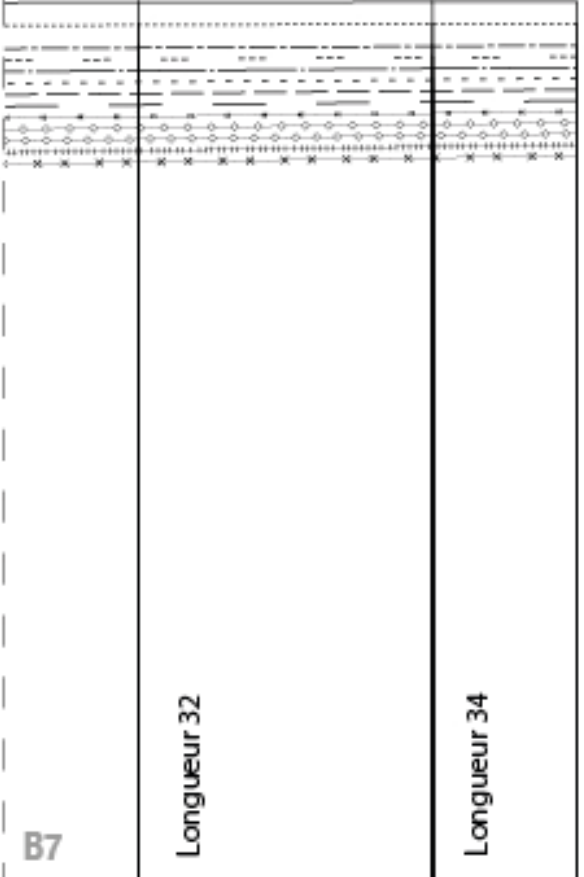
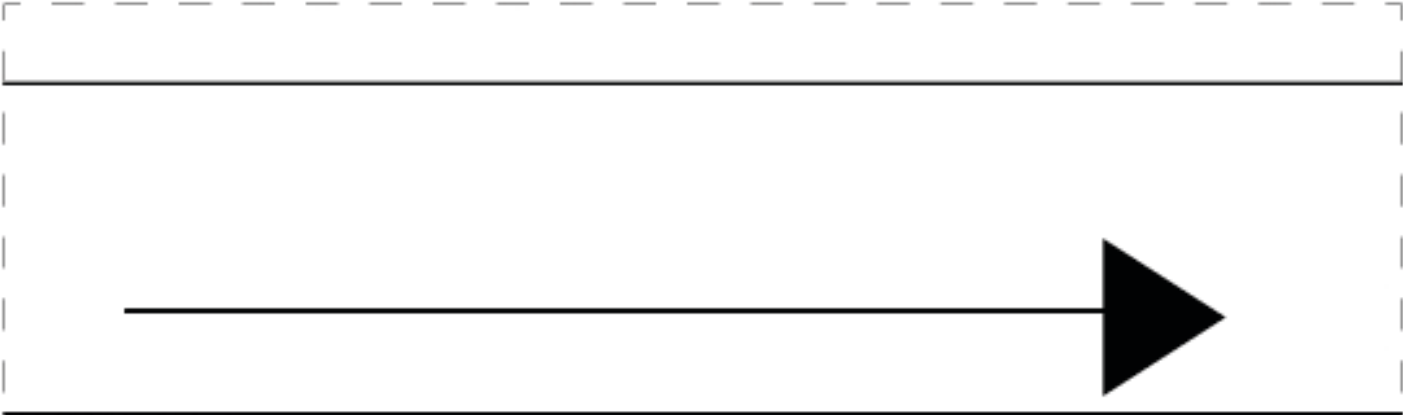


40	
38	
36	
35	
34	
33	
32	
31	
30	
29	
28	
27	
26	





Longueur 30



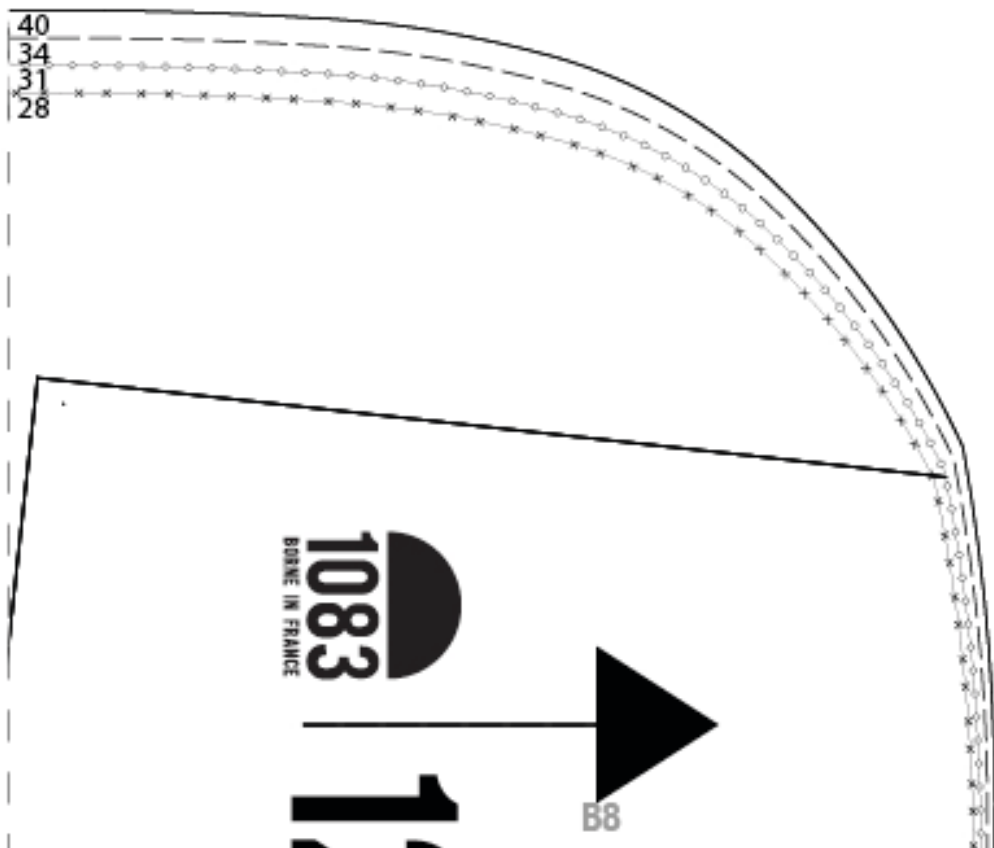
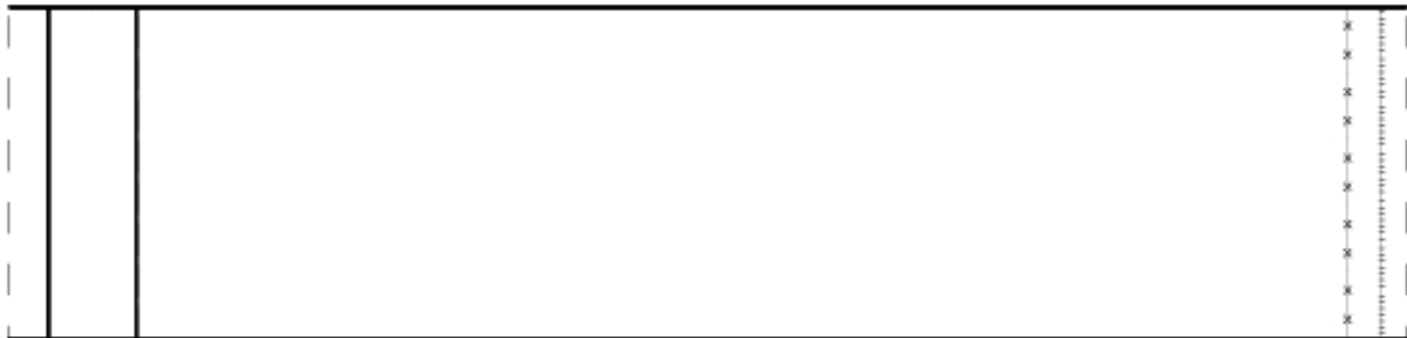
B7

Longueur 32

Longueur 34

Longueur 36

Côté droit



7

101BRU13

ceinture x 1

1083  
BONNE EN FRANCE



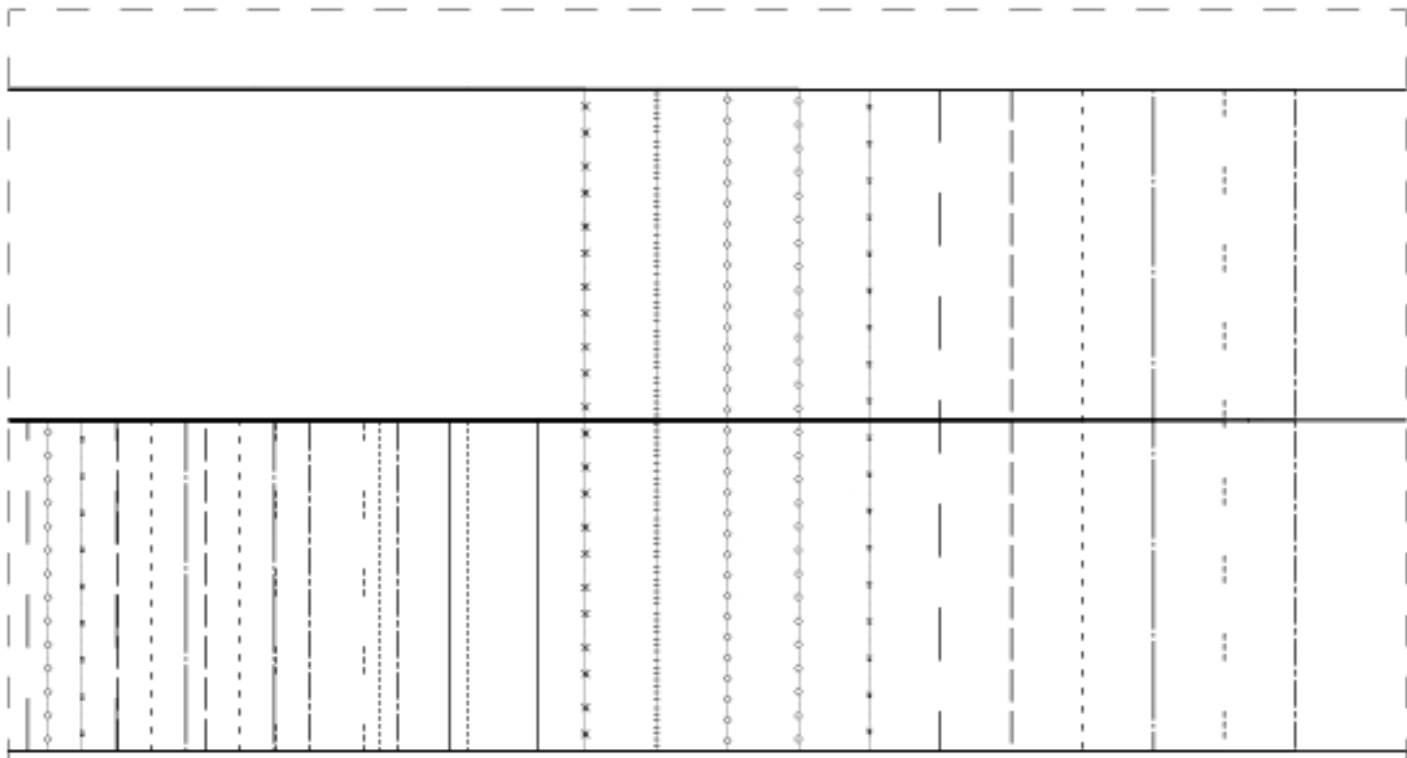
35 à 40

32 à 34

29 à 31

26 à 28

1083  
BONNE EN FRANCE



A trapezoidal graphic representing a ticket stub. It features a logo with a semi-circle and the number '1083', the text 'BORNE IN FRANCE', a large number '6', the code '101BRU13', and the text 'poche ticket x 1'. On the right side, there are four lines of numbers: '35 à 40', '32 à 34', '29 à 31', and '26 à 28'. A large black arrow points to the left from the '6'.

  
1083  
BORNE IN FRANCE

6

101BRU13

poche ticket x 1

35 à 40

32 à 34

29 à 31

26 à 28



## **101BRU13** : Jeans homme coupe droite

### **MATÉRIAUX :**

Denim pour le pantalon et satin de coton pour les fonds de poche.

### **TAILLES AMÉRICAINES :**

largeur du 26 au 40 et longueur du 30 au 36.

### **ACCESSOIRES :**

6 Rivets en inox 10 mm

4 boutons en inox 14 mm

1 bouton inox gravé laqué rouge 17mm

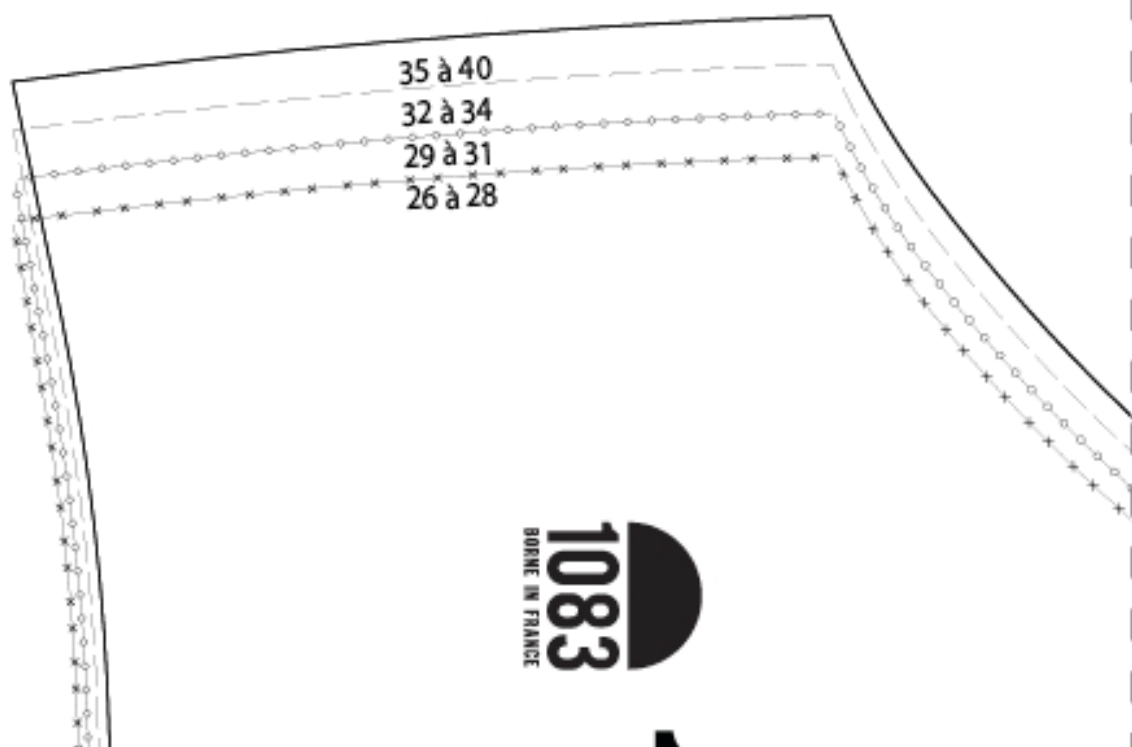
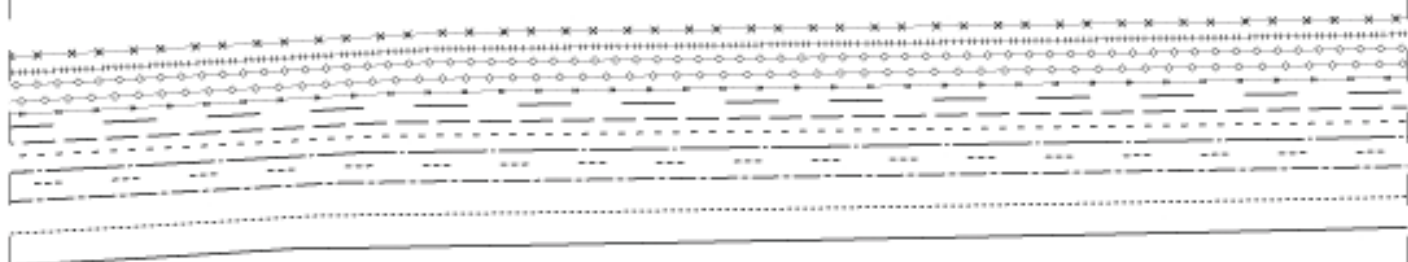
Biais rouge 30 mm ( finition intérieure braguette et ceinture)

1 jacron Cuir

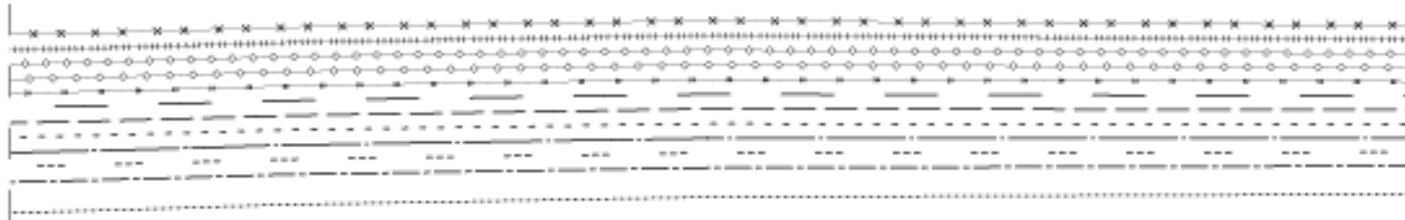


C2

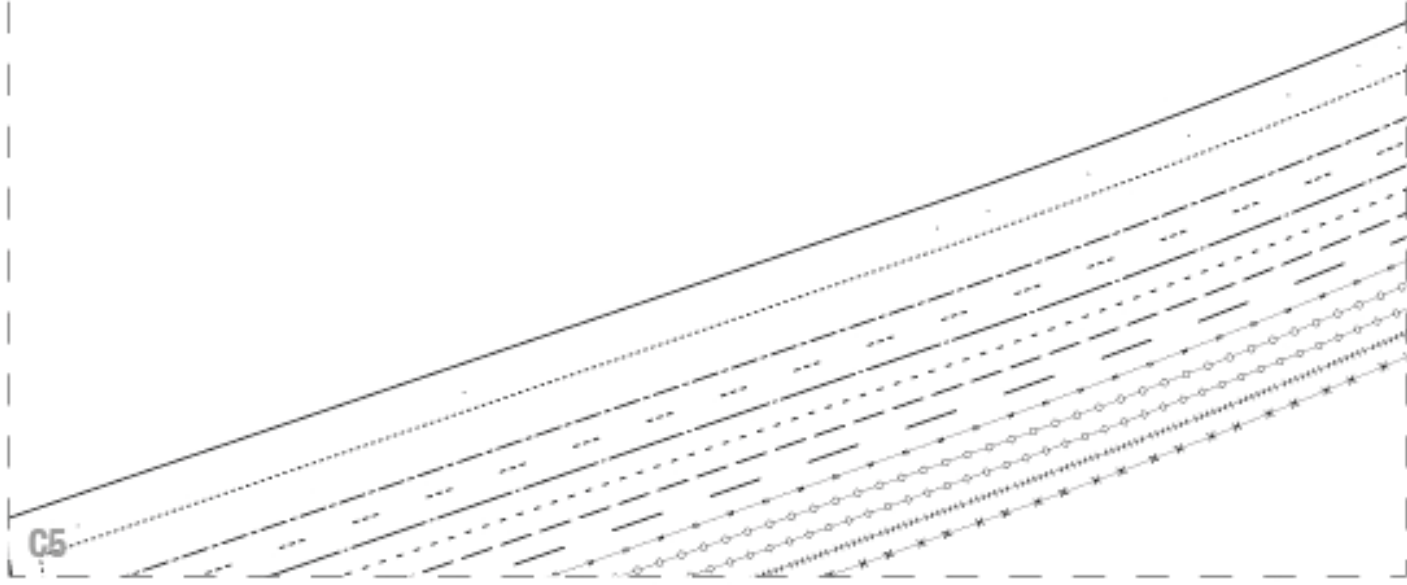
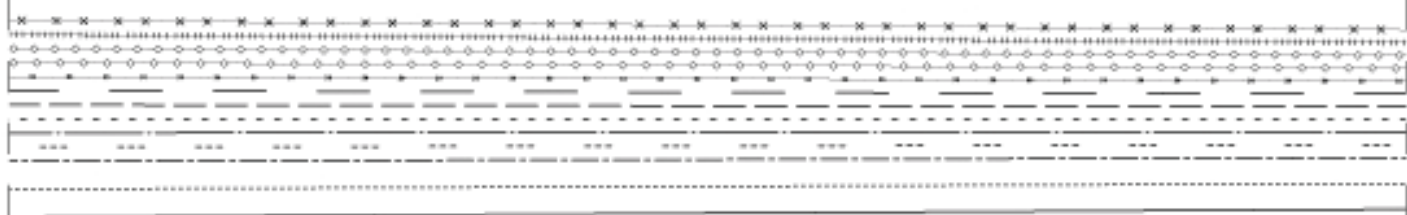




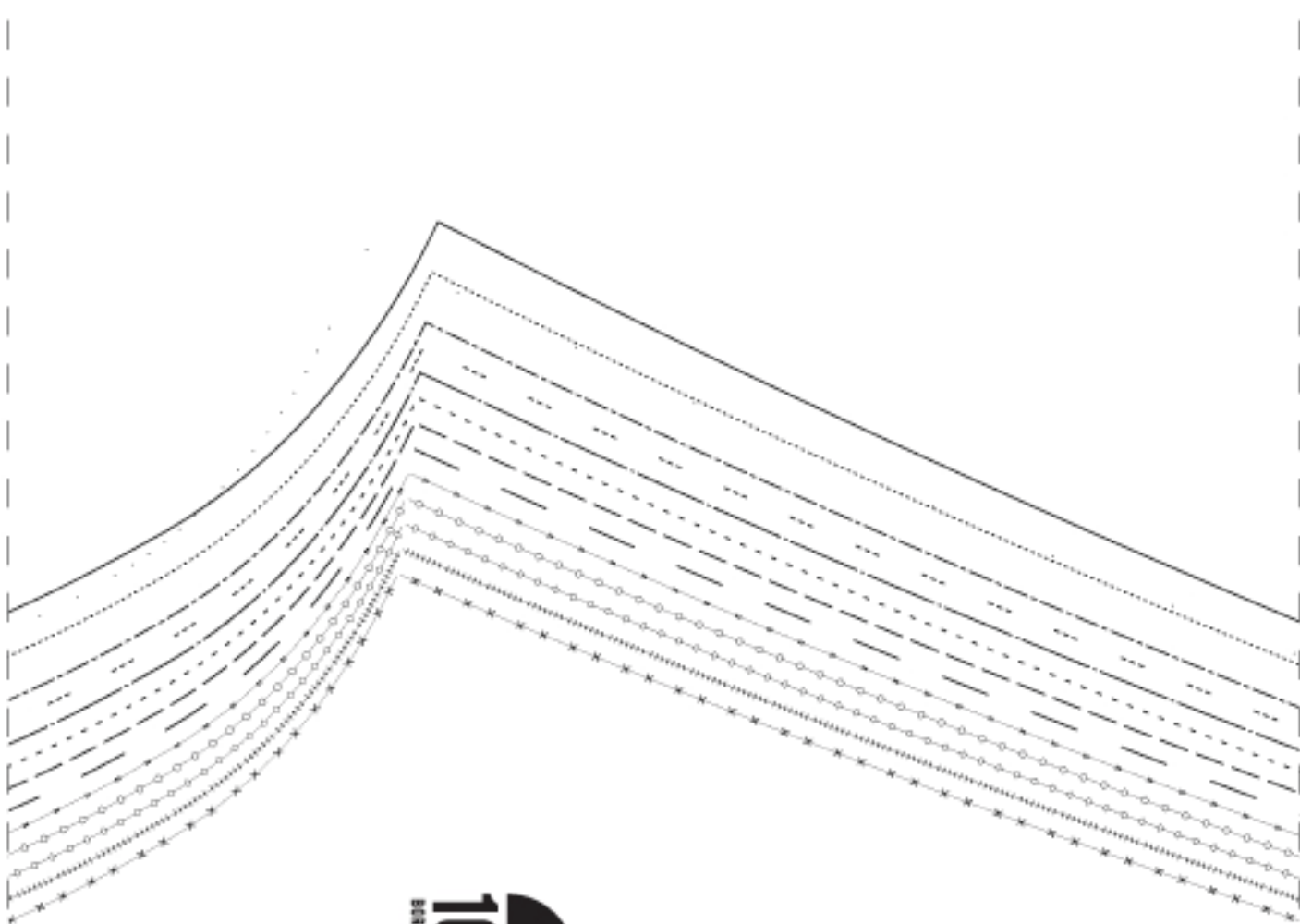
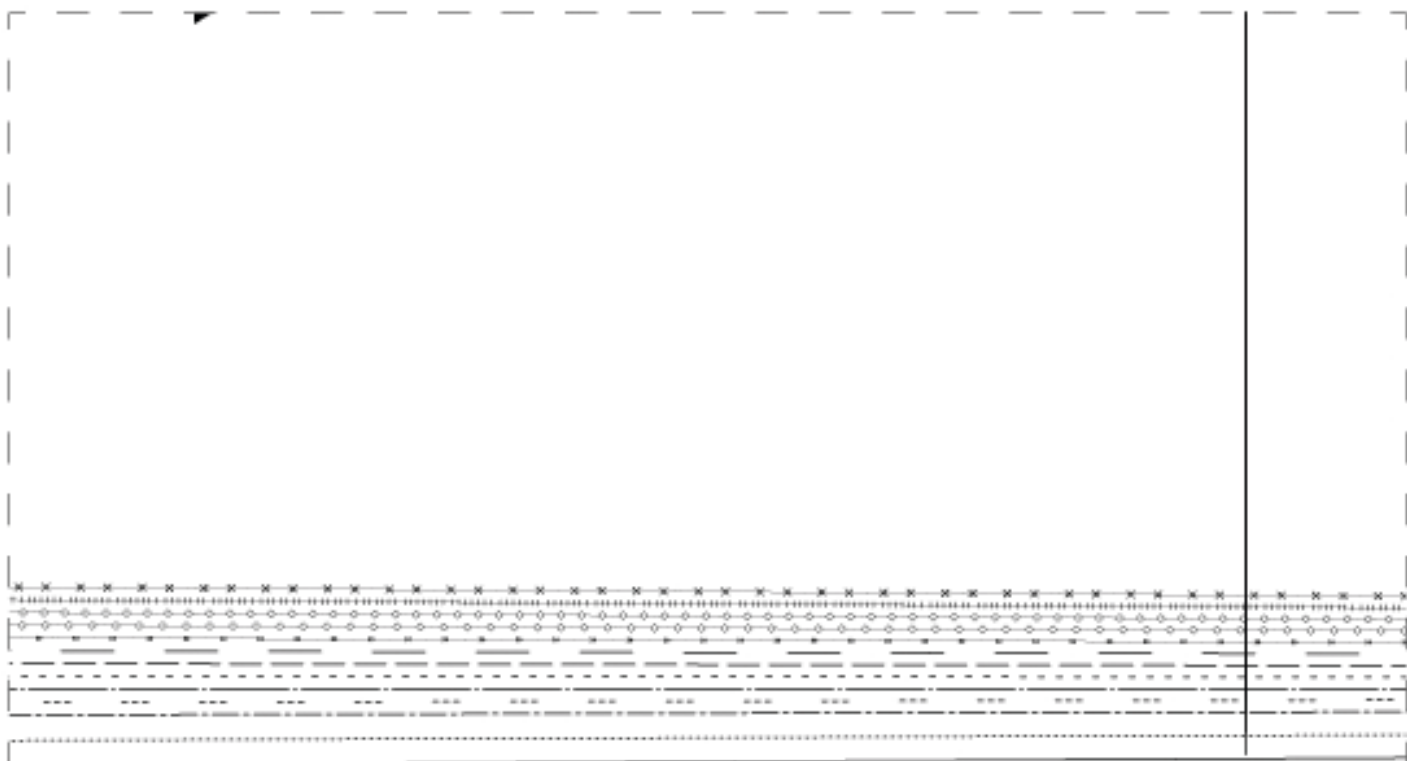
**1083**  
BORNE IN FRANCE



C4



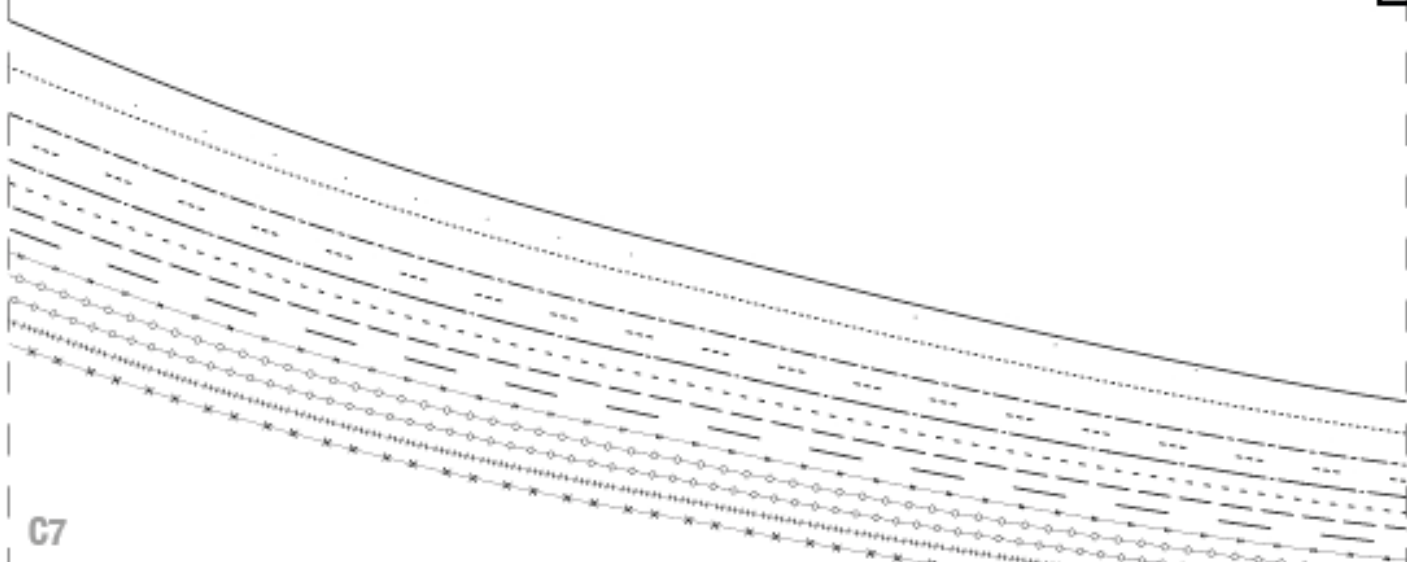
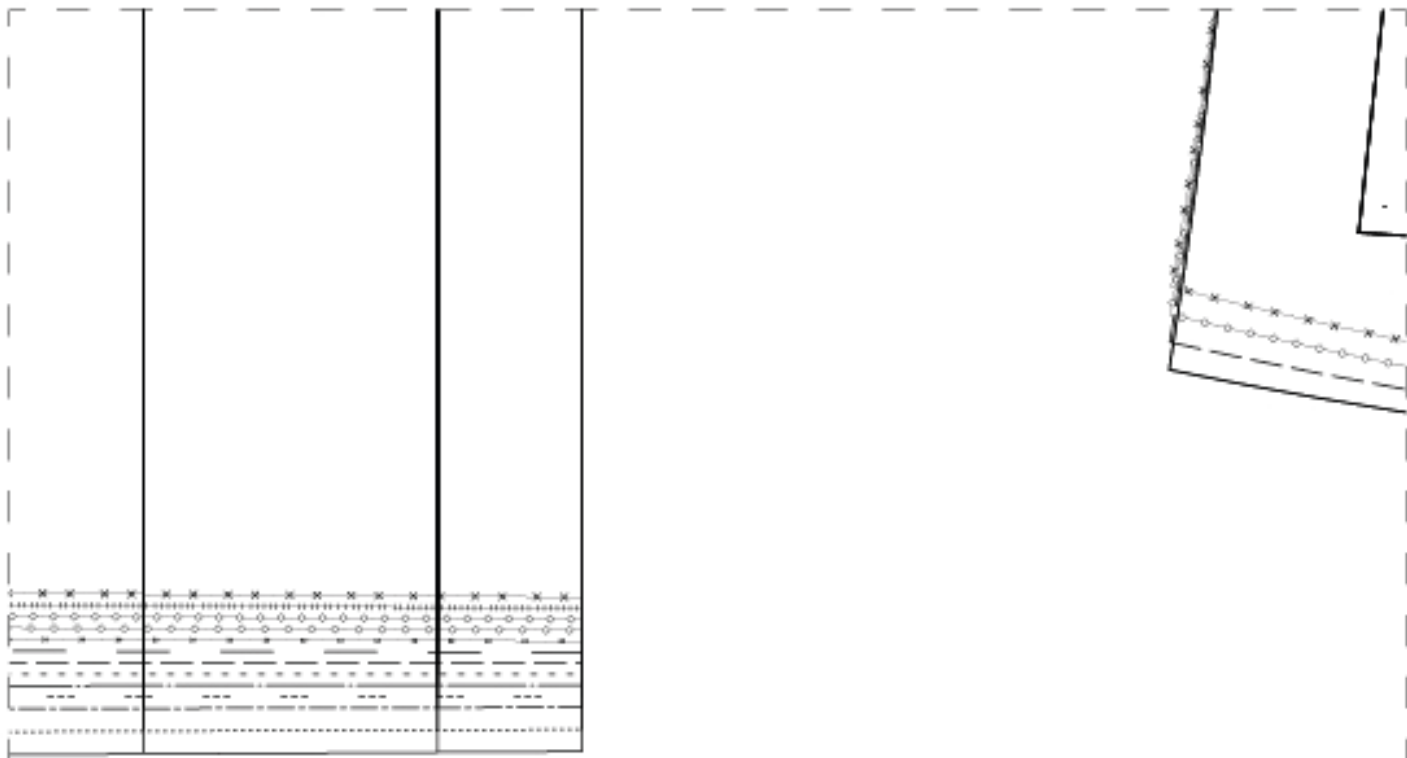
C5



**1083**  
BONNE IN FRANCE

**1**

C6

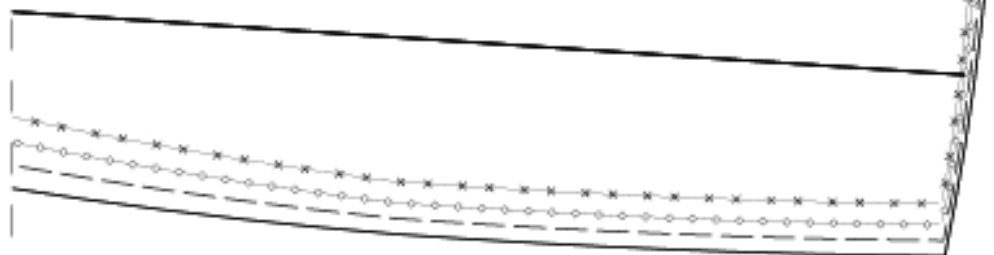


C7

# 2

## 101BRU13

contre poche x2



BOUNE IN FRANCE  
**1083**

# 14

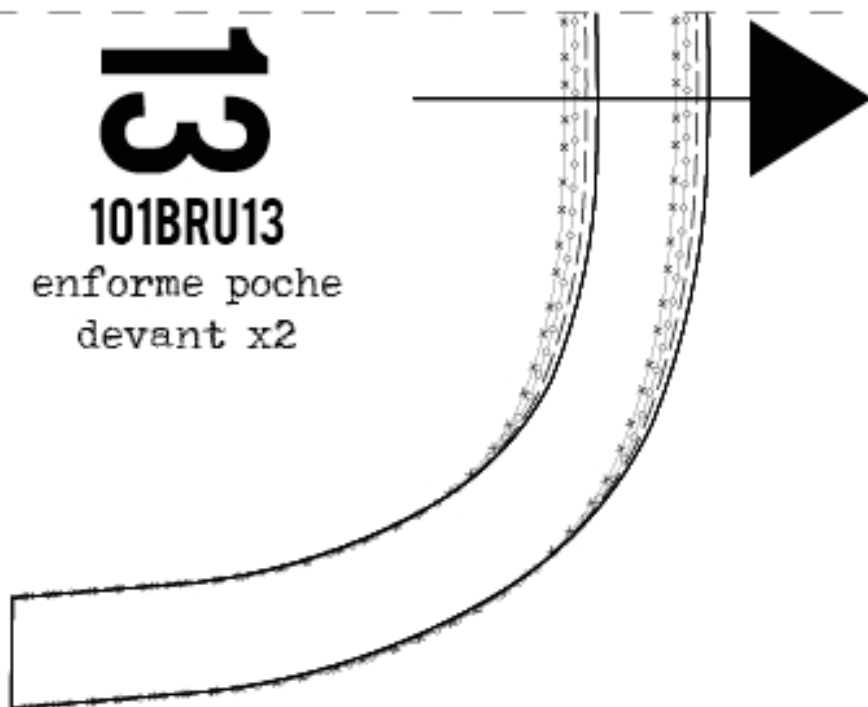
## 101BRU13

bande 5 passants  
de 9,5cm

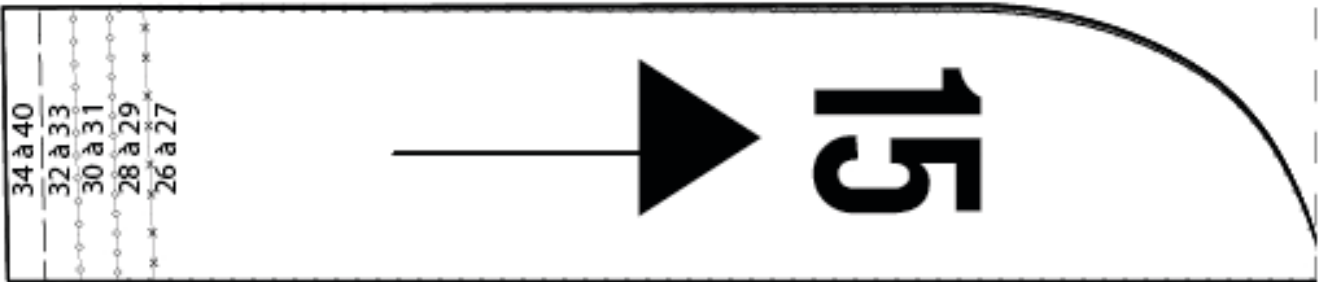
# 13

101BRU13

enforme poche  
devant x2



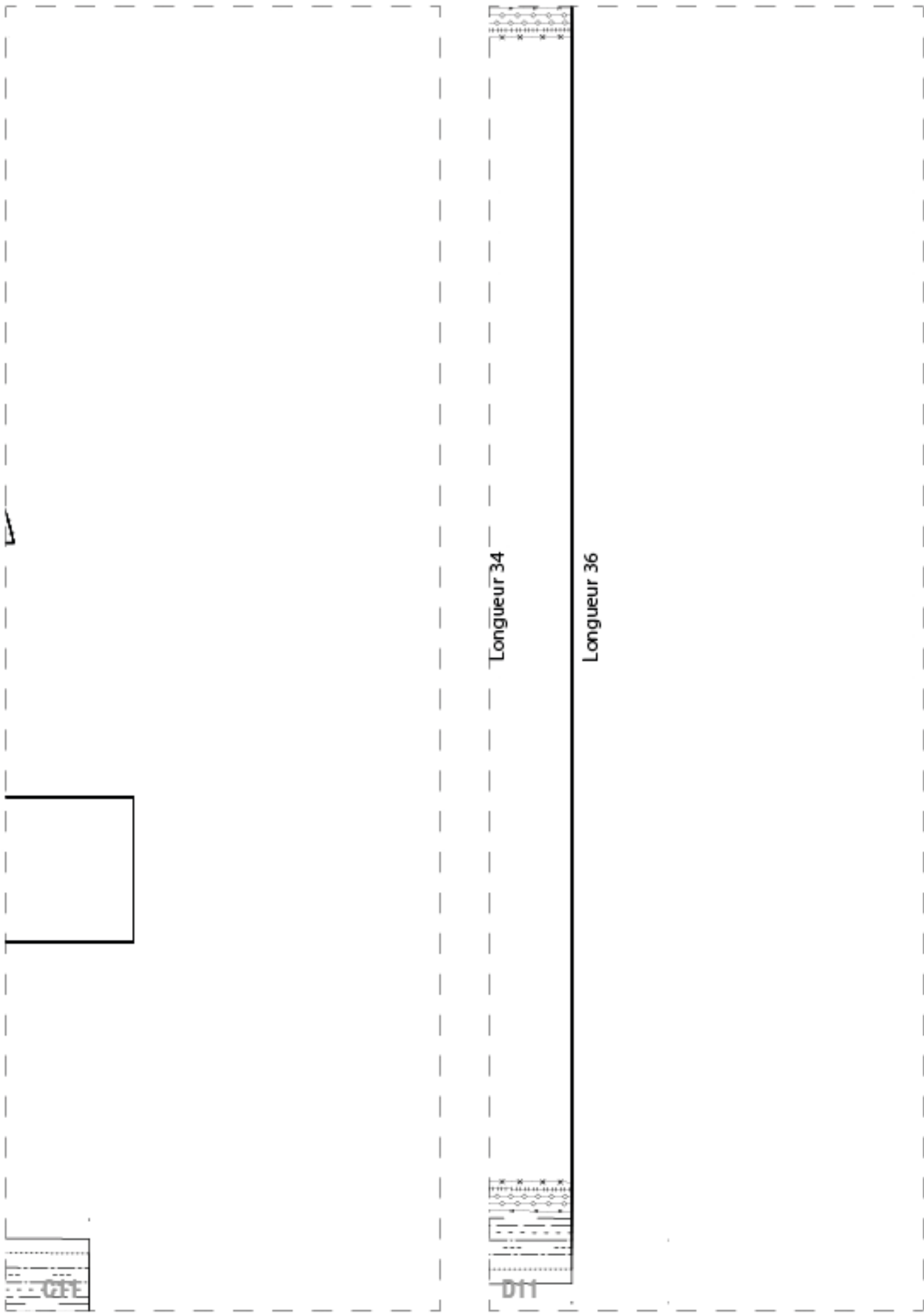
1083  
MADE IN FRANCE



**101BRU13**  
gabarit surpique  
braguette xl







**PATRON :**

1-Braguette 4 boutons de 14 mm, ouverture milieu devant de 190 mm.

2-Passants remplis, surpiqués et plaqués.

3-Ceinture coulissée, assemblée en surpiqûre tout le tour à 2mm. Finition bord intérieur biais. Surpiqûre décorative à 20 mm du bord haut. Fermeture milieu devant avec un bouton de 17 mm.

4- Poches cavalières : découpe assemblée avec contre poche, surpiquées à 2 mm et 7 mm. Assemblage du fond de poche avec contre poche. Renfort des angles hauts avec rivets de 10 mm.

5-Poche à gousset : haut de poche ourlé en surpiqûre double à 3 mm et 7 mm. Surfilée, plaquée en surpiqûre double à 1 mm et 7 mm. Renfort des angles hauts avec rivets de 10 mm.

6-Bas du pantalon : ourlé à 10 mm.

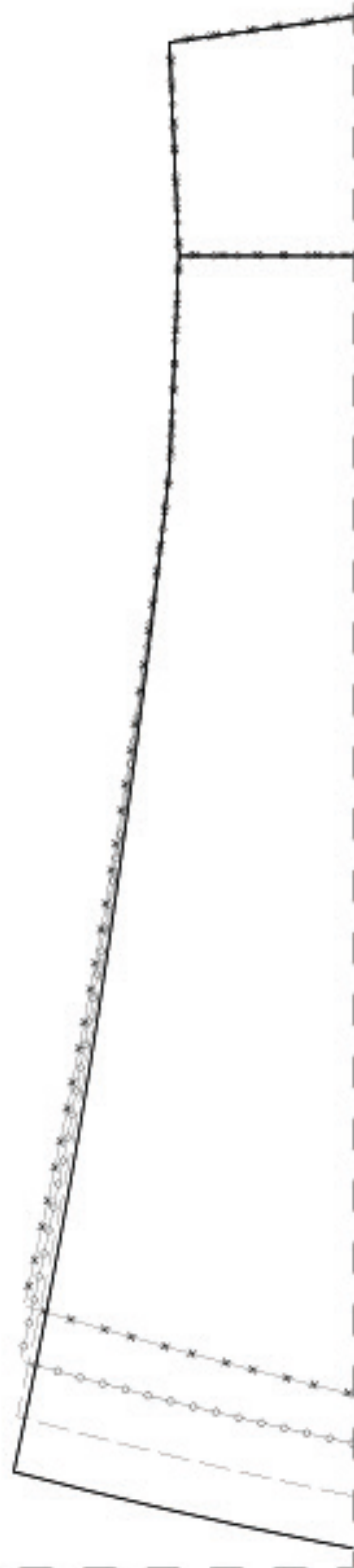
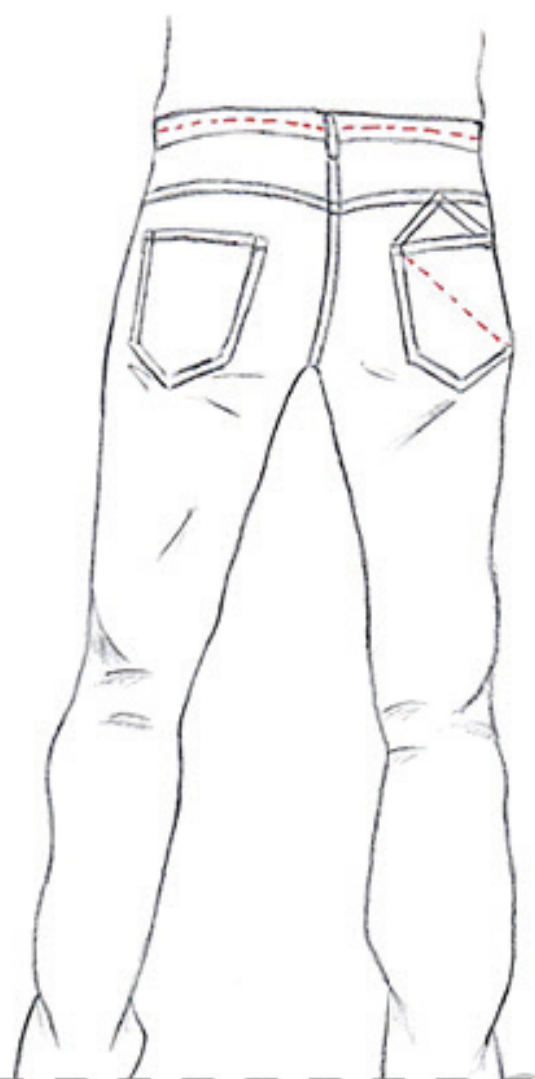
7-Entrejambe et cotés intérieurs assemblés et remplis en surpiqûre double à 1 mm et 7 mm.

8-Côtés extérieurs assemblés à 12 mm, surfilés coutures ouvertes Surpiqûre à 1 mm sur 200 mm (taillebassin) coutures couchées vers le dos.

9-Poches plaquées : Haut des poches ourlé en surpiqûre double à 3 mm et 7 mm. Les poches sont plaquées en surpiqûre double à 1 mm et 7 mm.



**1083**

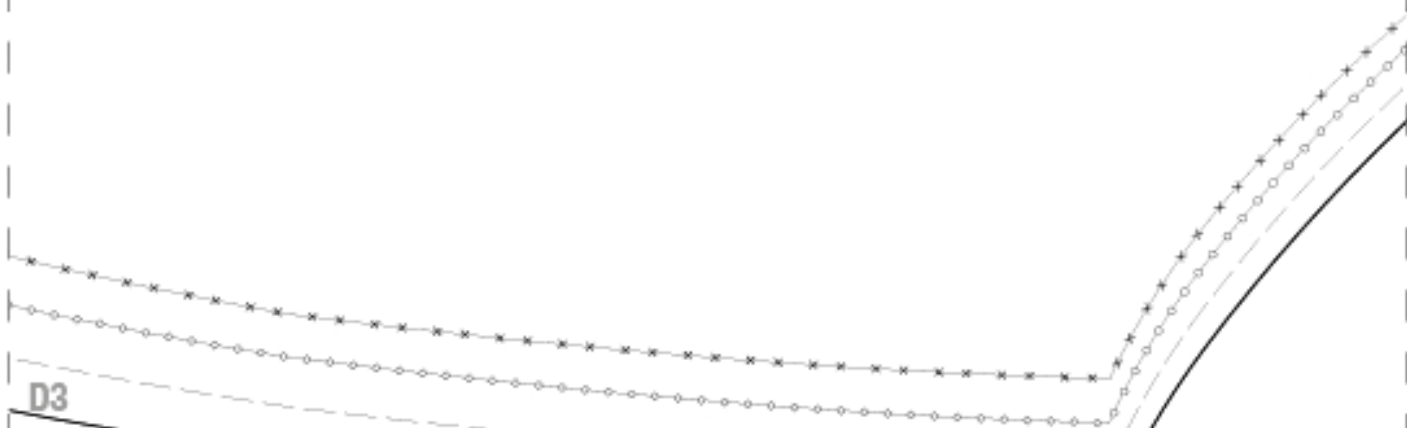
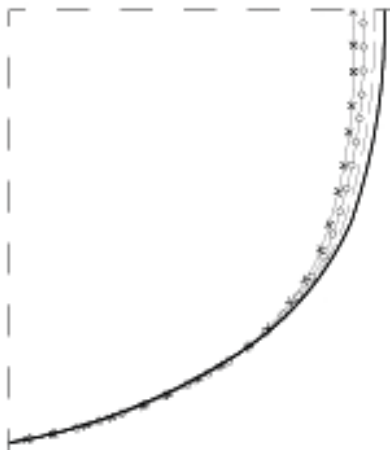


D2

# 10

## 101BRU13

fond poche x2 dbl



D3

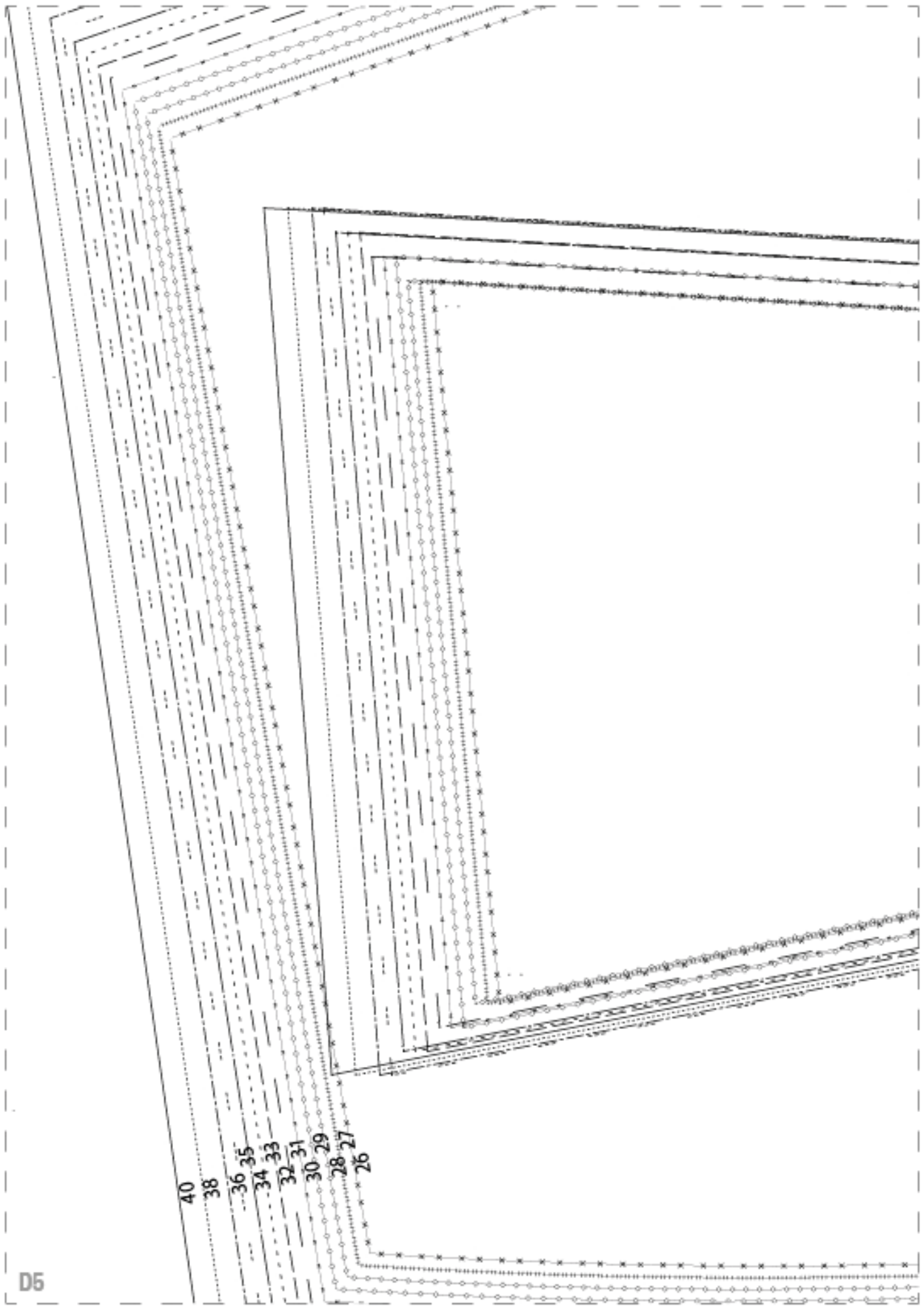


**11**

**101BRU13**  
rehausse x2



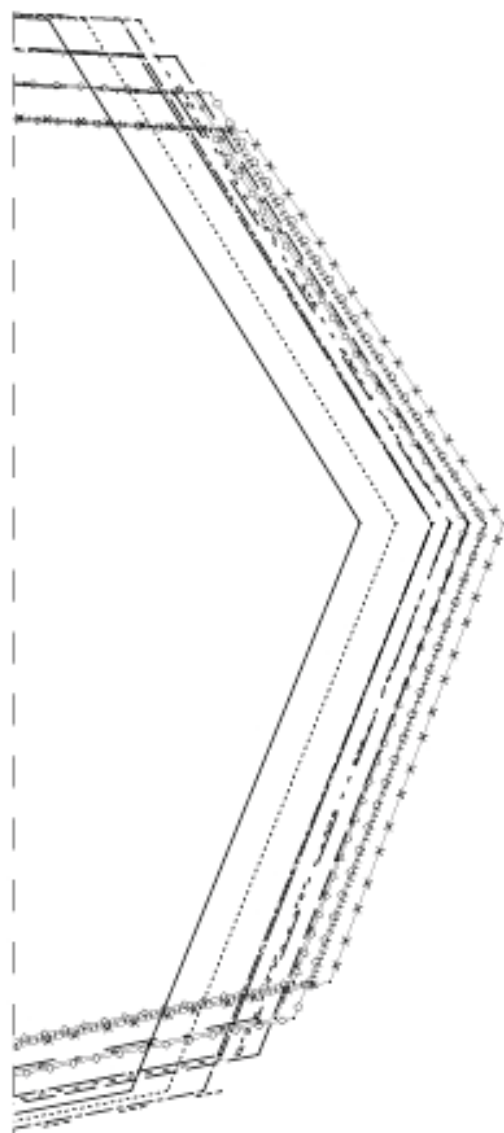
**1083**  
BOULEVARD DE FRANCE



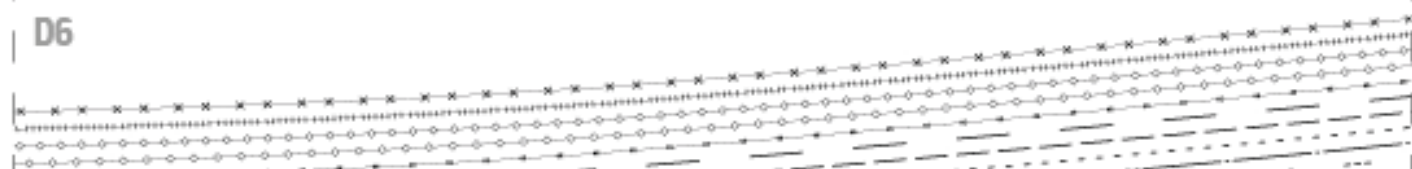
D5

**101BRU13**

dos x 2

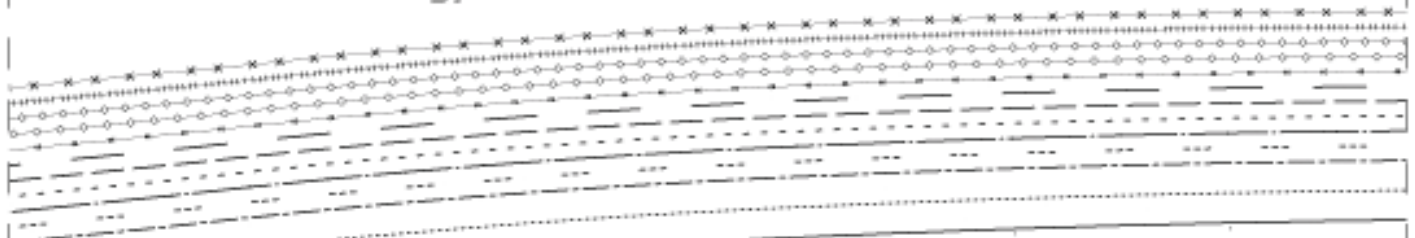


**D6**

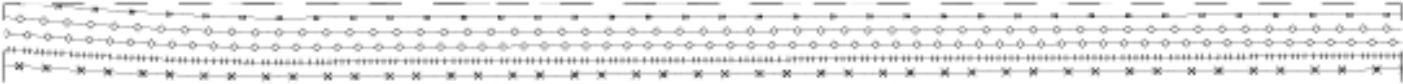




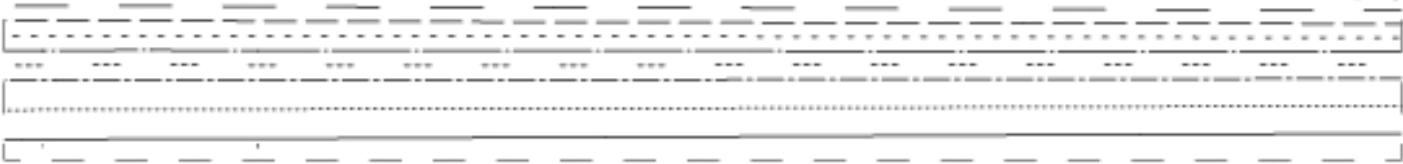
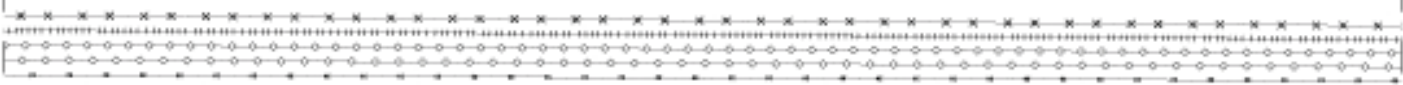
D7

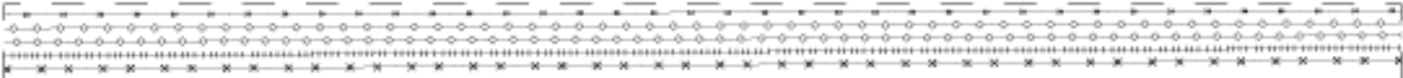




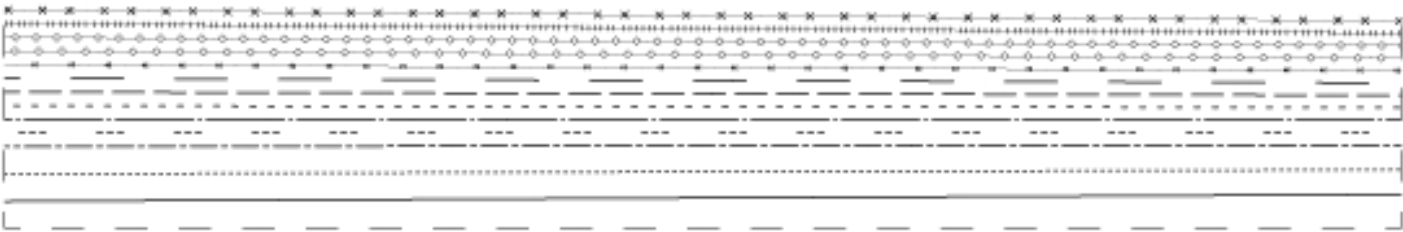


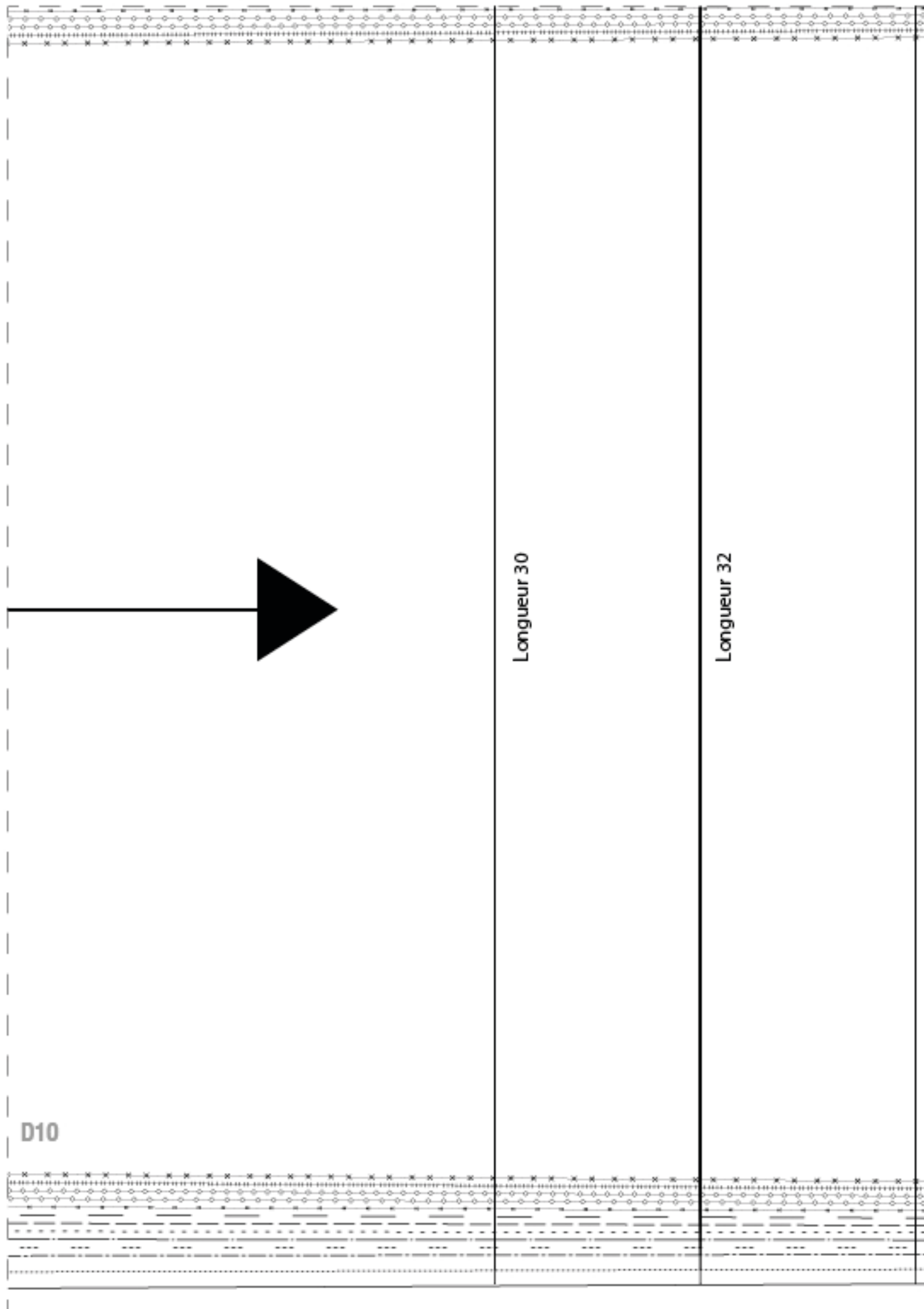
**D8**





D9





D10

Longueur 30

Longueur 32

## BORNE IN FRANCE

Patron jeans homme 101BRU13 de 1083 est mis à disposition selon les termes de  
Commons Attribution 3.0 France.

Les autorisations au-delà du champ de cette licence peuvent être obtenues à co

E1



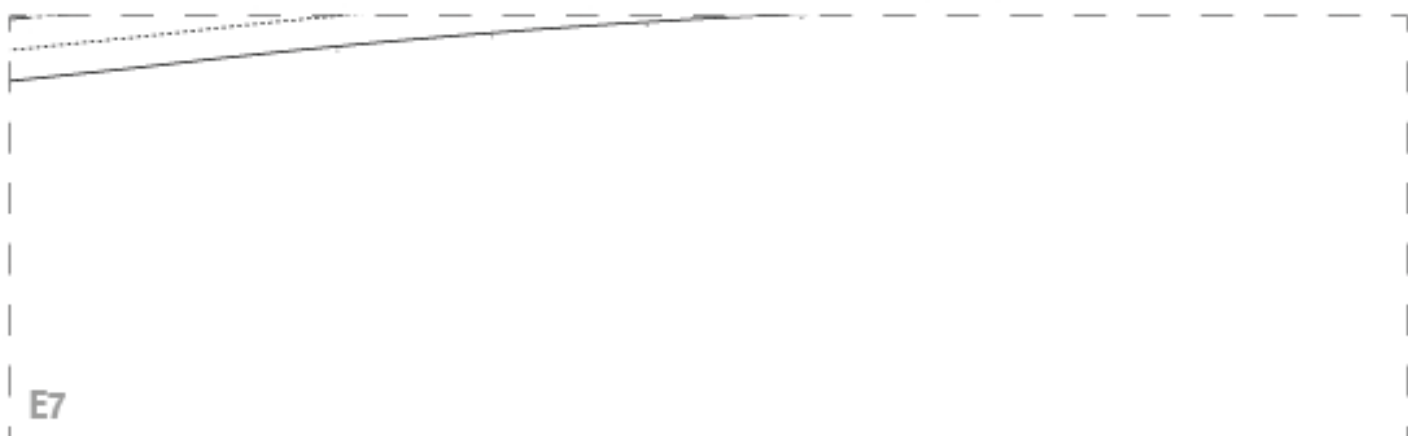
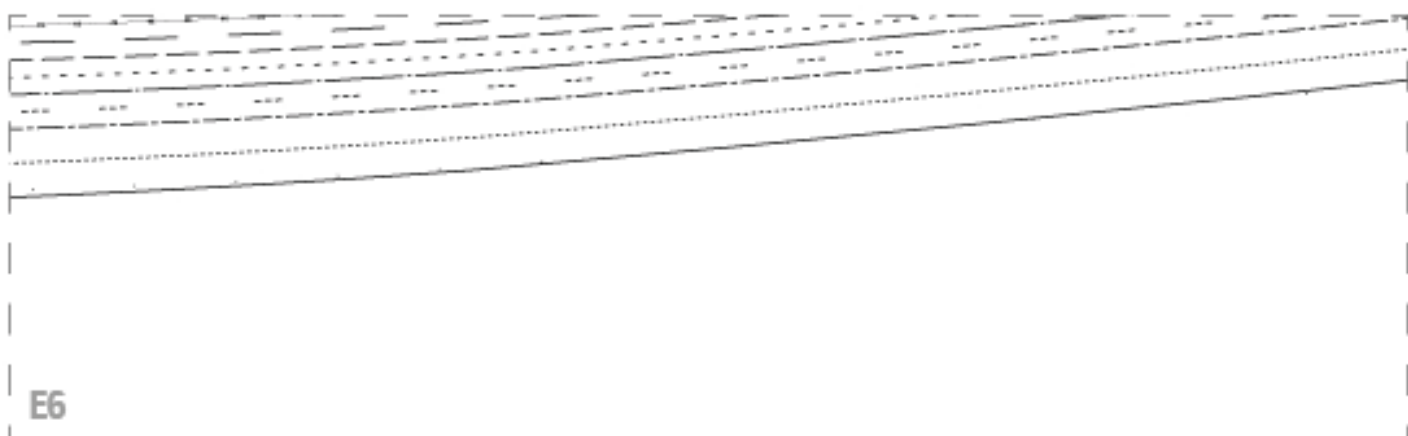
la licence Creative

ntact@1083.fr.

E2

E3

E4



E9

E10

E11

FIN