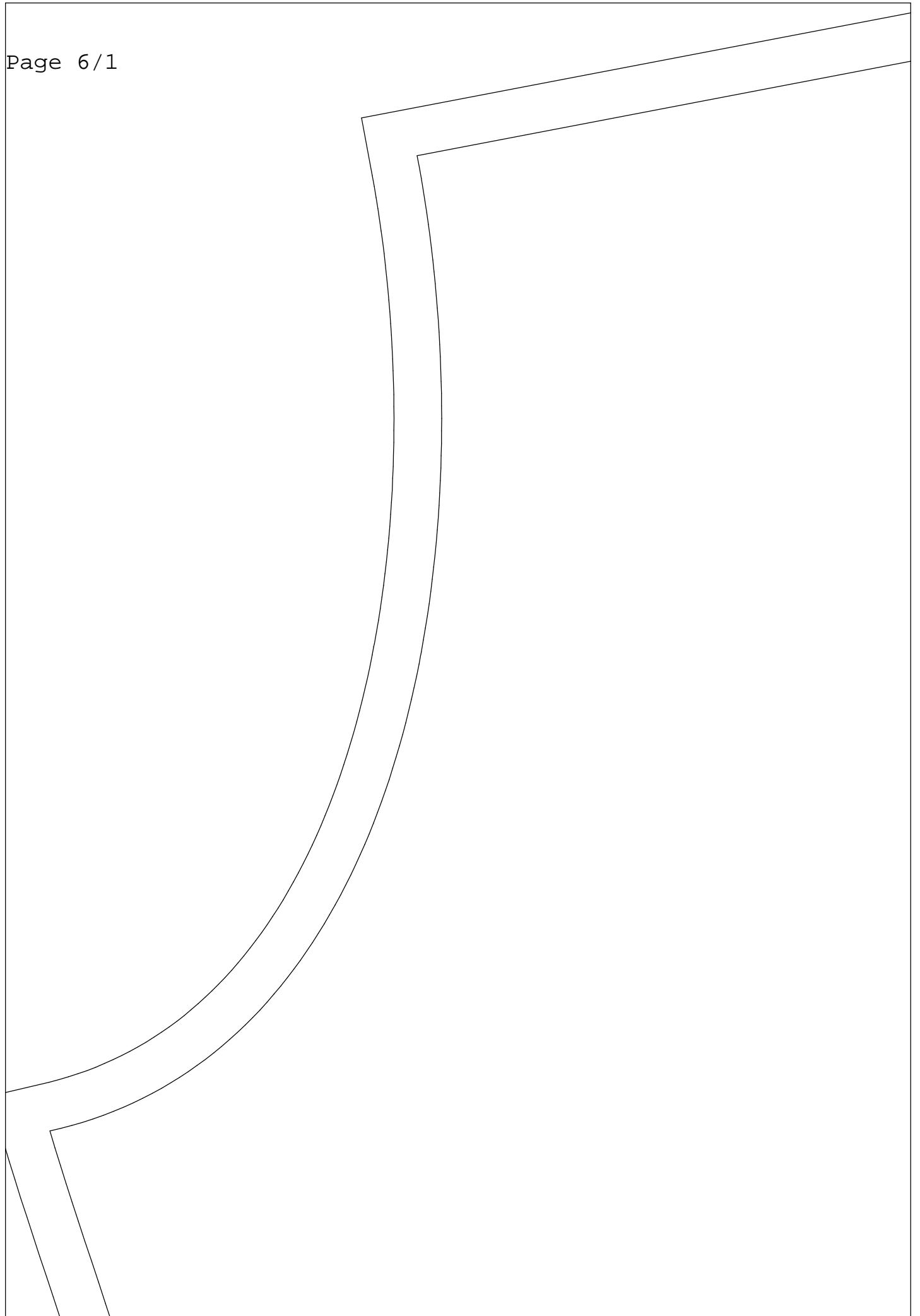


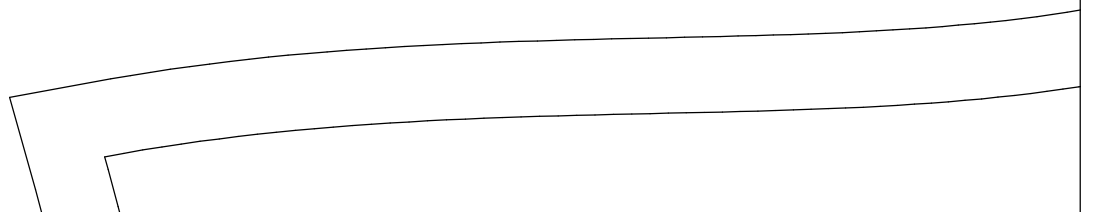
MANCHE

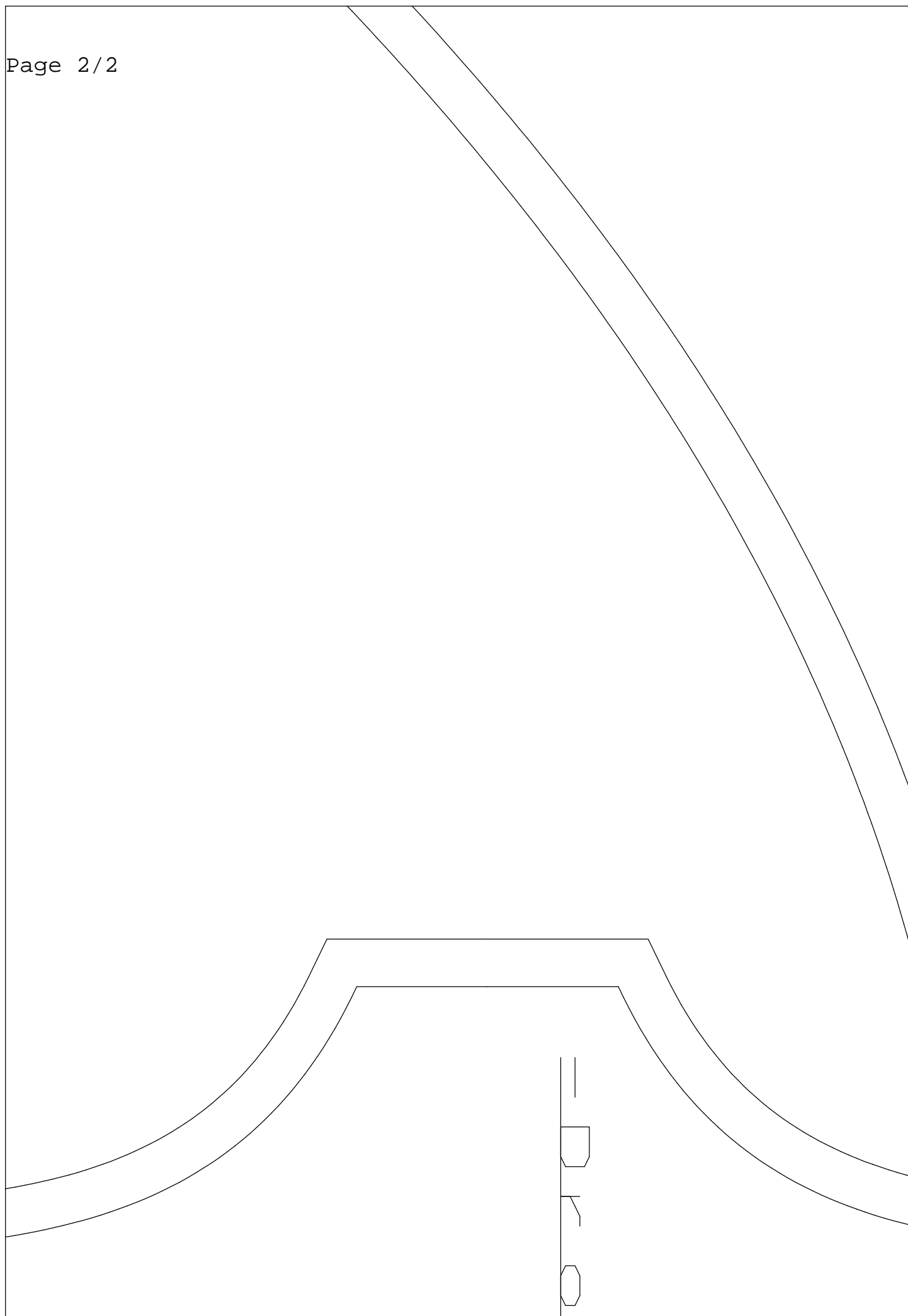
En TISSU, Surplus de couture=

zj=168-114-86-120



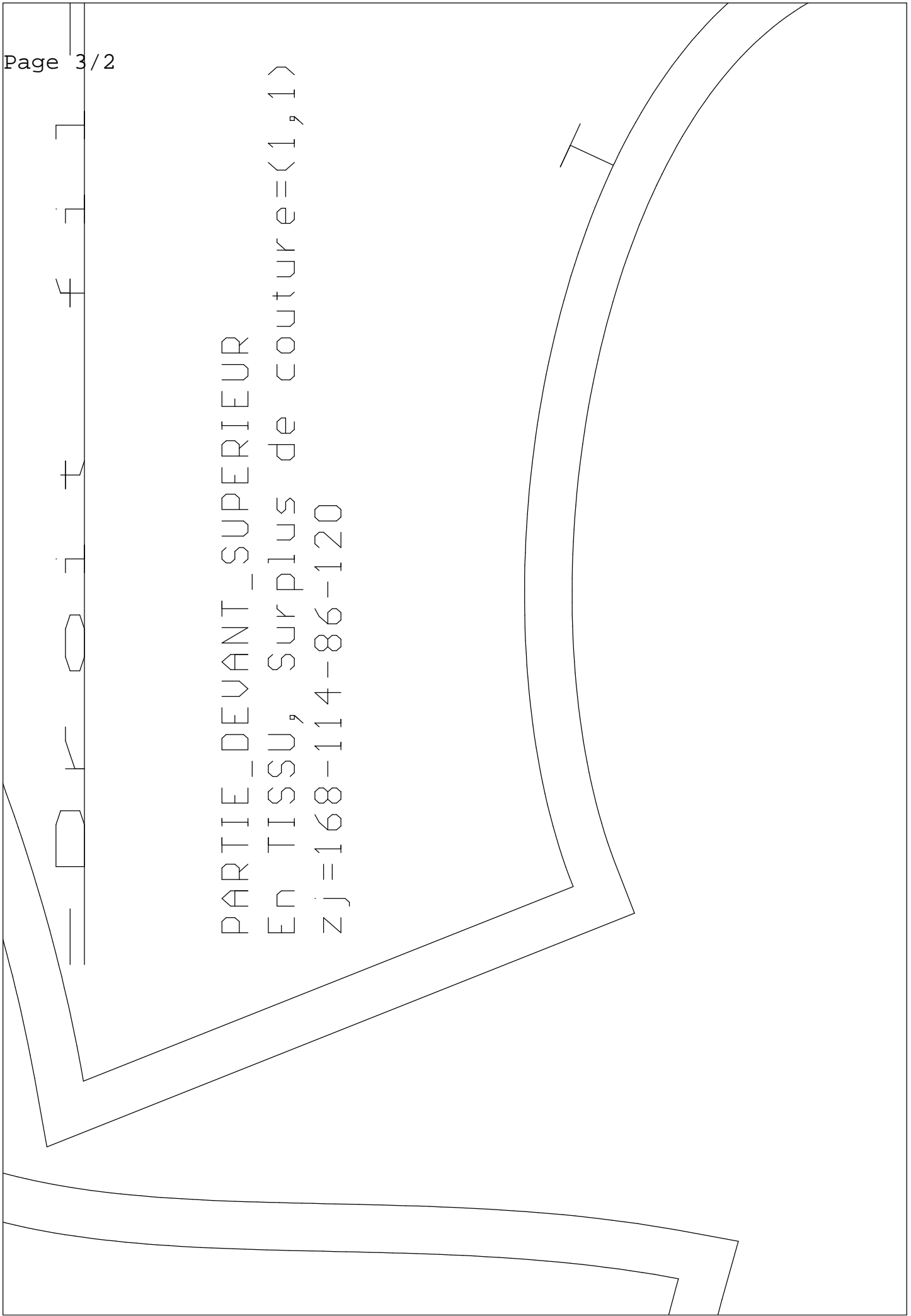


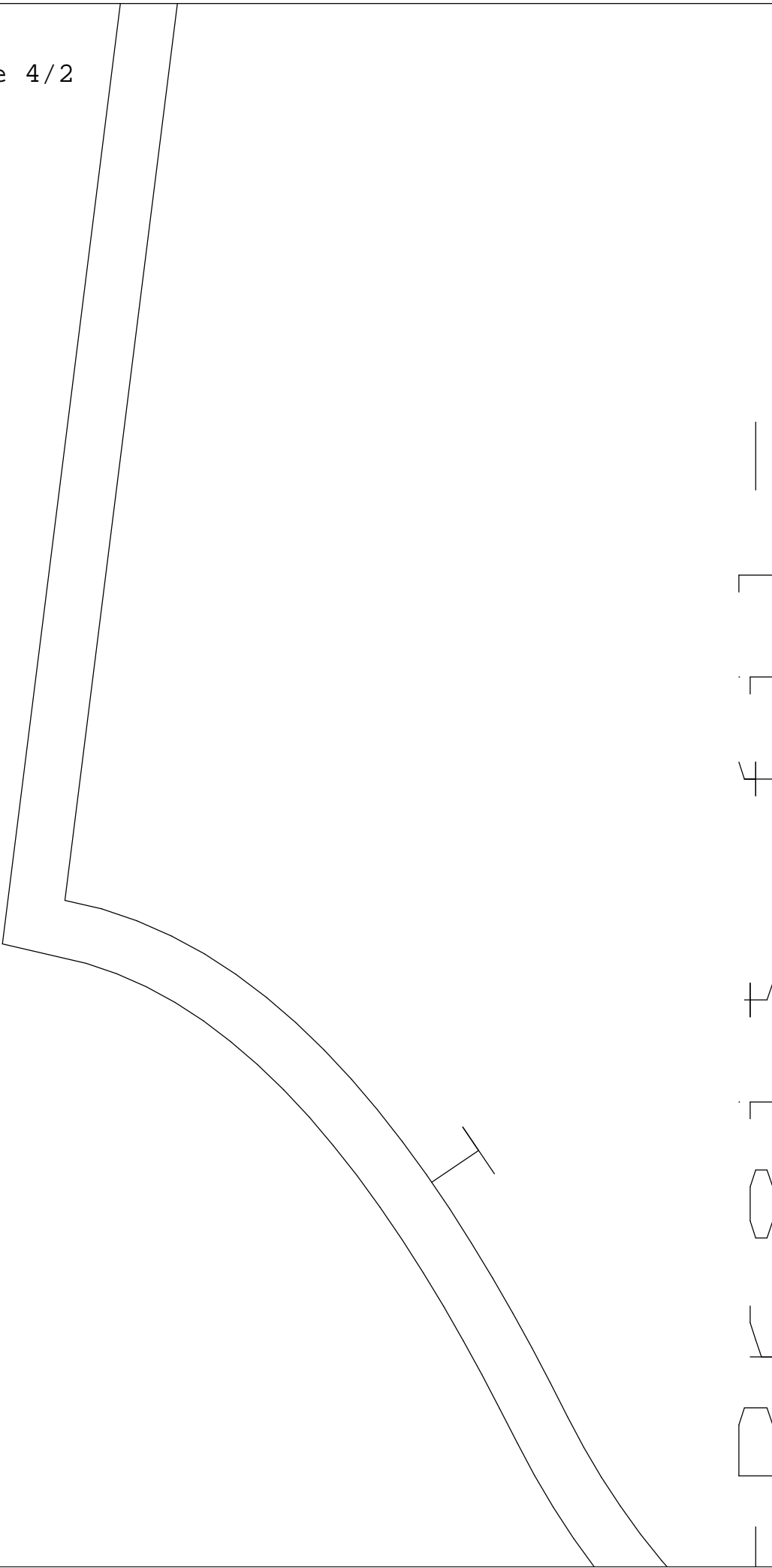


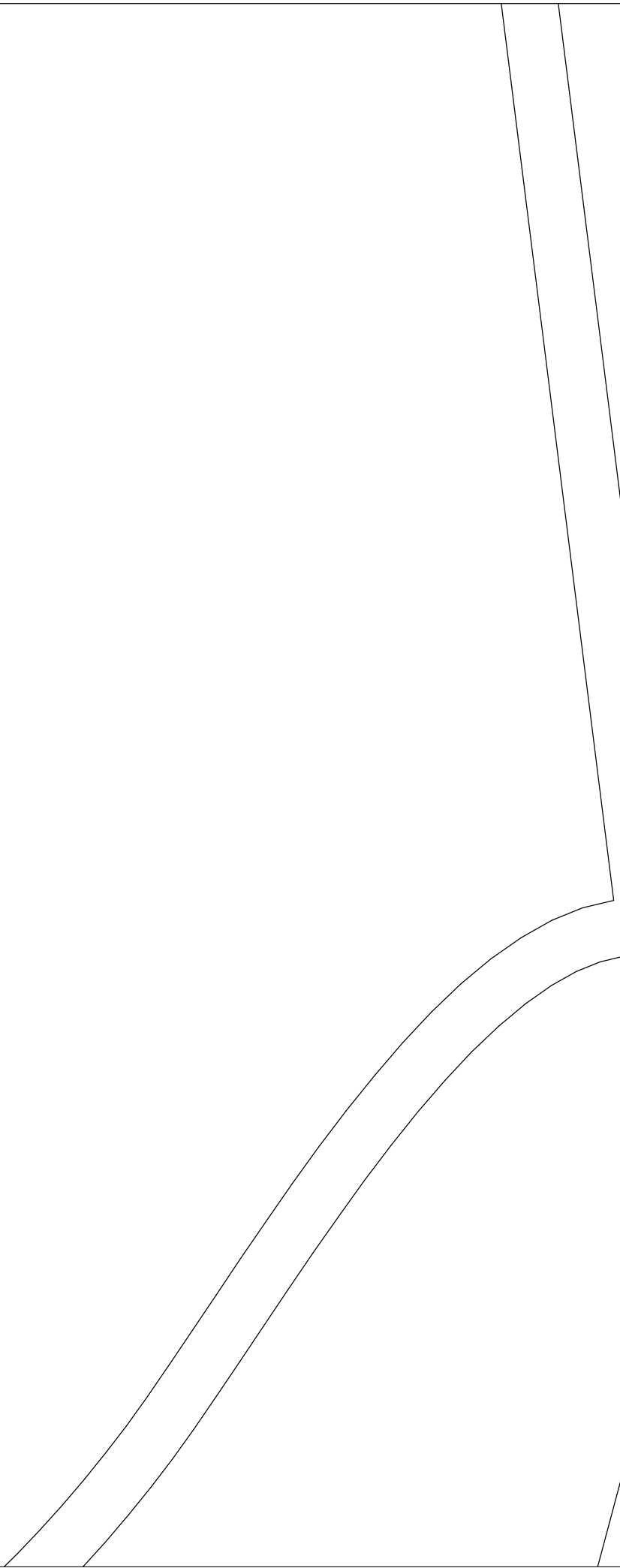




PARTIE_DEVANT_SUPERIEUR
EN TISSU, Surplus de couture=(1,1)
ZJ=168-114-86-120







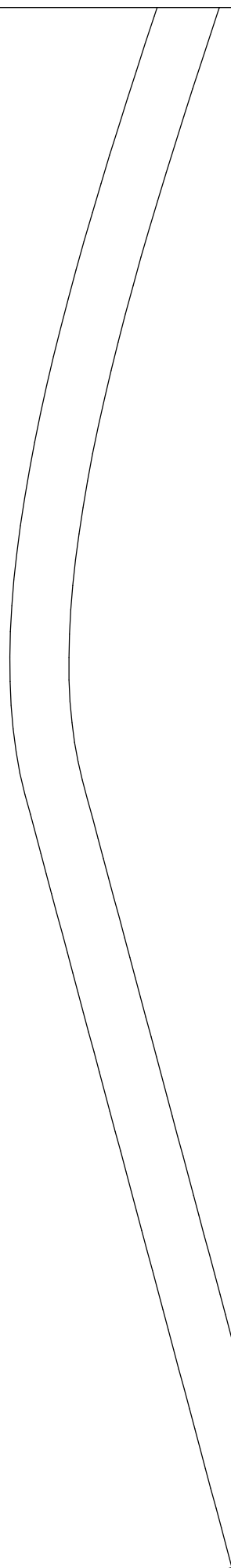
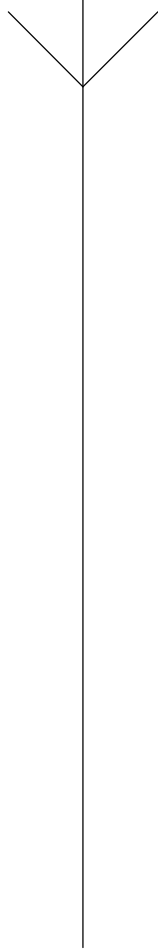
PARTIE_DOS

En TISSU,

zj=168-114-

Surplus de couture = $(1, 0)$

-86-120



PARTIE DE
En TISSU,
zj=168-11

AVANT_INFÉRIEURE

Surplus de couture = (1, 0)

4-86-120

