

PARTIE\_D

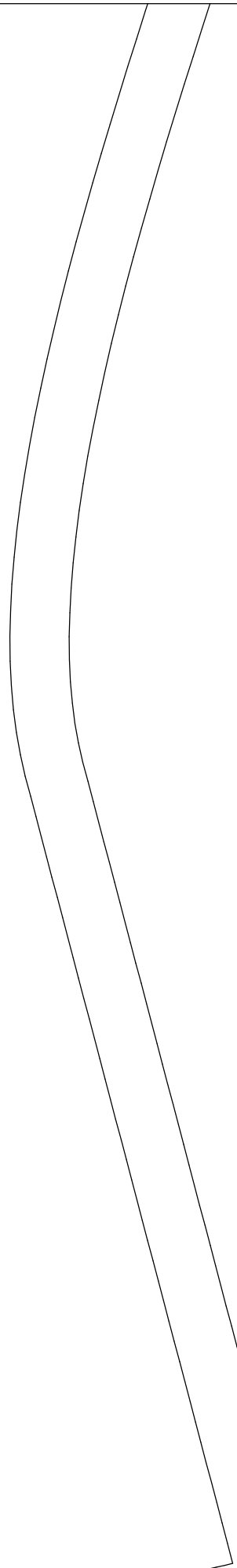
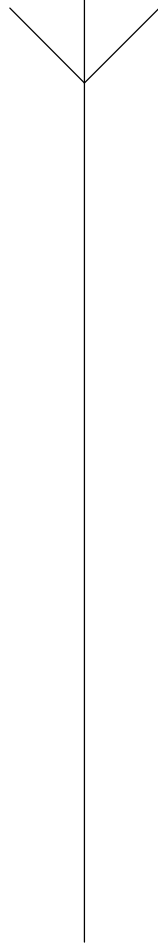
En TISSU

zj=168-1

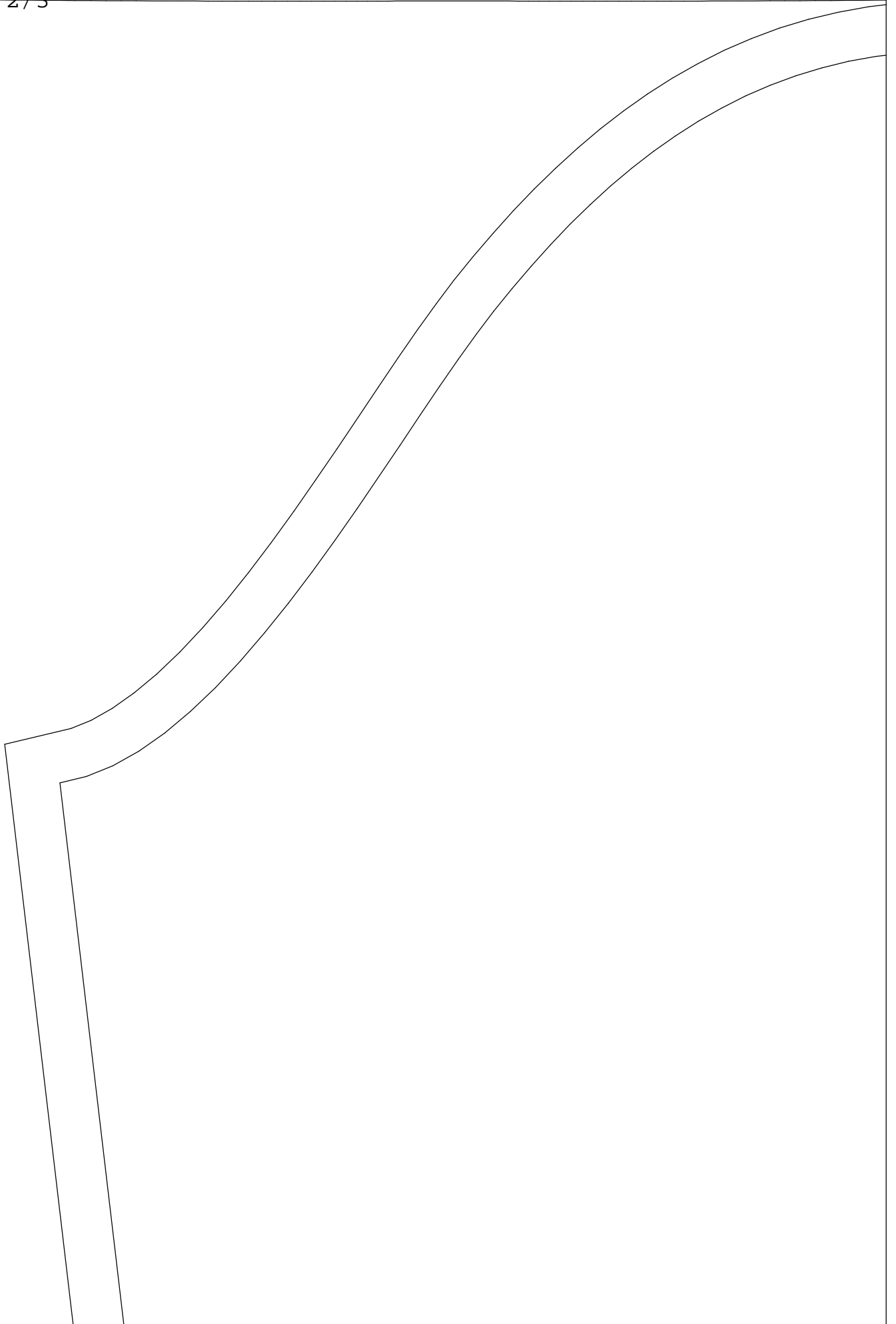
OS

, Surplus de couture= $(1, 0)$

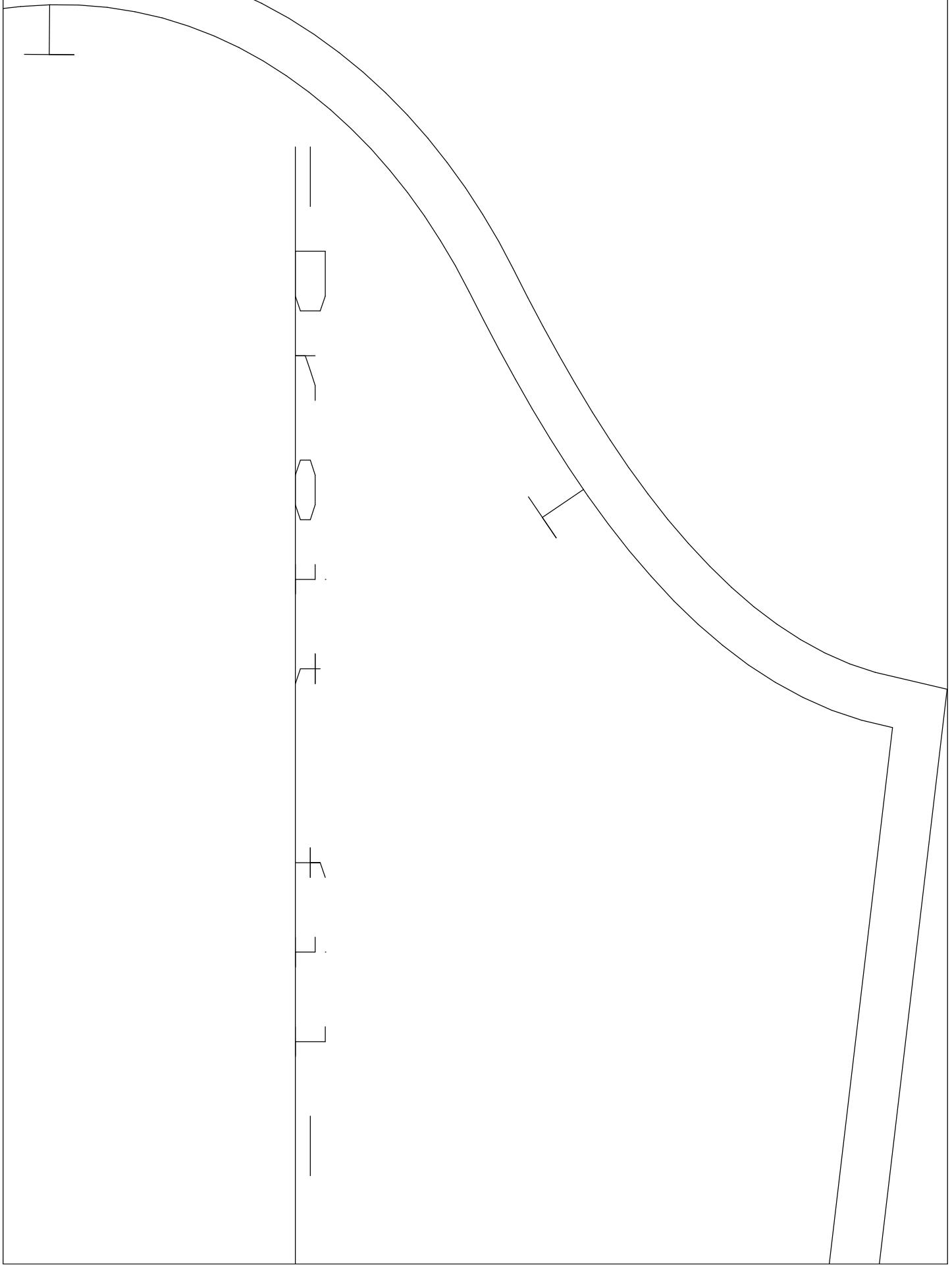
10-82-116

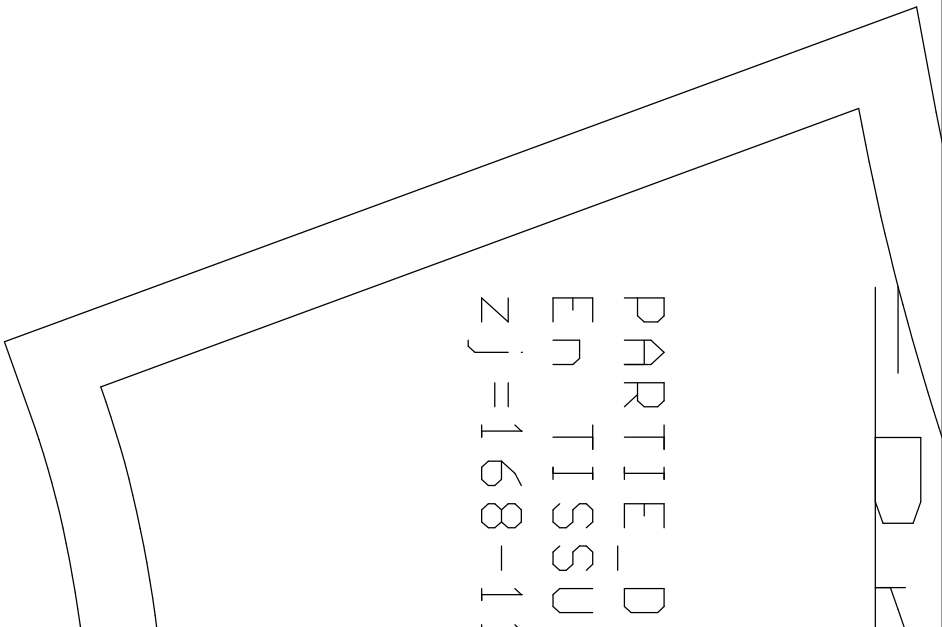










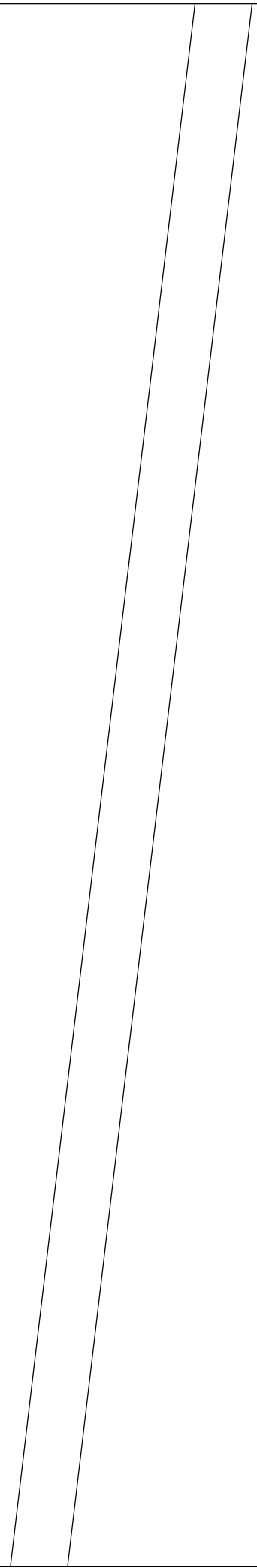
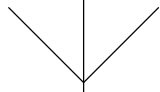


MANCHE

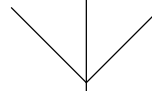
En TISSU, Surplus de couture

zj=168-110-82-116

$\text{dir } e = (1, 1)$



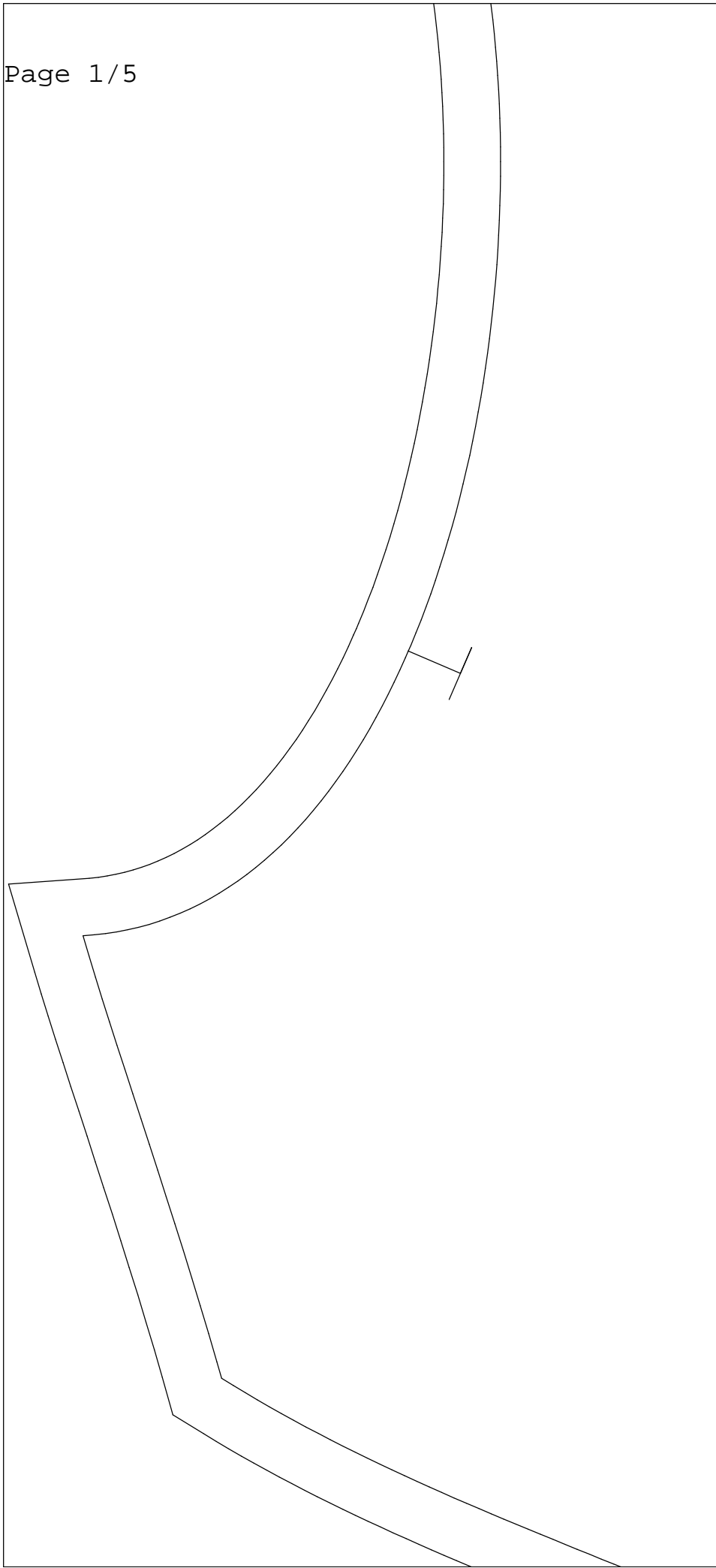
0 1 2 3 4 5

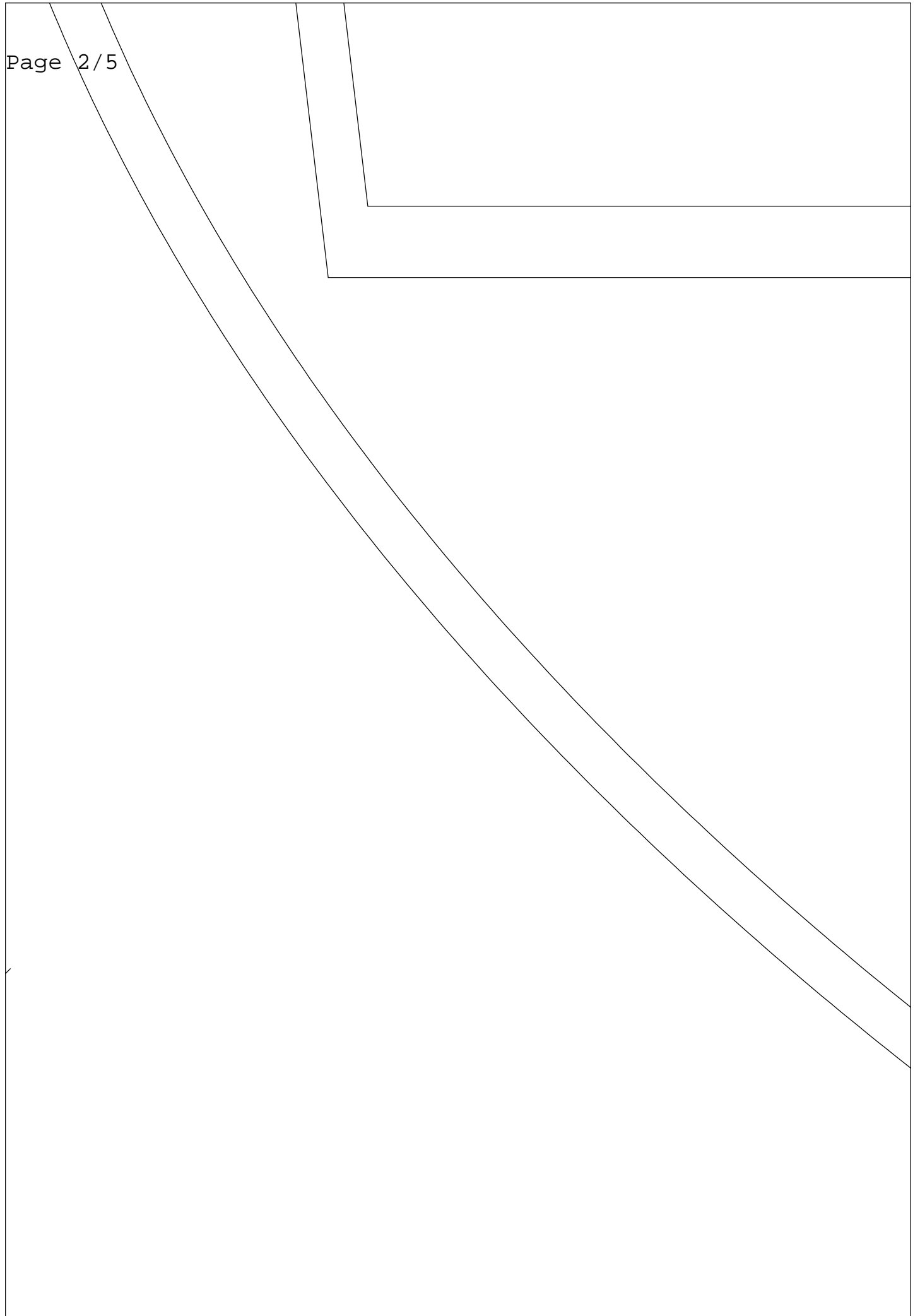


EVANT\_ SUPERIEUR

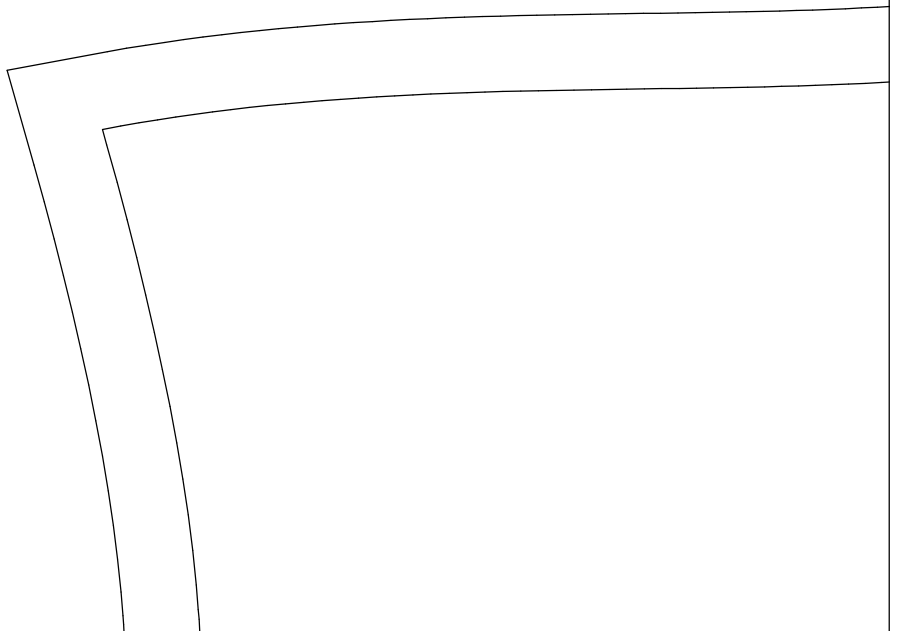
, Surplus de couture=(1,1)

10-82-116

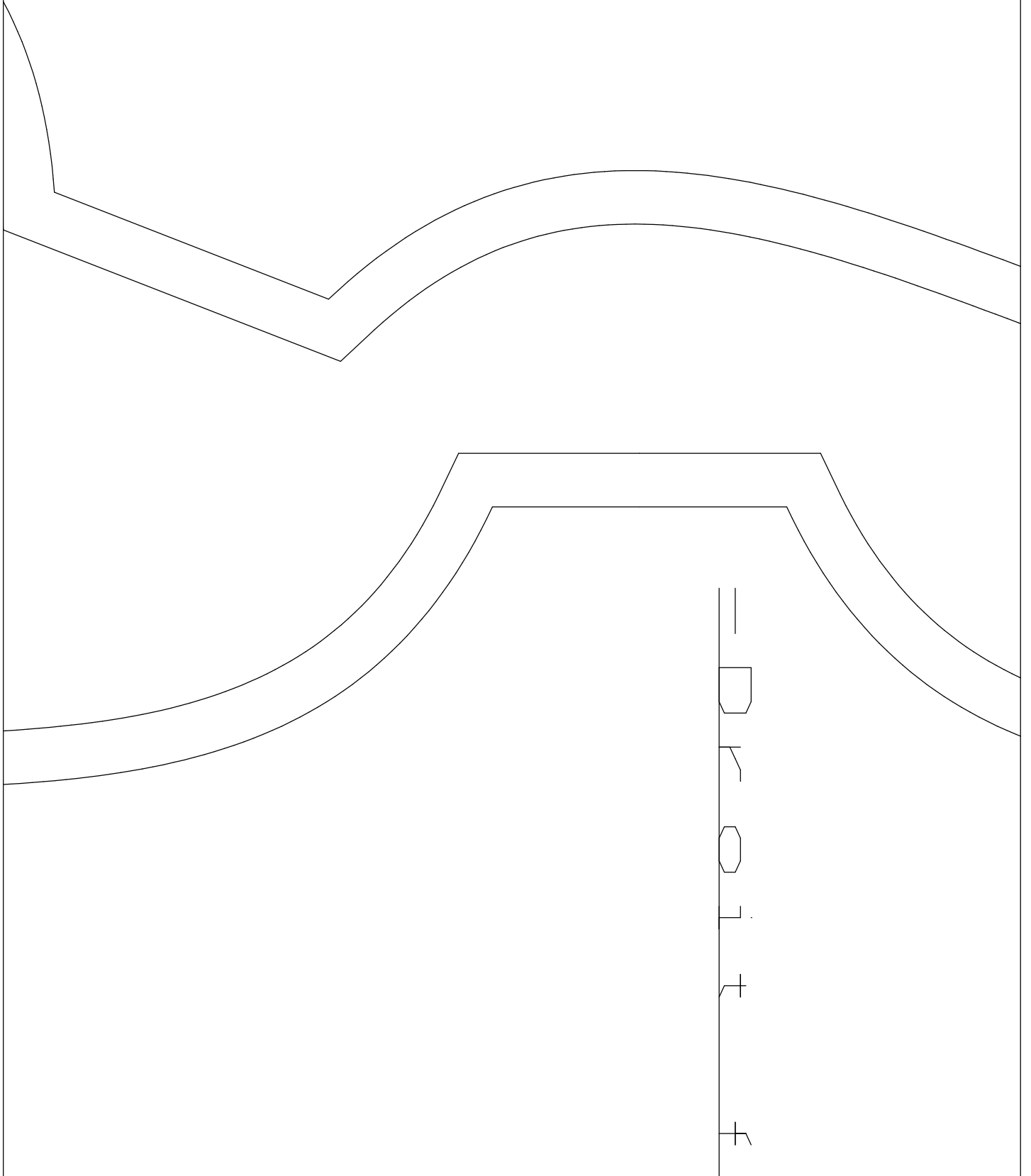


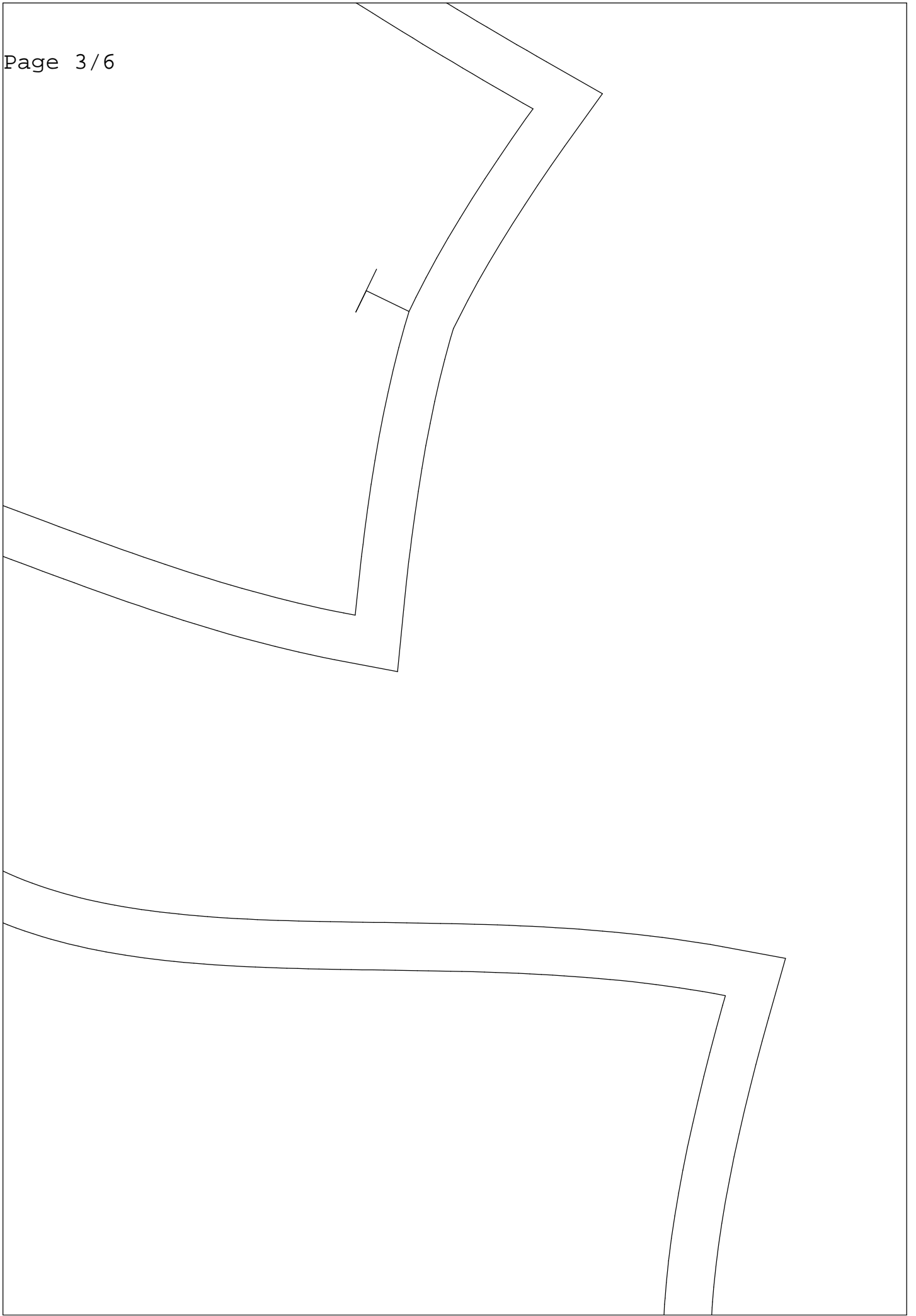








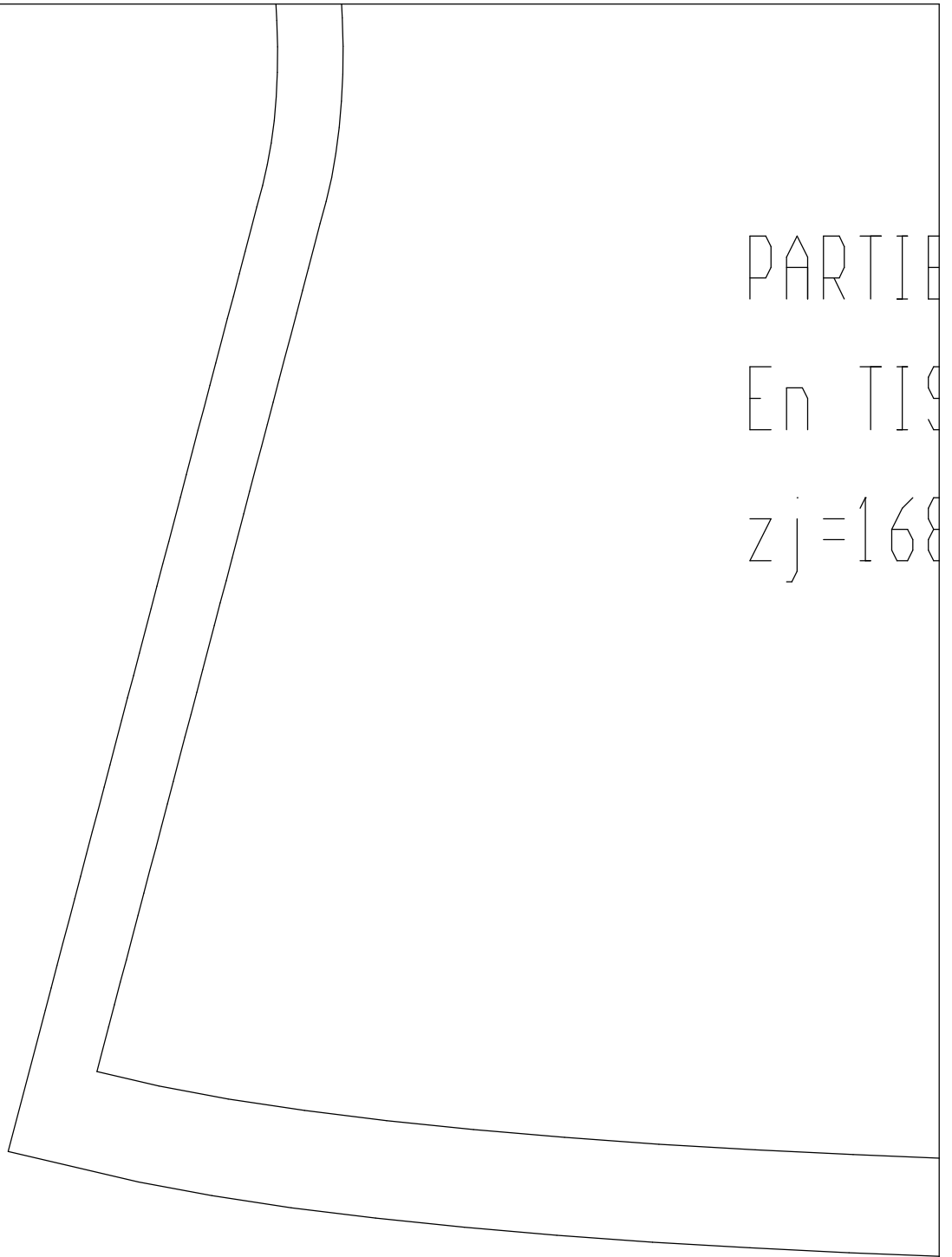




PARTIE

En TIS

zj=168



\_DEVANT\_INFÉRIEURE

SSU, Surplus de couture=(1,0)

B-110-82-116

