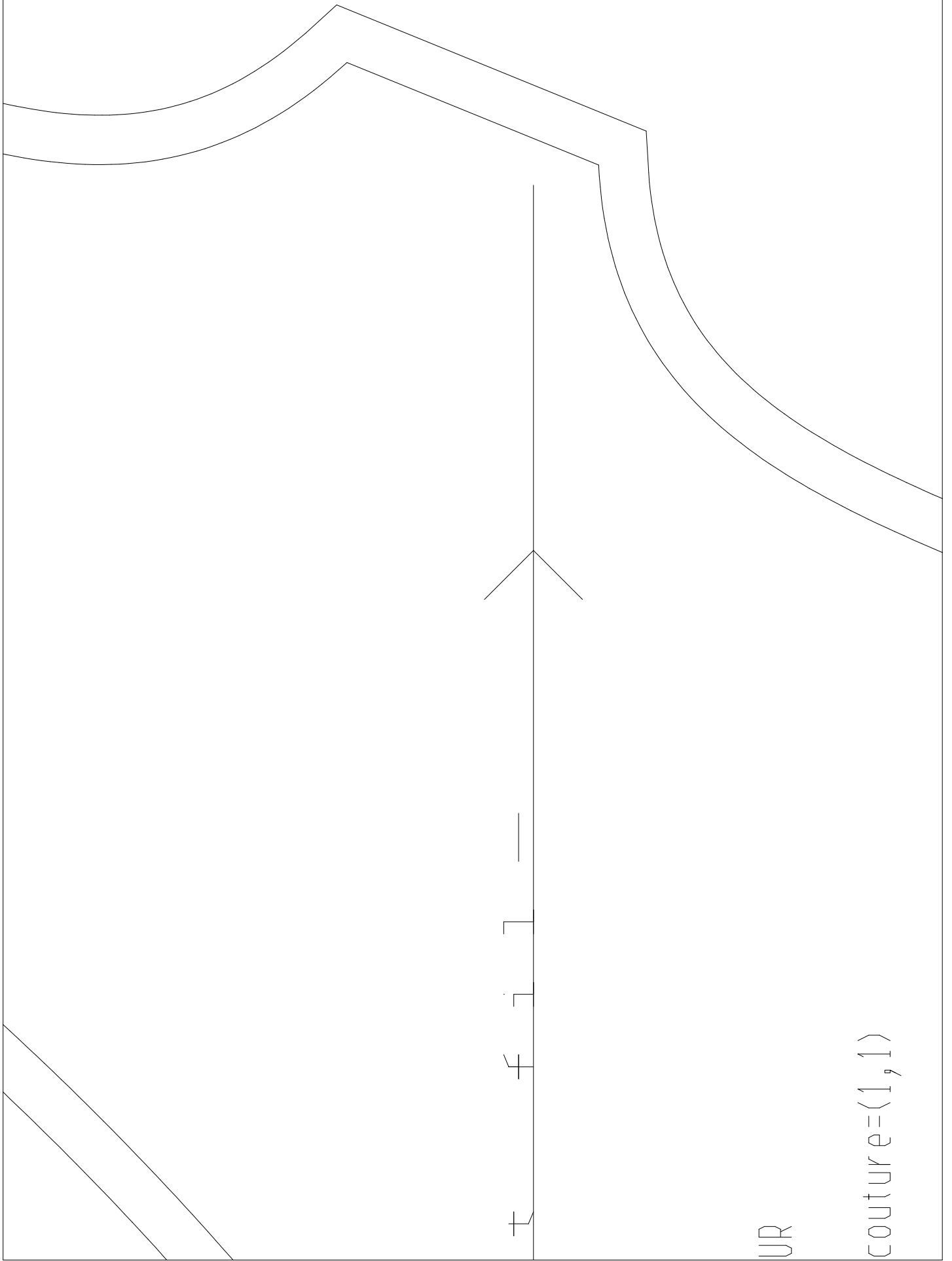


PARTIE_DEVANT_INF

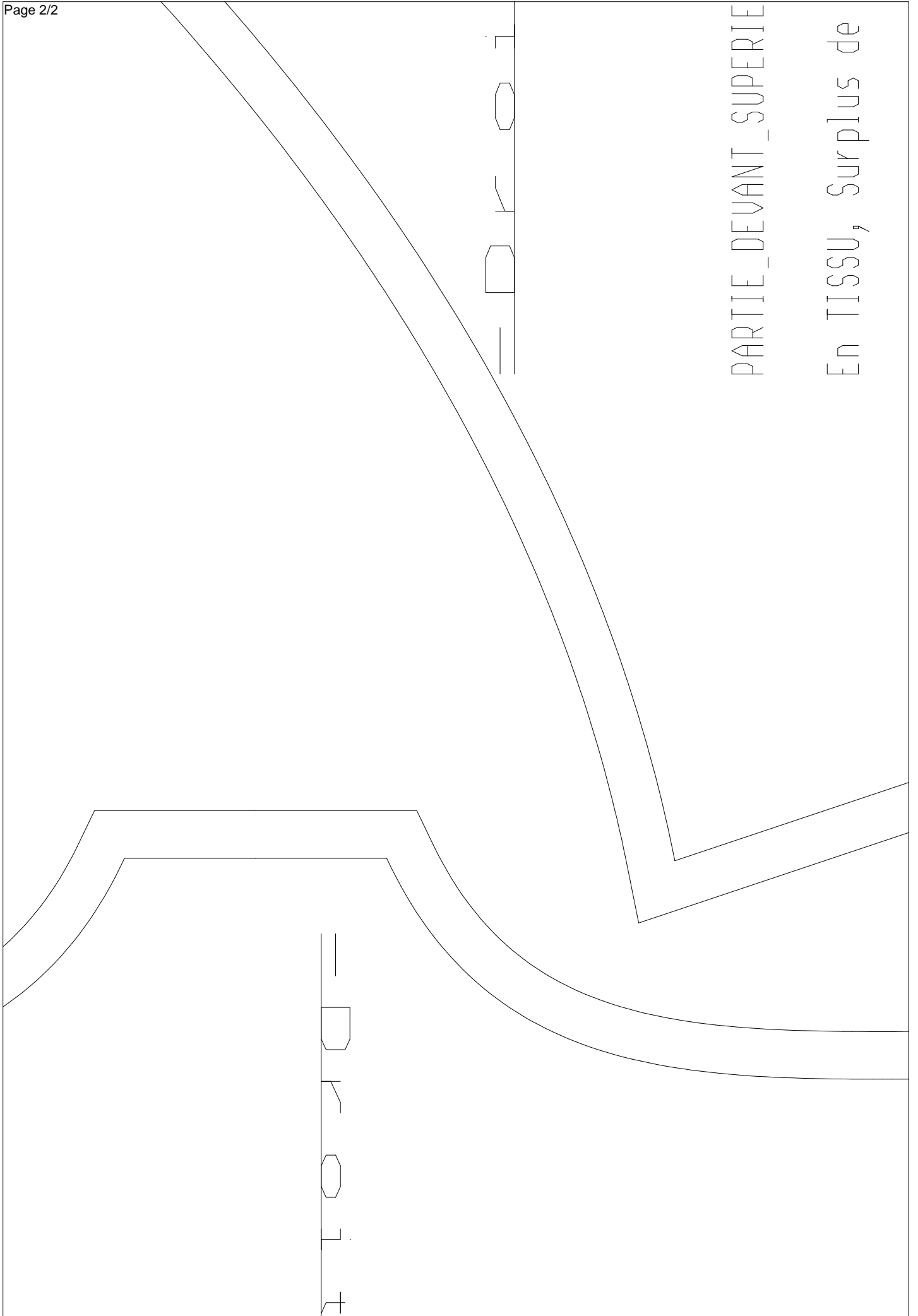
En TISSU, Surplus

zj=170-102-74-108



UR

couture=(1,1)

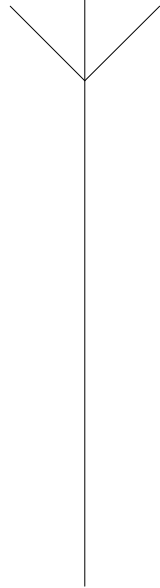


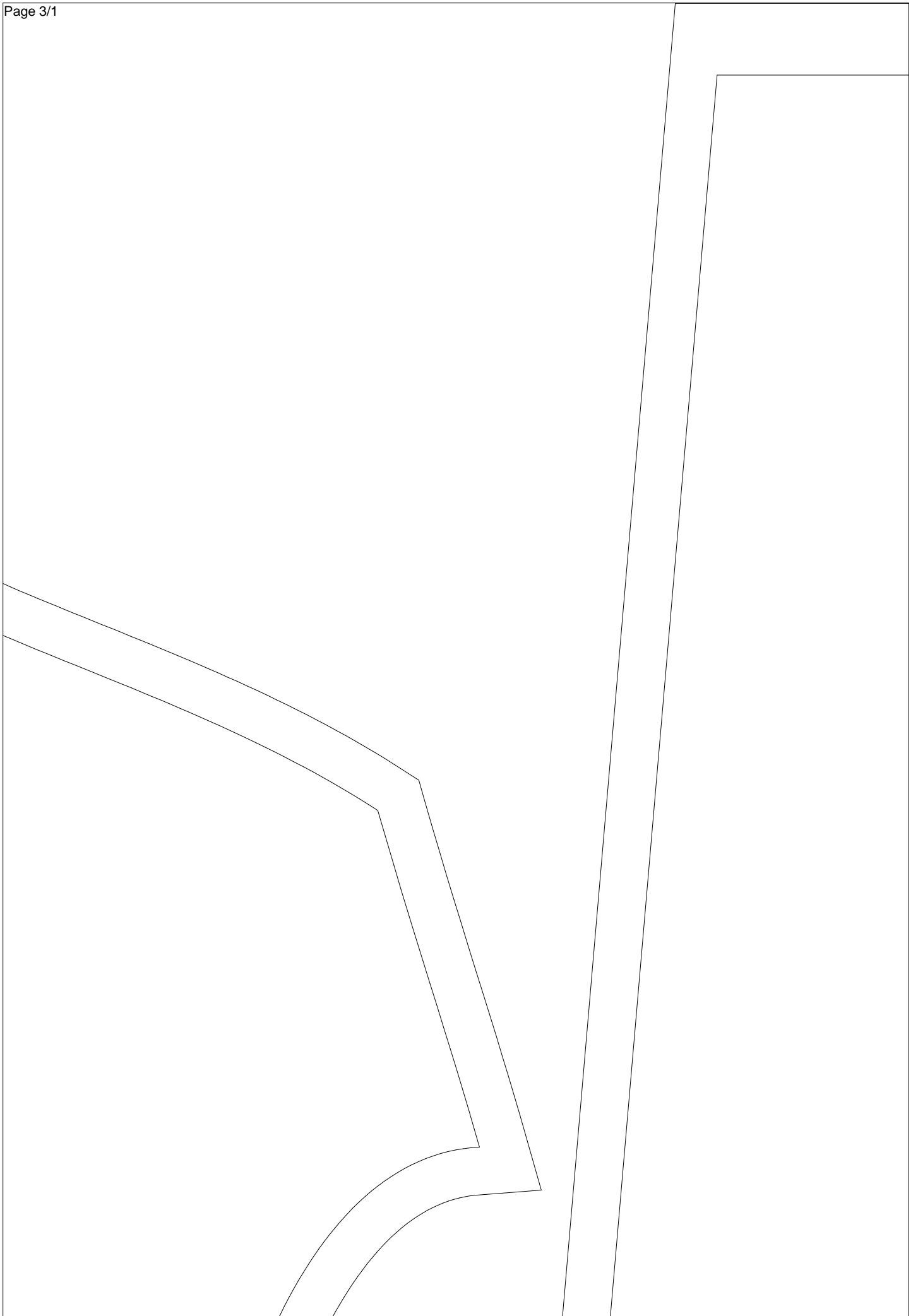
PARTIE_DEVANT_SUPERIE

En TISSU, Surplus de

ERIEURE

de couture $e = (1, 0)$

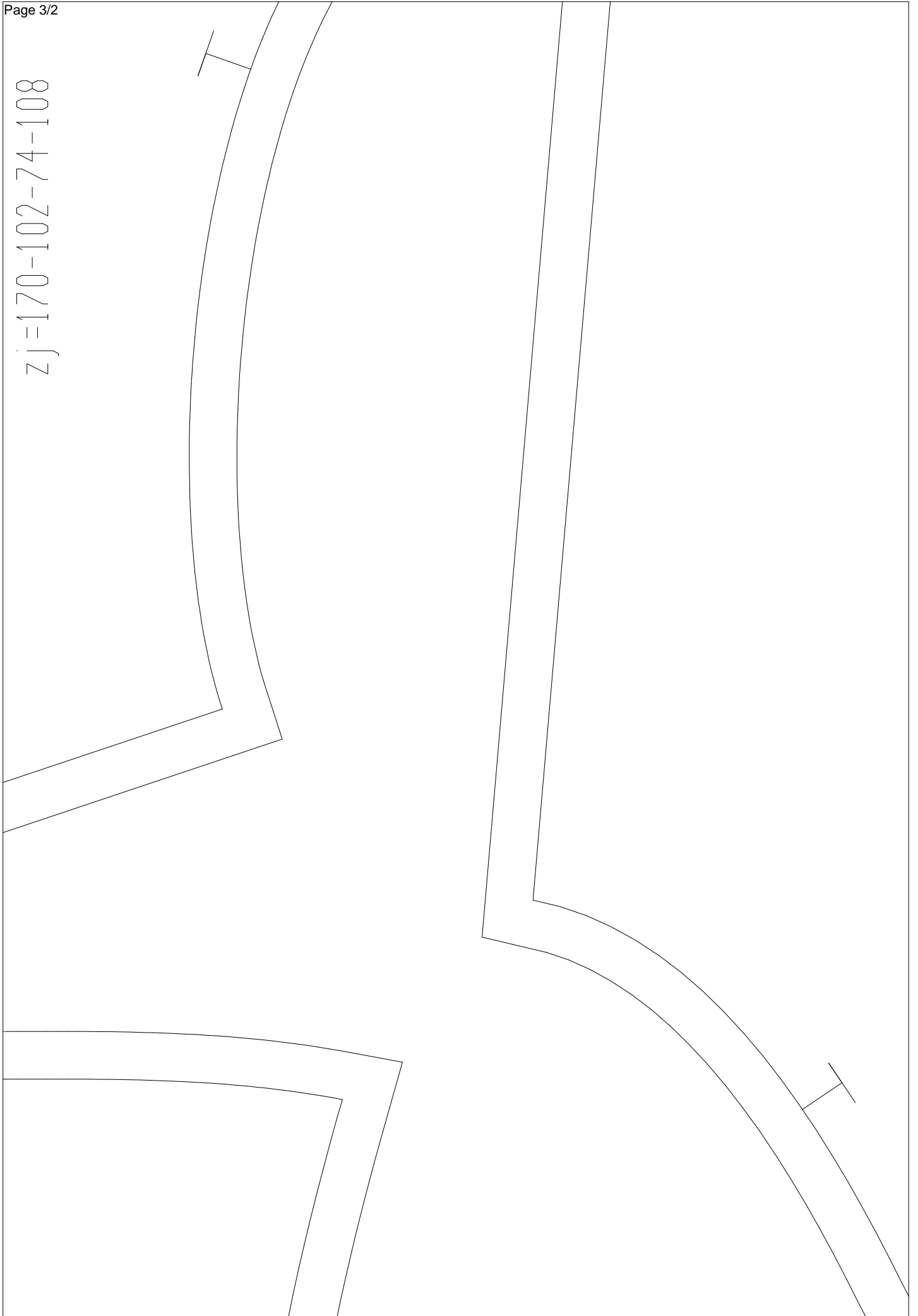


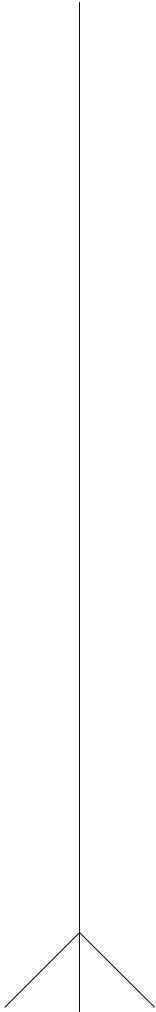


zj=170-102-74-108

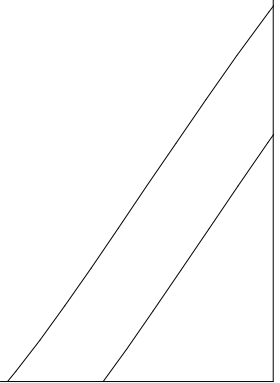
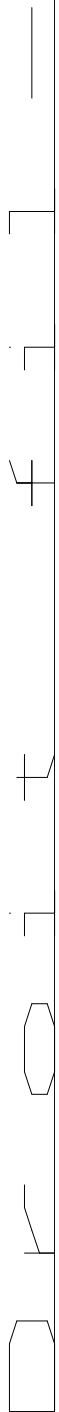
I

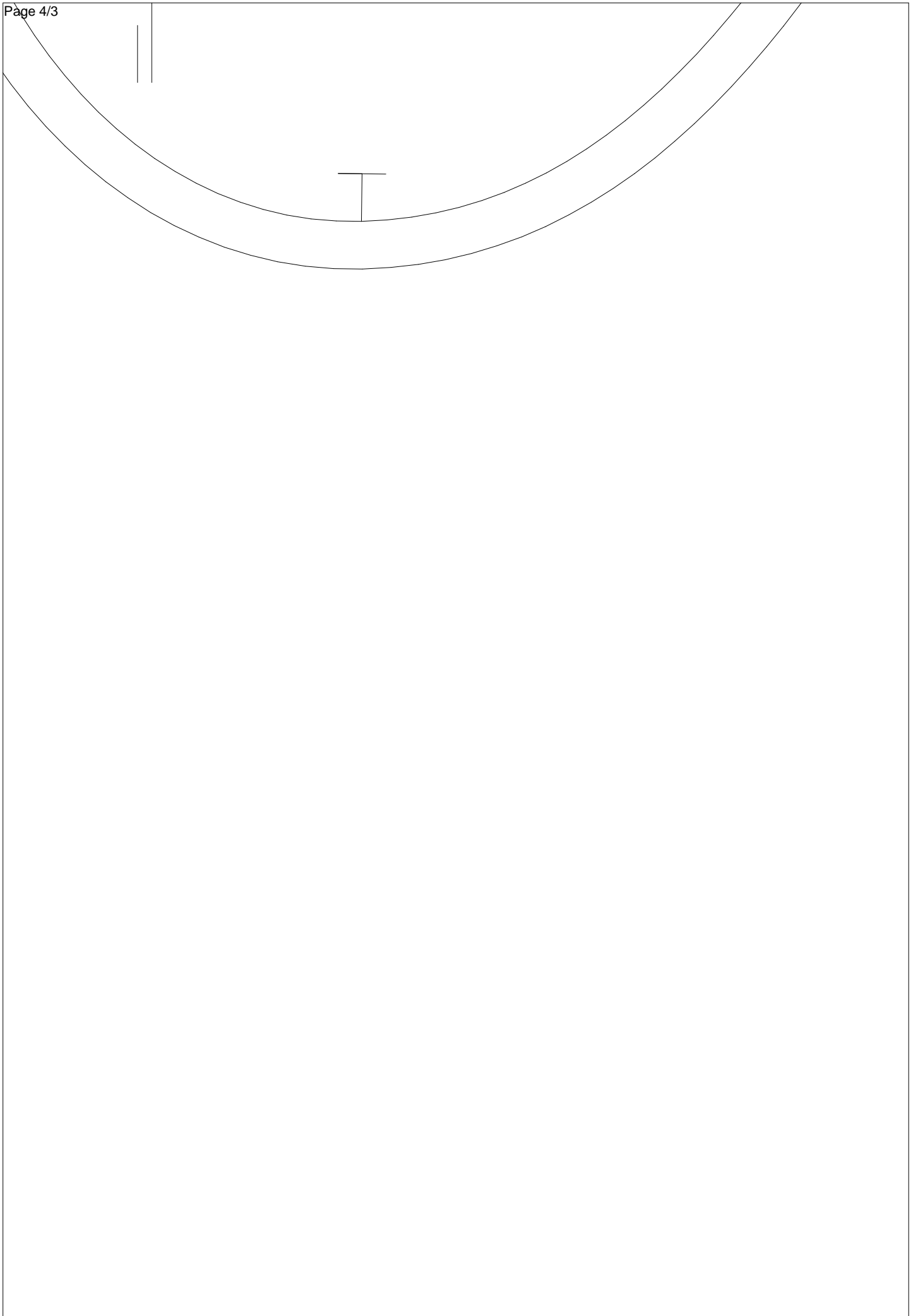
I





MANCHE
en TISSU, Surplus de couture=(1,1)
170-102-74-108



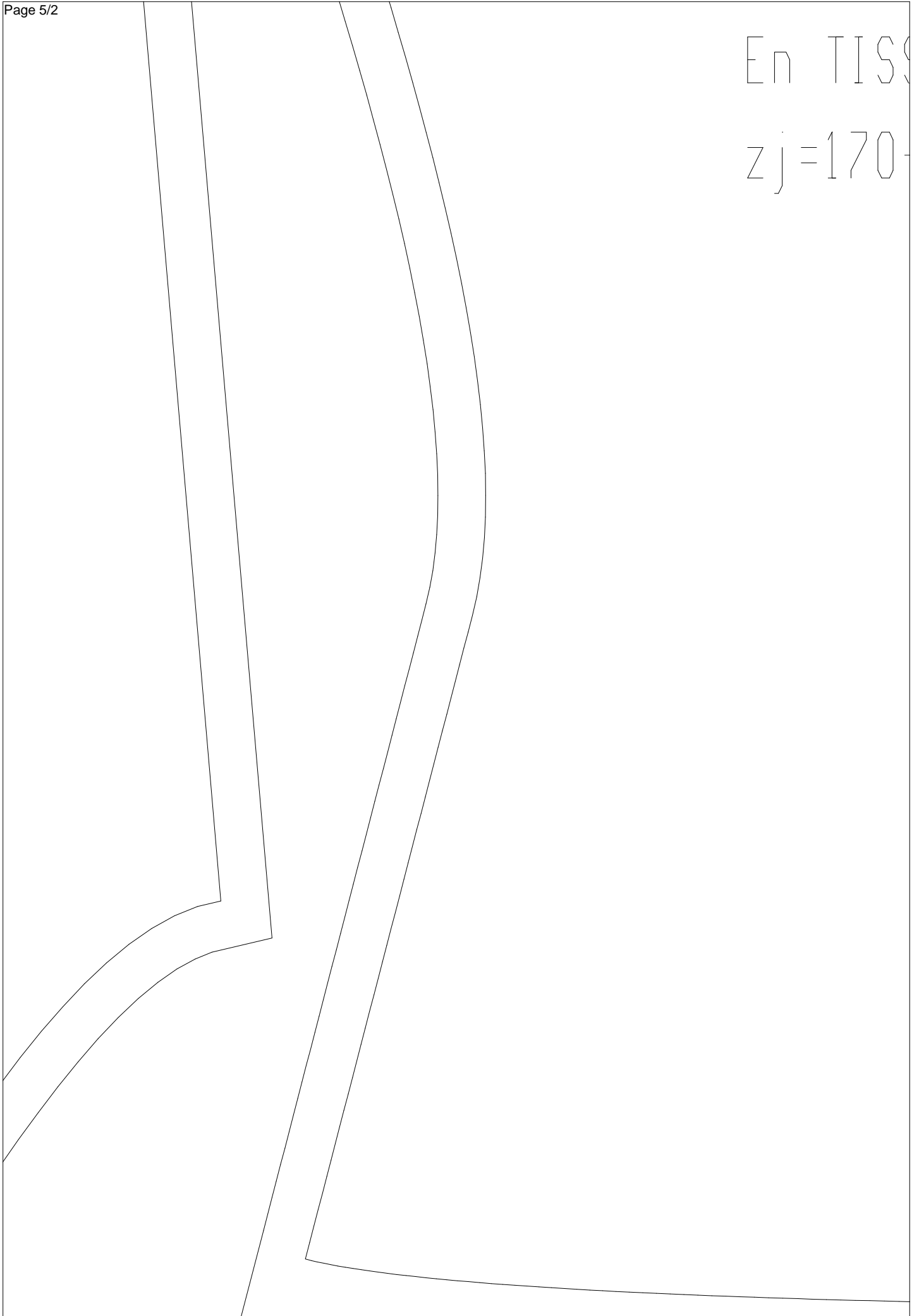


Z
E
N

PARTIE

En TISS

zj=170-



5U, Surplus de couture=(1,0)

-102-74-108

